

NEW COLLECTORS

ART



APPLIED ARTS

08.12.20

ART+OBJECT

Front cover:

John Ritchie
*Untitled – Abstracted
Landscape with Farmhouse*
Lot 155

John Ritchie
*Untitled – Abstracted
Landscape*
Lot 158

Back cover:

A selection of ceramics from
*Upside Crown: The Paul
Hartigan Collection of
Crown Lynn Ceramics*

Art+Object

3 Abbey Street
Newton
Auckland

PO Box 68345
Wellesley Street
Auckland 1141

Tel +64 9 354 4646
Free 0800 806 001
Fax +64 9 354 4645
info@artandobject.co.nz
www.artandobject.co.nz

instagram: @artandobject
facebook: Art+Object
youtube: ArtandObject

Photography: Sam Hartnett
Design: Fount+via
Print: Graeme Brazier

Welcome to Art+Object's December auction of New Collectors Art and Applied Art. We begin this auction with *Upside Crown: The Paul Hartigan Collection of Crown Lynn Ceramics*. Paul is a long-term friend and supporter of Art+Object and has been an important figure on the New Zealand art scene since the 1970's. Born in New Plymouth, he graduated from Elam School of Fine Arts, University of Auckland, with a Diploma of Fine Arts in 1974. His early explorations in painting gave way to ground-breaking work making digital paintings, frequently employing his trademark infinity symbol and always with a confident, bold use of colour and surrealist edge. However Paul's career has been defined by his ability to paint with light, or neon, encompassing small domestic pieces right through to large-scale installations such as the spectacular *Colony* (2004) commissioned by the University of Auckland for the Faculty of Engineering building on Symonds Street.

Throughout his career, Paul has held many interests and been an avid collector; from cars to ceramics and we are delighted to offer for sale his collection of Crown Lynn, lovingly compiled over 40 years. Included are many of the shapes we all grew up with and I am sure that viewing this collection will bring back memories, and further ignite a desire to collect. As Paul says, gathered here are many elegant pieces collected in passionate pursuit, now off to find new homes.

The art auction begins with items from the Estate of John and June Ritchie. Both dedicated arts professionals, they enjoyed a life-time as artists, while sharing their knowledge with many others through teaching.

John Ritchie was born in Christchurch and graduated from Canterbury School of Art in 1940. He served in the Armed Forces in World War II, recording his experiences in watercolour. Returning to Auckland, John worked as a lecturer and head of the Art Department at Auckland Teachers College. In 1965 he was awarded a QEII Arts Council Grant and together with wife June and their children, he travelled and studied in Japan, before retiring from teaching in 1977. June Ritchie had a particular interest in print-making and much of her work centres around her love for the Taupo region, where the family spent holidays together. It is our pleasure to highlight the work of this Auckland couple who made a significant contribution to the Auckland art landscape during their lifetimes.

Finally, our grateful thanks for your support this year from us all at Art+Object. 2020 has been so challenging for us all but we look forward to happier times in the new year. Warm wishes for a happy Christmas and relaxing holidays.

Season's Greetings

Leigh Melville

AUCTION HIGHLIGHTS

Our September auction was well attended, with unprecedented interest in the Damian Balle Collection of Crown Lynn and Wedgwood Studio Ceramics, which realised an auction total of over \$55 600

108 A fine and original pair of
Garth Chester 'Curvesse'
chairs, designed in 1944
Realised \$12 600

206 Colin McCahon
North Otago Landscape
Realised \$7450

236 Gordon Walters
Untitled (1978)
Realised \$18 600

243 Peter Robinson
Heart Trinity
Realised \$20 420

253 A. Lois White
Study for a Mural
Realised \$16 800

264 Amanda Gruenwald
Inlet
Realised \$9310

268 Max Gimblett
Remembrance
Realised \$15 910



A selection of Ernest Shufflebotham for Crown Lynn vases from the Damian Balle Collection of Crown Lynn and Wedgwood Studio Ceramics



24.09.20

NEW COLLECTORS ART



264



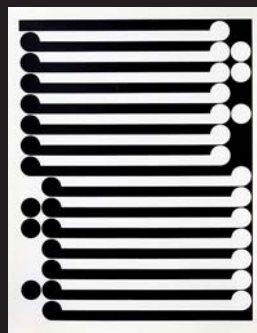
268



253



206



236



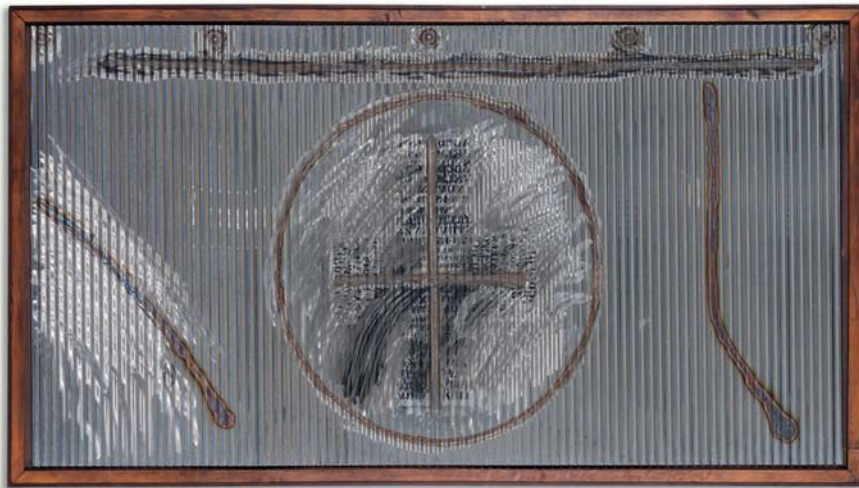
243

AUCTION HIGHLIGHTS

Preliminary Highlights

Sale Total: \$2 045 000
achieved under the hammer

IMPORTANT PAINTINGS & CONTEMPORARY ART



24.11.20

67

Ralph Hotere
Untitled

blowtorched and burnished baby iron with
applied acrylic (1984)
1220 x 2260mm
Estimate \$180 000 – \$280 000
Realised \$180 180

29

Michael Parekowhai
The Moment of Cubism

hand-finished cast bronze, unique
(2009)
1170 x 560 x 365mm
Estimate \$45 000 – \$65 000
Realised \$68 465

69

Theo Schoon
Untitled Mural

oil on board, four panels (1982)
1600 x 4780 x 30mm: overall
Estimate \$160 000 – \$250 000
Realised \$336 335
A new record price for the artist
at auction.



**NEW
COLLECTORS
ART**

23.02.2021

INCLUDING: THE KUNST ART COLLECTING GROUP



FURTHER ENTRIES INVITED

Johanna Pegler
Nebula
from *City of Rivers/River of Trees*, 2011
oil on board
600 x 700mm

NEW COLLECTORS ART

APPLIED ARTS

AUCTION

Tuesday 8 December
at 5.30pm
3 Abbey Street, Newton
Auckland

VIEWING

Friday 4 December	9.00am – 5.00pm
Saturday 5	11.00am – 4.00pm
Sunday 6	11.00am – 4.00pm
Monday 7	9.00am – 5.00pm
Tuesday 8	9.00am – 1.00pm



34

APPLIED ARTS

UPSIDE CROWN THE PAUL HARTIGAN COLLECTION OF CROWN LYNN CERAMICS

Paul Hartigan has been a key figure in New Zealand art for over four decades. His pop art images are among the most iconic and enduring images in New Zealand visual culture, and his large-scale commissioned neon works such as *Colony* (2004) on Symonds Street in Auckland, and *Pathfinder* (1997) on the exterior of the Govett-Brewster Gallery in New Plymouth, are among the country's most loved public artworks. Hartigan is also a passionate and eclectic collector of cultural artefacts.

Art+Object is delighted to present 'Upside Crown: The Paul Hartigan Collection of Crown Lynn Ceramics'. Comprising of over 100 pieces and focused predominantly on the iconic white, slip-cast designs of the company's popular post-war consumer culture years, Hartigan's collection has been lovingly compiled over forty years. It includes many of the shapes and designs New Zealanders have grown to love and cherish and which have become iconic signifiers of New Zealand popular culture.

- 1 Crown Lynn Potteries
Duo of fan-shaped white vases
slip-cast ceramic, decorated with roots motif
on the base, c.1955
factory mark and incised shape number 643
& 644 to the bases
largest H. 175mm
\$100 – \$200

- 2 Crown Lynn Potteries
Selection of four small white ribbed troughs
slip-cast ceramic, c.1948–1955
factory mark and incised shape number 136,
137 & 141 to the bases
longest L. 280mm
\$130 – \$250

- 3 Crown Lynn Potteries
Duo of small cream and gilt ceramic vases
cream glaze and gilt scroll handles,
c.1948–1955
factory mark and incised shape number 130
& illegible to the bases
H. 100mm (each)
\$100 – \$200

- 4 Crown Lynn Potteries
A pair of urn-shaped vases
brilliant white glazed slip-cast ceramic, with
applied shell-shaped handles
printed factory mark and incised shape
number 666 to the bases
H. 240mm
\$200 – \$300

- 5 Crown Lynn Potteries
Pair of urn-shaped vases
cream glazed slip-cast ceramic
printed factory mark and incised shape
number 583 to the bases
H. 235mm
\$200 – \$300

- 6 Crown Lynn Potteries
Duo of sinuous troughs and a float boat
white slip-cast ceramic, with ridged and
foiled designs, c.1950–1960's
factory mark and incised shape number 139,
138 and illegible to the bases
L. 215mm (approx.)
\$100 – \$200

- 7 Crown Lynn Potteries
Double pairing of small white vases
slip-cast ceramic, one pair cup-shaped
decorated with scrolls, the other one with
ovoid shape and foliate motifs, c.1948–1955
factory mark and incised shape number 524
& 525 to the bases
H. 110mm (each)
\$100 – \$200

- 8 Crown Lynn Potteries
Five small vases and a candle holder
slip-cast ceramic with various pastel glazes
most with impressed shape number to the
bases
tallest H. 100mm
\$100 – \$200



9 Crown Lynn Potteries
Five small vases
slip-cast ceramic with brown and yellow
glazes, together with a green vase and a
yellow cup
one vase with impressed shape number 132
to the base
tallest H. 100mm
\$100 – \$200

10 Crown Lynn Potteries
Five small vases
slip-cast ceramic with brown, yellow and
green glazes
most with impressed shape number to the
bases
tallest H. 100mm
\$100 – \$200

11 Crown Lynn Potteries
Rare 'fish' ashtray
white slip-cast ceramic, decorated to the
centre with a fish and bubbles in relief,
c.1950's
printed factory mark and impressed shape
number 472 to the base
D. 120mm
\$100 – \$200

12 Crown Lynn Potteries
Matching trio of white float bowls
slip-cast ceramic with cream white glaze
with bulbous petal-like rim, c.1955
factory mark and incised shape number 505
to the bases
D. 185mm (each)
\$100 – \$200

13 Crown Lynn Potteries
Two shell-shaped white vases
slip-cast ceramic, comprising of one Nautilus
vase raised on a base decorated with seabed
motifs and one large shell vase, c.1960
factory mark to the base of the shell vase,
both with impressed shape number 550 &
illegible
H. 160mm
\$200 – \$300

14 Crown Lynn Potteries
Pair of Nautilus vases
double-shell slip-cast ceramic vases raised
on a base decorated with seabed motifs,
c.1955
printed factory mark and incised shape
number 550 to the bases
H. 165mm
\$150 – \$300



15 Crown Lynn Potteries
Rare pale blue Nautilus vase
double-shell slip-cast ceramic with a pale
sapphire blue lustre glaze, the vase raised on
a base decorated with seabed motifs
impressed shape number 2067 to the base
W. 285mm
\$200 – \$400

16 Crown Lynn Potteries
Collection of four trough vases
white slip-cast ceramic, comprising of a
taller vase with flaring sides, c.1948–55; two
long ones with pinched sides, c.1950–55,
and a shell-shaped one, c.1960's
all with printed factory mark and impressed
shape number 44, 103, 509 and 597 to the
bases
largest W. 310mm
\$150 – \$300

17 New Zealand Pottery
Group of three white slip-cast ceramics
comprising of two Crown Lynn specimen
vases, shapes no. 653 and no. 480; and
one unmarked possibly Titian cabbage leaf-
shaped vase, shape no. 112, c.1950–1960
factory mark to the bases of the Crown Lynn
pieces, all with impressed shape numbers
largest H. 170mm
\$150 – \$300

18 Crown Lynn Potteries
Unusual cuckoo clock-shaped vase
slip-cast ceramic with matt mint green glaze,
c.1950–55
printed factory mark and impressed shape
number 558 to the base
H. 155mm
\$150 – \$300





- 19 Crown Lynn Potteries
Matching duo of watering can-shaped vases
cream white and mint green slip-cast
ceramic, beaded decoration near rim and
base, three holes in each spout, c.1948–
1955
factory mark and impressed shape number
215 to the bases
H. 100mm (each)
\$100 – \$200
- 20 Crown Lynn Potteries
Matching duo of wheelbarrow-shaped vases
cream white and mint green slip-cast
ceramic, c.1950–1955
factory mark and impressed shape number
214 to the bases
H. 85mm (each)
\$150 – \$300
- 21 Crown Lynn Potteries
Matching duo of spinning wheel-shaped
vases
cream white and mint green slip-cast
ceramic, c.1950–1955
factory mark and incised shape number 517
to the bases
H. 145mm (each)
\$150 – \$300
- 22 Crown Lynn Potteries
Two 'Kelston Potteries' vessels
slip-cast ceramic, comprising one fan-
shaped vase and a trough, c.1960s
both with printed 'Kelston Potteries New
Zealand' mark to the base, the trough also
with impressed shape number 595
largest W. 295mm
\$150 – \$300
- 23 Crown Lynn Potteries
Selection of twisted bark-shaped vases
slip-cast ceramic, comprising of one pair of
vases and two larger pieces decorated with
wood knots and twisted bark, c.1955
factory mark and impressed shape number
590, 584 and 585 to the bases
largest H. 215mm
\$200 – \$400



- 24 Crown Lynn Potteries
Duo of small long-neck vases
slip-cast ceramic with black and white
glazes, decorated with vertical ridges, shape
no. 352, c.1960
stamped 'Flair Art Pottery New Zealand' to
the base of the white vase
H. 180mm (each)
\$100 – \$200

- 25 Crown Lynn Potteries
Two black ceramic vases
one of baluster shape (no. 368), the other
with trumpet neck over a ribbed body (no.
80)
both with impressed shape number to the
bases, no. 80 also with printed factory mark
tallest H. 205mm
\$150 – \$300
- 26 Crown Lynn Potteries
Three urn-shaped white vases
slip-cast ceramic
all with printed factory mark and impressed
shape number 665, 678 & 679 to the bases
largest H. 200mm, graduating sizes
\$200 – \$300



- 27 Crown Lynn Potteries
Urn-shaped lamp
slip-cast ceramic, white glaze, with applied
shell-shaped handles, c.1960
factory mark to the bases
H. 300mm (excluding shade)
\$200 – \$400
- 28 Titian Studio
White model waka trough vase
ceramic, c.1960s
impressed Titian Studio mark and shape
number 104 to the base
L. 280mm
\$150 – \$300
- 29 Titian Studio
Two white trough vases
slip-cast ceramic, one moulded with a
cobweb and a spider, the other with stylised
leaves
impressed factory mark and shape number
to the bases (not clearly legible)
W. 200mm
\$100 – \$200
- 30 Hemera Hemera for Titian Studio (attrib.)
Gurgle jug
slip-cast ceramic with glossy black glaze
with grey and white detailing
impressed H.H. initials to the base
H. 220mm
\$100 – \$200



- 31 Crown Lynn Potteries
Large white swan
slip-cast ceramic
printed factory mark to the base
H. 310mm
\$200 – \$300
- 32 Crown Lynn Potteries
Large white 'male' swan
slip-cast ceramic
impressed shape number 170 to the base
H. 240mm
\$200 – \$300
- 33 Crown Lynn Potteries
Large painted swan
slip-cast ceramic, white matte glaze with
painted beak and eyes, c.1960
factory marks and incised shape number 170
to the base
W. 310mm
\$400 – \$800
- 34 Crown Lynn Potteries
Rare large pale blue swan
slip-cast ceramic with very pale blue lustre
glaze, c.1955–65
impressed shape number 2066 to the base
W. 300mm
\$500 – \$1000
- 35 Crown Lynn Potteries
Large white swan
slip-cast ceramic
printed factory mark and impressed shape
number 170 to the base
H. 310mm
\$200 – \$300
- 36 Crown Lynn Potteries
Small swan
brilliant white slip-cast ceramic with crisp
detailing, c.1960s
printed factory mark and impressed shape
number 154 to the base
W. 150mm
\$100 – \$200
- 37 Crown Lynn Potteries
Two small white swans
slip-cast ceramic, c.1950s
printed factory mark and impressed shape
number 154 to the bases
W. 150mm (each)
\$150 – \$300
- 38 Crown Lynn Potteries
Two large oval trough vases
white slip-cast ceramic, c.1950s
printed factory mark and impressed shape
number 74 and 108 to the bases
largest W. 305mm
\$100 – \$200



- 39 Crown Lynn Potteries
A pair of large sinuous trough vases
white slip-cast ceramic, c.1955–1960s
printed factory mark and impressed shape
number 106 to the bases
W. 285mm
\$100 – \$200

- 40 Crown Lynn Potteries
Large white trough vase
slip-cast ceramic with relief stylised leaf
design
printed factory mark and impressed shape
number 609
L. 270mm
\$150 – \$200

- 41 Crown Lynn Potteries
Pair of flower shaped trough vases
slip-cast ceramic with matt mint green glaze,
c.1950–55
impressed mark and shape number 510 to
the bases
W. 270mm
\$200 – \$300

- 42 Temuka Pottery
Scallop vase
light mint green glazed ceramic, c.1941–
1960
factory mark to the base
H. 185mm
\$100 – \$200

- 43 Temuka Potteries
Child's chamber pot
high fired ceramic with yellow glaze,
c.1931–41
printed factory mark to the base
D. 200mm
\$100 – \$200

- 44 Amalgamated Brick and Pipe Co. (early
Crown Lynn)
Large cylindrical vase
stoneware with brown glaze
unmarked
H. 340mm
\$200 – \$400

- 45 Crown Lynn Potteries
Pōhutukawa vase attributed to Daniel
Steenstra
slip-cast ceramic with brown glaze and
painted decoration
printed factory mark, impressed shape
number 525 and painted letter 'A' to the
base
H. 225mm
\$500 – \$800

- 46 Crown Lynn Potteries
Two mantle vases
slip-cast ceramic with scrolls detailing,
c.1960
factory mark and impressed shape number
671 & illegible to the bases
largest H. 175mm
\$200 – \$400





- 47 Spode Pottery
Large 'Frou Frou' vase
slip-cast ceramic moulded with raised
'bubbles' to the body
inscribed in pencil 'Paul Hartigan, 2008' to
the base
W. 385mm
\$200 – \$400

- 48 Crown Lynn Potteries
Selection of three large white trough vases
slip-cast ceramic, c.1948–1955 and c.1960s
all with printed factory mark and impressed
shape number 447, 668 and 669 to the
bases
largest W. 335mm
\$200 – \$400
- 49 Crown Lynn Potteries
Duo of white cabbage-themed vase
slip-cast ceramic, comprising of one full
cabbage-shaped vase with ribbed leaves and
one mantle vase decorated with cabbage
leaves on its centre, ribbed detailing and
scrolls on the extremities, c.1950–1960
impressed factory mark and illegible shape
numbers to the bases
largest H. 160mm
\$200 – \$400
- 50 Crown Lynn Potteries
Rare pale pink basket
slip-cast ceramic with matt pale pink glaze,
c.1950–55
printed factory mark and impressed shape
number 507 to the base
W. 320mm
\$200 – \$400
- 51 Crown Lynn Potteries
Basket
cream white slip-cast ceramic shaped in a
woven basket, c.1950–1955
stamped factory mark and impressed shape
number 476 to the base
H. 100mm
\$100 – \$200

- 52 Crown Lynn Potteries
Pair of white clogs
slip-cast ceramic, c.1948–1955+
factory mark and incised shape number 515
to the bases
H. 80mm (each)
\$100 – \$200
- 53 Crown Lynn Potteries
Two rare pale blue eggcups
slip-cast ceramic, one modelled as a bird,
the other as a bulldog
tallest H. 70mm
\$200 – \$400
- 54 Crown Lynn Potteries
Two rare standing duck eggcups
slip-cast ceramic in green and blue glazes
H. 70mm
\$200 – \$400
- 55 Crown Lynn Potteries
Two rare green eggcups
slip-cast ceramic, one modelled as a
swimming duck, the other as a frog
tallest H. 70mm
\$130 – \$250
- 56 Crown Lynn Potteries
Rare yellow seal eggcup
together with another yellow eggcup
with 'Mary Had A Little Lamb' decoration,
probably English
tallest H. 70mm
\$100 – \$200



- 57 Crown Lynn Potteries
Rare large trumpet neck vase
white slip-cast ceramic, the body with
two tall bands in relief, c.1948–55
printed factory mark and impressed
shape number 86 to the base
H. 305mm
\$300 – \$500



- 58 Crown Lynn Potteries
Two white vases
slip-cast ceramic, comprising a baluster vase decorated with foiled motifs, and a bottle vase with petal patterns drilled near the base for electrical fittings, c.1948–1955
printed factory mark and impressed shape number 84 & 81 to the bases
tallest H. 230mm
\$150 – \$200
- 59 Crown Lynn Potteries
Pair of white boat-shaped vases
slip-cast ceramic with intricate detailing, c.1960
impressed factory mark and shape number 554 to the bases
H. 115mm (each)
\$200 – \$300
- 60 Crown Lynn Potteries
Pair of two shell-shaped trough vases
white slip-cast ceramic, c.1950–55
factory mark and impressed shape number 105 to the base
W. 270mm
\$100 – \$200
- 61 Crown Lynn Potteries
Two large trough vases
white slip-cast ceramic, C. late 1950's/1960's
factory mark and impressed shape number 587 & illegible to the bases
largest W. 280mm
\$70 – \$150
- 62 Crown Lynn Potteries
Pair of white crag-shaped vases
slip-cast ceramic, c.1960
factory mark and impressed shape number 586 to the bases
H. 130mm
\$100 – \$200
- 63 Crown Lynn Potteries
Sitting fawn model
slip-cast ceramic with glossy black glaze
impressed shape number 202 to the base
W. 117mm
\$100 – \$200
- 64 Crown Lynn Potteries
Westmoreland Scottish Terrier (Scottie) dog model
slip-cast ceramic with glossy black glaze
L. 150mm
\$150 – \$300
- 65 Crown Lynn Potteries
Rare small Bulldog and Scottie dog vase
white slip-cast ceramic, c.1948–55
printed factory mark and incised shape number 177 (partially illegible) to the base
W. 105mm
\$100 – \$200
- 66 Crown Lynn Potteries
Kingfisher bird 'flower frog'
white slip-cast ceramic, c.1948–55
printed mark to the base
H. 145mm
\$100 – \$200
- 67 Crown Lynn Potteries
Purple-glazed elephant
slip-cast ceramic, glossy purple glaze, c.1948–1955
factory mark to the bases
H. 160mm
\$400 – \$600



- 68 Crown Lynn Potteries
Trickle-glazed kiwi vase
early slip-cast ceramic, shaped as a kiwi with a glossy glaze in gradation of browns
incised numbers 5/6 & 40 to the base
H. 115mm
\$150 – \$300
- 69 Crown Lynn Potteries
Kiwi vase
slip-cast ceramic, brightly hued kiwi and ferns vase with green and brown, glossy glaze
incised shape number 165 to the base
H. 120mm
\$100 – \$200
- 70 Crown Lynn Potteries
White kiwi vase
slip-cast ceramic, c.1950–55
printed factory mark and impressed shape number 165 to the base
W. 140mm
\$100 – \$200
- 71 Crown Lynn Potteries
Fruit comport stand
white slip-cast ceramic, C. 1955–1960's
printed factory mark and impressed shape number 2020 to the base
H. 140mm
\$100 – \$200



- 72 Crown Lynn Potteries
Classical style jug
cream white glazed slip-cast ceramic
decorated with honeycomb and laurel leaf
motifs, c.1960
factory mark and impressed shape number
610 to the base
H. 260mm
\$200 – \$300

- 73 Crown Lynn Potteries
Urn vase
slip-cast ceramic in cream
impressed factory mark and (illegible) shape
number to the base
H. 170mm
\$100 – \$200

- 74 O.C. Stephens
Urn-shaped vase
green glazed ceramic
printed mark to the base
H. 170mm
\$200 – \$400

- 75 O.C. Stephens
Two small vases
glazed ceramic, one in green,
the other in red
printed mark to the bases
tallest H. 90mm
\$100 – \$200

- 76 Crown Lynn Potteries
Set of three rectangular trough vases
slip-cast ceramic in warm white,
decorated with a low relief wave pattern,
c.1955–1960's
factory mark and impressed shape number
508–7 to the bases
W. 175mm
\$100 – \$200

- 77 Crown Lynn Potteries
Three oval ribbed trough vases
white slip-cast ceramic, c.1948–55
printed factory marks and impressed shape
number 75 and 77 to the bases
largest W. 260mm
\$130 – \$250

- 78 Crown Lynn Potteries
Pair of small white curvy vases
white slip-cast ceramic
incised shape number 129 to the base
H. 95mm
\$80 – \$150

- 79 Crown Lynn Potteries
Selection of three white slip-cast ceramic
pieces
comprising of one tray, one heart-shaped
trough and one frilled candlestick,
c.1948–1960
factory mark and impressed shape number
651 & 436 to the bases
candlestick H. 170mm
\$100 – \$200

- 80 Crown Lynn Potteries
A collection of five assorted small white
vases and a mug
slip-cast ceramic
various factory marks (including one 'Flair
Art Pottery') and incised shape numbers to
the base
tallest H. 130mm
\$100 – \$200

- 81 Crown Lynn Potteries (attrib.) and Sylvac
Two small white vases, possibly Titian Studio,
and a Sylvac vase
ceramic
the two smaller vases' bases impressed
with V–111 and V–112; the Sylvac vase with
printed factory mark and impressed 'Made in
England' and other marks
tallest H. 195mm
\$100 – \$200

- 82 P & G Ceramics
Specimen vase
ceramic with poured brown, white and
yellow glazes
manufacturer's label 'P & G Ceramics –
Made in New Zealand' affixed to the base
H. 145mm
\$30 – \$50



APPLIED ARTS

- 83 Frank Carpay for Crown Lynn
Hand-potted oval platter
hand-painted ceramic with a stylised fish in
black, green and red, c.1950s
signed Werk and numbered 765-7; printed
factory mark
W. 305mm
\$800 – \$1200
- 84 Frank Carpay for Crown Lynn
Large hand-potted platter
hand-painted ceramic with stylised floral and
geometrical design, c.1950's
signed Werk, inscribed W.P.-4 and with
printed factory mark to the base
D. 360mm
\$1700 – \$2500
- 85 Te Ariki (Onehunga Woollen Mills)
Travel rug
with a tukutuku panel design in green,
brown, orange and white
original Woolmark label attached
1790 x 1460mm
\$300 – \$500
- 86 Early Manatunga (Roslyn, Dunedin)
Travel rug
with a tukutuku panel pattern in pale blue,
olive, royal blue and cream
original 'Maori for Keepsake' label attached
1850 x 1460mm
\$400 – \$600
- 87 Kaiapoi Huia (Kaiapoi Textiles Ltd)
Travel Rug
in a green, brown, black and white tartan
design
original Woolmark label attached
1700 x 1300mm
\$200 – \$400
- 88 Kaiapoi Huia (Kaiapoi Textiles Ltd)
Travel Rug
in a turquoise, green, olive, black and white
tartan design
original Woolmark label attached
1800 x 1470mm
\$200 – \$400
- 89 Early Onehunga Woollen Mills
Travel rug
in an orange, green, blue and black tartan
design
original smaller tiki label attached
1820 x 1450mm
\$200 – \$400



86



83



84

- 90 Early Kaiapoi Woollen MFG.Co
(Christchurch)
Travel rug
in a dark red, brown, khaki and white tartan
pattern with green and orange details
original Maori Chief head label attached
1810 x 1300mm
\$100 – \$200
- 91 Onehunga Mills
Smaller travel rug
in a green, brown, beige and orange tartan
design
original Woolmark label
1515 x 940mm
\$100 – \$200
- 92 Levi Borgstrom
Carved wooden ladle
with a tag inscribed 'Spoon of Kauri by Levi
Borgstrom. Bought 17/7/77 Paraparaumu'
L. 420mm
Provenance: Estate of Simon Manchester
\$250 – \$500
- 93 Christine Boswijk
Holding Space
low fired ceramic with impressed quartz
D. 900mm
\$1000 – \$2000
- 94 Giovanna Ponti
Onda
glazed ceramic
titled, signed and dated 1985-86 and
inscribed 'Elam School of Fine Arts' verso
420 x 420mm
\$300 – \$500



- 85
- 87
- 95 Chris Weaver
Teapot
black glazed porcelain with bent wood handle
potter's mark to the foot rim
W. 175mm
\$100 – \$200
- 96 Len Castle
Shallow bowl
stoneware with good crackle semi matt talc white glaze over saturated iron underglaze
incised potter's initials to the base
D. 285mm
\$300 – \$600
- 97 Mirek Smisek
Unusual large green glazed footed bowl
stoneware with poured green crackled glaze
impressed potter's mark to the foot
D. 195mm
\$200 – \$400
- 98 Mirek Smisek
Footed bowl
stoneware, the speckled ash glaze in a gradation of greens and browns, the body decorated with a rhombus pattern
impressed potter's mark near the foot
D. 140mm
\$100 – \$200

- 99 Mirek Smisek
Wine flagon
stoneware ribbed body with dark grey glaze and wax-resist decoration, original cane stopper
impressed potter's mark to the base
H. 270mm
\$150 – \$300
- 100 Mirek Smisek
Wine flagon
stoneware with poured brown ash glaze and ribbed body, original cane stopper
incised potter's signature to the base
H. 265mm
\$200 – \$400
- 101 Doreen Blumhardt
Globular vase
stoneware with olive-green glaze thickly poured over light jun-type glaze, tenmoku glaze to the top rim
potter's mark near to the foot; original label to the base partially covered by an old lot number
H. 170mm
\$250 – \$400
- 102 Doreen Blumhardt
Large shallow bowl
stoneware with speckled matted grey glaze to the interior, tenmoku to the exterior
impressed potter's mark to the base
D. 315mm
\$100 – \$200
- 103 Milton Moon (Australia, 1926-)
Stoneware bowl
with blue iris decoration
signed to the base
D. 170mm
\$100 – \$200
- 104 Barry Brickell
Large bowl
ash glazed stoneware, the upper rim with jun glaze splashes over interlaced relief pattern
impressed potter's mark to the base
D. 315mm
\$100 – \$200
- 105 Campbell Hegan
Two lidded jars
stoneware, the first with jun glaze, the second with green olive ash glaze
both with impressed potter's mark to the foot
tallest H. 170mm
\$130 – \$250
- 106 Elisabeth Matheson (Paka Pottery)
Milk jug
with iridescent blue glaze
incised potter's mark to the base (with number 3 and initials KG)
W. 140mm
\$50 – \$100
- 107 Chester Nealie
Bottle vase
stoneware with crackled celadon glaze and shell impression
potter's mark to the base
H. 150mm
\$100 – \$200
- 108 Chester Nealie
Small teapot with cane bound handle
stoneware with crackled shino glaze and gestural decoration in relief
potter's mark to the base
W. 130mm
\$100 – \$200
- 109 Rosemary McClay (Brittain)
Lady money box
stoneware
H. 155mm
\$30 – \$50
- 110 Penny MacLeod
Dragonfly lustre box
porcelain
signed to the base
D. 130mm
\$30 – \$50
- 111 Peter Collis
Small raku fired box
earthenware
H. 100mm
\$40 – \$80
- 112 Scott Hockenhull
Winged insect
painted and partially glazed stoneware
L. 105mm
\$30 – \$50
- 113 Mirek Smisek
Small lidded jar
salt glazed stoneware
impressed potter's initials mark to the foot rim
H. 120mm
\$40 – \$80



- 114 New Zealand Pottery
Selection of tableware
glazed stoneware, comprising a pair of plates
by Warwick Lidgard, a Peter Oxborough
casserole and an unmarked plate
potter's mark to the bases
largest D. 210mm
\$60 – \$120

- 115 Castagnon, Nogaro (France)
Shaped liquor bottle
ceramic with yellow glaze
manufacturer seal to the handle, impressed
no. 494 to the base
H. 250mm
\$60 – \$120



A PRIVATE COLLECTION OF JAPANESE STUDIO POTTERY

- 116 Shimaoka Tatsuzo
Large bowl
stoneware with rope and slip inlaid
decoration
D. 180mm
\$350 – \$600
- 117 Mashiko Pottery
Stoneware jar attributed to Hamada Shoji
decorated with iron painted gestural design
H. 175mm
\$600 – \$1000
- 118 Mashiko Pottery
Stoneware plate attributed to Hamada Shoji
decorated with green and brown net design
D. 200mm
\$300 – \$500
- 119 Mashiko Pottery
Stoneware plate attributed to Hamada Shoji
painted with iron gestural design over a jun
glazed background with wax-resist cross
decoration
D. 240mm
\$400 – \$600
- 120 Mashiko Pottery
Five yunomi (teacups) attributed to
Hamada Shoji
stoneware with iron glazes and
wax-resist design
H. 85mm
\$200 – \$300
- 121 Japanese Studio Pottery
Spotted and ribbed vase attributed
to Fujimoto Yoshimichi
stoneware
painted signature to the base
H. 240mm
\$100 – \$200

- 122 Japanese Studio Pottery
Slab vase attributed to Kawai Takeichi
stoneware with nuka and kaki glazes
H. 205mm
\$200 – \$400
- 123 Japanese Studio Pottery
Slab vase attributed to Kawai Kanjiro
stoneware decorated with green and brown
gestural design over a tenmoku background
H. 175mm
\$200 – \$300
- 124 Mashiko Pottery
Two matched mugs in the style of Hamada
Shoji
stoneware with wax-resist decoration;
together with a pair of wine cups in the
manner of Kawai Kanjiro
tallest 150mm
\$100 – \$200
- 125 Mashiko Pottery
Jar in the manner of Hamada Shoji
stoneware with dark brown brushwork over
a grey glazed background
H. 220mm
\$130 – \$250
- 126 Mashiko Pottery
Two platters attributed to Sakuma Totaro
stoneware decorated with gestural tenmoku
and kaki glazes depicting pine trees
larger W. 255mm
\$200 – \$400
- 127 Japanese Studio Pottery
A set of five squared dishes attributed to
Kondo Yuzo
blue and white porcelain painted with
pomegranate sprays
painted signature to the sides
W. 145mm (each)
\$100 – \$200
- 128 Bizen Ware
Handled vase attributed to Isezaki Jun
woodfired stoneware
incised mark to the base
H. 240mm
\$100 – \$200
- 129 Murata Gen (Mashiko Pottery)
Faceted vase
stoneware with iron brushwork over
nuka glaze
potter's mark to the base
H. 195mm
\$125 – \$300
- 130 Japanese Shigaraki Ware
Jar
woodfired stoneware
incised unidentified potter's mark to the base
H. 200mm
\$100 – \$200
- 131 Mashiko Pottery
Globular bottle vase
stoneware, decorated with wax-resist
medallions with gestural decoration over a
rich kaki glaze
impressed unidentified potter's mark to the
base
H. 210mm
\$100 – \$200

- 132 Mitsuru Kimura (Mashiko Pottery)
Ribbed bottle vase
stoneware with thick nuka glaze drops over
tenmoku
potter's mark to the base
H. 290mm
\$150 – \$300
- 133 Japanese Studio Pottery
Hexagonal vase in the manner of Kawai
Takeichi
stoneware with flambé glaze
H. 255mm
\$150 – \$300
- 134 Shimaoka Tatsuzo
Square section bottle vase
stoneware with tenmoku glaze and
impressed rope design
incised potter's mark to the base
H. 180mm
\$400 – \$800
- 135 Shimaoka Tatsuzo
Square section bottle vase
stoneware with impressed and inlaid
diagonal cord design beneath a cream glaze
H. 180mm
\$400 – \$800
- 136 Shimaoka Tatsuzo
Large baluster vase
stoneware with impressed and inlaid
herringbone pattern in brown and cream
incised potter's mark to the base
H. 298mm
\$800 – \$1200
- 137 Contemporary Korean Studio Pottery
Large squat vase attributed to Shin Sang-Ho
porcelain painted with a flowering prunus
branch beneath a very pale celadon glaze
incised mark to the base
D. 290mm
\$200 – \$400
- 138 Mashiko Pottery
Large baluster vase
stoneware with poured thick nuka and
tenmoku glazes over kaki
H. 265mm
\$150 – \$300
- 139 Mashiko Pottery
Shoulder vase
stoneware with poured nuka over tenmoku
glazes and geometrical design to the
shoulder
H. 235mm
\$100 – \$200
- 140 Japanese Studio Pottery
Bottle vase
stoneware with salt glaze and painted
decoration
impressed unidentified potter's mark near
the foot
H. 290mm
\$100 – \$200
- 141 Mashiko Pottery
Large slab vase
stoneware with green gestural decoration
on a kaki glaze
unidentified potter's mark to the base
W. 270mm
\$150 – \$400



- 142 Japanese Studio Pottery
Small slab vase attributed to Kawai Takeichi
stoneware with cream, blue and brown
glazes, painted with stylised floral medallions
H. 150mm
\$150 – \$300
- 143 Japanese Studio Pottery
Bottle vase attributed to Kawai Hirotsugu
stoneware with gestural decoration in black,
red and green on a very rich kaki glaze
H. 165mm
\$150 – \$300
- 144 Mashiko Pottery
Vase in the style of Hamada Shoji
stoneware, decorated with an olive wax-
resist design over a kaki glaze
H. 225mm
\$150 – \$300
- 145 Ichiro Kimura (Mashiko Pottery)
Shaped cylinder vase
stoneware with poured cream nuka glaze
over tenmoku and kaki glazes
impressed potter's mark to the foot
H. 205mm
\$150 – \$300
- 146 Mashiko Pottery
Bottle vase
stoneware with tenmoku glaze
H. 230mm
\$100 – \$200
- 147 Mashiko Pottery
Ribbed vase
stoneware with beige glaze
H. 215mm
\$100 – \$200
- 148 Mashiko Pottery
Short square section bottle vase
stoneware with cream glaze and olive
brushwork
H. 180mm
\$100 – \$200
- 149 Suzuki Goro (attrib.)
Cylindrical vase
stoneware with shino glaze and painted
gestural decoration
incised signature to the base
H. 235mm
\$150 – \$300

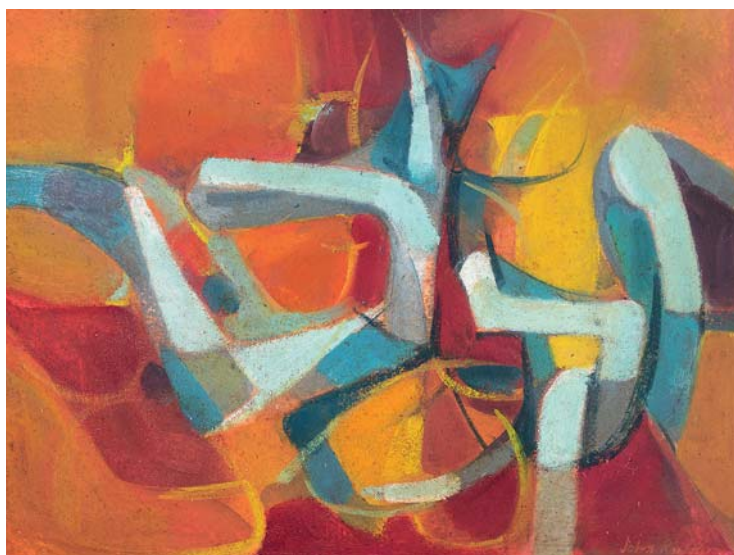




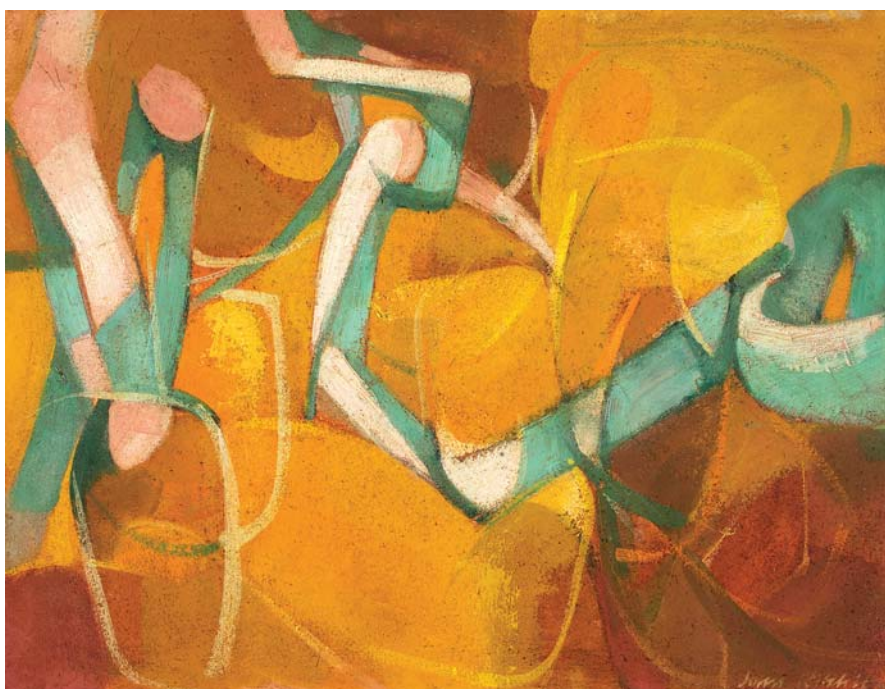
NEW COLLECTORS

ART

PROPERTY FROM THE ESTATE OF JOHN
AND JUNE RITCHIE, AUCKLAND



150. John Ritchie
Untitled
mixed media on Masonite
signed
460 x 612mm
\$2000 – \$3000



151. John Ritchie
Encounter of Pine Branches
oil and mixed media on Masonite
signed: title inscribed, dated 1960 – '65 and inscribed *Cat No. 6* on original catalogue label affixed verso
460 x 611mm
\$2000 – \$3000



152. John Ritchie
Bombed Railway Building, Caserta, Southern Italy
 watercolour
 signed; title inscribed and signed verso; original
 McGregor Wright's, Wellington label affixed verso
 230 x 306mm
 \$1000 – \$2000



153. John Ritchie
Moonlight, Egypt (Maadi Camp)
 watercolour
 signed; title inscribed, signed and inscribed
 No. 2 LIEUT. JOHN RITCHIE M.E.F verso
 258 x 310mm
 \$1000 – \$2000



154. John Ritchie
Haystacks, Cerbaia, Italy
 watercolour
 signed; title inscribed and signed verso
 237 x 308mm
 \$1000 – \$2000



155. John Ritchie
Untitled – Abstracted Landscape with Farmhouse
 watercolour
 signed and dated 1950
 378 x 477mm
 \$1500 – \$2500



156. John Ritchie
Untitled – Abstract Forms
 gouache on paper
 signed
 483 x 637mm
 \$1000 – \$2000



157. John Ritchie
Recumbent Forms – Long Bay
 oil and mixed media on board
 signed; title inscribed verso; dated 1966 – 1970 on label affixed verso
 597 x 748mm
 \$2000 – \$3000



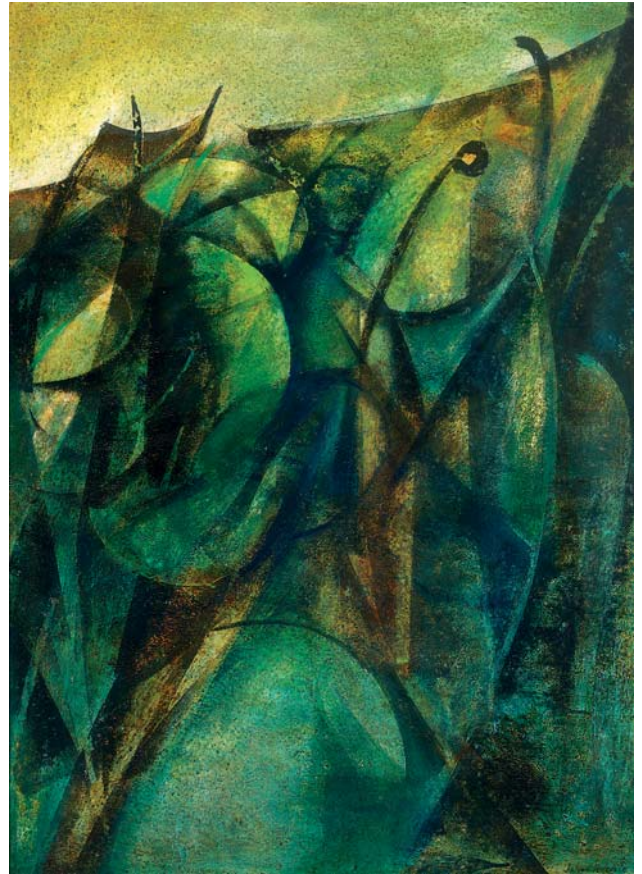
158. John Ritchie
Untitled – Abstracted Landscape
 watercolour
 signed and dated 1950
 418 x 520mm
 \$1500 – \$2500



159. John Ritchie
Untitled – Abstract Landscape with Tree Forms
 watercolour
 signed and dated 1950
 375 x 495mm
 \$1500 – \$2500



160. John Ritchie
Untitled – Organic Image
 mixed media on board (circa 1976)
 signed
 590 x 898mm
 \$1000 – \$2000



161. John Ritchie
Organic Image
 mixed media on board
 signed: title inscribed and dated 1976 – 1980 on artist's catalogue label
 affixed verso
 884 x 640mm
 \$1000 – \$2000



162. John Ritchie
Wind and Wave, Kuaotunu Beach
 oil on board
 signed; title inscribed on artist's label affixed verso
 590 x 815mm
 \$1000 – \$2000



163. John Ritchie
Turangi Landscape
 oil on board
 signed and dated '78; title inscribed and signed on original Rotary Club,
 Frankton label affixed verso
 595 x 902mm
 \$1500 – \$2500



164. June Ritchie
Turoa Downhill
 etching, a/p
 title inscribed, signed and dated 1986
 283 x 411mm
 \$400 – \$700



165. June Ritchie
Reeds – Rotopounamu II
 etching, 7/40
 title inscribed, signed and dated 1981
 353 x 307mm
 \$200 – \$350



166. June Ritchie
Rainbow after Whiteout: Rock Garden
Whakapapa
 second state etching, 1/40
 title inscribed, signed and dated 1986
 295 x 420mm
 \$400 – \$700



167. June Ritchie (née Blue)
Landscape with Sheds
 watercolour
 signed and dated 1950
 247 x 350mm
 \$500 – \$800



168. June Ritchie (née Blue)
Untitled – View of the Harbour
 watercolour
 signed and dated 1954
 342 x 400mm
 \$500 – \$800



169. June Ritchie
Whakapapa: Delta Trail West
 monoprint
 title inscribed, signed and dated 1994
 560 x 408mm
 \$300 – \$500



170. June Ritchie
Impact Magenta – VI
 monoprint
 title inscribed and signed
 760 x 588mm
 \$250 – \$400



171. Edward Debren
Julie's Hat
 etching, 2/45
 title inscribed and signed
 280 x 210mm
 \$100 – \$200



172. Malcolm Warr
Kowhai Stream, Peka Peka
 silkscreen print, 13/30
 title inscribed, signed and dated '76
 735 x 552mm
 \$150 – \$250



173. Garth Tapper
Untitled - At the Bar
oil on board
signed
204 x 300mm
\$2000 - \$3500



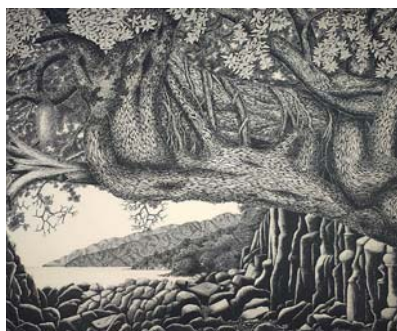
174. Ida Eise
Daisies
oil on canvasboard
signed; original 'Ida Eise Bequest Exhibition'
label affixed verso
424 x 370mm
\$600 - \$900



175. Ron Tizard
Mangaokewa Gorge
oil on board
signed; title inscribed and signed verso
450 x 595mm
\$100 - \$200



176. Roy Cowan
Lobster
lithograph, 1/10
signed
483 x 637mm
\$500 - \$800



177. Rei Hamon
Untitled - Coastal View
lithograph, 51/600
signed and dated 1966 on the plate
472 x 573mm
\$100 - \$200



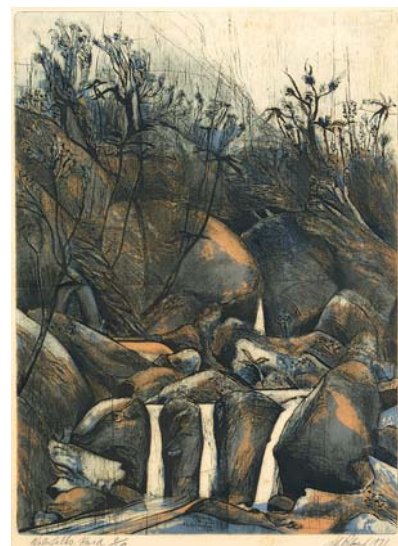
178. Marilyn Webb
Easter - Lake Mahinerangi
monoprint
title inscribed, signed and dated '82
260 x 362mm
\$500 - \$800



179. Janet Munro
Field Estuary
monoprint
title inscribed, signed and dated '86
420 x 293mm
\$100 - \$200

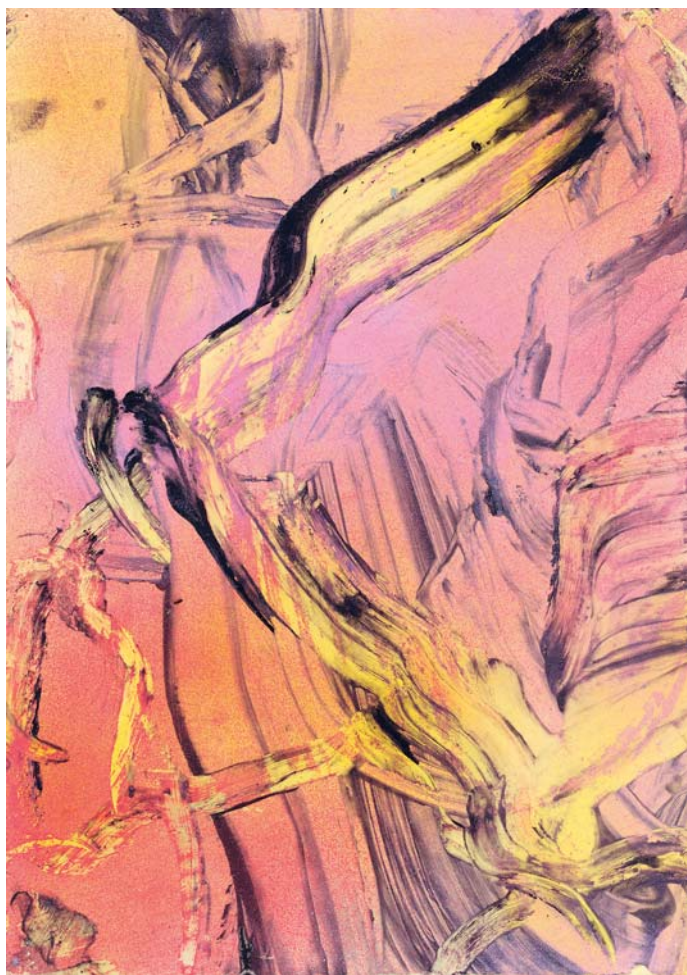


180. Carole Shephard
Untitled
mixed media and collage
signed and dated '82
408 x 300mm
\$120 - \$250



181. Stanley Palmer
Waterfalls, Huia
bamboo engraving, 6/60
title inscribed, signed and dated 1971
580 x 425mm
\$400 - \$700

FURTHER ITEMS FROM MIXED VENDORS



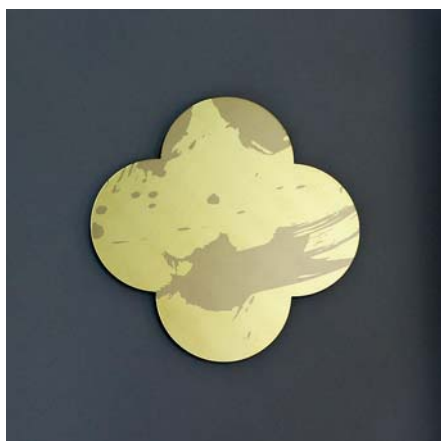
182. Judy Millar
Untitled
oil and acrylic on paper, 2016
295 x 208mm
\$2800 – \$3600



183. Sara Hughes
Four Colours Yellow Study
acrylic on linen
title inscribed, signed and dated 2006 verso
400 x 400mm
\$2000 – \$3500



184. Max Gimblett
Remembrance
silkscreen on lacquered brass quatrefoil
inscribed N°8241, signed and dated 2015 on printed artist label verso
250 x 250mm
\$2000 – \$3000



185. Max Gimblett
Remembrance
silkscreen on lacquered brass quatrefoil
inscribed N°9237, signed and dated 2015 on printed artist label verso
250 x 250mm
\$2000 – \$3000



186. Max Gimblett
Remembrance
silkscreen on lacquered brass quatrefoil, 6 parts
each numbered, signed and dated 2015 on printed artist label verso
250 x 250mm: each; installation size variable
\$6000 – \$9000



187. Simon Payton
Untitled - Reclining Nude
graphite on paper
signed
780 x 595mm
\$600 - \$1000



189. Ross Jones
Freedom
giclee print, 13/49
title inscribed, signed and dated 2011
570 x 1010mm
\$2500 - \$4000



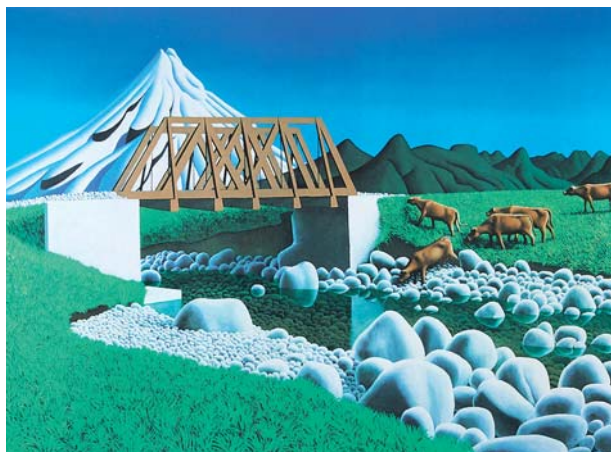
191. Dick Frizzell
Five Star
colour lithograph, 11/100
title inscribed, signed and dated '15
700 x 990mm
\$1500 - \$3000



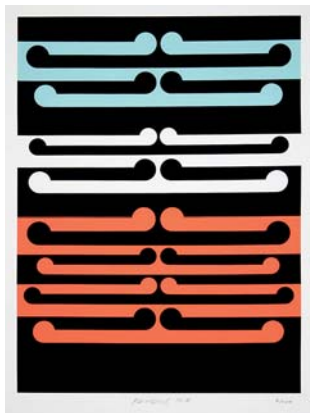
188. Bill Hammond
Singer Songwriter III
lithograph, edition of 100
title inscribed, signed and dated 2001 on the plate
687 x 845mm
\$4000 - \$6000



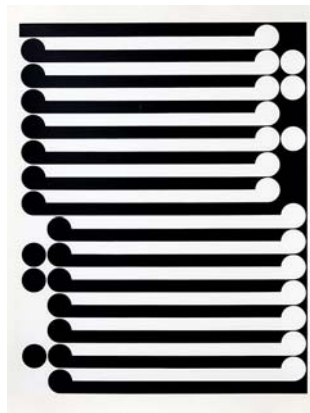
190. Grahame Sydney
Road to Lauder
stone lithograph, 49/50
title inscribed, signed and dated Feb 2007
560 x 650mm
\$1500 - \$3000



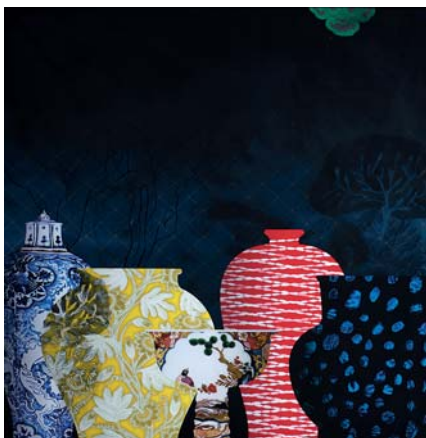
192. Michael Smither
Alfred Road Bridge
screenprint, 17/50
signed with artist's initials MDS and dated 2014
490 x 645mm
\$1800 - \$2800



193. Gordon Walters
Painting No. 7
 screenprint, 56/100 (2016)
 title inscribed, Walters Estate blindstamp (under the mount)
 505 x 395mm
 \$4000 – \$6000



194. Gordon Walters
Untitled (1978)
 screenprint on archival paper, 87/100
 Walters Estate blindstamp, 2018
 1055 x 805mm
 \$7000 – \$10 000



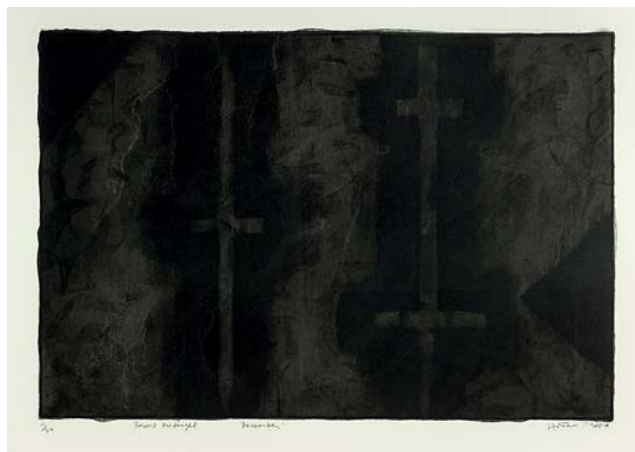
195. Kim Meek
Nogizaka
 archival digital print, 2011, 2/3
 1000 x 1000mm
 \$4000 – \$6000



196. Kim Meek
Otemachi
 archival digital print, 2011, 2/3
 1000 x 1000mm
 \$4000 – \$6000



197. Juliet Peter
Shells
 lithograph, 3/16
 title inscribed and signed
 295 x 385mm
 \$1200 – \$2000



198. Ralph Hotere
Round Midnight – December
 lithograph, 11/24
 title inscribed, signed and dated 2000
 560 x 750mm
 \$6000 – \$8000



199. Emily Wolfe
Untitled
 acrylic on canvas
 signed and dated 2000 verso
 460 x 660mm
 \$3000 – \$5000



200. Elliot Collins
Marilyn
 oil on canvas
 title inscribed, signed and dated 2010 verso
 1205 x 1450mm
 \$3000 – \$5000



201. Brendon Wilkinson
Total Glamour
 oil on canvas, two panels
 560 x 710mm and 201 x 254mm
 Exhibited: 'Brendan Wilkinson: Somnambulant Perimeter – 9 recent works', Peter McLeavey Gallery, Wellington, May 2002
 \$4000 – \$6000



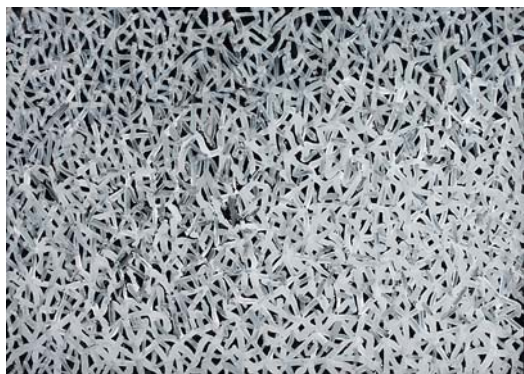
202. Tony de Lautour
Roughcast
 oil on board
 signed with artist's initials T. D. L.
 450 x 610mm
 Provenance: Private collection, Auckland. Purchased from Art+Object, 19 September 2012, Lot No. 60. Collection of Les and Milly Paris, Wellington.
 \$6000 – \$9000



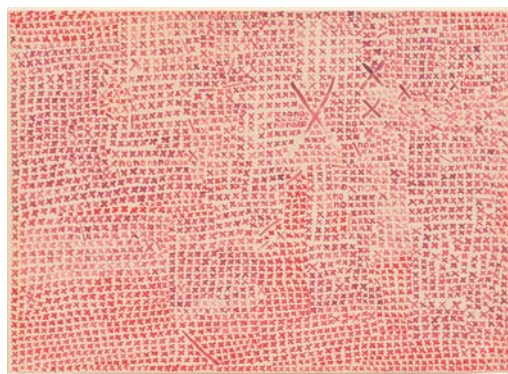
203. Leon van den Eijkel
Long Cloud at Rangiputa
 lacquer and enamel on MDF
 title inscribed, signed and dated 1999 verso
 1003 x 1000mm
 \$2000 – \$3000



204. Seraphine Pick
Untitled
 oil on canvas
 680 x 915mm
 Provenance: Private collection, Auckland
 \$3000 – \$5000



205. Andrew Blythe
Untitled
acrylic on paper
630 x 910mm
\$2000 – \$3000



206. Andrew Blythe
Untitled
acrylic on paper
signed with initials AB and dated 2002
600 x 845mm
\$2000 – \$3000



207. Jeffrey Harris
Untitled
ink on paper
signed and dated '70
205 x 330mm
\$800 – \$1600



208. Don Peebles
New York Drawing
ink, watercolour and tea
title inscribed, signed and dated NY '82
210 x 272mm
\$600 – \$1000



209. John Reynolds
Acronyms Etc №554
(*World War III Blues*)
paint marker on canvas
title inscribed, signed
and dated 2205 verso
105 x 105mm
\$400 – \$600



210. John Reynolds
Acronyms Etc №762
(*Blax-ploit-ation*)
paint marker on canvas
title inscribed, signed
and dated 2007 verso
105 x 105mm
\$400 – \$600



211. John Reynolds
Cloud Sorter №20
paint marker on canvas
title inscribed, signed
and dated 2009 verso
105 x 105mm
\$200 – \$400



212. John Reynolds
Acronyms Etc №517
(*Pretty and Dumb*)
paint marker on canvas
title inscribed, signed and
dated 2005 verso
105 x 105mm
\$400 – \$600



213. Philippa Blair
Not Quite Dead Heart
 etching, 4/25
 title inscribed, signed and dated 1984
 190 x 163mm
 \$200 – \$350



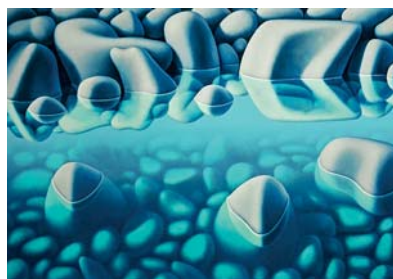
214. Rodney Fumpston
Sabatical
 etching, 1/30
 title inscribed and signed
 755 x 1255mm
 \$300 – \$500



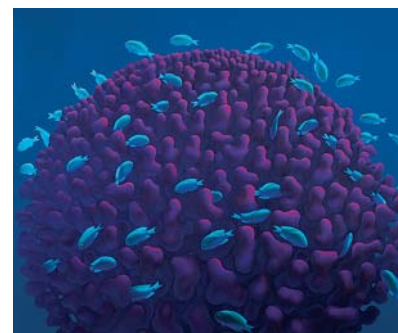
215. Norman Lindsay
Our Earth
 etching, 1936
 signed
 180 x 140mm
 \$1000 – \$1500



216. Michael Smither
Sarah with Baked Beans
 screenprint, 35/80
 signed with artist's initials
 MDS and dated '07
 755 x 550mm
 \$1500 – \$2500



217. Michael Smither
Stony River
 screenprint, 38/72
 signed with artist's initials
 MDS and dated 2011
 705 x 1000mm
 \$1600 – \$2600



218. Michael Smither
Coral Head with Fish
 screenprint, 11/50
 signed with artist's initials
 MDS and dated 2013
 560 x 760mm
 \$1500 – \$2500



219. Charles Blackman
Firebird
 serigraph, 112/150
 title inscribed and signed
 1220 x 800mm
 \$1200 – \$2000



220. Mark Ussher
Honey I'm Home
 acrylic stencil on paper, 10/22
 title inscribed, signed and dated 2009
 255 x 200mm
 \$300 – \$600



221. Mark Ussher
Fancy Cakes
 acrylic stencil on paper, 10/23
 title inscribed, signed and dated 2009
 255 x 200mm
 \$300 – \$600



222. Kaws
Small Lie (Black, Brown and Gray)
 painted cast vinyl in original packaging, three parts
 manufactured by Medicom, limited edition, 2017
 280 x 125 x 130mm: each
 \$3000 – \$5000



223. Medicom Toy x Andy Warhol
Marilyn Monroe Be@rbrick Figurine
 screenprinted plastic, two parts, with original
 packaging
 275 x 130 x 90mm
 \$800 – \$1500



224. Banksy
Wall Souvenir from The Walled Off Hotel
 mixed media sculpture accompanied by original
 numbered The Walled Off Hotel receipt, 2018
 Item №: 1000427
 90 x 58 x 30mm
 \$5000 – \$8000



225. Andy Warhol
Mao Pink
 silkscreen print by Sunday B. Morning
 inscribed verso *published by Sunday B. Morning and fill in your own signature*
 820 x 735mm
 \$1500 – \$2500



226. Andy Warhol
Marilyn (Gold Series – limited edition of 2000)
 silkscreen print by Sunday B. Morning
 inscribed verso *published by Sunday B. Morning and fill in your own signature*
 910 x 910mm
 \$1500 – \$2500



227. Andy Warhol
Marilyn
 silkscreen print by Sunday B. Morning
 inscribed verso *published by Sunday B. Morning and fill in your own signature*
 910 x 910mm
 \$1500 – \$2500



228. Andy Warhol
Flowers 11.66
 silkscreen print by Sunday B. Morning
 inscribed verso *published by Sunday B. Morning and fill in your own signature*
 900 x 900mm
 \$1500 – \$2500



229. Peter O'Hagan
*A Struggling Artist Sends a Letter To His Bank Manager
 From Hotel Villa D'Este, Lake Como*
 watercolour, gouache and tinted gum arabic
 signed; title inscribed, signed and dated June 2006 verso
 615 x 615mm
 \$1500 – \$3000



230. Angela Maritz
Floral Notes
 acrylic on canvas
 signed
 1015 x 1015mm
 \$2000 – \$3500



231. Rozi Demant
Black Butterflies
 acrylic on canvas
 title inscribed, signed and dated 2017 verso
 300 x 400mm
 \$4000 – \$5500



232. Krystie Wade
Joy & Delirium
 oil on board
 title inscribed verso
 1195 x 1195mm
 \$1500 – \$3000



233. Jane Evans
Study No. 8, In the Garden
 gouache on paper
 signed and dated 1978; title inscribed and signed verso
 385 x 560mm
 \$2500 – \$5000



234. Helen Schamroth
Life Threads – Flight of the Soul II
 mixed media
 title inscribed, signed and dated '89
 870 x 630mm
 \$1000 – \$2000



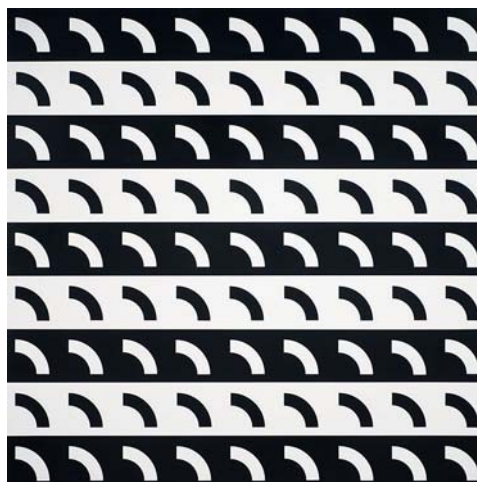
235. Gavin Hurley
Untitled
 oil on hessian
 signed with initials GH verso and dated '05
 1360 x 1000mm
 \$12 000 – \$18 000



236. Graham Fletcher
Untitled
 oil on canvas
 signed and dated 2002
 1252 x 1000mm
 \$5000 – \$8000



237. Valerie Nielsen
River
 oil on plywood, diptych
 title inscribed, signed and dated 1995/96 verso
 590 x 2795mm
 Provenance: Private collection, Auckland
 \$2000 – \$3000



238. Richard Thompson
Geneology
 acrylic on canvas
 title inscribed on original Gow Langsford Gallery label affixed verso
 1820 x 1820mm
 \$3000 – \$5000



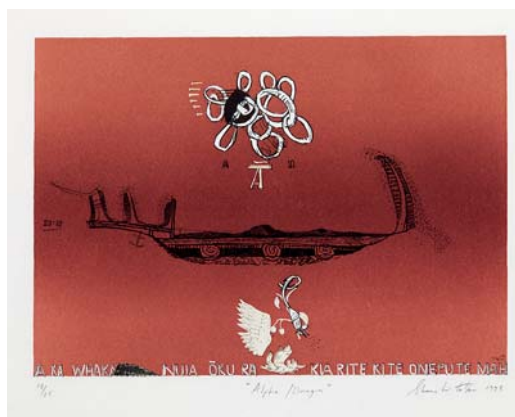
239. Sam Harrison
Seated Christ
woodcut on Fabriano, 2/16
signed and dated '09
1035 x 710mm
\$3000 – \$5000



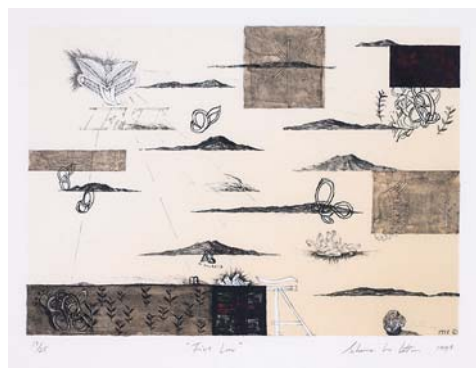
240. Simon Kaan
Untitled
etching, 1/10
signed and dated 2005
580 x 355mm
\$800 – \$1500



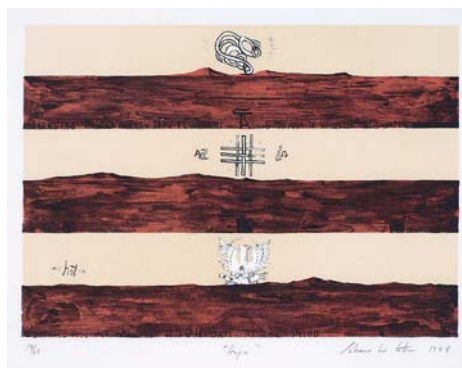
241. Ralph Hotere
A Drum Piece for Jack Body
lithograph, 16/24
title inscribed, signed and dated '88
525 x 650mm
\$3000 – \$5000



242. Shane Cotton
Alpha/Omega
lithograph, 19/25
title inscribed, signed and dated 1998
530 x 755mm
\$1500 – \$2800



243. Shane Cotton
Fiat Lux
lithograph, 19/25
title inscribed, signed and dated 1998
530 x 755mm
\$1500 – \$2500



244. Shane Cotton
Hopa
lithograph, 19/25
title inscribed, signed and dated 1998
530 x 755mm
\$1500 – \$2500



245. Colin McCahon

15 drawings for Charles Brasch

framed lithographs published by Hocken Library, Dunedin, signed and dated 1952
installation size variable

Reference

Colin McCahon Database (www.mccahon.co.nz) cm001655

\$7000 – \$12 000



246. Ralph Hotere

Mihi

acrylic on paper

title inscribed, signed and dated '82 and inscribed Notes
from the journal of Tangirau Hotere

770 x 563mm

Provenance: Private collection, Christchurch.

\$10 000 – \$12 000



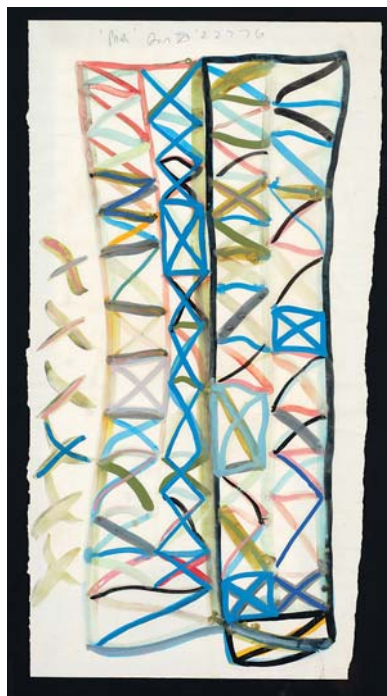
247. Richard Killeen
Stones and Clouds
 screenprint and acrylic on rag paper
 title inscribed, signed and dated 26 June 1991
 and inscribed cat no. 1285
 385 x 295mm
 \$1000 – \$2000



249. Heather Straka
Roxburgh – Minimalist
 oil on linen laid onto board
 title inscribed, signed and dated 2001 verso
 900 x 700mm
 \$5000 – \$8000



250. Lianne Edwards
Yellow Head
 recycled postage stamps and stamp hinges on board
 935 x 625mm
 Provenance: Vavasour Godkin Gallery
 \$3000 – \$5000



248. Allen Maddox
Pair
 watercolour on paper
 title inscribed, signed with artist's initials AM
 and dated 2 27 76
 1065 x 555mm
 \$5000 – \$8000



251. Richard Lewer
Pegboard Confessions (Bad Tempered)
 acrylic on pegboard, seven panels
 variously inscribed; signed verso
 1485 x 1440mm
 Exhibited: 'I Must Learn to Like Myself: A recent survey of works by Richard Lewer', The Waikato Museum of Art and History Te Whare Taonga o Waikato, 13 February – 15 August 2010. 'Richard Lewer: Nobody Likes a Show Off', Monash University of Art, Melbourne, Australia, 1 July – 5 September 2009.
 \$6000 – \$9000



252. Ian Scott
Lattice No. 101
 acrylic on canvas
 title inscribed, signed and dated February 1983
 1020 x 1020mm
 \$14 000 – \$18 000



253. Dick Frizzell
Only A Little Bit More and I'll Be Safe
 oil and enamel on canvas
 title inscribed, signed and dated 12-3-2014
 850 x 1500mm
 \$20 000 – \$30 000



254. Michael Smither
Rocks Revisited
 acrylic on board
 title inscribed, signed with artists' initials and dated 1981 verso
 350 x 350mm
 \$3000 – \$5000



255. Michael Smither
Untitled
 acrylic on board
 190 x 411mm
 \$2500 – \$4000



256. Gavin Chilcott
Untitled
 oil on found shopping bag
 660 x 1070mm
 \$800 – \$1500



257. Three publications on Colin McCahon
I Will Need Words (National Art Gallery, 1984), *Colin McCahon: A Survey Exhibition* (Auckland Art Gallery, 1972) and *Colin McCahon Religious Works 1946 - 1952* (Manawatu Art Gallery, 1975)
 \$200 – \$400



258. Peter O'Hagan
Sunflowers and Lace Curtain, Venice
 watercolour and gouache
 signed
 410 x 320mm
 \$3000 – \$5000



259. Peter O'Hagan
Sunflowers at Barry Ferguson's, Oyster Bay, Long Island, New York
 watercolour and gouache
 signed
 410 x 370mm
 \$3000 – \$5000



260. Herbert Harry Tornquist
Sunday at the Quarry
 oil on board
 signed
 435 x 640mm
 \$3000 – \$5000



261. John Holmwood
The Shopping Basket
 oil on board
 title inscribed, signed and inscribed *not for sale* verso
 535 x 685mm
 \$8000 – \$12 000



262. Helen Brown
Paihia, Bay of Islands
 oil on board
 signed and dated '71; title inscribed on
 original John Leech Gallery label affixed verso
 265 x 905mm
 \$5000 – \$8000



263. Helen Brown
Muriwai 3
 oil on canvas
 signed and dated '72; title inscribed on
 original John Leech Gallery label affixed verso
 700 x 900mm
 \$6000 – \$9000



264. Merylyn Tweedie
Untitled
mixed media and found object
310 x 260 x 15mm
\$800 – \$1500



265. Terry Stringer
Portrait of Evelyn Page
bronze, 2/3
signed and dated '84/85
320 x 215 x 200mm
\$7000 – \$10 000



266. Robert McLeod
I and K from the Group Series
oil on shaped board, triptych
title inscribed, signed and dated '09
H. 285mm; installation size variable
\$1500 – \$2000



267. Jeff Thomson
Untitled (Letterbox)
rural mailbox, corrugated iron, paint
signed and dated 1986
\$2000 – \$3000



268. John Reynolds
MaDGE GE-free WORLD
metallic oil-stick on folding umbrella
title inscribed, signed and dated 2002
H. 1010mm
\$500 – \$1000



269. Graeme D. Hitchcock
Going Solo
bronze, 2010 (unique)
450 x 280 x 380mm
\$5000 – \$7000



270. Ann Robinson
Twisted Flax Pod
 cast glass and resin-coated steel
 L. 1400mm
 \$25 000 – \$30 000



272. Sam Ireland
Table
 cast glass, two parts
 signed to the base and dated 2001
 310 x 385 x 105mm
 \$2000 – \$4000



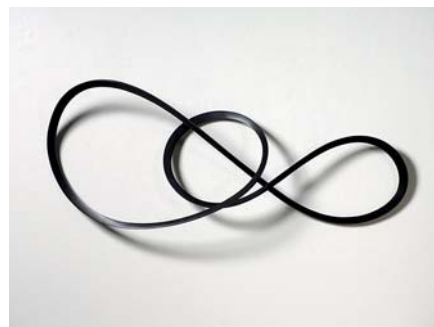
274. Terry Stringer
Archer's Table
 cast and patinated bronze, 3/3
 signed and dated '91
 735 x 440 x 440mm
 \$5000 – \$8000



271. Emma Camden
Untitled – Tower
 cast glass, unique
 signed to the base and dated NZ '00
 600 x 170 x 90mm
 \$5000 – \$8000



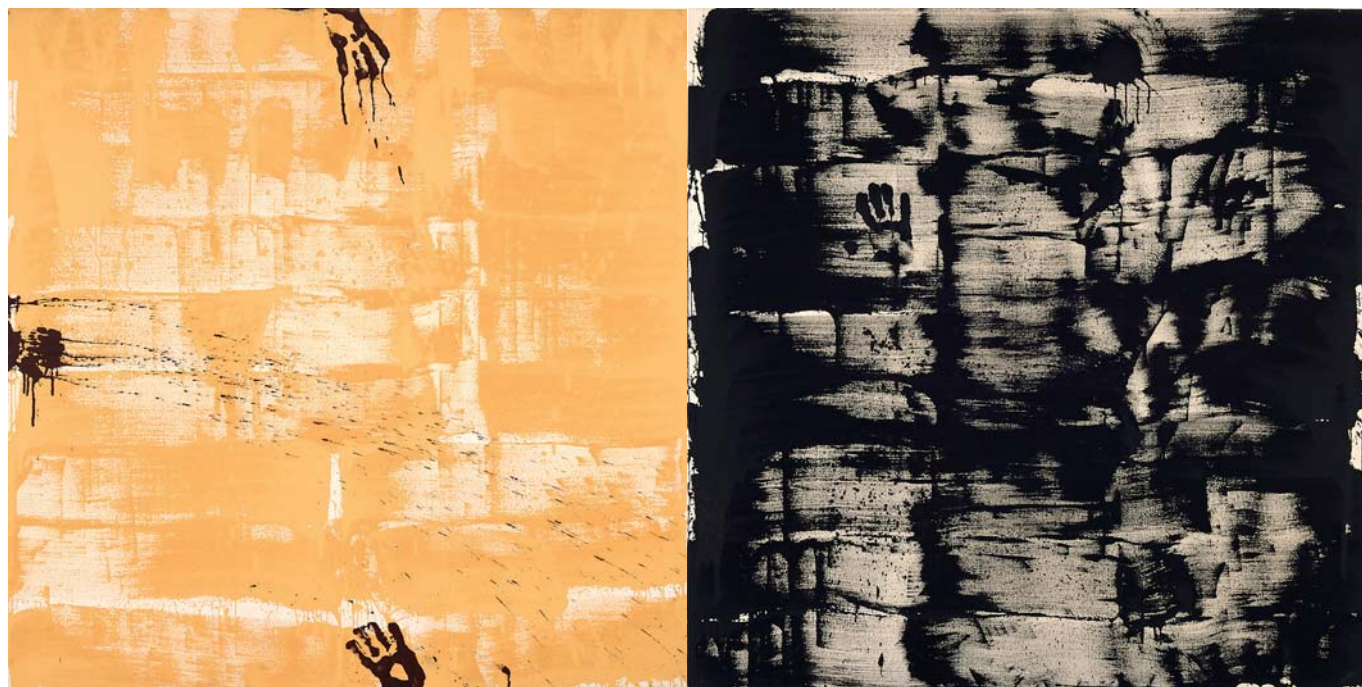
273. Ann Robinson
Splitting Pod
 cast glass, 1/1
 signed and dated '97
 275 x 350 x 255mm
 \$18 000 – \$25 000



275. Ray Haydon
Untitled
 shaped mahogany
 1550 x 610 x 240mm
 \$3000 – \$5000

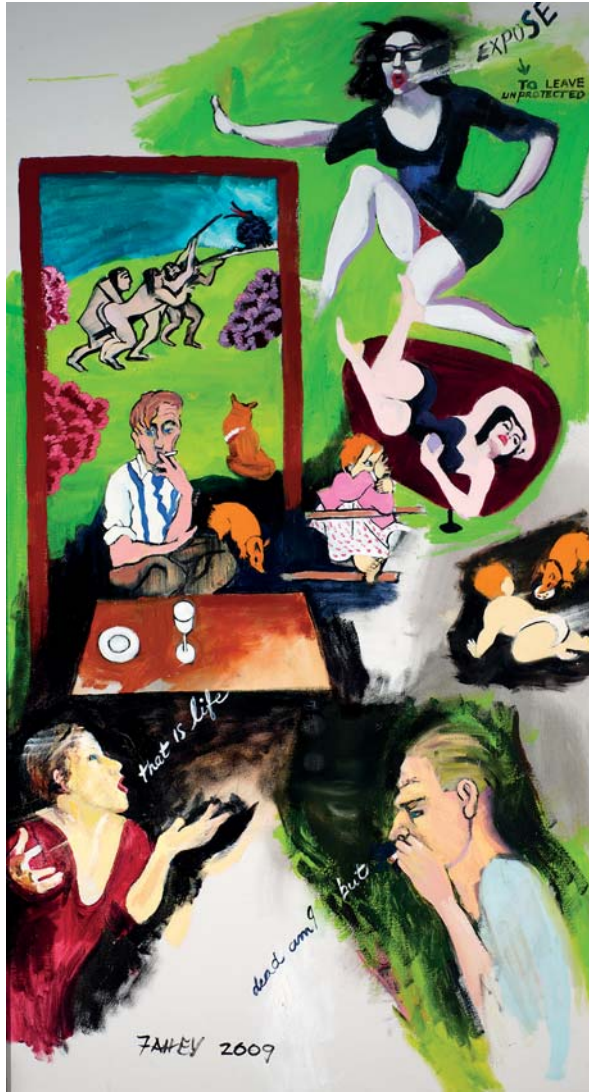


276. Peter Robinson
Bad Faith: The Presence and Absence of God
 lambda print
 signed: title inscribed verso
 1200 x 1680mm
 Provenance:
 Private collection, Nelson.
 Purchased from Anna Bibby Gallery, 2001.
 \$6000 – \$9000



277. Max Gimblett
These Hands that Merry
 acrylic polymer on canvas, diptych
 title inscribed, signed and dated 2005 verso
 1525 x 3050mm: overall
 \$15 000 – \$25 000

278. Jacqueline Fahey
that is life
 oil on canvas
 title inscribed, signed and
 dated June 2009
 1520 x 830mm
 \$15 000 – \$20 000



279. Mike Petre
Field Study 5
 ink, graphite, oil and acrylic on canvas, diptych, 2002
 title inscribed on original Milford Galleries, Dunedin label affixed verso
 1145 x 2650mm: overall
 \$12 000 – \$18 000



280. Ruth Watson

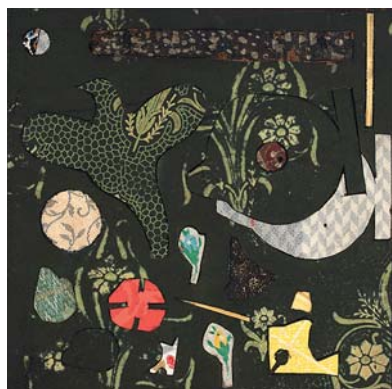
Small Map

collage elements with acrylic overlay
title inscribed and dated 1989 on original
Gow Langford label affixed verso
1200 x 1090mm
\$2500 – \$4500



282. Jacqueline Fraser

Elizabeth Taylor: Really I Was a Teeny Bit Late Because My Make-Up Man Was Useless, Darling
oilstick on fabric
title inscribed, signed and dated 2003
300 x 300mm
\$400 – \$700



284. Simon Ogden

Impressions/Expressions

linoleum on ply
title inscribed, signed and dated 2006 verso
465 x 465mm
\$500 – \$1000



281. Emily Karaka

Puketutu

mixed media and collage on board
title inscribed, signed and dated '15
690 x 990mm
\$1000 – \$2000



283. Jacqueline Fraser

Elizabeth Taylor: Really, Absolutely All the Men She Married Had an Absurdly Wonderful Sense of Humour
oilstick on fabric
title inscribed, signed and dated 2003
300 x 300mm
\$400 – \$700



285. Mark Wooller

To the Island

oil on canvas
title inscribed, signed and dated 2016 verso
710 x 610mm
\$3500 – \$5000



286. John Shotton Parker
Two Part Daylight
 oil on canvas
 signed and dated '03; title inscribed and
 dated 2003 verso
 695 x 1000mm
 \$4000 – \$6000



287. Dean Buchanan
View of Lion Rock
 oil on unstretched jute canvas
 signed and dated 2020
 1460 x 1760mm
 \$5000 – \$8000



288. Matthew Browne
Brown (as opposed to orange)
 oil on canvas
 title inscribed, signed with artist's initials MB and dated 2000 verso
 1520 x 1215mm
 \$2500 – \$4000



289. Gavin Chilcott
The Funeral Chorus
 oil on canvas
 title inscribed, signed and dated November
 '84 verso and inscribed Pam Adler Gallery, 518
 Broadway, New York City verso
 1720 x 1720mm
 \$4000 – \$7000



290. Richard Thompson
Felt
 acrylic on jute, 1998
 400 x 500mm
 \$500 – \$800



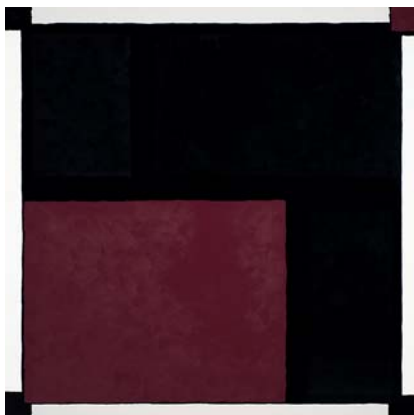
291. Michael Smither & Gian McGregor
Untitled
 oil and hand-painted shells on canvas
 signed and dated 2003 verso
 505 x 505mm
 \$1000 – \$2000



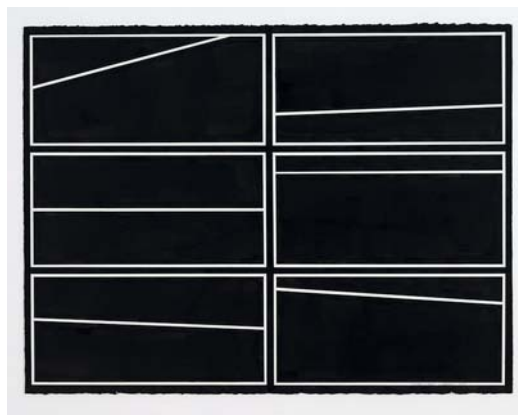
292. Trevor Moffitt
Jill No. 6
 oil on board
 signed and dated '80; title inscribed verso
 790 x 560mm
 \$5000 – \$8000



293. Michelle Bryant
Christchurch Man
 oil relief print on hand painted paper, 4/40
 title inscribed, signed and dated 2017
 1185 x 600mm
 \$1500 – \$2500



294. Leon van den Eijkel
Hidden Cloud, Fracto Stratus
 lacquer and enamel on MDF
 title inscribed, signed and dated 1997 verso
 1003 x 1000mm
 \$2000 – \$3000



295. Richard Thompson
6 Nights at Piha
 ink on paper
 title inscribed, signed and dated 2003
 575 x 770mm
 \$1000 – \$2000



296. Robert McLeod
Untitled - Abstract Composition
 charcoal, graphite and acrylic on paper
 signed with artist's initials RM and dated 4.9.79
 730 x 550mm
 \$800 – \$1500



297. Max Gimblett
Courage
 screenprint with gold foil on paper
 signed and dated 2011
 370 x 275mm
 \$1300 – \$2000



298. Ernest Buckmaster
Untitled – View of Piha Beach
 oil on canvas, c. 1955
 signed
 765 x 1055
 \$4000 – \$6000



299. Tim Wilson
The Lily Pond
 oil on canvas
 signed
 308 x 308mm
 \$1500 – \$2500



300. Marilyn Palmer-Story
First Light – Otago Peninsula
 watercolour
 signed
 280 x 575mm
 \$1000 – \$2000



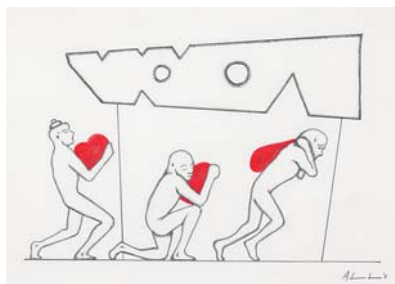
301. Lesley A Campbell
Shearing Gang, Hastings
 oil on canvas
 signed, title inscribed on original McGregor
 Wright Gallery label affixed verso
 440 x 590mm
 \$800 – \$1500



302. Lance O'Gorman
Art Party
 oil on canvas
 signed
 605 x 910mm
 \$2000 – \$3000



303. Mark Olsen
Untitled – skydiving
 acrylic on canvas
 signed
 1000 x 1500mm
 \$1500 – \$3000



304. Andy Leleisi'uao
Untitled [160068]
 graphite and watercolour on paper
 signed
 200 x 285mm
 \$500 – \$800



305. James Robinson
Untitled
 ink and watercolour
 signed with initials verso
 180 x 145mm
 \$200 – \$400



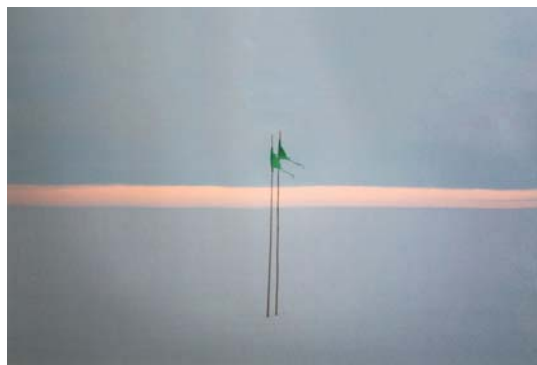
306. Anne Zahalka
Marriage of Convenience (Graham Budgett and Jane Mulfinger/ Artists)
 from the *Resemblance Series*
 Ilfochrome print, edition of 10 (1987)
 800 x 800 mm
 \$2000 – \$3000



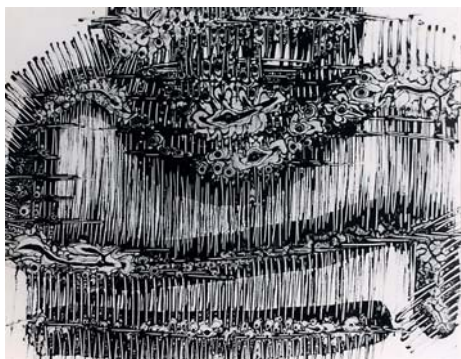
307. Anne Zahalka
The German woman (Ulrich Grossarth/Artist) from the *Resemblance Series*
 Ilfochrome print, edition of 10 (1987)
 800 x 800 mm
 \$2000 – \$3000



308. Grahame Sydney
Crevasse Probe
 Durst lambda digital print on archival paper, 5/10
 title inscribed, signed and dated 2007
 490 x 740mm
 \$1800 – \$2800



309. Grahame Sydney
Barrier 1
 durst lambda digital print on archival paper, 4/10
 title inscribed, signed and dated 2007
 505 x 735mm
 \$1800 – \$2800



310. Theo Schoon
Study in Design
 gelatin silver print
 signed and inscribed verso *Study in design with paint on glass sheets, the sheet of glass is used as a negative, or is reversed on another film, and then used as an ordinary photographic negative in the enlarger*
 290 x 373mm
 \$1000 – \$2000



311. Bill Culbert
Rail line on road
 gelatin silver print
 title inscribed verso and dated Port Chalmers, N.Z. 2002
 190 x 190mm
 \$600 – \$1000



312. Peter Peryer
Alligators, Auckland Zoo
gelatin silver print
185 x 270mm
\$2000 – \$3000



313. Peter Peryer
Doughnuts
gelatin silver print
title inscribed and dated 1983 verso
260 x 390mm
\$2500 – \$4000



314. Leon van den Eijkel
The Healing Art SCHS 11 (yellow)
cibachrome transparency and light box
505 x 752 x 170mm
title inscribed, signed and dated 1994 verso
\$1000 – \$2000



315. John McDermott
Bird, Meola Reef
gelatin silver print
360 x 530mm
\$300 – \$500



316. Vik Muniz
Group Portrait of the International Council of MoMA
photograph, 66/140
signed and dated 2003 on artist's original label affixed verso
420 x 1010mm
\$2000 – \$3000



317. Haru Sameshima
Untitled
gelatin silver print with
collage and copper wire
395 x 300mm
\$500 – \$900



318. Nobuyoshi Araki
Untitled
three Polaroids in colour, each signed and accompanied
by original Guarantee from Norton Gallery
110 x 90mm: each
\$2500 – \$3500



319. Seraphine Pick
On/Off
acrylic on canvas, diptych
signed and dated 2012
405 x 610mm
\$6000 – \$9000



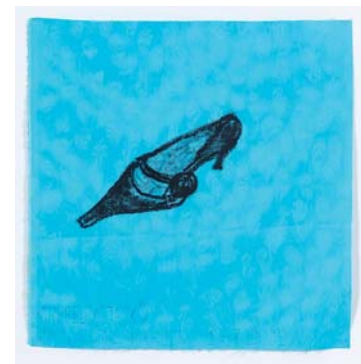
320. Liyen Chong
Untitled
mixed media on card, c. 2012
350 x 250mm
\$600 – \$1200



321. Liyen Chong
Untitled
mixed media on paper, c. 2012
340 x 245mm
\$600 – \$1000



322. Jacqueline Fraser
<<controlling supply of arms>>
oil stick on pink water stained taffeta, 2002
title inscribed and signed; title inscribed on
original Roslyn Oxley9 Gallery label affixed verso
320 x 320mm
\$500 – \$800



323. Jacqueline Fraser
<<rebel attack>>
oil stick on blue water stained taffeta
title inscribed, signed and dated
14.7.2002; title inscribed on original
Roslyn Oxley9 Gallery label affixed verso
320 x 320mm
\$500 – \$800



324. Jude Rae
Untitled
acrylic on canvas, brocade, fabric and cotton thread on four panels
325 x 275mm: each; 325 x 1100mm: overall
\$3000 – \$5000



325. Sheyne Tuffery
Future Primitives
monoprint, 1/1
title inscribed, signed and dated '99
1205 x 800mm
\$600 – \$1200



326. Sheyne Tuffery
New Pacific High Density
screenprint, 1/15
title inscribed, signed and dated 2002
645 x 415mm
\$400 – \$800



327. Rona Ngahua Osborne
Maumahara
screenprint, 5/50
title inscribed, signed and dated 2013
475 x 330mm
\$300 – \$600



328. Nigel Brown
Christmas Child
black and white woodcut, 6/10
title inscribed, signed and dated Auck '84
430 x 220mm
\$800 – \$1400



329. Kate van der Drift
Regarding Tomorrow (East Tamaki)
archival pigment print on matte
photo rag, 18/50
title inscribed and signed
160 x 150mm
\$200 – \$400



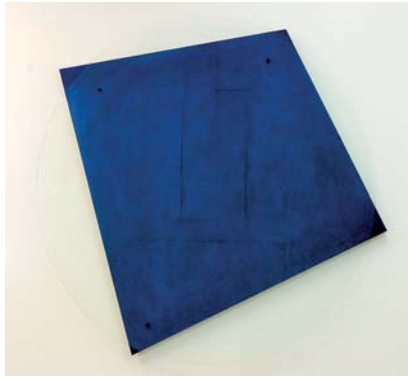
330. Olav Nielsen
Visitor
mezzotint, 6/8
title inscribed, signed
and dated 12-7-2005
340 x 200mm
\$400 – \$700



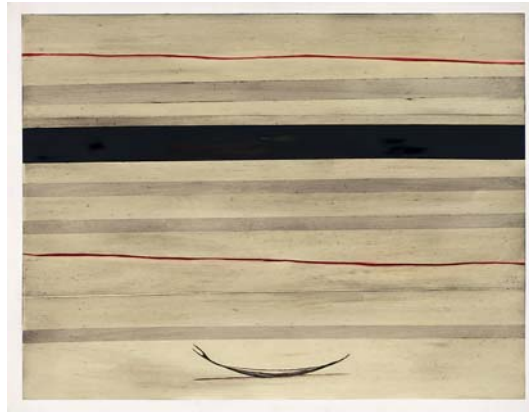
331. Richard Killeen
Know this place
xerox print
signed on the plate
190 x 255mm
\$200 – \$400



332. Rodney Fumpston
Sea
relief print, 2/30
title inscribed and signed
190 x 265mm
\$300 – \$600



333. James Ross
Blue Arcade (The Way Through IV)
 oil and crayon on panel with glass
 title inscribed, signed and dated 2000 verso
 1320 x 1445mm
 Exhibited: *Door to Door*, Fisher Gallery, September – October 2000
 \$3000 – \$5000



334. Simon Kaan
Untitled
 oil on board
 signed and dated 2003 verso
 795 x 1005mm
 \$4000 – \$6000



335. Gavin Chilcott
Interior with Figures
 oil on found shopping bag
 title inscribed, signed and dated Kaituna, November 2005 verso
 660 x 1070mm
 \$500 – \$1000



336. Gavin Chilcott
Angus Bull and New Grass
 oil on found shopping bag
 title inscribed, signed and dated Kaituna, Wairarapa, June 2007 verso
 655 x 970mm
 \$500 – \$1000



337. Mark Olsen
Louis and Francis
 oil on canvas
 signed; dated 2017 verso
 1200 x 800mm
 \$3000 – \$4500



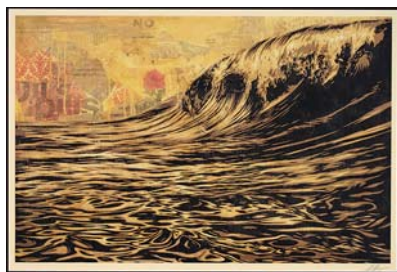
338. Mark Olsen
Untitled – Bearded Man
 oil on canvas
 signed, inscribed 0803 and dated 2017 verso
 1000 x 1000mm
 \$1500 – \$2500



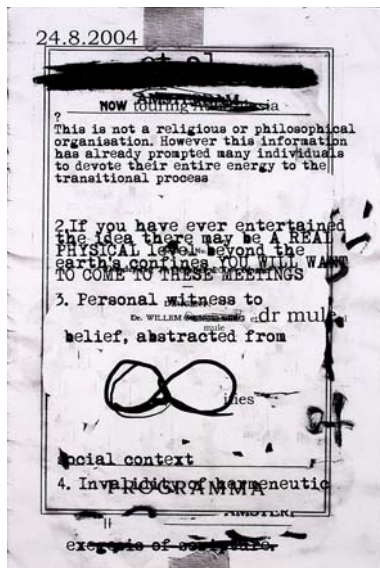
339. Richard Thompson
RT Green
 acrylic on aluminium
 signed with artist's initials RT and dated 2002
 verso, title inscribed and dated on original
 Gow Langsford Gallery label affixed verso
 1200 x 1200mm
 \$2000 – \$3500



340. Jeff Elrod
Untitled (Chinati Foundation Multiple)
 acrylic on canvas, 16/50
 title inscribed, signed and dated 2000 on original label affixed verso
 405 x 550 x 25mm
 \$1000 – \$2000



341. Shepard Fairey (OBEY)
Dark Wave
 offset lithograph
 signed
 600 x 890mm
 \$900 – \$1200



342. et al.
Untitled - Screenprint for the Venice Biennale
 screenprint, edition of 100 together with
 vinyl record
 1160 x 780mm
 \$2000 – \$3000



343. Agnes Martin
Untitled
 off-set lithograph, 2000
 120 x 115mm
 \$700 – \$1000



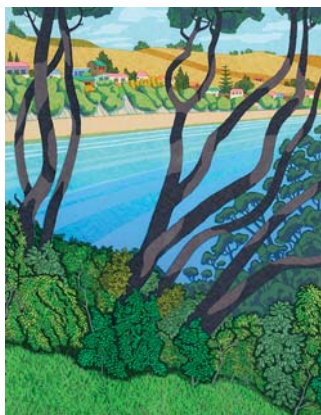
344. Takashi Murakami
Wink, 2001 (exhibition poster for Takashi Murakami exhibition, Wink, Vanderbilt Hall, Grand Central Terminal, 3/14 – 4/13, 2001)
 digital print on Kodak Professional paper
 signed and dated '01
 550 x 525mm
 \$1000 – \$2000



345. PJ Paterson
Twiggy
 digital print, 2/52
 title inscribed, signed and dated 2012
 260 x 210mm
 \$200 – \$400



346. Philippa Blair
Two German Hearts
 etching, 1/25
 title inscribed, signed and dated 1984
 190 x 165mm
 \$200 – \$350



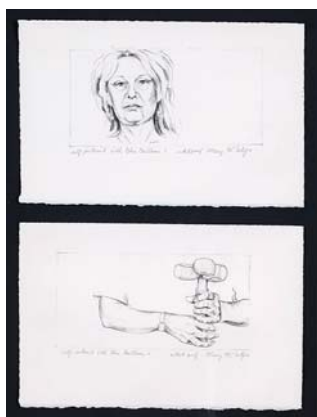
347. Fassett Burnett
Coopers Beach
 screenprint, AP
 title inscribed, signed and dated '87
 560 x 435mm
 \$300 – \$500



348. Tom Burnett
Still Life and Figure
 lithograph, 16/50
 title inscribed, signed and dated '84
 670 x 610mm
 \$300 – \$500



349. Rodney Fumpston
Arch
 etching, AP
 title inscribed and signed,
 inscribed *Home Decorating*
 660 x 570mm
 \$300 – \$600



350. Mary McIntyre
Self-portrait with Blue Balloon I and 2
 lithographs, a/p
 title inscribed and signed
 190 x 290mm each; 400 x 290mm: overall
 \$500 – \$800



351. Denis O'Connor
Hourglass
 lithograph, 8/86
 title inscribed, signed and dated '99
 740 x 520mm
 \$300 – \$600



352. Dick Frizzell
Mince
 lithograph, 7/100
 title inscribed, signed and dated 2011
 765 x 560mm
 \$900 – \$1600



353. Michael Smither
Untitled
 screenprint, artist's proof
 signed with artist's initials MDS
 480 x 660mm
 \$1000 – \$2000



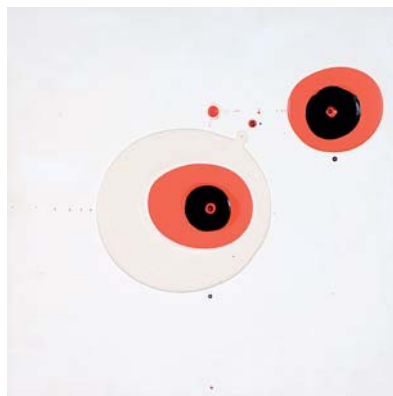
354. Robyn Kahukiwa
Child Hunger/Damaged Potential I
 collage on silkscreen print
 title inscribed, signed and dated 2014
 500 x 610mm
 \$2000 – \$3000



355. Inge Doesburg
Mt Cargill
 monoprint
 title inscribed, signed and dated '97
 560 x 750mm
 \$600 – \$1000



356. Elliot Collins
Montmatre
 watercolour and graphite on paper
 title inscribed, signed and dated 2010 verso
 and inscribed *Painted in Paris*
 300 x 195mm
 \$600 – \$1000



357. Seung Yul Oh
Untitled
 acrylic on board
 signed and dated '05 verso
 3378 x 337mm
 \$1000 – \$2000



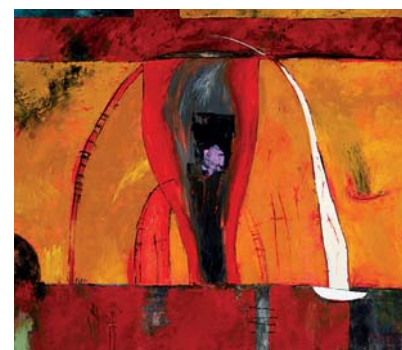
358. Rohan Hartley Mills
Yoko Ono Painting
 acrylic on canvas
 title inscribed, signed and dated 2014 verso
 350 x 300mm
 \$300 – \$600



359. Dean Buchanan
Kowhai
 oil on hessian
 signed and dated '92
 555 x 780mm
 \$800 – \$1200



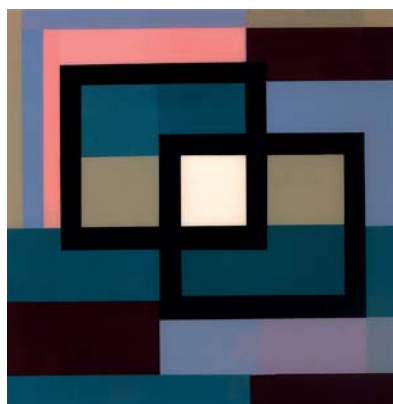
360. Anna Stichbury
November
 oil on canvas
 title inscribed, signed and dated '99
 405 x 300mm
 \$500 – \$800



361. Frith Wilkinson
Untitled - Abstract Composition
 oil on canvas
 signed with artist's initials FW and dated '97
 700 x 800 x 85mm
 \$200 – \$400



362. Anne Riethmaier
Matt and Shine
 acrylic and liquid glass on board, diptych
 title inscribed, signed and dated 2018 verso
 400 x 400mm: each panel; 400 x 800mm:
 overall
 \$600 – \$1000



363. Anne Riethmaier
One Square Meal No1
 acrylic and liquid glass on board
 title inscribed, signed and dated 2019 verso
 450 x 450 x 80mm
 \$500 – \$800



364. Anna Stichbury
Hanoi
 oil and collage on canvas
 title inscribed, signed and dated '99
 405 x 300mm
 \$600 – \$1000



365. Simon Kaan
Whenua Series
 mixed media on paper
 title inscribed, signed
 and dated 2007
 750 x 130mm
 \$800 – \$1200



366. Andrew Drummond
Encased Atmosphere I
 graphite and
 schlagmetal on paper
 1705 x 120 x 65mm
 Provenance:
 Private collection,
 Auckland
 \$1000 – \$2000



367. Dean Buchanan
Untitled – Gulf View
 oil on canvas
 signed and dated 2020
 D. 505mm
 \$1500 – \$2000



368. A. Lois White
Samson and Delilah
 watercolour and graphite
 signed; title inscribed verso, original
 Certificate of authenticity signed by the
 artist's niece Alison Disbrowe affixed verso
 180 x 210mm
 \$4000 – \$6000



369. Elise Mourant
Old House, Auckland
 watercolour
 signed; title inscribed and signed on
 artist's original label affixed verso
 350 x 530mm
 \$300 – \$500



370. Pat Hanly
Escape from Fire
 silkscreen print, 22/30
 title inscribed, signed and dated '84
 500 x 625mm
 \$2000 – \$4000



371. Pat Hanly
Awake Aotearoa, Fire Series
 screenprint, 11/32
 title inscribed, signed and dated '83
 540 x 660mm
 \$2000 – \$4000



372. Megan Jenkinson
Logica Struggling with the Science of Decipherment
 photographic collage
 title inscribed, signed and dated 1986
 180 x 280mm
 \$2500 – \$4500



373. Francis Alys
Untitled from the series Artspace Turns 21
 silkscreen print, edition of 50
 660 x 508mm
 \$400 – \$600



374. Simon Williams
The Bay, St Heliers
 oil on board
 signed; title inscribed verso
 440 x 735mm
 \$1500 – \$2000



375. Artist unknown (after Charles F. Goldie)
Untitled (Erana)
 lithograph with applied paint
 385 x 290mm
 \$500 – \$1000



376. Charles F. Goldie
Tikitere Mihi, A Cheftain of the Ngatienuku
 lithograph
 signed and dated Auckland 1908 on the plate
 337 x 270mm
 \$600 – \$1200

CONDITIONS OF SALE

Please note: it is assumed that all bidders at auction have read and agreed to the conditions described on this page. Art+Object directors are available during the auction viewing to clarify any questions you may have.

1. Registration: Only registered bidders may bid at auction. You are required to complete a bidding card or absentee bidding form prior to the auction giving your correct name, address and telephone contact and supplementary information such as email addresses that you may wish to supply to Art+Object.

2. Bidding: The highest bidder will be the purchaser subject to the auctioneer accepting the winning bid and any vendor's reserve having been reached. The auctioneer has the right to refuse any bid. If this takes place or in the event of a dispute the auctioneer may call for bids at the previous lowest bid and proceed from this point. Bids advance at sums decreed by the auctioneer unless signaled otherwise by the auctioneer. No bids may be retracted. The auctioneer retains the right to bid on behalf of the vendor up to the reserve figure.

3. Reserve: Lots are offered and sold subject to the vendor's reserve price being met.

4. Lots offered and sold as described and viewed: Art+Object makes all attempts to accurately describe and catalogue lots offered for sale. Notwithstanding this neither the vendor nor Art+Object accepts any liability for errors of description or faults and imperfections whether described in writing or verbally. This applies to questions of authenticity and quality of the item. Buyers are deemed to have inspected the item thoroughly and proceed on their own judgment. The act of bidding is agreed by the buyer to be an indication that they are satisfied on all counts regarding condition and authenticity.

5. Buyers premium: The purchaser by bidding acknowledges their acceptance of a buyers premium of 17.5% + GST to be added to the hammer price in the event of a successful sale at auction.

6. Art+Object is an agent for a vendor: A+O has the right to conduct the sale of an item on behalf of a vendor. This may include withdrawing an item from sale for any reason.

7. Payment: Successful bidders are required to make full payment immediately post sale – being either the day of the sale or the following day. If for any reason payment is delayed then a 20% deposit is required immediately and the balance to 100% required within 3 working days of the sale date. We accept payment via Eftpos, cash (under \$5000.00) and direct credit. Visa and MasterCard credit cards are accepted, however a surcharge of 2.5% will be added. Payments over \$10,000.00 must be made by direct credit to our bank account. Our bank details for deposits are 12-3107-0062934-00. Please use your buyer number as transaction reference. Please refer to point 7 of the Conditions of Sale in the catalogue for a detailed description of payment terms.

8. Failure to make payment: If a purchaser fails to make payment as outlined in point 7 above Art+Object may without any advice to the purchaser exercise its right to: a) rescind or stop the sale, b) re offer the lot for sale to an underbidder or at auction. Art+Object reserves the right to pursue the purchaser for any difference in sale proceeds if this course of action is chosen, c) to pursue legal remedy for breach of contract.

9. Collection of goods: Purchased items are to be removed from Art+Object premises immediately after payment or clearance of cheques. Absentee bidders must make provision for the uplifting of purchased items (see instructions on the facing page).

10. Bidders obligations: The act of bidding means all bidders acknowledge that they are personally responsible for payment if they are the successful bidder. This includes all registered absentee or telephone bidders. Bidders acting as an agent for a third party must obtain written authority from Art+Object and provide written instructions from any represented party and their express commitment to pay all funds relating to a successful bid by their nominated agent.

11. Bids under reserve & highest subject bids: When the highest bid is below the vendor's reserve this work may be announced by the auctioneer as sold 'subject to vendor's authority' or some similar phrase. The effect of this announcement is to signify that the highest bidder will be the purchaser at the bid price if the vendor accepts this price. If this highest bid is accepted then the purchaser has entered a contract to purchase the item at the bid price plus any relevant buyers premium.

IMPORTANT ADVICE FOR BUYERS

The following information does not form part of the conditions of sale, however buyers, particularly first time bidders are recommended to read these notes.

A. Bidding at auction: Please ensure your instructions to the auctioneer are clear and easily understood. It is well to understand that during a busy sale with multiple bidders the auctioneer may not be able to see all bids at all times. It is recommended that you raise your bidding number clearly and without hesitation. If your bid is made in error or you have misunderstood the bidding level please advise the auctioneer immediately of your error – prior to the hammer falling. Please note that if you have made a bid and the hammer has fallen and you are the highest bidder you have entered a binding contract to purchase an item at the bid price. New bidders in particular are advised to make themselves known to the sale auctioneer who will assist you with any questions about the conduct of the auction.

B. Absentee bidding: Art+Object welcomes absentee bids once the necessary authority has been completed and lodged with Art+Object. A+O will do all it can to ensure bids are lodged on your behalf but accepts no liability for failure to carry out these bids. See the Absentee bidding form in this catalogue for information on lodging absentee bids. These are accepted up to 2 hours prior to the published auction commencement.

C. Telephone bids: The same conditions apply to telephone bids. It is highly preferable to bid over a landline as the vagaries of cellphone connections may result in disappointment. You will be telephoned prior to your indicated lot arising in the catalogue order. If the phone is engaged or connection impossible the sale will proceed without your bidding. At times during an auction the bidding can be frenetic so you need to be sure you give clear instructions to the person executing your bids. The auctioneer will endeavour to cater to the requirements of phone bidders but cannot wait for a phone bid so your prompt participation is requested.

D. New Zealand dollars: All estimates in this catalogue are in New Zealand dollars. The amount to be paid by successful bidders on the payment date is the New Zealand dollar amount stated on the purchaser invoice. Exchange rate variations are at the risk of the purchaser.

ABSENTEE & PHONE BID FORM

Auction No. 156
New Collectors Art & Applied Arts
8 December 2020 at 5.30pm

This completed and signed form authorises Art+Object to bid on my behalf at the above mentioned auction for the following lots up to prices indicated below. These bids are to be executed at the lowest price levels possible.

I understand that if successful I will purchase the lot or lots at or below the prices listed on this form and the listed buyers premium for this sale (17.5%) and GST on the buyers premium. I warrant also that I have read and understood and agree to comply with the conditions of sale as printed in the catalogue.

Lot no.	Lot Description	Bid maximum in New Zealand dollars (for absentee bids only)
.....
.....
.....
.....
.....
.....
.....

Payment and Delivery: Art+Object will advise me as soon as is practical that I am the successful bidder of the lot or lots described above.

I agree to pay immediately on receipt of this advice. Payment will be by Eftpos, cash (under \$5000.00) or direct credit. I understand that there is a 2.5% surcharge for payment by Visa or MasterCard credit cards. I understand that payments over \$10,000.00 must be made by direct credit to Art+Object's bank account as shown on the invoice.

I will arrange for collection or dispatch of my purchases. If Art+Object is instructed by me to arrange for packing and dispatch of goods I agree to pay any costs incurred by Art+Object. Note: Art+Object requests that these shipping arrangements are made prior to the auction date to ensure prompt delivery processing.

Please indicate as appropriate by ticking the box:

☐ PHONE BID

☐ ABSENTEE BID

FIRST NAME:

SURNAME:

ADDRESS:

HOME PHONE:

MOBILE:

BUS. PHONE:

EMAIL:

Signed as agreed:

.....

To register for Absentee or Phone Bidding this form must be lodged with Art+Object by 2pm on the day of the published sale time in one of three ways:

1. Email a printed, signed and scanned form to Art+Object: info@artandobject.co.nz
2. Fax a completed form to Art+Object: +64 9 354 4645
3. Post a form to Art+Object, PO Box 68345 Wellesley Street, Auckland 1141, New Zealand

08.12.20



ART+OBJECT