

THE 21<sup>st</sup> CENTURY AUCTION HOUSE

# ART + OBJECT

## **New Collectors Art**

Thursday 24 June 2010

## **Napoleon's Final Days**

Tuesday 29 June 2010

## **Tribal Arts & Objects**

Tuesday 29 June 2010





# New Collectors Art

**Auction Thursday 24 June at 6.30pm**

Page 7

# Napoleon's Final Days

**Auction Tuesday 29 June at 6.00pm NZ time**

Page 39

# Tribal Arts & Objects

**Auction Tuesday 29 June at 7.15pm**

Page 59

## **ART + OBJECT**

3 Abbey Street, Newton, Auckland  
PO Box 68 345, Newton, Auckland 1145

Telephone: +64 9 354 4646

Freephone: 0 800 80 60 01

Facsimile: +64 9 354 4645

[info@artandobject.co.nz](mailto:info@artandobject.co.nz)

[www.artandobject.co.nz](http://www.artandobject.co.nz)

Cover image:

Detail of Lot 17, Napoleon's Final Days catalogue

[Napoleon the 1st at St.Helena taken from the Ibbetson original](#)

**Welcome** to ART+OBJECT's June 2010 catalogue which consists of three individual auctions from June 24 to June 29.

Undoubtedly the highlight is Napoleon's Final Days, a collection of international importance with provenance directly to the island of St. Helena in the early 19th century. This collection has been carefully cared for by the descendants of St. Helena Commissary officer Denzil Ibbetson for nearly 200 years and a large measure of thanks from must go to the family from all Napoleonic scholars and collectors around the globe. Thanks must also go to the President of the International Napoleonic Society, J. David Markham whose enthusiasm for and assistance with the catalogue has been invaluable. David has also written an illuminating essay on Napoleon and the moment in history that led to his exile on St. Helena which can be found in the introduction to the Napoleon's Final Days catalogue on page 40. The collection is being offered as individual lots however enquiry is encouraged from parties seeking to acquire the collection as a complete archive.

This catalogue reveals the broad range of genres that A+O provides for collectors and the New Collectors section – has many interesting artworks, in particular a fine suite of Raymond Ching works on paper from the 1960s (lots 85-89) and a selection of works by contemporary artist Jason Greig, whose distinctive work is currently being exhibited at the Sydney Biennale.

Our final auction in this catalogue is Tribal Art and Objects which juxtaposes traditional ethnographic, folk and applied arts with modern design and ceramics. This catalogue reveals that the communicative power of handmade objects transcends cultures. Highlights in this section are numerous and include a delightful grouping of New Zealand Pounamu (Jade) pendants and brooches (lots 146-189), the most impressive Kauri Gum bust (lot 134) seen for many years and a high quality selection of Oceanic, African and New Zealand artefacts.

The Object section includes superb ceramics by leading New Zealand practitioners such as Len Castle and a contemporary classic in the elegant form of New Zealand designer David Trubridge's Glide Recliner (lot 234)

Finally an important note for International bidders, please read ART+OBJECT's conditions of sale on page 78 before registering to bid.

International bidders should also note that the Napoleon's Final Years catalogue is also available for bidding at [www.artfact.com](http://www.artfact.com) as well as live at A+O's Auckland Rooms on June 29.



My business is all about the future.

I'm always thinking about what's going to be right for tomorrow. And that's why I like to surround myself with other forward-thinking brands. The Lexus RX450h, the only luxury hybrid SUV on the market, allows me to travel between my home and design room in style and comfort, without giving up the earth for it.

*Karen Walker*

 **LEXUS**  
THE PURSUIT OF PERFECTION



# Important Paintings and Contemporary Art

29 July 2010  
Entries invited

**Gordon Walters**

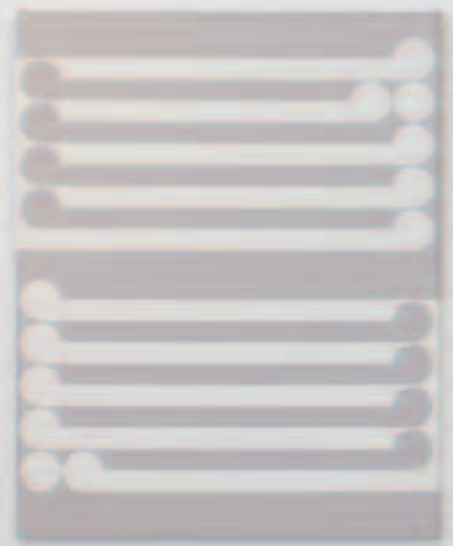
Tirangi II  
PVA and acrylic on canvas, 1979  
1012 x 811mm  
\$200 000 – \$300 000

**Richard Killeen**

Island Mentality No. 4  
alkyd on 22 aluminium cut-outs, 1981  
1800 x 2350mm: installation size variable  
\$38 000 – \$48 000

**Ralph Hotere**

Black Painting  
acrylic on canvas, 1969.  
915 x 1015mm  
\$90 000 – \$130 000





# Highlights from A+O's May 18 Important Photographs Sale

Figures include buyer's premium



Fiona Pardington  
The Quai Branly Suite of Nine Hei Tiki  
2430 x 2025mm installation size  
realised \$64 278



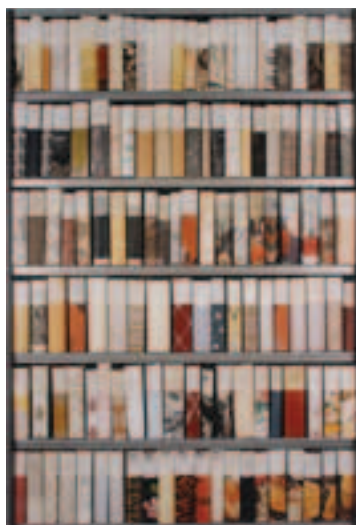
Fiona Pardington  
Ake Ake Huia  
1210 x 930mm  
realised \$30 387



Michael Parekowhai  
Amiens  
1500 x 1200mm  
realised \$13 440



Yvonne Todd  
Goat Sluice  
1300 x 1020mm  
realised \$9350



Ann Shelton  
Frederick B. Butler Collection No.17  
1365 x 965mm  
realised \$6545



Ans Westra  
Untitled  
305 x 298mm  
realised \$5961



# Tribal Arts & Objects

**Auction Tuesday 29 June at 7.15pm approximately**  
**– immediately after Napoleon’s Final Days Catalogue**  
3 Abbey Street, Newton, Auckland

## Viewing

Saturday 19 June	11am – 4pm
Sunday 20 June	11am – 4pm
Monday 21 June	9am – 5pm
Tuesday 22 June	9am – 5pm
Wednesday 23 June	9am – 5pm
Thursday 24 June	9am – 5pm
Friday 25 June	9am – 5pm
Saturday 26 June	12noon – 3pm
Sunday 27 June	12 noon – 3pm
Monday 28 June	9am – 5pm
Tuesday 29 June	9am – 1pm

100. A 19th century Fijian throwing club, ula with rootwood head and incised decoration to the grip. L. 380mm. \$300 – \$400
101. A Fiji Islands kava bowl, tanoa of circular concave form supported on four tapering legs. D. 480mm. \$350 – \$500
102. A pair of 19th century Fijian mother of pearl shells carved with portrait medallions of Fijian women. Collected by William Ruthe Captain of the Helen Denny and historically the owner of Rotorua Island. D. 110mm \$200 – \$300
103. A good 19th century ironwood Fijian totokia [beaked battle hammer] Provenance: From the collection of Phillip Samuel Solomon, barrister of Fiji who died in 1895. This club collected in the mid 19th century. L. 1850mm. \$2500 – \$3500
104. A Samoan kava bowl, tanoa of circular concave form supported on six tapering legs. D. 560mm. \$500 – \$800
105. A good 18th-19th century Vanuatu Erromango island war club of large proportions with flanged head with multiple protrusions held on a tapering cylindrical shaft, the grip terminal with a stylised frangipani design. L. 1260mm \$2000 – \$4000
106. A rare early 19th Malakula Vanuatu war club. The slender cylindrical shaft with four carved protrusions beneath a flanged head with rich reddish brown patina. Complete with original sennit cord shoulder hoist. L. 980mm \$3500 – \$5000
107. A 19th century Fijian head rest, Kali, carved from a single piece of hardwood, pierced to the centre. W. 320mm. \$2500 – \$3500
108. A rare early 19th century Astral Islands paddle, Ra'lvavae carved of tamanu wood with unusually long shaft tapering to the grip section carved with a frieze of stylised tiki heads. Finely incised with geometric patterns. Some damage to the figures at the terminal end. L. 1690mm. \$8000 – \$12000
109. A New Britain mace club, the ovoid stone head held on a slender reddish brown tapering shaft L. 1280mm \$600 – \$800
110. A Fine Aboriginal boomerang. Traditional non symmetrical form with painted pigment decoration. L. 900mm \$250 – \$400
111. An Aboriginal boomerang. Traditional form with incised decoration depicting emu, kangaroo and birds. L. 780mm \$200 – \$300
112. A pair of Pitcairn Island souvenir cups carved by Tommy Warren. \$150 – \$250
113. A 19th Fijian totokia (beaked battle hammer) damaged to the head section \$250-350
114. A Papua New Guinea tapa cloth. 1100 x 800mm \$200 – \$300
115. Old Fijian tapa cloth section with stencilled decoration. 550 x 2500mm \$250 – \$350
116. A Solomon Islands club with leaf shaped blade with medial ridge. L. 1160mm \$400 – \$800
117. A Samoan Paddle club together with another paddle \$400 – \$600
118. A Samoan paddle shaped club with sennit wrapping to the grip section. L. 780mm \$200 – \$300
119. Old Tongan tapa cloth decorated with a field of 36 panels with triangular forms. 1350 x 1860mm \$250 – \$350
120. Old Tahitian tapa cloth section cased in a contemporary glazed frame. 1650 x 550mm \$250 – \$400



103



105

105



108

109



106

121. A rare carved Tibetan skull. Densely carved with a central deity figure of Yamantaka (the defeater of death) the multi headed deity stands holding a skull cup and chopping knife wearing a skull garland symbolic of the emptiness of all inherent existence, holding a skull mace, a noose, a phurba ( ritual dagger) and other tantric implements in his six hands flanked by a carved skeleton representing the Lord of the charnel ground and a Garuda figure devouring a serpent representing the clearing of all obstacles and diseases. The back section carved with a stupa flanked by a wrathful Mahakala protector deity and a further Garuda figure. The jaw section carved with Tibetan script and with mantra script carved across the surface. Skulls of this type were traditionally used by Tibetan Buddhist practitioners as a graphic reminder of impermanence and the transitory nature of human existence. The carving of Yamantaka to the upper section symbolises the transcendence of the death through the various practices associated with Tibetan Vajrayana Buddhism. \$3500 – \$5000
122. A large Papua New Guinea Sepik river region totem pole carved with two figures surmounted by a frigate bird with painted pigment decoration. H.2000mm \$1000 – \$2000
123. A muka kete with tassel attachments Y registration pending. \$300 – \$400
124. A finely woven muka kete fringed around three sides, 2 ply muka handles attached. Y12959. \$250 – \$350
125. A small muka kete \$200 – \$300
126. An unusual 1930's hand woven taniko pattern kete bound with leather trim. \$400 – \$600
127. A 19th century Toki kakauroa [long handled tomahawk] The shaft carved with a manaia to the central section with a further manaia head with open mouth holding the trade metal axe head. 1060 x 105mm Y registration pending \$5000 – \$8000
128. A late 19th century koruru surmounted by a tekoteko figure holding a patu. l. 820. Registration Y 3863. \$6000 – \$8000
129. A late 19th century pare (door lintel) red ochre painted and carved with three weku heads and whakarare decoration above a frieze inset with paua discs .Y 1466. \$1000 – \$2000
130. A good and unusual Ngati Tarawhai carved standard lamp. Ebonised, with three whakawae-type figures with weku form heads carved in high relief encircling the stem issuing from a stepped circular base. Each figure with paua shell eyes framed by restrained whakarare carved detail. Complete with original Kowhaiwhai pattern shade. Circa 1920. H.1280mm \$2500 – \$4000

131. An ebonised Maori arts and crafts period desk. The top carved with a central weku head flanked by manaia figures, the frieze with four drawers with carved weku fascias and brass handles by Anton Teutenberg each cast with a portrait medallion of King Tawhiao. W. 1200mm. \$2500 – \$3500
132. A Rotorua Ngati Tarawhai wall mirror, the ebonised frame carved with manaia, tiki figures and weku heads each with inset paua shell eyes. L.1140 W. 520mm. \$2,500 – \$3,500
133. No lot
134. A rare and impressive kauri gum portrait bust of Tukaroto Matutaera Potatau Te Wherowhero Tawhiao, the second Maori King. 350 x 200mm. \$8000 – \$12000
135. An early 20th century Rotorua Ngati Tarawhai Tokotoko surmounted by a relief carved stylised human figure with ta moko and hands placed to his abdomen, above a carved central manaia figure with a further whakawae-type figure to the lower section. Each figure separated by rauponga carved detail. h. 970mm Y registration pending \$1600 – \$2400.
136. A tokotoko decorated with rauponga carving and with an incipient mask to the upper section. Y registration Y13871. \$500 – \$800



121



128



127

135



137. A Wahaika attributed to Herbert Heberley carved with a figure with inset paua shell eyes decorated with rauru spirals to the shoulder and buttocks. The blade decorated with whakarare carved detail and with further rauru carving to the grip section. L.460mm \$2000 – \$3000

138. A late 19th century pou whaikairo (Carved figure) with protruding tongue and hands to abdomen and with paua shell eyes, decorated with maui and takarangi spirals. Y registration 13996. H.520mm. \$500 – \$800

139. An early 20th century Rotorua Maori School of Arts postal box carved in the form of a whare whaikairo complete with carved Poupou to the sides. The front fully carved with a Koruru centring maihi boards held on amo supports and with carved pare and whakawae framing the door and window. L.530mm \$1500 – \$2000

140. A New Zealand Arts and craft Maori art hammer finished pewter tray. The handles made in the form of weku heads with applied metal work eyes inset with paua shell discs framed by pierced kowhaiwhai designs. W.620mm

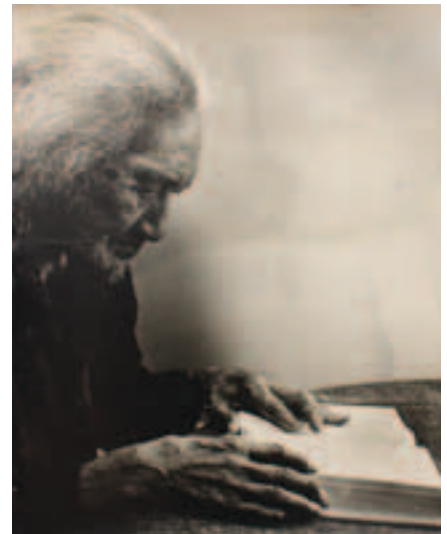
141. A decorative folk art table lamp, black painted plaster cast in the form of a weku head raised on a circular base. H.500mm \$500 – \$800

142. Allan Baldwin  
A portrait of an elderly Maori lady with ta moko  
Vintage gelatin vintage portrait photograph.  
500 x 390mm.  
\$800 – \$1200

143. Allan Baldwin  
A portrait of an elderly Maori lady reading a Maori Bible Ko Te Paipera Tapu.  
Vintage Silver gelatin portrait photograph.  
500 x 390mm.  
\$800 – \$1200

144. Portrait of Tukaroto Matutaera Potatau Te Wherowhero Tawhiao, the second Maori King by Josiah Martin circa 1880, superb early gelatin silver strike of this print framed in an Ngati Tarawhai carved frame decorated with weku, manaia and tiki figures. 350 x 300mm. \$2000 – \$3000.

145. Frank Davis  
Te Kooti Inspires his warriors.  
Acrylic on board 1380 x 900mm.  
\$2500 – \$3500



143



139



137



- |   |   |   |
|---|---|---|
| <p>146. Pounamu pendant with gold mount and ring.<br/>\$80 – \$120</p> <p>147. Pounamu kuru pendant with gold mount.<br/>\$80 – \$120</p> <p>148. Pounamu pendant with engraved gold mount<br/>\$80 – \$ 120</p> <p>149. Pounamu pendant with worn gold mount.<br/>\$60 – \$100</p> <p>150. Tangiwai (bowenite) kuru with worn 9ct gold mount<br/>\$125 – 150</p> <p>151. Pounamu kuru pendant with gold mount and ring.<br/>\$80 – \$120</p> <p>152. Bowenite kuru pendant with 9ct gold mounts<br/>\$200 – \$250</p> <p>153. Pounamu pendant with 9ct gold mount and ring.<br/>\$50 – \$80</p> <p>154. Pounamu pendant with engraved gold mount<br/>\$125 – \$150</p> <p>155. Pounamu pendant with gold mounts.<br/>\$80 – \$120</p> <p>156. Pounamu pendant with gold mount and filigree edge.<br/>\$80 – \$120</p> <p>157. Pounamu pendant tear drop shape with gold mount.<br/>\$180 – \$240</p> <p>158. A large pounamu pendant with engraved 9ct gold mounts<br/>\$125 – \$150</p> <p>159. Pounamu pendant with engraved gold mount.<br/>\$80 – \$120</p> <p>160. Pounamu kapeu pendant with gold mount and ring.<br/>\$60 – \$100</p> <p>161. Pounamu kapeu pendant with gold mount.<br/>\$75 – \$125</p> <p>162. Pounamu mako tooth shaped pendant with gold engraved mount.<br/>\$125 – \$175</p> <p>163. Pounamu hei manawa (heart shaped) pendant with gold “Kia Ora” mount<br/>\$300 – \$400</p> <p>164. Pounamu hei manawa (heart shaped) pendant with 9ct gold “NZ” mount in interlaced letters<br/>\$300 – \$400</p> <p>165. Pounamu hei manawa (heart shaped) pendant with gold ring and “Aroha”<br/>\$250 – \$250</p> <p>166. Pounamu hei manawa (heart shaped) pendant with gold mount, ring and “Kia Ora”<br/>\$180 – \$240</p> | <p>167. A small pounamu hei manawa (heart shaped) pendant with gold Kia Ora mount<br/>\$100 – \$150</p> <p>168. Pounamu hei manawa heart with gold fern mount<br/>\$150 – \$200</p> <p>169. Small pounamu hei manawa (heart shaped) with gold “NZ” mount.<br/>\$150 – \$200</p> <p>170. A large pounamu hei manawa (heart shaped) pendant.<br/>\$600 – \$800</p> <p>171. No lot</p> <p>172. An unusual pounamu kuru pendant with incised Polynesian figure possibly used as a seal .<br/>\$150 – \$200</p> <p>173. Pounamu kuru pendant with silver mount and ring<br/>\$125 – \$175</p> <p>174. Pounamu pendant with silver mount and ring<br/>\$80 – \$120</p> <p>175. Pounamu kuru pendant with attached silver chain, a sixpence coin and another coin commemorating the Industrial Exhibition in Auckland 1898-99<br/>\$200 – \$300</p> <p>176. Pounamu tear drop shape pendant with plain silver mount and ring<br/>\$150 – \$250</p> <p>177. Pounamu pendant with silver NZ and fern mount<br/>\$80 – \$120</p> <p>178. Pounamu pendant with a vacant silver cartouche mount<br/>\$75 – \$125</p> <p>179. Pounamu kuru pendant with plain silver mount and ring<br/>\$100 – \$150</p> <p>180. Pounamu mako tooth shaped pendant with silver mount and ring.<br/>\$60 – \$100</p> <p>181. Pounamu mako tooth shaped pendant with 9ct gold mount.<br/>\$100 – \$150</p> <p>182. Pounamu mako tooth shaped pendant with gold mount and ring<br/>\$150 – \$200</p> <p>183. Pounamu pendant square, with a gold rings and belt shaped collar.<br/>\$80 – \$120</p> <p>184. Pounamu pendant, Maltese cross shaped with gold ring, and vacant cartouche.<br/>\$80 – \$120</p> <p>185. Pounamu pendant, circular shape with gold rings and NZ within a shield.<br/>\$80 – \$120</p> <p>186. Pounamu “swastika” pendant with gold mount and ring.<br/>\$50 – \$80</p> | <p>187. Pounamu bar brooch, inanga variety with NZ cut into the gold mounts.<br/>\$150 – \$250</p> <p>188. Pounamu bar brooch with gold NZ mounts framed by engraved gold ends.<br/>\$150 – \$250</p> <p>189. Pounamu hei manawa (heart shape) pendant with gold heart and fern mount<br/>\$100 – \$150</p> |
|---|---|---|

163



166



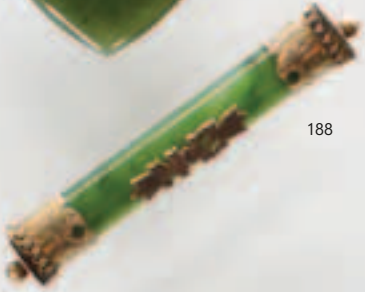
165



187



188



170



158

175



185



166



168



177



164



162



169



190. Contact period pounamu hei tiki, tangiwai variety (Bowenite) modelled with head slightly angled with chin to left. Red wax inset eyes and hands to thighs. Countersunk hole piercing the forehead with metal suspension ring. H. 105 w. 59mm. Registration Y 13257. \$4000 – \$6000
191. A large pounamu kuru pendant. L. 100mm. Registration Y 14149. \$150 – \$250
192. A contemporary pounamu kawakawa clock pin by Mike Higgs \$200 – \$300
193. A Folk art waka, ebonised finish with a weku head carved to the tauihu (prow). The Taurapa (Sternpost) absent. L.800mm \$500 – \$800
194. A cast bronze model of a Maori warrior. H.330mm \$150 – \$200
195. A carved tobacco box, the lid carved with manaia heads and the sides with raru spirals \$100 – \$200
196. A folk art desk stand with central glass inkwell with carved weku head lid flanked by weku heads with inset paua shell eyes. L. 220mm. \$100 – \$200
197. A greywacke toki adze. Y 13568 together with a argillite adze, Y 13300. \$50 – \$100
198. Wiremu Kutuheri carved kiwi inkwell. \$50 – \$100
199. Wiremu Kutuheri pair of carved kiwi each surmounting a kauri log. \$200 – \$300
200. Wiremu Kutuheri NZ kauri folk art clock surmounted by a Kiwi \$150 – \$250
201. A 1950's Rosly manatunga wool blanket in a stylised interwoven pattern in red, white, black and yellow with original label. \$250 – \$400
202. A Gilbert Small folk ebonised folk art casket, surmounted by a figure carved in high relief with a snake entwining his body, the front and back panels carved with weku forms. Inscribed to the base Carved by G. Small 1941 \$500 – \$700
203. A Gilbert Small commemorative totem dated 1940. The upper section carved with figures of Adam and Eve in the Garden of Eden and with further carved panels commemorating aspects of New Zealand history including the signing of the treaty of Waitangi in 1840. H.440mm \$300 – \$500
204. A large polished piece of Kauri gum. \$350 – \$500
205. Folk art Maori figure carved naturalistically as a human figure inset with paua shell eyes and with ta moko and decorated with raru spirals and rauponga carved detail to the body. H.100. \$200 – \$300
206. A carved weku head post terminal with inset shell eyes. H. 480mm. \$350 – \$500
207. A Gourd carved with kowhaiwhai designs \$300 – \$500
208. Early 20th century New Zealand folk art Punga vase. H.160mm \$100 – \$200
209. New Zealand Kauri Masonic members voting box. \$150 – \$250
210. A folk art stoneware sheep figure.W.100mm \$100 – \$200
211. A rare early 20th century tourist art plate made in Germany, chromolithographed with a central medallion depicting Guide Sophia from an Arthur Iles photograph and with various other scenes of Rotorua. Inscribed to the rim Published for Iles Rotorua by George Hadfield, Wellington. \$400 – \$500
212. A Kauri document box painted with hei-tiki, ferns, weku heads and various other New Zealand motifs \$400 – \$500



191



217

214

215

## AFRICAN ART

213. An Eastern Congo Songe mask, An early 20th century example with symbolic Union Jack decoration incorporated into the facial features, traditionally used in dance rites for battle or other significant events. L. 580mm. \$800 – \$1200
214. A Good Tchokwe pwo mask with oval face with open pierced mouth baring teeth, beneath oval eyes and with scarification to the forehead cheeks and chin wearing a vegetal-fibre net embellished with beads. H.410mm  
Provenance: Private collection New York  
\$2000 – \$3000
215. A Good Fang mask with an oval facial plane and with protruding mouth and aquiline nose framed by close set pierced eyes and expressive arching brows, covered in a layer of Kaolin. H.580mm  
Provenance: Private collection New York.  
\$2000 – \$3000
216. A Luluwa Masque Nyanga mask with pointed chin and pierced rectangular mouth below pieced almond shaped eyes. Fine reddish brown patina. H.360mm  
Provenance: Private collection New York  
\$1000 – \$2000
217. Classical Luba Kifwebe mask of abstract orthodox form with pieced mouth and slit like almond shaped eyes pierced around the rim for attachment, the whole decorated with linear striations encrusted with white pigment and with patina of age. H.490mm  
Provenance: Private collection New York  
\$1500 – \$2500

218. A Tanzania Haya mask with pierced oval mouth below a broad nose framed by pierced oval eyes with vertical scarification to the cheeks. H.330m  
Provenance: Private collection New York  
\$800 – \$1200
219. A Nigerian West African Yaruba mask  
\$250 – \$350
220. A Mokonde blackwood carving with multiple conjoined figures. H.170mm  
\$50 – \$100



213



221. Ashante chiefs stool (Ghana). 19th century carved hardwood with curved pierced plank-like seat raised on a central pieced support and held on four further supports from a rectangular base. 270 x 450 x 225mm. Exhibited Afrikanische sitze [African seats] Vitra design museum, Weil am Rhein, 1994 & Musee des arts Africains et Oceaniens, Paris.  
\$2500 – \$3500

222. A rare early 19th century Nigerian head crest mask with skin covering and monkey teeth and with three ribbed protruding horns, mounted on a later pole support. H. 560mm.  
\$500 – \$1000

223. A Bambara antelope *tjiwara* headdress of horizontal form with bent legs. The head attached at the top by wooden pegs, the faceted snout leading to long backswept ears and spiraled horns. Mounted on a fitted base on a perspex stand. L.330mm. H.270mm  
\$800 – \$1200

223A. An Impressive Baga Nimba Female shoulder mask with slender neck leading to the oval head with protruding chin and nose and with striated back swept coiffure. The entire mask pierced with multiple metal pins. Raised on a plinth base. H.900mm W.600mm.  
Shoulder masks of this type were typically used during joyful ceremonies such as weddings and harvest feasts  
\$1500 – \$2500

224. A Dogon bronze antelope figure with stylised face and engraved spiral decoration to the body together with a Dogon equestrian figure. L.360mm  
\$200 – \$300

225. A Luba headrest issuing from two carved supports in the form of male and female figures seated facing each other on a rectangular base. W.200mm  
\$500 – \$800

226. A Decorative African hardwood stool with plank form top raised on tapering cylindrical legs. W.580mm  
\$1500 – \$2000

227. An Angolian Gong mounted on tusks with sterling silver mounts and inscribed Angola 1898 from J.J.W to J.G.S 10-1-12. W.470 H.380mm  
\$3000 – \$4000

228. A Cameroon ivory bracelet  
\$350 – \$500

229. An African mask with pierced circular eyes, pierced to the rim for attachment and with separately attached lower jaw section. H.240mm  
\$300 – \$500

230. A Papua New Guinea totem ancestral clan figure with basket weave body. H.300mm  
\$150 – \$250

231. A pair of African Ibeji Figures, the male and female figures each standing on a circular base with bulging eyes and scarification to the checks wearing upswept blue indigo coiffure. H.250mm  
\$1400 – \$2000

231A. A pair of Indonesian paper puppets  
\$150 – \$250







## DECORATIVE ARTS AND DESIGN

232. Charles Rennie Macintosh Willow Chair with curved lattice back and ebonised ash frame  
Original design 1902 – 1904.  
\$2000 – \$3000
233. A good Danish Arne Vodder designed 1960's rosewood sideboard with sliding doors raised on square section legs.  
W. 1980mm H.830mm  
\$3000 – \$5000
234. David Trubridge  
Glide Recliner  
Laminated solid Ash  
Prototype first example made in 2002.  
Glide Recliner was critiqued as David Trubridge's best design by Alexander Von Vegesack, the director of the Vitra design museum. This chair has featured in a number of international design books and magazines including a solo appearance on the cover page of the 'Eco Design Sourcebook' by eco designer Alastaire Fuad-Luke.  
Exhibited: 2004 Urban Art house in Parnell. 2005 Fashion week From N to Z – Design against Mainstream.  
2200 x 790 mm  
\$5000 – \$7000
235. David Trubridge Side table, wych elm with stainless steel screwed and plugged joints  
\$400 – \$800

236. Gregory Smith Clear chair. Prototype edition, 1 of 2, 2009.  
\$4000 – \$5000.
237. Garth Chester bent plywood Curvesse chair. A unique early example made from a single sheet of laminate without the feet seen on other examples of this chair.  
Garth Chester's Curvesse chair (1944), a cantilevered armchair extracted from a single sheet of plywood, was both avant garde and a world first. Its conception had previously eluded internationally renowned designers such as Alvar Alto, Gerald Summers and Marcel Breuer  
The 'S' chair, as it is also affectionately known by collectors, is a New Zealand modernist design icon. It was originally patented by Chester with several design variations, most of which were either not produced or have not been rediscovered. It is a perfect minimal design that exploits and expresses the technical properties of a flowing sheet of plywood, without need for upholstery or indeed feet in this unique variant.  
\$5000 – \$8000
238. A pair of New Zealand armchairs attributed to Garth Chester with native timber laminated frames with upholstered bent ply seat and back. Note: Concealed bolt affixing the seat and back as seen exposed on the Winters Salon furniture.  
\$2000 – \$3000
239. A rare John Crichton black painted steel framed coffee table with inlaid mosaic top.  
L.1027mm x 660mm  
\$2000 – \$4000
240. A John Crichton rewarewa standard lamp with tapa shade. H.2000mm  
\$1000 – \$2000





241

241. An American 1950s sideboard with central fall front shelf opening to reveal a fitted interior above two drawers flanked by panelled cupboards with parquetry decoration raised on a platform base. 1800 x 1250. \$2000 – \$3000
242. A Fred Lowan designed bent ply cantilevered armchair with leather upholstery and matching footstool. \$1000 – \$2000
243. A good pair of vintage Charles Eames for Herman Millar aluminium group lounge chairs with soft pad black leather seats. \$4000 – \$6000
244. A set of eight Fritz Hansen style ant chairs with black laminate seats raised on chromium plated legs. \$400 – \$600
245. A 1950s Scandinavian rocking chair with tan leather seat and padded back in the style of Bruno Mattsson \$650 – \$800
246. A 1950s red lacquer partner's desk with black vitrolite glass writing surface \$600 – \$1000
247. A good Art Deco period Zebra wood dining table and eight chairs with leather seats \$2500 – \$3500
248. A 1960s Vintage vulcanised rubber floor standing model of a cactus. H.1650mm \$350 – \$500
249. B&B Italia laminate coffee table 800 x800mm \$350 – \$500
250. Keith Murray Wedgwood black basalt vase shape 3816 with banding to the upper section. H.210mm. \$2000 – \$3000
251. A very rare Keith Murray Wedgwood brown basalt vase of tapering conical shape (a variant on shape 3868) with concentric incised bands. Script signature and factory marks to the base. H.180mm \$4000 – \$6000



243



250 &amp; 251

252. Keith Murray Wedgwood moonstone pedestal bowl. Shape 3806. D. 210mm. \$250 – \$300
253. Keith Murray Wedgwood moonstone cylindrical vase. H. 250mm \$200 – \$300
254. Gio Ponti Salir glassworks (Ars Studio Labour Industrie Riunite) clear glass vase raised on a yellow tinted conical spreading foot, deeply etched with an equestrian Diana the Huntress who raises her spear in salute in both hands above her head as her hound bounds before her stead. Signed S.A.L.I.R Gio Ponti. H.400mm \$3000 – \$4000
255. Clyne Farquharson glass pedestal bowl hand cut with a repeating leaf pattern. D.300mm \$600 – \$800
256. Clyne Farquharson glass vase hand cut with a trailing leaf design. H.250mm \$800 – \$1200
257. William Moorcroft ovoid pansy pattern pottery vase. H. 235mm \$ 750 – \$1100
258. Moorcroft ovoid hibiscus pattern pottery vase. H. 205mm \$350 – \$500
259. Moorcroft studio pottery, powder blue ovoid vase. Unusual impressed Moorcroft Burslem mark. H. 300mm \$1000 – \$1500
260. A Clarice Cliff Bizarre vase of castellated shape decorated in the secrets pattern. H.200mm \$1000 – \$2000
261. A modern Moorcroft jug with tubelined kowhai pattern. H. 235mm \$400 – \$600
262. Poole shape 690 vase in YFI trailing leaf pattern designed by Alfred Read 1953-54. H.240mm. \$400 – \$600
263. Poole shape 690 vase in YFC trailing leaf pattern designed by Alfred Read 1953-54. H.240mm. \$400 – \$600
264. Poole shape 690 vase in YFC trailing leaf pattern designed by Alfred Read 1953-54. H.240mm. \$400 – \$600
265. Poole shape 989 vase in YHP vertical leaf pattern designed by Alfred Read 1953-54. H.240mm. \$350 – \$500
266. Poole bowl decorated with stylised floral motifs. W.250mm \$100 – \$200
267. John Skeaping for Wedgwood moonstone model of a Doe. W.170mm \$400 – \$600
268. An Emile Galle cameo glass vase autumnal coloured acid etched with grape and leaf decoration. Signed and with original paper label affixed to the base Etablts Galle Nancy Paris. H.150mm \$3500 – \$4500
269. Johannes Hedegaard for Royal Copenhagen. Bust of a young women wearing a head scarf. H.430mm \$500 – \$800.
270. A vintage screenprinted poster for the Finnish pavilion at the 1958 Brussels world fair by Herbert W. Kapitzki. 590 x 845mm \$400 – \$800
271. A Regency period library table raised on a trestle from base terminating in lions paw feet \$2000 – \$3000





272. An impressive porcelain charger in the Sevres manner painted with a gentleman attending two ladies in a forest glade. Interlacing mark to the base and with painters mark. Given the size of this piece it was probably historically the inset centrepiece of a Gueridon table D.500mm \$3000 – \$4000
273. An early 20th century figural lamp. Polychrome painted wood and plaster modelled as young women holding a bunch of grapes and a wine cup beneath a vine canopy with coloured bunches of illuminated glass grapes. Raised on a naturalistically modelled base. H.1980mm \$4000 – \$6000
274. A Good Georgian sterling silver fine funnel London 1805 by John Emes \$1000 – \$1500
275. A pair of sterling silver candlesticks in the Adams style. The nozzles modelled as classical urns rased on tapering square section columns moulded with rams heads and swags issuing from square bases with urn motif decoration. London 1891 by Martin Hall and Co. H.300mm \$800 – \$1200
276. A 19th century glass claret jug with sterling silver mounts. Sheffield 1872 by Walter and George Sissons \$350 – \$500
277. A pair of large 19th century apothecary bottles with spire form stoppers. H. 630mm. \$1000 – \$1500
278. A 19th century glass apothecary pharmacy bottle 'Liquid Arsenic' \$30 – \$50
279. A Victorian cast concrete British lap dog with later painting of a Union jack to the body W.420mm \$500 – \$800
280. A Kingsbury toys tin plate fire truck. \$400 – \$600
281. Structo Pressed Steel Roadster in maroon and black. Deluxe Constnction Outfit No.12 circa 1920s.Triple Spring wind up motor and cut steel gears in working order Length 410mm \$1000 – \$1500



273



272



281



## ASIAN ART

282. A 15th Century Si Satchanalai Kendi with large bulbous spout and incised floral decoration. H. 230mm  
\$300 – \$500
283. A 15th century Mataban Kendi ochre glazed with incised floral decoration. H. 280mm  
\$300 – \$500
284. A 16th century Cambodian vase moulded in the form of a bird with ring eyes and lie de vin drizzle glaze with terracotta body. H.100mm  
\$200 – \$300
285. A 15th century Sukhothai celadon glazed vase of ovoid shape with cylindrical neck incised with concentric bands. H. 230mm.  
\$200 – \$300
286. A Good pair of 19th century ancestor portrait scrolls. Painted with a portrait of a civil official of the 8th rank and his wife each wearing a chaofu with rank badge depicting a quail. 480 x 330mm  
\$250 – \$500
287. A collection of Eleven Chinese watercolour portraits on rice paper bound in a album, the front page inscribed Canton June 4th 1914.  
\$100 – \$200
288. A Chinese 19th Boxer Rebellion sword with horn hilt, the blade issuing from a cast bronze dragons head. L.720mm  
\$500 – \$800
289. A Chinese stoneware ewer vase with avian spout with blue splash glaze on a tenmoku ground in the Tang dynasty manner. H.260mm.  
\$350 – \$500
290. A Chinese stoneware vase of bottle form, twin handled terminating in dragon heads to the top rim. Blue splash glaze on a tenmoku ground in the Tang dynasty manner. H.280mm.  
\$350 – \$450
291. A Chinese stoneware vase with lug handles with blue splash glaze on a mustard coloured ground in the Tang dynasty manner. H.270mm  
\$350-450
292. A Chinese bowl with blue splash glaze on a persimmon ground in the Tang dynasty manner. D.170mm  
\$200 – \$300
293. A Han dynasty style pottery figure of a man and lady each modelled in a crouching position  
H.330mm  
\$700 – \$1000
294. A Chinese stoneware vase with ribbed design and black glaze in the Jin dynasty manner. H.160mm  
\$250 – \$300
295. A Chinese Ching dynasty carved stone Buddha's head mounted in a fitted ebonised plinth. H.220mm  
\$1500 – \$2500
296. A decorative wall mirror with leather frame with chinoiserie decoration .1060 x 620mm  
\$350 – \$500
297. A Chinese Neolithic jade axe handle  
\$200 – \$300
298. A Chinese agate burial offering adze  
\$100 – \$200
299. A Chinese jade Neolithic axe head  
\$200 – \$300
- Collection of Japanese Ukiyo-e Bijin-ga woodblock reprints from the collection of Robert O. Muller. Printed from woodblocks in the early 20th century and purchased by Muller in the 1930's**
300. Utamaro Ukiyo-e Portrait of a Bijin [beautiful woman] 390 x 270mm  
\$200 – \$300
301. Utamaro Ukiyo-e – Portrait of a Bijin [beautiful woman] 390 x 270mm  
\$200 – \$300
302. Utamaro Ukiyo-e Portrait of a Bijin [beautiful woman] 390 x 270mm  
\$200 – \$300
303. Utamaro Ukiyo-e Portrait of a Bijin [beautiful woman] 390 x 270mm  
\$200 – \$300
304. Utamaro Ukiyo-e – Portrait of a Geisha attending a Japanese gentleman 390 x 270mm  
\$200 – \$300
305. A Japanese Ukiyo – e woodblock print “A Windy day at Yokhaichi by Hiroshige after the original.  
250 x 370mm  
\$50 – \$100
306. Three Japanese Ukiyo-e woodblock prints  
\$100 – \$200
307. Three Japanese Ukiyo-e woodblock prints  
\$100 – \$200



# OBJECTS – APPLIED ARTS

308. Warren Tippet stone ware plate with tenmoku gestural decoration. D. 100mm  
\$100 – \$200
309. Len Castle umber pigment vase with double aperture. H. 140mm  
\$300 – \$400
- 309A. Len Castle  
Press moulded Blossom vase  
Stoneware, Black iron glaze with poured Chun overglaze  
H.560mm  
Illustrated: Ron Sang and Len Castle, Len Castle Potter (Auckland, 2002), cover  
\$11000 – \$15000
310. Chester Nealie bottle form vase, anagama fired. H. 140mm  
\$200 – \$300
- 310A. Roy Cowan  
Multiple aperture, slab built, high fired stoneware garden sculpture  
950 x 450 x 300mm
311. Peter Stitchbury stoneware casserole dish, bowl and two jugs  
\$50 – \$100
312. Denis O'Connor stoneware wine bottle shino glaze, pierced to the lower section to accommodate a tap. H. 500mm.  
\$600 – \$800
313. Denis O'Connor stoneware wine bottle salt glaze, pierced to the lower section to accommodate a tap. H. 560mm.  
\$600 – \$800

314. Denis O'Connor tapering conical bowl, incised to the well with an aquatic creature on a blue ground. D. 260mm.  
\$650 – \$800
315. Denis O'Connor bowl of small size incised with geometric motif. D. 145mm  
\$100 – \$200
316. Jeff Koons  
Balloon Dog (Blue)  
metalized porcelain, 1937/2300  
original Museum of Contemporary Art, Los Angeles label affixed verso  
260 x 260 x 110mm  
\$5500 – \$7500
317. Dale Chihuly (attributed)  
Seaforms  
Six blown glass forms  
Size varies  
\$2000 – \$4000
318. Keith Patterson  
Marquette for an unrealized sculpture commission on Devonport foreshore (1960 – 61)  
Papier maché with paint applied  
440mm high x 410mm length  
\$3000 – \$4000
319. Trudie Kroef  
Internal Space Bowl  
Porcelain and cast glass  
H. 180mm diam. 360mm  
\$3000 – \$5000
320. Paul Beadle  
Picket stick, cast in bronze, modelled in the form of an alchemist wearing a robe and cape supporting his neophyte on his shoulder. H.170mm  
\$600 – \$1000

321. John Middleditch  
Dancing woman  
Green variegated, patinated, burnished bronze raised on a plinth base. H. 760mm  
\$3000 – \$4000
322. Edgar Mansfield  
Animism  
Cast bronze sculpture raised on a stone plinth. H. 360mm  
\$2000 – \$3000
323. Ann Verdcourt  
White and Textured Cones 1988  
Ceramic 740 x 430 x 445mm  
\$600 – \$1200
324. Jim Wheeler  
Designo vs Prakriti  
Bronze and concrete  
Number 3 of an edition of 6  
Cast between 2002 and 2006. H.550mm  
\$1000 – \$2000
325. Paul Maysek  
Lyll Drink water  
Stoneware, cylindrical vase. H. 600mm.  
\$1200 – \$1800
326. Large Don Thornley branch pot H. 410 mm  
\$400 – \$600
327. Ted Dutch large porcelain signaller figure.  
H. 260mm  
\$600 – \$800
328. Ted Dutch signaller figure. H. 120mm See illustration  
\$200 – \$400
329. Martin Popplewell bowl le bol aux onions et la pipes (restored). D. 325mm  
\$300 – \$500
330. John Edgar light stone. L. 120mm  
\$300 – \$500
331. Len Castle large discoid vase with umber pigment impressed with artists cipher. H. 470 W. 500mm.  
\$1800 – \$2400
332. Len Castle stoneware bowl, potash and soda glaze to the well. D. 370mm.  
\$700 – \$1200
333. Len Castle umber pigmented hanging form with single aperture. D. 300mm  
\$450 – \$650
334. Len Castle pottery dish with jun type glaze to the well on a tenmoku ground. W. 430mm  
\$500 – \$800
335. Len Castle stoneware lidded casserole dish  
\$80 – \$120
336. Two Len Castle stoneware yunomi  
\$100 – \$200
337. Len Castle stoneware vase with four irregular cut-outs decorating the cylindrical form.  
H. 240mm  
\$300 – \$500
338. Len Castle bowl raised on a circular foot with a pale crackle glaze. D. 190mm  
\$200 – \$300
339. Len Castle bowl with jun type glaze on tenmoku ground. D. 190mm  
\$150 – \$250



309A

313 & 312



318 & 321



319



327 & 328



325



323



324



331



326



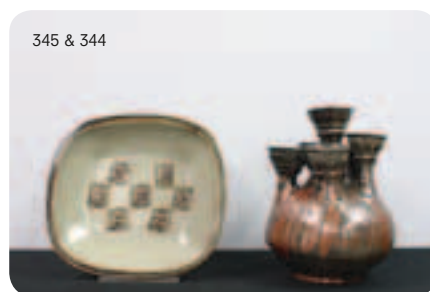
310A



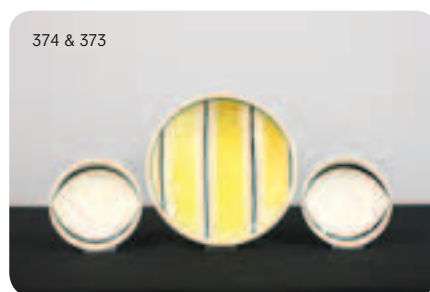
- 340. Len Castle bowl with jun type glaze on tenmoku ground. D. 190mm  
\$150 – \$250
- 341. Len Castle stoneware jug with brush work gestural decoration. H. 150mm  
\$200 – \$300
- 342. Len Castle lidded casserole dish with dark tenmoku glaze.  
\$150 – \$250
- 343. Len Castle early stoneware bowl with heavy poured feldspathic type glaze. D. 260mm  
\$800 – \$1200
- 344. A large and impressive Yvonne Rust tenmoku stoneware 'hydra' vase with central trumpet shaped aperture surrounded by four smaller trumpet shaped apertures. h. 450mm  
\$800 – \$1200
- 345. Len Castle large stoneware dish with impressed stamp designs. L. 460mm.  
\$1000 – \$1500



- 346. Len Castle vase of ovoid shape with four apertures, soda, potash and tenmoku glaze. H. 210mm  
\$1000 – \$1500
- 347. Len Castle stoneware dish with cruciform and impressed stamp design [faulted] L. 400mm  
\$200 – \$300
- 348. Len Castle hanging form burnt umber pigment with incised decoration. D. 300mm  
\$400 – \$600
- 349. Len Castle grass vase of tear drop form, umber pigment glaze. H. 200mm  
\$330 – \$400
- 350. Len Castle small stoneware lidded box. W. 70mm  
\$125 – \$200
- 351. Len Castle stoneware dish with incised cruciform decoration. D. 310mm  
\$450 – \$650



- 352. Margret Milne  
A good tall cylindrical stoneware vase with textured ochre exterior with blue glazed interior  
H.750.  
\$450 – \$800
- 353. Margret Milne  
Stone ware vase, similar to the previous lot but of smaller size  
H.640mm  
\$350 – \$650
- 354. Robyn Stewart  
Dung fired burnished pot incised with Maori rock art designs. D.320mm  
\$2800 – \$3500
- 355. Robyn Stewart  
Dung fired burnished pot with koru design. Minor restoration. D.280mm  
\$800 – \$1200
- 356. Brian Taylor Pacific Genesis sculpture carved from mahogany and kauri  
H.550mm  
\$150 – \$250



357. Graham Storm stoneware bowl with textured feldspathic glazed well on a tenmoku ground. D.300mm  
\$400 – \$600
358. Len Castle stoneware bowl with gestural decoration. D. 300mm  
\$250 – \$300
359. Barry Brickell stoneware bowl, cipher mark to the foot rim. D. 310mm  
\$300 – \$400
360. Barry Brickell stoneware plate with tenmoku glaze. L. 240mm  
\$100 – \$200
361. Estelle Martin anagama fired arrow pot. H. 290mm  
\$600 – \$800
362. Estelle Marin anagama fired ovoid vase. H. 260mm  
\$350 – \$500
363. Bruce Martin anagama fired mizusash (water pot) entitled 'A Cooling Breeze'. H. 220mm  
\$350 – \$500
364. Estelle Martin anagama fired cylindrical vessel. D. 190mm  
\$100 – \$200
365. Estelle Martin large impressive ovoid anagama fired vase. H. 350mm  
\$500 – \$800
366. Crown Lynn A pair of "Legend of Maui" platters designed and potted for Expo '70  
\$500 – \$800
367. Crown Lynn hand potted vase by Ernest Shufflebotham shape 14. H. 140mm  
\$200 – \$300
368. Rare Crown Lynn hand potted vase by Ernest Shufflebotham shape 60. H.230mm.  
\$900 – \$1400
369. An unusual Crown Lynn slip cast bowl with concentric bands to the upper section. Shape 2021. Small hairline crack. D.220mm  
\$300 – \$400
370. Crown Lynn slip cast vase, shape 2070. H. 250mm  
\$100 – \$200
371. Early Crown Lynn slip cast model of an elephant with unusual purple/gray glaze. W.190mm  
\$500 – \$800
372. Frank Carpay Crown Lynn wall plate decorated in underglaze inky blue marked with Handwerk cipher and W.P.1 and Tiki stamp. D. 360mm  
\$1600 – \$2400
373. Frank Carpay Crown Lynn bowl with banded yellow and black stripes, small hairline crack. Marked Handwerk H.11/1 and with Tiki stamp W. 250mm  
\$500 – \$800
374. Frank Carpay Crown Lynn. Set of six dessert bowls.  
\$400 – \$600
375. Daniel Steenstra Crown Lynn ovoid vase painted with floral decoration on olive ground. H. 170mm  
\$200 – \$300
376. John Parker matt white conical bowl with multiple piercings. D. 350mm  
\$600 – \$800
377. John Parker matt white grooved, conical, tapering vase. H. 250mm  
\$600 – \$800
378. John Parker circular bronze lustre bowl with deep well. D.350mm  
\$350 – \$500
379. John Parker bronze lustre cylindrical vase. H.150mm  
\$250 – \$400
380. John Parker matt white lathe turned vase. H.230mm  
\$500 – \$700
381. Briar Gardiner pottery vase with mottled green glaze. H. 90mm  
\$175 – \$225
382. Garry Nash, impressive large vase of ovoid shape, marbled blue and green cased glass. H. 460mm  
\$2500 – \$3500
383. Garry Nash. An unusual large cast glass portrait bust signed and dated 06 to the base. H. 380mm  
\$1500 – \$2000
384. Garry Nash large mottled red, blue and green cased glass vase. H. 380mm.  
\$1200 – \$1500
385. Garry Nash cylindrical mottled blue, yellow and green glass vase. H. 250  
\$350 – \$500
386. Garry Nash ovoid blue frosted glass vase. H. 300mm  
\$200 – \$400
387. Juliet Peter conjoined stoneware vase with multiple apertures, incised with artists cypher. W. 200mm  
\$300 – \$400
388. Barbara Hockenhill stoneware scroll form wall vase. H. 540mm  
\$180 – \$240
389. Helen Mason stoneware platter. W. 200mm  
\$80 – \$120
390. Two Juliet Peter circular stoneware platters. D. 230mm  
\$50 – \$80
391. Large Brian Gartside orb with rich light and dark blue glaze.  
\$300 – \$500
392. Warren Tippet pouring vessel  
\$50 – \$100
393. Potter unknown – ovoid stoneware vase with shino type glaze. H. 240mm  
\$50 – \$100
394. Barry Brickell small stoneware vase D. 70mm  
\$40 – \$60
395. Don Thornley platter. W. 250mm  
\$75 – \$125
396. Three pottery ramekins probably by St Ives  
\$100 – \$200
397. Andrew Van der Putten pouring bowl with lug form handle. D. 180mm  
\$100 – \$200
398. Andrew Van der Putten stoneware jug with single loop handle. H. 180mm  
\$100 – \$200
399. Richard Parker circular dish together with another small Richard Parker dish  
\$50 – \$100
400. Richard Parker rectangular dish painted with hill forms together with another circular dish  
\$50 – \$100
401. Doris Dutch stoneware wall plaque. 180 x 200mm  
\$300 – \$400
402. Doreen Blumhardt freeform stoneware dish. W. 210mm  
\$125 - \$175
403. Tini Finan. Five individually modelled musician figures  
\$200 - \$300
404. Set of three Rosemary Brittain bird forms  
\$75 - \$125
405. Two Barry Brickell ashtrays  
\$50-\$100



# Conditions of sale

Please note: it is assumed that all bidders at auction have read and agreed to the conditions described on this page.  
ART+OBJECT directors are available during the auction viewing to clarify any questions you may have.

1.  
**Registration:** Only registered bidders may bid at auction. You are required to complete a bidding card or absentee bidding form prior to the auction giving your correct name, address and telephone contact + supplementary information such as email addresses that you may wish to supply to ART+OBJECT
2.  
**Bidding:** The highest bidder will be the purchaser subject to the auctioneer accepting the winning bid and any vendor's reserve having been reached. The auctioneer has the right to refuse any bid. If this takes place or in the event of a dispute the auctioneer may call for bids at the previous lowest bid and proceed from this point. Bids advance at sums decreed by the auctioneer unless signaled otherwise by the auctioneer. No bids may be retracted. The auctioneer retains the right to bid on behalf of the vendor up to the reserve figure.
3.  
**Reserve:** Lots are offered and sold subject to the vendor's reserve price being met.
4.  
**Lots offered and sold as described and viewed:** ART+OBJECT makes all attempts to accurately describe and catalogue lots offered for sale. Notwithstanding this neither the vendor nor ART+OBJECT accepts any liability for errors of description or faults and imperfections whether described in writing or verbally. This applies to questions of authenticity and quality of the item. Buyers are deemed to have inspected the item thoroughly and proceed on their own judgment. The act of bidding is agreed by the buyer to be an indication that they are satisfied on all counts regarding condition and authenticity.
5.  
**Buyers premium:** The purchaser by bidding acknowledges their acceptance of a buyers premium of 15% + GST on the premium to be added to the hammer price in the event of a successful sale at auction.
6.  
**ART+OBJECT is an agent for a vendor:** A+O has the right to conduct the sale of an item on behalf of a vendor. This may include withdrawing an item from sale for any reason.
7.  
**Payment:** Successful bidders are required to make full payment immediately post sale – being either the day of the sale or the following day. If for any reason payment is delayed then a 20% deposit is required immediately and the balance to 100% required within 3 working days of the sale date. Payment can be made by Eftpos, bank cheque or cash. Cheques must be cleared before items are available for collection. Credit cards are not accepted.
8.  
**Failure to make payment:** If a purchaser fails to make payment as outlined in point 7 above ART+OBJECT may without any advice to the purchaser exercise its right to: a) rescind or stop the sale, b) re offer the lot for sale to an underbidder or at auction. ART+OBJECT reserves the right to pursue the purchaser for any difference in sale proceeds if this course of action is chosen, c) to pursue legal remedy for breach of contract.
9.  
**Collection of goods:** Purchased items are to be removed from ART+OBJECT premises immediately after payment or clearance of cheques. Absentee bidders must make provision for the uplifting of purchased items (see instructions on the facing page)

10.  
**Bidders obligations:** The act of bidding means all bidders acknowledge that they are personally responsible for payment if they are the successful bidder. This includes all registered absentee or telephone bidders. Bidders acting as an agent for a third party must obtain written authority from ART+OBJECT and provide written instructions from any represented party and their express commitment to pay all funds relating to a successful bid by their nominated agent.
11.  
**Bids under reserve & highest subject bids:** When the highest bid is below the vendor's reserve this work may be announced by the auctioneer as sold 'subject to vendor's authority' or some similar phrase. The effect of this announcement is to signify that the highest bidder will be the purchaser at the bid price if the vendor accepts this price. If this highest bid is accepted then the purchaser has entered a contract to purchase the item at the bid price plus any relevant buyers premium.

## Important advice for buyers

The following information does not form part of the conditions of sale, however buyers, particularly first time bidders are recommended to read these notes.

- A.  
**Bidding at auction:** Please ensure your instructions to the auctioneer are clear and easily understood. It is well to understand that during a busy sale with multiple bidders the auctioneer may not be able to see all bids at all times. It is recommended that you raise your bidding number clearly and without hesitation. If your bid is made in error or you have misunderstood the bidding level please advise the auctioneer immediately of your error – prior to the hammer falling. Please note that if you have made a bid and the hammer has fallen and you are the highest bidder you have entered a binding contract to purchase an item at the bid price. New bidders in particular are advised to make themselves known to the sale auctioneer who will assist you with any questions about the conduct of the auction.
- B.  
**Absentee bidding:** ART+OBJECT welcomes absentee bids once the necessary authority has been completed and lodged with ART+OBJECT. A+O will do all it can to ensure bids are lodged on your behalf but accepts no liability for failure to carry out these bids. See the Absentee bidding form in this catalogue for information on lodging absentee bids. These are accepted up to 2 hours prior to the published auction commencement.
- C.  
**Telephone bids:** The same conditions apply to telephone bids. It is highly preferable to bid over a landline as the vagaries of cellphone connections may result in disappointment. You will be telephoned prior to your indicated lot arising in the catalogue order. If the phone is engaged or connection impossible the sale will proceed without your bidding. At times during an auction the bidding can be frenetic so you need to be sure you give clear instructions to the person executing your bids. The auctioneer will endeavour to cater to the requirements of phone bidders but cannot wait for a phone bid so your prompt participation is requested.
- D.  
**New Zealand dollars:** All estimates in this catalogue are in New Zealand dollars. The amount to be paid by successful bidders on the payment date is the New Zealand dollar amount stated on the purchaser invoice. Exchange rate variations are at the risk of the purchaser.



# Absentee bid form

AUCTION NO 37

**New Collectors Art**  
24 June 2010

**Napoleon's Final Days**  
29 June 2010

**Tribal Arts & Objects**  
29 June 2010

This completed and signed form authorizes ART+OBJECT to bid on my behalf at the above mentioned auction for the following lots up to prices indicated below. These bids are to be executed at the lowest price levels possible. I understand that if successful I will purchase the lot or

lots at or below the prices listed on this form and the listed buyers premium for this sale (15%) and GST on the buyers premium. I warrant also that I have read and understood and agree to comply with the conditions of sale as printed in the catalogue.

Lot no.	Description	Bid maximum (New Zealand dollars)
_____	_____	_____
_____	_____	_____
_____	_____	_____
_____	_____	_____
_____	_____	_____
_____	_____	_____
_____	_____	_____
_____	_____	_____
_____	_____	_____
_____	_____	_____
_____	_____	_____
_____	_____	_____
_____	_____	_____
_____	_____	_____
_____	_____	_____
_____	_____	_____

**Payment and Delivery** ART+OBJECT will advise me as soon as is practical that I am the successful bidder of the lot or lots described above. I agree to pay immediately on receipt of this advice. Payment will be by cash, cheque or bank transfer. I understand that cheques will need to be cleared before goods can be uplifted or dispatched. I will arrange for collection or dispatch of my purchases. If ART+OBJECT is instructed by me to arrange for packing and dispatch of goods I agree to pay any costs incurred by ART+OBJECT. Note: ART+OBJECT requests that these arrangements are made prior to the auction date to ensure prompt delivery processing.

Please indicate as appropriate by ticking the box:

PHONE BID

ABSENTEE BID

MR/MRS/MS: \_\_\_\_\_

SURNAME: \_\_\_\_\_

POSTAL ADDRESS: \_\_\_\_\_

STREET ADDRESS: \_\_\_\_\_

BUSINESS PHONE: \_\_\_\_\_

MOBILE: \_\_\_\_\_

FAX: \_\_\_\_\_

EMAIL: \_\_\_\_\_

Signed as agreed: \_\_\_\_\_

To register for Absentee bidding this form must be lodged with ART+OBJECT by 2pm on the day of the published sale time in one of three ways:

1. Fax this completed form to ART+OBJECT +64 9 354 4645
2. Email a printed, signed and scanned form to: info@artandobject.co.nz
3. Post to ART+OBJECT, PO Box 68 - 345 Newton, Auckland 1145, New Zealand

**ART+OBJECT** 3 Abbey Street, Newton, Auckland, New Zealand. Telephone +64 9 354 4646, Freephone 0800 80 60 01

# New Collectors Art Artists Index

- Albrecht, Gretchen 13, 14, 116  
Benson, Lisa 138  
Bevan Ford, John 170  
Binding, Wellesley 84  
Blair, Philippa 36, 105, 106, 128, 167  
Blow, Michael 190  
Boroughs, Justin 110  
Brown, Nigel 1, 71, 199, 200  
Buchanan, Elizabeth 206  
Budd, L. 186  
Burnett, Tom 108, 109  
Chilcott, Gavin 212, 213  
Ching, Raymond 85, 86, 87, 88, 89  
Cleverley, Peter 201  
Cole, Ruth 211  
Crook, Gordon 32  
Culbert, Bill 162  
Dali, Salvador 126, 187  
De Lautour, Tony 49, 52, 121  
Deans, Austin 202  
Demente, Donna 198  
Dibble, Paul 56  
Dolby, Sarah 72, 140  
Dolezel, Jenny 114  
Drawbridge, John 127  
Drummond, Andrew 160  
Driver, Don 181  
Dudgeon, Ellis 157  
Dutch, Ted 50, 136, 188  
Edwards, Victoria 215  
Fairey, Shepherd 185  
Feu'u, Fatu 104, 177  
Fong, Luise 55, 139  
Frizzell, Dick 42, 101, 102, 150, 165, 183, 196  
Frizzel, Otis & Weston, Mike 179  
Gekko, Ogato 166  
Gimblett, Max 3, 31  
Greig, Jason 57, 58, 59, 60, 61, 62  
Grimsdale, Murray 214  
Guppy, Sarah 39  
Haffern, Gail 153  
Hammond, Bill 2, 12, 148  
Hanly, Pat 53, 67, 137, 149, 173  
Hartigan, Patrick 129  
Henderson, Louise 44, 147  
Hight, Michael 94  
Hipkins, Gavin 75  
Hollings, Anna 195  
Hopkins, Andrea 191  
Hotere, Ralph 93  
Hos, Kees 97, 107  
Hurley, Gavin 80, 81  
Illingworth, Michael 204  
Kahukiwa, Robyn 203  
Landara, Benjamin 115  
Larkin, Peata 134, 135  
Lee-Johnson, Eric 46, 141  
Leek, Saskia 68  
Leenards, Gerda 154  
Lewer, Richard 33  
MacDiarmid, Douglas 130  
McCahon, Colin 48  
McLeod, Andrew 76  
Manchester, Catherine 143  
Maughan, Karl 6  
Maw, Liz 38  
Miller, Peter 117  
Mitchell, Sam 37  
Moffitt, Trevor 119  
Moore R.P. 158, 159  
Mrkusich, Milan 83  
Nielson, Valerie 47  
Noble, Anne 155  
NZ Exhibition Posters 217, 218  
Palmer, Stanley 16, 17, 90, 91, 103, 174, 197  
Panyoczki, Peter 144, 145  
Patterson, Keith 113  
Patterson, Parkin 142  
Pheaney, Robert Francis 168  
Pick, Seraphine 70, 77, 78, 79  
Pickmere, Alison 98, 99, 100  
Pond-Eyley, Claudia 125  
Poppelwell, Martin 163  
Pound, Patrick 4, 5  
Pule, John 9, 69  
Reithmaier, Anne 43  
Reynolds, John 7, 8, 27, 28, 29, 132, 184  
Richmond, Dorothy Kate 64  
Riley, Bill 169  
Robinson, James 82  
Russell, Sharon Margaret 161  
Schoon, Theo 156  
Scott, Ian 133  
Shepherd, Michael 92  
Shin, April 164  
Siddell, Peter 34, 51, 122, 178  
Singer, Angela 207, 208, 209, 210  
Smither, Michael 35, 123, 124, 151  
Stoddart, Margaret 63  
Strauss, Marie 194  
Stringer, Terry 54  
Sydney, Grahame 11  
Tamaki, Suzanne 41  
Tapper, Garth 120  
Taylor, E. Mervyn 40, 180  
Te Waru Rewiri, Kura 146, 171  
Tokona, Joanna 182  
Tootill, Jon 45  
Tuck, Barbara 172  
Tuffery, Michael 176  
Unverricht, Daniel 205  
Walsh, John 74  
Watkins, Denys 95, 96  
Watson, Ruth 189  
Wells, Kate 131  
White, Robin 10, 30, 65, 152  
Willoughby, G. H 66  
Williams, Mervyn 216  
Williams, Simon 192, 193  
Wolfe, Pamela 18, 19, 20, 21, 22, 23, 24, 25, 26  
Womble, Frank 111  
Woodruffe, Paul 112  
Woollaston, Toss 15, 73





3 Abbey Street,  
Newton

PO Box 68 345, Newton  
Auckland 1145, New Zealand

Telephone +64 9 354 4646

Freephone 0800 80 60 01

Facsimile +64 9 354 4645

[info@artandobject.co.nz](mailto:info@artandobject.co.nz)

[www.artandobject.co.nz](http://www.artandobject.co.nz)