



art + object





New Collectors Art

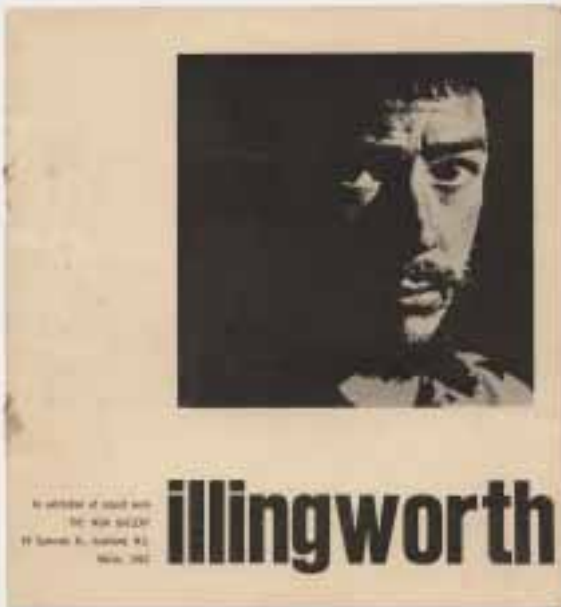
Tuesday June 24 at 6.30pm

EX 23 Archive Collection The Chester Nealie Book Fundraising Auction Furniture and Decorator Items Ruth Butterworth Collection

Thursday June 26 at 6.00pm

Cover:
Pat Hanly, The Kite. Lot 55.

Above:
Ian Scott, Night Flight (detail). Lot 164.



Michael Illingworth catalogue, March 1962.



Gallery announcement, early 1960's.

WELCOME TO A+O'S 80TH CATALOGUE since the company's formation in May 2007. This catalogue features the growing genre of New Collectors Art – one of the largest and most diverse of its type we have offered. At the heart of the New Collectors catalogue is the collection of one of New Zealand's earliest dealer gallerists, Don Wood. The landscape of the New Zealand art scene in the late 50s and early 60s was radically different to today. Our earliest gallerists were pioneers in the true sense of the word, quite literally bringing light into the void.

At the tender age of 22 Don Wood, along with friend and fellow architecture student Frank Lowe, opened one of New Zealand's first commercial dealer galleries at 64 Symonds Street in central Auckland. Originally called 'The Gallery' and soon after 'The Ikon Gallery', the premises were close enough to the School of Architecture that Don could attend to the gallery between lectures and studying.

The first exhibition was held in May 1960 and later that year Colin McCahon exhibited his iconic sixteen panel work from 1958, The Wake. Lois McIvor wrote in her recent book, Memoir of the Sixties (Auckland 2008): "I can still remember going there one afternoon and being overwhelmed by this wonderful vision that filled the gallery in a way that I had never seen before, with the white trunks of the kauris shimmering in the late afternoon light. I thought that it was a magical sight and as I stood in the centre of the room I felt I was surrounded by the paintings... I have seen 'The Wake' many times since then but it never looked to me the way it did that afternoon."

The Ikon Gallery moved to Lorne Street in September 1964 and closed permanently one year later, the effect of running a business with little in the way of a financial return taking its toll. In the five years it was open The Ikon Gallery held many exhibitions of key art-historical significance including Don Binney's first exhibition of paintings featuring native birds, Pat Hanly's original exhibition of his *Figures in Light* paintings and many more.

Don Wood brought his architectural eye for design and space to the nascent New Zealand commercial art world perhaps creating the model for today's sleek dealer galleries, McCahon himself referred to The Ikon Gallery as an 'environment'. Following on from his time as an art dealer Don returned to architecture and moved to Fiji where he resided for a number of years before settling in Auckland's North Shore. He continued to collect and follow contemporary New Zealand art.

Also included in this catalogue is a celebration of the work of Australian-based New Zealand ceramicist Chester Nealie. The New Zealand art and ceramics community has come together to contribute works to the catalogue to be auctioned to raise funds for a planned major publication on Chester's work. The quality and range of works which can be found between lots 520 to 598 is testimony to the high esteem in which he is held by his peers.



ART+OBJECT

3 Abbey Street
Newton
Auckland

PO Box 68 345
Newton
Auckland 1145

Telephone: +64 9 354 4646
Freephone: 0 800 80 60 01
Facsimile: +64 9 354 4645

info@artandobject.co.nz
www.artandobject.co.nz





PARNELL : 523 PARNELL ROAD, NEWMARKET
PONSONBY : 186A PONSONBY ROAD, PONSONBY
SHORTLAND STREET : 33 SHORTLAND STREET, AUCKLAND CBD

CHRISTCHURCH : 242 PAPANUI ROAD, MERIVALE
WELLINGTON : 8 WOODWARD STREET
DRESS-SMART AUCKLAND / DRESS-SMART WELLINGTON

WWW.WORKINGSTYLE.CO.NZ



THE PRESSING PLANT, NEW ZEALAND, 1.34PM

WORKING STYLE

MODERNISM IN NEW ZEALAND CATALOGUE HIGHLIGHTS

21 May 2014



Roy Cowan
Large ovoid vase decorated with
geometric and sun motifs
\$1755



Tony Fomison
Terracotta hanging form
\$3045



John Crichton
A large mosaic wall charger
\$4980



Roy Cowan
A large salt glazed floor vase with
incised concentric bands
\$8205



Edgar Mansfield
Animism Sculpture in bronze
\$3045



Roy Cowan
Stoneware slab form garden pot
\$4455



John Middleditch
Abstract sculpture in copper
\$2225



Jose Bribiesca
Chess Set
\$3045



Garth Chester
Curvesse Chair
\$5860



Ted Dutch
Signaller figures
Sold for between \$1755 and \$3400



Bob Roukema for Jon Jansen
Wingback Lounge Chair
\$3630



Frank Hofmann
Composition with Cactus, 1952
 \$5860

A+O's groundbreaking Modernism catalogue featured two unique collections of New Zealand design, applied art and fine art which focussed on the emergent modernist period 1940 to 1970. The Rodney Robertson collection was notable for some of the rarest and most sought after examples of New Zealand design and ceramics assembled by one of New Zealand's most well-known collecting identities. The William Vance archive collection of Theo Schoon Cave Art revealed in depth one of the seminal moments in New Zealand art history. The extraordinary archive was appreciated by collectors and scholars, making the pre-auction viewing something of a celebration of the decisive influence of this important modernist figure. The auction result was one of the most successful in A+O's history – a sale clearance rate of over 80% and numerous new auction records.



Dennis Knight-Turner
Painting No.6
 oil on board, 1952
 \$8910



The William Vance Archive of correspondence, documents, publications and photographs relating to the Theo Schoon Cave Art project, 1946 – 49
 \$26 380

Prices realised include buyer's premium



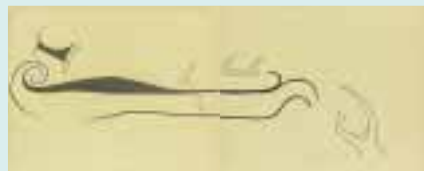
Theo Schoon
Earthquakes Duntroon
 oil on card
 \$24 620



Guy Ngan
Blue Formation No.6
 oil on board, 1975
 \$6095



Len Castle and Theo Schoon
 19 high-fired earthenware tablets with impressed stamps
 \$11 725



Theo Schoon
Craigmore, Pareora Parts one & two
 oil on card
 \$18 290



Colin McCahon's Letterbox
 From the artist's residence at 10 Partridge Street, Grey Lynn
 \$19 930



Theo Schoon
Ahuriri River. Part 1
 oil on card
 \$18 760



Theo Schoon
Ford's Hanging Rock part 4
 oil on card
 \$22 040



Guy Ngan
Habitation No.237
 Cast bronze on marble base, 1999
 \$9380

IMPORTANT PAINTINGS AND CONTEMPORARY ART

7 AUGUST 2014

FINAL ENTRIES INVITED

UNTIL JULY 11TH



Milan Mrkusich
Emblem V (In the Beginning)
oil on canvas
signed and dated '63; title inscribed verso
1450 x 1045mm
\$55 000 – \$75 000



Bill Hammond
Jealous Lover
acrylic on linen
title inscribed, signed and dated 1997
2130 x 1985mm
\$150 000 – \$200 000

Contact
Ben Plumbly, Director, Art
ben@artandobject.co.nz
09 354 4646 / 021 222 8183



Ralph Hotere
The Wind II
acrylic and dyes on canvas
signed; signed and dated '75 and
inscribed Banner for Song Cycle, Cat
No. 5 verso
2940 x 910mm
\$200 000 – \$275 000



Richard Killeen
Time to change the Greek hero No. 2
acrylic and collage on aluminium, 27 pieces
title inscribed, signed and dated June 1985; title
inscribed, signed and dated each piece verso
3100 x 3000mm: installation size variable
\$40 000 – \$55 000



RARE BOOKS

Wednesday 20 August

A+O's Rare Book auctions continue to go from strength to strength and the August 20 catalogue will be an important sale featuring a collection of Antiquarian books from the Poore Family Library, of 'The Retreat' Pakaraka in the Bay of Islands.

This longstanding collection includes a complete set of John Pinkerton's *Voyages and Travels 1808-1814*; Lieut A. Burnes *Travels into Bokhara* [1834]; Dr Samuel Collins *The Present State of Russia* [1671]; J. Baillie Fraser *Travels in Koordistan, Mesopotamia* [1840] and a collection of early legal books including *The Trial of Joseph Wall*.

Other entries include: a first edition of Walter Lawry Buller's *History of the Birds of New Zealand*, Land lease document for the Drury Church dated 1862 and with George Augustus Selwyn's seal, and a rare edition of *The Vicar of Wakefield* [1817] with 24 colour plates by Thomas Rowlandson. In addition the catalogue will include some excellent illustrated volumes such as the deluxe edition of *The Tempest* illustrated by Edmund Dulac and early photographs and maps.

Entries are invited until July 25

Contact:

Pam Plumbly
Rare Book Consultant
Phone 09 354 4646
Mob 021 448 200

EXHIBITING QUALITY LANDSCAPES

NEW ZEALAND'S FINEST LUXURY PROPERTIES

183 TUCKERS BEACH ROAD QUEENSTOWN

This stunning Tucker Beach Road home sits on over two and half acres of north facing land with spectacular mountain and Shotover River views. It offers exceptional living, privacy and numerous options to maximize the cleverly configured spaces. The open-plan layout of the designer kitchen, dining and living areas are perfect for entertaining.



luxuryrealestate.co.nz/QT59

5 3 3

LOT 20 CLOSEBURN STATION QUEENSTOWN

Lot 20 at Closeburn Station consists of one freehold title comprising of 4491m² of land with a 1/27th share in the 3000 acre high country sheep and cattle farm. This is a front row, premium and extremely private site within one of New Zealand's most unique rural lifestyle locations.



luxuryrealestate.co.nz/QT51

4,491m²

PUMPKIN HILL COROMANDEL

Distinctive and opulent, this beachfront residence sits elevated high above a secluded beach and revels in its location and aspect. Grand in style and proportion the home offers unrivalled splendor and luxury in one of New Zealand's most treasured destinations. The central location is within 90 minutes drive to Auckland, Hamilton and Tauranga.



luxuryrealestate.co.nz/NT60

5 4 4

535 SPEARGRASS FLAT ROAD QUEENSTOWN

This gorgeous family home is the complete package comprising of five bedrooms and three bathrooms on a single level. Set on 5,197m² of flat land on prestigious Speargrass Flat Road with stunning mountain views. Ideally located near The Hills Golf Club and Millbrook Resort and within the Arrowtown school zone.



luxuryrealestate.co.nz/QT58

5 3 2

QUEENSTOWN & ARROWTOWN

Terry Spice
+64 21 755 889
terry@luxuryrealestate.co.nz

AUCKLAND & SURROUNDS

Nick Horton
+64 21 530 000
nick@luxuryrealestate.co.nz

BAY OF ISLANDS & COROMANDEL

Charlie Brendon-Cook
+64 212 444 888
charlie@luxuryrealestate.co.nz

LUXURY REAL ESTATE

NEW ZEALAND

luxuryrealestate.co.nz



A good and rare Ngati Tarawhai fire surround. Modelled after a pare (lintel) and whakawae (jambs) from the door frame of a whareniui. Possibly by Tene Waitere, dated 1904, 1260 x 1350mm
\$4000 – \$8000

ASIAN AND DECORATIVE ARTS INCLUDING ARTS & CRAFTS CERAMICS FROM AN AUCKLAND COLLECTION

18 September 2014

Contact:

James Parkinson
Director

james@artandobject.co.nz
09 354 4646 / DDI 306 6193
mob 021 509 550

Giulia Rodighiero
Asian Art Specialist
Giulia@artandobject.co.nz
09 354 4646



A fine Chinese porcelain jar, Kangxi period (1662-1722) decorated in underglaze blue and copper red with three fruiting peach sprays reserved over an even celadon ground. H. 175mm. Provenance: Purchased from the Kwok Gallery, Singapore in 1984
\$6000 – \$8000



Joan Miro (attributed)
Stoneware vase, hand painted and modelled in low relief with an abstract face design. Signed with initials J M
H. 180mm
\$10 000 – \$15 000

New Objects

An opportunity to view and acquire new works
by renowned contemporary makers

Viewing 9–13 August 2014

Objectspace 8 Ponsonby Rd Auckland

Auction 6.30pm 13 August



Fran Allison / Pauline Bern / Stephen Bradbourne / Meliors Simms / Joanna Campbell
Octavia Cook / Deborah Crowe / Crystal Chain Gang / Mary Curtis / Sharon Fitness / Warwick Freeman
Kirsten Haydon / Corrina Hoseason / Andy Kingston / Trudie Kroef / Tessa Laird / Peter Lange
Karl Leonard / Rosemary McLeod / Gina Matchitt / Richard Parker / Ben Pearce / Emily Siddell
Richard Stratton / Manon van Kouswijk / Lisa Walker / Katy Wallace

Image: Biscuit Brooch by Warwick Freeman



MELBOURNE ART FAIR

13–17 August

Royal Exhibition Building, Carlton Gardens

Join the A+O team at the Melbourne Art Fair. In 2013 Hamish Coney was the New Zealand VIP Liaison for Kiwi collectors attending Sydney Contemporary. It was such a success he is reprising this role for The Melbourne Art Fair in August of this year. "Melbourne is the most established of all the Australasian Art Fairs. I've been five times and regard it as a must attend event. This year the programme has been greatly expanded by Barry Keldoulis and his team. The combination of the Art Fair, the external events programme and of course Melbourne itself means 2014 will be the best yet."

This year over 70 galleries will be represented from Australia, New Zealand, London, Singapore, Berlin, Santiago, Beijing, Hong Kong, Shanghai and New York. Over the course of a 25 year history the Melbourne Art Fair has been instrumental in stimulating critical and commercial attention for many key artists in the region and has been a vital space for New Zealand artists to engage with a wider regional and international discourse.

The fair takes place in the magnificent Royal Exhibition Building in Carlton Gardens within walking distance of the CBD – one of the great Victorian buildings in Australia.

VIP COLLECTOR PASS

The best way to attend the Melbourne Art Fair is to become a VIP Collector which includes a long list of benefits and entry to key events, not the least of which is the opening night Vernissage on Wednesday August 13. Tickets are limited and priced at AUD\$250 for VIP Collectors which includes the opening Vernissage and unlimited access during the Fair plus privileged access to special events. The list of benefits is too long to include here but log onto www.melbournartfair.com.au to book and view the VIP Collector Programme.



Sam Leach, *Baldessari on Safari*, 2014
Courtesy of Sullivan and Strumpf, Sydney.



MELBOURNE ART FAIR 2014 KEY FACTS

Dates

August 13–17th

Opening Night Vernissage

Wednesday 13 August
6pm – 10pm

VIP Collector First View

Wednesday 13 August
4pm – 6pm

For more information

See www.melbournartfair.com.au or contact Hamish Coney at hamish@artandobject.co.nz or call 09 354 4646



Arie Hellendoorn, *Splice*, 2014.
Courtesy of {Suite} Gallery, Wellington.

prepare
for the best...

Wednesday 13 August
Vernissage

6pm - 10pm

Thursday 14 August

11am - 6pm

Friday 15 August

11am - 8pm

Saturday 16 August

10am - 6pm

Sunday 17 August

10am - 5pm

For tickets and further information visit:
melbourneartfair.com.au

The Melbourne Art Fair is presented by the Melbourne Art Foundation, a not for profit organisation supporting living artists and contemporary art.

13-17 AUGUST 2014
MELBOURNE
ART FAIR
ROYAL
EXHIBITION
BUILDING

Venue Partner



Government Partners



ARTS
VICTORIA



Major Partners

CHANDON



Official Hotel Partner

SOFITEL
LUXURY HOTELS



EX23 fashion still,
Wellington
early 1990s.



EX 23 Archive Collection The Chester Nealie Book Fundraising Auction Furniture and Decorator Items Ruth Butterworth Collection

AUCTION

Thursday 26 June at 6.00pm

3 Abbey Street, Newton, Auckland

VIEWING

Friday 20 June, 9.00am – 5.00pm

Saturday 21 June, 11.00am – 4.00pm

Sunday 22 June, 11.00am – 4.00pm

Monday 23 June, 9.00am – 5.00pm

Tuesday 24 June, 9.00am – 1.00pm

Wednesday 25 June, 10.00am – 5.00pm

Thursday 26 June, 9.00am – 1.00pm



403



406



407



418



443



447

Ex 23 Archive Collection

- | | | |
|---|--|--|
| 400. Dallas two tone Chelsea satchel in brown Dallas leather and brass fittings, early example \$200 – \$400 | 416. 'Betty Page' handbag in brown torreno cowhide with brass Italian fittings \$150 – \$300 | 434. Brass Phoenix buckle, American, engraved EX 23, unique \$50 – \$100 |
| 401. Hard back backpack in black calf skin and black cowhide and brass fittings, early example \$200 – \$400 | 417. Frame top handbag in brown calfskin with Italian bag frame \$150 – \$300 | 435. Lucid Eye sunflower buckle in chrome \$30 – \$50 |
| 402. 'Sarah's Bag' oxblood shoulder bag in hand finished leather with all brass fittings, early example \$150 – \$300 | 418. 'Torso' handbag in oxblood NZ cowhide with handmade stainless steel rings \$150 – \$300 | 436. Lucid Eye sunflower buckle in antiqued brass \$30 – \$50 |
| 403. Double lock Brierley briefcase with brass fittings in hand finished brown New Zealand cowhide \$250 – \$500 | 419. Curved pony hide handbag in calfskin with Italian fittings \$150 – \$300 | 437. Five Pounamu insert brass buckles \$100 – \$200 |
| 404. Single lock imperial briefcase with internal zip divider in hand finished brown New Zealand cowhide \$200 – \$400 | 420. Three zip backpack in canvas duck and black NZ cowhide with pig skin lining \$150 – \$300 | 438. Three paua insert buckles \$50 – \$100 |
| 405. Classic canvas and leather satchel with cowhide and calfskin trimming \$150 – \$300 | 421. Suede and cowhide double pocket backpack in brown suede and cowhide with brass fittings \$200 – \$400 | 439. Four belt buckles, brass star, zodiac, Wellington and Moa \$100 – \$200 |
| 406. 'Pussy Galore' evening bag in pink rabbit skin and black calfskin with chain strap \$100 – \$200 | 422. All Leather satchel with brass lock in black NZ calfskin with central divider and pockets and shoulder strap \$250 – \$500 | |
| 407. Classic Gladstone bag in black New Zealand calfskin and cowhide with antiqued Italian fittings \$200 – \$400 | 423. 'Stuffle Bag' back pack in purple suede with black leather and canvas trimmings \$150 – 250 | |
| 408. Box backpack in hand finished vegetable tanned NZ cowhide with pewter fittings \$250 – \$500 | 424. Cheney box bag in black hand finished cowhide with single chrome lock \$100 – \$200 | |
| 409. 'Mad Dog' double strap shoulder bag in NZ tanned 'Mad Dog' leather, heavily waxed, chrome fittings, large size \$200 – \$400 | 425. 'Remarkable Carry Tote' from the Remarkable range in brown cowhide with stiffened sides and front pocket \$150 – \$300 | |
| 410. 'Mad Dog' double strap shoulder bag in NZ tanned 'Mad Dog' leather, heavily waxed, chrome fittings, medium size \$150 – \$300 | 426. Five leather belts, four in cowhide, one in brown, all with paua features \$100 – \$200 | |
| 411. 'Mad Dog' small double strap shoulder bag in NZ tanned 'Mad Dog' leather, heavily waxed with chrome fittings \$100 – \$200 | 427. Five leather belts in black cowhide including classic pewter belts and English brass \$100 – \$200 | |
| 412. Suede overnighter travel bag in green suede and cowhide with brass fittings \$300 – \$400 | 428. Five leather belts, three black cowhide, two brown including Russian star and EX 23 Zodiac buckle \$100 – \$200 | |
| 413. Three zip bag pack in brown suede cowhide and tan pigskin lining \$150 – \$300 | 429. Five leather belts, four black and one brown including classic conch belt and American coins \$100 – \$200 | |
| 414. Classic Chelsea handbag in black hand-finished cowhide with brass fittings, the first bag that EX 23 designed and made – a later example \$200 – \$400 | 430. Five leather belts including EX 23 Moa buckle, hand carved Mao buckle and Manchester design South down buckle \$100 – \$200 | |
| 415. Svelte carryall in black patented cowhide with deer hide inserts \$150 – \$300 | 431. 'EX 23' Brass buckle, rare, one of two ever made \$50 – \$100 | |
| | 432. 'Belt' unique brass buckle \$50 – \$100 | |
| | 433. Geil (Horny) chrome and brass unique buckle \$50 – \$100 | |

Vintage Zambesi Bags made by EX 23

The following eleven lots were made as Samples for Zambesi in the early 1990s, some of which went into limited production, others remain unique

- | | | |
|--|---|--|
| 440. Canvas and leather shoulder bag in brown cowhide and black canvas duck, Zambesi label \$200 – \$400 | 441. Canvas satchel with zip closer, leather strapping, Zambesi logo \$150 – \$300 | 442. Canvas and leather backpack in black canvas duck and black cowhide, Zambesi logos \$200 – \$400 |
| 443. 'Hat Box' with thonged seams and whalebone buckle, the shoulder strap with whalebone buckle \$300 – \$500 | 444. Black Calfskin wrap shoulder bag with whalebone buckle and chrome fittings \$150 – \$300 | 445. 'Binocular case' carry bag in stiffened black calf skin with chrome fittings \$200 – \$400 |
| 445A. Black leather double pocket back pack with brown leather trim and Zambesi logo \$200 – \$400 | 445B. Oxblood leather evening clutch purse with Zambesi logo \$100 – \$200 | 445C. Camera bag in soft black cowhide with Zambesi logo \$150 – \$200 |
| 445D. Half-moon shoulder bag in hand finished leather with Zambesi metal tag \$100 – \$200 | 445E. Black patent box bag [no strap] together with Zambesi key rings with logos \$50 – \$100 | |



452

446. Briley briefcase with single brass lock and double brass buckles, complete with shoulder strap, early example, in hand finished black cowhide
\$100 – \$200
447. Double lock attaché briefcase in pig skin lined black cowhide with applique front pocket, coverable to back pack with shoulder strap
\$250 – \$400
448. Gladstone top briefcase in ox blood wiper cowhide with applique front pocket and double dividers
\$250 – \$400
449. Single lock briefcase in stiffened black calfskin lined with pigskin, central divider and pockets complete with shoulder strap
\$200 – \$400
450. Pewter Gladstone-top briefcase in stiffened matte black cowhide
\$150 – \$300
451. Canvas and leather double sided satchel in blue canvas duck with black cowhide and calfskin trimmings
\$150 – \$250
452. Gladstone bag in brown cowhide with Italian fittings
\$200 – \$400
453. Gladstone bag in brown 'Mad dog' leather
\$200 – \$400
454. Briefcase in stiffened black leather with wrap over closure and internal divider and pockets. A unique sample
\$200 – \$400
455. Zip top brief case in black cowhide with central divider
\$150 – \$300
456. Frame top bag pack in soft cowhide with stiffened top and applique front pocket and Italian fittings
\$200 – \$400
457. Shoulder tote bag in black calfskin, fabric lined with zip pocket
\$200 – \$400
458. Duffle bag in brown calfskin with brass fittings and black cowhide drawstring
\$150 – \$250
459. Jewel tote bag in green suede with black cowhide trim
\$150 – \$250
460. Jewel tote bag in black suede with 'Elephant ear' print trim
\$150 – \$250
461. Women's carryall in matte black cowhide with black satin lining
\$150 – \$250
462. Women's carry all shoulder bag in vintage red/brown calfskin with black satin lining
\$150 – \$250
463. Black printed cowhide shoulder bag piped in gold leather with pewter fittings
\$150 – \$250
464. Brown leather shoulder bag with bound edges and black fabric lining and brass fittings
\$150 – \$250
465. 'Preppy' handbag in black patented pigskin, internal pocketing and fabric lining
\$150 – \$300
466. No lot
467. Two leather belts, one with paua shell discs
\$30 – \$50
468. Five leather belts including Cobra buckle, conch shell harness and metal applique
\$100 – \$200
469. Five leather belts including classic EX 23 harness belt
\$100 – \$200
470. Five leather belts including bondage harness belt, overlong eyelet belt and others
\$100 – \$200
471. Paua insert belts and five paua buckle sets without straps
\$100 – \$200
472. Four belt buckles, including brass star, zodiac, Wellington and Moa
\$80 – \$120
473. Four belt buckles, including lucid eye abstract flower, zodiac, Moa and Wellington
\$80 – \$120
474. Four belt buckles including dollar sign, zodiac and two Moa
\$80 – \$120
475. Four belt buckles, lucid eye brass mutant flower, zodiac, Moa and Wellington
\$80 – \$120
476. Four belt buckles including two Moa, Zodiac and Wellington
\$80 – \$120
477. Canvas and leather backpack in brown canvas duck with black leather trim and three applique pockets
\$150 – \$250
478. Extended cube handbag in black Crocodile printed cowhide
\$150 – \$250
479. Gold convertible handbag with shoulder strap in rich brown cowhide lined in black pigskin, convertible to backpack
\$150 – \$250
480. Classic Chelsea bag in printed black leather and lined in black pigskin
\$150 – \$200
481. Camera bag in black nylon and black patented leather
\$100 – \$200
482. Bassinger women's bag with brass buckle in hand finished cowhide
\$100 – \$200
483. Opera bag in black cowhide with calfskin lining
\$100 – \$200
484. Black and white patented hand bag with magnetic clasp
\$100 – \$200
485. 'Disc-oh' circular handbag in black suede with black calfskin trim
\$100 – \$200
486. Classic belt bag in hand finished pewter calfskin and black leather
\$75 – \$125
487. EX 23 black calf skin belt pouch with zip and dome pockets
\$75 – \$125
488. Classic belt pouch in green suede and black leather
\$75 – \$125
489. Ex money belt with zip and dome pockets
\$75 – \$125
- 489A. Classic and leather satchel with handle and shoulder strap, canvas duck and calf skin, single lock design
\$150 – \$200
490. Classic canvas and leather satchel, as above with double buckle version. First production sample ca 1986, with later shoulder strap
\$150 – \$300
491. Double lock attaché brief case in rich brown cowhide, suede lined, external and internal pocketing, no shoulder strap
\$200 – \$400
492. Double lock soft attaché in navy oiled cowhide, original production sample, ca 1980
\$150 – \$200
493. Pewter Gladstone briefcase in stiffened black suede cowhide
\$200 – \$400
494. Vinyl DJ bag, stiffened sides for AR shop opening, Dec 1992
\$100 – \$200
495. Woman's business satchel in vintage [1960's] English calf hide, double handle
\$150 – \$300

- 496. Black stiffened calfskin business folder
\$100 – \$200
- 497. Woman's carry Toto in brown 'primitive' leather,
from the Remarkable range, ca 1993
\$150 – \$200
- 498. Tapestry carry bag in hand woven tapestry and
black leather trim.
\$150 – \$300
- 499. No lot
- 500. Shoulder bag in pony cowhide with black
leather trim and cowboy buckles, ca 1986
\$150 – \$300
- 501. '60's brass ring' handbag, in black calfskin
\$100 – \$200
- 502. 'Bambi Bag' carry bag in black calfskin with
deer hide inserts
\$150 – \$300
- 503. Frame top handbag in black calfskin
\$100 – \$200
- 504. 'Circle Bag' in black calfskin, ca 1988
\$100 – \$200
- 505. 'Triangle Bag' in black hand finished cowhide
with calfskin shoulder straps
\$100 – \$200
- 506. '60's Shopper' in rich brown calfskin with
leather covered brass rings
\$100 – \$200
- 507. 'Hexagon shoulder bag' in rich brown calfskin
with black trim
\$100 – \$200
- 508. 'Over the Hill' handbag in stiffened brown
calfskin, ca 1989
\$100 – \$200
- 509. Pewter frame top handbag in black calfskin and
satin lined
\$100 – \$200
- 510. Two leather belts with Paua discs, hand finished
brown cowhide, one sized 34 – 36 inches and
the other sized 30 – 34 inches
\$50 – \$100
- 510A. Two Paua Disc Belt in hand finished brown
cowhide, one sized 34 – 36 inches, the other
sized 30 – 34 inches
\$50 – \$100
- 511. Six belts with hand crafted buckles, 3 in
vintage whalebone, 2 in cowhorn, and 1 in
vintage lignum vitae
\$50 – \$100
- 512. Four belts with detachable feature buckles, EX
23 Pewter, Sunflower, Paua and Greenstone
\$100 – \$200
- 513. Wallet and cheque holder in pigskin with
brocade inserts
\$50 – \$100
- 513A. Wallet and cheque holder in pigskin with
brocade inserts
\$50 – \$100



- 513B. Panel cheque folder, cowhide purse, and blue
ostrich print coin purse
\$50 – \$100
- 513C. Cowhide cheque folder, cowhide purse and
brown leather wallet/purse
\$50-\$100
- 513D. Two black pigskin cheque folders and black
leather wallet/purse
\$50 – \$100
- 513E. One pigskin cheque folder and 2 printed
leather black cowhide wallets
\$50 – \$100
- 514. Leather 3 zip backpack in hand finished silver
leather with black leather trim, ca 1988
\$150 – \$200
- 515. 'Remarkable Range' backpack in heavily oiled
primitive leather
\$100 – \$200
- 516. Nylon and patent backpack
\$100 – \$200
- 517. Suede and brown leather backpack
\$150 – \$200
- 518. EX 23 for Logans, backpack in striped canvas
with leather trim
\$100 – \$200
- 519. Gladstone topped backpack in brown calfskin,
unique example
\$200 – \$400

The Chester Nealie Book Fundraising Auction will commence at approximately 7pm

- 520. Chester Nealie
Sprigged bottle, wood fired, natural ash glaze,
signed 2012. H. 170mm
\$350 – \$500
- 521. Chester Nealie
Lugged bottle, multi wood fired, natural ash
glaze, signed 2013. H. 155mm
\$420 – \$600
- 522. Chester Nealie
Cauldron, wood fired, signed 2012. H. 100mm
\$180 – \$300
- 523. Chester Nealie
Group of three bottles, wood fired, celadon
glaze with shell marks, signed 2012. Tallest H.
140mm
\$550 – \$750
- 524. Chester Nealie
Large bottle, wood fired salt glazed celadon
glaze, signed 2010. H. 410mm
\$4000 – \$6000
- 525. Graeme Storm
Tall stamped cylinder, barium blue glaze, signed
1970s. H. 415mm
\$50 – \$100



526. Graeme Storm
Tall stamped cylinder, barium blue glaze, signed 1970s. H. 300mm
\$40 – \$60
527. Graeme Storm
Round vase, barium blue glaze, signed 1970's.
H. 105mm
\$30 – \$50
528. Don Thornley
Round and slab construction, orange and green
decoration, signed 1970's. H. 220mm
\$30 – \$50
529. Pat Perrin
Round vase thrown and stretched, manganese
wash, unsigned, 1960's. H. 150mm
\$40 – \$80
530. Andrew van der Putten
Stopped cylindrical bottle with handle,
copper green glaze with red blush, signed. H.
170mm
\$30 – \$50
531. Howard Williams
Slip cast bowl, white interior copper wash,
exterior with sgraffito decoration, signed 1970's
\$30 – \$50
532. Jean Hastedt
Rectangular kaleidoscope, coloured glass,
signed 1970's. H. 220mm
\$20 – \$40
533. Velleska Campion
Five sided dish, with fruit motif, signed 1989.
W. 170mm
\$20 – \$40
534. Nick Stather
Beer mug, celadon glaze inscribed with
"Chestermatic Booze Dispenser" motif, signed
1970's. H. 140mm
\$20 – \$40
535. Anneke Borren
Ribbed stoneware jar, anagama fired with
turned kauri lid. H. 200mm
\$400 – \$600
536. Anneke Borren
Wood fired lidded stoneware jar of ovoid
shape, the bottom section ribbed, the upper
section painted with leaf decoration. Fired in
the wood kiln of Hanne Eriksen, Norre, Snede,
Denmark. Potters initials to the base and dated
1980. H.180mm
\$200 – \$400
537. Anneke Borren
Wood fired lidded stoneware jar, ovoid shape
painted with leaf decoration. Fired in the wood
kiln of Hanne Eriksen, Norre, Snede, Denmark.
Potters initials to the base and dated 1980. H.
180mm
\$200 – \$400
538. Andrew van der Putten
Stoneware jar with recessed lid and red glaze,
circa 1985. H. 150mm
\$50 – \$100
539. Andrew van der Putten
Stoneware jar, ovoid with double aperture, ca
1985. H. 150mm
\$50 – \$100
540. Chester Nealie
Lugged bottle, wood fired. H. 130mm
\$100 – \$200
541. Chester Nealie
Lugged bottle with impressed window
decoration, wood fired. H. 100mm
\$50 – \$100
542. Graham Ambrose
Large and impressive orange glazed bowl.
Potter's initials to the base. D. 500mm
\$400 – \$800
543. Elena Renker
Stoneware bowl with shino glaze. D. 330mm
\$150 – \$300
544. Len Castle
Stoneware bowl with shino glaze, Warkworth
firing. Impressed initials to the base. D. 300mm
\$200 – \$300
545. Len Castle
Stoneware bowl with shino glaze, Warkworth
firing. Impressed initials to the base. D. 300mm
\$200 – \$300
546. Anneke Borren
Stoneware vase, baluster shape with swollen
ovoid base, painted gestural decoration on a
brown ground. H. 330mm
\$200 – \$400
547. Rick Rudd
Bottle, earthenware, 2012. H. 450mm
\$250 – \$400
548. Michael O'Donnell
Angama fired stoneware vase, signed to the
base. H. 210mm
\$250 – \$500
549. Don Thornley
Stoneware vase with shino glaze. H. 310mm
\$40 – \$80
550. Aaron Scythe
Hand painted porcelain tea bowl
\$50 – \$100
551. Len Castle
Stoneware bowl with tenmoku glaze and wax
resist quince blossom decoration.
Impressed initials to the base. D. 340mm
\$350 – \$500
552. Jason Hess (USA)
Six stoneware plates, three with tenmoku
glaze, one with shino glaze, one with pale
crackled celadon glaze, the last anagama fired.
All with an impressed mark. D. 315mm
\$500 – \$800
553. A large shino glaze wood-fired bottle with shell
impressions. H. 500mm
\$1500 – \$2400
554. Chester Nealie
Large ovoid floor vase with lug handles to the
shoulder, wood fired celadon glaze. H. 480mm
\$1800 – \$2400
555. Chester Nealie
Cauldron with lug handles, wood fired,
exhibition label affixed to the base. D. 120mm
\$300 – \$500
556. Chester Nealie
Bottle vase, wood fired. H. 170mm
\$300 – \$500
557. Denis O'Connor
Mystery of the wheel
Salt glazed porcelain vessel. From the last salt
firing in 1983. D. 120mm
\$3000 – \$4000
558. Denis O'Connor
I remember Tamaki drive
Earthenware fired swamp clay painted with
acrylic paint and with slate lid.
This important piece was exhibited at the Denis
Cohn Gallery in 1980 in a pivotal exhibition
by five ceramic artists known as the '5 x 5'.
The artists were Denis O'Connor, Bronwynne
Cornish, Warren Tippett, John Parker and Peter
Hawkesby. This show has been identified by
Moyra Elliot in her book Conetendown and
Douglas Lloyd Jenkins in At Home, a century
of NZ design as a key moment when studio
ceramics re-imagined its relevance and
future. The piece accompanied by a letter of
provenance by Denis O'Connor. H. 270mm
W. 270mm L. 295mm
\$4000 – \$6000
559. Marilyn Wiseman
"Echo" white glazed ceramic vase. H. 420mm
\$1200 – \$1500
560. Greg Barron
Neolithic form, wood fired stoneware.
L. 270mm
\$200 – \$400
561. George Kojis
Lidded stoneware vessel. Signed and dated
1991. Anagama fired in the kiln Chester Nealie
built at the Whanganui Polytech in the 1980s.
H. 260mm
\$150 – \$250
562. Barry Brickell
Stoneware lidded pot with ash glaze.
H. 280mm
\$30 – \$50
563. John Parker
Black and white crackle orb vase. H. 240mm
\$200 – \$300
564. Nadine Spalter
Vessel, glazed porcelain. W. 190mm
\$150 – \$250
565. Peter Lange
Stoneware bowl, salt glazed with hairs fur
decoration to the well. D. 260mm
\$200 – \$400

535



558



553



559



554



555



556





566. Suzy Dunser
Soda fired teapot
\$150 – \$250

567. Helen Perrett
Hare, stoneware sculpture, signed to the interior of the base. H. 500mm
\$350 – \$500

568. Christine Thacker
Hide glazed pottery jug with hand painted inscription which reads "Imagine if elephants ruled on earth, would they hunt us down for the currency of our hardened hearts". Signed to the base. Sold together with an A4 page depicting an Elephant climbing into a car. H. 320mm
note: Half of the proceeds of this jug will go towards the Chester Nealie publication and the other half will be donated to World Wide Fund for Nature
\$400 – \$600

569. Anneke Borren
Earthenware orb form painted with geometric designs. Potter's cypher mark to the base. H. 160mm
\$200 – \$400

570. Len Castle
Stoneware bowl with shino glaze. Impressed initials to the base. D. 290mm
\$200 – \$300

571. Len Castle
Large stoneware bowl with blue glaze. Impressed initials to the base. D. 380mm
\$400 – \$600

572. Len Castle
Three conjoined stoneware vases, ash glaze to the exterior with interior tenmoku glaze. Impressed initials to the base H. 150mm
\$200 – \$300

573. Peter Stichbury
Large early stoneware teapot with cane handle. Potters initials impressed to the base. H. 260mm
\$350 – \$500

574. Lisa Walker
Pendant, mixed media signed and dated 12 verso. 120 x 120mm
\$400 – \$600

575. Bronwynne Cornish
Chimney Cat, red earthenware, 1985. H. 350mm
\$800 – \$1200

576. Peter Collis
White crackle glaze bottle vase. H. 330mm
\$100 – \$200

577. Ennis Oliver
Stoneware platter with floral decoration. W. 380mm
\$50 – \$100

578. Andy Kingston
Whangaroa Whispers glazed earthenware, from Spirit Channel Surfing 2014, H. 260mm x W. 110mm
\$600 – \$1000

579. Galia Amsel
Floe 10 Cast jade and clear gaffer glass, handsmoothed, sandblasted etched texture, polished. 500 x 500 x 105mm
\$5000 – \$7000



568



573

580. Ross Mitchell-Anyon
Large white glazed jug. H.340mm
\$150 – \$250
581. Chris Weaver
Porcelain teapot with tape measure handle
\$200 – \$400
582. Claire Mahoney
Glazed stoneware pendent
\$40 – \$80
583. Kate Newby
'Something Holding Something Together'
silver and bronze casts of found objects,
ceramic rock, 2014. Together with a copy of
Incredible Feeling
\$1000 – \$2000
584. Kate Newby
'Bang bang bang', ceramic rocks 2014.
Together with a copy of Incredible Feeling
\$1000 – \$2000
585. Nigel Brown
'Rangitoto Looms Large', woodcut title
inscribed, signed and dated 1989 No. 6/15.
380 x 500mm
\$250 – \$500
586. 'Harataonga', bamboo etching, title inscribed
signed and dated 2010. 530 x 750mm
\$200 – \$400

587. Warwick Lidgard
Untitled, oil on board, signed and dated 2013.
400 x 600mm
\$1000 – \$1500
588. Dean Buchanan
'Rail Bridge' oil on canvas signed and dated '13.
1820 x 1280mm
\$2000 – \$3000
589. Vincent Ward, Inhale/Exhale, Ron Sang
Publications hardback book with French
fold jacket, 180 full-colour pages and four
impressive four-page gatefolds
\$75 – \$150
590. Ralph Hotere, Ron Sang Publications hardback
book, fully illustrated with essays by Kriselle
Baker and Vincent O Sullivan
\$75 – \$150
591. Greer Twiss, Ron Sang Publications hard
backbook, fully illustrated covering a wide body
of work spanning the last six decades
\$75 – \$125
592. Pat Hanly by Gregory O'Brien, Ron Sang
Publications hardback book. This monograph
celebrates Pat Hanly's remarkable life work.
The book won the illustrative Non Fiction
award at the NZ Post Book awards in 2013
\$75 – \$125



575



583



593. Greer Twiss
Winged Victory, mixed media signed and dated
 13, 180 x 120mm
 \$150 – \$300

594. Duncan Shearer bottle vase, soda fired with
 crackle glaze. H. 370mm
 \$100 – \$200

595. Jeff Thomson
Weaving, used corrugated iron, 1440 x 820mm
 \$1000 – \$2000

596. Richard Parker
 Green glazed vase with golden eyes. Signed
 and dated 2012 to a label affixed to the base.
 H. 310mm
 \$800 – \$1200



588



578

597. Carol Stewart
 Wood fired bottle. H. 370mm
 \$100 – \$200

598. Rachel Bell
 Spoon necklace
 \$250 – \$300

598A. John Perry Presley quartet Silkscreen print,
 signed verso
 600 x 600mm
 \$350 – \$500



595

Furniture and Decorator items

599. John Middleditch (attributed)
Carved Maori modernist tekoteko figure.
H. 1700mm
\$800 – \$1200
600. Set of six Resol DD designer chairs, injection moulded plastic seats raised on aluminium legs
\$300 – \$500
601. Ebonised contemporary dining table raised on cabriole legs complete with six side chairs and two open armed chairs
\$1500 – \$2500
602. Rimu library ladder
\$150 – \$250
603. 1960s coffee table with tile top. W. 930mm
\$50 – \$100
604. New Zealand camphorwood travelling trunk with metal binding, inscribed T.A. Blake, and with early travel labels affixed. W. 960mm
\$500 – \$1000
605. A Louis XV Rococo style canap with gilt wood framing in chocolate velvet upholstery.
L. 1860mm
Provenance: Previously in the collection of Alannah Currie, the lead singer of the British band the Thompson twins
\$1500 – \$2500
606. Pair Louis XV fauteuil with gilt wood framing in chocolate velvet upholstery
Provenance: As with the previous lot
\$1500 – \$2500
607. Pair Louis XV fauteuil with gilt wood framing in chocolate velvet upholstery
Provenance: As with the previous lot
\$1500 – \$2500
608. A Baltic pine foot locker with plank top
\$200 – \$300
609. Pair of contemporary bar stools, aluminium with inset wooden seats
\$150 – \$300
610. Three industrial design stools with tubular metal framing and pine seats
\$200 – \$300
611. Charles and Ray Eames for Vitra
Plastic stacking chair with chromium plated base
\$100 – \$200
612. West German 1960's pottery vase and jug [faulted]
\$50 – \$100
613. Cast concrete plinth. H. 600mm
\$50 – \$100
614. Blue painted industrial table with metal tray to the base on three wheels. D. 840mm
\$250 – \$500



606



605



604

615. Green painted rustic easel. H. 1850mm
\$200 – \$400
616. A large solid square oak dining table raised on four rectangular plinth legs. 1800 x 1800mm
\$1000 – \$2000
617. A cast concrete neoclassical plinth. H. 760mm
\$50 – \$100
618. 1920's twin pedestal kauri and rimu desk with central drawer, flanked by sliding trays and four drawers each side. W. 1530
\$600 – \$1200
619. Pair of blackened brass three branch candelabra
\$150 – \$300
- 619A. Quad stereo system comprising the Quad 22 control unit, a pair of Quad 2 valve amplifiers and a pair of Quad electrostatic loudspeakers together with a box of spare parts and Quad instruction booklets and associated material
\$1000 – \$2000
- 619B. Quad 33 stereo system comprising a Quad 33 amplifier, a Quod 303 poweramplifier, and a pair of Magneplanar loudspeakers model SNGa
\$1000 – \$2000
620. Kofod Larsen
Reclining lounge chair and marching ottoman
\$1000 – \$1500
621. Folk Olsen
Reclining lounge chair with teak frame and black vinyl upholstery together with an associated ottoman in rosewood with black vinyl upholstery
\$1200 – \$1800
622. Four 1950's oak New Zealand made side chairs
\$600 – \$800
623. Philippe Starck for Vitra
Set of four Louis 20 chairs, green polypropylene with aluminium framing. Originally designed in 1991, factory impressed marks to the underside of the seat and original Vitra labels
\$1500 – \$2000
624. Italian amber and green swirled Murano glass table lamp with original shade
\$600 – \$800
625. Curtis Jere
Eagle bird sculpture the three metal eagles issuing from a green serpentine base. Signed and dated '71. H. 1150mm
\$1500 – \$2000
626. Curtis Jere
Bronze figure of a stork standing on a rocky marble base. H. 580mm
\$600 – \$800
627. Curtis Jere
Three bronze birds in flight raised from a marble base. H. 560mm
\$500 – \$800



628. Curtis Jere
Three bronze birds in flight issuing from a
marble base. H. 250mm
\$300 – \$400
629. Three Musketeer mid-century flying birds in
oak and brass
\$200 – \$500
630. Large and rare Masketeer hunting falcon wall
sculpture in mahogany and brass. L. 1500mm
\$750 – \$1000
631. Unique Italian early 1950s meat slicer,
rare small chop model
\$6500 – \$7500
632. Tharns leather wing back chair
\$500 – \$800
633. Silver plated cutlery canteen
\$50 – \$100
634. Arts and crafts cabinet
\$100 – \$200
635. Pair of 1920s barber chairs
\$200 – \$400
636. Italian travel trunk
\$200 – \$400
637. Art Deco period hall stand with propeller sides
\$200 – \$400
638. Art Nouveau period side table
\$100 – \$200
639. Baltic pine trunk
\$100 – \$200
640. De Sede design, contemporary reclining
armchair in red suede leather with integral
ottoman
\$500 – \$1000
641. Matthew von Sturmer and Helen Homes
Coffee table with brass frame and etched blue
glass top
1600 x 600mm
\$500 – \$800
642. Frances Battersby
Temple of golden hearts
Cut brass sculptural form, 1989 H. 2000mm
\$500 – \$800
643. Timothy John
Mastermind chair from the woven series. Bent
blackened wire and industrial synthetic felt
\$800 – \$1500
644. Timothy John
Optimist light from the woven series.
H. 1050mm
\$500 – \$800
645. Rare 1970s Fantasia Fibre optic colour lamp
\$150 – \$250
646. Philippe Starck for Kartell
Pair of Miss Trip side chairs
\$200 – \$400



625



647. Low line black leather couch with ebonised wood frame. W. 2500mm
\$400 – \$800
648. Clement Meadmore
Pair of string chairs with blackened tubular steel frames
\$400 – \$800
649. Whites Aviation, large hand coloured print of Auckland depicting the Harbour Bridge in the foreground. Whites inscription to the bottom right hand corner. 760 x 1000mm
\$500 – \$1000
650. Large decorative framed subway station poster, Kings Highway, Brooklyn etc
800x 540mm
\$100 – \$200
651. Large decorative subway station poster, Merton Garage, South Wimbledon etc
600 x 840mm
\$200 – \$400

The Ruth Butterworth Collection and other objects

652. Len Castle
Blossom vase
impressive slab built vase with jun glaze over tenmoku. Impressed initials to the base. H. 530mm
\$6000 – \$10 000
653. Len Castle
Stoneware gourd vase, yellow ochre pigment, wood ash glaze to the neck. LC incised on the base.
Exhibited: [Making the Molecules Dance. Len Castle Ceramics a Retrospective Exhibition 1947-1994](#), Catalogue number 91, catalogue label affixed to the base. H. 350mm
Len Castle's catalogue notes from 1994 state "*Made in a two piece plaster mould with impressed decoration. A response to my enjoyment of the fruits of the organic world.*"
\$800 – \$1400
654. Paul Maseyk
Lidded stoneware jar decorated with a stylised golliwog figure. H. 230mm
\$200 – \$400
655. Geoff Mincham
Earthenware dish of elliptical shape with sgraffito cut banding, signed and dated '02. L. 560mm
\$400 – \$600
656. Brian Gartside
Two circular stoneware dishes. D. 340mm
\$100 – \$200
657. Len Castle
Stoneware flagon, originally made for the Dees-stalkers Inn, Ponsonby road Auckland, incised initials. H. 200mm
\$200 – \$400
658. Barbara Hockenull
Large porcelain patchwork bowl. D. 400mm
\$150 – \$250
659. Len Castle
Large stoneware bowl with jun glaze to the well, tenmoku to the exterior, impressed initials. D. 380mm
\$500 – \$800

660. Len Castle
Stoneware bowl, with ash and complex copper glaze to the well, tenmoku to the exterior, impressed initials. D. 360mm
\$500 – \$800

661. Len Castle
Earth book black stained earthenware, impressed initials. W. 170mm
\$300 – \$500

662. Scott Hockenull
Stoneware bowl textured exterior the interior painted with a palm tree. L. 490mm
\$200 – \$300

663. Steve Fulmer
Ovoid earthenware vase decorated with red bands, impressed potter's cypher. H. 250mm
\$150 – \$250

664. Yvonne Rust
Garden lantern, tenmoku over ash glaze, with multiple apertures and coloured glass inserts. H. 580mm
\$400 – \$800

665. John Crawford
Earthenware horse form. H. 550mm
\$300 – \$500

666. John Roy
Earthenware anthropomorphic vessel with pierced cruciform decoration. H. 360mm
\$250 – \$500

667. Potter unknown
Large stoneware bowl with jun type glaze. D. 310mm
\$50 – \$100

668. Warren Tippet [attributed]
Large stoneware lidded floor pot with tenmoku glaze. H. 460mm x D. 510mm
\$400 – \$800

669. Peter Alger
Ovoid lidded pot with shino glaze and lug handles to the shoulder. H. 300mm
\$300 – \$500

670. Sandra Black (Australia)
Slip cast urn form with Grecian drapery style decoration. H. 640mm
Sandra Black is one of Australia's foremost ceramic artists. On a number of occasions her work featured in the New Zealand Fletcher Challenge Ceramic awards. In 1988 she won the award and in 1989 a merit award
\$600 – \$1200

671. Geoff Mincham [Australian]
Large earthenware vase with gestural decoration. H. 450mm
\$500 – \$1000

672. Marilyn Wiseman
Large green glazed stoneware candlestick complete with original signed box. H. 640mm
\$400 – \$800



664



670



684

683



661



668

Pottery and Objects from other vendors

A Collection of Len Castle bonsai pots made in the late 1950's for Ruby Smith for the Floradale Tea garden in Titirangi

- 673. Len Castle
Large stoneware bonsai pot with coprosma
\$250 – \$400
- 674. Len Castle
Large bonsai pot with gardenia
\$250 – \$400
- 675. Len Castle
Stoneware bonsai pot with gardenia
\$200 – \$300
- 676. Len Castle
Stoneware bonsai coprosma [small rim chip]
\$150 – \$250
- 677. Len Castle
Stoneware bonsai pot with silver birch [small rim chip]
\$150 – \$200
- 678. Len Castle
Conical earthenware bowl, red lava glaze, impressed initials to the base. D. 390mm
\$800 – \$1200
- 679. Two small Cera ware plaques with Maori rock art design.
\$30 – \$50
- 680. Doreen Blumhardt
Heaven, Man, Earth
Sculptural installation, multiple parts, stoneware and wood. Circa 1999
\$5000 – \$7500
- 681. Guy Ngan
Untitled sculptural form, green variegated bronze issuing from a marble plinth. H. 960mm
\$2500 – \$3500
- 682. Nicholas Ngan
Conjunction No. 3. Cast bronze No 3/5, 1987 signed and with original label affixed to the base. H. 370mm
\$2000 – \$3000
- 683. Levi Bergstrom
Long handled hand carved wooden spoon. L. 320mm
\$200 – \$400
- 684. Levi Bergstrom
Kahikitea hand carved spoon with original bone tag inscribed with title, wood and date (23/12/76)
\$200 – \$400
- 685. Levi Bergstrom
Small scoop in Puriri with original bone tag inscribed with title, wood and date (probably 1981)
\$100 – \$200



653



660



687

- 686. Len Castle
Large earthenware hemispherical bowl with red lava glaze. Impressed initials to the base. D. 390mm
\$800 – \$1200
- 687. Len Castle
Inverted Volcano
Earthenware vase with blue glazed interior. This is one of very few early examples of the inverted volcano form. L. 850mm
Provenance: Len Castle family collection
\$1500 – \$3000
- 688. Len Castle
Stoneware hanging form. D. 180mm
\$300 – \$400
- 689. Len Castle
Two small Pacific series bowls, one with blue glazed well the other with green. Impressed potter's initials to the base of each.
\$100 – \$200
- 690. Len Castle
Stoneware lipped bowl with textured exterior and alkaline blue glazed well. Impressed initials to the base. D. 220mm
\$350 – \$500
- 691. Alan Ross
Stoneware slab form pierced with a T-shape to the middle. Impressed mark. H. 355mm
\$100 – \$200

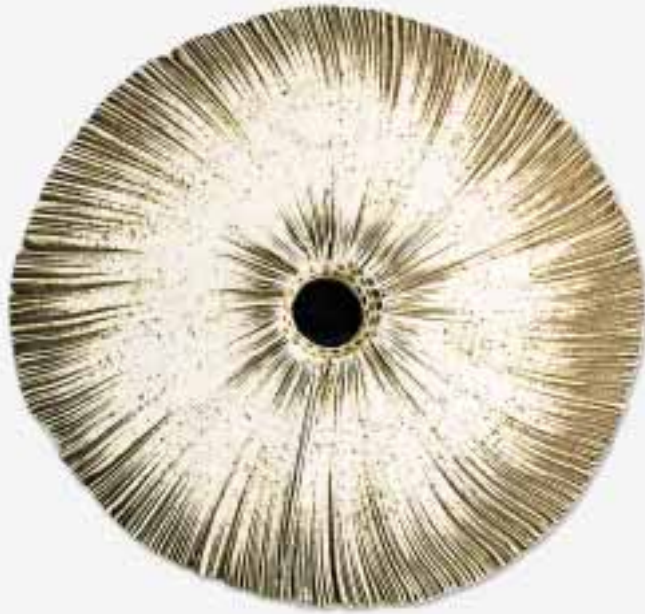


688

- 692. Alan Ross
Raku fired spear, mounted on a plinth. Impressed mark. H. 265mm
\$100 – \$200
- 693. Scott McFarlane
Small pottery plaque inscribed 'Bye Bye Love'. H. 95mm
\$40 – \$80
- 694. Darryl Frost
Wood fired stoneware heart shaped wall hanging, incised 2008. W. 195mm
\$100 – \$200
- 695. Georgina Caulton
'Tank Head Robot', stoneware, incised mark. L. 135mm
\$50 – \$100



696. Gina Fergusson
Two wool lambs brooches and knitted path
\$70 – \$120
697. Elena Renker
Large stoneware shino glaze bowl. Impressed mark. D. 305mm
\$100 – \$200
698. Mirek Smisek
Large bowl with cut and incised rim, cover with light brown and blue glaze. D. 250mm
\$300 – \$500
699. Kate Fitzharris
With Open Arms, ceramic and wool figure. H. 140mm
\$500 – \$800
700. Justine Fletcher
Ellen's Dirt, wool and found objects necklace
\$80 – \$120
701. Cheryl Oliver
Run №4, black and grey stained porcelain, with impressed mark and initials. L. 250mm
\$150 – \$300
702. Paul Maseyk
Tall slightly ribbed stoneware cup painted with white abstract decoration, signed. H. 130mm
\$40 – \$80
703. Anneke Borren
Black, White, Dementia Pair
stoneware and porcelain vases, painted mark to the base of the white vase
Anneke made this pair of vases in 2012 while caring for her mother who suffered from dementia. She describes them as, "the blackness of the loss of memory – the white of the essence of personality left, – sideways, the shape of our brain; and the small opening left, to communicate; the two halves of life".
H. 185mm
\$200 – \$300
704. John Parker
Dark Red Orb, porcelain grooved vase, covered with a rich red glaze. Impressed signature, initials and number IX. H. 215mm
\$200 – \$400
705. Elaine Marland
Water Nymph, stoneware salt glaze sculpture. H. 215mm
\$80 – \$120
706. Doreen Blumhardt
Stoneware spade vase covered with olive green and dark red flambé glaze. Original label to the base. H. 240mm
\$300 – \$500
707. Katherine Smyth
Stoneware textured vase. Incised signature. H. 320mm
\$50 – \$100
708. Sue Scobie
Stoneware and porcelain vase, coloured oxides, incised mark.
This vase was exhibited in Ceramicus 2010, 20 August – 5 September 2010, Wellington Potters' Association annual exhibition, in which Sue Scobie was awarded the Premier Award and the People Choice Award.
H. 200mm
\$100 – \$200
709. John Roy
Here 2008, earthenware model of a hare with textured surface. Impressed mark and painted signature. L. 150mm
\$80 – \$120
710. Len Castle
Sea Secret with blue alkaline glazed interior. Impressed initials. D. 245mm
\$500 – \$800
711. Mal Sole
Stoneware lidded celadon pot with koru knob. Impressed mark. H. 160mm
\$30 – \$50
712. Katherine Smyth
'Fig', handbuilt stoneware jug with painted surface. Signed. H. 195mm
\$400 – \$800



713. Chris Weaver
'Made to Measure Bucket', stoneware white glazed vase with mounted wood handled depicting a tailor tape measure. Impressed mark. H. 155mm overall
\$100 – \$200
714. Paul Meltzer
Small woodfired stoneware vase with ash glaze. H. 125mm
\$30 – \$50
715. Amber Smith
Earthenware vase painted with skulls and crosses. H. 110mm
\$30 – \$50
716. Mia Hamilton
'Hope', large black stained unglazed porcelain bowl with incised inscription 'Lost, lost, lost [...], hope' to the interior. D. 360mm
\$100 – \$200
717. Hei tiki, pounamu inanga variety with cut paua shell eyes
\$1000 – \$1500
718. A large New Zealand rimu and rewarewa floor vase. H. 900mm
\$100 – \$200
719. Gary Nash
Blue glass vase, signed. H. 200mm
\$30 – \$50
720. Gary Nash
Mottled red and orange cased glass vase, signed. H. 250mm
\$50 – \$100
721. Peter Collis
Ovoid ceramic vase with applied gold leaf, signed. D. 220mm
\$30 – \$50

722. Chip Scarborough
Pulled amber and milk glass rod with clear casing, signed. L. 670mm
\$250 – \$300
723. Juliet Peter
Three piece stoneware tea set
\$50 – \$100
724. Roy Cowan
Large ovoid vase decorated with geometric and sun motifs in blue and brown slat glaze. Incised initials. H. 350mm
\$400 – \$800
725. Arnaud Barraud
Stoneware wine bottle and six goblets together with a large stoneware casserole dish and a John Parry oil bottle with cork stopper (3)
\$50 – \$100
726. Don Thornley
Stoneware vase, ash glaze with painted gestural decoration. H. 270mm
\$30 – \$50
727. Yvonne Rust
Spice tree vase, ash glaze with ten compartments with cork stoppers. H. 360mm
\$100 – \$200
728. Stoneware tenmoku glazed coffee pot together with another stoneware coffee pot and a tenmoku glazed jug (3)
\$100 – \$200
729. Australian art glass vase. H. 200mm
\$20 – \$40
730. Ray Rogers
Large floor vase with barium blue glaze. Impressed potters initials to the base. H. 550mm
\$400 – \$600



731. Len Castle
Stoneware bottle vase with barium blue glaze. Impressed initials to the base. H. 290mm
\$300 – \$400
732. Len Castle
Stoneware brush pot, cylindrical shape with textured surface with red and brown ash glaze, unglazed to the base. Impressed initials. H. 250mm
\$300 – \$400
733. Len Castle
Large stoneware dish with Japanese impressed decoration. Impressed initials. Repaired hairline crack. L. 410mm
\$300 – \$500
734. Len Castle
Stoneware dish with ash and tenmoku glaze. Impressed initials. L. 400mm
\$300 – \$500
735. Len Castle
Stoneware dish with shino glaze. Impressed initials. L. 370mm
\$300 – \$500
736. Len Castle
Stoneware platter with incised decoration, ash glaze. Impressed initials to the base. L. 390mm
\$300 – \$500
737. Len Castle
Two stoneware sedge grass holders, umber pigmented with multiple apertures piercing the surface (2)
\$50 – \$100
738. Peter Collis
Earthenware bowl raised on four legs with rich blue glaze. D. 280mm
\$50 – \$100

750



739. Don Thornley (attributed)
Stoneware dish with rolled lip, ash and
tenmoku glaze. L. 270mm
\$20 – \$40

740. Graeme Storm
Stoneware pedestal bowl with barium blue
glaze. D. 140mm
\$80 – \$120

741. David Brokenshire
Two porcelain flower form bowls (2)
\$50 – \$100

742. Peter Stichbury
Early stoneware cylindrical vase, tenmoku glaze
to the upper section the lower section with
matte brown glaze. H. 260mm
\$100 – \$200

743. Mirek Smisek
Salt glazed vase with lug handles. H. 270mm
\$500 – \$600

744. Stoneware trivet with impressed floral design.
L. 280mm
\$50 – \$100

745. Margret Milne
Ovoid stoneware vase. H. 230mm
\$50 – \$100

746. Stoneware chawan (tea bowl)
\$20 – \$40

747. Chris Weaver
White glazed teapot with side handle, together
with another teapot (potter unknown)
\$100 – \$200

748. Earthenware mug with lion red insignia.
H. 140mm
\$50 – \$100

749. Len Castle
Stoneware slip glazed dish with abstract
design. D. 130mm
\$200 – \$300

750. Warren Tippett
Ceramic bowl inset with coloured shells raised
on a metal stand (1992). D. 580mm
\$400 – \$700

751. Steve Fulmer
Large ovoid earthenware vase. D. 430mm
\$200 – \$400

752. Justin Gardner
Large stoneware wall plate with tenmoku glaze
and wax resist decoration. D. 390mm
\$30 – \$60

753. Roger Brittain
Stoneware lidded pot painted with a flowering
tree. H. 230mm
\$150 – \$300

754. New Zealand kauri carved driftwood bust
raised on a wooden base. H. 350mm
\$200 – \$300

755. B.S. Webb
Large turned kauri bowl inlaid with paua and
mother of pearl. D. 440mm
\$150 – \$250

756. Len Castle
Making the Molecules Dance hardback book,
Ron Sang Publications. Signed by Len Castle
and dated 2011
\$150 – \$200

701



713



581

Early Studio Pottery

757. Briar Gardiner
Two trough vases
\$80 – \$120

758. Briar Gardner
Large green glazed trough
\$100 – \$200

759. Olive Jones
Blue glazed vase together with a yellow glazed
vase
\$100 – \$200

760. Olive Jones
Blue/grey glazed ovoid vase
\$80 – \$120

761. Olive Jones
Brown glazed bowl and blue glazed bowl
\$30 – \$50

762. Olive Jones
Small blue glazed vase together with an
unidentified green glazed vase with incised A.T.
to the base
\$30 – \$50

763. Molle
Trough vase together with two other Australian
pottery trough vases and a green glazed vase
(4)
\$50 – \$100

764. A Crown Lynn mottled blue vase over painted
with flowers together with another Crown Lynn
vase with moulded flower decoration
\$30 – \$50

765. Danico pottery vase with floral decoration
together with a Royal Copenhagen hand
painted bowl
\$30 – \$50

766. Australian pottery wall pocket together with an
Australian pottery trough vase
\$40 – \$60

Absentee bid form

Auction No. 80

New Collectors Art
24 June 2014
(lots 1–233)

**EX 23 Archive Collection, The Chester Nealie
Book Fundraising Auction, Furniture and
Decorator Items, Ruth Butterworth Collection**
26 June 2014
(lots 400–766)

This completed and signed form authorizes ART+OBJECT to bid on my behalf at the above mentioned auction for the following lots up to prices indicated below. These bids are to be executed at the lowest price levels possible.

I understand that if successful I will purchase the lot or lots at or below the prices listed on this form and the listed buyers premium for this sale (15%) and GST on the buyers premium. I warrant also that I have read and understood and agree to comply with the conditions of sale as printed in the catalogue.

Lot no.	Description	Auction Date	Bid maximum (New Zealand dollars)
_____	_____	_____	_____
_____	_____	_____	_____
_____	_____	_____	_____
_____	_____	_____	_____
_____	_____	_____	_____
_____	_____	_____	_____
_____	_____	_____	_____
_____	_____	_____	_____
_____	_____	_____	_____
_____	_____	_____	_____
_____	_____	_____	_____
_____	_____	_____	_____
_____	_____	_____	_____
_____	_____	_____	_____
_____	_____	_____	_____

Payment and Delivery ART+OBJECT will advise me as soon as is practical that I am the successful bidder of the lot or lots described above. I agree to pay immediately on receipt of this advice. Payment will be by cash, cheque or bank transfer. I understand that cheques will need to be cleared before goods can be uplifted or dispatched. I will arrange for collection or dispatch of my purchases. If ART+OBJECT is instructed by me to arrange for packing and dispatch of goods I agree to pay any costs incurred by ART+OBJECT. Note: ART+OBJECT requests that these arrangements are made prior to the auction date to ensure prompt delivery processing.

Please indicate as appropriate by ticking the box:

PHONE BID

ABSENTEE BID

MR/MRS/MS: _____

SURNAME: _____

POSTAL ADDRESS: _____

STREET ADDRESS: _____

BUSINESS PHONE: _____

MOBILE: _____

FAX: _____

EMAIL: _____

Signed as agreed: _____

To register for Absentee bidding **this form must be lodged with ART+OBJECT by 2pm** on the day of the published sale time in one of three ways:

1. Fax this completed form to ART+OBJECT +64 9 354 4645
2. Email a printed, signed and scanned form to: info@artandobject.co.nz
3. Post to ART+OBJECT, PO Box 68 – 345 Newton, Auckland 1145, New Zealand

Conditions of sale

Please note: it is assumed that all bidders at auction have read and agreed to the conditions described on this page. ART+OBJECT directors are available during the auction viewing to clarify any questions you may have.

1.

Registration: Only registered bidders may bid at auction. You are required to complete a bidding card or absentee bidding form prior to the auction giving your correct name, address and telephone contact + supplementary information such as email addresses that you may wish to supply to ART+OBJECT

2.

Bidding: The highest bidder will be the purchaser subject to the auctioneer accepting the winning bid and any vendor's reserve having been reached. The auctioneer has the right to refuse any bid. If this takes place or in the event of a dispute the auctioneer may call for bids at the previous lowest bid and proceed from this point. Bids advance at sums decreed by the auctioneer unless signaled otherwise by the auctioneer. No bids may be retracted. The auctioneer retains the right to bid on behalf of the vendor up to the reserve figure.

3.

Reserve: Lots are offered and sold subject to the vendor's reserve price being met.

4.

Lots offered and sold as described and viewed: ART+OBJECT makes all attempts to accurately describe and catalogue lots offered for sale. Notwithstanding this neither the vendor nor ART+OBJECT accepts any liability for errors of description or faults and imperfections whether described in writing or verbally. This applies to questions of authenticity and quality of the item. Buyers are deemed to have inspected the item thoroughly and proceed on their own judgment. The act of bidding is agreed by the buyer to be an indication that they are satisfied on all counts regarding condition and authenticity.

5.

Buyers premium: The purchaser by bidding acknowledges their acceptance of a buyers premium of 15% + GST on the premium to be added to the hammer price in the event of a successful sale at auction.

6.

ART+OBJECT is an agent for a vendor: A+O has the right to conduct the sale of an item on behalf of a vendor. This may include withdrawing an item from sale for any reason.

7.

Payment: Successful bidders are required to make full payment immediately post sale – being either the day of the sale or the following day. If for any reason payment is delayed then a 20% deposit is required immediately and the balance to 100% required within 3 working days of the sale date. Payment can be made by Eftpos, bank cheque or cash. Cheques must be cleared before items are available for collection. Credit cards are not accepted.

8.

Failure to make payment: If a purchaser fails to make payment as outlined in point 7 above ART+OBJECT may without any advice to the purchaser exercise its right to: a) rescind or stop the sale, b) re offer the lot for sale to an underbidder or at auction. ART+OBJECT reserves the right to pursue the purchaser for any difference in sale proceeds if this course of action is chosen, c) to pursue legal remedy for breach of contract.

9.

Collection of goods: Purchased items are to be removed from ART+OBJECT premises immediately after payment or clearance of cheques. Absentee bidders must make provision for the uplifting of purchased items (see instructions on the facing page)

10.

Bidders obligations: The act of bidding means all bidders acknowledge that they are personally responsible for payment if they are the successful bidder. This includes all registered absentee or telephone bidders. Bidders acting as an agent for a third party must obtain written authority from ART+OBJECT and provide written instructions from any represented party and their express commitment to pay all funds relating to a successful bid by their nominated agent.

11.

Bids under reserve & highest subject bids: When the highest bid is below the vendor's reserve this work may be announced by the auctioneer as sold 'subject to vendor's authority' or some similar phrase. The effect of this announcement is to signify that the highest bidder will be the purchaser at the bid price if the vendor accepts this price. If this highest bid is accepted then the purchaser has entered a contract to purchase the item at the bid price plus any relevant buyers premium.

Important advice for buyers

The following information does not form part of the conditions of sale, however buyers, particularly first time bidders are recommended to read these notes.

A.

Bidding at auction: Please ensure your instructions to the auctioneer are clear and easily understood. It is well to understand that during a busy sale with multiple bidders the auctioneer may not be able to see all bids at all times. It is recommended that you raise your bidding number clearly and without hesitation. If your bid is made in error or you have misunderstood the bidding level please advise the auctioneer immediately of your error – prior to the hammer falling. Please note that if you have made a bid and the hammer has fallen and you are the highest bidder you have entered a binding contract to purchase an item at the bid price. New bidders in particular are advised to make themselves known to the sale auctioneer who will assist you with any questions about the conduct of the auction.

B.

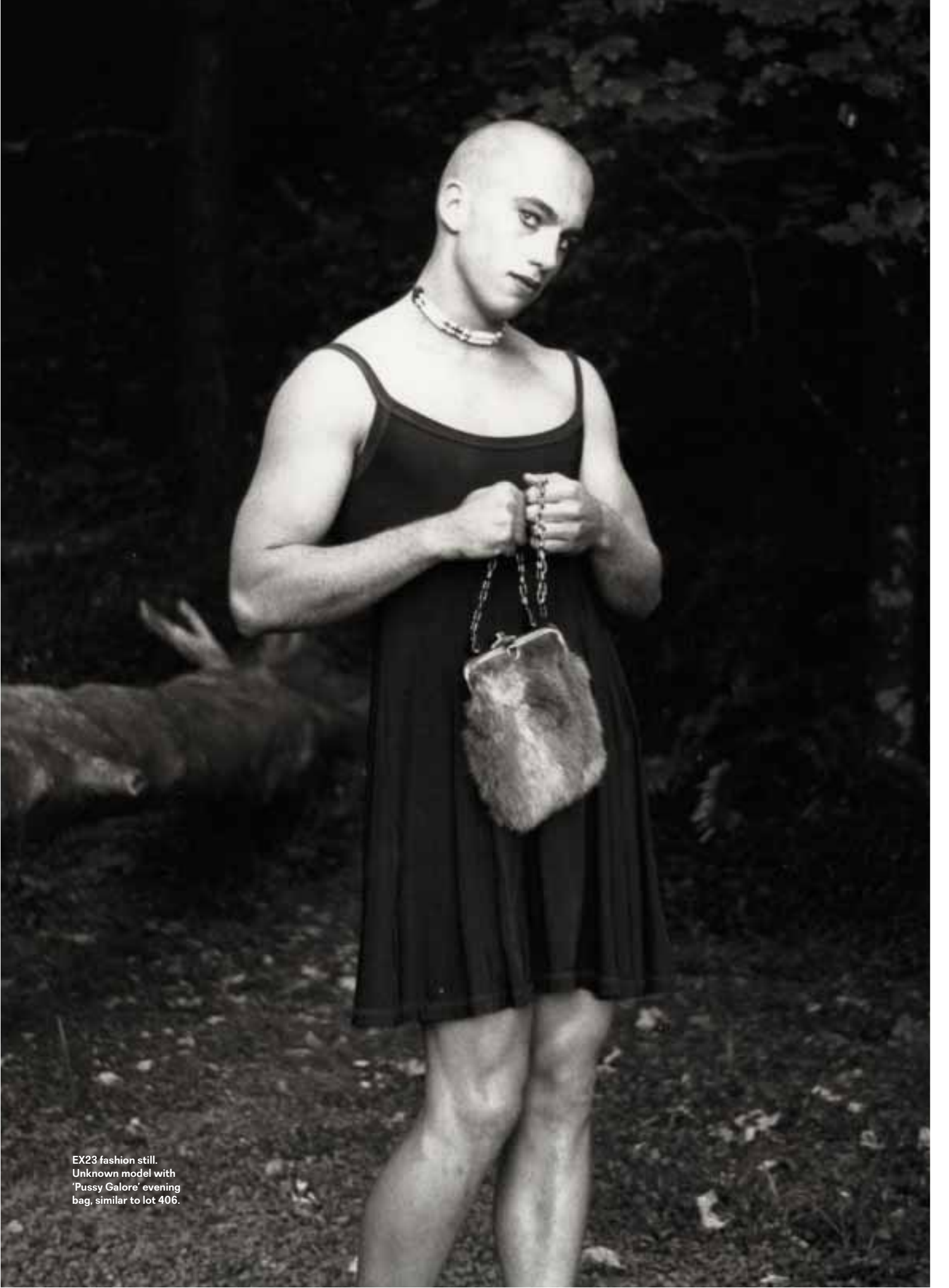
Absentee bidding: ART+OBJECT welcomes absentee bids once the necessary authority has been completed and lodged with ART+OBJECT. A+O will do all it can to ensure bids are lodged on your behalf but accepts no liability for failure to carry out these bids. See the Absentee bidding form in this catalogue for information on lodging absentee bids. These are accepted up to 2 hours prior to the published auction commencement.

C.

Telephone bids: The same conditions apply to telephone bids. It is highly preferable to bid over a landline as the vagaries of cellphone connections may result in disappointment. You will be telephoned prior to your indicated lot arising in the catalogue order. If the phone is engaged or connection impossible the sale will proceed without your bidding. At times during an auction the bidding can be frenetic so you need to be sure you give clear instructions to the person executing your bids. The auctioneer will endeavour to cater to the requirements of phone bidders but cannot wait for a phone bid so your prompt participation is requested.

D.

New Zealand dollars: All estimates in this catalogue are in New Zealand dollars. The amount to be paid by successful bidders on the payment date is the New Zealand dollar amount stated on the purchaser invoice. Exchange rate variations are at the risk of the purchaser.



EX23 fashion still.
Unknown model with
'Pussy Galore' evening
bag, similar to lot 406.



New Collectors Art

Tuesday 24 June at 6.30pm

EX 23 Archive Collection
The Chester Nealie Book
Fundraising Auction
Furniture and Decorator Items
Ruth Butterworth Collection

Thursday 26 June at 6.00pm

