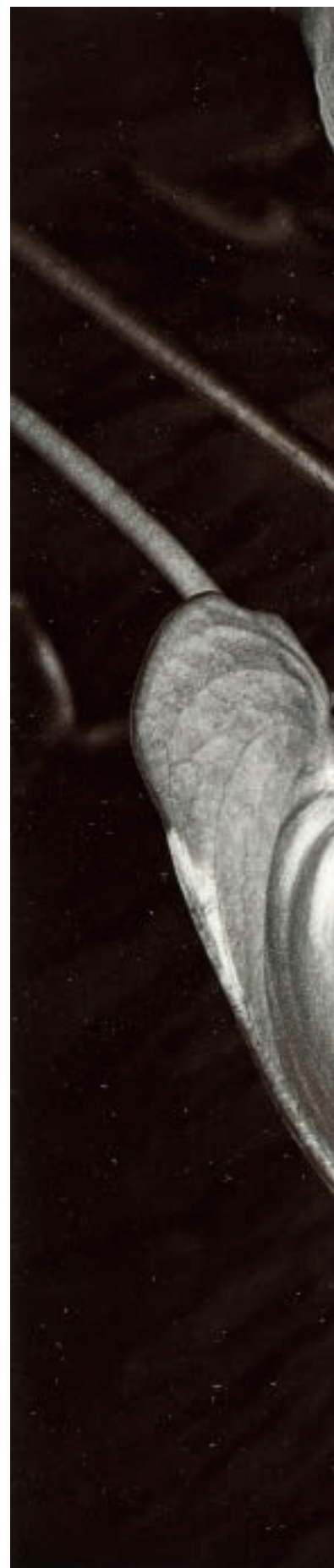


NEW COLLECTORS ART

Wednesday 1 June

DECORATIVE ARTS

Thursday 2 June







Welcome to A+O's mid-year catalogue. From a fine array of New Collectors art that includes both contemporary works and photography by artists as diverse as Star Gossage, Louise Henderson, Harry Wong and Henry Moore, through to exquisite collectables from the collection of the legendary Museum owner Bryan Jackson, this catalogue exemplifies the diversity and delight of collecting in New Zealand. Catalogues such as this are among the most well attended that ART+OBJECT presents and the gallery will be ready for viewing on May 26th – the same day the Auckland Art Fair opens, one of the highlights of the New Zealand art calendar.



3 Abbey Street
Newton, Auckland

PO Box 68 345
Newton
Auckland 1145

Telephone: +64 9 354 4646
Freephone: 0 800 80 60 01
Facsimile: +64 9 354 4645

info@artandobject.co.nz
www.artandobject.co.nz

Furnishings from Mollies Hotel, St Mary's Bay Auckland

Lots 296 to 339 in the current catalogue formerly adorned the interior of the renowned Mollies Hotel in Auckland's St Mary's Bay. For the last two decades Mollies has been a landmark in the locale and the go to destination for upmarket weddings, functions and as well as a discrete hideaway for international celebrity guests including chef Gordon Ramsey and musicians such as Radiohead, Beyonce and Jay Z. The sale of the property earlier this year has meant the closure of the hotel and after decades as a luxury boutique hotel the 19th century grand villa will revert to a private home.

The property was built in the 1870s for the first mayor of Auckland, Archibald Clark, and is believed to have been moved across the road to its present location in the 1930s. After WWII the property operated as the Harbour View Motel for many years until its conversion into Mollies, being the name of the proprietress of the motel for many years. In the 1990s her daughter Frances Wilson-Fitzgerald took over the running of the motel and upgraded the property to become the Mollies we know today. Wilson-Fitzgerald was a well-known figure in musical circles and a dedicated opera coach. Mollies has become synonymous with musical performance and many Aucklanders and guests have enjoyed recitals and performances at the hotel. All of the items in this catalogue come directly from the hotel which was famed for its distinctive interiors that mixed eclectic furnishings with contemporary New Zealand art.

Cover: Lot 104, Leigh Martin,
Loaded (detail). Page 1: Lot 42,
Anne Noble, *Naughty Boys*.

The International

—
9 Princes St,
Auckland 1010,
New Zealand

Freephone 0800 20 20 40
www.theinternational.co.nz

Unparalleled Luxury in the Heart of the City

—
Now selling freehold 1, 2 & 3 bedroom apartments and
exclusive penthouses with stunning park and harbour
views. Experience a new calibre of luxury living today.



IMPORTANT PAINTINGS & CONTEMPORARY ART

7 APRIL 2016

Prices realised include
buyer's premium



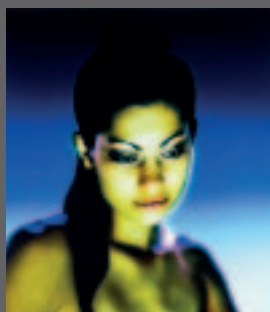
Michael Illingworth
A Matauri Bayscape
oil on canvas
title inscribed, signed and dated '72 verso
\$87 935



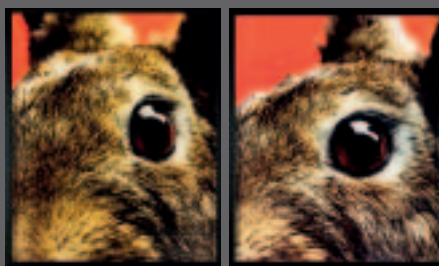
Colin McCahon
Rocks in the Sky, series 2, No. 2:
Lagoon, Muriwai
synthetic polymer paint on
Steinbach laid on board
title inscribed, signed and dated '76
\$298 875



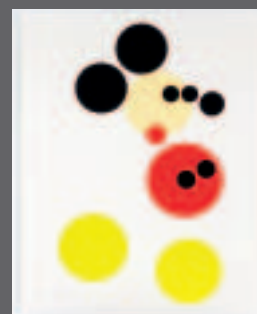
Richard Killeen
Rising and Setting
acrylic and lacquer on aluminium,
nine parts
title inscribed, signed and dated
1979 on each part verso
\$63 315



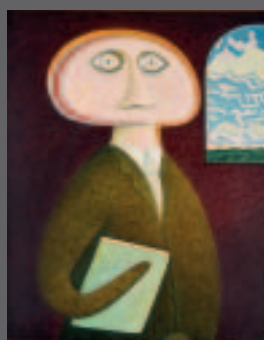
Lisa Reihana
Hinewai
type C print mounted to aluminium,
edition of 5 (2001)
\$14 070



Michael Parekowhai
Craig and Neil Keller
type C photographs, diptych (2010)
\$35 175



Damian Hirst
Mickey (Large)
Silkscreen print in colours with glaze,
printer's proof from an edition of 50, 2014
\$55 105



Michael Illingworth
Portrait of a Man of Consequence
oil on canvas
signed and dated '79 verso
\$70 350



Fiona Pardington
Huia Lover
mural-scale type C print (2005)
\$39 855



Colin McCahon
*Truth from the King Country: Load
Bearing Structures No.1*
synthetic polymer paint on
canvasboard, 1978
\$67 415



HORNABROOK MACDONALD

THE PATH TO SUCCESS.

We are pleased to announce the introduction of a well respected senior Corporate Commercial lawyer, Nigel Burton, as a new Consultant to our firm. With his impressive background in the legal industry we look forward to working with Nigel and are sure you will join us in welcoming him to the HML team.

Reflecting our commitment to rewarding young talent and high level performance, we also take pleasure in announcing the elevation to Associate, of Andrew Thomas. We have no doubt that Andrew will continue to flourish and impress us and his clients.

WWW.HMLAW.CO.NZ



ART + OBJECT

IMPORTANT PAINTINGS AND CONTEMPORARY ART: AUGUST 4TH

ENTRIES NOW INVITED



Bill Hammond
Choreograph Screen
(detail)
acrylic and metallic
pigments on four-panel
wooden screen, 1997
1860 x 1480mm
\$150 000 – \$200 000

Tony Fomison
Self-Portrait No. 14
oil on hessian, 1969
805 x 640mm
\$120 000 – \$160 000

Contact:
Ben Plumbly
ben@artandobject.co.nz
09 354 4646
021 222 8183



A life, and love,
in New Zealand art...

The Tim & Sherrah Francis Collection

7 — 8 September

Contact: Ben Plumbly
ben@artandobject.co.nz
021 222 8183 / 09 354 4646



RARE BOOKS

10 AUGUST, 2016

In the last five years A+O's Rare Books catalogues have offered important New Zealand and international historic publications, maps, photographs, first editions and historical correspondence. A+O's August Rare Books catalogue has already seen a number of important consignments: early New Zealand handwritten documents including a Prospectus of the New Zealand Manukau Land Company circa 1840; notes on the site of the New Zealand capital which lists the main points to be reviewed when selecting the site of the capital of the colony – Auckland vs. Wellington, circa 1840s; a letter dated London 14th August 1838 relating to land under the control of the Rev. William White; an original letter headed the Colonial and Emigration Office dated Park Street, 29th March 1841 in reference to Land Claims in the North Island of New Zealand. Other early consignments of interest include an original Fern Album by renowned Auckland Curio shop owner Eric Craig and ornithological books from the library of Walter Lawry Buller.

Entries invited
for the August 10th
Rare Books catalogue

Contact
Pam Plumbly
Rare Books Specialist
09 354 4646
pam@artandobject.co.nz

RECENT RARE BOOKS AUCTION HIGHLIGHTS

Prices realised include
buyers premium



Sir Walter Lawry Buller
A History of the Birds of New Zealand
2nd edition 1888, in rare original wrappers
Provenance: Tony Keulemans, Great
Grandson of J.G. Keulemans.
\$37 590, August 2015



John Cleveley
Views in the South Seas
complete set of four rare views in aquatint
from Captain Cook's Third Voyage.
[1877–1878]
\$48 500, December 2015



Joshua Reynolds
Joseph Banks Esq after Joshua Reynolds
mezzotint 1774
\$17 500, April 2016



Robert Laurie
"The Poa" (Tui)
mezzotint printed in oil colours, 1776
regarded as New Zealand's rarest print
\$24 250, December 2013



Samuel Charles Brees
Pictorial Illustrations of New Zealand
Rare hand coloured example,
published London 1847
\$8480, December 2015



David Samwell
Narrative of the Death of Captain James Cook
Published London 1786
\$160 000, April 2015



Tom Blake
Hawaiian Surfboard
1st edition, Paradise of the
Pacific Press 1935
\$6910, April 2016



Andrew Thomas
Samoa Album
48 paladium prints dating to the
early 20th century, circa 1905
\$9700, August 2015



Decorative Arts

including furnishings from
Mollies Hotel and selected items
from the Bryan Jackson Museum

Auction

Thursday 2 June at 6.30pm
3 Abbey Street, Newton, Auckland

Viewing

Thursday 26 May, 9.00am – 5.00pm
Friday 27 May, 9.00am – 5.00pm
Saturday 28 May, 11.00am – 4.00pm
Sunday 29 May, 11.00am – 4.00pm
Monday 30 May, 9.00am – 5.00pm
Tuesday 31 May, 9.00am – 5.00pm
Wednesday 1 June, 9.00am – 1.00pm
Thursday 2 June, 9.00am – 1.00pm

Lot 367
William Seuffert
Rare writing compendium
H.420mm x W.365mm x D.230mm
\$20 000 – \$30 000

All lots illustrated at
www.artandobject.co.nz

259



270



271



Bryan Jackson Collection of Music Boxes and Toys

Bryan Jackson had a passion for collecting which began when he was very young and continued until his death in September 2015. He had a talent for finding rare and interesting items, restoring them and keeping the best for his own private collection. Many of these items were on display at his museums, in the 1980s in Mt Wellington and in later years in Devonport where he was a well-known personality.

258



Toys

- 250 Busy Bridge, Louis Marx brand
American tinplate, wind-up toy in good working condition with six vehicles, c. 1930s. L.610mm
\$300 – \$500
- 251 Lincoln Tunnel, Unique Art brand
American tinplate, wind-up toy in sound working condition with six vehicles but missing policeman figure and with later wooden presentation base. L.610mm
\$150 – \$250
- 252 Mickey Mouse, Rheinische Gummi Und Celluloid Fabrik Co. brand
German celluloid, wind-up toy in good condition although right arm attachment is precarious, rare model with five fingers, c. 1930. H.150mm
\$200 – \$400
- 253 Fire Engine with turntable extending ladder, Mettoy brand
British tinplate, clockwork wind-up toy in good condition complete with four fireman figures, c. 1950s. L.390mm
\$125 – \$175
- 254 Fire Engine with extending ladder, Tipp & Co. or similar
German tinplate, clockwork wind-up toy in good condition with two fireman figures (3 missing), c. 1940s/50s. L.450mm
\$150 – \$200

- 255 Ford Fire Engine, Bandai brand
Japanese tinplate, battery operated, friction toy in red in good condition with intact firehose, c. 1960s. L. 320mm
\$100 – \$200
- 256 Novelty Police Car No.5, Modern Toys Nomura brand
Japanese tinplate, battery operated, friction toy in sound condition. L.250mm
\$50 – \$100
- 257 Vintage clockwork Meccano Coupe in red and green. L. 350mm
\$150 – \$250
- 258 Captain Campbell's Blue Bird (short version), Gunthermann brand
German tinplate clockwork racing car in teal blue with powerful mechanism, tin balloon wheels and working brake in good plus original condition, c. 1930s. L.320mm
\$400 – \$600
- 259 'Man Da Rin' Chinese figure in sedan chair carried by two 'Coolies', Lehmann Brand – EPL 565
German tinplate, clockwork wind-up toy in excellent original condition with original box and Lehmann tin marke tag attached. Early variant with coolie figures in blue and chair supports affixed to exterior. A superb example of one of the most complex and delicate Lehmann toys. This example is intact working order and features original details including pigtailed attached, c. 1920s/30s. 150 x 200mm
\$2000 – \$3000



261

260 'Tut Tut' early motorcar and driver, Lehmann Brand – EPL 490
German tinplate, clockwork wind-up toy in excellent original condition with Lehmann marks, operational mechanism, trumpet horn and paper bellows to the underside. USA Patent mark dated May 12 1903 to the rear, c. 1920s/30s. L. 180mm
\$750 – \$1250

261 Gyro–Cycle, Tri-Ang brand (Lines Bros.)
British tinplate and plastic wind-up toy in excellent original condition. Figure in blue and cycle in red with all mechanisms intact in good plus original box inc. instructions and bottle of lubricating oil, c. 1930s. 190 x 210mm
\$300 – \$500

262 Steamboat with circulating monoplanes, Kellerman CKO brand – model no. 226
German tinplate clockwork wind-up toy in good original condition with working mechanism, extremely rare, c. 1920s/30s. L. 235mm
\$200 – \$300

263 Flying Monoplane and Tower, Bing brand
German tinplate clockwork toy in fine original condition featuring plane balanced on a folding counterweighted mechanism
\$200 – \$300

264 Trick Dog Bank, Hubley brand
American cast metal spring loaded coin bank in original operating condition. Base in metallic sky blue with clown figure in white. Impressed to base Pat. July 31 1888 (possibly later copy) L. 220mm
\$200 – \$300

265 Monkey Basketball Player, TPS brand
Japanese tinplate clockwork toy in good working condition with ball and hoop, c. 1950s. L. 200mm
\$50 – \$75

266 Marx Crazy Dancer, Marx brand
British tinplate clockwork toy featuring dancing Goofy and drumming Donald Duck in good semi-working condition, c. 1946. H. 270mm
\$150 – \$250

267 Drumming Monkey, Alps brand
Japanese battery operated mechanical toy in red felt jacket and hat, c. 1950s. H. 245mm
\$50 – \$100

260



275

268 Roaring Gorilla, Masudaya Modern Toys brand
Japanese tinplate, battery operated mechanical toy in good original condition, c. 1950s. H. 250mm
\$70 – \$120

269 Golden Jubilee 'shaking' jalopy, Nomura (TN)/Kosuge brand
Japanese tinplate, battery operated 1910 Ford in red with plastic & celluloid driver figure in good condition, c. 1950s. L. 250mm
\$100 – \$200

270 Vintage pedal car Convertible No.8
Possibly Tri-Ang brand, in cream and blue over pressed steel with chrome detailing, c. 1920s/30s. L. 1030mm
\$500 – \$1000

271 Vintage pedal car Roadster No.10
Possibly Tri-Ang brand, in black and maroon over pressed steel with chrome detailing and four mounted glass headlights, c. 1920s/30s. L. 1110mm
\$750 – \$1250

Vintage Music Boxes and Automatons

272 Cuendet music box (Buffet-style), no. 33085 1892, with four bells of which three with butterfly strickers, the drum with six strickers, playing eight airs listed in the original tune sheet. Good condition.
\$2000 – \$3000

273 Victorian musical photograph album with illustrations of the life and times of Queen Victoria, with German music movement at the back by Junghans playing 4 1/4 in discs. Some damage to the comb of the music box, album in good condition with a black covering over the spine
\$350 – \$400

274 German silver singing bird automaton by Karl Griesbaum, c. 1900, with later London import marks. The rectangular silver case embossed with figural scenes and trophies, operated by a lever on the front which releases an oval cover embossed with cherubs releasing a caged coloured feathered bird. The box is in good condition complete with original key, but the bird is not working. The box, L. 100mm
Provenance: purchased from Cordy's in February 2009
\$1000 – \$2000



- 275 Antique singing bird automaton decorated with coloured enamels and set with sapphires, rubies and seed pearls. The central moving bird in a cage with carved seated figures of women and young child on either side and bochee above of nesting birds, fruit and leafy branches. The base with clock set in the front. In working order, with keys. H. 205mm Provenance: purchased from Cordy's in December 2008. \$10 000 – \$15 000
- 276 Impressive Symphonion 27½in-disc music box, c. 1899, with 12 bells and a 118-note comb and with twelve discs. Set in a deep case with built-in disc storage bin. In excellent working condition but with one broken tooth. Includes 13 discs. H.2500mm W.1100mm \$25 000 – \$35 000
- 277 American Regina 27inch accordion top music box, c. 1897. The large table music box in an ornate original mahogany case with a folding top that opens to take the disc. In good working condition with 16 discs. Provenance: originally purchased by a Dunedin collector from the Bornard Music Box Co., New York, in the mid-1970s; later purchased by the current vendor from Webb's Auctions in 2007. Together with a case with 14 discs \$4000 – \$8000
- 278 French coin activated triple singing bird automaton by Bontems, with traditional brass mechanism with an electric drive on a gold painted pedestal, the three caged birds with moving heads, beaks and tails in a naturalistic setting, in good working order. H. 1400mm Provenance: originally acquired from R. McNeil & Co., 16 Wydon Street, London, c. 1940s-1950s \$1500 – \$2000
- 279 French singing bird automaton by Botems, c. 1880, the cage with the three singing birds on an ornate brass stand, in good working condition. Provenance: Purchased from the Joblin Collection in the 1970s. Jobling toured New Zealand in the early 1920s with a collection of automata models acquired in Europe in the 1890s \$1500 – \$2500
- 280 Edison cylinder Amberola phonograph, in good condition but without the diamond in the reproducer, with approximately 30 cylinder records \$200 – \$300
- 281 Beautiful Polyphon 15½in-disc table music box in type 45 style, with carved and inlaid walnut case, fitted with two Zither type dampers, one on each comb, with fifteen discs. In playing condition but needs some adjustments. It can also play Regina 15½in discs \$2000 – \$3000
- 282 American Regina 15½in-disc music box, with single comb and fifteen discs in good working condition \$2000 – \$3000
- 283 French singing bird automaton with two birds in a brass cage, c. 1920s \$200 – \$300

279



- 284 Singing bird automaton with brass cage, probably German
\$150 – \$200

- 285 Rare French glass dome singing bird automaton with clock, made by Bontems, c. 1890. Arranged on an ebonised base with six birds in a leafy tree, the birds variously move and fly. The dome has been repaired, the spring drive mechanism has been replaced (but still present and could be re-installed) with a gramophone motor and the bird sounding mechanism removed. Provenance: acquired by previous owner at Art+Object in March 2010 and later purchased by the current owner
\$3000 – \$5000

- 286 Small Swiss 8 air music box, no. 41837, made by Mojon Manger, Geneva, Switzerland with a 3½in cyclinder and transfer on lid. In good working condition, but needs some damper adjustments, c.1900
\$400 – \$500

- 287 Large Swiss Music box with organ, no. 819. Not in great condition: one tooth is broken, the tune sheet, the cover over the organ section and two tips on organ levers are missing
\$1000 – \$2000

- 288 Small Polyphon 6½in disc music box with polished walnut case, five discs and box key. Needs adjustments, c.1895
\$800 – \$1200

289



- 289 French musical automaton girl with bird in basket, by Leopold Lambert, c. 1900, the doll marked SFBJ 60 Paris. The bisque-headed girl has blue glass eyes, open mouth, blonde mohair wig, bisque arms and hands and composition torso and legs, she is holding a basket containing a feathered bird. The head turns from side to side and up and down, the left arm moves up and down and the basket lid revealing the bird also moving, the right arm moves up and down to smell a bunch of flowers. The automaton has two tunes listed on a tune sheet under the base which are difficult to read. It has a key cast with the letters LB, the trademark of Leopold Lambert. The piece works well but the flowers are missing and the bird movement needs attention
\$2000 – \$3000

- 290 Two small grand piano jewellery boxes with musical movements, playing three short tunes when the lid is lifted
\$200 – \$300

- 291 Victorian coin-operated singing bird automaton in working order
\$200 – \$400

- 292 Paillard PVF music box
An 8 air Swiss music No10014 c.1882. Operational but needs some adjustment
\$300 – \$500

283



292



281



- 293 Rare American Child's barber chair made by Theo A Kochs company. The chair was used for many years in Monty Winters salon in the Smith & Caughey building in Auckland. H.1100mm
\$400 – \$800

- 294 French vitrine with glazed panelled doors. The lower section painted with a gentleman serenading a lady in a forest glade flanked by painted panels, raised on tapering legs with gilt brass mounts H.1430mm
\$500 – \$800

- 295 French Kingwood vitrine with bow fronted glazed door enclosing three shelves. The front panel painted with a courting couple raised on tapering legs. The whole embellished with ormolu mounts H.1700mm
\$800 – \$1200



Furniture & furnishings from Mollies Boutique Hotel Auckland

296 Set of four Bonagina outdoor chairs
\$200 – \$400

297 Italian stone and marble table the circular top inlaid with various coloured marble panels, raised on tapering legs from a shaped platform base. Originally purchased from the Ralph Lauren Showroom in New York by the original Mollies owners. D. 1200mm H. 900mm
\$1000 – \$2000

298 Antonio Citterio for B & B Italia "Harry" sofa in white cloth upholstery
\$1000 – \$2000

299 Frans Van Der Heijden and Kate Hume Bird man table in black veneer over solid oak. L.2500mm W.900mm
\$1200 – \$2000

300 19th century walnut couch with scroll back, the red cloth upholstery decorated with classical figures
\$300 – \$500

301 Italian Games table the removable top opening to reveal sliding panels and roulette wheel W. 780mm
\$100 – \$200

302 Victorian three seater sofa with cameo back raised on cabriole legs
\$300 – \$500

303 Chi Wing Lo for Giorgetti Italian brown leather wingback chair with swivelling seat with matching foot stool
\$300 – \$500

337



304 G-Plan 1970s teak framed three-piece lounge suite with brown vinyl cushions
\$800 – \$1200

305 Nontreux, three-piece roll arm, modular leather lounge suite. L.2900mm
\$1400 – \$1800

306 Early 19th century tan leather upholstered armchair raised on tulip form front legs
\$800 – \$1200

307 Chinoiserie cabinet with brass grill panelled doors. W. 760mm
\$200 – \$400

308 19th century Dutch elm table with circular top raised on three splayed legs. D.1300mm
\$500 – \$800

309 18th century walnut lowboy with three frieze drawers raised on barley twist legs united by a shaped stretcher base. W. 900mm
\$800 – \$1200

310 Oak gate leg table with oval top, raised on turned legs united by a stretcher. L. 1200 [extended]
\$400 – \$600

311 Irish pine blanket chest. L. 880mm
\$300 – \$400

312 Chromium plated floor standing candelabra. H. 1500mm
\$100 – \$200

313 Baltic pine chiffonier with upstand back, a single shelf and single frieze drawer above panelled cupboards. W. 930mm
\$600 – \$800

314 18th century Italian apothecary chest raised on a later stand. W. 900mm H. 1100mm
\$2000 – \$3000

315 19th century French fruitwood dining table with single frieze drawer raised on turned legs L. 2000mm
\$1200 – \$1500

316 French provincial fruitwood kitchen table with sliding panel and single frieze drawer, raised on turned legs. W. 1670mm
\$1000 – \$1500



- 317 Georgian mahogany pianoforte by John Broadwood and Sons raised on turned legs with brass casters
\$1000 – \$1500
- 318 Tom Dixon for Cappellini S chair with dark lacquered metal frame covered in woven marsh straw
\$100 – \$200
- 319 Set of ten Danish side chairs with patterned blue velour upholstery
\$600 – \$800
- 320 Pair of giltwood fauteuil Louis XV style chairs with floral tapestry upholstery
\$3200 – \$3600
- 321 Chinese lacquer nest of three tables decorated with figures in a garden setting
\$200 – \$300
- 322 A good decoratively painted 18th century chinoiserie chest on stand with numerous small drawers raised on tapering legs. W. 840mm
\$3500 – \$500
- 323 Decoratively painted 19th century corner cabinet with architectural pediment. H. 1200mm
\$1500 – \$2000
- 324 Provincial Chinese wooden bucket with iron binding. H. 870mm
\$100 – \$200
- 325 Gilt framed over mantle mirror. L. 1040mm
\$100 – \$200
- 326 Gilt framed over mantle mirror, the frieze decorated in low relief with a hunting scene. L. 1200mm
\$400 – \$800

- 327 Regency style table with splayed legs painted black with decorative gilt highlights and glass top. L. 1600mm
\$200 – \$300
- 328 Gilt framed over mantle mirror with ribbon pediment. H. 1600 W. 1200
\$200 – \$400
- 329 Large decorative 19th century overmantle mirror with decorative foliate carving. W. 1600 H. 1840mm
\$2000 – \$3000
- 330 Overmantle mirror with decorative gilt and white painted decoration. H. 1750 W. 1100mm
\$500 – \$800
- 331 An impressive over mantle mirror with urn and architectural pediment above a pierced foliate frieze and engaged columns. H. 1700 W. 1250mm
\$4000 – \$5000
- 332 Overmantle mirror with carved wooden frame. Some damage. H. 1780 W. 900mm
\$200 – \$300
- 333 Pair of decorative brass mirrors. H. 940 W. 460mm
\$400 – \$600
- 334 A decoratively painted Venetian panel. 2170 x 1900mm
\$200 – \$4000
- 335 A decoratively painted Thai panel. 1300 x 680mm
\$200 – \$400
- 336 19th century gilt framed oil on canvas of two anglers on a riverbank. 380 x 550mm
\$200 – \$400

- 337 19th century gilt framed oil on canvas of a woman gathering firewood beside a river. 500 x 740mm
\$200 – \$400
- 338 19th century Continental oil on canvas of figures in a landscape setting with castle and waterfall. 630 x 740mm
\$200 – \$400
- 339 19th century Anglo/Indian oil on canvas landscape with procession of figures in front of palace 500 x 650mm
\$100 – \$200





Maori Art and items of New Zealand interest

- 340 An important 19th century Kahu Kiwi cloak. The muka Kaupapa (surface) woven using double pair twining with a kiwi feather border on all sides. Kiwi feathers are attached in groups of three or four feathers in regular spacings to the central body of the cloak to create a decorative finish. Running stitches of red wool and black dyed muka along each side, the neck border with a rolled finish terminated by decorative thrum fringe to each end. Provenance: Gifted to Lewis Francis Paul Taylor (1909 -1997) who was created an honorary Rangitira, Ngati Toa (Young Maori club 1937 – 1948) in recognition of his skills as a carver in his own right. Later to become the decorated Wing Commander and former Director of Civil Aviation, New Zealand and the survivor of an horrific Gypsy Moth plane crash (1932). Y10959, 855 x 1130mm \$18 000 – \$24 000
- 341 A large and impressive argillite stone tiki. Y16332. L.310mm \$1000 – \$2000
- 342 Pounamu Hei-Tiki, kawakawa variety with hands to thighs and tilted head. Y17543 Provenance: Passed on by family descent from Sir George Grey and Annie Matthews \$1000 – \$2000
- 343 Mere Pounamu with elongated blade and suspension hole at the handle, concentric groove at the butt of the handle. Y17507. L.300mm \$1000 – \$2000
- 344 Carved hoe (paddle) of typical form with slender blade. Y16358 \$400 – \$800
- 345 Stone sinker with lashing groove. Y17542 \$50 – \$100
- 346 An early 20th century waka huia (treasure box). The handle presents mirrored tekoteko figures connected at the head above carved wheku heads with inset paua shell eyes. The bowl supported on two humanistic forms with tongues extended and full moko and carved with rauru spirals and triple haehae. Y4073 \$6500 – \$8000
- 347 Carved wood patu \$200 – \$300
- 348 Carved wood patu \$200 – \$300
- 349 Four tiki. Y4752, Y4754, Y4755, Y4756 \$100 – \$200
- 350 Carved Maori Pou post, the ancestral figure with ta moko and paua shell eyes. The body with decorative haehae carving and with three fingers clasped together at the abdomen. Y17541. H.1480mm \$3000 – \$4000
- 351 Waka Kereru (pigeon trough) of rectangular shape. Y17544. L.620mm \$300 – \$400
- 352 Five assorted tiki. Y13775, Y13682, Y13696, Y13695, Y13694 \$100 – \$200
- 353 Two tiki. Y14676, Y14683 \$40 – \$80
- 354 Carved Maori tokotoko, the handle with a tiki figure with inlaid paua shell eyes. L.90mm \$150 – \$250
- 355 Manatunga (Maori for Keepsake) blanket decorated with a Poutama – stairway to heaven pattern in red and black. Original label attached \$200 – \$500
- 356 Manatunga (Maori for Keepsake) blanket with a tukutuku panel design in red, black, yellow and white. Original label attached \$400 – \$600



- 363 A.R.D Fairburn
Framed and mounted hand stamped fabric with Maori rock art drawings after Theo Schoon.
Provenance: Fairburn family collection
700 x 1150mm
\$2000 – \$4000
- 364 A.R.D Fairburn
Framed and mounted hand stamped fabric with Maori rock art drawings after Theo Schoon.
Provenance: Fairburn family collection
810 x 670mm
\$2000 – \$4000
- 365 A.R. D Fairburn
A rare pair of curtains, hand stamped with Maori rock art drawings after Theo Schoon
Provenance: Fairburn family collection. Each
1900 x 800mm
\$2500 – \$3500
- 366 A cased set of ten Huia feathers
\$8000 – \$10 000



- 357 Te Ariki travel rug with a tukutuku panel design in unusual colours of blue, white and purple. Original label attached
\$400 – \$600
- 358 Manatunga travel rug with a tukutuku panel design in blue, green and white. Original label attached
\$250 – \$500
- 359 Te Ariki travel rug decorated with a poutama – stairway to heaven pattern in brown and white. Original label attached
\$400 – \$600
- 360 Manatunga travel rug decorated with a poutama – stairway to heaven pattern in orange, black, white and yellow
\$400 – \$600
- 361 Manatunga travel rug with a tukutuku panel design in green, white, blue and black. Original label attached.
\$400 – \$600
- 362 A.R.D Fairburn
Hand stamped curtain with Maori rock art designs after Theo Schoon.
Provenance: Fairburn family collection.
L.2370mm x W1160mm
\$2000 – \$3000





- 367 William Seuffert
Rare writing compendium
Composed of specimen native timbers with traditional European parquetry and New Zealand marquetry flora, fauna and indigenous Māori themes, made by William Seuffert in 1905.

Depicting Auckland with Rangitoto and the Waitemata Harbour and with an inlaid Kiwi, also with the initials 'FSB', dated 1905 and 'N.Z.' inlaid. Featuring manuka flowers and basket-weave parquetry in rewarewa with spiral and scrolling Maori motifs including the spiral waka prows (tauihu) that frame the scene. The interior with a gilded leather writing surface. The marquetry timbers include rimu, puriri, rewarewa, burr totara and tawa. (Illustrated on page 62)
H.420mm x W.365mm x D.230mm
\$20 000 – \$30 000

- 368 Anton Seuffert
Parquetry floral pattern card table. The top inlaid with a complex fern and clematis design on a basket weave rewarewa ground raised on a bobbin turned base. Original 'A Seuffert cabinet maker' label affixed to the underside. D.610mm
\$15 000 – \$20 000

- 369 Rare Sherwin and Cotton portrait tile by George Cartlidge depicting a portrait of the Ngati Maru chief Matene Te Nga.
220 x 120mm
\$500 – \$1000

- 370 Large Cera ware enamel over copper plaque featuring Maori cave art designs after Theo Schoon.
360 x 220mm
\$200 – \$400

- 371 Frank Carpay for Crown Lynn
Handwerk plate hand painted in blue and white with a vase spilling forth a profusion of flowers
D.230mm
\$150 – \$250

- 372 Two Papua New Guinea masks
\$100 – \$200

- 373 Papua New Guinea Sepik river crucifix.
H.830mm
\$100 – \$200

- 374 Papua New Guinea Sepik river crucifix.
H.830mm
\$100 – \$200

- 375 Fijian priests dish carved in the form of a figure
\$200 – \$300



369



363

386



388



- 376 Pair of B&B Italia black leather arm chairs
\$800 – \$1200
- 377 Black leather upholstered sling chair and
matching footstool
\$500 – \$800
- 378 1950S Parker teak dining suite with six chairs
with mauve vinyl upholstery
\$1500 – \$2500
- 379 Flos Skygarden S1 pendant lamp,
hemispherical with russet coloured exterior
\$1000 – \$1500
- 380 David Trubridge
Body raft 1998 Steam bent wych elm with
pegged joints
\$1500 – \$2500
- 381 Pair of 1950s armchairs with red vinyl
upholstery
\$1200 – \$1500
- 382 David Trubridge
Treasure box in tanekaha (ash) with inset
pounamu disc to the top. W.290mm
\$100 – \$200
- 383 David Trubridge
Three small treasure boxes in tanekaha
\$50 – \$100
- 384 Pair of industrial black metal lamps
\$100 – \$200

- 385 Garth Chester
Set of four dining chairs, plywood framed with
original vinyl upholstery
\$2000 – \$3000
- 386 Grant Featherston
A310 space chair with red vinyl upholstery
\$3000 – \$3500
- 387 Arco floor lamp issuing from a marble base
\$1200 – \$1800
- 388 Jon Jansen
Wingback chair. Teak framed with boomerang
form legs, reupholstered in a blue cloth
upholstery
\$1500 – \$2000
- 389 Vintage Tulip dining table and five chairs in the
manner of Eero Saarinen. D.1530mm
\$1500 – \$2500
- 390 Memphis style coat rack, painted red and
black. H.1660mm
\$200 – \$300
- 391 Jose Bribiesca
Rare Chess Set 32 pieces in chromed
steel with coloured and inset Perspex
on glass chessboard Individual pieces of
variable dimensions, height of tallest 73mm.
Chessboard measures 405 x 405mm
\$1400 – \$2000

- 392 1960s coffee table with tile top.
750 x 580mm
\$100 – \$200
- 393 Keith Murray for Wedgwood
Ceramic dish with matt green glaze, impressed
KM and Wedgwood mark to the base and in
original box. D. 205mm
\$200 – \$300
- 394 Keith Murray for Wedgwood
Lemonade set with cream glaze, comprising
a tall jug and six mugs, printed KM and
Wedgwood factory mark. H. 225mm max
\$200 – \$300
- 395 Keith Murray for Wedgwood
Tapering vase in matt yellow glaze with foliate
rim and sides, printed KM and Wedgwood
factory mark. H. 230mm
\$600 – \$800
- 396 Keith Murray for Wedgwood
Spherical vase with lathe turned bands in
matt yellow glaze, printed KM and Wedgwood
factory mark. H.155mm
\$400 – \$600
- 397 Piero Fornasetti for Rosenthal
Julia Temi e Variazioni Motiv 13 collector plate,
printed mark to the base. D. 235mm, in box
\$300 – \$500

New Zealand pottery

381

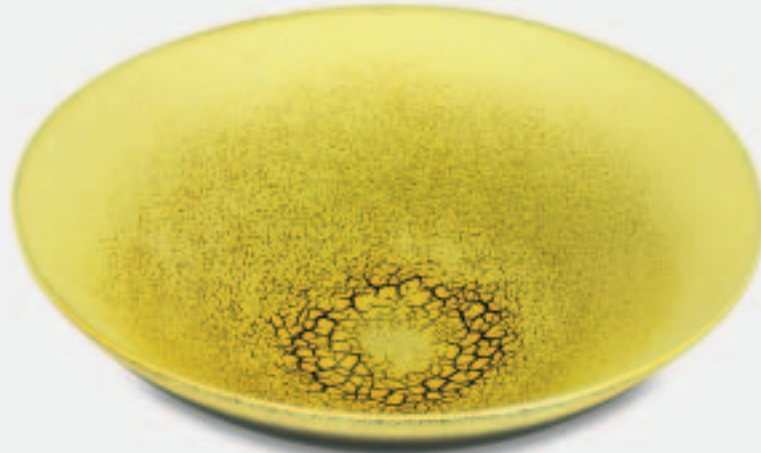


410



- 398 Curtis Jere
Cool cast and welded mixed metal sculpture of a small sailing boat anchored in a large rough-cut quartz plinth, signed. H. 540mm
\$400 – \$600
- 399 Eames style lounge chair and matching ottoman with black leather upholstery and rosewood shell
\$800 – \$1200
- 400 Large 1930s Woods industrial fan with telescopic mechanism, raised on a blue powder coated steel three-point base. Height variable
\$500 – \$800
- 401 Blown art glass vase with a red crackle net on a blue background. H. 345mm
\$50 – \$80
- 402 Decorative brown glass bottle with relief spiralling design and stopper. H. 280mm
\$30 – \$50
- 403 Italian glass vase, together with a multi-coloured glass dish. H. 245mm
\$60 – \$100
- 404 Vicke Lindstrand for Orrefors
Tall blown glass vase, incised mark to the base. H. 310mm
\$100 – \$200
- 405 Ti-Toki Liqueur bottle, modelled as a Maori pou pou figure with original label. H. 260mm
\$80 – \$120
- 406 Paul McCartney *New world* tour poster. 600 x 400mm
\$50 – \$100
- 407 Al Pacino *Dog Day Afternoon* vintage movie poster. 750 x 1000mm
\$50 – \$100
- 408 David Bowie *The Man Who Fell to Earth* movie poster
\$50 – \$100
- 409 Two vintage movie posters – *Chariots of Fire* and *Black Emmanuelle*
\$50 – \$100

460



- 410 Len Castle
Rare Crater Lake/alkaline pool bowl with unique black glaze to the well, impressed initials to the base. D.470mm
\$3500 – \$5500
- 411 John Parker
Red glazed pottery bowl. D.240mm
\$100 – \$200
- 412 Ernest Shufflebotham for Crown Lynn
Hand potted vase, shape 11 with concentric bands to the mid-section. H.180mm
\$200 – \$300
- 413 Ernest Shufflebotham for Crown Lynn
Hand potted vase, shape 5 with three concentric vase to the top rim. H.190mm
\$250 – \$350
- 414 Ernest Shufflebotham for Crown Lynn
Hand potted vase shape 46. Small chip to the foot rim
\$50 – \$100
- 415 Ernest Shufflebotham for Crown Lynn
Hand potted vase shape 18 with three concentric bands to the top rim. H.220mm
\$200 – \$300
- 416 Crown Lynn moulded ovoid white pottery vase with three concentric bands. H.210mm
\$50 – \$100
- 417 Cameo cut glass vase of baluster form raised on a spreading foot, signed Galle. H.230mm
\$200 – \$300
- 418 Cameo cut glass vase of ovoid wasted shape decorated with a scrolling floral design, signed Galle. H.240mm
\$300 – \$400
- 419 Ernest Shufflebotham for Crown Lynn
Hand potted ovoid vase shape 5 with three concentric bands to the upper section
\$150 – \$250
- 420 Keith Murray for Wedgwood
Set of six mugs
\$200 – \$300

- | | | |
|--|---|--|
| <p>421 Peter Collis
Large white ovoid vase with tapering conical top section. H.560mm
\$450 – \$600</p> <p>422 Peter Collis
Ovoid white vase with tapering conical top section. H.360mm
\$200 – \$300</p> <p>423 Peter Collis
Ovoid white vase with tapering conical top section. H.360mm
\$150 – \$200</p> <p>424 Peter Collis
Large pottery vase with tapering conical top and textured black surface. H.590mm
\$400 – \$500</p> <p>425 Peter Collis
Ovoid vase with tapering conical top section. H.340mm
\$140 – \$180</p> <p>426 Peter Collis
Ovoid vase with tapering conical top section. H.270mm
\$80 – \$120</p> <p>427 Peter Collis
Ovoid vase with crackle glaze. H.300mm
\$125 – \$175</p> <p>428 Michael Smither
Harmonic Model for Richard Pearse Aviator memorial 2011. H.270mm
\$400 – \$500</p> | <p>429 Len Castle
Avian bowl with alkaline blue glaze, impressed initials
D.220mm
\$300 – \$500</p> <p>430 John Roy
Hybrid number 1 and 2, pottery with pierced surface
\$500 – \$600</p> <p>431 Dane Mitchell
<i>Molotov</i> 2007
32/100
\$200 – \$400</p> <p>432 Six Crown Lynn pottery vases with blue glaze. H. 140mm max
\$150 – \$250</p> <p>433 Four Crown Lynn pottery vases with blue glaze. H. 235mm max
\$150 – \$250</p> <p>434 Peter Stichbury
Stoneware lamp base with ash and tenmoku glaze, faded mark, needs rewiring. H. 210mm
\$40 – \$80</p> <p>435 Richard Cadness
Large single aperture sedge grass holder with texture surface and impressed mark. H. 380mm
\$80 – \$120</p> | <p>436 Len Castle
Large avian bowl, earthenware with umber pigment and ash glazed well, impressed LC mark. D. 380mm
\$1500 – \$2500</p> <p>437 Paul Maseyk
Large earthenware bottle vase, inscribed 'good, crap, ugly, bad', signed to the base. H. 410mm
\$200 – \$300</p> <p>438 Barry Brickell
Pair of stoneware beakers with ash glaze, marked. H. 125mm
\$150 – \$300</p> <p>439 Lucie Rie
Elliptical shaped stoneware bowl with white tin glaze to the interior and manganese glaze to the exterior, impressed LR seal mark to the base (glaze cracks to interior). W. 160mm
\$750 – \$1000</p> <p>440 Lawrence Ewing
Large stoneware bottle vase with unglazed texture body and tenmoku glazed shoulder, impressed initials. H. 335mm
\$60 – \$80</p> <p>441 Len Castle
Small stoneware bottle with shino glaze, impressed LC mark. H. 190mm
\$80 – \$120</p> |
|--|---|--|



459



- 442 Chester Nealie
Early wood fired bottle, fired in the South Kaipara kiln probably in the late 1970s, with a provenance letter written by the potter. H. 235mm
\$300 – \$500
- 443 Mike O'Donnell
Large stoneware jar with poured crackled glaze, inscribed and signed to the base. H. 255mm
\$200 – \$300
- 444 Nick Stafford
Large stoneware bottle with drip yellow glaze over a black glaze, unmarked
\$50 – \$80
- 445 Andrew van der Putten
Multi-coloured porcelain vase with abstract decoration, impressed initials, together with a Scott Hockenhull porcelain cube. H. 320mm
\$100 – \$200
- 446 Barry Brickell [attrib.]
Large stoneware bowl, with brown ash glaze, unmarked. D. 355mm
\$80 – \$120
- 447 Jenny Shearer
Stoneware bread crock, with ash glaze and kauri lid, original potter's label to the base. H. 260mm
\$40 – \$80
- 448 Peter Alger
Large stoneware wood fired ribbed vase, four fish marks to the base. H. 420mm
\$500 – \$1000
- 449 Toby Stafford
Large olive green glazed stoneware vase decorated with incised fish panels, signed and dated 1991. H. 360mm
\$400 – \$800
- 450 Len Castle
Five stoneware pebbles with umber pigment, all with incised initials. W. 60mm max
\$30 – \$60



- 451 Len Castle
Stoneware bowl with oatmeal glaze, LC mark. D. 170mm
\$40 – \$80
- 452 Graeme Storm
Large stoneware bowl with matt barium blue glaze. D. 495mm
\$150 – \$300
- 453 Len Castle
Stoneware bowl with blue jun type glaze to the well over a dark tenmoku ground, LC mark. D. 340mm
An almost identical example illustrated in *Len Castle Potter*, Ron Sang and Len Castle 2002, p. 123
\$300 – \$500
- 454 Graham Ambrose
Large earthenware bowl with blue galaxy glaze, impressed mark. D. 560mm
\$1200 – \$1800
- 455 Graham Ambrose
Large earthenware bowl, with rare rich orange sun glaze, impressed mark. 560mm
\$1200 – \$1800
- 456 Graham Ambrose
Large porcelain orb with deep red crackled glaze, impressed mark. H. 300mm
\$1200 – \$1500
- 457 Anneke Borren
Two-part high fired earthenware sculpture, with potter's mark and inscribed 'New Vision Gallery Anneke Borren'. H. 200mm
\$300 – \$500
- 458 Len Castle
Volcanic Bomb, earthenware with red lava glaze to the interior, LC mark. W. 250mm
\$800 – \$1200

- 459 Len Castle
Sulphurous bowl of hemispherical form in earthenware with crackled sulphur glaze, LC mark. D. 450mm
\$7000 – \$9000
- 460 Len Castle
Rare Sulphurous bowl of unique smaller hemispherical form with vivid crackled glaze effects to the well, LC mark. D. 380mm
\$3500 – \$5000
- 461 Len Castle
Unique alkaline pool bowl of white earthenware with scored well and richly glazed in turquoise, LC mark, c.1995. D.400mm
\$1000 – \$2000
- 462 Len Castle
Unique earthenware alkaline blue glazed bowl with impressed triangular decoration and dark stained exterior, incised LC mark. D. 385mm
\$800 – \$1200
- 463 Len Castle
Large stoneware circular planter with poured green ash glaze, LC mark, c.1970s D. 320mm
\$200 – \$400
- 464 Charles Holmes
Stoneware shaped vase with textured surface, signed. H. 290mm
\$200 – \$400
- 465 Ray Finch
Winchcombe pottery butter dish, with brown slip decoration of two fish. W. 145mm
\$50 – \$100
- 466 Warren Tippet
Unglazed stoneware vase with a painted blue band around the body with glazed gestural decoration, marked. H. 250mm
\$100 – \$200
- 467 Warren Tippet
Two small jugs with ash glazes, both marked. H. 135mm
\$60 – \$120
- 468 Andrew van der Putten
Stoneware bowl with green and yellow poured glazes, marked. D. 180mm
\$50 – \$100
- 469 Chester Nealie
Two stoneware bowls with poured glazes, both with original label, one also marked. D. 140mm max
\$30 – \$50
- 470 Warren Tippet
Stoneware teapot with grey green glaze, marked. W. 170mm
\$50 – \$100
- 471 Len Castle
Stoneware bottle vase with pinched sides and blue/green glaze, impressed LC mark and dated 2000. H. 300mm
\$500 – \$800
- 472 Len Castle
Stoneware bottle vase with green glaze and textured surface, incised initials. H. 300mm
\$500 – \$800
- 473 John Papas
'Freedom', earthenware horse sculpture in a white wooden box frame, inscribed to frame verso. H. 430mm
\$200 – \$300
- 474 Sam Ireland
Tall pottery vase, with running green and white glaze effects over the body painted with white and green bands, marked. H. 470mm
\$180 – \$300
- 475 Sam Ireland
Tall pottery vase with strong throwing lines and impressions, running white and green glaze effects, marked. H. 445mm
\$180 – \$300
- 476 David Usher (Queensland, Australia)
Stoneware plate with stylised figural design, signed and dated 1989. D. 215mm
\$120 – \$180
- 477 Gavin Chilcott and David Usher
Two earthenware beakers decorated with heart design. H. 105mm max
\$150 – \$300
- 478 Len Castle
Rare and unusual Crum Brickworks salt glazed bottle vase, the salt glaze with an unusual 'flambé' look achieved by a blend of titanium and vanadium, LC mark. H. 185mm. Provenance: originally purchased from the Wellington Architectural Centre
\$1200 – \$1800
- 479 Martin Poppelwell and Gavin Chilcott
Small terracotta dish painted with an arrangement of vegetables. D. 130mm
\$150 – \$300
- 480 Martin Poppelwell and Gavin Chilcott
Terracotta bowl painted with an arrangement of vegetables. D. 150mm
\$200 – \$300
- 481 Martin Poppelwell
'Soltice', terracotta bowl, signed and inscribed to the base. D. 210mm
\$250 – \$400
- 482 Martin Poppelwell
'One', terracotta bowl. D. 255mm
\$350 – \$500
- 483 Martin Poppelwell
'Two', terracotta bowl. D. 230mm
\$300 – \$500
- 484 Ian Firth
Porcelain teapot with mottled turquoise glaze, impressed mark. W. 230mm
\$80 – \$120
- 485 Rick Rudd
Raku fired teapot. W. 240mm
\$180 – \$300
- 486 Michael Lucas
Large stoneware bowl, with speckled blue-green glaze decorated with a geometrical design in tenmoku glaze, impressed mark. D. 380mm
\$100 – \$200
- 487 Peter Alger
Large stoneware bowl with tenmoku glaze to the cavetto, the unglazed underside with clinker pattern, impressed fish mark. D. 400mm
\$350 – \$500
- 488 Peter Alger
Very large stoneware bowl with 'Koru and crackle pattern' shino glaze, impressed fish mark. D. 470mm. Provenance: Purchased in 1998 from potter's joint exhibition with Greg Barron
\$500 – \$800
- 489 Duncan Shearer
Anagama fired barrel-shaped floor pot, impressed mark. H. 380mm
\$300 – \$500
- 490 Len Castle
Stoneware pouring bowl, with green and tenmoku glaze, incised initials. W. 145mm
\$100 – \$200
- 491 Juliet Peter
Stoneware trough vase with shaped rim, incised initials. W. 200mm
\$60 – \$80
- 492 Ray Roger
Stoneware slab vase with iridescent glaze, signed. H. 350mm
\$300 – \$500

Decorative Arts

- 493 Art deco walnut piano. W.1370mm
\$750 – \$1200
- 494 Art deco style mottled kauri side table. W.650mm
\$300 – \$500
- 495 Joel Hammond for Christen Mass
French bronze cubist figure, edition 3 of 4. H.370mm
\$800 – \$1200
- 496 Rare book of twenty-two French Art deco period wall paper samples produced by the French manufacturer Isidore Leroy. Some of the work probably by the well-known French painter and entomologist Emile-Allain Seguy
\$800 – \$1200
- 497 Group of seven wall paper samples produced by the French manufacturer Isidore Leroy
\$650 – \$800
- 498 Emile-Allain Seguy (attributed)
Large framed French Art deco period wall paper sample depicting a stylised clematis and vine design
900 x 700mm
\$500 – \$700



499

- 499 George White for Royal Doulton
Large and impressive vase of ovoid form. Hand painted with three females in diaphanous clothing being serenaded by a young man playing the aulos. The scene set in a classical garden landscape with waterfall and trees. The top section with gilded lappets and scrolling handles centred by flower heads. The vase is raised from a swivelling pedestal base with a spreading gilded foot. Signed. Minor restoration to one handle. H.790mm.
George White worked at Doulton and Co in Burslem from 1885-1912 and was noted for his painting of classical figures and landscapes
\$3000 – \$5000
- 500 Georgian walnut sarcophagus shaped tea caddy. W.290mm
\$150 – \$300
- 501 Art deco silver plate and green enamel cased toilet set comprising a brush, three lidded jars and a perfume bottle
\$30 – \$50
- 502 Chinese lacquered wood ruyi sceptre with mother of pearl inlaid decoration. L. 400mm
\$300 – \$500
- 503 Chinese pale celadon figural group, carved with a beautiful lady and two young boys holding prunus flowers and surrounding a large vessel, on the back of the lady a long tailed bird perched on a prunus tree. H. 170mm, wood stand
\$800 – \$1200
- 504 Pair of Chinese spinach jade bowls together with a jade saucer. The bowls, D. 100mm
\$250 – \$400



505 Japanese ivory okimono of a seated figure, Meiji period, the man seating on a wood trunk holding a tray in his left hand and a seashell in his right, signed. H. 120mm (detachable left arm and hand, possible piece/s missing from the tray)
\$400 – \$500

506 Japanese ivory okimono of a monkey trainer, Meiji/Taisho period, the monkey standing on the trainer shoulder holding a fan and a flower. H. 250mm
\$600 – \$800

507 Lalique frosted glass figure of a cat, unsigned. H. 210mm
\$150 – \$300

508 Clarice Cliff, designed by Dame Laura Knight circus pattern Bizarre plate, hand painted with circus seals, with factory mark and Laura Knight facsimile signature to the base, c.1934. D. 255mm
\$500 – \$800

509 Pair of Staffordshire dogs, marked and inscribed to the base. H. 190mm
\$60 – \$120

510 Paul Beadle
Circular metal plaque cast in low relief with winged figures in various activities. D. 80mm, wood stand
\$300 – \$500

511 Taxidermy Tahr head and shoulder mount. L. 700mm
\$1500 – \$1800

512 George III period mahogany secretaire bookcase. The upper section with astragal glazed doors enclosing three shelves. The lower section with secretaire drawer enclosing a fitted interior above two full width drawers on bracket feet. H. 2100mm
\$1000 – \$2000

513 Oak refectory table raised on a trestle form base. L. 180mm
\$400 – \$600

514 Victorian sterling silver fish slice and fork, London 1856 by Francis Higgins. L. 320mm
\$150 – \$300

515 Sterling silver matched four-piece cruet set, including a mustard pot, two salts and a pepper shaker, with various Birmingham hallmarks dated 1897, 1904 and 1913. W. 70mm max
\$80 – \$120

516 Georgian sterling silver toast rack, London 1806 by S. Godbehere & E. Wigan; together with a pair of sterling silver gravy boats, Sheffield 1904 by John and William Deakin. H. 130mm max
\$150 – \$300

517 A rare 19th century French papier-mache bulldog growler toy with well-defined musculature and bobbing head with pull chain operating the growler mechanism and with original wooden castors concealed beneath the paws. Circa 1890. L. 560mm
\$1000 – \$2000



Conditions of sale

Please note: it is assumed that all bidders at auction have read and agreed to the conditions described on this page.
ART+OBJECT directors are available during the auction viewing to clarify any questions you may have.

1.

Registration: Only registered bidders may bid at auction. You are required to complete a bidding card or absentee bidding form prior to the auction giving your correct name, address and telephone contact + supplementary information such as email addresses that you may wish to supply to ART+OBJECT

2.

Bidding: The highest bidder will be the purchaser subject to the auctioneer accepting the winning bid and any vendor's reserve having been reached. The auctioneer has the right to refuse any bid. If this takes place or in the event of a dispute the auctioneer may call for bids at the previous lowest bid and proceed from this point. Bids advance at sums decreed by the auctioneer unless signaled otherwise by the auctioneer. No bids may be retracted. The auctioneer retains the right to bid on behalf of the vendor up to the reserve figure.

3.

Reserve: Lots are offered and sold subject to the vendor's reserve price being met.

4.

Lots offered and sold as described and viewed: ART+OBJECT makes all attempts to accurately describe and catalogue lots offered for sale. Notwithstanding this neither the vendor nor ART+OBJECT accepts any liability for errors of description or faults and imperfections whether described in writing or verbally. This applies to questions of authenticity and quality of the item. Buyers are deemed to have inspected the item thoroughly and proceed on their own judgment. The act of bidding is agreed by the buyer to be an indication that they are satisfied on all counts regarding condition and authenticity.

5.

Buyers premium: The purchaser by bidding acknowledges their acceptance of a buyers premium of 17.5% + GST on the premium to be added to the hammer price in the event of a successful sale at auction.

6.

ART+OBJECT is an agent for a vendor: A+O has the right to conduct the sale of an item on behalf of a vendor. This may include withdrawing an item from sale for any reason.

7.

Payment: Successful bidders are required to make full payment immediately post sale – being either the day of the sale or the following day. If for any reason payment is delayed then a 20% deposit is required immediately and the balance to 100% required within 3 working days of the sale date. Payment can be made by Eftpos, bank cheque or cash. Cheques must be cleared before items are available for collection. Credit cards are not accepted.

8.

Failure to make payment: If a purchaser fails to make payment as outlined in point 7 above ART+OBJECT may without any advice to the purchaser exercise its right to: a) rescind or stop the sale, b) re offer the lot for sale to an underbidder or at auction. ART+OBJECT reserves the right to pursue the purchaser for any difference in sale proceeds if this course of action is chosen, c) to pursue legal remedy for breach of contract.

9.

Collection of goods: Purchased items are to be removed from ART+OBJECT premises immediately after payment or clearance of cheques. Absentee bidders must make provision for the uplifting of purchased items (see instructions on the facing page)

10.

Bidders obligations: The act of bidding means all bidders acknowledge that they are personally responsible for payment if they are the successful bidder. This includes all registered absentee or telephone bidders. Bidders acting as an agent for a third party must obtain written authority from ART+OBJECT and provide written instructions from any represented party and their express commitment to pay all funds relating to a successful bid by their nominated agent.

11.

Bids under reserve & highest subject bids: When the highest bid is below the vendor's reserve this work may be announced by the auctioneer as sold 'subject to vendor's authority' or some similar phrase. The effect of this announcement is to signify that the highest bidder will be the purchaser at the bid price if the vendor accepts this price. If this highest bid is accepted then the purchaser has entered a contract to purchase the item at the bid price plus any relevant buyers premium.

Important advice for buyers

The following information does not form part of the conditions of sale, however buyers, particularly first time bidders are recommended to read these notes.

A.

Bidding at auction: Please ensure your instructions to the auctioneer are clear and easily understood. It is well to understand that during a busy sale with multiple bidders the auctioneer may not be able to see all bids at all times. It is recommended that you raise your bidding number clearly and without hesitation. If your bid is made in error or you have misunderstood the bidding level please advise the auctioneer immediately of your error – prior to the hammer falling. Please note that if you have made a bid and the hammer has fallen and you are the highest bidder you have entered a binding contract to purchase an item at the bid price. New bidders in particular are advised to make themselves known to the sale auctioneer who will assist you with any questions about the conduct of the auction.

B.

Absentee bidding: ART+OBJECT welcomes absentee bids once the necessary authority has been completed and lodged with ART+OBJECT. A+O will do all it can to ensure bids are lodged on your behalf but accepts no liability for failure to carry out these bids. See the Absentee bidding form in this catalogue for information on lodging absentee bids. These are accepted up to 2 hours prior to the published auction commencement.

C.

Telephone bids: The same conditions apply to telephone bids. It is highly preferable to bid over a landline as the vagaries of cellphone connections may result in disappointment. You will be telephoned prior to your indicated lot arising in the catalogue order. If the phone is engaged or connection impossible the sale will proceed without your bidding. At times during an auction the bidding can be frenetic so you need to be sure you give clear instructions to the person executing your bids. The auctioneer will endeavour to cater to the requirements of phone bidders but cannot wait for a phone bid so your prompt participation is requested.

D.

New Zealand dollars: All estimates in this catalogue are in New Zealand dollars. The amount to be paid by successful bidders on the payment date is the New Zealand dollar amount stated on the purchaser invoice. Exchange rate variations are at the risk of the purchaser.

Absentee bid form

Auction No. 103

New Collectors Art
Wednesday 1 June 2016
(lots 1–239)

Decorative Arts
Thursday 2 June 2016
(lots 250–517)

This completed and signed form authorises ART+OBJECT to bid on my behalf at the above mentioned auction for the following lots up to prices indicated below. These bids are to be executed at the lowest price levels possible.

I understand that if successful I will purchase the lot or lots at or below the prices listed on this form and the listed buyers premium for this sale (17.5%) and GST on the buyers premium. I warrant also that I have read and understood and agree to comply with the conditions of sale as printed in the catalogue.

Lot no.	Lot Description	Bid maximum in New Zealand dollars (for absentee bids only)
_____	_____	_____
_____	_____	_____
_____	_____	_____
_____	_____	_____
_____	_____	_____
_____	_____	_____
_____	_____	_____
_____	_____	_____
_____	_____	_____
_____	_____	_____
_____	_____	_____

Payment and Delivery ART+OBJECT will advise me as soon as is practical that I am the successful bidder of the lot or lots described above. I agree to pay immediately on receipt of this advice. Payment will be by cash, cheque or bank transfer. I understand that cheques will need to be cleared before goods can be uplifted or dispatched. I will arrange for collection or dispatch of my purchases. If ART+OBJECT is instructed by me to arrange for packing and dispatch of goods I agree to pay any costs incurred by ART+OBJECT. Note: ART+OBJECT requests that these arrangements are made prior to the auction date to ensure prompt delivery processing.

Please indicate as appropriate by ticking the box:

☐ PHONE BID

☐ ABSENTEE BID

MR/MRS/MS

FIRST NAME: _____

SURNAME: _____

ADDRESS: _____

HOME PHONE: _____

MOBILE: _____

BUSINESS PHONE: _____

EMAIL: _____

Signed as agreed: _____

To register for Absentee or Phone Bidding this form must be lodged with ART+OBJECT by 2pm on the day of the published sale time in one of three ways:

1. Email a printed, signed and scanned form to ART+OBJECT: info@artandobject.co.nz
2. Fax a completed form to ART+OBJECT: +64 9 354 4645
3. Post a form to ART+OBJECT, PO Box 68 345 Newton, Auckland 1145, New Zealand

ART+OBJECT 3 Abbey Street, Newton, Auckland, New Zealand. Email info@artandobject.co.nz, Telephone +64 9 354 4646, Freephone 0800 80 60 01

