

ART
OBJECT



Front cover (detail)

12	Christopher Grattan <i>Curve</i> chair. Laminated plywood, cast aluminium and aluminum tube. Designed 1996. Exhibited and illustrated <i>Framed – A Studio Furniture Survey</i> 1997, Dowse Art Museum and Waikato Museum of Art and History touring exhibition catalogue. \$4500-5500
----	--

Back cover

273	A Japanese <i>Horikawa</i> tin plate Astronaut robot. Complete with box. H.300mm. Made in 1963 \$750-\$900
-----	--

20TH CENTURY DESIGN

INCLUDING THE

MICHAEL BARRYMORE &
SHAUN DAVIS COLLECTION

Tuesday 11 December 2007 6pm

page 7

COLLECTABLE TOYS

INCLUDING THE

BARRY WILKES COLLECTION
OF FILM & TV RELATED TOYS

Wednesday 12 December 2007 6.30pm

page 27

20TH CENTURY DESIGN

INCLUDING THE MICHAEL BARRYMORE & SHAUN DAVIES COLLECTION

COLLECTABLE TOYS

INCLUDING THE BARRY WILKES COLLECTION OF FILM & TELEVISION RELATED TOYS

Michael Barrymore and Shaun Davies are avid home decorators. Their New York style loft apartment which recently sold was furnished and decorated in their eclectic international taste with a leaning towards Art Deco. Michael's return to England has presented us with the opportunity to offer their collection at auction.

The breadth of the collection posed a quandry about where and when it was best to auction it. We hope that you find it's inclusion with our 20th Century Design catalogue gives you some food for thought with regards your own interior decorating and whether 'mixing it up' is for you. We've very much enjoyed putting this last Art + Object catalogue for 2007 together, we hope that you enjoy it's contents.

2008 is already shaping up to be a busy year for Art + Object with a calendar that opens with the Ant Sumich Memorial Art Auction (www.antsumichartauction.org.nz) on Thursday 7 February, followed by New Collectors Art, the Marie Brooks Collection of Decorative Arts and an outstanding collection of Americana in late February. March will herald a sale of Contemporary Art+Objects and May a catalogue of Photography.

Barry Wilkes, who sadly passed away earlier this year, was one of those rare collectors who found his calling early in life and was able to build his extraordinary collection over the course of five decades from the 1960s.

As a young man in England Barry was part of the generation for whom the television was a new and exciting invention. His youth was quite different from today's TV-saturated, multi-channel, MySpace world. Kids in the 1960s huddled around one channel, in colour if they were lucky, and they all watched the same TV shows. This means the impact of TV and pop culture from this period was immense and pervasive.

The Wilkes collection is vast and encyclopedic; almost every TV related toy is included from the mid sixties to the 1990s. Nearest to his heart, undoubtedly were toys inspired by the genius of SuperMarionation, Gerry Anderson. It is not an exaggeration to say that Anderson and his puppets were, on the British side of Atlantic – and in the Commonwealth – one of the most iconic, recognizable and long lasting phenomena to emerge in the 1960s.

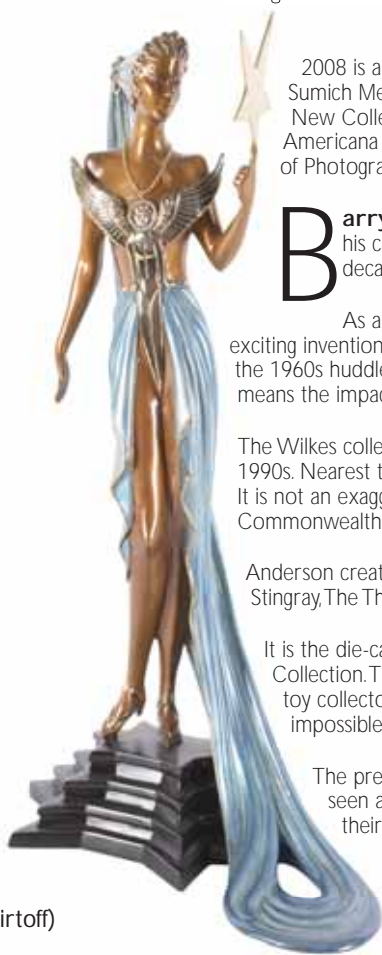
Anderson created amazing Sci-Fi worlds and memorable characters in hit after hit series including Supercar, Stingray, The Thunderbirds, Captain Scarlet, Joe 90, UFO and Space 1999.

It is the die-cast Corgi and Dinky toys inspired by these shows which form the core of the Barry Wilkes Collection. The toys are presented in pristine condition and in their original boxes, perfectly maintained. For toy collectors the world over items in this MIB condition are the Holy Grail of collectability and almost impossible to find in New Zealand in this range and quality.

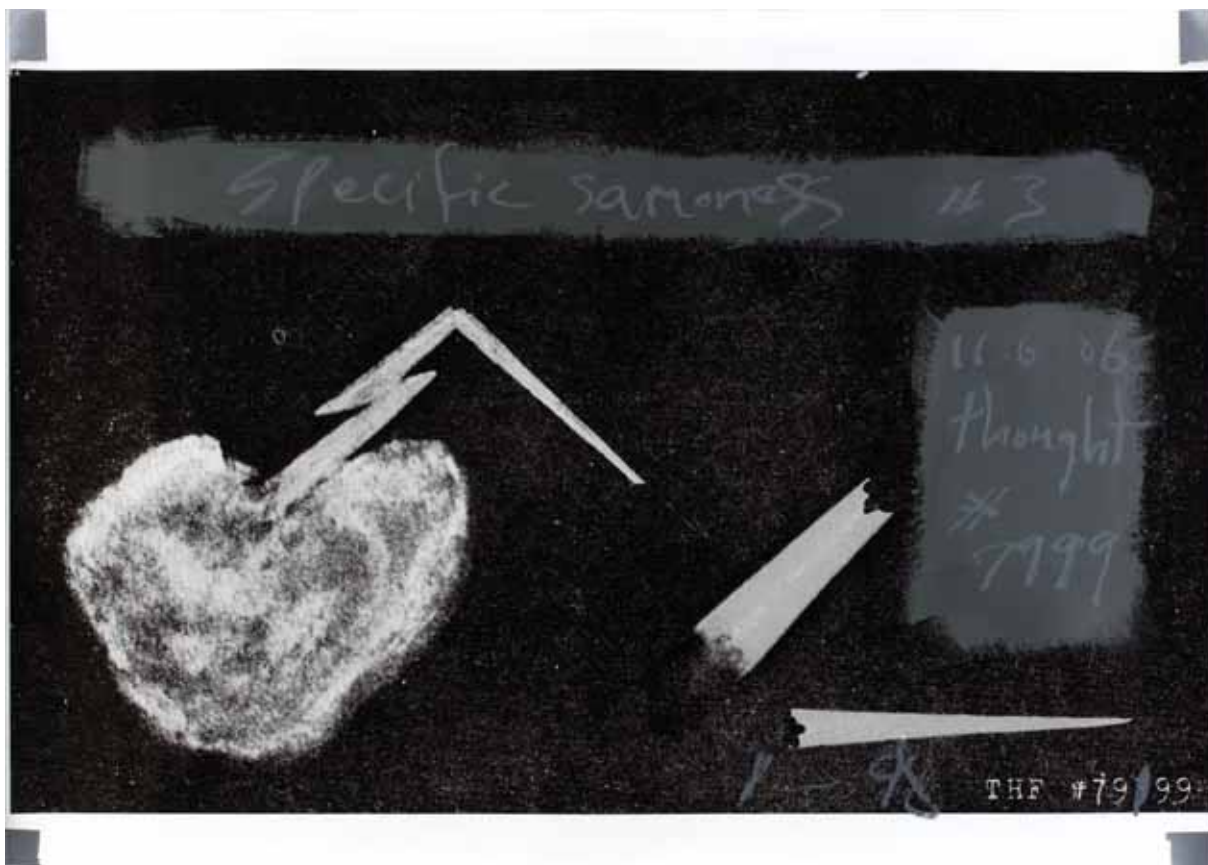
The pre-auction viewing from December 7 will be a rare treat for toy fans, many of whom will only have seen a mint and boxed Corgi James Bond Aston Martin or a Dinky Captain Scarlet MSV online, or in their dreams!

Two important notices regarding the Toy catalogue. Please note that the toy catalogue is offered in two parts. Part one of approximately 100 lots is contained in this catalogue with many items illustrated. The Wilkes collection is simply so vast that not all of the items could be contained in this catalogue. Part two of the catalogue will be available at the viewing.

Care of items displayed: Collectors are advised that inspection of the toys will be by request and under the supervision of an ART+OBJECT member of staff. Many of the items offered are of high value and include delicate packaging and attachments which greatly add to the value and desirability of the items. These are easily lost or damaged, for this reason please ask an A+O staff member if you wish to inspect a particular item



107 | Erte (Romain de Tiroff)
bronze sculpture
Astra
Limited edition 93/500. H.490mm
\$800-1400



Contemporary Art + Objects

INCLUDING THE
ART & TEXT GROUP COLLECTION

TUESDAY 18 MARCH 2008 6.30PM

ENQUIRIES: Ben Plumbly ben@artandobject.co.nz
Ross Millar ross@artandobject.co.nz

et al.
thought #7999
acrylic, oil stick, gaffer tape and
screenprint on archival paper
\$4500 - \$6500



american classics

a single vendor collection of
over 300 lots of americana
for auction in February 2008



ENQUIRIES: James Parkinson
james@artandobject.co.nz
021 222 8183



○ The Marie Booker Collection N

After twenty five years of active collecting Marie Booker has decided to sell her extensive collection by auction. The collection comprises over 500 items including 18th century and 19th century pottery and porcelain, fine examples of Royal Doulton, Tudric pewter, Loetz, Royal Crown Derby and numerous other items.

The collection is to be offered together with further items from the Colin Manson estate including a large collection of Waterford crystal on

WEDNESDAY 27 FEBRUARY 2008 6PM

ENQUIRIES:

James Parkinson

james@artandobject.co.nz

021 222 8183

Ross Millar

ross@artandobject.co.nz

021 222 8185





101 | Philippe Starck for Fiam Italia *Caadre* mirror .
1950 x 1050mm
\$2500-3500

VIEWING

Fri 7 Dec 9am – 5pm
Sat 8 Dec 11am – 4pm
Sun 9 Dec 11am – 4pm
Mon 10 Dec 9am – 5pm
Tues 11 Dec 9am – 12noon

ENQUIRIES

James Parkinson,
james@artandobject.co.nz
021 222 8185
Ross Millar
ross@artandobject.co.nz
021 222 8185

BUYER'S PREMIUM

12.5% premium plus GST
effectively 14.06% added to
bids in this auction



20TH CENTURY DESIGN

INCLUDING THE

MICHAEL BARRYMORE &
SHAUN DAVIS COLLECTION

Tuesday 11 December 2007 6pm



- 1 | Early 1960s pallisander rosewood writing desk.
With two banks of four drawers flanking the
kneehole supported on crooked legs.
\$2800-4000



- 2 | 1960s Danish teak bookcase
with adjustable shelves
\$600-800



- 3 | Kai Kristensen (Denmark)
set of four teak dining chairs,
c. 1960s.
\$1500-2500



- 4 | Torbjorn Afdal (Norway) circular
pallisander rosewood coffee table.
\$700-1200



- 5 | Danish 1960s swivel armchair
upholstered in dark green leather, with high back and
tapering square section arms, loose cushioned seat and
back, raised on a five star aluminium base with glides.
\$1200-1800



6

6 | Hans Wegner for Getama Danmark 258 Day Bed.

Designed 1954. Beech framed with original blue fabric upholstery. W.2050mm

\$1500-2500

7 | Arne Vodder for Sibast Furniture (Denmark)

pallisander rosewood armchair with original black leather upholstery. Labeled underneath.

\$1200-1800



8 | Hans Wegner for Getama Danmark Plank lounge chair

model GE-290. Stamped label to underside.

\$1800-2800



9 | Arne Norell for Norell Furniture two seater sofa and matching armchair.

Stained European beech frame with buckled leather panels holding shaped loose leather cushions.

\$2500-3500

10 | An Eero Aarnio Ball or Globe Chair

designed in 1966. This example is manufactured by Adeita in the 1970's on swivelling base. Black wool blend upholstery.

\$5000-7000





11

- 11 | **Verner Panton for Innovation Randers A/S Denmark**
pair of Phantom multi-purpose furniture pieces.
 Designed 1998. Produced in the last few years of Panton's life these irregularly shaped objects may be positioned to act as chair, easy chair, bench seat, or side table. Embossed signature on back.
\$1500-2000



12

- 12 | **Christopher Grattan Curve chair.**
 Laminated plywood, cast aluminium and aluminum tube.
 Designed 1996.
 Exhibited and illustrated Framed – A Studio Furniture Survey 1997, Dowse Art Museum and Waikato Museum of Art and History touring exhibition catalogue.
\$4500-5500



16

- 13 | **Le Corbusier by Cassina. Chaise Longue LC4**
 Aniline black leather upholstered adjustable chrome cradle on matte black steel base
 Designed in 1928, made under license to the Le Corbusier Foundation. Etched manufacturers mark and numbered to frame.
\$2000-3000

- 14 | **A pair of Wassily chairs**
 after the original design by Marcel Breuer with chromium plated frame and with black leather seat and supports.
\$500-\$900



17

- 15 | **Set of five Ettore Sottsass, Memphis Design totems**
 Manufactured by Bitossi, Montelupo, Italy. Inscribed manufacturer's marks and edition numbered.
 Tallest H.500mm
\$5000-6000



15

- 16 | **A Polish 1950's charger by W Gorogzeni**
 hand painted with flag forms set in an abstracted beachscape in an orange, blue and yellow palette.
 Signed and dated 1958 to the base and titled "The Beach". D.320mm
\$350-\$500

- 17 | **A 1950's Candese Aquarium vase**
 The clear glass encasing three angel fish swimming amongst pond weed.
 Original Candese paper label to the base. W.210mm H.130mm
\$2500-\$3000

- 18 | Timo Sarpaneva for Holmegaard bark vase
smoky gray colour cylindrical form with
everted rim. H.220mm
\$1000-\$1500



18

- 19 | Finn Juhl for France and Son.
Pair of Diplomat range chairs.
Teak framed, grey wool blend upholstered seats and backs.
\$1600-2400

- 20 | Finn Juhl Diplomat Series teak writing desk.
Manufactured by France & Son. Designed c.1962
Labelled underneath. 1900 x 950mm
\$2200-3200



20

- 21 | Rosewood credenza bookcase unit
manufactured by Nipu, Denmark.
The upper section with cube shelves on a
lower section with single tambour door.
\$1500-2000

- 22 | A credenza bookcase matching the above
\$1500-2000

- 23 | Gunni Omann for Omann Jun Mobelfabrik
four door credenza.
c.1960sc Each highly figured grained door with
knife blade handles, opening to reveal six drawer
slides to the left and adjustable shelves to the
other three sections, raised on tapering legs.
\$2500-3500



21



23



24



26

- 24 | Pair of Peter Hvidt and Olga Molgaard-Nielsen design Boomerang lounge chairs
c.1956 Teak framed, one with arms, raised on slender nickel plated legs. Manufactured by France & Son. Danish export label affixed to back rail.
\$2200-3200

- 25 | Giancarlo Piretti for Castelli Alky chair
Designed 1969. In original brown fabric
\$800-1200



25

- 26 | Pair of Poul Henningsen for Louis Poulsen (Denmark) PH5 pendent ceiling lights.
Orange and white painted aluminium.
\$1200-1800



27

- 27 | Grete Jalk for France & Sons European beech framed armchair
With original red wool upholstered sprung cushions to seat and back. Label to back rail.
\$900-1300



29

- 28 | Bruno Mathsson for Dux (Sweden) Pernilla lounge chair.
Designed 1966. With beech frame original canvas upholstered cushions.
\$2000-3000

- 29 | Swedish bentwood natural beech armchair in the style of Bruno Mathsson, c.1960s.
With matching ottoman, upholstered in natural jute webbing
\$800-1200



30

- 30 | Arne Jacobsen AJ pendent light
Designed 1957 for the SAS Royal
hotel, Copenhagen, Denmark.
\$700-900



33

- 31 | Hans Olsen (Denmark) high back
four seater leather sofa
on oak legs. Designed 1965.
\$2500-4000

- 32 | Late 1960s Danish pallisander rosewood two
section sideboard wall unit
\$2000-3000

- 33 | Svend Middelboe for Nordisk Solar
Verona pendent ceiling lamp
c.1960s, in white painted aluminium
\$650-950

- 34 | Morrison 8 Danish 1950s teak and oak diningtable
with unusual skirt and a set of six splay back
dining chairs with original fabric seats
\$2500-3500

- 35 | Danish rosewood credenza
with matched figured veneered sliding
doors above four drawers with recessed
slot handles, raised on tapering legs
with stretchers
\$2500-3500



29



35



36 | 1960s circular rosewood extension dining table
by Haslev. Complete with two leaves, to seat eight.
\$1500-2000



37 | Set of four 1960s rosewood framed dining chairs
with black upholstery.
\$1600-2400



38 | Lane (America) coffee table
with walnut top with inlaid keyed
detailing, raised on an ash base with
black lacquered tipped feet.
Maker's mark underneath.
\$400-600

39 | Johannes Andersen (Denmark) African
mahogany library table –
desk – dining table. c.1960s.
\$1000-1500

39



40 | Scandinavian Lip chair
late 70s, early 80s. In natural wood.
\$500-600

41 | Scandinavian Lip chair
as above but in orange lacquer
\$500-600



40

42 | Rectangular rosewood coffee table.
Maker's stamp to underside
\$650-850



42

43 | Danish rosewood credenza
with two sliding doors to the left enclosing shelves,
a fall fronted mirror lined cocktail cabinet to the
right above three drawers, raised on a stretcher base.
\$2500-3500

44 | English teak lowline sideboard
with three paneled doors to the left and
a bank of three drawers to the right.
\$1500-2000

45 | 1960s American Space Age Sputnik ceiling
pendent light
in chrome.
\$350-500





45

- 46 | **A 1970s Diplomat sofa**
designed by John Home for H K furniture with black leatherette upholstery raised on cylindrical chromium plated legs
\$2500-\$3000
- 47 | **A 1950's three seater teak framed sofa.**
The sofa originally part of the furnishings of an Ernst Plishe designed home in Wellington
\$1800-\$2400
- 48 | **A 1950's tambour door corner shelf cabinet.**
\$400-\$450
- 49 | **A 1950s pale oak corner coffee table**
\$300-\$400
- 50 | **Charles and Ray Eames for Herman Miller aluminium group twin pedestal table**
\$2250-\$3000
- 51 | **Michael Bang for Holmegaard.**
Set of three green glass orb vases of graduated size, each with multiple apertures. Factory marks and artists initials to the base.
\$800-\$1200
- 52 | **An Italian Mazeya Saxophonist figure,**
modelled seated. With original paper label to right leg. H.130mm
\$300-\$500
- 53 | **A pair of Rene Lalique tumblers,**
orange tinted decorated with an overlapping leaf design. Marked R Lalique France.
\$750-\$900



44

- 54 | **A Segusso glass bird**
together with a glass seahorse
\$180-\$240
- 55 | **Lano-Tagila Pieta for La Murrina - pop art Lunar Eclipse wine decanter,** clear glass with cased glass base with orange and amber sun disc. H.300mm
\$800-\$1200
- 56 | **Eric Hoglund for Boda Glassworks green glass table lamp,**
cylindrical with internal ribbing H.410mm
\$800-\$1200
- 57 | **A pair of Italia smoky gray glass cocktail shakers**
with chromium plated lids. H.260mm
\$350-\$500
- 58 | **Per Lutken for Holmegaard biomorphic free form dish.**
Signed with initials and dated 1960 to the base, complete with original factory paper label L.330mm.
\$300-\$400
- 59 | **A 1960's hand blown pop art vase,**
tapering cylindrical shape, yellow tinted encasing two swirling bands in white and orange
\$150-\$250
- 60 | **Vistosi Murano hand blown 1960's red art glass vase**
\$450-\$650
- 61 | **A Murano 1960's pop art vase of bullet shape,**
thick walled with clear glass encasing a blue and white interior. H.260mm
\$800-\$1000

- 62 | **A Holmegaard mould blown blue cased glass bottle**
with red spherical stopper. H.420mm
\$300-\$400
- 63 | **A Murano mould blown milk glass cased bottle**
with swirling orange design to the surface with matching spherical stopper. H.400mm
\$300-\$400
- 64 | **A Danish Soholm vase of bullet shape, s**
graffito cut and painted with leaf and stylised flower design. H.450mm
\$450-\$600
- 65 | **A Danish Soholm vase**
matching the above lot but of smaller size.
H.160mm
\$100-\$200
- 66 | **1950s pottery bust on stand**
modelled in side profile with plaited flax fibre hair H.340mm
\$300-\$400
- 67 | **Pair of Japanese black and orange painted metal wall plates**
each with a demon face cast in brass in high relief. D.270mm
\$200-\$400
- 68 | **Gambone style figure of a bull,**
the muscular figure modelled in a poised stance as if about to charge, with orange and mottled olive glaze. Broken and repaired back leg.
L.460mm
\$350-\$500
- 69 | **Pair of Memphis style wooden candlesticks of tapering conical form.**
H.220mm
\$125-\$175
- 70 | **Baccarat glass decanter.**
Faulted stopper. H.240mm
\$50-\$80
- 71 | **Norwegian glass vase.**
H.110mm
\$80-\$120
- 72 | **Pottery vase**
decorated with cruciform design on an orange ground together with another pottery vase
\$80-\$120
- 73 | **Japan line 1950's lidded container.**
\$80-\$120
- 74 | **Anna Everlund stainless steel vase and candelabra**
\$50-\$80

- 75 | **Kosta Boda glass vase.**
H.200
\$50-\$80
- 76 | **Danish smoky glass decanter.**
H.180mm
\$50-\$80
- 77 | **Set of three Rosenthal studio line glass bowls**
designed by Zsafia Kanyak, each of helmet form and of graduated size.
\$400-\$600
- 78 | **Geoffrey Baxter for Whitefriars hand blown green glass vase**
with internal bubbled decoration. H.180mm
\$250-\$350
- 79 | **Scandinavian glass vase in the style of Tapio Wirkkala,**
ovoid shape with alternating blue and white bands. H.160mm
\$125-\$175
- 80 | **Scandinavian glass vase with vertical cut bands.** H.240mm
\$80-\$120
- 81 | **Three piece chromium plated lounge suite**
with red and black vinyl upholstery
\$600-\$800
- 82 | **Four piece chromium plated lounge suite**
with red and black vinyl upholstery
\$700-\$900
- 83 | **Large German pottery floor vase of ovoid shape**
with mottled ecru, green and yellow glaze.
H.480mm
\$100-\$200
- 84 | **A large German pottery floor vase**
of ovoid shape with mottled ecru and orange banded glaze. H.440mm
- 85 | **Two German pottery vases**
with red volcanic glaze
\$100-\$150
- 86 | **Two German pottery vases painted in a brown and yellow banded pattern**
\$100-\$150
- 87 | **Three German pottery vases**
\$80-\$120



- 88 | **Two German pottery vases**
decorated in a red volcanic glaze
\$80-\$120
- 89 | **Three German pottery vases**
\$80-\$120
- 90 | **Two German pottery vases**
\$50-\$80
- 91 | **Quartite Creative Corp table lamp**
Ovoid textured ceramic base with inlaid mosaic tiles to the upper section. Original drum shade. Marked and dated MCMLXII (1962)
\$150-200
- 92 | **Massive German pottery vase by Scheurich. Europe Linie label affixed**
White slip vertical corded decoration
Height 500mm
\$100-200
- 93 | **Jens Quistgaard oblong teak serving tray.**
With scalloped surface. Branded marks. 575 x 415mm
\$150-250
- 94 | **Jens Quistgaard for Dansk teak oval ashet.**
With routed encircling channel and well at one end. Branded mark. 450 x 230mm
\$60-80
- 95 | **Kendall 1950's Frank Carpay designed polyester ladies jacket**
with a stylised circle design in green and white.
\$80-\$120
- 96 | **Kendall 1950's Frank Carpay designed polyester ladies jacket**
with a stylised floral and circle and grid design in white and blue.
\$80-\$120



97

- 97 | Pair of Ralph Lauren calfskin upholstered four seater couches, along with a pair of matching footstools. All raised on square section legs and decoratively brass studded. W.2400mm each.
\$10 000-16 000



- 98 | Jan Ekselius design armchair.
Black leather upholstered, roll armed with red leather head rest.
\$1500-2000



98

- 99 | Ralph Lauren design armchair.
Chocolate brown leather roll arms and black leather cushioned seat and back.
\$2500-4500



99

- 100 | Pair of Ralph Lauren design table lamps.
With glass campana urn shaped bodies fitted with metal covers and bases. With one pleated shade.
\$600-1000

- 101 | Philippe Starck for Fiam Italia *Caadre* mirror.
One piece including ogee frame with slots at the corners. 1950 x 1050mm
Illustrated page 4
\$2500-3500

- 102 | Ralph Lauren design super king bed.
With brown calfskin upholstered head and footboard, oak carved frame raised on paw feet.
2000 x 2700mm
\$8000-14000

- 103 | Pair of Ralph Lauren design bedside tables.
Of cylindrical form, each with a cupboard, raised on a chrome plated base. Dia.600mm
\$2000-3000

104 | Pablo Picasso

Picador (Le Picador II), 1961;
Original lithograph in colors
dated on the stone 6.3.61 II 21.4.61
Unsigned and unnumbered edition published by
Mourlot Freres, from A Los Toros ,
Paris.
230 x 290mm
\$6000-10 000



104

105 | Large Murano glass vase

decorated in applied colours with a
Picassoesque face. Etched signature. H.520mm
\$1000-1500



105

106 | Murano glass Picasso bust.

H.500mm
\$1400-2000



107

108

107 | Erte (Romain de Tirtoff) cold painted
bronze sculpture

Astra.
Limited edition 93/500. Foundry mark ,
marked Sevenarts Ltd London and dated
1987. Originally issued by the Dyansen Gallery.
H.490mm
\$800-1400

108 | Erte (Romain de Tirtoff) cold painted
bronze sculpture

Balinese (from Les Rois de Legendes).
Limited edition 355/375 Marked Chalk and
Vermillion and Sevenarts and dated 1990.
Originally issued by the Dyansen Gallery.
H.570mm
\$800-1400

109 | Erte, My Life / My Art, an autobiography

Limited edition 314/1000 signed copy produced
for the Dyansen Galleries, published by Dutton,
NY 1989. With original solander box case.
\$100-200



112

- 110 | Large Contour glass bowl by Bob Crooks (Scottish, 1965-).
Engraved signature. 570 x 350 x 200mm.
\$800-1200



115

- 111 | Tapering pine plinth with brass mesh panels
raised from a stepped plinth
\$100-200

- 112 | Charles Lottam Multiflora vase.
Studio glass, signed and entitled under base, dated 2004. Dia.350mm
\$600-800

- 113 | Orlando Zannaro for Murano. Blown glass vase
with coloured web effect over the entire flattened circular form.
Signed.
\$500-750

- 114 | Murano glass square dish
with pierced well, in sapphire and lilac colours
\$90-150

- 115 | Italian squat ovoid glass vase,
in bright orange with vermillion splatter effect and zig-zagging ribbon decoration. Etched signature.
90-150

- 116 | Sony Trinitron television,
along with a Sony VCR, a Sony DVD/CD/video CD player and a matching unit stand
\$1000-1500

- 117 | Mamiya C330 Professional f twin lens reflex camera.
\$100-200

- 118 | Franke & Heidecke Rolliflex twin lens reflex camera
\$200-300

- 119 | Aluminium cantilever anglepoise lamp
\$125-225

- 120 | Andrea Anastasio for Artemide Galatea Tavola 52 lamp.
Chrome steel frame and frosted glass swollen cylinder shade.
\$250-350

- 121 | Artist Unknown
Adam and Eve
Mixed media
Unsigned
2000 x 1400mm
\$800-1400



119



121



126



128



130



- 122 | M Davis
Capsule
 Photographic print
 Signed, entitled, dated 1995
 280 x 280mm
 \$80-120

- 123 | Victor Passmore
 Untitled
 Etching, 32/70
 Signed with initials and dated 1991.
 \$1200-2000

- 124 | Piqout ware aluminium kettle,
 with timber handle
 \$30-50

- 125 | Set of four Le Petit journal prints,
 framed
 \$100-150

- 126 | Art Deco globe table lamp
 With chromed steel encircling frame.
 \$100-150

- 127 | Two Art Deco revival photograph frames
 \$180-220

- 127A | Two Art deco revival chrome framed
 photograph frames
 \$100-200

- 128 | Paul Giovanopoulos for Rosenthal,
 Studioline vase.
 Millennium Gallery – Ageless Beauty. Limited
 edition 126/499
 \$200-300

- 129 | Eight Limoges ashtrays
 decorated with African wildlife by Legale for
 Maison de Famille.
 \$80-100

- 130 | Two Art Deco Smiths mantel clocks.
 One cream and brown bakelite, the other
 brown
 \$250-350

- 131 | Chrome Spitfire fighter plane ashtray
 and Demley cast aluminium table lighter
 modelled as a plane
 \$40-60

- 132 | Crown Devon Art Deco dish,
 lanceolate shape with side handles
 \$80-150

- 133 | Portuguese Arts and Crafts stoneware two
 handled vase
 \$40-80

- 134 | Two stainless steel spirit flasks with
 leather covers
 \$20-30

- 135 | Edwardian English ceramic water jug and
 basin set
 decorated with nymphs and elves. Hairline
 crack.
 \$150-250

- 136 | Jonathon Wilde simulated bronze figure
 \$200-250

- 137 | Pair of table lamps
 with star ball glass shades raised on slender
 chrome columns from Lucite plinth bases.
 \$400-500

- 138 | Venetian glass cockerel
 \$400-600

- 138A | Large Italian glass vase
 decorated with a patchwork of bright colours.
 Engraved signature
 \$450-650

- 139 | Floor lamp with five lights
 supported on graduated height chrome rods
 with frosted glass squat spherical shades.
 \$350-500



137

- 140 | Art Deco chrome and rosewood cigarette box
\$200-300



138

- 141 | Artist unknown
Carmen
Oil on board
640 x 490mm
\$200-300

- 142 | Artist Unknown
Musical piece
\$200-300

- 143 | Tortoiseshell framed table mirror
\$250-300

- 144 | Keith Murray matt green vase.
quat shouldered shape 3820. Marked with facsimile signature and Wedgwood marks. W.270mm, H.170mm.
\$2000-2500

- 145 | Keith Murray straw yellow vase.
Flaring cylindrical with fluted sides raised from a circular foot, shape 4124. Wedgwood mark with KM initials. H.210mm.. Restored
\$600-800

- 146 | Rare Keith Murray moonstone vase.
Ovoid barrel shape 4320, with finely lathe turned walls. Wedgwood mark with KM initials. H.160mm
\$1000-1500



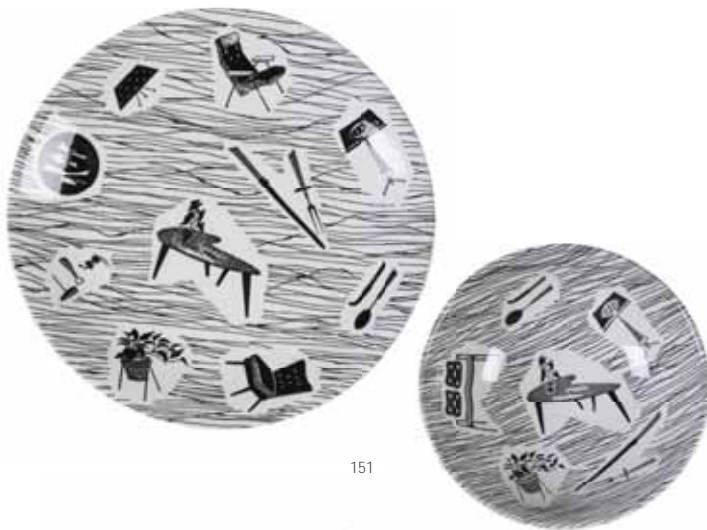
138A



144



146



151



153

- 147 | **Keith Murray Grenade vase.**
Matt pale straw, shape 3765, Wedgwood mark and KM initials, c.1950. H.190mm
\$1200-1500
- 148 | **Pair of Keith Murray moonstone eggcups.**
Cylindrical with flared mouth, raised on turned circular foot with silvered detailing. Wedgwood mark with KM initials. H.75mm
\$100-150
- 149 | **Keith Murray George VI and Queen Elizabeth coronation commemorative cigarette box.**
Shape 3872. The lid embossed with the sovereigns cipher. Wedgwood marks and facsimile signature. Some crazing. 190 x 163mm
\$600-700
- 150 | **John Skeaping for Wedgwood. Lioness and prey.**
White glazed. Printed factory marks and impressed artist's name.
W.340mm
\$900-1000
- 151 | **Homemaker dinner service**
36 pieces, 6 place setting plus milk jug, stand and sugar bowl.
\$1500-2000
- 152 | **Homemaker cake plate**
with chrome central handle
\$1000-1500
- 153 | **Rare Homemaker oblong cake plate**
red colour variant.. This colour is noted as being recorded but not having been sighted in literature on Homemaker ceramics
\$1000-1500
- 153A | **Bernard Roundhill**
Girlie calendar artwork
Watercolour brush and airbrush technique
Signed
310 x 205mm to trim marks
\$300-600
- 153B | **Bernard Roundhill**
Girlie calendar artwork
Watercolour brush and airbrush technique
Signed
325 x 215mm to trim marks
\$300-600
- 153C | **Bernard Roundhill**
Girlie calendar artwork
Watercolour brush and airbrush technique
Signed
327 x 215mm to trim marks
\$300-600

- 154 | **Bernard Roundhill**
 Girlie calendar artwork
 Watercolour brush and airbrush technique
 Signed
 327 x 217mm to trim marks
 \$300-600
- 155 | **Bernard Roundhill**
 Girlie calendar artwork
 Watercolour brush and airbrush technique
 Signed
 305 x 205mm to trim marks
 \$300-600
- 156 | **Bernard Roundhill**
 Girlie calendar artwork
 Watercolour brush and airbrush technique
 Signed
 325 x 215mm to trim marks
 \$300-500
- 157 | **Bernard Roundhill**
 Girlie calendar artwork
 Watercolour brush and airbrush technique
 Signed
 327 x 215mm to trim marks
 \$280-420
- 158 | **Bernard Roundhill**
 Girlie calendar artwork
 Watercolour brush and airbrush technique
 Signed
 327 x 215mm to trim marks
 \$280-420
- 159 | **Mikasa stoneware harlequin dinner set and coffee service,**
 including colour variants Paprika, Curry and Bronze.
 \$200-300
- 160 | **Scandinavian glass vase.**
 Amorphic beaker form, sapphire blue tint.
 H.200mm
 \$100-150
- 161 | **Murano Mandrazutto facettad walled coffin vase.**
 Plum and amber sommerso. H.200mm
 \$100-150

- 162 | **Pair of Alvar Aalto NV45 chairs.**
 Beech framed with cane wrapped arms, upholstered in natural webbing.
 \$1400-2400



162

- 163 | **Alvar Aalto natural lacquered birch framed armchair and ottoman.**
 With spindle back and sides, loose cushioned webbing seat.
 \$1800-2200

- 164 | **Alvar Aalto for Artek Daybed 710**
 Natural lacquered birch frame, with zebra stripe upholstered mattress 2030 x 920mm
 \$1800-2200

- 165 | **Alvar Aalto for Artek Table 81B and two Chairs model 63**
 Natural lacquered birch L-legs and frame. The chairs with zebra stripe upholstery, the table with white laminate top, 1200 x 750 x 720mm. Designed 1933-35
 \$2000-3000

- 166 | **Alvar Aalto for Artek pair of Model 406 cantilever chairs.**
 Natural birch frame with webbing upholstery. One repaired.
 \$650-1000

- 167

Modulus (Danish) low-line teak sideboard.

Maker's label affixed. c.1950s.

2250 x 765 x 430mm

\$1200-1900
- 170

Antonio Citterio for B&B Italia set of four Baisity 1 armchairs.

Upholstered in Envie and Equi cotton polyester jacquard removable covers. Designed 1989

\$2800-3200
- 173

A teak 1960's G Plan teak lowline sideboard

with three central drawers flanked by cupboards. W2100mm

\$1400-2000
- 168

1960s moulded plywood framed armchair

with black vinyl upholstered cushioned seat and back. Set on ebonized legs terminating in brass cappings.

\$1200-1800
- 171

G-Plan sideboard

with display and cocktail cabinet in the upper section. The drop fronted cocktail cabinet with mirrored interior, flanked by glazed cupboards.

1630 x 1900 x 460mm.

\$2500-3500
- 174

Grey leather three seater couch with loose cushions

\$700-1200
- 169

Charles Rennie McIntosh re-issue by Cassina Argyle chair

Produced 1973. Black ebonized oak with cotton upholstered seat.

After the original for the Argyle Street Tearooms, Glasgow, designed 1897.

\$1500-2000
- 172

Circular coffee table by Matthew Von Sturmer,

with sandblasted glass top raised on three chromium plated legs

\$250-350
- 175

Chrome plated table lamp,

with six balls raised on slender arching stems

\$250-400
- 176

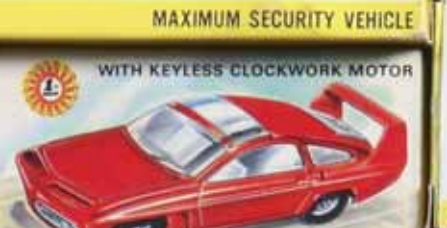
Backhouse design circular teak dining table and four chairs

with black vinyl upholstery

\$250-450



END OF DAY ONE

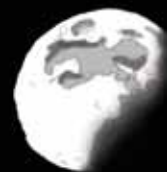


COLLECTABLE TOYS

INCLUDING THE

BARRY WILKES COLLECTION
OF FILM & TV RELATED TOYS

Wednesday 12 December 2007 6.30pm



VIEWING

Fri 7	Dec 9am – 5pm
Sat 8	Dec 11am – 4pm
Sun 9	Dec 11am – 4pm
Mon 10	Dec 9am – 5pm
Tues 11	Dec 9am – 5pm
Wed 12	Dec 9am – 1pm

ENQUIRIES

James Parkinson
james@artandobject.co.nz
021 222 8184
Hamish Coney,
hamish@artandobject.co.nz
021 509 550

BUYER'S PREMIUM

12.5% premium plus GST
effectively 14.06% added
to bids in this auction

Dinky and Corgi cars

- 200 | A selection of 5 loose trucks including:
orange Bedford tip truck with lever activated tray, small green flatbed truck, cream flatbed truck with red hubs, similar model in grey with red covered awning and a later Dinky Supertoy Guy Truck - 5 items in playworn to fair condition.
\$150 - \$250

- 201 | A selection of 4 loose roadsters
including a red Sunbeam - Talbot, a green Alvis, a blue Jaguar, a light blue Fraser Nash 4 items in playworn to fair condition.
\$250 - \$350

- 202 | 2 loose racing cars,
a green MG record car with original decals and a silver Speed of the Wind 2 items in fair condition.
\$120 - \$200



- 203 | 5 boxed corgi cars
including 209 - Riley Pathfinder Police Car with decals and *Join the Corgi Club* leaflet, 412 - Bedford Utlecon Ambulance with decals, 220 - Chevrolet Impala with working spring suspension, 230 - Mercedes Benz 220SE and 211S - Studebaker Golden Hawk with *Join the Corgi Club* leaflet. 5 Items in good to excellent condition, boxes also in good to excellent condition.
\$350 - \$500

Dinky Military Vehicles

- 204 | Dinky Military 6 loose military vehicles
including 2 x 670 - armoured car, 674 - Austin Champ jeep, 676 armoured personnel carrier, 643 army water tanker, 623 army wagon. 6 items in playworn to good condition.
\$200 - \$300

- 205 | 3 boxed field guns
including 692 - 5.5 medium gun, 686 - 25 pounder field gun and 693 - 7.2 howitzer. 3 items in good plus to excellent condition, boxes from fair to good plus.
\$150 - \$250

- 206 | 5 boxed military vehicles and accessories
including 676 - armoured personnel carrier, 688 - field artillery tractor, 673- scout car, 626 - military ambulance and accessory pack 603 a packed of seated army personnel (5 of 12 figures present) Items in fair to excellent condition, boxes from fair to good plus.
\$325 - \$500

- 207 | 2 boxed Dinky Supertoys
660 - Mighty Antar tank transporter and 651 - Centurion Tank with rubber tracks intact. 2 items in good condition in good blue striped boxes.
\$300 - \$450

- 208 | 2 boxed Dinky Supertoys,
689 - medium artillery tractor and 661 recovery tractor with functioning winch mechanism and complete inner packaging. Good to excellent condition in good plus blue striped boxes.
\$300 - \$450



Corgi Major Toys and Dinky Supertoys

- 209 | Corgi Major Toy 1102, Euclid TC-12 Tractor with Dozer Blade.
Light green Tractor is mint with pristine blade and tracks in complete box with inner packaging and excellent box. A superior example.
\$200 - \$300



- 210 | Corgi Major Toy 1111, Massey Ferguson 780 Combine Harvester.
Red harvester is mint with all parts working except for one damaged length of harvester teeth which are intact. Box including complex inner packaging is complete and in excellent condition.
\$200 - \$300



- 211 | 2 boxed Dinky Toys,
563 Heavy Tractor and 401 Coventry Climax fork lift truck. Toys in fair condition in fair boxes.
\$225 - \$350

- 212 | Dinky Supertoy 956, Turntable Fire Escape.
Red fire engine is near mint in condition with ladder mechanism intact and operational (missing cord) Includes die- cut inner packaging and Dinky instruction leaflet in good plus box. A superior example.
\$350 - \$500



- 213 | Dinky Supertoy 964, Elevator Loader.
Large yellow and blue loader is in excellent condition with intact toothed rubber hopper trays, inner packaging is complete in good plus box.
\$150 - \$250

- 214 | **Dinky Supertoy 905, Foden Flat Truck with chains,**
Red truck with grey flatbed and chains intact in near mint condition with decals present. Good plus box. A superior example.
\$250 - \$400



- 215 | **Dinky Supertoy 986, Mighty Antar Low Loader with Propeller.**
Red cab truck, grey trailer and bronze propeller is in mint condition complete with bumper and grille decals. All inner packaging is intact in an excellent box. A superior example.
\$350 - \$500



Early Matchbox Toys – Moko Lesney

- 216 | **5 boxed Models of Yesteryear including:**
8 - light brown 1926 Morris Cowley Bullnose,
2 - red B type London bus,
6 - blue type 35 supercharged Bugatti,
10 - White 1908 Grand Prix Mercedes,
5 - 1929 Blower Bentley.
5 items in near mint condition in good boxes.
\$175 - \$250

- 217 | **4 boxed trucks including**
11 - yellow Erf petrol tanker, 17 - light blue removal truck, 26 - orange Erf cement mixer, 15 - orange heavy 6 wheel truck. 4 near mint items in fair boxes.
\$275 - \$350

- 218 | **5 boxed military and heavy truck**
including 55 D.U.K.W - amphibious vehicle, 62 - General Service Lorry, 16 - light brown 6 wheel trailer, 51 - Albion Chieftain in Portland cement livery. 27 British Trailer co Cab and trailer. 5 items in near mint condition in fair to near mint boxes.
\$275 - \$350

- 219 | **6 mixed boxed Matchbox and Ben bros cars,**
carriages and vans including Benbros TV series Gypsy Caravan, Matchbox 19 - white roadster with driver, 25- blue Dunlop van, 42 - bright yellow Evening News van, 21 - light green London the Glasgow bus, 23 - pale green Berkeley Cavalier caravan. 6 near mint items in fair to near mint boxes.
\$300 - \$400

- 220 | **2 boxed Matchbox Major packs,**
1 - bright yellow tractor and caterpillar trailer, 3 - Antar military transport, Sankey 50 ton Tank transporter and Centurion Mark III tank with complete rubber tracks. 2 items in near mint condition in fair to good boxes. Rare examples.
\$250 - \$350



Matchbox Superfast

- 221 | **5 Matchbox Collectors Catalogues**
from the period 1970 to 1975.
\$50 - \$75

- 222 | **5 boxed Superfast trucks and utilities of late 1960s period including:**
4 - Stake truck,
35 - Merry weather fire engine,
23 - VW camper,
44 - Refrigerator Truck and
58 - Daf girder truck.
Conditions range from good to excellent and boxed fair to excellent.
\$50 - \$75

- 223 | **5 Boxed Superfast of late 1960s & early 1970s period including:**
9 - Boat and trailer,
22 - Freeman intercity commuter,
29 - Racing Mini,
56 - BMC 1800 Pininfarina and
73 - Mercury Commuter.
Conditions range from good to excellent and boxed fair to excellent.
\$50 - \$75

- 224 | **5 Boxed Superfast Hot Rods of the early 1970s period**
including 2 colour variants of #8 - Wildcat dragster, 19 - Road dragster, 36 - Draguar, 62 - Mercury Cougar. Conditions range from good to excellent and boxed fair to excellent.
\$50 - \$75

- 225 | **9 Boxed Superfast sports cars**
of the late 1960s & early 1970s period including
14 - Iso Grifo, 20 - Lamborghini Marzal, 25 - Ford Cortina GT, 27 - Mercedes 230 SL, 33 - Lamborghini Muira, 41 - Ford GT, 45 - Ford Group 6, 52 - Dodge Charger, 68 - Porsche 910.
Conditions range from slightly playworm to good plus in fair boxes.
\$100 - \$150

- 226 | **3 Boxed Superfast racing cars**
34 in pink and yellow variants.
Good plus to mint conditions.
\$40 - \$75

- 227 | **9 Boxed Superfast trucks and cars of the late 1960s to mid 1970s period**
including: 15 - Fork lift truck,
17 - The Londoner bus,
18 - Field car,
46 - Stretcha Fetcha ambulance,
50 - Articulated truck,
55 - Police car,
59 - Fire chief car,
63 - Freeway gas tanker.
Conditions range from excellent to mint in fair to mint boxes.
\$100 - \$150

- 228 | 10 Boxed Superfast cars of the early to mid 1970s period including:
 5 – Lotus Europa, 6 – Mercedes 350SL,
 15 – Volkswagen, 27 – Lamborghini Countach,
 51 – Citroen SM, 54 – Ford Capri,
 60 – Lotus Super 7, 62 – Renault 17TL,
 65 – Saab Sonnet III, 66 – Mazda RX 500.
 Conditions range from excellent to mint
 in good to mint boxes.
 \$125 - \$175

- 229 | 10 Boxed Superfast exotic sports cars from the early to mid 1970s period including:
 3 – Monteverdi Hai, 9 – AMX Javelin,
 24 – Team Matchbox, 30 – Beach Buggy,
 32 – Maserati Bora, 33 – Datsun 120X,
 40 – Guildsman, 41 – Siva Spyder,
 53 – Tanzara, 75 – Alfa.
 Conditions range from good to mint
 in fair to mint boxes.
 \$125 - \$175

- 230 | 10 Boxed Superfast dragsters, hotrods and funny cars from the early to mid 1970s period including: 37 – Soopa Coopa,
 38 – Stingeroo,
 42 – Tyre Fryer,
 43 – Dragon Wheels, 44 – Boss Mustang,
 48 – Pi-eyed Piper, 58 – Woosh-n-push,
 61 – Blue Shark, 64 – Slingshot, 70 – Dragster.
 Conditions range from good to mint
 in fair to excellent boxes.
 \$150 - \$200



- 231 | 6 Boxed Superfast Rola – matics dragsters from the mid 1970s including:
 10 – Piston Popper, 39 – Clipper,
 47 – Beach Hopper, 57 – Wild life Truck,
 67 Hot Rocker, 69 – Turbo Fury.
 Conditions range from excellent to mint
 in excellent to mint boxes.
 \$150 - \$200



- 232 | 10 Boxed Superfast dragsters, hotrods & funny cars from the early to mid 1970s period including: 1 – Mod Rod, 2 – Jeep Hot Rod,
 2 x #4 Gruesome Twosome (variant packaging) ,
 7 – Hairy Hustler, 11 – Flying Bug, 13 – Baja Buggy,
 25 – Mod Tractor, 26 – Big Banger,
 31 – Volks – Dragon.
 Conditions range from good to mint
 in fair to mint boxes.
 \$150 - \$200

Super Kings and Speed Kings

- 233 | 4 Boxed Superkings Trucks including:
 K – 9, Fire Tender, K-10 – Pipe Truck,
 K – 16 Ford LTS Articulated Tanker,
 K-20 Cargo Hauler.
 All in near mint condition in excellent boxes.
 \$100 - \$120



- 234 | 7 Boxed SpeedKings cars including:
 K-25 Boat and Trailer, K-31 Ber tone Runabout,
 K-32 Shovel Nose, K-34 Thunderclap,
 K-35 Lightning, K- 40 Blaze Trailer, K-41 Fuzz
 Buggy. All in near mint condition in good to
 excellent boxes.
 \$150 - \$200



- 235 | 8 Boxed Speedking cars including:
 K-21 Cougar Dragster, K – 37 Sand Cat,
 K-38 Gus's Gulper, K-39 Milligans Mill,
 K-42 Nissan 270X, K-45 Marauder,
 K-47 Easy Rider, K-50 Street Rod.
 All in near mint condition
 in good to excellent boxes.
 \$150 - \$200



- 236 | K-24 Lamborghini Muira.
 Rare variant mint and boxed.
 \$100 - \$200



Film and TV Related Corgi & Dinky from the Barry Wilkes Collection

- 237 | Corgi 261, James Bond Aston Martin DB5
 'Goldfinger'.
 Mint condition in excellent box, all mechanicals
 functioning – includes bandit figure and
 Model makers to James Bond leaflet
 but not secret instructions pack
 \$400 - \$600



- 238 | Dinky 103, Captain Scarlet Spectrum
 Patrol Car.
 Mint in excellent box.
 \$400 - \$600



- 239 | Corgi 266, Chitty Chitty Bang Bang car.
 Mint with complete figures in excellent
 cellophane box complete with internal
 packaging.
 \$300 - \$500



- 240 | Corgi 803, The Beatles Yellow submarine.
Mint with all figures and decals and rare green plastic inner tray. Cellophane fronted box in excellent condition.
\$500 - \$700



- 241 | Dinky 109, Gabriel Model T Forward from the Secret Service.
Mint in good box with inner sleeve.
\$100 - \$200

- 242 | Dinky 106, 'The Prisoner' 'mini-moke'.
Mint with correct decals in excellent box.
\$250 - \$350

- 243 | Corgi 807, Dougal's Car from the Magic Roundabout.
Mint in excellent cellophane box.
\$300 - \$500



- 244 | Corgi Classic, 'World of Wooster' Bentley, complete with figures in blister pack, slightly faded card.
\$100 - \$200

- 245 | Budgie 272, Supercar.
Excellent condition in good box.
\$500 - \$700

- 246 | Dinky 101, Thunderbird 2 & 4.
Mint in fair to good box – one small flap missing and one detached, slight perforation to end.
\$600 - \$800



- 247 | Corgi 336, Toyota 2000GT from 'You Only Live Twice'.
Mint with figures decals and missiles included in excellent box and inner tray.
\$400 - \$600



- 248 | Dinky 352, Ed. Straker's Car from UFO – Yellow variant.
Mint in excellent box.
\$300 - \$400



- 249 | Dinky 104, Spectrum Pursuit Vehicle from Captain Scarlet.
Mint with missile and Captain Scarlet figure intact in good inner and outer box.
\$400 - \$600



- 250 | Dinky 350, Tiny's mini moke from the Enchanted House.
Mint with figure and decal in near mint box.
\$400 - \$600

- 251 | Dinky 108, Sam's car from Joe 90 – Red variant.
Mint in excellent box complete with lapel badge and instructions.
\$350 - \$450



- 252 | Dinky 108, Sam's car from Joe 90 – Silver variant.
Mint in excellent box complete with lapel badge and instructions.
\$350 - \$450



- 253 | Dinky 105, Maximum Security vehicle Captain Scarlet.
Mint with rare radioactive isotope box in good plus box.
\$300 - \$400



- 254 | Corgi 497, Thrush-Buster from the Man from U.N.C.L.E. – blue variant.
Mint with ring in mint box with complete inner packaging.
\$400 - \$600



- 255 | Dinky 107, Stripey the Magic Mini.
Mint and complete with all figures and inner packaging, outer box in good plus condition.
\$400 - \$600

- 256 | Dinky 102, Joe's Car from Joe 90.
Mint condition with excellent packaging including inner tray.
\$400 - \$600



- 257 | 3 Dinky catalogues – nos. 7, 8, 12 and a selection of Thunderbirds, Captain Scarlet and Stingray trading cards.
\$100 - \$200

- 258 | Corgi 268, Black Beauty from the Green Hornet.
Mint with spare missiles and flying radar scanner in excellent inner and outer box.
\$350 - \$450



- 259 | Corgi Gift City 40, The Avengers Bentley and Lotus Elan S2.
Mint and complete with Emma Peel figure and rare umbrellas.
\$350 - \$500



- 260 | Dinky 477, Parsley's Car from 'The Adventures of Parsley'.
Mint with complete inner and outer packaging in excellent box.
\$100 - \$200

- 261 | Corgi 805, Hardy Boys Rolls Royce Silver Ghost.
Mint in cellophane front box and complete with figures in blister pack.
\$300 - \$400

- 262 | Dinky 351, UFO interceptor.
Mint in excellent cellophane box with intact polystyrene inner tray.
\$300 - \$400



- 263 | Dinky 353, Shado 2 Mobile.
Mint is discoloured but good blister pack with functioning missile.
\$300 - \$400

Star Wars Figures

- 264 | 3 Kenner Star Wars figures, mint on card with Collectors coin attached including A wing Pilot, B-Wing Pilot and Imperial Dignitary.
\$150 - \$250

- 265 | 3 Kenner Star Wars figures, mint on card with Collectors coin attached including EV-9D9 robot, Imperial Gunner, Rebel Commando.
\$150 - \$250

- 266 | 6 Kenner Star Wars Ewok figures, mint on card with Collectors coin attached including Paploo x 2, Wicket W Warrick, Romba, Wwrok and Lumat.
\$400 - \$600

- 267 | 3 Kenner Star Wars figures, mint on card with Collectors coin attached including Prune Face, Lando Calrissian, and Sand Skimmer as ridden by Barada figure. Lot also includes Return of the Jedi jigsaw puzzle.
\$250 - \$350

- 268 | Kenner Star Wars figure mint on card with Collectors coin attached. Rare Barada figure with weapon accessory.
\$200 - \$300



- 269 | Kenner Star Wars figure mint on card with Collectors Coin attached.
Rare Amanman and skull staff accessory.
\$450-\$650



- 273 | A Japanese Horikawa tin plate Astronaut robot.
Complete with box. H.300mm. Made in 1963
\$750-\$900



- 276 | A Japanese Horikawa tin plate fighting robot.
Made in 1962.H.290
\$700-\$900



- 270 | Star Wars Darth Vader shaped Collectors case with over 50 figurines including a number of rare figures and many with accessories .
\$500-\$800

- 274 | A Japanese Masudaya tin plate space patrol X-17 flying saucer with floating satellite.
Complete with box. Made in 1958 D.230mm
\$600-\$800

- 277 | A Japanese Masudaya tin plate U.S.A.F Gemini X-5 space shuttle complete with floating figure.
Made in 1962. L.240mm
\$500-\$800

Vintage space Toys & Robots

- 271 | A Japanese Masudaya tin plate space surveillant ship X-07
Circa 1962. L.250mm
\$400-\$600



- 275 | A Japanese Daishin Kogyo tin plate Apollo 11 Eagle lunar module.
Made in 1969 H.210mm
\$600-\$800

- 278 | A space age 1960's Italian moon night light with fitted plastic stand
\$350-500



- 272 | A Japanese tin plate Cragstan Yoshiya flying saucer.
Made in 1959. D.210mm
\$600-\$800



279 | An Adams Radial steam locomotive in 7.1/4 inch scale.
British LSWR 4.4.0 tank, coal fired.
Built in 2004 painted in original colours.
Less than 60 hours running time. This locomotive has run regularly
at the Palmerston north rail club over the last four years
L.1450mm
\$11 000 - \$18 000

Vintage Tin Toys

280 | Japanese 1930s windup tinplate toy
A rare circus toy consisting of a tinplate donkey, celluloid clown balancing a card box.
\$1100 - \$1500

281 | American 1950s plastic toy in original box
Walt Disney's Donald Duck the Skier, complete with skis and poles
\$500 - \$750

282 | American 1950s windup tinplate toy
Walt Disney's Pluto as Parade conductor, superb condition
\$600 - \$900

283 | German (labeled made in US Zone Germany)
1950s tinplate fire engine – Gama brand
\$375 - \$500

284 | American 1930s tinplate fire engine – Kingsbury brand
Complex extension ladder in working order
\$750 - \$1000

285 | American 1930s Tinplate toy – Kingsbury brand
Golden Arrow speed record car with working wind up engine
\$1350 - \$1750

Posters

286 | Rolling Stones
Some Girls poster
\$500 - \$750

287 | Split Enz
Mental Notes PYE records poster
\$900 - \$1500

288 | Split Ends
vintage poster (BW).
Note early spelling of band name
\$800 - \$1200

289 | Split Enz
Enz of the Earth tour poster
\$200 - \$400



The balance of the Music and Film posters are described in the Part 2 of the Catalogue available at ART+OBJECT during the pre-auction viewing.

285 | American 1930s Tinplate toy –
Kingsbury brand
Golden Arrow speed record car with
working wind up engine
L.500mm
\$1350 - \$1750



Part Two – Toys.

The entire catalogue for the second part of over 150 lots of toys will be available at the viewing from Friday 7 December.

Part 2 of the Toy Auction consists of a pot-pourri of mint and boxed toys from the 1960s, 70s, 80s and 90s including:

New Zealand and International Rock'n'Roll posters.

Matchbox and Vivid Imagination boxed toys including Thunderbirds, Captain Scarlet, Joe 90 and Stingray box sets, vehicles and figurines

Sealed Star Wars kitsets and figures

Johnny Lightning cars from an array of TV and film sets

Rare large scale Japanese Sci-Fi kitsets

Robocop, Batman, Toy Story, Teenage Mutant Ninja, Lost in Space, Forbidden Planet and Mars Attacks toys and vehicles

Most lots offered at no reserve – Part 2 Toy catalogue available at ART+OBJECT during pre auction viewing



HAMISH CONEY
Managing Director
hamish@artandobject
021 509 550



BEN PLUMBLY
Director Art
ben@artandobject.co.nz
021 222 8183



JAMES PARKINSON
Director Valuations
james@artandobject.co.nz
021 222 8184



ROSS MILLAR
Director Objects
ross@artandobject.co.nz
021 222 8185

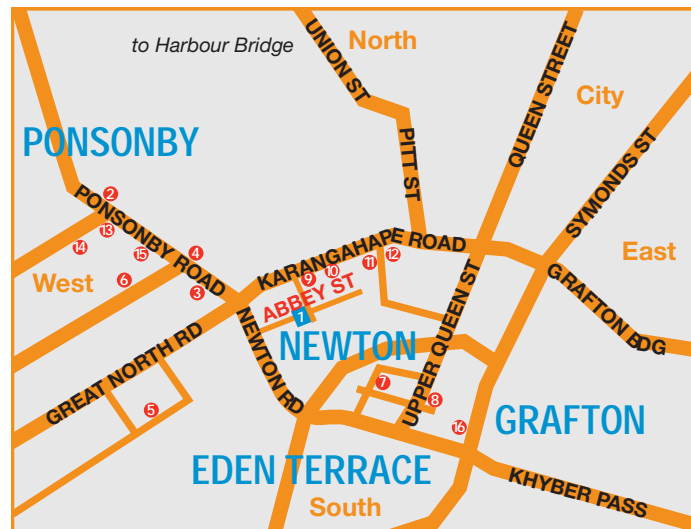


LEIGH MELVILLE
Front of House Manager
leigh@artandobject.co.nz
09 354 4646



HELEN ANDREWS
Front of House Manager
helen@artandobject.co.nz
09 354 4646

- 1 ART+OBJECT
- 2 Masterworks
- 3 Objectspace
- 4 Art Station
- 5 Two Rooms
- 6 Whitespace
- 7 SOCA Gallery
- 8 Roger Williams Contemporary
- 9 STARKWHITE
- 10 Michael Lett
- 11 Ivan Anthony
- 12 ARTSPACE
- 13 Lord Ponsonby's
- 14 Bashford Antiques
- 15 Real Time
- 16 Satellite Gallery



SUBSCRIBE

to the industries leading auction catalogues.

Complete with superb photography, insightful essays and news. Over time these become an important archive of events, art and objects. A subscription guarantees a minimum of six catalogues per annum. [In 2007 A+O published eight catalogues detailing 15 auctions, all additional catalogues are effectively free]

Stay informed and receive the best catalogues from
THE 21ST CENTURY AUCTION HOUSE

SUBSCRIPTION RATES INCLUDING GST + POSTAGE:

NEW ZEALAND	\$100.00
AUSTRALIA	\$160.00
REST OF THE WORLD (AIRMAIL FASTPOST)	\$275.00

NAME:

..... first name last name

ADDRESS:

.....

DAY PHONE: ()

.....

MOBILE: ()

.....

FAX: ()

.....

EMAIL:

.....

Please find my CHEQUE enclosed ☐ or charge my VISA ☐

MASTERCARD ☐

SIGNATURE (required)

CARD NUMBER: EXPIRY DATE: /

POST with cheque to ART+OBJECT PO BOX 68345 NEWTON AUCKLAND 1145 NEW ZEALAND

FAX with credit card details to +64 (09) 354 46 45

DOWNLOAD this form at www.artandobject.co.nz

EMAIL to leigh@artandobject.co.nz

ART+OBJECT 3 ABBEY STREET NEWTON AUCKLAND NEW ZEALAND. PHONE +64 9 354 4646, FREEPHONE 0800 80 60 01



ART + OBJECT CONDITIONS OF SALE

NOTE IT IS ASSUMED THAT ALL BIDDERS AT AUCTION HAVE READ AND AGREED TO THE CONDITIONS DESCRIBED ON THIS PAGE. ART+OBJECT DIRECTORS ARE AVAILABLE DURING THE AUCTION VIEWING TO CLARIFY ANY QUESTIONS YOU MAY HAVE.

1 REGISTRATION: Only registered bidders may bid at auction. You are required to complete a bidding card or absentee bidding form prior to the auction giving your correct name, address and telephone contact + supplementary information such as email addresses that you may wish to supply to ART+OBJECT

2 BIDDING: The highest bidder will be the purchaser subject to the auctioneer accepting the winning bid and any vendor's reserve having been reached. The auctioneer has the right to refuse any bid. If this takes place or in the event of a dispute the auctioneer may call for bids at the previous lowest bid and proceed from this point. Bids advance at sums decreed by the auctioneer unless signaled otherwise by the auctioneer. No bids may be retracted. The auctioneer retains the right to bid on behalf of the vendor up to the reserve figure.

3 RESERVE: Lots are offered and sold subject to the vendor's reserve price being met.

4 LOTS OFFERED AND SOLD AS DESCRIBED AND VIEWED: ART+OBJECT makes all attempts to accurately describe and catalogue lots offered for sale. Notwithstanding this neither the vendor nor ART+OBJECT accepts any liability for errors of description or faults and imperfections whether described in writing or verbally. This applies to questions of authenticity and quality of the item. Buyers are deemed to have inspected the item thoroughly and proceed on their own judgment. The act of bidding is agreed by the buyer to be an indication that they are satisfied on all counts regarding condition and authenticity.

5 BUYERS PREMIUM: The purchaser by bidding acknowledges their acceptance of a buyers premium of 12.5% + Gst on the premium to be added to the hammer price in the event of a successful sale at auction.

6 ART+OBJECT IS AN AGENT FOR A VENDOR: A+O has the right to conduct the sale of an item on behalf of a vendor. This may include withdrawing an item from sale for any reason.

7 PAYMENT: Successful bidders are required to make full payment immediately post sale – being either the day of the sale or the following day. If for any reason payment is delayed then a 20% deposit is required immediately and the balance to 100% required within 3 working days of the sale date. Payment can be made by Eftpos, bank cheque or cash. Cheques must be cleared before items are available for collection. Credit cards are not accepted.

8 FAILURE TO MAKE PAYMENT: If a purchaser fails to make payment as outlined in point 7 above ART+OBJECT may without any advice to the purchaser exercise its right to: a) rescind or stop the sale, b) re offer the lot for sale to an underbidder or at auction. ART+OBJECT reserves the right to pursue the purchaser for any difference in sale proceeds if this course of action is chosen, c) to pursue legal remedy for breach of contract.

9 COLLECTION OF GOODS: Purchased items are to be removed from ART+OBJECT premises immediately after payment or clearance of cheques. Absentee bidders must make provision for the uplifting of purchased items (see instructions on the facing page)

10 BIDDERS OBLIGATIONS: The act of bidding means all bidders acknowledge that they are personally responsible for payment if they are the successful bidder. This includes all registered absentee or telephone bidders. Bidders acting as an agent for a third party must obtain written authority from ART+OBJECT and provide written instructions from any represented party and their express commitment to pay all funds relating to a successful bid by their nominated agent.

11 BIDS UNDER RESERVE & HIGHEST SUBJECT BIDS: When the highest bid is below the vendor's reserve this work may be announced by the auctioneer as sold 'subject to vendor's authority' or some similar phrase. The effect of this announcement is to signify that the highest bidder will be the purchaser at the bid price if the vendor accepts this price. If this highest bid is accepted then the purchaser has entered a contract to purchase the item at the bid price plus any relevant buyers premium.

IMPORTANT ADVICE FOR BUYERS

THE FOLLOWING INFORMATION DOES NOT FORM PART OF THE CONDITIONS OF SALE, HOWEVER BUYERS, PARTICULARLY FIRST TIME BIDDERS ARE RECOMMENDED TO READ THESE NOTES.

(A) BIDDING AT AUCTION: Please ensure your instructions to the auctioneer are clear and easily understood. It is well to understand that during a busy sale with multiple bidders the auctioneer may not be able to see all bids at all times. It is recommended that you raise your bidding number clearly and without hesitation. If your bid is made in error or you have misunderstood the bidding level please advise the auctioneer immediately of your error – prior to the hammer falling. Please note that if you have made a bid and the hammer has fallen and you are the highest bidder you have entered a binding contract to purchase an item at the bid price. New bidders in particular are advised to make themselves known to the sale auctioneer who will assist you with any questions about the conduct of the auction.

(B) ABSENTEE BIDDING: ART+OBJECT welcomes absentee bids once the necessary authority has been completed and lodged with ART+OBJECT. A+O will do all it can to ensure bids are lodged on your behalf but accepts no liability for failure to carry out these bids. See the Absentee bidding form in this catalogue for information on lodging absentee bids. These are accepted up to 2 hours prior to the published auction commencement.

(C) TELEPHONE BIDS: The same conditions apply to telephone bids. It is highly preferable to bid over a landline as the vagaries of cellphone connections may result in disappointment. You will be telephoned prior to your indicated lot arising in the catalogue order. If the phone is engaged or connection impossible the sale will proceed without your bidding. At times during an auction the bidding can be frenetic so you need to be sure you give clear instructions to the person executing your bids. The auctioneer will endeavour to cater to the requirements of phone bidders but cannot wait for a phone bid so your prompt participation is requested.

ABSENTEE BIDDING INSTRUCTIONS

Bidding No. AUCTIONS 13+14 11th+12th DECEMBER 2007
20th CENTURY DESIGN
THE BARRY WILKES COLLECTION

ART+OBJECT

THE 21ST CENTURY
AUCTION HOUSE

This completed and signed form authorizes ART+OBJECT to bid on my behalf at the above mentioned auction for the following lots up to prices indicated below. These bids are to be executed at the lowest price levels possible.

I understand that if successful I will purchase the lot or lots at or below the prices listed on this form and the listed buyers premium for this sale (12.5%) and GST on the buyers premium. I warrant also that I have read and understood and agree to comply with the conditions of sale as printed in the catalogue.

Lot no.	Description	Bid maximum
_____	_____	_____
_____	_____	_____
_____	_____	_____
_____	_____	_____
_____	_____	_____
_____	_____	_____

PAYMENT AND DELIVERY ART+OBJECT will advise me as soon as is practical that I am the successful bidder of the lot or lots described above. I agree to pay immediately on receipt of this advice. Payment will be by cash, cheque or bank transfer. I understand that cheques will need to be cleared before goods can be uplifted or dispatched. I will arrange for collection or dispatch of my purchases. If ART+OBJECT is instructed by me to arrange for packing and dispatch of goods I agree to pay any costs incurred by ART+OBJECT. Note: ART+OBJECT requests that these arrangements are made prior to the auction date to ensure prompt delivery processing.

Please indicate as appropriate by ticking the box: PHONE BID ☐ ABSENTEE BID ☐

MR/MRS/MS: _____ SURNAME: _____

POSTAL ADDRESS: _____

STREET ADDRESS: _____

BUSINESS PHONE: _____ MOBILE: _____

FAX: _____ EMAIL: _____

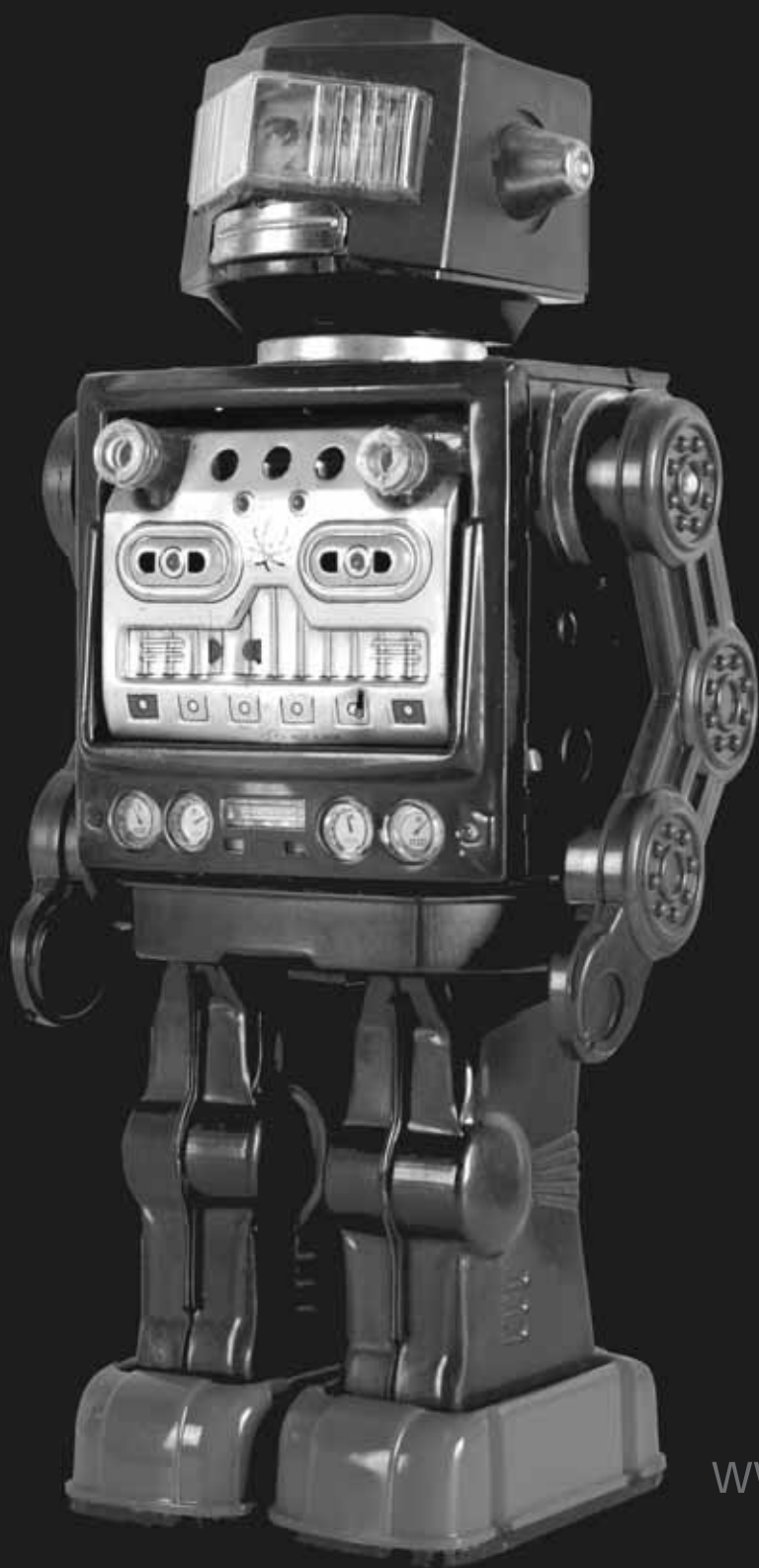
Signed as agreed: _____

To register for Absentee bidding this form must be lodged with ART+OBJECT prior to the published sale time in one of three ways:

1. Fax this completed form to ART+OBJECT +64 9 354 4645
2. Email a printed, signed and scanned form to: info@artandobject.co.nz
3. Post to ART+OBJECT, PO Box 68-345 Newton, Auckland 1145, New Zealand

ART+OBJECT 3 Abbey Street, Newton, Auckland, New Zealand. Telephone +64 9 354 4646, Freephone 0800 80 60 01

www.artandobject.co.nz



www.artandobject.co.nz