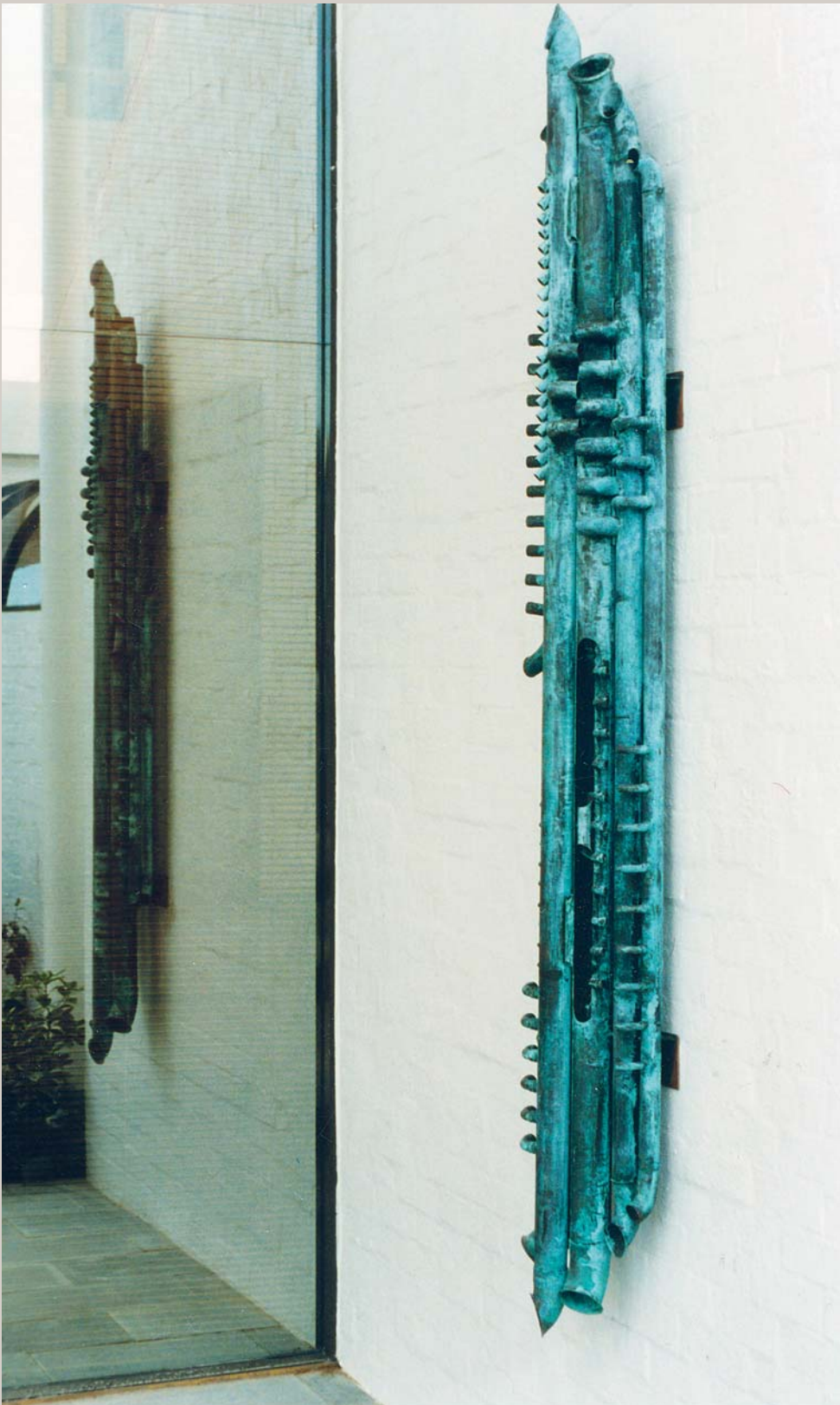


# NEW COLLECTORS

# ART



# MODERN DESIGN



24.09.20

ART+OBJECT

Front cover:

John Middleditch  
*Untitled*

Commissioned by Ron Sang for the  
Newman House, St Heliers in 1986.

Art+Object

3 Abbey Street  
Newton  
Auckland

PO Box 68345  
Wellesley Street  
Auckland 1141

Tel +64 9 354 4646  
Free 0800 806 001  
Fax +64 9 354 4645  
[info@artandobject.co.nz](mailto:info@artandobject.co.nz)  
[www.artandobject.co.nz](http://www.artandobject.co.nz)

instagram: @artandobject  
facebook: Art+Object  
youtube: ArtandObject

Photography: Sam Hartnett  
Design: Fount+via  
Print: Graeme Brazier

Welcome to our third auction of New Collectors art, Modern Design, and Studio Ceramics for 2020.

We are delighted to be offering an exceptional collection of Art Deco ceramics by Keith Murray and Ernest Shufflebotham. Carefully collected and held in storage for many years, our vendor has decided it is time to let them find new homes. A group of works like this is an excellent opportunity for those who may be just starting to build a collection, as well as seasoned collectors who may be looking for particular sizes and shapes.

The Modern Design component of the auction has all come directly from Denmark and includes both the practical and the covetable. We are also happy to offer studio ceramics from the Estate of John Crichton, another wonderful designer who made a wonderful contribution to New Zealand modernism.

We look forward to seeing you for the viewing and hope you enjoy the selection of artworks, furniture and decorative items for auction.

Leigh Melville

# AUCTION HIGHLIGHTS

## NEW COLLECTORS ART

8 Ann Verdourt  
*Luna Czechowska (Modigliani 1917)*  
Realised \$6125

135 Ralph Hotere  
*Polaris*  
Realised \$51 650

59 Colin McCahon  
*Tomorrow will be the same but not as this is*  
Realised \$14 655

87 Robin White  
*Mangaweka*  
Realised \$18 018

124 Bill Culbert  
*Untitled (Decanter)*  
Realised \$3180

138 Stanley Palmer  
*Parua – Forgotten Morning*  
Realised \$27 025

154 Julian Dashper  
*Untitled*  
Realised \$4805

157 Jude Rae  
*Untitled*  
Realised \$11 710



59



8



87



23.06.20

Our June auction realised excellent results in this sale category

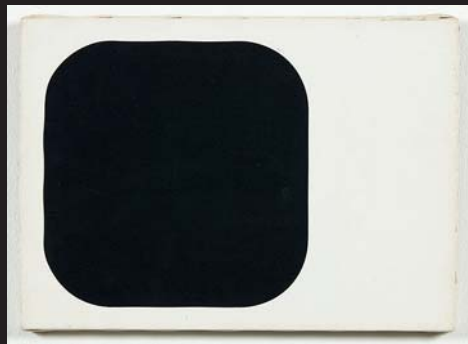
SALE TOTAL \$730 000  
SALES BY VOLUME 75.85%



124



135



154



157

138



# IMPORTANT PAINTINGS & CONTEMPORARY ART

Consignments  
now invited.



Theo Schoon  
*Untitled Mural*  
oil on board, four panels (1982)  
1600 x 4780 x 290mm  
\$160 000 – \$250 000



Ben Plumbly  
ben@artandobject.co.nz  
+64 21 222 8183

26.11.20

artandobject.co.nz



ENTRIES  
INVITED

RARE BOOKS  
& MANUSCRIPTS

02.12.20

Pam Plumbly  
pam@artandobject.co.nz  
+64 21 448 200



Watercolour of a tui, late 18th century, 290 x 245mm. Title on reverse, in a period hand *Tuee*, with a phonetic rendering of the bird's call: *kahidech kaidech*. Estimate \$12 000 – \$15 000



NEW COLLECTORS ART

MODERN DESIGN

STUDIO CERAMICS



## AUCTION

Thursday 24 September  
at 6.00pm  
3 Abbey Street, Newton  
Auckland

## VIEWING

Friday 18 September	9.00am – 5.00pm
Saturday 19	11.00am – 4.00pm
Sunday 20	11.00am – 4.00pm
Monday 21	9.00am – 5.00pm
Tuesday 22	9.00am – 5.00pm
Wednesday 23	9.00am – 5.00pm
Thursday 24	9.00am – 1.00pm

**MODERN  
DESIGN  
& STUDIO  
CERAMICS**



1. A set of six vintage 1960s Arne Jacobsen (Denmark, 1902–1971) 'Series 7' chairs manufactured by Fritz Hansen in mustard yellow. Original 'Fritz Hansen, Made in Denmark' marks to underside of each. First exhibited in 1955, the chair is said to be the most copied chair design in history. \$1200 – \$1800



2. A set of three rectangular nesting tables in rosewood. Designed by Kai Kristiansen (Denmark, 1929– ) for Vildbjerg Møbelfabrik, of solid construction and with rectangular tops. Stamped with manufacturer's initials to underside and marked 'Made in Denmark'. \$800 – \$1400

3. A vintage Poul Henningson (Denmark, 1894 – 1967) designed 'PH3' pendant lamp manufactured for Louis Poulsen in 1958. This example in white with red detailing. \$500 – \$900



4. A vintage Poul Henningson (Denmark, 1894–1967) designed 'PH5' pendant lamp manufactured for Louis Poulsen in 1958. This example in cream with blue detailing. \$600 – \$1000



5. A vintage Arne Jacobsen (Denmark, 1902–1971) designed 'AJ Royal' pendant lamp in gun metal grey, manufactured for Louis Poulsen in 1960. The 'AJ Royal' pendant lamp is one of many designs by the Danish architect for the SAS Royal Hotel in Copenhagen which opened in 1960. \$500 – \$800

6. A vintage Børge Mogensen (Denmark, 1914–1972) coffee table in solid oak. Manufactured by Fredericia Stolefabrik. Of solid construction with a stabilizing bar connecting two L-shaped legs. 550 x 1600 x 600mm \$1000 – \$2000



7. A Verner Panton (Denmark, 1926–1988) 'VP I Flowerpot' pendant lamp, manufactured in lacquered aluminium. 125 x 215 x 215mm \$200 – \$400

8. A small three-drawer 1950s teak chest. 565 x 600 x 300mm \$400 – \$700



9. A vintage Poul Henningson (Denmark, 1894–1967) designed 'PH5' pendant lamp manufactured for Louis Poulsen in 1958. This example in purple with blue detailing. \$600 – \$1000

10. A vintage Poul Henningson (Denmark, 1894–1967) red enamel loft pendant lamp. \$300 – \$600



11. A Verner Panton (Denmark, 1926–1988) designed 'Panthella' floor lamp manufactured by Louis Poulsen (label to underside). Designed in 1971 and manufactured in injection moulded white opal acrylic. 1350mm: height \$700 – \$1400



12. A pair of 1979 lounge chairs in tubular steel and white leather. On five-point anthropomorphic bases. Designer unknown. Manufactured by Fritz Hansen, Denmark. \$1200 – \$2000

13. A 1950s rocking chair in blond oak and teak. Designed by Illum Wikkelsø (Denmark, 1919–1999) for N. Eilersen. \$500 – \$800



14. A modern leather three-seater sofa by Hørup Møbelfabrik. In thick full-grain chocolate leather with gracefully curved slatted-back, dark stained frame. \$2000 – \$3500

- 15 An early 1970s retro two-branched, adjustable standard lamp. Tubular steel with chocolate brown finish. \$200 – \$400



- 16 A 1960s Danish rosewood desk. With four drawers either side flanking the central knee hole. Raised on four chrome legs. \$1200 – \$2000



- 17 A pair of Sigurd Resell (Norway, 1920–2010) 'Falcon' chairs manufactured by Vatne Møbler of Norway, circa 1970. Manufactured in deep green leather. \$2000 – \$3500



- 18 A pair of 'Siesta' chairs designed by Ingmar Relling (Norway, 1920–2002) and manufactured by Westnøa of Norway. Original labels to underside. In brown leather and curved plywood construction. \$1500 – \$2500



- 19 A 1960s Norwegian lounge chair with adjustable reclining position and matching ottoman. Manufactured in brown leather and stained steam bent beechwood by Sunn Expo of Norway (label to underside). \$1200 – \$2000

- 20 Three graduating Royal Copenhagen crystal vases. Each with flared necks. Tallest, 230mm: height. \$200 – \$350

- 21 A 1960s Holmegaard 'smoky' glass vase of fluted form together with a bulbous 1960s Holmegaard 'smoky' glass vase and an unmarked 'smoky' glass biomorphic dish. \$200 – \$350

- 22 Three signed 1960s Holmegaard blue glass vases. One of tall fluted form and the other two heart-shaped. \$200 – \$350

- 23 Four aqua coloured biomorphic glass bowls. Three small and one larger. Two by Holmegaard and two maker unknown. \$150 – \$300

- 24 A fine quality elbow 'Wishbone' chair designed by Illums Bolighus of Denmark (label and blindstamp to underside). Of solid rosewood construction and with leather upholstery. \$300 – \$600



- 25 A pair of Verner Panton (Denmark, 1926–1988) designed 'Topan VP6' pendant lamps. Designed in 1960, this was Panton's first mass-produced lamp design. \$400 – \$700



- 26 An Alvar Aalto (Finland, 1898–1976) 406 lounge chair. Designed in 1939, this example manufactured later and probably made by Artek. Frame in natural birch with dark linen webbing. \$1000 – \$2000

- 27 A 1950s Danish four-drawer chest in rosewood and teak. Designed unknown. Featuring 'Danish Control' plaque to drawer internal and blindstamps to reverse. 760 x 705 x 430mm \$600 – \$1000



- 28 A 1950s Danish bureau in rosewood in the manner of Gunni Omann (Denmark, 1930–2009). Six drawers below a drop-down flap revealing a compartmented, fitted interior. Manufacturer's blind stamp verso. 1160 x 1150 x 460mm \$1000 – \$2000



- 29 A modern Danish three-seater sofa in the manner of Børge Mogensen (Denmark, 1914–1972). Upholstered in tan leather. \$1500 – \$2500





- 30 A classic 1960s 'low line' Danish three-seater sofa. Upholstered in chocolate brown leather.  
\$1500 – \$2500
- 31 A 1960s rectangular coffee table in solid blond oak raised on four hexagonal shaped legs. Manufacturer unknown.  
480 x 1650 x 610mm  
\$500 – \$800



- 32 A three-piece 1960s Scandinavian lounge suite comprising of a three-seater couch and two matching armchairs. Of solid construction, with teak legs and upholstered with black leather cushions.  
\$2000 – \$3500
- 33 A four-drawer blond oak chest from the 1960s. Manufacturer unknown.  
710 x 650 x 43mm  
\$300 – \$500
- 34 A Royal Copenhagen 'Alumina Faience' salt pig. In glazed earthenware with original teak lid.  
160 x 150 x 100mm  
\$100 – \$200
- 35 A Holmegaard Sakura Bordlampe table lamp. Designed by Michael Bang (Denmark, 1942–2013), with fabric shade. Original label to underside.  
Larger size, 600mm: height  
\$250 – \$400
- 36 A Holmegaard Sakura Bordlampe table lamp. Designed by Michael Bang (Denmark, 1942–2013), with fabric shade. Original label to underside.  
Smaller size, 500mm: height  
\$150 – \$250

- 37 A large glass opal pendant lamp designed by Vilhelm Wohlert (Denmark, 1920–2007) in the 1950s with original brass fitting. Original Louis Poulsen label affixed to fitting.  
420 x 380 x 380mm  
\$400 – \$700
- 38 A 'VL45 Radiohus' pendant light in white opal glass designed by Vilhelm Lauritzen (Denmark, 1894–1984) for Louis Poulsen.  
260 x 240 x 240mm  
\$200 – \$300
- 39 A pair of 'Porcelight P14' ceramic pendant lamps designed by Erik Magnussen (Denmark, 1940– ) and manufactured by Louis Poulsen and Bing & Grøndahl. In original boxes.  
\$100 – \$200



- 45 A lidded ice bucket by Jens Quistgaard for Dansk Denmark in teak with black plastic insert, 1950s. Impressed manufacturer's blindstamp to the base.  
390mm: height  
\$400 – \$600
- 46 A teak salad bowl and servers by Jens Quistgaard for Dansk Denmark, circa 1960. Impressed manufacturer's blindstamp to the bowl base.  
295mm: diameter  
\$350 – \$600
- 47 A teak salad bowl and servers by Jens Quistgaard for Dansk Denmark, circa 1960. Impressed manufacturer's blindstamp to the bowl base.  
300mm: diameter  
\$350 – \$600



- 40 An Erik Magnussen (Denmark, 1940– ) for Stelton coffee pot and milk jug and matched sugar bowl.  
\$80 – \$120
- 41 An Arne Jacobsen (Denmark, 1902–1971) 'Cylinda-Line' cocktail shaker for Stelton, originally designed in 1967. Manufactured by Stelton.  
\$200 – \$300
- 42 An Arne Jacobsen (Denmark, 1902–1971) 'Cylina Line' ashtray for Stelton, originally designed in 1964–1967. Manufactured by Stelton.  
\$50 – \$100
- 43 An Arne Jacobsen (Denmark, 1902–1971) 'Cylinda-Line' ice bucket and tongs (in original box) for Stelton, originally designed in 1967. Manufactured by Stelton.  
\$300 – \$500
- 44 Four pieces of 1950s Scandinavian tableware comprising of one salad bowl and three dishes. One with maker's mark.  
\$200 – \$300

- 48 A teak pepper mill by Jens Quistgaard for Dansk Denmark, manufacturer's stamp.  
220mm: height  
\$100 – \$200
- 49 A teak pepper mill by Jens Quistgaard for Dansk Denmark, manufacturer's stamp.  
210mm: height  
\$100 – \$200
- 50 A teak pepper mill by Jens Quistgaard for Dansk Denmark, manufacturer's stamp.  
180mm: height  
\$100 – \$200
- 51 A mid-century carved bird hardwood  
300mm: height  
\$60 – \$120

- 52 Jens Quistgaard for Dansk Denmark  
Two enamelled jugs  
in turquoise and yellow  
manufacturer's stamp to the bases.  
205mm: height  
\$125 – \$300
- 53 Five limited edition decorative 'Christmas'  
plates designed by Bjørn Wiinblad (Denmark,  
1918–2006) for Rosenthal Studio Line. Each  
signed and dated.  
290mm: diameter  
\$300 – \$500
- 54 A Royal Copenhagen Fajance Dish  
45 x 215 x 215mm  
\$100 – \$200
- 55 A Royal Copenhagen Fajance Dish  
45 x 260 x 260mm  
\$125 – \$200
- 56 A Royal Copenhagen Dish decorated with  
flora and fauna  
42 x 230 x 230mm  
\$100 – \$200
- 57 A 1950s biomorphic stoneware table lamp  
585mm: height.  
\$100 – \$200



- 58 A 1960s Scandinavian rosewood upright  
bookcase. With adjustable shelves, set on  
four tubular chrome legs.  
1400 x 1205 x 300mm  
\$1000 – \$2000
- 59 A 1960s Scandinavian rosewood upright  
bookcase. With adjustable shelves, set on  
four tubular chrome legs.  
1400 x 1205 x 300mm  
\$1000 – \$2000
- 60 A set of four stacking dining chairs in  
laminated birch frames and with original  
black cotton webbing in the manner of Alvar  
Aalto (Finland, 1898–1976).  
\$800 – \$1400
- 61 A set of four stacking dining chairs in  
laminated birch frames and with original  
black cotton webbing in the manner of Alvar  
Aalto (Finland, 1898–1976).  
\$800 – \$1400



- 62 A superb soap-washed, solid blond oak  
sideboard designed by Kurt Østervig  
(Denmark, 1912–1986) and manufactured  
by KP Møbler in the 1960s. With two sliding  
panel doors revealing four drawers and two  
adjustable shelves. Original manufacturer's  
label to the verso.  
850 x 1800 x 510mm  
\$2500 – \$4000

- 63 A 1960s retro Tub chair in original black  
vinyl. Of solid construction on four teak  
tapering legs.  
\$500 – \$800
- 64 A Bang and Olufsen Beomaster 7000  
Tuner/Amplifier together with matching  
Beocord 7000 tape deck and two matching  
Beovox speakers.  
\$300 – \$500
- 65 A 1960s green hexagonal glass hanging  
pendant lamp. With clear frosted glass  
interior and original brass fitting.  
\$100 – \$200



- 66 A 1960s Space Age five-branch standard  
lamp. Arc design in chrome on marble base.  
Manufactured in Denmark (label to base).  
1930 x 1800 x 800mm (variable)  
\$1000 – \$2000

- 67 A 1960s retro swivelling lounge chair. On  
chrome five-point base and in original  
turquoise wool-blend fabric.  
\$600 – \$1000



- 68 A fine 1960s Danish rosewood extending  
dining table. With two leaves and on square  
tapering legs.  
740 x 1300 x 900 (not extended)  
\$1200 – \$2000



- 69 A pair of 'Siesta' chairs designed by  
Ingmar Relling (Norway, 1920–2002) and  
manufactured by Westnøf of Norway.  
These are the deluxe models with high backs  
and leather arm rests. In tan leather and  
curved plywood construction.  
\$1500 – \$2500

- 70 An upright bookcase in blond oak designed by Alf Svensson (Sweden, 1929–1992) of Sweden in the 1950s. With six adjustable shelves, original blind stamp verso. 1365 x 1200 x 285mm  
\$1000 – \$2000

- 71 An upright bookcase in blond oak manufactured in the 1950s. With six adjustable shelves. 1430 x 1350 x 360mm  
\$1000 – \$2000

- 72 A two-drawer rosewood and teak 1960s office cabinet with black, slim line metal pulls. Manufacturer unknown. \$400 – \$700



- 73 An unusual 1960s corner cabinet. Curved front, with two sections each containing internal shelves. 1390 x 860 x 610mm  
\$1000 – \$2000



- 74 A nice pair of 1950s teak elbow chairs. Of solid construction with turquoise wool blend upholstery. \$1000 – \$2000
- 75 A set of four 1950s dining chairs. In the manner of Kai Kristiansen (Denmark, 1929–), of solid teak construction and with black vinyl upholstery. \$1200 – \$2000



- 76 A 1950s solid blond oak desk. Three drawers either side of a central knee hole raised on four tapering legs. 740 x 1225 x 610mm  
\$1000 – \$2000

- 77 A set of six dining chairs. In the manner of Alvar Aalto (Finland, 1898–1976) in laminated birch frames with original black cotton webbing and featuring curved back supports. \$700 – \$1500

- 78 A set of six dining chairs. In the manner of Alvar Aalto (Finland, 1898–1976) in laminated birch frames with original black cotton webbing and featuring curved back supports. \$700 – \$1500

- 79 A Danish rosewood tambour door cabinet designed by Kai Kristiansen (Denmark, 1929–) and manufactured by FM Møbler in the 1960s. Sliding doors opening to reveal two full length drawers and an adjustable shelf. Original manufacturer's label to the verso. 760 x 860 x 400mm  
\$1500 – \$3000

- 80 A three-seater 1950s Danish sofa in the manner of Børge Mogensen (Denmark, 1914–1972). With solid oak legs and upholstered in tan leather. \$1000 – \$2000

- 81 A 1950s teak cabinet. With two sliding doors revealing two adjustable shelves. Six drawers raised on a four-point base. 780 x 1220 x 400mm  
\$600 – \$1000

- 82 Three original 1950s Anglepoise lamps in red, brown and white. Each with screw clamp mount. \$150 – \$300

- 83 A pair or vintage Poul Henningson (Denmark, 1894–1967) Louis Poulsen PH3 pendant lamps in red. One exhibiting some fatigue to the top and a damaged ceramic insert. \$400 – \$700

- 84 A 1950s large industrial pendant lamp in white enamel and with built-in diffuser. Complete with original fittings. \$300 – \$500

- 85 A 1950s pendant lamp in white enamel with original diffuser and fittings. \$100 – \$200



85

- 86 An A623 circular table designed by Bruno Mathsson, Piet Hein and Arne Jacobsen and manufactured by Fritz Hansen. The top with white laminate and on a four-point chrome base. Original Fritz Hansen label to underside. 710 x 905 x 905mm  
\$800 – \$1400

- 87 A vintage 'Sirocco' Safari chair in the style of that designed by Arne Norell (Sweden, 1917–1971). In oak and leather. \$800 – \$1400

- 88 A vintage 'Sirocco' Safari chair in the style of that designed by Arne Norell (Sweden, 1917–1971). In canvas and leather. \$500 – \$800



- 89 An oversized white industrial pendant lamp complete with fittings. \$300 – \$500





- 90 A 1960s Danish credenza bookcase in rosewood. With three cupboards in the bottom section revealing adjustable shelves and bookcase to the top section.  
1755 x 1490 x 520mm  
\$2000 – \$3500

- 91 A 1960s vintage Scandinavian floor rug. In aqua marine green and blue and with radiating abstract pattern.  
2060 x 1420mm  
\$500 – \$800



- 92 A 1960s Space Age standard lamp. Pedestal base with tubular chrome column and bright white acrylic mushroom shade.  
1270mm: height.  
\$500 – \$800

- 93 An extending 1960s Danish drop side dining table in teak. Manufactured by Vejle Stole Møbelfabrik. Complete with both drop leaves, fittings and two extra leaves for insertion in the centre.  
\$1000 – \$2000

- 94 A set of six 1950s dining chairs. Of solid construction in oak and teak with striped oatmeal wool blend fabric and splayed back rests.  
\$1000 – \$2000

- 95 A three-piece Model 2208 lounge suite designed by Børge Mogensen (Denmark, 1914–1972) and manufactured by Federicia. Comprising of a two-seater couch and two armchairs upholstered in brown leather.  
\$1500 – \$3000

- 96 An upright 1950s teak tallboy chest of drawers. With six drawers raised on a four-point base.  
1200 x 780 x 420mm  
\$600 – \$1000

- 97 A Danish rosewood cabinet with two doors raised on four tapering legs. Doors open to reveal three drawers on one side and two adjustable shelves. Original Danish Quality Control label to inside.  
800 x 1400 x 420mm  
\$1000 – \$2000



- 98 An upright bookcase in blond oak manufactured in the 1950s. With six adjustable shelves.  
650 x 1150 x 600mm  
\$600 – \$1000

- 99 A 1960s 'flying saucer' pendant light shade in white acrylic.  
\$100 – \$200

- 100 A Charles and Ray Eames Segmented meeting table. Originally designed in 1964. This example manufactured by Herman Miller in light oak veneer and with strong, angular contract base.  
\$1500 – \$3000

- 101 Set of 4 'Jason C3' Chairs by Carl Jacobs manufactured by Kandya. Moulded beech plywood and steel rod legs (1950–1951) Provenance: from the estate of John Crichton.  
\$800 – \$1400



- 102 A set of four cream Charles and Ray Eames DSS (Dining/Side/Stacking) stacking chairs manufactured in fibreglass by Herman Miller (each stamped to underside).  
\$1500 – \$2500

- 103 Two Charles and Ray Eames side chairs in pale yellow manufactured in fibreglass by Herman Miller. One with stacking base and one without.  
\$500 – \$800

- 104 A pair of 'ES 104 Lobby Chairs' designed by Charles & Ray Eames for Vitra with backrest and seat side frames in chrome-plated die-cast aluminium, cushion elements covered in brown leather and armrests upholstered in leather. On five-star base in chrome-plated diecast aluminium.  
\$2000 – \$3500



- 105 Four 'ES 104 Lobby Chairs' designed by Charles & Ray Eames for Vitra with backrest and seat side frames in chrome-plated die-cast aluminium, cushion elements covered in black leather and armrests upholstered in leather. On five-star base in chrome-plated diecast aluminium. Each exhibiting varying states of fatigue.  
\$2000 – \$3000

- 106 A pair of 'ES 104 Lobby Chairs' designed by Charles & Ray Eames for Vitra with backrest and seat side frames in chrome-plated die-cast aluminium, cushion elements covered in black leather and armrests upholstered in leather. On five-star base in chrome-plated diecast aluminium.  
\$2000 – \$3500



- 107 A pair of 1950s Danish upright bookcases by Børge Mogensen (Denmark, 1914–1972), manufactured by FDB. In oak and teak with seven adjustable shelves in one and six in the other, and with original brass mounts.  
1600 x 1220 x 260mm  
\$3000 – \$6000



108 A fine and original pair of Garth Chester  
'Curvesse' chairs, designed in 1944.  
\$10 000 – \$15 000

The 'Curvesse' chair is an icon of New Zealand design. Author Douglas Lloyd-Jenkins, in his book *At Home: A Century of New Zealand Design*, notes that the Curvesse chair was "the first cantilevered plywood chair to appear anywhere in the world ...a progressive high point in local design." Inspired by the Bauhaus and international designers such as Marcel Breuer and Alvar Aalto, the Curvesse chair marries international form to a unique Kiwi DIY, No. 8 wire philosophy. The chair is made from several thin sheets of water-glue softened plywood, with two lengthwise cuts forming the arms, laminated together in a mould and pressed until set, and with solid runners providing a stable base. The failure rate was said to be about one in five. There are no definitive numbers on how many were manufactured, but the chair was ultimately a commercial failure and most estimates suggest less than 500 were produced. Unfortunately a mysterious fire burnt down Chester's workshop and destroyed all the presses and production equipment in the process. This led to a change in direction for the designer who then moved on to designing steel-framed furniture.





## THE DAMIAN BALLE COLLECTION OF CROWN LYNN AND WEDGWOOD STUDIO CERAMICS

109 Ernest Shufflebotham for Crown Lynn  
Handpotted vase  
shape no. 23 with white cream glaze  
stamped factory mark and incised shape  
number to the base  
H. 230mm  
\$700 – \$1200

110 Ernest Shufflebotham for Crown Lynn  
Handpotted vase  
shape no. 59 with white cream glaze  
stamped factory mark and incised shape  
number to the base  
H. 180mm  
\$300 – \$500

111 Ernest Shufflebotham for Crown Lynn  
Small handpotted vase  
shape no. 46 with white cream glaze  
stamped factory mark and incised shape  
number to the base  
H. 125mm  
\$200 – \$400

112 Ernest Shufflebotham for Crown Lynn  
Small handpotted vase  
shape no. 11 with white cream glaze  
stamped factory mark and incised shape  
number to the base  
H. 135mm  
\$200 – \$400

113 Ernest Shufflebotham for Crown Lynn  
Small handpotted vase  
shape no. 23 with white cream glaze  
stamped factory mark and incised shape  
number to the base  
H. 125mm  
\$200 – \$400

114 Ernest Shufflebotham for Crown Lynn  
Small handpotted vase  
shape no. 14 with white cream glaze  
stamped factory mark and incised shape  
number to the base  
H. 130mm  
\$200 – \$400

115 John Parker  
White grooved vase  
porcelain  
impressed marks to the foot  
H. 235mm  
\$400 – \$600

116 Keith Murray for Wedgwood  
Tapering cylindrical vase  
shape 3842 in moonstone glaze  
stamped KM mark to the base  
H. 240mm  
\$800 – \$1200

117 Keith Murray for Wedgwood  
Tapering cylindrical vase  
with sage green glaze and five lathe turned  
bands  
stamped KM mark to the base  
H. 200mm  
\$400 – \$600

118 Keith Murray for Wedgwood  
Footed bowl  
of flared form in glossy white glaze  
stamped KM mark to the base  
D. 170mm  
\$200 – \$400

119 Keith Murray for Wedgwood  
Fruit bowl  
in moonstone glaze  
stamped KM mark to the base  
D. 255mm  
\$300 – \$500

120 Ernest Shufflebotham for Crown Lynn  
Large handpotted vase  
shape no. 24 with white cream glaze  
stamped factory mark and incised shape  
number to the base  
H. 230mm  
\$600 – \$1000

121 Ernest Shufflebotham for Crown Lynn  
Handpotted vase  
shape no. 24 with white glaze  
stamped factory mark and incised shape  
number to the base  
H. 180mm  
\$400 – \$600

122 Ernest Shufflebotham for Crown Lynn  
Small handpotted vase  
shape no. 24 with white cream glaze  
stamped factory mark and incised shape  
number to the base  
H. 130mm  
\$200 – \$400

123 Ernest Shufflebotham for Crown Lynn  
Handpotted spherical vase  
shape no. 14 with white cream glaze  
stamped factory mark and incised shape  
number to the base  
H. 175mm  
\$400 – \$600

124 Ernest Shufflebotham for Crown Lynn  
Small handpotted vase  
shape no. 15 with white cream glaze  
stamped factory mark and incised shape  
number to the base  
H. 125mm  
\$200 – \$400

125 Ernest Shufflebotham for Crown Lynn  
Handpotted vase  
shape no. 15 with white cream glaze  
stamped factory mark and incised shape  
number to the base  
H. 175mm  
\$400 – \$600

126 Ernest Shufflebotham for Crown Lynn  
Rare handpotted cylindrical footed vase  
shape no. 3 with white cream glaze  
stamped factory mark and incised shape  
number to the base  
H. 230mm  
\$600 – \$1000



127 Ernest Shufflebotham for Crown Lynn  
Small handpotted cylindrical vase  
rare shape no. 3 with white cream glaze  
stamped factory mark and incised shape  
number to the base  
H. 125mm  
\$200 – \$400

128 Ernest Shufflebotham for Crown Lynn  
Rare handpotted footed vase  
shape no. 21 with white cream glaze  
stamped factory mark and incised shape  
number to the base  
H. 230mm  
\$600 – \$1000

129 Ernest Shufflebotham for Crown Lynn  
Handpotted footed vase  
shape no. 21 with white cream glaze  
stamped factory mark and incised shape  
number to the base  
H. 180mm  
\$300 – \$500

130 Ernest Shufflebotham for Crown Lynn  
Handpotted footed vase  
shape no. 21 with white cream glaze  
stamped factory mark and incised shape  
number to the base  
H. 130mm  
\$200 – \$400

131 Ernest Shufflebotham for Crown Lynn  
Handpotted vase  
shape no. 34 with white cream glaze  
stamped factory mark and incised shape  
number to the base  
H. 180mm  
\$500 – \$800

132 Ernest Shufflebotham for Crown Lynn  
Small handpotted vase  
shape no. 34 with white cream glaze  
stamped factory mark and incised shape  
number to the base  
H. 130mm  
\$200 – \$400

133 Ernest Shufflebotham for Crown Lynn  
Handpotted spherical vase  
shape no. 9 with white cream glaze  
stamped factory mark and incised shape  
number to the base  
H. 145mm  
\$400 – \$600

134 Ernest Shufflebotham for Crown Lynn  
Small handpotted spherical vase  
shape no. 9 with white cream glaze  
stamped factory mark and incised shape  
number to the base  
H. 105mm  
\$200 – \$400

## FURTHER STUDIO POTTERY AND APPLIED ARTS

135



- 135 John Middleditch  
Untitled  
patinated copper  
signed and dated 1986 and inscribed 705  
2600 x 430 x 2500mm  
Provenance:  
Commissioned by Ron Sang for the  
Newman House, St Heliers in 1986.  
Acquired by Ron Sang when the property  
was later sold.  
\$6000 – \$10 000

- 136 John Crichton  
Large and impressive tiled mosaic bowl  
in red, brown, white, purple, yellow, blue,  
aqua, and olive tiles  
D. 570mm  
\$2750 – \$4000
- 137 Elizabeth McClure  
Faux Domestic Science Series  
scientific lab glassware with velvet flocking,  
four pieces  
size variable  
\$2000 – \$3000
- 138 Garry Nash  
Open Bowl  
blown and etched glass  
signed and dated '91 to the base  
200 x 460 x 460mm  
\$500 – \$1000
- 139 Giovanni Glass  
Untitled Vase  
hand-blown glass  
H. 330mm  
\$250 – \$400
- 140 Unknown maker  
Untitled  
blown glass, three pieces  
H. 300mm (tallest)  
\$200 – \$300
- 141 Peter Collis  
Large Red Vase  
red crackle glazed porcelain, ovoid body and  
spire neck  
impressed mark to the base  
H. 620mm  
\$800 – \$1200
- 142 John Parker  
Tall bottle vase  
textured surface  
impressed mark to the foot  
H. 410mm  
\$500 – \$800
- 143 John Parker  
Footed vase  
stoneware with unglazed textured surface to  
the exterior, tenmoku glaze to the interior  
impressed mark to the foot  
H. 180mm  
\$200 – \$400
- 144 John Parker  
Untitled  
glazed ceramic, two pieces (AF)  
H. 225mm (tallest)  
\$200 – \$300
- 145 Moyra Elliott  
Squared tray  
terracotta, the well glazed and painted  
with a colorful design  
W. 390mm  
\$200 – \$400



142



138



- 149 Peter Stichbury  
Trinket box  
porcelain with painted blue design  
to the lid  
D. 830mm  
\$50 – \$100

- 150 Richard Parker  
Shaped vase  
wood fired stoneware  
original potter's label affixed to  
the base  
H. 185mm  
\$300 – \$500

- 151 Warren Tippet  
Set of four mugs  
stoneware with tenmoku glaze  
and wax-resist decoration in blue  
impressed mark to the base  
H. 95mm  
\$100 – \$200

141



148



- 152 Warren Tippet  
Set of four bowls  
glazed stoneware with wax-resist  
decoration  
D. 150  
\$100 – \$200

- 153 Warren Tippet  
A pair of coffee cups  
stoneware with tenmoku glaze  
impressed mark to the base  
H. 95mm  
\$80 – \$120

145



- 146 Chester Nealie  
Handled vase  
anagama fired with shell  
impression to one side  
original potter's label to the base  
H. 165mm  
\$300 – \$400

- 147 Chester Nealie  
Bottle vase  
anagama fired with shell  
impressions  
original potter's label affixed near  
the foot  
H. 165  
\$200 – \$300

- 148 Chester Nealie  
Baluster vase  
wood fired with poured light  
celadon glaze  
H. 245mm  
\$400 – \$600

136



## A STUDIO POTTERY COLLECTION FROM THE ESTATE OF JOHN CRICHTON



163

154 Len Castle  
Four early bowls  
stoneware with shino glaze  
all with impressed mark to the base and  
dated 1960's on affixed label  
D. 160mm  
\$400 – \$600

155 Len Castle  
Early squat spherical vase with three  
apertures  
stoneware with early experimental crackled  
glaze (some losses)  
impressed mark to the base, dated 1963-64  
on affixed label  
H. 160mm  
\$200 – \$400

156 Len Castle  
Tall brushpot  
stoneware with incised concentric bands  
and ash over iron glazes  
impressed mark to the base and dated 1960-  
65 on affixed label  
H. 250mm  
\$400 – \$700

157 Len Castle  
Six conjoined vases  
stoneware with ash over tenmoku glazes  
impressed mark and dates 1960's on affixed  
label  
H. 295mm  
\$500 – \$800

158 Len Castle  
Early jug  
stoneware with iron pitted feldspathic matt  
white glaze  
impressed mark and dated 1960's on affixed  
label  
H. 165mm  
\$200 – \$400

159 Len Castle  
Large rectangular platter  
stoneware with shino glaze and impressed  
decoration  
impressed mark and dated 1960's to affixed  
label  
W. 385mm  
\$800 – \$1200



156

161



- 160 Len Castle  
Large rectangular platter  
stoneware with ash glaze and impressed  
rope decoration  
impressed mark and dated 1960's to affixed  
label  
W. 400mm  
\$600 – \$1000

- 161 Barry Brickell  
Large sculptural vessel  
terracotta with applied anthropomorphic  
details  
unmarked  
H. 385mm  
\$500 – \$1000

- 162 Len Castle and Theo Schoon  
Beaker vase  
stoneware with painted decoration by Theo  
Schoon, c. 1952  
Len Castle impressed mark to the base  
H. 205mm  
Illustrated: Len Castle, *Making the Molecules  
Dance* (Lopdell House Gallery, 2008), p. 115  
\$1000 – \$2000

- 163 Theo Schoon  
Biomorphic bowl  
unglazed vitreous stoneware, 1955  
impressed mark to the base  
W. 195mm  
Note: The clay was loaded with manganese  
dioxide and volcanic ash from Rangitoto  
Island.  
Illustrated: Steve Rumsey, 'Theo Schoon  
– Further notes and photographs', *New  
Zealand Potter*, Volume 28, No. 1, 1986, p. 34  
\$1500 – \$2500

154



160



- 164 Len Castle and John Crichton  
Painted lamp base  
unglazed earthenware painted by John  
Crichton with a tribal design, with electrical  
fittings  
impressed mark to the base  
H. 300mm  
\$1000 – \$2000

159



- 165 Len Castle  
Early bottle vase  
earthenware with poured ash glaze to the  
shoulders  
impressed mark to the base and dated 1954  
on affixed label  
H. 290mm  
Note: See *Len Castle Potter*, p. 23 for a  
similar example.  
\$1200 – \$1800

157



- 166 Len Castle  
Early branch pot  
slab built stoneware with castellated  
corners, grey semi matt talc glaze over  
saturated iron glaze (A/F: firing cracks)  
impressed mark to the base and dated 1960  
on affixed label  
H. 290mm  
\$500 – \$800

- 167 Len Castle  
Early bottle vase  
stoneware with unglazed neck with incised design, ash glaze to the body  
impressed mark and dated 1958 to affixed label  
H. 275mm  
Note: See *Len Castle Potter* p. 26 for a similar example.  
\$500 – \$800
- 168 Len Castle  
Lipped bowl  
stoneware, the well with crackle green glaze with textured amber exterior  
impressed mark to the base and dated 1970's on affixed label  
D. 230mm  
\$400 – \$600
- 169 Len Castle  
Small bowl  
stoneware with green-blue glaze with textured amber exterior  
impressed mark to the base and dated mid-1960's on affixed label  
D. 165mm  
\$150 – \$300
- 170 Len Castle  
Early conical bowl  
thickly potted stoneware, the well with yellow glaze  
impressed mark to the base and dated 1960's on affixed label  
D. 180mm  
\$100 – \$200
- 171 Len Castle  
Early hand-modelled fan-shaped vase  
stoneware with pale celadon glaze  
impressed mark and dated early 1960's on affixed label  
W. 220mm  
\$800 – \$1200
- 172 Len Castle  
Small square dish  
stoneware with tenmoku glaze over ash, impressed cross design  
impressed mark to the base and dated 1960's on affixed label  
W. 120mm  
\$150 – \$300
- 173 Len Castle  
Teacup  
stoneware with iron spotted glaze  
impressed mark to the base and dated 1960's on affixed label  
D. 90mm  
\$100 – \$200
- 174 Len Castle  
Small bowl  
stoneware with jun glaze, combed decoration to the rim  
impressed mark to the base  
D. 160mm  
\$200 – \$300
- 175 Len Castle  
Two spherical vases  
wood fired stoneware  
both with impressed mark to the base and dated 1960's on affixed label  
graduating sizes,  
H. 120mm max  
\$150 – \$300
- 176 Len Castle  
Serving bowl  
stoneware with ash glaze, with small applied handles  
impressed mark to the base and dated 1971 on affixed label  
D. 260mm  
\$100 – \$200
- 177 Len Castle  
Trinket box  
porcelain with celadon glaze  
impressed mark to the base and dated 1960's on affixed label  
D. 95mm  
\$120 – \$200
- 178 Len Castle  
Pinched bottle vase  
stoneware with ash glaze  
impressed mark to the base and dated 1970 on affixed label  
H. 185mm  
\$250 – \$500
- 179 Len Castle  
Handled jar  
stoneware with rope impressed decoration  
impressed mark to the base  
H. 240mm  
\$250 – \$500
- 180 Len Castle  
Tall flask  
oxide washed stoneware with semi-matt talc glaze to the interior  
impressed mark and dated 1974 to affixed label  
H. 255mm  
\$400 – \$600
- 181 Len Castle  
Two wine goblets  
stoneware with celadon glaze to the interior  
one with impressed mark, the other dated 1969 to affixed label  
H. 170mm max  
\$200 – \$400





- 182 John Crichton  
Three mosaic bowls  
ceramic tiles on copper backs  
D. 220mm max  
\$300 – \$500

- 183 John Crichton  
Five trivets  
porcelain, four within a cork dish  
D. 150mm max  
\$100 – \$200

164



166



165



180

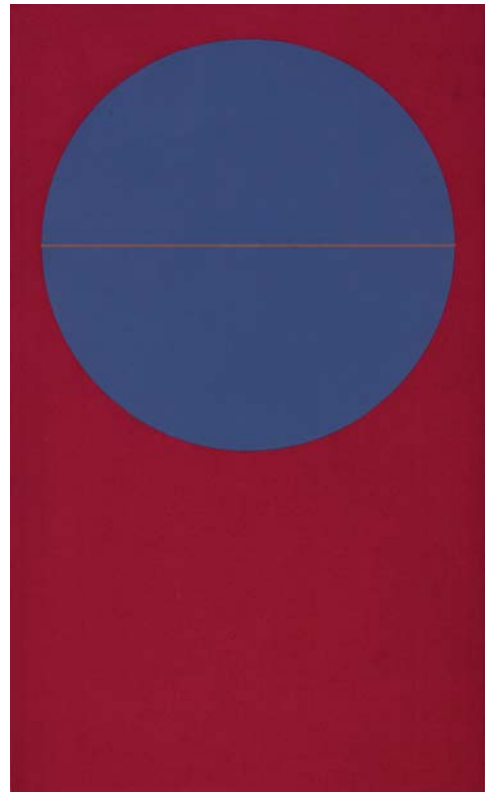


# NEW COLLECTORS

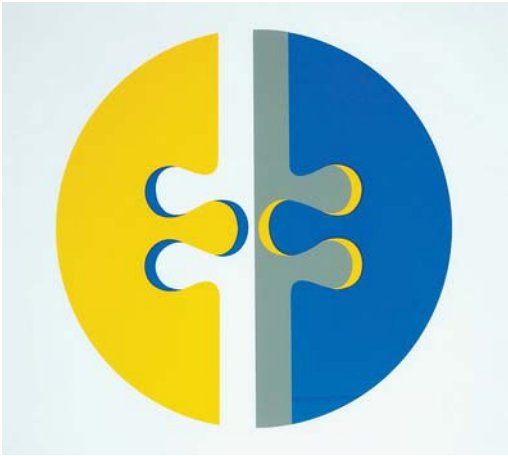
## ART



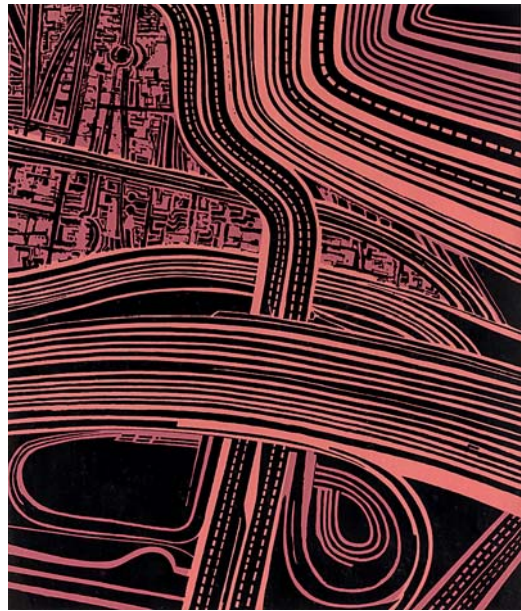
201. Michael Illingworth  
*Tawera*  
silkscreen print from the Barry Lett Galleries  
multiple series  
560 x 760mm  
\$3000 – \$5000



202. Milan Mrkusich  
*Passive Element*  
silkscreen print from the Barry Lett  
Galleries multiple series  
760 x 560mm  
\$2000 – \$3000



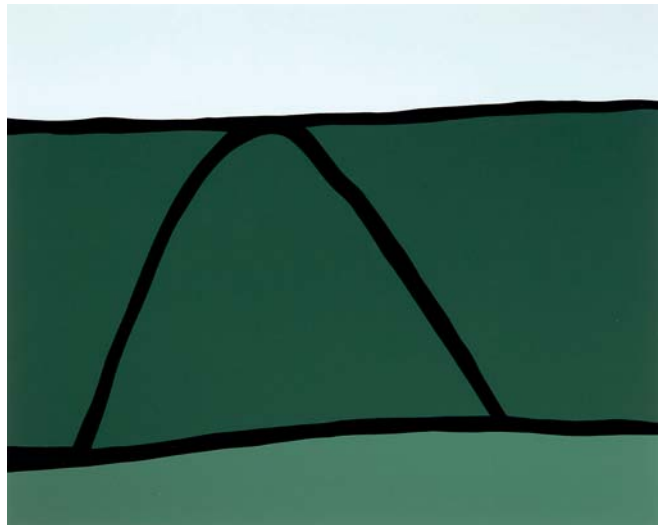
203. Ross Ritchie  
*Three*  
 silkscreen print from the Barry Lett Galleries  
 multiple series  
 760 x 560mm  
 \$500 – \$1000



204. Robert Ellis  
*Motorways*  
 silkscreen print from the Barry Lett Galleries  
 multiple series  
 760 x 560mm  
 \$400 – \$800



205. Michael Smither  
*Wave Invading Rock Pool*  
 silkscreen print from the Barry Lett Galleries  
 multiple series  
 760 x 560mm  
 \$800 – \$1400

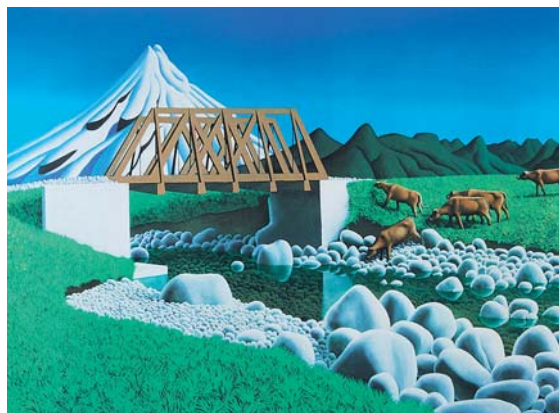


206. Colin McCahon  
*North Otago Landscape*  
 silkscreen print from the Barry Lett Galleries multiples  
 560 x 760mm  
 \$4000 – \$6000

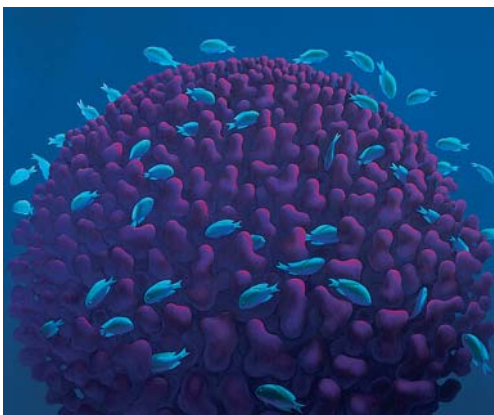




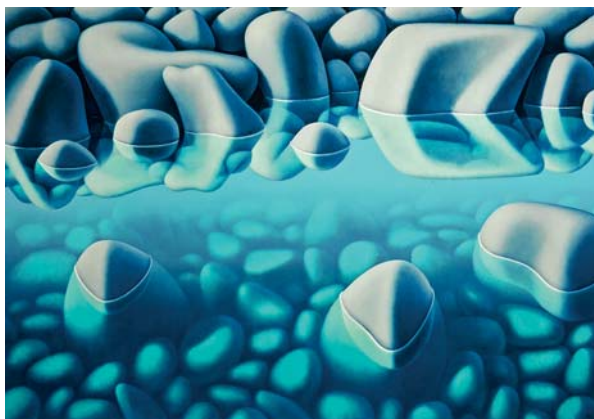
207. Michael Smither  
*Rocks, Tractor, Mountain*  
 screenprint, 79/80  
 signed with artist's initials MDS and dated 2012  
 560 x 760mm  
 \$1600 – \$2600



208. Michael Smither  
*Alfred Road Bridge*  
 screenprint, 37/50  
 signed with artist's initials MDS and dated 2014  
 560 x 760mm  
 \$1600 – \$2600



209. Michael Smither  
*Coral Head with Fish*  
 screenprint, 11/50  
 signed with artist's initials MDS and dated 2013  
 560 x 760mm  
 \$1500 – \$2500



210. Michael Smither  
*Stony River*  
 screenprint, 38/72  
 signed with artist's initials MDS and dated 2011  
 705 x 1000mm  
 \$1600 – \$2600



211. Michael Smither  
*Blue Flipper*  
 screenprint, 47/50  
 signed with artist's initials MDS and dated 2013  
 765 x 560mm  
 \$1600 – \$2600



212. Michael Smither  
*Sarah with Baked Beans*  
 screenprint, 35/80  
 signed with artist's initials MDS and dated '07  
 755 x 550mm  
 \$1500 – \$2500





213. Colin McCahon  
*Tomorrow will be the same but not as this is*  
 silkscreen print with archival ink on BFK Rives  
 Italian art paper, edition of 100  
 signed on the plate; McCahon House  
 chopmark to paper margin  
 1195 x 750mm  
 \$8000 – \$14 000



215. Philippa Blair  
*Lightning Trees*  
 oil on canvas  
 signed and dated '96  
 2480 x 1855mm  
 \$4000 – \$6000



214. Dick Frizzell  
*Mickey to Tiki, Tu Meke*  
 lithograph, 5/50  
 signed and dated '97; title inscribed on the plate  
 590 x 790mm  
 \$800 – \$1200



216. Karl Maughan  
*Kimbolton*  
 screenprint, 52/95  
 signed  
 730 x 1050mm  
 \$3500 – \$5500



217. Andy Warhol  
*Campbell's Soup Can – Chicken Noodle*  
 silkscreen print by Sunday B. Morning  
 inscribed verso published by Sunday B. Morning  
 and fill in your own signature  
 890 x 585mm  
 \$1500 – \$3000



218. Andy Warhol  
*Flowers 11.73*  
 silkscreen print by Sunday B. Morning  
 inscribed verso published by Sunday B. Morning  
 and fill in your own signature  
 900 x 900mm  
 \$1500 – \$2500



219. Andy Warhol  
*Marilyn*  
 silkscreen print by Sunday B. Morning  
 inscribed verso published by Sunday B. Morning  
 and fill in your own signature  
 900 x 900mm  
 \$1500 – \$2500



220. Andy Warhol  
*Mao Pink*  
 silkscreen print by Sunday B. Morning  
 inscribed verso published by Sunday B. Morning  
 and fill in your own signature  
 850 x 750mm  
 \$1500 – \$2500



221. Andy Warhol  
*Marilyn*  
 silkscreen print by Sunday B. Morning  
 inscribed verso published by Sunday B. Morning  
 and fill in your own signature  
 900 x 900mm  
 \$1800 – \$2500





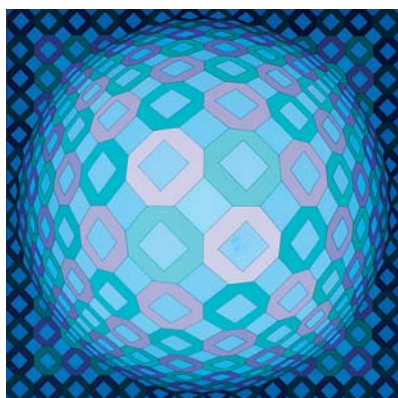
222. John Pule  
*Fenonga Kia Koe*  
 lithograph, 93/100  
 title inscribed, signed and dated 2002  
 760 x 560mm  
 \$1000 – \$2000



223. Robert Ellis  
*Captured and Described*  
 lithograph, 93/100  
 title inscribed, signed and dated 2002  
 760 x 560mm  
 \$1000 – \$2000



224. Michael Smither  
*Untitled*  
 screenprint, 22/50  
 signed with artist's initials MDS and dated '82 lower right  
 630 x 440mm  
 \$1000 – \$2000



225. Victor Vasarely  
*Okta Pos – Great Responses*  
 silkscreen print, 1974  
 signed  
 400 x 400mm  
 \$500 – \$800



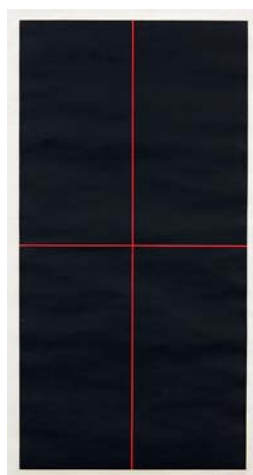
226. Para Matchitt  
*No 8 of 10 Guitars Suite*  
 lithograph, P/P  
 title inscribed, signed and dated 9/2016  
 1400 x 810mm  
 \$1200 – \$2000



227. Devendra Banhart  
*Art/Music/Alchemy*  
 lithograph, AP, 2011  
 title inscribed on original label affixed verso  
 235 x 160mm  
 \$300 – \$600



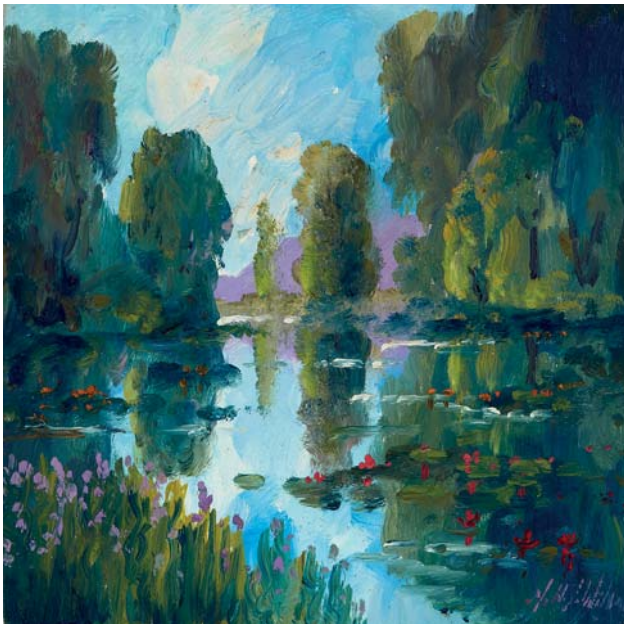
228. Dick Frizzell  
*Danske Tiki*  
 screenprint, PP  
 title inscribed, signed and dated 2005  
 895 x 750mm  
 \$800 – \$1500



229. Ralph Hotere  
*Red on Black*  
 screenprint from the Barry Lett Multiples  
 760 x 560mm  
 \$1000 – \$2000



230. Elliot Collins  
*The People's Republic of Auckland*  
 screenprint, 1/100  
 signed and dated 2011 on original Tim Melville Gallery label affixed verso  
 585 x 415mm  
 \$600 – \$1000



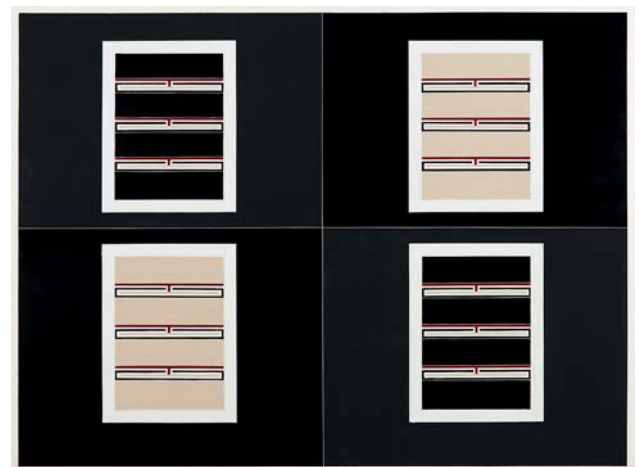
231. Tim Wilson  
*The Lily Pond*  
 oil on canvas  
 signed  
 308 x 308mm  
 \$1500 – \$2500



233. Mike Petre  
*Field Study 70*  
 ink, graphite, oil and acrylic on canvas  
 title inscribed and dated 2006 on original Milford  
 Galleries Dunedin label affixed verso  
 1220 x 1220mm  
 \$7000 – \$10 000

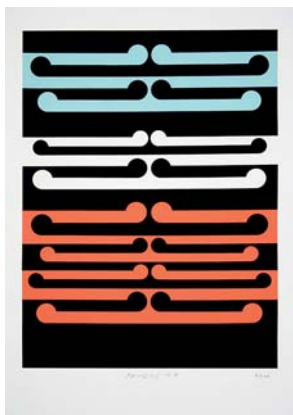


232. Helen Brown  
*Storm in Coromandel Hills*  
 oil on board  
 signed and dated '67; title inscribed verso  
 670 x 905mm  
 \$6000 – \$9000

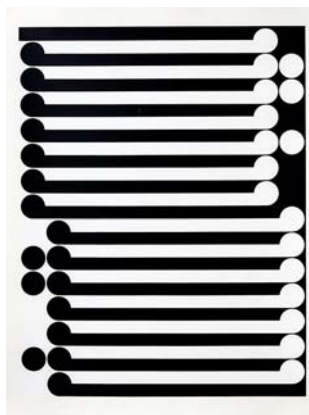


234. Darryn George  
*Matapihi №7*  
 oil on canvas  
 title inscribed, signed and dated 2006 verso  
 1500 x 2015mm  
 \$6000 – \$9000





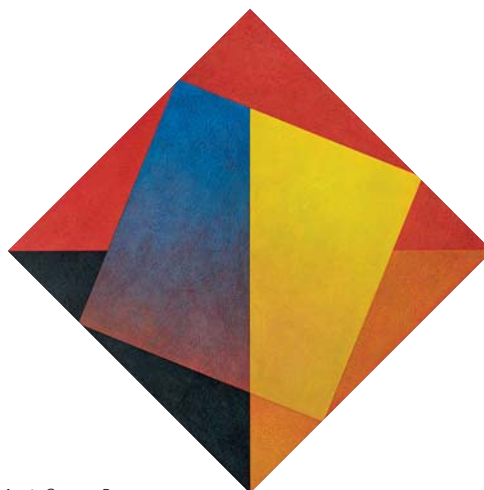
235. Gordon Walters  
*Painting No. 7*  
 screenprint, edition of 100 (2016)  
 title inscribed, Walters Estate blindstamp  
 (under the mount)  
 505 x 395mm  
 \$4000 – \$6000



236. Gordon Walters  
*Untitled (1978)*  
 screenprint on archival paper, edition of 100  
 Walters Estate blindstamp, 2018  
 1055 x 805mm  
 \$5000 – \$7000



237. Heather Straka  
*Roxburgh – Minimalist*  
 oil on linen laid onto board  
 title inscribed, signed and dated 2001 verso  
 900 x 700mm  
 \$5000 – \$8000



238. Roy Good  
*Diamond Matrix Square Rotates*  
 acrylic on canvas  
 title inscribed, signed and dated 2017 verso  
 1100 x 1100mm  
 \$4500 – \$5500



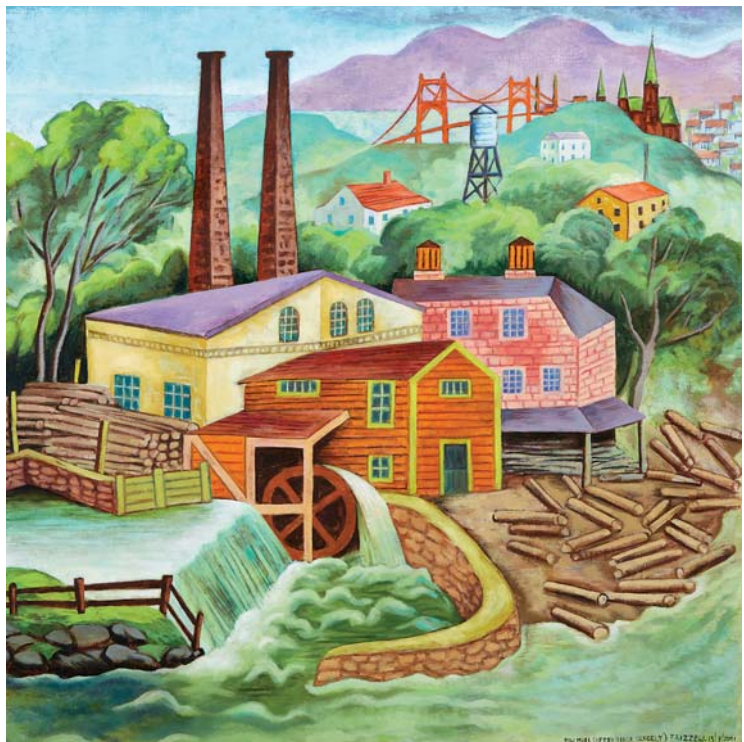
239. Toby Raine  
*Ozzy with Plastic Cocaine Spoon, 1973*  
 oil on Belgian linen  
 title inscribed and inscribed (*Baron Yeti Lives!*), signed and dated 2013 verso  
 605 x 500mm  
 \$5000 – \$8000



240. Toby Raine  
*Crowley Number 5: Late Middle Age, From the '666 Chapter Two' Exhibition, George Fraser Gallery*  
 oil on canvas  
 title inscribed and inscribed (*Baron Yeti Series*), signed and dated 2013 verso  
 505 x 505mm  
 \$3000 – \$5000



241. Pat Hanly  
*Shield from Fire*  
 oil on board  
 signed and dated '60; title inscribed and inscribed 'The Gallery', 64  
 Symonds St, Auckland, Cat No. 5 verso; title inscribed, signed and  
 dated on original Gallery One, London on label affixed verso  
 438 x 426mm  
 \$12 000 – \$18 000

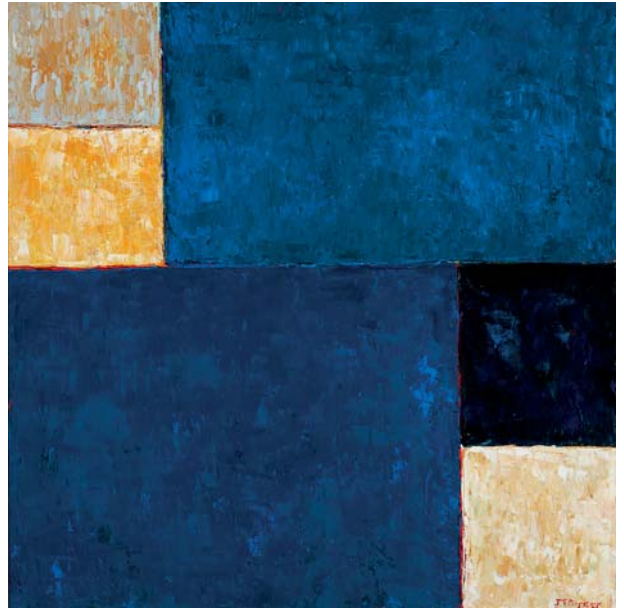


242. Dick Frizzell  
*Sawmill (After Tibor Gergely)*  
 oil on linen  
 title inscribed, signed and dated 15/3/2001; original  
 Gow Langsford Gallery label affixed verso  
 1500 x 1500mm  
 \$45 000 – \$55 000





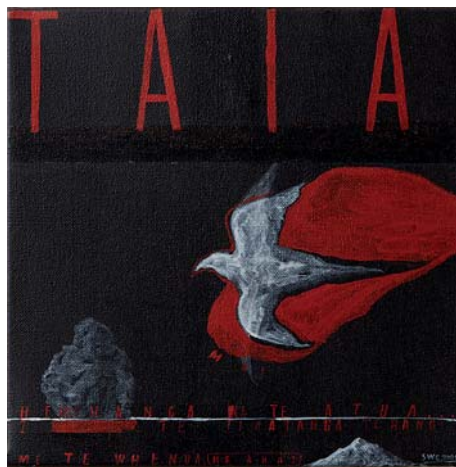
243. Peter Robinson  
*Heart Trinity*  
 oil and bitumen on canvas  
 title inscribed, signed and dated '92 verso  
 1830 x 1520mm  
 \$10 000 – \$15 000



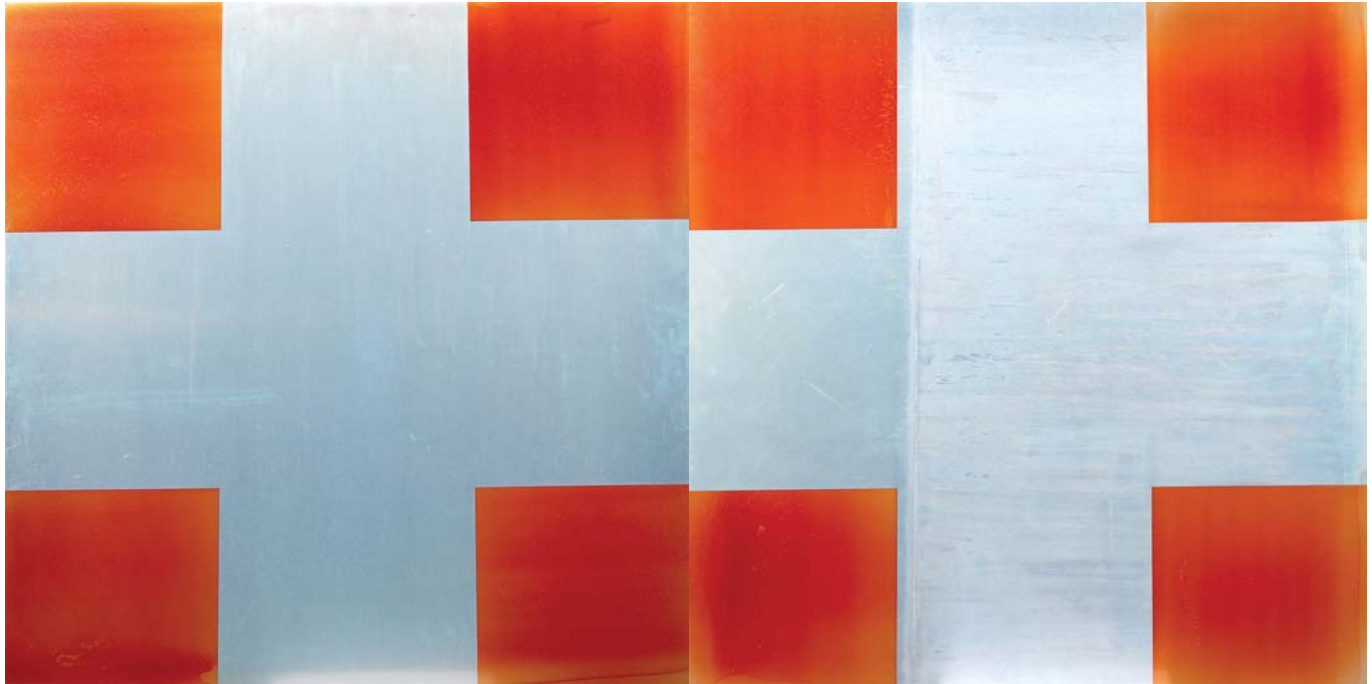
244. John Shotton Parker  
*Blues for Bach*  
 oil on canvas  
 signed; title inscribed and dated 2005 verso  
 995 x 995mm  
 \$4000 – \$6000



245. Ralph Hotere  
*Winter Solstice*  
 mixed media on paper  
 signed and dated '93  
 380 x 279mm  
 \$13 000 – \$18 000



246. Shane Cotton  
*Taia*  
 oil on canvas  
 title inscribed, signed and dated 2000  
 200 x 200mm  
 \$5000 – \$8000



247. Stephen Bambury  
*Being on the One*  
 resin on chemically treated aluminium  
 title inscribed, signed and dated '05 verso  
 1200 x 2400mm: overall  
 \$30 000 – \$45 000



248. Gretchen Albrecht  
*Split Sky – Raincloud*  
 acrylic on canvas  
 title inscribed, signed and dated Aug '72  
 1390 x 1670mm  
 \$25 000 – \$35 000



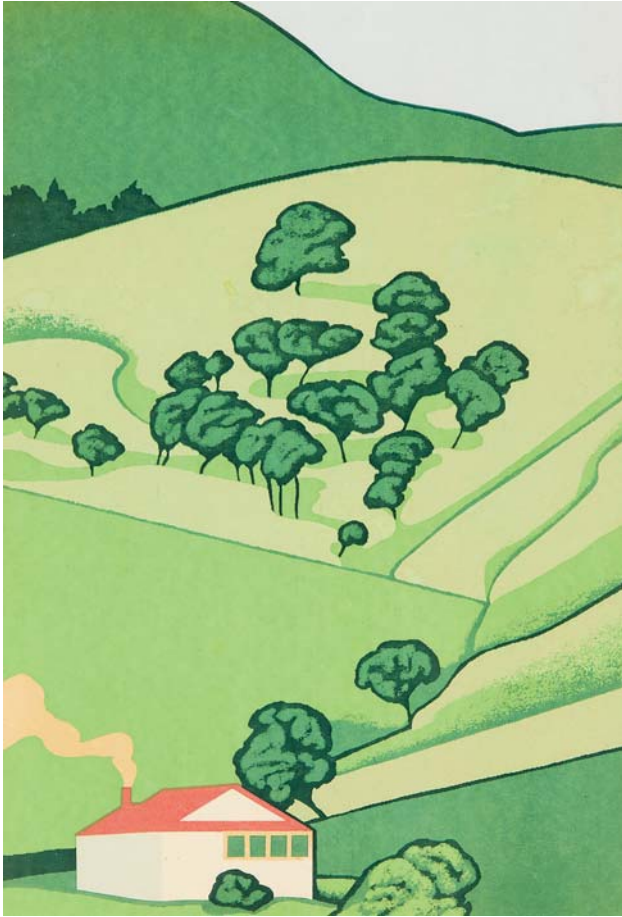


249. Karl Maughan  
*Warrnambool Diptych*  
 oil on canvas, two panels  
 signed and dated 2012 verso  
 1525 x 2845mm: overall  
 \$40 000 – \$60 000



250. Karl Maughan  
*Tarana*  
 oil on linen  
 signed and dated 2012 verso  
 1525 x 1525mm  
 \$20 000 – \$30 000





251. Robin White  
*At the Bay, Portobello*  
 silkscreen print, AP  
 title inscribed, signed and dated '72  
 460 x 310mm  
 \$6000 – \$9000



252. Robin White  
*Florence and Harbour Cone*  
 screenprint, 13/40  
 title inscribed, signed and dated 12/1975  
 642 x 440mm  
 \$10 000 – \$15 000



253. A. Lois White  
*Study for a Mural*  
 ink, watercolour and graphite  
 variously inscribed; inscribed Lois White (Hamilton, 1978)  
 part (grid) mural Hamilton Boys High verso  
 280 x 230mm  
 \$7000 – \$10 000



254. A. Lois White  
*Laughter*  
 watercolour and graphite, c. 1929  
 88 x 174mm  
 \$7000 – \$9500



255. A. Lois White  
*Samson and Delilah*  
 watercolour and graphite  
 signed; title inscribed verso, original Certificate of authenticity  
 signed by the artist's niece Alison Disbrowe affixed verso  
 180 x 210mm  
 \$6000 – \$9000



256. A. Lois White  
*Shepherdess*  
 watercolour and graphite  
 signed on artist's label affixed verso  
 125 x 195mm  
 \$6000 – \$9000

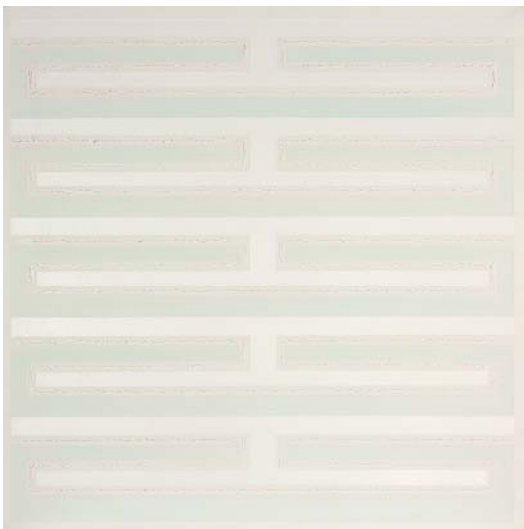




257. Judy Millar  
*Untitled*  
 oil and acrylic on paper  
 titled and dated 2016 on Gow Langsford Gallery label  
 affixed to verso  
 1000 x 705mm  
 \$8000 – \$12 000



258. Peter Madden  
*Our Past Will Become Us*  
 collage and mixed media on soft board  
 title inscribed, signed and dated 2014 verso  
 890 x 687mm  
 \$10 000 – \$15 000



259. Darryn George  
*Ribs – the Whare of Anaru*  
 oil on canvas  
 title inscribed, signed and dated 2004 verso  
 795 x 800mm  
 \$2500 – \$4000



260. Graham Fletcher  
*Untitled (The Conversation)*  
 oil on canvas, 2016  
 title inscribed, signed and dated 2016 verso  
 1300 x 1600mm  
 \$11 000 – \$16 000





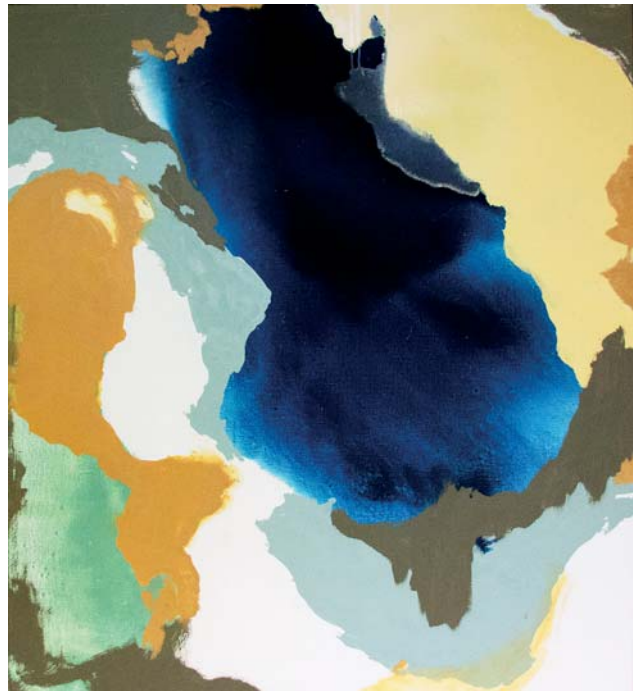
261. Patricia France  
*Untitled – Two Women in an Interior*  
 gouache  
 390 x 4400  
 \$3000 – \$5000



262. Margot Philips  
*Untitled – Landscape*  
 oil on board  
 signed  
 380 x 530mm  
 \$4000 – \$6000



263. Girolamo Nerli  
*Eva and Uncle Tom*  
 oil on canvas (1895)  
 signed  
 500 x 600 cm  
 \$12 000 – \$18 000



264. Amanda Gruenwald  
*Inlet*  
 oil on canvas  
 title inscribed, signed and dated 2014 verso  
 1025 x 910mm  
 \$5000 - \$8000



265. Rohan Wealleans  
*Untitled*  
mixed media on paper  
970 x 680mm



266. Judy Millar  
*Flip (Pink)*  
screenprint, 8/10  
title inscribed, signed and dated 2013  
555 x 760mm  
\$1000 – \$2000



267. Liyen Chong  
*Golden Tipped Cisors*  
gouache and gold foil on paper  
title inscribed, signed and dated 2012 verso  
325 x 240mm  
\$600 – \$900

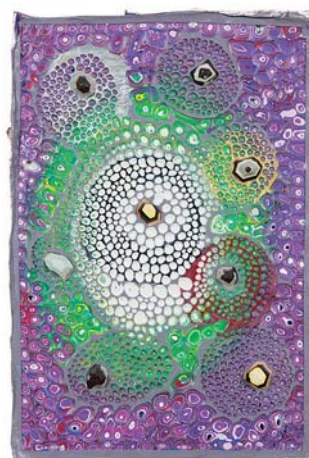


268. Max Gimblett  
*Remembrance*  
silkscreen on lacquered brass quatrefoil, 7 parts  
each numbered, signed and dated 2015 on printed artist  
label verso  
250 x 250mm: each; installation size variable  
\$4000 – \$6000

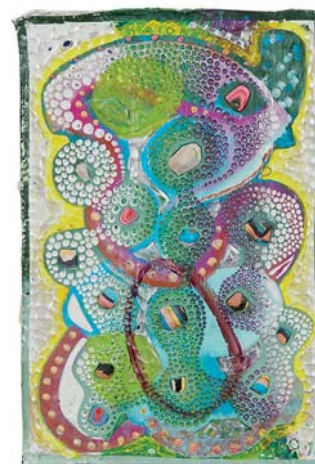




269. Colin McCahon  
*Van Gogh Poems*  
 four lithographs, comprising a frontispiece and three pages of verse  
 title inscribed, signed and dated 1957 on the plate  
 357 x 251mm: each  
 \$6000 – \$8000



270. Rohan Wealleans  
*Untitled III*  
 house paint on canvas (2009)  
 850 x 570mm  
 \$7000 – \$10 000



271. Rohan Wealleans  
*Untitled VI*  
 house paint on canvas (2009)  
 850 x 570mm  
 \$7000 – \$10 000



272. John Reynolds  
*Blue on Blue*  
 oil paint marker and acrylic enamel on canvas  
 title inscribed, signed and dated 2003 verso  
 505 x 405 cm  
 \$2500 – \$3500



273. John Reynolds  
*Soft Target*  
 oil paint marker and acrylic enamel on canvas  
 title inscribed, signed and dated 2003 verso  
 505 x 405 cm  
 \$2500 – \$3500



274. Ralph Hotere  
*Untitled – Nude Study*  
graphite on paper  
signed and dated '69  
500 x 335mm  
\$5000 – \$8000



275. Toss Woollaston  
*Portrait of Bernard Wells*  
ink on paper  
signed  
260 x 204mm  
\$1000 – \$2000



276. Llew Summers  
*Nude*  
graphite on paper  
signed  
590 x 415mm  
\$500 – \$800



277. Terry Stringer  
*Untitled – Nude Study*  
crayon on card mounted between two sheets of Perspex  
signed and dated '87  
510 x 385mm  
\$1000 – \$2000



278. Pablo Picasso  
*Femme vue de Dos*  
etching on wove paper  
signed and dated '56 on the plate  
400 x 300mm  
Illustrated  
Georges Bloch, Pablo Picasso: I – Catalogue of the Printed  
Graphic Work 1904-1967, published Switzerland, 1971  
\$1000 – \$2000

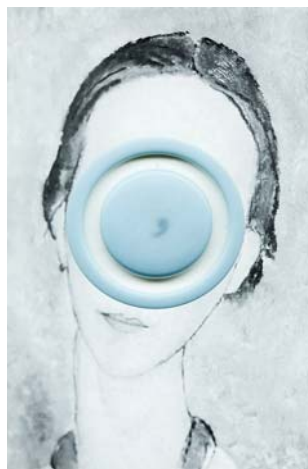


279. Simon Payton  
*Untitled – Reclining Nude*  
graphite on paper  
signed  
780 x 595mm  
\$1000 – \$2000





280. Gavin Hipkins  
*New Age (Whatipu VIII)*  
 archival pigment ink on photo rag paper  
 title inscribed on original McCahon House  
 Residency label, 2008  
 450 x 300mm  
 \$2000 – \$3000



281. Gavin Hipkins  
*Tender Buttons: Painting II*  
 type C print, 3/8  
 title inscribed, signed and dated 2006 verso  
 450 x 300mm  
 \$2000 – \$3000



282. Dane Mitchell  
*Untitled from the exhibition Only the Lonely,*  
*Artspace, June – July '99*  
 mixed media  
 240 x 580mm  
 \$1500 – \$2500



283. Jae Hoon Lee  
*Yellow Cloud*  
 type C print, edition of 250  
 195 x 230mm  
 \$400 – \$800



284. Tracey Moffatt  
*Up in the Sky N°16*  
 colour offset photolithograph, 61/99  
 title inscribed, signed and dated 1997  
 435 x 535mm  
 \$2000 – \$3000



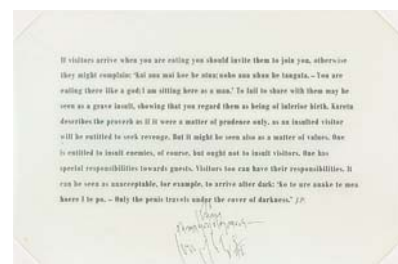
285. Peter Peryer  
*Clothesline*  
 gelatin silver print  
 123 x 188mm  
 \$1000 – \$2000



286. Grahame Sydney  
*Crevasse Probe*  
 Durst lambda digital print on archival paper, 5/10  
 title inscribed, signed and dated 2007  
 490 x 740mm  
 \$1800 – \$2800



287. Song Dong  
*Untitled*  
 type C print  
 425 x 440mm  
 Printed by Artspace, New York  
 \$500 – \$800



288. Joseph Kosuth  
*Untitled*  
 screenprint, 5/75  
 signed  
 315 x 480mm  
 \$500 – \$800



289. Hannah Kidd  
*Molly*  
mild steel, corrugated iron and acrylic paint  
850 x 740 x 680mm  
\$7000 – \$10 000



290. Brendan Wilkinson  
*Untitled*  
mixed media  
180 x 75 x 75mm  
\$400 – \$600



291. Greer Twiss  
*Still Life with Axe, Binoculars and Plumb Bob*  
cast bronze and hickory wood  
signed and dated '89  
700 x 200 x 120mm  
\$3500 – \$5500



292. Greer Twiss  
*Still Life*  
cast bronze  
signed and dated '87 to the base  
115 x 240 x 140mm  
*This sculpture has been donated by the artist to raise funds in support of the Wairau Maori Art Museum (no buyer's premium will apply).*  
\$3000 – \$5000



293. Nina van Duynhoven  
*Untitled - Bronze*  
cast bronze, 1/7  
signed and dated '93  
400 x 320 x 300mm  
\$800 – \$1400



294. Ann Robinson  
*Spiral Vase*  
cast glass, 1/1  
signed and dated N.Z. 2005 to base  
635 x 157 x 150mm  
\$12 000 – \$18 000



295. Ann Robinson  
*Semillon Rim Bowl*  
cast glass  
signed and dated 2013 and inscribed No. 3 to underside  
500mm: diameter  
\$30 000 – \$40 000



296. Séraphine Pick  
*Untitled*  
mixed media on paper  
285 x 185mm  
\$1500 – \$2500



297. Séraphine Pick  
*Untitled*  
mixed media on paper  
285 x 185mm  
\$1500 – \$2500



298. Matt Arbuckle  
*Deep Sea*  
acrylic, dye and oilstick on polyester silk  
signed and dated 2017–18 verso  
1219 x 914mm  
\$3000 – \$5000



299. Stella Corkery  
*Untitled 110*  
oil and spray paint on pre-made canvas stretcher, 2013  
915 x 610mm  
\$2000 – \$3500



300. Et Al.  
*The ten self-imposed troubles*  
mixed media on paper  
title inscribed and inscribed with numbers 1 – 10  
225 x 230mm  
\$1200 – \$2000



301. Richard Killeen and John Reynolds  
*Alfred's Eye*  
mixed media on corrugated card  
title inscribed, signed and dated 1995  
400 x 405mm  
\$4000 – \$6000

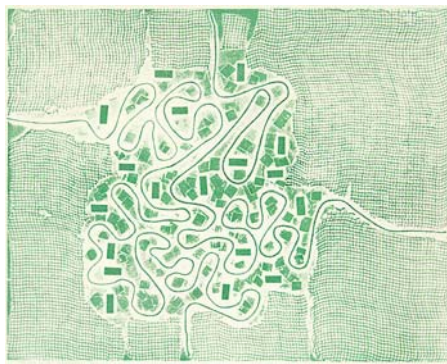


302. Richard Killeen and John Reynolds  
*Alfred's Mantle*  
mixed media on corrugated card  
title inscribed, signed and dated 1995  
400 x 405mm  
\$4000 – \$6000





303. Lily Kelly Napangardi  
*Tali Sand Hills*  
 acrylic on linen, 2014  
 Mimi Art Gallery stamp and title inscribed to the verso;  
 accompanied by certificate of authenticity  
 1010 x 1010mm  
 \$2000 – \$3000



304. Theo Schoon  
*Tribute to Dr Milligan*  
 relief print, 1/25  
 title inscribed, signed and dated '65  
 472 x 600mm  
 \$2000 – \$3000



305. Glen Wolfgramm  
*Māori God*  
 acrylic on canvas  
 title inscribed, signed and dated 2007 verso  
 840 x 1370mm  
 \$1500 – \$2500



306. John Reynolds  
*The Existence of the World is Justified Only As An Aesthetic Phenomenon*  
 tissue, oil pastel, metallic marker and pins on canvas,  
 diptych  
 title inscribed  
 360 x 565mm  
 \$1500 – \$2500



307. Emily Wolfe  
*Untitled*  
 acrylic on canvas  
 signed and dated 2000 verso  
 460 x 660mm  
 \$3000 – \$5000



308. Emily Wolfe  
*Untitled*  
 acrylic on canvas  
 signed and dated 2000 verso  
 460 x 660mm  
 \$3000 – \$5000





309. Ralph Hotere  
*Untitled*  
mixed media on paper  
signed and dated '92  
760 x 573mm  
\$5500 – \$7000



310. Ralph Hotere  
*In a Dream of Snow Falling*  
etching with hand-applied graphite and pastel  
title inscribed, signed and inscribed *Trial print, Ilam '84*  
370 x 267mm  
\$3500 – \$5500



311. Michael Smither  
*Untitled*  
oil on board  
signed with artist's initials MDS and dated '61 verso  
735 x 505mm  
\$5000 – \$8000



312. Heather Straka  
*Patent Monsieur*  
oil on linen laid onto board  
title inscribed, signed and dated 1999 verso  
1205 x 542mm  
\$4000 – \$6000



313. John Reynolds  
*Engines and Enigmas I*  
lithograph, 10/20  
title inscribed, signed and dated 2004  
1050 x 748mm  
\$2000 – \$4000



314. Charlotte Graham  
*Kupu Waimaori Tuatahi No. 6*  
ink, shellac and bitumen on paper  
title inscribed, signed and dated 2004 verso  
565 x 785mm  
\$1000 – \$2000



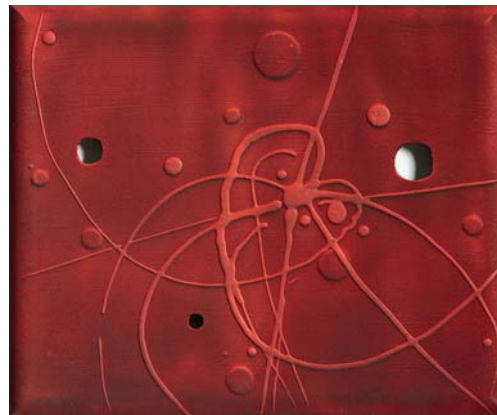
315. Mark Wooller  
*Landmarks*  
 oil on canvas  
 title inscribed, signed and dated 2017 verso  
 850 x 1050mm  
 \$5000 – \$8000



316. Fatu Feu'u  
*Tala Faa Ola*  
 oil on canvas  
 signed and dated '04; title inscribed, signed  
 and dated '04 verso  
 1445 x 1820mm  
 \$6000 – \$9000



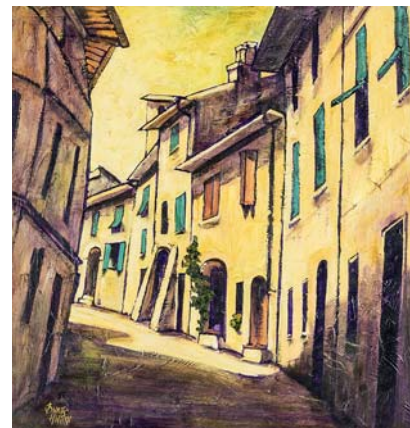
317. Lianne Edwards  
*Yellow Head*  
 recycled postage stamps and stamp hinges on board  
 935 x 625mm  
 Provenance  
 Vavasour Godkin Gallery  
 \$3000 – \$5000



318. Luise Fong  
*Red Shiver*  
 acrylic, dripped gesso and spray enamel on canvas  
 title inscribed, signed and dated 1999 – 2003 verso  
 510 x 610mm  
 \$1500 – \$3000



319. Robyn Kahukiwa  
*Child Hunger/Damaged Potential I*  
 collage on silkscreen print  
 title inscribed, signed and dated 2014  
 500 x 610mm  
 \$2000 – \$3000



320. Bineta Hinton  
*Montalcino*  
 acrylic on board  
 signed; title inscribed and signed on original SOCA Gallery label affixed verso  
 480 x 460 x 40mm  
 \$500 – \$800





321. Andrew Barnes-Graham  
*Amanda*  
 oil on canvas  
 title inscribed, signed and dated 2015 verso  
 1300 x 1150mm  
 \$3000 – \$5000



322. Danijela Vitasovich  
*Triplets*  
 oil on board  
 title inscribed, signed and dated 2005 verso  
 300 x 400 x 45mm  
 \$500 – \$800



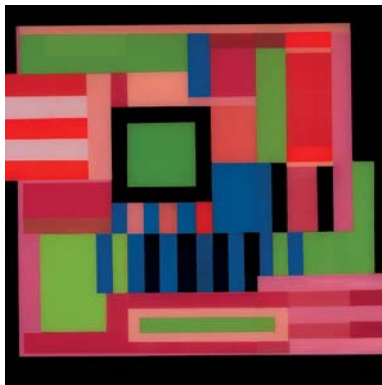
323. Rozi Demant  
*Golden Chains*  
 oil on canvas  
 signed; title inscribed, signed and dated 2017 verso  
 500 x 400mm  
 \$4000 – \$6000



324. Max Gimblett  
*Remembrance*  
 brass quatrefoil  
 inscribed №2548, signed and dated 2015 on printed artist label verso  
 250 x 250mm  
 \$1200 – \$2000



325. Anne Riethmaier  
*Colour Concept 2*  
acrylic and liquid glass on canvas  
signed and dated 2013 verso  
255 x 253mm  
\$400 – \$800



326. Anne Riethmaier  
*Untitled*  
acrylic and liquid glass on board  
signed and dated 2019 verso  
450 x 450 x 85mm  
\$600 – \$900



327. Riduan Tomkins  
*Untitled – 2 Figures*  
graphite and acrylic on paper  
355 x 380mm  
\$300 – \$600



328. Frith Wilkinson  
*Untitled – Abstract Composition*  
oil on canvas  
signed with artist's initials FW and dated '97  
700 x 800 x 85mm  
\$300 – \$600



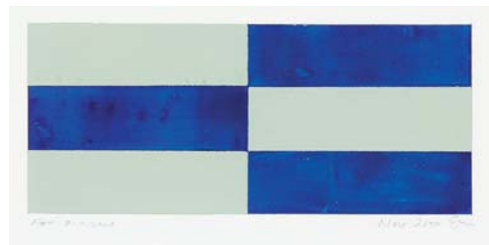
329. Frith Wilkinson  
*Untitled – Abstract Composition*  
oil on canvas  
signed with artist's initials FW and dated '97  
700 x 800 x 85mm  
\$300 – \$600



330. Robert McLeod  
*Untitled – Abstract Composition*  
charcoal, graphite and acrylic on paper  
signed with artist's initials RM and dated 4.9.79  
730 x 550mm  
\$1000 – \$2000



331. Ruth Davey  
*Recital*  
lithograph, 1/20  
title inscribed, signed and dated '84  
177 x 132mm  
\$200 – \$400



332. Simon McIntyre  
*Untitled*  
acrylic on paper  
signed with artist's initials SM and dated Nov 2000,  
inscribed For Marcus  
190 x 280mm  
\$250 – \$500



333. Maree Francis  
*Southwell Chapel*  
pastel and graphite on paper  
signed with artists initials MF; title inscribed,  
signed and inscribed Hamilton 1989 verso  
200 x 290mm  
\$200 – \$400

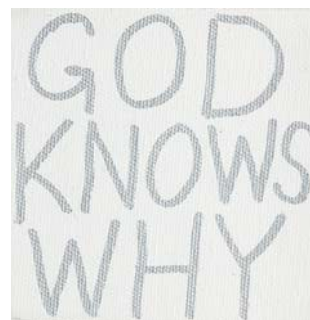




334. John Reynolds  
*Anniversary Acronym №43*  
 paint marker on canvas  
 inscribed Anniversary Acronym №43, signed  
 and dated 2018 in ink verso  
 110 x 110mm  
 \$300 – \$600



335. John Reynolds  
*Multiple №K1/45 (McLeavey sat here)*  
 paint marker on canvas  
 inscribed Multiple №K1/45, signed and  
 dated 2011 in ink verso  
 105 x 105mm  
 \$300 – \$600



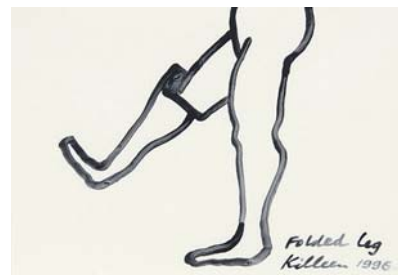
336. John Reynolds  
*Acronyms, Etc. №482 (God knows why)*  
 paint marker on canvas  
 inscribed Acronyms, Etc. №482, signed and  
 dated 2005 in ink verso  
 105 x 105mm  
 \$300 – \$600



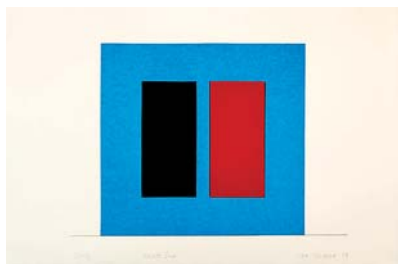
337. Allen Maddox  
*3 and More*  
 lithograph, AP  
 title inscribed, signed with artist's initials  
 AM and dated '86  
 430 x 350mm  
 \$500 – \$1000



338. Agnes Wood  
*Untitled – Figure with Peace Dove*  
 lithograph, 10/17  
 signed  
 380 x 310mm  
 \$300 – \$600



339. Richard Killeen  
*Folded Leg*  
 acrylic on paper  
 title inscribed, signed and dated 1996  
 and inscribed Cat No. 3107  
 348 x 497mm  
 \$800 – \$1400



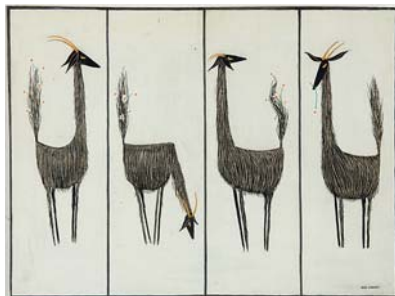
340. Max Gimblett  
*Wing*  
 silkscreen print, 18/40  
 title inscribed, signed and dated '79  
 560 x 770mm  
 \$500 – \$1000



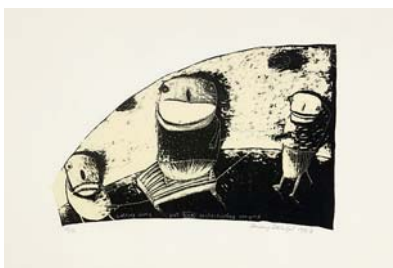
341. Nigel Brown  
*Kiss the Wind*  
 stone lithograph, 22/30  
 title inscribed, signed and dated Auck '83  
 490 x 340mm  
 \$400 – \$800



342. Layla Rudneva-McKay  
*Untitled*  
 oil on canvas  
 350 x 300mm  
 \$1500 – \$2500



343. David Kennedy  
*The Goat - Four Views*  
 gouache on paper laid onto board, circa 1958  
 signed  
 308 x 405mm  
 \$300 – \$600



344. Jenny Dolezel  
*Getting along just fine (entertaining company)*  
 lithograph, 10/12  
 title inscribed on the plate, signed and dated 1987  
 400 x 610mm  
 \$400 – \$800



345. Toss Woollaston  
*Untitled*  
 screenprint  
 signed on the plate and dated '62  
 310 x 400mm  
 \$400 – \$800



346. James Ross  
*Untitled*  
 graphite and pastel on paper  
 signed and dated '77  
 552 x 410mm  
 \$400 – \$800



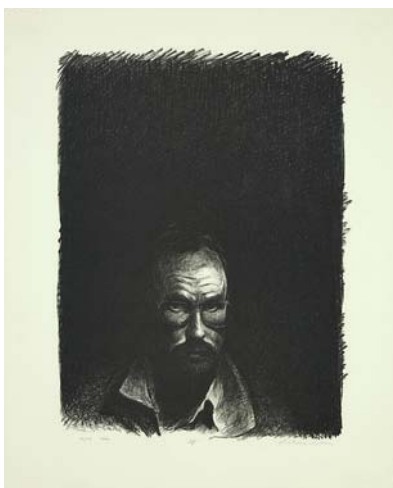
347. Rohan Hartley Mills  
*Untitled*  
 acrylic on canvas  
 title inscribed, signed and dated 2015 verso  
 305 x 225mm  
 \$300 – \$600



348. Melitta Hogg  
*Beachlands No. 12*  
 watercolour  
 signed; title inscribed and signed verso  
 490 x 682mm  
 \$200 – \$400



349. Grahame Sydney  
*Joe 90s Bed*  
 etching, 8/25  
 title inscribed, signed and dated Sept. 1981  
 198 x 251mm  
 \$1000 – \$2000



- 349A. Grahame Sydney  
*Self*  
 lithograph, 12/20  
 title inscribed, signed and dated 1992  
 695 x 565mm  
 \$1500 – \$2500



350. Grahame Sydney  
*Yellowhammer*  
 etching, 16/40  
 title inscribed, signed and dated 13.3.77  
 115 x 226mm  
 \$600 – \$900





351. Peter O'Hagan  
*Sunflowers and Lace Curtain, Venice*  
 watercolour and gouache  
 signed  
 410 x 320mm  
 \$3000 – \$5000



352. Peter O'Hagan  
*Sunflowers at Barry Ferguson's, Oyster Bay, Long Island, New York*  
 watercolour and gouache  
 signed  
 410 x 370mm  
 \$3000 – \$5000



353. Paul Coney  
*Untitled - Anemones*  
 watercolour  
 signed and dated '83  
 535 x 735mm  
 \$600 – \$1200



354. Gary Bukovnik (America, 1947 – )  
*Anticipation*  
 watercolour on paper, two panels  
 title inscribed, signed and dated 2001  
 750 x 2070mm: overall  
 \$4000 – \$7000

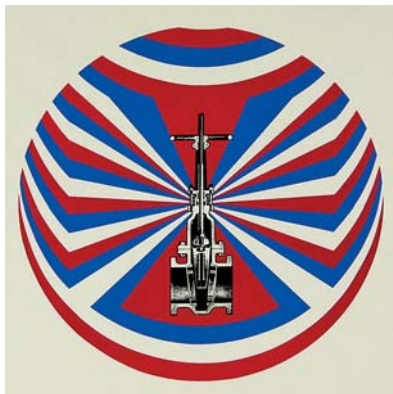


354a. Grahame Sydney  
*Barrier 1*  
 durst lambda digital print on archival paper, 4/10  
 title inscribed, signed and dated 2007  
 505 x 735mm  
 \$1800 – \$2800

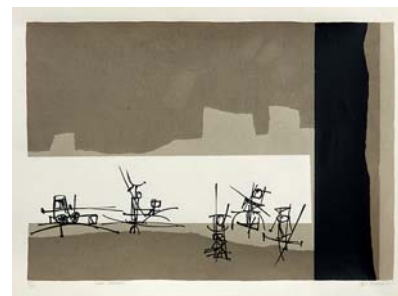




355. Dick Frizzell  
*Figure with Taiaha*  
 lithograph, 20/50  
 title inscribed, signed and dated 2/11/97  
 510 x 365mm  
 \$500 – \$800



356. Mervyn Williams  
*Midas Finds his Soul*  
 silkscreen print from the Barry Lett Galleries  
 multiple series  
 760 x 560mm  
 \$300 – \$600



357. Ted Dutch  
*War Games*  
 silkscreen print, 27/28  
 title inscribed, signed and dated '67  
 440 x 585mm  
 \$600 – \$900



358. Ted Dutch  
*War Machine*  
 silkscreen print, 27/28  
 title inscribed, signed and dated '67  
 440 x 585mm  
 \$600 – \$900



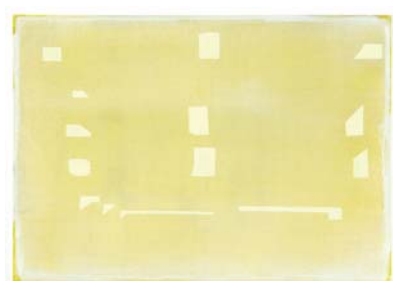
359. Sara Hughes  
*Data Attraction I*  
 screenprint, 16/25  
 title inscribed, signed and dated 2006  
 510 x 730mm  
 \$1000 – \$2000



360. Richard Killeen  
*From the Museum*  
 lithograph, 93/100  
 title inscribed, signed and dated 2002  
 570 x 760mm  
 \$1000 – \$2000



361. Pat Hanly  
*Hope Vessel and Heart*  
 lithograph, 16/25  
 title inscribed, signed and dated '86  
 340 x 410mm  
 \$1200 – \$2000



362. Simon McIntyre  
*The Local No. 29*  
 acrylic on paper  
 title inscribed, signed and dated 2010 on  
 original Tim Melville Gallery label affixed verso  
 90 x 210mm  
 \$400 – \$800



363. Philippa Blair  
*Home is Where the Heart Is*  
 etching, AP  
 title inscribed, signed and dated 1982  
 290 x 285mm  
 \$200 – \$350



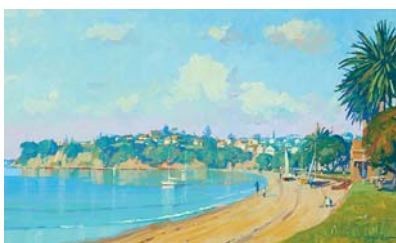
364. Bridgit Bidwill  
*Beam*  
 oil and mixed media on canvas  
 signed and dated '04; title inscribed, signed  
 and dated 2004 verso  
 500 x 600mm  
 \$800 – \$1500



365. G. Oliver  
*Untitled – Welsh Landscape*  
 oil on canvas board  
 signed  
 170 x 250mm  
 \$400 – \$700



366. J. M. Madden  
*New Zealand Lake Scene*  
 ink and wash and bodycolour on paper  
 signed and dated 1888  
 220 x 295mm  
 \$400 – \$800



367. Simon Williams  
*The Bay, St Heliers*  
 oil on board  
 signed; title inscribed verso  
 440 x 735mm  
 \$1500 – \$3000



368. John Castle  
*Over the Rooftops*  
 ink and watercolour on board  
 signed; title inscribed on original McGregor  
 Wright Gallery label affixed verso  
 192 x 211mm  
 \$300 – \$600



369. Alan Taylor  
*Year of the Child*  
 oil on board  
 title inscribed verso  
 400 x 500mm  
 \$600 – \$1200



370. Natalie Findlay  
*Untitled – Boats in the Marina*  
 oil on board  
 signed and dated '65  
 595 x 550mm  
 \$300 – \$600



371. Tony Gibb  
*Come In Here Dear Boy, Have a Cigar, You're  
 Going To Go Far*  
 crayon on paper  
 title inscribed, signed and dated '84  
 615 x 740mm  
 \$700 – \$1500



372. Lesley A Campbell  
*Shearing Gang, Hastings*  
 oil on canvas  
 signed, title inscribed on original McGregor  
 Wright Gallery label affixed verso  
 440 x 590mm  
 \$1000 – \$2000





373. Toss Woollaston  
*Patrick Lucas*  
 screenprint from the Barry Lett Multiples  
 560 x 760mm  
 \$400 – \$800



374. Philippa Blair  
*Checkmate: Alitalia*  
 etching, 3/25  
 title inscribed, signed and dated 1988  
 195 x 150mm  
 \$100 – \$200



375. Malcolm Warr  
*West Coast I, II, III, Waitakere, near Te Ahua Pt, Towards Whatipu*  
 silkscreen prints, triptych, 3/40  
 title inscribed, signed and dated '86  
 \$400 – \$700

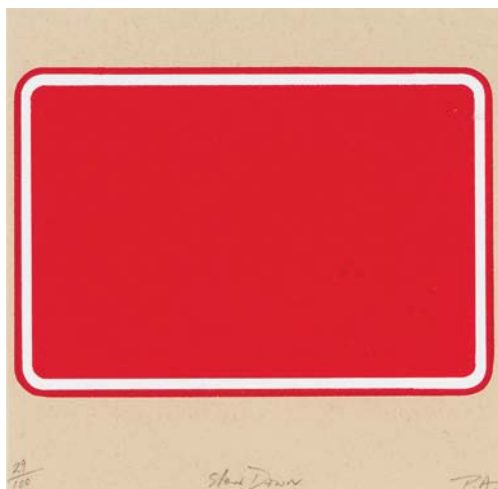




376. Dick Frizzell  
*Sign*  
 screenprint, 42/100  
 title inscribed, signed and dated '19  
 715 x 495mm  
 \$1000 – \$2000



377. John Pule  
*Sofia*  
 lithograph, 1/30  
 title inscribed, signed and dated 2002  
 410 x 290mm  
 \$600 – \$1000



378. Peter Atkins  
*Slow Down*  
 lithograph, 29/100  
 title inscribed and signed with  
 artist's initials P.A.  
 160 x 162mm  
 Provenance  
 Purchased Tolarno Galleries,  
 Melbourne  
 \$300 – \$500

## CONDITIONS OF SALE

Please note: it is assumed that all bidders at auction have read and agreed to the conditions described on this page. Art+Object directors are available during the auction viewing to clarify any questions you may have.

**1. Registration:** Only registered bidders may bid at auction. You are required to complete a bidding card or absentee bidding form prior to the auction giving your correct name, address and telephone contact and supplementary information such as email addresses that you may wish to supply to Art+Object.

**2. Bidding:** The highest bidder will be the purchaser subject to the auctioneer accepting the winning bid and any vendor's reserve having been reached. The auctioneer has the right to refuse any bid. If this takes place or in the event of a dispute the auctioneer may call for bids at the previous lowest bid and proceed from this point. Bids advance at sums decreed by the auctioneer unless signaled otherwise by the auctioneer. No bids may be retracted. The auctioneer retains the right to bid on behalf of the vendor up to the reserve figure.

**3. Reserve:** Lots are offered and sold subject to the vendor's reserve price being met.

**4. Lots offered and sold as described and viewed:** Art+Object makes all attempts to accurately describe and catalogue lots offered for sale. Notwithstanding this neither the vendor nor Art+Object accepts any liability for errors of description or faults and imperfections whether described in writing or verbally. This applies to questions of authenticity and quality of the item. Buyers are deemed to have inspected the item thoroughly and proceed on their own judgment. The act of bidding is agreed by the buyer to be an indication that they are satisfied on all counts regarding condition and authenticity.

**5. Buyers premium:** The purchaser by bidding acknowledges their acceptance of a buyers premium of 17.5% + GST to be added to the hammer price in the event of a successful sale at auction.

**6. Art+Object is an agent for a vendor:** A+O has the right to conduct the sale of an item on behalf of a vendor. This may include withdrawing an item from sale for any reason.

**7. Payment:** Successful bidders are required to make full payment immediately post sale – being either the day of the sale or the following day. If for any reason payment is delayed then a 20% deposit is required immediately and the balance to 100% required within 3 working days of the sale date. We accept payment via Eftpos, cash (under \$5000.00) and direct credit. Visa and MasterCard credit cards are accepted, however a surcharge of 2.5% will be added. Payments over \$10,000.00 must be made by direct credit to our bank account. Our bank details for deposits are 12-3107-0062934-00. Please use your buyer number as transaction reference. Please refer to point 7 of the Conditions of Sale in the catalogue for a detailed description of payment terms.

**8. Failure to make payment:** If a purchaser fails to make payment as outlined in point 7 above Art+Object may without any advice to the purchaser exercise its right to: a) rescind or stop the sale, b) re offer the lot for sale to an underbidder or at auction. Art+Object reserves the right to pursue the purchaser for any difference in sale proceeds if this course of action is chosen, c) to pursue legal remedy for breach of contract.

**9. Collection of goods:** Purchased items are to be removed from Art+Object premises immediately after payment or clearance of cheques. Absentee bidders must make provision for the uplifting of purchased items (see instructions on the facing page).

**10. Bidders obligations:** The act of bidding means all bidders acknowledge that they are personally responsible for payment if they are the successful bidder. This includes all registered absentee or telephone bidders. Bidders acting as an agent for a third party must obtain written authority from Art+Object and provide written instructions from any represented party and their express commitment to pay all funds relating to a successful bid by their nominated agent.

**11. Bids under reserve & highest subject bids:** When the highest bid is below the vendor's reserve this work may be announced by the auctioneer as sold 'subject to vendor's authority' or some similar phrase. The effect of this announcement is to signify that the highest bidder will be the purchaser at the bid price if the vendor accepts this price. If this highest bid is accepted then the purchaser has entered a contract to purchase the item at the bid price plus any relevant buyers premium.

## IMPORTANT ADVICE FOR BUYERS

The following information does not form part of the conditions of sale, however buyers, particularly first time bidders are recommended to read these notes.

**A. Bidding at auction:** Please ensure your instructions to the auctioneer are clear and easily understood. It is well to understand that during a busy sale with multiple bidders the auctioneer may not be able to see all bids at all times. It is recommended that you raise your bidding number clearly and without hesitation. If your bid is made in error or you have misunderstood the bidding level please advise the auctioneer immediately of your error – prior to the hammer falling. Please note that if you have made a bid and the hammer has fallen and you are the highest bidder you have entered a binding contract to purchase an item at the bid price. New bidders in particular are advised to make themselves known to the sale auctioneer who will assist you with any questions about the conduct of the auction.

**B. Absentee bidding:** Art+Object welcomes absentee bids once the necessary authority has been completed and lodged with Art+Object. A+O will do all it can to ensure bids are lodged on your behalf but accepts no liability for failure to carry out these bids. See the Absentee bidding form in this catalogue for information on lodging absentee bids. These are accepted up to 2 hours prior to the published auction commencement.

**C. Telephone bids:** The same conditions apply to telephone bids. It is highly preferable to bid over a landline as the vagaries of cellphone connections may result in disappointment. You will be telephoned prior to your indicated lot arising in the catalogue order. If the phone is engaged or connection impossible the sale will proceed without your bidding. At times during an auction the bidding can be frenetic so you need to be sure you give clear instructions to the person executing your bids. The auctioneer will endeavour to cater to the requirements of phone bidders but cannot wait for a phone bid so your prompt participation is requested.

**D. New Zealand dollars:** All estimates in this catalogue are in New Zealand dollars. The amount to be paid by successful bidders on the payment date is the New Zealand dollar amount stated on the purchaser invoice. Exchange rate variations are at the risk of the purchaser.

## ABSENTEE & PHONE BID FORM

Auction No. 154  
Important Paintings and Contemporary Art  
24 September 2020 at 6.00pm

This completed and signed form authorises Art+Object to bid on my behalf at the above mentioned auction for the following lots up to prices indicated below. These bids are to be executed at the lowest price levels possible.

I understand that if successful I will purchase the lot or lots at or below the prices listed on this form and the listed buyers premium for this sale (17.5%) and GST on the buyers premium. I warrant also that I have read and understood and agree to comply with the conditions of sale as printed in the catalogue.

Lot no.	Lot Description	Bid maximum in New Zealand dollars (for absentee bids only)
.....	.....	.....
.....	.....	.....
.....	.....	.....
.....	.....	.....
.....	.....	.....
.....	.....	.....
.....	.....	.....

Payment and Delivery: Art+Object will advise me as soon as is practical that I am the successful bidder of the lot or lots described above.

I agree to pay immediately on receipt of this advice. Payment will be by Eftpos, cash (under \$5000.00) or direct credit. I understand that there is a 2.5% surcharge for payment by Visa or MasterCard credit cards. I understand that payments over \$10,000.00 must be made by direct credit to Art+Object's bank account as shown on the invoice.

I will arrange for collection or dispatch of my purchases. If Art+Object is instructed by me to arrange for packing and dispatch of goods I agree to pay any costs incurred by Art+Object. Note: Art+Object requests that these shipping arrangements are made prior to the auction date to ensure prompt delivery processing.

Please indicate as appropriate by ticking the box:

☐ PHONE BID

☐ ABSENTEE BID

FIRST NAME: .....

SURNAME: .....

ADDRESS: .....

HOME PHONE: .....

MOBILE: .....

BUS. PHONE: .....

EMAIL: .....

Signed as agreed:

.....

To register for Absentee or Phone Bidding this form must be lodged with Art+Object by 2pm on the day of the published sale time in one of three ways:

1. Email a printed, signed and scanned form to Art+Object: [info@artandobject.co.nz](mailto:info@artandobject.co.nz)
2. Fax a completed form to Art+Object: +64 9 354 4645
3. Post a form to Art+Object, PO Box 68345 Wellesley Street, Auckland 1141, New Zealand



## ARTIST INDEX

- Albrecht, Gretchen 248  
 Arbuckle, Matt 298  
 Atkins, Peter 378  
  
 Bambury, Stephen 247  
 Barnes-Graham, Amanda 321  
 Barnhart, Devendra 227  
 Bidwill, Bridget 364  
 Blair, Philippa 215, 363, 374  
 Brown, Helen 232  
 Brown, Nigel 341  
 Bukovnik, Gary 354  
  
 Campbell, Leslie 372  
 Castle, John 368  
 Chong, Liyen 267  
 Collins, Elliot 230  
 Coney, Paul 353  
 Corkery, Stella 299  
 Cotton, Shane 246  
  
 Davey, Ruth 331  
 Demant, Rozi 323,  
 Dolezel, Jenny 344  
 Dong, Song 287  
 Dutch, Ted 357, 358  
 van Duynhoven, Nina 293  
  
 Edwards, Lianne 317  
 Ellis, Robert 204, 223  
 et al. 300  
  
 Feu'u, Fatu 316  
 Findlay, Natalie 370  
 Fletcher, Graham 260  
 Fong, Luise 318  
 France, Patricia 261  
 Francis, Maree 333  
 Frizzell, Dick 214, 228, 242, 355, 376  
  
 George, Darryn 234, 259  
 Gibb, Tony 371  
 Gimblett, Max 268, 324, 340  
 Good, Roy 238  
 Graham, Charlotte 314  
 Gruenwald, Amanda 264  
  
 Hanly, Pat 241, 361  
 Hinton, Bineta 320  
 Hipkins, Gavin 280, 281  
 Hogg, Melitta 348  
 Hotere, Ralph 229, 245, 274, 309, 310  
 Hughes, Sara 359  
  
 Illingworth, Michael 201  
  
 Kahukiwa, Robyn 319  
 Kennedy, David 343  
 Kidd, Hannah 289  
 Killeen, Richard 301, 302, 339, 360  
 Kosuth, Joseph 288  
  
 Lee, Jae Hoon 283  
  
 Madden, JM 366  
 Madden, Peter 258  
 Maddox, Allen 337  
 Matchitt, Para 226  
 Maughan, Karl 216, 249, 250  
  
 McCahon, Colin 206, 213, 269  
 McIntyre, Simon 332, 362  
 McLeod, Robert 330  
 Millar, Judy 257, 266  
 Mills, Rohan Hartley 347  
 Mitchell, Dane 282  
 Moffatt, Tracey 284  
 Mrkusich, Milan 202  
  
 Napangardi, Lily Kelly 303  
 Nerli, Girolamo 263  
  
 O'Hagan, Peter 351, 352  
 Oliver, G 365  
  
 Parker, John Shotton 244  
 Payton, Simon 279  
 Peryer, Peter 285  
 Petre, Mike 233  
 Philips, Margot 262  
 Picasso, Pablo 278  
 Pick Séraphine 296, 297  
 Pule, John 222, 377  
  
 Raine, Toby 239, 240  
 Reynolds, John 272, 273, 301, 302, 306, 313, 334,  
 335, 336  
 Riethmaier, Anne 325, 326  
 Ritchie, Ross 203  
 Robinson, Ann 294, 295  
 Robinson, Peter 243  
 Ross, James 346  
 Rudneyva-McKay, Layla 342  
  
 Schoon, Theo 304  
 Smither, Michael 205, 207, 208, 209, 210, 211, 212,  
 224, 311  
 Straka, Heather 237, 312  
 Stringer, Terry 277  
 Summers, Lew 276  
 Sydney, Grahame 286, 349, 349a, 350, 354A  
  
 Taylor, Alan 369  
 Tomkins, Riduan 327  
 Twiss, Greer 291, 292  
  
 Vasarely, Victor 225  
 Vitasovich, Danijela 322  
  
 Walters, Gordon 235, 236  
 Warhol, Andy 217, 218, 219, 220, 221  
 Warr, Malcolm 375  
 Wealleans, Rohan 265, 270, 271  
 White, A. Lois 253, 254, 255, 256  
 White, Robin 251, 252  
 Wilkinson, Brendan 290  
 Wilkinson, Frith 328, 329  
 Williams, Mervyn 356  
 Williams, Simon 367  
 Wilson, Tim 231  
 Wolfram, Glen 305  
 Wolfe, Emily 307, 308  
 Wood, Agnes 338  
 Woollaston, Toss 275, 345, 373  
 Wooller, Mark 315



**24.09.20**

**ART+OBJECT**