

VOL. 2

The
Collection of
Adrian Burr and
Peter Tatham

ART+OBJECT

VOL. 2

The
Collection of
Adrian Burr and
Peter Tatham

2021



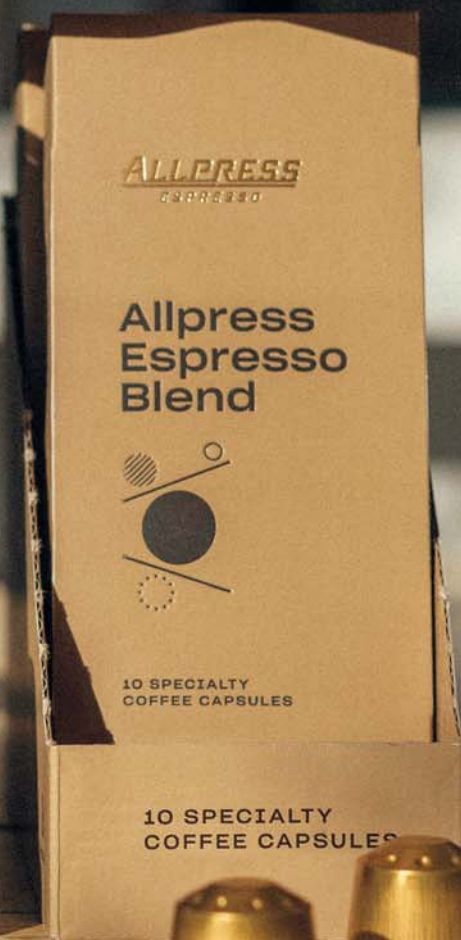
Amazing discoveries



St Cuthbert's



stcuthberts.school.nz



Iconic flavour,
now in capsules

allpressespresso.com

ALLPRESS
ESPRESSO



SCOTTIES
scottiesboutique.co.nz

Signed,

Ther Choon



Whānau
Mārama
New Zealand
International
Film Festival

AUCKLAND: 28 October to 14 November

WELLINGTON: 4 to 21 November

CHRISTCHURCH: 29 October to 14 November

DUNEDIN: 5 to 21 November

HAMILTON: 11 November to 5 December

TAURANGA: 18 November to 5 December

HAWKE'S BAY: 18 November to 5 December

NEW PLYMOUTH: 18 November to 5 December

PALMERSTON NORTH: 19 November to 5 December

MASTERTON: 19 November to 1 December

NELSON: 11 November to 2 December

TIMARU: 11 to 21 November

GORE: 11 to 21 November

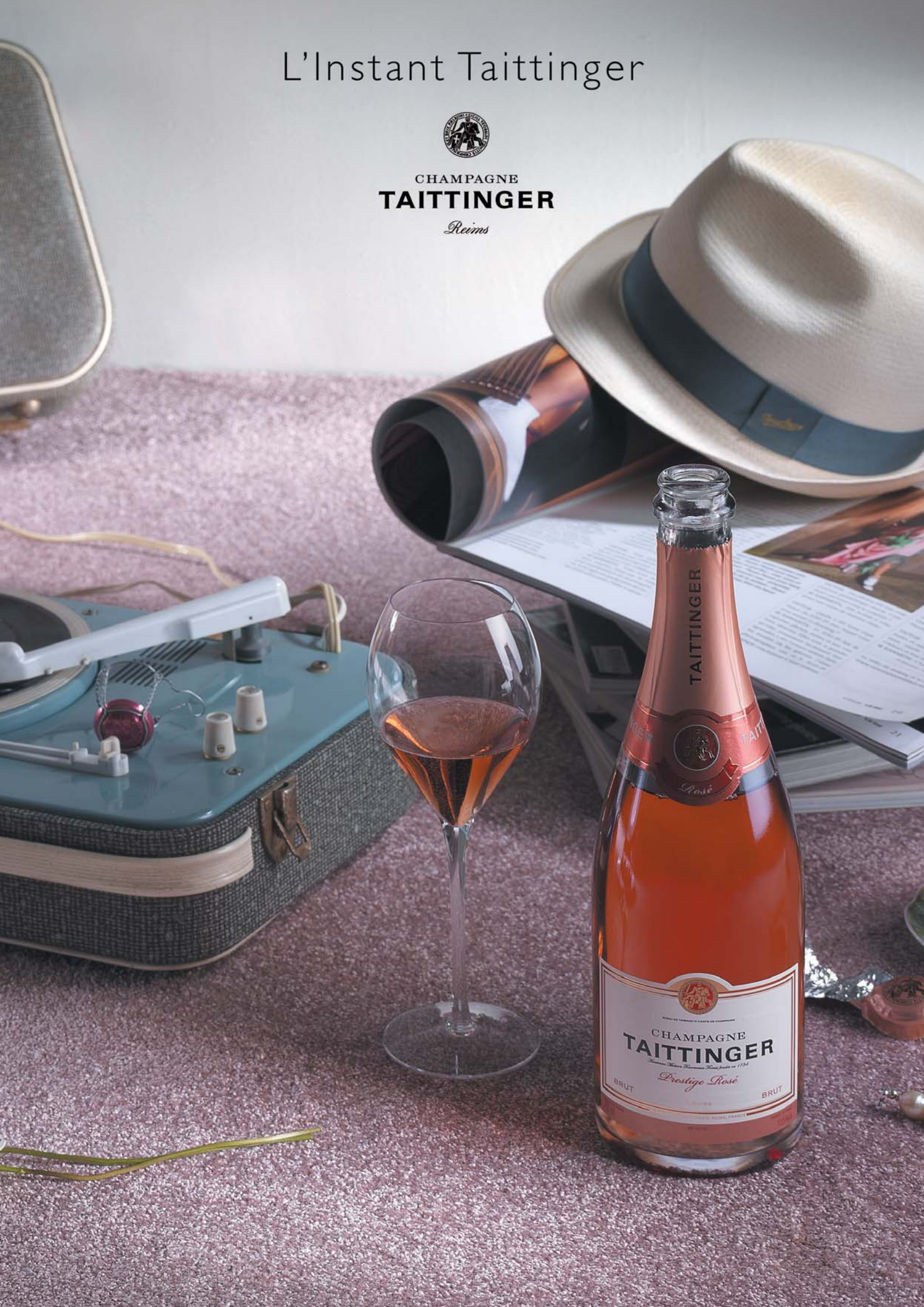
BWX Productions 2021

generously supported by **Art+Object**

L'Instant Taittinger



CHAMPAGNE
TAITTINGER
Reims



EXHIBITING QUALITY LANDSCAPES

NEW ZEALAND'S FINEST LUXURY PROPERTIES

SLOPE HILL ROAD QUEENSTOWN



www.luxuryrealestate.co.nz/Q24

5 4 2

TAKATU ROAD MATAKANA COAST



www.luxuryrealestate.co.nz/NT176

5 5 2

QUEENSTOWN

Terry Spice
+64 21 755 889
terry@luxuryrealestate.co.nz

NORTHLAND

Charlie Brendon-Cook
+64 212 444 888
charlie@luxuryrealestate.co.nz

luxuryrealestate.co.nz

LUXURY REAL ESTATE
NEW ZEALAND

Luxury Real Estate Limited (Licensed REA 2008)

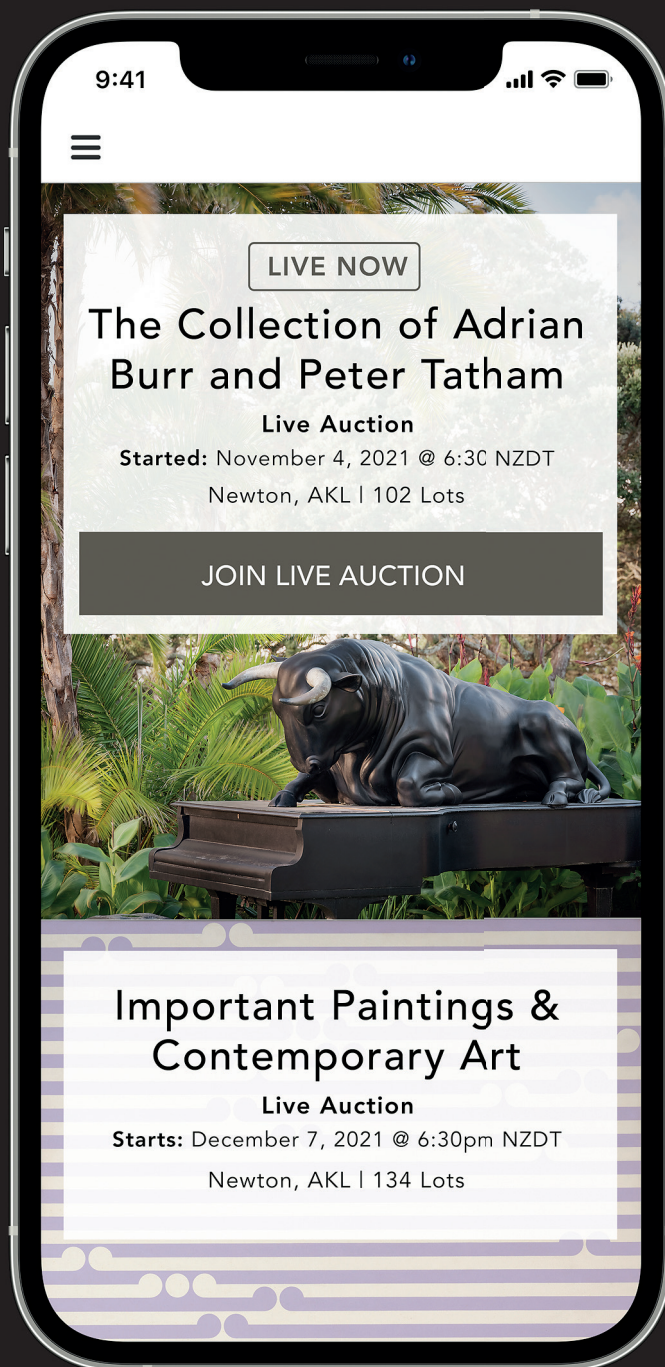


www.seresin.co.nz

PT CHEV COOKIES



Available at Farro stores
ptchevcookies.nz



The Art+Object mobile app is now live and available for download via the App store. Available for IOS and Android, the Art+Object app grants on-the-go access to our auctions allowing collectors to stream the auction and bid remotely in real time. You can now find, research, and enter the saleroom without using a third party platform. Please note users pay no additional fees for bidding via the app, meaning parity for all bidders at Art+Object.





VOL. 2

The
Collection of
Adrian Burr and
Peter Tatham

2021

AUCTION

The Collection of Adrian Burr
and Peter Tatham

Saturday 6 November at 2.30PM
3 Abbey Street, Newton, Auckland

PREVIEW

Tuesday 26 October
5.30PM – 7.30PM

VIEWING

12 Gundry Street, Newton, Auckland

Friday 29 October	9.00AM – 5.00PM
Saturday 30 October	11.00AM – 4.00PM
Sunday 31 October	11.00AM – 4.00PM
Monday 1 November	9.00AM – 5.00PM
Tuesday 2 November	9.00AM – 5.00PM
Wednesday 3 November	9.00AM – 5.00PM
Thursday 4 November	9.00AM – 2.00PM
Friday 5 November	9.00AM – 5.00PM



111. Two decorative terracotta amphorae with painted decoration
Formations, USA
300 x 270 x 240mm
\$200 – \$400

112. Two French confit pots,
glazed ceramic
H.260mm and H. 250mm
\$600 – \$1200

113. Three French confit pots,
glazed ceramic
H. 330, 260 and 245mm
\$900 – \$1500

114. Five French confit pots,
white glazed ceramic
sizes vary (not illustrated)
\$1500 – \$2500

115. A pair of decorative
earthenware orbs on stands
H. 320 x 180mm
\$250 – \$500

116. A carved classical wooden
head of a lady. On stand with a
Perspex case
305 x 180 x 100mm
\$500 – \$800



117. A decorative carved stone Roman head in high relief on a granite plinth, A/F
H. 345 x 190 x 125mm
\$300 – \$500

118. Two terracotta heads in the Roman style
H. 275mm and H. 230mm
\$300 – \$600

119. A decorative resin torso bust on stand, A/F
760 x 450 x 230mm
\$300 – \$500

120. Virgin Mary with Child, from Goa
carved and painted wood
H. 430mm
\$200 – \$400

121. A very decorative articulated wooden mannequin
H. 500mm
\$400 – \$800

122. Two carved and painted wooden heads, one on a stand with gilded beads
H. 250mm and H. 180mm
\$200 – \$400



123. Two fossilised white tortoise shells on stands
largest, H. 410mm
\$300 – \$600

124. A large Oriental hand knotted rug of red tones, with geometric and floral designs
3000 x 1550mm
\$500 – \$800

125. An antique Flemish wall hanging depicting a lake and forest scene
2330 x 1410mm
\$800 – \$1200



126. 18th Century English bow
fronted corner cupboard with
Chinoiserie decoration
930 x 580 x 390mm
\$1500 – \$2500



127. A set of four Georgian
period mahogany dining chairs
with stretchered bases (with
stuffing, no upholstery)
H. 915mm
\$800 – \$1500



128. A late 19th Century
armchair with wooden frame
and tapestry upholstery on
cabriole legs
1000 x 850 x 790mm
\$2000 – \$3000



129. A pair of French carved armchairs with striped linen upholstery, reeded legs, shaped fronts and crested tops
H. 970mm
\$1500 – \$2500

130. A pair of French carved armchairs with striped chenille upholstery, reeded legs, shaped fronts and crested tops
H. 970mm
\$1500 – \$2500

131. A pair of walnut Queen Anne style chairs with shaped solid centre splat
H. 1010mm
\$800 – \$1200

132. Indian Regency period cast iron Greek revival four-seat bench raised on paw feet below tapered stem with vase arm support, the frame inset with carved and caned timber sections. Circa 1820
2140 x 1000 x 530mm

Provenance

The Gaekwad Maharajas of Baroda. Purchased in 2007 from Martin Cook Antiques.

\$2500 – \$4500

133. A pair of contemporary cast bronze firedogs sculpted in the Post-War manner, with forged iron returns, warm bronze finish.
Maker Cox London
H. 670 x D. 400mm
\$1000 – \$2000

134. Two pairs of metal fire dogs, with rounded decoration
400 x 300 x 150mm: each
\$200 – \$400



135. A pair of wrought iron standing lamps, part of the Tremble range by Cox London. *Their inspiration comes from where the two tribes of science and art meet. A depiction, with intended humour, of the molecules that bind us together.*
H. 1540 x 250mm (excluding shades)
\$2000 – \$4000

136. Table Lamp by Porta Romana with square base and oval decoration, bronze finish
H. 1175 x 460 x 290mm (incl. shade)
\$400 – \$700

137. A pair of Ice Cube table lamps by Porta Romana (no shades, wiring needs updating)
540 x 145 x 145mm
\$500 – \$800

138. Carved wooden table lamp with swag decoration and linen shade
H. 620mm
\$400 – \$600

139. A pair of table lamps with terracotta bases, shades included
H. 935mm: each
\$500 – \$1000

140. A pair of antique marbled column table lamps with paper shades
H. 860mm: each
\$500 – \$1000



141. Sinatra Floor Lamp, mid-century Stilnovo design in brass and aluminium, with adjustable arms
purchased from ECC, Auckland
fully extended, 1800 x 1100 x 100mm (fully extended)
\$1000 – \$2000

142. Cast bronze floor lamp on attractive tripod base (no shade)
1790 x 220 x 220mm
\$300 – \$600

143. A pair of floor lamps by Porta Romana with light verdigris patina (need rewiring)
1510 x 290 x 290mm: each
\$400 – \$800

144. A decorative pedestal lamp with telescopic base and adjustable shade, bronze finish
1440 x 345 x 120mm
\$300 – \$600

145. A pair of large spun glass table lamps, no shades
570 x 240 x 240mm: each
\$400 – \$800

146. A small brass desk lamp needs rewiring
150 x 115 x 60mm
\$100 – \$200

147. Philippe Starck *Ara* table lamp by Flos
original label to the base, model 16325
H. 545 mm
\$500 – \$1000



NEW ZEALAND ARTEFACTS AND TAONGA

148. New Zealand Folk Art
Carving on a Māori theme
consisting of a column of three
gesturing figures in black, raised
over a square pedestal base and
mounted with a highly decorated
bowl
H. 805mm

Provenance

Formerly in the John Perry
collection

\$2500 – \$4000

149. New Zealand Folk Art
carving on a Māori theme
featuring a central Tekoteko figure
atop a koruru face and a manaia
head to the top section
H. 905mm

Provenance

Formerly in the John Perry
collection

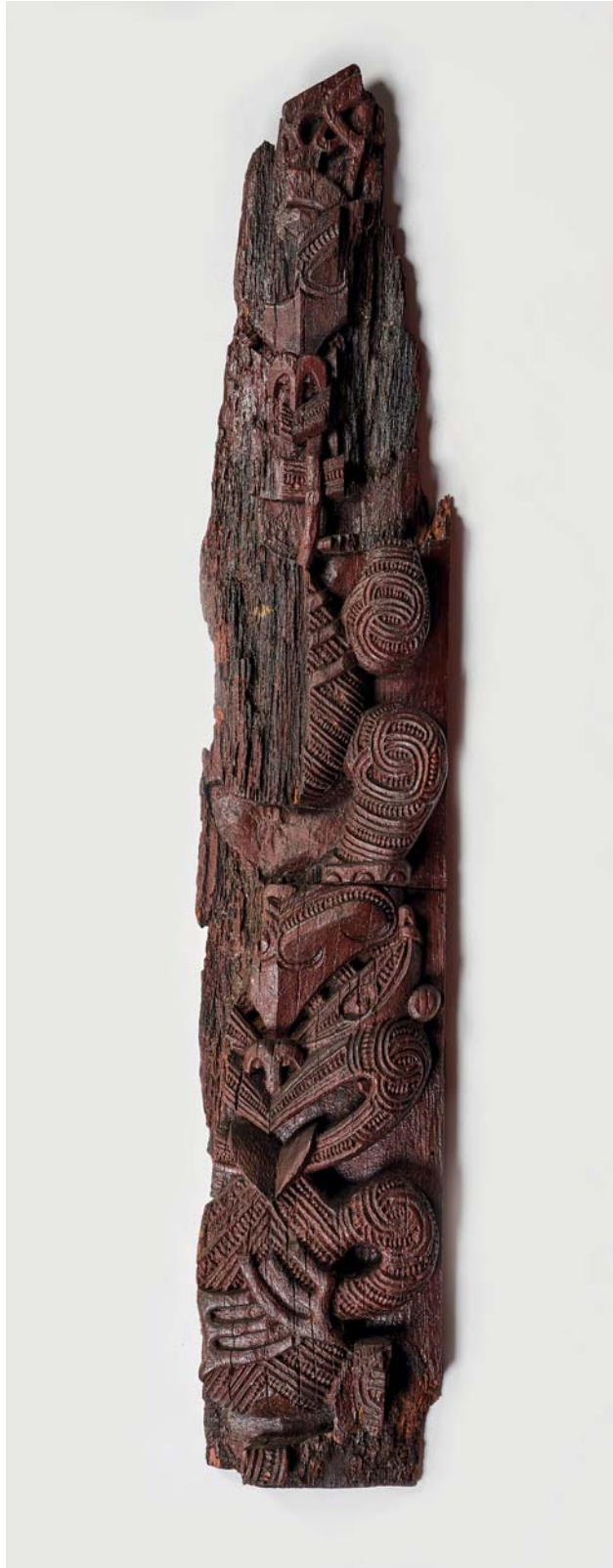
\$500 – \$1000

150. Architectural Elements
Epa and Maihi c.1920–1940
carved Totara
(Y registration pending)
1970 x 950 x 55mm
\$6000 – 8000

151. Architectural Elements
Epa and Maihi c.1920–1940
Carved Totara
(Y registration pending)
1970 x 950 x 55mm
\$6000 – 8000



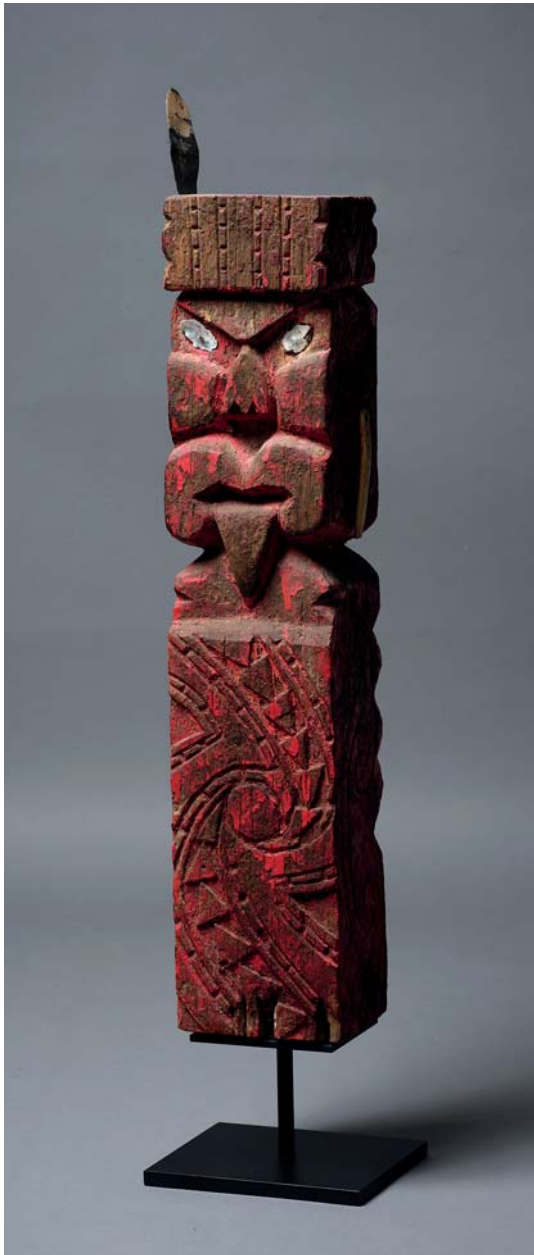
152. Carver Unknown
Amo fragment showing lower tiki
 figure
 Recovered treated swamp kauri
 c.1820–1850
 Y07892
 1850 x 340 x 100mm
 \$18 000 – \$28 000



153. Carver Unknown
 Tekoteko – Standing figure holding
 Patu or Mere
 carved wood, c.1880–1920
 Y registration pending
 770 x 185 x 100mm
 \$15 000 – \$25 000



154. Hori Parone
Tekoteko Figure
enamel on carved timber, paua,
tin, composite, wire (circa. 1960)
860 x 180 x 150mm
\$20 000 - \$30 000



155. An impressive pair of *Amo* boards,
Ngāpuhi tribal region
carved with male and female warrior figures
wearing piupiu. The female figures each
holding a patu and the male figures holding
kotiate and wahaika. Circa 1920.
Y15788, Y15789
H. 2400mm

Provenance

Formerly in the Wagner Museum
collection. Houhora, North of Kaitiaia.

Exhibited

New York International tribal art show,
2004

\$25 000 - \$40 000



156. *Hei Matau*
hook form, carved pounamu
18th Century
Y registration pending
40 x 45mm
\$8000 – 12 000

157. *Kaka Poria*
parrot ring, carved pounamu
late 18th – early 19th Century
Y09317
44 x 35mm
\$4000 – 6000

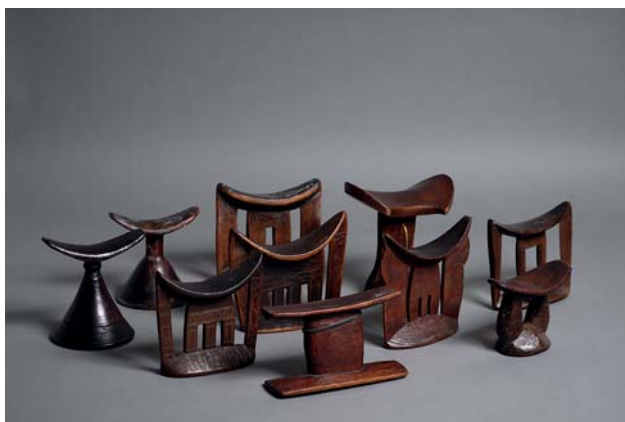
158. A late nineteenth century
Māori Hoe, ceremonial paddle.
Finely and extensively carved
all over to leaf-shaped blade and
handle. The convex side of the
blade with finely carved tiki heads
with inlaid paua eyes and the
reverse with rauponga patterning.
The shaft terminating with carved
wheku head. Blade inscribed
Kahira.
1600 x 135 x 30mm
\$15 000 – \$25 000

159. A large and decorative wood
fired pottery jar with high relief
rope decoration
H. 350 x 460 x 460mm
\$200 – \$400



AFRICAN & PACIFIC ART & APPLIED ARTS

160. A collection of ten African hardwood headrests with carved decoration, sizes vary
\$1800 – \$3000



161. A carved figure from Papua New Guinea, together with a smaller carved wooden figure and a lidded trinket box
tallest, H. 560mm
\$200 – \$400



162. Two very large and decorative Pacific Island spears
H. 3610mm: each
\$400 – \$600



163. A carved tribal sculpture in the form of a chair, with man and child
840 x 300 x 370mm
\$500 – \$800



FURTHER DECORATIVE ARTS ANTIQUES & FURNITURE

164. A large and impressive oval wall mirror decorated with tropical seashells
1250 x 600 x 200mm
\$3000 – \$5000

165. A 1960's modernist gilt wall mirror comprising of three intersecting ovals
1225 x 1210mm
\$1500 – \$2500

166. Two-seater sofa, New Zealand made with cream linen loose covering, wooden frame
2030 x 880 x 1020mm
\$1500 – \$3000



167. A pair of Barrel Chairs in limed wood by Formations, USA with covered seat cushion and kidney pillow
1130 x 730 x 720mm: each
\$2000 – \$3000



168. A pair of Christian Liaigre *Barbuda* armchairs with dark brown leather upholstery, wooden bases
1050 x 695 x 600mm each
\$3000 – \$5000



169. A pair of *Boss* armchairs by Flexform with down filled cushion and backrest and black chromed metal feet, made in Italy
860 x 940 x 560mm each
\$3000 – \$5000



170. An antique Georgian three-seater upholstered sofa with wooden frame, on castors (stretcher base requires restoration)
1720 x 900 x 820mm
\$1500 – \$3000

171. Contemporary circular wooden table on pedestal base
1020 x 750mm
\$600 – \$1200

172. Contemporary side table with metal frame and wooden top and base
650 x 350 x 460mm
\$300 – \$600

173. *Gabrielle* coffee table by Formation, USA with iron base and antiqued mirrored top
1450 x 430 x 460mm
\$2000 – \$3000

174. Armchair with carved wooden frame, together with matching ottoman and blanket box, upholstered in Italian Dedar Fifty Fifty linen, with contrasting piping
Chair: 800 x 840 x 900mm
Blanket box: 1465 x 485 x 525mm
Ottoman: 600 x 800mm

Note

Only the armchair is illustrated.

\$2000 – \$3000



175. Eileen Grey
 Pair of E1027 adjustable side tables
 made by ClassiCon and authorised
 by Aram Design
 chrome tubular steel framing with
 glass circular top
 manufacturer's label attached
 630 x 510 x 510mm: each
 \$800 – \$1200

176. Contemporary storage
 cabinet, two doors with single shelf
 and pull-out drawer with fitted
 compartments
 1030 x 470 x 1015mm
 \$1200 – \$1800



177. Thieren Studio Workshops
 (USA)
 Walnut two door cabinet over
 three drawers with inlaid starburst
 decoration and scroll feet, maker's
 name label attached
 2400 x 1350 x 700mm
 \$8000 – \$12 000



178. Holly Hunt Studio *Sorraia* Bed, two *Spencer* nightstands and cabinet with retractable television enclosed, all in walnut finish. The bed with leather upholstered headboard and fitted Hästens mattress in taupe check. Includes television and remote controls. overall: 2060 x 2370 x 2240mm nightstands: 810 x 525 x 705mm (each) television cabinet: 505 x 1320 x 755mm \$15 000 – \$25 000



179. Steinway & Sons

B-211 Spirio R Grand Piano

in black finish complete with two piano stools

1480 (width) x 2110 (length)mm

354 kilograms weight

Note

Steinway and Sons is the benchmark in the construction of grand pianos of the highest quality. The company is considered to be the founder of modern piano construction and each Steinway grand piano is a unique masterpiece produced from the best materials by the hands of craftsmen. For more than a century and a half, the world's most accomplished pianists have preferred to express their musical genius on Steinway & Sons pianos. The list includes the giants in classical, jazz, and popular music; the men and women who have shaped the world's musical heritage. Today, more than 98 percent of the world's active concert pianists choose to perform on Steinway pianos. The magnificent B-211 R Grand Piano grand piano is often referred to as "the perfect piano". The Spirio model features the world's finest *high resolution player piano* capable of live performance capture and playback. A revolutionary blend of artistry, craftsmanship, and technology, it provides a new means of expression and new ways to access, share and experience performance. It brings automation to the Steinway piano and the greatest pianists of the 20th century to one's own front room, all via an ipad and Spirio app.

Piano is available for viewing by appointment only.

\$170 000 – \$260 000



180. Winglefield Extending Dining Table by Oka, UK. Crafted from white pine, with a hand-painted, rubbed black top and legs, seats six when folded, ten when extended

W. 4750 x L. 900 x H. 750mm: extended
\$3000 – \$4000

181. Winglefield Dining Table by Oka, UK. Crafted from white pine, with a hand-painted rubbed black top and legs, seats six
2365 x 900 x 775mm (not illustrated)
\$2500 – \$3500

182. *Macau* coffee table by Dennis and Leen, USA
ebonised finish with shaped legs
1620 x 510 x 470mm
\$1000 – \$2000

183. Christian Liaigre for Holly Hunt *Scarabee* Table
black lacquered top with shaped pedestal support and square base
710 x 650 x 650mm
\$800 – \$1500



184. Contemporary ebonised wooden screen in four sections
H. approx. 2000mm
\$500 – \$1000

185. Leather and brass television cabinet with retractable doors
1010 x 600 x 940mm
\$1000 – \$2000



186. Log coffee table by Roderick Vos for Linteloo
steel frame and solid oak top in
natural finish
purchased from ECC, Auckland
1500 x 1500 x 410mm
\$2000 – \$3000



187. A custom made dining table
with solid walnut top in two parts
and trestle bases sourced from
Homage, Newmarket
2100 x 1100mm: each part
\$4000 – \$6000



188. Marcel Wanders Studio
A large 'Farooo' Standard
lamp designed in 2012 and
manufactured by Moooi. Inspired
by Italian lighthouse design and
of imposing dimensions. This
example in plain black.
1840 x 900 x 900mm
\$1500 – \$2500

189. Marcel Wanders Studio
An oversized 'Farooo' Standard
lamp designed in 2012 and
manufactured by Moooi. Inspired
by Italian lighthouse design and
of imposing dimensions. This
example in plain black.
2360 x 1120 x 1120mm
\$2500 – \$4000



190. A reproduction Spanish oval dining table in dark walnut, with two removeable centre leaves on stretched base with turned legs
Dennis and Leen, USA
2440 x 1320 x 740mm,
3350 x 1320 x 750mm (extended)
\$7000 – \$9000

191. A set of four *Paloma* dining armchairs (lowback) by Gregorius | Pineo, with two matching stools, all on castors and with two sets of loose fabric covers by C&C Milano fabrics, the chairs upholstered in silk and linen dedar fabric
chairs: 950 x 660 x 640mm (each)
\$2500 – \$5000

192. A set of four *Paloma* dining armchairs (lowback) by Gregorius | Pineo, with two matching stools, all on castors and with two sets of loose fabric covers by C&C Milano fabrics, the chairs upholstered in silk and linen dedar fabric chairs (each): 950 x 660 x 640mm
\$2500 – \$5000

193. *Santorini* dining table by Gregorius | Pineo, USA
plank top with oak finish, hand forged iron base with hammered texture
1520 x 1520 x 750mm
\$5000 – \$8000





194. Dutch leather chest with four drawers and nailhead detailing
Formations, USA
1000 x 780 x 585mm
\$3000 – \$5000

195. A Bergere style armchair, wooden frame with reeded legs, upholstered in blue dedar linen, with cushion
950 x 700 x 750mm
\$1200 – \$2000

196. A very decorative heavily carved walnut four-draw serving table with stretchered base on six legs
Formations, USA
2740 x 690 x 875mm
\$6000 – \$9000

197. An early 18th Century Irish walnut console table with carved and gilded base, four quartered veneer top
1350 x 750 x 780mm
\$10 000 – \$16 000

198. An early Georgian period gilded stool with lion paw feet and carved cabriolet legs
725 x 480 x 520mm
\$3000 – \$5000



199. A Bergère style chair, with beech frame and reeded front legs, upholstered seat and back
950 x 690 x 620mm
\$1200 – \$2000

200. A pair of very elegant Bergere style chairs, with carved and gilded frames, upholstered seats and backs
1015 x 840 x 840mm
\$2000 – \$4000

201. South-East Asian hardwood two-door cupboard on low base with turned legs, profusely decorated with brass studs, corners and cresting. The interior remodelled for modern electronics.
1050 x 1540 x 540mm
\$2500 – \$4000

202. A Georgian period mahogany circular revolving drum table on pedestal base
D. 920mm
\$1200 – \$1800

203. A 19th Century French fruitwood wine tasting table
D. 925mm
\$1250 – \$1800

204. A 19th Century French fruitwood circular wine tasting table
D. 1100mm
\$1500 – \$2500



205. A small 18th Century English oak bureau bookcase with two-door fitted cupboard and stepped interior to bureau with well, brass plate handles, on bracket feet
1930 x 550 x 650mm
\$3000 – \$4000



206. An English 18th Century walnut chest on chest with canted corners, brushing slide, the bottom section with doors simulating draws enclosing two shelves, with pierced-back brass handles, on bracket feet
2050 x 1075 x 610mm
\$4000 – \$5000

207. An 18th Century English elm dresser rack with open shelves
\$200 – \$300

208. A French oak chest with six drawers, panelled ends, cast brass handles
1270 x 540 x 860mm
\$2500 – \$4000



209. A 1990 Convertible Bentley Continental Corniche

Built in Japan in right hand drive and sold by Cornes and Company, United Kingdom. Shipped to Yokohama. First registered in 1993. Very limited mileage of just over 59 000 kilometres. Purchased in 2013. Regularly serviced by Giltrap Prestige, Auckland and Colgray Motors, Albany. Around 452 Corniche Continentals were built between 1989 and 1993. This example in the classic 'Bentley Brooklands Green' paintwork. Together with tan hide upholstery and dark brown soft hood. Offered together with original tool kit and original handbooks.

Chassis No. SCBZD02A8MCH30587

Engine No. 74414L4101/NKL

Current registration and warrant of fitness

\$120 000 – \$160 000



210. An Hermès 'Kawa Ora' surfboard
designed by Te Rangitu Netana
fiberglass and resin with dual fins at underside
1465 x 520 x 155mm
\$13 000 – \$18 000



FURTHER NEW ZEALAND ART

211. Sarah Guppy
(New Zealand, 1957–)
Gaddums Hill, Gisborne
gouache on paper
signed and dated '94
403 x 578mm
\$1000 – \$2000

212. Sarah Guppy
(New Zealand, 1957–)
Whale of a Time
gouache on paper
title inscribed, signed with artist's
initials SG and dated 15.5.91
420 x 520mm
\$800 – \$1200

213. Vicky Savage
(New Zealand)
Holding the Balance
cast bronze, AP
signed with artist initials VS
330 x 90 x 130mm
\$1400 – \$2200

214. Vicky Savage
(New Zealand)
The Journey
cast bronze, AP
signed with artist initials
155 x 55 x 45mm
\$800 – \$1400

215. Fran Dibble
(United States/New Zealand,
b. 1962)
Planes
cast bronze, 2012
signed 'Dibble Studio'
1180 x 1480 x 460mm
\$15 000 – \$25 000

216. Séraphine Pick
(New Zealand, 1964–)
Untitled
intaglio etching, 11/20
signed and dated '09
380 x 565mm
\$1000 – \$2000



217. Len Lye
(New Zealand, 1901–1980)
Self-Portrait (With Night Tree)
black and white photograph
published by the Len Lye
Foundation in 2008 from the 1947
original, 73/250
original Govett-Brewster, Len
Lye Foundation certificate of
authenticity affixed verso
254 x 203mm
\$300 – \$600

218. Robert Ellis
(New Zealand, 1929–)
Aroha
lithograph, 9/50
title inscribed, signed and dated
1991
730 x 520mm
\$600 – \$900

219. Dick Frizzell
(New Zealand, 1943–)
Four Four Time
screenprint, A/P
title inscribed, signed and dated
'07
760 x 560mm
\$1800 – \$2800

220. Susanne Kerr
(New Zealand)
Untitled
gouache on Hahnemuhle paper
signed and dated 2012
1250 x 1080mm
\$5000 – \$8000

221. Susanne Kerr
(New Zealand)
Vessel No. I
gouache on Hahnemuhle paper
signed and dated 2013
200 x 300mm

Exhibited

‘The Unfolding’, FHE
Galleries, Auckland, 2013.

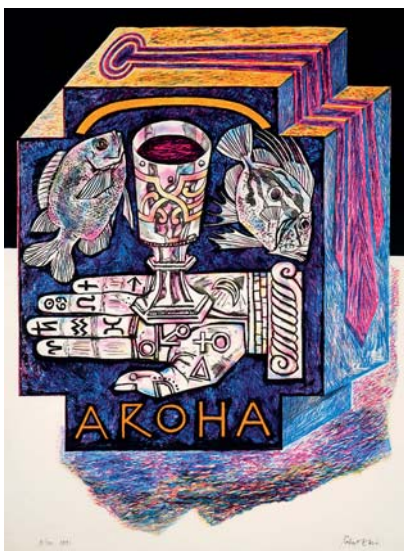
\$1500 – \$2500

222. Susanne Kerr
(New Zealand)
Feast No. I
gouache on Hahnemuhle paper
signed and dated 2013
200 x 300mm

Exhibited

‘The Unfolding’, FHE
Galleries, Auckland, 2013.

\$1500 – \$2500



223. Joe Sheehan
(New Zealand, 1976–)

Survival Kit

Russian nephrite jade, pounamu
from Big Bay, South Australian
black nephrite jade in wooden case,
edition of 10 (2006)
80 x 205 x 210mm
\$5000 – \$8000

224. Joe Sheehan
(New Zealand, 1976–)

Non-Rechargeable

carved New Zealand nephrite jade
(Pounamu) mounted to card
title inscribed, signed and dated
'06 verso
13 x 50mm each (3 pieces)

Exhibited

'Clean Green', G2 FHE
Galleries, Auckland, 3–28
October 2006.

\$2000 – \$3000

225. Hope Gibbons
(New Zealand, 1966–)

Treasure 2

mixed media on board
title inscribed, signed and dated
2013 verso
600 x 600mm
\$1000 – \$2000

226. Hope Gibbons
(New Zealand, 1966–)

Treasure 5

mixed media on board
title inscribed, signed and dated
2013 verso
600 x 600mm
\$1000 – \$2000



227. Gui Taccetti (Brazil/New Zealand, 1983–)
Viado (Deer) from *Inferno* (2019)
 digital print, 1/9
 2000 x 1500mm
 \$6000 – \$9000

Note

Further images from this series and the artist's 'Seraphim' (2017) series are available. Please enquire for further details.

228. Sarah Guppy (New Zealand, 1957–)
Green Man Praying
 oil on paper
 title inscribed and dated mid 1991
 570 x 760mm
 \$800 – \$1200

229. Jan Nigro (New Zealand, 1919–2012)
Head
 gouache on paper
 title inscribed, signed and dated '54
 392 x 485mm
 \$500 – \$800



FURTHER APPLIED ARTS

230. Fiona Pardington

(New Zealand 1961–)

The Popular Recreator

set of 12 ceramic plates with high-fired decoration

each signed verso

Purchased Starkwhite Gallery,

March 2016

\$1200 – \$2000

232. Graeme Storm

Large stoneware vase

with carved decoration and blue and brown glaze

impressed mark to the foot

H. 380mm

Provenance

Formerly in the John Perry

Collection

\$700 – \$1200

233. Paola Paronetto

Four paper clay ceramics

each unique, with hand-applied gold leaf

each signed to the base, purchased in Venice, Italy

sizes variable

250 x 305 x 306mm

\$1000 – \$1500

231. Artist Unknown

Untitled – Stylised Bird Form

carved granite

395 x 125 x 65mm

\$500 – \$800

234. A large and impressive ceramic bowl by Roy Hamilton

with gilt, silver and impressed decoration, together with a

collection of multi-coloured ceramic eggs and balls by Warren Randall

the bowl, D. 620mm

\$600 – \$800



235. Artist Unknown

Untitled

hanging post with carved Pacific
decoration, copper finish

970 x 105 x 105mm

\$600 – \$800

238. Ottmar Horl

Worldview Model IV

plastic material, made in Germany
engraved HÖRL

420 x 180 x 130mm

\$300 – \$500

240. A pair of sweet dishes,

glazed porcelain

stamped *Christian Lacroix* to the
base

195 x 160 x 35mm each

\$150 – \$300

236. Warren Randall

Two ceramic bowls with sgraffito
and gilded decoration

each signed to base, the smaller
dated '91

D. 290mm and D. 245mm

\$200 – \$400

239. Driade Company

A very decorative blown glass and
metal vase in the Murano style, A/F

360 x 500 x 100mm

\$100 – \$200

241. A decorative tree form and

two matching candelabras

made of iron and wood

largest, H. 550mm

\$150 – \$300

237. Warren Randall

Two ceramic bowls with impressed
abstract decoration. Only one
illustrated

each signed to base and dated '91
D. 245mm

\$200 – \$400

242. Artist unknown

Portrait of a man

unglazed clay bust

260 x 190 x 180mm

\$200 – \$300



FURTHER ANTIQUES & DECORATIVE ITEMS

243. A Regency Period circular carved giltwood mirror with sunburst surround
830 x 830 x 90mm
\$1000 – \$2000

244. A fine Regency Period giltwood mirror, the circular frame with beading and ebonised slip, surmounted with an eagle on a square tablet between carved foliage and downward finial
940 x 530 x 160mm
\$1500 – \$2500

245. A spectacular antique Italian hand carved giltwood mirror
2200 x 1475mm
\$10 000 – \$15 000



246. A pair of carved giltwood five branch wall sconces
620 x 560 x 110mm: each
\$800 – \$1500

247. A pair of ornaments depicting urns with eagle decoration, atop plinths with gilded swag decoration
285 x 180 x 90mm: each
\$800 – \$1500

249. A collection of six tribal betel nut habit lime containers, hand-etched bone and wood, some with silver mounts, from Indonesia largest H. 225mm
\$400 – \$700

248. Two bronze ornaments with gilt decoration, one with a lion on a plinth, the other with an urn H. 245mm and H. 325mm
\$500 – \$800

250. A pair of decorative carved giltwood ornaments
435 x 225 x 70mm: each
\$200 – \$400

251. A pair of cast iron urns on plinths
530 x 300 x 300mm: each
\$500 – \$900



252. Two matching carved wood table lamps in the roman style (no shades)

H. 750mm

\$200 – \$400

253. Brass and marble table lamp (no shade, needs rewiring)

H. 580mm

\$150 – \$300

254. A claret jug with metal mounts, engraved with a cricketing scene

H. 330mm

together with a trinket box with silver top, marked 800, not illustrated

90 x 90 x 75mm

\$200 – \$300

255. Two wooden croquet mallets

H. 970mm

\$150 – \$300

256. Three assorted wooden walking sticks, one with marquetry

\$300 – \$500

257. Bodo Sperlein for

Tane Silver Atlas Plate

silver and wood

maker's silver label to the base

D. 280mm

\$200 – \$300

258. A set of three English

lacquered and gilded papier-

mache trays inscribed 1857 verso

760 x 560mm, 620 x 470, 415 x

320mm

\$600 – \$1000



259. An English Majolica ware tureen with removeable interior
290 x 220 x 190mm
\$300 – \$500

260. A 19th Century English lidded two-handled chocolate cup with painted and gilded decoration
220 x 260 x 150mm
\$200 – \$300

261. An 18th Century Chamberlains Worcester teacup and saucer, decorated with a gilded Imari pattern
\$200 – \$400

262. A 19th Century English Copeland & Garrett footbath glazed ceramic with side handles
480 x 310 x 200mm
\$250 – \$500

263. A large mid-19th Century Copeland & Spode meat ashet marked to the base
570 x 445mm
\$200 – \$400

264. A collection of nine English 19th Century draining plates predominantly blue and white, depicting English garden scenes
sizes variable
\$800 – \$1200



265. Three Japanese Imari plates,
Meiji period
D. 180mm
\$250 – \$500

266. A large Late 18th Century
Chinese Export armorial bowl,
inscribed with initials JG within a
shield, A/F
140 x 330 x 330mm
\$200 – \$300

267. A pair of Chinese Qing
dynasty ancestor portrait silk scroll
paintings
1800 x 1160mm: each
\$800 – \$1200

268. Two Chinese seated figures
the first a carved painted wood
figure of an emperor, the second
a sancai stoneware figure of an
official
the tallest, H. 310mm
\$150 – \$300

269. A decorative Chinese
painted and glazed plaster figure of
a child resting
285 x 100 x 140mm
\$100 – \$200

270. A handsome pair of Middle
Eastern carved painted wood
figures in ceremonial dress
H. 430mm
\$200 – \$400

271. An African glazed resin
figure of a man holding a water
pitcher on a marble stand; together
with a wall hanging Chinese
warrior plaster figure
H. 180mm and H. 260mm
\$150 – \$300



272. A decorative stone Buddha head sculpture
370 x 300 x 300mm
\$200 – \$400

273. Gladstone Pottery Museum for Recollections Ltd

A pair of glazed stoneware parrots in the style of Chinese sancai ceramic, inscribed to the base *"Made for Recollections Ltd by Gladstone Pottery Museum after the original in the Gubbay Collection at Clandon Park, Surrey belonging to the National Trust"*.

230 x 120 x 90mm each

\$200 – \$400

274. Walnut cigar humidor with ebonised exterior and fitted interior, four sliding shelves on brass feet with key
260 x 260 x 200mm
\$500 – \$800

275. A Regency period mahogany tea caddy with fitted interior
\$400 – \$800



276. A Regency period tortoise shell tea caddy with ring side handles and original feet, glass mixing bowl
\$2000 – \$3000



277. 1949 Chris-Craft Racing Runabout Boat Model complete with original packaging, in a Perspex display case the case, 1110 x 350 x 380mm
\$600 – \$1000



278. Sovietski Russian Border Guard binoculars together with original mount and wooden tripod
580 x 390 x 1340
\$1500 – \$2500



279. Cox London

A pair of Coral lamps
wrought iron and bronze

Red Coral was used to wonderful effect in the renaissance. The Coral wrought and cast lamp was inspired by the tradition of elevating beautiful natural forms on turned gilt wood bases.

510 x 330mm

\$2000 – \$3000

280. An attractive iron chandelier
with broad foliage decoration

900 x 700 x 700mm

\$500 – \$1000

281. A pair of large and
impressive metal lantern pendant
lights with arched panels and
bronze finish

one illustrated

1100 x 510 x 510mm

\$1000 – \$2000

282. A smaller pair of metal
lantern pendant lights with glass
panels

one illustrated

770 x 400 x 390mm

\$800 – \$1200

283. Three wall mounted
Copylights by Brainbox, Hamburg
all in original box; together with the
original catalogue *The Copylight*
Book I, Hamburg, 1995

The lamps, 300 x 300 x 85mm

\$150 – \$300



284. A pair of large ceramic garden pots with dark brown glaze
900 x 700 x 700mm
\$1000 – \$2000

285. Six metal planters
various sizes, largest
370 x 200 x 210mm
\$200 – \$300

286. A pair of large concrete garden pots
one illustrated
840 x 510mm
\$500 – \$1000

287. Three large concrete garden pots
one illustrated
840 x 510mm
\$750 – \$1500

288. Two outdoor side tables or stools
one illustrated
365 x 365 x 470mm
\$150 – \$300

289. A pair of decorative ice buckets
marked l'Hotel du Mont, Paris
500 x 390 x 240mm
\$150 – \$300

290. A quantity of upholstery leather
\$200 – \$300



CONDITIONS OF SALE

IMPORTANT ADVICE FOR BUYERS

Please note: it is assumed that all bidders at auction have read and agreed to the conditions described on this page. Art+Object directors are available during the auction viewing to clarify any questions you may have.

1. Registration: Only registered bidders may bid at auction. You are required to complete a bidding card or absentee bidding form prior to the auction giving your correct name, address and telephone contact and supplementary information such as email addresses that you may wish to supply to Art+Object.

2. Bidding: The highest bidder will be the purchaser subject to the auctioneer accepting the winning bid and any vendor's reserve having been reached. The auctioneer has the right to refuse any bid. If this takes place or in the event of a dispute the auctioneer may call for bids at the previous lowest bid and proceed from this point. Bids advance at sums decreed by the auctioneer unless signaled otherwise by the auctioneer. No bids may be retracted. The auctioneer retains the right to bid on behalf of the vendor up to the reserve figure.

3. Reserve: Lots are offered and sold subject to the vendor's reserve price being met.

4. Lots offered and sold as described and viewed: Art+Object makes all attempts to accurately describe and catalogue lots offered for sale. Notwithstanding this neither the vendor nor Art+Object accepts any liability for errors of description or faults and imperfections whether described in writing or verbally. This applies to questions of authenticity and quality of the item. Buyers are deemed to have inspected the item thoroughly and proceed on their own judgment. The act of bidding is agreed by the buyer to be an indication that they are satisfied on all counts regarding condition and authenticity.

5. Buyers premium: The purchaser by bidding acknowledges their acceptance of a buyers premium of 18% + GST to be added to the hammer price in the event of a successful sale at auction.

6. Art+Object is an agent for a vendor: A+O has the right to conduct the sale of an item on behalf of a vendor. This may include withdrawing an item from sale for any reason.

7. Payment: Successful bidders are required to make full payment immediately post sale – being either the day of the sale or the following day. If for any reason payment is delayed then a 20% deposit is required immediately and the balance to 100% required within 3 working days of the sale date. We accept payment via Eftpos, cash (under \$5000.00) and direct credit. Visa and MasterCard credit cards are accepted, however a surcharge of 2.5% will be added. Payments over \$10,000.00 must be made by direct credit to our bank account. Our bank details for deposits are 12-3107-0062934-00. Please use your buyer number as transaction reference. Please refer to point 7 of the Conditions of Sale in the catalogue for a detailed description of payment terms.

8. Failure to make payment: If a purchaser fails to make payment as outlined in point 7 above Art+Object may without any advice to the purchaser exercise its right to: a) rescind or stop the sale, b) re offer the lot for sale to an underbidder or at auction. Art+Object reserves the right to pursue the purchaser for any difference in sale proceeds if this course of action is chosen, c) to pursue legal remedy for breach of contract.

9. Collection of goods: Purchased items are to be removed from Art+Object premises immediately after payment or clearance of cheques. Absentee bidders must make provision for the uplifting of purchased items (see instructions on the facing page).

10. Bidders obligations: The act of bidding means all bidders acknowledge that they are personally responsible for payment if they are the successful bidder. This includes all registered absentee or telephone bidders. Bidders acting as an agent for a third party must obtain written authority from Art+Object and provide written instructions from any represented party and their express commitment to pay all funds relating to a successful bid by their nominated agent.

11. Bids under reserve & highest subject bids: When the highest bid is below the vendor's reserve this work may be announced by the auctioneer as sold 'subject to vendor's authority' or some similar phrase. The effect of this announcement is to signify that the highest bidder will be the purchaser at the bid price if the vendor accepts this price. If this highest bid is accepted then the purchaser has entered a contract to purchase the item at the bid price plus any relevant buyers premium.

The following information does not form part of the conditions of sale, however buyers, particularly first time bidders are recommended to read these notes.

A. Bidding at auction: Please ensure your instructions to the auctioneer are clear and easily understood. It is well to understand that during a busy sale with multiple bidders the auctioneer may not be able to see all bids at all times. It is recommended that you raise your bidding number clearly and without hesitation. If your bid is made in error or you have misunderstood the bidding level please advise the auctioneer immediately of your error – prior to the hammer falling. Please note that if you have made a bid and the hammer has fallen and you are the highest bidder you have entered a binding contract to purchase an item at the bid price. New bidders in particular are advised to make themselves known to the sale auctioneer who will assist you with any questions about the conduct of the auction.

B. Absentee bidding: Art+Object welcomes absentee bids once the necessary authority has been completed and lodged with Art+Object. A+O will do all it can to ensure bids are lodged on your behalf but accepts no liability for failure to carry out these bids. See the Absentee bidding form in this catalogue for information on lodging absentee bids. These are accepted up to 2 hours prior to the published auction commencement.

C. Telephone bids: The same conditions apply to telephone bids. It is highly preferable to bid over a landline as the vagaries of cellphone connections may result in disappointment. You will be telephoned prior to your indicated lot arising in the catalogue order. If the phone is engaged or connection impossible the sale will proceed without your bidding. At times during an auction the bidding can be frenetic so you need to be sure you give clear instructions to the person executing your bids. The auctioneer will endeavour to cater to the requirements of phone bidders but cannot wait for a phone bid so your prompt participation is requested.

D. New Zealand dollars: All estimates in this catalogue are in New Zealand dollars. The amount to be paid by successful bidders on the payment date is the New Zealand dollar amount stated on the purchaser invoice. Exchange rate variations are at the risk of the purchaser.



ABSENTEE & PHONE BID FORM

Auction No. 164

The Collection of Adrian Burr and Peter Tatham

4 November 2021 and 6 November 2021

This completed and signed form authorises Art+Object to bid on my behalf at the above mentioned auction for the following lots up to prices indicated below. These bids are to be executed at the lowest price levels possible.

I understand that if successful I will purchase the lot or lots at or below the prices listed on this form and the listed buyers premium for this sale (18%) and GST on the buyers premium. I warrant also that I have read and understood and agree to comply with the conditions of sale as printed in the catalogue.

Lot no.	Lot Description	Bid maximum in New Zealand dollars (for absentee bids only)
_____	_____	_____
_____	_____	_____
_____	_____	_____
_____	_____	_____
_____	_____	_____
_____	_____	_____
_____	_____	_____

Payment and Delivery: Art+Object will advise me as soon as is practical that I am the successful bidder of the lot or lots described above.

I agree to pay immediately on receipt of this advice. Payment will be by Eftpos, cash (under \$5000.00) or direct credit. I understand that there is a 2.5% surcharge for payment by Visa or MasterCard credit cards. I understand that payments over \$10,000.00 must be made by direct credit to Art+Object's bank account as shown on the invoice.

I will arrange for collection or dispatch of my purchases. If Art+Object is instructed by me to arrange for packing and dispatch of goods I agree to pay any costs incurred by Art+Object. Note: Art+Object requests that these shipping arrangements are made prior to the auction date to ensure prompt delivery processing.

Please indicate as appropriate by ticking the box:

☐ PHONE BID

☐ ABSENTEE BID

MR/MRS/MS:

FIRST NAME: _____ SURNAME: _____

ADDRESS: _____

HOME PHONE: _____ MOBILE: _____

BUSINESS PHONE: _____ EMAIL: _____

Signed as agreed: _____

To register for Absentee or Phone Bidding this form must be lodged with Art+Object by 2pm on the day of the published sale time in one of three ways:

1. Email a printed, signed and scanned form to Art+Object: info@artandobject.co.nz
2. Fax a completed form to Art+Object: +64 9 354 4645
3. Post a form to Art+Object, PO Box 68345 Wellesley Street, Auckland 1141, New Zealand

2021