

The Collection
of John Elliot
Lawford



ART+OBJECT

Captain James Cook

A set of the Accounts of the Voyages

Hawkesworth, John

[First Voyage] An Account of the Voyages Undertaken by the order of His Present Majesty for making discoveries in the Southern Hemisphere, and successively performed by Commander Byron, Captain Wallis, Captain Carteret, and Captain Cook, in the Dolphin, the Swallow and the Endeavour: drawn up from the journals which were kept by the several commanders, and from the papers of Joseph Banks Esq. Vol. I. 6 p.l., xxxvi, 456pp, 20 charts and plates; Vol. II. xiv, 410pp, 22 charts, and plates; Vol. III., 395pp, 9 charts and plates, short, closed tear to map of New Zealand.

London: Printed for W. Strahan and T. Cadell 1773. Three volumes. First edition, this issue includes "A Chart of the Straits of Magellan.

Cook, James.

[Second Voyage] – A Voyage Towards the South Pole, and round the World. Performed in His Majesty's ships the Resolution and Adventure, in the years, 1772, 1773, 1774, and 1775. Written by James Cook, Commander of the Resolution. In which is included Captain Furneaux's narrative of his proceedings in the Adventure during the separation of the ships. Vol. I. xl, 378pp, frontis [portrait], 36 charts and plates. Vol. II. [4] l., 396pp, fldg table. 27 charts and plates. London: Strahan and Cadell 1777 first edition. With Sir John Pringles 'A Discourse upon some late improvements of the means of preserving the health of mariners.' Two volumes,

Cook James & James King

[Third Voyage] – A Voyage to the Pacific Ocean undertaken by the Command of His Majesty for making Discoveries in the Northern Hemisphere. To Determine the Position and the Extent of the West Side of North America; its Distance from Asia; and the Practicability of a North West Passage to North America. Performed under the Direction of Captains Cook, Clerke and Gore in His Majesty's Ships the Resolution and Discovery. In the Years 1776, 1777, 1778, 1779 and 1780.

London: Printed by W and A Strahan 1784 first edition. Three volumes and one folio atlas. Vol. I. lcvii, 421p, 7 plates; Vol. II. [7] p.l., 548p, 11 plates; Vol. III. [7] p.l., 556p, 6 plates. Atlas 63 plates. Total of 87.

Text blocks all measure 300m, uniformly bound in contemporary leather boards, re-backed with spines renewed to style, original endpapers. Scattered toning, foxing and offsetting, edges lightly trimmed. Bindings to text volumes tight. Folio rebound in half leather with marbled boards a few spots and some offsetting. A very clean and attractive set.

Provenance: Estate of John Lawford.

\$20 000 – \$30 000

05DEC23





COOK'S
VOYAGES

VOL.
I.

COOK'S
VOYAGES

VOL.
II.

COOK'S
VOYAGES

VOL.
III.

COOK'S
VOYAGES

VOL.
IV.

COOK'S
VOYAGES

VOL.
V.

COOK'S
VOYAGES

VOL.
VI.

COOK'S
VOYAGES

VOL.
VII.

COOK'S
VOYAGES

VOL.
VIII.

COOK'S
VOYAGES

ATLAS

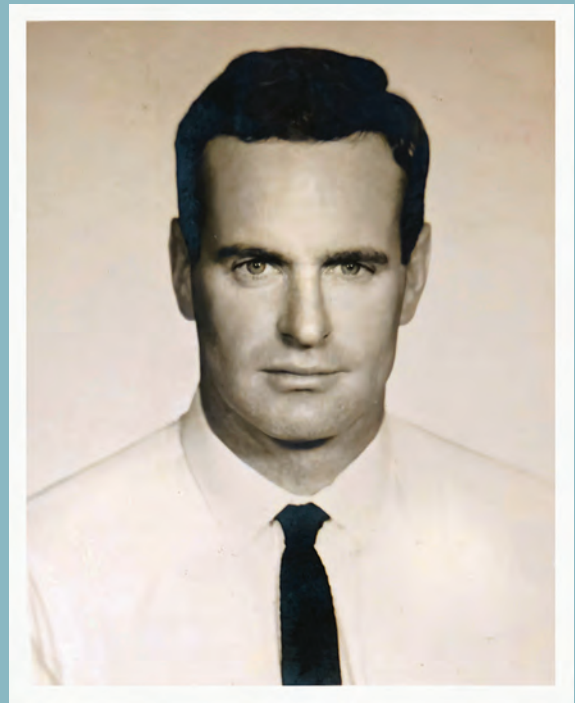
JOHN LAWFORDE was one of those unusual, eccentric and intriguing characters that you are fortunate to meet in the art world. A little bit mischievous, John always arrived at the rooms with a smile, ready for a cup of tea and conversation. He was humble, with a deep interest in the history of New Zealand but open to learning something new. Like many collectors, he struggled to settle on one specific area, with his interest encompassing early New Zealand paintings and prints, items relating to Cooks Voyages, the Bounty Mutiny, the East India Company and China Trade. Topographical art, taonga, rare books, fine silver, china, conchology and antiques all fell within his remit.

Lawford's passion for New Zealand history was all encompassing, and he was particularly interested in the history of Auckland and Northland. His home in Kohimarama afforded him a wonderful view of the Hauraki Gulf, where he enjoyed going boating and holidaying on Rakino Island. He owned the historic homestead in Home Bay which was originally occupied by the Sanford family, who started their fishing business from the Bay. Said to have been designed by Governor Sir George Grey, before he lost interest when Kawau Island became available, Lawford spent considerable time and money saving and partially restoring the Home Bay property and the jetty. He also had long-standing family connections at Rawhiti in the Bay of Islands.

Travelling as a salesman for the family firm C.E. Lawford, John spent some sixty years on the road procuring orders for the product lines offered by the firm which included general hardware, tools, garden tools, ships chandlery, household goods and kitchenware. These trips enabled visits to many auction houses and galleries up and down the country, where he is fondly remembered. Further visits overseas enabled him to repatriate many items of national interest.

We hope that you will join us to view this fascinating auction and take a glimpse inside the collecting life of our friend John Elliot Lawford.

Seasons Greetings,
Leigh Melville



Auction:

Lots 1–94 (live)

Tuesday 5 December

2.00pm

3 Abbey Street

Newton, Auckland

Lots 95–432 (online)

Tuesday 5 December

from 5.00pm

live.artandobject.co.nz

The Collection of John Elliot Lawford

1933–2020

Viewing:

3 Abbey Street
Newton, Auckland

Thursday 30 November	9.00am – 5.00pm
Friday 1 December	9.00am – 5.00pm
Saturday 2 December	11.00am – 4.00pm
Sunday 3 December	11.00am – 4.00pm
Monday 4 December	9.00am – 5.00pm
Tuesday 5 December	9.00am – 12.00pm

1 Artist Unknown (18th Century School)
Portrait of *Captain Bligh, H.M.S. Bounty*
watercolour and gouache
early handwritten inscription inset on verso

400 x 310mm, unsigned in fine gilt frame
Provenance: Estate of John Lawford
\$1500 – \$3000



2 Artist Unknown [19th Century English/American Marine artist]

A clipper ship in full sail flying a United States ensign
oil on canvas, circa 1850
500 x 750 mm, in fine gilt frame
Provenance: Estate of John Lawford.
\$2000 – \$4000



3 Edward Ashworth
The Residence of Colonel Robert H. Wynyard, Emily Place, Official Bay, Auckland (1848)
ink and wash
signed lower left
200 x 268 mm
A charming study showing Old St Paul's, family members in the newly established garden, an officer in regimentals very likely the Colonel standing mid veranda with two ladies on his right. The house was built in 1843 for Felton Mathew the first Surveyor General and sold by him in September 1847 for 2,000 pounds to Colonel Wynyard who commanded the British forces in New Zealand until his departure in 1858. A sketch 'Auckland from Official Bay, 1849' by Wynyard shows the house as viewed in the Ashworth's watercolour.
'The gallant Colonel has almost become a colonist having purchased for a grand



sum one of the prettiest cottages in Official Bay surrounded by a garden full of English flowers.'
The house was extensively renovated to accommodate the Colonel's growing family and 'hospitable habits'. A painting by

Major Frederick. R. Stack shows Colonel Wynyard and his family as a group in front of the entrance, circa 1860. Known as the 'Nutshell' the house became an important centre of 1850s Auckland social life. Early Auckland subjects by Edward

Ashworth are extremely rare.
Ref: Platts. Una. The Lively Capital, Auckland, 1840 – 1865, 1971, (plate 65, p 144)
Provenance: Estate of John Lawford.
\$15 000 – \$20 000

4 Charles D. Barraud
The Reverend Samuel Williams
Residence, Lake Te Aute, Hawke's Bay
watercolour, c. 1860

unsigned, mounted with gold slip
123 x 175 mm, in fine period huon pine
frame
\$2000 – \$4000



5 Francesco Bartolozzi
(Italian, 1727–1815)
Omai a Native of Ulaietea
Brought into England in the Year 1774
by Tobias Furneaux Commander of his
Majesty's Sloop Adventure
London: Publish'd according to Act of
Parlt. 25th October 1774.

Etching and stipple engraving after N.
Dance, 530 x 310mm. Framed to plate
mark in period frame.
Full length portrait of Omai [also known
as Mai], he is shown carrying the
wooden pillow-stool now in the Musée
de Tahiti et des Îles. With a feathered
circlet and tattooed hands.
Provenance: Estate of John Lawford.
\$3000 – \$4000



6 Charles D. Barraud
Exploring Party, Lake Wakatipu
Central Otago

oil on canvas
signed and dated, C.D. Barraud 1871,
lower right

780 x 1030 mm, in fine gilt frame
Provenance: Estate of John Lawford.
\$20 000 – \$25 000

7 After Sir William Beechey (United Kingdom, 1753–1839)

Ellen Smith of Nottingham oil on canvas laid down on board, depicts the sitter in a white muslin dress, her arm raised holding a grey parrot on a leash

1570 x 1060 mm, in finely carved gilt frame

A label on the reverse records the subject as 'Miss Ellen Smith of Nottingham, subsequently married to Thomas Close'.

Provenance: Estate of John Lawford. \$2000 – \$6000



8 Nicholas Chevalier

South Sea Beauty oil laid down on card artist's handwritten label, 'N. Chevalier ... 1875, South Sea Beauty' on reverse

220 x 163 mm, original fine gilt frame Provenance: Estate of John Lawford. \$4000 – \$7000



9 John Cleveley (United Kingdom, 1747–1786) [after James Cleveley]

Views in the South Seas [A complete set of 4 Views]

comprising: View of Owyhee, one of the Sandwich Islands; View of Moorea or Eimeo, one of the Society Islands; View of Hua Heine, one of the Society Islands, showing the Resolution and Discovery at anchor in the magnificent harbour of O'Wharre; View of Charlotte Sound in New Zealand.

London: published by T. Martyn, London [1787-88]

Four very fine hand-coloured aquatints by Frances Jukes, each 450 x 610mm approximately, one is slightly larger. The view of Moorea with printed frames and title, the others without them as usual. A few slight marginal repairs, matted, framed and glazed.

The famous set of views from Cook's third voyage depicting the Resolution and Discovery at anchor in the Society and Sandwich Islands including representation of the death of Cook.

The aquatints are engraved by Jukes from paintings by the artist John Cleveley apparently from sketches made by his brother James, a carpenter aboard the Resolution who was present at the death of Cook. His drawing of the event is believed to be the most authentic view.

The view of Matavai was incorrectly titled View of Charlotte Sound in New Zealand In the process of preparing the views for a European audience both landscape and islanders were presented in accordance with the precepts of classified and compositional artifice a common practice



in 18th century voyage art. Frances Jukes [1747–1812] was an important English engraver and aquatinter, he did much of his work in colour especially his landscape and marine prints. The four aquatints after the

Cleveley brothers are among his better-known works. An important and rare collection of Pacific views. Provenance: Sir Alistair McIntosh [Wellington]. Estate of John Lawford.

\$8000 – \$12 000

10 Chinese Artist Unknown
c. 1870
A British clipper off a China trade port
oil on canvas [tears to canvas in top left

sky area and some paint loss]
450x 580mm, original black & gilt
lacquered frame
Provenance: Estate of John Lawford.
\$1000 – \$2000



11 Chinese Artist Unknown
c. 1877
The British ship 'The Jessie Mc Donald.
Entering Hong Kong',
oil on canvas,
title inscribed lower middle
450 x 570 mm, original black & gilt
lacquered frame

The 'Jessie Mc Donald' is recorded
as visiting Melbourne and Sydney in
January 1877.
Provenance: Estate of John Lawford.
\$2000 – \$4000



12 Chinese Artist Unknown
c. 1870
The British clipper Holmsdale off a
China trade port, 'HOLMSDALE'
oil on canvas
inscribed lower left and artist's
signature in Chinese script to the right
450 x 588 mm, in original black & gilt

lacquered frame
The Holmsdale built in 1858 was
owned by the Orient Line/Anderson,
Anderson & Co, London. She was
employed in the India and China trades
and later in the Australian wool trade.
Provenance: Estate of John Lawford.
\$2000 – \$4000

13 William Clark
(Scotland 1803–1883)
'The Malabar', a Merchant vessel
oil on canvas
faint signature lower left
610 x 910 mm, in fine gilt frame
'The Malabar' was built at Greenock in
1835. She traded between the Clyde

and Calcutta. William Clark was the son
of a seaman whose interest in ships
led him to become Scotland's finest
ship portraitist. His work is represented
in the Peabody Essex Museum in
Salem, USA and the National Maritime
Museum.
Provenance: Estate of John Lawford.
\$2000 – \$4000



14 Robert H. Colebrook
(United Kingdom, 1762–1808)
'East View of Seringapatam' drawn on the spot
coloured aquatint print engraved by
J.W. Edy, published London 1804, full
margins

455 x 590 mm, framed & mounted
From 'Twelve Views of places in the
Kingdom of Mysore.
J.R. Abbey, Travel 426
Provenance: Estate of John Lawford.
\$300 – \$600



15 Robert Dodd
(United Kingdom, 1748–1815)
The Mutineers turning Lieutenant Bligh
and the officers and crew adrift from
the His Majesty's Ship The Bounty
aquatint, hand-coloured, published
October 2, 1790, by Evans, London. A

very good impression in fine original
condition, large margins, 495 x 663
mm, framed & mounted. Almost
certainly Stephen Walters Collection
Sale, Bonhams, March 1996.
Provenance: Estate of John Lawford.
\$6000 – \$12 000



16 After Robert Dodd
(United Kingdom, 1762–1808)
The Mutineers turning Lieutenant Bligh
and the officers adrift from the HMS
Bounty

oil on canvas laid down on board
540 x 710 mm, in early 19th century
carved oval gilt frame
Provenance: Estate of John Lawford.
\$1500 – \$3000



17 Louis I. Duperrey
Établissement de missionnaires anglais
à Kidikidi (Nouvelle-Zélande)
Drawn by Lejeune et Chazal, coloured
aquatint. No 43, framed & mounted
to plate mark, 1826, 260 x 348 mm. A

fine impression, relating to the Voyage
of the Coquille under the command of
Duperrey that visited the Bay of Islands
in 1824. Ellis 65
Provenance: Estate of John Lawford.
\$500 – \$800

18 James Baillie Fraser
(Scotland, 1783–1856)

Six coloured aquatint prints, from 'Views of Calcutta and its environs' Comprising: 'A View of The River, Shipping, And Town'; 'A View of Barrackpore House with the reach of the River'; 'A View Of The Town Hall'; 'A View Of Government House from the Court House Street, taken from

the house of Johnson & Co'; 'A View Of Government House from the Eastward'; 'A View Of Calcutta from a Point opposite to Kidderpore'. Engraved by R. Havell, London, 1824–1826. Mounted to plate marks, all in matching contemporary rose wood frames with gilt slips, 315 x 404 mm (6)
Provenance: Estate of John Lawford.
\$800 – \$1600



20 John W. Gear
(United Kingdom, 1806–1866)
Their Majesties King Rho and Queen Tamehamalu as they appeared at the Theatre Royal Drury Lane, June 1, 1824.

hand-coloured lithograph published London 1824, 350 x 270 mmm, framed & mounted.
Provenance: Estate of John Lawford.
\$300 – \$600

19 James Baillie Fraser
(Scotland, 1783–1856)

View of the Opposite of Sulkhea Side, from the Respondentia Walk with a North-wester coming on Coloured aquatint print from 'Views of Calcutta and its environs', engraved by R. Havell, framed & mounted to plate mark, slight browning on title, London 1824–1826, 310 x 450 mm
Provenance: Estate of John Lawford.
\$200 – \$300



21 John A. Gilfillan
Interior of a Native Village or 'Pa', in New Zealand situated near the town of Petre at Whanganui one of the New Zealand Company's settlements in Cook's Straits, Northern Island...

E. Walker, Day & Sons (lithographers) to the Queen. The original picture in the possession of F.G. Moore, "Proof", sepia with colouring, a good clean impression, framed to plate mark, (1852?), 540 x 680 mm. Ellis 500.
Provenance: Estate of John Lawford.
\$1000 – \$3000

22 Colonel Charles Emilius Gold
(United Kingdom, 1809–1871)

Keri – Keri Waterfall near Waitangi, Bay of Islands, Province of Auckland, New Zealand
watercolour (1847–1848)
130 x 240mm

A contemporary description very likely in Gold's hand located in a pocket on the reverse.



The artist a Lieutenant Colonel in the 65th Regiment arrived in Auckland in 1847.

He soon afterwards commanded a detachment of troops accompanying Governor George Grey to the Bay of Islands.

Provenance: Estate of John Lawford.
\$3000 – \$6000

23 John Gould & H.C. Ritcher

Notornis Mantelli (Takehe)
lithograph, hand colored, 552 x 718mm,
framed and mounted. Double page
size. Supplement to 'The Birds of
Australia', plate 76, 1869.
Provenance: Estate of John Lawford.
\$2000 – \$3000



24 Thomas Gosse
(United Kingdom,
1765–1844)

Transplanting of The Breadfruit Trees
from Otaheite

Mezzotint printed in colours and
finished by hand, painted and
engraved by Gosse, published
September 1, 1796 by Gosse at
no 212 High Holborn. A good
impression of this very rare print in
a verre églomisé mount with inset
title, the whole enclosed in a carved
contemporary gilt frame, light
sprinkling of foxing.

In 1791 after the notorious Bounty
mutiny Bligh was sent to Tahiti
with two ships the 'Providence'
and 'Assistant' with the task of
transplanting Bread Fruit Trees from
Tahiti to the West Indies to form a
cheap and reliable sustenance for
the plantation slaves. It is the loading
of the trees in tubs Gosse has
represented. The British naval officer
standing in the row boat is Bligh and
the noble Tahitian at centre, clad in
flowing robes is probably based on
Reynolds portrait of Omai.

Purchased Maggs Bros. June 2000
Provenance: Estate of John Lawford.
\$10 000 – \$15 000



25 Edwin Harris [1810–1895]

New Plymouth under Siege, 1860
oil on canvas
370 x 790 mm, in fine gilt frame
Lighters ferry to shore. Major General Pratt, Lieutenant Colonel Carey and a further fifty troops from the steam sloop HMCSS Victoria to the beleaguered town

of New Plymouth. Other vessels depicted include the paddle steamer Tasmanian Maid, the Airedale and the George Henderson. The town of New Plymouth was in a state of siege at the beginning of the first Taranaki War. Martial law was proclaimed. The settlers

were driven into town, their homesteads burnt by Māori making it necessary to constrict the occupied area and entrench the town. Lieutenant Colonel Carey together with men of the 40th Regiment arrived off New Plymouth aboard the steamer HMS Victoria on the evening of 3rd August

1860. Their mission to reinforce the garrison which numbered about twelve hundred men. The historical events recorded in this rare oil painting relate to a watercolour depiction of the same scene held in the collections of the Alexander Turnbull Library.



Edwin Harris arrived in NZ in 1841 and is noted for his early views of New Plymouth. He worked briefly as a surveyor for the Plymouth Company and farmed a property in the vicinity of town. His daughter Emily Cumming Harris was a noted botanical artist. Provenance: Estate of John Lawford. \$25 000 – \$30 000



26 John Hayter
(United Kingdom, 1800–1895)

Tamehamalu
Her Majesty Queen of the Sandwich Islands drawn from life.
hand-tinted lithograph, published J Dickinson, London 1824, 350 x 270 mm, framed & mounted.
Provenance: Estate of John Lawford.
\$300 – \$600



27 Samuel Howitt
(United Kingdom, 1756–1822)

Four coloured aquatint prints
Published by E. Orme, London 1806.
Comprising: 'Hunters Going Out in The Morning', 'The Hog At Bay', 'The Hog Deer At Bay', (faded), 'Shooters Coming

By Surprise Upon A Tiger'; views after Captain Thomas Williamson, titles in French & English.
355 x 470 mm mounted to plate marks and framed.
Provenance: Estate of John Lawford.
\$600 – \$800

28 Samuel Howitt
(United Kingdom, 1756–1822)
'Rhinoceros Hunted by Elephants' &
'Decoy Elephants Catching a Male'
Views after Captain Thomas



Williamson, titles in French & English.
Two coloured aquatint prints, framed &
mounted to plate mark, published by E.
Orme, London 1806, 355 x 470 mm.
Provenance: Estate of John Lawford.
\$300 – \$600

29 74th Highland Regiment of
Foot. Pennant with battle honours for
Serlingapatam (1799) and Assaye (1803)
The Elephant emblem awarded to the
regiment for Assaye surrounded by
laurels with unidentified armorials on
the reverse, all very finely embroidered
in highlighted colours on silk, some
signs of wear, good over all condition
considering age, ca 1810. 310x 570
mm, mounted & framed.
The victories by the British East India
Company in these two important
campaigns over the Kingdom of
Mysore and the Maratha Empire
consolidated British power in India.
Provenance: Estate of John Lawford.
\$500 – \$1000



30 John Jacobi
(Austria, 1733–1797)
Omai, A Native of the Island of Utieta
Mezzotint full length portrait of Omai,
after a painting ca. 1776, by Sir Joshua
Reynolds. (Published by Jacobi August
15, 1777), a strong impression. imprint
trimmed.

Omai travelled with Captain Cook as an
interpreter on his 2nd & 3rd voyages.
He is portrayed in flowing robes and
white turban.
Provenance: Estate of John Lawford.
\$4000 – \$5000



31 John Kinder
Melanesian Mission College,
Kohimaramara, July 1860 – From the
Māori village on the cliff
watercolour

signed lower right, title & signature in
artist's hand, pencil, pen and wash
240 x 345 mm
Provenance: Estate of John Lawford.
\$8000 – \$16 000



32 Robert Laurie
(United Kingdom, 1755–1836)

'The Poa' [Tui]
New Zealand's Rarest Print. 'The Poa [Tui] From the bird which was brought from New Zealand by Captain Cook in his late voyage around the world, and which obtained from the Society of Arts, a premium of 30 Guineas – Sold at No.1. Johnsons Court. Fleet street and No 37 Maiden Lane, Convent Garden. Robert Laurie Laurie del etc fec'. Mezzotint printed in oil colours 360 x 250mm around the plate mark, [1776]. In fine original condition as published.
The tui on the branch, its head turned to catch an insect, drawn from a specimen taken back to England by Captain Cook after his second voyage to New Zealand. It was separately issued in 1776 and is the earliest English print in oil colours, a process invented by the engraver Robert Laurie a young Scottish designer who seized on the excitement created by Cook's first voyage to use the first Tui seen in England as the subject for his newly invented process. The Poa was the first print to be published using the new process for which Laurie was awarded a premium of 30 guineas by the Society of Arts.

This print is a rare 1776 first issue from the same plate as the specimen held by the Alexander Turnbull Library; bequest of Sir Alistair McIntosh, 1976. There are only around 10 known copies of the coloured. Ellis 53.
Provenance: Maggs, London; Estate of John Lawford.
\$15 000 – \$20 000



33 J. Mackay

Merchant Vessel in full sail with steamer in left background
oil on canvas, circa 1910
signed lower right
500 x 740 mm, in finely carved, rococo gilt frame with slip
Provenance: Estate of John Lawford.
\$800 – \$1200



34 Albin Martin
Imperial Troops Camp in the New Zealand Bush, (1860)
oil on canvas
250 x 290 mm
A rare subject for the period by a professional artist capturing the

atmosphere of a military bivouac settling down for the night with arms correctly piled.
Provenance: Estate of John Lawford.
\$4000 – \$8000

35 Francis McCracken

Roses
oil on canvas
signed and dated 1931 lower right,
inscribed 'No 1 Roses 15 (pounds)
Francis McCracken, Edinburgh' on
stretcher

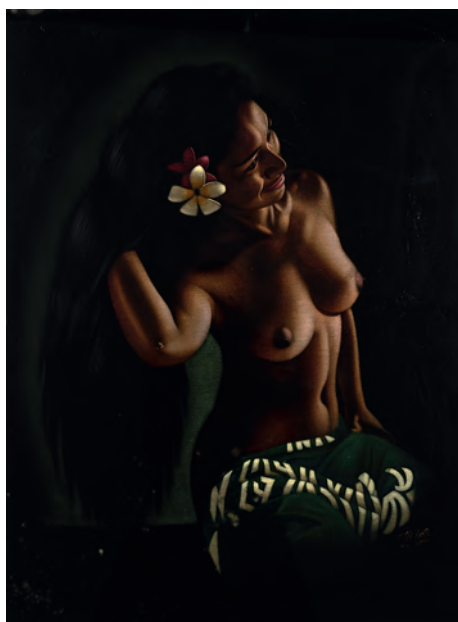
740 x 510 mm, framed
Provenance: Estate of John Lawford.
\$6000 – \$8000



36 After Murillo (1617–1682)

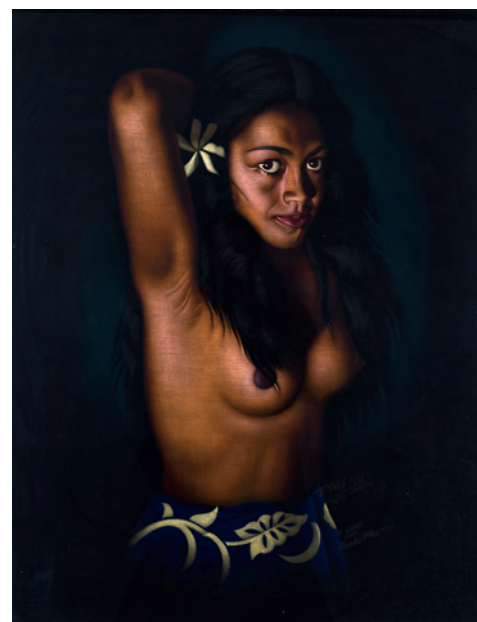
The Flower Girl
oil on canvas
1090 x 850 mm in fine carved gilt &
gesso frame
A fine 19th century copy of one the
artist's most famous genre paintings.
It was first recorded in Paris in 1737.

Described by Waagen as 'A choice
example of the very peculiar contrasts
and harmony of colours which give
Murillo's pictures such a magical effect.'
The original is in the Dulwich Gallery
Picture Gallery, London.
Provenance: Estate of John Lawford.
\$2000 – \$6000



37 Charles McPhee

Tahitian Girl
oil on velvet
signed lower right 'McPhee Mon
Desire', 1950s reviews of the artist's
work from San Francisco and Pacific
newspapers mounted on reverse
880 x 660 mm, framed
Provenance: Estate of John Lawford
\$1000 – \$1500



38 Charles McPhee

Tahitian Innocence
oil on velvet
signed lower right 'McPhee 1961
Tahitian Innocence To John from
Charles McPhee N.Z. 61'
840 x 665 mm, framed
Provenance: Estate of John Lawford
\$1000 – \$1500

39 Joseph Jenner Merrett [attributed]

View Auckland Looking towards the North Shore with Māori group herding pigs in the foreground

watercolour heightened with ink, circa 1855
 unsigned
 178 x 240 mm, framed & mounted.
 A rare view showing the lay out of the

early settlement of Auckland in detail, Old St Paul's church in Emily Place, the Albert Barracks, other important buildings, and outer limits of the settlement.
 Relates to several similar views of

Auckland by Merrett painted during the same period.
 Provenance: Estate of John Lawford.
 \$10 000 – \$15 000



40 Commander Richard A. Oliver

Jane Grey, Auckland, wearing a feather cape watercolour, 1851
 title inscribed in pencil, certificate of authenticity from the artist's great granddaughter, exhibition labels & diary extracts mounted on the reverse
 180 x 260 mm
 Jane Maria Grey, 1834 – 1922. A beauty, the artist notes 'famous for her personal attractions'. She married several times or had liaisons with British naval and military officers. Jane was one of five children born to Alexander Grey a blacksmith and Hinerangi Kotira from Taranaki who was

educated at one of the Bay of Islands missions. She appears in several of Oliver's paintings and is at the far left of a group in 'Half Castes at Pomare's Pah, Bay of Islands. (1851) National Library Collection. An older sister Guide Sophia Grey, 1832–1911 also known as Te Paea Hinerangi became principal guide to the Pink and White Terraces. Provenance: Estate of John Lawford. \$8000 – \$12 000



41 Edward William Payton
 Partington's Windmill watercolour inscribed verso 'An Old Auckland Landmark, E.W. Payton 1914'
 250 x 270mm approximately, framed with 2 newspaper clippings laid into mount verso and photographic postcard of the mill postmarked 1928.

Payton was the foundation Director of Elam school of art. View of the Auckland flour mill commissioned by Charles Frederick Partington in 1850 and demolished in 1950. Its loss was a catalyst for the creation of the National Historic Places Trust Act in 1955. Provenance: Estate of John Lawford. \$600 – \$800

42 James Crowe Richmond
 Kincaid, Kaikoura, April 5 1864 –
 Homestead of W. Busk [early settler]
 with cattle, pet cats and dogs
 watercolour
 title inscribed lower left
 180 x 290 mm
 Provenance: Estate of John Lawford.
 \$2000 – \$4000



43 Christopher Perkins
 Harvest Time, Northern Europe
 oil on canvas laid down on board
 unsigned
 490 x 590 mm, framed
 Provenance: Estate of John Lawford.
 \$3000 – \$5000



44 Charles Pears
 (United Kingdom, 1873–1958)
 A Gale off the Isle of Wight
 oil on canvas
 signed Chas Pears lower left, artist's
 handwritten inscription on reverse of
 stretcher 'A Gale off the Isle of Wight
 by Chas. Pears R.O.I., R.S.M.A.'
 500 x 620 mm, original wooden frame
 Provenance: Estate of John Lawford.
 \$1200 – \$2500

45 James Crowe Richmond
 Mount Egmont
 oil on canvas (1870)
 unsigned
 580 x 910 mm, fine gilt frame
 Provenance: Estate of John Lawford.
 \$8000 – \$16 000

46 Henry Singleton
(United Kingdom, 1766–1839)

The Last Effort and Fall of Tippoo Sultan
Pictorial title in English & French,
stipple engraving by N. Schanvonnetti,
a good clean strong impression with
full margins, published London 1802.
590 x 710 mm, framed & mounted.
Provenance: Estate of John Lawford.
\$500 – \$1000



47 William Strutt

Untitled – Study of a Sleeping Lioness
pencil and wash sketch
dated 'Sept 1st 1886' in the artist's
hand, lower right, light toning & foxing
100 x 270 mm, framed & mounted
The artist made studies of lions at the
London Zoo and at a menagerie at
Margate. They were the basis for such
paintings as 'A Royal Siesta' his first
lion picture exhibited with the Royal
Academy in 1888.
Provenance: Estate of John Lawford.
\$400 – \$600



48 Major Frederick R. Stack
Auckland, the Harbor, North Shore and
Rangitoto from Bastion Point
oil on canvas (1855)
310 x 650 mm, in a fine gilt frame

Provenance: Colonel Robert Henry
Wynyard thence by descent to his great
grandson Lewin Wynyard. Attributed by
family tradition and connection to the
artist.

An important view showing shipping
in the harbour and in detail the early
settlement of the North Shore.
Provenance: Estate of John Lawford.
\$15 000 – \$25 000

49 No lot.

50 E. Mervyn Taylor

Ruru
wood engraving
Title inscribed and signed
85 x 75mm, mounted and framed
Provenance: Estate of John Lawford.
\$600 – \$800



51 A Pair of Extinct Male and Female Huia Birds
The female with raised head and open beak, the male posed at slightly lower level alongside her, both perched upon a small tree stump, the pair as mounted in 19th Century, unrestored

condition, some tail feathers lacking on both, enclosed in later steel and glass display case, (not recent), 560 x 540mm overall.
Provenance: Estate of John Lawford.
\$15 000 – \$20 000



52 Captain James Cook

Samples of the Pacific tapa cloth collected on the three voyages of Captain James Cook: 1769–1779 mounted, 170 x 170 mm, framed & mounted
Provenance: Estate of John Lawford.
\$600 – \$800



53 Captain James Cook
Samples of the Pacific tapa cloth collected on the three voyages of Captain James Cook: 1769–1779

mounted, 260 x 180 mm, framed & mounted
Provenance: Estate of John Lawford.
\$600 – \$800

54 Carver Unknown

Tekoteko Figure
carved Totara wood and pāua shell
735 x 100 x 90mm, Y21805

Provenance:

Private collection, Auckland.
Previously in a private collection in
the United Kingdom and passed by
descent. Repatriated circa 2000.

\$150 000 – \$250 000





55 Heru Iwi
 Rare whalebone hair comb
 pre- European period, manaia
 decoration, with 10 teeth
 L. 193mm, Y13838
 Provenance: Florence Court Sale
 [2009]. Estate of John Lawford
 \$15 000 – \$20 000



56 Kaitaka Aronui
 Mid-19th century of classic traditional
 style woven from muka [fine flax]
 with narrow side borders and deeper
 lower border of tāniko. The wide lower
 border of striking diamond shaped
 patterning with the traditional dyed

fibres highlighted with brightly coloured
 wool yarns
 Approximate: 1240 x 770 mm, of
 unusually small size possibly woven for
 a child. Y7194
 Provenance: Estate of John Lawford
 \$4000 – \$6000



57 Kāka pōria
 19th century pounamu bird leg ring
 Central hole, and a smaller hole drilled
 near top edge. Outer edge stone circle
 has 3 sets of stone protrusions, bottom
 and side edges of ring. Entire surface
 well polished and worn smooth.
 L. 369mm, Y22357
 Provenance: Estate of John Lawford
 \$1000 – \$1500

58 Matau

Carved one piece whalebone fish hook, late 18th to early 19th century the top carved and with hole for attaching the muka cord, non-barbed with lashing groove.

L. 104mm [approx], Y 15299
Provenance: Estate of John Lawford.
\$5000 – \$8000



59 Patu Okewa

Rare Chatham Island curved stone okewa [hand club] bird shape, oval cross section. Worn oval knob on the top of the handle.

Surface pitted and some flake scars, surfaces worn.
L. 275mm [approx]. Y22367
Provenance: Estate of John Lawford.
\$4000 – \$6000

60 Mere Pounamu [18th century]

An exceptional pre-European pounamu mere of a translucent medium green colour with waves of white feathering, large well worn stone drilled hourglass hole.

L. 380mm, Y10713
Known as the Kronfeld Mere after the first collectors Dr. & Mrs. M. Kronfeld who presented it to the New Zealand Shipping Company Ltd in Wellington

where Dr. Kronfeld was the Port Health Officer.

The mere was displayed on the R.M.S. Ruahine which went on the London Passenger Service, it was returned to New Zealand on her withdrawal from the passenger service.

Provenance: Kronfeld, Dunbar Sloane, Estate of John Lawford.
\$40 000 – \$60 000



AN OLD JADE WEAPON OF WAR
[PATU POUNAMU]

FROM THE PRE-EUROPEAN PERIOD OF NEW ZEALAND HISTORY.

IN EARLY MAORI CULTURE THE JADE MERE MARKED A CHIEF OF RANK AND AUTHORITY. THIS IS AN ESPECIALLY FINE OLD GREENSTONE WEAPON WHICH WAS MANUFACTURED LONG BEFORE THE ARRIVAL OF EUROPEAN SETTLERS TO THE SHORES OF NEW ZEALAND. IT HAS BEEN FORMED ENTIRELY BY SANDSTONE ABRASION FROM THE ORIGINAL ROCK. GREENSTONE WAS, TO THE ANCIENT MAORI, A PRECIOUS AND SACRED MATERIAL SECURED FROM RIVERS (TARAMAKAU AND ARAHURU) ON THE WEST COAST OF THE SOUTH ISLAND AND TRADED THROUGHOUT NEW ZEALAND.

PRESENTED BY
Dr. AND Mrs. M. KRONFELD
TO
THE NEW ZEALAND SHIPPING COMPANY LIMITED
PERMITTED BY THE DEPARTMENT OF INTERNAL AFFAIRS
TO BE PLACED ABOARD R.M.S. "RUAHINE" BUT TO BE RETURNED TO NEW ZEALAND
ON HER WITHDRAWAL FROM THE PASSENGER SERVICE.

61 Patu Onewa

A large 19th century stone nephrite patu of traditional form with spatulate tapered end, the butt end with three concentric ridges and partially drilled hourglass suspension hole.
L. 410mm, Y7146
Provenance: Estate of John Lawford.
\$6000 – \$8000

62 Patu Onewa

A large impressive 19th century nephrite stone club of traditional form, rounded base with very small side chips off both sides of the blade. Short cylindrical handle with hourglass suspension hole, oval knob with four concentric ridges and one at the centre. Entire surface polished.
L.418mm, Y22365
Provenance: Estate of John Lawford.
\$10 000 – \$15 000



63 Patu Onewa

19th century stone club of traditional form with spatulated tapered blade, the butt end with four concentric ridges and one in the centre, hourglass suspension hole.
Provenance: Estate of John Lawford.
L. 400 mm, Y14049
\$8000 – \$12 000

64 Patu Onewa

19th century stone hand club of traditional form, rounded base with a few very small chips off one side of blade. Short cylindrical handle and hourglass suspension hole oval knob with four concentric ridges and one at the centre. Entire surface polished over hammer-dressing.
L. 395 mm, Y22363
Provenance: Estate of John Lawford.
\$4000 – \$6000

65 Patu Onewa
19th century stone club rounded base with small side chips and one larger chip from base. Short cylindrical handle with hourglass suspension hole, oval knob with four concentric ridges and one at the centre. Entire surface polished over hammer dressing. L. 385 mm, Y22364
Provenance: Estate of John Lawford.
\$3000 – \$6000



66 Patu Parāoa
Early 19th century whalebone club with rounded base small chip to one side. Short flat handle with slightly wider flat knob at the top, two shallow horizontal ridges on each side of the knob and a small square suspension hole [edges worn] L. 386 mm, Y22366
Provenance: Estate of John Lawford.
\$3000 – \$5000



67 Patuki – Club
Late 19th century club carved from medium brown wood with light patina, sides taper to a single triangular point. Grooved knob at top of the handle with single suspension hole. Short plain shaft tapering to a four sided fully carved club. L. 314 mm, Y22379
Provenance: Sotheby's auction label dated 9 May 1977. Estate of John Lawford.
\$3000 – \$4000



68 A rare portrait tile of the guide 'Sophia' produced by George Cartlidge at Sherwin Cotton Pottery in Staffordshire ca 1900. Titled top right corner. Depicted wearing a korowai, pounamu tiki and pendant and huia feathers in her hair. With the artist George Cartlidge's monogram, 215 x 140mm and in the original black frame.

Created using a technique popular at the time, rendering photographs on ceramic surfaces for a three-dimensional image. The technique involved combining the use of varying monochromatic glaze and clay body depths.
\$1000 – \$1500

69 Tewhatewha

Long handled fighting staff carved from dark brown wood with a rich patina, perforated suspension hole on inner edge of the blade. Long tapered shaft, with three grooves carved a quarter of the way up, large chip to butt end.

L. 1325 mm, Y22375

Provenance: Estate of John Lawford.
\$3000 – \$4000

**70** Tewhatewha

Long handled fighting staff carved from medium brown wood, perforated hole on inner staff. Long tapered shaft, Wheku figure carved with shell inlaid eyes, almost halfway up. Small chip to butt end.

L. 1354, Y22374

Provenance: Estate of John Lawford.
\$3500 – \$5000

71 Taiaha

Fighting staff carved from medium brown wood, slender plain shaft tapering into a narrow rounded blade. Carved upoko and arero with double rauponga spiral pattern, plain eyes.

L. 1448 mm, Y22370

Provenance: Estate of John Lawford.
\$3000 – \$4000

**72** Taiaha

Fully finely carved fighting staff carved in dark brown wood, upoko and arero feature double rauponga spiral of pākati and haehae, small chips, notched pāua eyes [lacking one]. Eight further sets of eyes dispersed across the shaft some of the shell inlay missing. Various carved patterning throughout. Numbered 91939 in white ink below.

L. 1050mm, Y No'd twice Y22371 & 91939

Provenance: Estate of John Lawford.

\$2000 – \$3000

73 Taiaha

A long fighting staff 19th century or earlier carved from dark reddish wood with plain shaft tapering into broad blade. Finely carved upoko and arero, features double rauponga spiral pattern of pākati and haehae, plain eyes. Lip features three notches each side resembling teeth. Partial old sticker label on blade end, writing indecipherable.

L. 1060 mm, Y22372

Provenance: Estate of John Lawford.
\$3000 – \$4000

**74** Taiaha

A small 19th century fighting staff the carved upoko and arero with finely carved with rauponga spirals terminating at a pointed tip. L.215mm, 50mm wide at spatulate end, Y6393

Provenance: Estate of John Lawford.
\$1000 – \$2000

75 Toki – Adze

Large dark green pounamu toki
Straight blade with sharp corners, steep short bevel with marked chin. Straight vertical sides taper to damaged pole. Entire surface polished.
L. 292 mm, Y22362
Provenance: Estate of John Lawford.
\$4000 – \$8000



76 Toki – Adze

19th century or earlier medium to pale green pounamu toki. Straight blade with small chips along cutting edge, steep short bevel with rounded chin. Straight vertical sides to rounded poll, groups of small notches along both ventral edges. Poll is reduced in thickness, with suspension hole, a deep lateral groove across poll below the hole. Entire surface polished.
L. 230mm Y22361
Provenance: Estate of John Lawford.
\$3000 – \$5000



77 Toki – Adze

Large mottled medium green pounamu toki, 19th century or earlier of quadrangular tapering form with straight vertical sides, poll slightly reduced in thickness. Short steep bevel and sharp blade.
L. 290mm, Y15293
Provenance: Estate of John Lawford.
\$6000 – \$8000



78 Toki – Adze

Large rare greywacke stone toki quadrangular form, straight vertical sides, with unusual small notches along the length of the four edges of the adze up to the poll, flakes to poll. Slightly curved sharp rounded blade.
L. 350mm, Y10972
Provenance: Kenneth Webster Collection.
Estate of John Lawford.
\$8000 – \$10 000



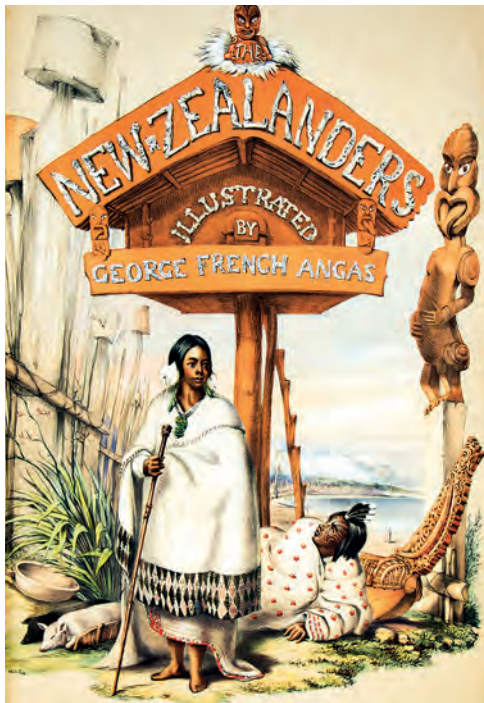
79 George French Angas

The New Zealanders Illustrated
 London: Thomas McLean 1846–1847.
 One of the first issues in 10 parts,
 555mm, each with the original cover-title,

illustrated grey paper covers printed in red [No's 1-4] and tan [No's 5-10] all with red cloth spines, loss to the corner of one back cover. Dedication page, 7 p.l., [60] l. of explanatory notes on the 60 hand coloured tinted lithographs, extra

hand coloured title page. Finger marks and some spasmodic light foxing, a few short tape repairs on margins and plate xiv with a tear, neatly repaired verso with paper. Plates generally clean. Housed in a contemporary half leather clamshell box

with gilt spine title.
 With the book plates of John Hadmar Sticht and F.B. Lewis. Bagnall 114a
 Provenance: Estate of John Lawford.
 \$20 000 – \$25 000



80 Major Frederick R. Stack

Views in the Province of Auckland, New Zealand
 Dedicated by Special Permission to His Excellency Sir George Grey Governor of New Zealand. London: Day and Son Lithographers to the Queen [1862]. 4pp. of text, 6 hand-coloured plates of views of Auckland. (Plates cut-down without loss, and mounted, dedication and text mounted or window-mounted, some light soiling to mounts.) original paper wrappers mounted bound-in (wrappers soiled). Plates are mainly clean, the colour vibrant, Folio 605mm, bound in brown cloth with gilt titles front board. A very tidy copy of a rare item. Bagnall 5290
 A rare series of views of Auckland. The fine plates are titled 1. View of Auckland

Harbour ... Taken during the regatta of January 1862 (the race of the Maori war canoes; 2. View of Auckland ... from the crater of Mount Eden; 3. View of Auckland ... from the lake on the north shore; 4. View of the Firth of the Thames, Waitemata, Tamaki, and Gulf of Hauraki, from the Howick Ranges; 5. View of the Wairoa Creek (pheasant shooting on the estate of Alexander Kennedy...) on the road leading to the Wairoa Valley; 6. View from the ranges, overlooking the entrance to the Manukau Harbour, Auckland. The text comprises both topographical descriptions and some comment on the social life of the colony: it includes some original comments



from Stack ('Sir George Grey has lately purchased an island (the "Kawau") containing several thousand acres in the Gulf of Hauraki, about thirty miles from Auckland, and on it he intends turning loose the Red deer sent to him by the late

Prince Consort'), also lengthy passages extracted from William Swainson's New Zealand and its Colonization (London: 1859). Hocken p.221. [Ellis, 624-629] Provenance: Estate of John Lawford. \$2000 – \$3000



81 Sir Walter Lawry Buller

A History of the birds of New Zealand
 London: John Van Voorst 1873, 1st edition. xxiii, 384p, [5]p of reviews and notices, frontis, illustrated, 35 hand-coloured plates. Some foxing mainly on endpapers, a few spots elsewhere but text generally clean, p8/9 has chips along the fore edge margin. The plates are very clean with the odd finger mark and spot. 205 mm, bound in the original green cloth with gilt notornis and titles, some wear to corners, and edges. A nice copy.

Provenance: Estate of John Lawford.
 \$7000 – \$10 000



82 Sir Walter Lawry Buller
 [association copy]

Supplement to the *Birds of New Zealand*, 2 volumes
 London: Published [for the subscribers] by the author 1905.
 Vol. I. xlix, 200p, frontis [portrait], 5 hand coloured plates and text illustrations. Light browning and spotting on end papers, and frontis, contents and plates clean.
 Vol. II. [2]pp, 178p, 7 hand coloured plates and text illustrations. Light browning to endpapers, text and plates clean. 385mm, both vols in original red buckram with gilt kiwi, some mottling to the cloth of both volumes, however a VG set.



Contemporary signature of John T [Tiffin] Stewart, Wanganui [Engineer, Surveyor and Mapper], and another inscription gifting the books to his daughter Ellen dated 1913. Ellen Sargeant [nee Stewart] figures largely in the early history of the Sarjeant Gallery and the acquisition of art for its collection.
 Provenance: Estate of John Lawford.
 \$3000 – \$5000

83 Sir Walter Lawry Buller

A History of the Birds of New Zealand
 Second edition, 2 volumes. London published [for the Subscribers] by the author 1888.
 Vol. I. lxxxiv, 250p, [6]pp of reviews, 24 colour plates, foxing front and back few pages, otherwise text mostly clean, a few spots on some plates.
 373mm, rebaced using part of the original spines, some gilt rubbed from notornis front cover.
 Vol. II. lx, 359p, 26 plates [24 colour], foxing front and back few pages, otherwise text mostly clean, plates clean. 373mm, original half leather with green cloth boards & gilt notornis, spine strip worn and lacking caps spine ends, front hinge frail.
 Provenance: Estate of John Lawford.
 \$4000 – \$5000



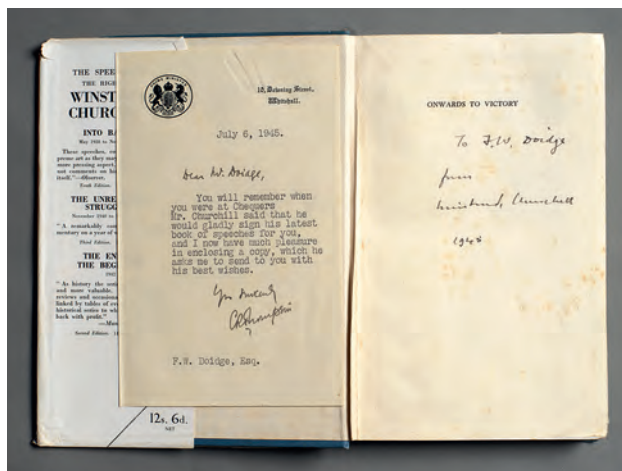
84 W. Spencer Churchill
Savrola
A Tale of the Revolution in Laurania.
Longman's Colonial Library, Longmans
Green and Co 1900. A rare copy of
the first edition first issue of Winston
Churchill's only novel. ix, 345p.
advertisement for The River War and
The Story of the Malakand Field Force
at end. Bound in the original Longmans
Colonial Library design featuring a

schooner at sea. A little light spotting
with the name in pen C.I.C Powell Jr on
page 1. original endpapers binding tight,
covers a little scuffed and with tears
spine ends of back hinge.
A very good copy of a rare book.
Provenance: Estate of John Lawford.
\$600 – \$800



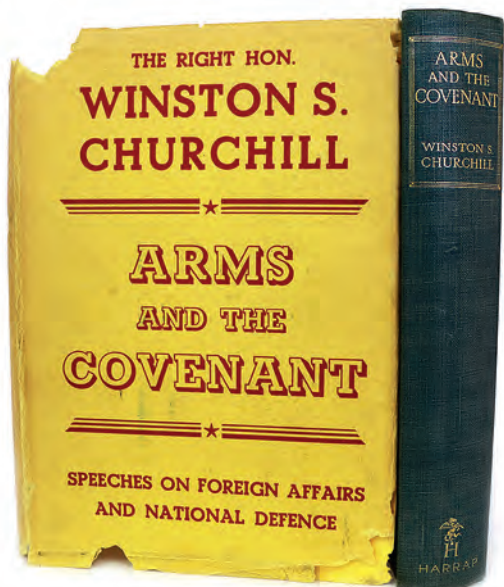
85 Winston Churchill [signed]
Onwards to Victory
War Speeches by the Right Hon.....
Compiled by Charles Eade. Cassell
and Co 1944. Lacking free endpaper,
DJ chips.
The Half title is inscribed "To F.W.
Doidge from Winston Churchill 1945".
Also loosely enclosed is a letter on
Prime Ministerial letterhead To F.W.
Doidge dated 1945, asking him to
remember when he was at Chequers
Mr Churchill had said he would gladly
sign his latest book "I now have much
pleasure in enclosing a copy, which he

asks me to send to you with his best
wishes" and signed C.R. Thompson
[aide de camp to Winston Churchill].
Frederick Widdowson Doidge was
appointed High Commissioner for
New Zealand in the United Kingdom in
1953, the twin summits of his career in
London were the Coronation of Queen
Elizabeth and the Commonwealth
Prime Ministers Conference where
he renewed his contacts with Prime
Minister Winston Churchill and with
Beaverbrook. He died in 1954.
Te Ara the Cyclopaedia of NZ.
Provenance: Estate of John Lawford.
\$1500 – \$2000



86 Winston Churchill
Arms and the Covenant
Speeches by The Right Hon. Winston
S. Churchill. Compiled by Randolph
Churchill. George Harrop & Co Ltd
1938. first edition. 466p, 23cms, blue
publisher's cloth with gilt spine titles,
[only 5000 copies of this first British
impression, were issued, 3381 were
sold at the original price and in 1940,
1382 copies were sold at a lower
price]. This copy is in the later variant

yellow DJ with red titles from the 1940
remainder issue. Binding has light shelf
fading and the DJ creases and with
some losses. These yellow wartime
DJs are exceedingly rare, considerably
more so than their pale blue first issue
counterparts.
Provenance: Estate of John Lawford.
\$400 – \$600



87 Winston Churchill
Signed Letter and Photograph
Typescript letter on 10 Downing Street
letterhead signed in ink 'Winston
Churchill'. The letter requesting the
King to submit his approval that the
dignity of Barony of the United
Kingdom be conferred upon Frederick
James Leathers Esq, dated 1st May
1941.
Photograph of Winston Churchill
and Anthony Eden. Original press
photograph description verso 'Meeting

of Allied Statesmen at St James Palace.
At the end of the meeting the King
called and met the statesmen'. This
image titled 'Mr Winston Churchill
has a word with Mr. Anthony Eden.
12/6/41'.
The photograph is inscribed verso
1988. For John Lawford from Nicholas
Lawford [who was there as A.E's
Private Secretary]. Framed and
mounted.
Provenance: Estate of John Lawford.
\$2000 – \$4000

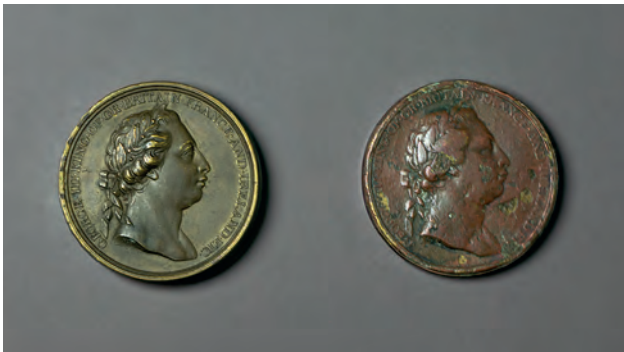
88 Captain James Cook

Two Resolution and Adventure bronze medals, 1772–1773
Original medals, struck for distribution to indigenous people, the obverse side depicting The head of George III and on

the reverse side the ships Resolution and Adventure. Inscribed 'SAILED FROM ENGLAND MARCH MDCCLXXII'. England: designed by William Barnett 1772 and struck in 'platina' (a mix of copper, zinc and iron), records show the

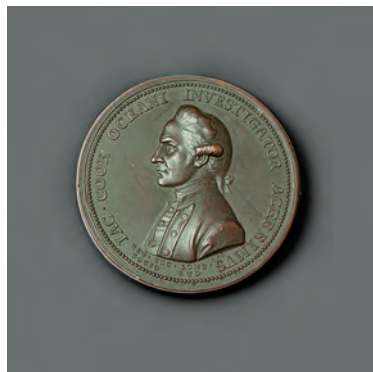
medals were distributed to Māori in three different locations in New Zealand. The reverse of one of the medals shows a pattern of abrasion due to age and wear, possibly, consistent with the original purpose of the medals which were to be

worn by recipients as emblems of the Kings regard. The other medal unabraded with few signs of wear. Suspension holes visible to the top of both medals. Provenance: Estate of John Lawford. \$6000 – \$12 000



89 Royal Society Cook Memorial Medal

Bronze medal commissioned by the Royal Society to commemorate the death of Cook in 1779
England: Lewis Pingo Engraver, 1784. 43mm. The obverse depicting a bust of Cook in uniform with the inscription 'IZC COOK OCREANI INVESTIGATOR ACERRIMVS' ['The Most Intrepid Investigator of the Seas'], the reverse shows Fortuna leaning on a column with a sceptre in one hand and a rudder in the other, ['Our Men Have



Left Nothing Untried']. 577 of these medals were struck in bronze. Provenance: Estate of John Lawford. \$1500 – \$2000



90 Captain James Cook

A set of the Accounts of the Voyages
Hawkesworth, John
[First Voyage] An Account of the Voyages
Undertaken by the order of His Present
Majesty for making discoveries in the
Southern Hemisphere, and successively
performed by Commander Byron, Captain

Wallis, Captain Carteret, and Captain
Cook, in the Dolphin, the Swallow and
the Endeavour: drawn up from the
journals which were kept by the several
commanders, and from the papers of
Joseph Banks Esq.
Vol. I. 6 p.l., xxxvi, 456pp, 20 charts and
plates; Vol. II. xiv, 410pp, 22 charts, and

plates; Vol. III., 395pp, 9 charts and plates,
short, closed tear to map of New Zealand.
London: Printed for W. Strahan and T.
Cadell 1773. Three volumes. First edition,
this issue includes "A Chart of the Straits
of Magellan."
Cook, James.

[Second Voyage] – A Voyage Towards
the South Pole, and round
the World. Performed in
His Majesty's ships the
Resolution and Adventure,
in the years, 1772, 1773,
1774, and 1775. Written by
James Cook, Commander of
the Resolution. In which is
included Captain Furneaux's
narrative of his proceedings
in the Adventure during the
separation of the ships.
Vol. I. xl, 378pp, frontis
[portrait], 36 charts and
plates. Vol. II. [4] l., 396pp,
fldg table, 27 charts and
plates. London: Strahan
and Cadell 1777 first edition.
With Sir John Pringles 'A
Discourse upon some late
improvements of the means
of preserving the health of
mariners'. Two volumes,

Cook James & James King
[Third Voyage] – A Voyage to the Pacific
Ocean undertaken by the Command
of His Majesty for making Discoveries in the
Northern Hemisphere. To Determine the
Position and the Extent of the West Side
of North America; its Distance from Asia;
and the Practicability of a North West
Passage to North America. Performed
under the Direction of Captains Cook,
Clerke and Gore in His Majesty's Ships
the Resolution and Discovery. In the Years
1776, 1777, 1778, 1779 and 1780.
London: Printed by W and A Strahan 1784
first edition. Three volumes and one folio
atlas. Vol. I. lcvii, 421p, 7 plates; Vol. II. [7]
p.l., 548p, 11 plates; Vol. III. [7] p.l., 556p, 6
plates. Atlas 63 plates. Total of 87.
Text blocks all measure 300m, uniformly
bound in contemporary leather boards,
re-backed with spines renewed to style,
original endpapers. Scattered toning,
foxing and offsetting, edges lightly
trimmed. Bindings to text volumes tight.
Folio rebound in half leather with marbled
boards a few spots and some offsetting. A
very clean and attractive set.
Provenance: Estate of John Lawford.
\$20 000 – \$30 000



91 Augustus Earle

Sketches Illustrative of the Native
Inhabitants and Islands of New Zealand
By Augustus Earle, Draughtsman of HMS
Beagle, 1838.
London: Lithographed and Published
under the Auspices of the New Zealand
Association by Robert Martin and Co
... 1838. Cover title. 1 l., descriptive
letterpress, 10 plates, 550 x 364mm. At
head of title New Zealand Association
Coat of Arms. The cover title is age toned
and there are expert repairs to corners,
as well as to the corners of the back cover.
The plates are clean with a few spasmodic
spots. Bagnall 1758.
The folio has been bound with its original

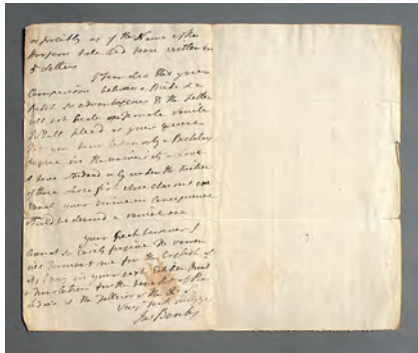
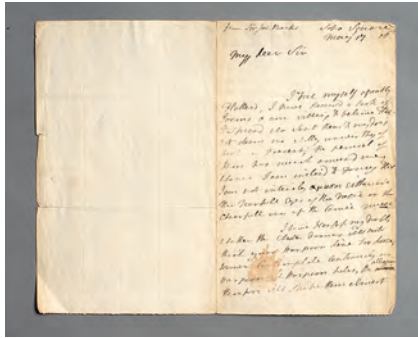
paper covers into attractive half maroon
leather with marbled boards, leather title
label front board and gilt spine titles and
housed in a custom made clamshell box.
2. In the same box and loosely enclosed in
a similar binding 3 hand-coloured plates
by Earle, all lithographed and published by
R. Martin and Co – [1] Village of Parkuni,
River Hokianga. Trimmed, light toning,
short tear. 270 x 375mm; [2] Kororadika
Beach. Light marginal toning, image clean.
320 x 425mm; [3] The Wounded Chief
Hongi & His Family. Toning and pen mark
on margin. 320 x 455mm.
Provenance: Estate of John Lawford.
\$20 000 – \$30 000



92 Manuscript Letter – Sir Joseph Banks

Autographed letter signed Jos Banks on folded notepaper, 2pp to an unnamed correspondent dated Soho Square, May 17, 06 [1806].

In the letter he thanks his correspondent for a book of satirical poems 'the perusal of which has amused me....' skits the writer on Harpoon and holes, suggest his comparisons 'between a Bride and a Bitch so advantageous to the latter will not create one female smile...' and concludes 'pray in your next edition print a translation for the benefit of the Ladies and the Fellows of the R.S. [Royal Society]. A 1p transcript of the letter in the hand of the renowned New Zealand Collector Dr. C.A.O. Fox
Provenance: Dr Charles Fox Catalogue 1973.
\$400 – \$600



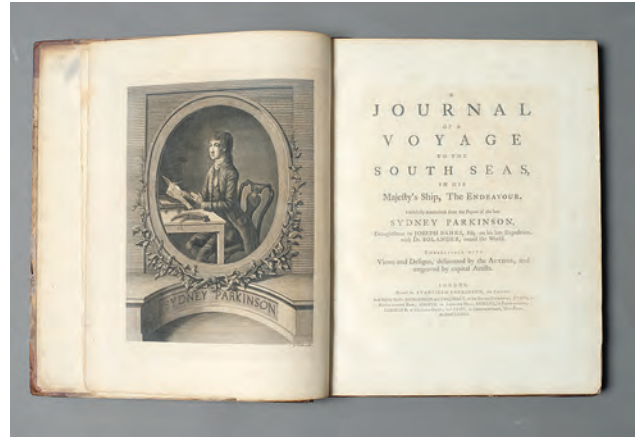
93 Sydney Parkinson

A Journal of a Voyage to the South Seas, in His Majesty's Ship, The Endeavour

Faithfully transcribed from the Papers of the late Sydney Parkinson, Esq on his late Expedition with Dr Solander, round the World.
London: Printed for Stanfield Parkinson, the editor 1773. xxiii, 212p, [2]p errata & directions to the binder. Engraved frontispiece and 27 engraved plates including map of New Zealand. Large paper copy, 344mm x 275mm. Bound in later half leather [not recent] with gilt titles, original papered boards and endpapers, with the name Captain

Sharpe 1834 on front endpaper. Contents, text mainly clean some offsetting from the plates. VG copy of a rare and important account.

As botanical artist for the Endeavor voyage, Parkinson produced many magnificent botanical and natural history drawings of Tahiti, New Zealand, and Australia. His untimely death near the end of the voyage resulted in a dispute between his brother Stanfield and Banks over ownership of his manuscripts and drawings. When Hawkesworth learned of the impending publication of this work, he sought and received an injunction to prevent its appearance until sometime after the official account was issued. Hawkesworth went so far as to omit mention of Parkinson's name from the official account, and even failed to give him credit for his botanical illustrations...
Provenance: Estate of John Lawford.
\$8000 – \$10 000



94 Edward Jerningham Wakefield
Illustrations to *Adventure in New Zealand* Lithographed from original Drawings taken on the spot by Mrs Wickstead, Miss King, Mrs Fox, Mr John Saxton, Mr

Charles Heaphy, Mr S Brees & Captain W Mein Smith.
London: Smith Elder and Co 1845, first edition, one of the rare hand-coloured copies. Pagination: 2 l., title page with

hand coloured vignette and description of plates, coloured lithographs on 15 l., [including 5 fldg panoramas], 360mm. Marginal finger marks, spotting, and browning mainly on the fldg panoramas,

plates mainly clean. Rebound in later half green leather with pale green cloth boards. Bagnall 5820
Provenance: Estate of John Lawford.
\$15 000 – \$20 000

Auction continues online:
live.artandobject.co.nz

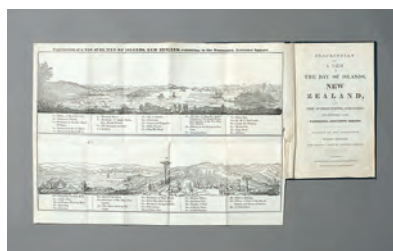
The following items will be
sold online via our bidding app.
Online auction bidding closes
on Tuesday 5 December from
5:00pm.

REGIONAL HISTORY

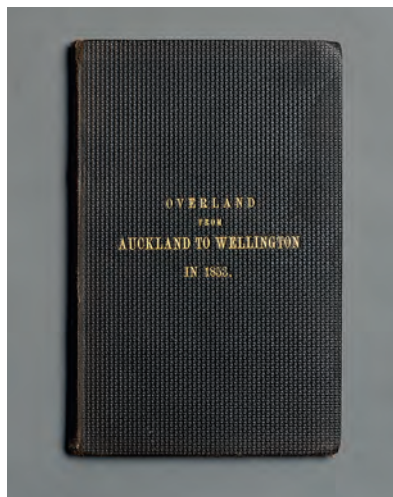
- 95 Auckland Exhibition
Industrial and Mining Exhibition Official
Handbook and Catalogue
Auckland: Geddis and Blomfield 1898. 200p.
[7] l., of adverts, illustrated throughout.
220mm, bound in a contemporary half
vellum with marbled boards and title label.
VG.
Provenance: Estate of Peter Stratford with
his bookplate.
\$150 – \$200



- 96 Broadsheet – Wellington [1845]
Fancy Dress Ball, under the direction of
stewards, Tuesday, March 4, 1845
A Fancy Dress Ball will Take Place on the
above evening, in the Britannia Saloon,
Aurora Tavern Dancing to commence at 8
o'clock. 345 x 300mm. Rare.
Roland Davis sailed to NZ on the Aurora
arriving in 1840, he soon became a leading
figure in the organization of working class
interests in early Wellington. He kept the
Aurora Tavern in Willis Street, which opened
in 1844 and in 1845 and built the town's first
theatre the Britannia Saloon adjacent to it.
Provenance: Estate of John Lawford.
\$400 – \$600
- 97 Wellington Journals [First 3 Issues]
The Journal of the Early Settlers and
Historical Association of Wellington
Vol.1. No.1. December 1912. 42p; Vol.1. No.2.
May 1913. 43 – 90p; Vol.1. No.3. 91-154p. All
with numerous illustrations and portraits, a
light owners stamp of Stewart McKenzie on
the front covers. 215mm, all in original paper
covers, a few spine chips else clean and VG.
Much on the early history of Wellington.
Rare.
Provenance: Estate of Peter Stratford
\$250 – \$350



- 98 Robert Burford
Description of a view of the Bay of Islands,
New Zealand
and the surrounding country, now exhibiting
at the Panorama, Leicester Square / painted
by the proprietor, Robert Burford, from
drawings taken by Augustus Earle.
London: G. Nichols, ca 1838. 12 p., 1 folded
leaf of ill.; 22 cm. 210mm, bound in dark blue
textured cloth with gilt NEW ZEALAND
across front board.
The text describes the 44 localities in
the Bay, numbered and identified in the
accompanying crude engraving. Bagnall 771.
Provenance: Estate of John Lawford.
\$1000 – \$1500



- 99 Lieutenant F.W. Mackenzie
Overland from Auckland to Wellington in
1853
Being Notes of Travel. Dunedin: H. Wilkie &
Co 1893. [4]p, 82p, 170mm, original brown
textured cloth with gilt title front board, near
fine copy. Scarce.
\$400 – \$600



- 100 A.P.W Thomas
Report on the Eruption of Tarawera and
Rotomahana, N.Z.
Wellington: Govt Ptr 1888. 74p, frontis, 2
folding maps and 13 plates. Some browning
mostly front and back pages, bound with
the original blue paper covers into half tan
leather with marbled boards. Leather title
label with gilt along spine. An attractive copy.
Provenance: Estate of John Lawford.
\$300 – \$400

- 101 Henry Selfe Selfe / John Marshman [Agents]
Canterbury, New Zealand in 1864
Published with the approval of the Provincial
Government. London: G. Street [1864]. vi,
ivp, 63p, vii-xii [includes covers] errata tipped
in at p1, frontis fldg map of Canterbury with
inset map of the Colony of New Zealand.
A reprint of the 1862 edition 'this edition is
exhausted', this a reprint with corrections
made from observations during a visit to the
colony. 180mm original yellow paper covers.
VG good copy. Rare.
\$300 – \$400

NEW ZEALAND HISTORY

- 102 Lady Barker [5 Titles]
Station Life in New Zealand
London: Macmillan and Co 1870. Station Life in
New Zealand
238p, publishers' adverts, colour frontis.
Ex Library copy with stamps, browning and
finger marks. 195mm rebound in qtr leather
with marbled boards. 2. E.W. Payton – Round
About New Zealand. London: Chapman &
Hall 1888. x, [1] l., 368p, frontis, fldg map and
illustrations. 210mm original blue pictorial
boards, light edge wear. 3. B.A. Heywood –
A Vacation Tour at the Antipodes. London:
Longman Green etc 1863. viii, 251p,
frontis, fldg map plates. 205mm, original
binding worn and stained. 4. R.J. Barton
[compiler] – Earliest New Zealand. Journals
and Correspondence of Rev John Butler.
Masterton 1927. [viii] l., 440p, [x] l., of index
at end. Browning & light marks original cloth,
spine faded. 5. Miss Tucker – The Southern
Cross and Southern Crown, or The Gospel
in New Zealand. London: James Nisbet
1855. 263p, frontis, illustrations and fldg
map. Front endpaper torn with loss, 185mm,
original cloth binding, worn spine ends.
Provenance: Estate of John Lawford.
\$100 – \$150
- 103 James Busby
Our Colonial Empire and the Case of New
Zealand
Williams and Norgate [1866]. By James
Busby Her Majesty's Resident at New
Zealand from 1832-1840, and a Settler there
since that Period. 194p, bound with original
front paper cover into card covers. Bagnall
827
Provenance: Estate of John Lawford.
\$150 – \$200
- 104 William Cottrell
Furniture of the New Zealand Colonial Era;
An Illustrated History 1830-1900
Auckland: Reed 2006. 591p, profusely
illustrated. 325mm blue boards with gilt titles
and in DJ, near fine copy.
Provenance: Estate of John Lawford.
\$80 – \$120
- 105 George L. Craik
The New Zealanders
London: Charles Knight 1830. The Library of
Entertaining Knowledge. iv, 424p,
frontis [map of NZ], illustrations. 165mm,
contemporary half leather binding, title label,
nick at head of spine, marbled endpapers,
book plate [V with coronet]. VG.
Provenance: Estate of John Lawford.
\$100 – \$200



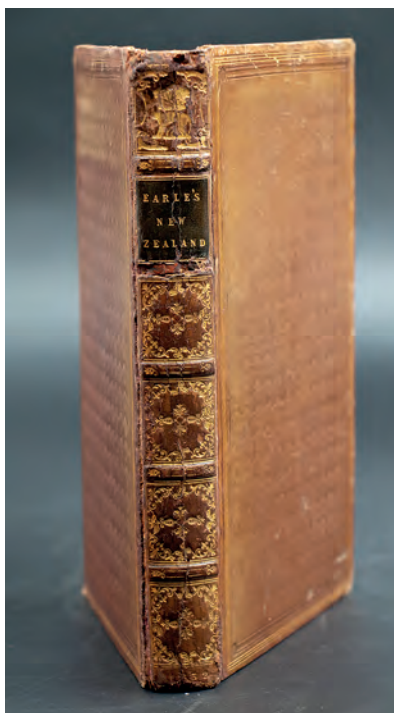
- 106 Richard A. Cruise
Journal of a Ten Months' Residence in New Zealand
London: Longman, Hurst, Rees, Orme etc 1824, second edition. vi, 327p, frontis [portrait].
Rebound [not recent] finely, in half brown leather, title labels and decorative gilt to spine, tan cloth boards. Very attractive copy.
Provenance: Estate of John Lawford.
\$600 – \$800

- 107 Richard A. Cruise
Journal of a Ten Months' Residence in New Zealand
London: Longman Hurst Rees, Orme etc 1824, second edition. vi, 327p, frontis [portrait].
Rebound [not recent] finely, in half maroon leather, title labels and decorative gilt to spine, maroon cloth boards. Very good copy.
Provenance: Estate of John Lawford.
\$500 – \$700



- 108 Ernest Deiffenbach
Travels in New Zealand
With contributions to the Geography, Geology, Botany and Natural History of that Country.
London: John Murray 1843, in two volumes. Vol.1. vii, 431p, frontis and 2 plates. Vol. 2. iv, 396p, publisher's adverts entered at end. Original blind stamped green boards, margins and spines faded. Text mainly clean, some offsetting from plates, contemporary owner's signature on title pages. A VG set.
Provenance: Estate of John Lawford.
\$600 – \$800

- 109 Ernest Deiffenbach
Travels in New Zealand
With contributions to the Geography, Geology, Botany and Natural History of that Country.
London: John Murray, 1843, in two volumes. Vol. 1. vii, 431p, frontis and 2 plates. Vol. 2. iv, 396p, publisher's adverts entered at end. Original blind stamped green boards [some stains], rebacked with green cloth, original spine strips laid on, new endpapers, some browning and marks throughout, contemporary owner's signature on title pages. A complete tidy set.
Provenance: Estate of John Lawford.
\$300 – \$400

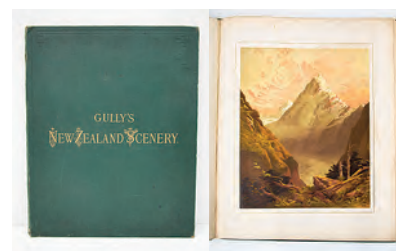


- 110 Augustus Earle [Association Copy]
A Narrative of a Nine Months' Residence in New Zealand, in 1827;
together with a journal of residence in Tristan D'Acunha. London: Longman, Rees, Orme etc 1832.
x p, 371p, frontis [portrait], 6 plates. Some foxing mostly on endpapers. 220mm bound in contemporary full leather with a basket weave pattern to the boards, spine with decorative gilt and titles.
Provenance: With the book plates of Carton Library, Duke of Leinster and Peter Bromley Maling.
Provenance: Estate of John Lawford.
\$800 – \$1000

- 111 Augustus Earle
A Narrative of a Nine Months' Residence in New Zealand in 1827;
together with A Journal of a Residence in Tristan D' Acunha ... London: Longman, Rees, Orme etc 1832. x, 371p, frontis, 6 plates [2 fldg], text mainly clean, browning to endpapers and plates. 225mm, bound in contemporary half leather, title label with maroon cloth boards.
Provenance: Estate of John Lawford.
\$600 – \$800



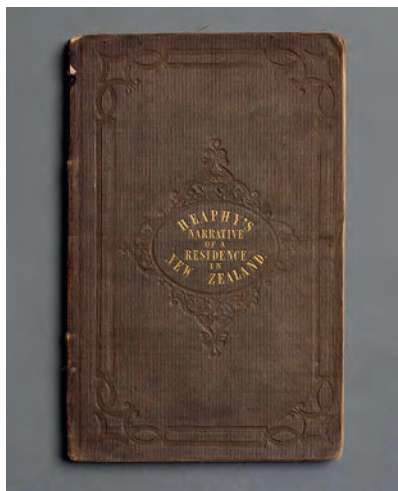
- 112 F.W. Furkert [2 Titles]
Early New Zealand Engineers
Wellington 1953, first edition. 306p, illustrations and diagrams. Name on endpaper. 222mm, maroon cloth with black titles, DJ.
2. John Holland Baker – A Surveyor in New Zealand 1857-1896. Edited by Noeline Baker. Auckland etc: W & T 1932. 336p, 220mm dark blue cloth, gilt title, DJ with edge chips.
Provenance: Estate of John Lawford.
\$100 – \$150



- 113 John Gully
New Zealand Scenery
Chromolithographed after Original Water-Colour Paintings. With Descriptive Letter Press by Dr. Julius Von Haast. Dunedin: Henry Wise and Company 1877. 3 p.l., 15 colour plates each with leaf of descriptive text. Some offsetting from the plates and a narrow light watermark on margin of 3 plates, finger marks. Folio, 540mm, original green cloth gilt cover title.
Provenance: Estate of John Lawford.
\$400 – \$600

- 114 Charles Hursthouse
New Zealand. The "Britain of the South". With a chapter on the Native War and our Future Native Policy.
London: Edward Stanford 1861, 2nd edition. Frontis, [Stanford's map of New Zealand] xv, 519p, large fldg map at end [short tear], lacking front free endpaper else a VG copy in original blue blind stamped cloth with gilt titles.
Provenance: Estate of John Lawford.
\$200 – \$250

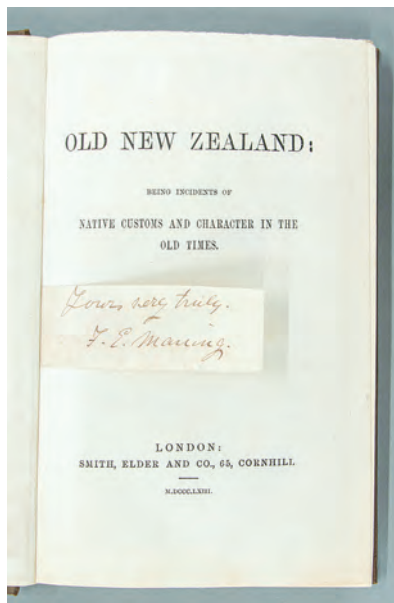
- 115 Thomson W. Leys [Editor]
Early History of New Zealand. Brett's Historical Series.
Auckland: H. Brett 1890. [4] l., 728p. xliii, colour frontis, illustrations, sprinkle of foxing throughout, heavy on title page. 285mm, original half leather binding, with decorative gilt and titles to spine, illustrated red cloth boards, edge wear.
Provenance: Estate of John Lawford.
\$100 – \$150



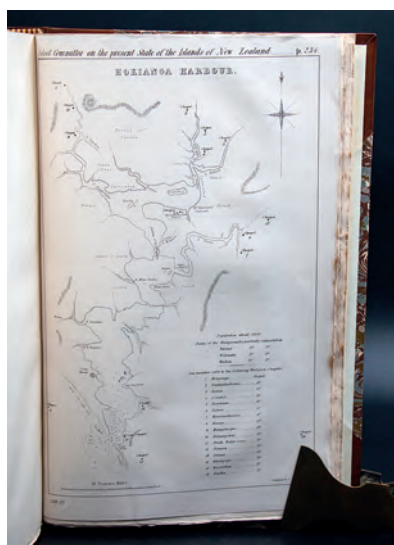
- 116 Charles Heaphy
Narrative of a Residence in Various Parts of New Zealand
Together with a Description of the Present State of the Company's Settlements.
London: Smith Elder and Co 1842, first edition. viii, 142p, [6]p, of adverts. 190mm, bound in blind stamped limp brown cloth with gilt titles front cover, wear at spine ends and hinges, a few marks G+ copy. Uncommon.
Heaphy came to Port Nicholson on the *Tory* in 1839 as a young New Zealand Company surveyor and artist. This account published after his brief return to England at the end of 1841. Bagnall 2549
\$600 – \$1000

- 117 F.E. Maning
Old New Zealand; A Tale of the Good Old Times by a Pakeha Maori.
Auckland: Robert J. Creighton 1863. xiv, 329p, owner's name on title page and some browning. 210mm, bound in original maroon half leather with marbled boards. VG
Provenance: Estate of John Lawford.
\$150 – \$200

- 118 John Liddiard Nicholas
Narrative of a Voyage to New Zealand Performed in the Years 1814 and 1815, in Company with the Rev. Samuel Marsden. In Two Volumes. Ln: James Black and Son 1817. 1st ed. Vol. I. xix, 431p, frontis, 1 fldg plate 1 fldg map. Vol. II. xii, 397p, frontis, 1 plate, map of Bay of Islands, contents generally clean, some light browning. Old light rubber stamps for Devon and Exeter Institution on verso of frontis both volumes and verso of the fldg plate in Vol. I. 235mm bound in contemporary HC bindings, marbled boards both volumes have been rebacked, original spine strips laid on, new free endpapers and cloth hinges. Tidy set.
Nicholas a New South Wales settler of two years standing, accompanied Marsden on his historic mission to the Bay of Islands in Dec 1814 and was his close companion for the duration of their stay to the end of Feb 1815. Bagnall 4268.
Provenance: Estate of John Lawford.
\$600 – \$800



- 119 F.E. Maning [Association Copy]
Old New Zealand. Being Incidents of Native Customs and Character in the Old Times.
London: Smith Elder and Co 1863. Tipped into title page a slip of paper with 'Yours Truly. F.E. Maning. vii, 216p, 205mm, a little light browning and spine very lightly faded, some pages unopened. A VG near fine copy. Provenance: Estate of John Lawford.
\$200 – \$250



- 120 House of Commons Report 1838
Report: The Present State of the Islands of New Zealand
from the Select Committee of the House of Lords, appointed to Inquire into The Present State of the Islands of New Zealand and the Expediency of Regulating the Settlement of British Subjects therein... iii, 376p, map of the Hokianga Harbour. 355mm bound in modern half leather, marbled boards [abraded], with the original blue paper covers.
Hocken "This report is a highly interesting and valuable one, full of information relative to the natives, the missionaries, trade and production from the year 1815 to 1838". Much on Bay of islands & Whaling".
Provenance: Estate of John Lawford.
\$600 – \$800



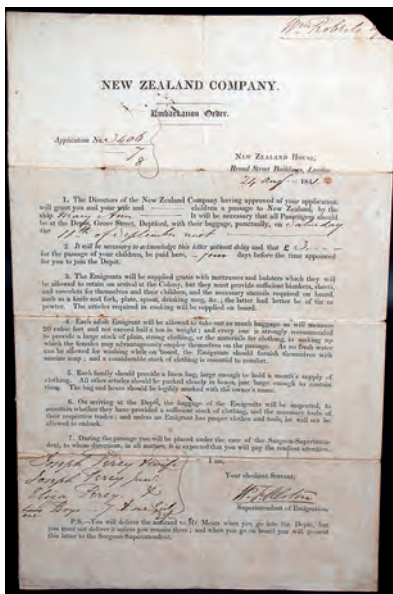
- 121 John Liddiard Nicholas
Narrative of a Voyage to New Zealand, performed in the years 1814 and 1815, in Company with the Rev. Samuel Marsden, Principal Chaplain of New South Wales.
London: James Black and Son 1817, in two volumes. Volume 1. xx, 431p, frontis, fldg map and fldg plate. Volume 2. xii, 397p, errata and directions to binder, frontis, map and one plate. Rebacked in style [not recent] and in the original full calf boards, title label and gilt rules, marbled endpapers, and edges. Sprinkle of light foxing & browning, mainly endpapers. A very nice set.
Provenance: Estate of John Lawford.
\$800 – \$1000
- 122 R.A. Oliver
Sketches in New Zealand.
A Series of Lithographic Drawings from Sketches in New Zealand. Martinborough: Alister Taylor 1977. No 185 of a limited edition of 500 copies. Facsimile edition of the original edition [ca 1852]. With the original cardboard folder.
Provenance: Estate of John Lawford.
\$200 – \$300
- 123 Somerset Playne
New Zealand [Ao-Tea-Roa] Its History, Commerce, and Industrial Resources
London: The Foreign, and Colonial Compiling and Publishing Co 1912-1913. 699p, illustrated throughout and detailed descriptions of pastoral runs arranged regionally. Chapters on climate, flora and fauna, industry, forestry etc. Marbled endpapers, 315mm bound in a deluxe binding of full maroon leather with gilt titles to spine and gilt map of New Zealand front board. VG.
Provenance: Estate of John Lawford.
\$200 – \$400
- 124 John Savage
Some Account of New Zealand; particularly the Bay of Islands, and surrounding country; With a description of the religion and government ... London: J. Murray 1807. viii, 110p, front [portrait of Tiarrah], 2 plates [one hand coloured], [1] l., of errata and directions to the binder.
The book has had some professional restoration, re-cased in the original full leather boards with the majority of the original spine strip laid on and corners neatly reinforced. New endpapers, and the title page has been laid onto leaf of paper [? original endpaper]. Very neatly and professionally done, contents complete and clean, some browning to New Zealand deity plate, as usual. A nice copy of a rare book, the first account devoted entirely to New Zealand.
\$2000 – \$2500

- 125 Rev William Yate [3 Titles]
An Account of New Zealand,
and of the formation and progress of the
Church Missionary Society's Mission in the
Northern Island.
London: Seeley & Burnside 1835, 2nd
edition. [viii], 310p, [10]p index at end,
complete with plates and map. Browning
mostly on tissue guards and plates. 210mm,
original dark green textured cloth, cloth split
along back hinge. Worn copy.
2. F.E. Maning – Old New Zealand. Being
incidents of Native Customs and Character
in the Old Times. London: Smith Elder and
Co 1863. viii, 216p, 205mm, original brown
blind stamped tan cloth binding, wear at
spine ends.
3. Thomas Bracken – Lays of the Land of the
Maori and Moa. London: Sampson Low etc
1884, 160p, frontis [portrait], 172mm original
tan pictorial cloth, gilt titles, VG.
Provenance: Estate of John Lawford.
\$100 – \$200

- 126 Rose Young with Heather Curnow and
Michael King
G. F. von Tempsky: Artist and Adventurer
Alister Taylor 1981, no. 338 of 1250
numbered copies. Illustrated throughout and
with 42 tipped on plates, 377mm bound in
decorative quarter leather, and in solander
box with laid on portrait and silver titles. A
fine copy.
Provenance: Estate of John Lawford.
\$200 – \$300

NEW ZEALAND COMPANY

- 127 Adjustments of Land Questions 1848
Arrangements for the Adjustment of
Questions relating to the Land in the
settlements of the New Zealand Company.
London: Stewart and Murray, Old Bailey
1848. 1 p.l., 75p, [1]p. Brown paper with
short cover title. Contemporary name front
endpaper. Some light foxing and toning to
covers, a VG copy.
Bound book of correspondence and articles
relating to early land settlement in New
Zealand. Rare.
Provenance: Estate of Peter Stratford.
\$300 – \$500
- 128 Dandeson Coates [2 Pamphlets]
New Zealand Company
The Principles, Objects, and Plan of the New
Zealand Association examined,
in a Letter to the Right Hon. Lord Glenelg.
London: Hatchards 1837. Cover title, with
Rev'd R Taylors name on front cover. 44p,
sewing loose and damp damage to last
pages of pamphlet with loss to first 3 lines of
back cover else complete. 225mm.
2. Coates, Dandeson – The New Zealanders
and Their Lands. The Report of the select
Committee of House of Commons in a
Letter to Lord Stanley by Dandeson Coates.
London: Hatchards 1845, 3rd edition. Cover-
title, stitched, 72p, 197mm, VG.
Provenance: Estate of Peter Stratford.
\$100 – \$300



- 129 New Zealand Company [1841]
Embarkation Order – Application No
3406-78,
London: New Zealand House dated 24
Aug 1841 to Wm Roberts Esq, approval of
application.
‘The Directors of the New Zealand Company
having approved of your application ... will
grant your wife and children a passage to
New Zealand on the ship Mary Ann ...all
passengers to be at Deptford with their
baggage on Saturday 11th of September
next. The 3 pounds for the passage of your
children must be paid four days before the
appointed time...’
It lists the series of regulations regarding
bedding, food, utensils, marine soap etc.
Handwritten family details of Joseph and
Eliza Percy and children and with the
signature of H Fullerton, Superintendent of
Emigration.
Single folio leaf Embarkation Order on
obverse and on reverse side the dietary
details and other items required for the
journey.
Provenance; Estate of John Lawford.
\$400 – \$600

- 130 New Zealand Company [2 Pamphlets]
1. KAPPA [John Ward] -New Zealand.
Nelson, the Latest Settlement of the New
Zealand Company. London Smith Elder and
Co 1842. Cover title, stitched, 4p, 41p, [4]pp
of adverts. VG.
2. Theophilus Heale – New Zealand and
the New Zealand Company: Being a
Consideration of How Far Their Interests
Are Similar. In Answer to a Pamphlet
Entitled How to Colonize: The Interest of
the Country, and the Duty of Government.
London: Sherwood, Gilbert & Piper 1842.
Cover titles 63pp, Epsom trust book plate
back cover, some light discolouration, VG.
Provenance: Estate of Peter Stratford.
\$150 – \$200

EXPLORATION & PACIFIC –
BOOKS, PAINTINGS & PRINTS

- 131 Alex Armstrong
A Personal Narrative of the Discovery of the
North-West Passage;
with numerous Incidents of Travel and
Adventure during nearly five years'
continuous service in the Arctic Regions
while in search of the Expedition under Sir
John Franklin.
London: Hurst and Blackett, 1857. xxii, [1 l.,]
616p, tinted lithographed frontis and hand
coloured folding map [complete, lightly
foxed]. 230mm, paper spl along inside
hinges, original blue pebble cloth worn, with
piece missing from head of spine and lacking
spine caps, contents generally clean sprinkle
of light spasmodic foxing. Old owner's stamp
on title page [W.R. Garthorne, Hull].
The first edition, written by the surgeon
and naturalist on Robert McClure's Franklin
search expedition aboard the HMS
Investigator.
\$800 – \$1200



- 132 George Baxter
The Reception of the Rev. J. Williams at
Tanna in the South Seas, the day before he
was massacred. (with) The Massacre of the
Lamented Missionary, the Rev. J. Williams,
and Mr. Harris.
Pair of oil coloured 'Baxter' prints, 210 x
320 mm each, in contemporary carved gilt
frames.
Provenance: Estate of John Lawford.
\$600 – \$800
- 133 Andrew David [Editor] [3 Volumes]
The Charts and Coastal Views of Captain
Cook's Voyages
Vol. 1. The Voyage of the Endeavour, 1768-
1771. Vol. 2. The Voyage of the Resolution
and Adventure, 1772-1775. Vol. 3. The Voyage
of the Resolution and Discovery, 1776-1780.
London: Hakluyt Society in association with
The Australian Academy of Humanities
1988 – 1997.
Elephant Folio [445mm], lxiv, 328; c, 332; vi,
319pp; 1 folding map, colour frontis in each
volume, profusely illustrated. Original navy
buckram with gilt vignettes on front boards,
gilt spine titles, in original dustjackets with
black lettering. A fine set, unread and in the
original packaging.
Provenance: Estate of Peter Stratford.
\$600 – \$700

- 134 J.C. Beaglehole [5 Books, 3 Booklets]
The Journals of Captain James Cook with the folio of Charts & Views
4 volumes. Hakluyt Society 1955 – 1967. Vol. I. The Voyage of the Endeavour 1768 – 1771. Volume II. The Voyage of the Resolution and Adventure 1772-1775. Volume III in two text volumes Part one and Part two. The Voyage of the Resolution and Discovery 1776-1780; All complete. Part one of Vol III has a few spots of foxing on title page, all bound in dark blue publisher's cloth with gilt titles and portraits of Captain Cook on front boards, all in DJs, toning to spines. With the folio of Charts and Views. Sydney: Hakluyt Society 1955, a few spots, and light toning to paper slipcover.
One volume -The Life of Captain James Cook. Hakluyt Society 1974. Complete fine copy in very good DJ spine with light fading. With three Hakluyt Society Booklets – Addenda and Corrigenda to Volume 1 & 2 [1968 & 1969]; Cook and the Russians [1973].
Provenance: Estate of Peter Stratford, with his book plates in each volume.
\$600 – \$800
- 135 W.B. Churchward [6 Titles]
Blackbirding in the South Pacific: Or the First White Man on the Beach
London: Swan Sonnenschien & Co 1888. [2] p.l., 255p, illustrations. 220mm, original blue pictorial cloth with gilt. Lacking front free endpaper, wear at edges. 2. James Chalmers – Pioneering in New Guinea. London: Religious Tract Society 1887. x, illustrations and fldg map. Blue pictorial cloth binding 230mm, worn. 3. David & Charles Livingstone – Narrative of an Expedition to the Zambesi and its Tributaries... London John Murray 1865, first edition. [?]complete not collated. Worn copy in original binding with gilt illustration. 4. Gill, Rev W.W – Savage Life in Polynesia. Well: Govt Ptr 1880. viii, 232p, 21.5cms, bound in green decorative publishers' cloth with gilt titles. Foxing and signature on half title, else VG. 5. Williams, Thomas – Fiji and the Fijians. London 1858. Vol.1. The Islands and their Inhabitants. lacking map; Vol.2 James Calvert – Mission History. Both illustrated [some in colour], original bindings, showing wear. 6. John Martin – An Account of the Natives of the Tonga Islands, in the South Sea Ocean. London 1817. Volume II only. Light foxing and browning at margins. Original printer's boards, worn at edges.
Provenance: Estate of John Lawford.
\$150 – \$300
- 136 H.B. Guppy
The Solomon Islands; Their Geology, General Features, and Suitability for Colonisation
London: Swan Sonnenschien... 1887. xii, 152p, 3 colour maps, 2 geological plates. 255mm, bound in original blue cloth, gilt titles, some mottling. VG.
Provenance: Estate of John Lawford.
\$80 – \$150
- 137 John Harris
The History of Prince Lee Boo. A Native of the Pelew Islands.
London: Ptd for John Harris 1827. 144p, frontis, [hand coloured], 150mm, bound in later half leather with marbled boards, title labels to spine and gilt rules. VG.
Provenance: Estate of Peter Stratford.
\$100 – \$200



- 138 Captain James Cook
The Journal of H.M.S. Resolution 1772-1775
Genesis Publications/Hedley Fine Art Books 1981, No 327 of 500 copies. Preface by Earl Mountbatten, 806p, illustrated, colour frontis and plates. Folio, half red leather bound with red buckram boards, gilt titles, raised bands & gilt decoration, gilt ship to front board, all edges gilt, marbled endpapers, in slipcase, light foxing to title on slipcase, a fine copy.
Provenance: Estate of Peter Stratford.
\$300 – \$400



- 139 Lieutenant James Cook
The Journal of H.M.S. Endeavour 1768-1771
Genesis Publications In association with Rigby Ltd 1977, No 327 of 500 copies. Preface by Earl Mountbatten, 527p, illustrated, colour & black and white plates, map and fldg facsimile.
Folio, half tan leather bound with green buckram boards, gilt titles, raised bands & gilt decoration, gilt ship to front board, all edges gilt, marbled endpapers, in slipcase, light toning to title on slipcase else a fine copy.
Provenance: Estate of Peter Stratford with his bookplate.
\$600 – \$700

- 140 Lewis de Bougainville
A Voyage Round the World
Performed by Order of His Most Christian Majesty, In the Years 1766, 1767, 1768, and 1769.
In the Frigate La Boudeufe and the Store-Ship L'Etoile. Translated from the French by John Reinhold Forster. London: J. Nourse and T. Davies 1772. xxviii, 476p, 3 [of 5] fldg charts and 1 fldg plate. Contents clean and VG. Bound in 19th century half leather, marbled boards, title label to spine, edge wear and leather at front hinge cracking, cords are holding.
Provenance: Estate of John Lawford.
\$1000 – \$1200
- 141 Paul Deacon
HMS Resolution
watercolour and pen
signed and inscribed
370 x 170 mm, mounted and framed
Provenance: Estate of John Lawford.
\$100 – \$200
- 142 Amasa Delano
A Narrative of Voyages and Travels in the Northern and Southern Hemispheres
Comprising Three Voyages Round the World; Together with a Voyage of Survey and Discovery in the Pacific Ocean and Oriental Islands.
Boston: E.G. House 1817. 598p, lacking frontis, free endpapers and part of the chart of Pitcairn Island. Text with foxing and scattered soiling, age toning, 225mm bound in old calf with title label, back hinge weak but holding. Housed in a custom-made clamshell box title label 'Delano's Voyages' to spine.
Provenance: Estate of John Lawford.
\$300 – \$500



- 143 Rudiger Joppien & Bernard Smith
The Art of Captain Cook's Voyages
Vol. I. The Voyage of the Endeavour 1768-1771; Vol. II. The Voyage of Resolution & Endeavour 1772-1775; Vol. III (text) & Vol. III (catalogue): The Voyage of Resolution & Discovery 1776-1780.
Published by Oxford University Press in association with the Australian Academy of the Humanities, Oxford and Melbourne, 1985 [vol.1. & 2, 1st ed reprints] & 1987 [vol 3 & 4, 1st editions.]
Four folio volumes, illustrated throughout, a complete and fine unread set still in original packaging.
An authoritative account encompassing the work of both the professional and amateur artists on Cook's voyages.
Provenance: Estate of Peter Stratford, with his bookplate in each volume.
\$400 – \$600

MILITARY

- 144 East India Company
East India Company Pattern: Flint Lock Blunderbuss Musket with ram rod, manufactured for the African, South Seas trade, in original relic condition, circa 1810. 800mm overall length. Two musket balls [each with Y numbers]. (3)
Provenance: Estate of John Lawford.
\$100 – \$200
- 145 Japanese World War II Flags [2x]
1. 'Good Luck Flag' known as 'Yosegaki Hinomaru'. These were presented to members of the armed forces on their enlistment and carried by them on active service. The flag shows the soldier's name and the signatures of relatives, friends and neighbours. The text is written in vertical formation radiating out from a Central Red circle. silk, signs of time wear. 640 x 740 mm.
2. An unidentified Japanese World War II Flag showing a Central Red circle and to the right a Geisha figure waving a Union Jack, signed in Japanese script lower right, silk, small tear otherwise in good condition considering age. 660 x 900 mm (2)
Provenance: Estate of John Lawford.
\$300 – \$500
- 146 J. Martin Bladen Neill [Association Copy]
Recollections of Four Years' Service in the East with H M Fortieth Regiment
Comprising an Account of the Taking of Kurachee in Lower Scinde, in 1839; Operations in upper Scinde in 1840 and 1841; and the operations of the Candahar Division of "The Avenging Army of Afghanistan" in 1841 and 1842...
London: Richard Bentley 1845. xvi, 364p, frontis [port]. 220 mm. Bound in half green leather with green pebble cloth boards, title label to spine and decorative gilt. Very attractive copy.
With the name of R. A. Trotter 43rd Inf on title page and with a few small contemporary corrections to the text in his hand.
Lieutenant Colonel R.A. Trotter was born in Calcutta 13th February 1814, and educated at Edinburgh Academy, 1824-30. Posted to the 56th and 27th regiments of Native Infantry before transferring to the 43rd N.I. on 28th January 1834. He served with the regiment throughout the Afghan War.
Provenance: Estate of Peter Stratford.
\$600 – \$800
- 147 Proclamation – German Samoa 1914 [2x]
Two Copies in English and Samoan
With the Royal coat of arms of the United Kingdom. Numbered paragraphs. A proclamation announcing the occupation of German Samoa by the New Zealand government. The rules of the occupation follow... read out by Robert Logan. Colonel, Commanding the Occupying Force on August 29, 1914.
Laid side by side on cardboard, a poor copy of a rare ephemeral proclamation. Small abrasions [?] silver fish to the surface affecting small portions of the text.]
Provenance: Estate of John Lawford.
\$200 – \$400



- 148 New Zealand Wars Medal 1861–1866
Impressed name & number – 1668. John Sivins, 2nd Bn. 14th Regt.
Known informally as 'The Old and Bold', the 14th [Buckinghamshire] regiment of foot operated 1809-1876. The 14th was based in Ireland when in 1860 the second battalion travelled to Auckland to fight in the New Zealand Wars.
Provenance: Estate of John Lawford.
\$800 – \$1200
- 149 Sir Keith Park [Association Copies]
1. A Selection of Lectures and Essays from the Work of Officers Attending the First Course at the Royal Air Force Staff College 1922-1923. For Official Use Only. Air Ministry December 1923. 173p, signature of K.R. Park and with his personal pencil notations.
2. Another copy dated 1924. 117p, unsigned but notated in pencil with 4 fldg charts.
3. The Kings Regulations and Air Council Instructions for the Royal Air Force, London HMSO 1944. A thick volume, pagination varies.
All with paper covered boards and cover titles
4. The Air Force List. October 1939. For Official Use Only. London HMSO [1939]. 'Sir Keith Park's' copy pencilled inside front cover. Pagination varies, appears to be complete. Original paper covers.
All from the library of Sir Keith R. Park.
Provenance: Estate of John Lawford.
\$600 – \$1000
- 150 Keith R. Park [Association Books]
1. John G. Winant – A Letter from Grosvenor Square. London H & S 1947, Inscribed on endpaper 'To Dorothy Park as a reminder of the days she served in the R.A.F as a cipher officer in the Battle of Britain from K.R.P. 13th Dec 1947'.
2. Ronald W. Clark – Battle for Britain. London: Harrap 1965, DJ. With Keith R. Park signature on endpaper.
3. Guy Gibson – Enemy Coast Ahead. London: Michael Joseph 1946. Worn at edges.
Provenance: Estate of John Lawford.
\$200 – \$300

- 151 World War Two
Photograph albums
Four Albums with numerous snap shots [60x 90mm] Images feature the journey of the ships carrying the first echelon of troops from New Zealand to Egypt. Life in camps, sightseeing etc. Includes Lebanon, Palestine, Jerusalem, to America, Europe and Britain. A large album with numerous images of a tour to America, Europe and Britain includes photographs, numerous colourful luggage labels laid to back covers, menus & ephemera.
Provenance: Estate of John Lawford.
\$200 – \$400

HISTORIC DOCUMENTS

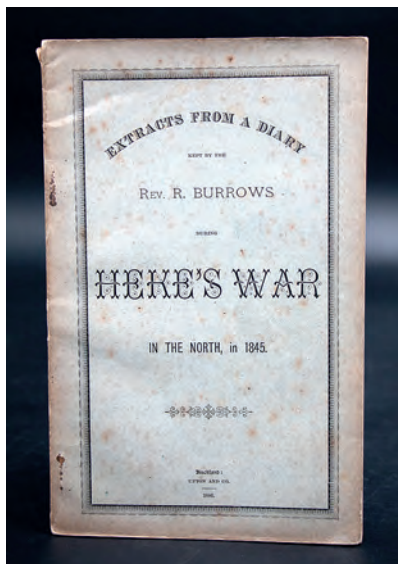
- 152 Auckland
Supreme Court – Bond
Dated 11th March 1854. Messrs Brown & Campbell to The Registrar of the Supreme Court. Bond. Whitaker, Auckland.
Issued to William Brown and J. Logan Campbell by the Supreme Court regarding monies left by William Mackenzie who died intestate. Signed by J. Logan Campbell and William Brown each with their personal wax seal and witnessed by Frederick Whitaker, Auckland.
Rare document with the signatures and original wax seals of J. Logan Campbell and William Brown.
Estate of Peter Stratford.
\$800 – \$1000
- 153 Land Grant [Signed George Grey]
Grant to Keremeneta Porikapa
Dated 20th August 1863. Te Awahou Manawatu. Entered in R. No.1. Fol.39. Signed Andrew Sinclair.
Ki nga Tangata Katoa e tae atu ai enei Whakaaturangi, e mihi atu ana...
At end – Ino hoki ra, a Sir George grey, te Kawana te Tumuaki i roto i runga hoki o te Motu o Niu Tirenī, i Akarana, i tenei te rua te kau o nga ra o Akuhata i te ona tekau ma whitu o nga tau o toku Kuinitanga, i te tau o te tatou Ariki, kotahi mano e waru rau eono te tkau ma. Signed with ink signature of G. Grey.
335 x 415mm, on blue Britannia watermarked paper, trifolded with Royal Crest at top. Small ink sketch of the grant No 10 of block viii Te Awahou Manawatu. on first fold.
Provenance: Neville Hogg Collection [Dargaville], Estate of John Lawford.
\$300 – \$500

MĀORI HISTORY

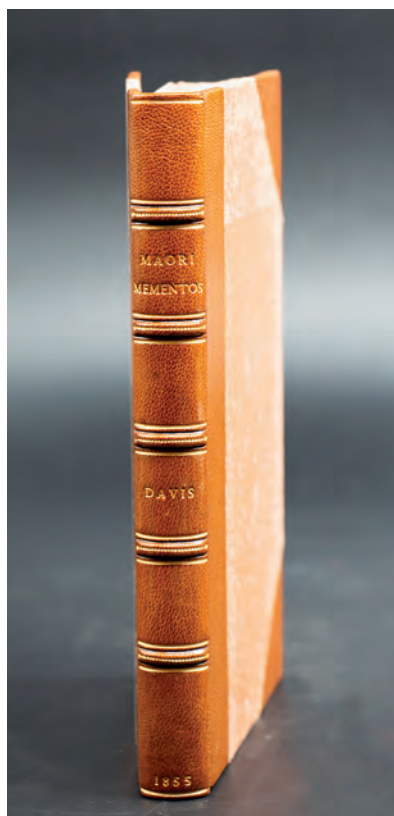


- 154 Johannes C. Andersen
Māori Music with its Polynesian Background
New Plymouth, Thomas Avery 1934, first edition. x, 483p, [1]p. illustrated. Pictorial endpapers, tape marks on back endpaper. 245mm, original red cloth with illustration laid on, VG copy. DJ enclosed in plastic cover, tape marks verso and on flaps.
\$100 – \$150

- 155 Gilbert Archey [2 Titles]
 Whaowhia Māori Art and Its Artists
 Collins, 1977, first edition. 136p, illustrations,
 plates, map. 300mm, DJ tape marks along
 margins.
 Provenance: Estate of John Lawford.
 2. Elsdon Best – The Māori as He Was
 – Wellington 1924. xv, 280p, illustrated.
 215mm, original green cloth with Māori
 warrior and gilt titles, cloth mottled else VG.
 Provenance: Estate of John Lawford.
 \$50 – \$100



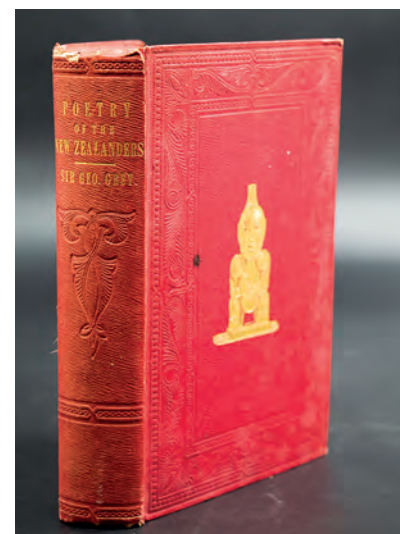
- 156 Rev. R. Burrows
 Heke's War in the North in 1845
 Extracts from a Diary. Auckland: Upton
 and Co 1886. 58p, sprinkle of light foxing.
 215mm, original paper covers. VG. Book
 plate of the Epsom Trust.
 Provenance: Library of Peter Stratford.
 \$120 – \$180
- 157 George Clarke Esq [2 Items]
 Pamphlet in answer to Mr. James Busby's
 on the Taranaki question and the Treaty of
 Waitangi by Sir William Martin.
 Auckland A.F. McDonnell, Free Press Printery
 1923. Heading 'Māori Land Question'. 11p,
 double column, 240mm, original paper
 covers, light foxing to covers, & some rust at
 staples else VG.
 Clarke correctly predicted that Crown
 efforts to wrest land from Māori would lead
 to tension and he argued for a land register
 so land would not be sold if its ownership
 was disputed.
 2. Sir Apirana Ngata – The Treaty of
 Waitangi. An Explanation; Te Tiriti O
 Waitangi. He Whakamarama. Published for
 The Māori Purposes Board, printed at the
 Pegasus Press [1950]. 31p, text in English
 and Te Reo. Soft covers, VG.
 Provenance: Estate of Peter Stratford.
 \$150 – \$300
- 158 H.G. Robley [2 Items]
 Head of a Māori man with moko
 Pencil drawing on tracing paper, 150 x
 100mm, initialled lower right hand corner
 GR.
 2. L.W. Melon – Robley – Soldier with a
 Pencil. Tauranga Historical Society 1957. 20p,
 illustrated. 210mm, orange soft covers, VG.
 Provenance: Library of Peter Stratford.
 \$100 – \$200



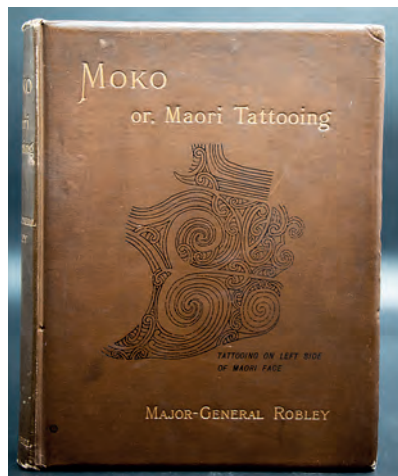
- 159 Charles Oliver B. Davis [Association Copy]
 Māori Mementos
 Being a series of Addresses, Presented by
 the Native People, To His Excellency Sir
 George Grey...
 Auckland: Williamson and Wilson 1855.
 Signed S. Percy Smith 1891. [2] l., iii p, 227p.
 A few spots, mainly clean, 215mm, rebound
 [not recent] finely, in half brown leather, gilt
 titles and rules to spine, tan cloth boards
 with some mottling. An attractive copy.
 Provenance: Estate of John Lawford.
 \$600 – \$1000



- 160 Augustus Hamilton
 The Art Workmanship of the Māori Race in
 New Zealand
 A series of illustrations from specially
 taken photographs with descriptive notes
 and essays on the Canoes, Habitations,
 Weapons, Ornaments, and Dress of the
 Māori's...
 Dunedin: Fergusson & Mitchell 1896.
 438p, [1] l., portrait of Tawhaio, illustrated
 throughout including colour plates of rafter
 patterns. Title page with some light finger
 marks, a few minor faults, mainly clean.
 320mm, rebound in modern brown leather
 with gilt rules and titles, binding tight with
 new endpapers.
 Provenance: Estate of John Lawford.
 \$600 – \$800



- 161 Sir George Grey [Association Copy]
 Poems, Tradition and Chaunts of the Māori's
 Ko Nga Moteatea, Me Nga Hakirara O Nga
 Maori.
 Wellington: Printed by Robert Stokes 1853.
 2 p.l., xiv, [7]-432, cxii, 18, [2]p. 230mm,
 red blind stamped cloth gilt titles on spine
 'Poetry of the New Zealanders'. A little fraying
 at spine ends, however a VG copy of a
 scarce item.
 Inscribed on front endpaper 'To H. Shaw
 with Sir G. Greys Regards'.
 This was the first published collection of
 Māori Waiata, which appropriately is a
 comprehensive selection of material given
 to Grey by many tribal authorities ... Bagnall
 2346
 Provenance: Estate of John Lawford.
 \$800 – \$1000
- 162 John P. Ward [3 Pamphlets]
 Wanderings with the Māori Prophets, Te
 Whiti & Tohu
 Being reminiscences of a twelve months
 companionship with them from their arrival
 in Christchurch in April, 1882, until their
 return to Parihaka in March 1889.
 Nelson: Bond, Finney & Co 1883. Adverts
 [2]l., ii p. frontis [portraits] with notation re
 Te Whiti's bowler hat. 136p, [7] l., adverts at
 end. 210mm, foxing and wear to the original
 paper covers, chips and small losses. Worn
 complete copy.
 2. Wirihana Aoterangi – Fragments of
 Ancient Māori History. Auckland: Wright
 & Jacques 1923. 23p, original soft covers,
 Epsom Trust book plate inside cover.VG.
 3. Tamati Poata – The Māori as a Fisherman
 and his Methods. Opatiki: W.B. Scott & Sons,
 1919, 205mm, cover title, 26 p., [1] leaf of
 plates, ill. Soft covers detached with chips at
 edges, contents VG.
 Provenance: Estate of Peter Stratford
 \$200 – \$300
- 163 H.D. Skinner [2 Copies]
 The Morioris of the Chatham Islands
 Memoirs of the Bernice P. Bishop Museum
 Volume IX, Number 1. 140p, xxxv plates each
 with descriptive text, map. 320mm, bound
 into later half leather with cloth boards.
 Clean VG copy.
 2. Another copy, published by Southern
 Reprints, ND [ca 1990] VG. 285mm.
 Provenance: Estate of John Lawford.
 \$200 – \$300



- 164 Horatio Gordon Robley [Association Signed Copy]

Moko; or Māori Tattooing

London: Chapman and Hall 1896. xxi, 216p, frontis and illustrations throughout. Small sprinkle of light foxing throughout, 295mm, bound in original brown cloth gilt titles with illustration on front board of moko. Light wear spine ends and edges.

Inscription on small slip of paper, laid onto corner of half title 'Dear Mr Barber, I beg to present my book, G.R.'

Loosely enclosed a handwritten note in black ink, appears to be Robley's hand dated 10 March 96 – 'General Robley says that he has adopted as a motto to his work on New Zealand tattoo a line from Virgil Aen: VIII & altering one word...' The note refers to the custom of tattooing dying out.

Provenance: Estate of John Lawford.
\$1000 – \$1200

- 165 Rev James West Stack

Kaipohia. The Story of a Siege.

Christchurch: W & T 1893. 94p, frontis & illustrations. 185mm, original paper covers some discolouration VG.

Provenance: Estate of Peter Stratford.
\$100 – \$150

MĀORI PRINTINGS

- 166 Māori Printing – [Govt Publication]

Panuitanga. No. 13. Akarana 27 Hune, 1864.

Notice headed with the Royal Coat of arms, 3p, 345mm. Referring to matters connected with the war in the Waikato. Signed Na Te Pokiha. Near the end the oath of allegiance signed by Wi Tako Ngatata.

Williams 378, xvii.

Provenance: Estate of Peter Stratford.
\$200 – \$300

- 167 The Māori Canoe of New Zealand

Te Waka Māori O Nui Tirani [1871-1877]

Government paper published in Wellington,

3 volumes. Volumes 10-12, 1874-1876. The

third volume 1876-77 is one of the copies

issued as a bound volume edited by James

Grindell of the Native Department with a

separate title page and contains a fldg map

of the Caucasus at the time of the Russo-

Turkish war with place names in Māori

and English. 325mm, bound in half leather

cloth boards, front board vol. 2 detached.

Contents clean and VG.
\$1000 – \$1500

- 168 Missionary Presses [2 Items]
Te Tokomahatanga [Form of Return]
Booklet of ten forms. No Imprint. John Telford records printing and binding 1000 copies in the second half of 1845 following the evacuation of the Church Missionary Society printery to Purewa. A form of entry for Māori Sunday Services, dated in first column 184- columns headed in Māori showing the place, attendance, minister, teacher etc. 140 x 228mm, bound in original green watered cloth. VG.

2. Page of Sunday school reward tickets, printed on card and uncut; A single sheet of 32 reward tickets each with a different Biblical quotation and number indicating the amount of the "reward".

Probably "an early printing by one of the Mission Presses". No imprint but newspaper advertisements for Sunday School reward tickets appear around 1863-1905. The Mission presses were operating earlier – up to the 1860s.

Provenance: Estate of Peter Stratford
\$200 – \$400

- 169 Rev. Richard Taylor [Association Copy]

Māori and English Dictionary

Auckland: George T. Chapman [1870], 2nd

edition. [1] l., adverts, [5] l., 120pp, [8]p

unopened pages at end. 175mm, bound in

limp cloth soft covers, front cover detached.

Paper title label. VG.

With the signature of A.G. Purchas on

endpaper. Ex libris labels of Richard M.S.

Taylor and Epsom Trust.

Provenance: Estate of Peter Stratford.
\$200 – \$300

- 170 Te Karere o te Rongo Pai

A series of twenty-nine tracts

From No. 3 onwards bearing the heading,

"Te Karere o te Rongo Pai," in various styles.

Gisborne published by the New Zealand

Native Tract Institution, between the years

1885 and 1902.

Provenance: Estate of Peter Stratford.
\$60 – \$100

MĀORI & OCEANIC ARTIFACTS

- 171 Greenstone Boulder

River washed greenstone boulder 32 kgs.

Provenance: Estate of John Lawford.
\$800 – \$1000

- 172 Ketu

Wooden digging implement

dark brown wood, oval handle and single

suspension hole, short rounded edged shaft,

paddle shaped blade

L. 396 mm, Y22376

Provenance: Estate of John Lawford.
\$300 – \$400

- 173 Ketu

Wooden digging implement

dark brown wood, oval handle, with single

suspension hole, short rounded shaft and

paddle shaped blade

L. 450 mm, Y22377

Provenance: Estate of John Lawford.
\$400 – \$600



- 174 Ketu

Early 19th century agricultural tool

carved wooden paddle shaped tool, used to

loosen soil around plants, abrasions to point

of the digging end

L. 760 mm, Y2710

Provenance: Estate of John Lawford.
\$500 – \$600



- 175 Kō – Digging Stick

Long digging tool carved from medium

brown wood, plain tapered shaft ending

in flat rounded blade, light patina, blade

chipped and short cracks, small single knob

top of handle

L. 1735 mm, Y22378

Provenance: Estate of John Lawford.
\$600 – \$800

176 Digging Stick
A very long dark brown pole of cylindrical form, hand carved with varying width throughout, tapering at one end to a blunt point and the other end narrowing to the digging end. ? Melanesian origin.
L. 3530 mm, circumference at thickest point 200mm
Provenance: Estate of John Lawford.
\$300 – \$600

177 Kō – Digging Stick
Long carved medium brown pole tapering to a point at one end the other a narrow blunt end. Split in the wood near blunt end.
L. 2470 mm, Y08570
Provenance: Estate of John Lawford.
\$300 – \$500

178 Māhē
Large stone sinker with recessed lashing grooves around the circumference
Approx 250 x 230 mm, Y number pending
Provenance: Estate of John Lawford.
\$200 – \$300



181 Patu Aruhe
Wooden fern root pounder handgrip formed in the first 145mm with rounded butt, flat base
L. 310 mm, Y09047
Provenance: Estate of John Lawford.
\$300 – \$400



182 Patu Muka
Round based stone pounder with pitting marks, shaft smooth, handle and top covered with hammer dressing, the round top is worn but remains of three concentric oval grooves on the top remain
L. 270 mm, Y22355
Provenance: Estate of John Lawford.
\$400 – \$600



183 Patu Muka
Stone flax fibre pounder handgrip formed in the first 100mm, rounded butt & base
L. 240 mm, Y6311
Provenance: Estate of John Lawford.
\$400 – \$600



184 Patu Rākau
19th century wooden patu of medium brown colour, rounded base and short cylindrical handle, oval end knob carved with concentric grooves and ridges, suspension hole with old auction label attached dated 3rd June 1998, carving scratch marks on the body of the club.
L. 420 mm, Y22369
Provenance: Estate of John Lawford.
\$600 – \$800



- 185 Pounamu Cloak Pin or Pendant
A straight pounamu pendant of dark green colour and rounded form, slightly flattened with hourglass suspension hole.
L. 125 mm, Y985
Provenance: Estate of John Lawford.
\$400 – \$600



- 186 Tabua
A 19th century Fijian sperm whale tooth yellowish cream patina, with two suspension holes, one at each end.
L. 140 mm approx.
Provenance: Estate of John Lawford.
\$400 – \$600

- 187 Samoan Club – Fa'alaufa'i
Medium brown heavy Samoan bilateral toothed club.
L. 1055 mm
Provenance: Estate of John Lawford.
\$300 – \$400

- 188 Samoan Club
Wooden war club the shaft widening to the blade which tapers to a point and with a central ridge on the tapered end.
L. 1340 mm
Provenance: Estate of John Lawford.
\$300 – \$500



- 189 Pounamu Ear Kuru
An early ear pendant of light green colour flattened rounded form, the suspension hole slightly to one side, worn, with a small notch to the top edge [resembling an eel with open mouth].
L. 47 mm, Y number pending.
Provenance: Estate of John Lawford.
\$400 – \$600

- 190 Collection Of Toki / Adze etc [5 Items]
Patu – Curved handle section of stone patu possible okewa club. Snapped transversely across mid-section of the blade. Y.22348
Four roughout stone toki – 2 blade ends [Y22340 & Y22341] and 2 poll sections. YY22343 & Y22345]. Size varies.
Provenance: Estate of John Lawford.
\$200 – \$300

- 191 Toki / Adze
Large basalt stone toki of tapered form with curved bevel, flaked & polished finish, dark tone.
Small chips to cutting edge.
L.340 mm, W [blade end] 105 mm, Y6407
Provenance: Estate of John Lawford.
\$2000 – \$4000

- 192 Toki / Adze [2x]
Greywacke Toki with straight sharp blade, short sharp bevel with marked chin, vertical sides, slightly shaped. Poll end chipped ? incomplete.
L. 100 mm, Y number pending.
Toki /Adze stone of dark colour with straight sharp blade, short sharp bevel, poll end broken away.
L. 65 mm Y number pending.
Provenance: Estate of John Lawford.
\$80 – \$100

- 193 Toki / Adze [2x]
Small stone quadrangular toki with flake marks over the entire, surface polishing to blade edge and small flakes off the cutting edge, vertical side taper to straight poll
L. 132 mm, Y22347
Toki /adze, roughout, blade end step and unformed
L. 165 mm, Y22344
Provenance: Estate of John Lawford.
\$200 – \$400

- 194 Toki / Adze [2x]
Small stone toki with flake scars over the entire surface, surface smooth & worn 110mm, Y 22346
Adze / toki with flake scars over entire surface, blade section polished, vertical sides tapering to a straight truncated poll
L. 185mm Y22342
Provenance: Estate of John Lawford.
\$200 – \$300



- 195 Toki / Adze
18th century basalt stone adze with mottled grey colour, one chip on the blade edge, marked 'Ruakaka 2B'
L. 170 mm, Y13909
Provenance – Florence Court Sale [2009].
Estate of John Lawford
\$300 – \$400

- 196 Toki / Adze
19th century stone adze with straight blade with one very small corner chip, steep short bevel, rounded chin, straight vertical sides tapered to rounded poll
L. 156 mm, Y 22360
Provenance: Estate of John Lawford.
\$200 – \$300



197 Toki / Adze
Large toki with slightly curved, chipped blade edge, steep bevel with no marked chin, straight vertical sides, entire surface displays flake scars and hammer-dressing, part polished
L. 284 mm, Y22359
Provenance: Estate of John Lawford.
\$600 – \$900



198 Toki / Adze
Small 19th Century worked pounamu adze, medium green, with white feathering, small chip to blade
L. 53 mm, Y09343
Provenance: Estate of John Lawford.
\$200 – \$400



199 Toki/Adze
Large argillite toki with well-defined edges, raised curve brow to the blade edge, large chip to cutting edge 320mm, unpolished tang to one side of upper section
Upper section 80mm, polished section 255mm [approx.]
L. 320 mm, Y3945
Provenance: Estate of John Lawford.
\$2000 – \$4000



200 Mahi Kōhatu
Worked stone
A symmetrical cylindrical [?] Māori fishing stone. Round hole drilled through the length of the stone. All edges and surfaces worn smooth.
L. 130 mm approx. Y22356
Provenance: Estate of John Lawford
\$300 – \$400

201 Mahi Kōhatu
Worked stone
A symmetrical irregular shaped [?] pounamu pendant. Round hole drilled through the top, a small protrusion above the hole has four grooves, all edges polished and smooth. Possible portion of kākā pōria/bird leg ring.
L. 40 mm, Y22358
Provenance: Estate of John Lawford.
\$200 – \$400



202 Mahi Kōhatu
Worked stone
A carved stone of slightly flattened spherical shape, with parallel notched ridges around the circumference with circular notched ridges on each side. There is a drilled hour glass suspension hole at the top of the shape, a separate greenstone pendant has been tied to the main stone through this hole. The hole is flanked by two protrusions carved with two faces, the whole has a flattened base and can stand on this surface, the shape has a resemblance to a carved stone fishing weight.
L. 120 mm [approx.], Y22389
Provenance: Chapman Collection; Estate of John Lawford.
\$2000 – \$3000

203 Mahi Kōhatu
Five Pounamu worked stones
Three small thin shaped toki pounamu, possibly ornaments, L. 30 mm approx. Y22351; Y22352; Y22353.
Pounamu adze flake, roughly triangular shape, L. 38mm, Y22350
Worked stone – roughly rectangular polished pounamu, L. 68mm, Y22349
Provenance: Estate of John Lawford.
\$200 – \$400

204 Worked Stone
Two seated figures back-to-back with arms on knees, eyes nose and mouth carved, origin unknown
L. 175 mm
Provenance: Estate of John Lawford.
\$600 – \$1000

MAPS



- 205 Admiralty Hydrographic Office
Entrance to Auckland Harbour
Surveyed by J. L. Stokes, Comd B. Drury and the Officers of H.M.S. Acheron and Pandora 1849-55, published 1857.
Corrections to 1875 & 1882. No 1896, hand coloured, framed to plate mark, 480 x 650 cm, framed.
Provenance: Estate of John Lawford.
\$500 – \$800

- 206 Admiralty Hydrographic Office
New Zealand, North Isle, Shouraka Gulf and the mouth of the River Thames
From the surveys of Captain James Cook 1769 – 1834
Engraved, sprinkling of foxing, tear to top right margin, laid down on card, published 1836. 640 x 480 mm unframed.
Provenance: Estate of John Lawford.
\$300 – \$500

- 207 Admiralty Hydrographic Office
New Zealand. The Northern Coast from Hokianga.
On the West to Tutukaka on the East surveyed by Captain J.L. Stokes, Commander Drury, and the Officers of H.M.S Acheron and Pandora 1849 – 55, double plate engraving, Nos 3193 & 252, published 1857, 670 x 1000 mm, unframed.
Provenance: Estate of John Lawford.
\$600 – \$800



- 208 Auckland Lithograph 1877
By Macfarlane & Begg [lithographer]; W.C. Wilson & Sons [publisher] [1877]
A rare panoramic view of Auckland, surrounded by miniature views of Parnell, Newton, North Shore; New Zealand Insurance Co., Supreme Court, St Paul's Cathedral, Nathan & Co., St James's Church, Post Office, Government House, Hospital, Theatre Royal, St Patrick's Cathedral, William McArthur & Co., St Matthew's Church, and Museum. On paper, backed with cloth 410 x 515mm. Sepia tones, some light spotting and edges rubbed. VG.
Provenance: Estate of John Lawford.
\$2000 – \$4000

- 209 Jacques Nicolas Bellin
Essai d'une carte réduite contenant les parties connues du globe terrestre
Dedie A M Le Comte De Maurepas... par N. Bellin, ingénieur ordinaire de la Marine 1748 [ca1780], 520 x 715mm. Hand coloured, map of the world on a Mercator projection, decorative cartouche. VG.
This map, first published in 1748, was reissued ca 1780 with the latest geographic discoveries. Published shortly after Bellin's death in 1772, it underlines the importance of his work to European geography. New Zealand, in the east, is drawn based on Cook's detailed survey completed during his first voyage to observe the Transit of Venus in Tahiti, which is shown on the left portion of the map.
\$300 – \$500

- 210 Bowen Thomas [2x]
The World including the late Discoveries by Captn Cook and other Circum Navigators carefully laid down to the present time. London ca 1775. Illustrated decorative double hemisphere map of the World, showing the tracks of Captain James Cook's first voyage of exploration and the circumnavigation of Anson. It includes a small map of the northern hemisphere. Black & White map with crease marks, sheet 350 x 470mm
2. Chart – Pacific Ocean.
A chart exhibiting the new discoveries in the north & south Pacific Ocean: also those on the north-west coast of America [? London 1780] sheet 380 x 465mm. Fold marks with short marginal tears.
\$200 – \$400

- 211 James Cook
Kaart van Nieuw Zuid Wales of de Oostlijke Kust van Nieuw Holland, ontdekt en onderzocht door Luitenant J Cook met het schip de Endeavour in het Jaar 1770. [Map of New South Wales or the east coast of New Holland, discovered and researched by lieutenant J. Cook with the ship the Endeavour in the year 1770.] Copper engraving made by Cornelis van Baarsel, published around 1797. Dutch edition of James Cook's first map of New South Wales. Uncoloured map sheet 390 x 820mm. Fold marks, clean & VG.
\$300 – \$400

- 212 Captain M.L.I. Duperry
Carte De La Baie des Iles (Bay of Islands) (Nouvelle Zeelande),
Expedition de la Corvette de SM la Coquille, (Commanded) par M.L.I. Duperry, Capitaine de Frigate, April 1824, No 19, engraved, light sprinkling of foxing, published 1826, mounted to plate mark, framed 490 x 760 mm.
Provenance: Estate of John Lawford.
\$600 – \$800

- 213 Reiner & Joshua Ottens
Magnum Mare del Zur cum Insula California | De Groote Zuyd-Zee en 't Eylantl California
Amsterdam by L. Renard ca 1717, reissue of Frederick De Wit [1675]
Map of the Pacific Ocean showing the west coast of America with California as an island, and the north coast of Australia and the south coast of Tasmania and part of New Zealand.
Hand coloured map, decorated with sailing ships, two compass roses, and sea battles all intertwined within an impressive network of rhumb lines. Elaborate decorative cartouche, sheet 520 x 605mm
\$1000 – \$1200

- 214 Charles Heaphy
Plan of Fort St, Auckland
Pen & wash plan of a piece of land in Fore Street, Auckland, showing the land between Queen Street [Metropolitan Hotel] to a piece of land owned by G.S. Stewart Esq, bounded by a Lane. Signed by A.K. Churton, dated 1861 and notated in several places. 430 x 540 mm framed & mounted.
Signed off by Charles Heaphy, Provincial Land Surveyor, with explanatory notes, April 20th, 1861.
An interesting item relating to the early commercial hub of Auckland.
George. S. Graham's work for the Royal Engineers involved public works, roads and military installations. Graham supervised the enlargement of the Albert Barracks and the construction of fortifications. He later became a politician and farmer being described by one newspaper as a noted Māori sympathiser.
Provenance: Estate of John Lawford.
\$1500 – \$2500



- 215 James Imray & Sons
Western Pacific Chart No.1
London: James Imray & Sons 1883. Large blue-backed hydrographic chart on two sheets 1280 x 1040mm. Including southeast Australia and New Zealand extending as far west as the Chatham Islands. With inset maps of Port Jackson, Cook Strait, Perseverance Bay, Campbell Id, Lyttelton, Port Ross, North East Bay, Auckland Islands, Nicholson.
Crease down the centre of chart a few spots and short marginal tears, generally VG. Scarce.
\$800 – \$1200

- 216 Labillardiere – Indian Sea
Carte Reduite de la Mer des Indes, et d'une partie de Celle du Sud, Dressee par J. D. Barbie du Bocage; Pour la Relation du Voyage a la Recherche de la Perouse, du Cen. Labillardiere.
Paris [ca 1800]
Paper folding map in 4 parts mounted on cloth 500 x 735mm. Clean and VG
\$300 – \$400

- 217 Edward Stanford
Map of the Province of Canterbury, New Zealand
Shewing Freehold Sections and Pasturage Runs from Admiralty Charts and Colonial Surveys, with Communications from Colonists. London: Edward Stanford 1856.
Inset map 'Enlargement of the Neighbourhood of Christchurch shewing the Freehold Sections'. A sectional hand-coloured folding map 682 x 1030mm, some light toning and fingermarks. In a later blue cloth case with gilt title. Loosely enclosed a photocopy of the original land purchasers with the corresponding numbers on the map of the land blocks they had purchased.
\$500 – \$700

218 John Varty
Map of Waikato & Coromandel Peninsula
335 x 310mm, fold mark across middle with short split in paper, and a few small edge chips.
Imprint Varty Litho Auckland in left corner, no date, circa 1860's. Hand coloured paper map showing the names in Māori of the Iwi's and their lands. They include Ngatiwhatua; Ngatitai; Ngatipaoa; Ngatimaru; Ngaiterangi; Ngatiamatera and Ngatiwhanaunga and the upper and Lower Waikato Districts. Clear and decipherable.
Estate of Peter Stratford.
\$400 – \$600

219 James Wyld
This Chart of New Zealand
From Original Surveys is respectfully Dedicated by His obedient Servant James Wyld.
London: Published Feby 9 1840 by James Wyld, Geographer to the Queen Charing Cross East. Third Edition. Sectional folding, hand coloured chart of New Zealand, 825 x 585mm with seven inset maps Plan of the Entrance to Port Manouako (Manukau Harbour); Plan of Dusky Bay; Plan of Southern Port, Stewarts Island; Plan of the Bar and Part of the Hokianga River; Plan of Victoria, Bay of Islands; Port Nicholson; Oyerri or Pelorus River (Marlborough Sound). Some attractive copy. Folds into the original slip case with title label.
Provenance: Estate of John Lawford.
\$800 – \$1200



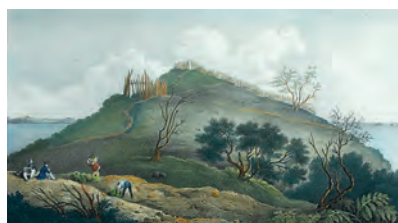
220 Antonio Zatta
La Nuova Zelanda trascorsa nel 1769 e 1770 d'al Cook Comandante dell' Endeavour Vascello di S. M. Britannica
Venice 1794. Hand coloured map with decorative cartouche showing a native village scene.
A scarce copy of the second edition, one of the first to show the results of Cook's voyages, showing his tracks around the islands along with astronomical observations. Top edge and left margin trimmed, right margin neatly replaced no loss to the chart, sheet 473 x 373 [approx.]
\$600 – \$800

HISTORIC NEW ZEALAND ART & PRINTS

221 Charles D. Barraud [3x]
1. Auckland Harbour, chromolithograph, 250 x 350 mm, 1875
2. Wakefield – Edward. Auckland Harbour. N.Z. coloured lithograph, published by A.D. Willis 1889
3. (Vogel. Julius.) Hokitika River, from the town of Hokitika, hand coloured wood engraving, 97 x 155 mm, 1875
All framed.
Provenance: Estate of John Lawford.
\$150 – \$300

222 George Baxter
The Rev. J. Waterhouse superintending the landing of the missionaries the Rev Charles and Mrs Creed at Paranake (Taranaki), New Zealand
a contemporary advertisement and Wesleyan Mission description of the event inset on the reverse. 'Our reception among the natives was very encouraging. As soon as Mr & Mrs Creed approached the shore, in the boat, they began to cry out 'Emata' 'Emata' that is 'O Mother' 'O Mother' and seven females immediately ran into the sea, up to their shoulders, caught her up in their arms, And carried her on shore Coloured print, London 1844, 300 x 410 mm framed & mounted.
Ellis 167.
Provenance: Estate of John Lawford.
\$300 – \$500

223 De Sainson
L'Astrolabe dans la passe des Francais. (French Pass) (Nouvelle Zélande)
Pl 40, hand coloured lithograph, 1833. 280 x 390 mm framed & mounted.
Provenance: Estate of John Lawford.
\$300 – \$400



224 De Sainson
Vue de Kahouwera. Village fortifié a la abai des iles (Nouvelle Zélande)
Pl 51, hand coloured lithograph, 1833. 300 x 390 mm, framed with 'Kauuwhera Pa – Bay of Islands 1827' inscribed on mount.
Provenance: Estate of John Lawford.
\$300 – \$400



225 De Sainson
Village de Korora-reka (Nouvelle Zélande)
Hand coloured lithograph, Pl 61, 1833, 300 x 390 mm, framed & mounted.
Provenance: Estate of John Lawford.
\$300 – \$400

226 De Sainson [1x]
La Corvette L'Astrolabe. Hand coloured lithograph, Pl 105, 290 x 390 mm.
Framed and mounted.
Provenance: Estate of John Lawford.
\$200 – \$400

227 De Sainson
Vue Prise a la Baie des Iles (Nouvelle Zélande)
Hand coloured lithograph, 1833. Pl 62, 250 x 265 mm, framed & mounted.
Provenance: Estate of John Lawford.
\$300 – \$400

228 Charles Heaphy
Part of Lambton Harbour, in Port Nicholson, New Zealand
comprehending about one third of the water frontage of the Town of Wellington. Published for the New Zealand Company by Smith, Elder, lithograph, hand coloured, 1841, 430 x 540 mm.
Provenance: Estate of John Lawford.
\$200 – \$300

229 John C. Hill
Admiral, Lord Jellicoe
Second Governor General of New Zealand 1920-1924. Crayon & pastel, signed lower left, 350 x 220 mm, mounted and framed.
John Hill, 1889-1974 was the cartoonist for the Auckland Star.
Provenance: Estate of John Lawford.
\$100 – \$200

230 Cyrille P. Laplace
Plage de Korora – Reka [Nouvelle Zélande]
de Sainson edit, coloured aquatint 1835. 240 x 310mm, framed & mounted.
A fine impression rare in this condition relating to the Voyage of the Favorite under the command of La Place that visited the Bay of Islands in 1830. Ellis 140
Provenance: Estate of John Lawford.
\$400 – \$600

231 Trevor Lloyd
Tree Ferns
Etching
titled and signed
340 x 215 mm, framed
Provenance: Estate of John Lawford.
\$200 – \$300

232 Menard
Village de Koro-rareka (Nouvelle Zélande), 'Watering Bay, Early Russell'
Hand coloured lithograph 1841, inscribed on mount, 180 x 270 mm framed & mounted.
Ellis 143. Scarce.
Relates to the Voyage of the Venus 1836-1839 commanded by Abel Du Petit-Thouars.
Provenance: Estate of John Lawford.
\$300 – \$400

233 Walter Wright
At the Empire's Call: New Zealand Troopers Sailing for The South African War
Coloured print, published by Brett Printing Co Ltd, Auckland, in original wood decorated frame. (1899), 420 x 950 mm
Provenance: Estate of John Lawford.
\$200 – \$400

ART & ENGRAVINGS

- 234 Artist Unknown
Farm workers with donkey crossing a bridge in a rural landscape
oil on canvas, British 19th Century School in the Style of Constable
890 x 690 mm, in fine period gilt frame
Provenance: Estate of John Lawford.
\$1000 – \$1200

- 235 Artist Unknown
Pomona Goddess of Fruit (on a chariot pulled by two tigers)
coloured print on the reverse side of glass, English (1810)
190 x 240 mm, framed
Provenance: Estate of John Lawford.
\$150 – \$200



- 236 Frank Brangwyn
The Tow Rope
drypoint etching (1906)
titled in pencil with artists monogram
145 x 210mm, mounted and framed
Very good condition, one or two light spots.
Provenance: Estate of John Lawford.
\$200 – \$300

- 237 Oswald W. Brierly
'Fatshan Creek', The 'Raleigh's gig sinking and the crew disabled Commodore Keppel shaking his fist at the enemy'
Tinted, coloured lithograph, published by Day & Son, London 1857, 425 x 605 mm, framed & mounted.
Provenance: Estate of John Lawford.
\$400 – \$800

- 238 Chinese Artist
Two Junks
gouache and watercolour on silk, ca 19th Century
each 170 x 260 mm, each framed & mounted
Provenance: Estate of John Lawford.
\$100 – \$200

- 239 Bernard. R.A. Fleetwood-Walker
Reclining Nude
oil on canvas
label on reverse 'B. Fleetwood-Walker Memorial Exhibition. Reclining Nude 65'
545 x 380 mm, framed
\$600 – \$1200

- 240 Bishop W. Follen (1856–1936)
English landscape – Autumn colours, river valley and cottages
watercolour
signed lower right
580 x 780 mm, contemporary gold frame
Exhibited at the Royal Academy from 1882. Travelled extensively in Britain and the Channel Islands. Reputed to have lived in South Australia for several years.
Provenance: Estate of John Lawford.
\$600 – \$800

- 241 G.H.T.
Satirical study of a young Native boy leading a Rhinoceros by its horn.
watercolour
signed with initials lower left
195 x 260 mm, mounted and framed
\$100 – \$300



- 242 Norman. Lindsay [2 Etchings]
1. Love on Earth. No 274, signature, 1925, inscribed in pencil, artist's impressed stamp on bottom margin, blue/gray, 420 x 330 mm;
2. Virtue. No 370, signature.1921, inscribed in pencil, artist's impressed stamp on bottom margin, blue/gray, 390 x 300 mm. Copper plate etchings, framed as a pair. (2)
Provenance: Estate of John Lawford.
\$1000 – \$2000

- 243 Edward Lear [In the style of]
19th Century English School – South Eastern European, Balkan type landscape with figures and thatched Pavilion in foreground; oil on canvas laid down on board
label on reverse, collection: 'William Bromley – Davenport. Baginton Hall then removed to Capesthorpe Hall.
470 x 800 mm, in finely carved gilt rococo mid-19th century frame
Provenance: Estate of John Lawford.
\$800 – \$1600



- 244 Lieut L.G. Heath [Drawn By]
Hongkong As seen from the Anchorage
Drawn by Lieut L.G. Heath of the HMS Iris.
Three coloured engravings published by the Hydrographic Office of the Admiralty, May 4th, 1847.
Pulled from the original Admiralty copper plates in 1991 to commemorate the 150th anniversary of the cession of Hongkong to the United Kingdom. Over all 655 x 780 mm, framed & mounted.
Provenance: Estate of John Lawford.
\$200 – \$400

- 245 Lionel P. R. A. Smythe
Waiting for the Boats
oil on canvas
signed and dated 1872 lower right
290 x 190 mm, contemporary carved rococo frame
Provenance: Estate of John Lawford.
\$600 – \$1200

- 246 Christine Webster
Hydrangea Woman
cibachrome (framed fragment) 1993/95
Gow Langford Gallery Exhibition label on the reverse
1035 x 292 mm, framed
Provenance: Estate of John Lawford.
\$1200 – \$2000

- 247 Geoff Williams
Reclining Nude Woman
oil on canvas laid down on board
signed lower right
350 x 650 mm, framed
Provenance: Estate of John Lawford.
\$2000 – \$3000



- 248 Johanne Zoffany
Colonel Mordaunt's Cock Match
At Lucknow in the Province of Oude in the year 1786 at which were present several High and Distinguished Personages.
Engraved by Richard Earlom, hand coloured mezzotint, margins, framed to plate mark, 460 x 590mm. Key to the sitters in the picture mounted on the reverse, (1794)
Provenance: Estate of John Lawford.
\$300 – \$600

PHOTOGRAPHY

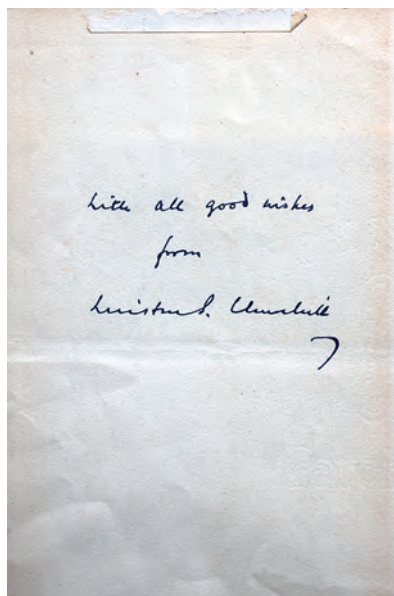
- 249 Valentine Lawford [Association Copy] [3 Titles]
Horst. His Work and His World.
New York: Alfred A. Knopf 1984. Inscribed by Valentine Lawford and dated 1988, signed by Horst. 396p, colour & black and white plates. DJ, VG.
2. Martin Kazmaier – Horst. Sixty Years of Photography. Thames and Hudson 1991. 279p, black & white plates, some adhesion issues with pages. DJ.
3. Robin Morrison – A Journey. Introduction by Laurence Aberhart. Tandem Press 1994. 44p, 25 black & white plates. Cloth covers & endpapers foxed. DJ.
Provenance: Estate of John Lawford.
\$100 – \$150
- 250 Robin Morrison
From the Road. The South Island of New Zealand.
Alister Taylor, The Old Post Office 1981. 155p, of coloured views from photographs, frontis [map].
Oblong 270 x 370mm. Blue laminated boards, and in DJ, a little shelf faded as usual and with small neat owner signature on endpaper. VG.
\$200 – \$400



- 251 Photograph Album – India
26 images, ten with the photographer's initials D.D. [Lala Deen Daya] and numbered. 22 of the images are 210 X 270mm and 4 are 205 x 135mm. Most are inscribed in pencil on the card mount they include Group of 5th N.I. on their return Afghanistan 1880, Agra; 2 photographs of the old Fort at Burwa, Sangor with Sir I. Giffins camp and followers 1882; Regimental Gymnasium – Thansi 1882; a number of various temples; Edwin on "Moody" at Thansi with orderly Bagh Singh. 1881.
Some light fading and fingermarks. Bound in full cross hatched tooled leather with Indian Photographs in gilt front board, rebaked in modern maroon leather.
Provenance: Estate of John Lawford.
\$300 – \$500
- 252 Royal Airforce Photographs [2x]
1. Vickers Vildebeest or Vincent. 195 x 200mm framed. Ca 1930's
2. Avro Anson 200 x 280mm framed. Ca 1930's.
Provenance: Estate of John Lawford.
\$150 – \$200
- 253 H. Winkelmann
The Viking
photograph, signed lower right, in contemporary wood frame 300 x 380 mm. 'Viking' was built by Charles Bailey Inr for G.L.R Blomfield of the N.Z. Yacht Squadron and launched in December 1893. In 1920 she was purchased by Sir Ernest Davis who later presented her to the Royal N.Z. Navy for training officers and men under sail.
Provenance: Estate of John Lawford.
\$200 – \$250

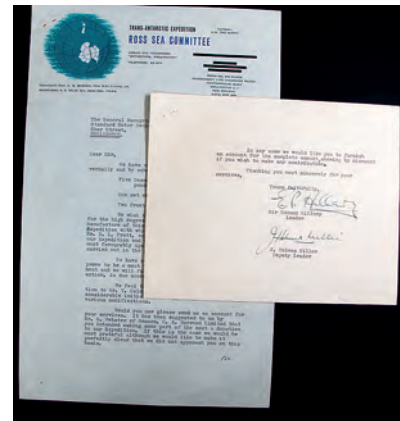
AUTOGRAPHS & STAMPS

- 254 Archive of Letters
Manuscript Letters – Roberts to Surgeon General Taylor [19x] and others
Field Marshal Frederick Roberts to Surgeon General Taylor, dated between 1896 and 1904, most of them on letterhead note paper which includes: 47 Portland Place W.; The Royal Hospital Dublin, [4x] 1896-1897; Snowden. Simla, [1x] 1892; War Office, London, S.W. letters 1902-1904 [10x] letters; Mackellar's Hotel London one 1897; Portland Place, [1x] 1903; Eighteen letters in total, some with envelopes.
Several pages of letters on 42 Portland Place letter head from Lady Roberts to General Taylor appear to be regarding nursing services.
Also to General Taylor letters from Viceregal Lodge Simla [3x], [1]x from Viceroy's Camp, and [1x] from Government House Calcutta all undated various authors.
Letter to General Taylor from Frances of Teck dated '09.
Letter on Windsor Castle letter head in original envelope addressed to Surgeon Colonel W. Taylor, P.M.O. Ashanti Expeditionary Force, 18 Victoria Streets, London, from Sir James Reid [Physician to the Queen] to General Taylor dated 1996 regarding the death of Prince Henry of Battenberg.
Two Visitors cards from Lady Curzon at Home to Surgeon General W. Taylor. Six of the original envelopes, some postmarked. Vanity Fair 'Spy' lithograph – 'Bobs'. Cartoon of General Roberts in uniform, signed by him in ink on the bottom margin. Framed.
Provenance: Estate of John Lawford.
\$300 – \$600
- 255 Autograph – Montgomery of Alamein
Signature of 'Montgomery of Alamein' F.M. April, 1970. Mounted into the base of a framed magazine image of himself.
Provenance: Collection of Des Schollum No.13; Estate of John Lawford.
\$100 – \$150



- 256 Autograph – Winston Churchill [1874–1965]
British Statesman and Prime Minister.
Handwritten message 'With all good wishes from Winston S. Churchill'. Single sheet of watermarked paper 200 x 125mm.
Provenance: Estate of John Lawford.
\$600 – \$1000

- 257 Autograph and Letter
Admiral Roger Keyes, Commander in Chief of the 'Mediterranean Fleet' 1925-1928.
Typescript letter expressing his gratitude to the officers and men of the Mediterranean fleet' Dated 5th June 1929 and signed Roger Keyes.
Photograph of him in naval uniform inscribed 'Caradoc' & 'Royal Oak' signed and dated by Roger Keyes.
Mounted and framed together.
Provenance: Estate of John Lawford.
\$100 – \$200



- 258 Autographed Letter – Trans-Antarctic Expedition
Signed by E.P. Hillary [leader] and J. Holmes Miller [deputy leader] on the letterhead of the Ross Sea Committee dated 22 November 1956 to The General Manager, Standard Motor Bodies, Ebor Street Wellington. The letter on two leaves, records their thanks for the sledges and transport equipment they have supplied for the expedition. Signed in ink at end.
Provenance: Estate of John Lawford.
\$300 – \$500
- 259 Autographs
Edward, Duke of Windsor and Wallis Windsor
Vintage ink signatures, 'Edward, Duke of Windsor' and 'Wallis Windsor', on correspondence paper sheet bearing royal letterhead. 90 x 140mm, small tape marks in the corners else very good condition.
Provenance: Estate of John Lawford.
\$300 – \$500
- 260 Jean Batten [Ephemera]
Letter and two photographs in mount, the letter typed and signed in ink with ink notation by Jean Batten, dated 10-6-35. Regarding a kitten which had been living at Mascot Airport [original name for Sydney Airport] given to 'Ivy' for care. The letter mounted between the two photographs, one of Jean Batten the other 'Ivy' both with the kitten. centre. With associated newspaper clippings.
2. Small scrapbook of newspaper clippings regarding the 1937 Airlines of Australia Stinson crash and the rescue.
3. Alone in the Sky. NZ: Technical Books 1979, signed and inscribed by Jean Batten. DJ.
Provenance: Estate of John Lawford.
\$150 – \$250

- 261 Felix Count Luckner
Autograph on a piece of notepaper
140 x 100mm [‘Never say die! – Felix Count Luckner ‘38’]
Count Luckner was a German nobleman, naval officer, who earned the epithet ‘the Sea Devil’, for his exploits during the First World War.
Provenance: Estate of John Lawford.
\$100 – \$200



- 262 Photograph – Wallis Windsor
Framed and mounted photograph of Wallis Windsor standing on steps, light crease, signed in ink on the mount Wallis Windsor. 105 x 95mm.
Provenance: Estate of John Lawford.
\$200 – \$300

- 263 Photograph & Autographed Letter – W.S. Maugham
Typescript Letter on letterhead notepaper, dated August 9th, 1928 to Mrs Bertie Heymann answering a query regarding Constance [The Constant Wife] ... the Constance of my play lives in a world of comedy in which the habits and custom are not the same as those of Leipzig or London ... signed W.S. Maugham.
Framed together with a portrait photograph of W. Somerset Maugham.
Provenance: Estate of John Lawford.
\$100 – \$200

- 264 Manuscript Letter
Thomas Donne to Arthur Pycroft 6th July 1937
An interesting handwritten two-page letter dated London 6 July 37, beginning ‘In ref to the eight original watercolour drawings of Māori subjects by Geo French Angas 1843... regarding the Auckland Museum agreement to buy the collection from Donne for 1000 pounds. Unfortunately the benefactor Mr Moss Davis died shortly after the letter confirming the offer was sent. “As the Hon. Elliot Davis is now in London ... it occurred to that he might be willing to fulfil his father’s promise... I would like the pictures to go to N.Z preferably Auckland, as some of the Māori were of Taupo and the Barrier Island”. Donne’s collection of George French Angas paintings was sold at Sotheby’s in 1972
Provenance: Estate of John Lawford.
\$300 – \$500

- 265 Manuscript Letters – British Politicians
1. Arthur James Balfour to My Dear Sir [H.B. Marshall Esq.]
On Dowling Street Whitehall Letterhead crossed out and inscribed Private, Whittinghame Preston Kirk Oct 15th 1900. Short note thanking for its ‘enclosure’. Balfour perhaps best known for authoring the ‘Balfour Declaration of 1917, when serving as Foreign Secretary which supported the establishment of a Jewish Homeland in Palestine.
Norfolk.
2. Norfolk to Professor Meiklejohn – Manuscript letter with blind stamped letterhead ‘Her Majesty’s Post Master General’, dated March 4. 1898. Letter from the Duke of Norfolk thanking Meiklejohn for his ‘kind efforts to teach me to talk. London has rejected my impassioned appeals at three meetings last week, to return moderates to her Council’.
3. Augustine Birrell [1850-1933] British Liberal Party Politician and Essayist, manuscript letter to M.J.C. Meiklejohn.
4. Walter Besant -Victorian social reformist and novelist. manuscript letter to M.J.C. Meiklejohn
5. George Wyndham, British Politician and Writer – Autograph.
With 2 card leaves from an autograph book with 6 indecipherable signatures
Provenance: Estate of John Lawford.
\$200 – \$400

- 266 Sir Francis Knollys to Queen Alexandra [1903]
Manuscript letter on H.M. Yacht Victoria & Albert letterhead edged in black and dated 2 Augt 1903.
Letter addressed to ‘Madam’ and signed ‘I have the honour to be Madam, your Royal Highness Faithful and Obedient Servant, Knollys’ regarding a communication by the Queen to Mr Brodrick [Secretary of State] forwarded to him by the King. “His Majesty thinks it is advisable that I should ask you to see me...’
? in regard to reforms and the reorganization of the Army Nursing Service Reserve.
Provenance: Estate of John Lawford.
\$100 – \$150



- 267 Stamp Albums [2x]
First Days Covers and British Empire, World.
1. First Day Covers – Approximately 76 covers dating from 1930’s to 1950’s includes Tin can Mail, Victory, Australian National Antarctic Research Expedition Heard Island, George VI Coronation Also six pages of early Australian stamps.
2. British Empire and World Album – Dating from 1850’s [Cape of Good Hope] to 1940’s includes Australia, Americas & Caribbean and Pacific Stamps, India, Hongkong etc
Condition varies with spasmodic foxing and toning.
Provenance: Estate of John Lawford.
\$400 – \$600



- 268 Stamp Albums
1. Collection vintage stamps in two albums, many dating from 1850’s. Includes a large collection of New Zealand stamps – Health includes Blue Boy, Nurse ; several 1925 New Zealand exhibition 1/2d, 1d & 4d; full face and side face queens including several two penny blues; 1899 – 1907 New Zealand pictorials; Auckland Exhibition 1913; Postage & Revenue; Airmail; etc. Also includes South Sea Islands and Canada and World.
2. Australian Album – many Queensland include – Victoria one pound & ten & five shillings; 2d blue cracked plate; South Australia – Side face queens, Postage & Revenue, side face queens with O.S over stamped, some halfpenny; Victoria stamps [1850’s] featuring half portraits [2d & 3d] and full length portraits [6d] of the Queen etc; Western Australia
Tasmania & Van Diemens Land 1850’s -1870’s.
Samoa & Western Samoa – Samoa 1895 5d, Samoa overprints, German Samoa GRI overprints. South Sea Islands & World.
Condition varies with spasmodic foxing & toning throughout.
Provenance: Estate of John Lawford.
\$800 – \$1200

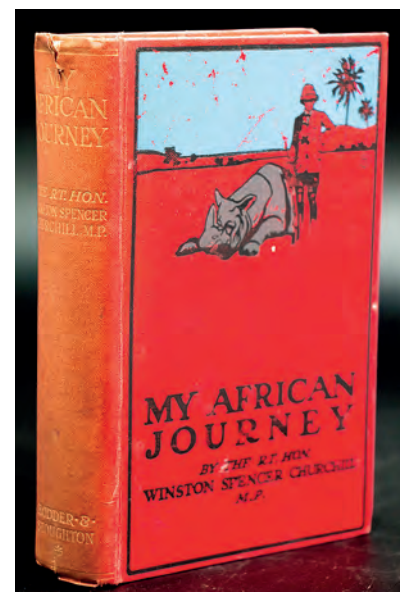
- 269 Thomas Lipton to Surgeon General W. Taylor 1899
Thomas Lipton to Surgeon General W. Taylor, Principal Medical Officer, British Army, India.
Three typescript letters signed by Thomas Lipton on Lipton Limited letterhead. With details of travel
Expenses etc regarding General Taylor's son who was to work in Ceylon on a tea plantation and assuring him his son will be well looked after '... I have given instructions that he will get a good training in all branches in connection with tea and his success in the future will depend entirely on himself.
The final letter dated 28th March 1899
'... I had the honour of lunching with HRH Princess Christian last Wednesday at Lady Leune's and she talked to me privately regarding yourself...' The letter goes on to talk about the possibility of further business in the West Indies.
Provenance: Estate of John Lawford.
\$100 – \$200
- 270 Typed Letter – Governor-General Freyberg to John Edwin Hunt [1951]
Typescript letter on Government Letterhead, Wellington 10th December 1951. Signed in ink 'Yours Sincerely Freyberg. The letter proposes to submit Mr Hunt's name to the King for the honour of Officer of the Civil Division of the most Excellent Order of the British Empire and requests him to reply. Together with the Programme for the 21st Anniversary Celebration of the Royal Society of St George [1958] Back cover with autographs of Sir Walter Nash [27th Prime Minister of New Zealand]; Iris and Frank Kitts [Mayor & mayoress of Wellington]; Keith Holyoake [Prime minister of New Zealand]; And two others.
2. Sir Bernard Fergusson in ceremonial uniform, framed portrait by Earle Andrews Wellington signed on the mount Bernard Fergusson 1967. 240 x 195mm, Ink signature lightly faded.
Provenance: Estate of John Lawford.
\$100 – \$150
- 271 Typescript Letter Signed Douglas Bader
Letter dated London 12th April 1949, signed by Douglas Bader. Written to Douglas and thanking him for leaving a bottle of coco cola at a mutual friends Mr & Mrs Hazlett home and requesting him to leave another next time he visited.
Group Captain Sir Douglas Robert Steuart Bader, CBE, DSO & Bar, DFC & Bar, DL, FRAES was a Royal Air Force flying ace during the Second World War.
Provenance: Estate of John Lawford.
\$50 – \$100
- 272 Vice Admiral Sir Philip Vian [1945] to Citizens Of Wellington
Manuscript letter on the letterhead of HMS Indefatigable, HMS Wizard & HMS Urchin Thanking them for their kindness and hospitality during their visit to Wellington, signed Goodbye & Thank you. Philip Vain V/A 4.12.45
Provenance: Estate of John Lawford.
\$50 – \$100

CHURCHILL

- 273 Winston Churchill [2 Items]
Calendar
Cut out cardboard figure of Winston Churchill titled along the base, 'Come then – Let us to the task', with a small 1943 calendar attached and with the Churchill quote on the front. 210mms, original cardboard stand verso.
2. Peter the Pilot Album 'British Might', 1942 series. Complete with all cards, showing showing portraits of Churchill, war heroes and film stars, game in centre fold. Diamond O-tis Advertisement on back cover. Light creases and scuffing, VG.
Creation of Bernard Roundhill. C.W.S Ltd [Coulls Somerville Wilkie] on back cover.
Provenance: Estate of John Lawford.
\$100 – \$150



- 274 Winston Churchill – Group of Three Press Photographs
1. Churchill and Tito – All Smiles. March 16th, 1953. Prime Minister Winston Churchill with Marshall Tito, head of the Yugoslav nation, at 10 Downing Street shaking hands. Press description verso. 145 x 185mm.
2. Churchill Tour- Mr Churchill Says goodbye to Glasgow as he leaves the Conservative Club en route for Edinburgh.
3. Photograph of Churchill, inscribed in pencil verso 'Churchill with Leslie Hore-Belisha, Beveridge and others. 230 x 180mm.
Provenance: Estate of John Lawford.
\$300 – \$400
- 275 Winston Spencer Churchill
London to Ladysmith via Pretoria
London: Longmans, Green and Co 1900. xiv, 498p, publishers adverts at end, 3 folding maps, 1 text map and 4 plans. Some foxing, mainly front and back pages. front endpaper and paste down has been professionally replaced using black paper as in the original. Bound in original beige pictorial cloth, light marks and wear.
Provenance: Estate of John Lawford.
\$200 – \$300



- 276 Winston Spencer Churchill
My African Journey
London: H & S 1908. xiii, 226p, complete with frontis, plates and 3 maps. 195mms, original pictorial red publishers' cloth, spine lightly faded and short split [1cm] in head cap. Some browning and light sprinkle of foxing on endpaper
Provenance: Estate of John Lawford.
\$200 – \$300
- 277 Winston Churchill
Box of Titles – War Speeches
1. The End of the Beginning, 1942. Cassell and Co 1943; 2. Onwards to Victory, 1943. Cassell and Co 1944; 3. The Dawn of Liberation, 1944. Cassell & Co 1945. 4. Victory, 1945. Cassell & Co 1946. All in DJ, some chipped with short tears.
5. Compiled by Randolph S. Churchill – Into Battle. Cassell and Co 1941. DJ; 6. Compiled by Charles Eade – The Unrelenting Struggle. Cassell & Co 1942. DJ, torn with losses. 7. Randolph S. Churchill [editor] – Europe Unite. Speeches 1947 and 1948. Cassell & Co 1950. DJ. 8. Eugen Spier – Focus.
A footnote to the history of the thirties.
London: Oswald Wolff 1963. DJ, fine copy. Condition varies, G+ to VG, all first editions.
Provenance: Estate of John Lawford.
\$200 – \$250
- 278 Winston Churchill
My Early Life [Plus]
A Roving Commission. Ln: Thornton Butterworth Ltd 1930, first edition, first impression, second issue with the first volume of World Crisis listed in the "Works by the same author" verso of half title. 392p, frontis, plates, maps and one fldg map. Some lines of text underlined with light pencil, spotting to text, bound in original pink cloth with gilt titles and publisher's logo blind stamped front board, spine faded, owner's details fly leaf. Cloth fragile at hinges and beginning to split.
2. Lord Randolph Churchill – Ln: Macmillan and Co 1906. 2 Volumes. Plates in both volumes, 23cms, original maroon cloth with gilt titles and coats of arms. Vol. I. with rubber name stamp [of H. Acton-Adams, Tipapa] and inscription on title page. Light wear to spine ends, sprinkle of foxing, and lower portion of front board of vol. II rubbed.
Provenance: Estate of John Lawford.
\$300 – \$500



- 279 Periodicals – Winston Churchill
Pearson's Magazine [2 issues] Both with articles by Winston Churchill.
January 1934 features "Will the World Swing Back to the Monarchies?" and June 1934 "Are Parliaments Obsolete?". Original colour paper covers. These articles have not been published elsewhere.
Pearson's Magazine was an influential monthly periodical which first appeared in Britain in 1896. It specialised in speculative literature, political discussion often of a socialist bent and the arts.
2. The London Magazine Exclusive, Absorbing Article on The War on Land & Sea. One issue only October 1916. Complete with pictorial paper covers, chips to spine, short tears, else VG.
Provenance: Estate of John Lawford.
\$200 – \$250

ANTARCTICA



- 280 British Antarctic Exploration
Captain Scott R.N. Commemorative portrait in dress uniform surrounded by laurels, inset views of the expedition, letter press text, 'Had we lived I should have had a tale to tell which would have stirred the heart of every Englishman'.
Abrasions, mostly to margins and crease.
Coloured lithograph print, (1914), 650 x 490mm, unframed.
Provenance: Estate of John Lawford.
\$300 – \$400

- 281 Roland Huntford [Editor]
The Amundsen Photographs
New York: The Atlantic Monthly Press [1987], 199p, illustrated throughout. 290mm, knock to bottom edge front board, DJ. VG. 2.
Herbert Ponting & Frank Hurley – 1910-1916. Antarctic Photographs. Scott, Mawson, and Shackleton Expeditions. Melbourne ND. 3.
Brian Roberts [editor] – Edward Wilson's -Birds of the Antarctic. London Blandford Press 1967. 191p, illustrated. 310mm DJ, laminate peeling.
Provenance: Estate of John Lawford.
\$60 – \$80



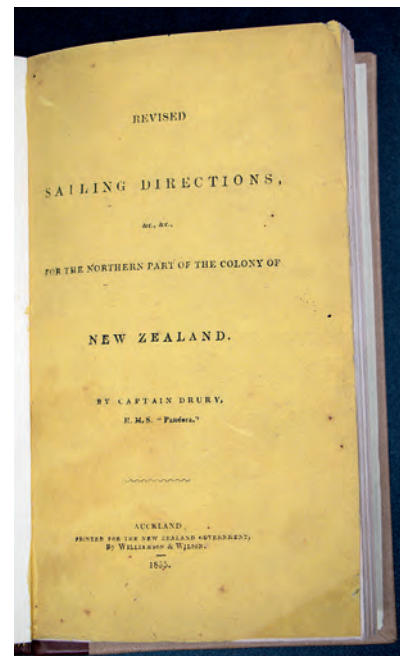
- 282 Thomas Musgrave / John I. Shillinglaw [Editor]
Castaway on the Auckland Isles:
A Narrative of the Wreck of the "Grafton", from the private journals of Capt. Thos. Musgrave, with a map and some account of the Aucklands. Melbourne: H.T. Dwight, 1865, first edition. Inscribed on title page 'Mrs H. [?] Alleyce With the affectionate regards of The Editor'. vii, 112p, fldg map of the Auckland Isles. 212mm, bound in contemporary half maroon leather, gilt title to spine, with marbled boards. VG copy. The rare Melbourne first edition.
Provenance: Estate of John Lawford.
\$500 – \$700

MARITIME – BOOKS, PAINTINGS & PRINTS

- 283 Francis Chichester [2 Signed Copies]
Gipsy Moth, Circles the World. London H & S 1967. One a special presentation edition No 377 of 500 copies, signed by the author. Bound in full leather with gilt in DJ and presentation box [taped at corners]. The other first trade edition London H & S 1967, signed on title page by author. Hard cover, blue cloth light mottling and spine faded.
Provenance: Estate of John Lawford.
\$100 – \$150
- 284 Rev John Overton Choules
The Cruise of the Steam Yacht North Star; A Narrative of the Excursion of Mr Vanderbilt's Party to England, Russia, Denmark, France, Spain, Italy, Malta, Turkey, Madeira etc. Boston: Gould and Lincoln, Date: 1854. First edition. xv, 353p, [x]l., of publisher's adverts, frontis and complete with illustrations. Lacking front free endpaper, some spasmodic spotting, generally contents clean. 205mm original green blind stamped cloth, spine faded spine ends and corners worn.
Provenance: Estate of John Lawford.
\$50 – \$100



- 285 Robert Dodd
Portrait of an East Indiaman sailing from Madras, coloured aquatint, engraved by R. Dodd, published London 1797, 370 x 530 mm, framed & mounted.
Provenance: Estate of John Lawford.
\$200 – \$300



- 286 Captain Drury
Revised Sailing Directions &c. &c. For the Northern Part of the Colony of New Zealand. by Captain Drury, H.M.S. Pandora. Auckland: Printer for the New Zealand Government by Williamson & Wilson 1855. 93p, errata at end, small neat notation on endpaper re testimonial details in Nautical Magazine [1856]. 185mm bound with the original yellow paper covers in later quarter brown leather, title label along spine and with tan cloth boards. Rare.
Fine copy with the book plate of G. & N. Ingleton front endpaper and loosely enclosed a purchase invoice from Maggs Bros London 2001.
Provenance: Estate of John Lawford.
\$1500 – \$2500
- 287 J.H. Gardiner
The Colonial Clipper Waimate 1124 Tons, built by Blumer at Sunderland 1874 as the 'Hindustan' owned by the New Zealand Shipping Company watercolour signed lower right, title inscribed on mount 360 x 530 mm, framed and mounted
Provenance: Estate of John Lawford.
\$200 – \$400

- 288 W. J. Huggins
View of Ramsgate, with Vessels in a Strong Gale making for the Harbour
Coloured aquatint, engraved by E. Duncan, published London 1826, 470 x 650 mm, framed & mounted.
Provenance: Estate of John Lawford.
\$100 – \$200

- 289 William Huggins
The South Seas Whale Fishery
coloured aquatint, engraved by T. Sutherland, published London 1825, 440 x 660mm, framed & mounted.
Provenance: Estate of John Lawford.
\$300 – \$600



- 290 Walking Stick – [Association to the sailing ship 'Boyd'].
Wooden cane with rounded knob handle inlaid with various timbers.
Sterling silver collar with engraved inscription 'Relic, Ship Boyd, taken by Māori's Whangaroa 1809'. L. 890 mm
Provenance: Estate of John Lawford.
\$600 – \$800

- 291 Alexander George Findlay
South Pacific Ocean Directory
A Directory for the Navigation of the South Pacific Ocean, with Descriptions of the Coasts, Islands, etc from the Straits of Magalhaens to Panama and those of New Zealand, Australia etc. Ln: Laurie 1884, 5th ed. 1252p, engravings and charts, lacking one chart. 255mm, original black cloth, neatly rebound with original spine strip. Includes descriptions of dangerous reefs often mention of various wrecks they have caused, islands described with excerpts from the accounts of various voyagers, current population, and other data.
Provenance: Estate of John Lawford.
\$100 – \$200

- 292 S.S. Waikato – Captain Weston [Master]
Extract from Statement of General & Particular Average. "Waikato" [s.s.]
Bound from London with a General Cargo to Dunedin [Port Chalmers] and Lyttleton and with transhipment Cargo for Timaru, Oamaru, Wellington, Napier, New Plymouth, Blenheim, Auckland, Nelson, Bluff & Invercargill and back to London with a General cargo.
Sailed from London on 4th May 1899. Tail Shaft broke 5th June, taken in tow by the 'S.S. Astouin' on 15th September [after being adrift over 3 months] and towed into Freemantle [W.A.] on the 10th October 1899. Extract for Settlement in New Zealand.
Detailed account including extracts from the desk logbook, of the ship adrift, court case, cargo and settlement details with folding tables.
Folio bound in brown cloth, with damp damage to covers paper title label front cover some losses to edges. Contents complete and mainly clean.
Provenance: Estate of John Lawford.
\$300 – \$500

NATURAL HISTORY

- 293 Antiquarian Botanical Books [2x]
1. B. Maund – The Botanic Garden; consisting of highly finished representations of hardy Ornamental Flowering Plants... London: Simpkin & Marshall ND [ca 1830's]. Unpaginated, 24 hand-coloured plates, 210mm, bound in quarter leather green cloth boards, spine faded and leather split with loss.
2. Philip Miller – The Gardeners Kalendar; Directing what Works are necessary to be performed every month in the kitchen, fruit, and pleasure gardens... London Printed for the author 1762.xv, 369p, [xi]p of index at end. Plate II missing and part of Plate I. [two complete plates]. 210mm, contemporary full calf leather cracking at front hinges, cords holding.
Provenance: Estate of John Lawford.
\$100 – \$200
- 294 Bell F. Dillon & Frederick Young Jr [2 items]
Reasons for Promoting the Cultivation of the New Zealand Flax
London: Smith Elder & Co 1842, first edition. Cover titles 34p, 4pp adverts at end, sewn. A little light foxing, else clean and VG.
Survey discussing possible commercial uses of phormium tenax with lengthy extracts from views of Fitzroy, Heaphy and Petre. Scarce.
2. The New Zealand Journal of Science – Volume II. 1884-1885. Dn [1884]. Includes Papers by Captain F.W. Hutton; In Memoriam, Hochstetter by Julius von Haast with two real photos laid on; Oology of New Zealand by T.H. Potts; The Decrease of the Maori Race by Dr Buller etc. Half leather with marbled boards, front cover detached and spine detached.
Provenance: Estate of Peter Stratford.
Epsom Trust plate
\$100 – \$150
- 295 Ross Galbreath
Walter Buller; The Reluctant Conservationist
GP Books 1989. 336p, illustrated, 240mm, hard cover, DJ, VG.
Provenance: Estate of John Lawford.
\$60 – \$80

- 296 Henry Brett – Printer & Publisher
The New Zealand Farmer and Bee and Poultry Journal
A Repository of Practical Information for Farmers, Stockbreeders, Dairymen, Horticulturists, Beekeepers and Poultry fanciers. Volume xii January – December 1892. 370mm, folio bound into quarter tan leather with cloth boards, light discolouration to cloth. VG.
\$100 – \$200

- 297 T.F. Cheeseman
Illustrations of the New Zealand Flora
Plates drawn by Miss Matilda Smith. Wellington: Govt Ptr 1914, 2 volumes. Vol. 1. 8p, [2] l., 121 l. 121 uncoloured plates. Vol. 2. [3] l., 29 l., 129 uncoloured plates, xxxiv. Sprinkle light foxing title pages, else clean. Folio, 315mm each, original green cloth, black illustration front board and gilt spine titles. Small name stamp on front endpapers, VG set.
Provenance: Estate of John Lawford.
\$150 – \$250



- 298 Gold Mining Share Certificates. [10x]
Share Certificates include:
1. The Barrier Reefs Gold mining Company 300 shares of one pound each, numbers 1651-1950. Dated 1901; 2. Waihi Consols Gold Mining Company, No Liability, No. 190 certificate for 1400 shares at Dated 1898; 3. Two certificates for the Sheridan Gold Mining Company Limited. 100 shares of one pound each numbered 69001-69100. Dated 1897 and 416 shares of one pound each 42369/42634 & 1551/1700. Dated 1897; 4. Monowai Gold Mines Limited 200 shares of one pound each. Certificate number 298. Dated 1899; 5. New Alpha Gold Mining Company, no Liability. 950 shares at 3d per share, Number 79216- 80765. Dated 1901; 6. Wonona Gold Mining Co. [No liability] 250 shares at 2/- each. Dated 1896; 7. The Murchison Gold Dredging Company, Limited. Contributing Shares, 50 Shares, Number 7851-7900. 190? date not filled in; 8. The New Zealand Crown Mines Company Ltd. 1700 shares of 4/- each. Dated 1910. NUMBERS 1-8 all made out to William Smith, Taradale.
9. The Paparoa Coal Mining Company Ordinary Share certificate 250 share of 10/- per share. Dated 1912; 10. The North British & Hawkes Bay Freezing Company Limited. 50 shares of 10 pounds each. dated 1910; NUMBERS 9 & 10 made out to Mary Smith, Napier.
Provenance: Estate of Peter Stratford
\$200 – \$300

- 299 Gold Mining Company Documents Include – 1. The Waitekauri Gold Mining Company Limited
Three reports – Two Reports of the Directors and Statement of accounts 1902 & 1904 and Proceedings at the Ordinary General Meeting 1902.
Gold was discovered here in 1875 by Daniel Leahy (Simpson, 2011). Located immediately west of the old Waitekauri claim. In 1888, the lease was taken over by E. Kersey Cooper, representing an English syndicate. It proved unpayable, and work was suspended. In 1891, work resumed, and an adit was driven, however a dispute arose over who owned the claim. Kersey Cooper won this fight, raised more finance, and continued to drive the adit until work stopped again in 1902. Operations re-started in 1904 but ceased permanently in 1912.
2. Silver gelatin photograph – Tapu Creek, Thames Goldfield. Image of the creek with a goldminer's cottage. 190 x 290mm. Another image of the creek verso.
3. New Whau Gold Mining Company [Thames] 1902 call of one halfpenny per share with letter of explanation for the Call.
4. Memorandum and Articles of Association of Talisman Consolidated Limited [1916] loosely inserted single leaf re the winding up of the company. Auckland 1921.
5. The Komata Reefs Gold Mining Company Ltd – Crushing returns for 1904.
Provenance: Estate of Peter Stratford.
\$200 – \$300

- 300 Chas Chilton
The Subantarctic Islands of New Zealand Reports on the Geo-Physics, Geology, Zoology and Botany of the Islands lying to the South of New Zealand. In two volumes. Wellington: Govt Ptr 1909. Vol.1, xxxv, 388p, [2], [823]-848p illustrations and plates [some colour].
Vol.2, [2]p, [389]-848p, illustrations, maps. General Bibliography p [808] – 822. Index in both volumes. Text appears to be free of the adhesion problems which occur in many of this edition. 284mm, dark blue cloth with gilt titles and penguin front boards, short split in front hinge of volume 1. Inside gutter pulling back of Volume 2.
Loosely enclosed map of the Antarctic and Sub-Antarctic Regions compiled for the philosophical institute of Canterbury New Zealand. March 1909. Drawn by E.N. Doyly. Colour paper map 690 x 690mm.
Provenance: Estate of John Lawford.
\$200 – \$300

- 301 John & Elizabeth Gould
Himantopus Novae Zealandiae, New Zealand Stilt
lithograph, hand coloured, impressed mark top left, does not pierce the paper. 554 x 365 mm. The Birds of Australia, vol 6, plate 251849.
Provenance: Estate of John Lawford.
\$300 – \$400

- 302 John & Elizabeth Gould
Apteryx Australis (Kiwi)
lithograph, hand coloured, 555 x 365 mm. Birds of Australia, vol 6, plate 2, 1848, sprinkle of light foxing.
Provenance: Estate of John Lawford.
\$400 – \$600

- 302A John Gould & H.C. Richter
Apteryx Owenii (Kiwi)
Proc. Zool. Soc. London Part 15, P94, [1847].
Lithograph hand coloured, 375 x 555mm.
Provenance: Estate of John Lawford
\$600 – \$800



- 303 John & Elizabeth Gould
Ramphastos Citreopygus, Lemon rumped Toucan
lithograph, hand colored, 493 x 303 mm, framed & mount. Monograph of the Family of Toucans, 1833-35.
Provenance: Estate of John Lawford.
\$600 – \$800



- 304 John Gould & G.R. Gray
Neomorpha Gouldii, (Huia)
lithograph, hand colored, 552 x 356 mm, framed & mounted. The Birds of Australia, vol 4, plate 19, 1848.
Provenance: Estate of John Lawford.
\$1500 – \$2000

- 305 John Gould & H.C. Richter
Nestor Hypopolius, Ka-ka Parrot
lithograph, hand colored, 552 x 377 mm. Supplement to The Birds of Australia, plate 58, 1869.
Provenance: Estate of John Lawford.
\$800 – \$1000

- 306 John Gould & H.C. Richter
Harpactes Reinwardti, Reinwardt's Trogon
lithograph hand coloured, 520 x 350 mm, framed & mounted. A Monograph of the family of Trogons, (1838)
Provenance: Estate of John Lawford.
\$600 – \$800

- 307 John Gould & H.C. Richter
Nestor Notabilis, Kea Parrot
lithograph, hand colored, 552 x 377 mm, Supplement to The Birds of Australia, plate 60, 1869.
Provenance: Estate of John Lawford.
\$1500 – \$2000

- 308 H. Guthrie-Smith [Association Copy] [2 Titles]
Tutira. The story of a New Zealand Sheep Station.
Edinburgh & London: Blackwood and Sons 1921, first edition. xxi, 409p, frontis, illustrations and maps. Light browning, 255mm, original blue cloth with gilt map and titles, spine discoloured and mottling. Torn DJ.
A.T. Pycrofts copy with associated clippings and original article [1898] 'Bird Life on a New Zealand Run' by H. Guthrie Smith; A Typescript inscribed by J.W. Heenan to A.T. Pycroft dated 18/5/44. 'New Zealand Greatest Book "Tutira" by H. Guthrie Smith. A talk during author's Week 1936 by J.W. Heenan.'
2. Sorrows and Joys of a New Zealand Naturalist. Dunedin: Reed 1936, number 12 of a Ltd Ed of 1000 copies. VG hardback copy in a poor DJ.
Provenance: Estate of John Lawford.
\$200 – \$300

- 309 Guthrie-Smith. H. [5 Volumes By]
Tutira, The Story of a Sheep Station. Edinburgh & London: Blackwood 1926, second edition. Blue cloth, hard cover.
2. Sorrows and Joys of a New Zealand Naturalist. Dunedin: Reed 1936, first edition. No 835 of 1000 copies signed by author. Green cloth hard cover, spine faded. 3. Mutton Birds and Other Birds. N.Z. W & T 1914. Green hard cover with gilt. 4. Birds of the Water Wood and Waste. NZ: W & T 1926. Green buckram with gilt. 5. Bird Life on Island and Shore. Blackwood and Sons 1925. Green cloth with gilt, rodent damage base of spine. Condition varies, owners name on two volumes, occasional spotting. Mostly G to VG, No 3. near fine.
Provenance: Estate of John Lawford.
\$150 – \$250

- 310 Mrs Charles Hetley
The Native Flowers of New Zealand
Illustrated in Colour. London: Sampson, Low, Marston etc 1888. In 3 parts. Part.1. 8p, [1]p, 2p l., plates 1-12, each with text. Part. II. plates 13-24 each with text. Part. III. plates 25-36 each with text. Each volume with index of plates at end. 395mm, bound in blue/grey papered boards with titles and blue cloth spines, edges worn, some silverfish abrasions to Part. I. Text and plates are mostly clean and clear.
Provenance: Estate of John Lawford.
\$500 – \$600

- 311 Mrs Charles Hetley
The Native Flowers of New Zealand Illustrated in Colour. London: Sampson, Low, Marston etc 1888. In 3 parts. Part. I. 8p, [1] p, 2p l., plates 1-12, each with text. Part. II. plates 13-24 each with text. Part. III. plates 25-36 each with text. Each volume with index of plates at end. 395mm, bound in blue/grey papered boards all are worn and disbound. Plates are loose, and clean a small sprinkle of browning on endpapers, and edges of text.
Provenance: Estate of John Lawford.
\$200 – \$400
- 312 T Kirk
The Forest Flora of New Zealand Wellington: Govt Ptr 1889. xv, 345p, numerous plates, light foxing, and some browning. 340mm, new endpapers, bound in blind stamped cloth, gilt titles. VG.
Provenance: Estate of John Lawford.
\$80 – \$120
- 313 John Leonard Knapp
The Journal of a Naturalist London: John Murray 1829. xii, 403p, plates on 10 leaves at end, contemporary inscription on title page, folding frontis, 190mm, bound in contemporary half leather with marble boards, rubbing to boards and light fading.
Provenance: Estate of John Lawford.
\$100 – \$200
- 314 Moa Bone
Large bone with original label attached partly decipherable 'Moa bone found on the Falconer property Central Otago during excavations in the ?1930's'. L. 800 mm
Provenance: Estate of John Lawford.
\$400 – \$600
- 315 Geoff Norman
Buller's Birds of New Zealand The complete works of J.G. Keulemans. Wellington: Te Papa Press 2012. xii, 246p, complete with colour plates from the first and, second editions and the Supplements. 370mm, bound in terracotta cloth, all edge gilt, and in slip case VG.
Provenance: Estate of John Lawford.
\$150 – \$200
- 316 Sword Fish Spike
Mounted on large oval painted wooden plaque. Brass label engraved 'This fish is the largest Broadbill caught in New Zealand in the past twenty years. Angler Bill Hall. Weight 533 lbs. Date 10 Feb. 1980. "Lelani II". L. 1230mm
Provenance: Estate of John Lawford.
\$300 – \$500
- 317 Dr Ferdinand von Hochstetter
New Zealand: Its Physical Geography, Geology, and Natural History With Special Reference to the Results of Government Expeditions in the Provinces of Auckland and Nelson. Stuttgart: J.G. Cotta 1867. xvi, 515p, colour and black & white engravings and wood engravings in text, 2 fldg maps at end. Some light browning and spotting to colour plates else contents generally clean. 270mm, original blind stamped green cloth with gilt vignette front board and gilt titles. A very good copy.
Provenance: Estate of John Lawford.
\$400 – \$600
- 318 Dr Ferdinand von Hochstetter
New Zealand: Its Physical Geography, Geology, and Natural History With Special Reference to the Results of Government Expeditions in the Provinces of Auckland and Nelson. Stuttgart: J.G. Cotta 1867. xvi, 515p, colour and black & white engravings and wood engravings in text, 2 fldg maps at end. Browning and spotting to colour plates else contents generally clean. 270mm, original blind stamped green cloth with gilt vignette front board rebacked with green cloth and original spine strip laid on.
Provenance: Estate of John Lawford.
\$300 – \$400
- 319 Whale Bone Rib
A large 19th century whale bone rib L. 1470mm overall.
Provenance: Estate of John Lawford.
\$800 – \$1000

SPORT & RECREATION

- 320 Zane Grey
Tales of The Angler's Eldorado New York & London: Harper & Brothers 1926, first edition with the correct G-A code on copyright page. viii, [1] l., 228p, complete with plates. Pictorial endpapers, a little very light discolouration, 270mm, bound in dark blue cloth gilt titles, some mottling VG.
Provenance: Estate of John Lawford.
\$100 – \$200

ANTIQUARIAN BOOKS

- 321 James Henry Beardsley Aubrey et al
The Yellow Book 13 volumes. Ln: Elkin Mathews, John Lane, Copeland & Day, April 1894 to January 1897, lacks April 1897 to make complete set. [2 editions of Vol. vi July 1895] All bound in original decorative yellow cloth with discoloured spines, and chips at spine ends, some with old paper library labels on EPs, Sprinkle of foxing throughout. The Yellow book was distinguished by its diverse and exceptional list of contributors including works by then relatively unknowns such as H.G. Wells, John Buchan and Yeats. Aubrey Beardsley was the first art director and he obtained works by notable artists such as Walter Crane, John Singer Sargent, Beerbohm etc.
Provenance: Estate of John Lawford.
\$400 – \$600
- 322 John & William Langhorne
Plutarch's Lives Translated from the Greek: with notes critical and historical and a new life of Plutarch. London: T. Longman, C Dilly etc, 1795, sixth edition in six volumes. Frontis in each volume. Some pencil notations, with the name A. Donnelly in each books light browning. Rebacked in style, brown leather, title labels in the original full leather boards. Not collated, appear to be complete.
Provenance: Estate of John Lawford.
\$100 – \$200



- 323 Miniature Dictionary
The Book of Nouns, or Things that May be Seen This edition has three imprints, title page, London: printed by Darton and Harvey, Grace-church Street 1800 [or 1806, difficult to decipher], p66 Published by Darton and Harvey, No 55, Gracechurch Street, London the 25th of March 1801 and on final page with no date. 128pp, 60 full page woodcut illustrations some have been lightly coloured. Mostly comprises single words with occasional short phrases, section after 112 with Names of People, Trades etc. Rebound [years ago] in cotton cloth, leather can be seen beneath at spine ends, cloth faded. Appears to be complete.
\$800 – \$1000

DECORATIVE ART



- 324 An English silver coffee pot baluster-shaped form, boxwood handle, pineapple finial to lid London, badly rubbed marks W. 900g approx.
Provenance: Estate of John Lawford.
\$1000 – \$1500
- 325 An English silver coffee pot with Rococo chasing to the lower body, ebony handle, acorn finial to lid W. 650g approx.
Provenance: Estate of John Lawford.
\$800 – \$1200

326 A large silver lidded hot water jug
London, 1830
H. 250mm, W. 940g
Provenance: Estate of John Lawford.
\$1000 – \$1500

327 A three-piece silver tea set
London, 1823, made by Emes and Barnard
with floral decorated borders, on feet with
fluted base
W. 1800g
Provenance: Estate of John Lawford.
\$2000 – \$3000

328 A pair of silver dished plates
with decorative borders, armorial crest to
edge, London, 1839
D. 260mm, W. 1240g approx.
Provenance: Estate of John Lawford.
\$1250 – \$1750



329 A large two-handled silver tray of plain
Georgian style
London, 1915, made by Carrington and co.
London
with scalloped corners and ridged border
on four feet
the tray is inscribed 'Presented to Major S.
Callaghan, seventeenth lancers on leaving
the regiment by his brother officers, 20
March 1916', signed by the officers
610 x 460mm, W. 4.725kg
Provenance: Estate of John Lawford.
\$4000 – \$7000



330 A rare Georgian Period Anglo-Indian silver
teapot
Hamilton and co. Calcutta, & LB and co.
Calcutta, C. 1820
melon-shaped with leaf and scroll
decorations, scroll feet, pumpkin finial
It was buried along with other items during
the siege of Lucknow, it was then uncovered
and returned to England. Purchased from
Cordy's in 2002.
W. 1000g approx.
Provenance: Estate of John Lawford.
\$1500 – \$2500



331 A silver scroll handled and lidded bowl
Calcutta, made by Hamilton and co., with
shell and scroll base, with floral finial
inscribed 'to Mr. G. Hoogan, in great for
recognition for many years as apothecary to
the 52nd Light Infantry Regiment'
Provenance: Estate of John Lawford.
\$300 – \$500

332 A small silver waiter
Calcutta, made by Hamilton and co.
with gadrooned border on three feet
D. 195mm
Provenance: Estate of John Lawford.
\$150 – \$250

333 A silver christening mug
Calcutta, made by Cooke and Kelvey
Calcutta
engraved decoration, inscribed 'HWMC,
1870'
Provenance: Estate of John Lawford.
\$150 – \$250

334 A Georgian cream jug
London, badly rubbed marks
H. 110mm, W. 140gm approx.
Provenance: Estate of John Lawford.
\$100 – \$150



335 A Georgian waiter
sterling silver, on three feet
London marks rubbed
D. 165mm; W. 220gms approx.
Provenance: Estate of John Lawford.
\$150 – \$250

336 A silver sauce boat
on three feet with flying handle, London,
1898
W. 280g
Provenance: Estate of John Lawford.
\$250 – \$350

337 A small sterling silver two-handle bowl
Birmingham, 1934
W. 100g approx.
along with silver bowl and three feet, badly
rubbed marks
W. 200g approx.
Provenance: Estate of John Lawford.
\$300 – \$400

338 Four silver-plated dished plates
with gadroon-shaped borders
D. 275mm
Provenance: Estate of John Lawford.
\$300 – \$500

339 A silver toast rack
London, 1881
along with a silver Vesta case
Birmingham, 1917
W. 145g approx.
Provenance: Estate of John Lawford.
\$150 – \$250

340 A silver meat skewer
London, 1812, made by Josiah and George
Piercy
W. 80g approx.
Provenance: Estate of John Lawford.
\$100 – \$150

341 A silver meat skewer
London, 1802, made by William Leley and
William Fern
W. 70g
Provenance: Estate of John Lawford.
\$100 – \$150

342 An engraved silver-plated cup
1902-1903
inscribed 'Home Bay Sailing Club
Championship Cup'
Provenance: Estate of John Lawford.
\$100 – \$150

343 A silver sugar caster
Birmingham, 1936
H. 175mm, W. 100g approx.
Provenance: Estate of John Lawford.
\$100 – \$150

344 Four Georgian silver Old English serving
spoons
London, 1835, made by Jonathan Hayne
W. 260g approx.
Provenance: Estate of John Lawford.
\$250 – \$350

345 Six Georgian silver dessert spoons
London, 1822, made by Jonathan Hayne
W. 180g
Provenance: Estate of John Lawford.
\$200 – \$300

346 Eight Georgian and Victorian silver dessert
spoons
London, mixed dates and makers
W. 300g approx.
Provenance: Estate of John Lawford.
\$300 – \$500

347 Seven Georgian silver teaspoons
mixed dates and makers
W. 140g approx.
Provenance: Estate of John Lawford.
\$125 – \$200

348 Six silver Fiddle pattern serving spoons
Glasgow, 1853, armorial to terminal
W. 440g approx.
Provenance: Estate of John Lawford.
\$400 – \$600

349 A pair of silver Fiddle pattern sauce ladles
London, 1818, made by Sarah and John Blake
W. 140g approx.
Provenance: Estate of John Lawford.
\$150 – \$250

350 A pair of silver Fiddle pattern salt spoons
London, 1845
W. 20g
Provenance: Estate of John Lawford.
\$50 – \$70

- 351 Nine silver Fiddle pattern dessert forks
London, mixed dates and makers
W. 400g approx.
Provenance: Estate of John Lawford.
\$350 – \$450
- 352 Nine silver Fiddle pattern dessert forks
mixed dates and makers
W. 500g
Provenance: Estate of John Lawford.
\$400 – \$600
- 353 Nine silver Fiddle pattern dinner forks
London and Dublin, mixed dates and makers
W. 640g approx.
Provenance: Estate of John Lawford.
\$600 – \$800
- 354 Six Bright Cut silver teaspoons
London, 1789, made by George Gray
W. 80g approx.
Provenance: Estate of John Lawford.
\$100 – \$150



- 355 Twelve silver Kings Honeysuckle pattern
dessert spoons
11 hallmarked London 1839, 1 London 1850
armorial to terminal
W. 1000g
Provenance: Estate of John Lawford.
\$1000 – \$1500
- 356 Six silver Kings Honeysuckle pattern serving
spoons
London, 1839
W. 700g
Provenance: Estate of John Lawford.
\$700 – \$1000
- 357 Six silver Kings Honeysuckle pattern serving
spoons
London, 1839
W. 700g
Provenance: Estate of John Lawford.
\$800 – \$1000
- 358 Ten silver Kings Honeysuckle pattern dessert
forks
London, 1839
armorial to terminal
W. 820g
Provenance: Estate of John Lawford.
\$800 – \$1200
- 359 Ten Victorian silver Kings pattern dinner
forks
London, mixed dates and makers
armorial to terminal
W. 1000g
Provenance: Estate of John Lawford.
\$1000 – \$1500
- 360 Nine silver Kings pattern dinner forks
7 hallmarked London 1882, 2 hallmarked
London 1871
armorial to terminal
W. 900g
Provenance: Estate of John Lawford.
\$900 – \$1500

- 361 Eight silver Kings pattern dessert spoons
7 hallmarked London 1838, 1 London 1810
armorial to terminal
W. 500g
Provenance: Estate of John Lawford.
\$500 – \$800
- 362 A pair of silver Kings pattern sauce ladles
London, 1858, made by George Angel
armorial to terminal
W. 190g
Provenance: Estate of John Lawford.
\$200 – \$300
- 363 Six Victorian silver Kings pattern teaspoons
London, mixed dates and makers
armorial to terminal
W. 200g
Provenance: Estate of John Lawford.
\$200 – \$300
- 364 Eight Georgian silver Kings pattern
teaspoons
Dublin, mixed dates and makers
armorial to terminal
W. 220g
Provenance: Estate of John Lawford.
\$250 – \$350
- 365 Six Victorian silver Kings pattern serving
spoons
London, mixed dates and makers
W. 600g
Provenance: Estate of John Lawford.
\$600 – \$900
- 366 Nine silver Kings pattern dessert forks
London, mixed dates and makers
W. 520g
Provenance: Estate of John Lawford.
\$500 – \$800
- 367 Twelve Ashberry stainless steel bladed
dinner knives
with Kings pattern silver plated handles
Provenance: Estate of John Lawford.
\$100 – \$200
- 368 Twelve Ashberry stainless steel bladed
dessert knives
with Kings pattern silver plated handles
Provenance: Estate of John Lawford.
\$100 – \$200
- 369 Eight steel-bladed dinner knives
with silver Kings pattern handles, badly
rubbed hallmarks
Provenance: Estate of John Lawford.
\$150 – \$250
- 370 Eight steel-bladed dessert knives
with silver Kings pattern handles, badly
rubbed hallmarks
Provenance: Estate of John Lawford.
\$150 – \$250
- 371 Eight 19th-century dessert plates
porcelain, royal blue border and gold
decoration, with handpainted floral
centerpieces
D. 225mm
Provenance: Estate of John Lawford.
\$150 – \$300



- 372 An extremely large Flight Barr & Barr
Worcester dinner set
C. 1825, with the Bulkeley family crest, with
a shaped rim, blue celeste border and gold
decoration
102 pieces, comprising 45 dinner plates
(D. 270mm), 20 side plates (D. 220mm), 17
soup bowls (D. 260mm), 4 small ashets (L.
310mm), 2 medium ashets (L. 370mm), 2
large ashets (410mm), 2 very large ashets (L.
460mm & L. 570mm)
stamped Flight, Barr & Barr to underside
Provenance: Estate of John Lawford.
\$1500 – \$2500



- 373 A large 19th-century Spode meat ashtray
Indian sporting series: ceramic, decorated
with "shooting a leopard" pattern,
small chip to bottom edge.
520 x 400mm
Provenance: Estate of John Lawford.
\$500 – \$800
- 374 A blue and white Chinese jar
ceramic, converted into table lamp
H. 260mm
Provenance: Estate of John Lawford.
\$100 – \$200
- 375 A blue and white Chinese ginger jar
ceramic, with a pierced wooden lid (some
losses) & two decorative panels
Provenance: Estate of John Lawford.
\$100 – \$200
- 376 Four similar Chinese blue and white
decorated plates
ceramics, probably 19th century
D. 270mm each
Provenance: Estate of John Lawford.
\$600 – \$900
- 377 Six early-20th-century Chinese blue and
white lidded teapots
ceramics, along with one similar tea caddy
Various sizes
Provenance: Estate of John Lawford.
\$200 – \$400
- 378 A pair of early-20th-century Imari jardinière
ceramics, on short feet, decorated with Imari
pattern
H. 285mm & H. 295mm, D. 345mm each
Provenance: Estate of John Lawford.
\$400 – \$700



- 379 A late-18th-century French Trumeau mirror with a Chinese Chippendale panel in the top section and an original mirror glass to the bottom section, the decorative frame has a pale green background
1600 x 1050mm
Provenance: Estate of John Lawford.
\$1200 – \$1800
- 380 A 19th-century mahogany frame pier glass mirror with fluted side pillars
H. 1150mm, W. 680mm
Provenance: Estate of John Lawford.
\$300 – \$500
- 381 A pair of 18th-century walnut and gilt mirrors with fret-cut decoration
H. 960mm, W. 490mm
Provenance: Estate of John Lawford.
\$1000 – \$1500
- 382 A large old dinner gong hung on two tusks on a substantial mahogany base, with plaque inscribed 'Grand Hotel Auckland'
Provenance: Estate of John Lawford.
\$500 – \$800
- 383 A 19th-century wooden lidded chest on turned front legs stand, with decorative pierced brass corners, escutcheon and carrying handles, with presentation plates inscribed 'to Air Chief Marshall, to Sir Keith Park by Sir Ernest Davies, mayor of Auckland'
H. 600mm, L. 1100mm, W. 440mm
Provenance: Estate of John Lawford.
\$500 – \$700
- 384 A 19th-century mahogany campaign chest in 2 parts, brass corners and straps, with flush brass handles, on original feet
H. 1010mm, L. 915mm, D. 450mm
Provenance: Estate of John Lawford.
\$3500 – \$4500
- 385 A 19th-century padouk wood travelling chest in 2 parts, with iron carrying side handles, flush wooden turn knobs on bun feet
H. 1000mm, L. 930mm, D. 460mm
Provenance: Estate of John Lawford.
\$2000 – \$3000
- 386 A Board of Ordnance gunpowder keg Queen Victoria, Land Wars Period
A rare Board of Ordnance Cast Iron Gunpowder Keg, dated 1855 with front facing Board of Ordnance Armorial, date and 'Broad Arrow' mark.
This type of keg was used for storing gun powder at British forts and barracks through out the British colonies. A rare example from the New Zealand 1860s Land Wars period. The keg would have been left behind by the British Regiments when they were withdrawn from New Zealand in 1869 – 1870. 990 x 690 mm, depth 610 mm. Few examples are recorded as surviving worldwide.
Provenance: Estate of John Lawford.
\$800 – \$1200
- 387 An old cast iron decorative fire back depicting a scene in relief
590 x 590mm
Provenance: Estate of John Lawford.
\$400 – \$700
- 388 A carved marble figure depicting an Asian woman
H. 280mm, L. 420mm
Provenance: Estate of John Lawford.
\$300 – \$500
- 389 A carved marble figure of a young woman, on a low plinth
H. 1200mm
Provenance: Estate of John Lawford.
\$1000 – \$1500
- 390 A Danish gilt bronze model of a female nude figure
After Jens Jacob Bregne
H. 970mm, W. 230mm, D. 230mm
Provenance: Estate of John Lawford.
\$2000 – \$3000
- 391 A kneeling lead figure of a young girl on a circular base
H. 680mm
Provenance: Estate of John Lawford.
\$400 – \$700
- 392 A composite stone figure of a young woman
H. 1280mm
Provenance: Estate of John Lawford.
\$600 – \$900
- 393 A large and heavy pair of composite stone sphinx indistinctly signed Croggon. William Croggon married the daughter of Eleanor Coade who ran the famous Coade stoneworks in Lambeth, London
H. 860mm, L. 1050mm
Provenance: Estate of John Lawford.
\$2500 – \$4500
- 394 A pair of lead planters with decorated side panels, lobed tops
H. 370mm, W. 300mm, D. 300mm
Provenance: Estate of John Lawford.
\$250 – \$450
- 395 An old concrete bird bath depicting figure of a child holding a scallop shell (AF), on a decorative square base
H. 1250mm, W. 370mm
Provenance: Estate of John Lawford.
\$400 – \$700
- 396 A late-19th-century cast iron garden roller with decorative pulling handles
Provenance: Estate of John Lawford.
\$200 – \$300
- 397 A pair of cast iron urns on fixed square plinths, with decorative top rims
H. 1000mm, D. 625mm
Provenance: Estate of John Lawford.
\$600 – \$900
- 398 J. Granville
Two-gallon stoneware jar
Wanganui and Waverley, with tap hole
H. 340mm
Provenance: Estate of John Lawford.
\$80 – \$150
- 399 A E Kemp
Two-gallon stoneware jar
Gore, with pictorial elephant
H. 340mm
Provenance: Estate of John Lawford.
\$200 – \$300
- 400 Thomson Lewis and Co.
Two-gallon stoneware jar
Wellington, Petone, Wanganui and Levin, with tap hole
H. 340mm
Provenance: Estate of John Lawford.
\$80 – \$150

- 401 Sharp Bros.
Two-gallon stoneware jar
Hands Across the Sea, with tap hole
H. 340mm
Provenance: Estate of John Lawford.
\$100 – \$150
- 402 Wm Handley
Two-gallon stoneware jar
Auckland, with tap
H. 340mm
Provenance: Estate of John Lawford.
\$100 – \$150
- 403 Dixons
Two-gallon stoneware jar
Palmerston North, with tap hole
H. 340mm
Provenance: Estate of John Lawford.
\$100 – \$150
- 404 R Williams and Co.
Two-gallon stoneware jar
Kawatiri, Westport, with tap
H. 340mm
Provenance: Estate of John Lawford.
\$120 – \$180
- 405 WaiWai Mineral Water Co.
Two-gallon stoneware jar
Stanley Street, Auckland, with tap
H. 340mm
Provenance: Estate of John Lawford.
\$120 – \$180
- 406 Nielson Vickers and Co.
Two-gallon stoneware jar
Dunedin
H. 340mm
Provenance: Estate of John Lawford.
\$80 – \$120
- 407 Huia Aerated Water Co.
Two-gallon stoneware jar
Dannevirke, Masterton, with pictorial Huia
bird
H. 340mm
Provenance: Estate of John Lawford.
\$120 – \$180
- 408 An antique Tole Ware tray
painted central scene with inscription
'Brotherhood in Labour', decorative border,
cut out handle either side
780 x 560mm
Provenance: Estate of John Lawford.
\$300 – \$400
- 409 A 19th-century English brown tole-painted
tea can
converted into table lamp, with large graphic
number 17 on its body
maker's plate Parnall & Sons Bristol
H. 480mm
Provenance: Estate of John Lawford.
\$500 – \$800
- 410 A green tole tea can
converted into table lamp, with large graphic
number 14 on its body
H. 480mm
Provenance: Estate of John Lawford.
\$400 – \$700
- 411 An early-20th-century enamel sign
enamel and steel, plume motor spirit sign,
some damage to borders
380 x 650mm
Provenance: Estate of John Lawford.
\$300 – \$500
- 412 A mid-century enamel post-office letterbox
sign
enamel, metal
inscribed ER
300 x 355mm
Provenance: Estate of John Lawford.
\$100 – \$200
- 413 A Victorian door knocker & central knob
the knocker in polished brass and the knob in
unpolished brass, 19th century
L. 190mm (knocker)
Provenance: Estate of John Lawford.
\$150 – \$250
- 414 Three late-19th-century quill boxes
ebony and porcupine, from Ceylon, some
losses to each box
Various sizes
Provenance: Estate of John Lawford.
\$300 – \$500
- 415 A 19th-century ebony and quill Ceylonese
vide-poche
ebony and quill
Provenance: Estate of John Lawford.
\$200 – \$400
- 416 A decorative Portuguese mask
carved wood, of an angel with spread wings
W. 930mm
Provenance: Estate of John Lawford.
\$400 – \$700
- 417 A pair of mid-19th-century Staffordshire
milkman & milkmaid figures
painted and glazed ceramics, milkmaid
holding a piggie
H. 210mm
Provenance: Estate of John Lawford.
\$400 – \$700
- 418 Three late-18th-century English Toby jugs
ceramics, some chips to rims
H. 240mm
Provenance: Estate of John Lawford.
\$250 – \$450
- 419 A 19th-century Sunderland lustre jug
ceramic, Crimea war, inscribed "May they
ever be united"
H. 140mm
Provenance: Estate of John Lawford.
\$250 – \$450
- 420 A late-19th-century glass celery veggie
glass with etched decoration
H. 240mm
Provenance: Estate of John Lawford.
\$80 – \$150
- 421 Two Victorian green glass dump
paperweights
glass, 19th century
H. 120mm & H. 140mm
Provenance: Estate of John Lawford.
\$100 – \$200
- 422 Three Victorian clear glass dump
paperweights
glass, 19th century
H. 100mm, H. 115mm, H. 130mm
Provenance: Estate of John Lawford.
\$200 – \$400
- 423 A Victorian-type framed shell mosaic picture
folk art, in octagonal frame, some loose
shells
D. 650mm
Provenance: Estate of John Lawford.
\$200 – \$400
- 424 A fine collection of vintage seashells
Provenance: Estate of John Lawford.
\$1000 – \$1500
- 425 An antique turtle shell
some losses
H. 650mm
Provenance: Estate of John Lawford.
\$200 – \$400
- 426 A zebra skin
220 x 700mm
Provenance: Estate of John Lawford.
\$200 – \$400
- 427 A zebra skin
Provenance: Estate of John Lawford.
\$200 – \$400
- 428 A 19th-century South Iranian Qashqai rug
hand-spun wool pile, typically fine Qashqai
weaving
1750 x 1600mm
Provenance: Estate of John Lawford.
\$1200 – \$1800
- 429 An early-20th-century Chinese rug
cotton warp & weft, woollen pile, hand-
knotted, pink ground with Chinese lantern in
ivory blue and green
210 x 1250mm
Provenance: Estate of John Lawford.
\$250 – \$450
- 430 An antique Kazakh rug
hand-spun woollen pile, featuring large
geometric motifs, some distress
1100 x 1600mm
Provenance: Estate of John Lawford.
\$200 – \$400
- 431 A 20th-century Afghan rug
woollen pile, hand-knotted, featuring three
significant gulls in ivory and orange on a
terracotta field
3750 x 1050mm
Provenance: Estate of John Lawford.
\$300 – \$500
- 432 An early-20th-century Afghan saddle bag
hand-woven with hand-spun wool
1400 x 675mm
Provenance: Estate of John Lawford.
\$150 – \$250



Conditions of sale

PLEASE NOTE: it is assumed that all bidders at auction have read and agreed to the conditions described on this page. Art+Object directors are available during the auction viewing to clarify any questions you may have.

1. **REGISTRATION:** Only registered bidders may bid at auction. You are required to complete a bidding card or absentee bidding form prior to the auction giving your correct name, address and telephone contact and supplementary information such as email addresses that you may wish to supply to Art+Object.
2. **BIDDING:** The highest bidder will be the purchaser subject to the auctioneer accepting the winning bid and any vendor's reserve having been reached. The auctioneer has the right to refuse any bid. If this takes place or in the event of a dispute the auctioneer may call for bids at the previous lowest bid and proceed from this point. Bids advance at sums decreed by the auctioneer unless signaled otherwise by the auctioneer. No bids may be retracted. The auctioneer retains the right to bid on behalf of the vendor up to the reserve figure.
3. **RESERVE:** Lots are offered and sold subject to the vendor's reserve price being met.
4. **Lots offered and sold as described and viewed:** Art+Object makes all attempts to accurately describe and catalogue lots offered for sale. Notwithstanding this neither the vendor nor Art+Object accepts any liability for errors of description or faults and imperfections whether described in writing or verbally. This applies to questions of authenticity and quality of the item. Buyers are deemed to have inspected the item thoroughly and proceed on their own judgment. The act of bidding is agreed by the buyer to be an indication that they are satisfied on all counts regarding condition and authenticity.
5. **BUYERS PREMIUM:** The purchaser by bidding acknowledges their acceptance of a buyers premium of 20% + GST to be added to the hammer price in the event of a successful sale at auction.
6. **ART+OBJECT IS AN AGENT FOR A VENDOR:** A+O has the right to conduct the sale of an item on behalf of a vendor. This may include withdrawing an item from sale for any reason.
7. **PAYMENT:** Successful bidders are required to make full payment immediately post

sale – being either the day of the sale or the following day. If for any reason payment is delayed then a 20% deposit is required immediately and the balance to 100% required within 3 working days of the sale date. We accept payment via Eftpos, cash (under \$5000.00) and direct credit. Visa and MasterCard credit cards are accepted, however a surcharge of 2.5% will be added. Payments over \$10,000.00 must be made by direct credit to our bank account. Our bank details for deposits are 12-3107-0062934-00. Please use your buyer number as transaction reference. Please refer to point 7 of the Conditions of Sale in the catalogue for a detailed description of payment terms.

8. **FAILURE TO MAKE PAYMENT:** If a purchaser fails to make payment as outlined in point 7 above Art+Object may without any advice to the purchaser exercise its right to: a) rescind or stop the sale, b) re offer the lot for sale to an underbidder or at auction. Art+Object reserves the right to pursue the purchaser for any difference in sale proceeds if this course of action is chosen. c) to pursue legal remedy for breach of contract.
9. **COLLECTION OF GOODS:** Purchased items are to be removed from Art+Object premises immediately after payment or clearance of cheques. Absentee bidders must make provision for the uplifting of purchased items (see instructions on the facing page).
10. **BIDDERS OBLIGATIONS:** The act of bidding means all bidders acknowledge that they are personally responsible for payment if they are the successful bidder. This includes all registered absentee or telephone bidders. Bidders acting as an agent for a third party must obtain written authority from Art+Object and provide written instructions from any represented party and their express commitment to pay all funds relating to a successful bid by their nominated agent.
11. **BIDS UNDER RESERVE & HIGHEST SUBJECT BIDS:** When the highest bid is below the vendor's reserve this work may be announced by the auctioneer as sold 'subject to vendor's authority' or some similar phrase. The effect of this announcement is to signify that the highest bidder will be the purchaser at the bid price if the vendor accepts this price. If this highest bid is accepted then the purchaser has entered a contract to purchase the item at the bid price plus any relevant buyers premium.

Important advice for buyers

The following information does not form part of the conditions of sale, however buyers, particularly first time bidders are recommended to read these notes.

- A. **Bidding at auction:** Please ensure your instructions to the auctioneer are clear and easily understood. It is well to understand that during a busy sale with multiple bidders the auctioneer may not be able to see all bids at all times. It is recommended that you raise your bidding number clearly and without hesitation. If your bid is made in error or you have misunderstood the bidding level please advise the auctioneer immediately of your error – prior to the hammer falling. Please note that if you have made a bid and the hammer has fallen and you are the highest bidder you have entered a binding contract to purchase an item at the bid price. New bidders in particular are advised to make themselves known to the sale auctioneer who will assist you with any questions about the conduct of the auction.
- B. **ABSENTEE BIDDING:** Art+Object welcomes absentee bids once the necessary authority has been completed and lodged with Art+Object. A+O will do all it can to ensure bids are lodged on your behalf but accepts no liability for failure to carry out these bids. See the Absentee bidding form in this catalogue for information on lodging absentee bids. These are accepted up to 2 hours prior to the published auction commencement.
- C. **TELEPHONE BIDS:** The same conditions apply to telephone bids. It is highly preferable to bid over a landline as the vagaries of cellphone connections may result in disappointment. You will be telephoned prior to your indicated lot arising in the catalogue order. If the phone is engaged or connection impossible the sale will proceed without your bidding. At times during an auction the bidding can be frenetic so you need to be sure you give clear instructions to the person executing your bids. The auctioneer will endeavour to cater to the requirements of phone bidders but cannot wait for a phone bid so your prompt participation is requested.
- D. **NEW ZEALAND DOLLARS:** All estimates in this catalogue are in New Zealand dollars. The amount to be paid by successful bidders on the payment date is the New Zealand dollar amount stated on the purchaser invoice. Exchange rate variations are at the risk of the purchaser.

Absentee Bid Form / Phone Bid Form (live auction only)

Auction No. 191
The Collection of John Elliot Lawford
(1933–2020)

Live auction (lots 1–94):
Tuesday 5 December 2023 at 2.00pm
Online auction (lots 95–432):
Tuesday 5 December 2023 from 5.00pm
at live.artandobject.co.nz

This completed and signed form authorises Art+Object to bid on my behalf at the above mentioned auction for the following lots up to prices indicated below. These bids are to be executed at the lowest price levels possible.

I understand that if successful I will purchase the lot or lots at or below the prices listed on this form and the listed buyers premium for this sale (20%) and GST on the buyers premium. I warrant also that I have read and understood and agree to comply with the conditions of sale as printed in the catalogue.

Lot no.	Lot Description	Bid maximum in New Zealand dollars (for absentee bids only)
_____	_____	_____
_____	_____	_____
_____	_____	_____
_____	_____	_____
_____	_____	_____
_____	_____	_____
_____	_____	_____

Payment and Delivery

Art+Object will advise me as soon as is practical that I am the successful bidder of the lot or lots described above.

I agree to pay immediately on receipt of this advice. Payment will be by Eftpos, cash (under \$5000.00) or direct credit. I understand that there is a 2.5% surcharge for payment by Visa or MasterCard credit cards. I understand that payments over \$10,000.00 must be made by direct credit to Art+Object's bank account as shown on the invoice.

I will arrange for collection or dispatch of my purchases. If Art+Object is instructed by me to arrange for packing and dispatch of goods I agree to pay any costs incurred by Art+Object. Note: Art+Object requests that these shipping arrangements are made prior to the auction date to ensure prompt delivery processing.

Please indicate as appropriate by ticking the box:

Absentee Bid

Phone Bid (live auction only)

Mr/Mrs/Ms:

First Name: _____ Surname: _____

Address: _____

Home Phone: _____ Mobile: _____

Business Phone: _____ Email: _____

Signed as agreed: _____

To register for Absentee Bidding this form must be lodged with Art+Object by 2pm on the day of the published sale time in one of three ways:

1. Email a printed, signed and scanned form to Art+Object: info@artandobject.co.nz
2. Fax a completed form to Art+Object: +64 9 354 4645
3. Post a form to: Art+Object, PO Box 68345 Wellesley Street, Auckland 1141, New Zealand

LIVE

Historic Art
1 – 50

Māori Artifacts
51 – 78

Rare Books
79 – 94

ONLINE

Regional History
95 – 101

New Zealand History
102 – 126

New Zealand Company
127 – 130

Exploration & Pacific – Books, Paintings & Prints
131 – 143

Military
144 – 151

Historic Documents
152 – 153

Māori History
154 – 165

Māori Printings
166 – 170

Māori & Oceanic Artifacts
171 – 204

Maps
205 – 220

Historic New Zealand Art & Prints
221 – 233

Art & Engravings
234 – 248

Photography
249 – 253

Autographs & Stamps
254 – 272

Churchill
273 – 279

Antarctica
280 – 282

Maritime – Books, Paintings & Prints
283 – 292

Natural History
293 – 319

Sport & Recreation
320

Antiquarian Books
321 – 323

Decorative Art
324 – 432

Index



05DEC23