

04.12.24



- 39 Len Castle, Large sedge vase, \$700 – \$1000
- 7 Barry Brickell, Sculptural vase, \$1500 – \$2500
- 45 Len Castle, Large and impressive Discoid vase, \$3000 – \$5000
- 49 Len Castle, Large footed bowl, \$2000 – \$3000
- 38 Len Castle, Square section bottle vase, \$2000 – \$3000

ART+OBJECT

3 Abbey Street
Newton
Auckland 1010

PO Box 68345
Wellesley Street
Auckland 1141

Tel +64 9 354 4646
Free 0800 806 001
Fax +64 9 354 4645
info@artandobject.co.nz
artandobject.co.nz

instagram: @artandobject
facebook: Art+Object
youtube: ArtandObject

Taranaki Heitiki with Mussell Shell Eyes
gelatin silver archival hand print, edition of 5 (2002)
565 x 430mm
\$7500 – \$12 000



The Rae and Peter Aimer Studio Pottery Collection & New Collectors Art

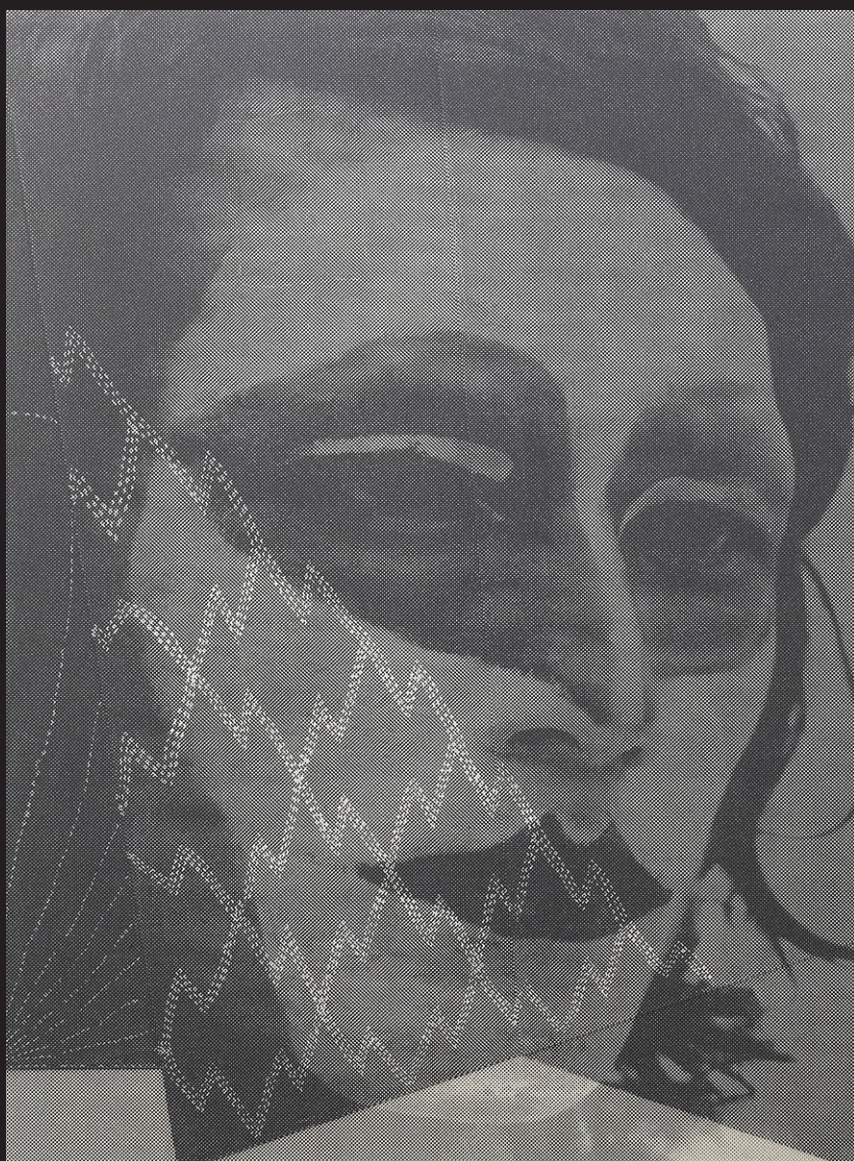
Online Auction:

Closes

Wednesday 4 December
from 6.00pm

live.artandobject.co.nz

Untitled
silkscreen print on paper
collage, edition of 45
560 x 420mm
\$1000 – \$2000



Viewing:

3 Abbey Street
Newton, Auckland

Friday 29 November
Saturday 30 November
Sunday 1 December
Monday 2 December
Tuesday 3 December
Wednesday 4 December

9.00am – 5.00pm
11.00am – 4.00pm
11.00am – 4.00pm
9.00am – 5.00pm
9.00am – 5.00pm
9.00am – 5.00pm

The Rae and Peter Aimer Studio Pottery Collection

Rae Aimer developed an early interest in pottery, together with architecture and other art forms, but it was pottery that became her major interest. She spent a year at Auckland Teacher's College where Len Castle and others were teaching, and undoubtedly encountered other potters. In the early 1960's Rae took evening classes in pottery making, but she quickly decided that she lacked the creative talent to make pots that satisfied her own high standards. Living in Auckland and Canberra, Rae had many friends in academic circles who shared her personal interest.

The first major pot that Rae acquired was by Henri Le Grand, purchased in Australia in the mid 1960's. From there the collection grew to include predominantly New Zealand and Australian art in various forms; paintings and prints, soft craft (rugs, weaving, tapestry), sculpture and jewellery, but the most treasured aspect of the collection was the pottery.

Over the next 40 years Rae concentrated on New Zealand potters, with Len Castle a clear favourite. While the Anglo-Oriental style of Bernard Leach was an inspiration, Rae appreciated and occasionally purchased, other pottery styles, such as Sally Vinson's Majolica-style plate (lot 161). Colour was important to Rae and she favoured greens and earthy tones, but she also appreciated Len Castle's use of bright colours and commissioned him to make her several deep red and sky blue glazed bowls. Rae favoured large scale pieces for the collection, and was aware of the high level of skill involved in producing them.

A love of tramping in the outdoors and the New Zealand landscape, together with her science and mathematics education, influenced Rae's taste in art and pottery and she never stopped learning about other art and cultures. The Aimer family were fortunate to travel overseas often and this further expanded Rae's knowledge. As a family the Aimer's were frequent visitors to many local potters including Graeme Storm's open studio days in Torbay, Jeff Scholes' studio on Bethell's Road and Barry Brickell's studio.

Rae (often accompanied by the whole family), was a regular at Auckland gallery openings; New Vision Gallery, Barry Lett Galleries, Compendium gallery, the Albany Arts Centre, Lopdell House, John Leech Gallery, Portfolio Gallery, Masterworks, the Mairangi Art Centre and of course The Pumphouse in Takapuna were all visited regularly from the 1960's onwards. Rae was not an impulse buyer and frequently made several visits before her final decision. She kept excellent records and exhibition lists; many of them with ticks and crosses, small marginal notes, sketches and descriptions.

Rae visited the Leach Pottery in St Ives, Cornwall in 1980 and toured Japanese potteries with Len Castle in 1984. Both represented important formative sources for New Zealand potters including Len Castle. She taught at Auckland Girls Grammar School with Lyndon Smith and befriended numerous other potters and collectors, such as Ron Sang. Her volunteer work with the Pumphouse Committee over many years saw her working with many artists and exhibitors, and making the odd purchase!

The Aimers' extensive pottery collection was greatly cherished and saw many pieces thoughtfully sited throughout the house and garden where they could be appreciated throughout the day.





- 1 Barry Brickell
Deep bowl
stoneware with blue glaze interior and
persimmon glaze exterior
impressed potter's mark above the foot
130 x 180 x 170mm
\$400 – \$600

- 2 Barry Brickell
Two dinner party platters
stoneware, of rounded rectangle form,
decorated with swirl patterns, 1970s
W. 315mm
\$400 – \$600



- 3 Barry Brickell
Two dinner party platters
stoneware, of rounded rectangle form,
decorated with swirl patterns on a blue ground,
1970s
W. 315mm
\$400 – \$600

- 4 Barry Brickell
Two dinner party platters
stoneware, of rounded rectangle form,
decorated with swirl patterns on an olive
ground, 1970s
W. 315mm
\$400 – \$600



- 5 Barry Brickell
Two dinner party platters
stoneware, of rounded rectangle form,
decorated with a cross pattern on an oatmeal
ground, 1970s
W. 330mm and W. 310mm
\$400 – \$600

- 6 Barry Brickell
Large oval platter
stoneware with stylised flower design
Diam. 460mm
\$400 – \$600



- 7 Barry Brickell
Sculptural vase
wood fired glazed stoneware, the bulbous body
of sinuous form and with a spire finial
impressed potter's mark to the base and foot
H. 410mm
\$1500 – \$2500



- 8 Mirek Smisek
Large 'Grass' bottle vase
stoneware with incised decoration of
concentric and intersecting lines over a dark
grey glaze
impressed potter's mark to the foot
H. 595mm
Provenance: Purchased from 'Mirek Smisek –
An Exhibition of Stoneware Pottery', New Vision
Gallery, Auckland, 28 October – 11 November
1969, no. 3 (original exhibition catalogue and
related newspaper clippings included).
\$2000 – \$3000

- 9 Mirek Smisek
Salt glaze bowl
stoneware, the glaze in deep blue and kelp hues
impressed potter's mark above the foot
Diam. 195mm
\$400 – \$600

- 10 Mirek Smisek
Stoneware teapot
with cane handle, the body decorated with
stylised floral design
impressed potter's mark to the foot
W. 160mm
\$200 – \$300



- 11 Mirek Smisek for Crown Lynn
Bohemia Ware vase
with sgraffito decoration of wavy lines
inscribed Bohemia Hand Made to the base
H. 125mm
\$500 – \$800

- 12 Warren Tippet
Large flagon
stoneware with poured ash and iron glazes,
impressed fish design to the body
H. 315mm
Provenance: Purchased from New Vision
Gallery, August 1969.
\$400 – \$600



- 13 Warren Tippet
Impressive and rare shaped stemcup
stoneware with matte grey glaze with saturated
iron speckles
impressed potter's mark to the foot
H. 385mm
\$800 – \$1200

- 14 Warren Tippet
Large lidded jar
stoneware with wax resist gestural decoration
on mottled blue glaze
375 x 320 x 320mm
\$500 – \$800

- 15 Adrian Cotter
Blue and white charger
stoneware decorated with koru design (small chip possibly due to firing process)
impressed potter's mark to the foot
D. 519mm
Provenance: Purchased from 'Adrian Cotter – Pottery', New Vision Gallery, 30 May – 10 June 1977 (original exhibition catalogue included).
\$100 – \$200



- 16 Doris Dutch
Stoneware bowl
with mottled duck-egg glaze interior and umber washed textured exterior
Diam. 285mm
\$300 – \$500
- 17 Doris Dutch
Small conical vase
stoneware, decorated with wax resist concentric and intersecting lines
impressed potter's mark to the base
65 x 130 x 130mm
\$100 – \$200



- 18 Doris Dutch
Small sculptural vase
stoneware with textured surface with umber pigment, decorated with one gestural seafoam glazed strip (very minor chipping)
180 x 155 x 30mm
\$200 – \$400
- 19 Len Castle
Three lipped pouring bowls
stoneware, all with saturated iron underglaze, various matte overglazes (green, blue and crackle grey)
two with impressed potter's mark to the base, one with incised initials
W. 155mm, W. 110mm and W. 105mm
\$300 – \$500



- 20 Len Castle
Lipped pouring bowl
stoneware with saturated iron underglaze and matte green crackle overglaze
impressed potter's mark to the base
W. 205mm
\$250 – \$400

- 21 Len Castle
Stoneware bowl
predominantly in mottled tenmoku glaze giving to a pool of matte green glaze to the centre
impressed potter's mark to the foot
Diam. 275mm
\$250 – \$400

- 22 Len Castle
A set of three bowls
stoneware with matching mottled tenmoku and matte crackle green glazes (one with minor chip)
impressed potter's mark to each foot
Diam. 210mm, 205mm and 200mm
\$300 – \$500

- 23 Len Castle
Hexagonal jar
stoneware with green and dark blue glaze, impressed rope design to the body
impressed potter's mark to the foot
Diam. 240mm
\$800 – \$1200



- 24 Len Castle
Pinched rim vase
stoneware with burnt umber washed textured exterior; the ribbed body slightly squashed and pinched at the top section to create a double aperture
impressed potter's mark to the foot
H. 235mm
\$400 – \$600

- 25 Len Castle
Stoneware pouring bottle
with sinuous long neck and loop handle, matte light grey glaze over tenmoku glaze
incised potter's initial to the base
Diam. 240mm
\$400 – \$600

- 26 Len Castle
Table bowl
stoneware with jun glaze over tenmoku, wax resist gestural motif to the centre
impressed potter's mark to the foot
Diam. 430mm
\$1500 – \$2500



- 27 Len Castle
Stoneware dish
black iron underglaze, copper red overglaze with matte white highlights and translucent effects to the centre
impressed potter's mark to the base
Diam. 270mm
\$800 – \$1200

- 28 Len Castle
Table bowl
stoneware with wax resist gestural decoration on oversaturated iron glaze over grey ash glaze
impressed potter's mark above the foot
Diam. 410mm
\$1000 – \$2000



- 29 Len Castle
Large stoneware bowl
the black oversaturated iron underglaze giving to a pool of turquoise glaze surrounded by a striking textured band of mottled blue, brown and grey
impressed potter's mark to the base
Diam. 375mm
\$800 – \$1200

- 30 Len Castle
Table bowl
stoneware, the black iron underglaze giving to a pool of mottled red flambé glaze to the centre (restored)
impressed potter's mark to the base
Diam. 365mm
\$400 – \$600

- 31 Len Castle
Large stoneware bowl
with matte white and purple glazes (crack to the center)
impressed potter's mark to the foot
Diam. 340mm
\$250 – \$400



- 32 Len Castle
Stoneware table bowl
with jun glaze over tenmoku
impressed potter's mark to the base
Diam. 410mm
\$1000 – \$2000

- 33 Len Castle
Stoneware bowl
with jun glaze over tenmoku and lightly
impressed rope decoration around the rim
impressed potter's mark to the base
Diam. 205mm
\$300 – \$500

- 34 Len Castle
Shino glaze bowl
stoneware, the shino glaze predominantly in
white and with crackle effect
impressed potter's mark to the foot
Diam. 195mm
\$300 – \$500

- 35 Len Castle
Spherical vase
textured umber pigmented surface (repaired
rim)
incised potter's initial to the base
Diam. 170mm
\$100 – \$200

- 36 Len Castle
Large bottle vase
stoneware with tenmoku and matte pale blue
glazes
impressed potter's mark to the base
H. 345mm
\$800 – \$1200

- 37 Len Castle
Gourd form vase
stoneware with gnarled rim and scored sides in
heavy feldspathic matte white glaze with pale
blue and olive highlights (rim restored)
impressed potter's mark to the foot
H. 335mm
\$1000 – \$2000



- 38 Len Castle
Square section bottle vase
stoneware slab vase with shino glaze
impressed potter's mark to the foot
300 x 105 x 95mm
Provenance: Purchased from Ron Sang Gallery,
December 2004.
\$2000 – \$3000



- 39 Len Castle
Large sedge vase
stoneware with umber pigmented textured
surface (firing cracks)
impressed potter's mark to base
H. 320mm
\$700 – \$1000



- 40 Len Castle
Large hanging form
iron oxide washed stoneware carved with a
sunburst design (minor firing cracks)
impressed potter's mark verso
355 x 335 x 100mm
\$1500 – \$2500



- 41 Len Castle
Hanging bottle
burnt umber washed stoneware, textured finish
impressed potter's mark verso
300 x 310 x 130mm
\$600 – \$1000

- 42 Len Castle
Hanging bottle
iron oxide washed stoneware, textured finish
and with vertical ribs to the body
impressed potter's mark verso
320 x 230 x 70mm
\$700 – \$1100

- 43 Len Castle
Hanging bottle
thinly potted stoneware with textured iron
washed surface and impressed decoration
(small flake chip)
impressed potter's mark verso
235 x 210 x 120mm
\$400 – \$600



- 44 Len Castle
Double-headed Avian hanging form
iron oxide washed stoneware, roughly textured
and with wing lines to the body
impressed potter's mark verso
245 x 350 x 100mm
\$3000 – \$5000



- 45 Len Castle
Large and impressive Discoid vase
press moulded stoneware washed with yellow
ochre pigment and burnt umber, 1980s
impressed potter's LC mark above the foot
450 x 470 x 220mm
Exhibited: 'Making the Molecules Dance: Len
Castle ceramics, a retrospective exhibition
1947–1994', Dowse Art Museum, September
– November 1994 (touring 1995–1996), no. 67.
Illustrated in the catalogue of the exhibition in
the front-end pocket.
Included with this piece is Rae and Peter Aimer's
copy of the catalogue, their correspondence
with the Dowse Art Museum regarding the loan
of the vase, a poster of the exhibition signed
by Len Castle and various related newspaper
clippings.
\$3000 – \$5000

- 46 Len Castle
Avian bowl
stoneware with matte green crackle glaze to
the interior, umber washed textured exterior
W. 290mm
\$800 – \$1200



- 47 Len Castle
Large lipped pouring bowl
stoneware with crackle matte green glaze with
umber washed textured exterior
impressed mark to the base
145 x 480 x 480mm
\$2500 – \$4000



- 48 Len Castle
Large experimental Sulphurous bowl
thickly potted earthenware with roughly cut rim,
matte crackle sulphurous glaze revealing the
matte black underglaze
incised potter's initials to the base
135 x 530 x 530mm
\$3000 – \$5000



- 49 Len Castle
Large footed bowl
stoneware raised on a thin and tall foot, with a
predominating tenmoku glaze giving way to a
pool of yellow crackle and mottle glaze interior
impressed potter's mark above the foot
140 x 400 x 400mm
\$2000 – \$3000



- 50 Len Castle
Sulphurous bowl
earthenware with thinly crackle glaze interior
and matte black exterior
impressed potter's mark to the base
175 x 455 x 445mm
Provenance: Purchased from the '27th Annual
Arts & Crafts Exhibition', Ron Sang Gallery, 6–7
November 2010, no. 68 (origin receipt and
exhibition brochure included).
\$6500 – \$10 000



- 51 Len Castle
Inverted Volcano
stoneware with matte grey textured exterior
and red lava glaze interior
impressed potter's mark to the base
150 x 860 x 165mm
\$8000 – \$12 000



- 52 Len Castle
Large ovoid vase
stoneware with a rare fractured copper blue
glaze
impressed potter's mark to the foot
380 x 280 x 280mm
\$2500 – \$4000



- 53 Len Castle
Crater Lake bowl
earthenware with rich alkaline blue glaze to the
interior, matt grey stained sculptured cavetto
and black glaze exterior
impressed potter's mark to the foot
105 x 450 x 450mm
\$5000 – \$8000

- 54 Len Castle
Crater Lake bowl
matte grey stained earthenware, alkaline
turquoise glaze to the interior (very minor
restoration)
impressed potter's mark above the foot
105 x 455 x 455mm
\$3500 – \$5000



- 55 Len Castle
Large alkaline blue bowl
earthenware with impressed decoration around
the rim, black glazed exterior
impressed potter's mark above the foot
145 x 410 x 410mm
\$2000 – \$3000

- 56 Len Castle
Alkaline blue bowl
earthenware
impressed potter's mark to the base
Diam. 205mm
\$400 – \$600



- 57 Len Castle
Hemispherical lava bowl
earthenware with rich red lava glaze
impressed potter's mark to the base
Diam. 290mm
\$1000 – \$2000



- 58 Len Castle
Lava bowl
thinly potted earthenware with rich red lava glaze
incised potter's mark to the base
Diam. 240mm
\$500 – \$800

- 59 Len Castle
Small lava bowl
thinly potted earthenware with rich red lava glaze
impressed potter's mark above the foot
Diam. 205mm
\$300 – \$500

- 60 Len Castle
Two lava bowls
thinly potted earthenware with rich red lava glaze
impressed potter's mark above each foot
Diam. 195mm (each)
\$600 – \$1000

- 61 Len Castle
Small lava dish
with thick red lava crackle glaze
impressed potter's mark above foot
Diam. 200mm
\$300 – \$500



- 62 Soshu Yamamoto
Bizen chawan (teabowl)
woodfired stoneware
impressed potter's mark above the foot
80 x 125 x 125mm
Note: Soshu Yamamoto was the wife of Bizen Living National Treasure Toshu Yamamoto (1906–1994). They worked together from the Bishuu-gama or Bishuu kiln in Bizen.
Provenance: Purchased in Japan in 1994 while on tour with Len Castle (copy of the original receipt available).
\$150 – \$300

- 63 Japanese dish
woodfired stoneware with incised sunburst design to the rim
impressed potter's mark to the base (unidentified)
Diam. 225mm
\$100 – \$200



- 64 Japanese Shigaraki vase
woodfired stoneware
impressed potter's mark to the base (unidentified)
H. 190mm
Provenance: Purchased in Japan in 1994 while on tour with Len Castle.
\$200 – \$300



- 65 David Leach (England, 1911 – 2005)
Large teapot
stoneware with tenmoku glaze
impressed potter's mark to the base (together with another potter's mark)
H. 290mm (incl. handle)
Provenance: Purchased in Exeter in 1980.
\$800 – \$1200



- 66 Jeff Mincham (Australia, 1950–)
Sculptural pot
raku fired ceramic
incised signature and dated '86 to the base
250 x 290 x 170mm
Provenance: Purchased from 'Collectables Exhibition', Albany Village Pottery, 23 May – 6 June 1994 (exhibition leaflet with Rae's notes included).
\$500 – \$800



- 67 Col Levy (Australia, 1933–)
Asymmetrical pair of faceted bottle vases
stoneware with mottled oversaturated iron glaze (one neck repaired)
impressed potter's mark to each base
H. 315mm and H. 265mm
Provenance: Purchased from Macquarie Galleries, Canberra, December 1968.
\$500 – \$800



- 68 Henri Le Grand (Australia, 1921–1978)
Large stoneware bottle vase
decorated with black horizontal and vertical ribbed design over a matte oatmeal ground (repaired)
incised potter's mark to the base
H. 375mm
\$250 – \$400



- 69 Chester Nealie
Large and impressive bottle vase
woodfired stoneware with large spherical body and lug handle, with scallop shell impressions and splashes of celadon glaze
original potter's labels affixed
465 x 380 x 380mm
Provenance: Purchased from the '25th Annual Arts & Crafts Exhibition', Ron Sang Gallery, 1-2 December 2007, no. 3 (original receipt, exhibition brochure and related ephemera included).
\$2500 – \$4000

- 70 Chester Nealie
Lug handled bottle
woodfired stoneware with a splash of ochre glaze
H. 205mm
\$400 – \$600

- 71 Chester Nealie
Bottle vase
woodfired stoneware with salt glaze and shell impressions
H. 240mm
\$400 – \$600



- 72 Chester Nealie
Large flagon
woodfired stoneware with large spherical body and wide handle, with leaf and scallop shell impressions and splashes of celadon glaze
impressed potter's mark to the handle
H. 460mm
\$2000 – \$3000

- 73 Graeme Storm
Stoneware charger
with matte mottled mustard glaze to the centre
impressed potter's mark to the foot
Diam. 390mm
\$400 – \$600



- 74 Graeme Storm
Large wall charger
stoneware with matte copper carbonate glaze with green, blue, white and yellow effects (with hanging wire)
impressed potter's mark to the foot
Diam. 530mm
\$600 – \$1000

- 75 Graeme Storm
Large wall charger
stoneware with jun over tenmoku glazes (with hanging wire)
impressed potter's mark to the foot
Diam. 530mm
\$600 – \$1000

- 76 Graeme Storm
Lobed bowl
stoneware with pale blue rutile glaze with silver effects
impressed potter's mark to the base
90 x 255 x 255mm
\$200 – \$400

- 77 Graeme Storm
Stoneware dish
matte aqua-green barium glaze
impressed potter's mark to the foot
D. 290mm
\$150 – \$250



- 78 Graeme Storm
Baluster vase
stoneware with flambé turquoise glaze
impressed potter's mark to the foot
H. 290mm
\$400 – \$600

- 79 Graeme Storm
Baluster vase
stoneware with green copper carbonate glaze
impressed potter's mark to the foot
H. 305mm
\$250 – \$400

- 80 Graeme Storm
Stoneware platter
with wax resist copper red spot decoration over dark manganese glaze (restored)
impressed potter's mark to the foot
Diam. 390mm
\$200 – \$300



- 81 Graeme Storm
Wall charger
stoneware, the pastel blue and purple jun glaze forming a wide and elegant crackle effect to the centre (with hanging wire)
impressed potter's mark to the foot
Diam. 510mm
Provenance: Purchased from 'Arts and Crafts Exhibition', Ron Sang Gallery, 3–4 November 2012 (illustrated on the included exhibition brochure).
\$800 – \$1200

- 82 Graeme Storm
Tall stoneware cylinder vase
octagonal body with bands of repeating koru relief decoration, variable copper red and blue green barium glaze (restored)
impressed potter's mark
H. 550mm
Provenance: Purchased from 'Graeme Storm, Exhibition of Pottery', 29 June – 10 July 1970, no. 169 (original exhibition catalogue included).
\$700 – \$1100

- 83 Graeme Storm
Large wall charger
stoneware, manganese glaze with gloss gold highlights (with hanging wire)
impressed potter's mark to the foot
Diam. 580mm
\$800 – \$1200



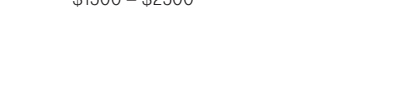
- 84 Graeme Storm
Large floor pot
stoneware with matte green barium glaze giving way to a translucent mottled ochre glaze to the lower body
impressed potter's mark to the foot
H. 405mm
\$800 – \$1200



- 85 Greg Barron
Celadon floor vase
porcelain ribbed body
potter's marks to the shoulders
480 x 400mm
\$2000 – \$3000



- 86 Greg Barron
Large bottle vase
with spherical ribbed body and short neck, crackle glaze in aqua green, white and brown hues
impressed potter's marks to the shoulder
300 x 370 x 370mm
Provenance: Purchased from the '27th Annual Arts & Crafts Exhibition', Ron Sang Gallery, 6–7 November 2010, no. 518 (origin receipt and copy of exhibition brochure included).
\$1500 – \$2500

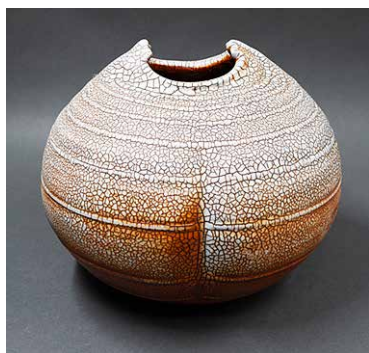




- 87 Greg Barron
Large jug
of tall and slender form with crackle glaze and concentric banding, a fading band of pale blue glaze to the middle (minor firing crack) impressed potter's mark to the foot
H. 325mm
\$800 – \$1200



- 88 Greg Barron
Altered Form with Contours
impressive and large ceramic vase with lobed sides and shaped neck, with poured matte blue glaze over densely crackle white glaze
impressed potter's mark to the shoulder
430 x 500 x 500mm
\$2500 – \$4000



- 89 Greg Barron
Altered Form with Contours
ceramic ovoid vase with crackle shino glaze, shaped 'hooked' rim
H. 230 x 270 x 250mm
\$900 – \$1500
- 90 Greg Barron
Celadon charger
porcelain, decorated with a wave pattern to the center
impressed potter's mark to the foot
Provenance: Purchased from Glenbervie Pottery (Whangarei)
Diam. 485mm
\$500 – \$800



- 91 Greg Barron
Altered Vase
large ceramic vase with lobed sides and matte blue-green glaze with translucent highlights
impressed potter's marks to the shoulders
400 x 490 x 490mm
\$2000 – \$3000

- 92 Greg Barron
Altered Form with Contours
quatrefoil-shaped woodfired ceramic vase with crackle shino glaze
260 x 340 x 340mm
\$900 – \$1500

- 93 Graeme Storm
Stoneware jar
with green copper carbonate glaze
impressed potter's mark to the foot
H. 240mm
\$200 – \$400



- 94 Yvonne Sloan
Growth V
handwoven woollen wallhanging
original artist label with title and dated 1983
stitched verso
1920 x 860mm
Provenance: Purchased from 'Yvonne Sloan Handwoven Wallhangings', 11 – 23 April 1983, Trappings, Auckland (original receipt, exhibition leaflet and related newspaper clippings included).
\$300 – \$500

- 95 Humphrey Ikin
Sideboard
ebonised oak, raised on splayed legs and with four drawers
710 x 3000 x 490mm
\$5000 – \$10 000

- 96 Aboriginal Arts & Crafts
including two Mindirr traditional Pandanus personal bags by Judy Baypangala of the Wulaki group and a traditional Pandanus weaving by Kukuyu Munggukalu
H. 330mm, H. 290mm and Diam. 700mm
Provenance: Purchased from the Anthropology Museum, University of Queensland, 13 April 1987 (original receipt and tags included).
\$150 – \$250

- 97 Patricia Perrin
Large sculptural vase
stoneware with metallic glaze
H. 540mm
Provenance: Purchased from New Vision Gallery, Auckland, November 1973.
\$500 – \$800



- 98 Maria Geszler (Hungary)
Enigmatic Portrait 5 (Winter Scenery)
woodfired porcelain, chamotte clay, salt glaze and silkscreen, 1992/93
multiple artist notes affixed to the base on original artist labels
850 x 350 x 150mm
Provenance: Purchased from 'Fletcher Challenge – Ceramics Awards 1993, no. 38 (original receipt, exhibition catalogue and related newspaper clippings included).
\$600 – \$1000



- 99 Ruth Castle
Large hanging twist form
fine rattan core dyed with Condys crystals
H. 1000mm
\$300 – \$500



- 100 Paul Laird
Apostles
glazed ceramic
both signed to the base, one dated 1998
980 x 400 x 140mm and 880 x 340 x 150mm
Provenance: Purchased from Compendium,
Auckland, July 1998.
\$1000 – \$2000

- 101 Paul Laird
Fishtail
glazed ceramic garden sculpture
impressed mark to the base
490 x 455 x 140mm
\$400 – \$600

- 102 Paul Laird
Quarantine
glazed ceramic (minor repairs)
title inscribed, signed and dated 2005 to the
base
535 x 360 x 110mm
\$300 – \$500

- 103 Paul Laird
Fish platter
earthenware with three modelled fish to the
centre (one tail with minor chip)
signed and inscribed to the base
110 x 500 x 480mm
Purchased from 'Ceramics by Paul Laird',
Compendium, Auckland, August 1994 (related
newspaper clipping with Rae's notes included).
\$250 – \$400

- 104 Helen Pollock
Large squat vase
raku fired ceramic
140 x 410 x 410mm
Provenance: Purchased from 'Thresholds
(Winter Dialogue Part 2)', Pots of Ponsonby,
Auckland, 23 June – 5 July 1986, no. 12 (original
receipt and exhibition flyer included).
\$200 – \$300



- 108 Phillip Luxton
Pair of bookends
painted and glazed ceramic, decorated with
koru design (minor losses)
H. 190 x 150 x 110mm
Provenance: Purchased directly from the artist,
1998.
\$300 – \$400

- 109 Phillip Luxton
Lantern
painted and glazed ceramic garden lamp (needs
rewiring)
550 x 590 x 590mm
\$800 – \$1200

- 105 Helen Pollock
Listeners
pit fired stoneware sculptures (one with losses)
both signed, one also dated 1995 to the base
490 x 250 x 320mm and 505 x 300 x 300mm
Provenance: Purchased from 'Spiritual Themes
in Art', St George's Presbyterian Church,
Takapuna, 6–19 October 1996, no. 1 (original
receipt and exhibition catalogue included).
\$600 – \$900



- 106 Helen Pollock
Ark
terracotta planter (glue repair)
585 x 500 x 320mm
Provenance: Purchased from 'Cravings Images',
Chiaroscuro Gallery, Auckland, 7-18 June 1994,
no. 4 (original receipt, exhibition catalogue and
related newspaper clippings included).
\$600 – \$900



- 107 Lyndon Smith
Girl with Bowl
terracotta garden sculpture
560 x 410 x 330mm
Provenance: Purchased from 'Garden Art', The
Pumphouse, Takapuna, 10 - 28 November 1998,
no. 91 (original exhibition catalogue included).
\$600 – \$900



- 110 Phillip Luxton
Sundial
metal sundial mounted on a ceramic base
incised mark to the shoulder
1095 x 370 x 370mm
\$1000 – \$2000



- 111 Phillip Luxton
Cantilevered birdbath
glazed and textured ceramic, 1990
H. 850mm
Provenance: Purchased from 'Garden Art', The
Pumphouse, Takapuna, 22 September – 10
October 1993, no. 47 (original receipt and
exhibition catalogue included).
\$1500 – \$2500





- 112 Phillip Luxton
Arch
terracotta garden sculpture
950 x 1250 x 195mm
Provenance: Purchased directly from the artist, 1998.
\$1000 – \$2000

- 113 Matt Mclean
Tall Faceted Pot
ceramic garden sculpture
1260 x 660 x 710mm
Provenance: Purchased from 'Garden Art', The Pumphouse, Takapuna, 22 October – 9 November 1997, no. 97 (original receipt and exhibition catalogue included).
\$600 – \$900

- 114 Madelein Dashper
Untitled ('Blue' and 'Poinsetta')
glazed ceramic tiles
both signed verso, one also dated 2001
475 x 485mm and 480 x 470mm
\$400 – \$600



- 115 Paul Johnson
Western Woman III
terracotta
title inscribed, signed and dated 1986 verso
470 x 350 x 360mm
Provenance: Purchased from Compendium, February 1996.
\$300 – \$500

- 116 Christine Smith
Untitled (Two Faced)
terracotta wall hanging sculpture
255 x 215 x 600mm
Provenance: Purchased from Northart Community Art Centre, Northcote.
\$150 – \$250

- 117 Uli Christoffersen
Survivor
terracotta
520 x 500 x 140mm
Provenance: Purchased from 'Works with a Spiritual Theme', St Georges Presbyterian Church, Takapuna, 24 September – 1 October 1994, no. 7 (original exhibition catalogue included).
\$300 – \$500

- 118 Dave Hegglin (attrib.)
Mermaid
carved stone
450 x 280 x 200mm
\$200 – \$400

- 119 Yvonne Rust (attrib.)
Mask vase
large baluster vase decorated in relief with a mask design
H. 365mm
\$250 – \$400



- 120 Yvonne Rust (attrib.)
Wall hanging ceramic mask
burnt umber pigment to the surface
370 x 300mm
\$150 – \$300

- 121 Ian Drury
Face
stoneware decorated with carved and incised details (hanging fixture attached verso)
impressed potter's mark to the lower side
330 x 330mm
Provenance: Purchased from the North Shore Theatre & Arts Trust (The Pumphouse), 25 May 1992, no. 4 (original receipt included).
\$150 – \$250

- 122 Nick Brandon
Large shino vessel
stoneware with comb impressions to the body, 1986
380 x 360 x 360mm
Provenance: Purchased from 'Future Antiques – New Zealand Collectible Craft', Compendium, Auckland, October 1995, no. 33 (original exhibition catalogue included).
\$300 – \$500

- 123 Nick Brandon
Three bottle form vases
stoneware with sang de boeuf glaze (some cracks and repairs)
H. 1360mm, H. 1200mm and H. 1000mm
\$600 – \$1000



- 124 Peter Collis
Trio of three slender vases
with spire necks and bright turquoise crackle glaze (one neck repaired)
impressed potter's mark to each foot
H. 295mm, H. 255mm and H. 235mm
\$800 – \$1200



- 125 Maak Bow
Diversity within conformity (series three vessels)
thrown mid-fired clay
impressed potter's mark to each base
H. 250mm, H. 210mm and H. 155mm
Provenance: Purchased from 'Portage Ceramics Awards 2016', Te Uru Waitākere Contemporary Gallery, 11 November 2016 – 5 February 2017, illustrated on p. 14 of the catalogue (included). Winner of the Honourable Mention.
\$400 – \$600



- 126 John Parker
Gold vase
with bronze glaze with golden highlights, the body with heavily scored sides
impressed potter's mark to the foot
H. 170mm
Provenance: Purchased from the North Shore Theatre & Arts Trust (The Pumphouse), Takapuna, 9 April 1990 (original receipt included).
\$400 – \$600

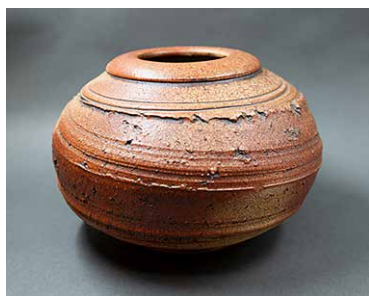
- 127 Rick Rudd
Two sculptural teapots
matte black terracotta clay, with metallic glazed lid (some chipping)
H. 280mm and W. 200mm
\$300 – \$500



- 128 Rick Rudd
Two large sculptural teapots
matte black terracotta clay, with metallic glazed lid
W. 300mm and W. 260mm
\$400 – \$600



- 129 Peter Alger
Lidded jar
woodfired heavily potted stoneware with
poured olive green glaze
impressed potter's mark to the base
255 x 220 x 220mm
Provenance: By repute, purchased from
Masterworks, Auckland, October 1995.
\$400 – \$600



- 130 Peter Alger
Large woodfired vase
stoneware with textured surface
impressed potter's mark to the base
240 x 350 x 350mm
Provenance: Purchased from Compendium,
Auckland, May 1998.
\$600 – \$1000

- 131 Peter Alger (attrib.)
Large cylindrical stoneware vase
with cut and shaped sides, decorated with
brushed gestural pattern
355 x 310 x 310mm
\$500 – \$800



- 132 Ray Rogers
Fungoid form vase
raku fired ceramic
incised signature to the base
260 x 280 x 280mm
\$700 – \$1100

- 133 Ray Rogers
Large platter
stoneware with iridescent rust and black iron
glaze
impressed potter's mark to the foot
Diam. 320mm
Provenance: Purchased from Ron Sang Gallery,
December 2004.
\$250 – \$400



- 134 Ray Rogers
Large discoidal squat vase
with fungoid form rim and iridescent metallic
blue and taupe glaze
incised signature to the base
Diam. 320mm
\$800 – \$1200



- 135 Ted Kindleysides
Crater Pot
glazed and painted ceramic (some losses)
635 x 430 x 370mm
Provenance: Purchased from 'Kindleysides
Studio' exhibition, The Pumphouse, Takapuna,
5–23 May 1993, no. 68 (original receipt,
exhibition catalogue and related newspaper
clipping included).
\$500 – \$800



- 136 Ted Kindleysides
Fountain Fish
woodfired ceramic
500 x 360 x 360
Provenance: Purchased from 'Garden Art', The
Pumphouse, Takapuna, 2 – 27 September
1992 (original receipt and copy of the exhibition
catalogue included, with Rae's handwritten
note reading that this piece won the Pukekohe
Franklin Art Award judged by Howard Williams).
\$600 – \$1000

- 137 Brendon Adams
A pair of floor vases
glazed stoneware in pastel grey and blue glazes
(one with a firing crack)
H. 570mm and H. 515mm
\$200 – \$400



- 138 Keith Blight
Symbols of Japan
ceramic trough vase with sang de beauf glaze
and impressed decoration
impressed potter's mark to the lower body
295 x 270 x 850mm
Provenance: Purchased from Compendium,
Auckland.
\$300 – \$500



- 139 Keith Blight
Ikebana Oblong Moribana vase
with charcoal free glaze
impressed potter's mark to the base
145 x 335 x 120mm
Provenance: Purchased from 'Pots and Flowers
to Brighten the Early Days of Spring – An
Exhibition by Keith Blight and members of the
Ichiyo School of Ikebana', The Pumphouse,
Takapuna, 16 – 26 September 1986, no. 55
(copy of original receipt, exhibition catalogue
and flyer included).
\$150 – \$250

- 140 Keith Blight
Pair of Ikebana Moon Pots
of 1/3 moon shape, with free glaze of 'forest
colours', together with three kenzan (spiky frogs)
impressed potter's mark to each base
50 x 190 x 130mm
Provenance: Purchased from 'Pots and Flowers
to Brighten the Early Days of Spring – An
Exhibition by Keith Blight and members of the
Ichiyo School of Ikebana', The Pumphouse,
Takapuna, 16 – 26 September 1986, no. 51
(copy of original receipt, exhibition catalogue
and flyer included).
\$150 – \$250

- 141 Keith Blight
Rectangular stoneware platter
matte black and gold glaze
impressed potter's mark to the base
W. 345mm
\$100 – \$200



- 142 Penny Evans
Ikebana trough vase
of rectangular shape with flared 'ripped' edges, speckled duck-egg glaze to the interior, together with one kenzan (spiky frog) incised potter's mark to the base
70 x 160 x 140mm
Provenance: Purchased from Pots of Ponsonby, Auckland.
\$100 – \$200

- 143 Potter Unknown
Ikebana vase
of rounded square form with ribbed detailing, together with a kenzan (spiky frog) impressed potter's mark to the foot (unidentified)
D. 155mm
\$50 – \$80



- 144 Peter Shearer
Stoneware bowl
with textured rim and dark forest green glaze, decorated with a spiral design to the sides
impressed potter's mark above the foot
100 x 200 x 200mm
\$80 – \$150



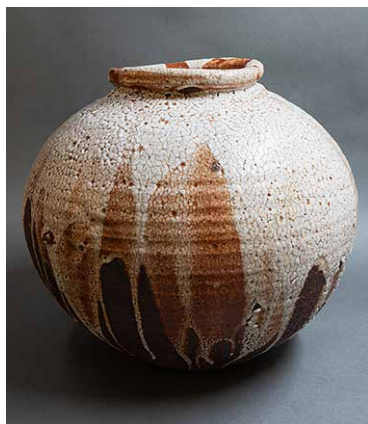
- 145 Peter Stichbury
Stoneware charger
heavily potted and decorated with gestural wax resist pattern on jun over tenmoku glazes
impressed potter's mark to the foot
Diam. 365mm
Provenance: Purchased from 'Fire & Clay: 38th Annual Exhibition of the Auckland Studio Potters', 25 September – 13 October 2002, no. 19 (original receipt and exhibition catalogue included).
\$150 – \$250

- 146 Peter Stichbury
Stoneware charger
heavily potted and decorated with stylised floral wax resist pattern
impressed potter's mark to the foot
Diam. 365mm
Provenance: Purchased from Albany Village Pottery.
\$150 – \$250

- 147 Steve Aitken
Lidded jar
salt glazed stoneware
impressed potter's mark to the foot
H. 250mm
\$100 – \$200

- 148 Nancy Wilson
Woodfired vase
hemispherical form with sunken top
H. 155mm
Provenance: Purchased from Hugh Wrights, Auckland, 1986 (copy of exhibition catalogue list included).
\$100 – \$200

- 149 Elena Renker
Woodfired vase
stoneware with splashed and poured celadon and white glazes
impressed potter's mark to the foot
H. 275mm
\$150 – \$250



- 150 Elena Renker
Large pot
heavily potted stoneware with poured shino glaze
impressed and incised potter's marks to the base
310 x 310 x 310
Provenance: Purchased from the '27th Annual Arts & Crafts Exhibition', Ron Sang Gallery, 6–7 November 2010, no. 665 (origin receipt and copy of exhibition brochure included).
\$200 – \$300



- 151 Elena Renker
Two chawan (tea bowls)
shino glazed stoneware
impressed potter's mark to each base
110 x 130 x 130mm and 80 x 120 x 120mm
\$100 – \$200

- 152 New Zealand Studio Pottery
Two shino glaze teapots
both with cane handles, the larger made by Ian Smail, the smaller by Chris Cockell
H. 170mm and H. 110mm (excluding handles)
\$100 – \$200



- 153 Jeff Scholes
Shino style dish
stoneware, decorated with wax resist concentric lines and swirl design revealing the oxidized body giving a crackle shino glaze effect
signed and dated '84 to the base
Diam. 310mm
\$100 – \$200

- 154 Jeff Scholes
Stoneware coffee pot
with persimmon glaze and subtle wax resist decoration
impressed potter's mark to the foot
H. 205mm
\$80 – \$120

- 155 Jeff Scholes
Stoneware dish
with tenmoku glaze and stylised flower decoration in low relief
impressed potter's mark to the foot
D. 300mm
\$100 – \$200

- 156 Potter Unknown
Stoneware platter
with geometrical wax resist decoration
D. 410mm
\$50 – \$80



- 157 Michael Lucas
Wall hanging stoneware charger
with jun over tenmoku glazes
Diam. 465mm
Provenance: Purchased from Ron Sang Gallery, December 2004.
\$300 – \$500

- 158 Michael Lucas and Jill Totty (Phoenix Pottery)
Three hanging plates
glazed stoneware decorated with stylised floral design, 1980's (one repaired)
painted potters' marks to each base
Diam. 260mm, 200mm and 195mm
\$100 – \$200



- 159 Andrew and Jeannie Van der Putten
Ceramic bowl
painted with desert island design motifs
predominantly in green and yellow
painted potters' marks to the foot and original
label affixed to the base
D. 215mm
\$100 – \$200

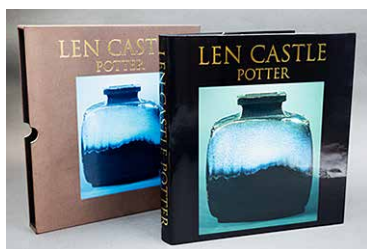
- 160 Simon and Tineke Engelhard
Footed dish
thinly potted ceramic with gestural wax resist
decoration in pale blue over matte black
background
incised potters' mark to the foot
550 x 205 x 205mm
\$80 – \$150



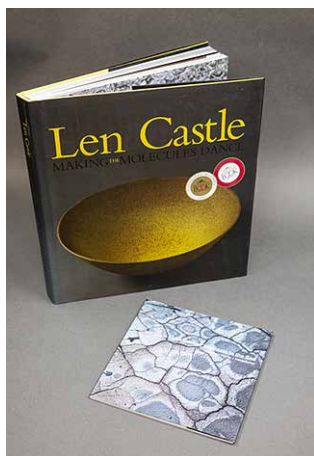
- 161 Sally Vinson
Ceramic platter
with painted abstract decoration
Diam. 340mm
\$100 – \$200
- 162 Potter Unknown
Stoneware vase
barrel shape with ash glaze in olive green and
matte grey hues
H. 330mm
\$80 – \$150
- 163 Potter Unknown
Small stoneware vase
heavily scored surface with umber pigment rub
impressed mark to the foot (unidentified)
H. 150mm
\$50 – \$80
- 164 New Zealand Studio Pottery
Pottery mug and bowl
including a large Crewenna Pottery tenmoku
mug and a Paul Winspear bowl with tenmoku
and jun glazes
potter's mark to each base
H. 130mm and D. 155mm
\$100 – \$200



- 165 Selection of small Studio Pottery items
comprising of a Neil Roberson stoneware vase,
a Campbell Hegon shino jar and a Helle Allpass
wax resist dish
potter's mark to each base
H. 165mm, H. 100mm, D. 160mm
\$150 – \$350
- 166 Sue Clifford
Asymmetrical pair of small porcelain vases
textured body with blue pigment rub
H. 105mm and H. 80mm
\$40 – \$60
- 167 Potters Unknown
Two small porcelain pots
including a small conical bowl and a vase
one signed (illegible) and dated 2009, the other
with impressed mark (unidentified)
H. 115mm and Diam. 135mm
\$80 – \$150

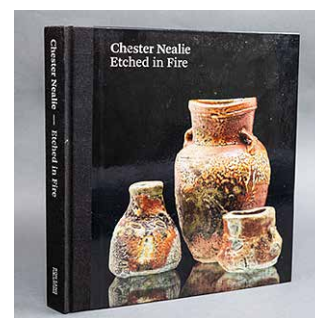


- 168 Len Castle
Potter
Sang Architects 2002. No 17 of 160 copies
signed and numbered by Len Castle. DJ and in
original slip case.
\$200 – \$250

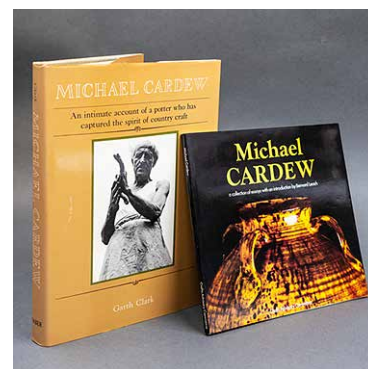


- 169 Len Castle [signed]
Making the Molecules Dance
Lopdell House Gallery 2008. Signed by Len
Castle and dated 2011. Hard cover, DJ. 320mm.
2. Len Castle: Mountains to the Sea. Ceramics,
Poetry, Photographs. Hawkes Bay 2008. Soft
covers, wrappers 190mm.
Both fine copies.
\$150 – \$200

- 170 Len Castle
Making the Molecules Dance. Ceramics
1948–2008.
Lopdell House Gallery 2008. Hard cover and in
DJ 318mm. Fine.
\$100 – \$150



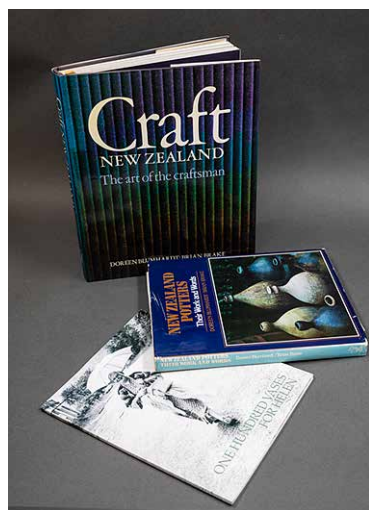
- 171 Chester Neale
Etched in Fire
Edited by Damian Skinner. Ron Sang
Publication. Hard cover, illustrated papered
boards, cloth spine. 310mm. VG.
\$80 – \$120
- 171A Bernard Leach [4 titles]
1. Bernard Leach – Hamada, Potter.
Kodansha International Ltd 1978. Hard cover,
DJ, 305mm.
2. Carol Hogben – The Art of Bernard Leach.
Faber & Faber 1978. Hard cover, DJ, 310mm.
3. Bernard Leach – Beyond East and West.
Memoirs, Portraits and Essays. Faber & Faber
1978. Hard cover, DJ, 255mm.
4. Bernard Leach, The Potters Challenge. D.
Outerbridge [editor] Souvenir Press 1975. Hard
covers, DJ, 210mm.
Good to VG.
\$100 – \$150



- 172 Bernard Leach [Intro]
Michael Cardew. A Collection of Essays. Crafts
Advisory Committee [ca 1976]. Soft covers with
wrappers 200mm.
Garth Clark – Michael Cardew. A Portrait. Faber
& Faber 1978. Hard covers, DJ, 265mm
\$50 – \$100
- 172A David Craig & Gregory O'Brien
His Own Steam. The Work of Barry Brickell.
Auckland University Press 2013. Hard cover, DJ,
255mm. VG.
2. Christine Leov-Lealand – Barry Brickell,
A Head of Steam. Exisle 1996. Soft covers,
210mm. Clippings and catalogue from Marshall
Seifert Gallery [2003]
\$80 – \$120

- 173 Mirek Smisek [3 titles]
60 Years 60 Pots
Mahara Gallery 2009. Illustrated soft covers, wrappers. 210mm.
2. Barry Brickell – His Own Steam. The Works of Barry Brickell. Auckland University Press 2013. Hard cover, DJ 255mm.
3. John Parker – Ceramics. David Bateman 2002. Signed and dated by John Parker. Hard covers, DJ 260mm.
4. Graeme Storm – Exhibition catalogue 2011. All fine.
\$50 – \$100

- 174 Gail Lambert [3 titles]
Pottery in New Zealand – Commercial and Collectable
Heinemann 1985, 1st edition. Illustrated, clippings enclosed. Hard cover, DJ, 290mm.
2. Cecilia Parkinson & John Parker – Profiles; 24 New Zealand Potters. David Bateman 1988. Clippings enclosed, hard cover, DJ, 295mm.
3. The Ron Sang Selection – Waikato Museum Exhibition Catalogue 2005. Three booklets 'The Artists', 'The Collection', 'The Collector'. Card covered booklets in slip case 235mm. All fine VG.
\$60 – \$100



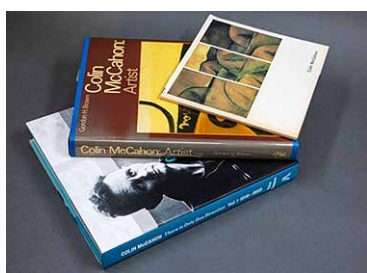
- 175 Doreen Blumhardt & Brian Brake [2 titles, 1 other]
Craft, New Zealand. The Art of the Craftsman. Reed 1981. Hard covers and in DJ, 310mm. VG.
2. Blumhardt & Brake – New Zealand Potters. Their Work and Words. Reed 1976. Hard cover, DJ, 260mm. VG.
3. One Hundred Vases for Helen. Exhibition catalogue for Masterworks Gallery 2015, Soft covers, 250mm. VG.
\$100 – \$200

- 176 Doreen Blumhardt [4 titles]
Teacher and Potter
Essay by Marion McLeod. Daphne Brasell Assoc 1991. Illustrated soft covers 210mm. fine.
2. Moyra & Damian Skinner – Conetendown. Studio Pottery in New Zealand 1945 – 1980. David Bateman 2009. Soft covers, illustrated wrappers. 250mm, fine.
3. Shiga the Potter – Sydney 1982. Hard cover, DJ 260mm,
4. D. & P. Beatson – The Crane and the Kotuku. Manawatu Art Gallery 1994. Soft covers, 240mm.
\$50 – \$75

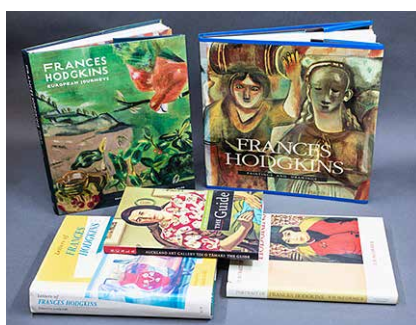
- 177 Toss Woolloston [2 titles]
1. Sage Tea. An Autobiography. Collins 1980. Hard cover, DJ [spine sunned] 220mm. VG
2. Gerald Barnett – Toss Woolloston. An Illustrated Biography. Randon Century 1991. Illustrated soft covers, 210 x 260mm. VG.
\$50 – \$75



- 178 Paul Dibble [4 titles]
The Large Works
David Bateman 2012. Hard cover oblong format, DJ, 215 x 350.
2. Terry Stringer, Witi Ihimaera – Mask & Mirror. An Artists Book. IWA/POI [1994]. Soft covers 295mm, VG.
3. Peter Siddell – The Art of Peter Siddell. Godwit 2011. Hard covers, DJ, 246mm.
4. Molly Macalister – A Memorial Exhibition. Auckland City Art Gallery 1982. Soft covers, 240mm.
All VG to fine.
\$100 – \$150



- 179 Gordon H. Brown [3 titles]
Colin McCahon: Artist
Reed 1984. Clippings enclosed and brochures. Hard covers and in DJ. 300mm.
2. Peter Simpson – Colin McCahon. There is only One Direction. Vol. I. 1919 – 1959. Auckland University Press. Signed and inscribed by the author. Hard cover, DJ 290mm.
3. Colin McCahon – A survey exhibition. Auckland City Art Gallery 1972. Soft illustrated covers. 195mm
\$100 – \$150



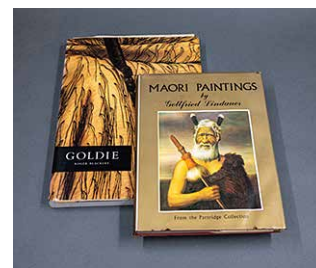
- 180 Frances Hodgkins [5 titles]
1. Catherine Hammond & Mary Kisler – Frances Hodgkins, European Journeys. Auckland University Press 2019. Hard covers, DJ 290mm.
2. I. Buchanan/M. Dunn/E. Eastwood – Frances Hodgkins, Paintings and Drawings. Auckland University Press 1994. Hard cover, DJ 285mm.
3. E.H. McCormick – Portrait of Frances Hodgkins. Auckland University Press 1990. Hard cover, DJ 237mm.
4. Linda Gill – Letters of Frances Hodgkins. Auckland University Press 1993. Hard cover, DJ 255mm
All vols VG.
\$100 – \$150

- 181 Stanley Palmer
West
Godwit 2000. Hard cover, oblong format, 270 x 380mm.
2. Stanley Palmer – To the Harbour. Lopdell House Gallery 2007. Signed by the author and dated 2007. Oblong in DJ 255 x 310mm, clippings and postcards enclosed.
3. Michael, Dunn – The Drawings of Russell Clark. Collins 1976. Oblong, hard cover in DJ. 273 x 375mm.
\$60 – \$80

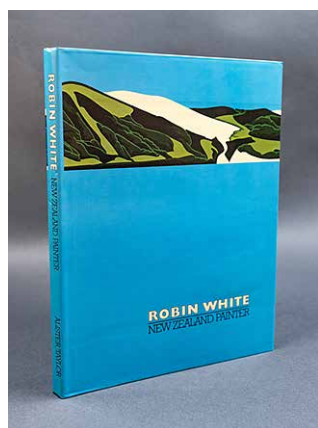
- 182 Damian Skinner
Don Binney – Nga Manu/Nga Motu – Bird Islands. Auckland University Press 2003. Soft illustrated covers, 250mm.
With an address given by Don Binney – Forty Years On; an anecdotal view. Typescript 28 Aug 2003. Clippings.
\$60 – \$100



- 183 Marti Friedlander and James McNeish
Larks in Paradise
Collins 1974. Hard cover, and in DJ. 290mm. Foxing.
2. Peter Simpson – Allen Curnow: A Loop in Kauri Road. Lopdell House, Gallery 1995. Soft covers.
3. Denis Glover – To Particular Woman. Nags Head Press, No 40/50 copies. 1970. DJ 180mm.
4. D. Pitt & C. Macpherson – Emerging Pluralism. The Samoan Community in NZ. Longman 1974 Soft cover.
5. James K. Baxter. The Man on the Horse. Univ of Otago Press 1967. Soft covers.
6. The Best of Whim Wham. Paul 1959. Soft covers.
7. Ian Wedde – Made Over. Stephan Chan 1974. Hard covers, DJ.
8. Allen Curnow Broadsheet – The Hucksters & the University or Out of Site Out of Mind or Up Queen Street without a Paddle. Auckland 1957. Some foxing.
\$50 – \$100

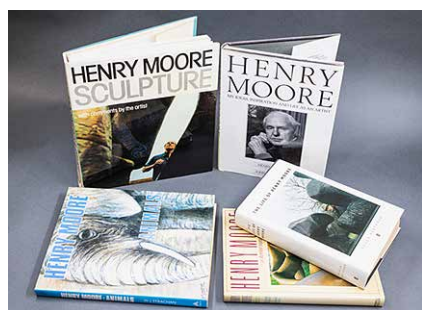


- 184 Roger Blackley
Goldie.
Auckland Art Gallery 1997. Soft covers, spine faded. 285mm, clippings.
2. J.C. Graham – Maori Paintings By Gottfried Lindauer from the Partridge Collection. Reed 1966. DJ 245mm.
\$50 – \$60



- 185 White, Robin
New Zealand Painter
Alister Taylor 1981. Hard cover, DJ 290mm. Fine.
\$60 – \$80

- 186 Peter Cape [3 volumes]
1. Please Touch. A Survey of the Three Dimensional Arts in New Zealand. Collins 1980. Hard cover, DJ 285mm.
2. Printers and Printmakers in New Zealand. Collins 1974. Hard cover, DJ 290mm.
3. Artists & Craftsmen in New Zealand. Collins 1969. Hard cover, DJ 260mm.
Good to fine.
\$100 – \$150



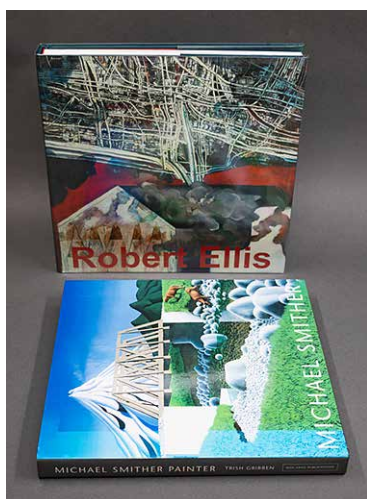
- 187 Henry Moore [5 volumes]
1. Robert Berthoud – The Life of Henry Moore. Faber & Faber 1987. Hard cover, DJ, 240mm.
2. W. Packer/ G. Levine – Henry Moore – and Illustrated Biography. London 1985. Hard cover, DJ 255mm.
3. Henry Moore & John Hedgecoe – Henry Moore, My Ideas, Inspiration, and Life as an Artist. Ebury Press, 1986. Hard cover, DJ 190mm.
4. W. J. Strachan – Henry Moore Animals. Aurum Press 1983. Hard cover, DJ 275mm.
5. Henry Moore Sculpture. With comments by the artist. Macmillan 1981. Hard covers, 295mm.
\$150 – \$250

- 188 Judith Dunham [2 titles]
Details of Frank Lloyd Wright
The California Work, 1909–1974. Thames and Hudson 1994. Hardcover, DJ, 255mm, fine.
2. Carla Lind – The Wright Style, The Interior of Frank Lloyd Wright. Thames and Hudson 1972. Hard cover, DJ, 300mm, fine.
\$80 – \$120

- 189 Margaret Preston [21 titles]
1. Roger Butler – The Prints of Margaret Preston. A Catalogue Raisonné. Australian National Art Gallery 1987. Illustrated soft covers, 280mm. Fine.
2. Elizabeth Butel – Margaret Preston. The Art of Constant Rearrangement. Penguin Books 1985. Illustrated soft covers, 235mm, VG.
\$80 – \$100



- 190 Women Artists [7 Titles]
1. Evelyn Page – Seven Decades. 1988 rep. Soft illustrated covers, 245mm, VG.
2. Vita Cochran & Jill Trevelyan – Rita Angus. Live to Paint and Paint to Live. Godwit 2001. Illustrated wrappers, 255mm, fine.
3. Rita Angus – National Art Gallery 1982. Illustrated soft covers, 200mm. Light wear.
4. Edith Collier – In Retrospect. Sergeant Gallery 1980. Illustrated soft covers, VG, 240mm.
5. C. Barton – Louise Henderson, the Cubist Years 1946–1958. Auckland City Art Gallery 1991. Soft illustrated covers, 255mm. Fine.
6. Doris Lusk 1916–1990. "Moods, Metaphors, & Symbols". Ferner Galleries 1998. Soft illustrated covers, 210 x 260mm, fine.
7. New Zealand Women Painters. Auckland City Art Gallery 1975. Soft covers b/w 270mm. VG.
\$100 – \$150



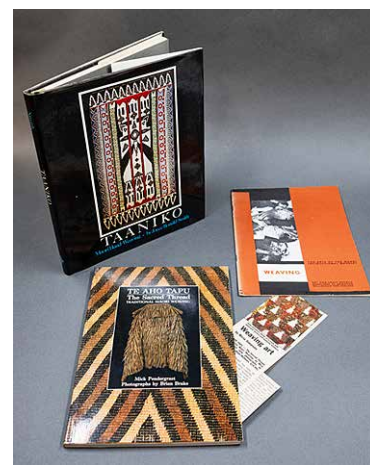
- 191 Michael Smither [2 titles]
Painter with Trish Gribben
Ron Sang Publications. Signed by Michael Smither & dated 2004. Hard cover, DJ 305mm Fine.
2. Robert Ellis – with Hamish Keith, E. H. & N Ellis. Ron Sang Publications 2014. Illustrated boards and DJ, 310mm. Fine.
\$200 – \$250

- 192 Arthur Boyd [4 titles]
1. Franz Philipp – Arthur Boyd. Thames and Hudson 1967. Hard cover, DJ 280mm.
2. Ursula Hoff – The Art of Arthur Boyd. Andre Deutsch 86. Hard cover, DJ 310mm.
3. Sandra McGrath – The Artist and the River. Bay Books 1982. Hard cover, DJ 325mm.
4. T. S. R. Boase – Nebuchadnezzar. Drawing and Painting by Arthur Boyd. Thames and Hudson 1972. Hard cover, DJ 255mm.
\$80 – \$120

- 193 Sidney Nolan [7 titles, books & catalogues]
1. Nolan's Gallipoli [1983]. 2. Nolan Landscapes & Legends, 1937–1987. [1987]. 3. Sidney Nolan: The City and the Plain. [1983]. 4. Nolan at Lanyon. [Canberra 1985]. 5. Sidney Nolan Myth and Imagery. [Macmillan 1967]. 6. Sidney Nolan Such is Life. A Biography. [1987]. 7. Sidney Nolan – Australia. Bay Books 1979. 8. Sidney Nolan's/ Ned Kelly [2002]. 9. Illuminations. an Exhibition of paintings by Sidney Nolan, Canberra 1983. 10. Sidney Nolan, Asian and Promethean Studies. [1967]
\$100 – \$200

- 194 Architecture in New Zealand [4 titles]
1. John Stacpoole – William Mason. The First New Zealand Architect. Auckland 1971. Hard covers DJ, 250mm, VG.
2. Peter Shaw – A History of New Zealand Architecture. Hodder Moa Beckett 1997. Hard cover, DJ, 300mm, fine.
3. S. Bonny & M. Reynolds – Living with 50 architects, a New Zealand Perspective. Cassell 1980. Oblong hard cover, DJ, 215 x 285mm.
4. Robin Morrison – Images of a House. Alister Taylor 1978. Soft covers 195 x 250, foxing.
\$50 – \$100

- 195 Australian Pottery [bundle of books]
1. Jennifer Isaacs – Thancoupie the Potter. Sydney 1982. Hard cover, DJ, 315mm.
2. The Pottery and Ceramics of David & Hermia Boyd. Matthews Hutchinson 1977. Hard cover, DJ, 285mm.
3. Hood & Garnsey – Australian Pottery. Melbourne 1972. Illustrated soft covers, 280mm.
4. Alan Moulton – Craft in Australia. Reed Books 1984. 290mm.
5. Janet Mansfield – Contemporary Ceramic Art in Australia and New Zealand. Craftsman House 1995. Hard cover, DJ, 1995.
\$60 – \$100



- 196 Māori Weaving [3 titles]
1. Mick Pendergrast – Te Aho Tapu. The Sacred Thread. Traditional Māori Weaving. Reed 1987. Soft illustrated covers, 260mm, fine.
2. Joyce Ronald Smith – Taaniko. Octopus 1975. Hard cover, DJ 290mm.
3. Weaving – The Art of the Māori. Dept of Education 1964. Paper covered booklet.
\$60 – \$80

- 197 Māori Art & Carving [4 titles]
1. Gilbert Archey – Whaowhia, Māori Art and its Artists. Collins 1977. Hard cover, DJ 300mm.
2. Gilbert Archey – An Outline of Māori Art, Sculpture and Design. Auckland 1960. Paper covered booklet. 240mm.
3. Carving. The Art of the Māori. Dept of Education 1964. Paper covered booklet.
4. Margaret Orbell/ Geoff Moon – The Natural World of the Māori. Collins 1985. Hard cover, DJ 295mm.
\$60 – \$100

- 198 Māori History [4 titles]
 1. Michael King – Te Puea. H & S 1977. Hard cover, DJ, spine faded else fine. 240mm.
 2. Michael King – Te Ao Hurihuri. Aspects of Maoritanga. Hicks Smith & Sons 1975. Hard cover, DJ 220mm.
 3. P. W. Hohepa – A Māori Community in Northland. Reed 1970. Soft covers 215mm.
 4. Judith Binney et al – Mihihi. The Prophet Rua Kenana and His Community as Maungapohatu. Wellington 1979. Illustrated, soft covers 290mm.
 \$80 – \$100
- 199 Hillary Edmund
 High Adventure
 H & S 1955 1st edition. Hard cover, DJ 210mm.
 2. Sir Vivian Fuchs and Sir Edmund Hillary – The Crossing of Antarctica. Cassell 1958 1st edition. Hard cover, DJ.
 Condition varies, some foxing in both volumes.
 \$50 – \$100

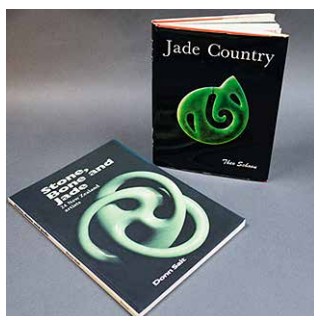


- 200 Dick Scott [3 titles by]
 Ask that Mountain. Story of Parihaka. Heinemann Auckland 1975. Hard cover in DJ, 235mm.
 2. Fire on the Clay. The Pakeha Comes to Auckland. Southern Cross Books Auckland 1979. Hard cover, DJ 240mm.
 3. Seven Lives on Salt River. H & S Auckland 1988. Soft illustrated covers. 250mm. All VG to fine.
 \$100 – \$200



- 201 Hone Tuwhare [2 titles]
 No Ordinary Sun. Poems
 Auckland: Longmans Paul 1969 rep. Cover illustration by Para Matchitt edition, illustrated hard covers, and in original DJ 220mm.
 2. Something Nothing. Caveman Press 1974, 1st edition. Soft covers and graphics by Robin White.
 \$150 – \$200
- 202 Barbara Hepworth
 A Pictorial Biography
 New extended edition. Moonraker Press 1978. Soft covers 265mm.
 2. Barbara Hepworth – The Tate Gallery 1968. Soft covers 210mm.
 \$50 – \$60

- 203 New Zealand Artists
 Rosalie Gascoigne – Plain Air. Wellington 2004. Illustrated wrappers, 240mm. Fine.
 2. Francis Pound – Stories we tell Ourselves. The paintings of Richard Killeen, David Bateman 1999. Hard cover, DJ 310mm. Fine.
 3. Linda Gill – Gretchen Albrecht. Radom Century 1991. Soft illustrated covers, 290mm.
 4. Milan Mrkusich – Painting 1946 to 1972. Auckland 1972. Soft covers, 240mm.
 5. Trusttsum Selected works 1962 – 1979. Sarjeant Gallery 1980. Soft covers, 240mm.
 \$60 – \$80
- 204 Raymond McIntyre
 A New Zealand Painter
 Heinemann 1984. Hard covers, DJ 285mm.
 2. Julie King – Sydney Lough Thompson – At Home and Abroad. Robert McDougall Gallery 1990.
 Soft covers, 240mm.
 \$40 – \$60

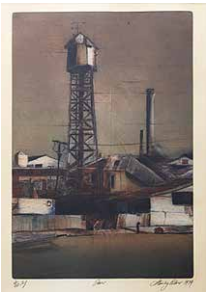


- 205 Theo Schoon [2 titles]
 Jade Country
 Sydney 1973. Hard cover, DJ 245mm.
 2. Donn Salt – Stone, Bone and Jade. 24 New Zealand Artists. Bateman 1992. Illustrated soft covers, 285mm, fine.
 \$80 – \$100
- 206 Charles O. Mountford [5 titles]
 Australian Aboriginal Portraits
 Melbourne University Press 1967. Hard covers in DJ, 285mm.
 2 & 3. F.D. McCarthy – [2 titles] Australian Aboriginal Decorative Art; Australian Aboriginal Rock Art. Australian Museum, Sydney 1966 and 1962. Soft paper covers, VG.
 4. Annemarie Brody – The Face of the Centre. Papunya Tula Paintings. National Gallery of Victoria 1986. Soft covers, 295mm.
 5. R & C. Berndt and J.E. Stanton – Aboriginal Australian, A visual perspective. Methuen Australia 1981. Hard covers, DJ 280mm. All VG.
 \$100 – \$150

- 207 Australian Art Books [Box]
 1. J. Phillos- Artists Gardens 1780'-1980's. Bay Books; 2. Charles Blackman – The Lost Domains. Reed 1980; 3. Geoffrey Dutton – Russell Drysdale. London 1963. 4. Neville Weston – Lawrence Daws. Reed 1982. 5. Patrick McCaughey – Fred Williams. Bay Books 1980; 6. K. Scarlett – Contemporary Sculpture in Australian Gardens. G & B Arts 1993; 7. Richard Haese – Rebels and Precursors. Allen Lane 1981; 8. Jack Manton Collection – Heidelberg School [1979]; 9. Christopher Uhl – Albert Tucker. Melbourne 1969; 10. Thomas Shapcott focus on Charles Blackman. Queensland 1967; 11. Sandra McGrath – Brett Whiteley. Bay Books 1979; 12. Ronald Millar – John Brack. Lansdowne 1971.
 \$100 – \$150
- 208 Craft Periodicals and Catalogues, New Zealand & Australia.
 Ann Robinson – Casting Light. [1987; Treasures of the Underworld. Te Papa 1993; Jean Macaskill – Day by Night [2006].
 Bundle of Fletcher Challenge Awards, Craft Magazines, Portage Ceramic Award catalogues. NZ sculpture catalogues etc.
 Five issues of Pottery in Australia [1960's]; Carl McConnell Master Potter. Queensland 1986; Pottery in Australia 1986.
 \$50 – \$100
- 209 Janet Mansfield
 Ceramics in the Environment.
 A & C Black 2005. Hard cover, DJ 280mm, fine.
 2. Edmund De Waal & Claudia Clare – The Pot Books. Phaidon 2011. Illustrated boards and in DJ 295mm, fine.
 3. Two catalogues – Luc Piere, Paintings Graphics Environment and Morris Louis. Both folding brochures and a bundle of six issues of Ceramics Art and Perception [1990's]
 \$100 – \$150
- 210 Lynn, Elwyn [3 titles]
 Judy Cassab – Places, Faces and Fantasies. Macmillan 1984. Hardcover, DJ 390mm.
 2. Selected Paintings of L.S. Lowry Oils and Watercolours. Jupiter Books 1972. Soft covers, 285mm.
 3. Robert Descharnes – Auguste Rodin. Macmillan 1967. Hard cover, fine, DJ torn.
 \$50 – \$60
- 210A New Zealand Pottery [Box Lot]
 28 issues of New Zealand Potter magazines 1976–2004
 together with a collection of Artists and Potters, Exhibition and Gallery catalogues, brochures and clippings; and 1967 and 1968 N.Z. Potters Calendars with photographs by Marti Friedlander.
 \$100 – \$150



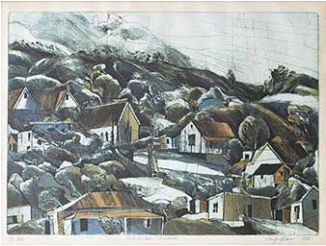
Artworks from the Collection of Rae and Peter Aimer



211 Stanley Palmer
Tower
bamboo engraving, 2/60
title inscribed, signed and dated 1979
585 x 420mm
\$600 – \$1000



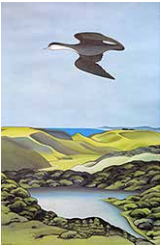
212 Stanley Palmer
Ponsonby – August 1972
bamboo lithograph, 9/50
title inscribed, signed and dated 1972
400 x 530mm
\$500 – \$1000



213 Stanley Palmer
Hillside Town – Kohukohu
bamboo engraving, 11/50
title inscribed, signed and dated 1973
425 x 570mm
Provenance: Purchased from New
Vision Gallery, 1973.
\$600 – \$1200



214 Stanley Palmer
Nikau – Karamea
lithograph, 20/60
title inscribed, signed and dated 2004
370 x 680mm
\$800 – \$1500



215 Don Binney
Kawaupaku, Te Henga
colour print of the original painting held in the
University of Auckland Art Collection
signed and dated '67 on the plate, published
by Waitākere Ranges Protection Society, 1983.
630 x 440mm
\$400 – \$800



216 Pat Hanly
Bride and Groom
screenprint, 8/50
title inscribed, signed and dated '90
710 x 520mm
Provenance: Purchased from The
Pumphouse, 1994.
\$4000 – \$6000



217 Louise Henderson
Moon III
lithograph, 23/25
title inscribed, signed and dated '85
570 x 380mm
\$600 – \$900



218 Terry Stringer
The Five Senses
cast and patinated bronze, 1/10
signed and dated '96
290 x 85 x 85mm
\$5000 – \$8000



219 Terry Stringer
Keep Sake
cast bronze, AP II
title inscribed, signed and dated '93
D. 125mm
Provenance: Purchased from Ferner Gallery,
September 1994.
\$1000 – \$2000



220 Artist unknown
AD 2000
cast bronze medallion
title inscribed
D. 120mm
\$400 – \$800



221 Murray Swan

Fluid Flight

stainless steel and titanium
title inscribed, signed and dated '07
on artist's original label affixed verso
290 x 1270 x 40mm
Provenance: Purchased from Palette
Contemporary Art Gallery, April 2007.
\$1000 – \$2000



222 Murray Swan

Poly Boat

carved wood and metal
title inscribed, signed and dated '99
on artist's original label affixed verso
120 x 210 x 60mm
Provenance: Purchased from The
Pumphouse, 1999.
\$300 – \$500



223 Murray Swan

Spinner Boat

carved wood and metal
title inscribed, signed and dated '99
on artist's original label affixed verso
230 x 100 x 45mm
Provenance: Purchased from The
Pumphouse, 1999.
\$300 – \$500



224 Marilyn Webb

River terraces and snow, Central Otago
hand coloured monoprint
title inscribed, signed and dated 1988
195 x 245mm
\$500 – \$800



225 Charles Blackman (Australia 1928–2018)

Bamboo

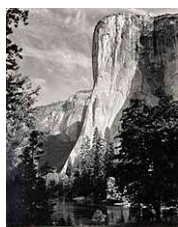
original etching, 22/50
title inscribed and signed
235 x 285mm
\$300 – \$500



226 Roy Dalgarno

India Suite XVI

etching, 3/50, 2nd state
title inscribed, signed and dated '84
315 x 355mm
\$200 – \$400



227 Ansel Adams

El Capitan, Yosemite National Park, California
black and white photograph accompanied by
frontispiece inscribed printed by Alan Ross from
Ansel Adams' original negative to his exacting
specifications under the supervision of the Ansel
Adams Publishing Rights Trust
240 x 187mm
\$500 – \$800



228 Shirley Markham

Ruapehu

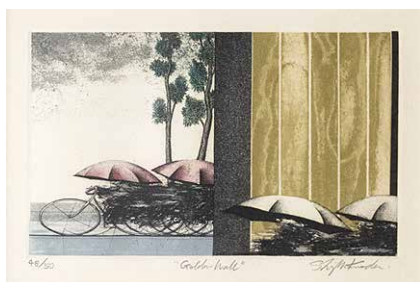
etching, 6/50
title inscribed and signed
545 x 360mm
Provenance: Purchased from New Vision Gallery,
December 1983.
\$200 – \$400



229 J. Reynolds

Untitled No. 15

oil on board
signed and dated '91
885 x 640mm
Purchased: Compendium Gallery, Auckland.
\$400 – \$800



230 Shigeki Kuroda (Japanese b. 1953)

Golden Wall
etching, 48/50
title inscribed and signed
185 x 270mm
\$150 – \$300



231 Leanne Reid Wanjidari (Australia, b. 1966)

Untitled

mixed media on paper
signed
170 x 185mm
\$500 – \$800



232 Alyson Stoneman

Mt Hobson

etching, 1/50
title inscribed, signed and dated '81
365 x 525mm
\$100 – \$200



233 Ted Kindleysides

Railway House
oil on board
signed and dated '93
150 x 580mm
\$400 – \$700



234 Brenda Hartill

Trainscape
etching, 52/100
title inscribed, signed and dated 1985
825 x 620mm
Provenance: Purchased from Portfolio
Gallery, Auckland, December 1985.
\$300 – \$600



235 Philippa Blair

White Feathers, Hearts and Tipi
etching, 8/25
title inscribed, signed and dated 1982
385 x 280mm
\$100 – \$200



236 Pam Blok

No. 8 Waiting
oil on board
title inscribed on original Pumphouse 1994 North
Shore Art Awards label 'The James Berry Memorial
Award for NZ Landscape'
135 x 235mm
\$300 – \$600



237 Doug Watkins

Male Nude
pastel on paper
signed and dated 1993; title inscribed on artist's
original label affixed verso
645 x 367mm
\$150 – \$300



238 John Drawbridge

Approach to St. Andre Artois
etching, 33/50, printed 1981
title inscribed, signed and dated 1960
630 x 510mm
Provenance: Purchased from New Vision Gallery,
1981.
\$200 – \$400



239 Alan Gilderdale

Untitled
oil on canvas
signed and dated '87
772 x 650mm
\$800 – \$1500



240 Alan Gilderdale

The Two Clowns
graphite, watercolour and gouache
signed and dated '88
610 x 885mm
Purchased: Proba Gallery, 1988.
\$300 – \$600



241 Alan Gilderdale

Megalith 3
gouache and collage on paper
signed and dated '82
365 x 515mm
\$200 – \$400



242 Arthur Lloyd

Sheoah Reflected
lithograph, 82/90
signed
690 x 495mm
\$150 – \$300



243 Vincent van Gogh

Boats on the Beach
exhibition poster, Rijksmuseum, Netherlands
500 x 695mm
\$50 – \$100



244 L S Lowry

Village Square
exhibition print, Glasgow Art Gallery
625 x 800mm
\$50 – \$100

New Collectors Art



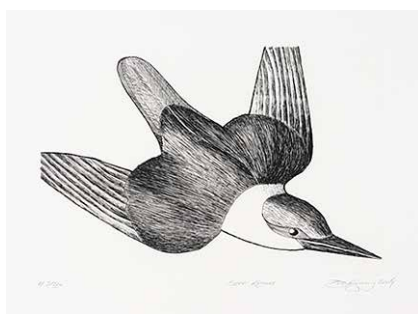
245 Don Binney
Grackle, Veracruz
silkscreen print, 1970
630 x 455mm
Provenance: Private collection, Auckland.
\$3500 – \$5500



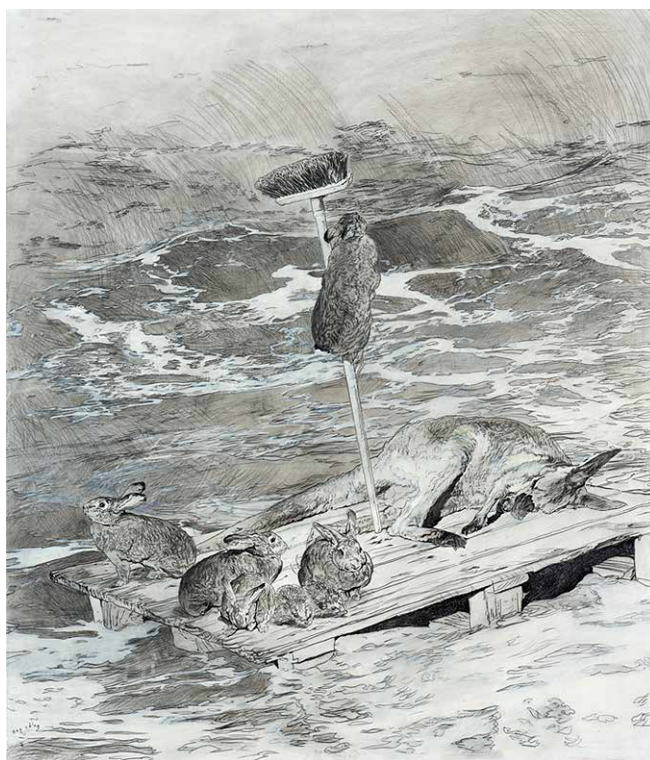
247 E. Mervyn Taylor
Giant Kauri
wood engraving, edition of 25
title inscribed and signed
180 x 125mm
\$5000 – \$7000



249 Stanley Palmer
From Hells Heart I Stab At Thee, Melville, Moby-Dick
colour screenprint
signed and dated 2010
630 x 900mm
\$800 – \$1500



246 Don Binney
Sofa Kotare
etching, AP/II/XXIV
title inscribed, signed and dated 2004
270 x 365mm
\$2500 – \$4000



248 Ray Ching
Adrift
graphite, pencil, ink, conte, carbon, oil, liquin on board
signed and dated 2018 verso, title inscribed on original Artis Gallery label affixed verso
1070 x 910mm
\$12 000 – \$18 000



250 Stanley Palmer
Harbour – Auckland
colour woodcut, 10/60
title inscribed, signed and dated 1983
470 x 600mm
\$500 – \$800



251 Stanley Palmer
Morning – Boat Sheds
colour woodcut, 10/60
title inscribed, signed and dated 1983
470 x 600mm
\$600 – \$1000



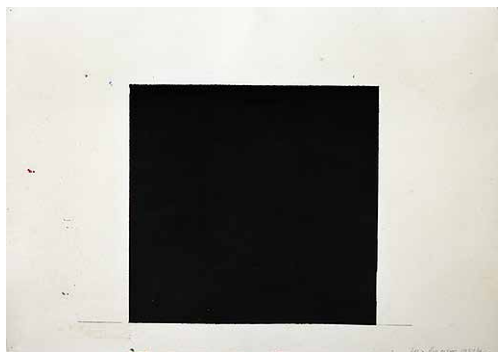
252 Patricia France
Still Life
 oil on board
 signed; inscribed a flower on label affixed verso
 450 x 370mm
 \$4500 – \$6500



253 Pat Hanly
Life Goes On
 colour screenprint, 20/50, 2nd State
 title inscribed, signed and dated '81
 and inscribed *Golden Age*
 510 x 580mm
 \$3000 – \$5000



254 Pat Hanly
Nude
 pastel
 signed and dated 1977
 140 x 170mm
 \$2500 – \$4000



255 Max Gimblett
Untitled
 acrylic on paper
 signed and dated 1982/86
 580 x 765mm
 \$3000 – \$5000



256 Michael Hight
Parihaka Rd
 colour screenprint, A/P
 title inscribed signed and dated '09
 550 x 970mm
 \$2000 – \$3000



257 Séraphine Pick
The Paddock (No Sound)
 oil on canvas
 signed and dated 2001; title inscribed on original
 Brooke Gifford Gallery label affixed verso
 300 x 380mm
 \$4000 – \$6000



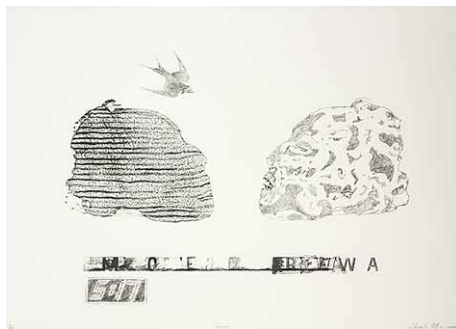
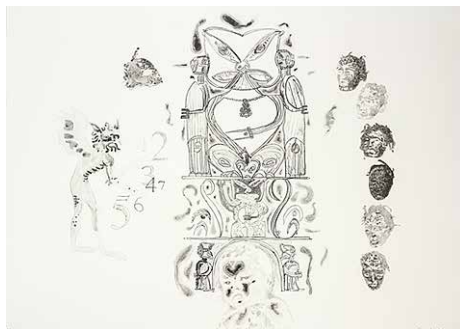
258 Amanda Gruenwald
Lilac, Orange, Green
 acrylic, oil and spray paint on canvas
 title inscribed, signed and dated 2022 verso
 1075 x 835mm
 \$10 000 – \$15 000



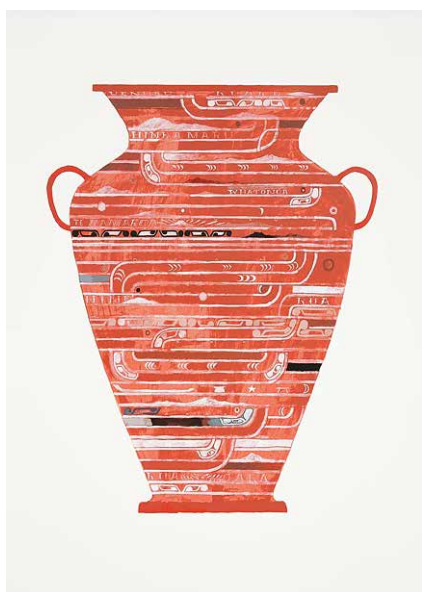
259 Gretchen Albrecht
Garden Path (2)
 watercolour
 signed and dated 1971; title
 inscribed, signed and dated verso
 755 x 550mm
 \$10 000 – \$15 000



260 Gretchen Albrecht
Gabriel
 acrylic and oil on canvas
 title inscribed, signed and dated 2020 verso
 500 x 995mm
 \$30 000 – \$40 000

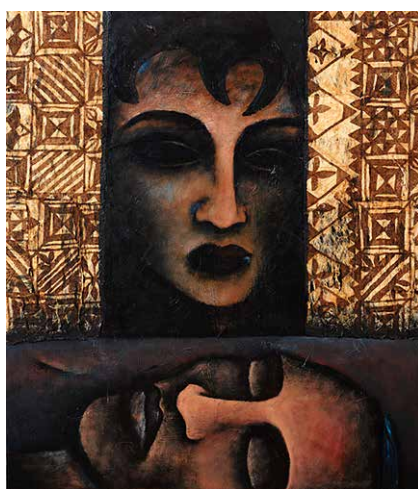


261 Shane Cotton
Pararaiha, Kikorangi, Veil, Moerewa, A Walk in Paradise, Welcome
 complete set of lithographs, 11/40
 title inscribed, signed and dated 2004
 560 x 760mm
 \$7000 – \$10 000



262 Shane Cotton

Pikopiko I Whiti
screenprint on Lanaquarelle 640gsm paper, 2/40
title inscribed, signed and dated 2022
1050 x 760mm
\$6500 – \$8500



263 Nanette Lela'ulu

Farewell Departed One
tapa collage and oil on canvas
title inscribed, signed and dated '96 verso
1220 x 1055mm
\$1500 – \$2500



264 Emily Karaka

Tamaki Makaurau, Crown Settlement
oil on bark cloth
signed, title inscribed and variously inscribed
960 x 875mm
\$2000 – \$3000



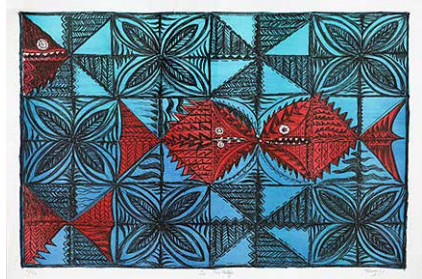
265 Séraphine Pick

Untitled
oil on canvas
signed and dated 2004
230 x 305mm
\$4000 – \$6000



266 Fatu Feu'u

O loo ile Alii le fa'a ola taga
mixed media on canvas
signed and dated 2000; title inscribed, signed and dated verso
910 x 1365mm
\$5000 – \$8000



267 Fatu Feu'u

I'a Fa'atalofa
colour print, 21/126
title inscribed, signed and dated '95
540 x 755mm
\$600 – \$1000



268 Nigel Brown

Poetry Rising
mixed media on paper
title inscribed, signed and dated 2015
590 x 410mm
\$3000 – \$5000



269 Niki Hastings-McFall

There Is a Green Hill – Nuclear Rosary Series
plastic flowers, rosary beads, crucifix, sterling silver and fishing line
installation size variable
\$2500 – \$3500



270 Peter Robinson

Potz Blitz
oil on canvas
title inscribed, signed and dated '95
240 x 300mm
\$1600 – \$2800



272 Fiona Pardington

Taranaki Heitiki with Mussell Shell Eyes
gelatin silver archival hand print, edition of 5 (2002)
565 x 430mm
\$7500 – \$12 000



274 Steve Harris

Highland Tent (3 Lights)
acrylic on canvas, 2010
signed
690 x 1150mm
\$10 000 – \$15 000



271 Fiona Pardington

Colin's Bearded Iris, Seaweed and Tipple Glass, McCahon 2013
pigment inks on Epson hot press natural, edition of 10
288 x 385mm
\$6000 – \$10 000



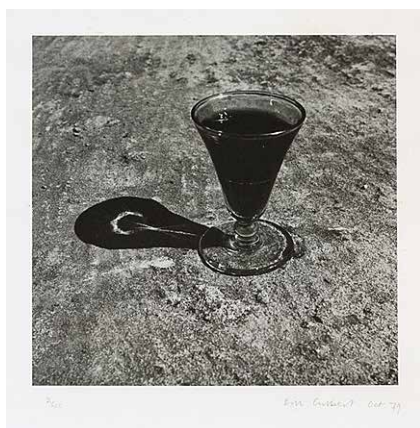
273 Michael Parekōwhai

Omega Centauri
framed c-type photograph
edition of 10
590 x 590mm
Provenance: Michael Lett Gallery
\$5000 – \$8000



275 Bill Culbert

Decanter II
silkscreen print, AP/II/XXIV
title inscribed, signed and dated '04
550 x 375mm
\$2000 – \$3000



276 Bill Culbert
Small Glass Pouring Light
photo-lithograph, 2/100
signed and dated Oct '79
640 x 450mm
\$2000 – \$3000



277 Ann Shelton
0900 No. 1 from the series a girl in every port
type c print (1999)
710 x 900mm
\$2000 – \$3000



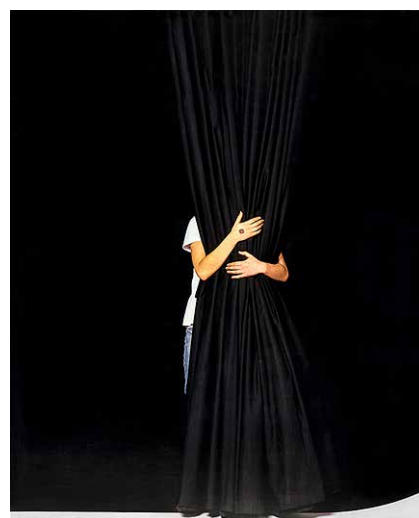
278 Ann Shelton
Cruise, 1999
type c Print
900 x 720mm
\$2000 – \$3000



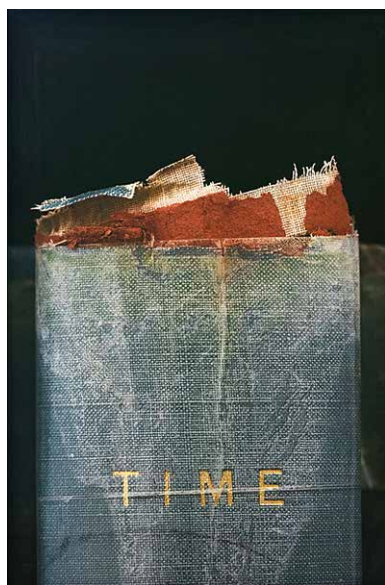
279 Ans Westra
Untitled
black and white photo
300 x 300mm
\$4000 – \$6000



280 Joe Sheehan
Bulb
archival photographic print on 310gsm
Ilford Galerie Smooth Cotton Rag, 5/50
title inscribed, signed and dated 2024
on original Glorious label affixed verso
420 x 297mm
\$1000 – \$2000



281 Layla Rudneva-MacKay
I Don't See You Today...
type C print, edition of 8 (2006)
1515 x 1190mm
\$4000 – \$6000



282 Mickey Smith
Time, 2009
archival pigment print on Hahnemuhle
Photo Rag, 10/10
1160 x 755mm
Provenance: Purchased Sanderson Gallery.
\$7000 – \$10 000



283 Peter Peryer
Edward Bullmore's Launch
gelatin silver print
440 x 290mm
\$4000 – \$6000



284 Robin Morrison
Christina and Bert Lewis and His Brothers, Shack and Bob, Deborah Bay, Otago, 1979
type C print
165 x 250mm
\$2000 – \$3000



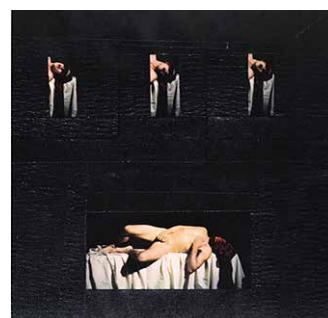
285 Robin Morrison

Untitled
type C print
165 x 250mm
\$2000 – \$3000



286 Sara McIntyre

Alan's Madonna
type C print, 8/10
title inscribed and dated 2015 verso
210 x 240 mm
\$2500 – \$4500



287 Christine Webster

Possession & Mirth
9 colour laser prints in original artist's box, 1992
367 x 267 x 42mm
\$500 – \$800



288 J.S. Parker

Rarangi Evening Light
oil on canvas
title inscribed and signed verso
1200 x 1200mm
\$5000 – \$8000



289 J.S. Parker

Plain Song – From the Road
mixed media on paper
title inscribed, signed and dated '95
1200 x 790mm
\$6000 – \$9000



290 Tony De Lautour

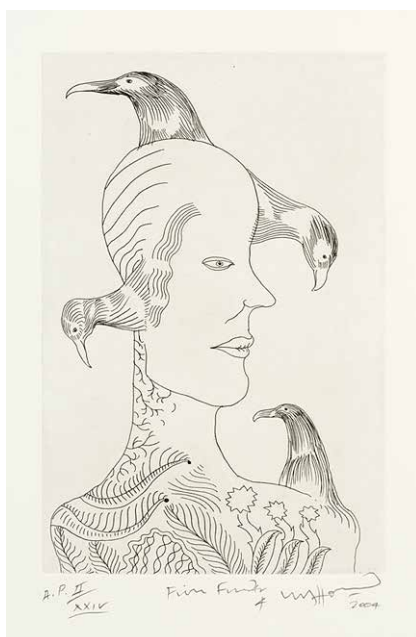
Research
acrylic on canvas board
signed, titled and dated
original gallery label affixed, verso
152 x 230mm
Provenance: purchased from the Gillford Gallery,
Christchurch.
\$1000 – \$2000



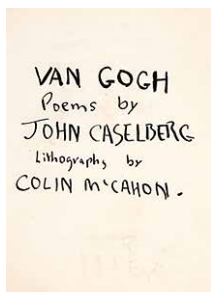
291 Tony De Lautour
Operation Overload
acrylic canvas on board
title inscribed, signed and dated
original gallery label affixed, verso
230 x 152mm
Provenance: Purchased from
Gillford Gallery, Christchurch.
\$1000 – \$2000



295 Colin McCahon
Tomorrow will be the same but not as this is
screenprint with archival ink on BFK Reives
Italian 300gsm art paper, McCahon House
Centenary Edition 18/100
signed on the original plate
1200 x 800mm
\$10 000 – \$16 000



292 Bill Hammond
Fish Finder 4
etching, APII/XXIV
title inscribed, signed and dated
550 x 375mm
\$4000 – \$6000



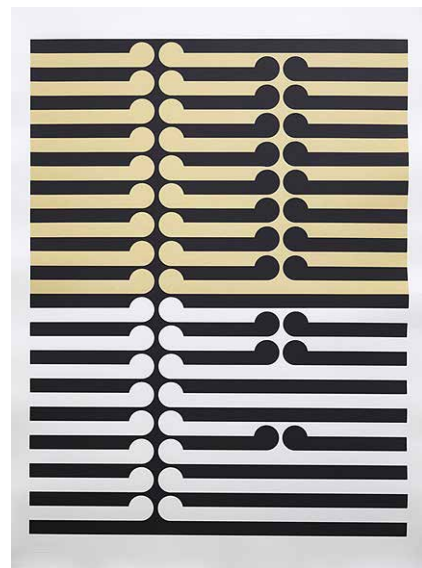
296 Colin McCahon
Van Gogh - Poems by John Caselberg
five lithographs, framed in two parts, comprising of
a frontispiece and four pages
title inscribed, signed and dated Sept 1957 on the
plate
357 x 250mm: each
\$8000 – \$14 000



293 Bill Hammond
Untitled
screenprinted poster
signed and dated 1987 on the print
1080 x 1090mm
\$1000 – \$1500



294 Bill Hammond
Jingle Jangle Morning
offset print
535 x 810mm
\$400 – \$600



297 Gordon Walters
Tautahi, 1970
screenprint on archival paper, 100/100 (2024)
indented with Walters Estate chopmark; title and
edition number inscribed on original label verso
1070 x 800mm
\$5000 – \$10 000



298 Guy Stuart

Rising Coastal Cliff Face

oil on canvas

title inscribed, signed and dated 2008 verso

1985 x 835mm

Provenance: Private collection, Auckland, Acquired from Charles Nodrum Gallery, Melbourne

\$5000 – \$8000



302 Karl Maughan

Be Still My Soul

screenprint on 300gsm Fabriano fine art paper, PP

title inscribed and signed

560 x 560mm

\$2000 – \$3000



304 Cora-Allan Lafaiki Twiss

Ipipiri

mixed media on board

signed with artist's initials CA and dated '23;

inscribed Ipipiri N°3 verso

205 x 255mm

\$1000 – \$2000



299 Noel McKenna (Australian, 1956-)

Bird on a Tree

oil and enamel on wood

signed and dated '98

608 x 170mm

Exhibited: 'New Paintings by Noel McKenna',

Bowen Galleries, Wellington, November 1988.

Provenance: The Fairfield Trust Collection.

\$5000 – \$8000



303 Kura Te Waru Rewiri

Putiputi kaneihana e ...

oil on canvas

title inscribed and signed with artist's initials K.T.R.

and dated 9/96; title inscribed, signed and dated

verso

695 x 1715mm

Illustrated: Kura Te Waru Rewiri 'A Maori Woman

Artist' by Camilla Highfield

\$4000 – \$6000



300 Philip Clairmont

Interior with Vase on Table

oil pastel on paper

title inscribed in another's hand verso; original

Webb's label affixed verso

450 x 600mm

Provenance: Private collection, Auckland. Acquired

from Webb's, 9 December 2003, Lot No. 122.

\$6000 – \$9000



301 Philip Clairmont

Large still life with vase, palette and objects

linocut (A proof), edition 1/5 (turquoise)

title inscribed, signed and dated '80; signed and

dated 1980 on the plate

1030 x 770mm

\$4000 – \$6000



305 Simon Kaan

Untitled

oil on wood, engraving

signed and dated 2008 verso

1000 x 800mm

\$4000 – \$7000



306 Darryn George
Garden of Eden N°31
acrylic and pastel on canvas
signed with artist's initials D.W. G; title inscribed,
signed and dated 2019 verso
405 x 300mm
\$3000 – \$5000



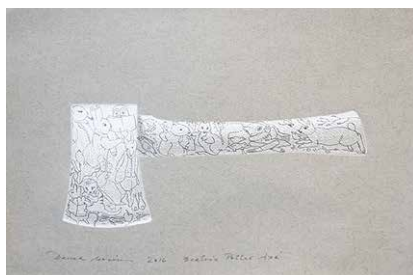
307 Dave Gibbons
Sea Change
acrylic on canvas
title inscribed and signed on artist's original label
affixed verso
1800 x 900mm
\$3000 – \$5000



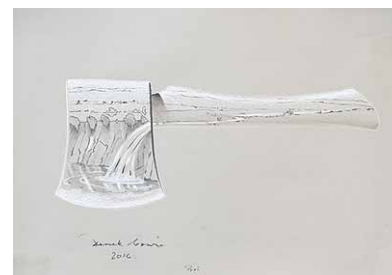
308 David Armitage
Untitled
watercolour
signed and dated '75
305 x 207mm
\$500 – \$800



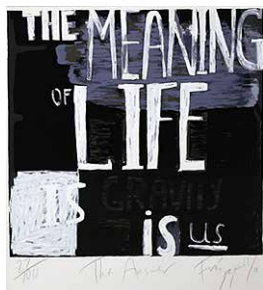
309 David Noonan
Untitled
silkscreen print on paper collage, edition of 45
560 x 420mm
\$1000 – \$2000



310 Derek Cowie
Beatrix Potter Axe
graphite and crayon on paper
title inscribed, signed and dated 2016
295 x 415mm
\$500 – \$1000



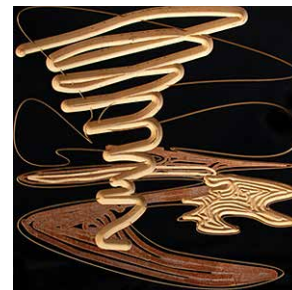
311 Derek Cowie
Pool
graphite and crayon on paper
title inscribed, signed and dated 2016
295 x 415mm
\$500 – \$1000



312 Dick Frizzell
The Answer
lithograph, 27/100
title inscribed, signed and dated '18
575 x 515mm
\$1000 – \$1500



313 Dick Frizzell
Untitled
four screenprints, each A/P
180 x 275mm: each; 745 x 280mm: overall
\$400 – \$800



314 DJ Simpson
Mr Bezier
laminate on birch plywood (black), 22/25
signed verso
500 x 500mm
\$1000 – \$2000



315 DJ Simpson
Mr Bezier
laminate on birch plywood (red), 10/25
signed verso
500 x 500mm
\$1000 – \$2000



316 Eana B. Jeans
Bush Rhythm and Sing
oil on board
signed with artist's initials EBJ; title inscribed and
signed on artist's original label affixed verso
525 x 450mm
\$1500 – \$2500

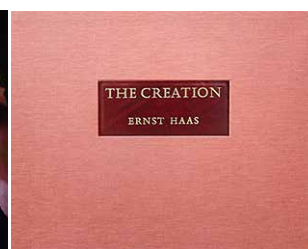


317 Eana B. Jeans
Untitled – Edge of the Lake
oil on board
signed
395 x 460mm
\$1200 – \$2000



318 Elliot Collins

Across the Narrow Sea
giclee print on Ilford gold matte paper with acrylic
embellishments, 17/50, diptych
signed and dated 2014
555 x 700mm (each)
\$1500 – \$2500



319 Ernst Haas

The Creation
boxed portfolio of ten dye-transfer prints, number 201
in an edition of 300 (1981)
signed and numbered 201 on original coversheet;
each print signed
325 x 495mm: each print
\$7000 – \$10 000



320 Gerhard Richter

Abstrakte Bilder (No Text)
offset lithograph, printed 2004
690 x 890mm
\$1000 – \$1500



321 Frank Dean

Condition Red
acrylic on board
signed and dated '73; title inscribed signed and
dated 1973 verso
590 x 1205mm
\$4000 – \$6000



321A Philip Trusttum

Thumbs and Head
lithograph, triptych, 2/5
title inscribed, signed and dated
1985
580 x 1050mm each; 1740 x
1050mm: overall
\$3000 – \$4500



322 Alan Taylor

Balmoral
acrylic on canvas
signed, titled and inscribed
(dedication) verso 'Maungwhau' 'Tui'
610 x 455mm
\$800 – \$1200



323 Alan Taylor

Huia-Manukau Hd's
acrylic on canvas
signed, titled and inscribed
'M.K.R.F. Tui' verso
510 x 405mm
\$600 – \$1000



324 Alan Taylor

Mt. Eden
acrylic on canvas
signed, titled and inscribed
'T.M.K.R.F.B' 'Tui' verso.
610 x 455mm
\$800 – \$1200



325 Alan Taylor

Rangitoto Island
acrylic on canvas
signed, titled and inscribed 'B M
L F KB TM'
508 x 406mm
\$600 – \$1000



326 Grahame Sydney

Road to Lauder
lithograph, 9/50
title inscribed, signed and dated Feb 2007
535 x 630mm
\$1800 – \$2800



327 Brent Wong

Landscape and Farm Building
colour print
445 x 905mm
\$400 – \$600



328 Jane Zusters

Space Age Giotto
oil on canvas
title inscribed, signed and dated '85
1325 x 1325mm
\$3000 – \$5000



329 Anne Riethmaier

Geometric Cohesion

acrylic and liquid glass on board
title inscribed, signed and dated 2023 verso
620 x 500mm
\$600 – \$850



330 Anne Riethmaier

Tapestry

acrylic and liquid glass on board
title inscribed, signed and dated 2023 verso
700 x 500mm
\$600 – \$900



331 Jean Horsley

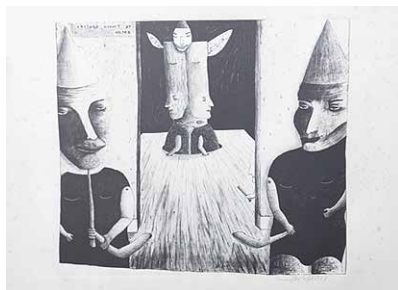
Bird Valley

oil on board, diptych
signed; title inscribed, signed and dated '91 verso
760 x 885mm: overall
\$1000 – \$2000



332 Jenny Dolezel

Someone Else, With My Fingerprints
colour lithograph, 1/30
title inscribed, signed and dated 1995
535 x 720mm
\$600 – \$1200



333 Jenny Dolezel

Another Night at Home

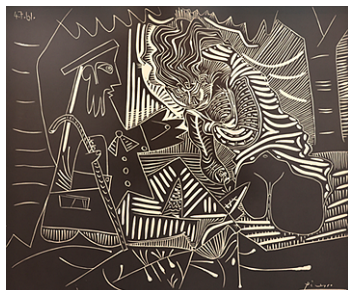
lithograph, 2/20
title inscribed on the plate, signed and dated 1987
680 x 880mm
\$500 – \$1000



334 Jo Baer

Amphora Frieze No. 2

colour screenprint, 21/30, 2004
397 x 560mm
\$1200 – \$1600



335 Pablo Picasso

Luncheon on the Grass
lithograph

signed on the plate and dated 4.7.61.
575 x 680mm
\$1500 – \$2000



336 Joan Miro

Illustrated Poems- "Parler Seul" XIV, 2004

offset lithograph
600 x 450mm
\$900 – \$1500



338 Jeff Thomson

Map of NZ

galvanized steel with acrylic paint
signed and dated 2004 verso
North Island = 750 x 510, South = 900 x 300,
Stuart Island = 80 x 60mm
1600 x 750mm
\$4500 – \$6500



337 Joanna Braithwaite

Untitled from the series Feathered Feats

oil on canvas, triptych
each signed and dated '04 verso
200 x 235mm: each
\$2400 – \$4000



339 Ray Haydon

Air
powder-coated stainless steel, 2013
2400 x 1500 x 1500mm: installation size
Provenance: Private collection, Auckland. Commissioned from the artist in 2013.
\$20 000 – \$35 000



344 Yayoi Kusama

With All My Flowering Heart
offset lithograph in colours on skate decks (in original packaging), triptych, 2014, 499/500
805 x 205mm: each
Provenance: Acquired directly from The Broad Museum, Los Angeles.
\$2500 – \$3500



345 Murray Grimsdale

Untitled
acrylic on wooden screen, three panels
signed and dated '77
1690 x 395mm (each panel)
\$3000 – \$5000



340 Greer Twiss

Apron
lead and found objects
signed and dated '90
1110 x 360 x 50mm
\$5000 – \$8000



342 Terry Stringer

Untitled
cast bronze, 3/10
signed and dated 2006
H. 320mm
\$4000 – \$6000



341 Terry Stringer and John Dawson

Not For Me
tall ceramic vase made by John Dawson with painted and glazed decoration by Terry Stringer
impressed John Dawson mark to the base, also inscribed on the base Terry Stringer, 2010 and numbered 3/5
H. 520mm
\$500 – \$800



343 Guy Ngan

Bamboo Totem
marker pen on bamboo, stone base
265 x 165 x 165mm
\$600 – \$1200



346 Pauline Yearbury (attributed)

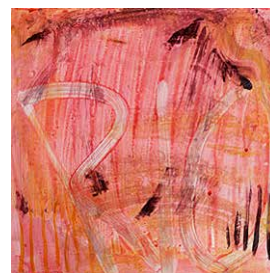
Maui
kauri timber with acrylic
title inscribed verso
Diam. 295mm
\$800 – \$1200



347 Hollie O'Neil
Angels Flight
pigments and epoxy polymer on glass
title inscribed, signed and dated 2022 verso
Diam. 600mm
\$800 – \$1200



348 John Edgar
Untitled – stone
granite, copper
50 x 120 x 135mm
\$1000 – \$2000



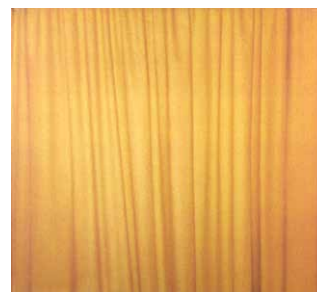
349 White Saucer (Stella Corkery and Alan Holt)
Rio
original album cover painted by Stella Corkery
title inscribed; title inscribed and dated on artist's
original label affixed verso
310 x 310mm
\$800 – \$1500



350 Kim Meek
Shibuya
archival digital print, edition of 3, 2011
1000 x 1000mm
\$1500 – \$2500



351 Kim Meek
Untitled
archival digital print, edition of 3, 2011
1000 x 1000mm
\$1500 – \$2500



352 Leigh Martin
Untitled
acrylic on linen
title inscribed, signed and dated 2002 verso
1220 x 1220mm
\$1500 – \$2500



353 Marian Maguire
James K Baxter and Odysseus Explore the Upper Whanganui
etching, 11/25
title inscribed signed and dated 2010
380 x 410 mm
\$1000 – \$2000



354 Mark Siebert
Fan Letters (To Robbie Williams)
digital plan print
1190 x 840mm
\$1500 – \$2000



355 Mary McIntyre
The pink couch
coloured pencil on paper
title inscribed, signed and dated Aug '85
355 x 540mm
\$1000 – \$2000



356 Putu Sutawijaya
Energi dalam Kesepian
mixed media on canvas
title inscribed, signed and dated 2002 verso
2000 x 1450mm
\$3000 – \$6000



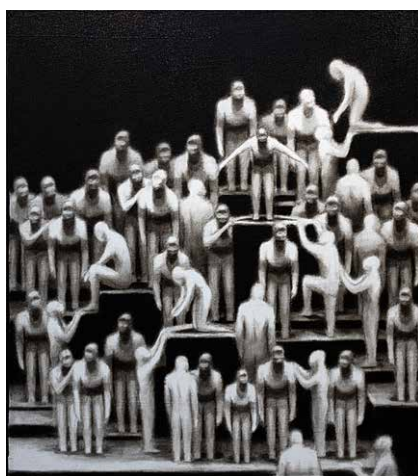
357 Quentin MacFarlane
Untitled
gouache on paper
signed
550 x 760mm
\$1000 – \$2000



358 Richard Lewer
Untitled
watercolour on paper
555 x 748mm
\$1500 – \$2500



359 Richard McWhannell
Moon, Freeman's Bay, Auckland
oil on canvasboard
220 x 293mm
\$1200 – \$1800



360 Thomas Elliot
Untitled
acrylic on hessian laid onto canvas
signed and dated '07 verso
1800 x 1600mm
\$4000 – \$6000



361 Robert Ellis
Maungawhau, Mt Eden
ink and watercolour on paper
title inscribed, signed and dated 1998
300 x 410mm
\$1500 – \$2500



362 Robert Ellis
Untitled
mixed media and collage on paper
signed and dated 1987 and inscribed For Russell
on his 70th birthday, 2004
210 x 296mm
\$1000 – \$2000



363 Ross Ritchie
See Mother
oil on canvas
title inscribed, signed and dated 1988 verso
750 x 605mm
\$800 – \$1200



364 Tom Esplin
El Bosque, Spain
oil on board
signed; title inscribed on artist's original label
affixed verso
275 x 400mm
\$2000 – \$3000



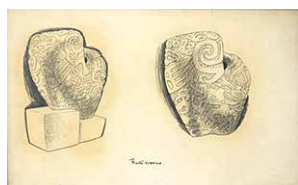
365 Thornton Walker
Two Bowls In Landscape (The Enduring Body)
oil on canvas
title inscribed signed and dated 2001 on original
Milford Galleries label affixed verso
1065 x 915mm
\$2000 – \$3000



366 Russell Jackson
Cornwall Park Birds
oil on board
title inscribed, signed and dated 2008; dated June
2008 verso
490 x 585mm
\$1000 – \$2000



367 Roy Dalgarno
Mother India
lithograph
signed, titled and numbered 14/22
435 x 540mm
\$200 – \$300



368 Russell Clark
Matahourua
graphite on paper, c. 1950
title inscribed
305 x 470mm
\$300 – \$600



369 Whites Aviation
Lake Ohau
photograph
title inscribed and signed, original
label affixed verso.
290 x 370mm
\$100 – \$200



370 Whites Aviation
Lake Matheson
photograph
title inscribed and signed, original
label affixed verso
300 x 375mm
\$100 – \$200



371 Selwyn Muri
Seeing Both Sides
mixed media on paper
title inscribed, signed and dated
1964 verso
330 x 430mm
\$250 – \$450



372 Tara McLeod
Untitled (Age)
wood carving with Riemke Ensing
poem
signed and dated 2005 verso
410 x 365mm
\$150 – \$200



373 Tara McLeod
Untitled (Te Maunga Tapu)
wooden carving with Riemke Ensing poem
signed and dated 2005 verso
\$200 – \$400



374 Paddy Bourke
Untitled
porcelain
signed verso
385 x 180mm
\$100 – \$200



375 Vanessa McKay
Untitled
ceramic wall hanging
signed verso
405 x 350mm
\$100 – \$200



376 Anna Palmer
Flowers and Shells, Mahurangi
pastel on paper
signed and dated '92
500 x 645mm
\$300 – \$600



377 Anna Crichton
Brave New World
pen and ink on paper
title inscribed and signed
245 x 430mm
\$200 – \$400



378 Anna Crichton
Once upon a time a Huia
lithograph
edition 18/20, title inscribed and signed
305 x 290mm
\$150 – \$300



379 Gabrielle Hope
Untitled
mixed media on paper
signed and dated '60
405 x 480mm
\$300 – \$600



380 Henry Moore
Sculptural Objects
lithograph
signed and dated '49 in the plate.
480 x 745mm
\$500 – \$1000



381 Alexis Neal
Pohutukawa
Lithograph, edition 9/10
title inscribed, signed and edition numbered.
460 x 355mm
\$200 – \$400



382 John Ritchie
Nude Study
watercolour and crayon
signed
550 x 410mm
\$500 – \$800



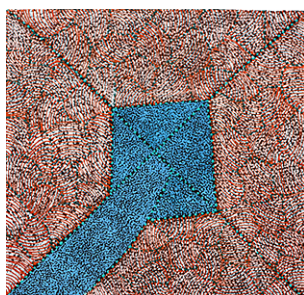
383 Judy Napangardi Watson
(Aboriginal, circa 1925–2016)
Aboriginal Painting
acrylic on canvas
signed verso
238 x 242mm
\$200 – \$400



384 Judy Napangardi Watson
(Aboriginal, circa 1925–2016)
Aboriginal Painting
acrylic on canvas
signed verso
242 x 238mm
\$200 – \$400



385 Ralph Hotere
Black Rainbow at Matauri Bay
lithograph, 22/30
signed and dated '88
550 x 437mm
\$4000 – \$6000



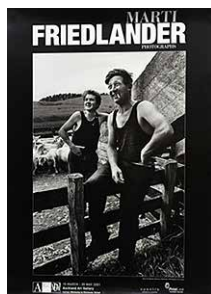
386 Mary Pitjara
Untitled
acrylic on canvas
signed at base
300 x 312mm
\$100 – \$200



387 Neil Pardington
Milan Mrkusich, Painting, 1971
pigment print on hahnemuhle
photo rag baryta, 3/15
from the series *Behind Closed Doors*, 2011. Printed 2012.
240 x 360mm
\$600 – \$1000



388 Olga Spence
Abstract Figures
oil on canvas board, c. 1975
signed
\$200 – \$400



389 Marti Friedlander
Photographs
poster, featuring 'Balclutha, 1969'
Provenance: Auckland Art Gallery
690 x 490mm
\$50 – \$100



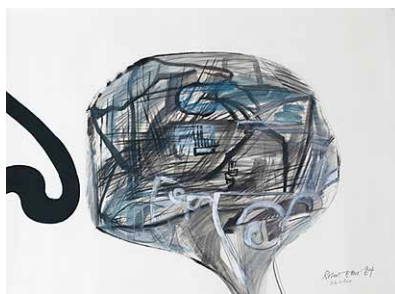
390 Albert H. Burton
Wetere Te Rerenga, wife, and son
Poster, published by Photo-Forum
490 x 445mm
\$50 – \$100



391 Lisa Reihana (attributed)
Untitled
Artspace free art poster
840 x 600mm
\$100 – \$200



392 Billy Apple
Art Free for the Taking
poster
Provenance: commissioned for
Auckland City Art Gallery, 2015
645 x 900mm
\$300 – \$400



393 Robert Ellis
City and River
mixed media on paper
signed and dated '64
560 x 760mm
\$5000 – \$7000



394 Ralph Hotere
Black
lithograph, 11/22
title inscribed, signed and dated 1998
560 x 635mm
\$4000 – \$6000



395 Fred Sandback
Exhibition Poster, 1977
colour offset lithograph
356 x 483mm
Purchased: Brooke Alexander Gallery, New York
\$800 – \$1500



396 Pablo Picasso
The artist before nature
poster
features 'Weeping Woman'
Provenance: Auckland City Art Gallery.
835 x 590mm
\$50 – \$100



397 Poster for the 7th World Congress of Psychiatry
poster, featuring a Hundertwasser print (mounted)
820 x 480mm
Provenance: Printed in Germany.
\$300 – \$500

Conditions of sale

PLEASE NOTE: it is assumed that all bidders at auction have read and agreed to the conditions described on this page. Art+Object directors are available during the auction viewing to clarify any questions you may have.

1. **REGISTRATION:** Only registered bidders may bid at auction. You are required to complete a bidding card or absentee bidding form prior to the auction giving your correct name, address and telephone contact and supplementary information such as email addresses that you may wish to supply to Art+Object.
2. **BIDDING:** The highest bidder will be the purchaser subject to the auctioneer accepting the winning bid and any vendor's reserve having been reached. The auctioneer has the right to refuse any bid. If this takes place or in the event of a dispute the auctioneer may call for bids at the previous lowest bid and proceed from this point. Bids advance at sums decreed by the auctioneer unless signaled otherwise by the auctioneer. No bids may be retracted. The auctioneer retains the right to bid on behalf of the vendor up to the reserve figure.
3. **RESERVE:** Lots are offered and sold subject to the vendor's reserve price being met.
4. **Lots offered and sold as described and viewed:** Art+Object makes all attempts to accurately describe and catalogue lots offered for sale. Notwithstanding this neither the vendor nor Art+Object accepts any liability for errors of description or faults and imperfections whether described in writing or verbally. This applies to questions of authenticity and quality of the item. Buyers are deemed to have inspected the item thoroughly and proceed on their own judgment. The act of bidding is agreed by the buyer to be an indication that they are satisfied on all counts regarding condition and authenticity.
5. **BUYERS PREMIUM:** The purchaser by bidding acknowledges their acceptance of a buyers premium of 19% + GST to be added to the hammer price in the event of a successful sale at auction.
6. **ART+OBJECT IS AN AGENT FOR A VENDOR:** A+O has the right to conduct the sale of an item on behalf of a vendor. This may include withdrawing an item from sale for any reason.
7. **PAYMENT:** Successful bidders are required to make full payment immediately post sale – being either the day of the sale or the following day. If for any reason payment is delayed then a 20% deposit is required immediately and the balance to 100% required within 3 working days of the sale date. We accept payment via Eftpos, cash (under \$5000.00) and direct credit. Visa and MasterCard credit cards are accepted, however a surcharge of 2.5% will be added. Payments over \$10,000.00 must be made by direct credit to our bank account. Our bank details for deposits are 12-3107-0062934-00. Please use your buyer number as transaction reference. Please refer to point 7 of the Conditions of Sale in the catalogue for a detailed description of payment terms.
8. **FAILURE TO MAKE PAYMENT:** If a purchaser fails to make payment as outlined in point 7 above Art+Object may without any advice to the purchaser exercise its right to: a) rescind or stop the sale, b) re offer the lot for sale to an underbidder or at auction. Art+Object reserves the right to pursue the purchaser for any difference in sale proceeds if this course of action is chosen, c) to pursue legal remedy for breach of contract.
9. **COLLECTION OF GOODS:** Purchased items are to be removed from Art+Object premises immediately after payment or clearance of cheques. Absentee bidders must make provision for the uplifting of purchased items (see instructions on the facing page).
10. **BIDDERS OBLIGATIONS:** The act of bidding means all bidders acknowledge that they are personally responsible for payment if they are the successful bidder. This includes all registered absentee or telephone bidders. Bidders acting as an agent for a third party must obtain written authority from Art+Object and provide written instructions from any represented party and their express commitment to pay all funds relating to a successful bid by their nominated agent.
11. **BIDS UNDER RESERVE & HIGHEST SUBJECT BIDS:** When the highest bid is below the vendor's reserve this work may be announced by the auctioneer as sold 'subject to vendor's authority' or some similar phrase. The effect of this announcement is to signify that the highest bidder will be the purchaser at the bid price if the vendor accepts this price. If this highest bid is accepted then the purchaser has entered a contract to purchase the item at the bid price plus any relevant buyers premium.

Important advice for buyers

The following information does not form part of the conditions of sale, however buyers, particularly first time bidders are recommended to read these notes.

- A. **Bidding at auction:** Please ensure your instructions to the auctioneer are clear and easily understood. It is well to understand that during a busy sale with multiple bidders the auctioneer may not be able to see all bids at all times. It is recommended that you raise your bidding number clearly and without hesitation. If your bid is made in error or you have misunderstood the bidding level please advise the auctioneer immediately of your error – prior to the hammer falling. Please note that if you have made a bid and the hammer has fallen and you are the highest bidder you have entered a binding contract to purchase an item at the bid price. New bidders in particular are advised to make themselves known to the sale auctioneer who will assist you with any questions about the conduct of the auction.
- B. **ABSENTEE BIDDING:** Art+Object welcomes absentee bids once the necessary authority has been completed and lodged with Art+Object. A+O will do all it can to ensure bids are lodged on your behalf but accepts no liability for failure to carry out these bids. See the Absentee bidding form in this catalogue for information on lodging absentee bids. These are accepted up to 2 hours prior to the published auction commencement.
- C. **TELEPHONE BIDS:** The same conditions apply to telephone bids. It is highly preferable to bid over a landline as the vagaries of cellphone connections may result in disappointment. You will be telephoned prior to your indicated lot arising in the catalogue order. If the phone is engaged or connection impossible the sale will proceed without your bidding. At times during an auction the bidding can be frenetic so you need to be sure you give clear instructions to the person executing your bids. The auctioneer will endeavour to cater to the requirements of phone bidders but cannot wait for a phone bid so your prompt participation is requested.
- D. **NEW ZEALAND DOLLARS:** All estimates in this catalogue are in New Zealand dollars. The amount to be paid by successful bidders on the payment date is the New Zealand dollar amount stated on the purchaser invoice. Exchange rate variations are at the risk of the purchaser.

Absentee Bid Form

Auction No. 202
The Rae and Peter Aimer Studio Pottery
Collection & New Collectors Art

Opens Friday 29 November 2024
Closes Wednesday 4 December 2024
from 6.00pm
Online bidding only at live.artandobject.co.nz

This completed and signed form authorises
Art+Object to bid on my behalf at the above
mentioned auction for the following lots up to
prices indicated below. These bids are to be
executed at the lowest price levels possible.

I understand that if successful I will purchase
the lot or lots at or below the prices listed on
this form and the listed buyers premium for this
sale (19%) and GST on the buyers premium. I
warrant also that I have read and understood
and agree to comply with the conditions of sale
as printed in the catalogue.

Lot no.	Lot Description	Bid maximum in New Zealand dollars (for absentee bids only)
<hr/>	<hr/>	<hr/>
<hr/>	<hr/>	<hr/>
<hr/>	<hr/>	<hr/>
<hr/>	<hr/>	<hr/>
<hr/>	<hr/>	<hr/>
<hr/>	<hr/>	<hr/>

Payment and Delivery

Art+Object will advise me as soon as is
practical that I am the successful bidder of the
lot or lots described above.

I agree to pay immediately on receipt of this
advice. Payment will be by Eftpos, cash (under
\$5000.00) or direct credit. I understand that
there is a 2.5% surcharge for payment by Visa
or MasterCard credit cards. I understand that
payments over \$10,000.00 must be made by
direct credit to Art+Object's bank account as
shown on the invoice.

I will arrange for collection or dispatch of my
purchases. If Art+Object is instructed by me
to arrange for packing and dispatch of goods I
agree to pay any costs incurred by Art+Object.
Note: Art+Object requests that these shipping
arrangements are made prior to the auction
date to ensure prompt delivery processing.

Please indicate as appropriate by ticking the box:

☐ Absentee Bid

Mr/Mrs/Ms:

First Name:

 Surname:

Address:

Home Phone:

 Mobile:

Business Phone:

 Email:

Signed as agreed:

To register for Absentee Bidding this form must be lodged with Art+Object by 2pm on the day of the published sale time in one of three ways:

1. Email a printed, signed and scanned form to Art+Object: info@artandobject.co.nz
2. Fax a completed form to Art+Object: +64 9 354 4645
3. Post a form to: Art+Object, PO Box 68345 Wellesley Street, Auckland 1141, New Zealand

Artist Index

Adams, Ansel 227
 Albrecht, Gretchen 259, 260
 Apple, Billy 392
 Armitage, David 308

Baer, Jo 334
 Binney, Don 215, 245, 246
 Blackman, Charles 225
 Blair, Philippa 235
 Blok, Pam 236
 Bourke, Paddy 374
 Braithwaite, Joanna 337
 Brown, Nigel 268
 Burton, Albert H. 390

Ching, Ray 248
 Clairmont, Philip 300, 301
 Clark, Russell 368
 Collins, Elliot 318
 Corkery, Stella 349
 Cotton, Shane 261, 262
 Cowie, Derek 310, 311
 Crichton, Anna 377, 378
 Culbert, Bill 275, 276

Dalgarno, Roy 226, 367
 Dean, Frank 321
 De Lautour, Tony 290, 291
 Dolezel, Jenny 332, 333
 Drawbridge, John 238

Edgar, John 348
 Elliot, Thomas 360
 Ellis, Robert 361, 362, 393
 Esplin, Tom 364

Feu'u, Fatu 266, 267
 France, Patricia 252
 Friedlander, Marti 389
 Frizzell, Dick 312, 313

George, Darryn 306
 Gibbons, Dave 307
 Gilderdale, Alan 239, 240, 241
 Gimblett, Max 255
 Grimsdale, Murray 345
 Gruenwald, Amanda 258

Haas, Ernst 319
 Hammond, Bill 292, 293, 294
 Hanly, Pat 216, 253, 254
 Harris, Steve 274
 Hartill, Brenda 234

Hastings-McFall, Niki 269
 Haydon, Ray 339
 Henderson, Louise 217
 Hight, Michael 256
 Hope, Gabrielle 379
 Horsley, Jean 331
 Hotere, Ralph 385, 394

Jackson, Russell 366
 Jeans, Eana B. 316, 317

Kaan, Simon 305
 Karaka, Emily 264
 Kindleysides, Ted 233
 Kuroda, Shigeki 230
 Kusama, Yayoi 344

Lela'ulu, Nanette 263
 Lewer, Richard 358
 Lloyd, Arthur 242
 Lowry, L S 244

MacFarlane, Quentin 357
 Maguire, Marian 353
 Markham, Shirely 228
 Martin, Leigh 352
 Maughan, Karl 302
 McCahon, Colin 295, 296
 McIntyre, Mary 355
 McIntyre, Sara 286
 McKenna, Noel 299
 McKlay, Vanessa 375
 McLeod, Tara 372, 373
 McWhannell, Richard 359
 Meek, Kim 350, 351
 Miro, Joan 336
 Moore, Henry 380
 Morrison, Robin 284, 285
 Muru, Selwyn 371

Neal, Alexis 381
 Ngan, Guy 343
 Noonan, David 309

O'Neil, Hollie 347

Palmer, Anna 376
 Palmer, Stanley 211, 212, 213, 214, 249, 250, 251
 Pardington, Fiona 271, 272
 Pardington, Neil 387
 Parekōwhai, Michael 273
 Parker, J.S. 288, 289

Peryer, Peter 283
 Picasso, Pablo 335, 396
 Pick, Séraphine 257, 265
 Pitjara, Mary 386

Reihana, Lisa (attributed) 391
 Reynolds, J. 229
 Richter, Gerhard 320
 Riethmaier, Anne 329, 330
 Ritchie, John 382
 Ritchie, Ross 363
 Robinson, Peter 270
 Rudneva-MacKay, Layla 281

Sandback, Fred 395
 Sheehan, Joe 280
 Shelton, Ann 277, 278
 Siebert, Mark 354
 Simpson, DJ 314, 315
 Smith, Mickey 282
 Spence, Olga 388
 Stoneman, Alyson 232
 Stringer, Terry 218, 219, 342
 Stringer, Terry and Dawson, John 341
 Stuart, Guy 298
 Sutawijaya, Putu 356
 Swan, Murray 221, 222, 223
 Sydney, Grahame 326

Taylor, Alan 322, 323, 324, 325
 Taylor, E. Mervyn 247
 Te Waru Rewiri, Kura 303
 Thomson, Jeff 338
 Trusttun, Philip 321A
 Twiss, Cora-Allan Lafaiki 304
 Twiss, Greer 340

van Gogh, Vincent 243

Walker, Thornton 365
 Walters, Gordon 297
 Wanjidari, Leanne Reid 231
 Watkins, Doug 237
 Watson, Judy Napangardi 383, 384
 Webb, Marilyn 224
 Webster, Christine 287
 Westra, Ans 279
 Whites Aviation 369, 370
 Wong, Brent 327

Yearbury, Pauline (attributed). 346
 Zusters, Jane 328

The Rae and Peter
Aimer Studio
Pottery Collection
&
New Collectors
Art

ART+OBJECT

Auction No. 202