

ART  
OBJECT

THE 21<sup>ST</sup> CENTURY  
AUCTION HOUSE

**DISPERSE OR WE FIRE.**

3 abbey street, newton, auckland.  
freephone: 0800 80 60 01  
info@artandobject.co.nz  
www.artandobject.co.nz

COVER IMAGE (detail) lot 275

A warning banner associated with the 1951 Waterfront dispute.

## NEW COLLECTORS ART

tuesday 24 june 2008 at 6.00pm

# contents

THE MAGIC OF JANE BRENKLEY	four 04
THE NEW COLLECTORS ART CATALOGUE COMMENCES (viewing times)	thirteen 13
THE PRICE WATERHOUSE COOPERS COLLECTION	sixteen 16
6 DENNIS KNIGHT-TURNER WATERCOLOURS	twenty-six 26
13 NZ TOURIST AND PUBLICITY PHOTOGRAPHS	thirty-four 34

## DECORATIVE ARTS AND THE NEW ZEALAND SALE

wednesday 25 june 2008 at 5.30pm

fifty-nine 59	THE DECORATIVE ARTS AND NEW ZEALAND SALE CATALOGUE COMMENCES (viewing times)
sixty 60	THE LYNN PIETERSON COLLECTION OF TEAPOTS
sixty-three 63	THE ROGER LEFT COLLECTION OF MODEL AIRCRAFT
sixty-five 65	NEW ZEALAND FOLK ART including jane brenkley items
ninety-one 91	DECORATIVE ARTS AND ANTIQUES
103	THE W (BILL) PHILLIPS COLLECTION OF CLOCKS AND TIMEPIECES
116	A+O AUCTION CONDITIONS OF SALE
117	ABSENTEE AND TELEPHONE BIDDING INSTRUCTIONS



Welcome to A+O's third New Collectors catalogue. This catalogue also includes a superb selection of traditional decorative arts and antiques, a number of private collections and a dedicated New Zealand themed section. This is a broad category which encompasses artefacts, kiwiana, folk art and historical items with a New Zealand connection.

One of the many fascinating items in the June 25 New Zealand themed auction is the astronomical telescope (lot 290) that was formerly in the collection of the well known New Zealand diplomat, Sir Guy Richardson Powles. The provenance of this fine optical instrument can be traced to Sir Guy's father who was a keen amateur astronomer. The telescope was purchased from renowned English maker Watson and Sons of High Holborn in England. In a newspaper account of the last periodic traverse of Halley's comet in 1985, Sir Guy recalls observing the 1910 pass of Halley's comet with his grandfather.

The contribution of vintage technology can be seen in a rare and fascinating suite of watercolours by Dennis Knight-Turner that feature in the New Collectors section (lots 47 – 52). This delightful body of six watercolours from 1960 describes the contribution of the printing press to New Zealand society in Colonial times and features recreations of scenes including William Colenso and the Reverend W. Yates printing the First Catechism in Maori in 1830.

19th Century statuary in marble and bronze was once a staple of major decorative arts auction catalogues, but over the years items of high quality have become increasingly scarce. A+O's Manson Estate catalogue of late 2007 was the finest such collection in over a decade. The demand and prices achieved demonstrated the ongoing appeal of traditional decorative sculpture. In the current decorative arts section A+O is pleased to offer a delightful Carrarra marble sculpture *Sea Nymph* by Italian Belle Epoque sculptor Ferdinando Vichi (1875 – 1945).



LEFT: W Watson & Sons telescope and stand  
FAR RIGHT: Dennis Knight-Turner, watercolour detail  
RIGHT: Ferdinando Vichi, *Sea Nymph*





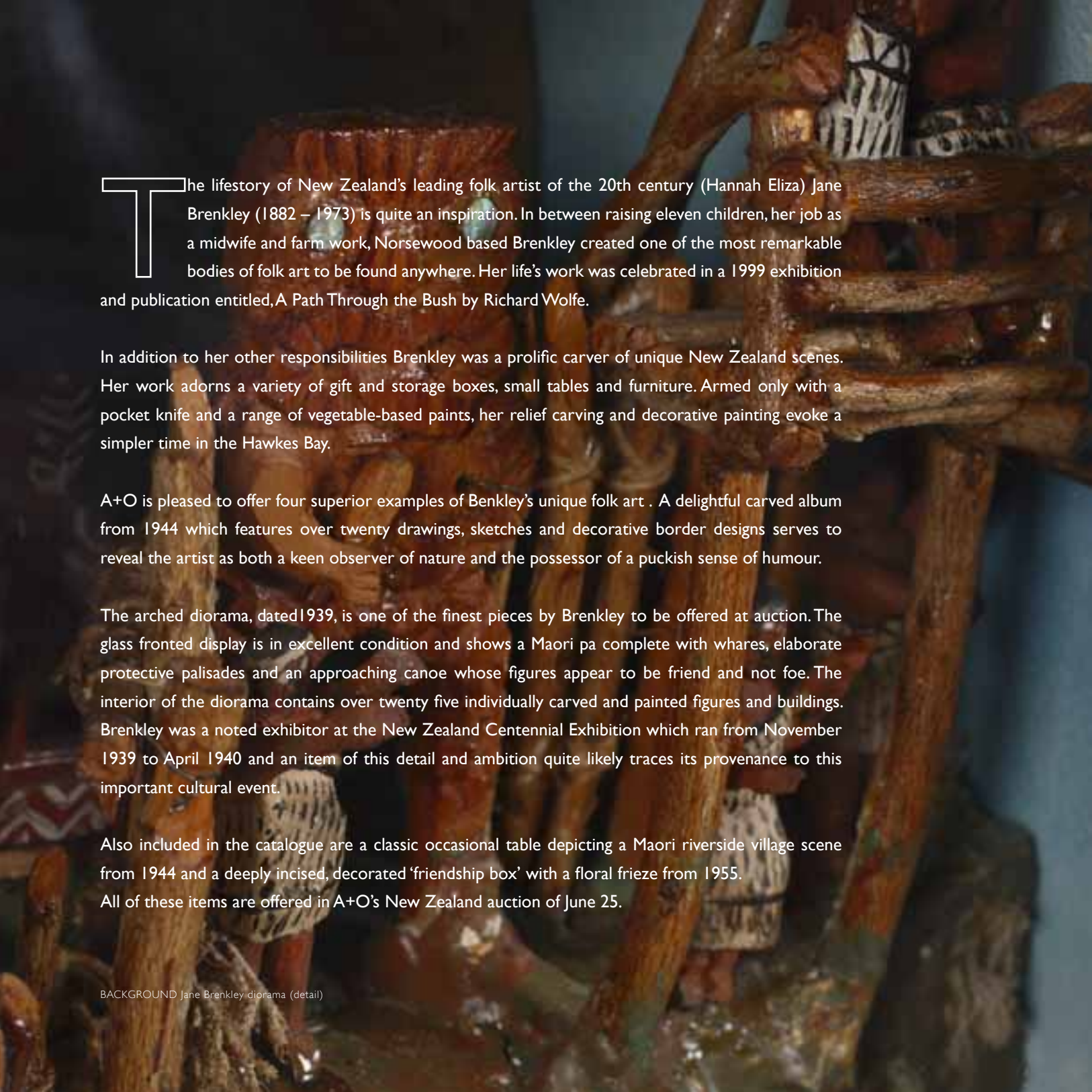
## State of the art.

Inspiration, innovation and dedication lead to the creation of the world's most beautiful cars.  
Experience the ultimate expression of form and function for yourself at Giltrap Prestige.

**Giltrap** **Prestige**

100 Great North Rd, Auckland. Phone 360 3200. [www.giltrap.co.nz](http://www.giltrap.co.nz)



The background of the page is a detailed wooden diorama by Jane Brenkley. It depicts a Maori pa (village) with a canoe and figures. The diorama is made of dark wood and features intricate carvings and painted details. The scene is set in a naturalistic environment with trees and a body of water. The figures in the canoe are clearly visible, and the overall composition is a classic example of New Zealand folk art.

The lifestory of New Zealand's leading folk artist of the 20th century (Hannah Eliza) Jane Brenkley (1882 – 1973) is quite an inspiration. In between raising eleven children, her job as a midwife and farm work, Norsewood based Brenkley created one of the most remarkable bodies of folk art to be found anywhere. Her life's work was celebrated in a 1999 exhibition and publication entitled, *A Path Through the Bush* by Richard Wolfe.

In addition to her other responsibilities Brenkley was a prolific carver of unique New Zealand scenes. Her work adorns a variety of gift and storage boxes, small tables and furniture. Armed only with a pocket knife and a range of vegetable-based paints, her relief carving and decorative painting evoke a simpler time in the Hawkes Bay.

A+O is pleased to offer four superior examples of Brenkley's unique folk art . A delightful carved album from 1944 which features over twenty drawings, sketches and decorative border designs serves to reveal the artist as both a keen observer of nature and the possessor of a puckish sense of humour.

The arched diorama, dated 1939, is one of the finest pieces by Brenkley to be offered at auction. The glass fronted display is in excellent condition and shows a Maori pa complete with whares, elaborate protective palisades and an approaching canoe whose figures appear to be friend and not foe. The interior of the diorama contains over twenty five individually carved and painted figures and buildings. Brenkley was a noted exhibitor at the New Zealand Centennial Exhibition which ran from November 1939 to April 1940 and an item of this detail and ambition quite likely traces its provenance to this important cultural event.

Also included in the catalogue are a classic occasional table depicting a Maori riverside village scene from 1944 and a deeply incised, decorated 'friendship box' with a floral frieze from 1955. All of these items are offered in A+O's New Zealand auction of June 25.



ACT IV

## The sharp end

Very specific rules govern the behaviour of fencers while competing. Less clear-cut, however, are the rules of engagement between friends, especially when the affection of a beautiful young temptress is at stake. This was the sharp end of the rivalry, where the winner would take all but lose what was most precious. En garde. Prêt. Allez.



+ Harry Watson  
*Trouble at the Museum*  
 oils on timber, 2004  
 2060 x 1200 x 315mm  
 \$25 000 - \$35 000

+ Ann Robinson  
*Ice Bowl*  
 cast glass  
 230 x 380 x 380mm  
 \$35 000 - \$45 000





CONTEMPORARY ART + OBJECTS

thursday 18 september

**entries invited**



**Bill Henson**

**Dan Arps**

**Aida Tomescu**

**et al.**

**Luc Tuymans**

**Ildiko Kovacs**

**Saskia Leek**

**Yayoi Kusama**

**Eubena Nampitjin**

**Makinti Napanangka**

**Ai Weiwei**

**Steven Harvey**

**Mike Parr**

**Ed Ruscha**

**Biennale of Sydney**

**TO SUBSCRIBE** [WWW.SUBSCRIBENOW/ARTWORLD/6001](http://WWW.SUBSCRIBENOW/ARTWORLD/6001)





Cappellini Proust chair by Alessandro Mendini [www.cappellini.it](http://www.cappellini.it)

*Georgie Gregg*  
HOME

80 Parnell Road, Parnell, Auckland. 09 368 7777 [info@georgiegregghome.com](mailto:info@georgiegregghome.com)



Peter Peryer

*Ngawha Springs*

gelatin silver print, edition of 2  
345 x 340mm

\$4500 - \$6500

Herbert George Ponting

*The Terra Nova at the Ice Foot*

vintage carbon print, 1911  
500 x 315mm

\$5500 - \$7500

Laurence Aberhart

*Lodge Concord No. 39, Papanui, Christchurch, 1981*

gelatin silver print  
193 x 240mm

\$5500 - \$7500

## IMPORTANT PHOTOGRAPHS

thursday 14 october

**entries invited**



## IMPORTANT PAINTINGS + SCULPTURE

thursday 27 november

**entries invited**

Pat Hanly

*Fire and Hope Vessel*  
acrylic and oil on board, 1987  
480 x 555mm

\$50 000 - \$70 000



1. ichthyostega 2. grid 3. zeal 4. pavlova 5. chisel 6. sapphire 7. pattern 8. serpent 9. slingshot 10. lion 11. quotidian 12. optical 13. superstition 14. clarinet 15. lesson 16. cowboy 17. kilometre 18. libretto 19. crocodile 20. lightning 21. tiptoe 22. hysteria 23. knife 24. worm 25. knock 26. shoelace 27. level 28. juggler 29. frangipani 30. vehement 31. game 32. bezoar 33. tortoise 34. umbra 35. frond 36. versatility 37. locus 38. translate 39. carbohydrate 40. night 41. listed 42. villain 43. bronze 44. kite 45. oxygen 46. vituperation 47. strawberry 48. gurgler 49. strudel 50. crab 51. breast 52. velvet 53. brilliantine 54. delicate 55. thief 56. gauge 57. veil 58. fable 59. dandelion 60. shampoo 61. olden 62. gourmand 63. quadrilateral 64. phytoplankton 65. carousel 66. ability 67. kangaroo 68. handsome 69. position 70. zoology 71. date 72. tile 73. illicit 74. trail 75. badger 76. honeycomb 77. cygnet 78. hairy 79. pirate 80. orchestra 81. knight 82. bingo 83. haystack 84. kidney 85. disciple 86. platter 87. ladder 88. napkin 89. freezer 90. voice 91. quintessence 92. penny 93. improve 94. canvas 95. answer 96. lantern 97. oxen 98. thesis 99. wallow 100. equestrian 101. dalmatian 102. antennae 103. bangle 104. storm 105. notice 106. banner 107. salad 108. tent 109. zenith 110. cat 111. truck 112. foliage 113. germane 114. forty 115. halo 116. signature 117. comedian 118. candle 119. conductor 120. beetle 121. pearl 122. entropy 123. opaque 124. gumboot 125. bikini 126. jasmine 127. shark 128. pot 129. hippy 130. rest 131. whip 132. umbilicus 133. saccharine 134. guru 135. cradle 136. pile 137. trigger 138. cetacean 139. flip 140. beach 141. sail 142. chart 143. brush 144. landslide 145. obstreperous 146. strike 147. pencil 148. cross 149. sweatband 150. bamboo 151. era 152. lily 153. jump 154. knees 155. glib 156. follow 157. forum 158. ember 159. fortuitous 160. needle 161. rice 162. thorn 163. snorkel 164. sunlight 165. corset 166. hedge 167. bloom 168. anatomy 169. bindi 170. heliotrope 171. deadline 172. instinctive 173. parish 174. dog 175. ruler 176. zucchini 177. vacuum 178. occult 179. spirit 180. sight 181. incendiary 182. tombstone 183. octopus 184. arrow 185. biscuit 186. vacillate 187. eel 188. corner 189. vampire 190. style 191. alien 192. protozoa 193. nature 194. stag 195. hulaohop 196. brochure 197. cheetah 198. polysyn 199. stew 200. tell 201. guitar 202. tear 203. hound 204. paint 205. aroma 206. electricity 207. emerald 208. panel 209. bristle 210. fruit 211. lattice 212. violet 213. pukeko 214. willow 215. chandelier 216. elephant 217. window 218. poem 219. apple 220. saddle 221. septuagenarian 222. holiday 223. lasso 224. sheep 225. sediment 226. critic 227. cardboard 228. titivate 229. horseshoe 230. shovel 231. buttercup 232. silver 233. xray 234. fox 235. box 236. hero 237. jollity 238. green 239. glowworm 240. fingerprint 241. jacobean 242. karma 243. boat 244. lake 245. goat 246. gazelle 247. quetzal 248. didgeridoo 249. frock 250. furrow 251. splinter 252. rollerskate 253. pilgrim 254. ectoplasm 255. otter 256. cymbal 257. travel 258. lamington 259. groysman 260. hip 261. grandeur 262. verisimilitude 263. wave 264. risible 265. board 266. zealous 267. warble 268. headlight 269. spotlight 270. jazzercise 271. pyre 272. seedling 273. rifle 274. century 275. deep 276. surfboard 277. blues 278. event 279. spectrum 280. spoon 281. carrot 282. ghee 283. werewolf 284. bead 285. wire 286. opal 287. desiccate 288. heartbeat 289. trophy 290. feet 291. sand 292. ledge 293. hara-kiri 294. leech 295. kete 296. unicorn 297. visit 298. trade 299. awareness 300. onanism 301. urchin 302. energy 303. teabag 304. weed 305. tamarillo 306. print 307. costume 308. cataclysm 309. heaven 310. vaunting 311. fool 312. umpire 313. time 314. ukulele 315. nullify 316. location 317. portion 318. fantasy 319. kina 320. camel 321. blastoff 322. theatre 323. fuchsia 324. major 325. name 326. torch 327. mint 328. bazaar 329. spring 330. peninsula 331. planetarium 332. sphinx 333. runcible 334. rosebush 335. zebra 336. wolf 337. meritorious 338. circulation 339. mettlesome 340. ewok 341. symbol 342. quivering 343. pink 344. tulip 345. encyclopaedia 346. rhizome 347. chronicle 348. buffalo 349. mouthwatering 350. tough 351. mesmerising 352. bombastic 353. grace 354. oracle 355. salt 356. define 357. diamond 358. necessity 359. dichotomy 360. blossom 361. moxie 362. mystical 363. cell 364. merry-making 365. year 366. longing 367. shopping 368. cuff 369. reap 370. illustration 371. pathways 372. cerise 373. volcano 374. melting 375. maverick 376. more-ish 377. majestic 378. hill 379. catch 380. vase 381. cable 382. feline 383. saucer 384. herbaceous 385. pigeon 386. composition 387. maximal 388. magnetic 389. massive 390. mellow 391. lash 392. deer 393. patch 394. noise 395. whisk 396. pair 397. rabbit 398. gulf 399. vibe 400. confectionary 401. magical 402. mature 403. memorable 404. manna 405. snow 406. tsunami 407. yak 408. spinfex 409. dessert 410. leaves 411. dollar 412. schism 413. yacht 414. motivating 415. meaningful 416. mirthful 417. mercurial 418. stable 419. barge 420. hotcakes 421. thunderbolt 422. coconut 423. hegemony 424. reason 425. ocean 426. moving 427. muscular 428. musical 429. methodical 430. poi 431. nautilus 432. hypothesis 433. reply 434. vitamin 435. kitten 436. speed 437. tussock 438. piffle 439. munificent 440. mighty 441. marked 442. mythical 443. fern 444. flocked 445. stone 446. lollipop 447. top 448. porcupine 449. granite 450. evidence 451. bridesmaid 452. medalled 453. meliorative 454. matchmaker 455. cloud 456. bible 457. steel 458. gavotte 459. card 460. tree 461. wheel 462. cuisine 463. loop 464. radar 465. comet 466. manifold 467. manifest 468. meteoric 469. jacuzzi 470. orchid 471. coach 472. hairspray 473. adhesive 474. classroom 475. dominion 476. hammock 477. philanthropist 478. marvellous 479. monumental 480. stealth 481. east 482. petticoat 483. hunt 484. nurse 485. doyenne 486. feijoa 487. farthing 488. harbinger 489. opportunity 490. mellifluous 491. meticulous 492. cushion 493. wrestler 494. class 495. lamb 496. ballerina 497. tractor 498. wing 499. space 500. caravan 501. bubble 502. vanilla 503. masterful 504. miraculous 505. superstar 506. nest 507. donkey 508. fork 509. herd 510. guacamole 511. ecology 512. stripe 513. ghost 514. firstborn 515. perfume 516. multifaceted 517. coat 518. soldier 519. beard 520. cupid 521. swallow 522. lentil 523. length 524. below 525. banana 526. nuzzle 527. porpoise 528. leisure 529. temple 530. momentous 531. libertarian 532. transition 533. graveyard 534. parlour 535. osmosis 536. pugilist 537. prince 538. exoticism 539. eye 540. glossy 541. picnic 542. dune 543. maestro 544. airplane 545. run 546. party 547. farm 548. joker 549. torpedo 550. control 551. aspidistra 552. exercycle 553. storyteller 554. giant 555. container 556. mojo 557. globe 558. slide 559. hand 560. literature 561. clairvoyant 562. question 563. tarnish 564. film 565. psychology 566. exonerate 567. tapir 568. xylem 569. frypan 570. icicle 571. squaw 572. rattlesnake 573. infinity 574. count 575. nib 576. extraction 577. eiderdown 578. asteroid 579. holly 580. office 581. avatar 582. saint 583. tour 584. suit 585. language 586. starfish 587. pig 588. kimono 589. hermit 590. look 591. happy 592. aquamarine 593. barter 594. pipe 595. illuminate 596. alack 597. hang 598. sunflower 599. flow 600. whimsical 601. uvula 602. park 603. visible 604. neighbour 605. kalamazoo 606. yourself 607. yule 608. tangerine 609. venom 610. paisley 611. shift 612. stood 613. drill 614. league 615. squash 616. couch 617. whirligig 618. cold 619. yucky 620. sofa 621. treasure 622. herring 623. quill 624. toddy 625. fare 626. scent 627. pie 628. pumpkin 629. yonder 630. pretty 631. atom 632. feign 633. pony 634. fugue 635. nymphomaniac 636. entrance 637. lupine 638. grass 639. ambience 640. spade 641. folder 642. skateboard 643. irradiate 644. travail 645. stream 646. crystal 647. orca 648. thimble 649. reception 650. stapler 651. rodent 652. fallow 653. television 654. candelabra 655. helicopter 656. dire 657. shelter 658. particles 659. ticket 660. violin 661. silence 662. crayon 663. dove 664. bicultural 665. onomatopoeia 666. omen 667. yearling 668. beekeeper 669. intrepid 670. pond 671. perish 672. postcard 673. feature 674. quagga 675. vision 676. dionysian 677. yesterday 678. laptop 679. tried 680. stygian 681. closet 682. balloon 683. term 684. now 685. juice 686. forest 687. nettle 688. bridge 689. experience 690. luck 691. wonky 692. sardine 693. hirsute 694. silkworm 695. picture 696. cup 697. truth 698. sticker 699. kaleidoscope 700. balance 701. julienne 702. zither 703. varnish 704. languid 705. fledgling 706. spanner 707. prism 708. catamaran 709. castle 710. dresser 711. phantasm 712. zephyr 713. jungle 714. rear 715. oleander 716. effulgent 717. llama 718. hone 719. fig 720. phial 721. number 722. toggle 723. nincompoop 724. ostentatious 725. turbine 726. gizzard 727. soccer 728. hummingbird 729. jandal 730. trousers 731. red 732. pinecone 733. raise 734. tablecloth 735. baby 736. pomegranate 737. ranunculus 738. frankincense 739. griefstricken 740. frequency 741. cycle 742. oyster 743. cattle 744. bonsai 745. spice 746. hemo 747. heretic 748. caldera 749. decoration 750. ring 751. plaid 752. captive 753. rope 754. ponytail 755. solo 756. alarm 757. trolley 758. excuse 759. existential 760. cry 761. albino 762. dine 763. gate 764. river 765. tune 766. pulse 767. lady 768. float 769. condition 770. quest 771. satellite 772. winnebago 773. ear 774. firecracker 775. bedroom 776. compulsion 777. laugh 778. hammer 779. axolotl 780. ulna 781. season 782. trivia 783. understand 784. wizard 785. side 786. geek 787. centipede 788. fence 789. bush 790. people 791. isotonic 792. yammering 793. ninja 794. diplodocus 795. rare 796. bell 797. keyboard 798. vanish 799. stupor 800. sock 801. almond 802. windbreaker 803. zone 804. abacus 805. goggles 806. celery 807. shoe 808. hydrant 809. hermaphrodite 810. gizmo 811. open 812. kismet 813. emancipate 814. possibility 815. bassoon 816. soot 817. clip 818. iceskater 819. tuxedo 820. octagon 821. wisdom 822. cornucopia 823. velocity 824. parapsychosis 825. obsequious 826. template 827. sachem 828. watch 829. xylophone 830. centaur 831. rate 832. uakari 833. rainbow 834. instep 835. allow 836. cucumber 837. crooked 838. assasin 839. sparrow 840. photograph 841. invalidate 842. portal 843. tumbleweed 844. crop 845. clout 846. swan 847. structure 848. pork 849. glass 850. rotate 851. suitcase 852. optimization 853. bulb 854. gasoline 855. nimble 856. plant 857. hourglass 858. jinni 859. filigree 860. puddle 861. anchor 862. sea 863. hellicose 864. rap 865. whisper 866. tempura 867. tomato 868. snowflake 869. trumpet 870. idea 871. frame 872. fugitive 873. sunglasses 874. palette 875. blanket 876. safe 877. nugatory 878. priest 879. bread 880. gobsmacked 881. lorry 882. trunk 883. exclamation 884. bach 885. coffin 886. dissemination 887. curtain 888. jeroboam 889. rhinoceros 890. host 891. tuvaevae 892. category 893. rudder 894. vigour 895. damnation 896. golfball 897. well 898. nepotism 899. hamper 900. etching 901. will 902. earrings 903. windchime 904. wonder 905. scallop 906. novel 907. hotel 908. flame 909. troglodyte 910. dogmatic 911. parallelogram 912. idol 913. play 914. tyre 915. quirk 916. bat 917. rodeo 918. smile 919. cow 920. ligature 921. peace 922. jostling 923. enmity 924. voluptuary 925. reflex 926. crocus 927. list 928. concept 929. shell 930. pantaloon 931. groupie 932. encounter 933. currency 934. scroll 935. xenophobia 936. Zimmerman 937. lexicon 938. days 939. limousine 940. frog 941. recondite 942. peach 943. race 944. rhododendron 945. pip 946. wreak 947. eternity 948. hairbrush 949. teatowel 950. hibiscus 951. uxorious 952. baguette 953. words 954. turntables 955. statue 956. ribbon 957. hooter 958. kingdom 959. bovine 960. gulp 961. chutzpa 962. atmosphere 963. wood 964. ride 965. jelly 966. future 967. calligraphy 968. droplet 969. checkers 970. gentleman 971. gooseberry 972. snog 973. watermelon 974. chopstick 975. carving 976. fluorescent 977. prime 978. contemplation 979. calculator 980. truffle 981. harp 982. pantomime 983. inkling 984. policeman 985. albeit 986. glove 987. bacillus 988. triumph 989. zilch 990. inquisition 991. lifesaver 992. gold 993. repeat 994. walnut 995. honeysuckle 996. opossum 997. vendetta 998. radio 999. purple 1000. maven

## NEW COLLECTORS ART

tuesday 24 june 2008 6.00pm

## LOCATION

3 Abbey Street, Newton Auckland

## VIEWING

friday	20 june	9am – 5pm
saturday	21 june	11am – 4pm
sunday	22 june	11am – 4pm
monday	23 june	9am – 5pm
tuesday	24 june	9am – 2pm

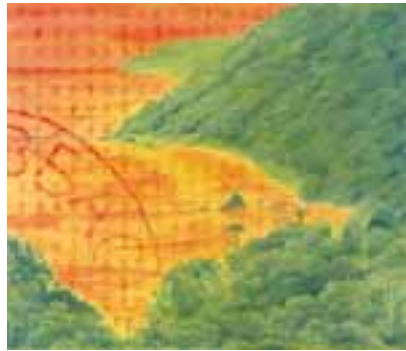


1

1 | James Robinson  
*She Wuz A Angry Man...*  
 mixed media and collage on paper  
 title inscribed and signed  
 705 x 495mm  
 \$1000 - \$2000



2



4

2 | Seraphine Pick  
*The Past Transformed*  
 etching, a/p imp 1/1  
 title inscribed, signed and dated '86  
 375 x 260mm  
 \$600 - \$900



3

3 | Seraphine Pick  
*A Dream of a Figure in Striped Tights*  
 etching, ap/imp 1/2  
 title inscribed, signed and dated '86  
 360 x 265mm  
 \$600 - \$900

4 | Roger Mortimer  
*Untitled*  
 acrylic on canvas  
 270 x 318mm  
 \$1000 - \$2000



5



6



7

5 | Jacqueline Fraser

| *Conspirators*

oilstick on brocade fabric

title inscribed, signed and dated 14.7.2002;

original Roslyn Oxley9 Gallery label affixed verso

320 x 320mm

\$1500 - \$2000

6 | Jacqueline Fraser

| *War Lords*

oilstick on brocade fabric

title inscribed, signed and dated 14.7.2002;

original Roslyn Oxley9 Gallery label affixed verso

320 x 320mm

\$1500 - \$2000

7 | Pat Hanly

| *Seeing the Beautiful*

screenprint, 8/10

title inscribed, signed and dated '88

950 x 700mm

\$5000 - \$7000



8

8 | John Reynolds

| *Nebuchadnezzar on Fire in a Coffin with Lovers*

acrylic and oilstick on paper

title inscribed, signed and dated 1987

490 x 637mm

\$2000 - \$3000



9



10



11



12

# THE PRICE WATERHOUSE COOPERS COLLECTION

9 | Carole Shephard

| *The Song Lines – Layers of Time*  
etching, 12/50  
title inscribed, signed and dated '90  
580 x 755mm

PROVENANCE: from the collection of PriceWaterhouseCoopers, Wellington

\$400 - \$700

10 | Rodney Fumpston

| *N. Z. Flora*  
lithograph, 34/35  
title's inscribed and signed  
580 x 775mm

PROVENANCE: from the collection of PriceWaterhouseCoopers, Wellington

\$400 - \$600

11 | Guy Ngan

| *Oriental Bay, Wellington*  
screenprinted poster print

title inscribed, signed and dated Oct 1988 on the plate  
395 x 603mm

PROVENANCE: from the collection of PriceWaterhouseCoopers, Wellington

\$50 - \$100

12 | Marilyn Webb

| *Evening Cloud, Ida Valley, March 6*  
watercolour

title inscribed, signed and dated Dunedin 1988 and inscribed  
(from being in the Maniototo suite)

900 x 653mm

PROVENANCE: from the collection of PriceWaterhouseCoopers, Wellington

\$1000 - \$2000





13



14



15

13 | Olivia Spencer Bower

*The Spinners*

ink on paper

signed

340 x 490mm

PROVENANCE: from the collection of  
Price Waterhouse Coopers, Wellington

\$1500 - \$2500

14 | John Bevan Ford

*He Pihi*

coloured ink on paper

artist's name and title inscribed on

Milford Galleries label affixed verso

568 x 765mm

PROVENANCE: from the collection of  
Price Waterhouse Coopers, Wellington

\$1000 - \$2000

15 | Pat Hanly

*Awake Aotearoa* from the *Fire Series*

screenprint, 18/32

signed and dated '83

560 x 767mm

PROVENANCE: from the collection of  
Price Waterhouse Coopers, Wellington

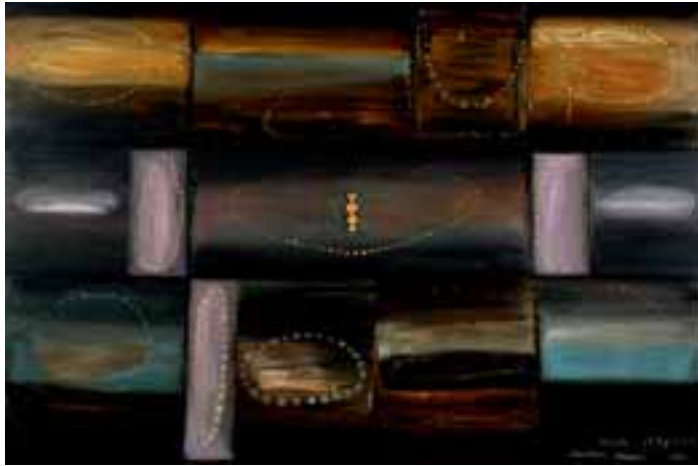
\$2500 - \$3500



16



17



18



19



20

16 | Nigel Brown

| *Waters of the Land*

woodcut, 1/10

title inscribed, signed and dated Auckland '86

715 x 640mm

PROVENANCE: from the collection of  
Price Waterhouse Coopers, Wellington

\$1400 - \$2000

17 | Michael Smither

| *Harmonic Patterns*

screenprint

signed with artist's initials M. D. S and inscribed 1/20/75 - 1/37

585 x 395mm

PROVENANCE: from the collection of  
Price Waterhouse Coopers, Wellington

\$800 - \$1200

18 | Peter Cleverley

| *With Respect*

oil and gold leaf on board

title inscribed, signed and dated 1993

1190 x 1790mm

PROVENANCE: from the collection of  
Price Waterhouse Coopers, Wellington

\$4000 - \$7000

19 | Michel Tuffery

| *Ole Pa Ole Pepe Oia*

lithograph, 14/32

title inscribed, signed and dated '84

645 x 490mm

PROVENANCE: from the PriceWaterhouseCoopers  
collection, Wellington

\$700 - \$1000

20 | Michel Tuffery

| *Pili Sapio*

lithograph, 12/15

title inscribed, signed and dated '88

660 x 510mm

PROVENANCE: from the PriceWaterhouseCoopers,  
collection, Wellington

\$800 - \$1200



21



22



23

21 | Agnes Wood

*Still Life with Freesias, Taupo*  
watercolour

signed

330 x 270mm

PROVENANCE: from the  
collection of Price Waterhouse  
Coopers, Wellington

\$300 - \$500

22 | Agnes Wood

*Still Life with Camellias, Taupo*  
watercolour

signed

360 x 300mm

PROVENANCE: from the  
collection of Price Waterhouse  
Coopers, Wellington

\$300 - \$500

23 | Agnes Wood

*The Old Lumberyard, Auckland*  
watercolour

signed

300 x 390mm

PROVENANCE: from the  
collection of Price Waterhouse  
Coopers, Wellington

\$300 - \$500



24



25



26



27



28



29

24 | Gavin Chilcott

| *Fresh Greens and Wire Pots*

mixed media on paper

title inscribed, signed and dated September 1992

570 x 760mm

\$900 - \$1500

25 | Dick Frizzell

| *Just Outside Taumarunui No. 2*

lithograph, 42/50

title inscribed, signed and dated 18/7/89 on the plate

505 x 705mm

\$1200 - \$1800

26 | Marilyn Webb

| *March 10 - Lake Mahinerangi*

linoleum engraving, ink and watercolour

title inscribed, signed and dated April '82

260 x 300mm

\$400 - \$700

27 | Heather Francis

| *Poppies in the Garden*

watercolour

signed

560 x 745mm

\$400 - \$800

28 | Bill Hammond

| *Bone Eagle A*

etching, 8/25

title inscribed, signed and dated 2007

100 x 150mm

\$800 - \$1200

29 | Nobby Clark

| *Ponsonby Terrace*

acrylic on canvasboard

signed and dated '91; title inscribed verso

550 x 700mm

\$200 - \$400





30

30 | Clark Esplin  
| *People in the Street*  
watercolour  
signed; title inscribed verso  
220 x 147mm  
\$500 - \$800



31

31 | Leo Bensemenn  
| *Portrait of Mary Bensemenn*  
etching, 18/30  
title inscribed  
377 x 285mm  
\$400 - \$600



32

32 | Haydn Rive  
| *Geometric Abstraction*  
acrylic on canvas  
signed and dated '95  
902 x 800mm  
\$250 - \$400



33

33 | Dulot  
| *Coromandel*  
oil on canvas  
signed; title inscribed verso  
910 x 910mm  
\$200 - \$300



34

34 | Stanley Palmer  
| *Whakatipu – Afternoon*  
bamboo engraving, 6/60  
title inscribed, signed, dated 1977  
290 x 480mm  
\$400 - \$600



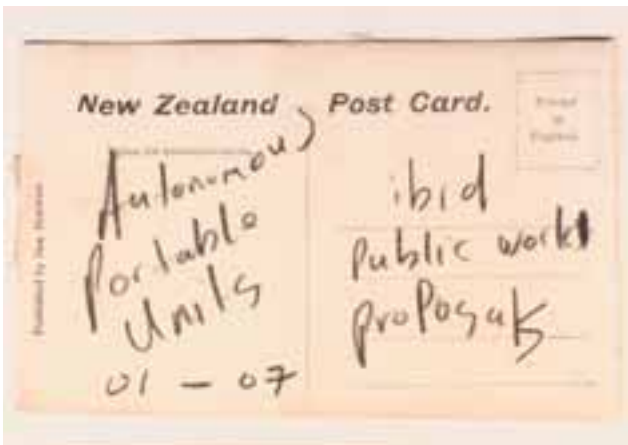
35

35 | Ena B. Jeans  
| *The Old Church*  
watercolour  
signed  
250 x 342mm  
\$700 - \$1000

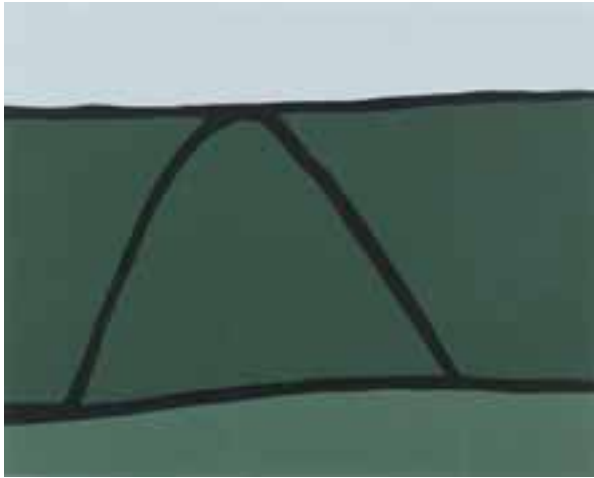




36 | Ralph Hotere  
| *Nude*  
ink and pastel on paper  
signed  
365 x 245mm  
\$7000 - \$10 000



37 | et al.  
| *ibid. public projects*  
screenprint on vinyl  
837 x 1195mm  
\$2000 - \$3000



38



39



40



41

38 | Colin McCahon  
*North Otago Landscape*  
 screenprint from the Barry Lett  
 Gallery multiples  
 430 x 540mm  
 \$2500 - \$4000

39 | Dick Frizzell  
*Sockeye Red*  
 screenprint, 1/50  
 signed and dated 24/2/78  
 540 x 610mm  
 \$1500 - \$2500

40 | Gary Currin  
*Coastal Drift*  
 acrylic on board  
 signed; signed and dated '00 verso  
 510 x 610mm  
 \$2000 - \$3000

41 | Dean Buchanan  
*West Coast Bush Scene*  
 oil on jute  
 signed and dated '86  
 1860 x 3010mm  
 \$2000 - \$3000



42

42 | Gavin Hurley

| *Tom*

oil on linen

signed with artist's initials *G.J.H* and dated '04

850 x 650mm

\$4500 - \$6500

43 | Noel Ivanoff

| *Picture Plane – Grapefruit Peel I*

acrylic on glass and panel, diptych

title inscribed, signed and dated 2003 verso

900 x 1300mm each

900 x 2600mm overall

\$5000 - \$8000



43



44



45

44 | Colin McCahon

*Letter to Emile Bernard*  
lithograph

title inscribed on the plate

325 x 206mm

PROVENANCE: Originally in the collection of Gordon Brown

\$5000 - \$7000

45 | Philippa Blair (nee Hutchinson)

*Space Poem*

acrylic on canvas, signed and dated '75

915 x 915mm

\$1000 - \$2000

46 | Tracey Tawhiao

*Untitled*

oil paint marker on canvas, 5 panels,

signed and dated 2006 verso

1220 x 1600mm approx. overall

\$3000 - \$5000



46



# Dennis Knight

PROVENANCE: The following six works were purchased directly from the artist by the current owner's grandfather who was the owner of a local printing company.



47 | Dennis Knight-Turner

*The Rev W. Yate's Wooden Press of Kerikeri, 1830 – First Catachism printed in Maori*

watercolour

title printed on original label; signed and dated '60 and inscribed 1

530 x 750mm

\$2500 - \$3500



48 | Dennis Knight-Turner

*A Reliance Flat Bed Cyclinder Press of the 1860s – Announcement of Otago Gold Strikes*

watercolour

title printed on original label; signed and dated '60 and inscribed 6

530 x 750mm

\$2500 - \$3500



49 | Dennis Knight-Turner

*'The Hawera Star', Printed on a Flat Bed Wharfedale, Using One Horse-Power, in 1880s*

watercolour

title printed on original label; signed and dated '60 and inscribed 5

530 x 750mm

\$2500 - \$3500

# Turner

50 | Dennis Knight-Turner

*First Newspaper 'The New Zealand Gazette' printed at Petone Beach, April 18th, 1840, on a Columbia Press*

watercolour

title printed on original label; signed and dated '60 and inscribed 3

530 x 750mm

\$2500 - \$3500



51 | Dennis Knight-Turner

*'The Auckland Times', 1841 - 1842, printed by Henry Falwasser on a Home Made Press Improvised from a Mangle*

watercolour

title printed on original label; signed and dated '60 and inscribed 4

530 x 750mm

\$2500 - \$3500



52 | Dennis Knight-Turner

*William Colenso's Stanhope Press at Paihia, 1835 - Printed Proclamation of Treaty of Waitangi*

watercolour

title printed on original label; signed and dated '60 and inscribed 2

530 x 750mm

\$2500 - \$3500

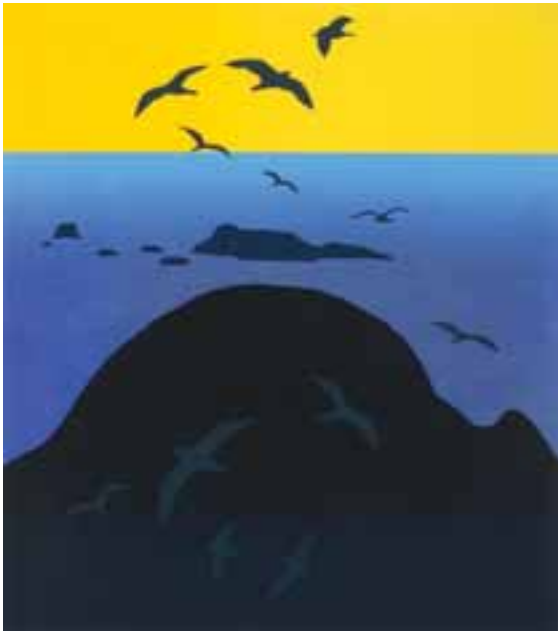




53



54



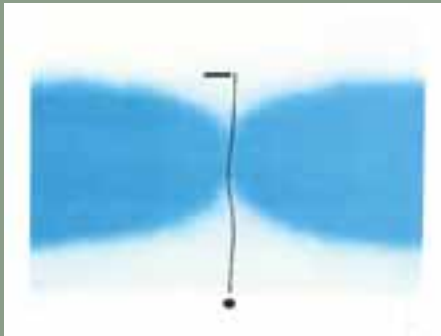
55

- 53 | Marilyn Webb  
 | *Protection Work – Dark tulip*  
 linoleum engraving, watercolour, graphite and collage, 1/20  
 title inscribed, signed and dated Dunedin 1985 and inscribed:  
*from the Pacific Countdown suite*  
 770 x 557mm  
 \$800 - \$1400

- 54 | Philip Clairmont  
 | *Head of Christ*  
 unique linocut, 1/1  
 title inscribed, signed and dated '82  
 365 x 302mm  
 \$1800 - \$2800

- 55 | Michael Smither  
 | *Untitled*  
 screenprint, 1/45  
 signed with the artist's initials M. D. S and dated '77  
 705 x 620mm  
 \$1000 - \$2000





56



57



58



59



60



61

56 | Victor Passmore  
| *Untitled*  
| screenprint, 32/70  
| signed with artist's initials *V. P* and dated '91  
| 455 x 635mm  
| \$500 - \$800

57 | Tony Fomison  
| *Racism*  
| lithograph, 2/12  
| title inscribed, signed and dated '80  
| 375 x 565mm  
| \$700 - \$1000

58 | Pat Hanly  
| *Hope, Vessel and Heart*  
| lithograph, 5/25  
| title inscribed, signed and dated '86  
| 330 x 415mm  
| \$600 - \$900

59 | Dick Frizzell  
| *Penzance/Cornwall*  
| lithograph, 9/36  
| title inscribed, signed and dated  
| 18/2/88 on the plate  
| 300 x 357mm  
| \$800 - \$1200

60 | Dick Frizzell  
| *Tower and Capstan*  
| lithograph, 4/24  
| title inscribed, signed and dated  
| 12/2/88 on the plate  
| 350 x 408mm  
| \$800 - \$1200

61 | Tony de Lautour  
| *Smoking Head*  
| etching, 2/24  
| title inscribed on the plate; signed with  
| artist's initials *T. D. L* and dated '04  
| 380 x 562mm  
| \$400 - \$700





62



65

62 | H.V. Millar  
| *Etude in Blue*  
oil on board  
title inscribed and signed verso  
185 x 183mm  
\$700 - \$1000

63 | H.V. Millar  
| *The Old Quarry*  
oil on board  
original Marshall Seifert Gallery  
label affixed verso  
246 x 270mm  
\$800 - \$1400



63



66

64 | Jan van der Ploeg  
| *Untitled*  
acrylic on paper  
245 x 297mm  
\$500 - \$800

65 | Lynne Hamilton  
| *St. Cuthbert's College*  
etching  
title inscribed, signed and  
dated 1942; title inscribed  
and signed verso  
120 x 182mm  
\$250 - \$350



64



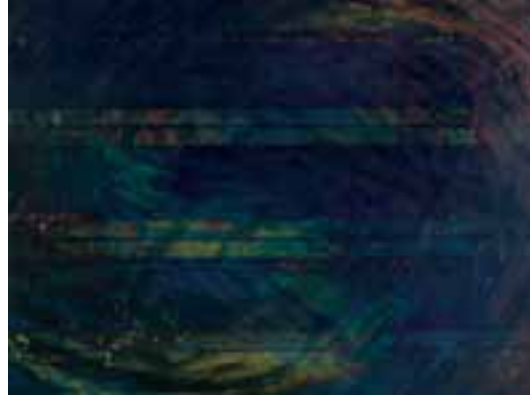
67

66 | Bill Hammond  
| *Bone Eagle C*  
etching, 8/25  
title's inscribed, signed and  
dated 2007  
100 x 150mm  
\$800 - \$1200

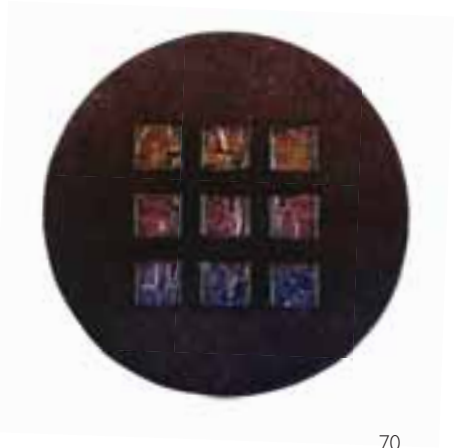
67 | Jenny Dolezel  
| *Personal Values*  
lithograph, 27/50  
title inscribed, signed and  
dated 1992  
530 x 720mm  
\$600 - \$900



68



69



70



71



72



73

68 | Clark Esplin  
 | *The Elderly Lady*  
 watercolour and acrylic on paper;  
 signed  
 233 x 160mm  
 \$250 - \$400

69 | Geoff Tune  
 | *Time Passes...*  
 acrylic on board  
 450 x 590mm  
 \$1 000 - \$2 000

70 | Patterson Parkin  
 | *Abstract Tondo*  
 oil on shaped board  
 diameter, 297mm  
 \$200 - \$300

71 | Leo Bensemann  
 | *Boy*  
 engraving, 18/30  
 title inscribed  
 230 x 177mm  
 \$500 - \$800

72 | James Ross  
 | *Night – Small Painting No. 10*  
 title inscribed on label affixed verso; signed and dated N.Y.C  
 1982 – 83  
 oil on shaped board  
 303 x 220mm  
 \$300 - \$500

73 | Ron Stenberg  
 | *Untitled – Portrait of a Man's Face*  
 pastel on paper  
 signed  
 352 x 280mm  
 \$300 - \$500



74



75



76



77

74 | Dick Frizzell

| *Tuna*

screenprint on found Tuna can, produced to mark the occasion of the artist's retrospective,

*Portrait of a Serious Artiste*

100 x 100 x 70mm

\$50 - \$150

75 | Terry Stringer

| *Untitled*

acrylic on tin  
signed and dated '81

210 x 197 x 40mm

\$600 - \$900

76 | Don Driver

| *Aluminium Warrior*

acrylic on aluminium  
title inscribed, signed and dated 1963/97

990 x 450 x 135mm

\$2500 - \$4000\*

77 | Philip Clairmont

| *Chair*

mixed media on found oak dining chair  
dated 1976

1120 x 590 x 480mm

\$1500 - \$3000



80



79



78

78 | Jeff Thomson  
| *New Zealand*  
corrugated iron, three parts  
1350 x 800mm (variable)  
\$5000 - \$7000

79 | Jeff Thomson  
| *Rooster*  
corrugated iron  
500 x 450 x 220mm (variable)  
\$1500 - \$2000

80 | Tony de Lautour  
| *Black Dot*  
oil and collage on canvas  
title inscribed, signed and dated 1992 verso  
205 x 135mm  
\$700 - \$1000



PROVENANCE: The following thirteen images were purchased by the current owner in Vancouver and were previously housed in the New Zealand High Commission in London



81



82



83



84



85



87



86



88

81 | NZ Tourist and Publicity

*Fishing for Salmon in the South Island*  
silver gelatin print, circa 1920  
inscribed verso *New Zealand Fishing –  
South Island, Salmon*  
137 x 185mm  
\$200 - \$300

82 | NZ Tourist and Publicity

*In the Hot Pools*  
silver gelatin print, circa 1920  
inscribed verso *Maori Women washing in Hot Pools*  
137 x 185mm  
\$250 - \$350

83 | NZ Tourist and Publicity

*In the Wool Shed*  
silver gelatin print, circa 1920  
inscribed verso *sorting wool according  
to quality into separate bins*  
137 x 185mm  
\$150 - \$250

84 | NZ Tourist and Publicity

*Dipping the Sheep*  
albumen print  
variously inscribed verso  
180 x 140mm  
\$150 - \$250

85 | NZ Tourist and Publicity

*Portrait of a Maori Elder*  
albumen print, circa 1915  
inscribed verso *an Old Maori Showing Tattoos*  
195 x 140mm  
\$400 - \$600

86 | NZ Tourist and Publicity

*Picking Apples*  
albumen print  
title inscribed verso  
140 x 200mm  
\$150 - \$250

87 | NZ Tourist and Publicity

*A Maori Woman*  
silver gelatin print, circa 1920  
title inscribed verso  
203 x 152mm  
\$300 - \$500

88 | NZ Tourist and Publicity

*Wool Wagons Crossing the Waiaapu River*  
silver gelatin print, 1927  
title inscribed verso  
93 x 140mm  
\$150 - \$250

89 | NZ Tourist and Publicity

*Maori Food Store*  
albumen print, circa 1915  
title inscribed verso  
136 x 200mm  
\$250 - \$350



89



91



92



93



90



94



95

90 | NZ Tourist and Publicity

*Tree Felling, North Island*  
silver gelatin print, circa 1920

inscribed verso *The native trees of New Zealand are mostly of slow growth but eventually attain to great size. There are many varieties of Pines, Beeches producing valuable timber*

182 x 136mm

\$160 - \$250

91 | NZ Tourist and Publicity

*Gathering Grapes, Vineyard Auckland*  
albumen print, circa 1915

title inscribed verso  
137 x 185mm

\$150 - \$200

92 | NZ Tourist and Publicity

*The Female Bee Farmers*  
albumen print, circa 1920  
title inscribed verso and inscribed:  
*NZ honey is of the most delicious flavor and when once tasted is*

*eagerly sought-after*

125 x 185mm

\$150 - \$200

93 | NZ Tourist and Publicity

*Chief Rangitira*  
silver gelatin print, circa 1920

title inscribed and inscribed *Wearing a Kiwi feather mat and carrying a 'Taiaha' a weapon indicative of rank*

175 x 131mm

\$400 - \$600

94 | Artist Unknown

*Group Architecture House*  
vintage gelatin silver print

253 x 345mm

\$200 - \$300

95 | Artist Unknown

*Group Architecture House*  
vintage gelatin silver print

253 x 345mm

\$200 - \$300



96 | Fiona Pardington  
| *Sally and Donna*  
gelatin silver print  
title inscribed, signed and dated 1999 verso  
290 x 375mm  
\$1200 - \$2000



97 | Fiona Pardington  
| *Untitled*  
gelatin silver print  
signed verso  
173 x 230mm  
\$800 - \$1200



98 | Andy Morley-Hall  
| *Old Bond Street, London*  
gelatin silver print  
artist's name, title and date (2001) printed verso  
143 x 215mm  
\$400 - \$600

99 | Ronnie van Hout

| *Finding Head*

colour photograph, 1/20

title inscribed, signed and dated 2002 verso

370 x 500mm

\$1200 - \$2000



100 | Laurence Aberhart

| *Moutere Hills*

gelatin silver print

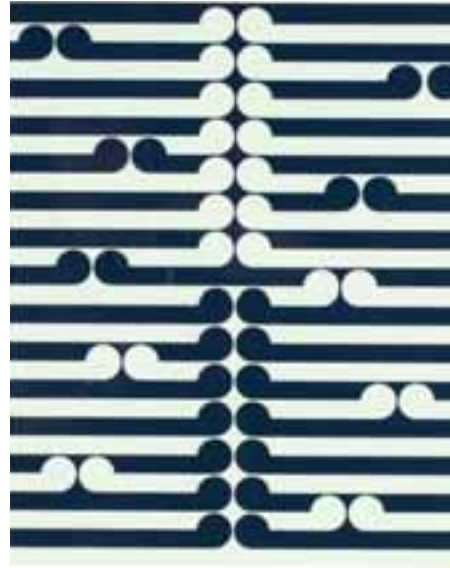
110 x 153mm

\$1500 - \$2500





101 | Gordon Walters  
| *Arahura*  
screenprint, 33/125  
title inscribed, signed and dated 1982  
550 x 432mm  
\$5500 - \$7500



102 | Ian Scott  
| *Lattice No. 129*  
title inscribed, signed and dated '86 verso  
acrylic on canvas  
915 x 915mm  
PROVENANCE: Private collection, Wellington  
\$4000 - \$6000



103 | Rita Angus  
| *Still Life*  
acrylic on canvasboard  
inscribed verso *Christmas Greetings and Best Wishes, Rita (1955)*  
107 x 135mm  
\$2500 - \$4000





104



105



106



107

104 | Pat Hanly  
 | *Golden Age*  
 screenprint, 35/70  
 title inscribed, signed and dated '80  
 540 x 610mm  
 \$2500 - \$4000

105 | Olivia Spencer Bower  
 | *Pohutukawas in Full Bloom*  
 watercolour  
 signed and dated 1979; title inscribed  
 on label affixed verso (partially legible)  
 410 x 560mm  
 \$1400 - \$2200

106 | Stanley Palmer  
 | *Afternoon - Mangawhau*  
 monotype, 3/5  
 title inscribed, signed and dated 1987  
 620 x 915mm  
 \$1200 - \$2000

107 | Jenny Dolezel  
 | *The Sun Stolen*  
 boxed set of six mezzotints with original  
 cover sheet, 111/30  
 title's inscribed, signed  
 and dated 1992 on each print  
 380 x 520mm each  
 \$2000 - \$3000



108



112

108 | Gretchen Albrecht

| *Sundial*  
screenprint, 38/125  
title inscribed, signed and dated March '80  
820 x 610mm  
\$1000 - \$2000

111 | No Lot



109

109 | Anne Hill

| *Asia/Pacific Passage*  
mixed media  
signed and dated '89  
1780 x 1120mm  
\$500 - \$800

112 | Norman Wooding

| *The Country Store*  
watercolour  
signed; title inscribed and signed verso  
and inscribed painted 1950s verso  
390 x 470mm  
\$500 - \$800



110

110 | Karel Burrows

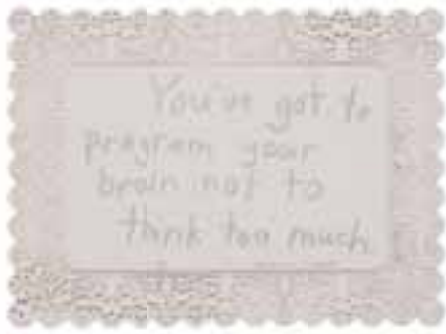
| *Chair V*  
etching, 19/60  
title inscribed and signed  
260 x 158mm  
\$100 - \$200



113

113 | Patricia France

| *Visiting at Kurow*  
gouache  
signed with artist's initials P.F.  
and dated '77; title inscribed verso  
305 x 392mm  
\$1500 - \$2000



114

114 | John Reynolds

*You've got to program your brain not to think too much*  
oil paint marker on found Chinese placemat  
title inscribed, signed and inscribed 1  
295 x 400mm  
\$300 - \$500



115

115 | Ronnie van Hout

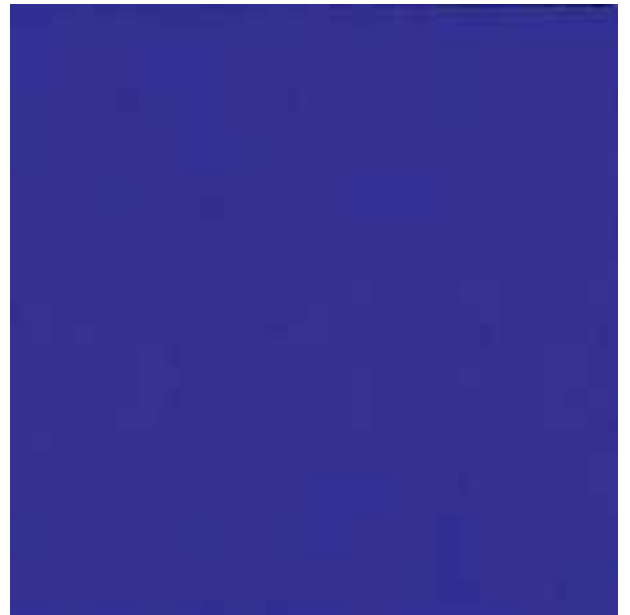
*Drip*  
embroidered thread on cotton  
title inscribed, signed and dated 1998 verso  
300 x 300mm  
\$600 - \$900



116

116 | Robert Ellis

*Untitled*  
oil on board  
signed and dated '62  
507 x 830mm  
\$1200 - \$2000



117

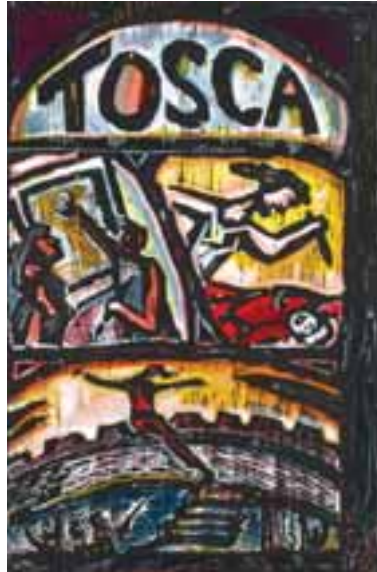
117 | Neil Frazer

*Blue Dreaming*  
oil on canvas  
title inscribed, signed and dated '94  
1975 x 1975mm  
PROVENANCE: from the collection of Colenso BBDO, Auckland  
\$6000 - \$9000

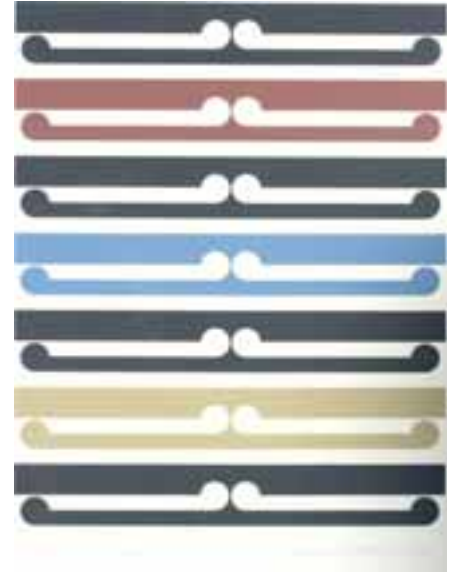




118



119



120



121

118 | Peter Siddell

| *Window*

screenprint, 85/150

title inscribed, signed and dated 1982

535 x 415mm

\$600 - \$800

119 | Nigel Brown

| *Tosca*

woodcut, 1/50

title inscribed, signed and dated 1994

780 x 515mm

\$800 - \$1400

120 | Gordon Walters

| *Kura*

screenprint, 125/150

title inscribed, signed and dated 1982

750 x 565mm

\$7000 - \$9000

121 | Tracey Tawhiao

| *Wairuaatua*

oil paint marker on canvas, triptych

title inscribed and signed; signed

and dated 2005 verso

305 x 915mm

\$1250 - \$1750



122 | Mervyn Williams  
| *Bright Gold (Study 1)*; acrylic on canvas, title inscribed, signed and dated 1992 verso, 795 x 652mm  
\$5000 - \$7000



123 | Freda Simmonds  
| *Te Reinga and the Sea*; oil on board, signed and dated 1962, 525 x 1210mm  
\$2800 - \$4000



124 | Hamish Keith *Painting 1958*; oil on board, artist's name, date and title printed on original label affixed verso, 745 × 600mm  
\$1800 - \$2800



125 | Richard Killeen *Untitled – Portrait of a Man in Red Sweater*  
acrylic on paper; signed and dated 2/2/69 and inscribed 1754, 355 × 470mm  
\$5000 - \$7000



126 | Ralph Hotere *Untitled – Abstract*; oil on canvas;  
signed and dated 1967 – 68 verso, 490 × 740mm.  
\$6000 - \$9000



127



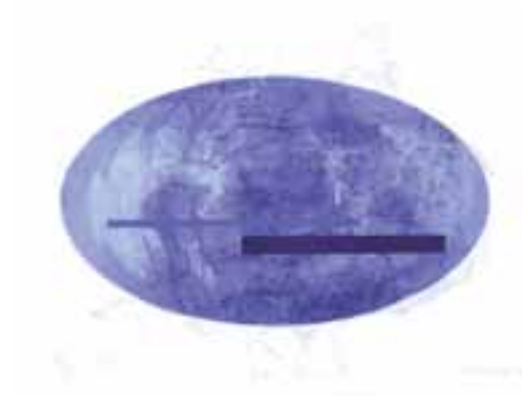
129

127 | John Reynolds  
 | *Other Men's Eyes*  
 | mixed media on board  
 | title inscribed; signed and dated 1989 verso  
 | 275 x 275mm  
 | \$1500 - \$2000

129 | John Reynolds  
 | *Prometheus Unbound*  
 | lithograph, 27/50  
 | title inscribed, signed and dated 1992  
 | 720 x 530mm  
 | \$1000 - \$1500



128



130

128 | Peter Siddell  
 | *Coast*  
 | pastel on paper  
 | signed and dated 2002  
 | title printed on artist's  
 | original label affixed verso  
 | 340 x 490mm  
 | \$2000 - \$3000

130 | Gretchen Albrecht  
 | *Tear*  
 | lithograph, 23/30  
 | title inscribed, signed and dated '98  
 | 685 x 795mm  
 | \$1600 - \$2400





131 | John Pule  
 | *Tokolonga faoa e loto he misi*  
 lithograph, 25/26  
 title inscribed, signed and dated '95  
 690 x 550mm  
 \$1800 - \$2600



132 | John Pule  
 | *Pulenoa*  
 lithograph, 16/24  
 title inscribed, signed and dated '95  
 685 x 550mm  
 \$1800 - \$2600

133 | Simon Edwards

| *Cloud Re-Collection I*

oil on paper, 2002  
signed with the artist's monogram; title  
inscribed and signed verso  
400 x 470mm  
\$2500 - \$3500



134 | Simon Edwards

| *Cloud Re-Collection II*

oil on paper, 2002  
signed with the artist's monogram; title  
inscribed and signed verso  
400 x 470mm  
\$2500 - \$3500



135 | Ralph Hotere

| *Round Midnight*

lithograph, 23/36  
title inscribed, signed and dated 2000  
555 x 740mm  
\$6000 - \$8000





136



137



136 | Luise Fong

| *Splash*

acrylic and gesso on canvas, diptych  
title inscribed, signed and dated 1998 verso  
and inscribed *Sonar Series Melbourne*  
710 x 455mm

\$3000 - \$5000

137 | Seraphine Pick

| *Untitled – Fragmentary Figure Study*

oil on canvas  
signed and dated 1990  
1065 x 760mm

\$5500 - \$7500

138 | Kirsty Gorman

| *Untitled*

acrylic on board, diptych  
signed and dated 2001 verso  
400 x 800mm overall

\$1300 - \$2000



139



140



141



142

139 | Shane Cotton  
| *Moerewa*  
| lithograph, 6/40  
| title inscribed, signed and dated 2004  
| 565 x 755mm  
| \$2000 - \$3000

140 | Bill Hammond  
| *Bone Eagle B*  
| etching, 8/25  
| title inscribed, signed and dated 2007  
| 100 x 150mm  
| \$800 - \$1200

141 | Jenny Dolezel  
| *Just Popped in for Lunch*  
| lithograph, a/p II  
| title inscribed, signed and dated 1987  
| 680 x 722mm  
| \$700 - \$1000

142 | Alexis Hunter  
| *Sleeping Figures*  
| lithograph, 5/26  
| signed and dated 1988  
| 570 x 765mm  
| \$500 - \$800





143



144



145

143 | Matthew Browne

| *Sequester IV*

oil on linen

title inscribed, signed and dated 2000 verso

1370 x 1370mm

\$2500 - \$4000

144 | Shane Cotton

| *Pararaiha*

lithograph, 6/40

title inscribed, signed and dated 2004

565 x 755mm

\$2000 - \$3000

145 | Philipa Blair

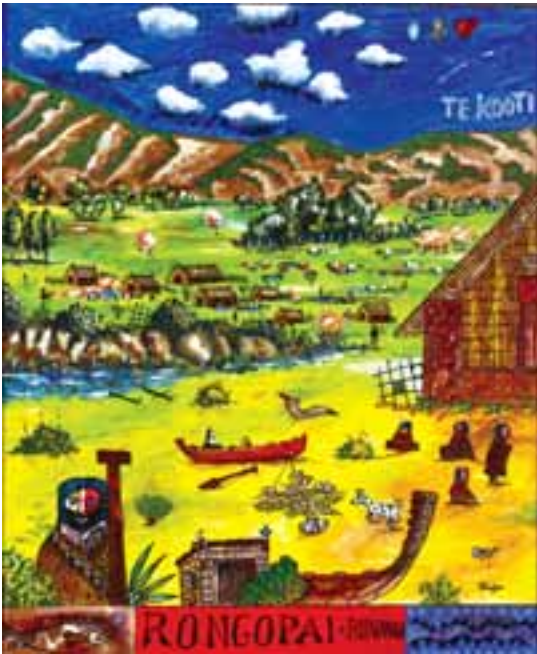
| *Red Tent*

acrylic on canvas with found paint tube

signed and dated '84

1800 x 1800mm

\$1800 - \$2800



146

146 | Alan Taylor  
 | *Rongopai - Runanga*  
 | acrylic on canvasboard  
 | title inscribed and signed  
 | 600 x 490mm  
 | \$1500 - \$2500



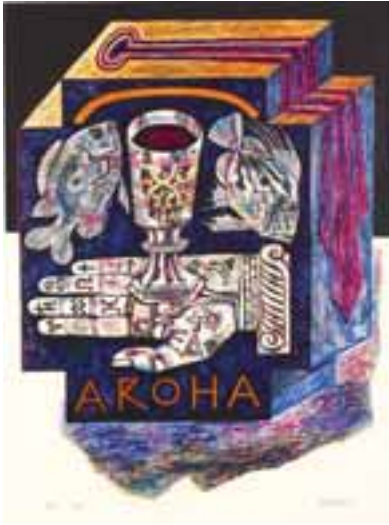
147

147 | Ray Thorburn  
 | *Asia/Pacific Passage*  
 | oil on board  
 | signed and dated '69  
 | 1365 x 1220mm  
 | \$800 - \$1400



148 | Jane Zusters  
 | *Boomerang*  
 | acrylic on unstretched canvas  
 | title inscribed, signed and dated 1987  
 | 1800 x 2470mm  
 | \$2500 - \$4000

148



149 | Robert Ellis  
 | *Aroha*  
 lithograph, 27/50  
 signed and dated '91  
 720 x 530mm  
 \$800 - \$1200



150 | Denys Watkins  
 | *Untitled*  
 screenprint, 47/60  
 signed and dated 04'  
 705 x 495mm  
 \$500 - \$800



151 | Mervyn Williams  
 | *Abstract with sky form*  
 screenprint, 2/12  
 signed and dated 65  
 750 x 620mm  
 \$600 - \$900



152 | Dick Frizzell *The Stump*; lithograph, triptych, 7/30, title inscribed, signed and dated 16/7/89, 570 x 2290mm overall. \$2000 - \$3000



153 | Gary Carsley  
 | *Seated Male Nude*  
 screenprint and collage on canvas  
 1550 x 1420mm  
 \$500 - \$800



154 | J. D Perrett  
 | *South Island Lake Scene*  
 oil on board  
 signed  
 280 x 415mm  
 \$450 - \$650



155 | J. D Perrett  
 | *South Island Mountain Scene*  
 oil on board  
 signed  
 307 x 235mm  
 \$300 - \$500



156 | Gretchen Albrecht  
 | *Response*  
 screenprint, 25/45  
 title inscribed, signed and dated '82  
 500 x 700mm  
 \$1200 - \$2000



157 | Gretchen Albrecht  
 | *Possess*  
 screenprint, 21/45  
 title inscribed, signed and dated '82  
 500 x 700mm  
 \$1200 - \$2000





158 | Philipa Blair  
 | *Mon Coeur*  
 title inscribed, signed and dated 1984  
 etching, 1/25  
 145 x 135mm  
 \$300 - \$400

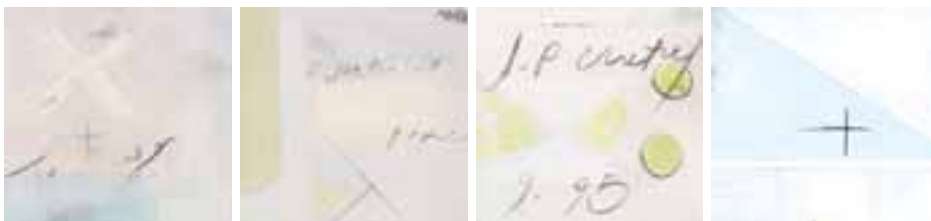
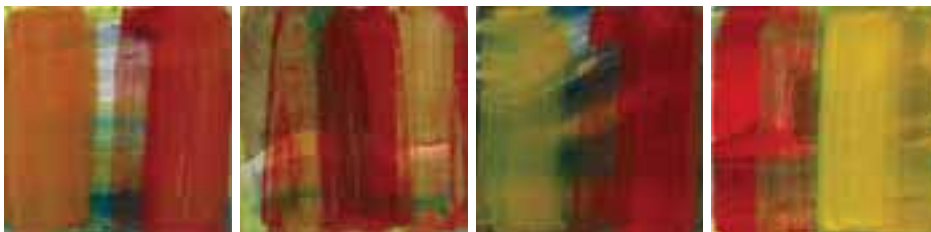
159 | Leo Bensemman  
 | *Ophelia*  
 etching, 18/30  
 title inscribed  
 77 x 51mm  
 \$250 - \$350

160 | Alan Taylor  
 | *Te Kooti*  
 acrylic on canvasboard  
 title inscribed, signed and inscribed  
*Te Iwi O Rongowhakaata*; title inscribed verso  
 180 x 157mm  
 \$400 - \$600

161 | Gary Tricker  
 | *The Optimist*  
 etching, 36/50  
 title inscribed, signed and dated '87  
 230 x 307mm  
 \$300 - \$500

162 | Karel Burrows  
 | *Front Porch*  
 etching, 14/80  
 title inscribed and signed  
 320 x 440mm  
 \$200 - \$300

163 | Norman Wooding  
 | *Autumn, Albert Park, Auckland*  
 watercolour  
 signed; title inscribed and signed verso  
 410 x 575mm  
 \$400 - \$600



164 | Matthew Browne

*Notes No. 4, 9, 23, 25*  
oil on panel, 4 parts  
title inscribed, signed and  
dated 1998 verso (each)  
200 x 200mm each  
\$500 - \$800

165 | Kate Northcott

*Untitled*  
oil on canvas, 4 parts  
signed and dated 2000 verso (each)  
340 x 340mm  
\$300 - \$500



166 | Marilyn Webb

*Snow – Lake Mahinerangi – September 30*  
mixed media on paper  
title inscribed, signed and dated 1985  
473 x 570mm  
\$700 - \$1200

167 | Jacquie Colley

*Sister*  
acrylic on canvas, diptych  
title inscribed and signed; dated 1998 verso  
255 x 507mm overall  
\$200 - \$400



168 | Dick Frizzell

| *Architiki*

screenprint, 57/80

title inscribed, signed and dated 2006

545 x 460mm

\$1500 - \$2000

169 | John Reynolds

| *Untitled*

acrylic, graphite, oilstick on card and wooden frames

two box framed works

225 x 225mm each

\$700 - \$1000

170 | Peter Robinson

| *Untitled: Study for Smoke 'Em Out*

ink on paper

signed and dated 2002

296 x 210mm

Provenance: Private collection, England

\$1200 - \$2000



168



170

169



171 | Hamish Keith  
 | *Chromatic Abstraction*  
 acrylic on canvas  
 signed and dated '90  
 755 x 1180mm  
 \$300 - \$500

172 | Hamish Keith  
 | *Banana*  
 screenprint, 1968  
 original National Art Gallery,  
 Wellington label affixed verso,  
 760 x 540mm  
 \$800 - \$1400



173 | Ross Ritchie  
 | *Bud*  
 screenprint  
 original National Art Gallery,  
 Wellington label affixed verso  
 760 x 550mm  
 \$300 - \$600



174 | Marc Chagall  
 | *Exhibition Poster for Galerie Maeght, 1962*  
 screenprint, 1231/2500  
 515 x 675mm  
 \$300 - \$500





175



176



177



178



179



180



181



182



183

175 | John L. Moore

*The Road to Dawson Falls*  
woodblock print  
signed with artist's initials JLM; title inscribed on the plate  
103 x 70mm  
\$100 - \$150

176 | John L. Moore

*Pohutukawa*  
colour woodblock print  
signed with artist's initials JLM; title inscribed on the plate  
122 x 87mm  
\$100 - \$150

177 | John L. Moore

*Panekiri, Waikaremoana*  
woodblock print  
signed with artist's initials JLM; title inscribed on the plate  
70 x 82mm  
\$50 - \$100

178 | John L. Moore

*Northern Rata*  
colour woodblock print  
signed with artist's initials JLM; title inscribed on the plate  
130 x 83mm  
\$100 - \$150

179 | John L. Moore

*White Heron*  
woodblock print  
signed with artist's initials JLM; title inscribed on the plate  
125 x 82mm  
\$100 - \$150

180 | John L. Moore

*Tui*  
colour woodblock print  
signed with artist's initials JLM; title inscribed on the plate  
88 x 122mm  
\$100 - \$150

181 | John L. Moore

*Ruapehu*  
woodblock print  
signed with artist's initials JLM; title inscribed on the plate  
70 x 122mm  
\$100 - \$150

182 | John L. Moore

*Cabbage Tree*  
woodblock print  
title inscribed and signed with artist's initials JLM  
155 x 57mm  
\$80 - \$120

183 | John L. Moore

*Pukeko*  
woodblock print  
signed with artist's initials JLM; title inscribed on the plate  
75 x 58mm  
\$80 - \$120

## DECORATIVE ARTS AND NEW ZEALAND SALE

wednesday 25th june at 5.30pm

### LOCATION

3 Abbey Street, Newton Auckland

### VIEWING

friday	20 june	9am – 5pm
saturday	21 june	11am – 4pm
sunday	22 june	11am – 4pm
monday	23 june	9am – 5pm
tuesday	24 june	9am – 5pm

# THE LYNN PIETERSON COLLECTION OF NEW ZEALAND TEAPOTS AND CERAMICS

Lynn Pieterston worked in two pottery galleries in Auckland, firstly Casa Pottery in Takapuna, then the well known Alicat Gallery in Ponsonby with Peter Sinclair. She started her ceramics collection 30 years ago, the enjoyment gained from going to exhibitions and meeting the artists saw her subsequently become involved in the New Zealand Potters Society. Her imminent move to a new, smaller home in the Bay of Plenty has precipitated offering her collection here.

200 | Warren Tippett  
| cylindrical stoneware teapot  
\$300 - \$350

208 | Julia Coleman  
| small crackle glazed chino teapot  
\$40 - \$80

216 | Margaret Sumich  
| simulated raku teapot  
\$50 - \$90

201 | Rick Rudd  
| raku teapot (small chip)  
\$100 - \$200

209 | Margaret Milne  
| small cobalt glazed porcelain teapot  
\$30 - \$50

217 | Jan Cockell  
| gold luster teapot and one other (faulted)  
\$30 - \$50

202 | Barry Hockenhill  
| underglaze blue decorated teapot  
\$50 - \$100

210 | Chris Weaver  
| white porcelain cube teapot  
\$225 - \$325

218 | Margaret Sumich  
| simulated verdigris teapot  
\$50 - \$90

203 | Beverley Luxton  
| cobalt blue glazed porcelain teapot  
\$40 - \$80

211 | Sally Vinson  
| green/blue brush decorated teapot  
\$50 - \$80

219 | Catherine Dawon  
| two resist spotted teapots  
\$50 - \$90

204 | Campbell Hegan  
| ox blood glazed spherical teapot  
\$50 - \$90

212 | Jan Firth  
| turquoise glazed teapot  
\$40 - \$80

220 | Gaylene Morley  
| soft purple ground teapot and green teapot  
\$30 - \$50

205 | Julia Coleman  
| celadon/chino glazed melon teapot  
\$40 - \$80

213 | Luo Xiao Ping  
| bamboo section teapot  
\$50 - \$100

221 | Janet Smith  
| salt glaze teapot  
\$40 - \$80

206 | Chris Weaver  
| black glazed porcelain teapot  
\$225 - \$325

214 | Jan Russell  
| two small art form teapots  
\$40 - \$80

222 | Peter Lange  
| Lion Beer can tankard  
\$60 - \$120

207 | Chester Nealie  
| small anagama teapot  
\$100 - \$150

215 | Tui Morse  
| mini porcelain teapot  
\$30 - \$50

223 | Royce McGlashin  
| teapot (faulted) and (B) Payton turquoise pot  
\$100 - \$150



200



201



206



210



216



223



213



209



222



221



224



233



234



224 | Sally Vinson  
| black porcelain teapot  
\$50 - \$90

233 | Chester Nealie  
| anagama pot with leaf impression c. 1999,  
ex. Kumeu Gallery  
\$100 - \$150

242 | Peter Shearer  
| planter pot and ovoid vase  
\$40 - \$60

225 | Gaeleen Morely  
| sculptural porcelain teapot  
\$30 - \$50

234 | Chester Nealie  
| anagama pot with shell impression c. 1999  
\$100 - \$150

243 | Sally Vinson  
| terracotta jug with slip glaze , three coffee cups,  
five saucers, jug and two mugs  
\$50 - \$80

226 | Potter unknown  
| melon shaped striped porcelain teapot  
\$30 - \$50

235 | John Parker  
| bronze scallop walled beaker vase  
\$200 - \$250

244 | Michael Lucas  
| six tea bowls and two others  
\$30 - \$50

227 | Potter unknown  
| chino glaze squat circular teapot  
\$30 - \$50

236 | John Parker  
| pink/grey agate glazed sphere  
\$80 - \$120

245 | Michael Lucas  
| shino glazed vase  
\$30 - \$50

228 | Margaret Gallagher  
| cane handled teapot  
\$30 - \$50

237 | John Sweden  
| wheel thrown bowl  
\$70 - \$110

246 | Renton Murray Hillside Pottery  
| planter and two others  
\$40 - \$80

229 | Margaret Sumich  
| cane handled teapot  
\$30 - \$50

238 | Hillside  
| bowl on four feet and shallow bowl  
\$50 - \$90

247 | Don Thornley  
| shino glazed bottle  
\$40 - \$80

230 | John Green  
| aluminium teapot 'Tilly Teapot'  
\$40 - \$80

239 | Renton Murray  
| cut sided teapot  
\$40 - \$80

248 | Three salt glaze vases,  
| stoneware mug, shino glaze dish and bottle  
\$20 - \$30

231 | Peter Collis  
| yellow tusk teapot (faults)  
\$80 - \$120

240 | John Papas  
| tile  
\$40 - \$80

232 | Don Thornley  
| flagon  
\$50 - \$90

241 | Cecilia Parkinson  
| five small vases and two Penny Evans bottle vases  
\$50 - \$100

## THE ROGER LEFT ESTATE COLLECTION OF

The following collection of veteran models is offered on behalf of the estate of the late Roger Left, well known member of the Auckland model powered and gliding aircraft fraternity



261



Roger Left

249 | 'Flying Mid' plane in red  
| with engine. Wingspan 1370mm  
\$75 - \$125

250 | Large plane in blue and yellow  
| with aluminium cowling. With servos,  
no motor. Wingspan 1620mm  
\$125 - \$250

251 | Large plane in blue and white  
| with red pinstripe detail with OS FS series engine  
Wingspan 1750mm  
\$250 - \$400

252 | 'Frisco Kid' raised wing plane  
| in blue, yellow and red, no motor. Wingspan 1430mm  
\$50 - \$100

253 | '1941 Albatross' large plane  
| in maroon and cream with black piping.  
With motor. Wingspan 2050mm  
\$250 - \$400



258

## MODEL AIRCRAFT



260

254 | '1939 Blitzkrieg' twin rudder plane  
| in blue and white with various club decals  
With Irvine motor. Wingspan 1490mm  
\$150 - \$300

255 | '#13' plane in blue and red  
| with electric motor. Wingspan 1325mm  
\$75 - \$125

256 | Plane in blue with orange detailing  
| With motor and wooden propeller.  
Wingspan 1630mm  
\$150 - \$250

257 | 7 mixed paper and balsa planes  
| (small) Various conditions  
\$50 - \$100

258 | Model Kayak  
| along with a motor boat hull  
\$50 - \$100



272

259 | Glider with NZSS decal, with wing in three sections. Wingspan 3800mm  
\$150 - \$250

260 | Large plane in white and red with large perspex cockpit, with motor  
Wingspan 1680mm  
\$250 - \$400

265 | '1928' large plane with upswept wing in red and white. with Max-H OS 60 engine with OS 704 exhaust Wingspan 2400mm  
\$300 - \$500

270 | Large incomplete float plane with some running gear  
\$50 - \$100

261 | 'Tomboy 1950' large plane in white and red with black piping with large motor pronounced exhaust Wingspan 2200mm  
\$300 - \$500

266 | 'Wasp' older style plane damaged  
Wingspan 960mm  
\$25 - \$50

271 | Raised wing plane in yellow and red with engine. Wingspan 1000mm  
\$75 - \$125

262 | Large single 'Moth' wing plane in red and cream without engine. Wingspan 2020mm  
\$100 - \$200

267 | Kyosho Concept 30 helicopter (plastic)  
Length 1150mm  
\$100 - \$200

272 | Open cockpit stunt plane in red and black with Saito FA 30 motor  
Wingspan 1600mm  
\$200 - \$400

263 | Plane parts: three incomplete fuselages, five miscellaneous wings and a set of floats  
\$75 - \$125

268 | 'Silent Bugler' plane in yellow and blue without motor. Wingspan 1070mm  
\$50 - \$100

273 | Raised wing plane in blue and yellow  
Wingspan 1080mm  
\$50 - \$100

264 | Large single wing plane without engine in orange and blue  
Wingspan 2400mm  
\$150 - \$300

269 | Misc. yellow fuselage in yellow  
\$25 - \$50

274 | A selection of approximately six (6) model plane engines and parts  
\$50 - \$100

# ANYONE CROSSING THIS LINE IS LIABLE TO BE SHOT.

- 275 | A warning banner  
| presumably associated with the 1951 Waterfront  
| dispute. Canvas painted with bright red lettering on a  
| white ground - *Anyone Crossing This Line Is Liable To  
| Be Shot* and verso *Disperse Or We Fire*.  
\$1000 - \$2000

- 276 | Auckland tram destination banner,  
| printed paper affixed to linen backing  
\$200 - \$400

- 277 | Scratch built model of HMS Endeavour  
| \$200 - \$300

- 278 | E Catherwood  
| Gallipoli [*from a position offshore*]  
| oil on board  
| signed  
\$5000 - \$10000

- 279 | John Bevan-Ford  
| Pou  
| H.2600mm  
\$4000 - \$6000

- 280 | Richard Anderson (Tainui, Kahungunu)  
| *Waka Tauihu (Prow)* and *Waka Taurapa (Stern Post)*  
| South Westland nephrite of mid green colour with  
| quartz star inclusions. L.390mm and L.450mm  
\$5000 - \$7500

- 281 | Carved bust by John Tohia of a Maori chief.  
| Of partially stained, partially natural greywacke.  
| H.280mm  
\$5000 - \$6000



279



278



280



281



- 282 | A sandblast etched glass door panel,  
 decorated with a whare and waka beneath arching  
 tree ferns, circa 1950s. Along with illuminated stand.  
 W.660, H.1680mm  
 \$600 - \$1000

- 283 | Pair of Expo 70 chairs  
 designed by Wanganui architect Michael Payne for  
 the International Design Exhibition in Osaka, Japan.  
 \$2000 - \$2500



283

- 284 | New Lynn salt glaze chimney pot.  
 H.700mm  
 \$200 - \$300

- 285 | Malcolm Watt  
 Freda Stark  
 bronze relief tondo with applied pigment  
 D. 75mm  
 \$300 - \$500

- 286 | Mottled kauri colonial scotch chest  
 with central hat drawer with burr totara fascia  
 flanked by small drawers above three full width  
 drawers raised on bun feet. H.1400 W.1180mm  
 \$2400 - \$3000



286

- 287 | Colonial kauri dressing table  
 with central mirror flanked by small mirrors. The lower  
 section with four small drawers with figured fascias  
 above two larger drawers to the base. W.1350mm  
 \$1500 - \$2000

- 288 | A good colonial flat front chest of drawers.  
 With mottled totara fascias with two small central  
 drawers flanked by larger drawers, above three of full  
 width, inset with brass escutcheons and with turned  
 wooden handles. Mottled kauri top sides and plinth base.  
 W.1100mm, H.1160mm  
 \$7000 - \$9000



288

# THE ELMSLIE SIDEBOARD



289 | An oak and kauri New Zealand Arts and Craft sideboard with carvings and probably the copper repousse work by Jessie Campbell (nee Elmslie).

Born in Wanganui 1869, Campbell was the daughter of Dr Rev John and Mrs Elmslie, congregational minister responsible for the building of St Pauls in Cashel Street, Christchurch. One of his parishioners was a woodcarver who taught the Elmslie daughters carving skills. Family correspondence details this sideboard as having been made before Campbell's marriage in 1891. The pediment carving resembles a Martin Bros grotesque, the superstructure is fitted with panels of dragons and dolphins above and flanking a conforming convex copper mirror. The base has conforming paneled doors and drawers with lion mask handles, the copper hinges conform to traditional Arts and Crafts style.

REF: At Home, A Century of New Zealand Design, Douglas Lloyd Jenkins, 2004. Page 17, an illustration of the sideboard photographed by Frank Denton in Wanganui in 1906 at Campbell's home. W.1850mm, H.2560mm

\$10 000 - \$20 000



- 290 | A brass celestial Century telescope by W Watson & Sons, 313 High Holborn, London. Circa 1916. Engraved with military markings probably associated with the scopes early owner:  
 PROVENANCE: Lieut-Col C Guy Powles DSO, to his son Sir Guy Richardson Powles KBE, ONZ (1905-1994) NZ diplomat and first Ombudsman.  
 See intro pages this catalogue for a piece on this telescope  
 \$3000 - 5000

- 291 | Rimu flat fronted chest of drawers, with two small above three of full width. W.1014mm, H.1100mm  
 \$600 - \$800

- 292 | Kauri colonial wardrobe with bevel edged mirrored door, flanked by mottled kauri panels and with mottled kauri drawer to the base. H.1940mm, W.1170mm  
 \$1500 - \$2000

- 293 | Kauri clerk's desk with spindle gallery and a bentwood chair  
 \$450 - \$600

- 294 | Solid mottled kauri dressing table, the superstructure with paneled doored cupboards, the mirror held on foliate carved supports, shelf to base, raised on turned legs  
 \$1000 - \$1500

- 295 | Colonial kauri dressing table with shield shaped mirror, anthemion cresting piece, flanked by small drawers. The base with four small drawers with puriri fascias above a platform shelf, turned legs terminating in porcelain castors. W.1200mm  
 \$1500 - \$2000

- 296 | Kauri colonial dressing table with mottled kauri frieze drawer, raised on turned legs. W.1000mm  
 \$750 - \$1000

297 | Folk art occasional table by Jane Brenkley.

Oval top carved and painted with a Maori family and dog in a landscape with a whare, raised on a carved tekoteko figure with inset paua shell eyes, from a stepped base decorated with a kowhaiwhai inspired incised pattern. Signed and dated 1944 to the top.

H.580mm, W.500mm

CF. A SIMILAR EXAMPLE BUT WITH AN OBLONG TOP SOLD AT A+O LOT 257 NOV 8 2007.

\$5000 – \$7000



298 | Early Jane Brenkley folk art diorama.

Depicting a Maori pah on a terraced hillside with warrior figures behind figural palisades and standing on an elevated platform hailing two figures standing in a waka at the base. With painted whares and figures in the background. Beech bentwood case with glazed sloping front. Signed and dated 1939.

H.430mm, W.320mm

\$4000 - \$8000



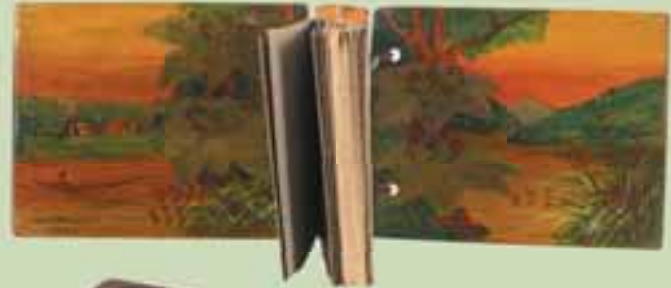


299 | Unique Jane Brenkley sketch and autograph book.

The covers of rimu carved in high relief with a tiki and lizard, bound to the the kauri spine carved with a tekoteko. The inside front and back cover pokerworked and painted with a landscape with two whare and a waka on a river. Signed and dated 1944.. The pages bound in sections of 1930s wallpaper and other heavy papers, variously sketched in inks and watercolours with caricatures, scenes and Maori and other studies, some bearing initials JB.

220 x 160mm

\$1500 - \$3000



299A | Jane Brenkley 'Friendship' box.

Oblong with hinged lid. Deeply carved to the top and walls with roses, highlighted with oil paints. The underside of the lid painted and pokerworked with three robins perched on a rose branch and inscribed: 'Best Wishes for the Future, Fond Memories of the Past, Remembrance in the Present, and Friendship to the Last. Jane Brenkley, 1955.'

The box interior wallpaper lined and decoupage with fruits and ferns and with a pokerwork inscription to the rim: 'Here Is Every Good Wish For Every Good Thing That A Wonderful Year Could Possibly Bring.' W.490mm, H.140mm

\$1500 - \$2000



- 300 | A folk art totemic clock tower by Captain Gilbert Small.  
 Carved with contorted Maori inspired figures supporting a timepiece raised on stages supported by caryatids flanking panels carved in low relief with Maori koruru masks. Incised verso Carved Hinau Wood , 'IPU', and dated 1938. Small lived at Tinoroto near Gisborne and was active between 1912 and 1950. H.630mm  
 \$3000 - \$5000



301

- 301 | A folk art frame carved by Captain Gilbert Small,  
 containing a newspaper clipping entitled *Valedictory at Waerenga-O-Kuri*. This references an evening of entertainment, speeches and toasts pertaining to Small leaving the district for an "extended period" The carving of typical nature to Small incorporates Maori inspired figures and motifs along with the date 1912. Incised verso Carved in Totara Wood by Capt. G Small 1942. A suspension tab is affixed verso, fashioned from an Edmonds Baking Powder tin lid. H.530mm, W.130mm  
 \$500 - \$800

- 302 | A folk art NZ Centennial cenotaph by Captain  
 Gilbert Small.  
 Carved in bas reliefs with Adam and Eve; Cook's arrival; the signing of the Treaty of Waitangi and the date 1940. H.440mm  
 \$500 - \$700



303

- 303 | A folk art casket by Captain Gilbert Small.  
 The sarcophagus shaped lid surmounted by a standing figure encircled by a serpent, the base with Maori inspired motifs. Incised undermesath Carved By G Small, 1941. H.260mm, W.170mm.  
 \$800 - \$1200



300

304 | Maori folk art wakahuia.

| Discoid form supported by two figures, the lid surmounted by an arching manaia headed figure and koruru head with lizard issuing from its mouth forming an incipient handle.. The box surfaces carved in low relief with a similar figure, a weku head and incised patterns. H.260mm, W.420mm

\$4500 - \$6000



304

305 | Folk art ebonised desk stand

| carved with two koruru mask heads in high relief with protruding tongues to support a pen, flanking a glass inkwell.

W.230mm

\$200 - \$300



305

306 | Folk art dark stained carved wood candlestick,

| with weku and koruru heads to the shaft and koru scrolls to the circular foot.

H.215mm

\$200 - \$300



306

307 | Maori folk art carved wood portrait bust

| of a man, with moko and wearing a cloak, raised on a base with tiki figures.

H.330mm

\$500 - \$600



307

308 | Maori folk art tiki figure,

| standing astride a smaller figure, labeled underneath T Waikite.

H.390mm

\$300 - \$400



308

309 | Kauri framed souvenir mantel clock

| carved by Wiremu Kutuheri, as a kiwi and chick surmounting a log, inset with a square faced timepiece.

H.330mm

\$1200 - \$1500



309

309A | Maori folk art carved wood koruru head,

| block carved, punched decoration, paua shell fixed eyes.

H.430mm including stand

\$200 - \$300



309A

310 | Kauri jewellery box carved by Rangi Stevens.  
 | The hinged lid with a weku head, the walls with  
 | repeating weku heads and carved patterns.  
 | W.260mm  
 | \$500 - \$800



310

311 | Bronze bust of a Maori,  
 | raised on a wooden plinth with silver plaque engraved:  
 | *Hori Ngakapa Te Whanaunga. This warrior chief was one  
 | of the leaders in the attack on the British escort at Martin's  
 | Farm, Great South Road, 17/7/1863. His brave wife Hera  
 | Puna accompanied him on the warpath.*  
 | \$350 - \$450



311

312 | Carved Maori folk art frame  
 | centred by a koruru head in high relief.  
 | 650 x 480mm  
 | \$150 - \$200

313 | Pair of painted wooden circular wall plaques:  
 | *Maori Chief N. Zealand and Maori Chieftainess NZ.*  
 | D.290mm  
 | \$200 - \$300



313

314 | Folk art carved study Pania of the Reef,  
 | label of the Disabled Servicemen's Society.  
 | H.250mm  
 | \$60 - \$120

315 | Kauri circular carved and painted wall plaque  
 | of an elderly lady.  
 | D.250mm  
 | \$40 - \$80

316 | Pair of bookends,  
 | with applied cast copper tiki figures.  
 | \$30 - \$50

319 | Group of three turned wood vases  
 | carved and painted with floral decorations  
 | \$50 - \$80

322 | Cast brass manaia form paperweight  
 | \$40 - \$80

317 | Souvenir photograph album  
 | \$10 - \$20

320 | Pair of sterling silver teaspoons with fern motifs  
 | to the bowls and finials cast as a figure of Pukaki  
 | \$50 - \$80

323 | Police baton with turned handle  
 | \$30 - \$50

318 | Group of five turned wood vases,  
 | decorated with landscapes and whare  
 | \$80 - \$120

321 | Totara nut bowl and a nut cracker  
 | carved as a ball peen hammer  
 | \$40 - \$80

324 | NZ timber walking stick  
 | \$80 - \$120



325 | Rewarewa walkingstick  
| \$100 - \$150

326 | Totara small deeds box,  
| the top inlaid with rewarewa, kauri, matai  
| and other timbers.  
| W.180mm  
| \$200 - \$250

327 | Pair of burr totara photograph frames  
| \$300 - \$400

328 | Chip carved kauri pipe rack  
| \$80 - \$120

329 | Kauri folk art frame  
| carved with flowers and thistles  
| \$125 - \$175

330 | Burr totara writing box,  
| with leather inset top  
| \$150 - \$250

331 | Small mottled kauri writing slope  
| with a drawer to the interior  
| \$150 - \$250

332 | Circular NZ timbers inlaid jewel box  
| together with a totara octagonal box  
| \$100 - \$200

333 | Inlaid NZ timbers octagonal jewel box  
| \$100 - \$200

334 | Mottled kauri and rewarewa oval tray  
| \$40 - \$80

335 | Colonial triptych folding firescreen,  
| painted with conglomerate views of Lamach's Castle,  
| gardens, nesting songbirds and a harbor in the  
| background. W.840mm, H.790mm  
| \$800 - \$1200



336 | Carved Maori folk art tiki figure lamp base,  
| with paua shell eyes and with Kowhaiwhai  
| patterned shade. H.660mm overall.  
| \$800 - \$1000



337 | A carved folk art koruru mask.  
| H.220mm  
| \$125 - \$175

338 | Carved folk art tiki figure.  
| H.360mm  
| \$150 - \$250

339 | Carved folk art tiki figure.  
| H.290mm  
| \$80 - \$120

340 | Kauri souvenir  
| carved by Wiremu Kutuheri,  
| as a kiwi surmounting a log.  
| H.210mm  
| \$400 - \$600

341 | Two small kauri souvenir kiwis  
| carved by Wiremu Kutuheri.  
| \$200 - \$300

342 | Carved Maori folk art  
| poutokomanawa figure.  
| H.440mm  
| \$200 - \$300

343 | Carved and stained Maori folk art  
| poutokomanawa figure.  
| H.800mm  
| \$200 - \$300

344 | Carved and stained kauri tiki figure  
| incised underneath Carved by  
| D P Jonas, 11/67. H.440mm  
| \$200 - \$300

349



345 | Carved oak folk art tiki figure. H.280mm  
\$80 - \$140

346 | Carved kauri folk art relief portrait of a woman,  
signed verso W Brokenshire, Auckland 1918. H.420mm  
\$150 - \$250

347 | Maori carved and painted folk art model  
of a waka taua.  
L.670mm  
\$250 - \$350mm

348 | Carved folk art taiaha head,  
with serrated edged paua shell eyes.  
H.220mm  
\$90 - \$120

349 | Unusual kauri gum head,  
carved naturally with Maori chevron motifs to the face in the  
manner of moko. Found by a gum collector in the coastal Dargaville  
area buried in a riverbank. H.150mm.  
\$500 - \$800

350 | A large natural piece of kauri gum.  
L.290mm  
\$180 - \$240

351 | A large natural piece of kauri gum.  
L.240mm  
\$180 - \$240

355



353



352 | A natural piece of kauri gum.  
L.180mm  
\$100 - \$150

353 | Small kauri gum cenotaph model,  
with a lion passant as a finial.  
H.170mm  
\$400 - \$500

354 | Small kauri gum trophy easel stand.  
H.160mm  
\$400 - \$500

355 | Carved folk art tiki.  
H.130mm  
\$30 - \$50

356 | Maori folk art 21st birthday wall plaque,  
carved Jemahl, Congratulations.  
250 x 700mm  
\$100 - \$150

357 | Maori folk art small wakahuia.  
L.200mm  
\$20 - \$40

358 | Carved Maori tekoteko staff,  
with a human figure surmounting two ancestral figures, circa 1970s.  
H.1070mm  
\$400 - \$600

354



- 359 | Small carved and stained wood wakahuia base.  
 | With projecting heads forming handles at either end,  
 | and carved in low relief with weku heads to the sides.  
 | L.235mm  
 | \$1000 - \$1200



359

- 360 | Totara walking stick with extensive Maori carving.  
 | Rotorua school. The top knob carved as a head with  
 | protruding tongue and inset paua shell eyes. Said to  
 | have been gifted to Bart Clark in 1940 by Guide Rangi.  
 | L.860mm.  
 | Y5992  
 | \$1000 - \$1500

- 361 | Carved wood section of a tokotoko  
 | (orator's stick). Carved extensively with figures.  
 | L.720mm  
 | \$400 - \$600

- 362 | Carved and twisted wood genealogical staff  
 | with weku head as the terminal knob and set  
 | with paul rondels along its length.  
 | L.960mm  
 | \$1000 - \$1250

- 363 | Patu aruhe (fern root pounder)  
 | L.280mm.  
 | \$200 - \$300

- 364 | Patu aruhe (fern root pounder)  
 | L.260mm.  
 | Y10736  
 | \$100 - \$200

- 365 | Folk art tewhatewha,  
 | the blade carved with a weku head and  
 | with extensive carving to the shaft.  
 | L.1180mm.  
 | \$200 - \$300

- 366 | Toki (hafted adze).  
 | Greywacke quadrangular blade with associated wood haft  
 | carved with notch and lineal patterns to the upper section.  
 | L.610mm (haft)  
 | Y08038  
 | \$1500 - \$2000

- 367 | Carved wood adze haft.  
 | L.700mm. Y07659  
 | \$100 - \$200



360



361



362



365



366



367



363



364

- 368 | Taiaha of small size, as if a child's.  
 | with uncarved head and protruding tongue.  
 L.1040mm.  
 Y9909  
 \$1000 - \$1400

- 369 | Maori carved folk art tobacco pipe  
 | attributed to Neke Kapua.  
 L.110mm  
 \$400 - \$600



- 370 | Bone flute,  
 | carved with weku face and an ornamental band to one  
 | end, pierced with three playing holes and a suspension  
 | hole to the top end.  
 L.130mm.  
 Y9040  
 \$1000 - \$1250



- 371 | Toki-kakau-poto (short handled tomahawk)  
 | with trade steel blade, fine wooden shaft with  
 | unfinished weku face carved to the butt.  
 L.375mm  
 \$200 - \$300



- 372 | 19th century taiaha  
 | with conventional whorl carved tongue issuing from a mouth  
 | with incipient teeth and head with paua shell inset ring eyes.  
 Long slender red-brown shaft. Said to be a gift to an English  
 timber merchant working in the late 19th century in North  
 Auckland, taken to the UK and repatriated in the 20th century.  
 L.1780mm  
 \$3000 - \$4000



368



372



372 (detail)





373 | Contact period hukahuka korowai (tagged cloak)

Fine flax foundation with scattered dyed ringlet thrums and red and white woolen tufts, the thrums gathered en masse at the collar and at the lower hem. Coloured looped wool decorates the borders.

Approximately 1500 x 1500mm. Presented float mounted, framed and glazed.

\$15 000 - \$20 000

374 | Pou (interior ancestral panel)

totara with red ochre staining, the figure stands with hands clasped to abdomen, incipient inscription carved across its chest.  
H.1500,W.660mm  
\$9000 - \$12000



374

375 | Pou,

ladzed kauri, 20th century, depicting a marihikau figure.  
H.1800mm,  
W.290mm  
\$200 - \$300



375

376 | Long ko (digging stick)

with elongated terminal knob, curved shaft.  
L.2200mm.  
Y10051  
\$300 - \$400



377

377 | Patu paraoa (whalebone club)

of large size, the spatula shape blade with the trace of a nerve channel, the reduced grip pierced with a countersunk hole, the butt with multiple ridging.  
L.450mm  
\$5000 - \$6000



378

378 | Flax and kiwi feather kete

with four tassels suspended from fine plied threads from the collar.  
Y10053  
\$600 - \$1000

381



382



383



384



385



386



387



379 | Two piupiu (flax skirts),  
sketched and dyed with various pattern,  
each with flax taniko woven waistbands  
Y9249 and Y9250  
\$1600 - \$2000

380 | Candlewick cloak  
with woolen thrums and feathers  
\$250 - \$500

381 | Pounamu mere (nephrite club)  
spatula shape with reduced grip pierced  
with countersunk hole, the butt with three  
ridges. L.300mm  
\$500 - \$800

382 | Pounamu hei tiki  
modelled with chin to left shoulder; ring eyes  
with red sealing wax remaining in one, semi-  
concealed suspension hole, hands to thighs,  
ribs and sex indicated by shallow grooving.  
H.74mm.  
\$4000 - \$6000

383 | Pounamu hei tiki  
modelled with chin to left shoulder; ring eyes,  
mouth with protruding bifurcated tongue,  
hourglass suspension hole through forehead,  
right hand to chest, left to thigh, sex indicated.  
H.90mm.  
\$2000 - \$3000

384 | Tangiwai hei tiki  
modelled with chin to left sholder; ring eyes  
with inset sealing wax, right hand to chest  
and left to thigh, hourglass suspension hole  
pierced forehead.  
H.85mm.  
\$1200 - \$1500

385 | Nephrite hei tiki  
modelled with chin to left shoulder; hands to  
thighs. Reputed provenance: Presented by  
Major Ropata to Colonel George Whitmore  
on his election to the Legislative Council and  
appointment as Colonial Secretary in 1877.  
H.120mm  
\$1200 - \$1800

386 | Tangiwai (bowenite) hei tiki  
carved with chin to left shoulder and hands to  
thighs, pierced suspension hole to forehead.  
H.80mm  
\$800 - \$1200

387 | Small tangiwai hei tiki.  
H.57mm  
\$200 - \$300



- 388 | Pounamu amulet  
| Irregular crescent shape with serrated flutings to the exterior edge and double knife bevel to the interior edge, pierced with a suspension hole. 66 x 48mm.  
Y11055.  
SOLD PREVIOUSLY A+O LOT 118 MAY 26 2007  
\$900 - \$1200



- 392 | Pounamu hei (nephrite pendant)  
| Irregular shape with large drill hole to the centre, H.60mm.  
Y09270  
\$200 - \$300



- 389 | Pounamu toki (nephrite adze blade)  
| L.110mm.  
Y10015  
\$175 - \$225



- 393 | Pounamu kuru pendant  
| L.75mm.  
\$150 - \$200



- 390 | Pounamu toki (nephrite adze blade)  
| L.110mm.  
Y10014  
\$100 - \$150



- 394 | Pounamu hei tiki  
| Inunga variety stone, modelled with head turned to right, hands clasped to abdomen.  
H.120mm.  
\$600 - \$800



- 391 | Pounamu kuru pendant  
| L.52mm.  
Y08970  
\$100 - \$150



- 395 | Unusual totara kuru (straight drop) pendant  
| Capped at either end with silver with simple engraved and wiggleworked decoration, encircled at the mid-point with a silver band affixed with a fern leaf.  
L.143mm  
\$200 - \$250



396 | Two Wanganui Mint Oraeki medals  
| issued to commemorate 6000 years of  
| occupation by Maori of the Auckland region.  
Struck in silver and copper  
\$100 - \$200

397 | Quadrangular adze blade  
| and two adze rough-outs.  
Y10773, 10772  
\$125 - \$175

398 | Greywacke quadrangular adze blade.  
| \$30 - \$40

399 | Greywacke sinker stone  
| with lashing scarf.  
Y11034  
\$40 - \$80

400 | Tino (paddle shaped weeding stick).  
| L.760mm.  
\$200 - \$300

401 | Weaving stick of dark timber  
| with cylindrical terminal knob.  
L.1010mm.  
Y6112  
\$200 - \$300

402 | Hoe (river canoe paddle)  
| mid-brown wood, elongated  
| terminal knob.  
L.1300mm.  
Y5569  
\$500 - \$600



402

403 | Mottled kauri cased brown kiwi  
| and kiwi egg  
\$2000 - \$2500



404 | Painted shell in the style of JP Backhouse,  
| with a whare and figures.  
\$50 - \$100



405 | Carved crib board by Tauri Bros, Wanganui  
| \$100 - \$200

406 | TEAL (Tasman Empire Airways Limited)  
| presentation cigarette box.  
Of rewarewa clad in paua submerged in Lucite, the  
interior with a sterling silver presentation plaque  
With Compliments From TEAL, New Zealand's  
International Airline. The lid with silver wings  
insignia  
\$800 - \$1000

407 | Crown Lynn Air New Zealand Teal 60 piece dinner service.  
| Complete with cups saucers, bowls etc  
\$4000 - \$5000

408 | Grimwades Maoriware Te Hongi pattern cup  
\$80 - \$120

409 | New Zealand manufacturer's sampler plate  
| with numerous club and organizations logos, insignia, crests etc.  
\$600 - \$750

410 | Royal Doulton Maori Art Kia ora plate  
| transfer decorated with a woman and child hand painted  
| Kowhaiwhai pattern border, yellow ground.  
D.260mm  
\$500 - \$800



411 | Two tin wall plates, painted with views of the  
| White Terraces and Mt Taranaki. D.230mm  
\$200 - \$300

412 | Harewood Axminster NZ woollen floor rug  
| patterned with a map of New Zealand.  
1380 x 680mm  
\$300 - \$500

413 | Harewood Axminster NZ floor rug  
| patterned with a view of Queenstown.  
1380 x 680mm  
\$300 - \$500

414 | Harewood Axminster NZ floor rug  
| patterned with a view of Mt Cook.  
1380 x 680mm  
\$300 - \$500

415 | Harewood Axminster NZ floor rug  
| patterned with a view of Lake Taupo.  
1380 x 680mm  
\$300 - \$500

416 | Hand hooked woolen floor rug  
| depicting two kiwis.  
1500 x 930mm  
\$400 - \$600

417 | A painted plaster model of a kiwi.  
| W.260mm  
\$180 - \$240

418 | NZ Centennial 1840 -1940 tray.  
| L.440mm  
\$150 - \$200

- 419 | Colour photograph  
| Feeding the Tohunga,  
420 x 560mm  
\$400 - \$600
- 420 | Black and white photograph of  
| Anthony Quayle as Orthello  
and an autographed programme together  
with a black and white photograph of Oscar  
Nscke, signed  
\$30 - \$40
- 421 | Five framed black and white  
| topographical photographs of NZ  
\$150 - \$250
- 422 | Ilene Rosa Stitchbury  
| *Outside the Pah*  
oil on canvas  
unsigned  
290 x 440mm  
\$600 - \$1000
- 423 | M G Monro  
| *Nelson Cathedral*  
watercolour  
signed beneath mount  
210 x 330mm  
\$80 - \$120
- 424 | Artist Unknown  
| *White Terraces*  
oil on board  
signed indistinctly  
290 x 450mm  
\$200 - \$300
- 425 | William Dittmer  
| *Mana*  
chromolithograph  
470 x 360mm  
\$200 - \$300
- 426 | Vida Bycroft  
| *Artist's Materials*  
lithographic poster  
570 x 520mm  
together with two theatre bills  
\$150 - \$250
- 427 | Mahogany case from the collection  
| of W H Partington, photographer;  
Wanganui, holding five quarter plate glass  
negatives by or attributed to Partington. Of  
various subjects including Maori woman and  
child, and nudes. Sold as part of the Partington  
Collection of photography, Webbs' Sept 2001.  
Offered together with a catalogue from that  
auction.  
\$400 - \$600
- 428 | Maj-Gen Horatio Gordon Robley  
| *Warrior – a tatued(sic) Maori man,*  
*rape on thighs*  
lithograph  
inscribed in ink and additionally in pencil  
"Moko" Proof the image is an illustration from  
Robley's book *Moko* a copy of which is offered  
with the image  
\$1000 - \$1500
- 429 | John Richard Morris  
| *Dunedin Woods*  
oil on canvas  
500 x 700mm  
\$100 - \$200
- 430 | Rix Carlton  
| *Untitled – Seascape*  
watercolour  
170 x 350mm  
\$100 - \$150
- 431 | Charles Heaphy  
| *Kauri Forest, Wairoa River, Kaipara*  
facsimilie Turnbull Library print  
\$150 - \$200
- 432 | David Cheer  
| *Kapiti, Four Evening Views of Levin Beach*  
mixed media  
\$50 - \$100
- 433 | Charles Heaphy  
| *Part of Lambton Harbour in Port Nicholson*  
chromolithograph  
second edition  
\$400 - \$600
- 434 | Neville Lodge Lodge Laughs cartoon  
| *Intersections*  
\$100 - \$200
- 435 | Neville Lodge Lodge Laughs cartoon  
| *Nuclear Testing*  
\$100 - \$200
- 436 | Neville Lodge Lodge Laughs cartoon  
| *Rainbow Warrior*  
\$100 - \$200
- 437 | Neville Lodge Lodge Laughs cartoon  
| *Introduction of GST*  
\$50 - \$100
- 438 | Neville Lodge Lodge Laughs cartoon  
| *Muldoon*  
\$50 - \$100
- 439 | R L Stevens  
| *Ngakurapana, Ngapuhi Chief*  
charcoal and pencil portrait sketch  
signed and dated '86  
\$200 - \$400

- 440 | R. L. Stevens  
| *Maku Koe Kia Ora Ai*  
| charcoal and pencil portrait sketch  
| signed and dated '85  
| \$200 - \$400
- 441 | R. L. Stevens  
| *Ngakurapana, Ngapuhi Chief*  
| charcoal and pencil portrait sketch  
| signed and dated '87  
| \$200 - \$400
- 442 | Tramp art picture frame  
| with applied star-burst decoration.  
| \$100 - \$200
- 443 | Pair of kauri tramp art picture frames  
| \$300 - \$500
- 444 | Guide to the Hot Lakes District,  
| Maggie Papakura, 1905. Booklet  
| \$40 - \$60
- 445 | Brett's Historical Series, Early  
| New Zealand,  
| edited by Thomson W Leys, Auckland 1890.  
| Red cloth and quarter morocco binding  
| with gilt tooling.  
| \$150 - \$250
- 446 | Seven assorted New Zealand  
| historical books  
| \$50 - \$100
- 447 | Te Tohunga, the ancient legends  
| and traditions of the Maoris,  
| Orally Collected and pictured by W Dittmer;  
| Routledge & Sons, London, 1907. Together  
| with the original dust cover from the book,  
| framed.  
| \$150 - \$200

- 448 | Three Black and white photographs  
| by Burton Bros of Hastings and Napier,  
| together with two others.  
| \$150 - \$250
- 449 | An album of loose photographs  
| of various New Zealand Official War  
| Correspondents from WWII provided by  
| the Director of Publicity, Prime Minister's  
| Department  
| \$400 - \$600
- 450 | Approximately 25 glass plate negatives  
| of New Zealand scenes  
| \$50 - \$100
- 451 | Framed print after the original by  
| Alfred Cutler – *a panoramic view of*  
| *Auckland from Princes Wharf*  
| \$200 - \$300
- 452 | Maori folk art coffee table,  
| carved with a manaia and  
| kowhaiwhai border  
| \$100 - \$200
- 453 | Kauri occasional table  
| with chip carved and pokerwork  
| oval top, dated Dec 1903  
| \$200 - \$300
- 454 | New Zealand timbers folk art table,  
| the octagonal top inlaid and painted with  
| a sailing ship, raised on octagonal totara  
| pedestal from a conforming base  
| \$800 - \$1200
- 455 | New Zealand chip carved, two tier  
| occasional table  
| \$150 - \$250



454



- 456 | Maori folk art occasional table, carved  
| to the circular top with a tiki figure  
| and scrolls, raised on three carved  
| Maori figural pedestals  
| \$600 - \$800



457 | 1950s shell art circular small coffee table,  
the top depicting a kiwi  
\$200 - \$300

458 | Folk art tekoteko.  
H.1350mm  
\$60 - \$120

459 | Four kauri institutional hall chairs  
each with circular back pierced and  
carved with a monogram AS  
\$500 - \$800

460 | Malcolm Harrison  
hand stitched quilt, the circular centre  
panel depicting a caged bird  
signed and dated 1993  
1600 x 2260mm  
\$800 - \$1200

461 | Rare Luke Adams pottery fruit bowl,  
faintly backstamped.  
W.350mm, H.110mm  
\$300 - \$400



462 | Luke Adams teapot  
Unmarked but this shape illustrated in New  
Zealand Pottery, Commercial and Collectable.  
H.100mm  
Lug to the interior of lid snapped off  
\$200 - \$300

463 | Crown Lynn, Shufflebottom  
cylindrical vase  
hand lathed by Jack Aberly; Factory mark.  
H.370mm  
chip to footing.  
\$600 - \$800

464 | Crown Lynn 'branch' vase,  
Made in New Zealand' backstamp; light green  
and cream trickle glaze.  
H.265mm  
\$300 - \$400



465 | Crown Lynn Steenstra avant garde vase  
shape #10. Incised mark Hand Potted, instead  
of the normal Crown Lynn so possibly an  
experimental design – the raised dot pattern  
with a different number to the usual design.  
H.135mm  
\$300 - \$400



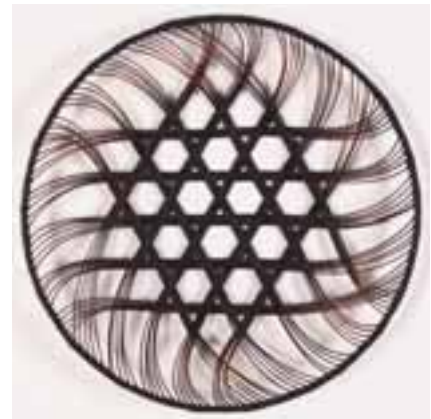
466 | Ruth Castle – large platter;  
dyed rattan core and phoenix palm tendrils.  
\$160 - \$200

467 | Ruth Castle – sculptural form (twist)  
dyed rattan core  
\$100 - \$150

468 | Ruth Castle – Onion basket,  
dyed rattan  
\$90 - \$120

469 | Ruth Castle – circular dish  
(fish basket technique), dyed rattan core  
\$100 - \$150

470 | Ruth Castle – circular dish  
(Star of David pattern) dyed rattan core  
\$120 - \$160



471 | Ola and Marie Hoglund blown glass vase  
blue body with green mouth,  
signed and dated 1995  
\$100 - \$150

472 | Six Len Castle tenmoku glazed bowls  
\$300 - \$400

473 | Stoneware crock, tenmoku glaze,  
attributed to Barry Brickell  
\$200 - \$300



- 474 | Olive Jones large green glazed vase  
with a leaf pattern incised to the shoulder,  
firing flaws. H.230mm  
\$200 - \$400



- 480 | Four Briar Gardiner trough vases  
\$80 - \$120

- 481 | Olive Jones pale blue bowl.  
D.130mm  
\$40 - \$80



- 484 | Two bowls by Crown Lynn,  
pale mauve glazed, unusually footed  
with button mushrooms  
\$200 - \$300

- 485 | Four small Crown Lynn vases  
in various coloured glazes  
\$150 - \$200



- 475 | Briar Gardiner pottery vase  
bowl and small jug  
\$150 - \$250

- 482 | Te Mata stoneware vase, green glazed,  
incised to the shoulder with koru inspired  
spirals. H.230mm  
\$125 - \$225

- 486 | Five small Crown Lynn vases  
various coloured glazes  
\$200 - \$250



- 476 | 19th century Temuka pottery dish  
with daubed russet glaze.  
\$200 - \$300



- 477 | Briar Gardiner pottery vase  
mauve glazed.  
H.80mm  
\$100 - \$200

- 478 | Briar Gardiner squat ovoid bowl  
green and mauve glaze.  
D.180mm  
\$200 - \$300

- 483 | Crown Lynn topedo shaped vase  
blue glazed. H.180mm  
\$100 - \$150

- 487 | Pair of squat tiki salt and pepper  
in the manner of Wharehana ware  
\$250 - \$300



- 479 | Small Briar Gardiner bowl  
pale blue, red and green glaze.  
D.90mm  
\$80 - \$120

- 488 Stoneware portrait bust of a Maori chief  
in the manner of Wharetana ware  
\$125 - \$200



- 489 Titian pottery wahine jug  
in rare yellow glaze  
\$400 - \$500



- 490 Dutch Gouda stoneware wall plate,  
painted with kiwis in a landscape.  
Retailer's marks verso Gibson Patterson Ltd.  
D.270mm  
\$350 - \$450



- 491 Pair of Frank Carpay for Crown Lynn  
plates, painted with green and aubergine bands  
to the rim, unmarked  
\$100 - \$200

- 492 Dorothy Thorpe for Crown Lynn  
Palm Springs coffee pot with ball handled  
lid and additionally three cups and saucers  
and a sugar bowl  
\$800 - \$1000



- 493 Dorothy Thorpe for Crown Lynn  
Santa Barbara pattern three ball handled  
cups and painted pattern saucers along  
with a ball handled milk jug  
\$200 - \$300



- 494 Dorothy Thorpe for Crown Lynn  
Monterrey pattern pair of ball handled  
cups, saucers along with a ball handled  
milk jug  
\$150 - \$250



- 495 Dorothy Thorpe for Crown Lynn  
Monterrey pattern set of two dinner  
plates, six loop handled cups and five  
saucers along with a milk jug  
\$100 - \$200



- 496 Dorothy Thorpe for Crown Lynn  
Pine pattern part dinner service  
\$100 - \$200

- 497 Dorothy Thorpe for Crown Lynn  
Palm Springs pattern bowl and Laguna  
pattern bowl  
\$50 - \$100

- 498 Two Crown Lynn Hand Potted  
float bowls  
shape 54 and 55, together with a Flair  
white glazed pottery dish  
\$100 - \$200

- 499 | Dorothy Thorpe for Crown Lynn  
 Pine coffee service, complete with six cups and saucers, coffee pot with golf ball handled lid and milk jug with same handle  
 \$2000 - \$3000



- 500 | Four Crown Lynn Expo 70 plates  
 stoneware  
 \$200 - \$300

- 501 | Len Castle red lava glazed porcelain bowl.  
 Impressed with artist's initials under foot.  
 H.130mm, D.280mm  
 \$600 - \$800



- 502 | Len Castle stoneware decanter  
 with umber pigmented exterior and glazed interior; Impressed affixed rondel of stag's antlers (for the NZ Deer Stalkers Assn).  
 H.220mm  
 \$300 - \$400



502

- 503 | Len Castle wall vase,  
 rolled 'knuckle' form with single aperture and combed surfaces, umber pigmented. Impressed with artist's cipher.  
 W.220mm  
 \$300 - \$400



- 504 | Len Castle cylindrical brushpot/vase  
 with banded incised walls, ash glazed over umber body. Impressed with artist's initials.  
 H.220mm  
 \$200 - \$300



- 505 | Len Castle porcelain bowl, with celadon glaze  
 combed pattern to the well. Impressed artist's initials under foot. D.210mm  
 \$200 - \$300

- 506 | Luke Adams pottery waisted vase  
 with treacle glaze. Impressed mark.  
 H.230mm  
 \$150 - \$200



- 507 | Potter unknown,  
 slip cast tapering square section vase decorated with a tekoteko figure.  
 H.220mm  
 \$100 - \$150

- 508 | Olive Jones squat circular vase  
 with trumpet mouth, bright apple green glaze, Incised signature.  
 H.125mm  
 \$300 - \$400



- 509 | Olive Jones celadon glaze squat vase.  
 Incised signature.  
 D.130mm  
 \$80 - \$120

510 | Olive Jones celadon glaze ovoid vase.  
| Incised signature.  
H.140mm  
\$80 - \$120

511 | Olive Jones squat circular small celadon dish  
| together with another with lemon glaze.  
D.110mm, D.90mm  
\$40 - \$60

512 | Olive Jones small koruru faced ashtray.  
| Incised signature. c.1940.  
W.85mm  
\$400 - \$500



512A | Olive Jones napkin ring decorated  
| with applied manuka flowers  
\$60 - \$100



513 | Olive Jones small ox-blood glazed vase.  
| Incised signature.  
D.85mm  
\$50 - \$80



514 | Potter unknown, small circular ashtray  
| with relief tiki/koru moulded to the rim.  
| Incised initials MM.  
D.85mm  
\$100 - \$150



515 | Miniature vase, unknown potter,  
| kowhaiwhai patterned.  
H.50mm  
\$20 - \$40

516 | Hand built trough vase, signed Mollé.  
| Toadstools applied to the front wall.  
W.235mm  
\$20 - \$40

517 | Briar Gardiner squat circular vase.  
| blue/green glazed  
D.120mm  
\$80 - \$120

518 | Briar Gardiner squat circular vase.  
| green/yellow glazed  
D.125mm  
\$50 - \$80

519 | Briar Gardiner lemon glazed vase.  
| Dated '36.  
H.82mm  
\$50 - \$80

520 | Briar Gardiner small centennial dish.  
| D.82mm  
\$20 - \$30

521 | Briar Gardiner trough vase.  
| W.220mm  
\$125 - \$175



522 | Unknown potter: Slip cast tiki.  
| Marked with running legs cipher.  
H.140mm  
\$40 - \$60

523 | Wally Silva pottery jug,  
| painted by Ivy Williams  
\$10 - \$20

524 | 1940s paua shell clad lamp base.  
| H.180mm  
\$30 - \$40

525 | Janus tiki figural carved lamp base  
| with pierced metal, fabric lined shade.  
H.520mm  
\$100 - \$150

526 | New Zealand pokerwork newspaper rack  
| \$80 - \$100

527 | Pair of carved tiki table lamp bases  
| inscribed: Carved by P H Leonara,  
28/12/72. H.410mm  
\$200 - \$400



530

528 | Royal Doulton miniature flambé glazed model of a hare  
\$220 - \$260

529 | Royal Doulton miniature flambé glazed model of a reclining rabbit  
\$150 - \$200

530 | Moorcroft Florianware salt and pepperette.  
Slip trailed poppy design in blue and white, silver plated covers. Printed factory marks and painted initials  
\$1100 - \$1300



535



531

531 | Étui of Continental silver mounted saw, needle case, thimble, perfume bottle and miniature scissors, in tooled leather case, circa 1820  
\$1100 - \$1400

532 | French gilt-metal inkstand set with a Limoges porcelain panel portrait of a woman.  
\$200 - \$250

533 | 19th century miniature tantalus the walnut case with a hinged lid and glazed fall front revealing three small cut crystal decanters  
\$800 - \$1000

534 | Chamberlains Worcester teabowl c.1790, cup and saucer c.1797, Caughley slop bowl c.1780, each spiral fluted with blue glaze and gilt floral highlights and a plain Caughley fluted tea bowl  
\$700 - \$900



538



533

535 | Squat shoulder vase by Keith Murray for Wedgwood, matt green. Factory printed marks and full facsimile signature.  
W.275mm, H.160mm  
\$2400 - \$2600

536 | Tapering lathe turned vase by Keith Murray for Wedgwood duck egg blue. Factory printed marks and initials.  
H.240mm chip to footring  
\$1000 - \$1500

537 | Keith Murray flat rimmed shallow bowl matt green. Factory marks with facsimile signature. Stained.  
D.360mm  
\$100 - \$200

538 | Pair of Keith Murray matt green candlesticks.  
Facsimile signature mark.  
H.75mm  
\$200 - \$300



539 Clarice Cliff Honolulu pattern cylindrical vase.  
Printed factory marks and incised shape number 194.  
H.286mm  
\$2500 - \$3500

540 Tudric pewter torpedo vase, numbered 0226, designed  
by Archibald Knox, with scrolling foliate designs centred  
by turquoise enamel bosses.  
H.185mm  
\$400 - \$500

541 Shelley Mode 'Sunburst' pattern coffee service, of four  
cups and saucers, milk jug and coffee pot, hairline to lid  
\$1500 - \$2000

542 Art Deco figurine in spelter gilt and ivorine – a woman  
and hound, raised on an onyx and black marble plinth  
base. W.720mm  
\$500 - \$750

543 William Moorcroft baluster vase. Leaf and berry pattern.  
Impressed factory mark and painted initials to the base.  
H.160mm  
\$800 - \$1200

544 William Moorcroft small ovoid flambé glaze vase. Leaf  
and berry pattern. Impressed factory mark and painted  
initials to the base.  
H.90mm  
\$500 - \$700

545 Walter Moorcroft mallet form vase. Pomegranate  
pattern. Impressed factory marks and painted  
initials to the base.  
H.150mm  
\$600 - \$800



539



541

550



- 546 | A Walter Moorcroft tazza  
| wisteria pattern on a plated silver stand.  
D.190mm  
\$250 - \$350

551



- 549 | A Doulton Burslem three-piece stoneware  
| tea set. Each piece with sterling silver rim  
\$150 - \$200

552



- 552 | A Royal Doulton mallet shaped vase  
| with art nouveau inspired hand painted floral  
decoration. H.190mm  
\$250 - \$350

- 547 | A Walter Moorcroft ovoid vase  
| with hibiscus pattern.  
H.140mm  
\$200 - \$300

- 550 | A Doulton Lambeth vase  
| relief moulded with an art nouveau inspired leaf  
and floral pattern in green and yellow on a blue  
ground. H.260mm. Faulted.  
\$40 - \$80

- 553 | Japanese Meiji period bronze study of a  
| tiger attacking an hippopotamus. Expressively  
modelled, finely patinated, the tiger with vari-  
striped hid, glass eyes. Hippo's glass eyes absent.  
Along with an associated later fine lacquered  
wood stand W.490mm  
\$5000 - \$6000

- 548 | A Doulton Burslem jug  
| transfer printed decoration commemorating  
the life of the poet laureate Alfred Tennyson  
(1809-1899)  
\$90 - \$150

- 551 | A Royal Doulton Lambeth stoneware vase  
| of ovoid shape with art nouveau inspired hand  
painted floral decoration.  
H.150mm  
\$200 - \$300



553

554 | Meiji period Japanese bronze study of an elephant.  
| Modelled trumpeting, with ivory inset tusks, four character  
| seal mark impressed under belly,  
| W.325mm  
| \$1500 - \$2000

555 | Japanese Meiji period bronze study of an elephant.  
| Three character signature on tablet under belly.  
| W.285mm  
| \$1200 - \$1800



560

556 | A late Meiji period bronze vase  
| of baluster shape with mythical kylin handles cast in  
| high relief.  
| H.330  
| \$100 - \$200

559 | Chinese ivory tusk section tea caddy  
| with rosewood base and lid. The walls carved with  
| landscape scenes reserved in lozenge shaped panels  
| on a scroll ground.  
| W.160mm  
| \$750 - \$1000

562 | A Japanese ivory figure of a street  
| entertainer  
| \$150 - \$200

557 | Carved wooden Chinese lintel and supports  
| from an opium bed, painted red and  
| highlighted with gilt.  
| \$300 - \$400

560 | Two Chinese ivory puzzle balls on stands  
| carved with figures and elephants.  
| H.290mm  
| \$500 - \$750

563 | A Japanese Meiji period Satsuma vase  
| of ovoid shape with incipient mask handles to  
| the shoulder painted in raised enamels with  
| chrysanthemum flowers.  
| H.310mm  
| \$200 - \$300

558 | Carved Chinese wooden lintel and supports  
| possibly a window frame.  
| \$300 - \$400

561 | A Japanese ivory figure of Hotei  
| \$175 - \$225

564 | Chinese Qing dynasty Buddha plinth,  
| porcelain in bright enamels  
| \$125 - \$150



565 | Japanese shibiachi ivory handled magnifying glass  
\$125 - \$150



566 | Pair of Japanese samurai horseman's stirrups  
(abumi), 17th/18th century, iron inlaid with silver  
blossom pattern  
\$1200 - \$1500

567 | Two Indonesian shadow puppets  
of finely pierced and painted card, supported on  
slender horn sticks. Collected Jogjakata, c.1975  
\$250 - \$300

568 | Indonesian pit fired terracotta study of a goat.  
L.260mm  
\$80 - \$120

569 | Indonesian pit fired terra cotta study of a horse.  
H.380mm  
\$90 - \$130



570 | A late 18th century/ early 19th century Tibetan Thangka  
handpainted with Amitabha, in unusual blue colouration seated in his pure land of  
Dewachen flanked by the bodhisattvas Chenrezig and Vajrapani . The foreground  
with a lotus flower and numerous figures making offerings. Above his head stands  
the tantric Bodhisattva Vajrayogini. Tibetan script signature verso. Showing wear  
commensurate with its age, recently conserved.  
Conservation report available. 500 x 380mm  
\$1800 - \$2400

571 | A Large Tibetan Gau ( travelling shrine)  
| with Tsa Tsa of Yamantaka to the interior: The  
| iron case modelled with opposing dragons in relief.  
| 320 x 270mm  
| \$275 - \$325

572 | A Tibetan Gau (travelling shrine)  
| with a tsa tsa of a trantirc bodhisattva to the interior:  
| 160 x 110mm  
| \$80 - \$120

573 | Gilded wooden Laotian Buddha figure  
| together with a small gilded and lacquered Buddha  
| \$80 - \$120

574 | Late 19th century Tibetan camphorwood  
| butter tea offertory jug with copper spout and  
| cast dragon handle.  
| \$75 - \$150

575 | 19th century West Nepali hard wood door  
| entrance way  
| complete with lintel, supports and base board  
| carved with figures and dharmachakra emblems  
| \$1500 - \$1800

576 | Harlequin set of six Georgian Hepplewhite  
| style mahogany dining chairs,  
| each raised on square section legs untied  
| by stretchers  
| \$900 - \$1500

577 | Early 19th century mahogany corner cupboard  
| with glazed panelled door with astragal glazing bars  
| above a single drawer with inlay brass escutcheon.  
| 1020 x 800mm  
| \$1200 - \$1600

578 | A 19th century tapestry top stool  
| \$40 - \$80



576

579 | William and Mary period candle-stand  
| with oak scroll form legs supporting a cylindrical  
| column with yew wood parquetry top. The top showing  
| considerable wear. H.880mm  
| \$150 - \$300

580 | A 19th century gilt-wood corner shelf.  
| \$200 - \$300

581 | A late 19th century burr walnut corner cabinet.  
| H.590mm  
| \$80 - \$120

582 | A 19th century Georgian style stool  
| raised on cabriole legs with hoof feet. W.460mm  
| \$200 - \$300



- 583 | Chinoiserie kneehole desk  
 | with a full width drawer above a recessed cupboard  
 | flanked by small drawers raised on bun feet. 18th century  
 | and later. W 860mm, H.800mm  
 | \$2000 - \$3000



- 584 | Edwardian Georgian style wingback armchair  
 | upholstered in lemon self pattered brocade, raised on  
 | tapering legs with brass castors  
 | \$300 - \$400

- 585 | William IV mahogany pier glass,  
 | the mirror flanked by split columns. H.1280mm  
 | \$200 - \$300

- 586 | 19th century Italian Empire style canapé  
 | upholstered in striped silk. Mahogany framed, the arms carved  
 | with stylized swans, raised on sabre legs. Purchased Semenzato  
 | Auctioneers, Venice, 1998  
 | \$1000 - \$1500



- 587 | Venetian secretaire à abbatant,  
 | painted exuberantly with bouquets of summer flowers on a  
 | pale celadon green ground. Of serpentine outline with slightly  
 | bombe shaped fall below a single drawers opening to reveal a  
 | fitted interior with small drawers and compartments. Raised on  
 | cabriole legs. W.760mm, H.1320mm  
 | \$3000 - \$4000



588 | George III flame mahogany linen press  
 of attractive small proportion. The upper section with Greek fret cornice, the frieze with satinwood and ebony paterae motifs above two doors enclosing five original sliding trays. The lower section with two cockbeaded drawers above a full width drawer, raised on bracket feet. W. 1140mm, H. 2020mm  
 \$5000 - \$6000



589 | Early Georgian walnut chest on stand.  
 The upper section with a plain cavetto cornice, three small drawers with brass handles above three full width graduated drawers, with oak lining. The lower section with two drawers above one single deep draw. Raised on cabriole legs (possibly later). W. 1035mm, H. 1820mm  
 \$8000 - \$9000



591 | Ferdinando Vichi (1875-1945)  
 | *Sea Nymph*  
 Carrara marble  
 signed F.Vichi Firenze  
 680 x 330 x 420mm  
 \$5000 - \$10 000



592

593

592 | Georgian walnut telescopic table stand,  
 | with lead weighted circular ogee turned foot, baluster  
 column and circular platform raised on a brass rod.  
 H.190mm  
 \$300 - \$400

597 | Aesthetic period display cabinet  
 | ebonized with figured walnut door fascia,  
 raised on turned supports. W.1000mm  
 \$650 - \$900

593 | A similar slightly shorter table stand to above.  
 | H.170mm  
 \$300 - \$400

598 | Pair of Georgian side chairs  
 | mahogany framed  
 \$200 - \$300

594 | 19th century walnut sarcophagus shaped tea  
 | caddy.  
 W.190mm  
 \$250 - \$300

599 | A Victorian parlor chair  
 | with cameo back raised on turned legs  
 \$125 - \$200

595 | Syrian tea table  
 | inlaid in bone and mother of pearl, screen friezes  
 to the sides, raised on turned legs.  
 \$400 - \$500

600 | A late Victorian corner chair  
 | with tapestry upholstered seat  
 \$100 - \$175

596 | Edwardian ebonized display cabinet,  
 | with mirrors to the upper section, the lower  
 section with glazed doors, raised on cab legs  
 \$600 - \$800

601 | A Victorian tapestry pole screen  
 | mahogany, raised on a later stand.  
 H.1440mm  
 \$350 - \$500

602 | Extremely rare pair of Scottish provincial sterling silver, fiddle pattern toddy ladles. Both with initial L in script to the handle. Maker: Andrew Davidson of Arbroath, c.1835. Hallmarked with maker's mark AD; two crowned head marks and portcullis mark. L.150mm. Arbroath, known previously as Aberbrothock owes its existence to its abbey. Founded in 1178 by William the Lion, the town became a Royal Burgh in 1599. While the portcullis mark is based on the Arbroath Burgh Seal (ref Jackson pg588) only two of Arbroath's smiths – George Ritchie and Andrew Davidson (active 1825 – 1850) had marks ascribed to them and used the portcullis punch (ref *Scottish Gold and Silver Work, Ian Finlay, pg226*)  
\$2500 - \$3000



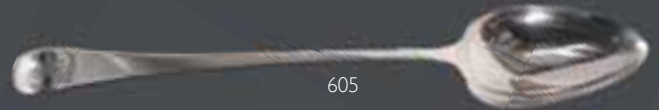
603 | Six Old English pattern sterling silver tablespoons.  
London 1823 by William Bateman.  
\$500 - \$900



604 | Sterling silver, fiddle thread pattern fish slice with 'comma' pierced blade. Crested with a griffin.  
London 1827 by William Kingdon  
\$325 - \$425



605 | George III sterling silver pie spoon.  
Old English pattern. Crested with an eagle. London 1776 by John Lambe  
\$450 - \$550



606 | Victorian thread pattern marrow scoop, the larger bowl back with trefoil leaf decoration. Crested with a harvest maid and a swan head. London 1855 by John Samuel Hunt. L.230mm  
\$450 - \$550



607 | A 'Noggin' – a crystal whisky measure, of conical shape with sterling silver mounts. Baker Bros., Birmingham, 1958. H.105mm  
\$150 - \$250



608 | Victorian sterling silver fiddle pattern butter/serving knife. Monogrammed CET in script to the handle. Charles Boyton & Son, London 1881  
\$110 - \$190



610

- 610 | Georgian Old English pattern sterling ladle.  
| Monogrammed R. London 1798 y John Blake.  
\$130 - \$200



611

- 611 | Pair of sterling silver berry spoons  
| with gilt washed bowls. Each monogrammed B. London  
| 1815 by Thomas Wallis and Jonathon Hayne.  
\$375 - \$425



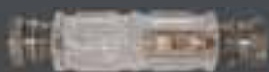
612

- 612 | Sterling silver bell rattle with ivory teether ring  
| by Deakin and Francis, Birmingham 1977  
\$100 - \$150



613

- 613 | 9ct gold chain with 1891 full sovereign  
| and sterling silver sovereign case.  
\$1250 - \$1500



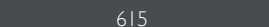
614

- 614 | Sterling silver lidded, double ended ruby glass  
| scent bottle  
| with ten faceted sides, hinged cap encloses original  
| stopper. L.105mm  
\$350 - \$450

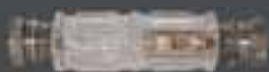


615

- 615 | Victorian crystal double ended scent bottle,  
| fluted and cut walls, fitted with unmarked silver hinged  
| and screw caps with foliate chasing and remnants of  
| gilding. L.135mm  
\$450 - \$550



- 616 | Edwardian sterling silver double sovereign case,  
| Birmingham 1905  
\$125 - \$200



- 617 | Chinese silver card case.  
| Heavily repoussé to one side with a dragon amongst  
| swirling clouds, verso with cherry blossom boughs.  
\$125 - \$200



- 618 | Sterling silver card case, engraved  
| with foliate scrolls. Birmingham 1900.  
\$125 - \$200



- 619 | Continental silver bombé miniature box,  
| with English silver import marks, chased and  
| engraved to the walls and lid.  
\$225 - \$300
- 620 | Sterling silver card case,  
| by Walker and Hall, Sheffield 1926  
\$175 - \$225
- 621 | Pair of sterling silver sugar tongs  
| by William Fearn, London 1826  
\$75 - \$100
- 622 | Pair of sterling silver sugar tongs  
| by George Wintle, London 1805  
\$75 - \$100
- 623 | A set of six American sterling silver forks.  
| Circa 1910  
\$80 - \$120
- 624 | A sterling silver candlestick.  
| H.80mm  
\$80 - \$120
- 625 | A sterling silver cigarette case  
| \$40 - \$60
- 626 | A sterling silver sugar basin.  
| Birmingham 1907. D.120mm  
\$200 - \$300
- 627 | A Georgian toddy ladle  
| with sterling silver bowl and turned  
| wood handle  
\$150 - \$200
- 628 | Georgian sterling silver teapot on stand.  
| Hallmarks for London 1816. H.220mm  
\$700 - \$1000
- 629 | A sterling silver castletop card case.  
| Birmingham 1855 by David Pettifer. l.100mm  
\$800 - \$1200
- 630 | A pair of sterling silver candlesticks. H.180mm  
| \$250 - \$350
- 631 | A sterling silver pepper pot. H.90mm  
| \$150 - \$200
- 632 | A Victorian sterling silver christening mug.  
| Sheffield 1891. H.85mm  
\$150 - \$200
- 633 | Edwardian sterling silver trumpet shaped vase.  
| London 1907. H.160mm  
\$100 - \$200
- 634 | Edwardian inkwell in a sterling silver stand.  
| Hallmarks for Birmingham 1901. W.80mm  
\$100 - \$200
- 635 | A Continental art deco silver tea pot and  
| matching coffee pot.  
Each hammer finished with rosewood finial and handle  
\$300 - \$400
- 636 | An Edwardian sterling silver tea pot.  
| Hallmarks for Birmingham 1905.  
\$150 - \$200
- 637 | A Georgian sterling silver tea pot  
| of oblong bulbous shape on four ball feet with  
| ivory finial and handle. Hallmarks for London  
| 1810 by Rebecca Emes and Edward Barnard  
\$800 - \$1200
- 638 | A pair of Georgian sterling silver sugar tongs.  
| Hallmarks for London 1929  
\$50 - \$100
- 639 | A Victorian sterling silver sugar basin.  
| Hallmarks for London 1846  
\$300 - \$400
- 640 | A Georgian sterling silver salt cellar:  
| Oblong shape on four ball feet. Glass liner  
| absent. London 1808  
\$200 - \$300
- 641 | A pair of American sterling silver vases.  
| H.75mm  
\$100 - \$200
- 642 | A sterling silver trophy cup.  
| London 1931. H.190mm  
\$275 - \$350
- 643 | A Liberty and Co. *Cymric* sterling  
| silver three-piece tea set.  
The pot of circular Arabian lamp form with  
a cane bound handle and pressed fit lid, the  
sugar basin and milk jug with matching  
whiplash handles. Birmingham 1904  
\$800 - \$1200
- 644 | A sterling silver rose bowl.  
| Chester 1912. D.150mm  
\$150 - \$200
- 645 | A Georgian sterling silver tankard  
| with presentation engraving cartouche.  
Presented by EE to EEP 1839.  
London 1809. H.90mm  
\$700 - \$850
- 646 | A sterling silver bon bon dish  
| with flying scroll handles. London 1902. H.120mm  
\$150 - \$250
- 647 | A three-piece sterling silver tea set  
| with cast duck head terminals to the handles.  
Birmingham 1913.  
\$500 - \$800
- 648 | A sterling silver three-piece tea set,  
| the teapot with ebonised handle.  
Hallmarks for Sheffield 1920  
\$400 - \$600

## THE W (BILL) PHILLIPPS COLLECTION OF CLOCKS AND TIMEPIECES



649

- 649 | John Bruce & Sons, chronometer:  
19th century. Gimbal mounted. Silver dial marked John Bruce & Sons, 27 Wapping, Liverpool and in banderoles: Gold Medal Liverpool 1886. Roman numerals. Subsidiary seconds dial at VI and 56 hour down and up at XII; gold fine spade hands. Dial diameter 99mm. In mahogany triple layer case with brass bindings, handles and escutcheon, the upper layer replaced, glass and shield absent.  
180 x 180 x 190mm  
\$3500 - \$4000



650

- 650 | Omega deck chronometer, number 5896535.  
Gimbal mounted. Silver dial marked Omega Chronometre de Bord. Arabic numerals. Subsidiary seconds at 6, blued steel hands. Dial diameter 65mm. In mahogany case.  
120 x 120 x 100mm  
\$1100 - \$1600

- 651 | G Laing, Edinburgh, bracket clock  
in rosewood veneered and carved case. Silvered dial with Roman numerals, marked No 1908, blued steel Breguet hands. c.1820. H.355mm  
\$1500 - \$2000



651

- 652 | German late 19th century beech cased musical mantel clock.  
With gilt-metal spandrels, white enamel dial with Roman numerals. H.360mm  
\$350 - \$400

652

- 653 | French Napoleonic alabaster pilaster clock,  
c.1790. The brass drum cased movement surmounted by  
an urn finial and with gilt-metal fruiting vine frieze set with  
a porcelain cameo flanked by twin classical pilasters, each  
surmounted by urns and with ormolu mounts. White  
enamel dial with Arabic numerals, marked *Folin Laine a*  
*Paris*. H.500mm  
\$3500 - \$4000



653



654

- 654 | Eureka Clock Co., London, skeleton battery clock.  
Early 20th century. White enamel and brass chapter ring  
with Arabic numerals, the movement marked with patent  
number and dated 1906. Beveled glazed mahogany case  
with plinth base. H.260mm  
\$1600 - \$2000

- 655 | Early 20th century French brass, four glass clock  
with white enamel dial, Brocot-type escapement, Roman  
numerals, mercury compensated pendulum. H.295mm  
\$700 - \$900



655

- 656 | 19th century brass ship's wall clock  
with fusee movement, c.1850. Brass dial with engraved  
Roman numerals, visible escapement, steel Breguet-type  
hands. D.205mm  
\$800 - \$1000



656

- 657 | Victorian brass skeleton clock,  
chain fusee drive with recoil escapement, filigree chapter  
ring with Roman numerals on alabaster plinth base with  
glass dome, (faulted). H.360mm  
\$1250 - \$1750



657

- 658 | French brass four glass clock,  
white enamel dial with open escapement. H.305mm  
\$700 - \$800



658

- 658A | Victorian skeleton brass framed clock  
fusee movement, scalloped and filigree chapter ring, with  
Roman numerals. Breguet-type hands. Under glass done  
(replaced) and on wood plinth. H.440mm  
\$1000 - \$1500



658A



659

659 | American Elgin nickel plated cased deck watch with naval markings. Numbered 8664. In oak deck case  
\$350 - \$450

660 | Victorian black marble cased mantel clock with white enamel chapter ring, silvered dial, Brocot-type escapement, blued hands.  
\$300 - \$400

## TIMEPIECES FROM OTHER VENDORS



661

661 | Rotherhams, London 14ct rolled gold cased hunter pocket watch, circa 1900. White enamel dial, Roman numerals, blued steel hands, subsidiary seconds dial. Lever wind, temperature compensated, over-coil, 19 jewelled movement. Running. Slight wear to case.  
\$450 - \$550



662

662 | Omega pocket watch in Dennison 10ct rolled gold open face case. White enamel dial, Roman numerals, gilt ahnds, subsidiary seconds dial. Lever wind, temperature compensated, over-coil hairspring, 15 jewelled movement. Running. Chip on dial.  
\$250 - \$350



663

663 | English 18ct gold hunter cased pocket watch, hallmarked for 1874. Rotherhams keywind fusee movement with 9 jewels, White enamel dial, Roman numerals, subsidiary seconds dial. Along with 15ct gold chain and brass key. Some faults to case. Running.  
\$1500 - \$2000



664

664 | Swiss split seconds chronograph in 18ct gold hunter case. White enamel dial, Roman numerals, outer pulsations ring, subsidiary seconds and elapsed minutes dials, two centre seconds hands. Temperature compensated, over-coil hairspring. Late 19th century. Presentation engraved case.  
\$1750 - \$2500



676



675



666



681

665 | A French carriage clock.

| White enamel face with roman numerals. Complete with original leather travelling case. H.100mm

\$500 - \$600

670 | A Laliqre frosted crystal table lighter

| with lion masks moulded in relief. Etched post 1945 mark. H.130mm

\$200 - \$300

676 | A Laliqre blue crystal vase

| arabesque pattern made for Selfridges London 1999. Limited edition 208/250. H.130mm

\$400 - \$600

666 | A Rene Laliqre archers vase,

| the gray tinted glass decorated with flying cranes pursued by lithe archers. Designed 1921. Reference: Laliqre by Marchilhac p.415 catalogue number 893 H.260mm. Intagilo moulded R Laliqre France.

The base with small drilled hole probably to convert the vase to a lamp base, the hole now filled and polished

\$3000 - \$4000

671 | A set of four Laliqre crystal wine glasses

| \$200 - \$250

677 | A Laliqre green tinted crystal frog.

| Original box. 1.60mm

\$150 - \$250

672 | A Laliqre Gui pattern crystal plate.

| Etched post 1945 mark D.210mm

\$200 - \$300

678 | A Laliqre green tinted crystal frog.

| Original box. 1.60mm

\$150 - \$250

667 | A Laliqre frosted crystal sparrow,

| small chip to foot. Etched post 1945 mark W.110mm

\$125 - \$175

673 | A Laliqre frosted crystal figure.

| W.90mm with original box

\$150 - \$250

679 | Laliqre blue tinted crystal angel fish.

| Original box. H.50mm

\$150 - \$250

668 | A Laliqre crystal ashtray with Lion mask.

| Etched post 1945 mark D.150mm

\$200 - \$250

674 | A Laliqre crystal car mascot dove wreath.

| D.70mm with original box

\$150 - \$250

680 | A Laliqre green tinted Salamander.

| Original box. 1.160mm

\$200 - \$300

669 | A Laliqre pedestal bowl

| with frosted crystal stem with four Robins modeled in relief. Etched post 1945 mark. D.140mm

\$250 - \$300

675 | A Laliqre red crystal vase

| arabesque pattern made for Selfridges London 1999. Limited edition 226/250. H.130mm

\$400 - \$600

681 | Laliqre yellow tinted crystal Gaura bird.

| Original box. W.120mm

\$175 - \$225



682 | A Meiji period Satsuma vase  
| painted in enamels with birds and bamboo.  
H.190mm  
\$200 - \$300

683 | A Satsuma vase painted  
| with pagoda houses beside a river. H.250mm  
\$150 - \$250

684 | A Satsuma plate  
| painted with butterflies and floral decoration.  
D.150mm  
\$80 - \$120

685 | A Japanese Satsuma vase  
| with profuse floral decoration. H.170mm  
\$100 - \$200

686 | A pair of late Meiji period Satsuma plates,  
| one painted with dogs and floral decoration the  
| other with a nesting bird and butterflies. D.160mm  
\$175 - \$225

687 | A pair of small Satsuma vases  
| with floral decoration. H.90mm  
\$150 - \$250

688 | A Japanese tapering octagonal cloisonné vase  
| with profuse floral decoration. H.160mm  
\$80 - \$120

689 | Pacific Island paddle club.  
| L.1050mm  
\$400 - \$500

690 | Two African ivory tusk elephant bridges  
| \$300 - \$400

691 | A Victorian porcelain ewer  
| with profuse floral decoration modeled  
| in relief. H.170mm  
\$100 - \$150

692 | An Art Nouveau inspired green glass vase  
| with wreath pattern gilt overlay. Reputed to have  
| been made for the 1925 Dunedin exhibition.  
| Small chip to the top rim. H.390mm  
\$150 - \$250

693 | A 19th century Meissen jug hand-painted  
| with a gentleman courting a young lady. Erased  
| cross swords mark to the base. H.130mm  
\$100 - \$150

694 | An Arts and Crafts circular copper tray  
| together with an art nouveau copper tray  
| with cast brass handles  
\$100 - \$200

695 | An English Arts and Crafts pottery vase,  
| ovoid with handles to the shoulder; decorated in  
| muted tones of brown, yellow and blue with a  
| figure of a young maiden. H.240mm  
\$180 - \$240

696 | A portrait miniature of a gentleman  
| in the Georgian manner. In a fitted leather case  
\$200 - \$300



695

697 | A portrait miniature of a gentleman  
| in the Georgian manner. In a fitted leather case  
\$200 - \$300

698 | 19th century portrait miniature  
| of William Saendir in a black ebonised frame.  
L.180mm  
\$200 - \$300

699 | An Italian jewellery casket, the top painted  
| with a portrait of a lady. D.90mm  
\$50 - \$100

700 | A portrait miniature of a lady.  
| D.70mm  
\$125 - \$200

701 | A nineteenth century portrait miniature  
| of a gentleman. D.70mm  
\$200 - \$300

703 | 19th century bohemian blown glass wine  
decanter:  
H.330mm  
\$150 - \$200



703

704 | A Staffordshire figure group of a young couple  
flanking a miniature house with two rabbits. W.150mm  
\$150 - \$200



706



707

705 | A pair of Staffordshire spaniels.  
H.300mm  
\$250 - \$350



708

706 | A Georgian decanter  
with triple neck rings and mushroom stopper: H.250mm  
\$200 - \$300



709



710

707 | A Georgian decanter  
with triple neck rings and mushroom stopper: H.250mm  
\$200 - \$300

708 | A cut crystal decanter  
in the Georgian style with sterling silver  
collar and sterling silver whisky label. H.240mm  
\$150 - \$200

710 | A nineteenth century celery vase.  
H.240mm  
\$150 - \$250

712 | A nineteenth century green glass vase  
painted with a portrait medallion of a  
young lady. H.280mm  
\$200 - \$300

709 | 18th century German goblet  
with acid etched decoration. Pinned  
repaired circular foot. H.210mm  
\$200 - \$300

711 | A cased Staffordshire Hughes and Co.  
demitasse coffee set  
\$200 - \$300



717

717 | Golden Arrow pressed steel racer  
| by Kingsbury,  
| 1930s toy based on the 1929 land speed record  
| breaking car (231.36 mph). Wind-up mechanism  
| working, original driver and windshield, *Dunlop Cord*  
| *Racing* marked tyres in good condition. L.500mm  
| \$2000 - \$3000



714

718 | Four Swatch automatic watches  
| from the early '90s along with six annual catalogues  
| and a 1998 guidebook. *Black Motion 1991, Red Ahead*  
| 1992, *Francois 1er 1992* and *Black Circles 1993*  
| \$200 - \$300



719

719 | Pair of electric 'candle' sconces  
| with Venetian mirror backs framed in blue glass  
| \$300 - \$400



720

720 | Large Pooler, Carter Stabler, Adams  
| beaker vase. Painted with an encircling  
| band of grapes and vine leaves. Chip under  
| footring. H.280mm  
| \$500 - \$600



721

721 | Large Satsuma shoulder vase  
| painted with two panels of families in interiors  
| with views out to mountainous landscapes. Two  
| character signature Hododo under foot. H.360mm  
| \$500 - \$700

713 | A large nineteenth century chemists'  
| milk glass Arrowroot jar  
| with lion and unicorn crest. Lid absent.  
| H.800mm  
| \$450 - \$500

715 | Dutch silver clog ashtray,  
| embossed with a milk maid in a rural landscape  
| \$60 - \$90

714 | Sterling silver and crystal inkwell,  
| Birmingham 1887  
| \$150 - \$250

716 | Cased sterling silver condiment set,  
| with four open salts, two pepperettes and  
| two mustard pots, Birmingham 1918  
| \$150 - \$250



722



723



729



733

722 | Gilt brass, four glass cased Ansonia clock.  
White enamel chapter ring with Arabic numerals, Brocot-type escapement, mercury-style compensated pendulum.  
\$400 - \$500

723 | Matthew Norman miniature carriage-style clock with Swiss movement.  
Brass cased. H.110mm  
\$150 - \$250

724 | Clarice Cliff vase modeled as a fish.  
H.260mm  
\$300 - \$400

725 | French marble and brass font together with two other fonts  
\$200 - \$300

726 | French Legion of Mary cross, silver plated on black glass base  
\$200 - \$300

728 | Cased apothecary's set of six bottles and a set of balance scales  
\$200 - \$300

729 | Miniature painted on ivory panel in ornate gilt gesso and oak frame. Brass plaque verso engraved: A Miniature Painted by Thomas Kirk Esqr.; Subject: Love blinds Prudence, Now in the Collection of Jno. Newington Hughes Esqr; No 131, 1842.  
370 x 335mm including frame  
\$1800 - \$2400

730 | A Minton Chinaman teapot. Archive collection, limited edition 869 of 2000.  
In original box  
\$400 - \$600

731 | A Royal Worcester cased demi tasse coffee set  
The porcelain cups and saucers with gilded interiors decorated in raised enamels on a black ground. The set complete with six sterling silver and enamel teaspoons.  
\$750 - \$1000

732 | A Royal Worcester porcelain crocus pot with pieced lid painted in three panels with small boats in a river beside a village by Gillian Moody. W.190mm  
\$4000 - \$5000

733 | A Royal Worcester King George III 200th anniversary porcelain vase, of campana urn shape painted with St Paul's cathedral by Bryan Cox. Limited edition number 146 of 200. This vase the only example signed by Bryan Cox. H.320mm  
\$6000 - \$7000

734 | A 19th century flintlock pistol  
| \$350 - \$500

735 | A 19th century flintlock pistol  
| \$350 - \$500

736 | A sterling silver Queens pattern ladle.  
| London 1842 by William Eaton  
| \$150 - \$250

737 | Sterling silver Scottish Kings pattern ladle.  
| Edinburgh 1826 by F and Sons  
| \$200 - \$300

738 | A Tiffany sterling silver cigarette case  
| with hammer finish detail  
| \$100 - \$200

739 | Pair of American sterling silver salt and pepper  
| castors  
| \$100 - \$200

740 | A pair of Russian 19th century cruet pots.  
| The upper section of ovoid shape, hinged and pierced  
| raised on a pedestal cast in the form of a lion from a  
| circular foot. 84 Zoloniks mark  
| \$100 - \$200

741 | A sterling silver hat pin cushion  
| modelled in the form of a pig. Birmingham 1906. L.110mm  
| \$375 - \$500

741A | A cased sterling silver Gainsborough Angels  
| dressing table set  
| comprising a clothes brush, hair brush and mirror.  
| \$350 - \$500

742 | A sterling silver presentation cup  
| with twin handles. Engraved inscription Presented to  
| Lieut Francis C. A Hurt Royal Welch Fusiliers by fellow  
| townsmen of Wirksworth in grateful acknowledgement  
| of services rendered during the South African War 1899-  
| 1902. Engraved Wirksworth crest. London 1901 by Hunt  
| and Roskell. H.110mm  
| \$600 - \$900

743 | A Japanese Meiji period cloisonné vase  
| decorated with flowers and birds on a blue ground.  
| H.190mm  
| \$200 - \$300

744 | A French majolica Sarregumines lidded dish  
| decorated with berries and leaves. D.220mm  
| \$150 - \$250

745 | A cut crystal scent bottle  
| with sterling silver collar  
| \$100 - \$150

746 | A Japanese Satsuma vase  
| of ovoid shape decorated with an  
| eagle pursuing a small bird. H.340mm  
| \$100 - \$200

747 | A Carltonware coffee set.  
| Bleu Royale pattern  
| \$100 - \$200

748 | Walter Moorcroft ovoid vase.  
| Wisteria pattern, impressed  
| factory marks and painted initials  
| to the base H.150mm  
| \$200 - \$300



748





751

- 749 | Walter Moorcroft baluster vase. Clematis pattern.  
| Impressed factory mark. h.140mm  
\$300 - \$400



755

- 754 | A pair of Chinese decorative ginger jars.  
| H. 370mm  
\$200 - \$300

- 750 | A decorative Chinese ginger jar polychrome  
| painted with children at play in a garden. h.190mm  
\$50 - \$100

- 755 | A Carltonware vase of tapering cylindrical shape.  
| Spider web pattern on a pale pink ground.  
H. 140mm  
\$100 - \$200

- 751 | Doulton Lambeth ware Admiral Nelson  
| commemorative mug  
| with scenes of the battle of Trafalgar and the epithet  
| 'England Expects that every man will do his duty'. h.92mm  
\$300 - \$400

- 756 | A nineteenth Century mahogany circular  
| supper table.  
| Raised on a central pedestal on three scroll legs.  
Diameter 1000mm  
\$200 - \$300

- 752 | A pair of Victorian silver plated candlesticks.  
| h.290mm  
\$100 - \$200

- 757 | An Arts and Crafts oak smoker's cabinet complete  
| with stoneware humidior.  
\$150 - \$200

- 753 | A Chinese decorative blue and white ginger jar:  
| h.350mm  
\$100 - \$200

- 758 | Nineteenth Century mahogany hall table  
| with white marble inset top raised on barley twist  
| supports on a platform base. W. 960mm  
\$500 - \$800

759 | A Continental late 19th Century Oak sideboard.  
| The upper section with inverted cornice above three panel cupboards. The central cupboard carved with figures seated by a well in high relief. The lower section with two frieze drawers above pannelled cupboards raised on flat bun feet. W. 140mm. H. 2400mm.  
\$1500 - \$2000

760 | An art deco milk glass globe lamp  
| with a chromium plated plane surmounting the globe  
\$750 - \$900

761 | A 19th century Japanese woodblock print  
| by Kunisada depicting a women and child beside a bridge  
under flowering cherry blossom trees. 340 x 230mm  
\$100 - \$200

761A | A 19th century Japanese sword  
| with engraved bone hilt and scabbard  
\$800 - \$1200

762 | A Nineteenth Century copper coal scuttle  
| and matching shovel.  
\$50 - \$100

763 | An Arts and Crafts brass teapot on stand. Absent  
| burner.  
\$100 - \$150

764 | A Nineteenth Century black basalt jug.  
| \$40 - \$80

765 | A Black lacquer Chinoiserie decorated box.  
| W. 110mm  
\$30 - \$50

766 | A Japanese 1950s Modern Toys moon rocket  
| complete with original box.  
\$100 - \$200

767 | A late Victorian pedestal vase  
| painted with a courting couple. The reverse panel  
painted with cottages. hH 250mm  
\$100 - \$200

768 | An African Dan tribal mask.  
| L.400mm  
\$400 - \$600

769 | A pair of carved African figures.  
H.470mm  
\$200 - \$300



761A

770 | A Japanese Meiji period scholar's box. w. 180mm  
| \$200 - \$300

776 | 19th century probate of Will document  
| hand written on velum  
\$30 - \$50

771 | A Japanese Meiji period tetsubin sake kettle.  
| \$100 - \$200

777 | A 19th century scrapbook  
| with numerous engravings and prints  
\$100 - \$200

772 | A Japanese Meiji period cast iron water pot with  
| captured ring handles. h. 200mm  
\$100 - \$200

778 | A teak document box. w.360mm  
| \$125 - \$175

773 | A Japanese Meiji period cast iron water pot  
| with captured ring handles. h. 140mm  
\$100 - \$200

779 | A Victorian mahogany writing box.  
| W.400mm  
\$175 - \$225

774 | Two Japanese stoneware sake bottles  
| with calligraphic inscriptions and an ovoid pottery  
stoneware storage vessel  
\$100 - \$200

780 | A sterling silver ink standish by Tiffany  
| with two oval wells with hinged covers raised on  
an oblong plinth with scroll feet  
\$800 - \$1200

775 | Ten assorted 18th century engravings  
| \$40 - \$80



780



# ART+OBJECT CONDITIONS OF SALE

NOTE IT IS ASSUMED THAT ALL BIDDERS AT AUCTION HAVE READ AND AGREED TO THE CONDITIONS DESCRIBED ON THIS PAGE. ART+OBJECT DIRECTORS ARE AVAILABLE DURING THE AUCTION VIEWING TO CLARIFY ANY QUESTIONS YOU MAY HAVE.

**1 REGISTRATION:** Only registered bidders may bid at auction. You are required to complete a bidding card or absentee bidding form prior to the auction giving your correct name, address and telephone contact + supplementary information such as email addresses that you may wish to supply to ART+OBJECT

**2 BIDDING:** The highest bidder will be the purchaser subject to the auctioneer accepting the winning bid and any vendor's reserve having been reached. The auctioneer has the right to refuse any bid. If this takes place or in the event of a dispute the auctioneer may call for bids at the previous lowest bid and proceed from this point. Bids advance at sums decreed by the auctioneer unless signaled otherwise by the auctioneer. No bids may be retracted. The auctioneer retains the right to bid on behalf of the vendor up to the reserve figure.

**3 RESERVE:** Lots are offered and sold subject to the vendor's reserve price being met.

**4 LOTS OFFERED AND SOLD AS DESCRIBED AND VIEWED:** ART+OBJECT makes all attempts to accurately describe and catalogue lots offered for sale. Notwithstanding this neither the vendor nor ART+OBJECT accepts any liability for errors of description or faults and imperfections whether described in writing or verbally. This applies to questions of authenticity and quality of the item. Buyers are deemed to have inspected the item thoroughly and proceed on their own judgment. The act of bidding is agreed by the buyer to be an indication that they are satisfied on all counts regarding condition and authenticity.

**5 BUYERS PREMIUM:** The purchaser by bidding acknowledges their acceptance of a buyers premium of 12.5% + Gst on the premium to be added to the hammer price in the event of a successful sale at auction.

**6 ART+OBJECT IS AN AGENT FOR A VENDOR:** A+O has the right to conduct the sale of an item on behalf of a vendor. This may include withdrawing an item from sale for any reason.

**7 PAYMENT:** Successful bidders are required to make full payment immediately post sale – being either the day of the sale or the following day. If for any reason payment is delayed then a 20% deposit is required immediately and the balance to 100% required within 3 working days of the sale date. Payment can be made by Eftpos, bank cheque or cash. Cheques must be cleared before items are available for collection. Credit cards are not accepted.

**8 FAILURE TO MAKE PAYMENT:** If a purchaser fails to make payment as outlined in point 7 above ART+OBJECT may without any advice to the purchaser exercise its right to: a) rescind or stop the sale, b) re offer the lot for sale to an underbidder or at auction. ART+OBJECT reserves the right to pursue the purchaser for any difference in sale proceeds if this course of action is chosen, c) to pursue legal remedy for breach of contract.

**9 COLLECTION OF GOODS:** Purchased items are to be removed from ART+OBJECT premises immediately after payment or clearance of cheques. Absentee bidders must make provision for the uplifting of purchased items (see instructions on the facing page)

**10 BIDDERS OBLIGATIONS:** The act of bidding means all bidders acknowledge that they are personally responsible for payment if they are the successful bidder. This includes all registered absentee or telephone bidders. Bidders acting as an agent for a third party must obtain written authority from ART+OBJECT and provide written instructions from any represented party and their express commitment to pay all funds relating to a successful bid by their nominated agent.

**11 BIDS UNDER RESERVE & HIGHEST SUBJECT BIDS:** When the highest bid is below the vendor's reserve this work may be announced by the auctioneer as sold 'subject to vendor's authority' or some similar phrase. The effect of this announcement is to signify that the highest bidder will be the purchaser at the bid price if the vendor accepts this price. If this highest bid is accepted then the purchaser has entered a contract to purchase the item at the bid price plus any relevant buyers premium.

## IMPORTANT ADVICE FOR BUYERS

THE FOLLOWING INFORMATION DOES NOT FORM PART OF THE CONDITIONS OF SALE, HOWEVER BUYERS, PARTICULARLY FIRST TIME BIDDERS ARE RECOMMENDED TO READ THESE NOTES.

**(A) BIDDING AT AUCTION:** Please ensure your instructions to the auctioneer are clear and easily understood. It is well to understand that during a busy sale with multiple bidders the auctioneer may not be able to see all bids at all times. It is recommended that you raise your bidding number clearly and without hesitation. If your bid is made in error or you have misunderstood the bidding level please advise the auctioneer immediately of your error – prior to the hammer falling. Please note that if you have made a bid and the hammer has fallen and you are the highest bidder you have entered a binding contract to purchase an item at the bid price. New bidders in particular are advised to make themselves known to the sale auctioneer who will assist you with any questions about the conduct of the auction.

**(B) ABSENTEE BIDDING:** ART+OBJECT welcomes absentee bids once the necessary authority has been completed and lodged with ART+OBJECT. A+O will do all it can to ensure bids are lodged on your behalf but accepts no liability for failure to carry out these bids. See the Absentee bidding form in this catalogue for information on lodging absentee bids. These are accepted up to 2 hours prior to the published auction commencement.

**(C) TELEPHONE BIDS:** The same conditions apply to telephone bids. It is highly preferable to bid over a landline as the vagaries of cellphone connections may result in disappointment. You will be telephoned prior to your indicated lot arising in the catalogue order. If the phone is engaged or connection impossible the sale will proceed without your bidding. At times during an auction the bidding can be frenetic so you need to be sure you give clear instructions to the person executing your bids. The auctioneer will endeavour to cater to the requirements of phone bidders but cannot wait for a phone bid so your prompt participation is requested.



# ABSENTEE BIDDING INSTRUCTIONS

Bidding No. Auction Nos 20 + 21 24 + 25 June 2008  
NEW COLLECTORS ART DEC ARTS THE NZ SALE

ART  
OBJECT  
THE 21<sup>ST</sup> CENTURY  
AUCTION HOUSE

This completed and signed form authorizes ART+OBJECT to bid on my behalf at the above mentioned auction for the following lots up to prices indicated below. These bids are to be executed at the lowest price levels possible.

I understand that if successful I will purchase the lot or lots at or below the prices listed on this form and the listed buyers premium for this sale (12.5%) and GST on the buyers premium. I warrant also that I have read and understood and agree to comply with the conditions of sale as printed in the catalogue.

Lot no.	Description	Bid max
_____	_____	_____
_____	_____	_____
_____	_____	_____
_____	_____	_____
_____	_____	_____
_____	_____	_____
_____	_____	_____

**PAYMENT AND DELIVERY** ART+OBJECT will advise me as soon as is practical that I am the successful bidder of the lot or lots described above. I agree to pay immediately on receipt of this advice. Payment will be by cash, cheque or bank transfer. I understand that cheques will need to be cleared before goods can be uplifted or dispatched. I will arrange for collection or dispatch of my purchases. If ART+OBJECT is instructed by me to arrange for packing and dispatch of goods I agree to pay any costs incurred by ART+OBJECT. Note: ART+OBJECT requests that these arrangements are made prior to the auction date to ensure prompt delivery processing.

Please indicate as appropriate by ticking the box: PHONE BID  ABSENTEE BID

MR/MRS/MS: \_\_\_\_\_ SURNAME: \_\_\_\_\_

POSTAL ADDRESS: \_\_\_\_\_

STREET ADDRESS: \_\_\_\_\_

BUSINESS PHONE: \_\_\_\_\_ MOBILE: \_\_\_\_\_

FAX: \_\_\_\_\_ EMAIL: \_\_\_\_\_

Signed as agreed: \_\_\_\_\_

To register for Absentee bidding this form must be lodged with ART+OBJECT prior to the published sale time in one of three ways:

1. Fax this completed form to ART+OBJECT +64 9 354 4645
2. Email a printed, signed and scanned form to: [info@artandobject.co.nz](mailto:info@artandobject.co.nz)
3. Post to ART+OBJECT, PO Box 68-345 Newton, Auckland 1145, New Zealand

ART+OBJECT 3 Abbey Street, Newton, Auckland, New Zealand. Telephone +64 9 354 4646, Freephone 0800 80 60 01

THE 21<sup>ST</sup> CENTURY AUCTION HOUSE

# ART + OBJECT



HAMISH CONEY  
Managing Director  
hamish@artandobject  
021 509 550



BEN PLUMBLY  
Director Art  
ben@artandobject.co.nz  
021 222 8183



JAMES PARKINSON  
Director Valuations  
james@artandobject.co.nz  
021 222 8184



ROSS MILLAR  
Director Objects  
ross@artandobject.co.nz  
021 222 8185



LEIGH MELVILLE  
Front of House Manager  
leigh@artandobject.co.nz  
09 354 4646



HELEN ANDREWS  
Front of House Manager  
helen@artandobject.co.nz  
09 354 4646



GEORGIE CAUGHEY  
Valuation Consultant  
09 354 4646

3 Abbey Street,  
Newton

PO Box 68 345,  
Newton  
Auckland 1145,  
New Zealand

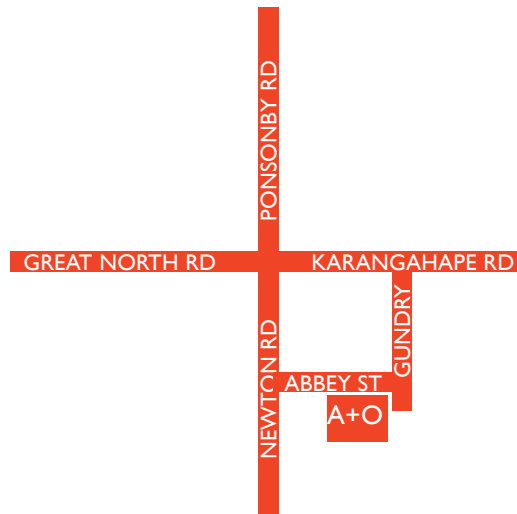
Telephone +64 9 354 4646

Freephone 0800 80 60 01

Facsimile +64 9 354 4645

info@artandobject.co.nz

www.artandobject.co.nz



## SUBSCRIBE

to the industry leading auction catalogues.

Complete with superb photography, insightful essays and news.

Over time these become an important archive of events, art and objects.

A subscription guarantees a minimum of six catalogues per annum delivered to your preferred address.



SUBSCRIPTION RATES INCLUDE GST + POSTAGE:

NEW ZEALAND \$100.00

AUSTRALIA \$160.00

REST OF THE WORLD (AIRMAIL FASTPOST) \$275.00

MR/MRS/MS: \_\_\_\_\_ SURNAME: \_\_\_\_\_

POSTAL ADDRESS: \_\_\_\_\_

STREET ADDRESS: \_\_\_\_\_

BUSINESS PHONE: \_\_\_\_\_ MOBILE: \_\_\_\_\_ FAX: \_\_\_\_\_

EMAIL ADDRESS: \_\_\_\_\_

Please find my CHEQUE enclosed  or charge my VISA  MASTERCARD

CARD NUMBER: \_\_\_\_\_ EXPIRY DATE: \_\_\_\_\_

Post with cheque to ART+OBJECT, PO Box 68-345 Newton, Auckland 1145, New Zealand.

Fax with credit card details to +64 9 354 4645. Download this form from [www.artandobject.co.nz](http://www.artandobject.co.nz)

ART+OBJECT 3 Abbey Street, Newton, Auckland, New Zealand. Telephone +64 9 354 4646, Freephone 0800 80 60 01

# New Collectors - Index of artists

Laurence Aberhart	100	Richard Killeen	125
Gretchen Albrecht	108, 130, 156, 157	Dennis Knight-Turner	47, 48, 49, 50, 51, 52
Rita Angus	103	Colin McCahon	38, 44
Artist Unknown (Photography)	94, 95	H.V. Millar	62, 63
Leo Bensemann	31, 71, 159	Andy Morley-Hall	98
John Bevan Ford	14	Roger Mortimer	4
Philippa Blair	45, 145, 158	John L Moore	175, 176, 177, 178, 179, 180, 181, 182, 183
Nigel Brown	16, 119	Guy Ngan	10
Matthew Browne	143, 164	NZ Tourist and Publicity	81, 82, 83, 84, 85, 86, 87, 88, 89, 90, 91, 92, 93
Dean Buchanan	41	Kate Northcott	165
Karel Burrows	110, 162	Stanley Palmer	34, 106
Gary Carsley	154	Fiona Pardington	96, 97
Marc Chagall	174	Patterson Parkin	70
Gavin Chilcott	24	Victor Passmore	56
Phil Clairmont	55, 77	J. D. Perrett	153, 155
Nobby Clark	29	Seraphine Pick	2, 3, 137
Peter Cleverley	18	John Pule	131, 132
Shane Cotton	139, 144	John Reynolds	8, 114, 127, 129, 169
Jacque Colley	167	Ross Ritchie	173
Gary Currin	40	Hadyn Rive	32, 171
Tony de Lautour	61, 79	James Robinson	1
Jenny Dolezel	67, 107, 141	Peter Robinson	170
Don Driver	76	James Ross	72
Dulot	33	Ian Scott	102
Simon Edwards	133, 134	Carole Shepherd	9
Robert Ellis	116, 149	Peter Siddell	118, 128
Clark Esplin	30, 68	Freda Simmonds	123
et al.	37	Michael Smither	17, 54
Tony Fomison	57	Olivia Spencer-Bower	13, 105
Luise Fong	136	Ron Stenberg	73
Patricia France	113	Terry Stringer	75
Heather Francis	27	Tracey Tawhio	46, 121
Jacqueline Fraser	5, 6	Alan Taylor	146, 160
Neil Frazer	117	Jeff Thompson	78, 79
Dick Frizzell	25, 39, 59, 60, 74, 168	Ray Thorburn	147
Rodney Fumpston	11	Gary Tricker	161
Kirsty Gorman	138	Michael Tuffery	19, 20
Lyn Hamilton	65	Geoff Tune	69
Bill Hammond	28, 66, 140	Jan van der Ploeg	64
Pat Hanly	7, 15, 58, 104	Ronnie van Hout	99, 115
Anne Hill	109	Gordon Walters	101, 120
Ralph Hotere	36, 126, 135	Denys Watkins	150
Alexis Hunter	142	Marilyn Webb	12, 26, 53, 166
Gavin Hurley	42	Mervyn Williams	122, 151
Noel Ivanoff	43	Agnes Wood	21, 22, 23
Ena B. Jeans	35	Norman Wooding	112, 163
Hamish Keith	124, 172	Jane Zusters	148





