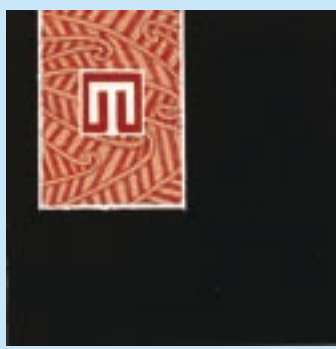
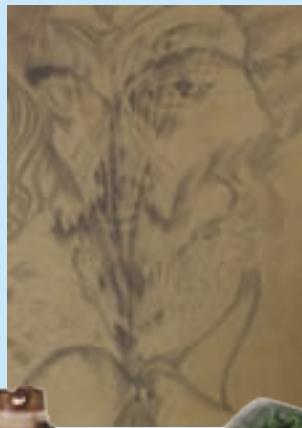


ART OBJECT

THE 21ST CENTURY
AUCTION HOUSE

NEW COLLECTORS ART
THE JIM DRUMMOND COLLECTION
THE NEW ZEALAND SALE
DECORATIVE ARTS





NEW COLLECTORS ART
wednesday 22 april 6.30pm

THE JIM DRUMMOND COLLECTION
saturday 2 may and sunday 3 may 10am
please turn to subtitle page for detailed session times

THE NEW ZEALAND SALE
+ DECORATIVE ARTS
thursday 14 may 6.30pm

RARE BOOKS
IN CONJUNCTION WITH PAM PLUMBLY
a separate catalogue will be available
thursday 14 may

conditions of sale	page 78
absentee bid form	page 79
contacts	page 80
buyer's premium on all auctions in this catalogue	15%

3 Abbey Street,
Newton
PO Box 68 345,
Newton
Auckland 1145,
New Zealand

Telephone +64 9 354 4646
Freephone 0800 80 60 01
Facsimile +64 9 354 4645
info@artandobject.co.nz
www.artandobject.co.nz

ENTRIES INVITED

TWENTIETH CENTURY DESIGN

JUNE 11TH 2009



GARTH CHESTER
CURVESSE CHAIR
\$3500 - \$4000



BOB ROUKEMA
WING BACK CHAIR
\$2000 - \$3000

CONTEMPORARY ART + OBJECTS

MAY 28TH 2009



LEN CASTLE
SLAB SIDED POT
\$1000 - \$2000

ANGELA SINGER
UNTITLED
\$1000 - \$1500 EACH

IMPORTANT PHOTOGRAPHS

MAY 28TH 2009



PETER PERYER
TROUT
vintage gelatin silver print, 1987
\$9000 - \$14 000

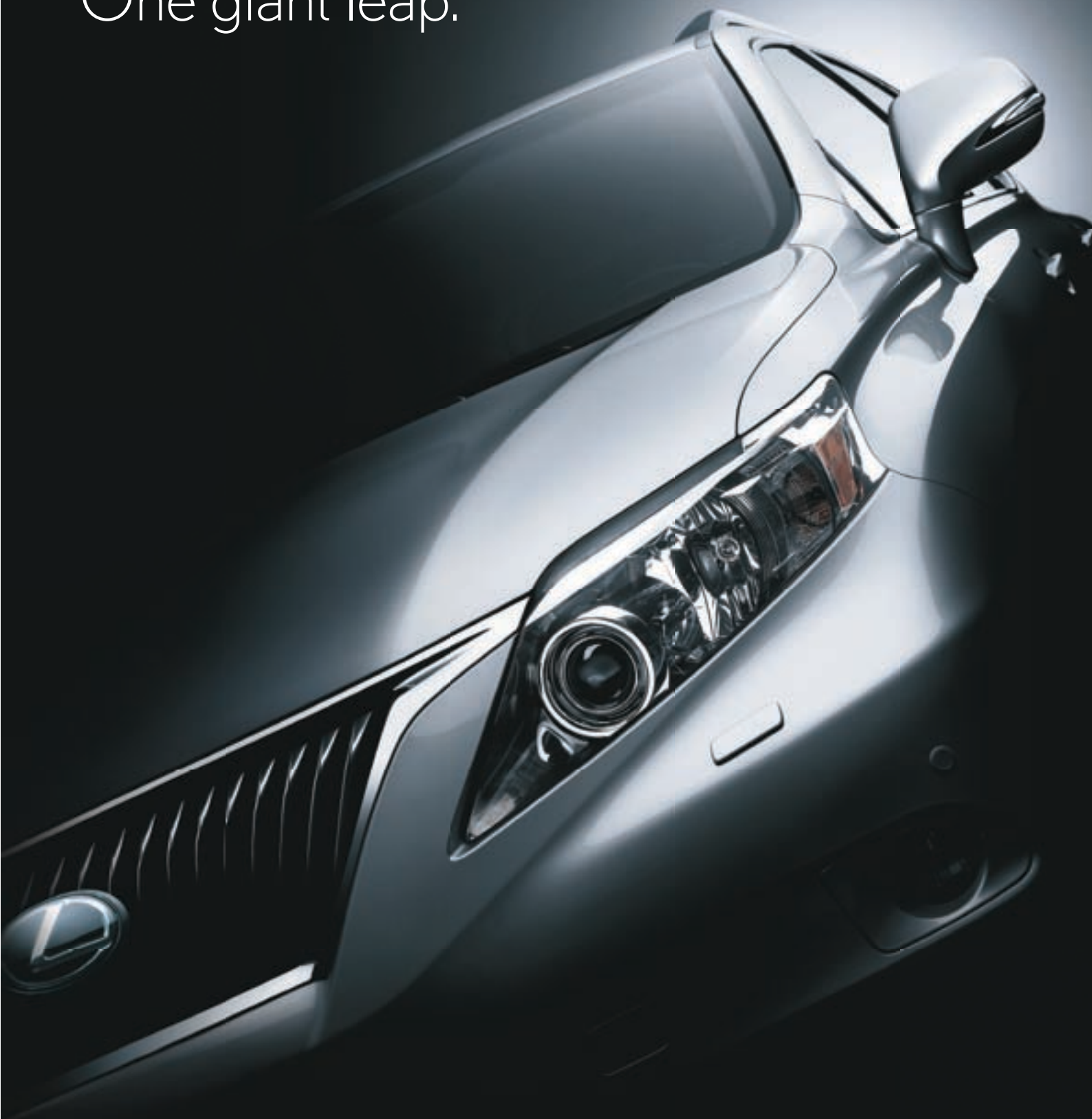
HANDPICKED AND UNIQUE
ITEMS FROM A MUSEUM
QUALITY COLLECTION

THE
JOHN PERRY
COLLECTION
JULY 2009

HISTORICAL AND CONTEMPORARY FINE ARTS AND
CERAMICS - MAORI AND PACIFIC ARTEFACTS - VINTAGE
PHOTOGRAPHY AND PRINTED MATTER - ORIENTAL ITEMS
- NATURAL HISTORY - FOLK ART AND CURIOSITIES

COLLECT LOCALLY
COLLECT GLOBALLY...

One giant leap.



The all-new, technologically advanced Lexus RX350 has arrived.

Why is the all-new RX350 such an excellent personification of forward thinking? Perhaps it's the way it innovatively blends the styling of an SUV with the luxury you've come to expect from Lexus. With a newly enhanced 3.5 litre engine and Active Torque Control All-Wheel Drive, you'll have outstanding power coupled with superb response and handling. A Vehicle Dynamics Integrated Management system and full airbag package are just some of the innovative safety features you'll find as standard inside. And, with a four year warranty and full maintenance service plan, even the after sales service is class-leading. The new RX350. It's one giant leap for motoring.



www.lexus.co.nz



NEW COLLECTORS ART

wednesday 22 april 6.30pm
3 abbey street, newton auckland

VIEWING

friday	17 april	9am – 5pm
saturday	18 april	11am – 4pm
sunday	19 april	11am – 4pm
monday	20 april	9am – 5pm
tuesday	21 april	9am – 5pm
wednesday	22 april	9am – 12noon

OF INTEREST...

the hone tuwhare collection	lots 1 - 12
the mike aamodt collection of photography	lots 65 - 87
a suite of shane cotton lithographs	lots 112 - 115
conditions of sale	page 78
absentee bid form	page 79
contacts	page 80
index of artists	back page



HONE

1 ADAIR BRUCE

HONE

linocut on recycled paper; a/p
title inscribed, signed and dated 10/86
400 x 305mm

\$200 - \$400

2 WALLACE CROSSMAN

WAERENGA IKA PA

pastel on paper
title inscribed, signed and dated '92
825 x 570mm

\$400 - \$700

3 JOHN FRANCIS

POPE PIUS

pastel on paper
title inscribed and signed with artist's initials J. F.; inscribed **FOR HONE TUWHARE FROM JOHN FRANCIS** verso a
280 x 195mm

\$200 - \$400

4 BARRY CLEAVIN

OF BIRDS, OF FEATHER, OF STONE OR
CROW
etching, 2/15

title inscribed, signed and dated 1993
520 x 375mm

\$300 - \$600

5 WALLACE CROSSMAN

UNTITLED - ABSTRACT

mixed media on paper
signed and dated '84
735 x 540mm

\$400 - \$700

6 RUDOLPH GOPAS

I RATHER LAY A LITTLE TART WITH JOY
AND ART
mixed media

title inscribed, signed and dated '76 and inscribed **(FOR THE MAORI PEOPLE) FOR MR HONE TUWHARE - THEIR FINEST SPEAKER R. G**
363 x 285mm

\$1000 - \$2000

7 MURRAY WEBB

STUDY OF HONE TUWHARE

graphite on paper with collage
signed
340 x 610mm

\$100 - \$300

TUWHARE



8 ANS WESTRA

NO. ONE (YOUTH ASPRAWL ON HORSE)

laminated black and white photograph

title inscribed and inscribed FOTO – SUPERB, BY ANS

WESTRA, ACE PHOTOGRAPHER TO HONE TUWHARE,

SENT JUNE 1996, AS THE FIRST IN A 'SERIES' OF THIRTY! NOTED, BY HONE TUWHARE 25/6/96 KAKA

POINT verso

307 x 360mm

\$300 - \$500



9 DINNAN

HONE AT THE BOIL UP POT, JIM MORIARTY'S KITCHEN, ISLAND BAY, WELLINGTON, AUGUST 8, 1989

black and white photograph

signed and dated '89 and inscribed HONE TUWHARE

445 x 320mm

\$200 - \$400



10 ANS WESTRA

UNTITLED – ON THE ROAD

vintage gelatin silver print

signed and inscribed by Ans Westra TO HONE WITH LOVE AND

RESPECT ANS; inscribed by Hone Tuwhare PHOTOGRAPH BY

ANS WESTRA OF COURSE, GIFT FOR HONE

303 x 382mm

\$2000 - \$3000

11 ANS WESTRA

TUWHARE AND GUITAR

vintage gelatin silver print, 1964

380 x 310mm

Illustrated: Janet Hunt, HONE TUWHARE: A BIOGRAPHY (Auckland, 1998), p. 70.

\$1500 - \$3000



12 KENNETH QUINN

PORTRAIT OF HONE

black and white photograph, 1986

artist's original letter to Hone affixed verso

405 x 305mm

\$300 - \$600



13 JOHN REYNOLDS

WHAT MATTERS IT

oil pastel on found screenprint on canvas

title inscribed; title inscribed, signed and dated 1998 verso

350 x 280mm

\$800 - \$1400



14 JOHN REYNOLDS

A PEBBLE AND A DIAMOND

oil pastel on found screenprint on canvas

title inscribed; title inscribed, signed and dated 1998 verso

350 x 280mm

\$800 - \$1400

15 TONY FOMISON

ONE MAN AND ONE WOMAN AFTER ANOTHER,

ANOTHER... (IN MEMORY OF PHIL CLAIRMONT)

lithograph, 1/12

title inscribed, signed and dated '86

360 x 305mm

\$1000 - \$2000

16 LUISE FONG

SILENT ORBIT (NUCLEUS)

mixed media

title inscribed, signed and dated 1996

510 x 405mm

\$2500 - \$3500



17 RICHARD KILLEEN

HARD HOUSE

screenprint and acrylic on rag paper

title inscribed, signed and dated Sep 26 1987

382 x 575mm

\$1500 - \$2500



18 NIGEL BROWN

'OPEN AIR' UREWERA SET NO. 5

lithograph, a/p II

title inscribed, signed and dated '88

610 x 805mm

\$1400 - \$2000

19 DICK FRIZZELL

WELCOME TO ESCAPE FROM SALVATION PT II

oil on paper

title inscribed, signed and dated '86 and inscribed CENTRE

GALLERY, JULY

755 x 562mm

\$2500 - \$4000

20 GRAHAME SYDNEY

THE ROAD TO LAUDER

lithograph, 16/50

title inscribed, signed and dated Feb 2007

530 x 625mm

\$1500 - \$2000

21 GRAHAME SYDNEY

JOANNA

lithograph, 40/50

title inscribed, signed and dated April 1997

520 x 715mm

\$1500 - \$2500





22 JOHN DRAWBRIDGE

SEA MIST
watercolour
signed and dated February 1987
565 x 750mm
\$1200 - \$2000

23 DARRYN GEORGE

MOKO NO. 6
oil on canvas on board
title inscribed, signed and dated 2006 verso
180 x 185mm
\$700 - \$900

24 DICK FRIZZELL

TWO PEOPLE TALKING
pastel on paper
title inscribed, signed and dated 22 - 7 - 84
158 x 115mm
\$2000 - \$3000



25 JOHN WEEKS

PORTRAIT
oil on board
signed
400 x 300mm
\$1200 - \$2000

26 MICHAEL SMITHER

UNTITLED - VIEW OF THE SOUTHERN ALPS
screenprint,
signed with artist's initials M. D. S and inscribed
2/95/76 - 157
570 x 525mm
\$600 - \$900



27 RALPH HOTERE

BLUE
lithograph, 19/24
title inscribed, signed and dated 1998
575 x 630mm
\$2500 - \$4000



28 JOHN WALSH

WE GO RIGHT HERE TONTO
lithograph, 55/75
title inscribed, signed and dated '05
490 x 795mm
\$800 - \$1400





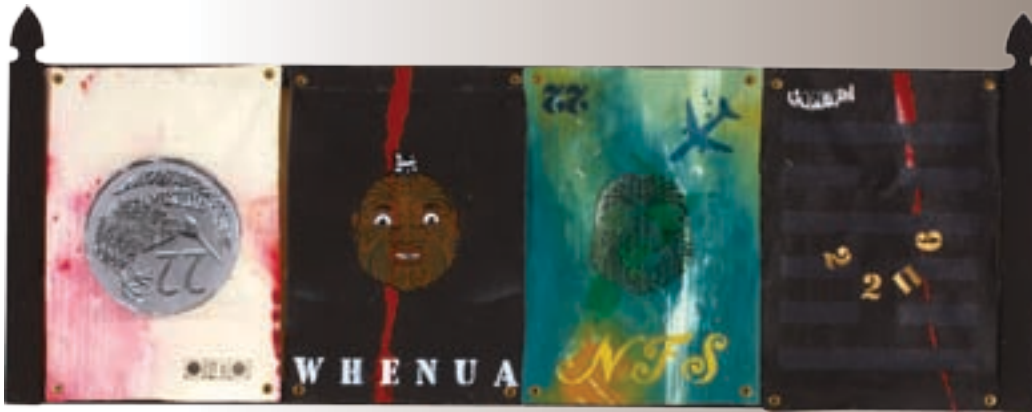
29 PAT HANLY
BOUQUET TO ALL WOMEN
 screenprint, 10/30
 signed and dated 7 – 9 – 92
 705 x 573mm
 \$2000 - \$3000

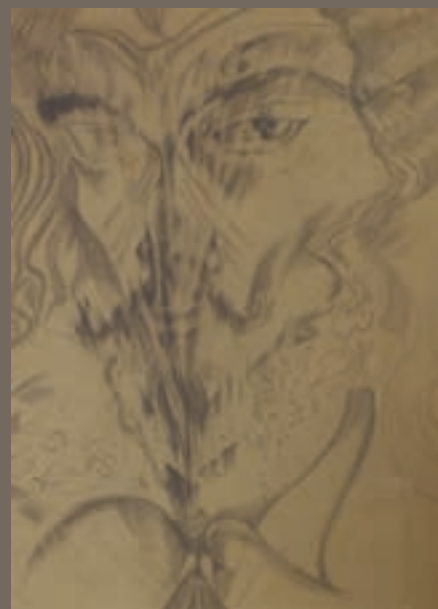
30 PETER MCINTYRE
THE MUSICIANS
 watercolour
 signed
 530 x 715mm
 \$1500 - \$2500

**31 MIKE WESTON
 AND OTIS FRIZZELL**
WHENUA N. F. S
 acrylic on canvas, four panels
 title inscribed; each panel signed verso
 600 x 1822mm
 \$1500 - \$2500

32 JACQUELINE FAHEY
THIS EXPANDING SHADOW OF DEATH
 oil on board
 title inscribed, signed and dated '88
 1200 x 1060mm
 \$5000 - \$8000

33 DON BINNEY
MOUNT DONALD MCLEAN – SEAWARD
 graphite on paper
 signed and dated 2002; title inscribed and signed verso
 415 x 590mm
 \$3000 - \$5000





34 PHILIP CLAIRMONT

BENEATH THE EXTERIOR

ink, watercolour and pastel on paper
title inscribed, signed and dated '69
500 x 325mm

\$2000 - \$3000

35 PHILIP CLAIRMONT

HEAD

ink, watercolour and pastel on paper
title inscribed, signed and dated July
500 x 325mm

\$2000 - \$3000

36 PHILIP CLAIRMONT

SELF PORTRAIT

graphite on paper
605 x 435mm

\$3000 - \$5000

37 RALPH HOTERE

BLACK RAINBOW

lithograph, a/p
title inscribed, signed and dated '86
and inscribed 20 - VIII - 86
570 x 370mm

\$5000 - \$7000

38 RALPH HOTERE

KEEP N. Z. OUT OF IRAQ

lithograph, 36/40
title inscribed, signed and dated '03
767 x 572mm

\$4500 - \$6500

39 KINGSLEY BAIRD

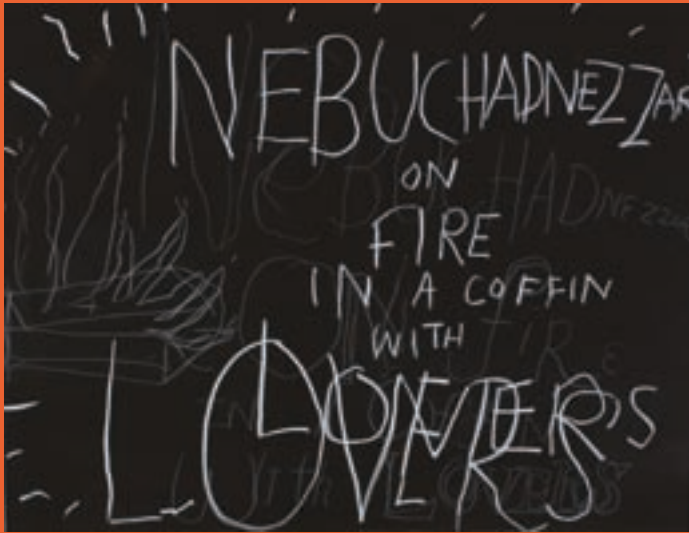
RUA KENANA

cast bronze, brass and wood, 1/3
signed and dated 1990 and inscribed

KOTAHİ TE TURE, NGA IWI E RUA, MAUNGAPOHATU
375 x 348 x 65mm

\$2500 - \$4000





40 JOHN REYNOLDS

NEBUCHADNEZZAR ON FIRE IN A COFFIN WITH LOVERS
 acrylic and oilstick on paper
 title inscribed, signed and dated 1987
 490 x 637mm
 \$2000 - \$3000



41 TRACEY TAWHIAO

UNTITLED
 oil paint marker on canvas, 5 panels
 signed and dated 2006 verso
 1220 x 1600mm approx.
 \$3000 - \$5000



42 ALLEN MADDOX

UNTITLED - CROSS
 oil on canvas
 signed with artist's initials A. M.
 and dated '95 verso
 610 x 610mm
 \$5000 - \$8000



43 GRETCHEN ALBRECHT

STUDY FOR PAINTING (PASTORAL)
 watercolour
 title inscribed, signed and dated '83
 560 x 760mm
 \$2500 - \$4000



44 JUDE RAE

DETAIL IX
 oil on linen
 title inscribed, signed and dated June 1996
 405 x 380mm
 \$1500 - \$2500



45 JAMES COOK

WINTER SUNSHINE, VERONA
 watercolour
 signed
 300 x 340mm
 \$1000 - \$2000



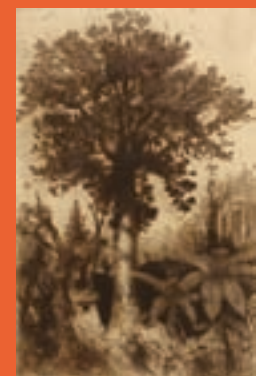
46 JOANNA MARGARET PAUL
INTERIOR SCENE
 watercolour
 inscribed verso (illegible)
 200 x 320mm
 \$300 - \$600



47 TONY LANE
FOUR FIGURES
 oil on jute on board
 artist's name, title and date (Jan 1980) inscribed verso
 345 x 390mm
 \$300 - \$500



48 LILY LAITA
KUIRI MORNING HAS BROKEN
 acrylic on found wicker tray
 title inscribed and signed on label affixed verso
 470 x 130 x 78mm
 \$300 - \$500



49 TREVOR LLOYD
HIS MAJESTY THE KAURI
 etching
 title inscribed and signed
 353 x 235mm
 \$500 - \$800

50 MARCUS KING
UNTITLED - RIVER VIEW
 oil on board
 signed and dated '75
 340 x 420mm
 \$800 - \$1200

51 JAMES COOK
THE BACKYARD SHOP
 oil on board
 signed; title inscribed verso
 200 x 265mm
 \$700 - \$1000

52 MELVIN DAY
STILL LIFE WITH FOUR PEARS
 ink, pastel and watercolour on paper
 signed
 320 x 403mm
 \$800 - \$1200

53 PETER SIDDELL
WINDOW
 screenprint, 84/150
 title inscribed, signed and dated 1982
 560 x 760mm
 \$600 - \$900

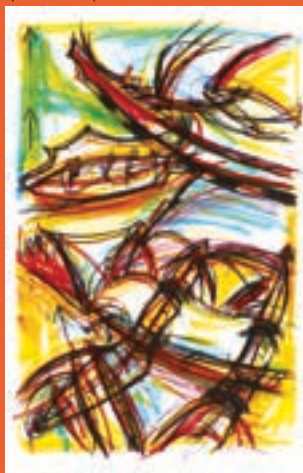


54 DICK FRIZZELL
THE ROBBERS
 lithographs, 65/115 AND 111/115
 signed and dated 6/12/90
 198 x 275mm
 \$300 - \$600

55 NORMAN WOODING
SILVERDALE HIGHWAY
 oil on board
 signed; title inscribed and signed verso
 675 x 1020mm
 \$1000 - \$2000



56 PHILLIPA BLAIR
UNTITLED - ABSTRACT
 pastel on paper
 780 x 520mm
 \$400 - \$700



57 TERRY STRINGER

DOMESTIC STILL LIFE

cast bronze with hand crafted leadlight glass shade by Ken Cooke
signed and dated '82 and inscribed 1/5
470 x 250 x 210mm

\$4000 - \$6000



58 PAUL DIBBLE

UNTITLED- KIWI

cast bronze
signed and dated 2001
352 x 122 x 300mm

\$6000 - \$9000



59 ROY GOOD

TRIANGLE SUITE NO. 4

acrylic on canvas
title inscribed, signed and dated 1972 verso
1530 x 1530mm
Exhibited: Barry Lett Galleries, 1973

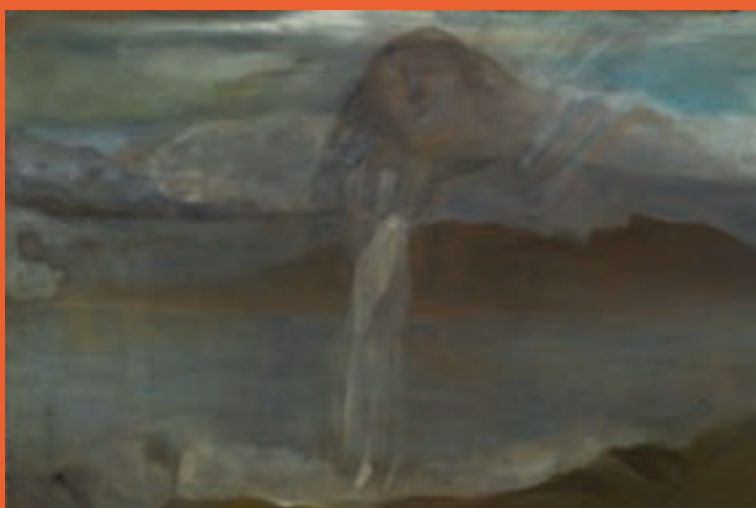
\$5000 - \$8000

60 STAR GOSSAGE

HAUTURU 1

oil on canvas
signed verso
510 x 765mm
Provenance: Private collection, Wellington

\$6500 - \$8500





61 EUAN MACLEOD

PASSING (B.S.)

oil on canvas

inscribed **R.I.P B.S.**; title inscribed and signed verso

512 x 380mm

\$1800 - \$2800



62 DONNA DEMENTE

FLUTTER

acrylic on cotton and calico

title inscribed, signed and dated '06 verso

600 x 500mm

\$3000 - \$5000



63 JEFFREY HARRIS

BY DEFINITION

sugar lift aquatint, 13/18

title inscribed, signed and dated 1988

690 x 970mm

\$1500 - \$2500



64 JOHN REYNOLDS

STUDY FOR THE USELESS PURSUIT OF SHADOWS

oil paint marker and acrylic on canvas

title inscribed, signed and dated 2003 verso

600 x 450mm

\$3500 - \$5000

**65 ANS WESTRA****TURANGAWAEWAE MARAE, NGARUAWAHIA**

gelatin silver print, 1976
signed with artist's initials A.W

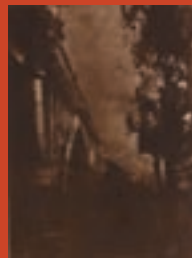
275 X 270mm

\$2500 - \$4000

66 J. W CHAPMAN-TAYLOR**GRAFTON BRIDGE**

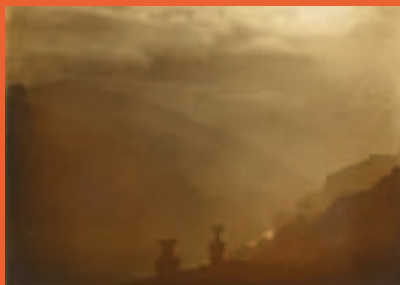
photogravure
title inscribed and signed
177 x 140mm

\$400 - \$600

**67 JAMES BRAGGE****JOHN MARTIN'S FOUNTAIN, CORNER
FEATHERSTON STREET AND LAMBTON QUAY**

gelatin silver print (posthumous)
title inscribed on label affixed verso
280 x 350mm

\$250 - \$350

**68 J. W CHAPMAN-TAYLOR****MT. TINAKORI**

gelatin silver print
title inscribed and signed
150 x 202mm

\$300 - \$500

**69 R. J SEARLE****THE SKETCHERS, CANTERBURY MUSEUM**

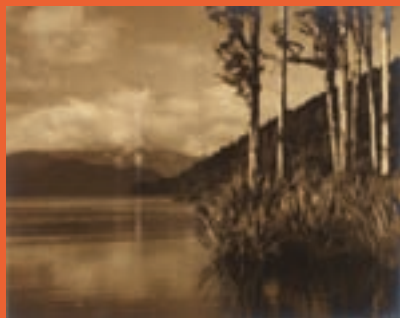
gelatin silver print
title inscribed and signed
197 x 245mm

\$200 - \$400

**70 GEORGE CHANCE****ARATIATIA RAPIDS - NEAR TAUPO**

gelatin silver print exposed through a textured screen
title inscribed and signed; original George Chance Camera Study
label affixed verso
225 x 275mm

\$400 - \$600

**71 GEORGE CHANCE****MORNING REFLECTIONS - LAKE KANIERI**

gelatin silver print exposed through a textured screen
title inscribed and signed; original George Chance Camera Study
label affixed verso

225 x 275mm

\$400 - \$600

**72 GEORGE CHANCE****PASTURE - WANAKA**

gelatin silver print exposed through a textured screen
title inscribed and signed; original George Chance Camera Study
label affixed verso
225 x 275mm

\$300 - \$500

**73 GEORGE CHANCE****POHUTUKAWA TREES - BAY OF PLENTY**

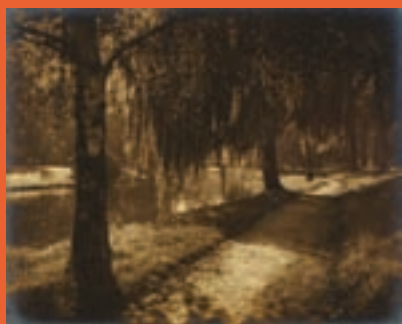
gelatin silver print exposed through a textured screen
title inscribed and signed; original George Chance Camera Study
label affixed verso
225 x 275mm

\$300 - \$500

**74 GEORGE CHANCE****THE HARBOUR, OTAGO**

gelatin silver print exposed through a textured screen
title inscribed and signed; original George Chance Camera Study
label affixed verso
228 x 270mm

\$300 - \$500

**75 GEORGE CHANCE****SPRING MORNING - AVON, CHRISTCHURCH**

gelatin silver print exposed through a textured screen
title inscribed and signed; original George Chance Camera Study
label affixed verso
223 x 270mm

\$250 - \$350

**76 GEORGE CHANCE****CANTERBURY COLLEGE – CLOISTERS**

gelatin silver print
title inscribed and signed; original George Chance Camera Study
label affixed verso
180 x 220mm

\$250 - \$350

**77 GEORGE CHANCE****CANTERBURY COLLEGE**

gelatin silver print
title inscribed and signed; original George Chance Camera Study
label affixed verso
173 x 223mm

\$300 - \$500

**78 GEORGE CHANCE****AUTUMN DAY – SOUTH CANTERBURY**

gelatin silver print exposed through a textured screen
title inscribed and signed; original George Chance Camera Study
label affixed verso
195 x 245mm

\$300 - \$500

**79 GEORGE CHANCE****AUTUMN – SOUTH CANTERBURY**

gelatin silver print exposed through a textured screen
title inscribed and signed; original George Chance Camera Study
label affixed verso
255 x 275mm

\$300 - \$500

**80 GEORGE CHANCE****LAKE WAKATIPU FROM QUEENSTOWN**

gelatin silver print exposed through a textured screen
title inscribed and signed; original George Chance Camera Study
label affixed verso
225 x 275mm

\$300 - \$500

81 GEORGE CHANCE**UNIVERSITY OF OTAGO**

gelatin silver print exposed through a textured screen
title inscribed and signed; original George Chance Camera Study
label affixed verso
195 x 220mm

\$300 - \$500

**82 GEORGE CHANCE****LAKE TE ANAU**

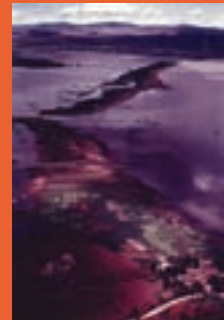
gelatin silver print exposed through a textured screen
title inscribed and signed; original George Chance Camera Study
label affixed verso
228 x 270mm

\$400 - \$600

**83 GEORGE CHANCE****A COLLEGE IN ESSEX**

gelatin silver print exposed through a textured screen
title inscribed and signed; original George Chance Camera Study
label affixed verso
280 x 225mm

\$200 - \$300

**84 BRIAN BRAKE****LAKE DIAN CHI, KUNMING PHOTOGRAPHED FROM THE SLOPES OF THE XI'SHAN (WESTERN MOUNTAINS)**

colour photograph
signed; title printed and dated 1957 on artist's original catalogue
label affixed verso
430 x 295mm

\$1000 - \$2000

**85 SHARYN BLACK****WOMAN I**

gelatin silver print, 3/5
title inscribed, signed and dated August 1977 verso
201 x 253mm

\$200 - \$300

**86 SHARYN BLACK****DEVONPORT FERRY**

gelatin silver print
title inscribed, signed and dated 1979 verso
238 x 303mm

\$200 - \$300

**87 SHARYN BLACK****FACE IT**

gelatin silver print
title inscribed, signed and dated 1977 and inscribed "Face It" Exhibition, Dowse Art Gallery verso
245 x 303mm

\$200 - \$300



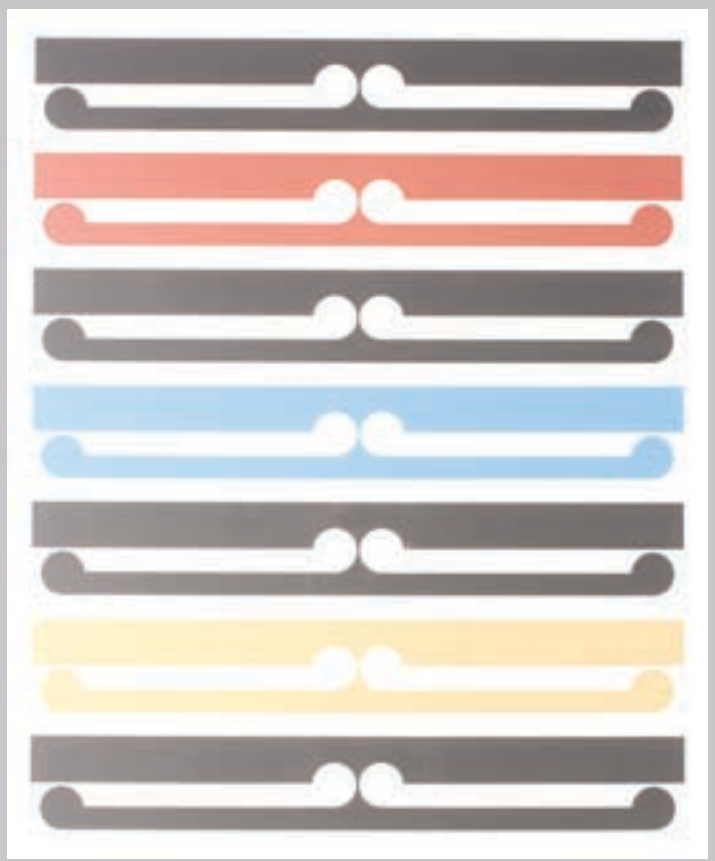
88 PATRICK HAYMAN
AMOROUS EVENING BY THE SHORE
 acrylic, watercolour and pastel on paper
 signed; title inscribed, signed and dated 1978 verso
 220 x 280mm
 \$1500 - \$2500



89 JEFFREY HARRIS
UNTITLED - THE DISCUSSION
 graphite on paper
 signed
 210 x 290mm
 \$1400 - \$2000



90 GORDON WALTERS
MAHO
 screenprint, 46/50
 title inscribed and signed
 370 x 220mm
 \$4000 - \$6000



91 GORDON WALTERS
KURA
 screenprint, 69/150
 title inscribed, signed and dated 1982
 760 x 570mm
 \$6000 - \$8000



92 PAT HANLY
VACATION
 screenprint, 9/37
 title inscribed, signed and dated 1986
 520 x 680mm
 \$3500 - \$5000



93 JOHN PULE
NUKULAFALABA
 lithograph, 29/30
 title inscribed, signed and dated '94
 755 x 755mm
 \$2000 - \$3000



94 MICHAEL SMITHER
UNTITLED - COASTAL VIEW
 screenprint, 18/39
 signed with artist's initials M. D. S and dated '81
 465 x 560mm
 \$200 - \$400



95 TOSS WOOLLASTON
A VIEW OF AUCKLAND FROM MOUNT EDEN
 pen and ink on paper
 signed and inscribed c/ M. E GRANT, 2A WATERVIEW RD
DEVONPORT
 205 x 293mm
 \$2000 - \$3000



96 HELEN STEWART
STILL LIFE WITH BRUSH POT
 oil on canvas
 signed; original catalogue label affixed verso
 400 x 430mm
 \$2500 - \$4000



97 GRETCHEN ALBRECHT
CHANGES/RADIANCE
 lithograph, 17/20
 title inscribed, signed and dated '84
 580 x 755mm
 \$1200 - \$1800

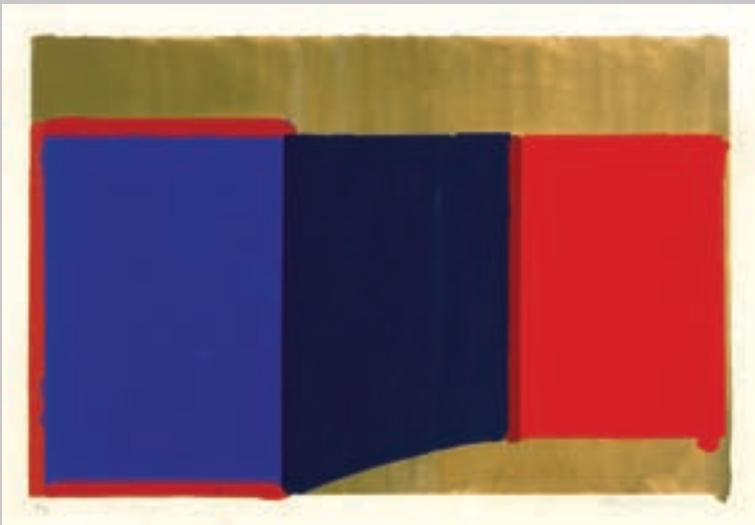


98 GRETCHEN ALBRECHT
CHANGES/SPAN
 lithograph, 17/20
 title inscribed, signed and dated '84
 580 x 755mm
 \$1200 - \$1800

99 JOHN HOYLAND (BRITISH, B. 1934)
REDS, BLUES
 screenprint, 22/75
 signed and dated '69
 690 x 1000mm
 \$600 - \$900

100 MICHAEL SMITHER
UNTITLED - LANDSCAPE
 watercolour
 signed with artist's initials M. D. S and dated '69
 550 x 760mm
 \$2500 - \$4000

101 ROHAN WEALLEANS
SEA CREATURES
 household paint and pins on board, title inscribed,
 signed
 and dated 2001 verso,
 1240 x 650 x 140mm
 \$6000 - \$8000





102 ROBERT ELLIS
RAKAUMANGAMANGA
 mixed media and collage on paper
 title inscribed, signed and dated 20 Oketopa 1986,
 1065 x 740mm
 \$4000 - \$6000



103 ROBYN KAHUKIWA
UNTITLED
 acrylic on linen
 signed and dated 1997,
 1070 x 1500mm
 \$6000 - \$9000

104 STANLEY PALMER
NIKAU - KARAMEA
 monotype
 title inscribed, signed and dated 1994,
 582 x 1335mm
 \$2000 - \$3000





105 J. C VEITCH
SOUTH ISLAND LAKE SCENE
 oil on board
 signed
 232 x 385mm
 Provenance: from the collection of the current owner's mother
 who lived with the artist in Owaka in the 1920s
\$300 - \$600

105A J. C VEITCH
MOUNT TARANAKI WITH CAMP SITE IN FOREGROUND
 oil on board
 Provenance: as above, signed
 232 x 385mm
\$300 - \$600

106 J. C VEITCH
A VIEW OF MOUNT COOK FROM LAKE MATHESON
 oil on board
 Provenance: as above, signed
 232 x 385mm
\$300 - \$600

107 J. C VEITCH
FLORAL STILL LIFE
 oil on board
 Provenance: as above, signed
 232 x 385mm
\$500 - \$800

108 AGNES WOOD
LUGGAGE 1 "SOUTH"
 watercolour
 title inscribed, signed and dated Mar '85 verso
 135 x 170mm
\$200 - \$300

109 AGNES WOOD
LUGGAGE 11 "SOUTH"
 watercolour
 title inscribed, signed and dated Mar '85 verso
 135 x 170mm
\$200 - \$300

110 AGNES WOOD
MOUNTS COOK AND SEFTON "SOUTH"
 watercolour
 title inscribed, signed and dated Mar '85 verso
 135 x 170mm
\$200 - \$300

111 GRAHAM CORNWELL
THE BLACK CAT
 lithograph, 6/13
 signed and dated 83
 420 x 570mm
\$100 - \$200



112 SHANE COTTON

FIAT LUX

screenprint, 21/25

title inscribed, signed and dated 1998

335 x 450mm

\$2500 - \$4000

113 SHANE COTTON

PRAYER TIKI

screenprint, 22/25

title inscribed, signed and dated 1997

525 x 755mm

\$3000 - \$4000

114 SHANE COTTON

HIA

screenprint, 22/25

title inscribed, signed and dated 1997

525 x 755mm

\$3000 - \$4000

115 SHANE COTTON

MIDDLE NORTH

screenprint, 22/25

title inscribed, signed and dated 1997

525 x 755mm

\$3000 - \$4000



116 RICHARD KILLEEN

PRIMITIVES

acrylic on paper

title inscribed, signed and dated 30 - 8 - 80

570 x 385mm

\$4000 - \$6000

117 RICHARD KILLEEN

SEVEN DOGS

acrylic on paper

title inscribed, signed and dated 01 - 07 - 79

560 x 380mm

\$4000 - \$6000

118 RICHARD KILLEEN

UNTITLED - INSECTS AND TRIANGLES

acrylic on paper

signed and dated 7 - 2 - 80

570 x 385mm

\$4000 - \$6000

119 CHARLES MCPHEE

NANI

oil on velvet
title inscribed and signed
910 x 670mm
\$2000 - \$3000



120 RALPH HOTERE

A BLACK UNION JACK?

lithograph
title inscribed, signed and dated '95
402 x 325mm
\$4500 - \$6500

121 PAT HANLY

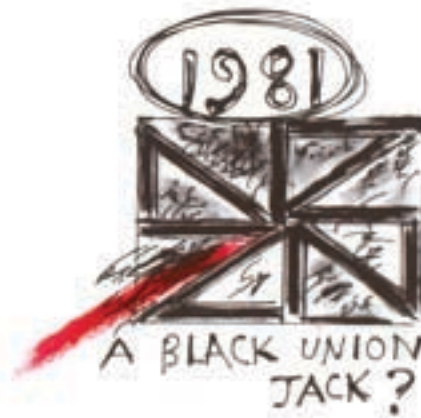
NEW AGE WOMAN

screenprint, 10/31
title inscribed, signed and dated '88
730 x 595mm
\$4500 - \$6500

122 MICHAEL SMITHER

ROCKS REVISITED

acrylic and gouache on paper
signed with artist's initials M. D. S and
dated '75; title inscribed, signed and dated
on original label affixed verso
425 x 425mm
\$1400 - \$2200





123 LAURENCE ABERHART

KEVIN WASLEY'S ELVIS PRESLEY MEMORIAL RECORD ROOM, HAWERA, 14 MAY 1986

gelatin silver print

Exhibited: 'Aberhart', City Gallery, Wellington, 13 May – 29 July, 2007 (touring)

Illustrated: Gregory O'Brien and Justin Paton, **ABERHART** (Victoria University Press, 2007), plate. 141.

Provenance: Private Collection, lower North Island.

250 x 302mm

\$3000 - \$5000

124 LAURENCE ABERHART

SELMA, ALABAMA, 15 SEPTEMBER 1988

gelatin silver print

title inscribed, signed and dated 1998/1990

Exhibited: 'Aberhart', City Gallery, Wellington, 13 May – 29 July, 2007 (touring)

Illustrated: Gregory O'Brien and Justin Paton, **ABERHART** (Victoria University Press, 2007), plate. 74.

Provenance: Private Collection, lower North Island.

240 x 302mm

\$3000 - \$5000

125 CHRISTOPHER AUBREY

WHATIPU

watercolour

signed and dated 1900

245 x 518mm

\$4500 - \$6500

126 CHRIS BRYANT

A CHIEFTAIN, A NAVIGATOR, A PRIEST

acrylic on wood, diptych

title inscribed, signed and dated June 1994 verso

1305 x 150mm each panel

\$1000 - \$2000



127 ANDY WARHOL

CAMPBELL'S SOUP

a complete set of 10 Sunday B. Morning screenprints

each print stamped SUNDAY B. MORNING

and FILL IN YOUR OWN SIGNATURE verso;

890 x 585mm each

\$12 000 - \$16 000



128 PHILIP CLAIRMONT
LARGE STILL LIFE WITH OBJECTS
 linocut, 7/15
 title inscribed, signed and dated 1980
 1005 x 782mm
 \$4000 - \$6000



129 RALPH HOTERE
BLACK
 lithograph, 3/20
 title inscribed, signed and dated '97
 760 x 568mm
 \$6000 - \$9000



130 MAX GIMBLETT
UNTITLED
 acrylic and graphite on paper
 signed and dated '78 and
 inscribed to Milton and Helen from Max
 565 x 790mm
 \$3000 - \$5000



131 RICHARD MCWHANNELL
WILDERNESS COUPLE
 oil on linen
 title inscribed, signed and dated 1993 verso
 460 x 560mm
 \$7000 - \$10 000



132 ALLEN MADDOX

ROLE OVER IN THE CLOVER

acrylic on paper; diptych

title inscribed, signed with artist's initials A. M and dated 6. 94

762 x 1135mm

\$5000 - \$7000

133 KARL MAUGHAN

DOMAIN DRIVE

screenprint on rag paper; 21/25

title inscribed and signed

1235 x 1172mm

\$2500 - \$4000

134 BOB ELLIS

PIA TAKA RAKAUMANGAMANGA

mixed media on paper

title inscribed, signed and dated 1990

1015 x 655mm

\$4000 - \$6000

135 SANDY ADSETT

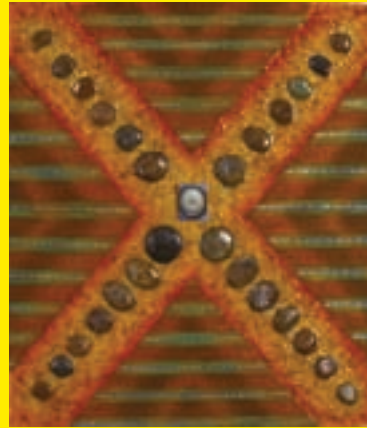
FROM THE HE WHARE SERIES

acrylic on board

title inscribed, signed and dated '86 verso

1200 x 890mm

\$3000 - \$5000



136 EILEEN MAYO
GENTLY FLOATING FORMS

screenprint, 13/40
title inscribed and signed
550 x 345mm
\$1500 - \$2000

137 EILEEN MAYO
GENESIS

woodblock, 4/20
title inscribed and signed
425 x 280mm
\$1500 - \$2000

138 NID MOON
ANCIENT LAMENT 11

oil, pebbles, resin and photograph on board
title inscribed, signed and dated 1999 verso
1040 x 902mm
\$500 - \$900

139 TED DUTCH
TWO HORSEMEN AND WALKING COMPUTER

screenprint, 1/16
title inscribed, signed and dated 1970
385 x 530mm
\$700 - \$1000

140 TED DUTCH
GREY CAT II

screenprint, 5/30
title inscribed, signed and dated 1997
350 x 260mm
\$250 - \$400

141 5 VARIOUS EXHIBITION POSTERS

\$100 - \$300

142 BEAUTIFUL INSIDE MY HEAD FOREVER

the Sotheby's Damien Hirst complete 3 volume
boxed catalogue, 2008
330 x 235 x 60mm
\$60 - \$100

143 DUNEDIN PUBLIC ART GALLERY
RALPH HOTERE: A SURVEY 1963 - 1973

exhibition catalogue, 1974
210 x 235mm
\$40 - \$80

144 TWO BOXES OF ASSORTED
CATALOGUES

Dunbar Sloane, Webb's and Gow Langsford
\$200 - \$400

145 WAIKATO ART GALLERY
BULLETIN, NO. 4

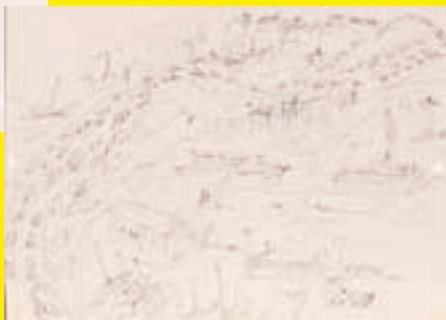
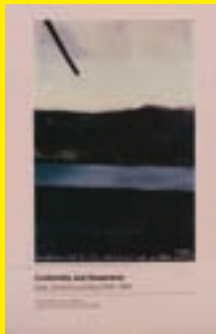
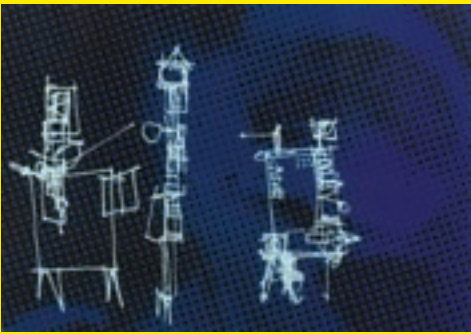
RALPH HOTERE
catalogue produced to mark the Occasion of Hotere
completing the Founder's Theatre Mural in Hamilton in 1973
275 x 196mm
\$100 - \$200

146 RALPH HOTERE AND BILL MANHIRE
MALADY

limited edition catalogue of 150 published by Amphedasma Press,
Dunedin in 1970
signed by both Hotere and Manhire on the plate
and inscribed 9/50
255 x 203mm
Note: only the first 50 copies were editioned and signed
\$100 - \$200

147 JOHN PULE
FIVE WORKING DRAWINGS FOR

LIVING IN AUCKLAN' BY MICHAEL O'LEARY
ink on 5 sheets of paper with original frontispiece
frontispiece signed by Michael O'Leary;
inscribed variously in the artist's hand
296 x 209mm each
\$1000 - \$2000



148 COLIN MCCAHERN

15 DRAWINGS
lithographic reproductions, 23 leaves published by the Hocken Library, 1976
273 x 206mm
\$1000 - \$2000

149 A QUANTITY OF ART NEW ZEALAND
MAGAZINES IN VERY GOOD CONDITION.

Nos. 1 - 7, 10 - 11, 13 - 14, 16 - 33, 36 - 37, 39 - 45, 47 - 50, 52 - 56, 59, 62,
65, 75, 84, 93
\$600 - \$900

136-149





150 MERVYN WILLIAMS

'MYTH' (GOLD)

acrylic on canvas

title inscribed, signed and dated '92

565 x 790mm

\$3500 - \$5000



151 CHRISTINE WEBSTER

BLACK CARNIVAL

unique cibachrome photograph

title inscribed, signed and dated 5/12/93 verso

2710 x 1050mm

\$2000 - \$3000



152 JOHN PULE

UNTITLED

lithograph, 6/8

signed

970 x 692mm

\$1400 - \$2000

153 MICHEL TUFFERY

TAMA TUSI TUSI

woodcut on fibre paper, 1/10

title inscribed, signed and dated '94

1297 x 313mm

\$800 - \$1400

154 BASIL HONOUR

ENTRANCE TO A LAKE

oil on canvas

signed and dated '65

435 x 540mm

\$1000 - \$2000



155 PARATENE MATCHITT

SLEEP

monoprint

artist's name and title inscribed and inscribed

purchased at Barry Lett Galleries, Upper Queen Street,

circa. 1964

545 x 740mm

\$1000 - \$2000





156 GRETCHEN ALBRECHT

CORAL REEF

lithograph, 1/30

title inscribed, signed and dated 2000

440 x 585mm

\$1800 - \$3000

157 BRIT BUNKLEY

FLEECE BLACKOUT

lamda print

745 x 1003mm

\$1000 - \$2000

158 JOHN REYNOLDS

UNTITLED - ABSTRACT

oilstick and pastel on paper

signed with artist's initials J. R and dated '86

500 x 645mm

\$2000 - \$3000

159 ALLEN MADDOX

UNTITLED - GRID

ink and watercolour on paper

signed with artist's initials A. M and dated 6.99

205 x 295mm

\$1500 - \$2500

160 SHANE COTTON

VEIL

lithograph, 28/40

title inscribed, signed and dated 2004

575 x 760mm

\$1800 - \$2800



161 PETER ROBINSON

FAILED WORK NO. 1

acrylic and oilstick on card
title inscribed, signed and dated 2002
1350 x 1000mm

\$10 000 - \$15 000



162 RALPH HOTERE
ROUND MIDNIGHT 'OCTOBER'
 lithograph, 21/24
 title inscribed, signed and dated 2000
 570 x 755mm
 \$4500 - \$6500



163 ALLEN MADDOX
UNTITLED
 acrylic on paper
 signed with artist's initials A. M and dated 25. 1. 89
 420 x 293mm
 \$1000 - \$2000



164 DON DRIVER
POSTER FOR TOOLS AND OTHERS,
DOWSE ART GALLERY EXHIBITION
 mixed media
 585 x 445mm
 \$400 - \$600



165 PAMELA WOLFE
ANNA AND LUKE
 oil on board
 signed and dated 85; title inscribed, signed and dated verso
 1150 x 930mm
 \$1000 - \$2000



166 ROBERT MCLEOD
SHIELDED
 oil on canvas
 title inscribed, signed and dated 8 June '81 verso
 1070 x 342mm
 \$500 - \$800



167 CLAUDIA POND-EYLEY

UNTITLED - STILL LIFE

oil on board
signed and dated 1982
1185 x 1185mm
\$2000 - \$3000



168 PHILLIPA BLAIR

CALLIGRAPH

screenprint, 4/20
title inscribed, signed and dated 1981
580 x 605mm
\$500 - \$800



169 VERA CUMMINGS

GUIDE SOPHIA

oil on canvas
signed
293 x 240mm
\$4000 - \$6000



170 GEORGE CHANCE

THE WHITE BOAT

gelatin silver print exposed through a textured screen
title inscribed and signed
262 x 207mm
\$200 - \$300



171 WHITES AVIATION

QUEENSTOWN

hand coloured photograph
title inscribed and signed
745 x 1210mm
\$200 - \$400



172 WONG SING TAI

BARE ISLAND

screenprint, 30/100
title inscribed, signed and dated 1980
650 x 1000mm
\$250 - \$400



173 WONG SING TAI
TEMPLE OF APOLLO
 screenprint, 3/100
 title inscribed, signed and dated '79
 520 x 580mm
 \$300 - \$600



174 MARY LOUISE BROWNE
THREE STUDIES
 graphite and pastel on graph paper
 signed and dated '82
 500 x 750mm
 \$400 - \$600



175 MICHAEL SMITHER
MT TARANAKI
 screenprint
 signed with artist's initials M. D. S and dated '72
 182 x 182mm
 \$500 - \$700



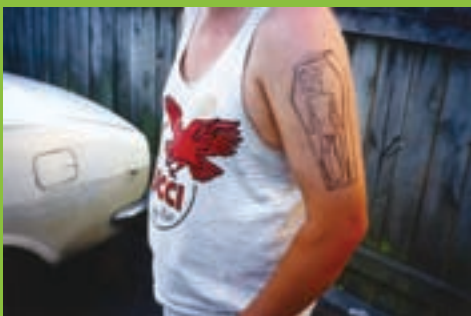
176 JACK CRIPPEN
UNTITLED - BUSH SCENE
 watercolour
 signed
 245 x 340mm
 \$400 - \$700



177 GRAHAM CORNWELL
STILL LIFE WITH RANGITOTO
 lithograph, 7/11
 title inscribed, signed and dated '85
 460 x 585mm
 \$200 - \$400'



178 GRAHAM CORNWELL
MEMORIES
 lithograph, 32/35
 title inscribed, signed and dated 8 - 85
 690 x 970mm
 \$200 - \$300



179 HAYDEN FRITCHLEY
GEORGE BUSH IN A COFFIN
 type C print
 395 x 600mm
 \$400 - \$700



180 DICK FRIZZELL
JUST OUTSIDE TAUMARUNUI
 lithograph, 40/50
 title inscribed, signed and dated 10/7/89 on the plate
 565 x 758mm
 \$900 - \$1500



181 PAT HANLY
SCREAMING CHILD - CONFUSED MOTHER
 graphite on paper
 title inscribed, signed and dated '92
 295 x 420mm
 \$1200 - \$2000



182 ROBERT FRANKEN
UNTITLED
 ink and pastel on paper
 signed and dated '88
 220 x 300mm
 \$150 - \$250



183 PABLO PICASSO
FIGURE WITH DOVES
 silkscreen scarf
 signed on the plate
 770 x 750mm
 \$200 - \$400



184 DON BINNEY
BEYOND WAINAMU, TE HENGA
 photolithograph
 title inscribed and signed
 510 x 715mm
 \$800 - \$1200



185 CHRISTINE MATHIESON
MODERNE
 oil on board
 signed and dated '87; title inscribed, signed and dated verso
 760 x 1020mm
 \$800 - \$1200



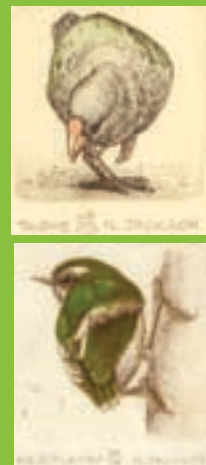
186 JENNY DOLEZEL
SOMEONE WITH MY FINGERPRINTS (II)
 lithograph, 15/30
 title inscribed, signed and dated 1995
 535 x 720mm
 \$800 - \$1400



187 PHILLIPA BLAIR
ICEBREAKER
 etching, 10/25
 title inscribed, signed and dated 1984
 280 x 150mm
 \$100 - \$200

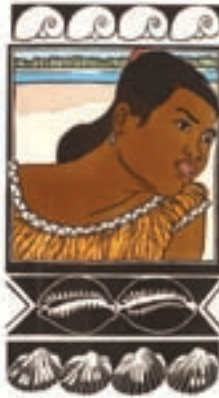


188 PHILLIPA BLAIR
LADDERS: FRANKFURT ON MAIN
 etching, 20/25
 title inscribed, signed and dated 1983
 280 x 170mm
 \$100 - \$200



189 RUSSELL JACKSON
TAKAHE TOGETHER WITH NZ RIFLEMAN
 two etchings, 68/150 AND 48/75
 title inscribed and signed on each
 80 x 80mm AND 100 x 70mm
 \$100 - \$150

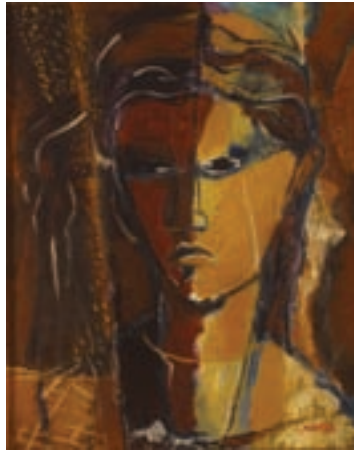
190-199



190 ROBIN WHITE
TWO SHELLS CALLED NOUDO
 lithograph, 10/30
 title inscribed, signed and dated 1985
 220 x 168mm
 \$1000 - \$1500

191 ROBIN WHITE
NAUTILUS
 lithograph, 14/30
 title inscribed, signed and dated '85
 217 x 170mm
 \$1000 - \$1500

192 ROBIN WHITE
THIS IS FLORENCE
 lithograph, 22/30
 title inscribed, signed and dated 1985
 280 x 170mm
 \$1000 - \$1500



193 PAMELA WOLFE
STILL LIFE WITH GLADIOLI
 pastel and acrylic on paper
 600 x 410mm
 \$200 - \$300

194 PAMELA WOLFE
STILL LIFE WITH TULIPS AND DAFFODILS
 pastel on paper
 540 x 370mm
 \$200 - \$300

195 L. MAFTEI
UNTITLED - PORTRAIT
 oil on card
 signed
 490 x 385mm
 \$100 - \$300



196 RUSSELL JACKSON
MOREPORK OWLS
 etching 14/40
 title inscribed, signed and dated '87
 285 x 170mm
 \$250 - \$400

197 JAN NIGRO
WANAKA
 ink and wash
 title inscribed, signed and dated '78
 280 x 185mm
 \$400 - \$600



198 PAUL JOHNS
DAME NGAIO MARSH
 screenprint, 20/25
 title inscribed and signed
 1010 x 750mm
 \$500 - \$800



199 CZECH ARTIST UNKNOWN
PORTAIT OF A MAN IN CHECKERED JACKET
TOGETHER WITH CHROMATIC
ABSTRACTION
 pastel on paper AND gouache on paper
 signed and dated 1983; signed
 230 x 190mm AND 285 x 425mm
 \$200 - \$400

200 LORRAINE RASTORFER**CLEAVE**

oil on board
 title inscribed, signed and dated 1997
 900 x 452mm
 \$600 - \$900

**201 ROBIN WHITE****SELF PORTRAIT WITH CONRAD AND SHELLS**

lithograph, 12/30
 title inscribed, signed and dated '85
 515 x 320mm
 \$1000 - \$1500

**202 PARATENE MATCHITT****UNTITLED**

burnished and incised steel on oil on rag paper
 signed and dated 7 - 9 - 92
 1030 x 698mm
 \$2000 - \$3000

**203 PHYLLIS SIMMONDS****DISTANT ROCK**

oil on board
 signed and dated '85
 780 x 582mm
 \$800 - \$1200

**204 PHILLIPA BLAIR****CALLIGRAPH**

screenprint, 7/20
 title inscribed, signed and dated 1980
 520 x 585mm
 \$400 - \$600

**205 PAMELA WOLFE****TAKAHE AT HOBSON BAY**

screenprint, 9/48
 title inscribed and signed
 625 x 460mm
 \$200 - \$400

**206 PAMELA WOLFE****STILL LIFE WITH TULIPS AND IRISES**

pastel on paper
 signed and dated July '86
 460 x 330mm
 \$400 - \$700

**207 PHILLIPA BLAIR****SNOW BLIND NYC**

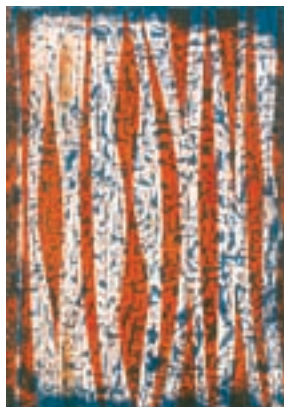
screenprint, 6/35
 title inscribed, signed and dated 1982
 410 x 315mm
 \$100 - \$300

**208 THEO SCHOON****UNTITLED**

screenprint, circa 1963
 original John Leech Gallery label affixed verso
 560 x 395mm
 \$1000 - \$2000

209 EION STEVENS**DUNEDIN MESSIAH**

acrylic on paper
 title inscribed, signed and dated 1985 verso
 230 x 185mm
 \$800 - \$1200



THE JIM DRUMMOND SALE

THE PERSONAL HISTORY OF A VISIONARY COLLECTOR TWO DAY AUCTION IN FIVE SESSIONS: SAT 2ND & SUN 3RD MAY

Twenty - four years ago Jim Drummond opened his antique store on Auckland's Anzac Avenue, but his passion for the work he would sell there was established long before.

The son of one of Crown Lynn pottery's chief engineers, Drummond grew up around the Crown Lynn site and developed his collector's eye early on. But it was the weirder, wackier items, those that other people weren't so interested in, that Drummond was always particularly drawn to.

In the years that followed, interest in the 'weird and wacky', in kiwiana, kiwi folk art and those unassuming pots and jugs from our childhood (or that of our parents) grew exponentially within New Zealand, and Drummond's Antiques was to become an Auckland institution, frequented by bargain hunters and serious collectors alike. With the closure of the store, Drummond is also parting with his own personal cumulation, giving connoisseurs the opportunity to view and buy work that a less discerning eye may have thrown away or otherwise neglected years ago.

While involving an ample selection of brickworks, maritime material, Depression - era furniture and much more, Drummond's collection is especially notable for its extensive array of studio ceramics. In particular, Crown Lynn pottery – to be expected given Drummond's upbringing – and Titian ware.

Of Crown Lynn little needs to be said. Established in Waitakere in 1948, importation restrictions enforced at the time allowed their production of domestic ware to flourish, resulting in virtually every kiwi household harbouring a liberal share.

The Titian Studio, in turn, benefited both from the continued restrictions and from the significant inroads Crown Lynn had made. Based in West Auckland, Titian was set up by Cameron and Dorothy Brown in around 1958 following their discontinuation of the Sherwood Pottery brand. As with many Crown Lynn designs (such as David Jenkin's swans, examples of which can be found here) many Titian designs were based upon ceramics found overseas. But Titian forms were often given a New Zealand twist, as in the case of the 'wahine' Toby mugs, which now lends them extra appeal as unpretentious kiwi artefacts.

But these are not the only ceramic treasures to be found in Drummond's collection. Examples of earlier potters: Jovan Rancich, the flamboyant Serbian - born maker, or Briar Gardner, with her experimental glazes, are just two examples of the New Zealand ceramic icons represented here.

Whether taken as a whole or disbanded, as it will shortly be, Drummond's collection creates a snapshot of New Zealand's history – a familiar and reassuring domestic history easily translated into contemporary surroundings. Thanks to Drummond's foresight these tokens of our past can now enjoy renewed appreciation in new homes.

JOANNA TREZISE



Left: Unknown carver Fireplace surround as a pare and whakawae, c.1880. (detail) \$15 000 - \$25 000

LOCATION: 3 ABBEY STREET, NEWTON, AUCKLAND

DAY 1 SATURDAY 2 MAY 10 AM TO 6PM

SESSIONS 1, 2 & 3

Session 1: [The Garage Sale]

Includes approx 300 uncatalogued and unreserved box lots (Drummond Antiques shop stock).

Note: This session will be conducted in the A+O carpark – entrance from Gundry Street.

COLLECTION: BOX LOTS MUST BE PAID FOR AND COLLECTED ON THE AUCTION DAY

10am to 12 noon*

1

Session 2: [The Jim Drummond Personal Collection Part 1]

lots 1 to 299 in this catalogue – the auction will resume upstairs in the main gallery.

12 noon to 3pm*

2

Session 3: [Stock in trade from Drummond's Antiques. Part 1]

Catalogued stock formerly from Drummond's Antiques, Anzac Avenue, Auckland

lots 500 to 900 approx

Note: items offered in this session are detailed on a separate catalogue available online at www.artandobject.co.nz or at A+O reception.

3pm to 6pm*

3

DAY 2 SUNDAY 3 MAY 10 AM TO 5PM

SESSIONS 4 & 5

Session 4: [Stock in trade from Drummond's Antiques. Part 2]

lots 900 to 1764.

Note: items offered in this session are detailed on a separate catalogue available online at www.artandobject.co.nz or at A+O reception.

10am to 3.30pm*

4

Session 5: [The Jim Drummond Personal Collection Part 2]

lots 1765 to 1900 in this catalogue.

3.30pm to 5pm*

5

*times are approximate

SATURDAY 25 APRIL

SUNDAY 26 APRIL

MONDAY 27 APRIL

TUESDAY 28 APRIL

WEDNESDAY 29 APRIL

THURSDAY 30 APRIL

FRIDAY 1 MAY

SATURDAY 2 MAY

SUNDAY 3 MAY

ANZAC NO VIEWING

11 AM – 4PM

9AM – 5PM

9AM – 5PM

9AM – 5PM

9AM – 5PM

9AM – 5PM

LIMITED VIEWING

LIMITED VIEWING

VIEWING

Note: The A+O carpark will be closed during the viewing of the Jim Drummond Auction

THE JIM DRUMMOND COLLECTION

SESSION 2 (PRECEDED BY THE SALE OF 300 BOX LOTS, SEE TITLE PAGE FOR FULL DETAILS)

- 1
Crown Lynn unique 'Experimental' series hand potted ovoid bottle vase. With small lathe turned neck. Black/grey glaze with random small slashes cut through the overglaze to reveal a white underglaze.
Stamp mark
\$400 - \$500
- 2
Crown Lynn unique 'Experimental' series hand potted squat spherical vase. With short neck, decorated with encircling bands of marine blue overlaid in brush point with finely trailed tangerine lines. Gilded at the rim. (small chip to gilt). Crown Lynn gilt mark.
\$300 - \$500
- 3
Crown Lynn unique 'Experimental' series hand potted mallet bodied vase.
With cream white exterior and grey/black interior at the mouth. Crown Lynn 'tiki' stamp
\$350 - \$450
- 4
Crown Lynn unique 'Experimental' series hand potted mallet bodied vase.
With slender neck. Egg yolk glazed exterior and grey/black interior at the mouth. Incised number 10
\$350 - \$450
- 5
Rare Crown Lynn white gloss glazed Hand Potted ovoid vase.
\$140 - \$180
- 6
Crown Lynn Hand Potted lathe turned beaker vase
\$100 - \$150
- 7
Another as above but with Mayfair label affixed
\$100 - \$150
- 8
Large Crown Lynn Hand Potted straight sided Shape 3 vase with lathe turned bands at rim.
\$600 - \$800
- 9
Ernest Shufflebotham for Crown Lynn Hand Potted vase, pale apricot, ovoid with lathe turning. Shape 59. Tiki mark.
\$400 - \$600
- 10
Ernest Shufflebotham for Crown Lynn Hand Potted vase, pale duck egg blue beaker shape. Shape 21. Shield mark.
\$300 - \$500
- 11
Ernest Shufflebotham for Crown Lynn Hand Potted vase, matt white mallet shape with flared mouth. Shape c.15. Printed mark.
\$300 - \$400
- 12
Ernest Shufflebotham for Crown Lynn Hand Potted vase, cylindrical with lathe turning. Shape 61. Tiki mark.
\$400 - \$600
- 13
Pair of Crown Lynn Wharetana Ware Bookends modelled as moko mokai.
Numbered 1019
\$4000 - \$6000
- 14
Pair of Crown Lynn Wharetana Ware bookends modelled as seated tiki figures with hands clasped to abdomen. Repair to base of one. Numbered 1020
\$600 - \$1000
- 15
Frank Carpay for Crown Lynn (Handwerk) small ceramic stoppered bottle.
painted with a simplified nude 'Eve'. Whilst rare one complete with 'hat' stopper is exceptionally so, additionally this example with original cork. Hairline crack at rim
\$3500 - \$4000
- 16
Small Crown Lynn model of a swan
Impressed number 134. Matt white with rare painted beak and eyes
\$70 - \$100
- 17
Crown Lynn medium sized (rare) model of a swan. Moulded number 2147. Satin white glaze (Produced for only one year approx)
\$400 - \$600
- 18
Crown Lynn 'Mk1' large swan vase
Dribble glazed in turquoise. Impressed number 170
\$500 - \$700

- 19
Titian Studios bottle vase shaped table lamp.
decorated with three rock art inspired figures in earth colours. Original period shade.
\$150 - 250







28



16



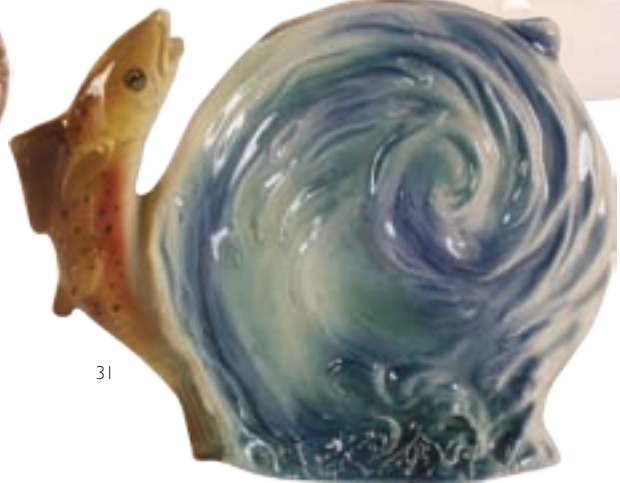
17



21



22



31



20



23



29



24



32



35

20
Aquila Ware model of a seal. 1970s.
Manufacturer's mark and Hand Decorated,
Andre.
Exhibited Titian Studioware: the ceramic art
of Cameron Brown. Auckland War Memorial
Museum. 2004. Curated by Mary Morrison.
\$250 - \$450

21
Titian Studios oval plate hand painted with a
portrait of Kewene Te Haho
This work and the following three plates appear
to have drawn the subjects from works by
Gottfried Lindauer in the Auckland City Art
Gallery collection. The Titian Studios artist is
thought to have been Mary Bailey.
Exhibited Titian Studioware: the ceramic art
of Cameron Brown. Auckland War Memorial
Museum. 2004.
\$450 - \$650

22
Titian Studios oval plate hand painted with a
portrait of Pare Watene
Exhibited as above
\$450 - \$650

23
Titian Studios oval plate hand painted with
an unnamed portrait, possibly Pare Watene.
Exhibited as above
\$450 - \$650

24
Titian Studios oval plate hand painted with an
unnamed portrait of a woman with tobacco
pipe. Exhibited as above
\$450 - \$650



25
Titian Studios wall pocket modelled as a yellow
rose
\$120 - \$160

26
Titian Studios wall vase modelled as acanthus
leaf. Green slash mark
\$80 - \$100

27
Titian Studios mug, decorated with picture of
Sid Holland, and epithet Sid's Mug. The interior
with a spider painted to the base. [he swallowed
the spider to catch the fly...]
Exhibited Titian Studioware: the ceramic art
of Cameron Brown. Auckland War Memorial
Museum. 2004.
\$150 - \$250

28
Titian Studio Sun and Palm Tree 'vase'
Modelled with one of the palm leaves as an
incipient handle to allow classification as utility
ware therefore attracting reduced sales tax. See
Lambert pg.111.
Exhibited Titian Studioware: the ceramic art
of Cameron Brown. Auckland War Memorial
Museum. 2004.
\$800 - \$1200

29
Rare Titian Studio model of a Palomino horse.
Possibly the only extant model of this horse.
Problems with slumping during firing caused
most of the small run to be discarded. Impressed
mark
\$1500 - 2000

30
Titian Studio Wahine Toby Jug
With red headscarf and green blouse
Exhibited Titian Studioware: the ceramic art
of Cameron Brown. Auckland War Memorial
Museum. 2004.
\$400 - \$500

31
Titian Studio Rainbow Trout 'vase'
The body of this vase/jug formed by a circular
river eddy. The fish as an incipient handle to allow
classification as utility ware therefore attracting
reduced sales tax. See Lambert pg.111.
Raised moulded 'palette' mark.
Restoration to fins
\$400 - \$600

32
Titian Studio Leaping Rainbow Trout Ashtray
(after Beswick Potteries). Impressed mark.
Exhibited Titian Studioware: the ceramic art
of Cameron Brown. Auckland War Memorial
Museum. 2004.
\$500 - \$700

33
Titian Studio Wahaika club shaped dish. With
moulded weku head handle. Transfer decorated
with a kiwi and egg to the bowl.
\$100 - \$150

34
Titian Studio multiple mouthed vase.
Modelled as daffodils issuing from a double
course of red bricks.
Green 'slash' and sgraffito incised mark
\$250 - \$350

35
Titian Studio Wahaika shaped dish.
With hand coloured transfer decoration
inscribed Maori Warrior
Green 'slash' and sgraffito incised mark .
\$100 - \$150

36
Titian Studio tata (bailer) shaped souvenir
dish. Transfer decorated with a leaping marlin.
Moulded posterior rim. Marked S.103
\$60 - \$80

37
Titian Studio kidney shaped dish
decorated with a leaping marlin on inky black
ground
\$60 - \$90

38
Titian Studio pottery mug with ashtray lid
modelled as a barrel decorated with a transfer
Maori Warrior
\$80 - \$100

39
Uncommon Titian Studio pottery mug
tapering cylindrical shape decorated with a
raised portrait of a Maori rangatira
\$100 - \$150

40
Uncommon Titian Studio pottery mug
for Auckland International Airport 29/1/66
(opening)
\$80 - \$100

41
Titian Studio large mug
Transfer decorated with a galleon and verso
with mallard ducks. factory label affixed and
impressed marks.
\$40 - \$60

42
Titian Studio for Presly Giftwares black
glazed ikebana vase. Oval shape on four feet.
Presleyware sticker affixed
\$50 - \$70

43
Titian Studio ikebana vase, shaped as above.
Matt grey glaze
\$50 - \$70

44
Titian Studio ovoid shoulder vase
brush point wheel banded decoration in muted
blue/grey/lilac tones. Numbered V.121
\$100 - \$120

45
Titian Studio strap leaf vase
With airbrush technique patterned surface
Numbered T.103
\$60 - \$80

46
Titian Studio campana shaped vase
Crackled purple lustre glazed. Impressed V.112
\$60 - \$80



47
Titian Studio ewer vase with 'Stone Henge' glaze. Decorated with Egyptian scenes and hieroglyphs. Impressed mark.
\$100 - \$150

48
Rare Titian Studio oblong dish
Moulded and painted with Maui (in a clinker dinghy) fishing up Aotearoa, framed by handles moulded as giant petrels. slight crazing
\$400 - \$600

49
Titian Studio small oval dish
moulded with Rangitoto viewed beneath the Auckland Harbour Bridge. Numbered S.110
\$60 - \$100

50
Titian Studio elliptical bowl in Stone Henge glaze decorated with airbrushed rock art drawings of wildlife. Numbered B.116
\$60 - \$80

51
Titian Studio two handled bowl (Greek kylix shape), decorated with Egyptian scenes and a border of raised oblong bosses. Impressed factory mark
\$200 - \$250

52
Titian Studio souvenir ashtray decorated with Palmerston North town clock
\$30 - \$40

53
Titian Studio souvenir ashtray inscribed Kia Ora from Te Puia Springs Hotel
\$30 - \$40

54
Titian Studio souvenir ashtray inscribed Souvenir of Tokomaru Bay.
Exhibited Titian Studioware: the ceramic art of Cameron Brown. Auckland War Memorial Museum. 2004.
\$40 - \$60

55
Titian Studio scalloped edged small bowl inscribed Kia Ora from New Plymouth
\$30 - \$40



56
David Jenkin design for Titian Studio 'Swoose' wall vase. Swan—goose combination
Numbered WV.104
\$100 - \$150

57
Titian Studio small cream 'Swoose' jug
Yellow glazed, with bird's head handle
\$30 - \$40

58
Titian Studio oval two handled bowl
Lustre glazed, transfer decorated with a song bird, (chips to base) along with another with a budgerigar. Marked KD.100

59
Titian Studio oval dish moulded and handpainted with a view of Rangitoto Island beneath the Auckland Harbour Bridge
Numbered S.109
\$200 - \$250

60
Titian Studio plate 'Souvenir of New Zealand' blue printed pastiche of Maori, landscapes, etc. Marked for Souvenirs - En - Gros, dated 1963
\$100 - \$150

61
titian Studio ovoid shoulder vase, moulded floral decoration in imitation of slip trailing, under midnight blue glaze. Numbered KV.103



62
Titian Studio lamp base
Inverse baluster shape decorated in brush point simulated marble
\$120 - \$150

63
Pair of Titian Studio small campana shaped urn vases. With leather black and white crackle glaze
\$150 - \$200

64
Titian Studio matt white campana shaped urn vase. Numbered PB.101
\$50 - \$60

65
Titian Studio airbrushed cylindrical bottle shaped table lamp base. With original period shade
\$80 - \$100

66
Very rare Titian Studio lime green and silver lustre glazed small size Hubble Bubble lamp base
\$300 - \$400

67
Very rare Titian Studio acid yellow and silver lustre glazed small size Hubble Bubble lamp base
\$300 - \$400

68
Titian Studio sanitary ware bathroom décor set
Comprising wall shelf, toothbrush holder, soap dish and towel rail brackets. All colour transfer decorated with exotic fish and seaweeds
\$400 - \$600





73



90

69
Titian Studio ashtray with sgraffito kiwi and Kia Ora from Te Puia Springs Hotel. Affixed label.
\$30 - \$40

70
Titian Studio tata (bailer) shaped dish. Transfer and hand painted Maori Chief, NZ. Impressed S.103
\$60 - \$80

71
Titian Studio Wakaika shaped dish. Decorated with moulded weku head handle, plain graduated celadon bowl.
\$70 - \$90

72
Titian Studio 'pounamu' glazed ashtray. Moulded as a weku head with extended tongue. Brush point 'slash' mark incised Titian NZ.
\$200 - \$300

73
Titian Studios Waka. Inscribed Maori War Canoe. Pre Crown Lynn takeover period
\$375 - \$525

74
Titian Studios Waka. Brush point 'slash' mark with sgraffito 'Titian, New Zealand'
\$375 - \$525

75
Titian Studio baluster shaped vase with faux woodgrain finish. Impressed marks and nuber V110
\$200 - \$250

76
Titian Studio vase shaped table lamp with fluted walls. Vermillion semi - lustre glazed
\$100 - \$150

77
Titian Studio cup and saucer/plate combination 'Rock art' decorated on 'stone henge' glazed ground
\$100 - \$150

78
Titian Studio vase shaped table lamp decorated with transfer of dandelion flowers and seed head, on a midnight blue ground. Mounted on a spun and pressed copper base
\$300 - \$400

79
Titian Studio oval hand painted plate Possibly be Mary Bailey. Decorated with anentitled Tropical Fish, Fiji.
\$250 - \$350

80
Titian Studio mallet bodied lamp base. Powder pink glaze with gilt brush point floral decoration. Original Gaylite sticker to base.
\$100 - \$150

81
Titian Studio 'modern' lamp base. Acid green coloured 'orange peel' glaze. Incised mark and Gaylite sticker.
Exhibited Titian Studioware: the ceramic art of Cameron Brown. Auckland War Memorial Museum. 2004.
Hairline crack to foot.
\$400 - \$500

82
Titian Studio vase, moulded leaf shape. Cream 'orange peel' glaze. Incised mark as above
\$50 - \$70

83
Titian Studio ewer vase. Moulded to the wall with roses. Incised mark as above
\$90 - \$140

84
Titian Studio baluster shaped vase with trumpet mouth. With raised decoration of grape vines. Incised mark as above
\$80 - \$130

85
Titian Studio small bowl with handcut pierced and moulded leaf patterned rim. Incised mark as above
\$50 - \$90



92



81

86
Titian Studio leaping blue marlin ornament
\$300 - \$4000

87
Titian Studio campana urn vase. White 'orange peel' glaze. Impressde number 593
\$100 - \$150

88
Late Titian 'Forest ware' model of a Japanese geisha
Modelled performing a fan dance. English floral transfer decorated. Printed mark
\$80 - \$100

89
Late Titian 'Forest ware' model of a puppy
Printed mark
\$50 - \$90

90
Rare Titian Studio vase
Moulded to the disc walls with goldfish. Modelled with incipient handle and spout to allow classification as utility ware therefore attracting reduced sales tax. See Lambert pg.111.
\$250 - \$350

91
Titian Studio 'Aquila' tankard
transfer decorated with lake and mountains and trout. Label affixed.
\$40 - \$50

92
Crown Lynn elephant
Trickle glazed maroon over dark brown
\$300 - \$400

93
Crown Lynn elephant
trickle glazed dark brown
\$250 - \$300

94 Crown Lynn elephant, golden yellow glazed \$200 - \$ 250	108 Crown Lynn spaniel as above Airbrushed brown - grey \$100 - \$140	122 Rare early Crown Lynn rabbit model. Fractional numbered, pale blue - green dribble glazed \$250 - \$350
95 Crown Lynn elephant model (smaller) dribble glazed green - yellow \$100 - \$150	109 Crown Lynn spaniel caricature model chasing tail. Airbrushed grey tones \$200 - \$250	123 Rare early Crown Lynn Scottie dog. Fractional numbered. Pale blue - green dribble glazed \$250 - \$350
96 Crown Lynn elephant model. Deco shape, trunk down, airbrushed multi - colour glaze \$250 - \$350	110 Crown Lynn cat caricature model with arched back. Airbrushed grey tones. Impressed 20 - 6 \$200 - \$250	124 Early Crown Lynn Deco shaped bulldog model. Brown dribble glazed \$250 - \$350
97 Crown Lynn elephant model. Deco shape, trunk down, matt white glaze \$200 - \$300	111 Crown Lynn Staffordshire terrier model. Airbrushed brown tones \$200 - \$250	125 Crown Lynn seated donkey model Airbrushed grey tonal glazes. \$200 - \$250
98 Crown Lynn Deco shape horse model. Impressed number 190. Airbrushed powder blue, satin glaze \$200 - \$250	112 Crown Lynn Scottie dog model Impressed number 178. Airbrushed grey tonal \$80 - \$120	126 Crown Lynn seated donkey. Airbrushed blue - plum tonal glazes. Hairline crack \$100 - \$150
99 Crown Lynn Deco shaped horse model Soft brown glaze \$200 - \$300	113 Crown Lynn Scottie dog model. Matt white glaze \$80 - \$120	127 Crown Lynn Study of a Giant Petrel. Airbrushed naturalistic colours \$400 - \$500
100 Crown Lynn Deco shaped horse model gloss white glazed \$200 - \$250	114 Crown Lynn large spaniel. Airbrushed multi - colour tonal \$400 - \$600	128 Crown Lynn triangular faceted ashtray. Dribble brown glazed with dribble green glazed bird perched to the rim \$200 - \$250
101 Crown Lynn Deco shaped fawn model (bambi) Impressed 189. Airbrushed naturalistic colours \$250 - \$300	115 Crown Lynn black glazed Scottie dog model. \$40 - \$50	129 Crown Lynn ashtray as above. Dribble green glazed and golden brown glazed bird \$200 - \$250
102 Crown Lynn Deco shaped fawn. Matt white glaze \$200 - \$250	116 Crown Lynn matt white Scottie dog model \$40 - \$50	130 Rare early Crown Lynn Scottie dog model. Pale green dribble glazed \$250 - \$350
103 Rare Crown Lynn hippopotamus model (Khama). Impressed number 207. Matt white glazed \$400 - \$600	117 Crown Lynn model of two pointer dogs. Multi - coloured airbrushed. Impressed number 179 \$200 - \$300	131 Crown Lynn small model of a swan fractional numbered. Turquoise - green dribble glazed \$130 - \$170
104 Rare Crown Lynn prowling panther model Matt white glaze \$300 - \$400	118 Crown Lynn model of two seated spaniels Naturalistic coloured airbrushed. Impressed number 172 \$150 - \$200	132 Pair of Crown Lynn bookends modelled as polar bears. Fractional numbered. Maroon over green dribble glazed \$400 - \$500
105 Crown Lynn seated spaniel model. Airbrushed tonal greys \$80 - \$120	119 Crown Lynn model of a fawn. Rare colourway graduated naturalistic tones. Impressed 202 \$60 - \$100	133 Crown Lynn beaker vase moulded as bromeliad leaves. Trickle glaze maroon over turquoise. Impressed number 62 and incised fractional numbers. \$80 - \$100
106 Crown Lynn spaniel, modelled lying stretched out. Airbrushed tonal greys \$150 - \$ 200	120 Two Crown Lynn Easter egg bunny models, one two - tone airbrush colourway, one matt white \$40 - \$60	134 Crown Lynn beaker vase moulded as bromeliad leaves. Trickle glaze maroon over aple brown. Incised fractional numbers. \$120 - \$180
107 Crown Lynn seated spaniel, head cocked Airbrushed tonal greys \$80 - \$120	121 Crown Lynn kiwi wall vase model. Fractional numbered. Pale blue - green dribble glazed \$100 - \$150	

135

Crown Lynn squat circular vase moulded as palm leaves. Trickle glaze – maroon over pale brown. printed mark

\$100 - \$150

136

Crown Lynn for United States Navy, WWII cereal bowl, plain white glaze

\$100 - \$150

137

Crown Lynn cereal bowl modelled on the above. With green and brown dribble glazes

\$100 - \$150

138

Crown Lynn cereal bowl, with green/brown/purple dribble glazes

\$100 - \$150

139

Crown Lynn ovoid vase. Maroon over golden yellow glaze

\$100 - \$150

140

Crown Lynn slip cast retailers shelf display logo Moulded and gilded with a crown motif and Crown Lynn, New Zealand

\$300 - \$400

141

Crown Lynn unique refrigerator water jug. The typical McAlpine or prestcold moulded name to the side absent. dark blue glaze

\$800 - \$1200

142

Crown Lynn small oblong dish. Decorated with the NZ Post Office Opihi Taniwha 20 cents stamp facsimile and overprinted 'P.O. 'cancellation' dated 1970

\$60 - \$80

143

Crown Lynn small oblong dish. Decorated with the NZ Post Office Tasman Glacier \$1 stamp facsimile and overprinted 'P.O. 'cancellation' dated 1970

\$60 - \$80

144

Post production prototype Crown Lynn/Dorothy Thorpe component tazza. Using a salad bowl raised on a ball foot/handle

Santa Barbara yellow/white colourway
\$300 - \$500

145

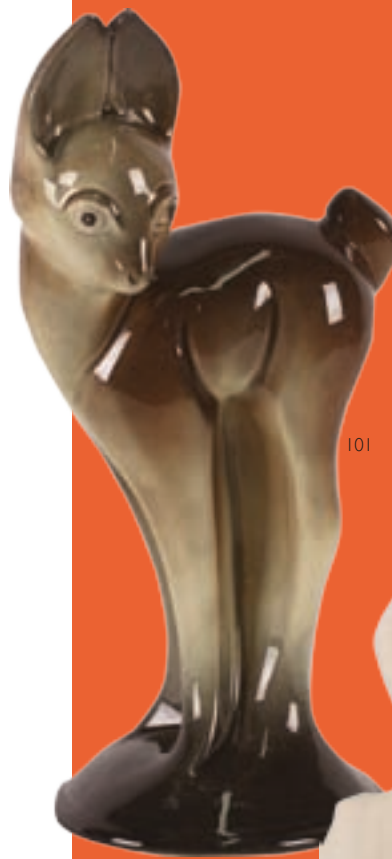
Post production prototype Crown Lynn/Dorothy Thorpe component tazza. Using a dessert bowl raised on a ball foot/handle

\$200 - \$500

146

Crown Lynn, Dorothy Thorpe Pine pattern gravy boat. Hairline crack

\$100 - \$150



101



104



127



103



130



141

141



145



122



132



147

147

Crown Lynn, Daniel Steenstra hand crafted series ovoid vase, decorated on a treacle brown ground with brushpoint black floral designs

\$400 - \$500

148

Crown Lynn, Ernie Shufflebotham Coronation commemorative two handled mug. Impressed Number 432

\$150 - \$200

149

Crown Lynn, Daniel Steenstra baluster vase handpainted with daffodils

\$150 - \$200

150

no lot

151

Crown Lynn tobacco jar. With original spring fitted, turned kauri lid. Medium brown dribble glazed

\$100 - \$125

152

Crown Lynn fruit bowl. Scalloped rimmed, fluted walled. medium brown dribble glazed

\$80 - \$120

153

Crown Lynn flaring trumpet vase. Impressed number 35 - 8, medium brown dribble glazed

\$100 - \$150

154

Crown Lynn barrel shaped lamp base. With flaring foot, turned kauri cap and brass lamp holder. Medium brown drizzle glazed

\$200 - \$250

155

Crown Lynn swollen cylindrical vase. Golden yellow dribble glazed exterior and green dribble glazed interior. Stamped mark

\$150 - \$200

156

Crown Lynn swollen cylindrical vase. Green over maroon and turquoise dribble glaze. Incised numbers and 'ddd' or 'PPP'

\$175 - \$225

157

Crown Lynn swollen cylindrical vase. Dark green and maroon dribble over light green glaze. Incised numbers and stamped mark

\$175 - \$225

158

Crown Lynn Arts and Crafts style tulip shape vase. Maroon and turquoise treacle glaze. Impressed number 67 and fractional numbers

\$150 - \$175

159

Crown Lynn vase similar to above

\$150 - \$175

160

Crown Lynn mallet bodied lamp base

With ring turned neck and brass lamp holder. Maroon and turquoise treacle glazed

\$200 - \$250

161

Crown Lynn fruit bowl. With scallop rim and fluted walls. Maroon dribble glaze with hints of turquoise. Incised fractional numbers.

\$80 - \$120



177



167



183



189

- 162
Crown Lynn tall tapering cylindrical ewer vase. Moulded to the walls with tulips. Treacle golden brown glazed. Stamped mark
\$150 - \$200
- 163
Crown Lynn deco shaped vase. Ovoid body issuing from a ribbed support base. Treacle golden brown glazed. Stamped mark.
\$150 - \$200
- 164
Crown Lynn Deco shaped vase as above. Treacle golden brown glaze over green. Incised numbers
\$150 - \$200
- 165
Uncommon shaped Crown Lynn tapering barrel shaped vase. With encircling ribs. treacle golden brown over maroon glaze
\$150 - \$200
- 166
Uncommon shape Crown Lynn vase. Ovoid with multiple uniformly ribbed walls, dark brown treacle glaze over golden yellow
\$150 - \$200
- 167
Rare shaped Crown Lynn vase. Ovoid shape with short neck, moulded flowers at the shoulder; uniformly ribbed walls. Dark brown treacle over golden yellow glaze. Impressed no.85 and fractional numbers
\$250 - \$300
- 168
Crown Lynn beaker vase. The walls moulded with spade motifs. Celadon dribble glaze. Incised fractional numbers
\$100 - \$150
- 169
Crown Lynn bottle vase. Incipient handles to the shoulder; ribbed trumpet neck. celadon glazed. Incised fractional numbers
\$100 - \$150
- 170
Crown Lynn baluster shaped vase. Fluted walls and scalloped mouth. Celadon glazed. Incised fractional numbers
\$100 - \$150
- 171
Crown Lynn dark blue glazed Raleigh (bicycles) advertising ashtray
\$40 - \$60
- 172
Pair of Crown Lynn blue dribble glazed tulip shaped salt and pepper
\$30 - \$50
- 173
Crown Lynn swollen cylindrical vase. Lilac over mid - brown dribble glaze. Stamped mark
\$150 - \$200
- 174
Crown Lynn meiping vase. Moulded with strap leaves to the walls. Blue and treacle brown glazed. Original label to the shoulder. Incised no.84
\$150 - \$200
- 175
Crown Lynn vase modelled as a wheat sheaf with ribbon encircling the foot. Dark brown dribble glaze. Impressed no.396
\$100 - \$200
- 176
Crown Lynn baluster shaped ewer vase. Pale golden yellow semi lustre with hand painted foliate decoration. Stamp mark
\$100 - \$150
- 177
Rare shape Crown Lynn Arts & Crafts style vase. Tapering hexagonal section moulded with 'riveted flashings' to the angles. Rare colourway (in imitation of Ruskin high fired wares) purple - lilac dribble glaze. Incised no.4, impressed no.46
\$300 - \$500
- 178
Crown Lynn cereal bowl. Two tone green dribble glaze
\$100 - \$150
- 179
Crown Lynn souvenir ashtray. circular; sepia transfer decorated view of North head and Rangitoto 'Greetings from Auckland NZ'
\$30 - \$50
- 180
Crown Lynn advertising ashtray. circular moulded light blue glazed with TEAL insignia
\$60 - \$80
- 181
Crown Lynn advertising ashtray. Circular; moulded with Onehunga Woollens
\$30 - \$50
- 182
Crown Lynn advertising ashtray. Circular moulded with 'Dalton debs' to centre
\$30 - \$50
- 183
Crown Lynn advertising ashtray for Beechey & Underwood. Modelled with an Art Deco figure of an office worker with monogram B&U on his briefcase, standing on the rear rim
\$180 - \$220
- 184
Crown Lynn advertising ashtray for McAlpine Refrigeration (restoration)
\$60 - \$80
- 185
Crown Lynn advertising ashtray Crown Lynn Potteries Dealer Conference 1962
\$30 - \$40
- 186
Crown Lynn Empire Games 1950 commemorative tankard
\$50 - \$75
- 187
Crown Lynn advertising tankard. '3 Cheers - Drink Laugh & Be Merry' [Quality Spincraft Aluminium Ware]
\$50 - \$75
- 188
Rare Crown Lynn Air New Zealand [Knows the South Pacific Best] on - board cocktail beaker. Red brown glaze. incised decoration of Islander portraits and tiki heads
\$80 - \$100
- 189
Uncommon Crown Lynn Air New Zealand [Knows the South pacific Best] on board cocktail beaker. Incised decoration of resort landscapes. Golden yellow glaze
\$50 - \$70
- 190
Crown Lynn small tulip vase. Pale celadon glaze. Moulded around the foot with sinuous curlicles
\$30 - \$50
- 191
Crown Lynn '20 year Club' cup. Individually named and numbered in gilt
\$40 - \$60
- 192
Crown Lynn bisque ovoid vase. Hand painted by Ivy Williams with a hibiscus flower
\$80 - \$100
- 193
Crown Lynn coffee mug in treacle glaze, with moulded panel of a potter at his wheel and another in gloss white
\$30 - \$50
- 194
Unique [Crown Lynn] coffee mug, with moulded caricature figure of Henry Sawyer (the Seconds Shop manager) with speech balloon 'Bloody Pin 'Oles' and 'BOSS'. marked underneath: Made by Thompson 74. Provenance: Purchased from the estate of Henry Sawyer
\$50 - \$80
- 195
Crown Lynn (Phillipines made) Sept 1976 Sevens Hong Kong Nomads Rugby Tour souvenir toilet pan mug
\$40 - \$60
- 196
Crown Lynn spherical lamp base. With ribbed walls and tree feet. Kauri capped. Mid - brown dribble glazed. Stamped mark
\$200 - \$300
- 197
Crown Lynn lamp base as above. Metal capped. Stamped mark and incised fractional numbers. Pale green dribble glazed
\$200 - \$300



198
Crown Lynn 'Three Faces of Eve' lamp base. Blue - green semi - lustre glaze with golden highlights (Titian - type glaze)
\$800 - \$1100

199
Crown Lynn 'Three Faces of Eve' lamp base. Matt white glaze. Restoration to base
\$400 - \$600

200
Crown Lynn 'Three Faces of Eve' lamp base, designed by David Jenkin. Cream yellow glazed. Restoration to the top
\$500 - \$700

201
Crown Lynn lamp base modelled as a seated naked lady on a rocky base. Modelled by David Jenkin. With original painted steel tube lamp support. Matt white glaze
\$400 - \$600

202
Rare Crown Lynn lamp base modelled as a horse's head by David Jenkin. Matt white glaze
\$800 - \$1000

203
Crown Lynn campana shaped urn table lamp base in matt white.
\$80 - \$100

204
Crown Lynn table lamp base, fluted canister shape with scattered floral decoration
\$80 - \$100

205
Daniel Steenstra design for Crown Lynn table lamp base with fine brush point candystripe decoration
\$150 - \$200

206
Emerald green glazed table lamp base, possibly Titian, with Milne & Choice label
\$40 - \$60

207
Crown Lynn biscuit blank enamel painted finish by Royal Oak Potteries with colourful bands. Shape 3 medium size
\$150 - \$200

208
Crown Lynn biscuit blank enamel painted finish by Royal Oak Potteries in pastel bands. Shape 46, medium size
\$150 - \$200

209
Crown Lynn Hand Potted beaker vase by Daniel Steenstra. Woodgrain with incised turned bands framing slip dotting
\$150 - \$200

210
Large Crown Lynn Hand Potted tapering vase. Shape 23. Lathe turned walls
\$600 - \$800

211
Daniel Steenstra for Crown Lynn lidded squat baluster vase, painted faux marble effect with white banding.
\$100 - \$125

212
Daniel Steenstra for Crown Lynn short
baluster vase decorated previous lot
\$120 - \$140

213
Daniel Steenstra for Crown Lynn jardinière
and saucer with sponged marbled finish in
browns and greens and lathe turned bands
\$150 - \$200

214
Daniel Steenstra for Crown Lynn jardinière
and saucer with marbled finish in greens
and lathe turned bands
\$150 - \$200

215
Daniel Steenstra for Crown Lynn jardinière
and saucer with sponged marbled finish in browns
and lathe turned bands
\$150 - \$200

216
Daniel Steenstra for Crown Lynn jardinière and
saucer with sponged marbled finish in browns
and greens and reds. Hairline crack
\$80 - \$100

217
Daniel Steenstra for Crown Lynn green glazed
squat vase with pattern of raised dots in white
slip. Incised and printed marks
\$300 - \$350

218
Hand Potted Crown Lynn float bowl with
airbrush speckled brown eggshell glaze, cream
interior. Incised mark
\$100 - \$150

219
Crown Lynn Hand Potted tall shoulder vase
painted with a branch of feathery colourful
leaves. Printed marks.
\$300 - \$500

220
Mirek Smisek for Crown Lynn 'Bohemia Ware'
tapering cylindrical vase, decorated sgraffito on
matt brown glaze of trellis - like amoebic forms
\$400 - \$600

221
Mirek Smisek for Crown Lynn 'Bohemia Ware'
tapering ovoid vase, decorated with sgraffito
through light matt brown glaze of lattice lozenge
forms
\$400 - \$600

222
Mirek Smisek for Crown Lynn 'Bohemia Ware'
short shoulder vase, decorated with sgraffito
through matt brown glaze of concentric line
amoebic forms. Drilled as lamp base
\$400 - \$600

223
Mirek Smisek for Crown Lynn 'Bohemia Ware'
tapering cylindrical vase, decorated with sgraffito
through matt brown glaze of concentric line
amoebic forms
\$400 - \$600



201



202



205



210



217



219



222



223



220



221



231



234



237

224

Mirek Smisek for Crown Lynn small posy vase
lathe turned foot through matt mocca glaze
\$100 - \$150

225

Crown Lynn float bowl matt white. Shape 52.
Tiki mark
\$80 - \$100

226

Crown Lynn float bowl, gloss black glaze. Shape
51.
\$100 - \$150

227

Crown Lynn float bowl, celadon glaze. Shape 55.
Printed mark.
\$150 - \$200

228

Frank Carpay for Crown Lynn deep bowl with
chillies and green pepper slices pattern to the
wall. Tiki stamp and Handwerk cipher. Number
781 - 7
\$400 - \$600

229

Frank Carpay for Crown Lynn, fruit bowl and
set of six dessert bowls. Decorated with a
vacant eye pattern. Tiki stamp and Werk cipher.
Number 769 - 10
\$1000 - \$1500

230

Frank Carpay for Crown Lynn small hors
d'oeuvres dish with fluted rim, sgraffito to the
well through blue glaze with a vine leaf
\$100 - \$150

231

Frank Carpay for Crown Lynn coffee mug
decorated with hand painted design. Tiki mark
Numbered 772 - 10. Restored rim
\$250 - \$300

232

Arthur and Olive Rhodes for Crown Lynn
cylindrical vase with capstan shaped neck,
in natural red clays with clear glaze and hand
worked surface decoration. Tiki stamp
\$300 - \$500

233

Arthur and Olive Rhodes for Crown Lynn
angular baluster shaped vase with hand worked
surface collar. In natural clay with clear glaze. Tiki
stamp.
\$300 - \$500

234

Arthur and Olive Rhodes for Crown Lynn
large baluster vase, with hand worked surface
decoration. In natural two colour clays. Tiki
stamp.
\$350 - \$550

235

David Jenkin for Crown Lynn Expo '70 platter;
transfer decorated with the Maui myth and
relief pattern of pah palisades intersected by an
abstracted pattern simulating boiling mud pools.
The myth printed to the back.
\$400 - \$600

236

Rare Crown Lynn sample plate decorated with
transfer shields and logos of various institutions
and clubs as an encircling band.
\$200 - \$300

237

Temuka Pottery tobacco jar and cover. Designed
by T N Lovatt, Mauve streaky glazed base with
moulded Maori motifs, celadon green glazed top
modelled as a Maori chief. The top restored.
\$700 - \$900

238

Parker Pottery for Lincoln Wines flask and
stopper. Lozenge section, brown treacle glaze,
decorated in high relief with a tiki and manaia
figures and curvilinear motifs.
\$250 - \$350

239

Unmarked, unglazed biscuit flask as above,
lacking stopper.
\$200 - \$250

240

Mavis Jack small emerald green glazed pin dish.
Decorated with a raised tiki figure to the well.
Incised signature under.
\$60 - \$80

241

Modified Titian Ware mould (possibly Portage
Road pottery, New Lynn [ex Crown Lynn staff])
bailer shaped dish. Modelled with Maori motifs
and map of NZ. Incised marks verso and Brooke
Ceramic label
\$100 - \$200

242

Crown Lynn Art Déco wall vase cream glazed,
moulded with seahorse. Hairline to back.
\$60 - \$100

243

Two Royal Oak Pottery hand painted biscuit
ware wall vases, modelled as a scallop shell and
straw bonnet. One labelled
\$60 - \$80

244

Three Crown Lynn biscuit blanks wall pocket
vases painted by Royal Oak Pottery in enamels,
one modelled as a pigeon roost.
\$50 - \$70

245
Two Crown Lynn wall pocket vases, green glazed.
Shapes 121 and 122 (the later wit faults to back)
Modelled as rock face and tree trunk.
\$100 - \$150

246
Crown Lynn biscuit blank painted by Royal Oak
Pottery wall pocket vase. Modelled as a magnolia
and songbird
\$60 - \$80

247
Two white Crown Lynn wall vases, Shape 8 and
506
\$80 - \$100

248
Two white Crown Lynn wall vases – dahlia head
and daffodil flower
\$100 - \$130

249
Four small Crown Lynn wall pockets, shape 464,
variously glazed
\$60 - \$80

250
Four small Crown Lynn wall pockets, various
shapes
\$60 - \$80

251
Crown Lynn 'Kelston' Fruit decorated water jug
and five cups
\$80 - \$120

252
Crown Lynn 'Ascot' coffee set in maroon and
cream with gilt highlights (3 cups and saucers)
\$80 - \$120

253
Crown Lynn 'all - over - floral' decorated plate.
\$50 - \$100

254
Set of three graduated Crown Lynn mixing
bowls, butterscotch and mocca banded
\$75 - \$100

255
Uncommon Crown Lynn lathe turned mixing
bowl for the Ritemp Food Mixer, manufactured
for the English Electric Company Ltd in Preston,
Lancashire. Cream glaze.
\$60 - \$100

256
Crown Lynn oblong white dish moulded with
chinoiserie motifs
\$60 - \$80

257
Crown Lynn vitrified ware white cheese or
butter dish and cover
\$40 - \$60

258
Timaru Potteries mixing bowl with daubed
glazes. Printed mark, c.1940s. D.300mm
\$60 - \$100

259
Glen Afton large mixing bowl. Moulded with
typical V shapes. Buff coloured. D.350mm.
Ref : Pottery in NZ, Lambert, p.90.
\$150 - \$250

260
Glen Afton medium size mixing bowl as above
D.300mm.
\$125 - \$200

261
Glen Afton slip cast trough vase, green and
cream glazed on straw coloured body.
Ref and Illustrated Pottery in NZ, Lambert, p.89.
\$150 - \$250

262
Rare Partridge Pottery slip cast biscuit ware
bowl painted in enamels on a red, blue and
white speckled ground with a yellow dahlia.
Original label to interior.
Ref: Pottery in NZ, Lambert, pp119 - 120.
\$40 - \$60

263
Elizabeth Matheson (PAKA) pottery twin lipped
ewer vase. Blue glaze. Incised marks and date
'42
\$80 - \$100

264
Elizabeth Matheson (PAKA) pottery small green
glazed jug, dated '48
\$40 - \$60

265
Olive Jones sky blue glazed squat baluster shaped
vase. Incised signature and number
\$150 - \$200

266
Olive Jones tapering cylindrical vase with green
glaze over red underglaze, wax resist gestural
floral design low on one side. Incised signature
and date '56
\$300 - \$350

267
Olive Jones ring trough vase. Plum glazed. Incised
signature and number
\$200 - \$250

268
Small Olive Jones squat circular vase with thick
crackled yellow glaze and painted Arts and
Crafts plaited pattern to the shoulder in green.
Incised signature.
\$200 - \$250

269
Olive Jones squat circular vase, pale cherry glaze.
Incised signature and numbers
\$180 - \$220

270
Olive Jones squat baluster vase, plum glaze with
speckling imitating the Chinese hare's fur glazes.
Incised signature.
\$300 - \$400



268



271

271
Briar Gardner Art Deco posy vase with flaring
rim. Yellow green glazes. Incised signature.
\$200 - \$250

272
Briar Gardner circular bowl with turned walls.
Glazed in imitation of Chinese chun - type glaze.
Incised signature.
\$200 - \$250

273
Briar Gardner deep bowl with majolica - type
yellow green glaze.
\$200 - \$250

274
Briar Gardner tapering cylindrical small vase
with turned walls. Incised signature and date
1/5/41
\$250 - \$350

275
Briar Gardner spherical Art Deco shaped vase,
with lathe turned walls, Green brushed glaze
over yellow underglaze. Incised marks: NZ
Centennial 1939 - 40 and signature.
\$400 - \$600

276
Briar Gardner large oval trough vase with murky
olive and dark plum glazes. Incised signature.
\$300 - \$500

277
Briar Gardner small squat circular Art Deco
ewer. Green majolica - type glazes. Incised initials,
NZ and date: 14/10/32
\$150 - \$200



282

289



288



278



295

278

Briar Gardner circular bowl with inverted rim. Incised signature, NZ and dated:29/7/35. \$350 - \$450

279

Briar Gardner small squat baluster vase. Green glazed, incised with koru motif to the shoulder. \$150 - \$200

280

Briar Gardner circular posy vase. In majolica - like green blue glazes. Incised signature \$150 - \$200

281

Briar Gardner / R.F. Carr circular posy vase. In similar glazes to above. Incised to the walls R F Carr ~ Made July 1943 Whilst A Patient ~ Auckland Hospital. Gardner performed occupational therapy classes at Auck Hosp. \$100 - \$150

282

Elizabeth Lissaman glazed terra cotta wall plate Decorated with three birds. An impressed pattern to the footring. Date code for 1974. \$350 - \$500

283

Elisabeth Lissaman cream jug decorated with a Mycean scroll pattern on powder blue and dark blue ground. Incised marks \$150 - \$250

284

Elisabeth Lissaman honey pot , banded brown glazes on red clay body. The lid as a sombrero. \$60 - \$80

285

Pair of William Speer agate ware brickworks inverse baluster shaped vases. Made whilst working at Gardner Works, New Lynn. Faults. \$400 - \$800

286

Minnie F White Art deco ewer vase. Mottled blue glaze over red clay body. Incised and painted signatures and date: 1930. \$800 - \$1000

287

Minnie F White two handled squat circular vase with brown salt glaze. Painted signature \$300 - \$400

288

Jova Rancich large ovoid vase, majolica - type glazes in yellow brown and green. Impressed mark J Rancich, Auckland. \$800 - \$1200

289

Jova Rancich large ovoid vase with flaring mouth. Blue - green majolica - type galze. Impressed mark \$800 - \$1200

290

Jova Rancich squat circular vase. Majolica - type green - yellow glaze. Incised with inverted GL and under: Made in New Lynn, JR & Co, NZ. \$400 - \$600

291

Jova Rancich squat circular vase, inky blue glaze. Impressed mark under glazed base. \$100 - 150

292

O C Stephens kaka beak shaped wall pocket vase, with speckled brown glaze. Printed mark. \$150 - \$200

293

Temuka Potteries commissioned advertising ware ashtray for General Electric Motors. Modelled with an electric motor to the rim. \$150 - \$200

294

Milton Pottery ewer vase. Majolica glazed body with Barningtons, Dunedin made spelter gilt mounts. Ref: Pottey in NZ, Lambert, p.27. Mount damaged \$400 - \$600

295

Milton Pottery ewer vase. Majolica glazed body as above \$600 - \$800

296

St Ives Pottery, England mug. Tenmoku glazed. \$100 - \$150

297

Pair of St Ives Pottery mugs, waisted shape. \$100 - \$150

298

St Ives Pottey small bowl with gestural brushwork decoration. \$100 - \$150

299

Troika , St Ives, England part coffee set. Faults. \$200 - \$300

300

Three pieces of Rick Rudd raku fired, crackle glazed pottery, various asymmetric shapes. One piece glaze chipped \$200 - \$300

**FOLLOWED BY SESSION 3
400 SHOP STOCK LOTS
SEE TITLE PAGE FOR DETAILS
AND TIMES**

END OF DAY ONE
SATURDAY 2ND MAY

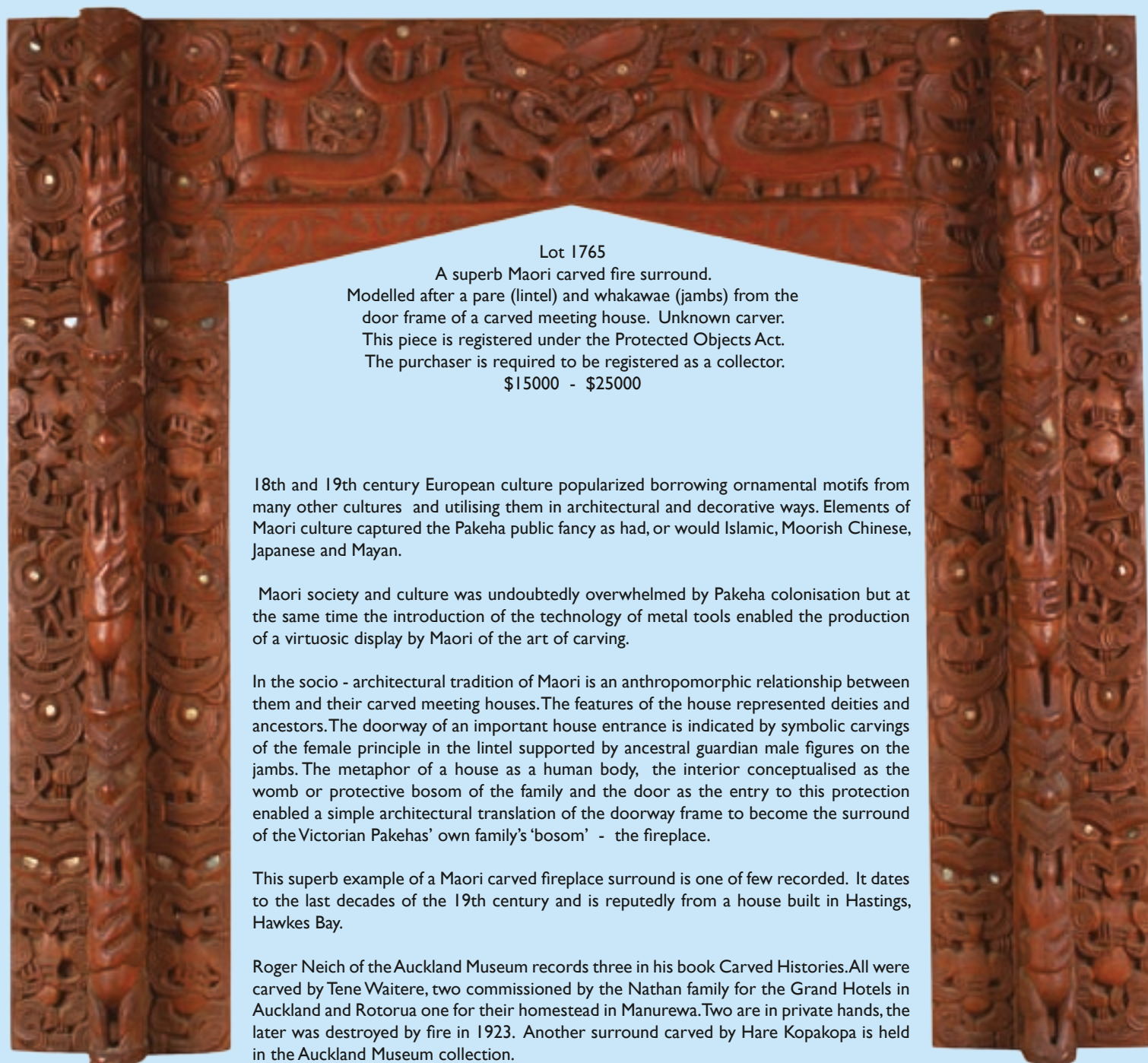
THE JIM DRUMMOND COLLECTION

SESSION 5 (PRECEDED BY SESSION 4)

START OF DAY 2 SUN 3RD MAY

- 800 SHOP LOTS

SEE TITLE PAGE FOR FULL DETAILS & TIMES)



Lot 1765

A superb Maori carved fire surround.
Modelled after a pare (lintel) and whakawae (jambs) from the door frame of a carved meeting house. Unknown carver.
This piece is registered under the Protected Objects Act.
The purchaser is required to be registered as a collector.
\$15000 - \$25000

18th and 19th century European culture popularized borrowing ornamental motifs from many other cultures and utilising them in architectural and decorative ways. Elements of Maori culture captured the Pakeha public fancy as had, or would Islamic, Moorish Chinese, Japanese and Mayan.

Maori society and culture was undoubtedly overwhelmed by Pakeha colonisation but at the same time the introduction of the technology of metal tools enabled the production of a virtuosic display by Maori of the art of carving.

In the socio - architectural tradition of Maori is an anthropomorphic relationship between them and their carved meeting houses. The features of the house represented deities and ancestors. The doorway of an important house entrance is indicated by symbolic carvings of the female principle in the lintel supported by ancestral guardian male figures on the jambs. The metaphor of a house as a human body, the interior conceptualised as the womb or protective bosom of the family and the door as the entry to this protection enabled a simple architectural translation of the doorway frame to become the surround of the Victorian Pakehas' own family's 'bosom' - the fireplace.

This superb example of a Maori carved fireplace surround is one of few recorded. It dates to the last decades of the 19th century and is reputedly from a house built in Hastings, Hawkes Bay.

Roger Neich of the Auckland Museum records three in his book Carved Histories. All were carved by Tene Waitere, two commissioned by the Nathan family for the Grand Hotels in Auckland and Rotorua one for their homestead in Manurewa. Two are in private hands, the later was destroyed by fire in 1923. Another surround carved by Hare Kopakopa is held in the Auckland Museum collection.

1766

Depression period set of drawers made from Vacuum Oil Company (Plume) pine boxes with six inserted drawers made from 4 gallon petrol tins.

\$1000 - \$1500

This set of 'drawers' has been used in the television drama 'Life's a Riot' directed by Ian Mune, written by Dean Parker, about the 1932 Depression era Queen Street riots to be screened soon on TV ONE's Sunday Theatre.

1767

Depression period 'occasional' table made from an export cheese box. The three tiered kahikatea wood polygonal shelves with open slat sides were originally used to export large cheese 'rounds'. Stamped exporter's mark under the bottom tier:

\$400 - \$600

As above this table was used in the filming of 'Life's a Riot'.

1768

Depression period occasional table. The top made from an export cheese box lid, stamped for the Cambridge Dairy Co., raised on five turned legs (with various turnings)

\$400 - \$600

1769

Fairground or raffle 'Wheel of Fortune' game. The blue and white painted wheel raised on a 'gallows' post.

\$200 - \$400

1770

NZ folk art console table made of dark stained rimu and manuka branches and twigs, in the manner popularized by Victorian society. Circa 1900.

\$3000 - \$5000

1771

Marlin/Bremworth Carpets machine knotted floor rug. 'Queenstown' NZ'

\$400 - \$600

1772

Axminster/Harewood Carpets machine knotted floor rug
New Zealand map with border variants of the Opihi taniwha and a kowhaiwhai pattern

\$400 - \$600

1773

Frank Barnes
SS Rimutaka, Passing the Eddystone (Moonlight)
oil on board
signed and entitled, c.1905

\$400 - \$600

1774

James Elder Moultray
Sailing Ship off the Otago Heads
oil on board
signed

\$800 - \$1500

1775

Artist unknown

SS Kanowa, Hospital Ship, English Channel.

Oil on board, signed with initials AC, inscribed with title, London and dated 1915. In original oak frame. The Aust United Steam Navigation Co steamer was active from 1903 - 1920 and during World War I was used as Transport and as a hospital ship during the Gallipoli campaign.

\$600 - \$800

1776

New Zealand [Crum] Brick Co. (New Lynn) salt glazed jardinière and saucer. Modelled as a rough barked tree trunk with pruned protruding branches. Scalloped rimmed. c.1910 - 20s

\$350 - \$500

1777

Carder Bros & Co salt glazed chimney pot. Of two pipe sections luted to produce a hooded top. The double aperture top with serrated cut rims. Impressed mark: carder Bros., Ponsonby & Hobsonville.

\$750 - \$1000

1778

Pair of red clay square section horse water troughs. Marked Carder Bros, Ponsonby & Hobsonville, Auckland. Made to site either side of a building's entrance steps. The only extant pair known

\$1500 - \$2000

1779

Massive RO Clarke, Hobsonville, salt glazed, three chamber grease trap

\$1000 - \$1500

1780

Carder Bros drab olive salt glazed, square mouthed and bodied sump.

\$400 - \$600



1776



1770

1781

Clarke's Patent large shallow, circular gully trap. Only example known. Possibly a prototype

\$300 - \$500

1782

Salt glazed clay house pile, square section. Marked Carder Bros & Co, Auckland

\$80 - \$120

1783

A taller house pile as above

\$100 - \$150

1784

Red clay, circular rolled rimmed chimney pot. Marked NZ Brick Co., New Lynn.

\$200 - \$300

1785

Yellow clay, circular rolled rimmed chimney pot. Marked Drury, Fire Clay Works, Auckland

\$200 - \$300

1786

Tapering cylindrical chimney pot with two encircling ribs. Marked Carder Bros., Ponsonby & Hobsonville, Auckland.

\$400 - \$600



1771



1774



1773



1772



1775



1777

1787
Tall, yellow clay, octagonal section chiney pot with ogee mouldings at the mouth. Marked G Boyd, Ponsonby, along with a cylindrical chimney extension section.
\$500 - \$800

1788
Tall, red clay, tapering cylindrical chimney pot. Marked Winstones, Taumaranui. An unusual and rare mark
\$500 - \$700

1789
Small, red clay, tapering chimney pot. Marked Drury, Fire Clay Works, Auckland
\$150 - \$200

1790
A selection of George Boyd bricks with decorative mouldings from a fireplace surround
\$150 - \$250

1791
Two piece gully trap, glazed red clay. The square mouth piece marked Murphy, Wellington
\$200 - \$300

1792
Salt glazed gully trap. Marked NZ Brick Co., New Lynn
\$150 - \$200

1793
Large JW Ockleston & Co, Hobsonville, Auckland sump. (Neighbours of Clarkes and bought out by the same, a rare mark)
\$200 - \$400

1794
7 ½" pipe section. Marked J Carder, Waitamata Pottery, Auckland. circa 1870. Rare early Carder mark
\$100 - \$200

1795
Clay roof ridge terminal tile with large decorative curlicue
\$50 - \$100

1796
Short, salt glazed chimney pot, everted circular rim, flaring body. Marked Crum New Lynn
\$200 - \$300

1797
Octagonal salt glazed chimney pot with louvred venting at the mouth. Marked NZ Brick Co., New Lynn
\$400 - \$600

1798
Large (5 gallon) NZ Brick Co., New Lynn crock, with handles to the sides, salt glazed red clay. Turned wooden lid. Unmarked
\$200 - \$250

1799
Large (3 gallon) NZ Brick Co., New Lynn crock. Turned wooden lid. Marked under base
\$175 - \$225

1800
4 gallon salt glazed crock. Marked Carder Bros, Posnsonby, Auckland (unusual mark)
\$400 - \$500

1801
Salt glazed yellow clay campana garden urn moulded with acanthus leaves. Unmarked but possibly Crum/NZ Brick Co. Circular footed base
\$500 - \$700

1802
Salt glazed yellow clay campana garden urn moulded with acanthus leaves. Unmarked but possibly Crum/NZ Brick Co. Square footed base
\$500 - \$700

1803
McSkimmings (Sanitary ware makers) slip cast large campana urn with simulated agate glaze finish. Two piece. Printed mark to base.
\$500 - \$700

1804
Salt glazed yellow clay 'homer' salt box. Incised SALT. Dated and monogrammed JL under base
\$100 - \$150

1805
Attributed NZ Brick Co. (New Lynn) salt glazed jardinière. Modelled as a rough barked tree trunk with pruned protruding branches.
\$100 - \$150

1806
A similar jardinière with lighter glaze
\$100 - \$150

1807
Attributed NZ Brick Co basket vase. Modelled as a rough barked tree trunk with naturalistic branch handle (faulted)
\$100 - \$150

1808
Attributed Crum Brickworks 'homer' jardinière of light salt glazed pipe section with serrated rim and fluted and rondel decorated walls
\$150 - \$200

1809
Attributed NZ Brick Co 'homer' jardinière. Tapered cylindrical shape as a rough barked tree trunk with protruding braches
\$150 - \$250

1810
James Royce & Co Coffee and Tea Merchants, Auckland advertising, brick shaped, dog's water trough. Impressed to the sides with 'Friendship Brand Fine Coffee For Master; Fresh Water For Me. To the opposite side Royce Tea for master; Fresh Water For Me. Inside: Property of James Royce & Co Ltd Auckland
\$500 - \$1000

1811
Ceramco 50 Years 1929 – 1979 commemorative desk piece – S - bend gully trap model, raised on wood plinth
\$100 - \$150

1812
Ceramco 50 Years 1929 – 1979 commemorative desk piece – straight pipe section model, raised on wood plinth
\$75 - \$100

1813
Extremely rare spaniel dog door stop made by Albert Crum (at NZ Brickworks) c.1910. A similar dog illustrated in 'Fire In The Clay' Dick Scott, p.169
\$400 - \$500

1814
Unusual terminal brick with high relief gargoyle - like Maori weku head with protruding tongue, cast to one end.
\$100 - \$220





1797



1799



1800



1809



1803



1807



1801



1816



1815

1815
Naïve Art/Model 1960s tandem wheel caravan.
In period livery – tangerine, cream and mocca.
Aluminium roofed and with fitted interior with
period wallpaper and fabrics.
\$1000 - \$2000

1816
Carved wooden folk art bust of a miner
Provenance: Purchased by Jim Drummond
in the 1990s. Originally obtained by a former
employee of one of the Waikato's coal mines on
the closure of the mine.
\$2000 - \$3000

1817
Turned native timber vase. Painted with a Maori
maiden in a mountainous river landscape beside
tree ferns.
\$200 - \$300



1818

1818
Turned wooden plate, pokerworked and stained
with a portrait of a wahine with poi slung
over her shoulder with a stylized geometric
kowhaiwhai patterned border
\$200 - \$300

1819
Spherical turned wooden vase, pokerworked
and stained with a portrait of a wahine with
a stylized geometric kowhaiwhai patterned
border
\$150 - \$200

1820
Folk art painting of the "Aquitania" by 'Captain'
Lawrence Adair. Oil on board. Entitled and
signed. Inscribed verso: Original, Aquitania,
45,647 tons, and additional details along with:
Painted at Adair's Marine Cabin, Bethell's Road,
Swanson.
Ref: Fire on the Clay, Dick Scott, pp 154 – 157
\$2000 - \$3000

1821
Folk art painting in shell applied horseshoe frame.
Oil on plywood. The 'Pamir' Inscribed verso:
Pamir in Moonlight... Made and Completed at
the Marine Work Cabin, Bethells' Road, Swanson,
NZ
\$400 - \$600

1822
Folk art wall plaque, modelled with a shell
appliqué plywood rooster. Inscribed "Can't
Crow, Too - oo Old, Just Scratchin on Pension.
4 Score Months (sic) I Be This Coming Day.
Inscribed verso Made at Adairs' Marine Cabine,
Bethell's Road, Swanson, NZ
\$300 - \$400



1840

1823
Folk art wall plaque "Queen Mary" painted on plywood in horseshoe shaped frame with shell appliqué. Signed and entitled. Inscribed verso Designed and Completed at the Marine Cabin, Bethell's Road, Swanson, NZ
\$400 - \$600

1824
Folk art shell encrusted money box cottage. Inscribed underneath: Original, Adair's Marine Cabin, Bethells' Road, Swanson
\$600 - \$1000

1825
'Captain' Lawrence Adair. RMS Tahiti. Oil on board. Signed and entitled. Inscribed verso with ships details and: All done by L Adair, Marine Work Cabin, Bethell's Road, Swanson, NZ
\$300 - \$400

1826
'Captain' L Adair (Popeye Beavis) folk art turned wood, painted and shell encrusted vase. Painted in two panels with the ships 'Nairana' and 'War Lord' Bearing the alternative Adair signature L Beavis
\$600 - \$800

1827
'Captain' L Adair (Popeye Beavis) folk art turned wood, painted and shell encrusted circular box. Painted with the ship 'Queen Elizabeth and Bearing the alternative Adair signature L Beavis. Inscribed underneath: Painting and shell work by Popeye, Orewa. And signed L Beavis
\$400 - \$600

1828
'Captain' L Adair (Popeye Beavis) folk art turned wood, painted circular tea pot stand. Painted with the epithet: Tea Pot Calling, Ass Over Heated' Coming In to Unload. Bearing the alternative Adair signature L Beavis underneath. And inscribed : Transblue & Hogan by Popeye Orewa, signed L Beavis
\$100 - \$150

1829
'Captain' L Adair folk art model submarine. Unmarked but with signature metalwork and lead weight.
\$300 - \$500

1830
'Captain' L Adair folk art model single funnel merchant ship. Unmarked but with signature metalwork and lead weight.
\$300 - \$500

1831
Folk art souvenir plaster plaque commemorating the Sea Devil – Graf von Luckner, moulded in relief with his ship.
\$100 - \$150

1832
Folk art rewarewa cribbage board modelled as a battleship, Cribbage pins form the deck guns barrels.
\$150 - \$200

1833
Folk art carved wooden figure of a seated military officer. His uniform with brass nail head buttons, his face white painted with pink cheeks.
\$300 - \$400

1834
Pair of small table lamps made of helmet shells, cut away and painted to the interiors with sea scenes.
\$50 - \$100

1835
Pair of Victorian shell appliqué framed hand mirrors, with hangers to wall mount
\$200 - \$250

1836
Pair of turned wood souvenir wall plaques" Mitre Peak and Mt Egmont signed verso by L Hollobon.
\$125 - \$200

1837
Carved wood theatrical/ethnographical inspired wall mask. Label attached df Studio Havelock North
\$200 - \$300

1838
Tin and wood model of an electric tram Auckland Transport Board 182. With advertising panels for Ted Pascoe's Meat and destination boards for Mt Roskill and Wellesley Street East. L.530mm
\$1000 - \$2000



1839
Large tin advertising sign (1 x 2.2metres) double sided :The Corned Beef King, Balmoral, For Finest Quality Meat at Lowest Prices' flanked by pictures of the cartoon characters Maggie and Jiggs
\$1000 - \$1500

1840
A fine timber Masonic secrets box. With complex locking mechanism including rotating and shooting bolts actioned by motion of the Masonic symbols on the lid. Further secret draws are released internally by various actions. The box enclosed within a unique glazed cabinet. Various timbers including satinwood, walnut, ebony and mahogany along with ivory inlays.
\$1000 - \$1500

1841
Tin lunch box with applied shells to all surfaces.
\$80 - \$100

1842
Ataahua brand NZ native timbers and paua shell inlaid trinket box
\$50 - \$75

1843
Matchstick Maori meeting house. With maihi and rafters made of tongue depressors, painted with colourful kowhaiwhai patterns
\$200 - \$300

1844
Matchstick model house. The roof lifting to reveal individual rooms. Entirely constructed of matches excluding the Perspex windows
\$300 - \$400

1845
Match stick appliquéd coffee table with three legs also sheathed in matches
\$200 - \$300

1846
Pair of carved kauri gum heads of a Maori man and woman both with pen drawn moko
\$500 - \$600

1847
Carved kauri wall plaque of a manaia, with paua inlaid eyes. Inscribed verso Carved by R Parker - Hill Snr 1951 - 52
\$200 - \$300

1848
Solid mottled totara shield shaped framed barometer
\$150 - \$200

1849
Black and red painted carved Maori design trinket box
\$100 - \$150

1850
Carved wood kotiate hand club with manaia head as the butt knob and weku head to the lower blade quadrants.
\$300 - \$500

1851
Maori carved wood ashtray inset with a whole paua shell
\$70 - \$100

1852
Lee Enfield 303 stock carved with Maori figure and patterns.
\$200 - \$300

1853
Carved kauri trinket box by Rangī Stevens. With a weku head to the hinged lid.
\$200 - \$300

1853a
'Marble Art' cast ochre coloured figured lamp base - wahine and children
\$200 - \$300

1853b
'Marble Art' cast black coloured figured lamp base - wahine and children
\$200 - \$300

1854
Carved Maori inkstand with single glass well flanked by two heads whose protruding tongues form the pen rest
\$350 - \$450



1855
Five pokerworked and dyed suede souvenir satchels, albums etc

1856
Carved wood Maori meeting house fascia to accept either a clock or barometer
\$200 - \$250

1857
Carved kauri trinket box with Maori weku head to the hinged lid
\$100 - \$200

1858
Carved kauri ngututa head, with affixed details of the carver Denis Conway verso
\$70 - \$100

1859
Small stained kauri carved box by Rangī Stevens with a weku head to the lid
\$100 - \$120

1860
Dark stained lozenge shaped tray with Maori carving in low relief. A weku head to the centre framed by various spirals
\$300 - \$400



1861
Folk art Maori carved inkstand and pencil box
\$100 - \$150

1862
Folk art totara clock or barometer frame, carved with Maori motifs flanking the vacant circular mechanism hole.
\$200 - \$250

1863
Moulded timber barometer with Maori motifs
\$40 \$60

1864
Maori taiaha with uncarved tongue and head. L.1600mm.Y6117
\$500 - \$1000

1865
Carved folk art taiaha with unusual carved figural terminal to the blade end. L1600mm
\$300 - \$500

1866
Mountaineering ice axe once belonging to Anton Coberger.
\$600 - \$800

1867
Sterling silver and enamel replica of the Queen's baton, from the XIV Commonwealth Games, Auckland 1990. On wooden plinth base
\$800 - \$1200

1868
Folk art tokotoko carved with a weku head to the handle. L.870mm
\$200 - \$400

1869
Greenstone amulet with worked groove along with the lower section of a nephrite hei tiki
\$300 - \$500

1870
Small bowenite hei tiki. Broken base.Y5849
\$175 - \$300

1871
Whalebone hei tiki with circular disc paua shell inset eyes, circa 1930s
\$300 - \$500

1872
Maori carved pipe, the bowl with weku head and spiral carving.Y9662
\$600 - \$900

1873
Large quadrangular greywacke tiki.Y8177
\$200 - \$300

1874
Muka and kiwi feather kete, with some losses of feathers. 280 x 200mm.Y8315
\$1600 - \$2000

1875
Tobacco pipe with carved portrait bowl marked 'Kia - Ora' Special..The bowl carved as a monocle wearing gentleman. Sterling ferrule.
\$300 - \$400

1876
'Marble Art' cast resin table lamp base, modelled as a man and wahine seated in a waka
\$150 - \$250

1877
'Marble Art' cast black resin figured lamp base, modelled as a Maori chief and wahine. Original period lampshade.
\$250 - \$350

1878
Pacific Islands chief's stool. 19th century, carved from a single piece of timber; the gently curved seat raised on four legs with pad feet
\$3000 - \$5000

1879
Small section of tukutuku paneling
\$100 - \$200

1880
Carved kauri model river waka. Carved adornment to the gunwale section on one side only, of manaia and recumbant tiki figures
\$1500 - \$2500

1881
'Marble Art' cast black resin lamp base 'Rangitira' with original label attached and period lampshade
\$250 - \$350

1882
Aluminium 4 pint electric kettle with cast brass feet modelled as tekoteko figures
\$200 - \$300

1883
Carved wooden Maori folk art lamp base, in the form of a tekoteko figure.
\$300 - \$500

1884
Carved Rotorua school maori folk art lamp base, in the form of a manaia, holding a patu
\$300 - \$500

1885
Small candlewick and feather cape, early 20th century.
\$400 - \$600

1886
Miniature kete, plain and stained muka
\$50 - \$100

1887
Jim Beam ceramic decanter as Te Rauparaha
\$200 - \$300

1888
Jim Beam ceramic decanter as Hone Heke
\$200 - \$300

1889
Caroline Islands coconut grating stool
\$800 - \$1200

1890
Cast concrete fence post as a Maori tekoteko
\$200 - \$400

1891
'Marble Art' resin Pania of the Reef lamp base
\$250 - \$300

1892
'Marble Art' cast black resin warrior lamp base
\$200 - \$250

1893
'Marble Art' cast ochre coloured ancestral figure lamp base
\$300 - \$500

1894
'Marble Art' cast black coloured poutokomanawa lamp base
\$300 - \$500

END OF THE DRUMMOND SALE

DECORATIVE ARTS AND
THE NEW ZEALAND SALE
thursday 14 may 6.30pm
3 abbey street, newton auckland

VIEWING

friday	8 may	9am – 5pm
saturday	9 may	11am – 4pm
sunday	10 may	11am – 4pm
monday	11 may	9am – 5pm
tuesday	12 may	9am – 5pm
wednesday	13 may	9am – 12noon

OF INTEREST...

items from the sir henry buckleton estate	lot 75 -166
a wwii ensign from the surrender of the japanese	lot 24
folk art by jane brenkley	lots 28 - 31
conditions of sale	page 78
absentee bid form	page 79
contacts	page 80

1
Rare shaped Crown Lynn vase. Ovoid shape with short neck, moulded flowers at the shoulder; uniformly ribbed walls. Dark brown treacle over golden yellow glaze. Impressed no.85 and fractional numbers
\$250 - \$300

2
Crown Lynn bottle vase.
Incipient handles to the shoulder; ribbed trumpet neck. celadon glazed. Incised fractional numbers
\$100 - \$150

3
Crown Lynn biscuit blank enamel painted finish by Royal Oak Potteries in pastel bands. Shape 36, medium size
\$150 - \$200

4
Crown Lynn, Daniel Steenstra hand crafted series ovoid vase decorated on a treacle brown ground with brush point black floral designs
\$250 - \$500

5
A Crown Lynn wall vase, mottled ochre glaze, shape 8
\$100 - \$150

6
A Crown Lynn wall vase, mottled ochre glaze, shape 8
\$100 - \$150

7
A Crown Lynn slip cast vase, matt white shape 86
\$125 - \$175

8
A Crown Lynn spherical vase with mottled green glaze, shape 36
\$80 - \$120

9
A Crown Lynn spherical vase with mottled green glaze, shape 36
\$80 - \$120

10
Crown Lynn bottle vase.
Incipient handles to the shoulder; ribbed trumpet neck. Mottled turquoise glazed. Shape 56
\$100 - \$150

11
A Crown Lynn green glazed wall vase, shape 8
\$80 - \$120

12
Crown Lynn, Ernest Shufflebotham pedestal bowl, shape 54
\$200 - \$300

13
Ernest Shufflebotham for Crown Lynn hand - potted vase, shape 3, large cylindrical shape with lathe turned banding to the top section. h.240mm
\$500 - \$800

14
Ernest Shufflebotham for Crown Lynn hand - potted vase, shape 3 cylindrical shape with lathe turned banding to the top section. h.170mm
\$300 - \$500

15
Ernest Shufflebotham for Crown Lynn hand - potted vase, shape 3, small size cylindrical shape with three lathe turned bands to the top section. h.130mm
\$200 - \$300

16
Ernest Shufflebotham for Crown Lynn hand - potted vase, shape 5 ovoid shape on a spreading foot, with lathe turned bands to the upper section h.180mm
\$300 - \$500

17
Ernest Shufflebotham for Crown Lynn hand - potted vase, shape 5 ovoid shape on a spreading foot with lathe turned bands to the upper section. h.130mm
\$200 - \$300

18
Ernest Shufflebotham for Crown Lynn hand - potted vase, shape 9, ovoid shape. h.160mm
\$300 - \$500

19
Ernest Shufflebotham for Crown Lynn hand - potted vase, shape 47, with banding to the foot and upper section. h.180mm
\$300 - \$500

19a
Ernest Shufflebotham for Crown Lynn hand - potted vase, shape 18 beaker vase with banding to the upper section. h.130mm
\$200 - \$300

20
Ernest Shufflebotham for Crown Lynn hand - potted vase, shape 18 beaker vase with banding to the upper section. Small hairline h.160mm
\$200 - 400

21
Ernest Shufflebotham for Crown Lynn hand - potted vase, spherical body with lathe turned banded decoration. h.130mm
\$250 - \$350

22
A New Zealand made Tink - E toy racing car
\$50 - \$80

23
A Pair of Bookcases constructed from timber from the Boyd convict ship after the massacre in 1809. Each 780 x 560mm
The Boyd Massacre took place, when local Maori killed 66 people at Whangaroa, in revenge for the crew's whipping a Maori chief's son for refusing to work
Provenance: From the estate of Sir Henry Buckleton. The bookcases were constructed by Sir Henry Buckleton
\$500 - \$1000



24

A rare and important signed Ensign from the New Zealand battle cruiser HMNZS GAMBIA together with two pennant flags, the 1944 Christmas menu printed on card, a cloth patch, and two commemorative certificates and a colour photograph of the vessel at sea. After serving in the Atlantic the HMS GAMBIA joined the British fleet at Trincomalee, Ceylon in February 1944. From April to July the cruiser took part in operations against Japanese bases in the East Indies. At the end of the war in August 1945 the Gambia was stationed off the coast of Japan. The Gambia represented New Zealand at the surrender of Japan in Tokyo Bay on September 2nd 1945. The ensign signed by numerous crew members and inscribed HMNZS Gambia Tokyo Bay September 2nd 1945. Size 700 x 1400mm. Provenance: Given to the current owner by D. J. Hansen a crew member who was present at Tokyo Bay in September 1945. \$4000 - \$8000



26

A mottled kauri colonial jewellery box with removable interior rewarewa tray. VV. 330 \$400 - \$800



25

A burr totara colonial apprentice chest, the top drawer with two separate fascia's above two full width drawers. VV. 300 H. 280 mm \$800 - \$1200



26a

A carved post with two portrait busts - by I Whyman, dated 1971 and inscribed: Typical moko (tattoo) chiefly male, noble female. h.980mm \$1000 - \$2000

27

A New Zealand colonial Anton Seuffert card table. The circular parquetry top with thumb moulded edge centred by a starburst pattern on a basket weave ground framed by an interlocking geometric pattern rendered in kauri, rimu, matai, rewa rewa, and numerous other native timbers. The underside of the top with original Anton Seuffert label. Raised on a later associated rewa rewa base with inlaid native timbers to the circular lower section on three splayed legs. A similar example illustrated page 115 "The Seuffert Legacy" by Brian Peet. D 620 \$20,000 - \$30,000



28

A folk art kauri jewellery box by Jane Brenkley. The top panel carved with a large central manaia flanked by two smaller figures set in a ground of deeply carved scrolling spirals. The side and front panels with wheku and scrolling foliage inlaid with shells and paua. The underside of the lid painted and decorated in pokerwork with a river scene and inscribed 'Though loving thoughts are left unsaid too often through the year; each day you're thought of Lovingly and proudly mother dear! Something for dearest mother; sweeter by far than any other.' Signed Jane Brenkley and dated 1954 w.330 h.130mm \$1800 - \$3000

29

A good folk art occasional table by Jane Brenkley. The top carved and painted with a Maori family and dogs in the foreground of a landscape with a whare in the background. The pedestal carved as a Tekoteko figure raised on a carved circular base. Signed and dated to the top 1943 Cf. Two similar examples sold by A+O lot 257 November 2007 and lot 297 25th June 2008. This is a superior example with more resolved carving to the top, pedestal and base w. 450, h. 550mm \$5000 - \$7000

30

A Jane Brenkley folk art carved and painted portrait plaque of a Maori chief with facial moko wearing a Kapu pendant. 290 X 190mm \$1000 - \$1500



31

A pair of large impressive folk art vases by Jane Brenkley. Each of ovoid shape. One carved and painted with a portrait bust of an elderly Maori chief with facial moko wearing a kapeu pendant the other with an elderly Maori woman with moko to the chin smoking a pipe. Each signed and dated 1945. h.410mm \$1800 - \$3000

32

An unusual folk art longcase clock constructed entirely from matchsticks the movement with hand made wooden cogs. circa 1940 \$1500 - \$2000

33

A wakahuia carved by Hemi Taniere of Ngapuhi. The lid with central handle flanked by three manaia with inset paua eyes carved in high relief. The base with a central wheku flanked by manaia conforming with the lid. Registered Y13293 l.660mm h.280mm \$3000 - \$4000

34

A New Zealand Maori folk art lamp base carved in the form of a warrior holding a patu. h.420mm \$300 - \$500

35

A New Zealand folk art box carved with wheku heads and tiki figures inlaid with paua. w.330mm \$400 - \$800

36

A folk art tekoteko figure h.360mm \$50 - \$100

37

A folk art whare whakairo lidded box \$40 - \$80

38

A shell folk art mirror; the shells arranged to form a kiwi. D 580 \$350 - \$500



38A
A New Zealand tin scratch built model ship the
"SS Selwyn" L.500mm
\$600 - \$800

39
A folk art match stick side side table
\$30 - \$50

40
A New Zealand sterling silver bread fork with
nephrite handle.
\$100 - \$200

41
A jam spoon and butter knife with nephrite
handles in original case with retailer's label B.M.
Kessell, Hastings.
\$200 - \$300

42
Two folk art patu
\$40 - \$80

43
Temuka Pottery tobacco jar lid designed by TN
Lovatt and a slip cast Crown Lynn dog
\$100 - \$150

44
A Luke Adams teapot with ochre glaze
\$200 - \$250

45
A small Milton pottery pie dish 140 x 100mm
\$200 - \$250

46
A white McAlpine fridge Jug
\$100 - \$150

47
A New Zealand Arts and Crafts copper
jewellery box the top panel embossed with
whare and front panel inlaid with paua shell
\$50 - \$100

48
A New Zealand folk art carved magazine rack.
\$200 - \$300

49
A wooden shield carved with manaia in relief.
720 x 510mm
\$400 - \$600

50
A kauri souvenir carved by Wiremu Kutuheri as
a kiwi surmounting a log. h. 210 mm
\$400 - \$600

51
Two small souvenir kiwis surmounting logs
carved by Wiremu Kutuheri
\$200 - \$400

52
A pair of painted wooden circular wall plaques
depicting a Maori chief and chieftainess.
\$200 - \$300

53
A group of four Maori adze blades
\$200 - \$400

54
A folk art tekoteko figure with a folk art bowl,
and napking rings, egg cups etc.
\$50 - \$100

55
A Maori folk art tekoteko figure and seven
pieces of Maori souvenir ware.
\$50 - \$100

56
A Maori folk art bowl and nut cracker
\$20 - \$40

57
A folk art fire bellows painted and carved on a
poker work ground with a fantail on a branch.
\$50 - \$100

58
A pair of Parker Pottery, Lincoln Wines flasks
with moulded decoration of a tekoteko figure
with a reverse decoration of a manaia.
\$400 - \$600

59
A good 19th century New Zealand lithograph
depicting the Grey river gorge and Eastern part
of Greymouth Westland New Zealand
295 x 515mm
\$2000 - \$3000

60
A 19th century New Zealand lithograph by
Duncan White entitled 'View north east from
Conquest place Parnell' 270 x 520mm
\$1500 - \$2000

61
A 19th century coloured lithographic print from
Durmont D'Urville's Voyage of the Coquille
"Etablissement des Missionnaires Anglais a
Kidikidi". 240 x 330mm
\$1000 - \$1500

62
A 19th century coloured lithographic print from
Durmont D'Urville's Voyage of the Coquille
"Pirogue des Habitants de la Nouvelle - Zelande.
240 x 330mm.
\$1000 - \$1500

63
A 19th century lithograph by Louis Auguste
de Sainson, [1801-1887]. 'Plage de Lorora-reka'
[Nouvelle Zelande] 220 x 315mm
\$1000 - \$1500

64
A 19th century lithograph by Louis Le Breton
[1818-1886] 'Vue de l'obseratoire'
180 x 264mm
\$1000 - \$1500

65
Maori portrait charcoal drawing on paper by
R.L. Stevens titled 'Maku Koe Ka Oari Ai'.
530 x 430mm
\$200 - \$400

66
Maori portrait charcoal drawing on paper by
R.L. Stevens titled 'Ngakurapana, Ngapuni Chief'.
500 x 420mm
\$200 - \$400

67
Maori portrait charcoal drawing on paper by R.L.
Stevens titled 'Kapai te Paipai'. 530 x 430mm
\$200 - \$400

68
Maori portrait charcoal drawing on paper by
R.L. Stevens titled "Eruera Patuone" 640 x 500
\$200 - \$400

69
A New Zealand book plate lithograph
'Panoramic view of Port Lyttelton'
\$50 - \$100

70
A black and white White's Aviation photo
depicting Quay St, and the Auckland port area.
500 x 730mm.
\$200 - \$300

71
A panoramic photograph by R.P. Moore titled
Maori Pa, Rotorua, N.Z. In original oak frame.
930 x 180mm
\$500 - \$800

72
An early coloured photograph of Rotoura
looking out towards Mokoia Island
\$250 - \$350

73
Four New Zealand engravings and lithographs.
\$20 - \$30

74
A Te Maori exhibition calendar
\$50 - \$100



THE SIR HENRY BUCKLETON ESTATE COLLECTION

75

A Victorian walnut tea caddy of sarcophagus shape. The interior with three compartments complete with lids.
\$250 - \$350

76

A late 19th century camphor-wood mosaic box of sarcophagus shape, raised on four flat bun feet, some losses.
\$50 - \$100

77

Twelve pieces of Victorian ruby glass including bowls, jugs, salt cellars and small cups
\$150 - \$250

78

A Victorian ruby glass bottle, a sugar castor and three wine glasses
\$100 - \$200

79

An Edwardian sterling silver sovereign case. Birmingham, 1906.
\$50 - \$80

80

Two Edwardian fans, opera glasses, a mother of pearl and brass pill box and a thimble.
\$50 - \$100

81

A pair of 19th century Sheffield plate candlesticks, with embossed foliate decoration on a circular spreading foot.
\$80 - \$120

82

A pair of sterling silver vases, trumpet shape raised from a circular foot decorated in the Aesthetic manner with flowers reeds and grass. London, 1907. With impressed retailer's mark: W Littlejohn & Son, Wellington.
\$300 - \$400

83

A William IV period sterling silver goblet. London, 1832 by Jonathan Hayne.
\$100 - \$200

84

A sterling silver mug, Sheffield, 1892 by James Dixon and Sons.
\$50 - \$100

85

An Art Deco Katzhut porcelain model of a female skier, complete with original wooden skis, repair to the foot.
\$50 - \$150

86

Four Grimwades Bruce Bainsfather plates
\$180 - \$240

87

A Royal Worcester miniature coffee pot painted with peaches and blueberries by John Freeman.
\$300 - \$500

88

A Royal Worcester miniature cup and saucer, painted with fruit, together with a miniature side plate, a milk jug and sugar basin.
\$300 - \$500

89

A pair of Georgian painted portrait miniatures of a gentleman and lady, each in ebonised frames.
\$200 - \$300

90

A pair of 19th century portrait photographs in ebonised frames.
\$100 - \$150

91

A sterling silver rose bowl with pierced foliate border and lion masks with captured ring handles. Sheffield, 1946 by Walker & Hall, raised on a matching ebonised plinth.
\$600 - \$800

92

A pair of Edwardian candlesticks, each with an octagonal gun barrel column raised from a stepped beaded covetto base and with detachable nozzle with beaded rim. Sheffield, 1909 by Martin Hall & Co.
\$800 - \$1200

93

A 19th century sterling silver flatware service six Hanoverian pattern table forks and six luncheon forks, six old English table spoons, and five dessert spoons and one fiddle pattern dessertspoon. Mixed dates and makers
\$2500 - \$3500

94

A Georgian sterling silver caddy spoon London 1808 by John Sanders
\$80 - \$120

95

A Georgian sterling caddy spoon. London 1795 by Peter and Ann Bateman, faulted with crease indentations to the base of the handle together with Dutch caddy spoon missing the handle section
\$50 - \$100

96

A sterling silver fiddle pattern ladle 1817 by Robert Rutland together with a sterling silver table spoon

97

A Pair of Scottish sterling silver sugar tongs with shell shaped bowls. Edinburgh 1860 by WJ McDonald, together with another pair of sterling silver sugar tongs.
\$150 - \$250

98

Six assorted sterling silver teaspoons together with a salt spoon.
\$100 - \$200

99

Three sterling napkin rings and 17 assorted teaspoons.
\$100 - \$200

100

Sterling silver tea strainer with fault to the handle section, together with six cake forks.
\$50 - \$100



85



92

101
Twelve sterling silver teaspoons.
\$100 - \$150

102
A plated silver ladle, crumb tray and assorted plated silver.
\$50 - \$100

103
A cased set of twelve Harrods sterling silver cocktail sticks each surmounted by a pheasant
\$100 - \$200

104
A cased set of six Harrods silver gilt and enamel Art Deco coffee spoons
\$200 - \$300

105
A cased set of six Art Nouveau teaspoons, London, 1901 by William Comyns & Sons Ltd.
\$100 - \$200

106
A cased pair of sterling silver table salts.
\$50 - \$100

107
A sterling silver vase, pedestal bowl and two small dishes.
\$100 - \$200

108
An old Sheffield plate table coaster:
\$30 - \$50

109
A pair of 19th century Sheffield plate dome covers, each with foliate cast handle and gadrooned border:
\$200 - \$300

110
A bottle of vintage 'Le Cognac Salignac Grande Reserve', together in a presentation case with a cut crystal Baccarat decanter.
\$250 - \$350

112
A section of eight assorted French cut crystal wine glasses with green and red tinted bowls.
\$200 - \$300

113
A painted portrait miniature on ivory of a lady in 19th century attire, wearing a pearl necklace. Signed N. Pottinger; in an ebonised frame.
\$100 - \$200

114
A Mason's ironstone jug. Bible pattern.
\$50 - \$100

115
A pair of Victorian table salts with replaced blue glass liners.
\$80 - \$120

116
An Art deco black marble mantel clock.
\$80 - \$120

117
A glass perfume bottle with silver top surmounted by a dog finial, together with a toilet bottle with gilt brass top and a compact with enamel top and a pill box.
\$100 - \$200

118
A 19th century sterling silver Stilton cheese scoop, with ivory handle. Sheffield, 1864, by the Harrison brothers.
\$1200 - \$1500

119
A cut glass pedestal dish.
\$100 - \$150

120
A Georgian style cut glass decanter; small chip to underside.
\$50 - \$80

121
A good quality Georgian style cut glass claret jug.
\$200 - \$250

122
A moulded glass rummer.
\$50 - \$80

123
Two early 19th century sherry glasses.
\$40 - \$60

124
Five Victorian green tinted wine glasses.
\$180 - \$240

125
Six Victorian green tinted wine glasses.
\$200 - \$250

126
A pair of late Victorian Mary Gregory style green glass jugs.
\$150 - \$200

127
A Georgian silhouette portrait of a gentleman.
\$50 - \$100

128
A cased sewing kit comprising two pairs of scissors with chased handles and a thimble.
\$80 - \$100

129
A sterling silver trophy cup with acanthus capped handles. London, 1937 by the Goldsmith's and Silversmith's Company. h.240mm
\$200 - \$300

130
A Royal Doulton vase, hand-painted with fuchsia flowers. h.150mm.
\$300 - \$600

131
A Royal Mint, United Kingdom coin collection struck in 22 carat gold comprising: a two pound coin, a sovereign and a half sovereign, issued in 1983. Complete in original Royal Mint presentation case.
\$800 - \$1200



132
A cased set of sterling silver cocktail skewers the finials modelled as Dickensian characters.
\$200 - \$400

133
A group of eight sterling silver napkin rings.
\$100 - \$200

134
A sterling silver vesta case.
\$50 - \$100

135
A pair of Elkington silver plate candlesticks
\$150 - \$250

136
A pair of Sheffield plate candlesticks
\$200 - \$300

Artwork

137
Archibald Nichol
Portrait of Sir Henry Buckleton
oil on canvas
signed
900 x 700mm
\$800 - \$1400

138
Ernest William Christmas
Farmyard scene
watercolour
signed
360 x 240mm
\$400 - \$600

139
Ernest William Christmas
Bridge over a river
watercolour
signed
380 x 260mm
\$400 - \$600

140
Gwyneth Richardson
Vine Cottage
watercolour
signed
180 x 250mm
\$800 - \$1200

141
Charles Howorth
Anne Hathaway's Cottage
watercolour
signed
270 x 360mm
\$400 - \$600

142
Blythe Fletcher
Cows beside a River
signed.
360 x 490mm
\$500 - \$800

143
Ted Kindleysides
Abstract cityscape
oil on board
signed and dated 1964
430 x 860mm
\$400 - \$600

144
A 19th century mahogany wine table, the later replaced circular top raised on a central pedestal, on three scroll legs terminating in pad feet. d.800mm
\$600 - \$1000

145
An Edwardian mahogany folding campaign table.
\$150 - \$250

146
A mahogany side table, raised on a central pedestal from a circular base, together with a matching smaller table.
\$300 - \$400

147
A pair of Victorian gentleman's and lady's parlour chairs, each raised on cabriole legs terminating in white porcelain castors.
\$800 - \$1200

148
An Edwardian Sheraton Revival display cabinet, with glazed panelled doors raised on square section legs, w.1160mm, h.1680mm
\$800 - \$1200

149
A Victorian mahogany mirror back sideboard. . The lower section with central drawers flanked by cupboards, w.1800mm h.1800mm
\$1000 - \$2000

150
A Georgian mahogany satinwood inlaid corner cabinet with astragal glazed door, h.1100mm
\$800 - \$1200

151
A 19th century drop side table raised on turned fluted legs.
\$250 - \$400

152
A Victorian figured mahogany sewing table, raised on barley twist legs united by a barley twist stretcher, w.630mm h.730mm
\$800 - \$1200

153
A Victorian tapestry top stool.
\$50 - \$80

154
A pair of Edwardian Sheraton Revival armchairs, with pierced back splats inlaid with satinwood, each raised on cabriole legs.
\$600 - \$800

155
A 19th century drop side table raised on turned fluted legs.
\$250 - \$400

156
A Victorian figured mahogany sewing table, raised on barley twist legs united by a barley twist stretcher, w.630mm h.730mm
\$800 - \$1200

157
An early kauri colonial rocking chair:
\$400 - \$800

158
An oak Georgian style fall-front bureau, with two small drawers above two full width drawers.
\$400 - \$800

158a
An Art Deco bedroom suite in black walnut, comprising a double bed head and foot board, a manrobe, dressing table, stool and pair of bedside cabinets. Purchased from Kirkcaldie & Staines in Wellington in 1945.
\$600 - \$1000

159
A 19th Century apprentice William IVth style supper table.
\$100 - \$200

160
A large 18th century style decoratively painted Italian armoire, with three central drawers flanked by cupboards, w.3400mm
\$3000 - \$5000

161
A Louis XV style cherry wood parquetry bombé commode, with green marble top above three full width drawers with gilt handles, raised on cabriole legs on sabot feet, w.1300mm.

162
A 19th century French gilt overmantel mirror, 1400 x 1030mm
\$1800 - \$2600

163
A Louis XV style four piece salon suite with canapé and fauteuil and two side chairs upholstered in a floral embossed velour
\$1200 - \$1800

164
A 19th century neoclassical bevelled edged gilt framed mirror:
\$500 - \$800

165
An Art Deco René Lalique opalescent and blue tinted scent bottle, of square form embossed with swallows in flight. Intaglio mark to the base
\$500 - \$800



165

166
A crystal Lalique decanter 'La Femme' pattern.
\$500 - \$800



167

167
A rare Clarice Cliff Bizarre Inspiration Caprice pattern conical bowl. The bowl raised from a circular foot painted in shades of blue, violet and indigo on a rich turquoise ground. Printed factory marks to the base. d.230mm
\$4000 - \$6000

168
A Poole Aegean dish pattern number 57
d.260mm
\$125 - \$175

169
A Tudric pewter Archibald Knox design coffee
pot with milk jug and sugar basin.
\$700 - \$1000

170
A large and impressive Swedish Orrefors cut
crystal bowl, original wooden plinth.
\$400 - \$600

171
An eight place setting Gino Versace design
dinner service including coffee service.
\$1500 - \$2000

172
An Arts and Crafts folk art cuckoo clock, relief
carved with figures of a Quaker-style man and
woman.
\$200 - \$300

173
A set of five Keith Murray small green glazed
cups raised on tapering conical stems.
\$200 - \$300

174
Keith Murray for Wedgwood high shouldered
tapering conical matt green vase. Shape
3805 Keith Murray facsimile signature mark
h.280mm.
\$2000 - \$3000



175
Keith Murray for Wedgwood high shouldered
tapering conical matt blue vase. Shape 3805.
KM printed mark, h.280mm.
\$2000 - \$3000



176
Keith Murray matt straw tankard.
\$180 - \$240

177
Keith Murray for Wedgwood matt white bowl
with lathe turned bands to the foot and top rim,
Shape 3806. KM printed mark. d.200mm.
\$800 - \$1200

178
Keith Murray for Royal Brierley crystal tapering,
conical vase with etched decoration in the form
of a swimming fish.
\$1800 - \$2600

179
A Burslem H. J Wood Art Deco jug painted in
blue, black green and yellow. h.330mm
\$80 - \$120

180
A John Crichton designed copper backed plate
with mosaic tile decoration in predominant
shades of blue, green and brown. Original label
to base. d.270mm
\$400 - \$600

181
A John Crichton designed copper backed plate
with mosaic tile decoration in predominant
shades of yellow, green and white. d.270mm
\$400 - \$600

182
A John Crichton designed copper backed plate
with mosaic tile decoration in predominant
shades of turquoise and white. d.270mm.
\$400 - \$600

183
A John Crichton designed copper backed plate
with mosaic tile decoration in predominant
shades of black, gray and brown. d. 270mm.
\$400 - \$600

184
A John Crichton designed copper backed plate
with mosaic tile decoration in predominant
shades of turquoise, green and white. Original
label to back.
\$400 - \$600

185
A John Crichton designed copper backed bowl
with mosaic tile decoration in predominant
shades of brown, beige and turquoise. d.190mm
\$200 - \$300

186
John Skeaping for Wedgwood model of a deer
in matt white.
\$300 - \$500

187
An Arts and Crafts Ashworth lustre vase.
\$40 - \$60

188
A Crocodile skin Art Deco period dressing
case.
\$200 - \$300

189
A WMF Persian style plated silver jug
\$200 - \$250

190
A WMF brass and copper spirit kettle.
\$135 - \$175

191
A WMF brass and copper spirit kettle.
\$135 - \$175

192
A Minton's vase decorated with a peacock,
faulted.
\$40 - \$80

192a
A sterling silver Arts & Crafts brooch by Edith
Morris in the form of a Tudor rose, rose hips
and leaves
\$1500 - \$2000



BRONZES AND RELATED ITEMS FROM AN INTERIOR DECORATOR RELOCATING

193

A fine bronze sculpture of a kangaroo by Rick Lewis, on a marble base, raised on a stepped mahogany plinth. Signed to the base. h.300 w.440mm
\$750 - \$1500



194

A fine bronze sculpture of two pheasants by Rick Lewis, one modelled in flight the other perched on a branch, raised from a naturalistically rendered bronze base. Signed. w.490 h.280mm
\$2000 - \$3000

195

A circular side table with bronze cast base in the form of angel fish. d. 600, h. 580mm.
\$900 - \$1200

196

A bronze model of a horse leaping a fence. w.350, h. 490mm
\$900 - \$1300

197

A bronze cast figure of 'Winged Victory'. The Greek goddess modelled holding a partially clad male figure aloft, raised on a circular marble plinth. h.700mm.
\$1000 - \$1300



198

A bronze cast model of a fairy seated feeding two birds on a stepped marble base. w. 230 h.500mm
\$900 - \$1300

199

A Tiffany-style lamp with green resin relief moulded base in the form of three peacocks, with multi coloured leaded-glass shade. h.700, w. 540mm.
\$600 - \$800

200

A Tiffany-style lamp with green resin relief, moulded base in the form of three peacocks, with multi coloured leaded-glass shade. h.700 w.540mm.
\$600 - \$800

201

A Tiffany-style lamp naturalistically rendered in the form of lilies with leaded-glass shades. h.500, w.250mm.
\$600 - \$800

202

A Tiffany-style bronze floor lamp rendered naturalistically in the form of twelve lilies with leaded-glass shade on a twisted pedestal. h.1400mm
\$1500 - \$1800

203

A Tiffany-style bronze floor lamp rendered naturalistically in the form of twelve lilies with glass shade on a twisted pedestal. h.1400mm.
\$1500 - \$1800

204

A Tiffany-style moulded cast bronze lamp in the form of a hot air balloon with multi coloured leaded-glass shade. h. 560, d.160mm.
\$600 - \$800

205

A Tiffany-style lamp naturalistically rendered in the form of water lilies and a leaded-glass shade. h.690mm.
\$450 - \$600

206

An impressive Tiffany-style table lamp of large size with leaded-glass shade in the form of roses. h.1100mm.
\$1250 - \$1800

207

A Tiffany-style lamp with bronze base cast in the form of two standing frogs with multi coloured glass-leaded shade. h.730mm.
\$700 - \$900

208

A Tiffany-style lamp with bronze base cast in the form of two standing frogs with multi coloured glass-leaded shade. h.730mm.
\$700 - \$900

209

A large stainless steel cast model of the 'Titanic', raised on a stainless steel and wooden stand. h.400, w.1250mm.
\$300 - \$500

210

A cast bronze model of a horse and scantily clad young lady. h. 560, w. 440mm.
\$750 - \$1000

211

A cast bronze model of a horse and scantily clad young lady. h. 560, w. 440mm.
\$750 - \$1000

212

A large bronze cast model of two swimming angel fish [one with repaired tail]. On a black marble base. h.770, w.720mm.
\$500 - \$800

213

Pair of bronze dragons each clasping a pearl of wisdom.
\$950 - \$1200



214

A large and impressive cast bronze fountain in the form of a writhing dragon clasping a pearl of wisdom. h. 900, w. 680mm.
\$1400 - \$1800

215

A bronze cast figure of Diana the Huntress, raised on a black marble base. h.700, w.180mm.
\$900 - \$1200

216

A bronze cast bronze figure of an Egyptian Dancer, raised on a stepped marble base. h.560, w.230mm.
\$750 - \$1000

217
A bronze cast figure of a golfer standing on a green putting. d.220mm.
\$500 - \$700

218
A bronze cast figure group of four galloping horses, on a stepped marble base. w.540, h.280mm.
\$500 - \$800

219
A bronze cast model of a prancing horse. h.300, w.330mm.
\$300 - \$400

220
Bronze figure group of two lions. h.270, w.370mm.
\$600 - \$800

221
A bronze cast figure group of a bear wrestling with a bull, on a black marble base. h.220, w.440mm.
\$600 - \$800

222
A bronze figure group of two elephants, raised on a black marble base. w.330, h.230mm.
\$650 - \$800

223
An Art Deco Demetre Chiparus-style dancer. h.280, w. 360mm.
\$200 - \$300

224
An Art Deco Demetre Chiparus-style dancer: figure. h.500, w.230mm.
\$200 - \$300

225
An Art Deco Demetre Chiparus-style dancer figure wearing a body suit. h. 630 w. 220
\$200 - \$300

226
An Art Deco Demetre Chiparus style dancer: figure
\$200 - \$300

227
An Art Deco Demetre Chiparus style dancer figure.
\$200 - \$300

228
A bronze cast figure group of three swimming marlin. w.460, h.390mm.
\$750 - \$900

229
A pair of Gallé style cameo cut glass vases. h.380mm.
\$250 - \$350

230
A pair of Gallé style cameo cut glass vases. h.380mm.
\$250 - \$350

231
A bronze cast figure of Mercury. h.580mm.
\$500 - \$800



232
A bronze cast figure of Mercury. h.580mm.
\$500 - \$800

233
A pair bronze lions each raised on a balls from a plinth base.
\$3000 - \$4000

234
A massive pair of sectional carved bone 'tusks'. Each carved in the Chinese style with figures and dragons in a landscape. h.1500mm
\$2500 - \$3000

235
A Gallé style cameo cut glass vase. h.500mm.
\$250 - \$350

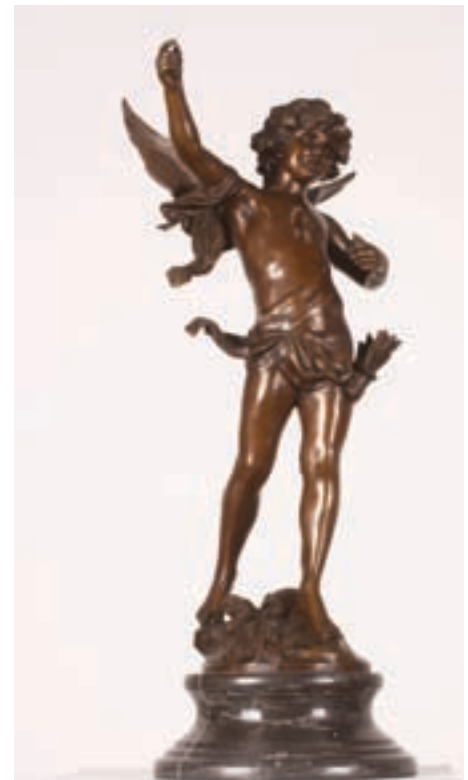
236
A bronze cast figure of a semi-clad young lady standing poised on a large seashell, after the original by Z. Madrassi. h.700mm.
\$700 - \$900

237
A bronze cast figure of an Art Deco dancer, with pleated fan skirt. h.560mm.
\$700 - \$1000

238
A bronze figure of Mercury. h.650mm
\$500 - \$800

239
A bronze figure of Mercury. h.650mm
\$500 - \$800

240
A bronze model of a cherub.
\$800 - \$1200



241
Bronze model of Leda and the swan. w. 450mm
\$800 - \$1200

242
A bronze cast figure of an angel. h.410mm.
\$300 - \$400

243
A bronze cast figure of an Art Deco dancer. h.400mm
\$700 - \$800

244
A large Italian porcelain figure group of an emperor charioteer. w.700, h. 520mm.
\$1000 - \$1500

245
A large carved baronial chair, the legs carved in the form of winged maidens with shell and scroll cresting piece and tapestry padded arms, seat and back.
\$1200 - \$1800

246
A Tiffany-style table lamp naturalistically rendered in the form of eighteen lilies
\$600 - \$800

247
A Tiffany-style table lamp naturalistically rendered in the form of eighteen lilies.
\$600 - \$800

248
A Tiffany-style lamp the base modelled as three peacocks with leaded-glass shade. h.800mm.
\$650 - \$800

249
A Tiffany-style table lamp with leaded-glass shade. h.800mm.
\$700 - \$900

250
A large and impressive Tiffany-style table lamp with wisteria leaded-glass shade. h.980mm.
\$800 - \$1200

251
A bronze Chiparus-style Art Deco dancer. h.680mm.
\$600 - \$800

252
A cast bronze figure of Adonis. h.600mm.
\$800 - \$1200

253
A cast bronze figure of Adonis. h.600mm.
\$800 - \$1200

254
A cast bronze figure of a classical athlete throwing a discus. h.630mm.
\$700 - \$900

255
A bronze cast figure of Jason holding the Golden Fleece. h.670mm.
\$750 - \$1000

256
A bronze cast figure of Jason holding the Golden Fleece. h.670mm.
\$500 - \$1000

257
A cast bronze figure of blacksmith. h.720mm.
\$800 - \$1200

258
A cast bronze figure of a Roman Caesar. h.600mm.
\$800 - \$1200

259
A cast bronze classical figure of an archer. h.700mm.
\$800 - \$1200



260
A cast bronze classical figure of an archer. h.700mm.
\$800 - \$1200

261
A cast bronze classical figure of a man wrestling a lion. h.630mm.
\$1000 - \$1500



262
A cast bronze Erte style Art Deco figure of a dancer. h.1006mm
\$1200 - \$1500

263
A classical bronze figure of a young boy removing a thorn from his foot. h.480mm.
\$750 - \$900

264
No lot

265
A bronze cast figure of an eagle.
\$800 - \$1200

266
A bronze cast figure of an eagle.
\$800 - \$1200

267
A cast bronze figure of an eagle resting on a rocky outcrop. h.400mm.
\$600 - \$800

268
A cast bronze classical figure of a lady seated in a shell supported by sturgeon fish. h.510mm.
\$800 - \$1200

269
A cast bronze figure of Theseus locked in battle with a Minotaur. h.400, w.500mm.
\$1000 - \$1500

270
A cast bronze figure of Theseus locked in battle with a Minotaur. h.400 w.500mm.
\$1000 - \$1500

271
Cornucopia iridescent glass vase by Colin Heany.
\$200 - \$300

272
A pair of marble urns raised on stepped fluted columns. h.1400mm
\$800 - \$1200

273
A pair of mottled pink marble urns raised on cylindrical marble columns. h.1400mm.
\$800 - \$1200.

274
A Wedgewood blue jasper ware urn vase decorated with classical figures.
\$100 - \$200

275
A Wedgewood blue jasper ware ovoid urn pot pourri vase. Decorated with rams heads and classical figures. h.300mm.
\$200 - \$400

276
A late 19th century Copeland Spode 'Columbus' commemorative jug with acanthus capped handle. h.220mm
\$300 - \$500

277
A Doulton Lambeth jug by Laura Gooderham with masks to the spout, decorated with Bachaillan figures and grape vines and with inscription 'Good is not good enough. The best is not too good'. h.180mm.
\$300 - \$500

278
A Copeland Spode Parian bust of Princess Alexandra by Mary Thornycroft c.1863. h.380mm.
\$500 - \$800

279
A Royal Worcester pot pourri vase. The pierced lidded vase supported on the wings of an eagle raised on a circular spreading foot. h.220mm.
\$400 - \$600

280
A Royal Worcester jug painted with summer flowers with naturalistic tree branch form gilded handle.
\$400 - \$600

281
A French porcelain centrepiece with gilt brass mounts.
\$40 - \$80

282
Three Delft tiles.
\$100 - \$150

283

A pair of Chinese 18th century bottle vases with monochrome mustard yellow glaze raised on fitted wooden stands. h.300mm
\$1000 - \$2000

284

A Japanese ivory okimono of a sage carrying a gourd and a small boy on his back together with a carved ivory figure of a small boy making an offering.
\$200 - \$300

285

A carved ivory elephant bridge together with a carved ivory cart led by two bullocks.
\$100 - \$200

286

A carved ivory gold fish together with a netsuke carved as a street vendor.
\$50 - \$100

287

A carved Japanese ivory okimono of an elephant being attacked by a group of oni.
\$400 - \$600

288

A Japanese sectional carved ivory figure of a man wearing a kimino holding a bottle of sake.
\$100 - \$200

289

A Chinese carved ivory fan.
\$100

290

A carved ivory netsuke of Daruma with attendants.
\$100 - \$200

291

A decorative Chinese bevel edged wall mirror; the black leather frame with figures and pagodas 1070 x 580mm
\$400 - \$600

292

A Japanese folding screen pierced with birds and floral decoration. The central panel with two sages in a landscape rendered in ivory and gold lacquer. 1150 x 1050mm.
\$500 - \$800

293

A Japanese ovoid cloisonné vase decorated with flowers and butterflies. h.250mm.
\$50 - \$100

294

Pr of Chinese champlevé bronze and enamel vases. h.330mm.
\$200 - \$300

295

An English "Jolly Nigger" bank money box, unusually cast wearing a top hat. Lacking base plate.
\$200 - \$300



283



296

An Inuit marine ivory fishing line, the handle carved as an otter.
\$150 - \$200

297

A group of Anglo-Indian weapons including a mace, three axes with wooden handles, and a sword with brass scabbard.
\$100 - \$200

298

A Hemba anthropomorphic stool. The circular top supported on two male figures with broad bent arms and large hands. Oval facial plane with almond shaped eyes and diminutive collar like beard, each with distended stomach with squat bent legs and large feet. Standing on circular disc form base conforming to the top.
\$500 - \$1000

299

A Songye Kifwebe pigment painted female mask with protruding square section mouth beneath a broad nose and almond shaped eyes, the arching brow leading to a backswept raffia headdress.
\$300 - \$500

300

A Songye Kifwebe pigment painted female mask similar to the above.
\$300 - \$500

301

A Luba mask pigment painted with wide slit mouth and almond shaped slit eyes, the arching brow leading to a backswept raffia headdress
\$200 - \$400

302

A Players Weights cigarette advertising poster. Stuck down on board.
\$100 - \$200

303

Three framed antique kelim carpet sections.
\$30 - \$50

304

American Flamingo coloured engraving by J.J. Audebon
\$200 - \$400



295

CONDITIONS OF SALE

NOTE IT IS ASSUMED THAT ALL BIDDERS AT AUCTION HAVE READ AND AGREED TO THE CONDITIONS DESCRIBED ON THIS PAGE. ART+OBJECT DIRECTORS ARE AVAILABLE DURING THE AUCTION VIEWING TO CLARIFY ANY QUESTIONS YOU MAY HAVE.

1 REGISTRATION: Only registered bidders may bid at auction. You are required to complete a bidding card or absentee bidding form prior to the auction giving your correct name, address and telephone contact + supplementary information such as email addresses that you may wish to supply to ART+OBJECT

2 BIDDING: The highest bidder will be the purchaser subject to the auctioneer accepting the winning bid and any vendor's reserve having been reached. The auctioneer has the right to refuse any bid. If this takes place or in the event of a dispute the auctioneer may call for bids at the previous lowest bid and proceed from this point. Bids advance at sums decreed by the auctioneer unless signaled otherwise by the auctioneer. No bids may be retracted. The auctioneer retains the right to bid on behalf of the vendor up to the reserve figure.

3 RESERVE: Lots are offered and sold subject to the vendor's reserve price being met.

4 LOTS OFFERED AND SOLD AS DESCRIBED AND VIEWED: ART+OBJECT makes all attempts to accurately describe and catalogue lots offered for sale. Notwithstanding this neither the vendor nor ART+OBJECT accepts any liability for errors of description or faults and imperfections whether described in writing or verbally. This applies to questions of authenticity and quality of the item. Buyers are deemed to have inspected the item thoroughly and proceed on their own judgment. The act of bidding is agreed by the buyer to be an indication that they are satisfied on all counts regarding condition and authenticity.

5 BUYERS PREMIUM: The purchaser by bidding acknowledges their acceptance of a buyers premium of 15% + Gst on the premium to be added to the hammer price in the event of a successful sale at auction.

6 ART+OBJECT IS AN AGENT FOR A VENDOR: A+O has the right to conduct the sale of an item on behalf of a vendor. This may include withdrawing an item from sale for any reason.

7 PAYMENT: Successful bidders are required to make full payment immediately post sale – being either the day of the sale or the following day. If for any reason payment is delayed then a 20% deposit is required immediately and the balance to 100% required within 3 working days of the sale date. Payment can be made by Eftpos, bank cheque or cash. Cheques must be cleared before items are available for collection. Credit cards are not accepted.

8 FAILURE TO MAKE PAYMENT: If a purchaser fails to make payment as outlined in point 7 above ART+OBJECT may without any advice to the purchaser exercise its right to: a) rescind or stop the sale, b) re offer the lot for sale to an underbidder or at auction. ART+OBJECT reserves the right to pursue the purchaser for any difference in sale proceeds if this course of action is chosen, c) to pursue legal remedy for breach of contract.

9 COLLECTION OF GOODS: Purchased items are to be removed from ART+OBJECT premises immediately after payment or clearance of cheques. Absentee bidders must make provision for the uplifting of purchased items

10 BIDDERS OBLIGATIONS: The act of bidding means all bidders acknowledge that they are personally responsible for payment if they are the successful bidder. This includes all registered absentee or telephone bidders. Bidders acting as an agent for a third party must obtain written authority from ART+OBJECT and provide written instructions from any represented party and their express commitment to pay all funds relating to a successful bid by their nominated agent.

11 BIDS UNDER RESERVE & HIGHEST SUBJECT BIDS: When the highest bid is below the vendor's reserve this work may be announced by the auctioneer as sold 'subject to vendor's authority' or some similar phrase. The effect of this announcement is to signify that the highest bidder will be the purchaser at the bid price if the vendor accepts this price. If this highest bid is accepted then the purchaser has entered a contract to purchase the item at the bid price plus any relevant buyers premium.

IMPORTANT ADVICE FOR BUYERS

THE FOLLOWING INFORMATION DOES NOT FORM PART OF THE CONDITIONS OF SALE, HOWEVER BUYERS, PARTICULARLY FIRST TIME BIDDERS ARE RECOMMENDED TO READ THESE NOTES.

(A) BIDDING AT AUCTION: Please ensure your instructions to the auctioneer are clear and easily understood. It is well to understand that during a busy sale with multiple bidders the auctioneer may not be able to see all bids at all times. It is recommended that you raise your bidding number clearly and without hesitation. If your bid is made in error or you have misunderstood the bidding level please advise the auctioneer immediately of your error – prior to the hammer falling. Please note that if you have made a bid and the hammer has fallen and you are the highest bidder you have entered a binding contract to purchase an item at the bid price. New bidders in particular are advised to make themselves known to the sale auctioneer who will assist you with any questions about the conduct of the auction.

(B) ABSENTEE BIDDING: ART+OBJECT welcomes absentee bids once the necessary authority has been completed and lodged with ART+OBJECT. A+O will do all it can to ensure bids are lodged on your behalf but accepts no liability for failure to carry out these bids. See the Absentee bidding form in this catalogue for information on lodging absentee bids. These are accepted up to 2 hours prior to the published auction commencement.

(C) TELEPHONE BIDS: The same conditions apply to telephone bids. It is highly preferable to bid over a landline as the vagaries of cellphone connections may result in disappointment. You will be telephoned prior to your indicated lot arising in the catalogue order. If the phone is engaged or connection impossible the sale will proceed without your bidding. At times during an auction the bidding can be frenetic so you need to be sure you give clear instructions to the person executing your bids. The auctioneer will endeavour to cater to the requirements of phone bidders but cannot wait for a phone bid so your prompt participation is requested.

ABSENTEE BID FORM

Auction No 29 22nd April 2009 NEW COLLECTORS ART

Auction No 30 2nd + 3rd May 2009 THE JIM DRUMMOND COLLECTION

Auction No 31 14th May 2009 DECORATIVE ARTS + THE NZ SALE

This completed and signed form authorizes ART+OBJECT to bid on my behalf at the above mentioned auction for the following lots up to prices indicated below. These bids are to be executed at the lowest price levels possible.

I understand that if successful I will purchase the lot or lots at or below the prices listed on this form and the listed buyers premium for this sale (15%) and GST on the buyers premium. I warrant also that I have read and understood and agree to comply with the conditions of sale as printed in the catalogue.

[illegible]

PAYMENT AND DELIVERY ART+OBJECT will advise me as soon as is practical that I am the successful bidder of the lot or lots described above. I agree to pay immediately on receipt of this advice. Payment will be by cash, cheque or bank transfer. I understand that cheques will need to be cleared before goods can be uplifted or dispatched. I will arrange for collection or dispatch of my purchases. If ART+OBJECT is instructed by me to arrange for packing and dispatch of goods I agree to pay any costs incurred by ART+OBJECT. Note: ART+OBJECT requests that these arrangements are made prior to the auction date to ensure prompt delivery processing.

Please indicate as appropriate by ticking the box:

PHONE BID ☐ABSENTEE BID ☐

MR/MRS/MS: _____ SURNAME: _____

POSTAL ADDRESS: _____

STREET ADDRESS: _____

BUSINESS PHONE: _____ MOBILE: _____

FAX: _____ EMAIL: _____

Signed as agreed: _____

To register for Absentee bidding this form must be lodged with ART+OBJECT prior to the published sale time in one of three ways:

1. Fax this completed form to ART+OBJECT +64 9 354 4645
2. Email a printed, signed and scanned form to: info@artandobject.co.nz
3. Post to ART+OBJECT, PO Box 68 - \$345 Newton, Auckland 1145, New Zealand

ART+OBJECT 3 Abbey Street, Newton, Auckland, New Zealand. Telephone +64 9 354 4646, Freephone 0800 80 60 01

CONTACTS SUBSCRIBE



HAMISH CONEY
Managing Director
hamish@artandobject.co.nz
021 509 550



BEN PLUMBLY
Director Art
ben@artandobject.co.nz
021 222 8183



JAMES PARKINSON
Director Valuations
james@artandobject.co.nz
021 222 8184



ROSS MILLAR
Director Objects
ross@artandobject.co.nz
021 222 8185



LEIGH MELVILLE
Front of House Manager
leigh@artandobject.co.nz
09 354 4646

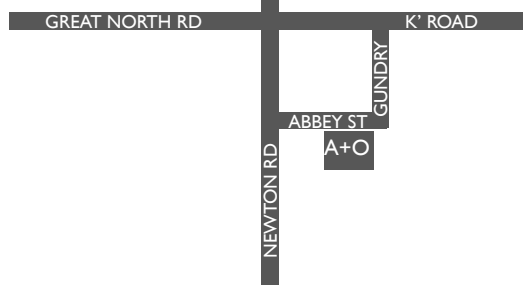


GEORGIE CAUGHEY
Valuation Consultant
09 354 4646

3 Abbey Street,
Newton
PO Box 68 345,
Newton
Auckland 1145,
New Zealand

Telephone +64 9 354 4646
Freephone 0800 80 60 01
Facsimile +64 9 354 4645
info@artandobject.co.nz
www.artandobject.co.nz

TO THE INDUSTRY LEADING AUCTION CATALOGUES. Complete with superb photography, insightful essays and news. Over time these become an important archive of events, art and objects. A subscription guarantees a minimum of six catalogues per annum delivered to your preferred address.



NEW ZEALAND \$100.00
SUBSCRIPTION RATES INCLUDE GST + POSTAGE:
AUSTRALIA \$160.00
REST OF THE WORLD (AIRMAIL FASTPOST) \$275.00

MR/MRS/MS: _____ SURNAME: _____

POSTAL ADDRESS: _____

STREET ADDRESS: _____

BUSINESS PHONE: _____ MOBILE: _____ FAX: _____

EMAIL ADDRESS: _____

Please find my CHEQUE enclosed ☐ or charge my VISA ☐ MASTERCARD ☐

CARD NUMBER: _____ EXPIRY DATE: _____

Post with cheque to ART+OBJECT, PO Box 68345 Newton, Auckland 1145, NZ
Fax with credit card details to +64 9 354 4645.

Download this form from www.artandobject.co.nz

ARTISTS INDEX

ABERHART, Laurence	123, 124	GEORGE Darryn	23	QUINN Kenneth	12
ADSETT Sandy	135	GIMBLETT Max	130	RAE Jude	44
ALBRECHT Gretchen	43, 97, 97, 98, 156	GOOD Roy	59	RASTORFER Lorraine	200
AUBREY Christopher	125	GOPAS Rudolph	6	REYNOLDS John	13, 14, 40, 64, 158
BAIRD Kingsley	39	GOSSAGE Star	60	ROBINSON Peter	161
BINNEY Don	33, 184	HANLY Pat	29, 92, 121, 181	SCHOON Theo	208
BLACK Sharyn	84, 85, 86	HARRIS Jeffrey	63, 89	SEARLE R.J.	69
BLAIR Philippa	56, 168, 187, 188, 204, 207	HAYMAN Patrick	88	SIDDELL Peter	53
BRAGGE James	67	HONOUR Basil	155	SIMMONDS Phyllis	203
BRAKE Brian	87	HOTERE Ralph	27, 37, 38, 120, 129, 162	SMITHER Michael	26, 94, 100, 122, 175
BROWN Nigel	18	HOTERE Ralph and MANHIRE Bill	146	STEVENSON Eion	209
BROWNE Mary Louise	174	HOYLAND John	99	STEWART Helen	96
BRUCE Adair	1	JACKSON Russell	189, 196	STRINGER Terry	57
BRYANT Chris	126	JOHNS Paul	199	SYDNEY Grahame	20, 21
BUNKLEY Britt	157	KAHUKIWA Robyn	103	TAWHIO Tracy	41
CHANCE George	70, 71, 72, 73, 74, 75, 76, 77, 78, 79, 80, 81, 82, 83, 170	KILLEEN Richard	17, 116, 117, 118	TUFFERY Michael	152
CHAPMAN-TAYLOR J.W.	66, 68	KING Marcus	50	VEITCH J.C.	105, 105a, 106, 107
COOK James	45, 51	LAITA Lily	48	WARHOL Andy	127
CORNWALL Graeme	111, 177, 178	LANE Tony	47	WALSH John	28
COTTON Shane	112, 113, 114, 115, 160	LLOYD Trevor	49	WALTERS Gordon	90, 91
CLAIRMONT Philip	34, 35, 36, 128	MACELEOD Euan	61	WEALLEANS Rohan	101
CLEAVIN Barry	4	MAFFEI L.	195	WEBB Murray	7
CRIPPEN Jack	176	MATHIESON Christine	185	WEBSTER Christine	151
CROSSMAN Wallace	2, 5	MAYO Eileen	136, 137	WEEKS John	25
CUMMINGS Vera	169	MCCAHON Colin	148	WESTON Mike and FRIZZELL Otis	31
DAY Melvin	52	MINTYRE Peter	30	WESTRA Ans	8, 10, 11, 65
DEMENTE Donna	62	MCEOD Robert	166	WHITE'S Aviation	171
DIBBLE Paul	58	MCPHEE Charles	119	WHITE Robin	190, 191, 192, 201
DINNAN	9	MWHANNELL Richard	131	WILLIAMS Mervyn	150
DOLEZEL Jenny	186	MADDOX Allen	42, 132, 159, 163	WOLFE Pamela	165, 193, 194, 205, 206
DRAWBRIDGE John	22	MATCHITT Paratene	154, 202	WONG Sing Tai	172, 173
DRIVER Don	164	MAUGHAN Karl	133	WOOD Agnes	108, 109, 110
DUTCH Ted	139, 140	MOON Nic	138	WOODING Norman	55
ELLIS Robert	102, 134	NIGRO Jan	197	WOOLLASTON Toss	95
FAHEY Jacqueline	32	PALMER Stanley	104		
FOMISON Tony	15	PAUL Joanna Margaret	46		
FONG Luise	16	PICASSO Pablo	183		
FRANCIS John	3	PICK Seraphine	201		
FRANKEN Robert	182	PULE John	93, 147, 153		
FRITCHLEY Hayden	179	POND-EYLEY Claudia	167		
FRIZZELL Dick	19, 24, 54, 180				



AO