

ART + OBJECT

THE 21st CENTURY
AUCTION HOUSE



Waka Huia

Precious vessels



Taonga Tūturu

omni
Auction

*3 magnificent waka huia.
From top lots 100, 101, 102.*

The waka huia or papahou was the treasure box of a chief or of a family group. The waka huia was designed to be a sacred container for small treasured items of adornment and takes its name from the prized huia tail feathers which are the mark of chiefly status or high rank. Whalebone and wooden combs for the hair, tiki, pekapeka and other pounamu items and feathers were all retained in the papahou under a very special tapu, the box being suspended from a rafter of a chief's sleeping hut, or kept in a small whatu rangi upheld by a single pole at a great height.

It is interesting to note that the waka huia or papahou was widely distributed as many were given as gifts to early Pakeha visitors by Maori to assist in a safe passage to the recipient's homelands. Many have subsequently returned to New Zealand.

A+O's Omni catalogue features three fine examples spanning some 150 to 200 years from pre-European times to the late 19th century.

Illustrated front cover Lot 105.

ART+OBJECT
3 Abbey Street, Newton
PO Box 68 345, Newton
Auckland 1145, New Zealand
Telephone +64 9 354 4646
Freephone 0800 80 60 01
Facsimile +64 9 354 4645
info@artandobject.co.nz
www.artandobject.co.nz

omni* Two auction days:
Thursday May 24
Saturday May 26

PART
1 New Collectors art:
Lots 1 to 92
Auction Thursday May 24
6.30pm

PART
2 Taonga Tūturu:
Lots 100 to 128
Auction Saturday May 26
1pm

PART
3 NZ Items+ Folk Art:
Lots 129 to 173
Auction Saturday May 26

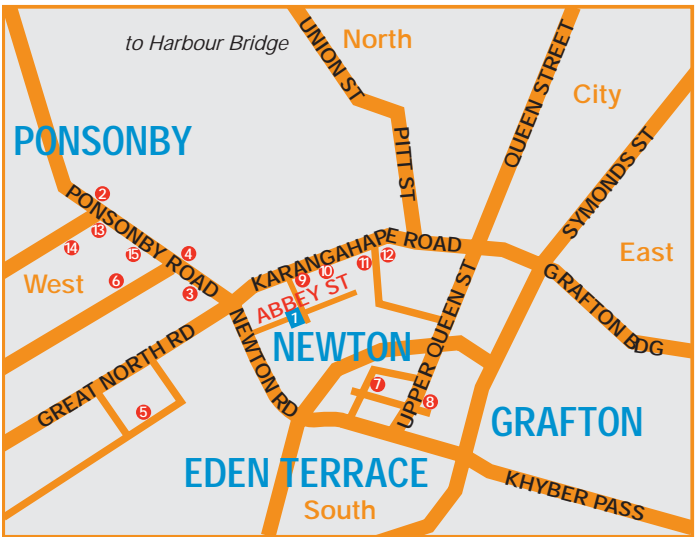
PART
4 Antiques, Modern Movement,
Oriental Arts, Silver,
Furniture, Decorator Items
Lots 174 to 581
Auction Saturday May 26

Exhibition viewing

Launch and late night viewing Friday May 18, 6–8pm
Join the A+O team for a glass of Maven wine

Saturday	May 19	10am – 5pm
Sunday	May 20	10am – 5pm
Monday	May 21	9am – 5pm
Tuesday	May 22	9am – 5pm
Wednesday	May 23	9am – 5pm
Thursday	May 24	9am – 1pm <i>(New Collectors art viewing concludes)</i>
Friday	May 25	12noon – 5pm <i>(Taonga Tūturu, artefacts, New Zealand items and antiques)</i>
Saturday	May 26	10am – 12noon

AUCTION TIMES Please note that the Saturday auction consists of over 400 lots. It is anticipated that the duration of the auction will be approximately 4 hours or 120 lots per hour. Bidders are advised to arrive well before the indicated auction commencement to secure parking, seating and register to bid.



- | | |
|-------------------------------|----------------------|
| 1 ART+OBJECT | 9 STARKWHITE |
| 2 Masterworks | 10 Michael Lett |
| 3 Objectspace | 11 Ivan Anthony |
| 4 Art Station | 12 ARTSPACE |
| 5 Two Rooms | 13 Lord Ponsonby's |
| 6 Whitespace | 14 Bashford Antiques |
| 7 SOCA Gallery | 15 Real Time |
| 8 Roger Williams Contemporary | |

Contents	
2	Preview - a snapshot of some of the key furniture and design items to be offered in A+O's 20th Century design auction on July 28
4	Part 1 New Collectors art catalogue commences – choose from classic works on paper by some of our most important artists and a selection of historic photographs – Auction Thursday 24 May, 6.30pm
10	Part 2 Taonga Tūturu and artefacts – Auction Saturday 26 May, from 1pm
12	Part 3 New Zealand items including fine woodwork, folk art and Kiwiana
14	Part 4 Antiques, decorative arts and furniture
28	Catalogue subscriptions - take out an annual subscription to A+O's industry leading catalogues
28	Conditions of sale and absentee bidding
IBC	Prices realised at A+O's inaugural auction on May 3 – Contemporary art and objects

20th Century Modern Design

**Auction
July 28**

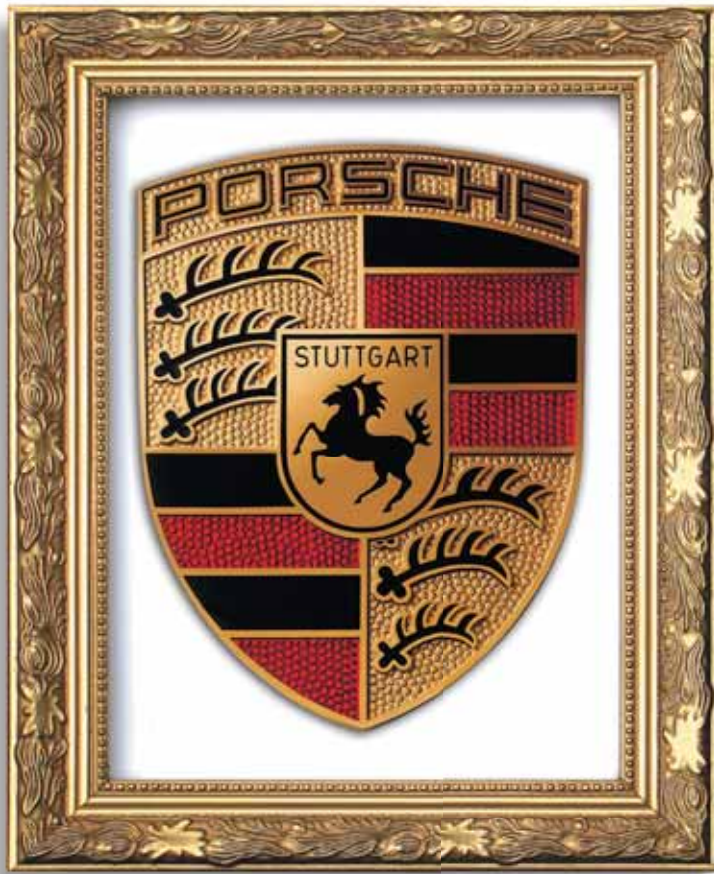
Entries invited until June 21

ART+OBJECT is cataloguing a superb selection of furniture, accessories and design items by many of the leading designers and architects of the 20th Century. Highlights to date include 2 Egg chairs by Arne Jacobsen, a Le Corbusier chaise longue, a large Ron Arad 'Fly Ply' dining table, a Charles Rennie Mackintosh Argyle chair, a set of six rare Fornasetti chairs, a pair of B&B Italia couches, a Gio Ponti Rosewood desk, a selection of Vallauris ceramics, an Eero Saarinen 6 seater tulip dining suite, a Heywood Wakefield 1950s American dining suite, a superior selection of Danish furniture and credenzas and signature examples by Hans Wegner, Charles and Ray Eames, Verner Panton, Finn Juhl, Peter Hivdt, Jens Quistgaard, Joe Colombo together with German pottery and G-Plan furniture.



Limited final entries are called for this major design event. Enquiries to Ben Plumbly ben@artandobject.co.nz +64 9 306 6191 mob 021 222 8183 and James Parkinson james@artandobject.co.nz +64 9 306 6192 mob 021 222 8184.

1. Ron Arad, 'Fly Ply' dining table manufactured by Driade \$8000-12 000
2. Fornasetti Sunchair, occasional chair \$1000-2000
3. Le Corbusier 'Modelle' Sofa designed in 1928, manufactured under licence by Cassina \$3000-5000
4. A selection of German pottery from a private collection of over 30 pieces
5. One of a pair of space age British Club chairs \$4000-6000



State of the art.

Inspiration, innovation and dedication lead to the creation of the world's most beautiful cars.
Experience the ultimate expression of form and function for yourself at Giltrap Prestige.

Giltrap

Prestige

100 & 120 Great North Rd, Auckland. Phone 360 3200. www.giltrap.co.nz

PART ONE

New Collectors Art

Lots 1 to 92
Auction Thursday May 24 at 6.30pm



1+
Joanna Braithwaite
Blue Togs
oil on canvas
title inscribed, signed and dated '96
210 x 203mm
\$300 - \$500



2+
Peter Robinson
Untitled
etching, a/p
signed and dated 2004
200 x 295mm
\$600 - \$1000



3+
Don Binney
Abbey Hedge, Walsingham
lithograph, 17/30
title inscribed, signed and dated 1999
425 x 520mm
\$1200 - \$2000



4+
Mabel Hill
Autumn Landscape
watercolour
signed and dated 1921; title inscribed on Tinakori Gallery label
affixed verso
243 x 392mm
\$600 - \$900



5+
Stanley Palmer
Tree – North Manukau
bamboo engraving, 22/50
title inscribed, signed and dated 1972
330 x 565mm
\$500 - \$800



6+
Eion Stevens
Hat Secrets
oil on board
title inscribed, signed with artist's initials ES and dated '97
350 x 400mm
\$400 - \$600



7+
Archibald F. Nicoll
Cadell's Shed
oil on board
signed; title inscribed, signed and inscribed 6 verso
395 x 500mm
\$1000 - \$2000



8+
Allie Eagle
Untitled – Hillside
watercolour
signed and dated 1995
487 x 700mm
\$500 - \$800



9+
Liam Davidson
Mangere Hills II
acrylic on board
signed and dated 00; title inscribed verso
210 x 603mm
\$800 - \$1200



10+
Tony de Lautour
Untitled
graphite on paper
signed with artist's initials TDL and dated 10-1-92
222 x 155mm
\$400 - \$600



11+
Philipa Blair
(Parlake) To Speak
pastel on paper
signed and dated '89; title printed on artist's original label
affixed verso
600 x 820mm
\$800 - \$1400



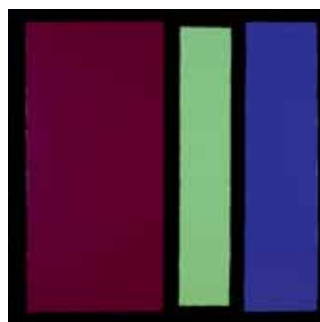
12+
Basil Honour
Hills in Snow
acrylic on board
signed and dated '68; inscribed #565 on artist's original
catalogue label affixed verso
550 x 745mm
\$1,000 - \$2,000



13+
Hayden Jarrett
Rocky Outcrop – Australia
watercolour
signed and dated '94
490 x 580mm
\$600 - \$900



14+
Hayden Jarrett
Australian Landscape
watercolour
signed and dated '94
490 x 592mm
\$600 - \$900



15+
Leon van den Eijkel
Long Cloud at Paki
enamel on board
title inscribed, signed and dated 1999 verso and inscribed 8
1000 x 1000mm
\$1000 - \$2000



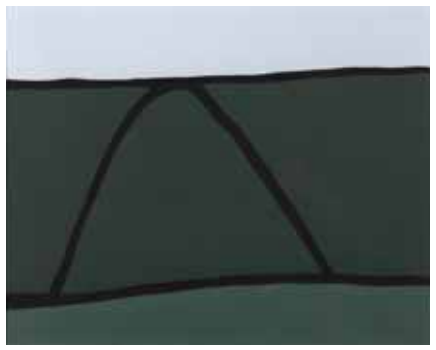
16

Jeffrey Harris
Untitled – from the Judith Series
 pastel on paper
 signed and dated 1979 and inscribed *For Judith*
 640 x 900mm
\$3000 - \$5000



17

Jeffrey Harris
Landscape (from the Van Gogh Series)
 oil on paper
 title inscribed, signed and dated 1977 verso
 570 x 772mm
\$2500 - \$3500



18

Colin McCahon
North Otago Landscape
 screenprint from the Barry Lett Gallery Multiples
 445 x 550mm
\$3000 - \$4000



19

Pat Hanly
Who Am I / I Am / Do It
 screenprint, 6/20
 title inscribed, signed and dated '72
 570 x 635mm
\$3000 - \$5000



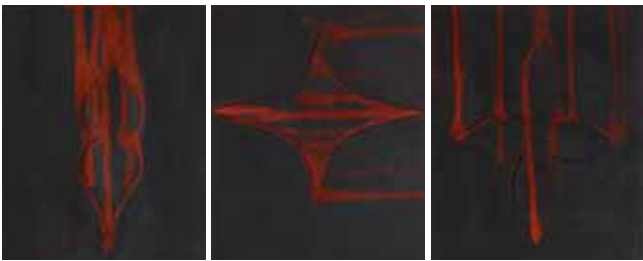
20

Pat Hanly
Untitled – Figure and Dove
 screenprint, 86/101
 signed and dated '85
 590 x 782mm
\$3500 - \$4500



21

Bill Hammond
Fish Finder 4
 etching, a/p
 title inscribed, signed and dated 2004
 292 x 195mm
\$2000 - \$3000



22

Luise Fong
Anchor
 gesso, carbarundrum, acrylic and gouache on board
 signed and dated 1997 and inscribed *Fathom Series Onetangi*
 title printed on label affixed verso
 400 x 330mm each
 400 x 990mm overall
\$2500 - \$3500



23

J. S Parker
Plain Song: Song to the Spirit of Industrial Man
 oil on canvas
 signed and dated 99/02
 910 x 1520mm
\$3000 - \$5000



24

Ian Scott
Takaka
 oil on canvas
 title inscribed; dated Sept – Oct '87 verso
 920 x 1800mm
\$3000 - \$5000



25

Doris Lusk
Sketch for Sunset Demolition
 watercolour, charcoal and pastel on paper
 title inscribed, signed and dated '98
 420 x 592mm
\$3000 - \$5000



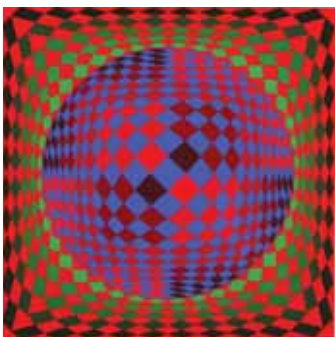
26

Ray Ching
Reclining Nude
 graphite on paper
 signed and dated 1966
 450 x 730mm
\$3500 - \$5000



27

Michael Smither
Island Side and Waves
 oil on board
 title inscribed, signed and dated 1979 verso
 416 x 416mm
\$5000 - \$8000



28

Victor Vasarely
Untitled
 screenprint, 31/250
 signed
 450 x 450mm
 Provenance: Purchased by the current owner from Anne Lahumiere Gallery in Paris, Victor Vasarely's original gallerist.
\$2000 - \$3000



29

Victor Vasarely
Untitled
 screenprint, 31/250
 signed
 450 x 450mm
 Provenance: Purchased by the current owner from Anne Lahumiere Gallery in Paris, Victor Vasarely's original gallerist.
\$2000 - \$3000



30

Rudolf Gopas
Chromatic Abstract
 oil and acrylic on card
 signed and dated '73
 1045 x 900mm
\$5000 - \$8000

31



Ralph Hotere

White

lithograph, 21/21

title inscribed, signed and dated 1997

760 x 565mm

\$5000 - \$8000

32



Seraphine Pick

Woman in a Black Dress

watercolour and gouache on paper

signed and dated 2003

760 x 530mm

\$4000 - \$6000

33



Richard Killeen

Interpretation

acrylic on paper

title inscribed, signed and dated 20 – 7 – 79

410 x 335mm

\$3500 - \$5000

34



Alan Taylor

Orakei

oil on canvasboard

signed; title inscribed and signed verso

600 x 400mm

\$1500 - \$2500

35



Pat Hanly

Inside the Garden

screenprint from the Barry Lett Gallery Multiples

425 x 530mm

\$600 - \$900

36



Gretchen Albrecht

Sundial

screenprint, 105/125

title inscribed, signed and dated March '80

780 x 625mm

\$1000 - \$2000

37



M. Stankonska

Still Life with Apples

gouache

signed and dated 1947

430 x 345mm

\$500 - \$800

38



Stanley Palmer

Steep Hills – Goat Island

bamboo engraving, 41/50

title inscribed, signed and dated 1972

480 x 452mm

\$300 - \$500

39



Gordon Crook

Allegory (1)

screenprint, 10/10

title inscribed, signed with artist's initials GC and dated '82

860 x 610mm

\$400 - \$600

40



Gordon Crook

Allegory (2)

screenprint, 10/10

title inscribed, signed and dated '82

860 x 610mm

\$400 - \$600

41



Gordon Crook

Allegory (3)

screenprint, 10/10

title inscribed, signed and dated '82

860 x 610mm

\$400 - \$600

42



Claudia Pond-Eyley

July Still-Life

screenprint, 18/50

title inscribed, signed and dated 1988

820 x 595mm

\$500 - \$800

43



Claudia Pond-Eyley

Domestic Still-Life

screenprint, 4/38

title inscribed, signed and dated 1982

820 x 595mm

\$500 - \$800

44



Suzanne Goldberg

The Hen

watercolour

signed and dated '76

105 x 88mm

\$100 - \$200

45



Dorothy Waters

Lake Lugano

watercolour

405 x 308mm

signed and dated '93; title inscribed verso

\$300 - \$500



46

Dorothy Waters

From the Hotel Comogli

watercolour

signed and dated '93; title inscribed and signed verso

410 x 355mm

\$300 - \$500



47

Fatu Feu'u

Tapui

lithograph, 14/24

title inscribed, signed and dated

715 x 530mm

\$800 - \$1200



48

Garth Tapper

The Front Row Forward

pastel on paper

signed and dated 1981

410 x 290mm

\$600 - \$900



49

Brent Harvey

Study of a Robin

watercolour, ink and bodycolour on paper

signed

370 x 295mm

\$600 - \$900



50

Sydney Nolan

Untitled - Abstract

screenprint, 17/70

signed

550 x 458mm

\$200 - \$400



51

Sir William Russell Flint

The Two Models

collotype, a/p

signed on the plate and in the artist's hand

393 x 295mm

\$300 - \$500



52

Rodney Fumpston

Sky Pastel

acrylic and pastel on paper

title inscribed, signed and dated '79; original Brook Gifford

Gallery label affixed verso

490 x 485mm

\$200 - \$300



53

Gordon Crook

Untitled - Abstract Composition

screenprint

720 x 540mm

\$300 - \$500



54

Gordon Crook

Totem with Kiwi Soul Bird

screenprint, 8/12

title inscribed, signed with artist's initials GC and dated '83

1055 x 755mm

\$400 - \$600



55

Christine Matheson

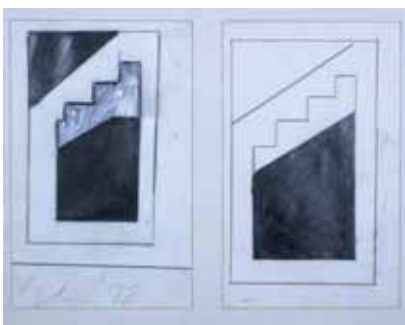
Untitled

acrylic on linen

signed and dated '85

1300 x 1110mm

\$100 - \$200



56

Gordon Crook

Geometric Abstract Study

charcoal and graphite on paper, diptych

signed with artist's initials GC and dated '78

500 x 680mm overall

\$100 - \$300



57

Richard Chrisp

Brazil

watercolour, bodycolour and pencil on paper

title inscribed, signed and dated '85

433 x 455mm

\$500 - \$800



58

Bridget Webber

Timelapse Portrait Panorama

gelatin silver prints

inscribed 11 verso

160 x 707mm

\$300 - \$500



59

Bridget Webber

Gallerina Palatina, Pitti Palace

gelatin silver prints, triptych

titles inscribed, signed and dated '94 on each verso

230 x 320mm each

\$400 - \$600



60

Ian Scott

Estuary - Whangapoua Harbour, Coromandel

watercolour

signed and dated '95; title inscribed, signed and dated January

1995 on artist's original label affixed verso

340 x 525mm

\$500 - \$800



61

Ella Spicer

Bay of Islands

watercolour

signed; title printed on label affixed verso

230 x 320mm

\$200 - \$300



62

Gavin Chilcott

Heatwave

pastel on paper

title inscribed, signed and dated Feb '77

450 x 560mm

\$400 - \$600



63

Jane Zusters

David Turner - Study IV

acrylic and oil on board

title inscribed, signed and dated '83 verso

190 x 243mm

\$200 - \$400



64

Jane Zusters

Douglas Isle of Man 1968

watercolour and ink on paper

signed with artist's initial Z and dated '80; title inscribed verso

175 x 270mm

\$200 - \$300



65

Jane Zusters

Untitled - Abstract Study

watercolour

signed and dated '80

175 x 265mm

\$200 - \$300



66

Peter Williams

Coastal View

oil on board

signed and dated '98

440 x 600mm

\$200 - \$400



67

Nineteenth Century Artist Unknown

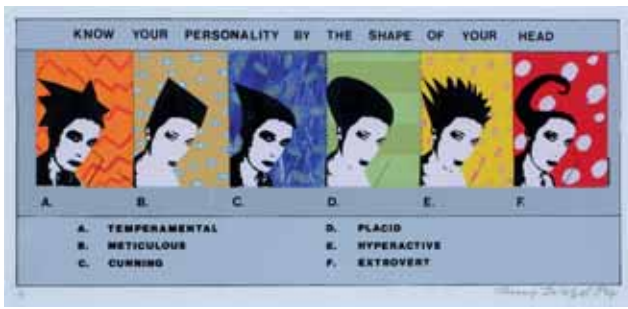
Manly, Sydney

watercolour and pencil on paper

title inscribed, signed and dated March 1889

80 x 253mm

\$400 - \$600



68

Jenny Dolezel

Know Your Personality by the Shape of your Head

screenprint and applied acrylic, 1/1

signed and dated 1984

225 x 460mm

\$600 - \$900



69

Jane Zusters

Eden: 1

watercolour, acrylic and photographic collage on paper

title inscribed, signed and dated '88

185 x 250mm

\$200 - \$300



70

Ollie Perkins

System

oil on 6 found wooden panels

installation size variable

\$300 - \$600



71

Nichola Shanley

I Left to the Shore, Our Forests are Bare, And Then he Alighted, The Woman Climbed Up

a suite of four etchings, edition of 30

individually signed and dated '91; titles inscribed on The Lane

Gallery labels affixed verso

170 x 210mm each

\$600 - \$900



72

George Chance

Bridge of Remembrance

gelatin silver print

title inscribed and signed

270 x 315mm

\$100 - \$200



73

George Chance

Fairy Sentinels - Taupo

gelatin silver print

title inscribed and signed

220 x 270mm

\$100 - \$200



74

George Chance

Cloisters - Canterbury College

gelatin silver print

title inscribed and signed

225 x 280mm

\$140 - \$200



75

George Chance

Woodland Sunshine - Christchurch

gelatin silver print

title inscribed and signed

225 x 280mm

\$100 - \$200



76

George Chance
From the Summit – Lewis Pass
 gelatin silver print
 title inscribed and signed
 228 x 283mm
\$150 - \$250



77

George Chance
Paihai Beach – North Auckland
 gelatin silver print
 title inscribed and signed
 226 x 276mm
\$100 - \$200



78

George Chance
Queenstown and the Remarkables
 gelatin silver print
 title inscribed and signed
 225 x 275mm
\$150 - \$300



79

George Chance
Winter Sunshine
 gelatin silver print
 title inscribed and signed
 218 x 270mm
\$100 - \$200



80

Frank Coxhead
Bank of New Zealand
 albumen print
 title inscribed and signed with artist's initials FAC
 132 x 183mm
\$50 - \$100



81

Frank Coxhead
Ligar River – Waiau
 albumen print
 title inscribed and signed with artist's initials FAC
 132 x 182mm
\$50 - \$100



82

Burton Bros
On the Frankton Road – Lake Wanaka
 albumen print
 title inscribed and signed
 140 x 180mm
\$100 - \$200



83

Burton Bros
Town Hall, Dunedin
 albumen print
 title inscribed and signed with artist's initials FAC
 138 x 182mm
\$100 - \$200



84

Burton Bros
Ohinemutu
 albumen print
 title inscribed and signed
 140 x 182mm
\$150 - \$250



85

Burton Brothers
Mount Torless from Castle Hill, West Coast Road
 albumen print
 title inscribed and signed
 140 x 180mm
\$150 - \$250



86

Burton Bros
George Sound
 albumen print
 title inscribed and signed
 140 x 182mm
\$100 - \$200



87

Burton Bros
Pembroke Peak – from Head of Milford Sound
 albumen print
 title inscribed and signed
 140 x 190mm
\$200 - \$400



88

Burton Bros
Lake Wanaka East
 albumen print
 title inscribed and signed
 140 x 180mm
\$150 - \$250



89

Burton Bros
Head of South Fjord – Lake Te Anau – From Delta Burn
 albumen print
 title inscribed and signed
 140 x 190mm
\$150 - \$250



90

Frank Coxhead
Shag Rock – Sumner, Christchurch
 albumen print
 title inscribed and signed with artist's initials FAC
 143 x 184mm
\$200 - \$400



91

Burton Bros (attributed)
Bowen Falls – Milford Sound
 albumen print
 title inscribed
\$200 - \$300



92

Burton Bros (attributed)
Queenstown
 albumen print
 title inscribed
 142 x 175mm
\$200 - \$300

Taonga Tūturu

Waka huia, hei tiki and important artefacts to be auctioned
at 1pm on Saturday May 26
3 Abbey Street Newton, Auckland

100| **Pre-European Maori papa hou [waka huia]**
(rectangular feather box). Stone tool carved. Robustly decorated to the underside with two female figures in opposing flexed stance, whose heads protrude from each end of the box and are pieced to enable suspension. The figures are carved with double spirals at the shoulders and knees, scythe shaped three fingered hands clasped to abdomens. The walls bear multiple asymmetrical layouts of ridging, apparently precursor to pakati notching, along with a single *whetu* head. The lid which sits in a rebate is similarly carved with un-notched ridging, spirals and a lanceolate motif. The interior accidentally pierced by a deep adze cut under one figures armpit. *Tai Tokerau* style. Y6630
Provenance: Purchased by Andrew Miet, Wellington from Sotheby's UK lot 110 11 July 1972 and repatriated to New Zealand. Purchased by current owner from Miet Collection auction, Dunbar Sloane Ltd, Wellington c.1985. Private Collection, Auckland
l.590mm, w.163mm, d.81mm
\$35 000-45 000
Illustrated inside front cover



110



107



106

103| **19th century patu paraoa** (whalebone hand club)
Spatula shape, of thin section at the blade distal edge thickening towards the shoulder, reduced grip, pierced with a countersunk thong hole, terminal triangular butt knob with four ridges
l.315mm, w.105mm
\$4500-5250

104| **Quadrangular toki (adze blade) of dark argillite**
Reducing slightly along the polished length and then dramatically at the pecked poll. Minute trauma chips to blade edge
l.220mm, w.53mm, d.35mm
\$1000-2000

105| **Pre-European hei tiki**
Auhunga variety *pounamu* (nephrite). Modelled with head angled, chin to left shoulder, semi-concealed hour-glass suspension hole, ring eyes inlaid with paua shell, hands to thighs. The (true) left side displays a rough fractured edge typical of early Maori lapidary
\$4000-7000

101| **Late 19th century Maori waka huia** (feather box)
Metal tool carved. Oval section, supported at each end by standing figures, carved over all surfaces excluding the underside. A band of *kowhaiwhai* (rafter pattern) arches across the top above sections to either side of the lid depicting *manaia* figures flanking a *koruru* head. The lower section with conjoined *rauru* spirals in two levels intersected by a mid-rib of *rauponga* carving. Inset with paua shell as eyes and as decorative rondels
Y6598
l.468mm, w.158mm, h.230mm
\$10 000-14 000
Illustrated inside front cover



106| **Contact period hei tiki**
Tangiwhai variety (bowenite). Modelled with head slightly angled with chin to left. Red wax inset ring eyes, hands to thighs. Metal suspension ring through hourglass hole piercing the forehead
h.105mm, w.59mm
\$3000-4000

107| **Contact period hei tiki**
Tangiwhai variety (bowenite). Modelled with head slightly angled with chin to left. Red wax inset ring eyes, hands to thighs. Countersunk hole piercing the forehead
h.97mm, w.58mm
\$3000-4000

108| **Pre-European patu onewa (stone hand club)**
Long spatula shape with reduced oval section grip with incipient piercing, flaring to a six ridged butt knob. Broken and re-glued blade
l.410mm, w.97mm
\$4500-5500

102| **19th-early 20th century waka huia** (feather box)
Oval section with closely fitted lid. Two handles modelled as *whetu* heads issue on short necks from the box and display greatly exaggerated protruding ovoid tongues. The lid is carved with mirrored *koruru* heads separated by two higher relief *whetu* heads with bifurcated tongues. The *whetu* head is again interpreted either side of the body of the box, raised on a ground of *rauponga* and other *pakati* notched designs. The ring eyes of all the heads are inset with serrated edged *paua* shell
l.515mm, h.155mm, d.148mm
\$5000-10 000
Illustrated inside front cover



104



114

105

109| **19th century patu paraoa** (whalebone hand club)
Thin section spatula shape with a medial rib, reduced at the grip and with an 'arrowhead' butt knob pierced with a countersunk thong hole. Affixed labels with typed inscription: 'Presented by Major C.W.H. Bailie of Manderston Duns.' and handwritten: 'BH112B'. Hugh Bailie was great grandfather of the current Earl Palmer of Manderston House, Duns, Scotland. The accession and presentation reference are to an unknown collection
l.375mm, w.95mm
\$4500-5500

110| **19th century carved pou (palisade post)**. c.1880
Unknown carver, ochre red paint finish. Robustly carved with a standing figure, with hands to chest
h.930mm
\$16 000-25 000

111| **Wooden handled, steel bladed patiti (hatchet)**
Dark stained timber haft with ridged butt knob pierced for a thong, closely fitted trade steel hatchet head with stamped mark 'John Riley & Sons'
l.300
\$2750-3250

IMPORTANT NOTICE Many items in this section are constrained under the Protected Objects Act 2006. Please refer to the Ministry of Culture and heritage website: www.mch.govt.nz/protected-objects/taonga.html for information and downloadable collectors forms. For extra images or condition report please contact ross@artandobject.co.nz

- 112

A small *pounamu* pendent and a scraper
pierced with suspension hole
l.30mm and 44 x 27mm
\$60-120
- 117

Toki (adze blade) of dark argillite
Quadrangular section with flaked and pecked reduced poll
Y11036
\$150-250
- 123

Unfinished *toki* (adze blade) of *pounamu* (nephrite)
Quadrangular section, irregular shape with traditional lapidary
groove running along one side Y11041
l.114mm
\$100-200
- 113

Small *pounamu toki* (nephrite adze blade)
Quadrangular with traditional lapidary marks to the side walls;
along with a quadrangular argillite adze blade
55 x 40 x 15 and 60 x 37 x 16mm
\$90-160
- 118

Pounamu amulet
Irregular crescent shape with serrated flutings to exterior edge
and double 'knife' bevel to the interior edge. Piered with a
suspension hole Y11035
66 x 48mm
\$1200-1500
- 124

Toki (adze blade) of *pounamu* (nephrite)
Quadrangular section, totoweka variety stone Y11042
l.95mm
\$200-300



- 114

Contact period *hei tiki*
Tangiwai (bowenite). Modelled with head turned, chin to left
shoulder, right hand to chest and left hand to thigh. Pierced for
suspension below left eye. Three small notches indicate hair at
the forehead apex Y11032
h.89mm, w.56mm
\$1750-2250
- 119

Toki (adze blade) of *pounamu* (nephrite)
Triangular shape, broken and restuck Y11038
l.110mm
\$200-300
- 125

Pa kahawai (trolling lure)
With whalebone shank faced with *paua* shell, flax lashed barbed
bone point, snood lashing complete with snood line attached
Y11046 l.94mm
\$1200-2000
- 115

Butt from a *patu onewa*
With conventional five ridged butt knob and hourglass worked
hole Y11033
l.107mm
\$450-500
- 120

Toki (adze blade) of *pounamu* (nephrite)
Quadrangular section Y11037
l.107mm
\$300-400
- 126

Pa kahawai (trolling lure)
With wooden shank faced with *paua* shell, flax lashed barbed
bone point, snood lashing complete with snood line attached
Y11045 l.94mm
\$1200-2000
- 116

Greywacke *mahe* (sinker stone)
With incised lashing scarf to circumference interrupted by a
raised nipple Y11034
d.56mm approx
\$80-120
- 121

Toki (adze blade) of *pounamu* (nephrite)
Quadrangular section, inunga variety stone Y11039
l.115mm
\$200-300
- 127

Toki (adze blade) of dark grey argillite
Quadrangular section, *totoweka* variety stone Y11043
l.150mm
\$125-200
- 122

Unfinished *toki* (adze blade) of *pounamu* (nephrite)
Quadrangular section Y11040
l.116mm
\$100-200
- 128

Carved wood *wahaika* (hand club)
Stained timber, carved with *rauponga* to the blade, a profile
wheku head to the edge and similarly as a butt knob
l.350mm, w.145mm
\$450-600

PART THREE

NZ items

Including Kiwiana and folk art
To be auctioned on Saturday May 26
3 Abbey Street, Newton, Auckland.



131



132



133



135



129



141



139



136

150

143



138



134

129 | **New Zealand colonial theatre make-up cabinet**
by Alfred Ingleson, Wellington. c.1863
With marquetry inlaid *trompe l'oeil* hinged cover enclosing a mirror, inset make up bowls and compartments above five small drawers with vari-coloured crossbanding, turned knob handles and carved corbels. The sides with carved interlaced strapwork. Raised on bracket feet with repeat lunette apron. Kauri carcass timber. Ingleson was scenic artist and props manager for a number of New Zealand operatic and dramatic companies
h.403mm, w.337mm, d.284mm
\$5000-6000

130 | **Blind Solomon, led by his wife on a Missionary Journey**
lithograph and hand colour on fine linen
the subject appears to be a reworking of George French Angus' study of Horomona Maruhau from *New Zealanders Illustrated* and subsequently a German publication of 11 plates illustrating missionary scenes. This large format image marked with ink stamp: *Published by Working Men's Educational Union. 48 Skinner St. Snow Hill, London, 1852*
1200 x 880mm
\$4000-5000

131 | **Marcus King**
Rata Blossom, Franz Josef Glacier
Colour lithographic poster
signed on the plate
Illustrated: Hamish Thompson, *Paste Up: A Century of New Zealand Poster Art* (Random House, 2003)
1010 x 634mm
\$3500-5000

132 | **Leonard Mitchell**
Mt Egmont, 8260ft
Colour lithographic poster for the Government and Tourist Department
signed on the plate
Illustrated: Hamish Thompson, *Paste Up: A Century of New Zealand Art* (Random House, 2003), p. 17
1003 x 660mm
\$3000-5000

133 | **Artist Unknown**
Waitomo Caves
Colour lithographic poster for New Zealand Railway Studios
997 x 593mm
\$3500-5000

134 | **Artist Unknown**
Wonderful Westland
Colour lithographic poster for New Zealand Railway Studios
1008 x 634mm
\$2500-4000

135 | **Artist Unknown** (Pictorial Publications)
New Zealand: The Angler's Paradise
Screenprinted poster
930 x 625mm
\$1500-2500

- 136|
|Folk art *whare whakairo*
Cast and painted plaster and timber
w.410mm, h.205mm, d.123mm
\$400-500
- 137|
|Folk art *whare whakiro* cased Junghams mantel clock
The case constructed utilising locking mortise techniques without nails. The *paepae* forming the initial locking bar
h.140mm, w.160mm, d.80mm
\$200-300
- 138|
|Two burr *totara* photograph frames. c.1900
One diamond shaped 375 x 375mm with an oval aperture 85 x 57mm. The other oblong 275 x 245mm again with oval aperture 87 x 60mm
\$800-1300
- 139|
|Burr kauri letter rack
Four graduated lunettes, conjoined at the base
Tallest h.150mm, smallest 65mm
\$400-600
- 140|
|Pair of ‘Sovereign’ New Zealand timber bookends.
c.1950s. Laminated blocks with routed cavities inset with carved *wheku* heads. Paper label under one
\$100-200
- 141|
|Carved kauri gum portrait bust of a Maori chief
h.100mm
\$500-650
- 142|
|Carved rimu and ply cased mantel clock
modeled as a *whare whakairo*
\$200-250
- 143|
|Poker-worked and painted shallow dish
Decorated with a rondel eyed *koruru tiki* head to the centre
d.214mm
\$80-120
- 144|
|NZ Centenary 1940 souvenir powder compact
Simulated greenstone finish, mounted with an enamel tiki
57 x 57mm
\$70-100
- 145|
|Kauri folk art frame
carved intaglio with thistles, shamrocks and a sunflower
Trefoil lunette shaped with a circular aperture
h.313, aperture d.102mm
\$150-200
- 146|
|Turned and carved Rotorua souvenir ware
pedestal wooden bowl
Stained and carved with *koruru* heads and *koro* patterns
h.185mm, d.210mm
\$150-200
- 147|
|Folk art walking stick
Carved by Japanese WWII POW at the Featherston, Wairarapa camp. With a snake entwining the shaft, embellished with roses and surmounted by a frog finial I.795mm
\$400-500
- 148|
|20th century candlewick cloak
With black woollen thrums and colourful woollen embroidery along with borders and bands of feathers
870 x 1170mm
\$1000-1500

- 149|
|New Zealand timbers writing slope
Marquetry inlaid to the top with a harbour scene, framed by parquetry inlays in various figured timbers and further to the sides. Kauri carcass. Fitted interior. Considerably distressed
\$400-600
- 150|
|Jane Brenkley folk art carved trinket box
The hinged lid carved with a *wheku* head with protruding tongue and *paua* inlaid eyes. The background and walls carved with *pakati* notching. The lid interior with a pokerwork lake scene. Signed and dated 1945
127 x 120mm, d.80mm
\$600-900
- 151|
|Jane Brenkley carved and painted trunk
The hinged lid with and sides with a profusion of flowers
675 x 420 x 360mm
\$3000-5000
- 152|
|Jane Brenkley poker-worked photo frame
Decorated with red and white flowers. Set with a photo of the craftswoman
210 x 155mm on angled plinth base
\$800-1200
- 153|
|Jane Brenkley carved and penwork platter
Decorated with a group of Maori women within a carved and stained high relief frame carved as *pohutukawa* flowers and leaves. Exhibition label verso.
345 x 235mm
\$800-1200
- 154|
|Jane Brenkley carved and poker-worked timber letter trough
With cottages and roses, applied colour and wallpaper. Signed and dated 1955.
w.280mm, h.140mm, d.240mm
\$400-600
- 155|
|Jane Brenkley folk art carved trinket box
With roses to the hinged lid and checked pattern with colour to the walls
w.255mm, h.145mm, d.155mm
\$300-500
- 156|
|Jane Brenkley poker-worked and coloured panel
Of two red breasted birds
220 x 165mm
\$400-600
- 157|
|John Philemon Backhouse
Views of Lake Taupo towards Ngauruhoe
Oil on shells
One signed with artist’s initials
170 x 190mm and 165 x 200mm
\$600-1000
- 158|
|Pitcairn Island souvenir carved bookstand
Modelled as a pair of hands issuing from a plinth base
h.120mm
\$150-200
- 159|
|An unusual New Zealand colonial firescreen
by May W Buick. Painted with scenes from Dunedin with a costal landscape to the background and the foreground with a castle. The side panels painted with nesting birds. Signed and dated 1900
h.790mm, w.800mm
\$2000-3000
- 160|
|Ruth Castle woven basket
squat circular vase form. Dark dyed rattan cane encrusted with seaweed. Unique design. c.1970s
d.270mm, h.220
\$150-200

- 161|
|Ruth Castle woven basket
squat circular form with inverted rim and spiralling centre
Natural 4mm Palembang cane. Unique design. c.1970s
d.470mm, h.130mm
\$150-200
- 162|
|Ruth Castle woven bowl
squat circular form with inverted rim. Dark dyed rattan cane and hemp. Unique design. c.1970s
d.310mm, h.110mm
\$150-200
- 163|
|Ruth Castle woven bowl
squat ovoid shape. Dark dyed rattan cane with meuhlenbeckia (*pohuehue*).Unique design. c.1970s
d.190mm, h.85mm
\$100-150
- 164|
|Bruce Martin, Kamaka Pottey
ovoid vase with flaring mouth
h.330mm
\$100-150
- 165|
|Three Chester Nealie ‘kina’ grass pots
Pigmented textured porcelain. Impressed with artists cipher
Provenance: Bruce and Estelle Martin collection
100 x 70, 10 x 60, 70 x 55mm
\$150-200
- 166|
|Two Chester Nealie ‘poison’ bottles
Glazed porcelain, with stopper and wood fired earthenware with shell marks and carbon entrapment
Provenance: Bruce and Estelle Martin collection
h.105, d.60mm and h.110, d.60mm
\$150-200
- 167|
|Peter Stitchbury pottery coffee pot
ovoid with carved design to the upper half. Iron and papa glaze
Impressed with artist’s cipher
Provenance: Bruce and Estelle Martin collection
h.230mm
\$80-120
- 168|
|Estelle Martin pottery figurine
Kamaka Pottery, c.1978. Thrown and formed. Feldspar glaze with yellow rutile decoration. Brush point signed ‘E’
Provenance: Bruce and Estelle Martin collection
h.285mm
\$120-150
- 169|
|Steven Scholefield, Rocket Pottery
high fired earthenware dish
Gold and blue surfaced, impressed with a pattern utilizing Theo Schoon’s plaster of Paris stamps. Impressed pottery mark, cipher and dated 2003. d.355mm
\$200-400
- 170|
|Two Chester Nealie chino glazed pots
Wood fired, the taller, ovoid with cup mouth and small shoulder handles, the smaller, mallet shaped with single lug handle
h.175mm and 110mm
\$400-500
- 171|
|Tony Keupfer for Glass Craft Studios
Cavetto-walled blue glass bowl
d.240mm, h.120mm
\$100 - \$150
- 172|
|Andrew van der Putten chino glazed lidded pot
Thrown and formed
h.200mm, d.135mm
\$75-125
- 173|
|Louise Rive, Edge City, hand built ceramic ‘couch’
Inscribed in brushpoint with gallery name, artist’s initials and dated 96.
w.140mm, h.95, d.85mm
\$100-200

Antiques + Decorative Art

Of the Modern Movement, Oriental Arts,
Objects de Vertu, Silver, Furniture
To be auctioned on Saturday May 26
3 Abbey Street, Newton, Auckland



174

195

182

198

197



189

186

185

188

187



175

206

203

204



193

180

200

194

179



199

177

202

212

183

230



191

196

190

- 174 | **William Moorcroft ovoid shoulder vase**
Eventide pattern. Impressed Cobridge factory marks and painted signature. c.1918-1926
h.215mm, d.120mm
\$6000-8000

- 180 | **William Moorcroft baluster vase**
Pansy pattern. Impressed Cobridge factory marks and painted initials. c.1925
h.175, d.125mm
glaze frit at foot
\$600-900

- 186 | **Macintyre Moorcroft scalloped mouthed slender vase**
Florian ware Poppies and forget-me-nots in panels. Printed factory mark and painted signature. c.1904-1913
h.250mm
\$3000-3500

- 175 | **William Moorcroft everted mouthed ovoid vase**
Claremont pattern. Impressed Cobridge factory marks and painted initials. c.1918-1929
h.213mm, d.195mm
\$6500-8000

- 181 | **William Moorcroft circular bowl**
Big Poppy pattern. Impressed Cobridge factory marks and painted initials. c.1925
d.142mm, h.50mm
\$800-1100

- 187 | **Macintyre Moorcroft screw lidded tobacco jar**
Florian ware Cornflower pattern with crest of Sidney Sussex College, Cambridge University to the lid. Marked inside the lid 'Sydney (sic) Sussex, M3030'. Printed factory mark. c.1911-13
d.145mm, h.100mm. Chipping to screw threads
Cf. <http://www.sid.cam.ac.uk/about/history.html>
\$4000-4500

- 176 | **William Moorcroft cylindrical vase with everted mouth**
Painted with a unique or rare pattern of fruit and leaves contained in reserved panels, along with leaves and berries rendered over the celadon ground. The panels reserved in white quatrefoil shapes. Shape M159. Impressed factory marks and painted signature. c.1914-1918
h.310mm, d.163mm
\$7000-9000

- 182 | **William Moorcroft two handled jardinière**
Late Florian pattern. Impressed Cobridge factory marks and painted signature. c.1918
h.172mm, w.260mm
\$7500-8500

- 188 | **William Moorcroft two handled jardinière**
Late Florian pattern. Impressed Cobridge factory marks and painted signature. c.1918
h.172mm, w.260mm
\$7500-8500

- 177 | **William Moorcroft squat baluster vase**
Moonlit Blue pattern. Impressed Cobridge marks and painted initials. c.1925.
h.80mm, d.100mm
\$800-1200

- 183 | **William Moorcroft commemorative beaker form tobacco jar and cover**
King Edward VIII Coronation May 1937. Impressed factory marks, facsimile signature and painted signature
h.165, d.115mm
\$1400-1800

- 189 | **Macintyre Moorcroft screw lidded potpourri jar**
Florian ware Poppies and roses in panels. Printed factory mark, retailer's mark and painted signature. c.1904-1913
d.145mm, h.100mm
\$1000-1500

- 178 | **William Moorcroft baluster vase**
Eventide pattern. Impressed Cobridge factory marks and painted initials. c.1918-1926
h.140mm, d.70mm
\$1500-2000

- 184 | **Walter Moorcroft spherical vase**
Orchid pattern, flambé glazed. Impressed factory marks and facsimile signature, painted initials. c.1945
h.150mm, d.142mm
\$2000-2500

- 190 | **William Moorcroft baluster vase**
Pomegranate pattern. Impressed shape number, printed: Made For Liberty & Co and signed. c.1906
h.295mm, d.120mm
\$1000-1500

- 179 | **William Moorcroft ovoid vase**
Big Poppy pattern. Impressed Cobridge factory marks and painted signature. c.1925
h.165mm, d.155mm
restoration
\$1500-2000

- 185 | **Macintyre Moorcroft slender necked baluster vase**
Florian ware. Acanthus and daisy pattern in pale blues
Printed factory mark and painted signature, c.1900
h.250mm, d.120mm
\$3000-3500

- 191 | **William Moorcroft inverse baluster vase**
Pomegranate pattern. Impressed Burslem factory marks and painted signature. c.1918-1929
h.310mm, d.140mm
\$2000-2500

192	<div></div> <div>William Moorcroft inverse baluster vase</div> <div><i>Pomegranate</i> pattern. Impressed factory marks and painted initials. c.1929</div> <div>h.185mm, d.90mm</div> <div>\$650-800</div>	205	<div></div> <div>Macintyre biscuit barrel</div> <div>Frieze of flowers slip trailed and slip carved.</div> <div>Possibly by Harry Barnard. Printed factory mark. c.1987</div> <div>h.160mm, d.155mm</div> <div>\$750-1000</div>	218	<div></div> <div>Two Moorcroft miniature vases</div> <div>One baluster <i>Poppy</i> pattern, one ovoid Orchid pattern. c.1970s</div> <div>h.55mm and h.52mm</div> <div>\$100-200</div>
193	<div></div> <div>Two handled vase in the manner of Moorcroft</div> <div>In the manner of Aurelian ware with tulips and other flowers, painted and gilded with slip trailing on salmon and blue grounds</div> <div>Unmarked. c.1900</div> <div>h.170mm, d.170mm</div> <div>\$1500-2000</div>	206	<div></div> <div>Walter Moorcroft baluster vase</div> <div><i>Clematis</i> pattern, flambé glazed Impressed factory mark, facsimile signature, Royal Warrent paper label and painted initials</div> <div>c.1945-1949</div> <div>h.240mm, d.150mm</div> <div>\$1500-2000</div>	219	<div></div> <div>Walter Moorcroft small dish</div> <div><i>Clematis</i> pattern. Royal Warrent paper label. c.1953-1978</div> <div>d.77mm</div> <div>\$80-120</div>
194	<div></div> <div>William Moorcroft baluster vase</div> <div><i>Leaf and Berry</i> pattern. Impressed factory marks, facsimile signature and painted signature. c.1928-1949</div> <div>h.175mm , d.130mm</div> <div>\$800-1100</div>	207	<div></div> <div>Walter Moorcroft footed circular bowl</div> <div><i>Leaf and Berry</i> pattern. Impressed factory marks, facsimile signature and painted initials. c.1945-1949</div> <div>d.212mm, h.100mm</div> <div>\$2000-2500</div>	220	<div></div> <div>William Moorcroft Plate</div> <div><i>Wisteria</i> pattern. Impressed factory marks and painted initials</div> <div>c.1918-1929</div> <div>d.165mm</div> <div>\$200-275</div>
195	<div></div> <div>William Moorcroft ovoid vase</div> <div><i>Pomegranate</i> pattern. Impressed Cobridge Burslem factory mark and painted signature. c.1916</div> <div>h.160mm, d.130mm</div> <div>\$800-1100</div>	208	<div></div> <div>Walter Moorcroft circular bowl</div> <div><i>African Lily</i> pattern. Impressed factory marks, facsimile signature and painted initials. c.1945-1949</div> <div>d.225mm, h.70mm</div> <div>\$500-600</div>	221	<div></div> <div>William Moorcroft circular bowl</div> <div><i>Leaf and Berry</i> pattern. Impressed factory marks. c.1928-1949</div> <div>d.135mm, h.65mm</div> <div>\$400-500</div>
196	<div></div> <div>Walter Moorcroft large spherical vase</div> <div><i>Anenome</i> pattern. Impressed factory mark, facsimile signature and painted initials. c.1945-49</div> <div>h.270mm, d.250mm</div> <div>\$1750-2250</div>	209	<div></div> <div>William Moorcroft circular bowl</div> <div><i>Pomegranate</i> pattern. Impressed factory marks and painted initials. c.1918-1929</div> <div>d.205mm, h.65mm</div> <div>\$600-800</div>	222	<div></div> <div>Macintyre Moorcroft small squat circular barrel</div> <div><i>Florian Ware, Poppy</i> pattern. Printed marks and painted initials</div> <div>c.1900</div> <div>d.115mm, h.63mm</div> <div>\$400-500</div>
197	<div></div> <div>William Moorcroft inverse baluster vase</div> <div><i>Pomegranate</i> pattern. Impressed factory marks and painted signature. c.1916</div> <div>h.230mm, d.115mm</div> <div>\$1000-1500</div>	210	<div></div> <div>William Moorcroft small mallet bodied vase</div> <div><i>Pomegranate</i> pattern. Impressed factory marks and painted signature. c.1916-1918</div> <div>h.143mm, d.80mm</div> <div>\$600-800</div>	223	<div></div> <div>Walter Moorcroft circular bowl</div> <div><i>Coral Hibiscus</i> pattern. Impressed marks and painted initials</div> <div>Monogram for Angela Scoffins. c.1986-1989</div> <div>d.160mm, h.72mm</div> <div>\$175-225</div>
198	<div></div> <div>Walter Moorcroft ovoid vase</div> <div><i>Orchid</i> pattern. Impressed factory marks and painted initials. c.1950</div> <div>h.160mm, d.130mm</div> <div>\$800-1100</div>	211	<div></div> <div>William Moorcroft cylindrical jar and cover</div> <div><i>Leaf and Berry</i> pattern. Impressed factory marks and Royal Warrant paper label. c.1928-1936</div> <div>h.92mm, d.87mm</div> <div>reglued rim chip</div> <div>\$90-150</div>	224	<div></div> <div>Walter Moorcroft circular dish</div> <div><i>Hibiscus</i> pattern. Impressed marks and painted initials. c.1970s</div> <div>d.215mm</div> <div>\$125-175</div>
199	<div></div> <div>William Moorcroft ovoid vase</div> <div><i>Anemone</i> pattern. Impressed factory mark and facsimile signature, painted initials.c1928-1945</div> <div>h.155mm, d.100mm</div> <div>\$500-700</div>	212	<div></div> <div>William Moorcroft small ovoid vase</div> <div><i>Wisteria</i> pattern, flambé glazed. Impressed factory marks and painted initials. c.1918-1926</div> <div>h.90mm, d.75mm</div> <div>\$400-600</div>	225	<div></div> <div>Walter Moorcroft table lighter</div> <div><i>Anemone</i> pattern. Impressed factory marks.c. 1970s</div> <div>h.110mm, d. 80mm</div> <div>\$80-120</div>
200	<div></div> <div>William Moorcroft slender necked baluster vase</div> <div><i>Pansies</i> pattern. Impressed factory marks and painted signature</div> <div>c.1916</div> <div>h.205mm, d.90mm</div> <div>\$600-800</div>	213	<div></div> <div>William Moorcroft footed ovoid vase</div> <div><i>Clematis</i> pattern. Royal Warrent paper label. c.1953-1978</div> <div>h.90mm, d.77mm</div> <div>\$125-200</div>	226	<div></div> <div>Walter Moorcroft oval cigarette container</div> <div>Hibiscis pattern. Impressed factory marks c. 1970s</div> <div>h.60mm</div> <div>\$80-120</div>
201	<div></div> <div>Walter Moorcroft squat baluster vase</div> <div><i>Clematis</i> pattern. Impressed factory mark, facsimile signature and painted initials. c.1945-1949</div> <div>h.105mm, d.135mm</div> <div>\$400-500</div>	214	<div></div> <div>William Moorcroft small squat baluster vase</div> <div><i>Pansies</i> pattern. Impressed marks and facsimile signature</div> <div>c.1928-1949</div> <div>h.65mm, d.80mm</div> <div>\$100-150</div>	227	<div></div> <div>Walter Moorcroft lidded ovoid ginger jar</div> <div>Toadstool pattern. Printed marks c. 1990</div> <div>h.155mm, w.120mm</div> <div>\$200-275</div>
202	<div></div> <div>Walter Moorcroft mallet form vase</div> <div><i>Pomegranate</i> pattern. Impressed factory marks and painted initials. c.1949-1986</div> <div>h.150mm, d.135mm</div> <div>\$600-750</div>	215	<div></div> <div>William Moorcroft small ovoid, everted mouthed vase</div> <div><i>Anemones</i> pattern. Impressed marks and facsimile signature</div> <div>c.1928-1949</div> <div>h.115mm, d.75mm</div> <div>\$200-275</div>	228	<div></div> <div>William Moorcroft circular footed tazza</div> <div>Flamminian ware. Orange. Impressed factory marks, c. 1918-1929</div> <div>d. 190mm, h. 150mm</div> <div>\$300-400</div>
203	<div></div> <div>Walter Moorcroft Inverse baluster vase</div> <div><i>Clematis</i> pattern, flambé glazed Impressed factory mark, facsimile signature and painted initials. c.1945-1949</div> <div>h.255mm, d.130mm</div> <div>\$1800-2200</div>	216	<div></div> <div>William Moorcroft small inverse baluster vase</div> <div><i>Pomegranate</i> pattern. Impressed factory marks and shape number. c.1918-1926</div> <div>h.97mm, d.55mm</div> <div>\$300-400</div>	229	<div></div> <div>William Moorcroft squat circular vase</div> <div>Flaminian ware. Orange. Impressed Factory marks, c. 1918-1929</div> <div>d.150mm, h.100mm</div> <div>\$200-300</div>
204	<div></div> <div>Walter Moorcroft baluster vase</div> <div><i>Clematis</i> pattern Impressed factory mark, facsimile signature and painted initials. c.1945-1949</div> <div>h.355mm, d.150mm</div> <div>\$650-900</div>	217	<div></div> <div>William Moorcroft small inverted rimmed dish</div> <div><i>Moonlit Blue</i> pattern. Impressed factory marks and shape number</div> <div>c.1922-1926</div> <div>d.95mm, h.32mm</div> <div>\$500-650</div>	230	<div></div> <div>Walter Moorcroft ovoid vase</div> <div><i>Clematis</i> pattern. Impressed factory mark, facsimile signature and painted initials. c.1945-1949</div> <div>h.160mm</div> <div>\$450-600</div>

Modern Movement



231| **Rene Lalique opalescent cylindrical vase**
c.1926-1935
Danaïdes
Engraved signature and etched No. 972
h.185mm, d.145mm
\$6000-7000

236| **Otakar Steinberger**
Gypsy Dancer
Chryselephantine statuette, ivory and bronze with gilded and silvered patina
Signed and dated 1920
h.595mm
\$8000-10 000

232| **Rene Lalique opalescent glass flaring**
Beaker vase, c.1930
St Francois
Etched signature, foot ring chip
h.177mm, d.170mm
\$5000-6000

237| **Samuel Lipchitz**
Columbine
Cold painted bronze statuette
Signed, c.1930
h.217mm
\$2200-2600

233| **Claire Jean Robert Colinet**
Egyptian Dancer
Chryselephantine statuette, ivory and bronze with cold painting, raised on striated black marble plinth
Cf. Bryan Catley Art Deco and Other Figures, pg 116
h.310mm
\$6000-8000

238| **Royal Doulton Arts and Crafts pattern squat ovoid vase**
Glazed in panels of cobalt, pale oyster and pale amber
Impressed factory mark and numbers
h.200, d.210mm
\$900-1100

234| **Rene Lalique red amber glass vase**
Serpent
Moulded signature R Lalique
The body of the snake coils around the vessel forming almost a sphere, the tapering vase mouth issuing above the serpents head
Marchilac catalogue number 896. Issued 1924
h.245mm, d.245mm
\$5000-6000

239| **Beswick ware monkey figure**
Cream satin matt glaze. Designed by Owen. Printed factory mark, impressed No. 397. C.1936-1954
h.185mm
\$225-300

235| **Rene Lalique blue tinted glass car mascot**
Coq Nain
Moulded relief signature R Lalique, France.
Ceylonese sapphire blue tint. Marchilac catalogue 1135
Introduced 1928
h.200mm
<http://www.finesse-fine-art.com/Lalique/lalart.htm>
\$4500-5500

240| **John Skeaping for Wedgwood study of two monkeys**
Matt white glaze. Printed factory marks, impressed artist's name
w.190mm, h.170mm
\$700-900

241| **John Skeaping for Wedgwood. Lioness and prey**
White glaze. Printed factory marks, impressed artist's name
w.340mm, h.195mm
\$900-1200

242| **John Skeaping for Wedgwood. Buck**
Matt bronze. Impressed factory marks, dated 1954
w.170mm, h.120mm
\$1000-1400

243| **John Skeaping for Wedgwood. Polar bear**
Matt white glaze. Printed factory marks, impressed artist's name
w.280mm, h.185mm
\$650-950

244| **American table lamp in the manner of Philip Handel**
Cold painted spelter bronze, classical style vase shaped base supporting a hexagonal milk agate glass shade concealing two light fittings
h.515mm, d.370mm
\$1500-1750

245| **Keith Murray for Wedgwood lathe turned ovoid vase**
Moonstone glaze . Printed factory marks
h.145mm, d.100mm
\$300-400

246| **Keith Murray for Wedgwood. Lathe turned coffee pot**
Moonstone glaze. Impressed and printed marks, c.1955
h.200mm
\$400-500

247| **Keith Murray for Wedgwood. Pen tray and inkstand**
Matt green. Impressed and printed marks and facsimile signature
h.85mm, w.240mm
\$800-900

248| **Keith Murray for Royal Brierley**
Large thick-walled amethyst beaker form vase with myriad of included bubbles
Acid etched factory mark and facsimile signature
h.317mm, d.170mm
\$600-800

249| **Keith Murray for Royal Brierley**
Thick-walled ovoid pink glass vase with myriad of included bubbles. Etched factory mark and facsimile signature
h.200mm, d.100mm
\$800-1200

250| **Keith Murray for Royal Brierley**
Thick-walled squat clear baluster vase with myriad of included bubbles. Etched factory mark and facsimile signature
h.150mm, d. 105mm
\$600-800

251| **Wedgwood Clarice Cliff Bizarre Affair Collection Yo Yo vase**
Blue Firs pattern, shape 379. Number 167 of an edition of 200 for the Clarice Cliff Collectors Club, 1998
Printed factory marks, boxed, edition certificate
h.230mm
\$600-900

252| **Wedgwood Clarice Cliff Bizarre Affair Collection stepped cylindrical vase**
Rudyard pattern, shape 366. Number 99 of an edition of 200 for the Clarice Cliff Collectors Club, 1998
Printed factory marks, boxed, edition certificate
h.150mm
\$600-900

253| **Royal Doulton Radiance pattern coffee pot**
D5421. Art Deco cylindrical shape with green and black banded decoration
\$60-90

254| **Charlotte Rhead two handled vase**
Ovoid shape with encircling ridging, decorated with tube lined floral designs. Printed factory marks, signature and impressed number. The pattern exhibited British Trade Fair, 1936
h.185mm, d.185mm
\$650-850

255| **Charlotte Rhead circular charger**
Decorated with tube lined concentric bands painted with stylized motifs and a leafy vine. Printed and painted factory marks
d.362mm
\$650-850

256| **Charlotte Rhead small basket vase**
Decorated with tube line florals
\$90-150

257| **Wadeheath Art Deco shouldered vase**
Painted in bright enamels with floral and geometric designs
Printed, painted and impressed marks. c.1930
h.200mm, d.142mm
\$100-150

258| **Crown Devon. Art Deco wall plaque**
Painted in bright enamels with landscape and figures
Printed factory marks, c. 1940
d.300mm
\$500-700

259| **Carlton ware Art Deco 'jewelled' enamelled plate**
Canterbury Bells pattern. c.1930
d.230mm
\$300-350

260| **Carlton ware ewer jug**
Decorated with trees on a celadon glazed ground
Printed and painted marks. c.1935
h.170mm
\$100-150

261| **Clarice Cliff octagonal plate**
Honey glazed. Autumn Flowers
d.250mm
\$100-150

262| **Two Royal Doulton plates**
Decorated with lyre birds
\$150-200

263| **Elizabeth Radford ashtray**
modelled with a frog
\$125-175

264| **Shelley china ovoid vase**
With drizzle glazes
\$90-140

265| **German jugendstil pottery bowl by Frederich Festersen**
Squat circular with looped shoulder handles, decorated with sponged peacock feathers d.165
\$100-150



266| **German jugendstil pottery vase by Frederich Festersen**
baluster, decorated with sponged peacock feather rondels on blue ground h.210mm
\$150-200

267| **Iridescent blue glass beaker vase attributed to Loetz**
h.145mm, d.130mm
\$500-600

268| **Art nouveau green iridescent tulip vase**
Reduced height
h.230mm, d.115mm
\$100-200

269| **Short necked bottle vase in the manner of Palme Konig**
Reduced height. h.215mm
\$100-200

270| **Iridescent glass ewer in the manner of Quezl**
Sinuous pulled handle. Ground pontil
h.185mm, d.120mm
\$400-500

271| **1920s iridescent glass circular bowl**
d. 190mm, h. 60mm
\$20-30

272| **Art Nouveau glass and gilt metal centrepiece**
of lily pad and flower form, maximum w.470mm
\$350-450

273| **Emile Gallé cameo glass vase**
Floral decorated in green on a pink ground
h.80mm, d.55mm
\$400-500

274| **Rene Lalique squirrel**
Amber tinted frosted glass. Etched signature, c. 1930, h.110mm
\$500-550

275| **A pair of Katzhut porcelain figures**
of male and female skiers, c.1950, h.290mm
\$1000-1200

276| **WMF silver plated quatrefoil basket**
With pierced walls and swing handle. 240 x 240mm
\$100-125

277| **WMF brass basket with glass liner**
Fixed handle and frame decorated with Nouveau medallions
265 x 150mm, h.170mm
\$125-175

278| **WMF Art Nouveau copper sugar box and cream jug**
Embossed plaquettes decorating the tapering cylindrical bodies
\$100-150

279| **An Art Nouveau brass cylindrical cigar box**
Embossed to the side with three 'Glasgow' roses. Impressed factory mark under base. The finial with a cigar cutter blade
h.127mm, d.90mm
\$200-275

280| **Pair of German slip cast porcelain Art Deco figured bookends**
Modelled as seated nude figures
h.175mm, w.150mm each
\$200-300

281| **Royal Doulton Titanian vase**
Cylindrical shape. blue-green ground overlaid in raised gilt with fine ferns, a cobweb and moths. Printed factory marks and impressed date 1907, h.225mm, d.97mm
\$450-800

PART FOUR

Objects de Vertu

- 282

Two Lalique green glass fish
impressed marks
\$300-400
- 283

Lalique frosted glass sparrow
Etched mark
\$125-150
- 284

Sterling silver capped green glass perfume bottle
Hallmarked Chester 1900. In original case
h.62mm
\$200-275
- 285

Pair of miniature Delft tin glazed boots
\$50-100
- 286

French champlevé enamel and alabaster
chamber stick
Gilded copper and predominately turquoise enamels.
\$250-300
- 287

Pair of early Georgian period shoe buckles
Pinchbeck gold framed fine dark brown leather panels with
sinuous rope and facetted jewel borders. Blued steel backs with
sprung toothed clasps. In original box . Labelled underneath
'Shoe buckles belonging to Sir Alexander Douglas () of (),
'The Antiquary'.
\$300-400
- 288

Six Limoges style porcelain oval plaques
Painted with flowers within a bleu céleste and gilt border.
Largest 69 x 55m
\$80-120
- 289

Set of six sterling silver buttons
Each embossed with Eros awakening Aphrodite. Birmingham
hallmarks 1907. In original case with Stewart Dawson retailers
mark inside lid
d.30mm each
\$300-500
- 290

French silver vesta
Embossed en japonais with spider chrysanthemums
\$100-150
- 291

Gilt metal framed swivel fob seal with unusual
intaglio crests
Recto an arrow pierced erect penis and verso arrow pierced
conjoined hearts
\$100-125
- 292

Gold or gold plated double sided locket
The finely chased and engraved hinged covers opening alternate
ways to reveal a central locket glazed to either side. Oval shape
on 'watch' suspender 43 x 36mm
\$125-250
- 293

18ct gold engraved cased lady's pocket watch
Key wind movement, engraved: *G & J Young, Dunedin 86574*
Etched open face with Roman numerals
\$400-500
- 294

Fine silver cased lady's pocket watch
Open face, enamel dial, keywind movement
\$60-100
- 295

Small sterling silver George IV vinaigrette
Birmingham 1824. Maker TN
\$250-300
- 296

Victorian sterling silver purse shape vinaigrette
Birmingham 1880
\$200-250
- 297

George IV sterling silver vinaigrette
Birmingham 1824. Maker TN
\$150-200
- 298

Two sterling silver envelope shape stamp holders
Chester 1916
\$100-150
- 299

Three sterling silver bookmarks
Two with amethyst glass thistle finials the other with a shell
inlaid shamrock finial
\$125-150
- 300

A miniature sterling silver mirror,
button hook and tweezers
\$60-80
- 301

Sterling silver pendent compact
With guilloche green enamel panelled lid
\$50-80
- 302

Sterling silver cylindrical lidded pill box
The lid studded with turquoises
\$50-80
- 303

Sterling silver Art Nouveau buckle
Pierced with a tulip design
\$40-60
- 304

Five tie tacks set with various semi-precious
stones, pearl, etc...
\$100-150
- 305

Bone or ivory 'Stanhope' *Tombeau de Napoleon*
Modelled as a furled parasol. Small chips
l.120mm
\$125-175
- 306

Bone or ivory 'Stanhope' *Memory of Brighton*
Modelled as a furled parasol. Small chips
l.130mm
\$125-175
- 307

Bone or ivory 'Stanhope' needle case
Memory of Bridlington Quay, Dublin
l.87mm
\$125-175
- 308

Bone or ivory 'Stanhope' needle case. Paris
l.135mm and another, magnifier absent
\$125-175
- 309

Sterling silver squat circular pill box
With enamel panelled lid decorated with flowers
\$50-80
- 310

Sterling silver pin cushion
Modelled as a pug dog. Birmingham 1907
h.51mm
\$400-500
- 311

Sterling silver pin cushion
Modelled as a camel. Birmingham 1908
h.52mm
\$300-400
- 312

Sterling silver pin cushion
Modelled as an elephant. Birmingham 1905
h.40mm
\$250-350
- 313

Sterling silver pin cushion
Modelled as a hare. Birmingham 1908
l.55mm
\$200-300
- 314

Sterling silver miniature model of a boot
\$50-80
- 315

Four bone or ivory lace bobbins and a needle case
\$150-200



- 316|
|**Sycamore wood Mauchlin ware cotton reel holder**
Decorated with a vignette of Bridport Harbour
h.50mm, d.35mm
\$80-120
- 317|
|**Chinese ivory needlework spindle reel clamp**
Carved with figures in a garden with pavilions
h.105mm
\$125-175
- 318|
|**Victorian sterling silver sovereign case**
\$150-200
- 319|
|**Two Chinese bronze coin medallions**
\$40-80
- 320|
|**Georgian tortoiseshell and sycamore snuff box**
With a portrait miniature painted on ivory to the lid
d.65mm, h.30mm
\$300-400
- 321|
|**Small Georgian papier maché snuff box**
l.57mm, w.37mm, d.26mm
\$125-175
- 322|
|**Georgian rosewood snuff box**
The hinged lid inlaid with a silver four leaf clover
l.77mm, w.40mm
\$100-150
- 323|
|**Tortoise shell veneered cigarette box**
Mahogany lined, applied ‘Cigarettes’ in 9ct gold to the hinged lid
l.195mm, w.105mm, d.57mm
\$200-400
- 324|
|**Silver plated Art Deco sprung pickle tongs**
\$20-40
- 325|
|**Sterling silver pair cased pocket watch**
Key wind movement inscribed: *Reynolds, Holsworthy, 36066*
Case hallmarked London 1842
\$100-150
- 326|
|**French official's stamp in silver plated case on chain**
Controle Gnl De La Main-D'Oevre Agricole Militaire
\$200-250
- 327|
|**French ivory and polished steel small purse**
The interior with blue material accordion lining
The cover inset with a gold shield shaped escutcheon
l.77mm
\$150-200
- 328|
|**Pair French silver plate lorgnettes**
On jet and crystal bead necklace
\$150-200
- 329|
|**Brass wax vesta holder modelled as a pipe smoking skull**
\$50-80
- 330|
|**Japanese rosewood skull netsuke**
Two character signature to the back above the himotoshi
\$50-80
- 331|
|**Tobacco pipe carved as an elephant's head**
Along with a meerschaum and amber cigar holder and a bone cigarette holder
\$100-150
- 332|
|**Georgian sterling silver vinaigrette**
Engraved to the lid Amitie
\$200-250
- 333|
|**French silver circular powder box**
\$50-80

PART FOUR

Silver

- 334|
|**Composite suite of 19th century French table silver**
Comprising two double condiments, a sweetmeats box and two mustard pots. All designed with open frames to display the blue glass liners, those of the mustards absent. Decoratively embellished with acanthus cappings and classical scrolls and ribbons
\$1000-1500
- 335|
|**French silver individual coffee pot**
Baluster shaped, decorated with punch work étoile pattern, monogram engraved to side
h.130mm
\$200-300
- 336|
|**French silver tea pot**
Squat circular shape raised on circular foot
\$150-200
- 337|
|**French Art Nouveau silver oval dish**
The shallow well framed by a broad rim edged with floral cartouches amongst sinuous stems
l.420mm, w.280mm
\$400-500
- 338|
|**Walker & Hall sterling silver oval tray**
Sheffield 1937. Serpentine rimmed with integral handles
560 x 375mm
\$600-700
- 339|
|**Liberty & Co Cymric sterling silver three piece tea set**
Hallmarked for Birmingham 1904. The pot of circular Arabian oil lamp form with a cane bound handle and press fit lid, the sugar basin conforming with two whiplash handles to the shoulder and the milk jug similarly
\$1000-1300
- 340|
|**Three souvenir spoons**
Silver, silver gilt and EPNS. Royal visit NZ 1953, NZ (1903), Sydney (c.1921)
\$40-80
- 341|
|**Two sterling silver copies of the English royal anointing spoon**
Both Birmingham 1936
\$40-60
- 342|
|**Cased sterling silver jam spoon and butter knife**
Birmingham 1904. Mother o’pearl handled
\$60-100
- 343|
|**Six American sterling silver forks**
c.1910
\$150-200
- 344|
|**Silver table spoon, pickle fork and fiddle pattern ladle**
\$30-60
- 345|
|**German silver bonboniere**
Oval shape raised on four legs and with side handles. Impressed marks, 800 silver
w.140mm
\$50-100
- 346|
|**Sterling silver basket**
Oval with pierced walls, raised on ball feet. Birmingham 1922
l.205mm, w.105mm, d.65mm
\$150-200

- 347|
|**Six silver table spoons and matching forks**
The stems decorated with thistle leaves and flowers
Marked Boulanger and Blanc 84
\$600-900
- 348|
|**19th century French silver sifter spoon**
With scallop shell shaped bowl, the handle with wiggework engraved Greek key pattern
\$100-200
- 349|
|**Six French silver teaspoons**
Double struck, Albert style pattern
\$100-150
- 350|
|**Six Victorian sterling silver teaspoons**
Fiddle pattern, by George Angel. Monogrammed
\$120-180
- 351|
|**Part set of Continental silver cutlery**
Comprising 80 pieces
\$400-800
- 352|
|**Brass bound ebony dressing case**
Fitted with French silver topped toilet jars and ivory backed brushes. Incompletely fitted and some damage ot the brass stringing
\$400-500
- 353|
|**Sterling silver Victorian teapot and sugar basin**
By Martin Hall & Co, Sheffield hallmark 1860. Spherical raised on circular spreading foot, embossed with fruit and C-scrolls
\$800-1000
- 354|
|**Two sterling and one other silver fiddle pattern salt spoons**
c.1828 along with a mother of pearl handled pen knife
\$90-130
- 355|
|**Sterling silver teapot**
Walker & Hall, Sheffield hallmark 1921. Presentation engraved
\$200-250
- 356|
|**Sterling silver mustard pot, salt cellar and pepperette**
London 1937 by the Goldsmiths and Silversmiths Co.
\$200-275
- 357|
|**Pair of unmarked Continental silver candlesticks**
Engraved with a crest of a boar’s head issuing from a ducal coronet h.295mm
\$800-1000
- 358|
|**Pair of silver metal vase based table lamps**
\$250-300
- 359|
|**A Victorian cut glass claret jug**
With sterling silver mounts and dragon form handle
London 1887. Chipped to the foot rim
h.280mm
\$100-200
- 360|
|**A group of small silver items**
comprising a milk jug, tea strainer two castors and bon bon dish
\$100-150
- 361|
|**Two Continental 900 silver lidded boxes and a bon bon dish**
\$100-200

Ceramics + Glass

362|**French faience cat in the manner of Emile Galle**
c.1880. Yellow tin glaze with cobalt and white hearts, rondels and rabbit head motifs decorating it's body and highlighting it's whiskers ears and tail. Applied green glass eyes
h.310mm, w.210mm
\$1500-2000

363|**Pair of Portuguese Palissy ware ewers in the manner of José Cunha**
baluster shape with giant majolica glazed lizards forming the handles, the bodies covered in sprigged grass and applied with numerous lizards, frogs, butterflies and snakes
Cf. www.palissy.com/PPVW_article.html
h.360mm, d.200mm
\$2000-3000

364|**18th century Wedgwood black basalt jardinière**
Decorated with Lion masks and vine swags along with sprig figures representing the dramatic arts. Impressed factory mark and numerals
h.160mm, d.175mm
\$2500 - 3000



365

365|**Rare Royal Doulton figure HN43**
A Woman of the Time of Henry VI
Designed by EW Light, issued 1914 -1938
Printed factory mark, painted title, designer's signature, and factory numbers
Cf. Charlton Standard Catalogue [Jean Dale] *Royal Doulton Figurines* - HN Series, page 29 "only three known"
h.235mm
\$10 000-15 000

366|**Staffordshire figurative toby jug of Admiral Lord Nelson**
Standing with empty sleeve pinned to his waistcoat, before a short barrelled cannon h.295mm
\$1500-1700

367|**Victorian Staffordshire equestrian figure of Charles I**
With restrained gilt highlighting to his costume and the horse's trappings
h.270mm, w.215mm
\$250-350

368|**Three Victorian Staffordshire graduated spaniel ornaments**
Painted amber eyes. Moulded with collars and chains and with gilded decoration. Moulded numbers under the middle sized dog (2) and the smaller (3)
h.300mm, 245mm and 210mm
\$650-850

369|**Victorian Staffordshire cottage**
Brightly decorated and with multi-coloured trim
Small part of the trim missing h.155mm
\$80-120

370|**Rare Staffordshire figure: Napoleon Crossing the Alps**
The potter's version of the painting by the French artist David Well coloured
h.175mm
\$500-600

371|**Small Victorian Staffordshire figure group of a piper and dancer**
In colours, with indigo jackets h.160mm
\$160-200

372|**Unusual Victorian Staffordshire quill holder**
Modelled in the form of a bird's nest with a snake about to take the eggs. Bird repaired h.75mm
\$150-200

373|**Pratt ware campana goblet urn vase**
Decorated with a frieze of Dionysian adherents presenting offerings before a statue of the god. Further enhanced with Grecian classical borders to the black ground. Unmarked
19th century h.215mm, d.150mm
\$300-400

374|**Hadley's Worcester porcelain jardinière**
Painted with pink and yellow roses in the manner of Millie Hunt
And painted factory marks d.130mm, h.105mm
\$500-550

375|**Royal Vienna porcelain plate**
Transfer decorated central panel with an allegorical scene, framed by a gilt and cobalt border d.217mm
\$100-150

376|**Late 18th century famille rose Chinese porcelain punch bowl**
With castellated ormolu frame to the rim. Considerably damaged and re-stuck
d.355mm, h.160mm
\$400-500

377|**Moulded majolica two handled oval plate**
\$50-80

378|**Two large Royal Doulton underglaze blue painted vases**
Ovoid, one decorated with a young Breton woman, the other with a French guitar player. Each with printed gilt Paisley lace pattern over cobalt at the neck. Printed factory marks
h.375mm, d.180mm
\$3750-4000

379|**Royal Doulton plate painted by EM Burrows**
With a thatched English cottage within a gilt and cobalt border
Printed and impressed factory marks
d.260mm
\$200-250

380|**Beswick model of a leopard**
Printed marks. Designed by Arthur Gredington, shape 1082
c.1946-1975
l.295mm
\$300-400

381|**Beswick model of a cougar**
Printed and impressed marks, shape 1702
l.320mm
\$100-200

382|**Royal Winton tall ewer vase**
Modelled as the strap leaves and flowers of irises
h.380mm
\$150-200

383|**Royal Winton Lakeland pattern plate**
d.125mm
\$150-200

384|**Two green glazed pottery plates moulded with vine leaves**
\$100-150

385|**18th century English porcelain tea bowl and saucer**
In the manner of New Hall Potteries, painted with various flowers
\$150-200

386|**Framed pot lid 'Cries of London, Primroses - Yellow Primroses'** d.142mm
\$80-120

387|**Four china pot lids in timber frames**
Dr Johnson; Pegwell Bay; and two French scenes
\$175-225

388|**Royal Stanley ware Jacobean pattern bowl**
d.160mm, h.80mm
\$80-120

389|**Pair of Sampson of Paris porcelain cabinet plates in the manner of Chelsea**
Painted to the centre with exotic birds, within a moulded trellis border. Gold anchor mark d.240mm
\$400-600



364

390|**Royal Doulton figure group, HN1429** *The Gossips*
Designed by Leslie Harradine. Issued 1930 - 1949
Printed factory marks , painted title, and HN number
Cf. Charlton Standard Catalogue [Jean Dale] *Royal Doulton Figurines* - HN Series, page 129' w.205mm, h.150mm
\$1000-1500

391|**Pair of Dresden style porcelain figures**
Losses and chips
\$200-250

392|**Large porcelain Royal Dux figure of an Arabian women**
Modeled standing with a water amphora beside a palm tree
Printed factory mark to the underside of the base h.930mm
\$1500-2000

393|**Rosenthal porcelain model of a hound**
Portrayed seated. Printed and impressed factory marks
w.112mm, h.59mm
\$100-150

394|**Pair English blown moulded 19th century glass urn vases**
Purple agate exterior, white interior h.180mm, d.90mm
\$250-325

395|**Three pieces of English pressed glass**
A purple basket, a malachite triangular section vase and an emerald square section vase
\$400-500

396|**Three pieces of English pressed glass**
Blue-white coloured, square section with small chip, hexagonal with Sowerby peacock mark
\$200-300

397|**Doulton Lambeth ware Admiral Nelson commemorative mug**
With scenes of the battle of Trafalgar and the epithet England Expects That Every man Will Do His Duty h.92mm
\$400-500

398|**Victorian milk glass goblet vase**
Painted with roses, along with moulded milk glass beaker vase
\$60-120

399|**A Royal Doulton Sung Alchemist vase by C J Noke**
Extensively faulted h.480mm
\$400-800

Miscellany

400| **French ivory and ebony crucifix**
Dieppe school, 19th century. Slight losses to crown of thorns
Corpus h.22mm, w.170mm. Overall including ivory ring
suspension
h.545mm, w.230mm
\$3500-4000

401| **Bronze portrait bust of Sir Robert Menzies (1894-1978)**
Australian PM for 17 years
Monogrammed HI
h.510mm including timber base
\$1500-2000

402| **T Curts, *Le Trésor*. Bronze statuette of a miner with shovel**
The figure surmounts and covers the 'treasure', another parcel gilt bronze figure of a reclining nude. Signed T Curts, possibly a pseudonym for Carl Kauba (Austrian 1895-1929)
Foundary mark Copyright, Thenn, Vienna
h.190mm, w.140mm
\$4000-5000



400 Detail



400

411| **Artist Unknown, portrait of an old jewish man**
Oil on card
Inscribed verso: 'Restored by me Nov 1986...'
90 x 70mm
\$150-250

412| **George Smith (British 1829-1901)**
The Flower Gatherers
Oil on board
Signed and dated 1852
105 x 85mm
\$1000-1500

413| **Unknown Artist**
English street scene
Oil on board
Unsigned
290 x 380mm
\$200-300



404

422| **Bohemian amber-flashed beaker**
Engraved with architectural vignettes, chips to foot
h.130mm
\$50-90

423| **Bleu céleste glass hinged-lidded tea caddy**
Engraved initials to lid
h.100mm, w.110mm, d.80mm
\$200-250

424| **Large blue glass Victorian vase**
With clear glass frilled mouth
\$250-350

425| **Oak tantalus with two crystal square section decanters**
With decanter tickets Whisky and Gin
h.310, w.250mm
\$200-300

426| **French silk parasol**
With ebonized shaft terminating in a wrythen gold finial, engraved Suzanne
\$150-200



402

403| **Viennese hinged lidded bronze casket**
19th century. Ovoid with birds in relief, supported on a base modelled as naturalistic branches and surmounted by a bird finial
h.145mm, w.210mm
\$800-1000

404| **Pair of French ormolu table candelabra**
Louis XV style. Late 18th - early 19th century. Five nozzles raised on acanthus arms issuing from a rococo base with seated cherubim
h.460mm
\$2500-3000

405| **French Louis XV style ormolu cased mantel clock**
The ornate case framed by acanthus scrolls forming an arbour where a woman sits smitten by cupid's arrow. The bell striking movement with silk suspended pendulum, the gilt face with white enamel hour plaques and blued steel hands. 19th century
h.500mm, w.400mm
\$3500-4000

406| **Pair of French Empire ormolu candelabra**
Tripod hoof footed interspersed by open anthemion motifs, supporting slender fluted columns and single nozzles
\$800-1000

407| **Pair of oak, open barley twist turned candlesticks**
\$80-120

408| **Birdseye maple jewellery or work box**
With shield escutcheon to the lid
330 x 120 x 220mm
\$125-200

409| **Walnut sarcophagus shaped tea caddy**
With two compartments
\$200-250

410| **Ebonized framed oval silhouette portrait**
Inscribed verso Nee Francis Charlotte Gardiner, Mrs JR Lysagnt, mother of BC Lysagnt
240 x 190mm
\$100-125

414| **Cased microscope by C Baker**
Black enamel and brass
\$600-700

415| **19th century glass paperweight on matching pedestal stand**
\$300-400

416| **W S Morrish**
Moor landscape with sheep grazing
Oil on canvas
Signed and dated 1889
340 x 600mm
\$400-500

417| **Indian 18th/19th century Gupta style marble bodhisattva figure**
The figure broken to the arm and leg sections
h.320mm
\$1000-1500

418| **Dinosaur egg fossil**
l.200mm
\$300-400

419| **Steel, brass and bakelite 'skeleton' phone**
With decoratively painted and 'japaned' surfaces, chromed highlights and bakelite grip to the receiver
\$850-1000

420| **Baccarat octagonal mallet-bodied crystal decanter**
Etched factory mark. Small frits to stopper
h.225mm, d.125mm
\$150-200

421| **Venetian clear and coloured glass clown decanter**
\$150-200

427| **French handmade cotton lace table cloth by Suzanne de Rouffiac**
incorporating many type including honeycomb point and torchon, some stains
2350 x 1500mm
\$150-250

428| **Apprentice's miniature walnut flat front chest of drawers**
Two half width above three graduated height drawers with watch lever handles, raised on short bracket feet
h.275mm, w.225mm, d.155mm
\$350-450

429| **Pair of porphyry and brass candlesticks**
With slender columns raised from plinth bases
h.280mm
\$200-275

430| **Plaster and oak crucifix**
h.700mm, w.300mm
\$250-300

431| **Gilt metal and oak crucifix**
h.550mm, w.300mm
\$250-300

432| **Christ corpus**
Carved light wood, arms absent
h.315mm
\$200-250

434| **French gilt metal and ebonized wood crucifix**
h.380mm, w.240mm
\$150-200

435| **Late 19th century South German oak Christ corpus**
h.535mm, w.490mm
\$850-950

Oriental Arts



- 436 | **Japanese Amida Buddha shrine**
Late Meiji period, black lacquer two doored shrine with foliate engraved gilt metal decorative fittings and hinges. Opening to reveal a gilded interior with penwork clouds and lotus pods to the doors. The shrine is faced by a tori with slender uprights, carved with a ho-o bird at the cross-member framing a giltwood standing study of the Amida Buddha raigo-in (vitarka-mudra)
410 x 198 x 160mm
\$1500-2500

- 437 | **Three 19th century Chinese exportware porcelain bowls**
From the Tek Sing treasure salvage
Sunk 1822 in the South China Sea and salvaged 1999
\$150-250

- 438 | **Kanzaki porcelain reticulated double walled baluster vase**
With a 'captured cricket' modeled to the interior. Japan c.1982
Signed in kanji script under foot.
Cf. www.kippo.or.jp/KansaiWindowHtml/Collection/English/000342.html
Provenance: Bruce and Estelle Martin collection.
h.220mm
\$150-200

- 439 | **Japanese neriagi (agate ware) earthenware**
Small pouring dish, circular with faceted frieze d.97m
Provenance: Bruce and Estelle Martin collection
\$50-80

- 440 | **An uncut roll of Japanese printed fabric for a yakata robe**
Indigo dyed, standard male size. From Sakai City, Hyogo.
\$50-80

- 441 | **Japanese woman's daytime kimono**
Coral coloured self patterned material with printed summer flowers. Red silk lined
\$150-300

- 442 | **Pair of Japanese cloisonné ovoid vases**
Oyster ground with red ground shield shaped panels decorated with ho-o bird and a winged dragon amongst clouds
Each vase decorated with mirrored images
h.235mm, d.105mm
\$1000-2000

- 443 | **Japanese Meiji period Arita blue and white charger**
Painted with prunus blossoms to the exterior rim. The centre painted with a vase spilling forth flowers and a scholar's table with a table screen and brush pot d.360mm
\$1000-1500

- 444 | **Qing dynasty mandarin's embroidered silk rank badge**
Fourth rank civil official's badge bearing an image of a wild goose
Cf. www.journalofantiques.com/Jan05/featurejan05.htm
290 x 295mm
\$150-250

- 445 | **Japanese aikuchi (dagger)**
With a 17th century blade and later brass fittings and leather tsuka (grip)
l.300mm
\$1000-1500

- 446 | **Japanese wakazashi (short sword) by Tadayoshi**
Signed to the tang, with later black lacquer saya. The fittings en suite with iron tsuba with copper inlay, brass recumbent horse form menuki, copper and brass fuchi-kashira and with ray skin and bound cord tsuka
l.560mm
\$3200-4000

- 447 | **Japanese wakazashi**
With broken saya and later chromium plated blade. Bought to New Zealand by a J-force member at the conclusion of WWII
l.670mm
\$150-250

- 448 | **Japanese wakazashi**
With black lacquer saya, damaged at the kuritaga section. The tsuka with old court fittings, brass tsuba, cast iron fuchi-kashira, the menuki absent, and with ray skin grip
\$700-900

- 449 | **Japanese Tachi in WWII fittings**
With leather covered saya and brass tsuba decorated with chrysanthemum blossoms, and with a single chrysanthemum form menuki l.880mm
\$1800-2500

- 450 | **Japanese tachi**
With 18th century blade, in black lacquer saya and with court fittings en suite, brass kojiri, brass tsuba, pole arm menuki, brass engraved fuchi-kashira, ray skin and bound cord tsuka l.1020mm
\$7500-8500

- 451 | **Japanese cylindrical carved bamboo vase**
Carved with an equestrian samurai warrior, c.1920
h.450mm
\$350-450

- 452 | **A Chinese red lacquer and gilt box**
The hinged lid and walls decorated with birds in a fenced garden
215 x 150 x 100mm
\$80-120

- 453 | **Indian bronze bodhisattva statuette**
Standing holding an offertory vessel, mandala absent
h.210mm
\$400-500

- 454 | **Japanese bronze inverse baluster vase**
With moulding in high relief
\$100-200

- 455 | **Pair of Guangxu imperial wine cups**
Yellow glazed exterior and white interior
Blue six character imperial reign mark under foot 1875-1908
d.80mm, h.35mm
\$400-500

- 456 | **Yixing pottery teapot**
Modelled as a mystic three legged animal, unglazed surfaces excluding the eyes
Impressed four character mark under base
w.180mm
\$175-200

457|
|**Chinese blue and white porcelain model of a boat**
With dragon head prow, decorated to the sides stern and deck with painted birds, waves and flowers
19th century
l.395mm
\$400-500

458|
|**Japanese earthenware squat circular pot with black lacquer lid**
Pine boxed, splashed pale blue over oyster glaze
h.150mm, d.210mm
\$200-300

459|
|**A Japanese pottery tea bowl**
Wheel thrown coarse clay feldspathic glaze with bold white brush stroke decoration encircling the exterior
d.130mm, 130mm
\$100-150

460|
|**Japanese earthenware beaker form tea bowl**
Painted in yellow blue and aubergine with chrysanthemums and rocks
h.105mm, d.90mm
\$100-140

461|
|**Two Japanese buddhistic scrolls**
Each with printed and painted studies of various buddhas and bodhisattvas, with pine rectangular box
\$175-250

462|
|**Tibetan thangka depicting Yamantaka**
The protector surrounded by attendant Gelupa buddhas and bodhisattvas
880 x 640mm
\$400-600

450



463|
|**Japanese dish form tea bowl**
Wheel thrown, feldspathic glaze. Impressed seal mark to side
d.142mm, h.50mm
\$100-150

464|
|**Japanese pottery tea bowl**
Wheel thrown, in the manner of inlaid Korean ceramic ware, grey and white glaze
d.145mm, h.85mm
\$100-150

465|
|**Pair of 18th-19th century Japanese brass pricket sticks**
With slender stems raised from circular plate bases, held with lugs and pins. Accompanied by wick tweezers and a small canister, not necessarily of the same period
h.515mm, d.215mm
\$250-350

466|
|**Japanese black lacquer and mother of pearl inlaid small circular lidded box**
The lid depicting a scholar seated at a table in a garden
d.75mm, h.20mm
\$200-300

467|
|**19th century Japanese shakahachi bamboo flute**
l.540mm
\$100-150

468|
|**Chinese provincial blue and white plate painted with kylin**
d.290mm
\$100-150

469|
|**Chinese provincial blue and white plate**
Painted with a dragon pursuing a flaming pearl.
d.290mm
\$100-150

470|
|**Chinese provincial blue and white plate**
Painted with sages and a young neophyte in a garden setting
d.290mm
\$100-150

471|
|**19th century Chinese provincial pricket stick figure**
With traces of original gilded and painted finish
h.490mm
\$200-250

472|
|**Japanese (collected in Kyoto) ikebana vase**
Formed from a natural buffalo horn
l.450mm
\$50-100

473|
|**Chinese Vietnamese Ming dynasty period pear shaped porcelain wine ewer**
With unglazed reticulated panels to the sides pierced with birds let into the glazed body which is decorated in underglaze blue with kylin, birds and foliage. The slender spout is united with the neck by a dragon shaped strut and the spout from is replicated in the slender handle
Made at Hai-Tsung near Hanoi. c.1500
h.250mm, d.115mm
\$4500-5000

474|
|**Chinese ivory doctor's model**
Of a disrobed female, reclining head supported on a bent arm whilst the other partially covers her breasts. On wooden plinth stand l.135mm
\$850-1000

475|
|**Chinese tortoiseshell table snuff box**
Circular, deeply carved with figures in a landscape with pavilions along with a river scene, to all surfaces including the underside
d.96mm, h.27mm
\$500-700

476|
|**Chinese tortoiseshell card case**
Rectangular, carved all over with figures in a treed landscape along with various pavilions
95 x 60 x 9mm
\$450-550

477|
|**Pair of Satsuma spherical vases**
With flattened walls painted with panels of figures and flowers reserved on a dark blue ground and embellished with raised gilded trailing wisteria. Signed to underside of base
h.200mm, d.145mm
\$2500 - \$3500

478|
|**A Satsuma spherical flattened walled vase**
Painted with panels of figures in interiors. Reserved on a blue ground with scattered blossom and fan shaped panels
Signed on underside of base
h.150mm, d.120mm
\$800-1000

479|
|**Pair of Chinese Watercolour Ancestor Scroll Paintings**
A mandarin wearing an aubergine pu-fu emblazoned with a golden pheasant rank badge and his wife similarly robed.
1390 x 800mm (image) each.
\$200-300

480|
|**Three piece Satsuma earthenware tea set**
Painted with trailing wisteria on an ivory ground
\$150-200

481|
|**Chinese lozenge shaped inkstone, cased**
Decorated with opposing dragons and verso with a wooded landscape 290 x 140 x 25mm
\$180-230

482|
|**Japanese Meiji period Imari dish**
Painted with a flower head to the centre, the surrounding four panels painted with baskets of flowers and a house beside a river
l.300mm
\$250-350

483|
|**A Chinese scroll with printed calligraphic script**
1700 x 520mm
\$150-250

484|
|**A Chinese scroll similar to the above**
1540 x 540mm
\$150-250

485|
|**A Chinese scroll with Zen inspired calligraphic script**
1200 x730mm
\$150 -200

486|
|**A Chinese scroll painted with a hawk nesting beside a river**
1650 x 600mm
\$150-250

Antiquities

492 490 491 489 488

490 | **A Roman lead amulet or votive plaque**
Possibly Danubian Rider cult
Embossed with a horseman, deity, dog and other various
iconographic elements. East-central Europe. c.200-300AD
<http://www.collector-antiquities.com/105/>; www.collector-antiquities.com/18/?vitem=185&pcat=21 85 x 75mm
\$700-900

494 | **Chinese miniature pottery green glazed funerary wine ewer**
Possibly Tang dynasty, c.600-900AD. ovoid with nipple mouth, plain spout and loop handle
h.77mm
\$250-300

498 | **Japanese cloisonné charger**
With French gilt metal frame
d.320mm
\$200-300

510 | **\$200-400**
Late 19th century French ebonized side chair
 The back splat with inset Sevres style porcelain plaque painted with a putti figure. With cane seat raised on splayed legs united by stretchers
\$200-250

511	<div> <div></div> <div> Georgian mahogany washstand The upper shelf held on turned supports. The lower self with two drawers with turned handles raised on turned legs w.830mm, h.1110mm \$2000-2500 </div> </div>	526	<div> <div></div> <div> A Japanese Meiji period cryptomeria wood merchant's sea chest With metal bindings h.340mm, w.300mm \$250-350 </div> </div>	542	<div> <div></div> <div> Late Victorian figured walnut sideboard The upper section with a shield shaped mirror flanked by fret carved panels above a rectangular mirror with conforming fret carved panels. The lower section with a paneled cupboard with extensive foliate satinwood inlay flanked by serpentine shaped shelves held on turned supports, raised on flat bun feet terminating in porcelain castors h.1660mm, w.1200mm \$4000-5000 </div> </div>
512	<div> <div></div> <div> Set of seven Edwardian Hepplewhite style side chairs Comprising six side chairs and one carver. Each with oval back and drop in seat raised on tapering legs \$1200-1800 </div> </div>	527	<div> <div></div> <div> Japanese paulownia wood wedding cabinet The interior with five sliding shelves above three drawers w.880mm, h.1000mm \$400-600 </div> </div>	543	<div> <div></div> <div> Late 19th century Sheraton revival corner cabinet The upper section with architectural pediment above a shelf and bevel edged mirror. The base with bow fronted glazed cupboard flanked by rectangular glazed panels on tapering legs with satin wood stringing terminating in spade feet h.1980mm, w.780mm \$1200-1500 </div> </div>
513	<div> <div></div> <div> French Louis Philippe style commode With three graduated drawers with brass handles and escutcheons raised on block feet \$1200-1500 </div> </div>	528	<div> <div></div> <div> Late18th century Japanese carved Jizo stone garden Buddhist shrine h.500mm \$200-300 </div> </div>	544	<div> <div></div> <div> Set of six Victorian rosewood dining chairs Each with pierced foliate back splats raised on cabriole legs The overstuffed seats with pale yellow stripped upholstery \$2500-3500 </div> </div>
514	<div> <div></div> <div> A Victorian gentleman's chair With button back and padded arms raised on turned legs terminating in brown porcelain castors \$1200-1500 </div> </div>	529	<div> <div></div> <div> Japanese late Meiji period Kyoto style lacquer chest of drawers With three drawers above five smaller drawers Lacquer damage evident h.1000mm, w.890mm \$400-600 </div> </div>	545	<div> <div></div> <div> Edo period Japanese packhorse saddle With lacquered leather and gilded decoration and with cut bronze mounts \$2000-3000 </div> </div>
515	<div> <div></div> <div> French 19th century oak armoire With stepped cornice above paneled doors with brass escutcheons above a shaped apron on squat cabriole legs. The interior with three shelves and two small drawers above a full width drawer h. 2350mm, w.1400mm \$4000-5000 </div> </div>	530	<div> <div></div> <div> Japanese late Meiji period bronze water basin h.330mm, d.600mm \$600-800 </div> </div>	546	<div> <div></div> <div> Early 19th century Biedermeier cherrywood settee With cane seat and pierced fret work back splat with gold embossed boarder raised on tapering legs. c.1820 \$2000-3000 </div> </div>
516	<div> <div></div> <div> French 19th century oak armoire With stepped cornice above paneled doors raised on stepped feet h.2100mm, w.1300mm \$1500-2000 </div> </div>	531	<div> <div></div> <div> Japanese six panel painted paper screen painted With houses and figures in a landscape setting h.1260mm w.2400mm \$800-1000 </div> </div>	547	<div> <div></div> <div> 19th Century Biedermeier side chair With scroll back and overstuffed seat raised on splayed legs \$350-500 </div> </div>
517	<div> <div></div> <div> French painted oak corner cabinet The upper section with a single shelf and with carved lion mask to the frieze. The lower section with three masks to the frieze raised on cabriole legs with acanthus carving on a platform base h.2100mm, w.830mm \$800-1200 </div> </div>	532	<div> <div></div> <div> A Japanese cabinet maker's tool box Complete with tools. The tools marked with the cabinet makers insignia in calligraphic script \$300-400 </div> </div>	548	<div> <div></div> <div> Late 19th century elm Windsor chair Raised on turned legs \$350-450 </div> </div>
518	<div> <div></div> <div> French Louis XVI style walnut commode With black and white mottled marble top above four full width drawers with brass handles raised on flat bun feet w.1260mm, h.900mm \$1800-2400 </div> </div>	533	<div> <div></div> <div> Japanese paulownia wood chest With sliding cupboards and six drawers. c.1930 h.540mm, w.660mm \$300-400 </div> </div>	549	<div> <div></div> <div> Oak arts and crafts screen Inset with 18th century painted and embossed leather panels with japonais inspired dragon and floral decoration h.1650mm, w.2200mm \$3500-4500 </div> </div>
519	<div> <div></div> <div> Pair of black painted Chinese provincial side chairs \$350-500 </div> </div>	534	<div> <div></div> <div> Japanese Meiji period cabinet Extensively inlaid in the Korean manner in mother of pearl with figures and pagodas in a landscape setting. Probably made for export to China or Korea h.490mm, w.300mm \$400-600 </div> </div>	550	<div> <div></div> <div> Victorian mahogany washstand With white marble top above two small drawers and two full width drawers on a platform base h.800mm, w.1100mm \$800-1200 </div> </div>
520	<div> <div></div> <div> 19th century Chinese provincial sideboard With four drawers above cupboards all extensively carved with stylized dragons and scrolling tendrils w.1940mm, h.970mm \$3000-4000 </div> </div>	535	<div> <div></div> <div> Japanese two panel paper screen Painted with a dragon w.1800mm, h.1740mm \$250-400 </div> </div>	551	<div> <div></div> <div> Chinese Sian Xi province black lacquer cabinet Painted with figures and terraced houses h.850mm, w.820mm \$500-800 </div> </div>
521	<div> <div></div> <div> Japanese late Meiji period six panel folding screen Painted with figures and pagodas situated on a rocky outcrop beside a river with mountainous back ground. h.1740mm, w.3600mm \$1000-1500 </div> </div>	536	<div> <div></div> <div> Massive Chinese 19th century water pot With celadon glaze h.750mm, d.650mm \$600-800 </div> </div>	552	<div> <div></div> <div> French walnut dining table and six chairs The chairs with cane backs and seats raised on cabriole legs \$4000-5000 </div> </div>
522	<div> <div></div> <div> Japanese six panel gold paper screen With red lacquer border h.1360mm, w.2760mm \$700-900 </div> </div>	537	<div> <div></div> <div> Pair of 19th Century French Louis XV style bergere chairs With decoratively painted frames. One with matching foot stool \$3000-4000 </div> </div>	553	<div> <div></div> <div> French late 19th century Empire style walnut commode With black and white mottled marble top above four graduated drawers with shield shaped escutcheons raised on bracket feet h.930mm, w.1100mm \$2000-2500 </div> </div>
523	<div> <div></div> <div> Japanese keyaki burl wood scholars cabinet h.280mm, w.380mm \$200-300 </div> </div>	538	<div> <div></div> <div> Chinese 19th century red lacquer wedding cabinet Painted with terraced houses and figures in a landscape setting raised on square section legs w.1300mm, h.1900mm \$1200-1800 </div> </div>	554	<div> <div></div> <div> 19th Century Scandinavian walnut sideboard With two small drawers above paneled cupboards with cut brass, copper and mother of pearl inlay raised on bun feet h.780mm, w.1200mm \$1200-1800 </div> </div>
524	<div> <div></div> <div> Japanese paulownia wood tea cabinet With sliding cupboards above a glazed paneled cupboard and small drawers. The interior complete with numerous small boxes for holding tea w.660mm, h.880 mm \$250-350 </div> </div>	539	<div> <div></div> <div> Japanese zelkova wood tea cabinet With sliding paneled cupboards, shelves and small drawers h.950mm, w.780mm \$250-350 </div> </div>	555	<div> <div></div> <div> Colonial twin pedestal desk With central frieze drawer and four drawers to each pedestal w.1360mm h.740mm \$1200- 1800 </div> </div>
525	<div> <div></div> <div> Japanese Meiji period zelkova wood Shinto temple money box h.380mm, w.340mm \$250-350 </div> </div>	540	<div> <div></div> <div> A Japanese paulownia wood cabinet With sliding doors above three small drawers h.500mm, w.900mm \$200-300 </div> </div>		
		541	<div> <div></div> <div> Victorian mahogany supper table raised on a central pedestal on three scroll legs d.1250mm \$900-1200 </div> </div>		

556|
|**Large 19th Century Northern Indian, Jodhpur region teak temple doorway and frame**
The frieze carved with Krishna playing the flute flanked by two sacred Hindu cows above a figure of Garnesh with attendant deities. Traces of original green painted finish
h.2350mm, w.1560mm
\$1800-2400

557|
|**Indian temple doorway and frame**
Similar to the above
h.2250mm, w.1700mm
\$1800-2400

558|
|**Late Victorian kerosene lamp**
With a patterned frosted shade and ruby glass font raised on a cast brass base
h.680mm
\$350-500

559|
|**Japanese red and black lacquer window screen**
\$50-100

560|
|**French Louis XVI style console table**
With marble top and gilt wood base
h.950mm, w.1080mm
\$3500-5000

561|
|**French Louis XVI style gilt wood overmantel mirror**
With foliate carved pediment and original bevel edged glass plate h.1800mm, w.1010mm
\$3500-5000

562|
|**19th century Spanish settle**
With paneled back raised on square section legs.
w.2400mm, h.1100mm
\$1500-2000

563|
|**Regency style gilt wood framed convex mirror**
\$1500-2000

564|
|**19th century French cherrywood buffet**
With two drawers above cupboards raised on cabriole legs
w.1360mm, h.1040mm
\$3000-4000

565|
|**Late 19th century colonial teak dressing table**
With central mirror flanked by small drawers.
The lower section with two small drawers above two full width drawers w.1100mm, h.1600mm
\$800-1200

566|
|**A Tibetan hand knotted rug**
Decorated with flower heads and Buddhist endless knot emblems
170 x 90cm
200-300

567|
|**A Tibetan hand knotted rug**
Decorated with a flayed tiger skin
130 x 72cm
\$200-300

568|
|**A Tibetan hand knotted rug**
Decorated with dancing skeletons and four pointed vajras
150 x 95cm
\$200-300

569|
|**Caucasian ‘sampler’ rug**
With panels of hand knotted pile, Sumak extra-weft wrapping and kilim weave. All wool construction.
190 x 90cm
\$200-300

570|
|**Caucasian rug**
Silk extra-weft wrapped cotton foundation. Decorated with three medallions with ‘running dog’ outline on a pale ground patterned with stylized birds, goats and sheep
193 x 120cm
\$600-900

571|
|**Keligi kilim with bands of extra-weft wrapping**
Snowflake medallion repeat pattern interspersed by diaper patterned bands
200 x 89cm
\$100-200

572|
|**Small Persian tribal saddlebag**
With banded extra-weft wrapped face decoration
140 x 44cm
\$125-275

573|
|**Kurdish nomad’s bedding bag**
With a face decoration of repeating columns of diamond motifs. The mouth with loops for closing 87 x 60cm
\$175-250

574|
|**Kurdish large double saddle bag**
Kilim weave with additional weft wrapping. One side with complex banded patterns, the opposite with repeat fields of ‘snowflake’ medallions in two shades of indigo on a madder red ground 158 x 79cm
\$250-350

575|
|**Baluchi tribal single bedding bag**
With hand knotted woollen pile face decorated with a field of repeat rosette medallions 75 x 59cm
\$100-175

576|
|**Kilim saddle bag**
With section cut away
\$100-175

577|
|**Old Hamadan rug**
With three conjoined hexagonal medallions on a lozenge shaped red ground framed by a triple border
Hand knotted wool pile on cotton weft and warp 190 x 130cm
\$300-400

578|
|**Early 20th century Caucasian rug**
With lozenge shaped, salmon coloured field decorated with three medallions and scattered animal motifs and rosettes
Wool pile on cotton weft and warp 176 x 101cm
\$150-250

579|
|**Anatolian bedding bag**
Kilim faced reverse and weft wrapped face, decoratively worked with hook key outlined complex patterned bands
108 x 67cm
\$250-400

580|
|**Kurdish small double saddle bag**
The bag faces with repeat woven faces of rosette motifs in red and blue
140 x 51cm
\$175-250

581|
|**Hand knotted rug**
Decorated with six medallions and scattered geometric motifs and animals on a russet-ochre ground
220 x 96cm
\$600-900



564



518



549



505

An Extraordinary Sale of Worcester and Decorative Arts November 2007



(right)

A museum-quality
George Grainger
reticulated porcelain
urn and cover
circa 1862
h. 800mm

\$50 000 - \$60 000



(left)

A museum-quality
Japonais influenced
Royal Worcester
porcelain urn
circa 1890
h. 600mm

\$35 000 - \$45 000

Enquiries to
Ross Millar
ross@artandobject.co.nz
+64 9 306 6190
mob 021 222 8185
James Parkinson
james@artandobject.co.nz
+64 9 306 6192
mob 021 222 8184

Absentee Bidding Instructions

Bidding No.
For Absentee Bidders at ART+OBJECT’s Sale No.2, 24 & 26 May 2007

This completed and signed form authorizes ART+OBJECT to bid on my behalf at the May 24th/26th auction for the following lots up to prices indicated below. These bids are to be executed at the lowest price levels possible. I understand that if successful I will purchase the lot or lots at or below the prices listed on this form + the listed buyers premium for this sale (12.5%) and Gst on the buyers premium.
I warrant also that I have read and understood and agree to comply with the conditions of sale as printed in the catalogue.

Lot No. (s)

Catalogue Descriptions

Bid(s)

Payment and Delivery ART+OBJECT will advise me as soon as is practical that I am the successful bidder of the lot or lots described above. I agree to pay immediately on receipt of this advice. Payment will be by cash, cheque or bank transfer. I understand that cheques will need to be cleared before goods can be uplifted or dispatched. I will arrange for collection or dispatch of my purchases. If ART+OBJECT is instructed by me to arrange for packing and dispatch of goods I agree to pay any costs incurred by Art+OBJECT. Note: ART+OBJECT requests that these arrangements are made prior to the auction date to ensure prompt delivery processing

MR/MRS/MS: _____ SURNAME: _____

POSTAL ADDRESS: _____

STREET ADDRESS: _____

BUSINESS PHONE: _____ MOBILE: _____

FAX: _____ EMAIL ADDRESS: _____

Signed as agreed: _____
To register for Absentee bidding this form must be lodged with ART+OBJECT prior to the published sale time in one of three ways:
1. Fax this completed form to ART+OBJECT +64 9 354 4645
3. Email a printed, signed and scanned form to: info@artandobject.co.nz
4. Post to ART+OBJECT, PO Box 68-345 Newton, Auckland 1145, New Zealand
ART+OBJECT 3 Abbey Street, Newton, Auckland, New Zealand. Telephone +64 9 354 4646, Freephone 0800 80 60 01

Conditions of Sale

Please note it is assumed that all bidders at auction have read and agreed to the conditions described on this page. ART+OBJECT directors are available during the auction viewing to clarify any questions you may have.

1 Registration: Only registered bidders may bid at auction. You are required to complete a bidding card or absentee bidding form prior to the auction giving your correct name, address and telephone contact + supplementary information such as email addresses that you may wish to supply to ART+OBJECT

2 Bidding: The highest bidder will be the purchaser subject to the auctioneer accepting the winning bid and any vendor's reserve having been reached. The auctioneer has the right to refuse any bid. If this takes place or in the event of a dispute the auctioneer may call for bids at the previous lowest bid and proceed from this point. Bids advance at sums decreed by the auctioneer unless signaled otherwise by the auctioneer. No bids may be retracted.

3 Reserve: Lots are offered and sold subject to the vendor's reserve price being met.

4 Lots offered and sold as described and viewed: ART+OBJECT makes all attempts to accurately describe and catalogue lots offered for sale. Notwithstanding this neither the vendor nor ART+OBJECT accepts any liability for errors of description or faults and imperfections whether described in writing or verbally. This applies to questions of authenticity and quality of the item. Buyers are deemed to have inspected the item thoroughly and proceed on their own judgment. The act of bidding is agreed by the buyer to be an indication that they are satisfied on all counts regarding condition and authenticity.

5 Buyers premium: The purchaser by bidding acknowledges their acceptance of a buyers premium of 12.5% + Gst on the premium to be added to the hammer price in the event of a successful sale at auction.

6 ART+OBJECT is an agent for a vendor: A+O has the right to conduct the sale of an item on behalf of a vendor. This may include withdrawing an item from sale for any reason.

7 Payment: Successful bidders are required to make full payment immediately post sale – being either the day of the sale or the following day. If for any reason payment is delayed then a 20% deposit is required immediately and the balance to 100% required within 3 working days of the sale date. Payment can be made by Eftpos, bank cheque or cash. Cheques must be cleared before items are available for collection. Credit cards are not accepted.

8 Failure to make payment: If a purchaser fails to make payment as outlined in point 7 above ART+OBJECT may without any advice to the purchaser exercise its right to: a) rescind or stop the sale, b) re offer the lot for sale to an underbidder or at auction. ART+OBJECT reserves the right to pursue the purchaser for any difference in sale proceeds if this course of action is chosen, c) to pursue legal remedy for breach of contract.

9 Collection of goods: Purchased items are to be removed from ART+OBJECT premises immediately after payment or clearance of cheques. Absentee bidders must make provision for the uplifting of purchased items.

10 Bidders obligations: The act of bidding means all bidders acknowledge that they are personally responsible for payment if they are the successful bidder. This includes all registered absentee or telephone bidders. Bidders acting as an agent for a third party must obtain written authority from ART+OBJECT and provide written instructions from any represented party and their express commitment to pay all funds relating to a successful bid by their nominated agent.

11 Bids under reserve & highest subject bids: When the highest bid is below the vendor's reserve this work may be announced by the auctioneer as sold ‘subject to vendor's authority’ or some similar phrase. The effect of this announcement is to signify that the highest bidder will be the purchaser at the bid price if the vendor accepts this price. If this highest bid is accepted then the purchaser has entered a contract to purchase the item at the bid price plus any relevant buyers premium.

Important advice for buyers: *The following information does not form part of the conditions of sale, however buyers, particularly first time bidders are recommended to read these notes.*

(a) Bidding at auction: Please ensure your instructions to the auctioneer are clear and easily understood. It is well to understand that during a busy sale with multiple bidders the auctioneer may not be able to see all bids at all times. It is recommended that you raise your bidding number clearly and without hesitation. If your bid is made in error or you have misunderstood the bidding level please advise the auctioneer immediately of your error – prior to the hammer falling. Please note that if you have made a bid and the hammer has fallen and you are the highest bidder you have entered a binding contract to purchase an item at the bid price. New bidders in particular are advised to make themselves known to the sale auctioneer who will assist you with any questions about the conduct of the auction.

(b) Absentee bidding: ART+OBJECT welcomes absentee bids once the necessary authority has been completed and lodged with ART+OBJECT. A+O will do all it can to ensure bids are lodged on your behalf but accepts no liability for failure to carry out these bids. See the Absentee bidding form in this catalogue for information on lodging absentee bids. These are accepted up to 2 hours prior to the published auction commencement.

(c) Telephone bids: The same conditions apply to telephone bids. It is highly preferable to bid over a landline as the vagaries of cellphone connections may result in disappointment. You will be telephoned prior to your indicated lot arising in the catalogue order. If the phone is engaged or connection impossible the sale will proceed without your bidding. At times during an auction the bidding can be frenetic so you need to be sure you give clear instructions to the person executing your bids. The auctioneer will endeavour to cater to the requirements of phone bidders but cannot wait for a phone bid so your prompt participation is requested.

ART+OBJECT Catalogue Subscriptions

Subscribe to ART+OBJECT catalogues

A+O produces industry leading auction catalogues, complete with superb photography, insightful essays and news. Over time these become an important archive of auction events and important art and objects. An A+O subscription guarantees you a minimum of 6 catalogues per annum delivered to your preferred address. Subscribe today to ensure you stay informed and receive the best catalogues from the 21st Century auction house.

A+O catalogues will quickly become industry leading records containing superb photography and thought provoking essays from many of today's most respected art and object critics and historians.

An annual subscrption guarantees a minimum of six catalogues covering Contemporary art and objects, photography, modern design, artefacts, antiques and popular culture + surprise special sales.

Auction catalogues – subscription rates include gst and postage

New Zealand	\$100.00
Australia	\$160.00
Rest of the world (airmail fastpost)	\$275.00

MR/MRS/MS: _____ SURNAME: _____

POSTAL ADDRESS: _____

STREET ADDRESS: _____

BUSINESS PHONE: _____ MOBILE: _____ FAX: _____

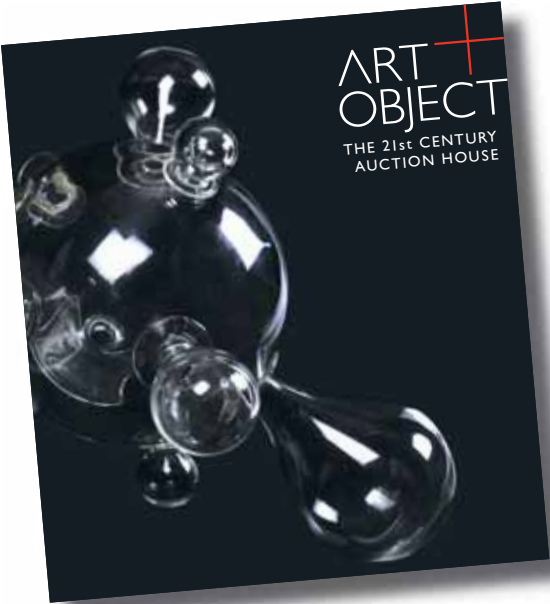
EMAIL ADDRESS: _____

Please find my cheque enclosed ☐ (tick box) or charge my Visa ☐ Mastercard ☐ Amex ☐

Card number: _____ Expiry date: _____

Post with cheque to ART+OBJECT, PO Box 68-345 Newton, Auckland 1145, New Zealand.
Fax with credit card details to +64 9 354 4645. Download this form from www.artandobject.co.nz

ART+OBJECT 3 Abbey Street, Newton, Auckland, New Zealand. Telephone +64 9 354 4646, Freephone 0800 80 60 01



Important Modern and Contemporary Photographs

July 19 at 6.30 pm – Entries invited until June 21

ART+OBJECT's inaugural photography auction contains some of the very finest examples by contemporary and modern practitioners including Laurence Aberhart, emerging Australian talent Narelle Autio, Wayne Barrar, Gavin Hipkins, Megan Jenkinson, Fiona Pardington, Michael Parekowhai, Yvonne Todd, Ronnie van Hout and Christine Webster. Selected final entries are invited for what will be a tightly themed exhibition and high quality catalogue.

To discuss including an artwork in this important auction please contact Ben Plumbly at ben@artandobject.co.nz DDI +64 9 306 6191 mobile 021 222 8183.

Fiona Pardington

Hei Tiki Carved by Prisoner
from Parihaka while incarcerated
in Dunedin
Gelatin silver print, 2002
\$6000 - \$9000



ART+OBJECT 3 Abbey Street, Newton, PO Box 68-345 Newton, Auckland 1145 New Zealand
Telephone +64 9 354-4646 or 0800 80 60 01 Fax +64 9 354-4645 Email info@artandobject.co.nz
www.artandobject.co.nz

Prices Realised A+O May 3rd Sale

LOT#	LOT#	LOT#	LOT#
1 9,000	35 9,600	73 6,000	113 800.00
2 5,750	37 9,000	77 2,200	115 200.00
4 8,000	38 6,000	78 6,100	116 1,800
5 9,000	40 12,000	79 350.00	117 350.00
6 14,000	41 35,000	80 675.00	118 750.00
7 18,000	42 55,000	81 850.00	119 300.00
8 14,000	44 5,500	83 7,000	120 275.00
9 5,750	48 5,000	84 600.00	121 400.00
10 18,500	49 4,750	85 530.00	122 625.00
12 8,800	50 8,500	87 450.00	123 550.00
13 750.00	51 7,000	89 900.00	
14 11,000	52 11,000	90 1,300	
15 14,000	53 5,500	91 3,000	
16 40,000	54 6,000	92 600.00	
17 38,000	55 14,000	95 2,600	
18 4,000	56 4,500	96 1,600	
19 4,000	57 3,000	97 350.00	
20 1,800	58 750.00	99 450.00	
21 1,600	59 2,600	100 600.00	
23 38,500	60 600.00	101 200.00	
24 16,000	61 800.00	102 1,700	
25 25,000	63 700.00	103 1,800	
26 16,000	64 650.00	104 450.00	
27 9,500	65 650.00	105 1,250	
28 5,100	67 5,400	106 500.00	
30 30,000	68 3,500	107 500.00	
31 47,500	69 30,000	108 1,000	
32 15,000	70 7,000	110 650.00	
33 14,000	71 1,200	111 1,200	
34 4,500	72 3,500	112 800.00	



69| **Ann Robinson**
Nikau Vase
amber green cast glass,
unique edition
signed and dated 2004
500 x 220 x 220mm
Sold for \$30 000

Index of Artists

ARTIST	LOT NO.
Gretchen Albrecht	36
Don Binney	3
Philippa Blair	11
Joanna Braithwaite	1
Burton Bros	82, 83, 84, 85, 86, 87, 88, 89, 90, 91, 92
George Chance	72, 73, 74, 75, 76, 77, 78, 79
Gavin Chilcott	62
Ray Ching	26
Richard Chrisp	57
Frank Coxhead	80, 81
Gordon Crook	39, 40, 41, 53, 54, 56
Liam Davidson	9
Tony de Lautour	10
Jenny Dolezel	68

Allie Eagle	8
Fatu Feu'u	47
Sir William Russell Flint	51
Luise Fong	22
Rodney Fumpston	52
Suzanne Goldberg	44
Rudolph Gopas	30
Bill Hammond	21
Pat Hanly	19, 20, 35
Jeffrey Harris	16, 17
Brent Harvey	49
Mabel Hill	4
Basil Honour	12
Ralph Hotere	31
Hayden Jarrett	13, 14
Richard Killeen	33
Doris Lusk	25

Colin McCahon	18
Christine Matheson	55
Archibald F. Nicholl	7
19th Century artist unknown	67
Sidney Nolan	50
Stanley Palmer	5, 38
J.S. Parker	23
Ollie Perkins	70
Seraphine Pick	32
Claudia Pond-Eyley	42, 43
Peter Robinson	2
Ian Scott	24, 60
Nicola Shanley	71
Michael Smither	27
Ella Spicer	61
M. Stankoska	37
Eion Stevens	6

Garth Tapper	48
Alan Taylor	34
Leon van den Eijkel	15
Victor Vasarely	28, 29
Dorothy Waters	45, 46
Bridget Webber	58, 59
Peter Williams	66
Jane Zusters	63, 64, 65, 69



maven