

ART OBJECT

THE 21ST CENTURY
AUCTION HOUSE



CONTENTS

- 2 Introduction 'What do we learn from collectors?'
- 4 Important Paintings July 30 Auction Highlights
- 7 Auction Preview - This Land
- 14 Reminiscences of John Perry - Ross Millar
- 21 A rare Wallisian (Uvea) tapa acquired by John Perry in 1964
- 56 New Collectors Art, lot 409 - Memories of Rembrandt
a mezzotint by John Drawbridge
- 65 20th Century Design
- 68 The Legacy of Garth Chester's Curvesse Chair
- a modern homage by Gregory Smith
- 79 The Ross Sutton Toy Collection
- FUN HO! - World Famous in New Zealand

ART
OBJECT

THE 21ST CENTURY
AUCTION HOUSE

THE JOHN PERRY COLLECTION

TUESDAY 18TH AUGUST 6.30pm

NEW COLLECTORS ART

THURSDAY 20TH AUGUST 6.00pm

20TH CENTURY DESIGN

THURSDAY 20TH AUGUST 6.45pm

THE ROSS SUTTON TOY COLLECTION

SATURDAY 22ND AUGUST 2.00pm

3 Abbey Street,
Newton
PO Box 68 345,
Newton
Auckland 1145,
New Zealand

Telephone +64 9 354 4646
Freephone 0800 80 60 01
Facsimile +64 9 354 4645
info@artandobject.co.nz
www.artandobject.co.nz

“What do we learn from collectors and collecting? To live over other people's lives is nothing unless we live over their perceptions, live over the growth, the change, the varying intensity of the same, since it was by these things they themselves lived.”

Henry James 1903

Welcome to the ensemble performance that best describes A+O's latest catalogue. In the four offerings that you will find in these pages and on exhibition from August the 14th there really has to be something for just about everyone + the excitement of viewing two great collections assembled over a lifetime.

John Perry is perhaps New Zealand's most well known authority on Social History, Folk Art and Natural History. From his time as Director of the Bath House Museum in Rotorua to his ownership of the cornucopia that was Global Village Antiques in Helensville John's influence, eye and ability to track down the most fascinating of objects has inspired, influenced and occasionally bewildered literally thousands of collectors, visitors and the plain curious. We recommend you set aside a good day or three to view the selection from his breathtaking collection which goes to auction on August 18.

The 20th Century Design Catalogue features a splendid suite of 27 booklets of advertising illustrations by John Osborne dating from 1946. At over 100 individual illustrations the collection is a fascinating insight into the world of advertising long before the advent of the computer. The collection will be offered at auction on August 20.

The final auction of the catalogue is The Ross Sutton Toy Collection and it constitutes one of the finest toy collections ever offered at auction in New Zealand. Spanning the late 19th century to almost the present day the catalogue includes trains, die-cast, dolls, tinplate and is particularly strong in New Zealand content and specifically Fun Ho! Ross' entire collection will be offered to a new generation of collectors on Saturday the 22nd of August. Toy fans start your engines!

We feel privileged that two great collectors in John and Ross have chosen ART+OBJECT to auction their collections and assist in passing the flame to a whole new group of collectors who will keep the passion alive.

Please note: exhibition images of the catalogue will be uploaded daily online from 14th to 21st August at www.artandobject.co.nz, hit NEWS on navigation bar



Live a little, a lot.



The first ever IS convertible is ready to play.

Meet the new Lexus IS250 convertible - luxury with a mischievous side. Hit the road in a hard top and switch to convertible in just 20 seconds. The premium audio and air conditioning work just as well with the roof down and whether you're skipping town or going shopping, multiple airbags and a clever Vehicle Dynamics Integrated Management system will keep you out of trouble. So go on, live a little and test drive the brand new IS250 convertible today.



www.lexus.co.nz

highlights from the important paintings auction

JULY 30TH 2009



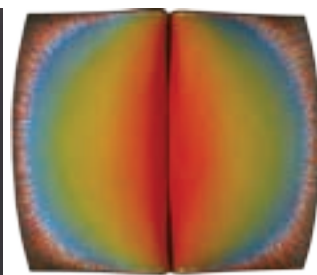
LEO BENSEMANN
Portrait of Sydney Lough-Thompson
\$19 390



SHANE COTTON
Wake
\$205 000

JULIAN DASHPER
Tolaga Bay at Fergusson Wharf
\$11 406

YUK KING TAN
Pohutukawa
\$4448



MILAN MRKUSICH
Meta Grey, Red
\$47 500*

TED BULLMORE
Astroform (Bliss)
\$19 390



JUDE RAE
Nexus II
\$35 358

JOHN PULE
Nofotatu Moru Tukulagi
\$51 328

PETER ROBINSON
Us and Them
\$20 530

RICHARD KILLEEN
Know This Place
\$42 203

TERRY STRINGER
The Source
\$23 953



all prices include buyers premium unless indicated

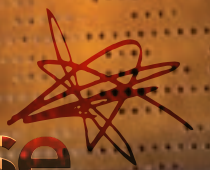


through the looking glass...

New

EXHIBITIONS + EVENTS + CAFE + SHOP

THE NEW DOWSE



45 Laings Rd, Lower Hutt + www.newdowse.org.nz

THIS

LAND:

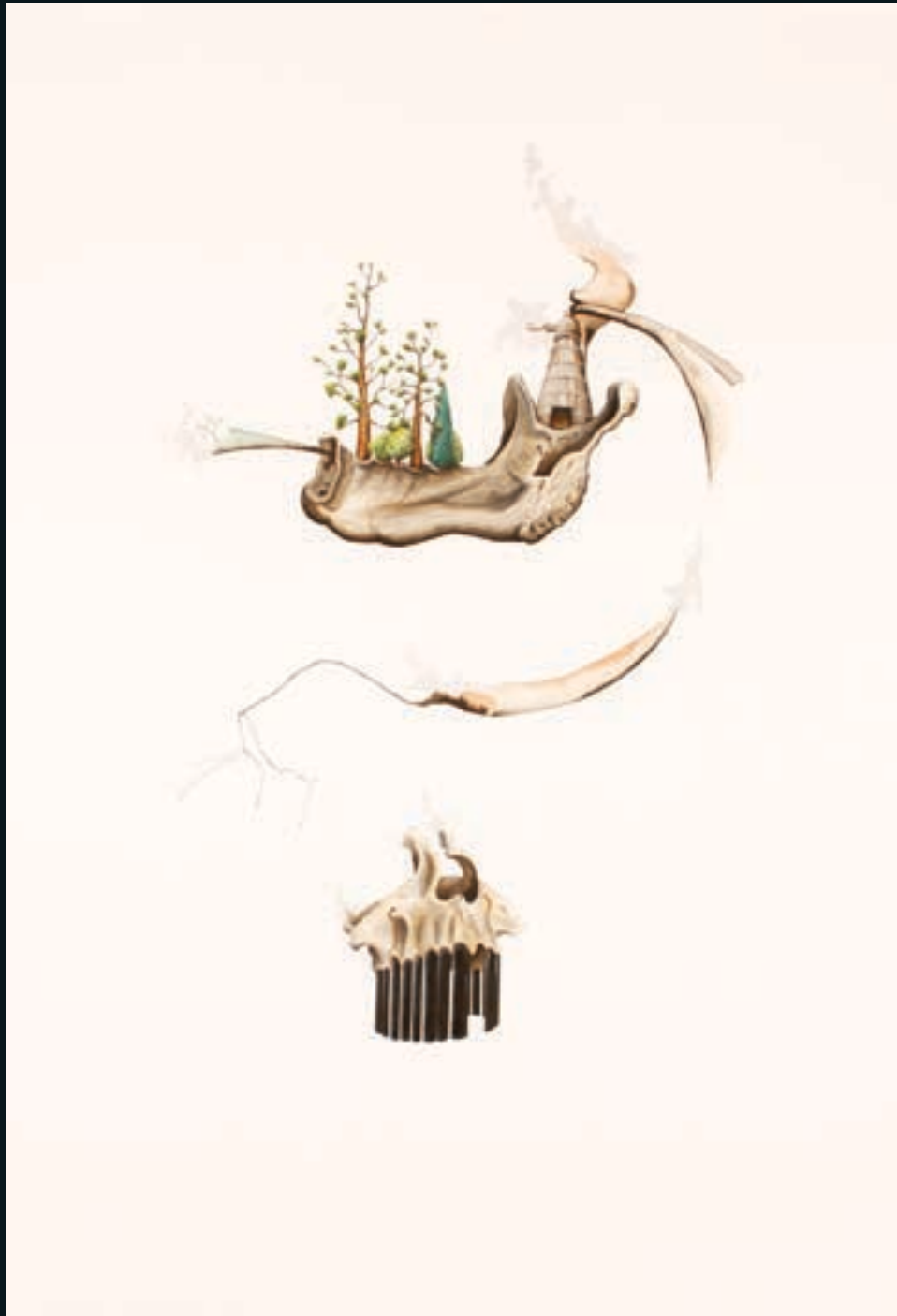
AN UNPRECEDENTED ARCHIVE COLLECTION OF
SIXTY WORKS BY RALPH HOTERE, *NEVER BEFORE*
SIGHTED BY THE NEW ZEALAND PUBLIC.

6:30 PM

SEP 24

contemporary art

OCTOBER 2009



Simon Esling
The Nursery
Ink and watercolour on paper
2007
1050 x 760mm
\$2500 - \$4000

Entries invited for this auction Contact Ben Plumbly ph 09 354 4646 021 222 8183 or ben@artandobject.co.nz



Martin Poppelwell
OOPS
Glazed ceramic
410 x 320mm
\$750 - \$1100

+ objects
OCTOBER 2009

Entries invited for this auction Contact Ross Millar ph 09 354 4646 021 222 8185 or ross@artandobject.co.nz

important paintings + sculpture

NOVEMBER 27 2009

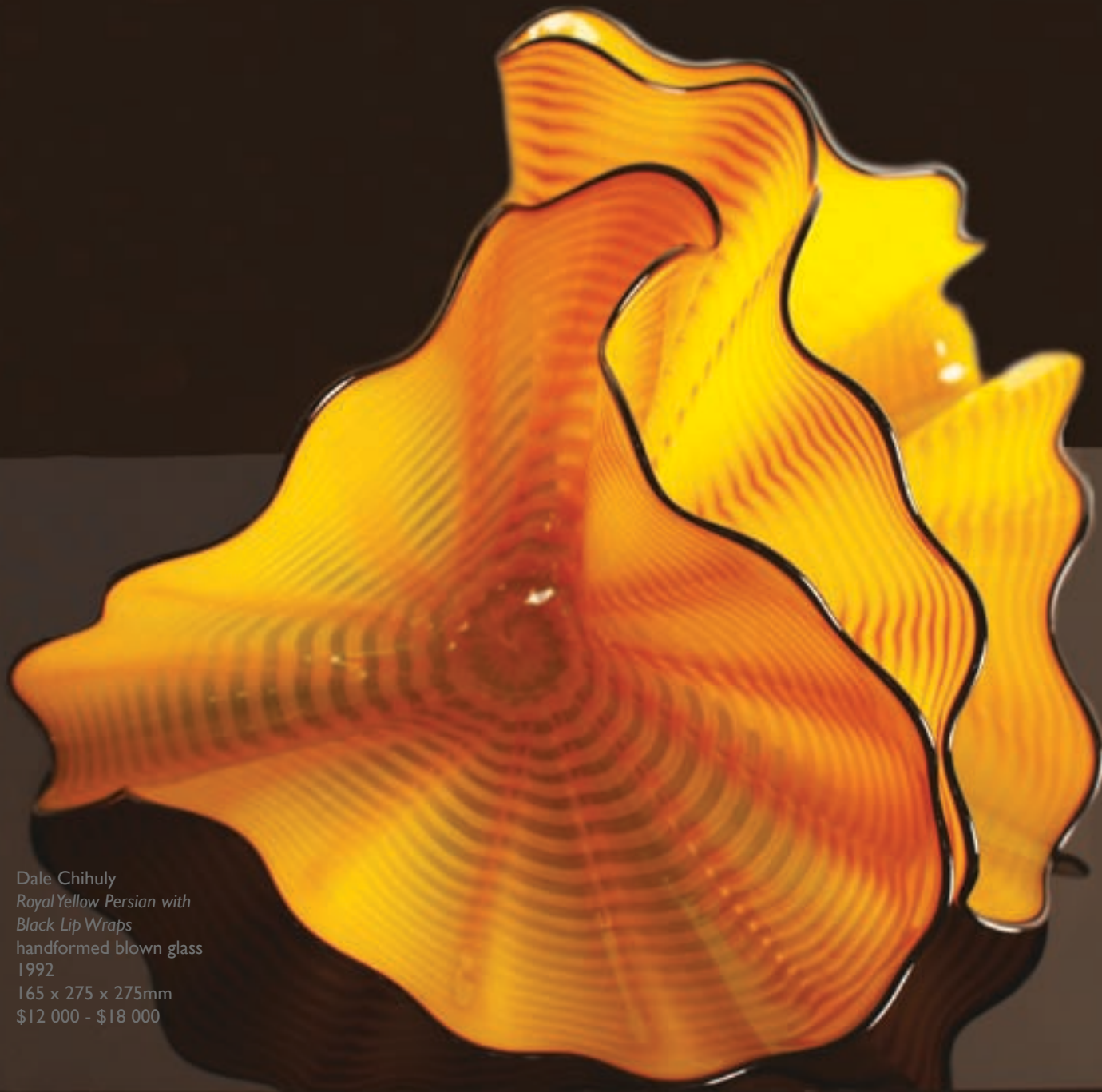


Shane Cotton *Hopa* oil on canvas, 1998, 1857 x 1550mm \$130 000 - \$170 000

Entries invited for this auction Contact Ben Plumbly ph 09 354 4646 021 222 8183 or ben@artandobject.co.nz

objects of desire • DECEMBER 2009

A+O is pleased to announce a new sale category focusing on the unique, esoteric, rare and desirable from all periods. Limited to just one hundred items this catalogue will be a tribute to the singular artistic visions in the decorative arts



Dale Chihuly
*Royal Yellow Persian with
Black Lip Wraps*
handformed blown glass
1992
165 x 275 x 275mm
\$12 000 - \$18 000

Entries invited for this auction Contact Ross Millar ph 09 354 4646 021 222 8185 or ross@artandobject.co.nz

Twentieth Century Design

THURSDAY 20TH AUGUST 6.45PM

3 Abbey Street, Newton, Auckland

VIEWING:

Opening Event	Friday	14 August	6.00pm	–	8.30pm
	Friday	14 August	10.00am	–	5.00pm
	Saturday	15 August	11.00am	–	4.00pm
	Sunday	16 August	11.00am	–	4.00pm
	Monday	17 August	11.00am	–	4.00pm
	Tuesday	18 August	9.00am	–	2.00pm
	Wednesday	19 August	9.00am	–	5.00pm
	Thursday	20 August	9.00am	–	2.00pm

Note: Exhibition images will be uploaded on a regular basis at www.artandobject.co.nz hit NEWS on navigation bar - please check daily from the 14th to the 18th of August

451 John Osborne
Booklet of 6 Waitemata Beer Advertising Designs.
Football, Golf, Baseball, Boxing, Lacrosse & Wrestling
Goauche on paper; c.1940s
Each approx. 180 x 205mm
\$125 - \$175

452 John Osborne
Booklet of 6 Womens' Fur Coat Fashion Designs.
Goauche on paper: Inscribed copyright "JO-EB" Studio,
1946. Each approx. 145 x 145mm
\$75 - \$125

453 John Osborne
Booklet of 3 Dominion Wine Advertising Designs.
Never a Grizzle or Whine, The Toast of a Connoisseur
etc
Goauche on paper: Inscribed copyright "JO-EB" Studio,
1946. Each approx. 150 x 150mm
\$75 - \$125

454 John Osborne
3 Booklets of Advertising Designs Daisy Petal Loveliness,
Lotus Loveliness, All Hot Numbers & 3 x elegant
women's fashion sketches – 5 in total. Goauche on
paper: Inscribed copyright "JO-EB" Studio, 1946.
Various sizes
\$100 - \$150

455 John Osborne
2 Booklets of Advertising Designs inc. Dominion Wine x
2 & Queen Anne Chocolate x 2. Goauche on paper
Inscribed copyright "JO-EB" Studio, 1946. Various Sizes
\$100 - \$150

456 John Osborne
Booklet of Rhythmic Designs. Goauche on paper:
Inscribed copyright "JO-EB" Studio, 1946. Each approx.
150x115
\$75 - \$125

457 John Osborne
Large Booklet of 6 Queen Anne Chocolate Advertising
Designs.
*Ronald rushes Ruth, Ruth Rushes "Queen Anne"; Hector
Holds Heather etc*
Goauche on paper: Inscribed with copyright stamp and
typewritten verse
Each approx. 180 x 200mm
\$500 - \$1000

458 John Osborne
Booklet of Seaside Advertising Illustrations. Child with
Bucket & Spade, Boy with Ball etc. Goauche on paper
Circa 1940s. Each approx. 147 x 335mm
\$100 - \$200

459 John Osborne
Booklet of 17 Advertising Designs on Ice Cream theme
inc. *Ice Cream Frolics, No Need to Make a Hog of Yourself
but by Golly it is Good etc.* Goauche on paper
Inscribed copyright "JO-EB" Studio, 1946. Each approx.
165 x 150mm
\$500 - \$1000

460 John Osborne
Booklet of 4 Taylor's American Shoes promo. Designs
& a sheet of preliminary pencil sketches. Goauche &
Graphite on paper: Circa 1940s. Various Sizes
\$75 - \$125

461 John Osborne
Booklet of 2 Advertising Designs inc.
Feminine Perfection & Your Hearts Desire
Goauche on paper: Inscribed copyright "JO-EB" Studio,
1946. Each approx. 140 x 95mm
\$100 - \$150

462 John Osborne
2 Booklets of Advertising Designs inc. Shoe Repair & Furs
Goauche on paper: Inscribed copyright "JO-EB" Studio,
1946. Various Sizes
\$100 - \$150

463 John Osborne
2 Booklets of Bags Advertising Designs inc. *Bags for All
the Family & as LIGHT as a FEATHER etc.* Goauche on
paper
Inscribed copyright "JO-EB" Studio, 1946 with typed
descriptions and handwritten annotation in graphite
Each approx. 190 x 150mm
\$175 - \$250

464 John Osborne
Booklet of 4 Gloves & Hosiery Advertising Illustrations
In a Variety of Elegant and Modernist designs. A superb
period piece indicating the influence of modern art in
the mass media. Goauche on paper: Inscribed copyright
"JO-EB" Studio, 1946. Various sizes
\$175 - \$300

465 John Osborne
Booklet of 22 Menswear Advertising Designs: *Ties for
Tom, Dick & Harry, Avoid Hoarseness – Wear a Scarf etc*
Goauche on paper: Inscribed copyright "JO-EB" Studio,
1946. Various sizes
\$400 - \$600

466 Possibly John Osborne
3 Illustrations on card and one printed sign. 2 part
vehicle cavalcade, Women's Fashion Pose & Findlay's
Gold Krust Bread. Various sizes
\$75 - \$125

467 John Osborne
Large Booklet of 5 Advertising Designs for Homeware
and Women's Fashion. *See For Yourself, "OOH! What
Corker Colour" etc.* Goauche on paper
Inscribed copyright "JO-EB" Studio, 1946. Each approx.
170 x x 190mm
\$125 - \$200

468 John Osborne
Large Booklet of 13 Advertising Designs for Bags &
Fashion: *Modern Bags for Modern Misses, Travel of the
Future etc.* Goauche on paper: Inscribed copyright "JO-
EB" Studio, 1946. Various Sizes
\$250 - \$400

469 John Osborne
Booklet of 10 Advertising Designs for Women's Fashion
& Beauty. *Silhouette of Beauty, Lady Look Lovely, Be
Beautiful it Becomes You, Personalized Pansies etc*
This is a particularly highly finished and elegant booklet
of designs showing Osborne's versatility and ability to
capture mood. Goauche on paper: Inscribed copyright
"JO-EB" Studio, 1946. Each approx. 138 x 152mm
\$500 - \$1000

470 John Osborne
Booklet of 13 Footwear Advertising Designs: *Let Us
Shoe Them, Companions for Fun and Frolic, A Streamlined
Shoe for a Streamlined World.* A variety of dynamic and
ingenious designs shows Osborne's creative range
Goauche on paper: Inscribed copyright "JO-EB" Studio,
1946. Each approx. 140 x 155mm
\$500 - \$1000

471 John Osborne
3 Loose Advertising Designs for Unique Creations Home
Products: Soap Holder; Chip Basket etc. Goauche on
paper with annotations in Graphite.
Each approx. 120 x 160mm
\$75 - \$125



469



459



451



457



455



473



472

472 Bob Roukema for Jon Jansen wing black armchair with later floral upholstery raised on a cruciform base on four tapering legs. Designed 1952.
Edzer Duije Roukema (Bob Roukema) was employed in 1951 to run the first Jon Jansen store in Queen Street Auckland. In addition to running the store Roukema designed much of the furniture which Jon Jansen produced between 1951 and 1959.
\$2000-3000

473 A pair of John Crichton designed Hammock chairs with white powder coated metal frames and original canvas slip covers. A similar pair illustrated on the cover of *At Home: A Century of New Zealand Design* by Douglas Lloyd Jenkins
\$800 - \$1200

474 A Garth Chester bent plywood Curvesse chair. The classic New Zealand designed cantilevered chair; reputedly of which only 500 were made. This example in good condition.
Provenance: Held in a private Auckland collection for the last twenty years
\$2000 - \$3000

475 Clear Chair by Greg Smith, prototype edition 1 of 2, 2009.
clear acrylic
\$2000-\$3000



THE LEGACY OF GARTH CHESTER'S CURVESSE CHAIR - A MODERN HOMAGE

The 'Mau Mahara' exhibition and book produced in 1990 to celebrate 150 years since the signing of the Treaty of Waitangi, reintroduced the main centres of New Zealand to the 'Curvesse' chair, and unearthed a history of design and craft almost lost to our notice. These items of such everyday history seemed unique and full of promise, handcrafted and stitched, with a lustre of age and use, unlike the products from European and American wunderkinds being promoted by the ever expanding design store culture.

The 'Curvesse's' appeal comes partly from its clarity and economy of production; a truly 'No 8 wire' response which is also an incredible design classic - several thin sheets of water-glue softened plywood, with two lengthwise cuts to produce the arms, laminated together in a mould until set. Easier than pavlova for a handy chap with some spare time in the shed!

Unlike many of the other objects in the exhibition, Garth Chester's chair was designed as a production piece. His partner (and cousin) in the original business, A L Williams described the possibilities that were never achieved in his or Chester's life times; the drive to move from manual to mechanised production, the development of a variety of models (including a two seater version) and models in other materials. Produced near the end of the World War II as a home-grown response to the work of Aalto Alvar and Marcel Breuer, the 'Curvesse' was also a design with a market in mind.

The war had produced many casualties requiring nursing and recuperation facilities for the various ailments and injuries of a nation in recovery. TB and other degenerative diseases had claimed millions of lives before and during the war, leading to an exponential growth in care facilities in the Western World that required furniture and seating which was easy to clean and low maintenance. Plywood, or alternating veneers layered into sheets has a history going back centuries, but came to be known in its modern form after the development of the veneer lathe by Dr K. Asano in Nagoya, 1907. The Japanese Imperial Army developed landing craft using its unique structural properties, as did early aviators, strengthening their cloth and wire biplanes. Its use and influence in modernist furniture production stems from Europe and the now iconic piece by Gerrit Rietveld, ('Beugelstoel' of 1927) as well as those by Thonet and Alvar developed during the early 1930's. The capabilities of plywood were extended to many situations including medical - the Eames later developing leg splints, etc for the armed forces. From modernist ideology it was but a small step to the development of sanitary seating and furniture for the convalescing, as designed for the Paimion Sanatorium by Aalto.

The plywood 'Curvesse' fulfilled many of the modernist requirements - 'form follows function', 'truth to materials', 'unified structure' - yet also seemed to fit with the more elegant era of 'cursive line', somewhere between Grey and Makintosh. Several of Chester's designs over the coming years are based around ply's ability to be formed around curves, as in the child's barber chair for 'Kay's Salon' and his design for a child's pushchair - a design which he tried to sell abroad. Had he been able financially, after a factory fire, relocating and starting again, it seems possible he may have ventured materially even further afield, carried along by developments into synthetic fibres and composites developed

during the war. His adoption in the 1950's of bent steel rod resulted in a popular three-legged chair design called the 'Bikini' (1955) which was employed as seating in the fashionable Ca d'Oro coffee bar in Auckland. Other interior commissions came through friend and architect Allen Rigby of 'Rigby, Mullan' and architect Paul Pascoe in Christchurch. His wife Nan points too many areas of exploration throughout the years, from aerodynamics to heating products in various materials, some produced with close friends, others for national businesses, some yet to see the light of day. Not content with just designing, she remembers him working with local theatre in his spare time, constructing sets and working backstage.

His collection of films, made over many years, has languished, hidden from view since being given to this city's Museum, to be catalogued and copied. Within those deteriorating celluloid frames of forgotten silver, rest a remarkable piece of New Zealand's design history - of a highly innovative, articulate renaissance man, who steadfastly endeavoured to follow his muse, in a time where individuality and difference was often thwarted by the mechanisms and machinations of commercial reality and the era's 'curators' of style. Yet still to be fully appreciated, 'Garth' Garnet Chester's designs and influence stands alongside that of our now iconic two dimensional creators such as McCahon, Lusk and Fairburn - and on equal footing with works produced by Breuer for Isokon or Ray and Charles Eames in America. (Had Keith Murray remained in this country of his birth, would he still have produced the ceramic icons of the modernist era?)

In the 65 years since it was first produced, the 'Curvesse' still holds a fascination for those with a curiosity and passion for the unique and inspirational of our recent cultural heritage. That his design still holds the power to 'wow' and translates effortlessly into other materials indicates the strength and universality of its conception. It seems also to epitomise many of its creator's own attributes- elegance, resilience, individuality, durability to name but a few.

In reinterpreting the Curvesse, the 'Clear Chair' condenses the dynamics of Chester's original design into an almost transparent act, the self supporting curves becoming an exemplar of unified design, doing away with the feet required by a market once tied to traditional furniture ideology. From an era of almost slavish acceptance of British 'superiority' and leadership, Garth Chester stands out as one of this country's great three dimensional designers and artists, though sadly, like many originals he died relatively young and remained mostly unsung in his own time.

GREG SMITH

476 A pair of Grant Featherston designed Contour chairs, each raised on four tapering legs
\$1000 - \$2000

477 A Grant Featherston designed Contour chair with later floral upholstery
\$200 - \$300

478 A David Trubridge designed Body Raft in steam bent wych elm with stainless steel screws. This early example with unusual splayed interior support ribs. 2100mm x 780mm x 620mm
\$4500 - \$6500

479 Peter Young designed chest of drawers in birds-eye maple with nine flush fitted drawers with black American walnut handles in a beveled picture frame case, raised on four tapering & pointed legs
Signed on rear and dated 2001.
H.1060mm W.840mm
\$3250 - \$4500

480 A three piece late 1950's New Zealand made 'banana suite' with couch and two matching armchairs with green and white vinyl covering.
\$3000 - \$4000

481 A New Zealand made 1950s angle poise teak floor lamp
\$800 - \$1200

482 A 1950s English Mole Richardson Industrial Theatre Light raised on a telescopic tripod stand.
\$800 - \$1600

483 Original bookcase created by Hayman & Whetton, 2000. Incorporating South American mahogany, American cherry, Australian silky oak, poplar, Angolan wenge, South American bubinga timbers. A full list of the component sections and timbers is available on request. The upper section with glazed, locking doors, matching keyed to the paneled doors in the lower section. W.1460, H.2450mm
\$1500 - \$3000

484 Set of Six Ed Archer chairs designed by Phillipe Starck for Driade in 1986. Made of a tubular steel body with spring units for comfort. Rear legs are polished cast aluminum with upholstery in red Russian leather
\$4000 - \$6000

485 Set of Six Ed Archer chairs as above
\$4000 - \$6000

486 A set of four 1980's Memphis style chairs
\$600 - \$800

487 Le Corbusier designed Petit Confort LC2 sofa with chrome framed ivory-taupe fabric upholstered cushions
\$1500 - \$2000

488 An Italian Tavertine marble rectangular desk
1470 x 750mm
\$200 - \$400

489 A Peter Draenert designed 1010 lift dining table with circular frosted glass top raised on a cylindrical plinth base with verdigris patina. D. 1270mm
\$800 - \$1200

490 An Acebis International table circular extension dining table opening to reveal two draw leaves raised on fluted cylindrical plinth from a circular marble foot. D.1200mm
\$2000 - \$3000

491 White laminate rectangular topped desk raised on four white steel tapering square legs (with a power/computer cord substructure)
2000 x 1000mm
\$500 - \$900

492 Rectangular plywood topped office table on anodized steel frame and legs
2000x1000mm
\$600 - \$1000

493 A Norman Foster designed industrial office desk with plate glass top raised on a black enameled chromium plated steel base. 600 x 800mm
\$1800 - \$2200

494 Pair of Ernest Race designed rocking chairs. Refurbished white painted and with green check upholstered cushions
\$800 - \$1000

495 Pair of armchairs attributed to Ernst Race with original green plush upholstery raised on tapering legs
\$700- \$1000

496 An Ercol 1950s oak dining table and four chairs
\$600 - \$1200

497 A set of six Arne Jacobsen design, Fritz Hansen manufactured Series 7 'Ant' chairs. White paint finish.
\$600 - \$800

498 Large 1980s rectangular glass topped, steel framed table. 3100 x 1000mm
\$1200 - \$2000

499 A Harry Bertoia style black wire chair
\$100-200

500 A 1950s dining suite with oak framed extension dining table with Formica top and six chairs each reupholstered in vinyl white matched with black, orange, blue, red, green and yellow. 1050 x 900 mm
\$1200 - \$1800

501 A Vladimir Kagan style teak framed couch with attached side table raised on splayed legs
\$800 - \$1200

502 A NZ made bench seat with slated timber top raised on aluminum base
L. 2000, W.800mm
\$400-600

503 A white rectangular laminate topped dining table on chrome steel sprung legs by Piet Hien and Bruno Mathsson manufactured by Fritz Hansen. 1830 x 810mm.
\$1400-\$2000

504 Tony Lane gilt wood mirror designed for Metropole Lounge Bar, Parnell, painted on applied discs with a splayed branch design. 940 x 1200mm
\$1800-3000

505 Yngve Ekstrom for Swedese furniture Lamino European beechwood framed lounge chair. Impressed label to back frame. c.1965
\$1850 - \$2250

506 A two seater sofa with laminated beechwood frame by Danish designer Magnus Olsen. C. 1980
\$1200 - \$1600

507 A set of 4 moulded plastic dining chairs by Danish designer Steen Ostergaard for Cado. Impressed date and manufactures label to underside of chairs.
\$1000 - \$1500

508 A Pair of oak framed plank lounge chairs by Danish designer Hans Wegner for Getama Mobiler. Model GE – 375. Original fabric upholstery. Impressed Manufactures label to the underside of each chair. c.1955
\$3500 - \$4500

509 Set of six conference chairs with chrome frames and rosewood arms by Swedish designer Sigvard Bernadotte together with a conference table in rosewood with aluminum base by Danish manufacturers Nipu C. 1970.
\$4000 - \$6000

510 A Michele De Lucchi First chair by Memphis with a grey tubular steel frame with painted wood seat rondel form back and ball form arm supports. Designed 1983
\$1000 - \$1500

511 Aeron office chair designed Donald Chadwick and William Stumpf for Herman Miller. Recycled aluminum and fiberglass reinforced polyester frame and base with polyester mesh seat and back on castors.
\$1000 - \$1500



479



484



495



478

512 A Quinta chair designed by Mario Botta (1985) with epoxy-coated black steel frame with perforated sheet steel seat and back rest
\$600 - \$800

513 A Lola Mundo chair designed by Philippe Starck (1986) with ebonised wood seat and folding back raised on cast aluminum legs.
\$800 - \$1200

514 A Crown Lynn hand crafted vase by Daniel Steenstra painted with bamboo. H.230mm
\$300 - \$500

515 A Crown Lynn hand crafted vase by Daniel Steenstra painted with a banded pattern. H.230mm
\$300 - \$500

516 A Crown Lynn hand crafted vase by Daniel Steenstra painted with flowers on an olive ground. H.230mm
\$300 - \$500

517 A Crown Lynn Bohemia ware vase by Mirek Smisek with incised bands to the neck. Unmarked. H.130mm
\$200 - \$300

518 A Olive Jones dish molded with a manaia figure, olive green glaze with small frit evident. Signed to the base
\$400 - \$600

519 A pair of Crown Lynn Dorothy Thorpe ball handles. Unmarked
\$100 - \$200

520 A pair of Parker Pottery Lincoln Wines flasks with molded decoration of a tekoteko figure with a reverse decoration of a manaia.
\$400-\$800

521 A Set of Crown Lynn 'Trillos Restaurants tableware
\$500 - \$800

522 A Beswick 1950's bowl- shape 1349 hand- painted with a patch-work pattern in turquoise, black and yellow
\$100 - \$200

523 A 1960's Bourne Denby Glynbourne vase by Glyn Colledge, painted with an abstract floral pattern. H.280mm
\$175 - \$275

524 A 1960's Bourne Denby Glynbourne vase by Glyn Colledge, similar to the above lot. H.230mm
\$175 - \$275

525 A 1960's Bourne Denby Glynbourne vase with loop handle by Glyn Colledge, painted with an abstract floral pattern. H.300mm
\$200 - \$300

526 A Royal Copenhagen Fajance flask vase with painted with an abstract pattern in panels in white on a mottled ecru ground. H.220mm
\$300 - \$400

527 A Royal Copenhagen Fajance vase painted with abstract floral patterns in brown and blue. h.160mm
\$150 - \$250

528 A Royal Copenhagen Fajance flask vase with painted with an abstract pattern in panels in dark and light blue. H.220mm
\$300 - \$400

529 A Danish 1950's bowl painted in concentric bands. d.300mm
\$100 - \$200

530 A good Danish rosewood veneered credenza with sliding cupboards with countersunk handles raised on tapering legs. L.2000mm
\$1500 - \$2500

531 A French Art Deco bedroom suite
\$700 - \$1000

532 An Art deco black lacquered piano and matching footstool
\$1000-\$1500

533 Erte (Romain de Tiroff) cold painted bronze sculpture *Balinese* (from *Les Rois de Legendes*). Limited edition 355/375 Marked Chalk and Vermillion and Sevenarts and dated 1990. Originally issued by the Dyansen Gallery. H.570mm

\$800 - \$1400

534 Erte, *My Life / My Art, an autobiography* Limited edition 314/1000 signed copy produced for the Dyansen Galleries, published by Dutton, NY 1989. With original solander box case.

\$100 - \$200

535 A Wedgwood Keith Murray designed dinner service – 36 pieces – some faults

\$800 - \$1600

536 A 1930s brown and cream Bakelite squat circular fan heater

\$100-200

537 A French 1950s carved hardwood Yoruba style bust. The stylised head with elongated neck and coiffure inset with copper rondels and with copper band to the neck section raised on a plinth base. H.350mm

\$500-\$800

538 A Pli chair with orange plush covering on a tubular steel base

\$400 - \$600

539 A Lignet Roset Alster leather armchair and matching ottoman designed by Emmanuel Dietrich each raised on a chromium plated steel base

\$1600 - \$2400

540 A set of six Ludwig Mies Van Der Rohe designed Flat bar MR50 Brno chairs with purple leather upholstery with padded arms and polished stainless steel frames.

\$2400-\$3400

541 A set of six Ludwig Mies Van Der Rohe designed Flat bar MR50 Brno chairs with purple leather upholstery with padded arms and polished stainless steel frames.

\$2400-\$3400



533



540

542 A Poul Kjaerholm design PK24 chaise longue manufactured by Fritz Hansen, 1995. Stainless steel frame with woven wicker cover and leather headrest. Label affixed to frame.

\$9000 - \$12000



542

543 Pair of Piero Fornasetti obelisk table lamps. H.900mm
\$2750 - \$3250

543a Jeff Koons – 'Balloon Dog (Blue)' slip cast porcelain sculpture with silver and blue reflective glazes. Editioned work, dated 2002. D.265mm
\$5500 - \$7000

544 A Murano Venini 'Chinese' lidded ovoid turquoise glass vase. H.310mm
\$400 - \$600

544a A Murano Venini 'Chinese' lidded ovoid amethyst glass vase. H.310mm
\$400 - \$600

545 A 1950s green glass dish and a pedestal dish
\$50 - \$80

546 A Sommerso glass vase by Flavio Poli pieced to the centre and top and with pale blue tinted and yellow glass cased within clear colorless glass. H.280mm
\$1000 - \$2000

547 A good Dino Martens 'Oriente' design glass dish with multicolored glass encased in clear glass. W.140mm
\$1000 - \$2000

548 An Italian Arte Vetairia Muranese (AVEM) glass bottle vase in the manner of Dino Martens with internal multicolored fligrana and ribbons cased in clear glass. H.350mm
\$2000 - \$3000

549 A good Italian Murano Seguso glass model of a bull with amber tinted body and red cased glass head and shoulder section. Original Murano glass sticker to the base. L.320mm
\$800 - \$1200

550 An Italian Murano glass vase by Flavio Poli of cylindrical form, yellow, white and blue cased in clear glass. H.300mm
\$600 - \$800

551 A Driade glass Vase "Hera" by Borek Sipek. H.590mm
\$1200 - \$2200

552 A Driade yellow glass Vase "Argencourt" by Borek Sipek. H.710mm
\$1000 - \$2000

553 A Murano Venini hand blown pink and white cased glass Fazzoletto (handkerchief) vase
\$400 - \$600

554 A large Hoglund hand blown amethyst glass bowl with internal vertical white bands. D.270mm
\$400 - \$600

555 A green tinted octagonal art glass vase with facet cut walls. H.150mm
\$150 - \$300

556 Swedish Reijmyre decanter
\$30 - \$50

557 A Kosta glass decanter made in the form of a hen by Vicki Linstrand. Faulted at the neck section
\$20 - \$40

558 A green tinted Clutha glass bowl
\$50 - \$100

559 An Italian Seguso red glass bowl with folded lip and swirling gold internal decoration. d.290mm
\$280 - \$320

560 A Venetian Murano glass hen, clear cased white and red glass
\$200 - 300

561 A large Contour glass bowl by Bob Crooks (Scottish, 1965 -) Engraved signature. 570 x 350 x 200mm
\$800 - \$1200

562 Flavio Poli, probably for Seguso, heavy glass table lamp base, with sommerso technique in blues and clear glass. H.380mm excluding fitting
\$500 - \$800

563 A Tapio Wirkala style glass platter with fine concentric bands radiating out from the milk glass well
 d.490mm
\$400 - \$600

564 A Swedish Orrefors. blown grey and clear cased expo vase of flattened ovoid bottle form attributed to Nils Landberg. Engraved on the base *Orrefors Expo 254-56*. H.350mm
\$800 - \$1500

565 An Art glass vase with multicolored swirling internal bands
\$30 - \$50

566 WMF Ikora glass circular shallow bowl
\$40 - \$70



567 A 1960s cylindrical glass vase acid etched with an eagle perched on a branch. H.210mm
\$40 - \$80

568 An English Satinsteel stainless steel dish. W.510mm
\$100-200

569 A 1960's Japanese wooden doll. H.300mm
\$100 - \$200

570 A 1950's oak coffee table with plate glass tiered top supported on three tapering legs with capped feet
\$300 - \$400

571 A Danish 1950s Krenit enamel bowl. D.250mm
\$100-200

572 A Valauris vase with orange lava glaze. H.260mm
\$100-200

573 A German vase of slab form with a short neck decorated with a relief pattern rondel pattern on a blue and ecru ground. H.250mm
\$150 - \$250

574 A German pottery vase of cube form pierced to the centre and top with a brown and ecru glaze. H.110mm
\$100 - \$200

575 A German blue glazed pottery vase. H.250mm
\$150 - \$250

576 A German pottery vase of cylindrical shape with orange and ecru lava glaze H.300mm
\$150 - \$250

577 A German studio pottery floor vase with lava glaze. H.420mm
\$200 - \$300

578 A German studio pottery vase with a single handle painted with tribal inspired designs on an orange ground
\$100-\$200

579 A German pottery floor vase with brown lava glaze with abstract patterning on a blue and cream ground H.500mm
\$200 - \$300

580 A vintage Auckland Star Special edition advertising bill board poster commemorating the Historic Moon landing '*Moon Lift- off Drama*' Dated Tuesday July 22 1969
\$100 - \$200

581 A vintage Auckland Star advertising bill board poster commemorating the Historic Moon landing '*Pictures*' dated Friday July 25 1969
\$100 - \$200

582 A vintage Auckland Star advertising bill board poster commemorating the Historic Moon landing Special edition '*Splash down*' dated Friday July 25 1969
\$100 - \$200

583 A vintage Auckland Star Special edition advertising bill board poster commemorating the Historic Moon landing '*Moon man walks*'
\$100 - \$200

584 A vintage Auckland Star Special edition advertising bill board poster commemorating the Historic Moon landing '*Moon walk picture*' Dated Monday July 21 1969
\$100 - \$200

585 A vintage Auckland Star Special edition advertising bill board poster commemorating the Historic Moon landing '*Moon walk decision*' dated Monday July 21 1969.
\$100 - \$200

586 A vintage Auckland Star Special edition advertising bill board poster commemorating the Historic Moon landing '*Moon lift- off drama*' dated Tuesday July 22 1969
\$100 - \$200

587 A vintage Auckland Star Special edition advertising bill board poster commemorating the Historic Moon landing '*Moon team Link-up*' dated Tuesday July 22 1969.
\$100 - \$200

588 A GEC Weltron space age design 1970's UFO stereo system with turntable and cassette player complete with auxiliary speakers
\$800 - \$1200

589 A Verner Panton designed Panthella floor lamp with white dome shade
\$800 - \$1200

590 A Space age design mirror table lamp
\$200 - \$300

591 A pair of 1960s space age design plastic side lamps
\$200 - \$400

592 An American 1960s Sunbeam Corporation plastic wall clock with orange and blue coloured panels
\$100 - \$200

593 A 1970s white plastic coat rack. H.1560mm
\$300 - \$500

594 A pair of Verner Paton for Vitra Panton chairs
\$500 - \$800

595 A 1970's hanging light with blue and green cut aluminum slats
\$300 - \$400

596 An Italian Eriotti 1960s salon 'Medusa' floor lamp with four arms raised on a chromium plated stand on castors
\$500 - \$800

597 An arti-fakts flip file and pen holder
\$100 - \$200

598 A 1960s folding Perspex chair
\$200- \$400

599 A Flos Ara lamp designed by Philippe Starck of conical horn shape
\$400 - \$600

600 A Driade "Simon II" seven branch candleholder in polished brass by Borek Sipek. H.450mm
\$ 1800 - 2200

601 A set of six Ludwig Mies Van der Rohe MR50 Brno chairs with polished stainless steel frames upholstered in black leather with padded arms
\$3000 - \$4000

602 An Otto Blumel Nymphenburg chromium steel hall stand, originally designed in 1908. This example manufactured by Classicon in the 1990s.
\$800 - \$1200

603 A Zanotta Genni 820 chair and footstool designed by Gabriele Mucchi
\$2500 - \$3500

604 An Italian Artemide Pausania table lamp designed by Ettore Sottsass Jr
\$1000 - \$1500

605 An Italian Marble Top Table in the style of Ico Parisi c.1950s.
\$2800 - \$4200

606 An Italian Standard Lamp Lacquered wood and brass c.1940s
\$ 900 - 1400

607 A Charles Eames designed Herman Miller coffee table with laminate top
\$400 - \$600

608 A George Nelson designed Herman Miller side table
\$400 - \$600

609 An Isamu Noguchi style coffee table with ebonised legs interlocking to form a support for the biomorphic shaped glass top.
\$600 - \$800

610 A Susana chair designed by Gabriele Mucchi for Zanotta with chromium plated steel frame
\$1500 - \$2000



611 Carlo Columbo for Poliform wardrobe system comprising two units, one two door and the other three door; each free standing with fitted drawers and compartments to the interior.
\$8000 - \$12000

612 A set of six German Tecta cantilevered chairs each with chromium plated steel frame and white wicker seat and back
\$2000 - \$3000

613 A 1950s Scandinavian beech armchair with hoop back held on spindle supports with tapering splayed legs united by stretchers
\$600 - \$900

614 A 1960s dining suite. The rectangular dining table with Formica top and with four black vinyl upholstered button back chairs
\$500 - \$800

615 A pair of 1950s oak framed doors the central panel with linen fold detailing. 2050 x 760mm
\$350-500

616 Seven black vinyl upholstered chrome framed bar stools
\$650 - \$800

617 A replica Soft Pad office chair
\$300 - \$400

618 An elongated palette shaped coffee table
\$90 - \$130

619 Table lamp with a mahogany turned base in the manner of faux bamboo
\$90 - \$130

620 Mahogany standard lamp with an 'interwoven' carved shaft.
\$180 - \$220

621 Oblong teak coffee table with caned magazine rack
\$250 - \$300

622 Teak framed, black leather upholstered 1970s armchair
\$250 - \$300

623 Chrome framed 1980s armchair with blue fabric slung upholstery
\$150 - \$200

624 A 1950s chromed tubular steel framed full length dressing mirror; raised on shepherd's castors
\$400 - \$500

625 A black leather replica Barcelona ottoman
\$300 - \$350

626 1970s mahogany framed chaise longue with black fabric upholstery. With a separate oblong bolster cushion
\$450 - \$600

627 A 1960s pedestal dining table with white laminate top and four matching chairs
\$500 - \$800

628 A 1970s coffee table with glass top raised on a tulip form base
\$200 - \$300

629 A Whites aviation aerial photo of central Auckland
\$200 - \$300

630 Kartell orange plastic 'Componobili' round-up of three sections
\$210 - \$300

631 A fabric upholstered settee and chair
\$400 - \$500

632 A kidney shaped coffee table with steel legs in the manner of Garth Chester
\$90 - \$130

633 Three 1970s dining chairs with unusual back splats
\$120 - \$200

634 Marco Maran for Parri grey moulded plastic stool
\$30 - \$60

635 Simon James Design white laminate circular topped coffee table
\$250 - \$300

636 Replica Noguchi glass coffee table with thick plate glass top
\$400- \$600

637 Set of five AirRest dining chairs, c.1974
\$400 - \$500

638 Bertoia style white wire framed chair
\$150 - \$200

639 A 1960s pendent light fitting with wooden frame suspending five glass pendent shades
\$300 - \$400

640 Circular glass topped coffee table on triangular chromed tubular steel base
\$90 - \$130

641 A set of six Ludwig Mies Van Der Rohe style Brno chairs with white leather upholstery and polished stainless steel frames.
\$1000 - \$2000

642 Superellipse dining table in beech laminate designed by Piet Hein and Bruno Mathsson along with a set of four Arne Jacobsen design Series 7 chairs, manufactured by Fritz Hansen. All with affixed labels, c.1997/98
\$2000 - \$2500

643 Twenty three pieces of Homemaker 1950s china.
\$700-1000

644 An Arabia 1950s stoneware dinner service
\$90 - \$180

645 Ten Rosenthal studio line Tapio Wirkkala designed Polygon pattern vases and candle stands
\$200 - \$300

646 Piero Fornasetti early edition plate, in original green box
\$400 - \$500

647 Fornasetti design plate, black boxed
\$200 - \$400

648 Poole ceramic 'fish baker' dish
\$300 - \$400

649 A chromium plated steel and glass light fitting
\$200 - \$300

650 A large vintage Greek Flokati rug with thick yellow wool pile
2700x1800mm
\$350 - \$500

651 A set of eleven Danish Mirakel wall plaques designed by Bjorn Wiinbald for Nymolle transfer decorated with whimsical scenes of courting couples engaged in various pursuits through the months of the year. D.150mm
\$200-\$300

652 A Denby 1950s Tibor Reich designed cabinet plate incised with a figure of a young man and woman
\$100 - \$200

653 A Moorcroft McIntyre two handled vase –painted in the manner of Aurelain ware with tulip and other flowers on a salmon and blue ground, h.160mm. Unmarked
\$400 - \$600

654 A Wedgwood 1960s vase, design 63 pattern, transfer printed with an abstract design. H.220mm
\$40 - \$60

655 Two fibreglass loungers
\$200 - \$400

656 A 1950s teak framed arm chair
\$50 - \$100

657 A 1960s mahogany teak veneered sideboard with three drawers above cupboards
\$400-600

658 A 1960s New Zealand Don Lorong designed mahogany coffee table raised on four casters
\$250-300

659 A brightly coloured 1970s wool floor rug
\$150 - \$250

660 A 1960s Dryland rectangular coffee table and a side table
\$350-500

661 An oak 1950s two tiered coffee table
\$100-200

662 A set of three Robin Day designed NZ made Zip industry chairs with red plastic shell seats
\$200-300

663 A pair of Robin Day designed NZ Made Zip industry chairs with yellow plastic seats
\$100-200

664 A pair of black vinyl 1970's lip chairs
\$200 - \$400

665 A 1950s English coffee table with anodized aluminium top.
\$300 - \$400

666 A 1980s rectangular glass topped dining table raised on two V-wing glass supports
1800 x 860mm
\$200 - \$400

667 A 1980's armchair with black and white leather upholstery
\$400 - \$800

668 An aluminum framed dining table with 'cracked ice' glass top
\$200 - \$400

669 An aluminum framed hall table with 'cracked ice' glass top
\$200 - \$400

670 An aluminum framed bar table with 'cracked ice' glass top and two bar stools
\$300 - \$500

671 Three Italian bar stools with black leather seats
\$400 - \$600

672 A 1960's teak credenza with three central drawers flanked by cupboards. L.1350mm
\$400 - \$600

673 Pair of galvanized steel butterfly chair frames
\$100-\$200



674 An unusual multicolored Formica table with games board inlaid on top raised on tables chrome legs.
 645 x 935mm.
\$300-500

675 Formica side table
\$20 - \$40

676 1970s mosaic tile top rectangular coffee table
 1000 x 400mm
\$200 - \$400

677 A 1950's Danish coffee set with hand-painted cups and saucers
\$80 - \$120

678 Royal Academy of Arts poster: 'Sensation' Young British Artists from the Saatchi Collection. 750 x 500mm
\$100 - \$200

679 A Piet Mondrain print
\$20-40

680 A 1960s folding drinks trolley with chromium plated framing
\$40 - \$60

681 A pair of spherical red glass pendent lamps with EXIT stencilled on each. Ex the Regent Picture Theatre. D.145mm
\$350 - \$450

682 Pair of ceiling dome light fittings, milk glass shades within bronzed frames. Ex the Choral Halls, Auckland University, c.1920s, removed during renovations in the 80s
\$600 - \$75

683 All steel stool, tubular legs with adjustable height, circular seat
\$150 - \$200

684 Chrome and enamel single rotor milkshake machine
\$125 - \$175

685 Crown Devon sugar and cream jug, grey glaze with red detailing and leaf pattern
\$75 - \$100

686 Nest of three glass topped, metal framed occasional tables
\$150 - \$250

687 A squat spherical ceramic vase with lustere blue glaze. D.190mm
\$50 - \$70

688 A large glass sculpture of two figures. H.1080mm
\$200 - \$400

689 Pair of Italian Fantoni triangular ceramic dishes with turquoise glazed interiors
\$100 - \$150

690 Rosenthal Studioline black glazed porcelain twin vase, raised from a circular plinth base.
\$40 - \$80

691 Georg Jensen stainless steel kidney shaped hors d'oeuvre dish
\$80 - \$120

692 Sabino cast glass vase, with frosted and polished finish to a high relief design of a wooded landscape encircling the walls. H.260mm
\$500 - \$1000

693 Teak veneered large ice bucket
\$100 - \$150

694 West German porcelain 'Egyptian' large vase
\$150 - \$200

695 Tall red glazed West German ceramic vase
\$200- \$250

696 Large West German ewer vase
\$150 - \$200

697 West German cylindrical vase with dark blue and turquoise glazes. H.400mm
\$100 - \$150

698 Verner Panton style light shade
\$200 - \$300

CONDITIONS OF SALE

NOTE IT IS ASSUMED THAT ALL BIDDERS AT AUCTION HAVE READ AND AGREED TO THE CONDITIONS DESCRIBED ON THIS PAGE. ART+OBJECT DIRECTORS ARE AVAILABLE DURING THE AUCTION VIEWING TO CLARIFY ANY QUESTIONS YOU MAY HAVE.

1 REGISTRATION: Only registered bidders may bid at auction. You are required to complete a bidding card or absentee bidding form prior to the auction giving your correct name, address and telephone contact + supplementary information such as email addresses that you may wish to supply to ART+OBJECT

2 BIDDING: The highest bidder will be the purchaser subject to the auctioneer accepting the winning bid and any vendor's reserve having been reached. The auctioneer has the right to refuse any bid. If this takes place or in the event of a dispute the auctioneer may call for bids at the previous lowest bid and proceed from this point. Bids advance at sums decreed by the auctioneer unless signaled otherwise by the auctioneer. No bids may be retracted. The auctioneer retains the right to bid on behalf of the vendor up to the reserve figure.

3 RESERVE: Lots are offered and sold subject to the vendor's reserve price being met.

4 LOTS OFFERED AND SOLD AS DESCRIBED AND VIEWED: ART+OBJECT makes all attempts to accurately describe and catalogue lots offered for sale. Notwithstanding this neither the vendor nor ART+OBJECT accepts any liability for errors of description or faults and imperfections whether described in writing or verbally. This applies to questions of authenticity and quality of the item. Buyers are deemed to have inspected the item thoroughly and proceed on their own judgment. The act of bidding is agreed by the buyer to be an indication that they are satisfied on all counts regarding condition and authenticity.

5 BUYERS PREMIUM: The purchaser by bidding acknowledges their acceptance of a buyers premium of 15% + Gst on the premium to be added to the hammer price in the event of a successful sale at auction.

6 ART+OBJECT IS AN AGENT FOR A VENDOR: A+O has the right to conduct the sale of an item on behalf of a vendor. This may include withdrawing an item from sale for any reason.

7 PAYMENT: Successful bidders are required to make full payment immediately post sale – being either the day of the sale or the following day. If for any reason payment is delayed then a 20% deposit is required immediately and the balance to 100% required within 3 working days of the sale date. Payment can be made by Eftpos, bank cheque or cash. Cheques must be cleared before items are available for collection. Credit cards are not accepted.

8 FAILURE TO MAKE PAYMENT: If a purchaser fails to make payment as outlined in point 7 above ART+OBJECT may without any advice to the purchaser exercise its right to: a) rescind or stop the sale, b) re offer the lot for sale to an underbidder or at auction. ART+OBJECT reserves the right to pursue the purchaser for any difference in sale proceeds if this course of action is chosen, c) to pursue legal remedy for breach of contract.

9 COLLECTION OF GOODS: Purchased items are to be removed from ART+OBJECT premises immediately after payment or clearance of cheques. Absentee bidders must make provision for the uplifting of purchased items (see instructions on the facing page)

10 BIDDERS OBLIGATIONS: The act of bidding means all bidders acknowledge that

they are personally responsible for payment if they are the successful bidder. This includes all registered absentee or telephone bidders. Bidders acting as an agent for a third party must obtain written authority from ART+OBJECT and provide written instructions from any represented party and their express commitment to pay all funds relating to a successful bid by their nominated agent.

11 BIDS UNDER RESERVE & HIGHEST SUBJECT BIDS: When the highest bid is below the vendor's reserve this work may be announced by the auctioneer as sold 'subject to vendor's authority' or some similar phrase. The effect of this announcement is to signify that the highest bidder will be the purchaser at the bid price if the vendor accepts this price. If this highest bid is accepted then the purchaser has entered a contract to purchase the item at the bid price plus any relevant buyers premium.

IMPORTANT ADVICE FOR BUYERS

THE FOLLOWING INFORMATION DOES NOT FORM PART OF THE CONDITIONS OF SALE, HOWEVER BUYERS, PARTICULARLY FIRST TIME BIDDERS ARE RECOMMENDED TO READ THESE NOTES.

(A) BIDDING AT AUCTION: Please ensure your instructions to the auctioneer are clear and easily understood. It is well to understand that during a busy sale with multiple bidders the auctioneer may not be able to see all bids at all times. It is recommended that you raise your bidding number clearly and without hesitation. If your bid is made in error or you have misunderstood the bidding level please advise the auctioneer immediately of your error – prior to the hammer falling. Please note that if you have made a bid and the hammer has fallen and you are the highest bidder you have entered a binding contract to purchase an item at the bid price. New bidders in particular are advised to make themselves known to the sale auctioneer who will assist you with any questions about the conduct of the auction.

(B) ABSENTEE BIDDING: ART+OBJECT welcomes absentee bids once the necessary authority has been completed and lodged with ART+OBJECT. A+O will do all it can to ensure bids are lodged on your behalf but accepts no liability for failure to carry out these bids. See the Absentee bidding form in this catalogue for information on lodging absentee bids. These are accepted up to 2 hours prior to the published auction commencement.

(C) TELEPHONE BIDS: The same conditions apply to telephone bids. It is highly preferable to bid over a landline as the vagaries of cellphone connections may result in disappointment. You will be telephoned prior to your indicated lot arising in the catalogue order. If the phone is engaged or connection impossible the sale will proceed without your bidding. At times during an auction the bidding can be frenetic so you need to be sure you give clear instructions to the person executing your bids. The auctioneer will endeavour to cater to the requirements of phone bidders but cannot wait for a phone bid so your prompt participation is requested.

ABSENTEE BID FORM

This completed and signed form authorizes ART+OBJECT to bid on my behalf at the above mentioned auction for the following lots up to prices indicated below. These bids are to be executed at the lowest price levels possible.

I understand that if successful I will purchase the lot or lots at or below the prices listed on this form and the listed buyers premium for this sale (15%) and GST on the buyers premium. I warrant also that I have read and understood and agree to comply with the conditions of sale as printed in the catalogue.

Lot no.	Description	Bid max
_____	_____	_____
_____	_____	_____
_____	_____	_____
_____	_____	_____
_____	_____	_____
_____	_____	_____
_____	_____	_____
_____	_____	_____
_____	_____	_____
_____	_____	_____
_____	_____	_____
_____	_____	_____
_____	_____	_____
_____	_____	_____

PAYMENT AND DELIVERY ART+OBJECT will advise me as soon as is practical that I am the successful bidder of the lot or lots described above. I agree to pay immediately on receipt of this advice. Payment will be by cash, cheque or bank transfer: I understand that cheques will need to be cleared before goods can be uplifted or dispatched. I will arrange for collection or dispatch of my purchases. If ART+OBJECT is instructed by me to arrange for packing and dispatch of goods I agree to pay any costs incurred by ART+OBJECT. Note: ART+OBJECT requests that these arrangements are made prior to the auction date to ensure prompt delivery processing.

Please indicate as appropriate by ticking the box: PHONE BID ☐ ABSENTEE BID ☐

MR/MRS/MS: _____ SURNAME: _____

POSTAL ADDRESS: _____

STREET ADDRESS: _____

BUSINESS PHONE: _____ MOBILE: _____

FAX: _____ EMAIL: _____

Signed as agreed: _____

To register for Absentee bidding this form must be lodged with ART+OBJECT prior to the published sale time in one of three ways:

1. Fax this completed form to ART+OBJECT +64 9 354 4645
2. Email a printed, signed and scanned form to: info@artandobject.co.nz
3. Post to ART+OBJECT, PO Box 68 - 345 Newton, Auckland 1145, New Zealand

ART+OBJECT 3 Abbey Street, Newton, Auckland, New Zealand. Telephone +64 9 354 4646, Freephone 0800 80 60 01

CONTACTS



HAMISH CONEY
Managing Director
hamish@artandobject.co.nz
021 509 550



BEN PLUMBLY
Director Art
ben@artandobject.co.nz
021 222 8183



JAMES PARKINSON
Director Valuations
james@artandobject.co.nz
021 222 8184



ROSS MILLAR
Director Objects
ross@artandobject.co.nz
021 222 8185

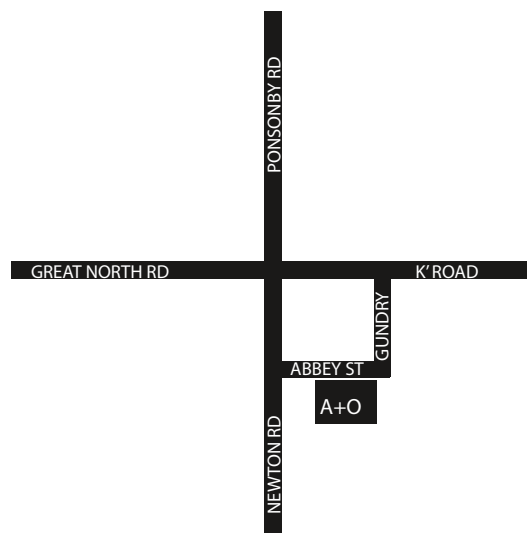


LEIGH MELVILLE
Front of House Manager
leigh@artandobject.co.nz
09 354 4646



GEORGIE CAUGHEY
Valuation Consultant
09 354 4646

THE 21ST CENTURY AUCTION HOUSE
ART + OBJECT



3 Abbey Street,
Newton
PO Box 68 345,
Newton
Auckland 1145,
New Zealand

Telephone +64 9 354 4646
Freephone 0800 80 60 01
Facsimile +64 9 354 4645
info@artandobject.co.nz
www.artandobject.co.nz

THE JOHN PERRY COLLECTION

TUESDAY 18TH AUGUST 6.30pm

NEW COLLECTORS ART

THURSDAY 20TH AUGUST 6.00pm

20TH CENTURY DESIGN

THURSDAY 20TH AUGUST 6.45pm

THE ROSS SUTTON TOY COLLECTION

SATURDAY 22ND AUGUST 2.00pm

