

# ART OBJECT

THE 21<sup>ST</sup> CENTURY  
AUCTION HOUSE





## CONTENTS

- 2 Introduction 'What do we learn from collectors?'
- 4 Important Paintings July 30 Auction Highlights
- 7 Auction Preview - This Land
- 14 Reminiscences of John Perry - Ross Millar
- 21 A rare Wallisian (Uvea) tapa acquired by John Perry in 1964
- 56 New Collectors Art, lot 409 - Memories of Rembrandt  
a mezzotint by John Drawbridge
- 65 20th Century Design
- 68 The Legacy of Garth Chester's Curvesse Chair  
- a modern homage by Gregory Smith
- 79 The Ross Sutton Toy Collection  
- FUN HO! - World Famous in New Zealand



ART  
OBJECT

THE 21<sup>ST</sup> CENTURY  
AUCTION HOUSE

## **THE JOHN PERRY COLLECTION**

TUESDAY 18<sup>TH</sup> AUGUST 6.30pm

## **NEW COLLECTORS ART**

THURSDAY 20<sup>TH</sup> AUGUST 6.00pm

## **20TH CENTURY DESIGN**

THURSDAY 20<sup>TH</sup> AUGUST 6.45pm

## **THE ROSS SUTTON TOY COLLECTION**

SATURDAY 22<sup>ND</sup> AUGUST 2.00pm

3 Abbey Street,  
Newton  
PO Box 68 345,  
Newton  
Auckland 1145,  
New Zealand

Telephone +64 9 354 4646  
Freephone 0800 80 60 01  
Facsimile +64 9 354 4645  
[info@artandobject.co.nz](mailto:info@artandobject.co.nz)  
[www.artandobject.co.nz](http://www.artandobject.co.nz)

“What do we learn from collectors and collecting? To live over other people's lives is nothing unless we live over their perceptions, live over the growth, the change, the varying intensity of the same, since it was by these things they themselves lived.”

Henry James 1903

Welcome to the ensemble performance that best describes A+O's latest catalogue. In the four offerings that you will find in these pages and on exhibition from August the 14<sup>th</sup> there really has to be something for just about everyone + the excitement of viewing two great collections assembled over a lifetime.

John Perry is perhaps New Zealand's most well known authority on Social History, Folk Art and Natural History. From his time as Director of the Bath House Museum in Rotorua to his ownership of the cornucopia that was Global Village Antiques in Helensville John's influence, eye and ability to track down the most fascinating of objects has inspired, influenced and occasionally bewildered literally thousands of collectors, visitors and the plain curious. We recommend you set aside a good day or three to view the selection from his breathtaking collection which goes to auction on August 18.

The 20<sup>th</sup> Century Design Catalogue features a splendid suite of 27 booklets of advertising illustrations by John Osborne dating from 1946. At over 100 individual illustrations the collection is a fascinating insight into the world of advertising long before the advent of the computer. The collection will be offered at auction on August 20.

The final auction of the catalogue is The Ross Sutton Toy Collection and it constitutes one of the finest toy collections ever offered at auction in New Zealand. Spanning the late 19<sup>th</sup> century to almost the present day the catalogue includes trains, die-cast, dolls, tinplate and is particularly strong in New Zealand content and specifically Fun Ho! Ross' entire collection will be offered to a new generation of collectors on Saturday the 22<sup>nd</sup> of August. Toy fans start your engines!

We feel privileged that two great collectors in John and Ross have chosen ART+OBJECT to auction their collections and assist in passing the flame to a whole new group of collectors who will keep the passion alive.

Please note: exhibition images of the catalogue will be uploaded daily online from 14<sup>th</sup> to 21<sup>st</sup> August at [www.artandobject.co.nz](http://www.artandobject.co.nz), hit NEWS on navigation bar





# Live a little, a lot.



The first ever IS convertible is ready to play.

Meet the new Lexus IS250 convertible - luxury with a mischievous side. Hit the road in a hard top and switch to convertible in just 20 seconds. The premium audio and air conditioning work just as well with the roof down and whether you're skipping town or going shopping, multiple airbags and a clever Vehicle Dynamics Integrated Management system will keep you out of trouble. So go on, live a little and test drive the brand new IS250 convertible today.



[www.lexus.co.nz](http://www.lexus.co.nz)

# highlights from the important paintings auction

JULY 30TH 2009



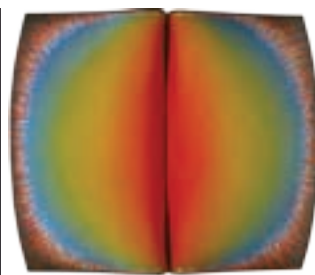
LEO BENSEMANN  
Portrait of Sydney Lough-Thompson  
\$19 390



SHANE COTTON  
Wake  
\$205 000

JULIAN DASHPER  
Tolaga Bay at Fergusson Wharf  
\$11 406

YUK KING TAN  
Pohutukawa  
\$4448



MILAN MRKUSICH  
Meta Grey, Red  
\$47 500\*

TED BULLMORE  
Astroform (Bliss)  
\$19 390



JUDE RAE  
Nexus II  
\$35 358

JOHN PULE  
Nofotatu Moru Tukulagi  
\$51 328

PETER ROBINSON  
Us and Them  
\$20 530

RICHARD KILLEEN  
Know This Place  
\$42 203

TERRY STRINGER  
The Source  
\$23 953



all prices include buyers premium unless indicated





through the looking glass...



# New

EXHIBITIONS + EVENTS + CAFE + SHOP

THE NEW DOWSE

45 Laings Rd, Lower Hutt + [www.newdowse.org.nz](http://www.newdowse.org.nz)





THIS

LAND:

AN UNPRECEDENTED ARCHIVE COLLECTION OF  
SIXTY WORKS BY RALPH HOTERE, *NEVER BEFORE*  
*SIGHTED BY THE NEW ZEALAND PUBLIC.*

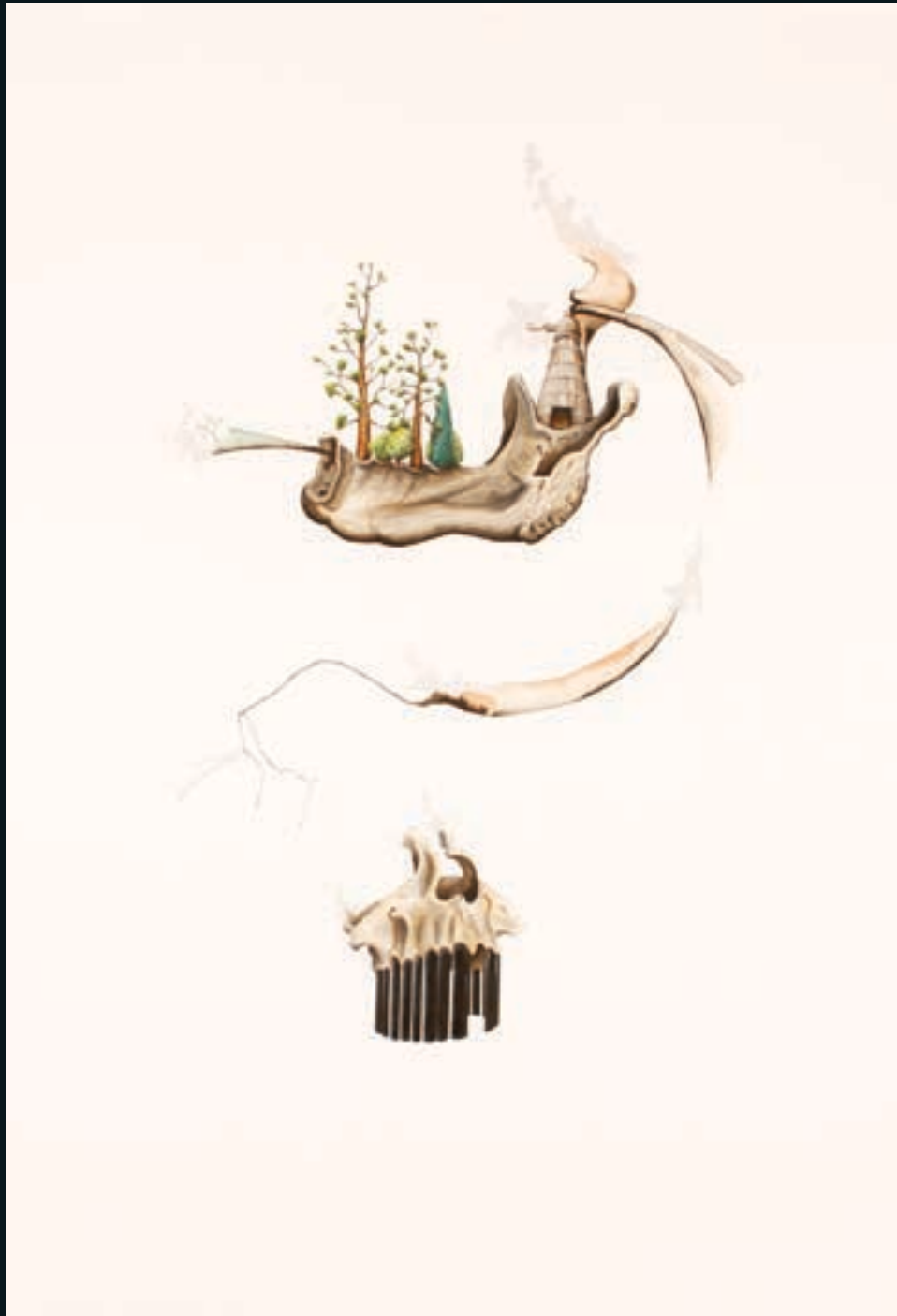
6:30 PM

SEP 24



# contemporary art

OCTOBER 2009



Simon Esling  
*The Nursery*  
Ink and watercolour on paper  
2007  
1050 x 760mm  
\$2500 - \$4000

Entries invited for this auction Contact Ben Plumbly ph 09 354 4646 021 222 8183 or [ben@artandobject.co.nz](mailto:ben@artandobject.co.nz)





Martin Poppelwell  
*OOPS*  
Glazed ceramic  
410 x 320mm  
\$750 - \$1100

+ objects  
OCTOBER 2009

Entries invited for this auction Contact Ross Millar ph 09 354 4646 021 222 8185 or [ross@artandobject.co.nz](mailto:ross@artandobject.co.nz)



# important paintings + sculpture

NOVEMBER 27 2009



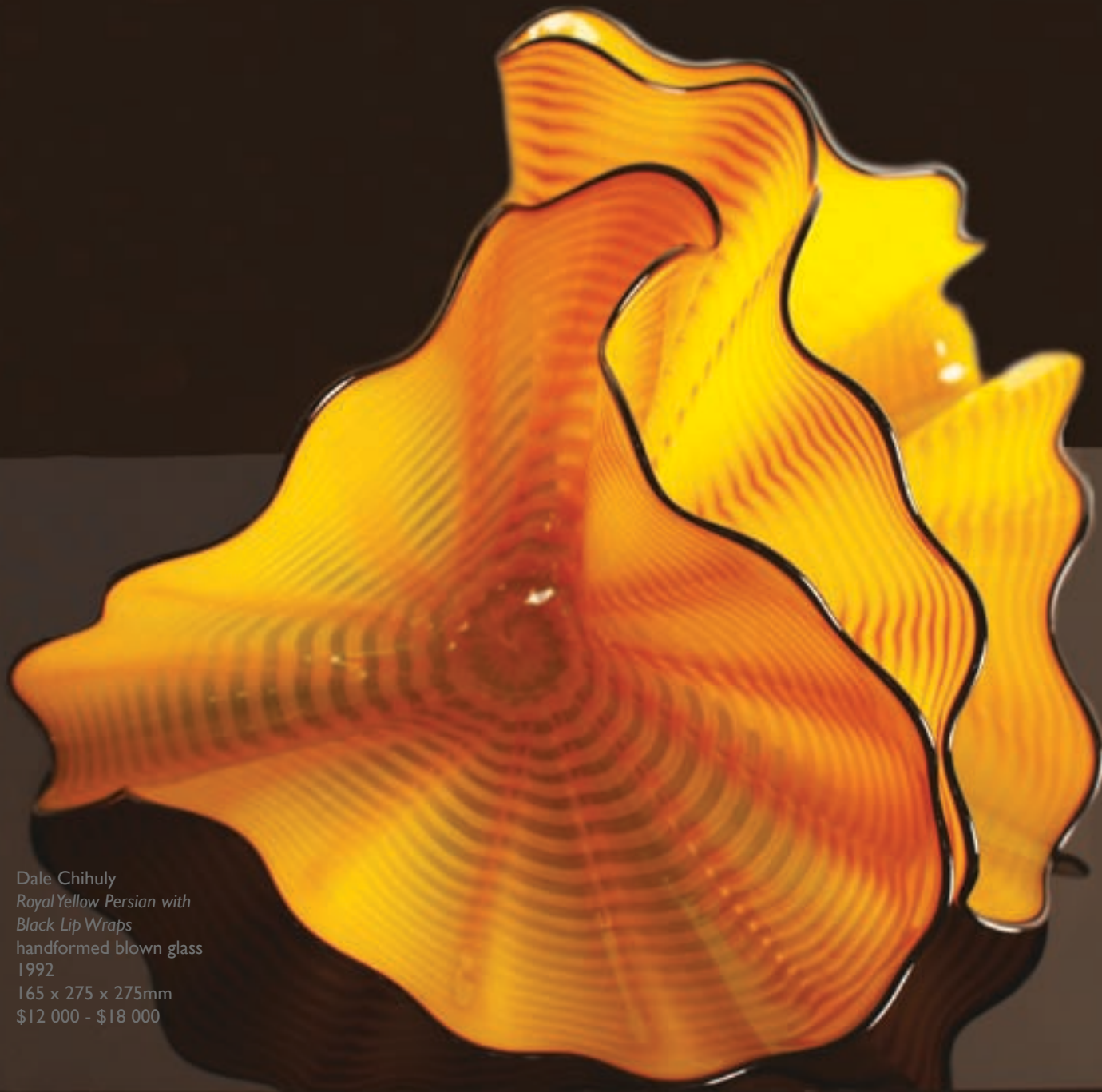
Shane Cotton *Hopa* oil on canvas, 1998, 1857 x 1550mm \$130 000 - \$170 000

Entries invited for this auction Contact Ben Plumbly ph 09 354 4646 021 222 8183 or [ben@artandobject.co.nz](mailto:ben@artandobject.co.nz)



# objects of desire • DECEMBER 2009

A+O is pleased to announce a new sale category focusing on the unique, esoteric, rare and desirable from all periods. Limited to just one hundred items this catalogue will be a tribute to the singular artistic visions in the decorative arts



Dale Chihuly  
*Royal Yellow Persian with  
Black Lip Wraps*  
handformed blown glass  
1992  
165 x 275 x 275mm  
\$12 000 - \$18 000

Entries invited for this auction Contact Ross Millar ph 09 354 4646 021 222 8185 or [ross@artandobject.co.nz](mailto:ross@artandobject.co.nz)



# Reminiscences of John Perry (Te Toto Weka)

If one could capture elements of luck, privilege and joy in a mirror the reflection would be John Perry's psyche. A man who has counted amongst his friends and acquaintances some of the country's most influential artists, who himself represented NZ at the Paris Biennale, who holds fast against the grey flannel suits of the establishments, who never regretted a day in his life!

Artist and teacher, Collector, Gallery and Museum Director, Dealer, Author and Commentator, the multi-faceted John Perry entered my life when I worked at Dunbar Sloane's in Wellington. How vivid was this character who in the early 80s represented the Rotorua Art Gallery as director coming to auction to buy art works on a shoe string budget, but with a passion that was infectious?

During his 20 years at 'The Bathhouse' he built up not only an important collection of historical and contemporary New Zealand art but curated and co-curated a number of significant exhibitions, including 'King Country Journey', 'Feathers and Fibre', 'Rata and Colin Lovell-Smith', Trevor Lloyd', 'Theo Schoon' and 'Elvis in Geyserland' to name a few. From Rotorua he returned to Helensville where for the last decade he has developed his business at the old Regent Cinema, a building filled with man-made and natural curiosities. He lovingly refers to it as "The Theatre of the Absurd", "The Theatre of the Unexpected" or the Art House Cinema", take your pick.

I'm dipping into a book that my father just lent me, "Mr Explorer Douglas" about Charlie Douglas, the famous surveyor of South Westland, one of whose journal writings is about the weka or wood hen. Oh how the weka reminds me of John Perry: inquisitive, sharp beaked, endlessly curious, tamable but fearless and perhaps a little stringy.

What brings John to sell some of his multitudinous museological collection? A stumbling towards retirement, no! Rather a recognition of the need for a retreading of the wheel of life. The potential of relocation to the far south looms. The passion that John holds means that his collecting will never stop – it's in the blood (te toto weka). But this current incarnation enables us, other collectors, to enrich our lives and environments with treasures selected from the bower of the weka's gatherings

Ross Millar  
August 2009



# The John Perry Collection

## – A Cabinet of Curiosities

### Man Made and Natural

TUESDAY 18<sup>TH</sup> AUGUST 6.30PM

3 Abbey Street, Newton, Auckland

#### VIEWING:

Opening Event

Friday	14 August	6.00pm – 8.30pm
Friday	14 August	10.00am – 5.00pm
Saturday	15 August	11.00am – 4.00pm
Sunday	16 August	11.00am – 4.00pm
Monday	17 August	11.00am – 4.00pm
Tuesday	18 August	9.00am – 2.00pm

Note: Exhibition images will be uploaded on a regular basis at [www.artandobject.co.nz](http://www.artandobject.co.nz) hit NEWS on navigation bar - please check daily from the 14<sup>th</sup> to the 18<sup>th</sup> of August



**NATURAL HISTORY**

**1** A collection of teeth and claws from a miscellany of creatures including a sperm whale, wild pigs, etc.  
**\$300- \$400**

**2** Two mako shark jaws, with full sets of teeth. Plus a collection of nine shark's teeth and one fossil shark's tooth (12)  
**\$150 - \$250**

**3** A sperm whale jaw bone (in two pieces) complete with 27 teeth, 21 in good condition and six with some faults. This jaw bone was collected following a stranding of sperm whales in 1974 in the Kaipara Harbour (dated photos available)  
**\$1500 - \$3000**

**4** A collection of variously sized clam shells (tridacna gigas, etc)  
**\$100 - \$200**

**5** A collection of moa (Dinornis novaezealandiae) bones recovered from a cave in the Nelson area, c.1950s. (25 pieces)  
**\$200 - \$350**

**6** A collection of moa gizzard stones, probably from the Nelson mineral belt (54 approx)  
**\$125 - \$225**

**7** A collection of sub fossil flax snail shells (Placostylus hongii) [pupuharakeke] collected in the far north (Tom Bowling Bay, Cape Maria Van Dieman, etc.) These shells were used as musical instruments by Maori  
**\$100 - \$200**

**8** A sawfish bill with 44 teeth. L.605mm. Along with a swordfish bill, mounted on an oak shield. L.580mm  
**\$100 - \$200**

**9** A fallow deer head, taxidermy and mounted, with label 'Waikato, 1901.  
**\$300 - \$500**

**10** A fallow deer head, taxidermy and mounted.  
**\$300 - \$500**

**TAONGA MAORI, STONE**

**11** A very good small mahi (sinker stone), ovoid shape with suspension lug drilled with hourglass hole. The lug worked with ridges similar to the butt knob on a patu onewa. Y13045, L.70mm  
**\$450 - \$650**

**12** Pecked greywacke stone sinker of ovoid form with lashing scarf around the longest circumference Y13046. L.105mm  
**\$150 - \$250**

**13** Patu muka with all over pecked finish. Y13048, L.220mm  
**\$225 - \$350**

**14** Patu muka, with pecked finish and areas of original rind to surface. Y13049, L.220mm  
**\$225 - \$350**

**15** Four various argillite/basalt toki of quadrangular section. Y09205, 07, 08, 09  
**\$200 - \$300**

**16** A fine argillite 'hog back' toki with pecked and flaked poll. (Repaired). L.190mm. Y08003. Along with two others Y08004 and 05.  
**\$150 - \$250**

**17** Quadrangular section adze blade with reduced pecked poll. Y13030. L.140mm  
**\$150 - \$225**

**18** Quadrangular section adze blade. Y13208. L.190mm  
**\$175 - \$250**

**19** Pair of small quadrangular adze blades. Y13060, 57. L.88mm and 85mm.  
**\$200 - \$300**

**20** Large quadrangular section adze blade. Y13031. L.150mm  
**\$100 - \$200**

**21** Large quadrangular section adze blade. Y13026. L.235mm  
**\$150 - \$250**

**22** Two adze blades  
One inscribed: Found Dudders Beach, Clevedon, 1881. Y13052. L.105mm  
One inscribed Clevedon, 1881. Y10374. L.60mm  
**\$125 - \$175**

**23** Two adze blades  
One inscribed: Piu Piu. 1921. Y13029. L.150mm;  
One inscribed: Manukau Heads. Y13036. L.125mm  
**\$175 - \$225**

**24** Two adze blades  
One inscribed: Found on my property Parau 3-3-81 GAY13034. L.140mm  
The other: Y13027. L.155mm  
**\$150 - \$250**

**25** Three adze blades  
Y13032, L.115mm; Y13033, L.120mm;  
Y13042, L.120mm (indistinct inscription)  
**\$100 - \$200**

**26** Three quadrangular section adze blades  
Y13056, L.118mm; Y13038, L.105mm;  
Y13054, L.130mm (remains of inscription: 'Northland')  
**\$100 - \$200**

**27** Three adze blades  
Y13061, L.86mm; Y13055, L.104mm;  
Y13035, L.90mm  
**\$100 - \$200**

**28** Four adze fragments  
Y13068, L.60mm; Y13041, L.90mm;  
Y13066, L.82mm; Y13075, L.100mm  
**\$100 - \$200**

**29** A small quadrangular section argillite blade and three blade fragments  
Y13037, L.75mm (old paper label affixed: Matapouri 1970); Y13053, L.80mm; Y13051, L.60mm; Y13063, L.80mm  
**\$150 - \$250**

**30** Six argillite worked stone pieces (adze fragments and preforms)  
Y12989, L.95mm; Y12994, L.125mm;  
Y12996, L.110mm; Y12992, L.100mm;  
Y12991, L.100mm; Y12990, L.85mm  
**\$80 - \$200**

**31** Six argillite worked stone pieces (adze fragments and preforms)  
Y12995, L.85mm; Y12984, L.77mm;  
Y12999, L.60mm; Y12998, L.90mm;  
Y12988, L.60mm; Y12975, L.60mm  
**\$60 - \$120**

**32** Four worked stone pieces (preform adze workings)  
Y12986, L.180mm; Y12985, L.165mm;  
Y12993, L.100mm; Y12987, L.90mm  
**\$80 - \$160**

**33** Four various argillite/basalt toki of quadrangular section. Y09205, 07, 08, 09  
**\$200 - \$300**

**IMAGES OF MAORI, LATE 18<sup>th</sup> and EARLY 19<sup>th</sup> CENTURY**

**34**  
After Sydney Parkinson  
*Specimens of the Ingenuity of the New Zealanders displayed in carving their chests without the use of iron instruments.*  
original copperplate engraving, 1769  
230 x 185mm  
**\$175 - \$225**

**35** After Sydney Parkinson  
[An assemblage of artifacts collected on Captain Cook's first voyage]  
original copperplate engraving, 1769  
215 x 365mm  
**\$200 - \$300**

**36** After Sydney Parkinson  
*Representation of a War Canoe of New Zealand with a View of Gable End Foreland.*  
original copperplate engraving, 1769  
230 x 370mm  
**\$200 - \$300**



1



11



14



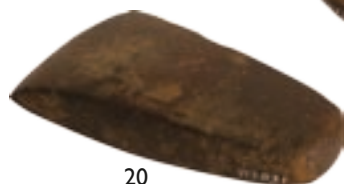
18



19



21



20



22



23



28



26



34



35



36



3



**37** Louis de Sainson  
*Neu Seeland (Tasman Bay)*  
*Neu Seeland*  
Two original hand coloured lithographs depicting portraits of five Maori.  
German publication after D'Urville's Voyage Atlas c. 1835. 310 x 210mm  
**\$250 – \$350**

**38** After Louis de Sainson  
*Chefs Von New Zealand*  
Portraits of Natai and Rngui  
lithograph after plates 63 and 71 from D'Urville's Voyage Atlas, c. 1835  
200 x 350mm  
**\$300 – \$400**

**39** Louis de Sainson  
*Village A L'Anse De L'Astrolabe*  
Hand Coloured Lithograph  
Atlas plate 38 from D'Urville's Voyage 1826-29. 220 x 380mm  
**\$250 – \$350**

**40** Louis de Sainson  
*Vue Interieure Du Pa Des Iles*  
Hand Coloured Lithograph  
Atlas plate 52 from D'Urville's Voyage 1826-29. 185 x 280mm  
**\$125 – \$225**

**41** Louis de Sainson  
*Vue Prise A La Baie Des Iles*  
Hand Coloured Lithograph  
Atlas plate 62 from D'Urville's Voyage 1826-29. 220 x 380mm  
**\$125 – \$225**

**42** Unknown artist  
*Insulaire De la Nouvelle Zeélande*  
Hand Coloured Engraving  
180 x 115mm  
**\$90 – \$140**

**43** Louis de Sainson  
*Homme – Race Mongolique*  
Hand Coloured Engravings after D'Urville's Atlas. 245 x 150mm  
**\$100 – \$150**

## TAONGA MAORI, FIBRE

**44** A small flax kete containing an assemblage of stone pieces: adzes, adze portions, drill points, file stones, obsidian flakes, some with affixed location labels (Cape Maria Van Dieman). Four pieces registered: Sinkers Y13047, L.52mm; file stone Y13040, L.78; file stone Y13059, L.78mm; adze blade Y13062, L.108mm.  
**\$100 – \$200**

**45** 19<sup>th</sup> century kete whakiro of harakeke and kiekie. Faded dyed geometric design to faces. Y12954, 185 x 280mm  
**\$50 – \$100**

**46** Late 19<sup>th</sup> century small kete whakapuareare, of decorative open weave harakeke body. Y12951, 135 x 155mm  
**\$100 – \$200**

**47** Pair of small old kete whakiro, each with single plied handle. Faded purple dyed takitaki design. Y12955, 70 x 100mm; Y12956, 70 x 95mm  
**\$75 – \$125**

**48** A fine old kete muka, natural undyed colour; fringed to three sides, the body with four decoratively worked rows. Y12957, 190 x 235mm  
**\$400 – \$600**

**49** Late 19<sup>th</sup>/early 20<sup>th</sup> century kete whakapuareare, natural undyed harakeke, with two triple plait handles, the body with decoratively open patterned weave in three bands. Y12889, 180 x 285mm  
**\$250 – \$350**

**50** Rare and unusual early 20<sup>th</sup> century small kete muka of squat circular form, the body of coiled triple plait basket type construction with muka triple plait handle and generous muka fringe to the mouth. Y12966, D.77mm  
**\$200 – \$400**

**51** Two kete whakapuareare  
Large open diamond patterns in a field of takitahi, Y12964, 250 x 375mm  
Trellis of diamond pattern Y12965, 270 x 378mm  
**\$200 – \$300**

**52** Late 19<sup>th</sup>/early 20<sup>th</sup> century kete muka, with colourful dyed and natural mawhitiwhiti (criss-cross) and taniko patterns to the body, framed by fringing to three sides and with two plied handles. Y12958, 197 x 225mm  
**\$450 – \$650**

**53** A collection of three small kete, all takitahi design with serrated openings. Y12963, 120 x 170mm; Y12962, 170 x 185mm; Y12961, 145 x 225mm  
**\$150 – \$300**

**54** Kete muka with three fringed sides, natural undyed, with two ply muka handles. Early 20<sup>th</sup> century. Y12959, 205 x 250mm  
**\$400 – \$600**

**55** Kete Whakiro, hai taimana (ace of diamonds) patterned in dyed and natural harakeke. Three ply muka handle Y12888, 195 x 415mm  
**\$400 – \$700**

**56** Two kete whakiro, takitahi design with pattern in purple and green dyes, two ply muka handles. Y12953, 120 x 140mm; Y12952, 190 x 265mm.  
**\$225 – \$325**

**57** Two kete whakiro  
Ruaruawhetu pattern, handles missing, early 20<sup>th</sup> century. Y12886, 280 x 400mm.  
Poutama (stairway to heaven) pattern. 19<sup>th</sup> century. Y12887, 265 x 390mm  
**\$150 – \$300**

**58** A rare muka sash, with alternating natural undyed and kanono (*Coprosma grandifolia*) dyed sections, finely worked band with long fringing. Y12960, 410 x 860mm.  
**\$300 – \$600**

**59** A small raupo (bullrush) kete of open oval basket form. Y12967, 120 x 130mm  
**\$50 – \$100**

**60** A mid-brown wood weaving peg with discoid terminal knob. Y registered. L.570mm  
**\$150 – \$300**

**61** Three vintage raupo poi, one oval, Y12876, L.297mm.  
Spherical, raupo, Y12881, D.60mm.  
Spherical, raupo, Y12880, D.60mm.  
**\$40 – \$80**

**62** Pair of vintage poi, raupo with overlaid dyed muka Y12877, ex Rotorua region. Along with a vintage copy of Wiata Poi. Poi were often gifted to concert party visitors.  
**\$50 – \$100**

**63** Two vintage poi, raupo overlaid with raffia and dyed muka fringing, both with tassels to cord ends. Y12878, D.70mm and Y12879, D.80mm.  
**\$50 – \$100**

**64** A group of miniature poi of raupo, raffia and harakeke designed to be worn as brooches. Y12882. Along with a miniature pingao kete and raupo and pingao poi with dyed muka tassel. Y12885  
**\$20 – \$30**

**65** Group of seven vintage muka tassels, comprising bunches of four and three. Y12884  
**\$30 – \$50**

**66** Fine, decoratively woven wall pocket, c. 1905. With associated label inscribed: Farewell gift for Maaki Bone from Meri Tiako & Julia Manihera. Y09675  
**\$200 – \$400**

**67** Whariki (woven mat) in the manner of Ruhia October (nee Reihana) [b. 1914, Arawa/Tuwaharetoa]. Of kiekie and pingao leaf. Early 20<sup>th</sup> century. Featuring a miscellany of raranga patterns. Ref: Mick Pendergrast, Feathers and Fibre. Y registered. 2700 x 1560mm  
**\$1000 – \$2000**



37



39



43



38



46



47



48



52



53



54



49



50



51



51

57



58



44



59



61



65



63



67



**68** Small whariki (sampler) containing a number of different designs.Y registered. 900 x 800mm  
**\$250 - \$500**

**69** A transitional period Maori cloak, with twin ply muka ground and dyed thrums. Edge and lower hems with woolen loop decoration in gold, green and black.Y10665. 760 x 1080mm  
**\$400 - \$600**

## IMAGES OF MAORI, EARLY 19<sup>th</sup> CENTURY

**70** George French Angas 1822 – 1886  
*Poahu and E kotī, Two lads of Poverty Bay, Children of Te Pakaru*  
Lithograph 1847  
New Zealanders Illustrated Plate 33  
245 x 410mm  
**\$200 - \$400**

**71** George French Angas 1822 – 1886  
*Te Ohu, a Heathen Priest of the Ngatimaniapoto Tribe*  
Lithograph 1847  
New Zealanders Illustrated Plate 41  
245 x 400mm  
**\$200 - \$400**

**72** George French Angas 1822 – 1886  
*Ko Tauwaki, a Chief of Tukanu, Ko Teonionga, a boy of Te Rapa*  
Lithograph 1847  
New Zealanders Illustrated Plate 39  
245 x 400mm  
**\$200 - \$400**

**73** George French Angas 1822 – 1886  
*Ornamental Canoe heads and Paddles*  
Hand Coloured Lithograph 1847  
New Zealanders Illustrated Plate 42  
430 x 290mm  
**\$200 - \$400**

**74** George French Angas 1822 – 1886  
*Women of the Ngati Toa Tribe, Cook's Straits*  
Hand Coloured Lithograph 1847  
New Zealanders Illustrated  
**\$200 - \$400**

**75** George French Angas 1822 – 1886  
*E Pori, E Rangi Wawa, Porirua Pah*  
Lithograph  
New Zealanders Illustrated Plate 20  
370 x 290mm  
**\$200 - \$400**

**76** George French Angas 1822 – 1886  
*Ngeungeu and Her Son James Maxwell*  
Hand Coloured Lithograph 1847  
New Zealanders Illustrated Plate 3  
350 x 275mm  
**\$200 - \$400**

## TAONGA MAORI, POUNAMU and KINAKINAKITANGA

**77** A Pounamu tokipoutangata adze blade of slender form and partial trapezoidal section. L.185mm.Y8901  
**\$150 - \$250**

**78** Small Pounamu toki, quadrangular section with lapidary scarf to one side. Dark green kawakawa variety stone. L.65mm.Y09335. Ex K A Webster Coll  
**\$100 - \$200**

**79** Small Pounamu toki of auhaunga variety stone. L.60mm.Y09336. Ex K A Webster Coll.  
**\$100 - \$200**

**80** A small quadrangular piece of worked pounamu with lapidary scarf to one face. Kawakawa variety.Y13058, L.118mm  
**\$200 - \$400**

**81** A small bowenite hei tiki. Modeled with head to left shoulder, sealing wax inlaid eyes, hands to thighs. H.65mm. Affixed muka cordage. Along with a bird bone toggle  
**\$400 - \$600**

**82** A dog's tooth pendant with original suspension hole worn out and redrilled.Y9080. Along with a 'tooth' pendant shaped from a piece of shell. Y9079  
**\$100 - \$200**

**83** A small quadrangular piece of tangiwai (Bowenite) with hourglass suspension hole and deep lapidary scarf to one face (with imminent making of two pendants or gouges) Y.13044, L.82mm  
**\$250 - \$500**

**84** Pounamu Kaka Poirā (parrot ring) Y registered.  
**\$400 - \$500**

**85** Small pounamu kuru pendant.Y registered  
**\$100 - \$200**

**86** A 19th century shark's tooth ear pendant with old red sealing wax to the roots.Yregistered  
**\$300 - \$400**

**87** An old shark's tooth earring with gold suspension rings.Y registered  
**\$100 - \$200**

**88** Three framed and mounted amokura feathers  
Ex the collection of the late Malcolm Harrison (fabric artist).  
The amokura feathers were traditionally worn by high ranking chiefs of Polynesia and were regarded as sacred.The feathers of the Amokura were highly regarded by Maori because of their links with thier tropical past and thier raity here  
**\$300 - \$400**

## IMAGES OF MAORI, LATE 19<sup>th</sup> CENTURY

**89** Charles Decimus Barraud  
*Some Sketches of Maori Life*  
Lithograph from New Zealand, Graphic and Descriptive, 1877.  
Ref: Ellis, Early Prints of New Zealand #925, illust. pg 213  
**\$175 - \$325**

**90** Tawhiao, the Maori King, 1887  
black and white engraving with his 'signature'. from 'The Picturesque Atlas of Australasia'  
285 x 210mm  
**\$100 - \$200**

**91** American Photographic Company (John McGarrigle)  
Six Maori portraits  
original contact prints from the National Museum Coll, 1978  
110 x 83mm each  
**\$300 - \$600**

**92** American Photographic Company (John McGarrigle)  
Six Maori portraits  
original contact prints from the National Museum Coll, 1978  
110 x 83mm each  
**\$300 - \$600**

**93** American Photographic Company (John McGarrigle)  
later re-issued by Burton  
three contact prints from the original glass plate negatives in the National Museum.  
Stamp on verso  
**\$100 - \$200**

**94** C M Phillips  
The Whip Throw Spear c. 1905  
photograph from the original negative in Auckland Institute and Museum  
Ref :William Main 'Maori in Focus' Millwood Press pg. 80  
240 x 290mm  
**\$150 - 200**

**95** Samuel,Carnell, Napier  
six photographic images from the original glass plates in the collection of the National Museum. 1970s  
Ref :William Main, Maori in Focus, p.47  
**\$300 - \$600**

**96** Alfred Burton  
eight contact prints from 'king Country Journey'. from the original glass plates in the collection of the National Museum. 1970s  
Ref :William Main, Maori in Focus, p.51, 55.  
**\$300 - \$600**

**97** Alfred Burton  
*Wahanui at his house, Alexandra, (Pirongia)*  
*Wetere Te Rerenga Great Mokau Chief*  
two original 19th century contact prints  
195 x 147mm each  
**\$400 - \$600**



70



71



73



74



75



76



81



78



77



79



89



85



80



84



83



87



86



90



## TAONGA MAORI, WOOD

**98** Swamp recovery ko recovered from Lake Mangakaware, Waikato. Of extraordinary length reducing in diameter at the terminal end finished with a flared knob.Y07661. L3080mm  
**\$250 - \$500**

**99** Swamp recovery ko with reduced diameter at terminal end and finished with an oval knob. L2430mm.Y08321  
**\$200 - \$400**

**100** Swamp recovery ko, recovered from lake Mangakaware, Waikato. With slight terminal butt knob.Y08023. L.1335mm  
**\$150 - \$250**

**101** Dense grey-brown wood patu aruhe (fern foot pounder) of torpedo shape. L.325mm.Y819  
**\$150 - \$200**

**102** Grey-brown wood patu aruhe of slender torpedo shape. L.390mm. Y09000  
**\$150 - \$200**

**103** A dense brown wood patu aruhe of tapering shape with reduced grip. L.280mm.Y08952  
**\$150 - \$200**

**104** Carved late 19th century tokotoko, with four ancestor figures and lizard (taniwha) to the shaft and a bird's head handle.Y registered. L.960mm  
**\$500 - \$1000**

**105** A Ngati Tarawhai carved palisade post carved for the Model Pa, Whakarewarewa, recovered from Lake Rotorua.Yregistered. H.1820mm, 230mm x 230mm  
**\$2000 - \$4000**

**106** Two carved epa from a model pataka. Rotorua school, early 20<sup>th</sup> century. Ochre red painted, paua shell inlaid eyes to carved figures. Indistinct ink inscriptions verso, possibly a whakapapa.Y2926 and 27. 600 x 590mm  
**\$1200 - \$1800**

**107** A large and important carving from an unconstructed meeting house in the Waikato region. Y registered circa 1912. 2880 x 345 x 50mm  
**\$5000 - \$10000**

**107A** A hoe (paddle) with elongated blade, a simple terminal knob to the shaft end.Y3868. L.1600mm  
**\$800 - \$1200**

## OCEANIC ART, 19<sup>th</sup> and 20<sup>th</sup> CENTURY, POLYNESIA

**108** 20<sup>th</sup> Century Samoan tapa cloth patterned with hand painted geometric designs 1650 x 1600mm  
**\$200 - \$300**

**109** An old Samoan tapa, decorated in 20 panels with cruciform and star motifs painted over kupesi worked leaf designs. 1170 x 1420mm  
**\$400 - 600**

**110** An old Samoan tapa decorated in 48 panels with cruciform and diamond motifs painted over kupesi worked designs. Many repairs to old wear. 1650 x 2620mm  
**\$800 - \$1200**

**111** An old Samoan tapa decorated in 64 panels with leaf rib/vein patterns painted over kupesi tablet designs. Fringed edge, much old wear. 1750 x 1450mm  
**\$700 - \$1000**

**112** *Siapo* (tapa bark cloth), Wallis Islands decorated with repeat pattern squared panels enclosing diagonally positioned lanceolate form along with variously sized rectangular or square blocks and circular motifs. Painted quasi-arabic numerals denote the 11 lananga sections. Provenance: The M.E. Reizenstein Collection, purchased John Cordy's Auction House 1964. Reizenstein was a member of the Royal Society of New Zealand and wrote in the Polynesian Journal in the 1960s. 4300 x 2400mm approx  
**\$5 000 - \$7 000**



108



101



102



103



106

107A

98

99

100



112



107



109



110



111



105



**113** Two Samoan dance wands in the form of tomahawks, one with 'shark's tooth' notching  
Early 20<sup>th</sup> Century  
**\$500 – \$800**

**114** Pair of Nuie Island (the Lonely Island) dance wands with original sennit binding. Lanceolate shaped blades, some losses to one edge. Each approx L.1300mm. Along with a two early 20<sup>th</sup> century Nuie Island fans  
**\$300 – \$600**

**115** *I ula drisia* (ball headed throwing club) Fiji, 19<sup>th</sup> century, with carved 'shark tooth' notched decoration to handle  
**\$200 – \$300**

**116** Late 19<sup>th</sup>/early 20<sup>th</sup> Century wooden slit drum, remains of old exhibition label affixed w. 280mm  
**\$100 – \$200**

**117** *Fue* (high chief's whisk), Samoa, early 20<sup>th</sup> century. The wooden shaft with large disk finial. The whisk of plaited, light coloured horse hair. Ref Te Rangi Hiroa, *Samoa Material Culture*, pg.632  
Fly whisks are of two forms; those used by high chiefs, and those by talking chiefs. Formerly the high chief's whisk consisted of a few short lengths of sennit braid lashed to a long handle but it has lately become the custom to use the hair from a white horse's tail and to regard that as the exclusive type for a high chief  
**\$300 – \$600**

**118** *Fue* (talking chiefs fly whisk), Samoa, early 20<sup>th</sup> century. Hardwood handle and coconut sennit,  
**\$200 – \$400**

**119** Society Islands stone poi pounder with transverse bar handle (used for mashing bread fruit for fermenting. H.140mm. Along with another smaller pounder  
**\$200 – \$350**

**120** *Pu tona* (trumpet) Marquesas Islands, 19<sup>th</sup> century. A large triton shell trumpet with old suspension holes, lacking original suspension cordage  
**\$200 – \$300**

**121** *Sedrenwaiwai* (priests oil dish) Fiji. Dark hardwood (vesi) shaped bowl with short legs underneath and a bifurcated handle issuing from and integral to the underside. L. 370mm  
**\$300 – \$500**

**122** A collection of ten Polynesian fans, some with hardwood handles  
Early-mid 20<sup>th</sup> Century  
**\$100 – \$200**

**123** Samoan chiefs talking stick c.1920 of natural striated vine with branch nodules  
**\$200 – \$300**

**124** 19<sup>th</sup> Century whalebone walking stick with inlaid rectangles and diamonds of black lip mother of pearl to the faceted grip area. L.767mm  
**\$700 – \$1000**

**125** Unidentified Photographer  
Samoa Marketplace, c.1910  
original sepia photograph  
135 x 190mm  
Along with another  
**\$90 – 130**

**126** John Webber  
Portrait of a Man of the Sandwich Islands with His Helmet  
A Young Woman of the Sandwich Islands  
original copperplate engraving, 1777  
230 x 330mm  
**\$200 – \$400**

**127** John Webber  
An Accurate representation of a canoe of the Sandwich Islands, The rowers being masked.  
original copperplate engraving, 1777  
230 x 360mm  
**\$200 – \$400**

**128** John Webber  
A Portrait of a Man of the Sandwich Islands in a Mask.  
A representation of a man of the Sandwich Islands dancing.  
original copperplate engraving, 1777  
210 x 330mm  
**\$200 – \$400**

**129** Aloï Pilioko  
(The Picasso of the Pacific)  
b. 1935, Wallis Islands  
Fish Woman, 1981  
mixed media on tapa  
500 x 530mm  
**\$500 – \$700**

**130** Fatu Feu'u  
Orongo  
silkscreen print on tapa, 1/10  
signed, titled, dated 1992  
410 x 350mm  
**\$800 – \$1000**

## OCEANIC ART, 19<sup>th</sup> and 20<sup>th</sup> CENTURY, MELANESIA

**131** Unknown Photographer  
Outside a Solomon Islands House  
original sepia photograph, c.1900  
entitled verso. 140 x 190mm  
Along with another dated 1898 verso  
**\$110 – \$200**

**132** Melanesian hardwood club of paddle form, the blade with a raised medial rib. L. 1260mm  
**\$200 – \$300**

**133** Collection of five finely carved Trobriand Island food bowls, c. mid 20<sup>th</sup> Century  
**\$100 – \$200**

**134** Heavy hardwood club, possibly of Pacific or African origin, along with a long-handle club of coconut wood  
**\$150 – \$250**

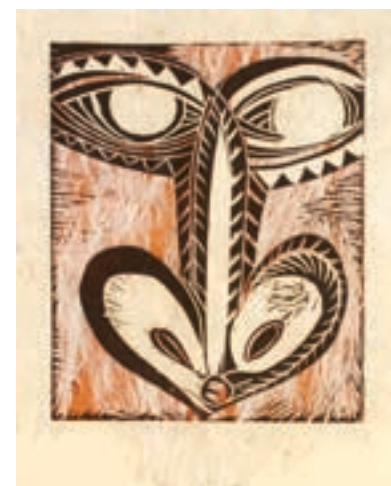
**135** *Kapkap* (pectoral ornament)  
Santa Cruz, 19<sup>th</sup> century. Tridacna (giant clam) shell disc with turtle shell fretwork overlay, possibly representative of a soaring frigate bird.  
D.95mm  
**\$450 – \$750**

**136** *Kapkap* (pectoral ornament) Santa Cruz, 19<sup>th</sup> century. Similar to above.  
D.108mm  
**\$450 – \$750**

**137** Three Kundu (finger and hand drums), Papua New Guinea, with original reptile membranes  
**\$150 – \$300**



129



130



135



136



123



124



126



127



128



**I38** A Votive Portrait Mask, Papua New Guinea, over-modelled turtle/carapace bone with resin and cowrie shells affixed  
**\$100 – \$200**

**I39** A collection of six engraved bamboo combs, mid-20th century, Papua New Guinea, with finials with decoratively incised designs  
**\$200 – \$300**

**I40** A fine and rare Solomon Islands turtle shell spoon, engraved on both sides with frigate bird motifs  
Late 19<sup>th</sup>/early 20<sup>th</sup> century  
**\$500 – \$1000**

**I41** Four carved wooden food bowls, Solomon Islands, early 20<sup>th</sup> Century. One with frigatebird finials and old affixed Museum label, two with double handles, another of bird form with inlaid nautilus shell eyes.  
**\$300 – \$500**

**I42** Three finely woven baskets, Melanesian, (possibly Vanuatu) one with original label inscribed 'Bag in which men carry their tobacco, betel nut etc.'  
**\$125 – \$300**

**I43** Large hand painted tapa cloth Papua New Guinea, 930 x 1950mm approx  
**\$300 – \$600**

**I44** Two Solomon Islands hardwood combs with 11 and 16 tines. Engraved with traditional designs across the head, highlighted with pigment  
**\$130 – \$200**

**I45** Two fine Melanesian hair combs with 9 and 11 tines, bamboo and fibre  
**\$150 – \$300**

**I46** *Tafuliae* (shell money) Solomon Islands, hand-worked 'Bride Price'. This piece has been de-accessioned from NZ Government House.  
**\$250 – \$500**

**I47** A pair of Papua New Guinean double ended engraved bamboo combs  
**\$50 – 100**

**I48** Three Melanesian hardwood spears with variously carved designs. Tallest L.2750mm  
**\$150 – \$300**

**I49** A tray lot with a collection of combs from various countries of origin  
**\$300 – \$400**

**I50** A collection of five finely woven clutch bags and purses of Indonesian manufacture  
**\$100 – \$2000**

## 19th CENTURY MAPS AND CHARTS

**I51** Blackie & Son  
*Australia and New Zealand*  
Hand-coloured engraving by Edward Weller; Duke St, Bloomsbury  
370 x 540mm  
**\$300 – \$500**

**I52** Hydrographical Map of the World  
Constructed by Augustus Petermann FRGS. Engraved by R Downer, Pentonville, London. Handcoloured  
307 x 490mm  
**\$200 – \$400**

**I53** The Islands of New Zealand  
Published under the Superintendence of the Society for the Diffusion of Useful Knowledge, 1838. 405 x 320mm  
**\$200 – \$300**

**I54** Chart of the World on Mercator's Projection  
hand-coloured engraved map. Showing routes of the explorers with Cooks original outline of New Zealand and parts of the Australian coast and the Alaskan landmass incomplete. 550 x 825mm  
**\$500 – \$1000**

**I55** Australian Colonies and New Zealand  
hand-coloured engraved map, showing the state of 'Victoria' as 'Australia Felix' c.1840  
515 x 605mm  
**\$400 – \$600**

## A MISCELLANY OF 20<sup>th</sup> CENTURY NEW ZEALAND MATERIAL CULTURE

**I56** J A Kinnear  
The barque Raupo (Louisa Craig) under sail on the Waitamata, original hand coloured photograph  
**\$500 – \$700**

**I57** J A Kinnear  
The barque Ysabel under full sail on the Waitamata original handcoloured photograph, c.1920  
in original oak mount and frame  
410 x 560mm  
**\$700 – \$900**

**I58** NZ Tourist & Publicity Dept,  
The Pamir Leaving Wellington Harbour  
hand coloured photograph  
entitled and annotated New Zealand on the mount  
280 x 360mm  
**\$200 – \$300**

**I59** C W Dover  
Lover's Leap, Russell, Bay of Islands  
oil on board  
signed, dated 1944,  
415 x 550mm  
inscribed verso: Two Maori lovers are supposed to have leaped (sic) from the cliff to the rocks below to avoid capture. Painted direct in reality by C W Dover 1944; along with another card further inscribed: Lovers Leap, Russell. Painted from nature by C W Dover, 1944, when sword-fishing with my dear old friend Sir Cecil Whitney, from the back of Flag Hill.

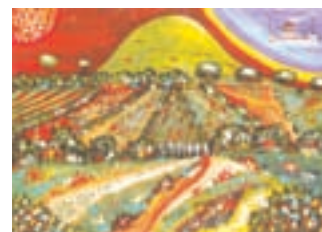
We assume that the artist is the C W Dover whom is referred to in Auckland Museum resources as the taxidermist, who "was actively engaged in shooting birds in the Hauraki Gulf so that the museum would have the freshest possible specimens" and who took on the demanding project of taxidermy of the Auckland Zoo elephant Rajah for display in the Wild Child Gallery.  
**\$350 – \$600**

**I60** Alan Taylor  
Te Kooti Atua  
rare, early relief ceramic plaque  
impressed with artist's monogram, dated 1971 verso  
180 x 180mm  
**\$250 – \$500**

**I61** Alan Taylor  
Untitled landscape  
acrylic on card  
120 x 170  
**\$150 – \$250**



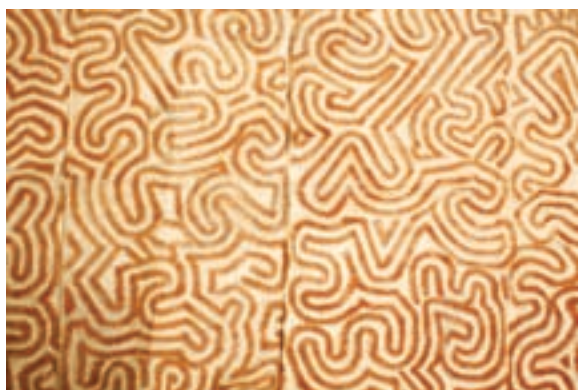
I60



I61



159



143



144



145



142



151



152



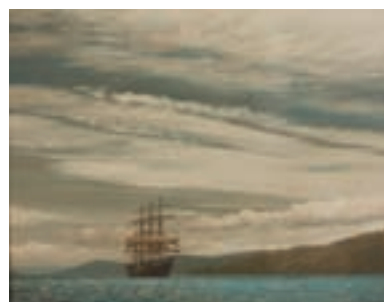
153



154



155



158



157



156



**I62** Unidentified Artist. Walking stick carved as Eve and the Serpent along with a finely carved Kauri walking stick  
**\$300 – \$400**

**I63** RT (Dick) Lyne  
Te Mata Ngahere, Giant Kauri, Northland  
oil on board  
signed dated 11-07  
350 x 250mm  
**\$125 – \$200**

**I64** RT (Dick) Lyne  
Kairaru, Tutamoe Forest, Northland  
oil on board  
signed dated 6-07  
450 x 190mm  
**\$140 – \$220**

**I65** A mid-20th century Maori carving of a figure in the manner of a poutokomanawa. Standing with slightly flexed legs, hands clasped to abdomen. All over 'adzed' finish. H.350mm  
**\$100 – \$175**

**I66** A Maori carved lamp base in the manner of a tekoteko figure, with chiseled features to the wheku head. Incised maker's initials DP and dated 1965 to the back. H.460mm  
**\$400 – \$800**

**I67** A Maori carved inkstand, carved with elements borrowing from a pare (lintel) of a wheku head and contorted limbs. Incised underneath: Rotorua 1947. W.410mm  
**\$400 – \$800**

**I68** An old carved wood tekoteko figure, modeled standing with one hand clenched at his chest, the other holding a patu. Y registered. H.785mm  
**\$300 – \$500**

**I69** A Maori tokotoko (orator's stick) of unusual curving natural branch form, carved with wheku heads and sections of pataki notching. Y registered. Early 20<sup>th</sup> century. L.900mm

**I70**  
A gourd with carved surfaces by the late Pakariki (Paki) Harrison. Inscribed underneath "To Donald, Arohanui, Pakariki Harrison, 6/5/89. H.315mm  
**\$500 – \$800**

**I71** 20<sup>th</sup> century tree fern carving, originally carved for Rainbow Springs, Rotorua, c.1975. H.1100mm  
**\$250 – \$500**

**I72** Carved walking stick by John Moore c. 1990, with bone koruru head finial set above inset paua discs on a carved stick. L.885mm  
**\$155 – 250**

**I73** An archive of Maori music. Comprising 40 LP 12" vinyl discs, various artsit and cultural groups. One complete package Toiapiapi - Hirini Melbourne; 12 pieces of vintage sheet music and a miscellany of books, catalogues and other vinyl. From Ana Hato to Kiri Te Kanawa, from Inia Te Wiata to the HOWard Morrison Quartet and everything between.  
**\$250 – \$500**

**I74** A collection of three pieces of Czechoslovakian China souvenir ware: a small plate and miniature vases; Maoris Cooking, Maori Girl, Maori Chief.  
**\$75 – \$100**

**I75** Pair of souvenir ware Victoria China miniature wheelbarrows. Transfer decorated with Pania of the Reef, Napier, NZ and the Sargeant Gallery, Wanganui, NZ. L.100mm  
**\$50 – \$100**

**I75A** A Grimwades 'Maori Land' plate, hand-coloured with a view of Lake Taupo and mountains, within a shaped border decorated with Maori designs. (Museum repair to rim)  
W.285mm  
**\$350 – \$475**

**I76** J R Blencowe  
Maori women washing clothes in a hot spring, hand-coloured photograph, c.1910, 210 x 270mm.  
Along with another by Blencowe of a Maori woman cooking. Photographer's embossed stamp to mount.  
**\$200 – \$400**

**I77** Kauri folk art chip carved tray with 'rope' carved handles. 560 x 290mm  
**\$110 – \$180**

**I78** Three items of turned laminated native timbers including a 'Kaimanawa' pedestal form and two comports  
**\$110 – \$180**

**I79** Three items of laminated native timbers including a vase, and bowl  
**\$90 – \$140**

**I80** Marine ivory handled walking stick with Malacca cane shaft and large 18ct gold ferrule engraved: *Presented to Mr JN Lee By the Employees of Messrs. Silverlock*

**I81** Fannie Osborne  
Native Berries of New Zealand  
Chromolithograph. Brett Printing Company, Auckland 518 x 346mm  
**\$250 – \$450**

**I82** C F Goldie and Louis John Steele  
The Arrival of the Maori in New Zealand  
colour vintage print, c.1910  
300 x 538mm  
**\$150 – \$250**

**I83** C F Goldie  
Portrait of Atama Paparangi  
colour vintage print, c.1930  
300 x 245mm  
**\$100 – \$200**

**I84** C F Goldie  
Portrait of Ina Te Papatahi  
colour vintage print, c.1930  
250 x 210mm  
**\$100 – \$200**

**I85** C F Goldie  
Kapahi Te Torori (Good! the Tobacco)  
colour vintage print, c.1918  
270 x 225mm  
**\$200 – \$300**

**I86** C F Goldie  
Pair of Enameline Maori Series plaques Kapikapi and 'In Doubt'. c.1940.  
250 x 195mm each  
**\$100 – \$200**

**I87** C F Goldie  
A Good Joke ("Allee Same Te Pakeha.")  
original chromolithograph, c..1910  
390 x 320mm  
in original Goldie roughsawn frame  
**\$500 – \$1000**

**I88** A A McIan, after C F Goldie  
A Hot Day  
oil on canvas  
signed and dated 1911  
460 x 345mm  
Goldie painted his portrait of Patara Te Tuhi in 1901. Within a decade the work was well established in the popular psyche. This copy is 'authentic' in many ways mimicking the original painting even down to size, within a few millimeters.  
**\$500 – \$700**



173



172

180



162



165



166

176  
part

175A



167



168

178  
part

170



182



183



184



185



188



186



187



## 20<sup>th</sup> CENTURY PAINTINGS, PRINTS AND PHOTOGRAPHS

**189**

W Allen Bollard  
A Nocturnal View of Piha  
oil on canvas  
signed, labeled verso, dated 1903  
mm

**\$750 - \$1250**

**190** Sir Edwin Sandys

Hongi's Track, Rotorua, N.Z.  
graphite on paper  
labeled verso  
560 x 415mm  
along with a NZ 'Real Photo Postcard'  
of the same view by Frank Radcliff,  
photographer

**\$250 - \$500**

**191** Sydney Lough Thompson

Portrait of a Maori woman with muka  
cloak  
(possibly Tuwharetoa)  
oil on canvas  
unsigned, letter of Authentication verso  
from the Robert McDougall AG, 1992  
770 x 570mm

**\$2000 - \$3000**

**192** Ellen von Meyern (active c.1900)

Portrait of Maori woman and child  
(in the manner of portraits of Ana  
Rupene)  
watercolour  
signed and dated 1908  
230 x 180mm

**\$1000 - \$2000**

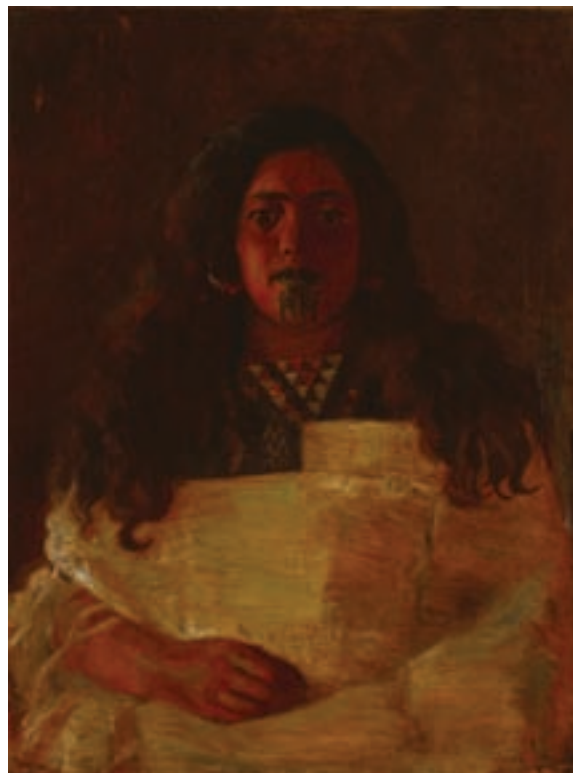
**193** A A Schmidt

A Portrait of a Woman with Shark's  
Tooth Earring and Moko  
oil on board  
signed  
370 x 280mm  
Ref:Thwaites & Fletcher; 'We Learnt to  
See', page 352

**\$500 - \$750**



190



191



192



193



194



197



196



199



200



201



202



203



205



195

**194** Bessie Christie  
The University Tower; c.1950  
ink and watercolour  
Accompanying this lot: Roy Lippencott, The  
Architecture of the Tower; catalogue  
**\$600 - \$800**

**195** Betty Wishart  
Late Spring, Tauranga  
oil on canvas laid on board  
signed, entitled verso  
390 x 505mm  
**\$750 - \$1500**

**196** Trevor Lloyd  
Portrait of young boy and cartoon of parrots  
monogrammed, coloured pencil on buff paper  
300 x 200  
**\$200 - \$300**

**197** Trevor Lloyd  
Portrait of a gentleman  
monogrammed, coloured pencil on buff paper  
300 x 200mm  
**\$225 - \$350**

**198** A S Peterson  
Tattooed Chief (possibly Te Hira Orakei)  
etching, signed and entitled  
270 x 200mm  
**\$300 - \$500**

**199** Nancy Steen  
On the Shores of Taupo  
blockprint, signed and entitled  
**\$150 - \$250**

**200** Nancy Steen  
The Whare, Te Waka  
blockprint, signed and entitled  
a rare print of the Hilary family bach at Karekare  
**\$200 - \$300**

**201** Connie Lloyd  
Mt Edgecumbe  
aquatint etching, signed and entitled  
115 x 175mm  
**\$375 - \$450**

**202** Connie Lloyd  
The Road, c.1930  
aquatint etching, signed and entitled  
100 x 100mm  
**\$300 - \$400**

**203** Connie Lloyd  
Karekare (The Watchman)  
aquatint etching, signed and entitled  
170 x 160mm  
**\$400 - \$500**

**204** Hilda Wiseman (1894 – 1892)  
The flower spreads its wings  
block print, signed and entitled  
250 x 164mm  
**\$250 - \$500**

**205** Herbert R Tornquist  
Campbell Bay  
wood engraving, signed and entitled, artist's  
monogram in the plate, 75 x 50mm  
**\$90 - \$140**



**206** Herbert R Tornquist  
Ohaka Point  
wood engraving  
signed and entitled, 72 x 117mm  
**\$100 - \$150**

**207** Herbert R Tornquist  
Papa Aroha III  
wood engraving  
signed and entitled, 94 x 80mm  
**\$100 - \$150**

**208** Herbert R Tornquist  
Papa Aroha Gully  
wood engraving  
signed and entitled, 96 x 74mm  
**\$110 - \$160**

**209** Herbert R Tornquist  
Papa Aroha Beach. Pt. 3  
wood engraving  
signed and entitled, artist's monogram in  
the plate, 50 x 50mm  
**\$80 - \$130**

**210** Herbert R Tornquist  
Smith's Bush  
wood engraving  
signed and entitled, 112 x 70mm  
**\$110 - \$160**

**211** Herbert R Tornquist  
Paramoremo (sic)  
wood engraving  
signed and entitled, 112 x 130mm  
**\$120 - \$170**

**212** John L Moore  
Kea and Pied Tit, c.1930  
two original woodblock prints  
entitled, in the block  
**\$150 - \$250**

Clarice Brass (1902 – 1994)  
A member of the important and influential  
*Rutland Group*. Brass attended Elam in the  
period immediately following the 2<sup>nd</sup> World  
War. While creatively active over many  
years she exhibited in Auckland at the  
Auckland Society of Arts in the 40's and 50's  
and with the NZAFA in Wellington from  
1949 – 1954. This collection of five portrait  
studies shows clearly her ability in the field  
and the influence of her Elam tutors and  
contemporaries AJ Fisher, John Weeks, A  
Lois White etc.

**213**  
Clarice Brass  
Study of a girl with plaits  
oil on card  
460 x 390mm  
**\$200 - \$300**

**214** Clarice Brass  
Study of a young woman with white  
collar  
oil on card  
450 x 295mm  
**\$200 - \$300**

**215** Clarice Brass  
Native Head  
oil on board  
initialed and dated '47, entitled verso  
420 x 340mm  
**\$200 - \$300**

**216** Clarice Brass  
Portrait of a young boy  
Verso: Portrait of a woman  
oil on board  
signed  
340 x 290mm  
**\$200 - \$300**

**217** A Lois White  
Country Road, c.1950  
oil on board  
unsigned  
letter of authenticity from John Leech  
Gallery verso  
385 x 440mmmm  
**\$750 - \$1250**

**218** Winton Bristow  
Puhoi landscape, c.1950  
oil on board  
signed  
360 x 340mm  
Ref: Thwaites & Fletcher, *We Learnt To  
See, Elam's Rutland Group* pgs 293, 341  
**\$750 - \$1250**

**219** Irvine Major  
South Island landscape (near Nelson)  
oil on board  
signed  
375 x 450mm  
**\$500 - \$700**

**220** A A Tuely  
Four landscapes in the Wellington town  
belt and Botanic Gardens  
oils on board  
signed, c.1900  
largest 255 x 355mm  
**\$600 - \$800**

**221** George Woods  
Angel Fish  
watercolour  
signed and dated '44  
355 x 470mm  
**\$800 - \$1200**

**222** George Woods  
Marinescape  
mixed media on paper  
signed and entitled  
280 x 215mm  
**\$300 - \$500**

**223** Frank Sherman (b.1908)  
The Crab  
wood engraving, 1930s  
signed, entitled and monogrammed in  
the plate  
label verso inscribed: Engraved on a  
piece of kauri end-grain  
50 x 50mm  
[A copy in the AAG Coll 1939/4/84]  
**\$200 - \$400**

**224** E Mervyn Taylor  
Seasoned Veterans  
aquatint etching, signed, dated 1939  
Exhibited: NZ Centennial Exhibition  
1940  
catalogue exhibition copy verso  
180 x 200mm  
**\$1000 - \$1500**

**225** Frederick Vincent Ellis, 1892 - 1961  
Ponte Vecchio, Florence  
etching  
signed, dated 1930, entitled  
170 x 185mm  
**\$400 - \$600**

**226** Eileen Mayo  
Musk Duck  
lithograph 48/50  
signed and entitled  
150 x 170mm  
**\$500 - \$700**



206



207



208



209



210



211



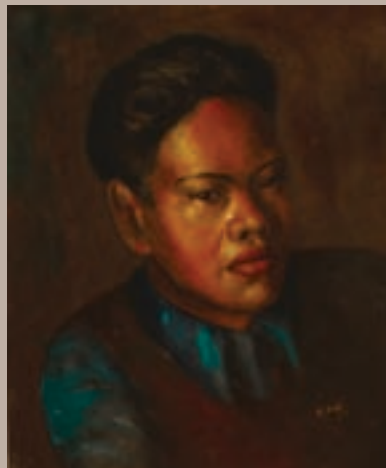
212



213



214



215



216



217



218



219



221



222



223



225



224



226



227

**227** W Basil Honour

The Big Tree

acrylic on canvas

signed and dated '67

600 x 500mm

**\$1250 - \$1750****228** Norman W J Scott

Tone Study No.5

tempera

signed, entitled on label verso

385 x 690mm

**\$150 - \$250****229** Andre Brooke

Still life with fruit and leaves

acrylic

signed

**\$150 - \$250****230** E Mervyn Taylor

Profile

original block print on paper from an edition of 40,  
c.1950s

signed and entitled

315 x 205mm

**\$1000 - \$2000****231** Juliet Peters

Night City Theme

linocut 3/10

signed, entitled and dated '69

495 x 650mm

**\$550 - \$800****232** Kees Hos

Homage to Milan II

linocut engraving 13/30

signed, entitled and dated 1969

680 x 510mm

Version I of this print features ad the cover of Peter  
Cape's 'Printmakers of New Zealand'**\$200 - \$300****233** Selwyn Muru

Tuupuna o te Whenua

lithograph, 46/50

signed, entitled, dated 1990

500 x 695mm

**\$400 - \$600**

229



228



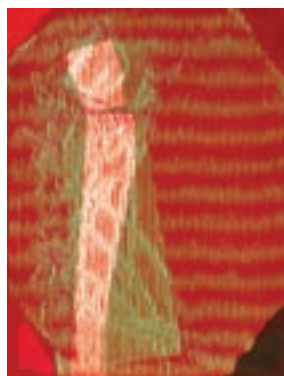
230



231



232



233



**234** Murray Grimsdale

Mt Eden Garden with sculptures from Vanuatu, 1997

acrylic and oil on canvas board

signed and dated '97, entitled verso

490 x 390mm

**\$750 - \$1000**

**235** Murray Grimsdale

Women preparing lap lap

acrylic on board

signed, dated 1994, entitled verso

440 x 400mm

**\$1000 - \$1250**

**236** Murray Grimsdale

Still life with tevaevae, taro and canna lilies, 1989

oil stick and pastel on paper

signed

750 x 540mm

**\$700 - \$1200**

**237** Peter Ireland

The ecstasy of Saint Francis

acrylic on board

signed and dated May/July 1978

entitled verso

700 x 700mm

**\$500 - \$1000**

**238** Jeff Thomson

Corrugated lace

330 x 800mm

**\$750 - \$1200**

**239** Jeff Thomson

Gauguin's Downpipe and others, 1996

three pieces of printed roofing iron

Exhibited: 'Kia Ora, Paeroa', Paul Gauguin Centennial

Exhibition, 1996

**\$2000 - \$3000**

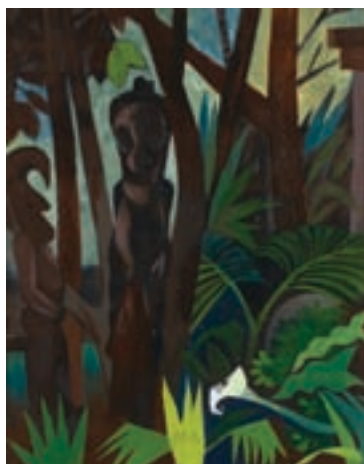
**240** Jeff Thomson

Untitled (Native Birds)

silkscreen print on corrugated iron with oversize lead head nails

680 x 1230mm

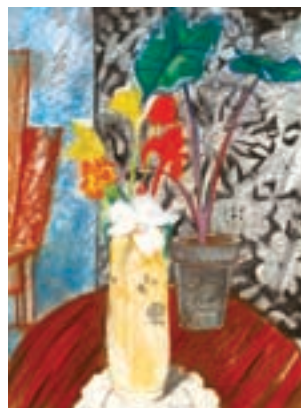
**\$1000 - \$2000**



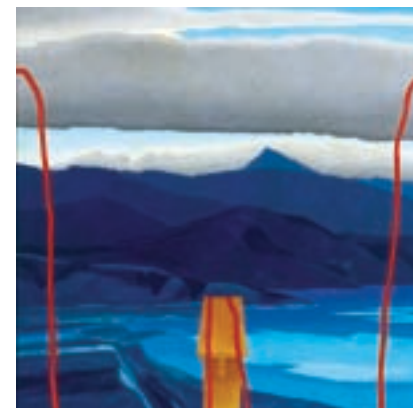
234



235



236



237



238



240





243



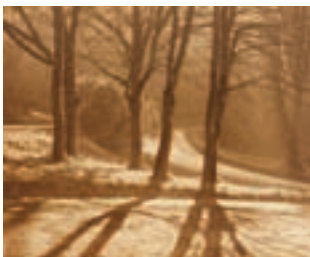
244



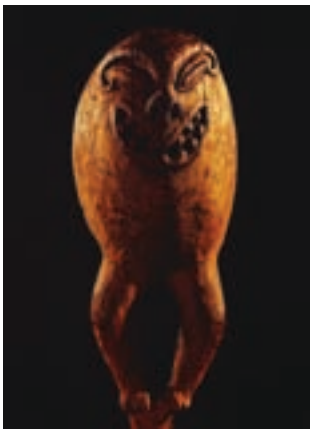
245



246



247



249

**241** Dick Frizzell  
Exhibition Posters [Amazing New Art Show]  
two posters for Frizzell's Retrospective show, City Art Gallery, Wellington, 1997  
a framed street salvage of original exhibition posters  
840 x 290mm  
**\$400 - \$700**

**242** Dick Frizzell  
Queen Elizabeth II Arts Council poster, c.1980 depicting Dick Frizzell's "Portrait as a Serious Artiste"  
755 x 530mm  
**\$300 - \$400**

**243** Innes (Photographer)  
Waihirere Falls near Gisborne  
Hand coloured photograph circa 1920s  
**\$50 - \$100**

**244** Unidentified Photographer  
Te Wairua Falls, Northland  
sepia photograph, c.1920s  
**\$75 - \$125**

**245** Unidentified photographer  
Te Wairua Falls, Northland  
original sepia photograph  
310 x 410mm  
**\$100 - \$200**

**246** George Chance FRPS  
Tukituki River at Clive, Hawkes Bay, NZ  
original silver gelatin print  
207 x 260mm  
**\$100 - \$200**

**247** George Chance FRPS  
Sunshine and Shadow, NZ  
original silver gelatin print  
207 x 260mm  
**\$100 - \$200**

**248** Various New Zealand photographers  
Four views in the Southern Alps  
various sizes, largest 210 x 160mm  
**\$125 - \$200**

**249** Brian Brake  
Northland Skull Casket  
original cibachrome print  
Exhibited: QE II Arts Council, 'Tangata, Maori Images of Man' 1979  
920 x 680mmmm  
**\$500 - \$1000**

**250**  
Whites Aviation c. 1955  
Queenstown  
Handcoloured photograph  
original label verso  
**\$180 - 240**

**251** Whites Aviation c. 1955  
Kaikoura Coast  
Handcoloured photograph  
**\$110 - 200**

**252** Whites Aviation c. 1955  
Lake Matheson  
Handcoloured photograph  
original label verso  
**\$110 - 200**

**253** Whites Aviation c. 1955  
Ohau Road  
Handcoloured photograph  
original label verso  
**\$110 - 200**

**254** Whites Aviation c. 1955  
McKenzie Country  
Hand-coloured photograph  
**\$110 - 200**

**255** Whites Aviation c. 1955  
Lake Hayes  
Hand-coloured photograph  
original label verso  
**\$110 - 200**

**256** Whites Aviation c. 1955  
Mount Cook  
Hand-coloured photograph  
**\$110 - 200**

**257** Whites Aviation c. 1955  
Lake Ohau  
Hand-coloured photograph  
original label verso  
**\$110 - 200**

**258** Whites Aviation c. 1955  
Mount Tasman  
Hand-coloured photograph  
entitled verso  
**\$110 - 200**

**259** Whites Aviation c. 1955  
Clearwater  
Hand-coloured photograph  
**\$110 - 200**

**260** Whites Aviation c. 1955  
Arrowtown Road  
Hand-coloured photograph  
original label verso  
**\$110 - 200**

**261** Whites Aviation c. 1955  
Mitre Peak  
Hand-coloured photograph  
**\$110 - 200**

**262** Whites Aviation c. 1955  
Bastion Point  
Hand-coloured photograph  
original label verso  
**\$110 - 200**

**263** Whites Aviation c. 1955  
New Zealand Bush (Waipoua kauri forest)  
Hand-coloured photograph  
original label verso  
**\$110 - 200**

**264** Whites Aviation c. 1955  
Lake Taupo  
Hand-coloured photograph  
original label verso  
**\$110 - 200**

**265** Whites Aviation c. 1955  
Te Awaroa  
Hand-coloured photograph  
original label verso  
**\$110 - 200**

**266** Whites Aviation c. 1955  
Mount Egmont  
Hand-coloured photograph  
no stamp  
**\$110 - 200**

These lots represent a milestone in New Zealand photographic history and Kiwi culture. Following an historic visit by Queen Elizabeth II in 1954, White's Aviation, under the directorship of Leo White, published a series of images that were an immediate success with the New Zealand public. Marketed as 'beautifully coloured New Zealand scenes for home decoration and worthwhile presents', the prints are to be sold in the same order as they were originally marketed.



250



251



252



253



254



255



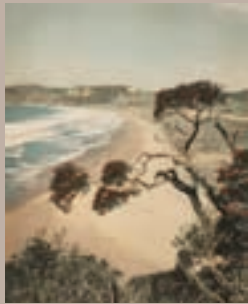
256



257



258



259



260



261



262



263



264



265



266



**267** Whites Aviation c. 1955  
*Muriwai 1950*  
 Hand-coloured photograph  
 Original Whites label verso  
**\$110 - 200**

**268** NZ Tourist & Publicity Dept aerial  
 view of Auckland, c.1955.  
 Original hand-coloured photograph.  
 395 x 500mm  
**\$200 - \$400**

**269** Whites Aviation c. 1955  
*Monowai in the Rangitoto Channel*  
 Hand-coloured photograph  
**\$200 - 350**

**270** Whites Aviation c. 1955  
*Clouds*  
 Hand-coloured photograph  
 Original Whites label verso  
**\$200 - 350**

## NEW ZEALAND CERAMICS - COMMERCIAL

**271** Rare Luke Adams white bodied  
 pottery ginger jar; cast with a pattern  
 of imitation classical sprigged motifs.  
 H.170mm  
**\$300 - \$400**

**272** Luke Adams white bodied pottery  
 games jug, cast with imitation sprigged  
 motifs  
**\$250 - \$350**

**273** Luke Adams white bodied pottery,  
 clear glazed oak leaf barrel jug.  
**\$150 - \$250**

**274** Luke Adams brown glazed oak leaf  
 barrel jug  
**\$150 - \$200**

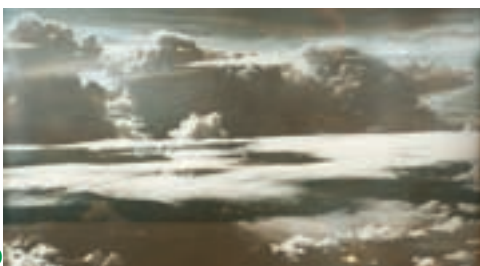
**275** Luke Adams honey glazed, scroll  
 handled oval fruit bowl  
**\$200 - \$300**

**276** A collection of four small Luke  
 Adams cream jugs of various colours  
**\$50 - \$100**

**277** A collection of three small Luke  
 Adams pieces  
**\$30 - \$50**



267



270



**285** Early Luke Adams pedestal vase  
 moulded with three storks, honey  
 treacle glazed. H.142mm  
**\$100 - \$200**

**286** Early Luke Adams jug with honey  
 glaze, tiny rim frit. H.160mm  
**\$50 - \$100**

**287** Three Luke Adams lidded storage  
 crocks. Tallest 160mm  
**\$300 - \$400**

**288** Rare, early Luke Adams double  
 Wentletrap shell wall pocket vase in  
 majolica type glazes.  
 Ref: Gail Henry, NZ Pottery Collectible  
 and Commercial, p.98  
**\$200 - \$300**

**289** Small 'Waters of Leigh Pottery'  
 [J H Lambert] cream jug, modeled  
 naturalistically with tree bark surface.  
 H.80mm. Ref: Gail Henry, NZ Pottery  
 Collectible and Commercial, colour  
 plate 4  
**\$40 - \$90**

**290** Two capstan shaped, red clay vases  
 with coggle wheel decorated bands at  
 waist, each impressed with the letter 'P'  
 attributing the manufacture to Dr Daniel  
 Pollen, Rosebank Road, Avondale.  
 Ref: Gail Henry, 'NZ Pottery Commercial  
 and Collectible' pgs. 136, 137  
**\$90 - \$140**

**291** NZ Brick Co (Albert Crum) squat  
 circular flower vase with pierced stem  
 holder cover.  
 Salt glazed, painted with 'Butcher'  
 underneath. D.250mm  
**\$100 - \$200**

**292** Three Crown Lynn treacle glazed  
 vases  
 ovoid or spherical shaped  
**\$125 - \$225**

**293** Four Crown Lynn 'first period'  
 green-brown dribble glazed vessels  
 Baluster vase, tall jug and two posy vases  
**\$150 - \$200**

**294** Crown Lynn [Ambrico] cereal bowl  
 made for US Servicemen, WWII. Brown  
 treacle glaze. D.160mm.  
 Ref: Gail Henry, NZ Pottery Collectible  
 and Commercial, p.184.  
**\$100 - \$200**

**295** Crown Lynn [Ambrico] cereal bowl.  
 Green drizzle glaze. D.160mm as above  
**\$100 - \$200**

**296** Two Crown Lynn fan shape (#396)  
 vases and a similar Royal Oak vase,  
 in black glaze, white bisque and cold  
 painted pastels  
**\$90 - \$150**

**297** Crown Lynn art deco style study of  
 a foal in high gloss black glaze.  
**\$200 - \$300**

**298** Daniel Steenstra for Crown Lynn  
 Two lidded pots with agate finish and  
 sgraffito banding  
**\$180 - \$250**

**299** Crown Lynn bowl, Shape #390,  
 painted by an unknown artist (possibly  
 Carpay or Jenkins) with brush and  
 airbrush in greens and browns (restored)  
 D.210mm  
**\$250 - 350**

**300** Crown Lynn bowl, Shape #390,  
 painted by an unknown artist (possibly  
 Carpay or Jenkins) with brush in greens  
 and taupe (restored)  
 D.210mm  
**\$250 - 350**



268



282



288



275



279



285



290



291



299



300



296



298



294



295



**301** Crown Lynn Wharetana ware plate. Decorated with a pair of manaia figures. Impressed mark 1010, dark honey-brown glaze. Ex The collection of Sir Tom Clarke. D.250mm  
**\$1000 - \$2000**

**302** Crown Lynn Wharetana ware shallow dish. Dark green glazed. decorated with manaia and spirals around the rim. Impressed mark 1012. D.140mm  
**\$400 - 700**

**303** Crown Lynn Wharetana ware wheku head dish, celadon green glaze. Impressed mark 1014. L.140mm.  
**\$400 - \$800**

**304** Crown Lynn 'Legend' plate, decorated in gilt on raised design with native flora and fauna. Marked verso: Presented to the R thon J R Marshall on the occasion of his official opening of Ceramic House and presentation to Crown Lynn Potteries of the Trade Promotions Council's Export Award. March 1969. Ex the collection of Sir Tom Clarke. W.290mm  
**\$900 - \$1500**

**305** Crown Lynn NZR cup and saucer. Vitrified ware stamp mark to base.  
**\$200 - \$300**

**306** Ernest Shufflebotham for Crown Lynn hand potted vase, shape 5, H.170mm.  
**\$450 - \$650**

**307** Two Crown Lynn souvenir ware vases. Both marked 'Greetings From Rotorua, NZ'. One with model pah gateway, the other with 'Maori Meeting House, Whakarewarewa'  
**\$90 - \$140**

**308** Crown Lynn souvenir ware plate and vase decorated as above. Plate D.170mm, Vase H.90m  
**\$90- \$140**

**309** A selection of various Rotorua souvenir ware. 2 cups and saucers, 2 mini jugs, 2 mini vases.  
**\$100 - \$200**

**310** McSkimmings porcelain traveller's sample miniature toilet pan  
**\$100 - 200**

**311** Titian Studios - Moonlight Under Palm Trees 'Vase' modeled with one of the palm leaves as an incipient handle to allow classification as a jug, therefore attracting reduced sales tax. Sgraffito mark. H.165mm Ref: Gail Henry, NZ Pottery Collectible and Commercial, p.147  
**\$800 - \$1200**

**312** Titian Studios Waka, white matt glaze. Impressed Pottery mark and S.104. L.290mm  
**\$200 - \$400**

**313** Titian Studios black crackle (leather) glazed two handled vase. W.290mm  
**\$200 - \$300**

**314** Three Titian Studios vases oval comport shape with loop handles raised on fluted bases  
**\$50 - \$100**

**315** Five Titian Studios and Crown Lynn shell shaped vases  
**\$100 - \$200**

**316** Two Titian Studio vases. Comport shape with fluted walls and scroll handles, one lustre green, one gloss black  
**\$50 - \$100**

**317** Three Titian Studio ashtrays. Trout and tui decorated, two scalloped shell shaped, one square  
**\$150 - \$250**

**318** Titian Studios 'Egyptian' pattern two handled comport in the manner of a Grecian kylix. D.260mm  
**\$200 - \$250**

## NEW ZEALAND STUDIO POTTERY

**319** Briar Gardner trough vase, incised Maori spiral decoration around the top and notched decoration around the base. Incised signature and NZ 8/10/35.  
**\$250 - \$400**

**320** Briar Gardner circular small dish with the inverted rim incised with double spiral motif. Incised signature and NZ, 25/5/37  
**\$200 - \$300**

**321** Olive Jones small koruru head dish, celadon glazed. Incised signature, NZ and dated 1940  
H.85mm  
**\$300 - \$500**

**322** Olive Jones small ovoid vase with encircling incised kowhaiwhai pattern, Incised signature to the base. Emerald green luster glaze. H.190mm  
**\$400 - \$600**

**323** Jova Rancich cylindrical tankard with strap handle. Impressed maker's marks. H.160mm  
**\$150 - \$300**

**324** Elizabeth Lissaman small 'fern' dish. incised signature and date mark to back. D.120mm.  
**\$100 - \$200**

**325** Barry Brickell Spiromorph form Coromandel clay H.660mm  
**\$950 - \$1500**

**326** Barry Brickell Large water jug (A 'Fatso' precursor) and a deep basin, circa 1970s Coromandel clay  
**\$1000 - \$1500**

**327** Barry Brickell early teapot with side handle, c.1970s. Impressed potter's mark. W.220mm  
**\$100 - \$200**

**328** Barry Brickell squat ovoid vase. Coromandel clay with tenmoku glaze at the mouth. H.180mm  
**\$250 - \$400**

**329** A set of four shallow bowls by Barry Brickell. Impressed with potter's mark. D.230mm  
**\$160 - \$220**

**330** Dave and Judy Parton Square stoneware dish with resit gestural decoration on blue glazed well 340 x 345mm  
**\$150 - \$200**

**331** A pottery coffee mug collaboratively worked by Theo Schoon and Helen Mason. Ash grey glazed body stamped with and encircling repeat design of Schoon's plaster stamps. circa 1984. One of Theo Schoon's last pieces of ceramics, made at Tokomaru Bay. Along with a coffee mug by Helen Mason with the date 1984 in tenmoku glaze to the wall.  
**\$400 - \$600**

**332** Len Castle jug with pulled handle. Impressed potter's mark. H.170mm  
**\$100 - \$200**

**333** Len Castle coffee pot with ash glaze and impressed rope design to walls. Impressed potter's mark. H.205mm  
**\$200 - \$300**



301



304



304 verso



311



305



306



302



303



312



307



320



321



324



318



331



325



326



322



330



323



333



329





# CONDITIONS OF SALE

NOTE IT IS ASSUMED THAT ALL BIDDERS AT AUCTION HAVE READ AND AGREED TO THE CONDITIONS DESCRIBED ON THIS PAGE. ART+OBJECT DIRECTORS ARE AVAILABLE DURING THE AUCTION VIEWING TO CLARIFY ANY QUESTIONS YOU MAY HAVE.

**1 REGISTRATION:** Only registered bidders may bid at auction. You are required to complete a bidding card or absentee bidding form prior to the auction giving your correct name, address and telephone contact + supplementary information such as email addresses that you may wish to supply to ART+OBJECT

**2 BIDDING:** The highest bidder will be the purchaser subject to the auctioneer accepting the winning bid and any vendor's reserve having been reached. The auctioneer has the right to refuse any bid. If this takes place or in the event of a dispute the auctioneer may call for bids at the previous lowest bid and proceed from this point. Bids advance at sums decreed by the auctioneer unless signaled otherwise by the auctioneer. No bids may be retracted. The auctioneer retains the right to bid on behalf of the vendor up to the reserve figure.

**3 RESERVE:** Lots are offered and sold subject to the vendor's reserve price being met.

**4 LOTS OFFERED AND SOLD AS DESCRIBED AND VIEWED:** ART+OBJECT makes all attempts to accurately describe and catalogue lots offered for sale. Notwithstanding this neither the vendor nor ART+OBJECT accepts any liability for errors of description or faults and imperfections whether described in writing or verbally. This applies to questions of authenticity and quality of the item. Buyers are deemed to have inspected the item thoroughly and proceed on their own judgment. The act of bidding is agreed by the buyer to be an indication that they are satisfied on all counts regarding condition and authenticity.

**5 BUYERS PREMIUM:** The purchaser by bidding acknowledges their acceptance of a buyers premium of 15% + Gst on the premium to be added to the hammer price in the event of a successful sale at auction.

**6 ART+OBJECT IS AN AGENT FOR A VENDOR:** A+O has the right to conduct the sale of an item on behalf of a vendor. This may include withdrawing an item from sale for any reason.

**7 PAYMENT:** Successful bidders are required to make full payment immediately post sale – being either the day of the sale or the following day. If for any reason payment is delayed then a 20% deposit is required immediately and the balance to 100% required within 3 working days of the sale date. Payment can be made by Eftpos, bank cheque or cash. Cheques must be cleared before items are available for collection. Credit cards are not accepted.

**8 FAILURE TO MAKE PAYMENT:** If a purchaser fails to make payment as outlined in point 7 above ART+OBJECT may without any advice to the purchaser exercise its right to: a) rescind or stop the sale, b) re offer the lot for sale to an underbidder or at auction. ART+OBJECT reserves the right to pursue the purchaser for any difference in sale proceeds if this course of action is chosen, c) to pursue legal remedy for breach of contract.

**9 COLLECTION OF GOODS:** Purchased items are to be removed from ART+OBJECT premises immediately after payment or clearance of cheques. Absentee bidders must make provision for the uplifting of purchased items (see instructions on the facing page)

**10 BIDDERS OBLIGATIONS:** The act of bidding means all bidders acknowledge that

they are personally responsible for payment if they are the successful bidder. This includes all registered absentee or telephone bidders. Bidders acting as an agent for a third party must obtain written authority from ART+OBJECT and provide written instructions from any represented party and their express commitment to pay all funds relating to a successful bid by their nominated agent.

**11 BIDS UNDER RESERVE & HIGHEST SUBJECT BIDS:** When the highest bid is below the vendor's reserve this work may be announced by the auctioneer as sold 'subject to vendor's authority' or some similar phrase. The effect of this announcement is to signify that the highest bidder will be the purchaser at the bid price if the vendor accepts this price. If this highest bid is accepted then the purchaser has entered a contract to purchase the item at the bid price plus any relevant buyers premium.

## IMPORTANT ADVICE FOR BUYERS

THE FOLLOWING INFORMATION DOES NOT FORM PART OF THE CONDITIONS OF SALE, HOWEVER BUYERS, PARTICULARLY FIRST TIME BIDDERS ARE RECOMMENDED TO READ THESE NOTES.

**(A) BIDDING AT AUCTION:** Please ensure your instructions to the auctioneer are clear and easily understood. It is well to understand that during a busy sale with multiple bidders the auctioneer may not be able to see all bids at all times. It is recommended that you raise your bidding number clearly and without hesitation. If your bid is made in error or you have misunderstood the bidding level please advise the auctioneer immediately of your error – prior to the hammer falling. Please note that if you have made a bid and the hammer has fallen and you are the highest bidder you have entered a binding contract to purchase an item at the bid price. New bidders in particular are advised to make themselves known to the sale auctioneer who will assist you with any questions about the conduct of the auction.

**(B) ABSENTEE BIDDING:** ART+OBJECT welcomes absentee bids once the necessary authority has been completed and lodged with ART+OBJECT. A+O will do all it can to ensure bids are lodged on your behalf but accepts no liability for failure to carry out these bids. See the Absentee bidding form in this catalogue for information on lodging absentee bids. These are accepted up to 2 hours prior to the published auction commencement.

**(C) TELEPHONE BIDS:** The same conditions apply to telephone bids. It is highly preferable to bid over a landline as the vagaries of cellphone connections may result in disappointment. You will be telephoned prior to your indicated lot arising in the catalogue order. If the phone is engaged or connection impossible the sale will proceed without your bidding. At times during an auction the bidding can be frenetic so you need to be sure you give clear instructions to the person executing your bids. The auctioneer will endeavour to cater to the requirements of phone bidders but cannot wait for a phone bid so your prompt participation is requested.

# ABSENTEE BID FORM

This completed and signed form authorizes ART+OBJECT to bid on my behalf at the above mentioned auction for the following lots up to prices indicated below. These bids are to be executed at the lowest price levels possible.

I understand that if successful I will purchase the lot or lots at or below the prices listed on this form and the listed buyers premium for this sale (15%) and GST on the buyers premium. I warrant also that I have read and understood and agree to comply with the conditions of sale as printed in the catalogue.

Lot no.	Description	Bid max
_____	_____	_____
_____	_____	_____
_____	_____	_____
_____	_____	_____
_____	_____	_____
_____	_____	_____
_____	_____	_____
_____	_____	_____
_____	_____	_____
_____	_____	_____
_____	_____	_____
_____	_____	_____
_____	_____	_____
_____	_____	_____

**PAYMENT AND DELIVERY** ART+OBJECT will advise me as soon as is practical that I am the successful bidder of the lot or lots described above. I agree to pay immediately on receipt of this advice. Payment will be by cash, cheque or bank transfer: I understand that cheques will need to be cleared before goods can be uplifted or dispatched. I will arrange for collection or dispatch of my purchases. If ART+OBJECT is instructed by me to arrange for packing and dispatch of goods I agree to pay any costs incurred by ART+OBJECT. Note: ART+OBJECT requests that these arrangements are made prior to the auction date to ensure prompt delivery processing.

Please indicate as appropriate by ticking the box:      PHONE BID ☐      ABSENTEE BID ☐

MR/MRS/MS: \_\_\_\_\_ SURNAME: \_\_\_\_\_

POSTAL ADDRESS: \_\_\_\_\_

STREET ADDRESS: \_\_\_\_\_

BUSINESS PHONE: \_\_\_\_\_ MOBILE: \_\_\_\_\_

FAX: \_\_\_\_\_ EMAIL: \_\_\_\_\_

Signed as agreed: \_\_\_\_\_

To register for Absentee bidding this form must be lodged with ART+OBJECT prior to the published sale time in one of three ways:

1. Fax this completed form to ART+OBJECT +64 9 354 4645
2. Email a printed, signed and scanned form to: [info@artandobject.co.nz](mailto:info@artandobject.co.nz)
3. Post to ART+OBJECT, PO Box 68 - 345 Newton, Auckland 1145, New Zealand

**ART+OBJECT** 3 Abbey Street, Newton, Auckland, New Zealand. Telephone +64 9 354 4646, Freephone 0800 80 60 01



# CONTACTS



HAMISH CONEY  
Managing Director  
[hamish@artandobject.co.nz](mailto:hamish@artandobject.co.nz)  
021 509 550



BEN PLUMBLY  
Director Art  
[ben@artandobject.co.nz](mailto:ben@artandobject.co.nz)  
021 222 8183



JAMES PARKINSON  
Director Valuations  
[james@artandobject.co.nz](mailto:james@artandobject.co.nz)  
021 222 8184



ROSS MILLAR  
Director Objects  
[ross@artandobject.co.nz](mailto:ross@artandobject.co.nz)  
021 222 8185

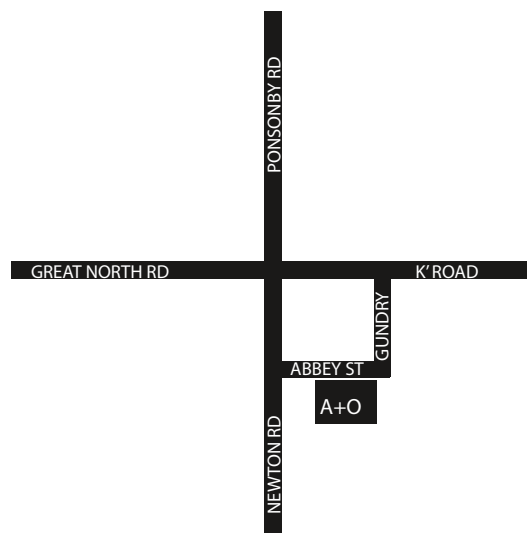


LEIGH MELVILLE  
Front of House Manager  
[leigh@artandobject.co.nz](mailto:leigh@artandobject.co.nz)  
09 354 4646



GEORGIE CAUGHEY  
Valuation Consultant  
09 354 4646

THE 21<sup>ST</sup> CENTURY AUCTION HOUSE  
ART + OBJECT



3 Abbey Street,  
Newton  
PO Box 68 345,  
Newton  
Auckland 1145,  
New Zealand

Telephone +64 9 354 4646  
Freephone 0800 80 60 01  
Facsimile +64 9 354 4645  
[info@artandobject.co.nz](mailto:info@artandobject.co.nz)  
[www.artandobject.co.nz](http://www.artandobject.co.nz)

## **THE JOHN PERRY COLLECTION**

TUESDAY 18<sup>TH</sup> AUGUST 6.30pm

## **NEW COLLECTORS ART**

THURSDAY 20<sup>TH</sup> AUGUST 6.00pm

## **20TH CENTURY DESIGN**

THURSDAY 20<sup>TH</sup> AUGUST 6.45pm

## **THE ROSS SUTTON TOY COLLECTION**

SATURDAY 22<sup>ND</sup> AUGUST 2.00pm

