

# ART OBJECT

THE 21<sup>ST</sup> CENTURY  
AUCTION HOUSE





## CONTENTS

- 2 Introduction 'What do we learn from collectors?'
- 4 Important Paintings July 30 Auction Highlights
- 7 Auction Preview - This Land
- 14 Reminiscences of John Perry - Ross Millar
- 21 A rare Wallisian (Uvea) tapa aquired by John Perry in 1964
- 56 New Collectors Art, lot 409 - Memories of Rembrandt  
a mezzotint by John Drawbridge
- 65 20th Century Design
- 68 The Legacy of Garth Chester's Curvesse Chair  
- a modern homage by Gregory Smith
- 79 The Ross Sutton Toy Collection  
- FUN HO! - World Famous in New Zealand



ART  
OBJECT

THE 21<sup>ST</sup> CENTURY  
AUCTION HOUSE

## **THE JOHN PERRY COLLECTION**

TUESDAY 18<sup>TH</sup> AUGUST 6.30pm

## **NEW COLLECTORS ART**

THURSDAY 20<sup>TH</sup> AUGUST 6.00pm

## **20TH CENTURY DESIGN**

THURSDAY 20<sup>TH</sup> AUGUST 6.45pm

## **THE ROSS SUTTON TOY COLLECTION**

SATURDAY 22<sup>ND</sup> AUGUST 2.00pm

3 Abbey Street,  
Newton  
PO Box 68 345,  
Newton  
Auckland 1145,  
New Zealand

Telephone +64 9 354 4646  
Freephone 0800 80 60 01  
Facsimile +64 9 354 4645  
[info@artandobject.co.nz](mailto:info@artandobject.co.nz)  
[www.artandobject.co.nz](http://www.artandobject.co.nz)

“What do we learn from collectors and collecting? To live over other people's lives is nothing unless we live over their perceptions, live over the growth, the change, the varying intensity of the same, since it was by these things they themselves lived.”

Henry James 1903

Welcome to the ensemble performance that best describes A+O's latest catalogue. In the four offerings that you will find in these pages and on exhibition from August the 14<sup>th</sup> there really has to be something for just about everyone + the excitement of viewing two great collections assembled over a lifetime.

John Perry is perhaps New Zealand's most well known authority on Social History, Folk Art and Natural History. From his time as Director of the Bath House Museum in Rotorua to his ownership of the cornucopia that was Global Village Antiques in Helensville John's influence, eye and ability to track down the most fascinating of objects has inspired, influenced and occasionally bewildered literally thousands of collectors, visitors and the plain curious. We recommend you set aside a good day or three to view the selection from his breathtaking collection which goes to auction on August 18.

The 20<sup>th</sup> Century Design Catalogue features a splendid suite of 27 booklets of advertising illustrations by John Osborne dating from 1946. At over 100 individual illustrations the collection is a fascinating insight into the world of advertising long before the advent of the computer. The collection will be offered at auction on August 20.

The final auction of the catalogue is The Ross Sutton Toy Collection and it constitutes one of the finest toy collections ever offered at auction in New Zealand. Spanning the late 19<sup>th</sup> century to almost the present day the catalogue includes trains, die-cast, dolls, tinplate and is particularly strong in New Zealand content and specifically Fun Ho! Ross' entire collection will be offered to a new generation of collectors on Saturday the 22<sup>nd</sup> of August. Toy fans start your engines!

We feel privileged that two great collectors in John and Ross have chosen ART+OBJECT to auction their collections and assist in passing the flame to a whole new group of collectors who will keep the passion alive.

Please note: exhibition images of the catalogue will be uploaded daily online from 14<sup>th</sup> to 21<sup>st</sup> August at [www.artandobject.co.nz](http://www.artandobject.co.nz), hit NEWS on navigation bar





# Live a little, a lot.



The first ever IS convertible is ready to play.

Meet the new Lexus IS250 convertible - luxury with a mischievous side. Hit the road in a hard top and switch to convertible in just 20 seconds. The premium audio and air conditioning work just as well with the roof down and whether you're skipping town or going shopping, multiple airbags and a clever Vehicle Dynamics Integrated Management system will keep you out of trouble. So go on, live a little and test drive the brand new IS250 convertible today.



[www.lexus.co.nz](http://www.lexus.co.nz)

# highlights from the important paintings auction

JULY 30TH 2009



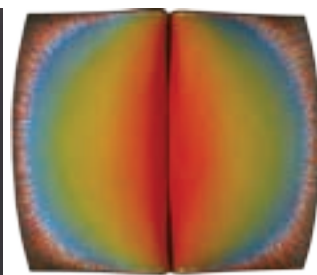
LEO BENSEMANN  
Portrait of Sydney Lough-Thompson  
\$19 390



SHANE COTTON  
Wake  
\$205 000

JULIAN DASHPER  
Tolaga Bay at Fergusson Wharf  
\$11 406

YUK KING TAN  
Pohutukawa  
\$4448



MILAN MRKUSICH  
Meta Grey, Red  
\$47 500\*

TED BULLMORE  
Astroform (Bliss)  
\$19 390



JUDE RAE  
Nexus II  
\$35 358

JOHN PULE  
Nofotatu Moru Tukulagi  
\$51 328

PETER ROBINSON  
Us and Them  
\$20 530

RICHARD KILLEEN  
Know This Place  
\$42 203

TERRY STRINGER  
The Source  
\$23 953



all prices include buyers premium unless indicated





through the looking glass...



# New

EXHIBITIONS + EVENTS + CAFE + SHOP

THE NEW DOWSE



45 Laings Rd, Lower Hutt + [www.newdowse.org.nz](http://www.newdowse.org.nz)



# THIS

# LAND:

AN UNPRECEDENTED ARCHIVE COLLECTION OF  
SIXTY WORKS BY RALPH HOTERE, *NEVER BEFORE*  
*SIGHTED BY THE NEW ZEALAND PUBLIC.*

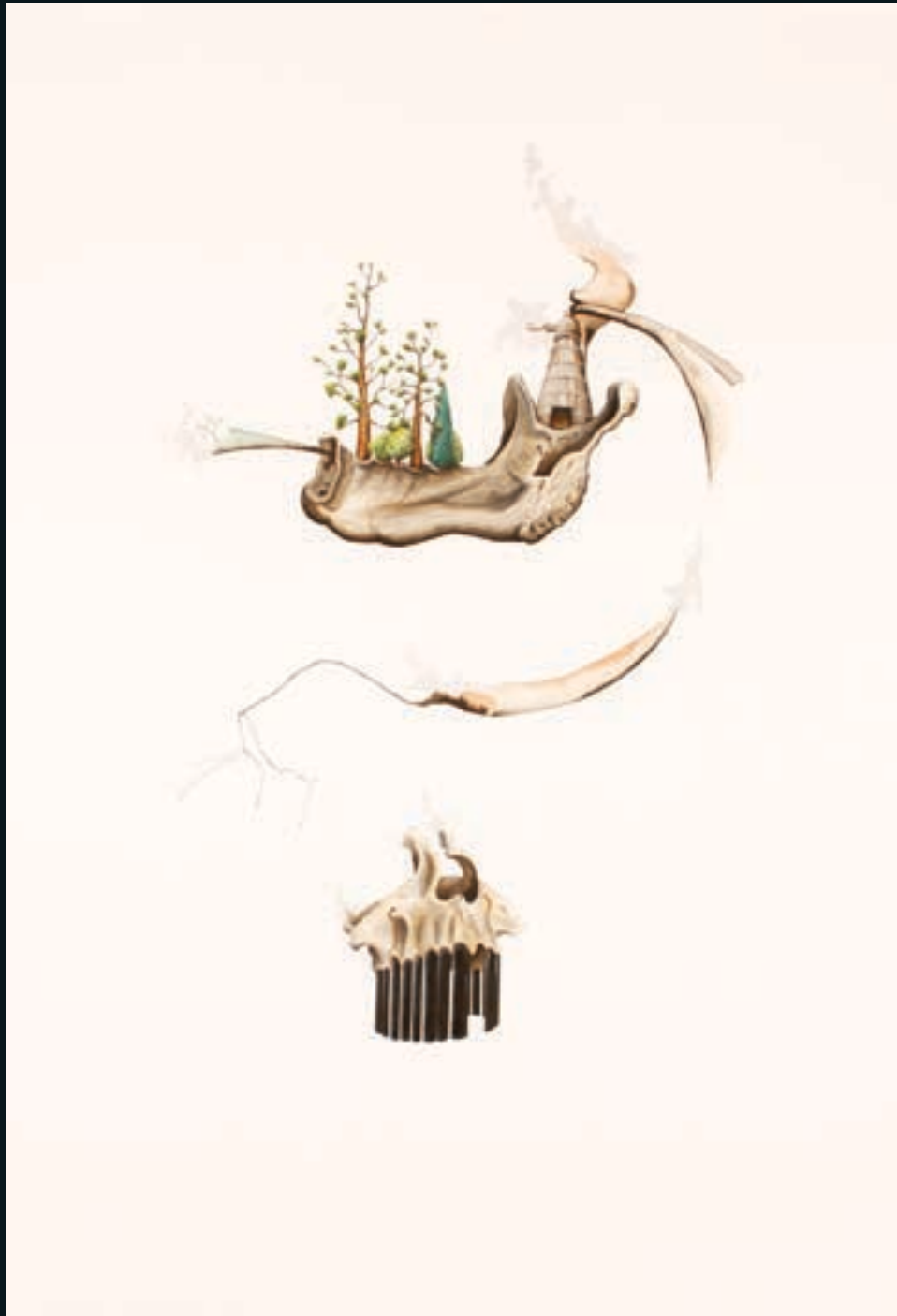
6:30 PM

# SEP 24



# contemporary art

OCTOBER 2009



Simon Esling  
*The Nursery*  
Ink and watercolour on paper  
2007  
1050 x 760mm  
\$2500 - \$4000

Entries invited for this auction Contact Ben Plumbly ph 09 354 4646 021 222 8183 or [ben@artandobject.co.nz](mailto:ben@artandobject.co.nz)





Martin Poppelwell  
*OOPS*  
Glazed ceramic  
410 x 320mm  
\$750 - \$1100

+ objects  
OCTOBER 2009

Entries invited for this auction Contact Ross Millar ph 09 354 4646 021 222 8185 or [ross@artandobject.co.nz](mailto:ross@artandobject.co.nz)



# important paintings + sculpture

NOVEMBER 27 2009



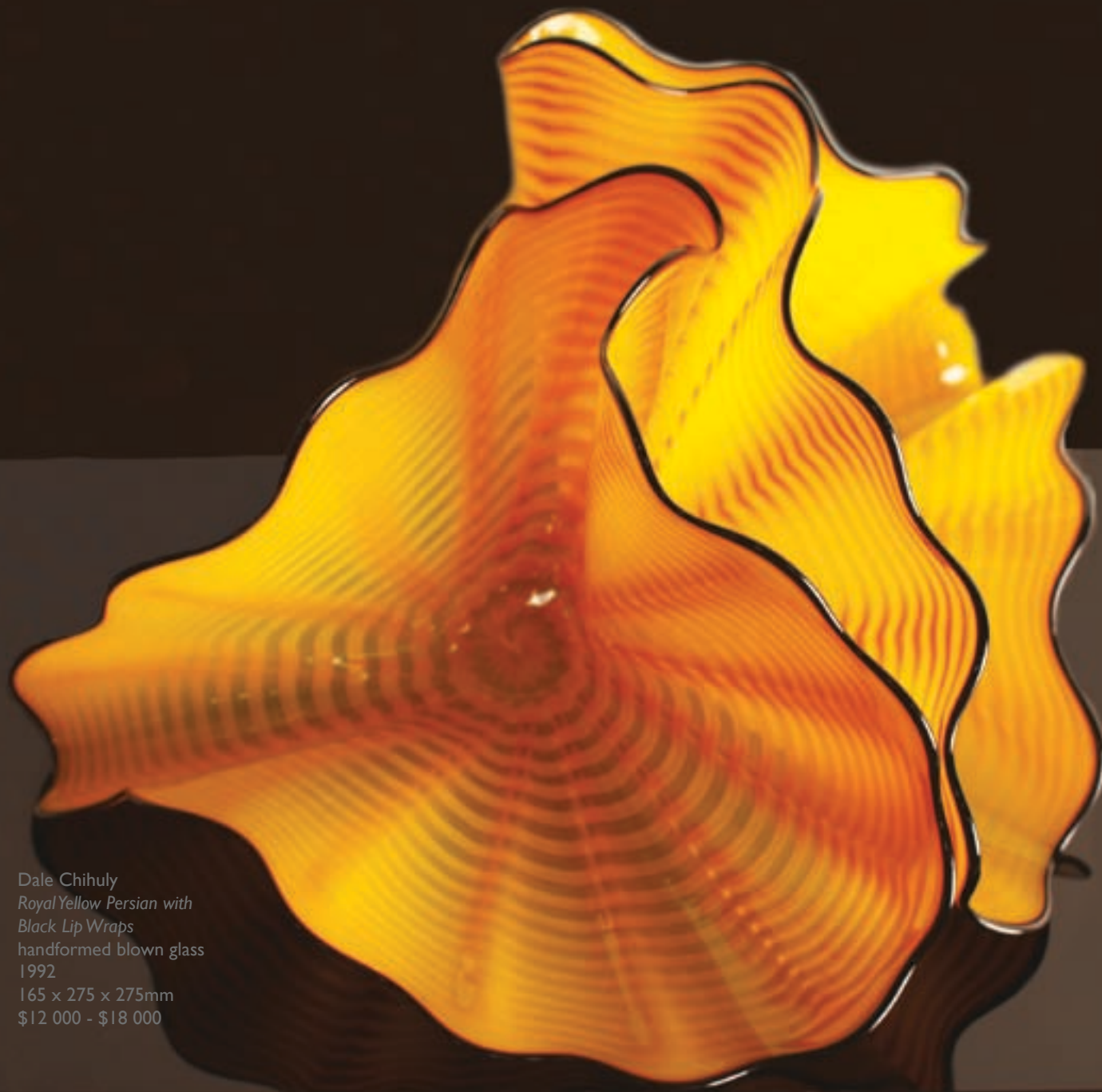
Shane Cotton *Hopa* oil on canvas, 1998, 1857 x 1550mm \$130 000 - \$170 000

Entries invited for this auction Contact Ben Plumbly ph 09 354 4646 021 222 8183 or [ben@artandobject.co.nz](mailto:ben@artandobject.co.nz)



# objects of desire • DECEMBER 2009

A+O is pleased to announce a new sale category focusing on the unique, esoteric, rare and desirable from all periods. Limited to just one hundred items this catalogue will be a tribute to the singular artistic visions in the decorative arts



Dale Chihuly  
*Royal Yellow Persian with  
Black Lip Wraps*  
handformed blown glass  
1992  
165 x 275 x 275mm  
\$12 000 - \$18 000

Entries invited for this auction Contact Ross Millar ph 09 354 4646 021 222 8185 or [ross@artandobject.co.nz](mailto:ross@artandobject.co.nz)





# TOYS

WHERE WHEN HOW WHY



# The Ross Sutton Toy Collection

SATURDAY 22<sup>TH</sup> AUGUST 2.00PM

3 Abbey Street, Newton, Auckland

VIEWING:

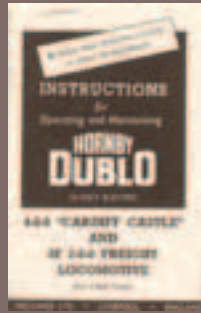
Opening Event

Friday	14 August	6.00pm	–	8.30pm
Friday	14 August	10.00am	–	5.00pm
Saturday	15 August	11.00am	–	4.00pm
Sunday	16 August	11.00am	–	4.00pm
Monday	17 August	11.00am	–	4.00pm
Tuesday	18 August	9.00am	–	2.00pm
Wednesday	19 August	9.00am	–	5.00pm
Thursday	20 August	9.00am.	–	2.00pm
Friday	21 August	9.00am	–	5.00pm
Saturday	22 August	10.00am	–	2.00pm



# The ROSS SUTTON TOY *collection*

702



705



704



717



As a child I lived on a farm and at an early age went off to boarding school. I therefore have no recollection of a toy shop in my childhood. I did receive a piece of Hornby in my Christmas pillow case and in school holidays used to make rolled up paper marionettes which I constructed a make-shift puppet theatre and gave puppet shows to school friends and family.

In the 1970's I began attending the odd toy auction and purchasing items the first of which were trains. Then my children bought me Matchbox Models of Yesteryear and my collection grew.

In 1988 we moved to Hamilton where I decided to establish an antique business and Carousel Antiques was launched. I spotted the carousel horse ( lot 893) in an Upper Hutt antique shop and by time I had decided to call my business after it, another antique shop had bought it and I had to pay another \$500 to acquire this lovely display piece.

Carousel Antiques opened just after the 1987 share market crash and I quickly noted that kauri tables and Persian rugs took an eternity to sell whilst the small selection of toys I had at that time, mostly Matchbox and Fun Ho marched out the door. Not long after, Proctors Auction House in Timaru offered a huge sale of toys and a friend flew me down for the day. I was their largest customer and we filled the plane with tin toys. From then on I had a reputation for toys and 'the rest is history'.

My biggest single purchase I ever made was of a private collection in Blenheim. There were 10 000 Matchbox items mostly Superfast models. Only a small remnant of that collection remains but Matchbox was always my biggest seller and formed the nucleus of my display.

I once purchased sight unseen, a Triang double decker bus, and when it arrived found that it had been lying in a fowl house for twenty years. I had it sand blasted and powder coated and it is on sale as part of my collection (lot 903). Over the years the number of Triang and Tonka vehicles grew.

Over the years I met some wonderful customers. I well remember the ho-hum day when an elderly lady walked into the shop with a plastic bag. She said 'she was sick of looking after her brother's toys after fifty odd years' and decided to sell them. Inside were two lovely Lehman mechanical toys.

Another occasion was when a Hamilton man rang me and I met him at a local address. They were selling the family home and were clearing out. He and his brother had a privileged childhood and inside the house was an amazing collection of mid to late 1930's tin toys including the rare Diamond Truck (lot 1217).

While most collectors follow a particular manufacturer or are thematic collectors which might include TV or film related toys, truck or car makers (VW, Holden etc), my collection has been brought together across the board. There is a great selection of die-cast and tinplate cars, trucks and trains but also dolls, teddy bears and puppets. To have worked in this field and amongst such wonderful people has been a life-enriching experience.

## BOOKS + CATALOGUES

**700** Mixed lot of approx 17 product catalogues – Burago, Siku, Sindy, Maisto, Heller, Meccano & Fisher Price from mid 1980s to 2000s

**\$20 - \$40**

**701** 26 Matchbox Product Catalogues – complete run from 1969 to 1992 – 26 items

**\$125 - \$200**

**702** 10 Hornby O & OO Gauge Product Catalogues from 1940s to early 1960s – 10 items (one photocopied)

**\$125 - \$175**

**703** 14 Lego Product Catalogues – various years from 1987 – 14 items

**\$50 - \$100**

**704** 2 Corgi Product Catalogues – 1958 & USA 1959 – 2 items

Excellent condition – extremely rare examples

**\$100 - \$200**

**705** 3 Meccano Product Catalogues – 1953 & 1954 – 2 items includes Meccano, Dinky & Hornby ranges – one catalogue overprinted with the NZ distributor C. Smith Ltd 94 Cuba Street, Wellington some delightful period price annotations by a dedicated collector! – 3 items

Good Plus condition

**\$75 - \$150**

**706** 10 Britains Product Catalogues from 1970 to 1995 – 10 items

Excellent condition

**\$50 - \$100**

**707** Meccano Magazine Vol. XXI. No. 10 October 1936, Cover features 'A Veteran Maori Chief' with accompanying article. Note Frank Wiseman 170-172 Queen Street Auckland Stamp on page 1

Good Condition

**\$200 - \$300**

**708** 2 Matchbox Catalogues inc. Matchbox Series – A Moko Lesney No.1, 1957 in BW & 1962 International Pocket Catalogue in colour

Good condition

**\$100 - \$200**

**709** 3 Dinky American Catalogues inc. 1958 showing Houses of Parliament with prices in US Dollars, 1955 Hudson Dobson issue with colour cover & BW internal pages & one other mid 1950s Hudson Dobson – 3 items

Excellent condition

**\$100 - \$200**

**710** 20 Toyworld Product Catalogues

**\$25 - \$50**

**711** 7 Mixed Product Catalogues inc. Mamod, Matchbox, Marklin & Corgi

**\$25 - \$50**

**712** 4 Hardback Toy Collectors Books - Tinplate & Diecast inc. The Encyclopedia of Toys, Constance Eileen King author; Hale Pub. 1978, A Connoisseur's Guide to Antique Toys, Ronald Pearsall author; Todtri Pub. 1999, Transport Toys, G. Gardiner & R. O'Neill authors, Hodder & Stoughton Pub. 1985 & Toy Cars, G. Gardiner & R. O'Neill authors, Hodder & Stoughton Pub. 1985 – 4 items

**\$100 - \$200**

**713** 5 Hardback Toy Collectors Books – Teddy Bears & Dolls inc. The Ultimate Teddy Bear Book, Pauline Cockrill author; DK Books Pub. 1991, Teddy Bears – A Celebration, Mary Hillier author; Ebury Press Pub. 1985, Collecting Antique & Old Dolls, Romy Roeder author; Kangaroo Press Pub. 1984, Pollock's Dictionary of English Dolls, Mary Hillier author; Crown Publishers Pub. 1982 & The Collector's Encyclopedia of Toys & Dolls, Lydia Darbyshire edit. New Burlington Pub. 1990 – 5 items

**\$100 - \$200**

**714** 5 Hardback Toy Collectors Books – Trains inc. Toy Trains, Ron McCrindell author; Tiger Books Pub. 1989, The Art of Hornby, compiled by Richard Lines, Kaye & Ward Pub., Hornby Dublo Golden Jubilee, Michael Foster author; New

Cavendish Books Pub. 1988, The Hornby Gauge O System, Chris & Julie Graebe authors, New Cavendish Books Pub. 1985 & Little Trains of Thought, Merv Smith & Ches Livingstone authors, Whitcoulls NZ publishers – A Kiwi Collectors Classic!! – 5 items

**\$100 - \$200**

**715** 3 Hardback Toy Collectors Books – Matchbox inc. Matchbox Diecast Toys, K. McGimpsey & S. Orr authors, Major Productions Ltd 1989, Matchbox Toys, Bruce and Diane Stoneback authors, Apple Press Pub. 1993 & Lesney 'Matchbox' 1-75 Series Diecasts, Maurice Hammond author; Reedminster Pub. 1972 – 3 items

**\$75 - \$150**

**716** Hardback Toy Collectors Book – Corgi, The Great Book of Corgi, Marcel R. Van Cleemput author; New Cavendish Books Pub. 1989 together with The Corgi Toys Complete Price Guide & The great Book of Corgi – 3 items

**\$50 - \$100**

**717** Hardback Toy Collectors Book – Dinky, Dinky Toys & Modelled Miniatures, Mike & Sue Richardson authors, New Cavendish Books Pub. 1986

**\$40 - \$80**

**718** 2 Sci-Fi Soft cover books, Stingray & Space Adventure Collectibles – 2 items

**\$20 - \$40**

**719** Hardback Toy Collectors Book – Toy Soldiers, Andrew Rose author; Tiger Books Pub. 1989

**\$20 - \$30**

**720** 5 Hardback Toy Collectors Book – Tinplate inc. The Minic Book, Peter Bartok author; New Cavendish Books Pub. 1987, Lehmann Toys, J & M Cieslik authors, New Cavendish Books Pub. 1982, Metal Toys & Automata, Constance King author; Apple Press Pub. 1989, The Price Guide to Metal Toys, G. Gardiner & A. Morris authors, Antique Collectors Club Pub. 1982 & Marklin 1895 – 1914, Denys Ingram Pub. 1983 – 5 items

**\$100 - \$200**

**721** 2 unused Coronation & Royal Visit Scrapbooks – both showing the Royal Couple's New Zealand Itinerary from 1953

**\$25 - \$50**

**721a** Mixed Scraps – Flowers, Planes, Flags, English figures, etc

**\$30 - \$60**

**722** 3 Jigsaws – Castle in box, Queen & one other

**\$30 - \$50**

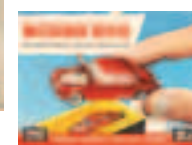
**707**



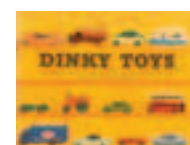
**716**



**708**



**709**







727



739



740



735



737

## STAR WARS TOYS +

**723** 5 Kenner Star Wars figures  
Uncarded inc. Imperial Tie fighter pilot,  
Boss K bounty hunter, B Wing pilot, AT AT  
driver and Biker scout – 5 items  
**\$50 - \$100**

**724** 6 Kenner Star Wars figures  
Uncarded inc. 2 x Imperial Stormtroopers  
inc. Hoth guard variant, Imperial  
Commander, Cloud car pilot, AT ST  
driver and Bespin security guard (black)  
– 6 items  
**\$75 - \$125**

**725** 5 Kenner Star Wars figures  
Uncarded Ewoks inc. Wicket W. Warwick,  
Paploo, Chief Chirpa, Lumat and Logray  
some with accessories – 5 items  
**\$100 - \$200**

**726** 5 Kenner Star Wars figures  
Uncarded inc. ZuKuss, IG-88 bounty  
hunter, FX-7 medical droid, Two Onabee  
2 -IB medical droid, 8D8 robot 5 items  
**\$50 - \$100**

**727** 3 Kenner Star Wars figures  
Uncarded Han solo in Bespin, Carbonite  
Block and 1977 variants – 3 items  
**\$60 - \$100**

**728** 6 Kenner Star Wars figures  
Uncarded inc. Pruneface with cape,  
Hammerhead, Walrus Man, Ree Yees,  
Nikto and Gamorrean Guard – 6 items  
**\$75 - \$125**

**729** 1 Kenner Star Wars figure  
Uncarded (scarce) Amanaman figure  
with staff and collectors coin  
**\$150 - \$250**

**730** 1 Kenner Star Wars figure  
Mint on card ROTJ Gamorrean Guard  
1983  
**\$50 - \$100**

**731** 5 Kenner Star Wars figures  
Uncarded inc. Klaatu skiff guard x 2  
variants, Weequay, Rebel Commando and  
Lobot  
**\$50 - \$100**

**732** 3 Kenner Star Wars figures  
Uncarded inc. R5D4, R2D2 and C3PO  
**\$60 - \$100**

**733** 6 Kenner Star Wars figures  
Uncarded inc. Bib Fortuna, Admiral Akbar,  
Imperial Dignitary with collectors coin,  
Emperor's Royal Guard, Lando Calrissian  
and Chewbacca – 7 items  
**\$150 - \$250**

**734** Star wars figure accessories  
Tatooine accessory pack and approx 6  
firearms etc  
**\$50 - \$100**

**735** 5 Kenner Star Wars figures  
Uncarded inc. Luke Skywalker x 3 variants  
inc. rare Battle Poncho & X Wing fighter  
pilot and collectors coin with Princess  
Leia x 2 variants inc. Battle Poncho - 6  
items  
**\$300 - \$400**

**736** 5 Kenner Star Wars figures  
Uncarded inc. Boba Fett, Princess Leia,

Chewbacca, Lando Calrissian in Skiff  
Guard disguise and R2D2  
**\$100 - \$200**

**737** 1 Kenner Star Wars figure  
Darth Vader with purple light sabre  
**\$75 - \$150**

**738** 1 Hitari Star Wars Figure – Battery  
Powered Darth Vader with Light Sabre, H.  
320mm  
**\$25 - \$50**

**739** Kenner Star Wars Figure  
Luke Skywalker ROTJ in Jedi Knight  
Outfit  
Mint in unopened blister pack on card –  
extremely rare issue  
**\$250 - \$400**

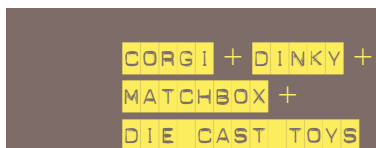
**740** Kenner Star Wars Figure  
Luke Skywalker ROTJ Mint in unopened  
blister pack on card with collectors coin –  
extremely rare issue  
**\$250 - \$400**

**741** Kenner Star Wars Figure  
Lumat Ewok ROTJ  
Mint in unopened blister pack on card –  
extremely rare issue  
**\$150 - \$300**

**742** Kenner Star Wars Figure  
Qui Gon Jinn Episode I – Commtech  
chip version  
Mint in unopened blister pack on card  
**\$25 - \$50**



729



**743** Corgi 484 Dodge 'Kew Fargo' Livestock Transporter with animals and Corgi 62, Farm Tipper Trailer; both mint in excellent boxes – 2 items  
**\$200 - \$300**

**744** Corgi 804 Noddy's Car in Yellow & red with Noddy, Big Ears & Grey Faced Golly. Good plus condition  
**\$75 - \$150**

**745** Corgi 804 Noddy's Car in yellow & red with Noddy, Big Ears & Brown Face Tubby. Excellent condition  
**\$100 - \$200**

**746** 5 Corgi Noddy Themed Cars & Figures from 2001 inc Mr. Sparks & car; Noddy & car; Big ears & car; PC Plod & car and Gobbo with car together with 3 Ertl wind-up Noddy figures – 8 items  
 Mint in excellent cellophane fronted carded boxes  
**\$100 - \$150**

**747** Corgi Toys Major 1119 H.D.L Hovercraft. Mint in good plus box  
**\$100 - \$200**

**748** Corgi 261 James Bond Aston Martin DB5 'Goldfinger' Near mint in excellent plus box with all mechanicals functioning— includes secret instruction pack inc. Top Secret brochure, 2 spare bandit figures and rare 007 stickers  
**\$400 - \$600**

**749** Corgi 802 'Popeye's Paddlewagon' in yellow, white, blue and complete with all figures and chimney stack  
 Unboxed in near mint condition  
**\$200 - \$300**

**750** 2 Corgi Juniors Novelty toys inc. Olive Oyl in plane and Popeye in boat & Matchbox Olive Oyl in Convertible – 3 items. Unboxed in excellent condition  
**\$50 - \$75**

**751** Corgi 266 Chitty Chitty Bang Bang – missing Jemima figure  
 Unboxed in good plus condition  
**\$100 - \$150**

**752** 2 Corgi cars inc. 233 Heinkel Economy Car in pink & white with red interior & 226 Morris Mini Minor in metallic deep claret with cream interior – 2 items  
 Good Plus to near mint (266 is an exceptional example) in good to excellent carded boxes  
**\$200 - \$300**

**753** 3 Tootsie Toys (American) circa 1930s Sedans & in yellow and red & one Delivery Van in orange with rubber wheels  
 Good condition  
**\$100 - \$200**

**754** Franklin Mint (American) 1 with red interior and opening doors, boot & hood - highly detailed model with original tag.  
 Excellent condition  
**\$75 - \$150**

**755** Franklin Mint (American) 1 onnet with tan interior and opening doors, boot & hood - highly detailed model with original tag.  
 Excellent condition  
**\$75 - \$150**

**756** Franklin Mint (American) 1 989 in silver with grey interior and opening doors, boot & hood - highly detailed model with original tag.  
 Excellent condition  
**\$100 - \$200**

**757** Marklin (West Germany) Miniature Auto 8025 Mercedes 190SL, light green with red interior  
 Mint in excellent plus box  
**\$200 - \$300**

**758** Marklin Miniature Auto 8019 Mercedes 300SL, light green with black interior. Mint in good plus box  
**\$300 - \$400**

**759** Solido (France) 113 Fiat Abarth, red with grey interior; mint in good plus box together with Tekno (Denmark) 812 Cooper Norton racing car; mint in good box (missing on flap) – 2 items  
**\$200 - \$300**

**760** Lone Star Rolls Royce Silver Cloud II together with a Rio (Italian) 1932 Alfa Romeo P3 single seater – 2 items  
**\$100 - \$200**

**761** Mixed lot of Siku (West Germany) and Joal (Spain) industrial and farming vehicles, tractors and bulldozers etc – 6 items  
**\$75 - \$125**

**762** Dinky 678 Air Sea Rescue Launch in good blister pack and base  
**\$50 - \$100**

**763** 5 unboxed Dinky Toys inc. Jaguar Mark 10, 165 Humber Hawk and 237 Mercedes Benz, 190 Caravan & 688 Field Artillery Tractor in good condition – 5 items  
**\$125 - \$175**

**764** 7 unboxed Dinky Toys inc. Massey Ferguson Tractor; Wheelbarrow, Disc Harrow, Dunlop sign & others  
**\$75 - \$125**

**765** 3 boxed Dinky toys inc. 340 Land Rover; 341 Land Rover Trailer & 251 Aveling – Barford Diesel Roller  
 Good to good plus in good boxes – 3 items  
**\$250 - \$350**

**766** Dinky Supertoys 661 Recovery Tractor  
 Mint in excellent box  
**\$125 - \$175**

**767** Dinky Supertoys 961 Blaw-Knox Bulldozer. Rare colour variation in pale yellow in good plus condition (perished tracks) in good plus box  
**\$75 - \$100**

**768** Dinky Toys metal display sign  
**\$75 - \$125**

**769** 4 boxed Dinky Toys inc. 259 Fire Engine, 278 Vauxhall Ambulance, 283 Single Decker Bus & 289 Routemaster Bus in excellent to mint condition in good to excellent boxes – 4 items  
**\$200 - \$300**

**770** 2 boxed Dinky sports cars inc. 235 Cooper-Bristol (rare variant with red plastic hubs) & 105 Triumph TR2 Sports (extremely rare variant in lemon with spun chrome hubs) in good condition in good plus boxes – 2 items  
**\$300 - \$400**

**771** Dinky 439 Ford D.800 Snow Plough  
 Near mint in excellent box  
**\$75 - \$125**

**772** 4 Boxed Dinky British saloons inc. 195 Jaguar 3.4 Saloon, 162 Triumph 1300, 135 Triumph 2000 with luggage & 256 Police Patrol Car in good to good plus condition in good boxes – 4 items  
**\$200 - \$300**

**773** 5 Boxed Dinky cars inc 128 Mercedes-Benz 600, 449 Chevrolet 'El Camino' Pick-Up Truck, 147 Cadillac 62, 195 Jaguar 3.4 Saloon & 184 Volvo 122S in good plus to mint condition in fair to excellent boxes – 5 items  
**\$400 - \$600**

**774** Dinky 196 Holden Special Sedan with boot luggage (turquoise variant)  
 Near mint in good box  
**\$200 - \$400**

**775** Mixed lot of Die-Cast toys inc. Spiderman's Bike, B.E.V Flat Truck and Trailer in blue and red, Dinky 475 Merry Christmas Model T Ford & empty Corgi junior Popeye Blister Pack  
 Fair to good condition  
**\$75 - \$125**



744

745



773



770



758



774



771



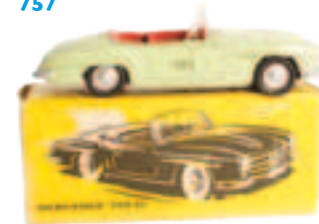
747



749



757



762



751



753



766



748



743



752



765



**776** 5 Matchbox Regular Wheels boxed Caravan and Trailer toys inc. 9 Cabin Cruiser, 38, Honda Motorcycle & Trailer, 43 Pony Trailer, 23 Trailer Caravan & 48 Trailer & Sports Boat – 5 items. Excellent to mint condition in excellent boxes  
**\$75 - \$125**

**777** 8 Matchbox Regular Wheels boxed American cars inc. 2 x 39 Pontiac Convertible in yellow and metallic purple variants, 42 Studebaker Wagon with hunting accessories, 75 Thunderbird, 59 Ford Galaxie Fire Chief Car & 54 Cadillac Ambulance – 8 items.  
Good plus to mint condition in good to excellent boxes  
**\$150 - \$300**

**778** 7 Matchbox Regular Wheels boxed British & European cars inc. 32 E Type Jaguar, 65 Jaguar 3.4 Saloon, 17 Taxi, 7 Ford Anglia, 25 Ford Cortina, 45, Ford Corsair with Boat & 34 Volkswagen Camper – 7 items  
Good plus to mint condition in good to mint boxes  
**\$125 - \$175**

**779** 14 Matchbox Regular Wheels boxed Trucks & Tractors etc inc. 54 Saracen Carrier, 69 Hatra Tractor Shovel, 58 Drott Excavator, 16 Scammel Snowplough, 47 DAF Container Truck, 24 Hydraulic Excavator, 11 Petrol Tanker, 72 Jeep, 2 x 49 Unimog in blue and yellow variants, 48 Dodge Dumper Truck, 21 Foden Concrete Truck, 18 Caterpillar Bulldozer & 70 Grit Spreading Truck – 14 items  
Good Plus to mint condition in good to excellent plus boxes  
**\$250 - \$400**

**780** 6 Matchbox Regular Wheels boxed Coaches and Buses inc. 5 Routemaster, 56 Trolley Bus, 68 Mercedes Coach, 40 Long Distance Coach & 74 x 2 Daimler Bus in white and Green variants – 6 items  
Good Plus to mint condition in fair to excellent boxes  
**\$75 - \$125**

**781** 6 Matchbox Regular Wheels lorries inc. 20 Transport Truck, 51 Albion Chieftain, 10 Sugar Container, 4 Stake Truck, 25 B.P. Truck, 25 BP Tanker & 1 Mercedes Truck –

6 items. Good Plus to mint condition in good to excellent boxes  
**\$75 - \$125**

**782** 9 Matchbox Regular Wheels Vans & Pickups inc. 47 Lyons Maid Ice-Cream Mobile Shop, 60 Morris J2 Pick-Up, 21 Milk Delivery Truck, 37 Coca-Cola Lorry, 42 Evening News Van, 69 Nestle Van, 35 Horse Box, 50 Commer Pick Up & 46 Pickfords Removal Van – 9 items  
**\$125 - \$175**

**783** 8 Matchbox Superfast inc. 2 x 50 Articulated Truck, 41 Siva Spyder, 20 Lamborghini Marzal, 17 The Londoner Bus, 15 Fork Lift Truck, 2 Jeep Hot Rod & 56 Hi-Tailer – 8 items  
Good Plus to mint in good plus to excellent boxes  
**\$100 - \$150**

**784** 4 Superfast Sports cars inc. 45 Ford Group 6, 20 Lamborghini Marzal, 68 Porsche 910 & 22 Freeman Intercity Commuter – 4 items  
Good Plus to mint in good plus to excellent boxes  
**\$50 - \$100**

**785** 6 Superfast Trucks & pickups inc. 51 8 Wheel Tipper, 61 Alvis Stalwart, 6 Ford Pick Up, 49 Unimog, 44 Refrigerator Truck & 26 GMC Tipper Truck – 6 items  
Good Plus to mint in good plus to excellent boxes  
**\$75 - \$125**

**786** 7 later ( 70s – 80s) Superfast Cars inc. 52 BMW M1, 67 Datsun 260-Z, 21 Renault 5TL, 2 x 27 Lamborghini, 7 VW Golf & 51 Pontiac Firebird SE – 7 items. Good Plus to mint in good plus to excellent boxes  
**\$75 - \$125**

**787** 6 later ( 70s – 80s) Superfast trains etc inc. 31 Caravan, 25 Flat Car assenger Coach, 48 Sambron Jacklift & 74 Toe Joe in odd pack – 6 items  
Good Plus to mint in good plus to excellent boxes  
**\$50 - \$100**

**788** 8 later ( 70s – 80s) Superfast trucks & buses etc inc. 2 x 65 Airport Coach, 42 Mercedes Container Truck, 54 Mobile Home, 49 Crane Truck, 71 Cattle Truck, 36 Refuse Truck & 37 Skip Truck – 8 items  
Good Plus to mint in good plus to excellent boxes  
**\$75 - \$125**

**789** 2 Matchbox King Size K-5 Foden Dumper Truck in yellow with red hubs & K-13 Erf Concrete Truck in Orange with metal hubs – 2 items. Good to mint condition in good to mint boxes  
**\$125 - \$175**

**790** Matchbox King Size K-10 Aveling-Barford Tractor Shovel in sea green with red hubs  
Mint condition in excellent box  
**\$100 - \$200**

**791** Matchbox King Size K-2 KW Dart Dump Truck in yellow with red hubs  
Mint condition in excellent box and pull-out sleeve  
**\$75 - \$150**

**792** Matchbox King Size K-11 Fordson Tractor and Farm Trailer in Blue & Grey  
Good Plus condition in good plus box  
**\$50 - \$75**

**793** Matchbox King Size K-12 Foden Heavy Breakdown Wreck Truck in green and yellow  
Near mint in excellent box  
**\$75 - \$100**

**794** 4 Matchbox Regular Wheels sports cars inc. 52 Maserati in yellow, 53 Mercedes Benz Coupe, 73 Ferrari Racing Car & 41 Jaguar Racing Car – 4 items  
Good to near mint condition in good to excellent boxes  
**\$75 - \$125**

**795** 5 Matchbox Regular Wheels vans & trucks etc inc. 9 Fire Truck, 23 Caravan Trailer, 24 Hydraulic Excavator, 70 Thames Estate Car & 72 Fordson Tractor – 5 items.  
Good to near mint condition in good to excellent boxes  
**\$75 - \$125**

**796** 6 Matchbox Regular Wheels sedans & pick up inc. 44 Rolls Silver Cloud, 27 Cadillac Sedan, 71 Jeep Gladiator, 55 Police Patrol Car, 31 Ford Station Wagon & 29 Austin Cambridge – 6 items. Excellent to mint condition in good plus to excellent boxes  
**\$100 - \$150**

**797** 6 Matchbox Regular Wheels sports cars inc. 19 Lotus Racing Car, 75 Ferrari Berlinetta, 14 Iso Grifo, 27 Mercedes Benz 230SL & 62 Mercury Cougar – 6 items  
Excellent to mint condition in good plus to excellent boxes  
**\$100 - \$150**

**798** 6 Matchbox Regular Wheels trucks etc inc. 11 Scaffolding Truck, 51 8 Wheel Tipper, 30 8 Wheel Crane, 10 Pipe Truck with pipes on sprue & 63 Dodge Crane Truck – 6 items  
Excellent to mint condition in good plus to excellent boxes  
**\$100 - \$150**

**799** 7 Matchbox Regular Wheels sedans inc. 20 Taxi Cab, 36 Opel Diplomat, 73 Mercury Wagon, 53 Ford Zodiac, 24 Rolls Royce Silver Shadow, 44 Rolls Royce Phantom V & 28 Mark Ten Jaguar – 7 items  
Excellent to mint condition in good to excellent boxes  
**\$150 - \$200**

**800** 4 Matchbox Regular Wheels trailers etc inc. 51 Trailer with barrels, 60 Truck with site office, 40 Hay Trailer & 2 Mercedes Trailer – 4 items  
Excellent to mint condition in good plus to excellent boxes  
**\$100 - \$150**

**801** Matchbox Major Pack M-2 Articulated Freight Truck in silver and maroon. Mint condition in good plus box  
**\$50 - \$75**

**802** Matchbox Major Pack M-8 Guy Warrior Car Transporter in turquoise and orange with orange hubs.  
Near mint condition in excellent box and pull out tray  
**\$75 - \$125**



802



784



796



795



794



792



777



793



803



797



791



781



782



798



790



**803** Matchbox Major Pack M-3 Thorneycroft Antar Low Loader with Centurion Tank - military green, black plastic wheels, metal rollers with grey rubber tracks in excellent condition Near Mint in good plus box – a superior example

**\$125 - \$175**

**804** Matchbox Major Pack M-7 Jennings Cattle Truck in red and light tan Mint in excellent box

**\$75 - \$125**

**805** Matchbox Major Pack M-6 Scammell 6 x 6 Ballast Tractor with "Pickfords" Low Loader Trailer in bright blue with red load. Near mint in excellent box – a superior example

**\$100 - \$200**

**806** Matchbox Major Pack M-9 Hendrickson Tractor Unit with "Cooper Jarrett" Interstate Double Freighter Trailers - blue cab and bogie, silver trailers with yellow and blue lettering, black plastic wheels. Mint in excellent plus box – a superior example

**\$200 - \$300**

**807** 4 Siku Super Series Diggers and Trucks inc. Road Maintenance Lorry, Digger, Gully Emptier & Wheel Loader – 4 items. Mint in good plus boxes

**\$75 - \$150**

**808** 3 Corgi Classics boxed cars and bus inc. Volvo 760 Turbo Saloon, 1910 12 B Coach – 3 Items

Mint in Good Plus boxes

**\$50 - \$75**

**809** Matchbox Models of Yesteryear Y-10 1908 Mercedes Grand Prix 2 seater in cream with green seating – rare superdetailed example

Near mint in excellent early carded box

**\$100 - \$200**

**810** 3 Matchbox Models of Yesteryear - early examples (pre-Y numbering) inc. No 4 Sentinel Steam Wagon in blue with metal wheels, No 7 Four Ton Leyland in red and cream with metal wheels & No 2 B Type Bus in red with all decals intact with metal wheels - 3 items. Near mint

to mint in good plus to excellent carded boxes – superior early examples

**\$150 - \$250**

**811** 4 Matchbox Models of Yesteryear inc. Y-15 Rolls Royce Silver Ghost, Y-12 Horse Bus, Y-3 E Class Tram Car & Y-10 1908 Mercedes Grand Prix 2 seater – 4 items. Near mint to mint in good plus to excellent carded boxes

**\$75 - \$150**

**812** 4 Matchbox Models of Yesteryear inc. Y-7 1913 Mercer Raceabout, Y-16 Spyker Veteran, Y-2 1911 Renault & Y-10 1928 Mercedes 2 seater – 4 items. Good Plus to mint in good plus carded boxes

**\$50 - \$75**

**813** 7 Matchbox Models of Yesteryear inc. Y-4 1909 Opel Coupe, Y-10 1928 Mercedes 2 seater, Y-16 Spyker Tourer, Y-15 Rolls Royce Silver Ghost, Y-14 1911 Maxwell Roadster & 2 x Y-5 1929 Bentley Blower – 7 items. Good to mint condition in fair to good plus carded boxes

**\$75 - \$125**

**814** 9 Matchbox Models of Yesteryear inc. Y-10 1908 Rolls Royce Silver Ghost, Y-14 1911 Maxwell Roadster, Y-6 1913 Cadillac, Y-4 1909 Opel Coupe, Y-9 1912 Simplex, 2 x Y-8 1914 Stutz & 2 x Y-5 1907 Peugeot – 9 items. Excellent to mint condition in fair to good plus cellophane window boxes

**\$100 - \$175**

**815** 7 Matchbox Models of Yesteryear inc. Y-5 1927 Talbot Van, Y-17 Hispano Suiza, 2 x Y-15 1930 Packard Victoria, Y-29 Walker Electric Van in Harrods Livery, Y-10 Rolls Royce Silver Ghost, Y-5 1907 Peugeot – 7 items. Excellent to mint condition in fair to good plus cellophane window boxes

**\$75 - \$125**

**816** 7 Matchbox Models of Yesteryear vans & trucks inc. Y-21 1930 Ford A, 2 x Y-12-22 1930 Ford A in Maggi livery, 2 x Y-12 1922 Ford Model T in different livery & Y-3 1912 Ford T Mobil Oil – 7 items. Mint Condition in good plus cellophane window boxes

**\$75 - \$125**

**817** 11 Matchbox Models of Yesteryear vans and cars inc 2 x Y-19 1933 Auburn, 2 x Y-21 1927 Ford A, Y-2 Prince Henry Vauxhall, Y-14 1931 Stutz Bearcat, Y-11 1938 Lagonda, Y-16 1928 Mercedes SS, Y-18 1937 Cord 812, Y-4 1930 Model J Duesenberg & Y-9 Simplex-50. 9 items. Excellent to mint condition in fair to good plus cellophane window boxes

**\$125 - \$200**

**818** Mixed lot of 5 Matchbox Models of Yesteryear and 4 others inc. 2 x Y-12 1912 Model T Ford, Y-19 Morris Cowley Van, Y-12 Model T Ford Low Sided Truck, Y-22 1930 Model A Ford Van, Days Gone 1950 Weetbix Delivery van, Days Gone 1937 Scammell Marmite Delivery van, Exclusive First Editions Start Rite 6 wheel Lorry, Lledo 1920 Model T Ford Cadbury Milk Tanker – 9 items

Excellent to mint condition in fair to good plus cellophane window boxes

**\$100 - \$150**

**819** Matchbox Accessory Pack No 4 Roadsigns 8 x metal signs in black and red with individual signs – extremely rare

Mint condition in good plus box

**\$100 - \$200**

**820** Matchbox Accessory Pack No A1 Esso Petrol Pump set in red and white with off white sign

Good plus condition

**\$50 - \$100**

**821** 6 Matchbox Models of Yesteryear inc. Y-19 1905 Fowler Showmans Engine, Y-2 1930 Supercharged Bentley, Y-24 1927 Bugatti T44, Y-15 1930 Packard Victoria, & Y-27 Foden C Type Steam Wagon and Trailer & YS SE- 39 Passenger Coach & Horses – 6 items

excellent condition in good boxes

**\$50 - \$75**

**822** 23 Matchbox military vehicles inc. regular wheels and superfast Jeeps, Tanks, Transports, Motorbike, hovercraft, Bull dozer, Water Truck, Unimog, Ambulance etc – 23 items. Unboxed in good plus to near mint condition.

**\$200 - \$300**

**823** Matchbox SuperKings Ford Articulated US Army Petrol Tanker in Military Livery – Rare Issue

Unboxed in excellent condition

**\$75 - \$125**

**824** Matchbox Lesney Horsedrawn Covered Wagon, green, white, 6 x brown horses (with one outrider) – Unboxed in Good Plus to Excellent condition

**\$75 - \$125**

**825** 2 Matchbox Models of Yesteryear WWI Crossley RAF Ambulance & Renault Red Cross Ambulance – Rare Issues – 2 Items. Unboxed in excellent condition

**\$50 - \$100**

**826** 3 Matchbox Regular Wheels truck inc. Mobil Gas Thorneycroft Tanker, BP Autotanker, Walls Ice Cream Bedford Articulated & Models of Yesteryear Y-6 AEC Y type Lorry 'Osram Lamps' with crimped axle – 4 items – rare issues. Unboxed in good plus to near mint condition

**\$150 - \$200**

**827** 4 Matchbox blister pack sets inc. 2 x Mega Blaster Cap Cars, Super Charger Monster Truck & 4 car Speed Stick Customizing set. Excellent to mint in fair to excellent blister packs

**\$75 - \$150**

**828** 10 Matchbox blister pack cars inc. Chevy Van, BMW M1, School Bus, Renault, IMSA Mazda & others – 10 items. Mint in good plus to excellent blister packs

**\$75 - \$150**

**829** 11 Matchbox blister pack cars inc. Car Transporter, Chevy Blazer, Ambulance, Nasa Tracking Vehicle, Buick Le Sabre, Porsche 911 & others – 11 items. Mint in good plus to excellent blister packs

**\$75 - \$150**





826



837



809



810



804



803



853



838



805



835



819



856



839



857



836



834



806



**830** 11 Matchbox & Dinky cars inc. Dinky Jaguar E-Type in BRG, Matchbox Toyota, Celica, Mazda RX 7, Code Red LAPD Motorcycle & others – 11 items

**\$100 - \$150**

**831** 4 Matchbox King Size, Speed Kings & Super Kings inc. K-1 Hydraulic Excavator; K-1 Foden Tipper Truck, K-61 Mercedes Police Car & K-22 Hovercraft  
Mint in good Plus to excellent cellophane fronted carded boxes

**\$75 - \$150**

**832** Matchbox Super Kings Large Trucks inc. K-3 Grain Transporter; Peterbilt Refrigeration Truck, K-43 Log Transporter & K-39 Snorkel Fire Engine  
Near Mint to Mint in fair to good plus cellophane fronted carded boxes

**\$125 - \$175**

**833** Matchbox Super Kings Commercial vehicles inc. K-41 JCB Excavator; K-32 Farm Unimog, K-87 Tractor and Rotary Rake & K-33. Cargo Hauler. Near mint to mint in good to good plus cellophane fronted carded boxes.

**\$100 - \$150**

**834** Matchbox Car Ferry Giftbox G-17 without cars – extremely rare red on red variant. Near mint in excellent carded box – superb example

**\$125 - \$200**

**835** Matchbox Accessory Pack No 5 Home Stores – extremely rare.  
Near mint in good early carded box – superb example

**\$150 - \$250**

**836** Matchbox G-6 Truck Set of 8 various Regular Wheels Trucks  
Mint in Excellent box – superb example

**\$250 - \$350**

**837** Matchbox King Size K-4 GMC Fruehauf Hopper Train - red including plastic hubs with black tyres, silver hoppers with correct K4 baseplates. Near mint in excellent plus cellophane fronted carded box – superb example

**\$100 - \$200**

**838** Matchbox Models of Yesteryear G-7 Gift Set containing No.Y3 E Class Tram Car 'News of the World' in red with white roof, black base and plastic rollers & grey lifeguards, Y-4 Shand Mason Horsesdrawn Fire Engine 'London Fire Brigade' in red with black horses & bare metal boiler - all figures present, Y-12 Horsesdrawn Bus "Liptons Tea" in red & black with brown horses, Y-11 Aveling and Porter Steam Roller in green, red with gold trim and Y-13 Santa Fe Locomotive in green & maroon conditions are generally Excellent to Near Mint, inner carded tray is good plus although requires a little cleaning and outer picture box is Good to Good Plus – superb and rare example

**\$250 - \$400**

**839** Matchbox Regular Wheels G-9 BP Service Station gift set comprising of No MGI Matchbox Sales & Service Station BP - white buildings, green base, yellow and white sign, complete with No A1 Accessory Pack containing Petrol Pumps and Sign – does not include vehicles  
Good Plus to excellent condition in fair carded box

**\$100 - \$200**

**840** Matchbox Accessory Pack No MFI Fire Station with grey base, white and red building. Excellent condition in good carded picture box

**\$100 - \$200**

**841** 6 Matchbox Commercials in Branded OZ Ford Van, Pepsi Panel Truck, Mitre 10 truck & Van – 6 items  
Mint in blister and carded packs

**\$200 - \$300**

**842** 9 Matchbox Trucks & Cars inc. 4 x various Convoy American Trucks, 1981 Royal Wedding Bus & 4 x cars – 9 items  
Good plus to mint condition in cellophane fronted carded boxes

**\$100 - \$200**

**843** Matchbox Sea Kings K-309 Submarine. Mint in good plus cellophane fronted carded box

**\$50 - \$100**

**844** Matchbox Collector Series Australia Post set inc. 4 x Delivery vans

of various eras, Container Truck & post box together with Australia Post Collector Model No 3 South Australian Posting Box Type 8 – 2 items. Mint in cellophane fronted carded boxes

**\$75 - \$150**

**845** 4 Lledo Die-Cast Coca-Cola Themed Delivery vans – 4 items  
Mint in near mint boxes

**\$75 - \$150**

**846** 4 Lledo Die-Cast Coca-Cola Themed Delivery vans inc. VW Kombi – 4 items. Mint in near mint boxes

**\$75 - \$150**

**847** Arcade (American) Cast Iron Threshing Machine L.260mm, circa 1910 with later additions  
Fair condition

**\$75 - \$150**

**848** 3 Corgi Trucks inc. BP Tanker; Car Transporter & Mars Brand Container Truck – 3 items  
Near Mint in excellent carded boxes

**\$75 - \$150**

**849** Matchbox Superfast Collectors Carrying Case with approx 40 mostly Superfast Matchbox toys – 40 plus items  
Varying conditions from fair to good plus

**\$200 - \$300**

**850** 3 Die-Cast Toys inc. unboxed Matchbox Racing Car Transporter in green, boxed Matchbox Super Kings K-25 Digger & Plough in orange & Siku Crane Truck in yellow – 3 items. Good plus condition

**\$75 - \$125**

**851** 6 Ertl (Iowa USA) John Deere Farm Toys inc. Tractor; Bobcat, Haybailer; Trailers etc & 4 John Deere Toys colour catalogues – 10 items. Good condition

**\$100 - \$150**

**852** 3 Corgi Toys inc. American La France Aerial Ladder Truck, Bedford O Series Pantechon & 1929 Thorneycroft Van – 3 items. Mint in good plus boxes

**\$100 - \$150**

**853** Matchbox Models of Yesteryear Y-12 1912 Ford Model T in Sunlight livery

– rare issue. Mint in good cellophane fronted carded box

**\$75 - \$150**

**854** No lot

**855** No lot

**856** Matchbox Models of Yesteryear Y-3 1912 Ford Model T in Zerolene Standard oil livery – rare issue  
Mint in good plus cellophane fronted carded box

**\$75 - \$150**

**857** Matchbox Models of Yesteryear Y-12 1912 Ford Model T in Coca-Cola livery – rare issue. Mint in good cellophane fronted carded box

**\$75 - \$150**

**858** Matchbox Models of Yesteryear Y-12 1912 Ford Model T in Arnott's Biscuits Livery – rare issue. Mint in good cellophane fronted carded box

**\$75 - \$150**

**859** 5 Matchbox Models of Yesteryear Y-12 1912 Ford Model Ts in various commercial liveries inc. Smiths Crisps, Harrods, Suze, Hoover & Colman's Mustard – 5 items

Mint in good plus cellophane fronted carded boxes

**\$75 - \$150**

**860** 4 Matchbox Models of Yesteryear Y-12 1912 Ford Model T in various commercial liveries inc. Pepsi Cola, 25 Years of Models of Yesteryear; Captain Morgan Rum & Cerebos Table Salt – 4 items. Mint in good cellophane fronted carded boxes

**\$60 - \$125**

**861** 4 Matchbox Models of Yesteryear Y-13 1918 Crossley Coal & Coke, Y-29 Harrods Walker Electric Van & 2 x Y-5 1927 Talbot – Nestle Milk & Taystee Bread – 4 items. Mint in good cellophane fronted carded boxes

**\$60 - \$125**



**858**



**862** 4 Matchbox Models of Yesteryear Y-16 Mercedes SS, 2 x Y-20 Mercedes 540K & Y-11 1938 Lagonda  
Mint in good cellophane fronted carded boxes – 4 items  
**\$60 - \$125**

**863** 14 Matchbox Models of Yesteryear inc. 3 x Y-12 1912 Ford Model T – Motor 100, Rosella & Heinz, 2 x Y-3 1912 Model T Tanker – Castrol & Red Crown Gasoline, 2 x Y-22 Ford Model A Van - Spratt's, Y-7 1930 Ford Model A Wreck Truck, Y-15 Preston Tramcar, Y-27 1922 Foden Steam Lorry – Pickford's, Y-25 1910 Renault – Red Cross, Y-21 1930 Model A Ford – Barters, Y-30 1920 Model AC Mack – Acorn Storage & Y-18 1918 Atkinson Steam Wagon – Portland Cement – 14 items. Mint in good cellophane fronted carded boxes  
**\$150 - \$200**

**864** 6 Matchbox Australian themed Limited Edition Trucks inc. 2 x Australia Post Ford Transit, Bonds Ford A Van, Big Sister Ford A Van, P.M.G. Ford A Van & Airport Coach – circa 1981 – 6 items  
Mint in good cellophane carded boxes  
**\$75 - \$125**

**865** 14 Corgi Toys Small Cars & Trucks inc. 2 x Landrover, 3 x AA Wrecker, 3 x Jaguar, Refuse Truck, Police 2 x Buick, 2 x Ferrari & BMW – 1991 – 14 items  
Mint in good plus cellophane fronted carded boxes  
**\$125 - \$175**

**866** 6 Corgi Trucks inc. 2 x Car Transporter, 2 x Tanker & 2 x Container truck – circa 1990. Mint in excellent carded boxes  
**\$100 - \$150**

**867** Corgi D37 commemorative Pack with 5 vehicles (1988) – 2 items  
Mint in good plus carded boxes  
**\$75 - \$125**

**868** 6 Empty Matchbox carded boxes - Regular wheels Military Vehicles inc. 67, 64, 63, 61, 54 & 49 – 6 items  
Fair to good plus condition  
**\$50 - \$100**

**869** 11 Empty Matchbox carded boxes – various Superfast inc. 20, 66, 33, 14, 42, 20, 69, 73, 70, 31 & 67 – 11 items  
Fair to Good Plus condition  
**\$75 - \$125**

**870** 6 Empty Matchbox carded boxes – Early & Regular Wheels vehicles inc. 47, 1, 39, 22 & A Moko 68 & 73 – 5 items  
Fair to good condition  
**\$40 - \$60**

**871** 10 Empty Matchbox carded boxes – Late 1970s Superfast inc. 2 x 54, 50, 1, 5, 65, 31, 30, 48, 62 & 65 – 10 items  
Good Plus condition  
**\$75 - \$125**

**872** 5 Unboxed Matchbox Heavy Rollers inc. King Size No 9 Aveling Barford Road Roller & 4 other rollers from various eras – fascinating to see product variations – 5 items. Fair to excellent condition  
**\$50 - \$100**

**873** 7 Unboxed Matchbox Vans – early Regular Wheels inc. 59 Singer Ford Thames Van, 46 Pickfords Removal Van, 21 Luxury Coach, Brooke Bond Tea 1 Ton Trojan Van, 34 Volkswagen Kombi Van, Lomas Ambulance, 62 Rentaset van  
Good to good plus condition  
**\$150 - \$250**

**874** 10 Unboxed Matchbox – early Regular Wheels inc. 28 Thames Trader, 27 Coca Cola 2 Ton Bantam Karrier, 15 Tippax Refuse Collector, Fire Tender with Ladder, Players London Bus, Erf Cement Mixer, Tow Truck, Cement mixer in blue and orange, 2 Tip Truck in green and red & Lipton's Tea Horse Drawn Bus – 10 items  
Fair to good plus condition  
**\$150 - \$250**

**875** 3 Unboxed Matchbox Fire Engines – early Regular Wheels inc. 29 Fire Pumper Truck, 63 Foamite Crash Tender & 9 Merriweather Fire Engine – 3 items  
Good plus condition  
**\$50 - \$100**

**876** 10 Unboxed Matchbox Diggers, Cranes & Tractors – early Regular Wheels inc. Combine Harvester, 39 Ford Tractor, 50 Tractor in green, 8 Caterpillar Tractor,

16 Case Tractor, 43 Aveling Barford Tractor Shovel in yellow, Roston- Bucyrus Mechanical Digger, 2 x 11 Taylor Jumbo Crane & 42 Iron Fairy Crane – 10 items  
Good condition  
**\$150 - \$250**

**877** 3 Unboxed Matchbox Motorcycles – early Regular Wheels inc. 4 Triumph with pillion in metallic pale blue, 36 Lambretta with pillion & MOY 1914 Sunbeam & pillion – 3 items. Good condition  
**\$200 - \$300**

**878** 8 Unboxed Matchbox Trucks etc – early Regular Wheels inc. 6 Euclid Dump Truck, 48 Meteor Sport Boat & trailer, 61 BP Alvis Stalwart, 32 Leyland Petrol Tanker, 6 Tip Truck in yellow, Farm Trailer in blue, 29 Dump Truck in orange & 17 Hoveringham Tipper – 8 items  
Good to good plus condition  
**\$100 - \$150**

**879** 7 Unboxed Matchbox sedans etc – early Regular Wheels inc. 31 Lincoln Continental, 2 x 46 Mercedes 300SE in green and metallic blue, 66 Citroen DS 19, 33 Ford Zephyr 6, 3 Mercedes Benz Ambulance & 23 Trailer Caravan – 7 items.  
Fair to good plus condition  
**\$75 - \$125**

**880** 10 Unboxed Matchbox Sedans & Sports Cars– early Regular Wheels inc. Vauxhaul Cresta in pink & grey 46 Morris Minor 1000, 33 Ford Zodiac in metallic grey & orange, 38 Vauxhall Victor Estate Car, 39 Ford Zodiac Convertible, 32 Jaguar XK140 in scarlet, 53 Aston Martin, 45 Vauxhall Victor in pale yellow, 44 Rolls Royce Phantom V & 65 Jaguar 3.4 Litre – 10 items. Good plus condition  
**\$150 - \$250**

**881** Matchbox Volkswagens – early Regular Wheels & Superfast inc. 3 x unboxed Beetles in metallic blue, white and metallic burnt orange (note: 1 example each of 1968 issues as Regular and Superfast), 2 x VW Kombi Campers in metallic grey and pale green & one boxed Superfast Beetle 1500 – 6 items  
Good to near mint condition  
**\$100 - \$150**

**882** 5 Matchbox Regular Wheels truck inc. 74 Mobile Canteen in pale metallic blue, 30 Marquis Deutz Crane Truck in silver, 2 Muir-Hill Dumper Truck, 66 Harley-Davidson in metallic copper & 26 Foden Cement Mixer in orange – 5 items inc. rare issues. Good to mint condition in fair boxes  
**\$125 - \$200**

**883** 7 Matchbox Regular Wheels truck inc. boxed 58 DAF Girder Truck, 44 Refrigerator Truck, 71 Ford Heavy Wreck Truck, 19 Aston Martin DBR 5 in metallic green & unboxed 52 BRM racer in blue, 13 Superfast Dodge Wreck Truck & 57 Superfast land Rover Fire Engine – 7 items. Good to mint condition in fair to excellent boxes  
**\$125 - \$200**

**884** 7 Matchbox King Size Trucks & Tractors inc. Hatra Tractor Shovel in orange, K-7 Curtiss Wright Rear Dumper in yellow, Massey – Ferguson Combine Harvester in red, McCormick International Tractor in red, 74 Mobile Canteen in pale metallic blue, SuperKings Massey Ferguson Tractor in red with white cab with Trailer & 6 plastic haybales, Small Garage in yellow from Accessory Pack No 3, Super Kings Ford Refrigerated 'Polara' articulated truck & trailer & one older Charbens Field Tractor in orange with metal wheels & driver in grey – 7 items. Good Plus to excellent plus condition  
**\$125 - \$200**

**885** 12 Lledo Trucks inc. 8 x various Ford Delivery vans in Cadbury livery, 2 x Johnsonville Volunteer Fire Brigade Fire Tenders, Esso Tanker with figures & Ovaltine Van with figures – 12 items  
Mint in cellophane carded boxes  
**\$100 - \$150**

**886** 12 Matchbox Walt Disney Cars & Figures circa 1979 inc. Minnie, Jiminy Cricket, Donald Duck, Mickey Mouse, Goofy & the gang in all different variants – 12 items. Mint in excellent blister packs  
**\$400 - \$500**

**887** 10 Matchbox, Fischer Price & Hasbro Walt Disney & Snoopy Die-Cast Cars & Figures inc. Mickey, Goofy, Popeye, Olive Oyl, Snoopy etc & one Ertl Dick Tracy Car – 10 items

Mint in excellent blister packs

**\$75 - \$125**

**888** 8 Matchbox Thunderbirds & Ertl Batman Die Cast Figures inc. The Penguin, Catwoman, The Penguins Duck, Penguin Commando, Batmobile, Thunderbird 1 and 3 & Captain Scarlet's Car – 8 items

Mint in Excellent blister packs

**\$75 - \$125**

**889** 9 Ertl Die-Cast Thomas the Tank Engine toys - late 1980s to mid 1990s inc. Thomas, Edward, Toad, Percy, Annie & Carabel, James, 199 Diesel & 2 x track and loco packs – 9 items. Mint in excellent blister packs

**\$100 - \$150**

**890** Ertl Die-Cast Thomas the Tank Engine Gift pack of 6 toys

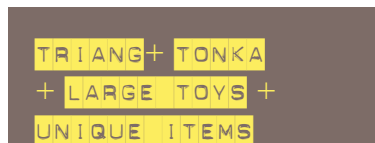
Mint in carded box with blister inner

**\$50 - \$100**

**891** Mixed lot inc. Snoopy Die-Cast figure & Rupert the Bear pack & Disney Beagle Boys figure

Mint in good plus boxes

**\$50 - \$100**



**892** Austin J40 Pedal Car in red with red interior & white piping with red wheel rims, brightwork in excellent condition inc. rare Flying A bonnet mascot, original dashboard & steering wheel with replacement tyres – missing bumpers

**\$2000 - \$3000**

**893** Wooden Carousel Horse 'Pride' - Victorian or Edwardian era with decorative saddle and halter – formerly Carousel Antiques Shop Mascot from 1987 to 1998 – a genuine and rare fairground item in excellent condition

**\$3000 - \$5000**

**894** Wooden Lion - fixed carousel ride – Victorian or Edwardian era restored in facsimile of original design & colour in 1990

**\$800 - \$1500**

**895** Carved Carousel Headboard used for hanging ornamentation, W.1510mm, early 20th century in relief floral and cornucopia design with central diamond shaped mirror

**\$300 - \$500**

**896** Possibly German Palitoy Brand Tin Rocking Horse H.840mm. Fair Condition

**\$150 - \$250**

**897** New Zealand Made Cane Doll's Pram – Superior Pram Co. Wanganui in cream with pale lime interior & leather suspension. Good condition

**\$75 - \$150**

**898** New Zealand Made Cane Doll's Baby Buggy – Superior Pram Co. Wanganui in cream & spring suspension

**\$75 - \$150**

**899** Triang Fire Engine L. 390mm in red & Yellow

**\$50 - \$100**

**900** Triang 'Puff Puff' large pressed steel pushalong Locomotive L. 440mm in red, with black trim

**\$50 - \$100**

**901** Triang Breakdown Truck L. 560mm in red

**\$50 - \$100**

**902** 2 Triang Tip Trucks L. 490mm, one in pale blue & red and one repainted in Carousel Antiques livery with wooden tray

**\$100 - \$200**

**903** Triang London Bus L. 560mm repainted in brilliant red with white and pale blue interior

**\$75 - \$125**

**904** Triang Racing Yacht. L. 490mm with green tin hull black topsides with gold piping, rare gaff rig model with intact rigging

**\$100 - \$150**

**905** Tonka Tip Truck L. 360mm in yellow

**\$50 - \$100**

**906** 3 Tonka Toys inc. Bulldozer L. 300mm, Grader L. 430mm & 728 Large Digger L. 570mm - 3 items all in yellow

**\$150 - \$200**

**907** 4 Small Tonka Toys inc. Hot Rod in black & red, grader in yellow, digger in orange & VW Beetle in red.

**\$30 - \$50**

**908** Metal Bucket & Spade 'Mary Had a Little Lamb'

**\$25 - \$50**

**909** Chad Valley Pastry Set comprising Rolling Pin, Scales, jelly moulds, ceramic bowl, breadboard etc

Near mint in good plus carded & illustrated box

**\$75 - \$150**

**910** 4 Circa 1930s Puzzles inc. The Lucky Ringtail Cat Puzzle, a box of 12 wooden dice jigsaw scenes & 2 x circular hand puzzles

**\$50 - \$100**





893



892



## DOLLS + TEDDY BEARS

**911** New Zealand made Baby Doll – New Zealand Plastic Products (Hamilton) L.500mm, circa 1950s, head, hands and legs in composition - with rag body and cotton clothes & woollen bonnet  
**\$125 - \$250**

**912** New Zealand made Plush Musical Teddy Bear – Pedigree Brand (with label) L.470mm, circa 1950s with jointed arms, legs & head complete with glass eyes, red bow & windup lullaby – plays 'Mary Had a Little Lamb'  
**\$125 - \$175**

**913** Small Plush Teddy Bear – Brand Unknown L.400mm, circa 1950s with glass eyes, jointed limbs, leatherette paws & purple bow  
**\$125 - \$175**

**914** Plush Teddy Bear – Brand Unknown L.500mm, circa 1960s with glass eyes, jointed limbs, leatherette paws - excellent condition  
**\$175 - \$225**

**915** Plush Teddy Bear – Brand Unknown L.520mm, circa 1950s with jointed limbs, glass eyes & leatherette paws  
**\$175 - \$250**

**916** New Zealand made Kraft promotion toys – Ches N Dale in felt and cotton & polyester  
**\$50 - \$100**

**917** 2 x BP Green Promotional Teddies  
**\$20 - \$40**



921

**918** Kiwi Kea Made for NZ 1990 sesquicentennial celebrations with badge and original tag  
**\$100 - \$200**

**919** English Made Cascelloid Baby Doll L.310mm circa 1930s with jointed limbs and cotton and woollen clothes  
**\$100 - \$200**

**920** New Zealand made WWII Nurse Doll – New Zealand Plastic Products (Hamilton) L.480mm, circa 1940s, head, hands and legs in composition - with original nurse's uniform  
Head in good plus condition, some deterioration to legs- rare example  
**\$250 - \$400**

**921** German Made Porcelain Dolls Head – Heubach. Koppelsdorf brand No. 320-9, stamped on rear – H.170mm, circa 1920s with brown eyes, delicate painted features and blushing complexion  
Excellent condition  
**\$100 - \$200**

**922** 2 Celluloid small infant dolls with original clothing – pre WWII  
**\$50 - \$100**

**923** 8 Small dolls inc. one black and one Kewpie  
**\$50 - \$80**

**924** New Zealand Made Infant Girl Doll – Pedigree Brand embossed on back, L. 250mm, circa 1950s with jointed limbs, sleeping eyes and stylized red hair  
**\$40 - \$80**

**925** French Made Porcelain Bisque Doll & Stand of young Girl - SFBJ Brand No 60 impressed on neck, L.490mm, circa 1920s with sleeping blue eyes, composition body & jointed limbs with white gown, bonnet & underclothes  
**\$500 - \$100**

**926** New Zealand Made Hard Plastic Black Boy Doll – Pedigree Brand, L.530mm, circa 1960s  
**\$350 - \$500**

**927** New Zealand Made Hard Plastic Black Girl Doll – Pedigree Brand, L.530mm, circa 1960s with bead necklace & hoop earrings  
**\$350 - \$500**

**928** Topsy Doll in Hard Plastic with sleeping eyes, L. 280mm, circa 1960s with woollen bonnet, boots & gown  
**\$30 - \$50**

**929** Japanese Celluloid Clockwork Popeye Doll, L.220mm, circa 1929 with blue vest & grey trousers in vibrant colour; tattoos well indicated – internal mechanism may be damaged  
Good Plus condition – rare example  
**\$175 - \$300**

**930** Large Hard Plastic Baby Doll, L.450mm, circa 1960s with sleeping eyes and later gown  
**\$100 - \$150**

**931** Modern Porcelain Doll of Country Girl figure, 450mm, circa 1980s  
**\$50 - \$100**

**932** Swiss Made Sasha Baby Porcelain Doll in 'Moses' basket, 360mm, circa 1975 with original tag and sales brochure  
Near mint condition  
**\$30 - \$60**

**933** English Made Cloth Doll – Nora Wellings Brand (label to sole of foot), L.225mm, circa 1940s in sailor costume with sailor cap printed MV Rangitata  
**\$100 - \$150**

**934** 3 Large Baby Dolls – 2 x Celluloid and one Hard Plastic Lengths vary from 490mm to 640mm  
**\$250 - \$350**

**935** Celluloid Humpty Dumpty figure H. 110mm with blue trousers, red cap and winking one eye, circa 1920s  
**\$100 - \$200**

**936** Clockwork Plastic Crawling Baby L. 100mm in red spotted costume and booties. Good plus condition in good carded box  
**\$50 - \$100**

**937** New Zealand Made Griffins Cookie Bear Promotional Toy with letter from Cookie Bear  
**\$50 - \$80**

**938** British Made Paddington Bear – brand unknown, L.500mm, circa 1972 with complete duffle coat in red & hat, label and Dunlop Wellingtons  
**\$50 - \$100**

**939** British Made London Bobby Bear – Merry Thought Brand, L. 480mm, circa 1980 with complete uniform, helmet & tags  
**\$50 - \$100**

**940** British Made Plush Squirrel circa 1950s & small red modern 2000 Teddy – 2 items  
**\$40 - \$80**

## LEGO + PLASTIC TOYS + PUPPETS + MISCELLANEA

**941** 7 boxed Lego boxed system toys – late 1990s inc. motorbike, racing car and helicopter  
**\$100 - \$150**

**942** Lego Technic Star Wars Stormtrooper  
**\$50 - \$100**

**943** Corgi Radio Controlled Super Bike. Good Plus condition with complete tray, instructions & outer pack  
**\$60 - \$100**

**944** Bag of approx 12 plastic Cowboy and Indian figures  
**\$25 - \$50**

**945** Bag of approx 14 plastic (possibly Bakelite) animals  
**\$25 - \$50**

**946** 2 Bayko Construction sets (British forerunner to Lego) inc. Building set no 1 with instruction booklet and Converting Set 0X – 2 items. Excellent condition in good plus carded boxes  
**\$100 - \$200**



919



903



911



926



912, 913, 914, 915



904



929



925



927



920



**947** 'Pictorial'Cutout Models Circus Favourites, Pictorial Productions Brand (Leeds, Britain) inc. boxing Kangaroo, seals & clowns etc together with Bendy rubber Rupert Bear – 2 items  
**\$50 - \$75**

**948** 2 British Clockwork Welsotoys plastic mechanical figures inc. Prince and Princess and Fairy Queen in fair box, both with keys  
**\$50 - \$100**

**949** Snow White and Seven Dwarves in resin  
**\$25 - \$50**

**950** Bag of approx 25 small marbles  
**\$20 - \$30**

**951** Victorian Wooden Spinning Top H. 87mm  
**\$40 - \$75**

**952** Mixed lot of accessories inc. metal London Tower Bridge, wooden petrol pump, small tractor & clockwork bird – 4 items  
**\$30 - \$40**

**953** Dolls Baking set of metal biscuit cutters – 6 items  
**\$25 - \$40**

**954** Dolls Bakelite tea set inc. teacup & Saucer; coffee pot & milk pourer - 5 items  
**\$25 - \$40**

**955** 4 Miniature Tin Dolls Furniture inc. fridge, kitchen range, washing machine & child's set of drawers – 4 items  
**\$40 - \$60**

**956** Dolls Miniature Tin Kitchenalia inc. pots & pans, tray, bowl, rolling pin, steel fireplace, fish slice, 2 x lemonsqueezers, brush, & ceramic mug etc – approx 20 items  
**\$100 - \$200**

**957** Dolls Metal Furniture & Tools inc. bath, sewing machine, basin, hammer; pliers, mincer; whisk & eggbeater – 8 items  
**\$75 - \$150**

**958** 3 Victorian cast iron Miniature or Lace irons – one with stand – 2 items  
**\$75 - \$150**

**959** 2 Victorian cast iron Miniature or Lace irons with red wooden handles – 2 items  
**\$30 - \$50**

**960** Small metal die cast Queen Mary ship  
**\$15 - \$25**

**961** Lego Football Player H.700mm  
**\$100 - \$150**

**962** Tweety Bird Rubber Toy – Warner Bros. 1999  
**\$10 - \$20**

**963** Miniature Tools – 3 x carpentry planes & one small anvil, possibly jewellery tool  
**\$50 - \$100**

**964** Smurfs - Box of approx 60 rubber figurines  
**\$75 - \$150**

**965** Superman Figure – jointed plastic H.760mm  
Excellent condition in original display case  
**\$50 - \$100**

**966** Cabbage Patch Kid by Toltoys, H.350mm, 1983  
Excellent condition in original display case  
**\$50 - \$100**

**967** Jumbo Shrek in plastic H.350 in original display pack  
**\$25 - \$40**

**968** Interactive Bart Simpson Talking Figure in plastic H. 420 in original display pack  
**\$25 - \$40**

**969** Elna Junior Sewing Machine L. 230mm in green with original pamphlet & clamp  
**\$30 - \$60**

**970** Peter Pan Child's Sewing Machine L.170mm with hand crank mechanism & clamp  
**\$50 - \$75**

**971** Coca –Cola Pedal Plane (Silver Edition) L.300mm in die cast metal with Certificate of Authenticity 1995  
Mint in original carded box with polystyrene inner tray  
**\$75 - \$150**

**972** Barbie Volkswagen Beetle by Mattel L.400mm in pink with blister pack accessories & decals  
Mint in good plus cellophane fronted carded box  
**\$50 - \$100**

**973** Walt Disney Cinderella's Carriage by Mattel L.640mm comprising horse and clear carriage with light and sound effects  
Mint in good plus cellophane fronted carded box  
**\$75 - \$150**

**974** Barbie Airplane by Mattel L.550mm with microphone & jet sounds  
Mint in unopened carded box  
**\$75 - \$150**

**975** Action Man Deep Sea Mission by Hasbro L500mm comprising Action Man figure, shark & diving cage & accessories  
Mint in unopened cellophane fronted carded pack  
**\$50 - \$100**

**976** 3 Action Man Packs by Hasbro inc. Extreme Roller Blader with skates, Extreme Driller with accessories & Operation Jungle - 3 items  
Mint in unopened cellophane fronted carded pack  
**\$75 - \$125**

**977** 3 Action Man Packs by Hasbro inc. Camo Atak with poster, Snowboard Raider with accessories & Powerarm Ninja - 3 items  
Mint in unopened cellophane fronted carded pack  
**\$75 - \$125**

**978** 2 Action Man Packs by Hasbro inc. Laser Force with accessories & Mountain

Bike Extreme with missiles- 2 items  
Mint in unopened cellophane fronted carded pack  
**\$100 - \$125**

**979** 2 All Blacks Heroes figures by Hasbro H. 300mm inc. Jeff Wilson & Michael Jones in All Black costume  
Mint in unopened cellophane fronted carded pack  
**\$50 - \$100**

**980** Walt Disney Prince Charming figure H.300mm  
Mint in unopened cellophane fronted carded pack  
**\$20 - \$40**

**981** Walt Disney Cinderella figure H. 310mm. Mint in unopened cellophane fronted carded pack  
**\$20 - \$40**

**982** 6 Wizard of Oz Figures by Mattel inc. Ken as the Tin Man, Barbie as Dorothy, Ken as Scarecrow, Ken as Cowardly Lion, Tommy as Mayor Munchkin & Tommy as Lollipop Munchkin - 6 items  
Mint in unopened cellophane fronted carded pack  
**\$125 - \$175**

**983** 2 Lego Bionicle packs – Lehvak & Gahlok  
Sealed in original plastic packs  
**\$25 - \$50**

**984** 4 Wizard of Oz figurines – Turner 1989 inc Dorothy, Tin Man, Lion & Scarecrow  
**\$75 - \$150**

**985** Jack in the Music Box - Mattel Brand 1971 features tin box & plastic springloaded clown figure with wind up music mechanism  
**\$30 - \$40**

**986** Smurf Mushroom House & figure - Schleich Brand  
Near mint in good plus box  
**\$20 - \$40**

**987** red Flinstone soft figure with plastic head H. 420mm  
**\$20 - \$40**





1005



1006



1009



1007



1008



1004



1018, 1019, 1020, 1021, 1023, 1025, 1027

997



1003



1013

1014



975



961



946



972

**988** 2 Plastic Dwarves  
**\$20 - \$40**

**989** Bart Simpson soft figure with plastic head H.500mm  
**\$20 - \$40**

**990** 2 Pink Battery Operated Duracell Energizer Bunnies H. 380mm one with drum & one with fire alarm – 2 items  
**\$30 - \$50**

**991** Chinese Child's Accordion - Hero Brand. H. 180mm in iridescent green with metal keys  
Good plus condition  
**\$30 - \$50**

**992** 2 Toy Pistols Cap Guns – one Western style in holster and one police revolver in black with set of caps in box  
Good condition  
**\$30 - \$50**

**993** Wooden Star Pond Yacht L.370mm in red & green with cloth sail  
**\$40 - \$60**

**994** Mixed lot of Noddy toys inc. clock, rubber PC Plod, plastic Noddy and one smaller vintage rubber Noddy & small Noddy jigsaw  
**\$50 - \$100**

**995** 7 Hand Puppets inc. Grenadier, Ghoul, 2 x Punch, Doggy, Policeman & Turbaned Monkey  
**\$75 - \$100**

**996** 2 Pelham Puppets – Highland Character in tartan kilt with bottle & Fluffy White Dog (with instructions) – 2 items  
Near mint in good plus box  
**\$100 - \$200**

**997** 2 Pelham Puppets – Bavarian Boy & Girl in Peasant Folk Costume – delightful pair (with instructions) – 2 items  
Near mint in good plus box  
**\$100 - \$200**

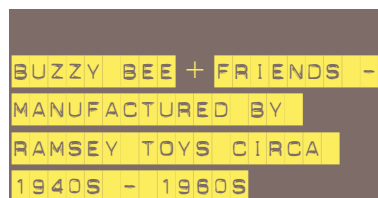
**998** Mickey Mouse Puppet with string controls  
**\$25 - \$50**

**999** Pelham Puppet Theatre circa 1950s in wood with curtains & instructions  
Good condition in fair box  
**\$50 - \$100**

**1000** British Cardboard Toy Theatre by Pollock's Redington, 1972 replica of 1848 original – Aladdin & Jack the Giant Killer, sets, proscenium etc on printed card – dimensions approx 530 x 510mm complete with script books in plastic bag  
Good plus condition  
**\$75 - \$125**

**1001** 5 Australian BP Themed Service Station plastic models inc. Shop, Pumps, Car Wash, Canopy etc & one Battery Powered 18 wheeler mobile truck shop  
Good Plus to mint in carded boxes  
**\$75 - \$125**

**1002** Child's Wooden Wheelbarrow L. 700mm  
**\$50 - \$100**



**1003** Mary Lou Wooden Toy in blue, cream, yellow & red with string and wooden bobbin  
**\$100 - \$200**

**1004** 'Jiminy Cricket' Wooden Toy in green, red & yellow  
**\$100 - \$200**

**1005** Dorable Duck Wooden Toy with 3 ducklings in tow in yellow, red, blue & cream with felt bills & string tow and wooden bobbin  
**\$100 - \$200**

**1006** Playful Puss Wooden Toy in blue, red with attached rolling ball in yellow and green and string tow and wooden bobbin  
**\$100 - \$200**

**1007** Trikey Tom Wooden Toy in red, blue & yellow with felt cap peak and string tow and wooden bobbin  
**\$100 - \$200**

**1008** Richard Rabbit Wooden Toy in red, green, yellow & pale blue with string tow  
**\$100 - \$200**

**1009** 'Puppy' Wooden Toy in yellow, blue, red & brown with string tow  
**\$100 - \$200**

**1010** Buzzy Bee Wooden Toy in red, yellow, blue and black – early version with cardboard wings with string pull and wooden bobbin  
**\$150 - \$250**



**1011** Playtime Toys Junior Farmyard Set of five lead items  
**\$50 - \$100**

**1012** Fun Ho! Mighty Mover 58 Jeep in blue and 4057 Holden Ute in bright green – 2 items  
Mint in original unopened blister pack  
**\$50 - \$100**

**1013** 4 Fun Ho! Mighty Movers 53 Breakdown Truck, 40 Articulated Milk Tanker, 49 Ford Sand Dumper & Tractor – 4 items. Mint in original blister pack  
**\$75 - \$100**

**1014** 2 Fun Ho! King Size K3 International Army Supply Truck & K4 Army Dump Truck – 2 items  
Mint in carded box with cellophane window  
**\$75 - \$125**

**1015** Fun Ho! King Size K2 International Dump Truck in red and green. Mint in carded box with cellophane window  
**\$50 - \$100**

**1016** 8 Fun Ho! Military Movers inc. 59 Armoured Jeep, 61 Army Ambulance, 62 Army Bulldozer (note packaging on rear of

toy does not include this model) 66 Army Grader, 67 Army Transporter, 69 Army Earth Scraper, 70 Army Tractor Shovel & an unnumbered model which appears to be a petrol tanker in army green with Caltex stickers – a curious variant – 8 items. Mint in original blister pack  
**\$125 - \$200**

**1017** Fastest Draw Six Shooter Gun – stamped Made in NZ possibly ACE brand Excellent condition in good plus original carded box  
**\$75 - \$150**

**1018** Fun Ho! Small Tractor (sandcast aluminium)– L.85mm – in yellow with white wheels and crimped axles  
**\$50 - \$75**

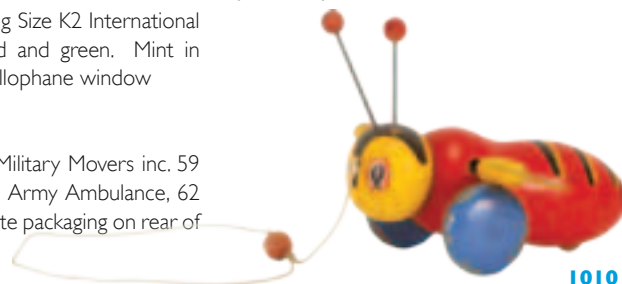
**1019** Fun Ho! Small Tractor (sandcast aluminium) – L.75mm – light blue with white wheels and crimped axles  
**\$50 - \$75**

**1020** Fun Ho! Ferguson Medium Tractor (sandcast aluminium)- L.110mm – in orange with white wheels and hub axles  
**\$75 - \$100**

**1021** Fun Ho! Small Tractor (sandcast aluminium)- L.95mm – in orange with open engine cavity with black wheels and crimped axles  
**\$75 - \$100**

**1022** Fun Ho! Ferguson Medium Tractor with dozer blade (sandcast aluminium)- L.130mm in light blue with white wheels and hub axles  
**\$75 - \$100**

**1023** Fun Ho! Oliver Medium Tractor (sandcast aluminium)- L.125mm in red and blue with white wheels and crimped axles  
**\$100 - \$200**





1029



1030

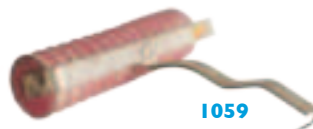
1051



1048



1059



1054



1046



1044



1038



1050



1036

1052



1041



1039



1033



1042



1032



1053

1037



1045



1057

1028



1043



1040



**1024** Fun Ho! Medium Tractor (sandcast aluminium)- L.125mm in red and green with white wheels and crimped axles – partial later overpainting in white  
**\$75 - \$100**

**1025** Fun Ho! Large Tractor (sandcast aluminium)- L.180mm in red with farmer figure in blue, white and pink with black rubber tyres, yellow wheels and crimped axles  
**\$100 - \$200**

**1026** Fun Ho! Large Tractor evers with black rubber tyres and crimped axles  
**\$100 - \$200**

**1027** Fun Ho! Fordson Medium Tractor (sandcast aluminium)- L.140mm in yellow with cast wheels and hub axles  
**\$100 - \$200**

**1028** Fun Ho! Farm Set No 3 (sandcast aluminium) consisting of small tractor and 10 disc harrow in light turquoise with white wheels. Mint in good plus carded box – rare and superior example  
**\$200 - \$400**

**1029** Fun Ho! Cap Revolver (sandcast aluminium) – L.220mm marked NZ No. 150, circa 1940s xtremely rare example  
**\$250 - \$350**

**1030** Fun Ho! Cap Pistol (sandcast aluminium) – L.140mm marked ?Z 109, circa 1940s xtremely rare example  
**\$250 - \$350**

**1031** 2 Fun Ho! ton commercial utility vehicles (sandcast aluminium) – L.85mm, one circa 1940s in light orange with metal wheels, crimped axles and open windows, marked Made N.Z. on the underside & one later example in yellow with black plastic wheels and closed in windows – 2 items  
**\$200 - \$300**

**1032** 2 Fun Ho! small roadsters (sandcast aluminium) – L.85mm, one circa 1940s in maroon with metal wheels, crimped axles and open windscreen & one later example in yellow with white wheels with closed windscreen – 2 items  
**\$200 - \$300**

**1033** Fun Ho! Tourist Bus (sandcast aluminium) – L.185mm, circa 1950s in blue with white wheels and hub axles  
**\$150 - \$250**

**1034** Fun Ho! Jeep (sandcast aluminium) – L.95mm, circa 1950s rimped axles  
**\$100 - \$200**

**1035** 2 Fun Ho! small sports cars (sandcast aluminium) – L.85mm, one coupe circa 1940s in orange with metal wheels, crimped axles and open windscreen & one later 2 seat convertible in yellow with white wheels – 2 items  
**\$200 - \$300**

**1036** 3 Fun Ho! cars (sandcast aluminium)- one circa 1940s 1948 Morris 8 Saloon playworn but originally red with metal wheels and crimped axles L.85mm, one Sports Tourer in red with later light green overpainting with yellow wheels and crimped axles L.95mm & one small racer in yellow with white wheels L.75mm – 3 items  
**\$200 - \$300**

**1037** Fun Ho! Small Tip Truck (sandcast aluminium)- L. 100mm, circa 1940s in maroon and cream with metal wheels and crimped axles  
**\$150 - \$250**

**1038** Fun Ho! Jet Aeroplane (sandcast aluminium)- L.110mm in yellow with white wheels and tail decals  
**\$100 - \$200**

**1039** Early Fun Ho! Oil Tanker in Lead – L.85mm, circa 1930s or early 1940s in yellow and black with red metal wheels and crimped axles  
**\$150 - \$250**

**1040** Fun Ho! 8Wheel Loco and Guards van ((sandcast aluminium)- L.230mm in total, 2 of 4 items from small train set in red with white wheels and crimped axles  
**\$150 - \$250**

**1041** Fun Ho! Breakdown Wagon (sandcast aluminium)- L.140mm in red with white wheels and crimped axles  
**\$50 - \$100**

**1042** Fun Ho! Studebaker Saloon (sandcast aluminium)- L.200mm, circa 1940s in blue with black rubber wheels with crimped axles & original decal clinging on for dear life!  
**\$150 - \$250**

**1043** Fun Ho! Racing Car (sandcast aluminium)- L.175mm in orange with black wheels and hub axles  
**\$75 - \$150**

**1044** Fun Ho! Tip Truck (sandcast aluminium)- L.170mm in orange and light blue with white wheels  
**\$75 - \$150**

**1045** Fun Ho! Jaguar XK 120 (sandcast aluminium)- L.180 in light blue with red wheels  
**\$100 - \$200**

**1046** Fun Ho! Tip Truck (sandcast aluminium)- L.260mm in red and blue with white wheels  
**\$100 - \$200**

**1047** Fun Ho! Heavy Dump Truck (sandcast aluminium)- L.180mm in green and red with white wheels and lifting mechanism operational  
**\$75 - \$150**

**1048** Fun Ho! Crawler Bulldozer Truck (sandcast aluminium)- L.130mm in purple  
**\$75 - \$150**

**1049** Fun Ho! Tip Truck with Front end Loader (sandcast aluminium)- L.360mm in yellow, red and blue with white wheels and lifting  
**\$100 - \$200**

**1050** Fun Ho! Small Road Grader (sandcast aluminium)- L.160mm in blue  
**\$75 - \$150**

**1051** Fun Ho! Large Tourist Bus (sandcast aluminium)- L.270mm in red (repainted) with grey driver and black wheels & Hamilton decal in place  
**\$150 - \$250**

**1052** Fun Ho! Large Fire Engine (sandcast aluminium)- L.300mm in red with silver ladders x 2 and white wheels  
**\$150 - \$250**

**1053** Fun Ho! Small Fire Engine (sandcast aluminium)- L.175mm in red with fixed ladders and white wheels  
**\$100 - \$200**

**1054** Fun Ho! Road Grader (sandcast aluminium)- L.245mm in pale turquoise and orange with white wheels – missing grader blade  
**\$75 - \$125**

**1055** Fun Ho! Two Wheel Trailer (sandcast aluminium)- L.230mm in red with white wheels  
**\$100 - \$200**

**1056** Fun Ho! Small Trailer (sandcast aluminium)- L.100mm in yellow with white wheels and crimped axle  
**\$75 - \$125**

**1057** Fun Ho! Large Double Furrow Plough (sandcast aluminium)- L.225mm in red and green with cast and white wheels – rare example with all parts intact  
**\$250 - \$350**

**1058** Fun Ho! Small Field Roller (sandcast aluminium)- L.120mm – early variant with purple roller and bare metal tow  
**\$75 - \$125**

**1059** Fun Ho! Small Field Roller (sandcast aluminium)- L.150mm – later variant with green tow and white plastic roller  
**\$75 - \$125**

**1060** Fun Ho! Large Gang Discs (sandcast aluminium)- L.235mm in green with white discs (illustrated below)  
**\$150 - \$250**



1031



1060

1081



1080



1084



1073



1062, 1066



1091



1102



1082



1063, 1064, 1065



1079



1074



1075



1092





**I061** No Lot

**I062** Fun Ho! Dolls Table & 4 Chairs (sandcast aluminium)- various sizes, circa 1940s in green and cream – extremely rare  
**\$200 - \$300**

**I063** Fun Ho! Dolls Bath (sandcast aluminium)- L.95mm – circa 1940s in cream – extremely rare  
**\$75 - \$125**

**I064** Fun Ho! Dolls Washstand Basin (sandcast aluminium)- L.50mm – circa 1940s in cream – extremely rare  
**\$75 - \$125**

**I065** Fun Ho! Dolls Lavatory (sandcast aluminium)- L.40mm – circa 1940s pale beige – extremely rare  
**\$75 - \$125**

**I066** Fun Ho! Dolls Kitchen bench and sink (sandcast aluminium)- L.100mm – circa 1940s in pale green – extremely rare  
**\$100 - \$150**

**I067** Possibly Fun Ho! - Dolls House Kitchen Scales - L.135mm – Kitchen Scales in yellow and metallic grey. Possibly Fun Ho! Interesting example  
**\$50 - \$100**

**I068** Fun Ho! Lavatory – New Zealand's Smallest Receiver (sandcast aluminium)- L.50mm – circa 1950s in black and gold with original sticker – extremely rare  
**\$75 - \$125**

**I069** 2 Fun Ho! Road signs (sandcast aluminium)- L.95mm in red  
**\$75 - \$125**

**I070** Fun Ho! Harrows (sandcast aluminium)- L.100mm in light blue  
**\$50 - \$75**

**I071** Fun Ho! 4 Wheel Trailer (sandcast aluminium)- L.250mm in red with white wheels  
**\$75 - \$125**

**I072** Fun Ho! Two Wheel Trailer (sandcast aluminium)- L.230mm in pale

turquoise with white wheels  
**\$75 - \$150**

**I073** Fun Ho! Motorbike with Pillion (sandcast aluminium)- L.100mm in mustard with white wheels  
**\$200 - \$300**

**I074** Fun Ho! Two Jaguar Coupe (sandcast aluminium)- L.125mm, circa 1960s in orange with white wheels – pristine example  
**\$150 - \$250**

**I075** Fun Ho! Bomb Racer (sandcast aluminium)- L.125 mm, circa 1960s in red with white wheels – pristine example  
**\$100 - \$200**

**I076** Fun Ho! Medium Jeep (sandcast aluminium)- L.140mm in grey with white wheels  
**\$100 - \$200**

**I077** Fun Ho! Fire Engine (sandcast aluminium)- L.115mm in red with white wheels and crimped axles  
**\$100 - \$200**

**I078** Fun Ho! Fire MG Sports Car (sandcast aluminium)- L.100mm in red with white wheels and crimped axles  
**\$100 - \$200**

**I079** Fun Ho! Pull Along Engine (sandcast aluminium)- L.230mm in yellow with black wheels and hub axles  
**\$100 - \$200**

**I080** Fun Ho! Mercedes Benz Racer (sandcast aluminium)- L.190mm in red with white wheels and hub axles – some later overpainting  
**\$75 - \$150**

**I081** Fun Ho! 10 Wheel Train Engine and Tender (sandcast aluminium)- L.360mm both in red with white wheels and crimped axles – 2 items  
**\$300 - \$500**

**I082** Fun Ho! Crawler Tractor (sandcast aluminium)- L.190mm in yellow and pale turquoise  
**\$100 - \$200**

**I083** Fun Ho! Crawler Tractor with Front End Loader (sandcast aluminium)- L.260mm in red and yellow  
**\$100 - \$200**

**I084** Fun Ho! Large Tip Truck (sandcast aluminium)- L.360mm in red and yellow white wheels  
**\$100 - \$200**

**I085** Fun Ho! Earth Scraper (gravitational diecast)- L.285mm in orange with black plastic wheels  
**\$50 - \$100**

**I086** Fun Ho! Tractor with blade & 2 x Two Wheel Trailers (gravitational diecast)- L.285mm in orange with black plastic wheels and trailers in blue and green – 3 items  
**\$100 - \$150**

**I087** Fun Ho! Giant Tip Truck (sandcast aluminium)- L.480mm in blue and white with black plastic wheels – pristine example  
**\$75 - \$125**

**I088** Fun Ho! Articulated Truck (sandcast aluminium)- L.710mm in turquoise and white with black plastic wheels – pristine example  
**\$75 - \$125**

**I089** Fun Ho! Ford Articulated Cattle Truck and 4 Wheel Wagon (gravitational diecast) – L.570mm in total in orange, turquoise and yellow with black wheels and decals intact – pristine example  
**\$125 - \$175**

**I090** Fun Ho! Road Roller (gravitational diecast) – L.230mm in pale green with cast wheels  
**\$50 - \$100**

**I091** Fun Ho! Grader (gravitational diecast) – L.275mm in green with black plastic wheels  
**\$50 - \$100**

**I092** 3 Fun Ho! Chrome midget sized cars – Holden, BOAC Bus & Austin Truck – 3 items  
**\$40 - \$75**

**I093** Mixed lot of Fun Ho! inc. Mighty Mover Articulated Truck in Blister pack, 12 empty carded boxes for midget scale models, Bus Transfer labels, 5 sets of printed Midget Scale product range flyers, one early model minus wheels and a single loose driver figure – 21 items  
**\$100 - \$150**

**I094** Micro Models (New Zealand) Holden Sedan in red  
**\$50 - \$100**

**I095** 5 Fun Ho! Midget Cars inc. 25 M.G. Sports in green, 11 Morris Mini Minor in cream, 15 Hillman Imp in turquoise, 26 Thames Freighter in chrome & 13 Morris 1100 bronze chrome – 5 items  
 Mint in excellent boxes  
**\$75 - \$150**

**I096** 7 Fun Ho! Midget Cars inc. 25 M.G. Sports in green, 32 Austin 1100 in cream, 9 VW in bronze, 35 Ambulance in white, 43 E Type Jaguar in red, 14 Cortina Estate in cream & 11 Morris Mini Minor in turquoise – 7 items  
 Mint in excellent boxes  
**\$100 - \$200**

**I097** 5 Fun Ho! Midget Sedans inc. 2 x 23 Mark 10 Jaguar in chrome, 45 Mercedes in copper, 24 Chevrolet Belair in red & 41 For Zodiac Mk. 4 in red – 5 items  
 Mint in excellent boxes  
**\$75 - \$150**

**I098** 5 Fun Ho! Midget Cars inc. 34 Holden Saloon in red, 17 Austin Mini in metallic pale burgundy, 47 Fork Lift in blue, 39 Farm Trailer in red & 26 Thames Freighter Pick Up in chrome – 5 items  
 Mint in excellent boxes  
**\$75 - \$150**

**I095**

1123



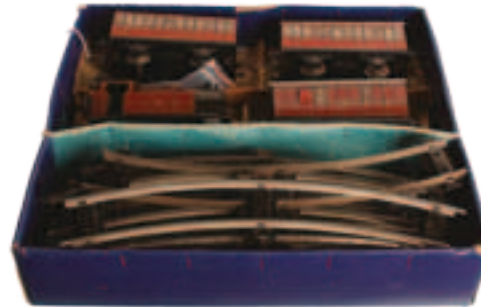
1117



1125



1120



1104



1112



1129



1110



1128



1126



1119



**1099** 5 Fun Ho! Midget Cars inc.26 Thames Freighter Pickup in red, 8 Austin Tip Truck in red, 38 Car Trailer in red, 17 Austin Mini in pale metallic burgundy & 39 Farm Trailer in red— 5 items  
Mint in excellent boxes  
**\$75 - \$150**

**1100** 8 Fun Ho! Midget Trucks & Tractors inc. 50 Ford Dump Truck in blue & white, 54 Tractor Shovel in blue, 42 Caterpillar Tractor in red, 44 Caterpillar Front End Loader in red, 46 Caterpillar Bulldozer in yellow, 48 Ford Truck in blue, 37 Aveling Road Roller in orange & 22 Artic Truck in red & grey — 8 items.  
Mint in excellent boxes  
**\$125 - \$200**

**1101** 6 Fun Ho! Midget Cars inc. 56 Landliner bus in blue, 33 Rolls Royce Phantom V, 5 VW Combi in bright green, 20 Thames Freighter in bronze, 36 Police Van in white & 23 Mark 10 Jaguar in red — 6 items. Mint in good plus cellophane fronted carded boxes  
**\$100 - \$150**

**1102** 7 Fun Ho! Midget Trucks inc. 19 railer in red, 29 Bedford Truck in green & orange, 40 Milk Tanker in green & white, 51 Ford Artic.Truck in orange and white & 47 Fork Lift in pale blue — 7 items  
**\$125 - \$200**

**1103** Fun Ho! Mighty Movers Fire Service Kit comprising 6 vehicles in red inc. Fire Truck, Jeep, Utility, Artic.Truck etc — complete with decals  
Mint in good plus cellophane fronted carded box & plastic inner tray  
**\$200 - \$300**

**1104** Fun Ho! Mighty Movers Construction Battalion Kit comprising 6 vehicles in military green inc. Heavy Roller, Jeep, Bulldozer etc — complete with decals. Mint in good plus cellophane fronted carded box & plastic inner tray  
**\$200 - \$300**

**1105** Fun Ho! Mighty Movers Forestry Kit comprising 6 vehicles in yellow inc. 2 x Bulldozers, Grader, Utility etc  
Mint in good plus cellophane fronted carded box & plastic inner tray  
**\$200 - \$300**

**1106** Playtime Toys Farmyard Series Lead Horse & Foal  
Mint in carded box  
**\$30 - \$50**

**1107** Hare Pulling cart in aluminuim, brand unknown L. 160mm in yellow and blue with red hat  
**\$30 - \$60**



**1108** Hornby O Gauge NE Breakdown Van and Crane in good box together with No.2 NE Lumber Wagon good to good plus condition — 2 items  
**\$100 - \$200**

**1109** Hornby O Gauge track & lineside accessories including Semaphore Junction No. 2 in near mint condition in good plus box, Level Crossing No. 2 in excellent condition in fair box together with Wembley Island platform with yellow base — 3 items.  
Excellent condition in partial box  
**\$175 - \$300**

**1110** Hornby O Gauge Timber Wagon No.2. Early version with brass buffers on green base with five plank load. Good plus condition in fair box  
**\$250 - \$400**

**1111** Hornby O Gauge 4 & 8 wheel rolling stock inc. No 1 Milk Traffic Van in excellent condition in near mint box, No 1 luggage van unboxed in good condition, No 1 1st & 3rd Passenger Coach unboxed, LMS Furniture Removal Wagon unboxed, Shell Petrol Tank Wagon and 2 Open Wagons — 7 items  
**\$150 - \$250**

**1112** Hornby O Gauge Snow Plough. Early version with LNER lettering on both base sides & finished in black & grey with red fan and black cast lamp  
Unboxed in excellent condition  
**\$350 - \$500**

**1113** Hornby O Gauge 4 wheel rolling stock inc. BR Insulated Meat Van, National Benzole Petrol Tank Wagon, Esso Petrol Tank Wagon, Open Wagon, Brake Coach and LMS Brake Van — 6 items  
unboxed in good condition  
**\$125 - \$200**

**1114** Hornby O Gauge Station accessories including Level Crossing, No.3 Station, Wayside Station, Double Arm signal and accessories inc. Milk Churns & P.O. Box together with trackwork inc. boxed Acute- Angle Crossing, 2 ft. Radius points — 10 items  
**\$300 - \$400**

**1115** Hornby O Gauge Station accessories inc. No 1 Buffer Stop in box, No 1 Water Tank in box, CRI Right-Angle Crossing & No 2 Turntable in box — 4 items  
**\$100 - \$150**

**1116** Real Rail (Havelock North) 'Papakura' station and 2 loose wooden mounted lengths of track together with a metal railway overbridge in red & 2 loose lengths of track on spaced green metal supports  
**\$100 - \$200**

**1117** Hornby O Gauge No 2 Passenger Coach in Good Plus condition in box together with unboxed Pullman Passenger Coach — 2 items  
**\$100 - \$150**

**1118** Hornby O Gauge 4 wheel rolling stock inc. No 1 Lumber Wagon, No 1 Crane Truck, LMS Hopper Wagon, No 1 Side Tipping Wagon, Gas Cylinder Wagon — 5 items. Good to excellent condition in good plus boxes  
**\$125 - \$175**

**1119** Hornby O Gauge No.1 0-4-0 Tank Loco LNER green No.460  
Good condition in good box  
**\$100 - \$150**

**1120** Hornby O Gauge 4 wheel rolling stock inc. Flat Truck with Cable Drum, LMS Tender & misc Crane Truck — 3 items  
Unboxed in good plus condition  
**\$60 - \$100**

**1121** Hornby O Gauge Boxed Set inc. 0-4-0 Tank Loco LMS maroon No.2270, 3 x 4 wheel coaches and misc, lengths of track. Good condition in fair blue carded box  
**\$150 - \$200**

**1122** Hornby O Gauge Boxed set — Tank Goods Set No.40 inc. approx 10 lengths of track, one wagon & box of connecting plates (no Loco). Good plus condition in good carded box  
**\$75 - \$125**

**1123** Hornby O Gauge type 40 0-4-0 Tank Loco BR black No 82011 & Tender Good Condition  
**\$150 - \$150**

**1124** Hornby O Gauge track and links — straights, bends & switching junction — approx 80 items  
**\$100 - \$150**

**1125** Bassett-Lowke O Gauge British Rail Coach in red and cream circa 1920s  
Good plus condition in fair carded box  
**\$200 - \$300**

**1126** Hornby Dublo OO Gauge T.P.O Mail Van Set complete with luggage and instructions. Mint in excellent box  
**\$150 - \$250**

**1127** Hornby Dublo OO Gauge 7 rolling stock and coaches inc. Flat Tuck with Cable Drums, 3 x passenger coaches & 3 assorted 4 wheel wagons.  
Good condition  
**\$50 - \$100**



**I128** Hornby Dublo OO Gauge 4-6-2 Loco and Tender LMS maroon Duchess of Atholl No.6231, B.R. D14 Brake Unboxed Loco in good plus condition, Coaches near mint in excellent boxes  
**\$300 - \$400**

**I129** Hornby Dublo OO Gauge trackside accessories inc. D1 Level Crossing, D1 Water Cranes, D1 Loading Gauge, Assorted Signage, D3 Junction Signal, D1 Island Platform, unboxed footbridge and buffer – 9 items. Excellent to near mint condition in good plus to excellent boxes  
**\$300 - \$400**

**I130** Trix Twin 0-4-0 Loco and Tender no 30782 in BR green. Good condition in plain carded box  
**\$75 - \$125**

**I131** 5 Trix Twin 4 wheel rolling stock inc 2 x petrol tankers, coal wagon, guards wagon & one covered wagon – 5 items Good condition  
**\$75 - \$125**

**I132** Mixed lot of Lone Star OOO Gauge trains & accessories inc. coaches, engine & trackside accessories – 6 items Good condition  
**\$25 - \$50**

**I133** Mixed Lot of Horny OO Gauge track, O Gauge Signalman's hut together with small car and petrol bowser Good condition  
**\$25 - \$50**



**I134** Britains Lead Figures set 1654 Snow White and six dwarves – 7 items fair to good condition  
**\$100 - \$200**

**I135** Lead Figures possibly Britains – flock covered zoo animals inc. tiger, lion, emu, wolf, giraffe etc – 11 items excellent condition  
**\$100 - \$200**

**I136** 9 Britains Lead Figures of zoo animals inc. tiger, elephant, crocodile, walrus, hippo, sable antelope, baby giraffe, water buffalo, Moose (Charbens) & Gnu – 9 items. Good to excellent condition  
**\$100 - \$150**

**I137** 15 Britains Lead Figures of zoo animals inc. hippo, hippo, calf, black bear, seated bear cub, elephant, 3 x lions in various poses, steer, wild boar, tiger, baby giraffe, sable antelope, walrus & crocodile – 15 items. Good to excellent condition  
**\$150 - \$200**

**I138** 7 Britains Lead figures of zoo animals inc. Ostrich, kangaroo, anteater, tortoise, rhino, dromedary standing and in repose – 7 items Good to excellent condition  
**\$100 - \$150**

**I139** 14 Britains Lead Figures of Cowboys and Indians inc. teepee, canoe, figures on horseback, totem pole, bison and trees – 14 items Good to good plus condition  
**\$150 - \$250**

**I140** 4 Britains Lead Figures inc. Crusader on horseback with lance and shield, 2 x knights on foot & Bedouin on camel – 4 items. Good condition  
**\$75 - \$125**

**I141** 4 Britains Farm & Zoo accessories inc. 4 Furrow Tractor, Vari Spreader, Feed manger and 8 Zoo Railings – 4 items Good to mint condition in fair to good plus carded boxes  
**\$75 - \$125**

**I142** 12 Britains Lead Farm figures inc. farmer with crook and moving arm, 2 x farmer's wife with basket and moving arm, farmworkers, milkmaids, milkmaid on stool, tramp, Carter with whip & others – 12 items. Fair to good plus condition – one figure repaired  
**\$125 - \$175**

**I143** 14 Britains Lead farm accessories inc. tree, doves, 3 x hedge sections, hedge and gate. 2 x stacked barley, street lamp, trough etc – 14 items

Fair to good plus condition  
**\$125 - \$175**

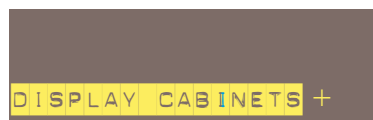
**I144** 37 Britains Lead farm animals inc. 2 x draft horses, billy goat, horses and foal, sow with litter, cows, pigs, geese, swans, chickens, dog, 2 x horse drawn carts etc – 37 items. Generally fair to good plus condition  
**\$350 - \$500**

**I145** Parro-Toy (New Zealand) Farmyard set consisting of 25 lead figures inc. farmer, scarecrow, trees, horses, cows, sheep and ducks etc – extremely rare. Near mint in original good plus carded box  
**\$250 - \$400**

**I146** Britains Historical Series 9401 - 1954 Coronation Coach comprising Gilt Coach with 8 x Windsor Grey Horses, 4 with Riders, "H" type Traces & Queen and Duke of Edinburgh in Coach. Generally Good Plus to excellent condition in fair box  
**\$100 - \$200**

**I147** Britains Set 32 Royal Scots Greys - 1953 issue comprising 1 x Officer with sabre at the carry & 4 x Troopers with drawn sabres. Semi matt grey spray finish to horses Mint in excellent illustrated carded  
**\$150 - \$250**

**I148** Britains Set 5184 The Lifeguards of the Household Cavalry – 1984 Limited edition 6004 inc alloy comprising 6 guards on horseback in full regalia with sabres at the carry (also includes letter of delivery certifying that only 50 sets were allocated to New Zealand) with 1982 handpainted set 7227 of 6 standing guards Near mint to mint in excellent plus boxes  
**\$100 - \$200**



**I149** Tall glass fronted display case with 5 glass shelves H. 1870mm x L. 1700mm x D.400mm in white with glass doors &

mirrored glass internally to rear  
**\$150 - \$300**

**I150** Tall glass fronted display case with 5 glass shelves H. 1870mm x L. 1700mm x D.400mm in white with glass doors & painted wood to rear  
**\$150 - \$300**



**I151** German Tinplate Clockwork Rollover Cat and Ball with key – made in US Zone Germany. Good plus condition  
**\$75 - \$150**

**I152** German Tinplate Clockwork Handstand Clown with key – made in US Zone Germany inscribed D R G M Good condition  
**\$75 - \$150**

**I153** UK Tinplate Clockwork Mechanical Drummer Boy, Wells & Co (UK) No.966 - comprising tinplate horse with seated drummer boy and drum with key  
**\$75 - \$150**

**I154** Japanese Tinplate & Celluloid Clockwork Boy Tourist with Luggage - Kuramochi Brand circa. 1930s– checked jacket, luggage on wheels, handpainted features with mechanism in working order with key, height 210mm Excellent condition in good plus box – a rare and superior example  
**\$700 - \$1000**

**I155** German Tinplate Friction Delivery Truck - Gama Brand in red and yellow with lifting tray. Good Plus condition  
**\$100 - \$250**

**I156** Japanese Tinplate Friction Convertible - Haji Brand in red with blue interior. Good condition  
**\$30 - \$50**

**I157** English Tinplate Clockwork Paddle Steamer in yellow with rudder and winding mechanism intact. Fair condition  
**\$50 - \$100**

**I158** Japanese Tinplate Kingsize Volkswagen Sedan - Bandai Brand - battery operated model of the Volkswagen Beetle in metallic red, with detailed tinprinted interior; plated parts including hubs, clear plastic rear bonnet to reveal working engine detail, mystery action to underside, sliding roof, circa 1960s.  
Length 380mm. Near mint condition in fair but complete box  
**\$250 - \$350**

**I159** German Tinplate Clockwork 'Nu-Nu'Coolie with Tea Chest - Lehmann Brand - Coolie with pigtail intact in blue, white and red (note this is the companion piece to the famous Lehmann two coolies with litter passenger holding coolie's pigtail which sells for in excess of 1000 pounds) circa 1915 (note patents to base range from 1908 to 1913)  
Good condition with some paint loss – rare and early tinplate toy  
**\$600 - \$800**

**I160** 5 German Tinplate Clockwork Animals inc. Squirrel, Dog, Rooster with felt comb & tail, Circus Monkey & Duck – made in US Zone Germany – 5 items  
Good plus condition  
**\$150 - \$250**

**I161** German Tinplate Clockwork Indian Brave on Horseback in green, red and beige – made in US Zone Germany  
Excellent condition  
**\$75 - \$150**

**I162** English Tinplate Clockwork Horse in dappled brown. Good condition  
**\$25 - \$50**

**I163** German Tinplate Sedan in black & red – made in US Zone Germany – curious example with Donald Duck gesturing in rear window  
Fair condition  
**\$50 - \$100**

**I164** Japanese Tinplate Caravan - Haji Brand in red, yellow & blue – opens to reveal interior with loose table and chair  
Good condition  
**\$50 - \$100**

**I165** New Zealand Tinplate Clockwork Motorcycle Racer - Lincoln Toys brand in yellow, orange, red and black with plated detailing. Excellent condition – rare example  
**\$200 - \$400**

**I166** Japanese Tinplate Battery Operated Go-Kart - Modern Toys brand in red, blue, yellow and white with aerial  
Excellent condition in fair box  
**\$150 - \$250**

**I167** Mixed Tinplate inc. three smaller sedans & clockwork frog – 4 items  
**\$30 - \$50**

**I168** Sakai (Japanese) Outboard Motor in metallic blue and grey  
Near mint in good plus carded box  
**\$75 - \$150**

**I169** Etna Toy Revolver Cap Gun in black. Good condition with some corrosion in fair original carded box  
**\$50 - \$75**

**I170** Tri-ang Minic Clockwork Mouse manufactured by Lines Bros. New Zealand. Fair condition in fair carded box  
**\$30 - \$50**

**I171** British Clockwork boat, Sutcliffe Brand Sprite Day Cruiser in red and white, missing bung & key. Excellent condition in good plus carded box  
**\$100 - \$200**

**I172** British Clockwork Submarine - Sutcliffe Brand 'Unda-Wunda' in light blue with key but not bung  
Excellent condition in good plus carded box and insert  
**\$200 - \$300**

**I173** British Clockwork Battleship - Sutcliffe Brand 'Valiant' in black lower hull and grey deck and superstructure includes mast, flag, bung & key – extremely rare to find with all 4. Excellent condition in good plus carded box  
**\$400 - \$600**

**I174** Japanese Tinplate Clockwork racing car; brand unknown in yellow, grey and red, circa 1930s

Length 300mm  
Good plus condition  
**\$700 - \$1000**

**I175** American Pressed Steel Pre-WWII sedan and caravan in red with wooden wheels – possibly Marx or Wyandotte  
Good plus condition  
**\$200 - \$300**

**I176** 3 Clockwork Toys inc. boxed Clown with cymbals in red tunic and blue check pants and boxed Musical Bunny with cymbals & unboxed Santa with bell – 3 items. Near mint in good boxes  
**\$60 - \$75**

**I177** 4 German Clockwork musicians - Schuco Brand harmonica player in traditional German costume monkey violinist, monkey drummer & mousebellringer; 3 with keys and dressed in felt costumes– 4 items  
Good plus condition  
**\$500 - \$750**

**I178** British Tinplate Clockwork Railcar – Wells Brand 'Golden Streak' in brown and cream. Good condition  
**\$30 - \$50**

**I179** British Miniature Roller Lawn Mower – H.C. Webb & Co. (Birmingham) H.600mm, circa 1940s/50s in green with metal and wooden rollers and red metal blades & green catcher in working order; complete with decals inscribed 'The Webb Miniature Lawnmower for Children'  
**\$600 - \$1000**

**I180** West German Clockwork Tinplate Remote Control Helicopter - brand unknown L.210mm, circa early 1960s consisting of metal landing pad with height control mechanism and revolving half globe & helicopter with separate clockwork rotor blade  
Good & operational condition  
**\$150 - \$250**

**I181** Battery Operated Tinplate Fire Engine - brand unknown L.310mm, circa early 1960s in red with extension ladder and three well detailed fire fighters in yellow uniforms. Good condition  
**\$100 - \$200**

**I182** Japanese Battery Operated Tinplate Piggy Cook - brand unknown, H. 240mm, circa early 1960s, Pig figure in chef's uniform with frypan and spoon over element & stove. Good condition  
**\$75 - \$125**

**I183** Japanese Battery Operated Tinplate & Plastic 'McGregor' Cigar Smoking Scotsman - Rosko Brand, H. 270mm. Good Plus Condition  
**\$125 - \$175**

**I184** Mickey Mouse and Donald Duck Childs Drum in painted & pressed steel, d. 205mm  
**\$30 - \$60**

**I185** British Tinplate Child's Typewriter - Mettype Brand, L.260mm in red and blue  
Fair condition  
**\$30 - \$50**

**I186** 4 Money Boxes inc. Japanese Tinplate Mickey Mouse Treasure Chest, Tinplate House Money Box in original carded box, Finnich made plastic Scrooge McDuck Money Box & U.F.O wind up Savings Bank – 4 items  
**\$75 - \$150**

**I187** Miniature Steam Engine - Mamod Brand (British), H.165mm & accessory – 2 items. Fair condition  
**\$40 - \$60**

**I187a** Japanese Battery Operated Tinplate X-5 Space Ship - Modern Toys Brand Brand, D. 200mm. Excellent condition in good box  
**\$125 - \$175**



I179



1154



1158



1159



1175



1174

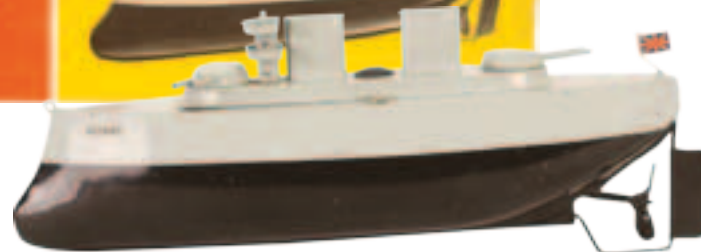


1147

1173



1165



1177



1145





**I188** Japanese Clockwork Tinplate Toy 'Billy The Ball Blowing Magic Whale' - KO Brand L.160mm – Billy blows polystyrene balls (absent) Good plus condition  
**\$75 - \$150**

**I189** Japanese Clockwork Tinplate Toy 'Calypso Joe' - Brand unknown H. 160mm – figure and drum on rocking base Excellent condition in good carded box  
**\$250 - \$350**

**I190** Japanese Friction Driven Tinplate Buick Invicta Highway Patrol Car - Ichiko Brand L.280mm in blue & white Good condition  
**\$100 - \$150**

**I191** West German Friction Driven Motorcyclist - Huki Brand L.180mm in red, yellow & blue with distinctive Dunlop printed metal tyres. Good plus condition  
**\$150 - \$250**

**I192** Japanese Clockwork Tinplate Drinking Monkey in Tophat - Linemar Brand H. 160mm in black, brown, white & red with plastic bottle. Good condition  
**\$50 - \$100**

**I193** West German Friction Driven Tip Truck - Gama Brand L.220mm in yellow, red & blue with rubber tyres & one other friction delivery van in red and green – 2 items. Good plus condition  
**\$75 - \$125**

**I194** British Clockwork Tinplate 2 Door Touring Car - Mettoy Brand L.230mm in orange & cream with balloon wheels & One Green clockwork Tinplate Lorry, possibly Wells Brand in green & cream with balloon wheels – 2 items Good to good plus condition  
**\$125 - \$175**

**I195** Clockwork Tinplate Charlie Crocodile - brand unknown L.370mm in red, yellow & brown with snapping mouth mechanism. Excellent condition in good carded box  
**\$150 - \$250**

**I196** 2 West German Tinplate Handwerker Serie figures - Wileco Brand H. 100mm – M 73 Wood Cutter & M74

Shears Grinder – 2 items Near mint condition in good plus boxes  
**\$75 - \$150**

**I197** Australian Pressed Steel Cash Register - Boomaroo Brand H. 180mm in red & yellow with pre-decimal currency & Boomaroo Toys label affixed Good condition  
**\$100 - \$150**

**I198** Friction Driven Tinplate Tram - brand unknown L. 180mm in green, orange & red with 11 figures, inscribed Powell & Mason Sts. & Bay & Taylor Sts. Good Plus condition  
**\$100 - \$200**

**I199** Clockwork Tinplate Armoured Car - brand unknown possibly Arnold L.140mm in extravagant camo. pattern Good Condition  
**\$75 - \$150**

**I200** British Tinplate Child's Adding Machine - Peter Pan brand L.220mm in red, blue & white. Good plus condition in good but damaged box  
**\$75 - \$150**

**I201** Japanese Battery Operated Musical Marching Bear - Alps Brand L.260mm in felt pelt & checked pants with tin drum & trumpet. Good condition in good box – needs slight repairs  
**\$100 - \$200**

**I201** Clockwork Tinplate Airport Control Tower - brand unknown – possibly Schopper (West German)H. 350mm comprising revolving tower mechanism with 3 planes. Good condition  
**\$100 - \$200**

**I203** Japanese Battery Operated 'Mambo' Drumming Elephant - Alps Brand H. 230mm in artificial silk plush with drumkit. Excellent condition in fair box  
**\$100 - \$150**

**I204** Japanese Battery Operated Monkey with Cymbals - Bandai Brand H. 270mm in artificial silk plush & yellow and striped costume Excellent condition in good box  
**\$125 - \$175**

**I205** Chinese Battery Operated Musical Tinplate Hen Laying Eggs - brand unknown H.160mm with plastic eggs Good plus condition in good plus box  
**\$40 - \$80**

**I206** British Gyroscope in metallic blue in original box & one small plunger activated spinning top Good condition – 2 items  
**\$30 - \$50**

**I207** 3 Japanese Mechanical Toys inc. Strutting Duck with Cane, Miss Suzie with Mirror & Lipstick & Blackie Duck Roller Skater – 3 items Good Plus condition in good boxes  
**\$100 - \$200**

**I208** 3 Japanese & Korean Mechanical Toys inc. Clown Tricycle, Jumping Rabbit & Skip Rope Animals – 3 items Good Plus condition in good boxes  
**\$75 - \$150**

**I209** 4 Japanese & Hong Kong Mechanical Toys inc. Mascot Squirrel, Mascot Dog, Leaping Frog & Wobbling Penguin – 4 items Good Plus in fair to good plus boxes  
**\$75 - \$150**

**I210** 5 Japanese, Chinese & Hong Kong Mechanical Toys inc. Gosling, Pecking Duck, Mother Goose, Bird & Shell & Drumming Monkey – 5 items. Good plus condition in fair to good plus boxes  
**\$75 - \$150**

**I211** Limited Edition 410 of 1500 Clockwork Tinplate 'The Jolly Skiing Big Ears' issued by the Toy Museum Singapore with certificate of authenticity Mint in round metal tin  
**\$50 - \$100**

**I212** German Clockwork Tinplate 'Pixie Phone' - Gama Brand L.200mm child's gramophone in pale green, red and with tinplate arm and pick-up with felt covered turntable. Offered with Bell records small record D. 1350mm record titled 'It Ain't Gonna Rain No Mo' Good plus condition  
**\$125 - \$175**

**I213** German Mechanical Tinplate Tom Climbing Monkey - Lehmann No.888 H. in red jacket, blue trousers, yellow waistcoat & orange Fez. Monkey climbs cord when rings are pulled. Good plus condition with mechanism in working order  
**\$75 - \$150**

**I214** Mechanical Tinplate Douglas Baby Airliner in TWA livery - brand unknown, possibly Gama L. 170mm in metallic gold finish & registration number NC223Y & one smaller Loop the Loop clockwork stunt plane in yellow & red – 2 items Good condition  
**\$75 - \$125**

**I215** Clockwork Tinplate Singapore Flying Boat - brand unknown, Wingspan 205mm in metallic silver with RAF roundels, twin wing with 4 props Good condition  
**\$75 - \$100**

**I216** German Friction Driven Tinplate Motorbike & Rider - Technofix Marx Brand L.180mm in red, yellow and green with red helmet and one Japanese friction driven motorbike and rider – 2 items Good condition  
**\$100 - \$200**

**I217** Clockwork tinplate Diamond Truck - brand unknown, probably American, comprising truck in red with steerable balloon wheels in red & diamond trailer in red with opening compartment, circa 1930s. Good condition  
**\$300 - \$500**

**I218** American Clockwork Tinplate Carousel - Wyandotte brand, H.140mm in red, yellow & blue comprising carousel with 4 x hanging planes & swans activated by push lever which rotates carousel, circa 1930s (model made between 1922 & 1955). Good working condition  
**\$150 - \$250**

**I219** Victorian Period Tinplate & Wooden English Horse and Cart, L. 330mm in grey, red & yellow comprising a wooden horse with metal legs with remnants of original lithograph & tin cart with pressed metal wheels. Fair condition  
**\$100 - \$150**



1216



1217



1219



1218

**I220** Clockwork Tinplate Horse and Cart - brand unknown, L.250mm in yellow, circa 1930s  
Fair condition  
**\$75 - \$125**

**I221** Mixed lot of tinplate inc. small Disney child's bucket, Chinese made Goose with child rider, VW van with flat tray in blue and white, coupe in blue, Triang Minic Heavy Roller in red & green & 6 clickers – alligators, bugs etc  
**\$100 - \$200**



**I221a** Piggy Muldoon Money Box & New Zealand One Penny Money box in bronze plastic – 2 items  
**\$25 - \$50**

**I222** 5 Tin money boxes – Post Office Box & Telephone Booth designs in red  
**\$50 - \$100**

**I223** John Harper & Co Transvaal Money Box in bronze, British made H. 150mm in green, cream & brown  
Good plus condition  
**\$60 - \$80**

**I224** Artillery Bank in cast iron, probably American made L. 200mm in green, red & black. Mechanism fires coin from mortar into tower  
**\$75 - \$125**

**I225** Starkie's Jolly Nigger Bank in aluminium, British made – patent no 601362 on rear; H. 140mm in black, red & white with green bowtie. Push lever; he raises his arm and swallows the coin as his eyes roll down, tongue flips in and ears rotate forward, circa 1920  
Good working condition with some paint loss  
**\$150 - \$250**

**I226** Standing Bear Money Box in cast iron H. 160mm in silver. Two piece bear is joined by a prominent screw in the centre of the back  
**\$30 - \$50**

**I227** Skyscraper Bank Money Box in cast iron H. 140mm in blue. Two piece construction is perforated to represent the windows and doors of the building  
**\$100 - \$200**

**I228** Country Bank Money Box in cast iron H. 140mm in brown with gold highlights & perforated windows  
**\$150 - \$250**

**I229** 3 New Zealand Post Office Savings Bank & 1 Southern Cross Permanent Building Society Money Boxes in sheet metal & tin – one in the form of a book with red cover and embossed Post Office logo, one in the form of a small safe with handle & stamped Post Office Savings Bank on face and numbered 2211 & one in oval shape with handle and embossed copper logo & title, Southern Cross Money Box in oval shape with calibrations to exterior; no 10726 – 4 items  
**\$100 - \$200**

**I230** Mixed lot of 4 Money Boxes inc. 2 x tin boxes, one in the form of a beer barrel circa 1920, one ceramic old miser on chair & one Alf Bank on card – 4 items  
**\$75 - \$150**

**I231** Die-cast Ertl Coca-Cola Polar Bear Mechanical Bank H. 180mm in brilliant white with moving arms, 1995  
Mint in excellent carded box & polystyrene inner  
**\$75 - \$125**



I215



I201



# CONDITIONS OF SALE

NOTE IT IS ASSUMED THAT ALL BIDDERS AT AUCTION HAVE READ AND AGREED TO THE CONDITIONS DESCRIBED ON THIS PAGE. ART+OBJECT DIRECTORS ARE AVAILABLE DURING THE AUCTION VIEWING TO CLARIFY ANY QUESTIONS YOU MAY HAVE.

**1 REGISTRATION:** Only registered bidders may bid at auction. You are required to complete a bidding card or absentee bidding form prior to the auction giving your correct name, address and telephone contact + supplementary information such as email addresses that you may wish to supply to ART+OBJECT

**2 BIDDING:** The highest bidder will be the purchaser subject to the auctioneer accepting the winning bid and any vendor's reserve having been reached. The auctioneer has the right to refuse any bid. If this takes place or in the event of a dispute the auctioneer may call for bids at the previous lowest bid and proceed from this point. Bids advance at sums decreed by the auctioneer unless signaled otherwise by the auctioneer. No bids may be retracted. The auctioneer retains the right to bid on behalf of the vendor up to the reserve figure.

**3 RESERVE:** Lots are offered and sold subject to the vendor's reserve price being met.

**4 LOTS OFFERED AND SOLD AS DESCRIBED AND VIEWED:** ART+OBJECT makes all attempts to accurately describe and catalogue lots offered for sale. Notwithstanding this neither the vendor nor ART+OBJECT accepts any liability for errors of description or faults and imperfections whether described in writing or verbally. This applies to questions of authenticity and quality of the item. Buyers are deemed to have inspected the item thoroughly and proceed on their own judgment. The act of bidding is agreed by the buyer to be an indication that they are satisfied on all counts regarding condition and authenticity.

**5 BUYERS PREMIUM:** The purchaser by bidding acknowledges their acceptance of a buyers premium of 15% + Gst on the premium to be added to the hammer price in the event of a successful sale at auction.

**6 ART+OBJECT IS AN AGENT FOR A VENDOR:** A+O has the right to conduct the sale of an item on behalf of a vendor. This may include withdrawing an item from sale for any reason.

**7 PAYMENT:** Successful bidders are required to make full payment immediately post sale – being either the day of the sale or the following day. If for any reason payment is delayed then a 20% deposit is required immediately and the balance to 100% required within 3 working days of the sale date. Payment can be made by Eftpos, bank cheque or cash. Cheques must be cleared before items are available for collection. Credit cards are not accepted.

**8 FAILURE TO MAKE PAYMENT:** If a purchaser fails to make payment as outlined in point 7 above ART+OBJECT may without any advice to the purchaser exercise its right to: a) rescind or stop the sale, b) re offer the lot for sale to an underbidder or at auction. ART+OBJECT reserves the right to pursue the purchaser for any difference in sale proceeds if this course of action is chosen, c) to pursue legal remedy for breach of contract.

**9 COLLECTION OF GOODS:** Purchased items are to be removed from ART+OBJECT premises immediately after payment or clearance of cheques. Absentee bidders must make provision for the uplifting of purchased items (see instructions on the facing page)

**10 BIDDERS OBLIGATIONS:** The act of bidding means all bidders acknowledge that

they are personally responsible for payment if they are the successful bidder. This includes all registered absentee or telephone bidders. Bidders acting as an agent for a third party must obtain written authority from ART+OBJECT and provide written instructions from any represented party and their express commitment to pay all funds relating to a successful bid by their nominated agent.

**11 BIDS UNDER RESERVE & HIGHEST SUBJECT BIDS:** When the highest bid is below the vendor's reserve this work may be announced by the auctioneer as sold 'subject to vendor's authority' or some similar phrase. The effect of this announcement is to signify that the highest bidder will be the purchaser at the bid price if the vendor accepts this price. If this highest bid is accepted then the purchaser has entered a contract to purchase the item at the bid price plus any relevant buyers premium.

## IMPORTANT ADVICE FOR BUYERS

THE FOLLOWING INFORMATION DOES NOT FORM PART OF THE CONDITIONS OF SALE, HOWEVER BUYERS, PARTICULARLY FIRST TIME BIDDERS ARE RECOMMENDED TO READ THESE NOTES.

**(A) BIDDING AT AUCTION:** Please ensure your instructions to the auctioneer are clear and easily understood. It is well to understand that during a busy sale with multiple bidders the auctioneer may not be able to see all bids at all times. It is recommended that you raise your bidding number clearly and without hesitation. If your bid is made in error or you have misunderstood the bidding level please advise the auctioneer immediately of your error – prior to the hammer falling. Please note that if you have made a bid and the hammer has fallen and you are the highest bidder you have entered a binding contract to purchase an item at the bid price. New bidders in particular are advised to make themselves known to the sale auctioneer who will assist you with any questions about the conduct of the auction.

**(B) ABSENTEE BIDDING:** ART+OBJECT welcomes absentee bids once the necessary authority has been completed and lodged with ART+OBJECT. A+O will do all it can to ensure bids are lodged on your behalf but accepts no liability for failure to carry out these bids. See the Absentee bidding form in this catalogue for information on lodging absentee bids. These are accepted up to 2 hours prior to the published auction commencement.

**(C) TELEPHONE BIDS:** The same conditions apply to telephone bids. It is highly preferable to bid over a landline as the vagaries of cellphone connections may result in disappointment. You will be telephoned prior to your indicated lot arising in the catalogue order. If the phone is engaged or connection impossible the sale will proceed without your bidding. At times during an auction the bidding can be frenetic so you need to be sure you give clear instructions to the person executing your bids. The auctioneer will endeavour to cater to the requirements of phone bidders but cannot wait for a phone bid so your prompt participation is requested.

# ABSENTEE BID FORM

This completed and signed form authorizes ART+OBJECT to bid on my behalf at the above mentioned auction for the following lots up to prices indicated below. These bids are to be executed at the lowest price levels possible.

I understand that if successful I will purchase the lot or lots at or below the prices listed on this form and the listed buyers premium for this sale (15%) and GST on the buyers premium. I warrant also that I have read and understood and agree to comply with the conditions of sale as printed in the catalogue.

Lot no.	Description	Bid max

**PAYMENT AND DELIVERY** ART+OBJECT will advise me as soon as is practical that I am the successful bidder of the lot or lots described above. I agree to pay immediately on receipt of this advice. Payment will be by cash, cheque or bank transfer: I understand that cheques will need to be cleared before goods can be uplifted or dispatched. I will arrange for collection or dispatch of my purchases. If ART+OBJECT is instructed by me to arrange for packing and dispatch of goods I agree to pay any costs incurred by ART+OBJECT. Note: ART+OBJECT requests that these arrangements are made prior to the auction date to ensure prompt delivery processing.

Please indicate as appropriate by ticking the box:      PHONE BID ☐      ABSENTEE BID ☐

MR/MRS/MS: \_\_\_\_\_ SURNAME: \_\_\_\_\_

POSTAL ADDRESS: \_\_\_\_\_

STREET ADDRESS: \_\_\_\_\_

BUSINESS PHONE: \_\_\_\_\_ MOBILE: \_\_\_\_\_

FAX: \_\_\_\_\_ EMAIL: \_\_\_\_\_

Signed as agreed: \_\_\_\_\_

To register for Absentee bidding this form must be lodged with ART+OBJECT prior to the published sale time in one of three ways:

1. Fax this completed form to ART+OBJECT +64 9 354 4645
2. Email a printed, signed and scanned form to: [info@artandobject.co.nz](mailto:info@artandobject.co.nz)
3. Post to ART+OBJECT, PO Box 68 - 345 Newton, Auckland 1145, New Zealand

**ART+OBJECT** 3 Abbey Street, Newton, Auckland, New Zealand. Telephone +64 9 354 4646, Freephone 0800 80 60 01

# CONTACTS



HAMISH CONEY  
Managing Director  
hamish@artandobject.co.nz  
021 509 550



BEN PLUMBLY  
Director Art  
ben@artandobject.co.nz  
021 222 8183



JAMES PARKINSON  
Director Valuations  
james@artandobject.co.nz  
021 222 8184



ROSS MILLAR  
Director Objects  
ross@artandobject.co.nz  
021 222 8185

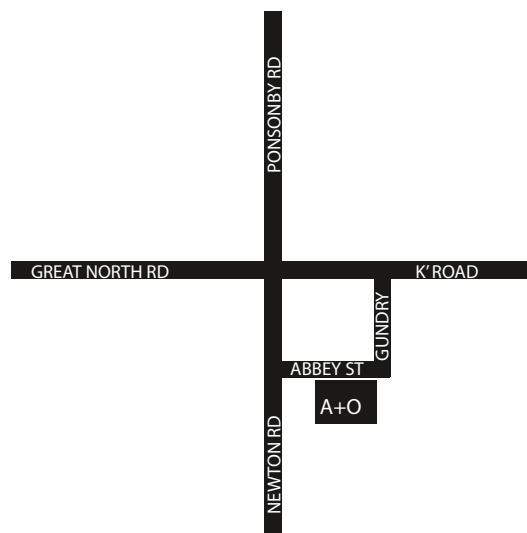


LEIGH MELVILLE  
Front of House Manager  
leigh@artandobject.co.nz  
09 354 4646



GEORGIE CAUGHEY  
Valuation Consultant  
09 354 4646

THE 21<sup>ST</sup> CENTURY AUCTION HOUSE  
ART + OBJECT



3 Abbey Street,  
Newton  
PO Box 68 345,  
Newton  
Auckland 1145,  
New Zealand

Telephone +64 9 354 4646  
Freephone 0800 80 60 01  
Facsimile +64 9 354 4645  
info@artandobject.co.nz  
www.artandobject.co.nz



## **THE JOHN PERRY COLLECTION**

TUESDAY 18<sup>TH</sup> AUGUST 6.30pm

## **NEW COLLECTORS ART**

THURSDAY 20<sup>TH</sup> AUGUST 6.00pm

## **20TH CENTURY DESIGN**

THURSDAY 20<sup>TH</sup> AUGUST 6.45pm

## **THE ROSS SUTTON TOY COLLECTION**

SATURDAY 22<sup>ND</sup> AUGUST 2.00pm

