

Objects of Desire

the unique, esoteric, rare and desirable from all periods

Auction Wednesday 9 December at 6.30pm

Viewing Friday December 4 – Wednesday December 9 2009



Objects & Applied Arts

including the Betty Beadle Estate Collection

Auction Wednesday 9 December at 7.30pm approximately

immediately following the Objects of Desire auction

Viewing Friday December 4 – Wednesday December 9 2009



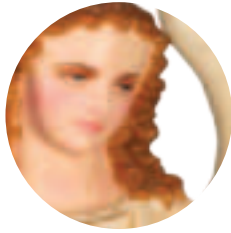
New Collectors Art

Auction Thursday 10 December at 6.30pm

Viewing Friday December 4 – Wednesday December 9 2009

ART+OBJECT
3 Abbey Street
PO Box 68 345
Newton
Auckland 1145

Telephone + 64 9 354 4646
Freephone 0800 80 60 01
Facsimile +64 9 354 4645
info@artandobject.co.nz
www.artandobject.co.nz



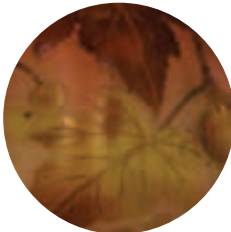
Welcome to Art+Object's exciting new auction category Objects of Desire. Over the last few years we have witnessed an increasing freedom of spirit as collectors seek to juxtapose sleek modernist items with more traditional antiques. This allied to the growing appreciation of fine New Zealand Folk Art has meant that many of the accepted decorating and collecting categories based on chronology have become looser and less defined by genre.

Collecting tastes are becoming more eclectic with a premium placed on the quirky, unique and associated documentary provenance. The ability to directly contextualize to a period, maker or collection is becoming sought after by informed collectors.



Hence the A+O team has undertaken significant research to accompany many pieces in the Objects of Desire catalogue, assisting the collector in understanding context, historical significance and some of the fascinating 'back stories' that these Objects of Desire are informed by and in turn communicate to us in the 21st Century.

Many of these items have been dramatis personae at some of the most significant moments of New Zealand history and internationally. Lot 11 is a case in point, An American Civil War Fife with provenance attributed to a distinct regiment and a well documented battle in 1862.



Closer to home is lot 8, a spectacular 18th century anchor salvaged in New Zealand in the 1920s. Provenance for this work is a little harder to pin down but not completely lost in the mists of time. The design and scale of the piece suggests potential historic sources for this fascinating item. By the way it is not exactly too close to home - at 1.5 tonnes the anchor is too large to be displayed at A+O's gallery. Arrangements will need to be made to view the anchor at its current location within an hour's drive north of Auckland.



Our thanks go to our collector clients who have supported this new auction format by selecting choice pieces from their treasured collections and who have been so assiduous in recording the historic provenance attached to these Objects of Desire.

Collectors fulfil a vital role in not just preserving the physical objects but also collating documentation, anecdotes and historical sources. It is because of their care and diligence that we will be able to pass these narratives to new, enthusiastic guardians.



My business is all about the future.

I'm always thinking about what's going to be right for tomorrow. And that's why I like to surround myself with other forward-thinking brands. The Lexus RX450h, the only luxury hybrid SUV on the market, allows me to travel between my home in the country and design room in the city, in style and comfort, without giving up the earth for it.

Karen Walker

 **LEXUS**
THE PURSUIT OF PERFECTION



A Private Auckland Collection

Auction	Sunday	13 December at 4.00pm
Viewing	Friday	11 December 10am - 4pm
	Saturday	12 December 10am - 4pm
	Sunday	13 December 10am until auction commences



Art+Object is pleased to present a unique auction catalogue on behalf of an Auckland City art collector.

The viewing and auction will be held onsite at 61 Randolph Street, Newton, Auckland.

This is an extremely rare occasion to witness the fusion of architectural space and large scale painting exhibited to striking effect in a domestic environment with gallery characteristics.

The artworks assembled by this collector demonstrates an acute eye – significant and large scale works by Judy Millar, Chris Heaphy, Dale Frank, Gavin Hipkins, Peter Madden, DJ Simpson, Diena Georgetti, and Judy Darragh constitute a significant body of contemporary Australasian art.

The entire art collection and some selected items of designer furniture will be offered at auction on Sunday December 13. A catalogue will be published on December 2.

Until the catalogue is published a selection of installation images can be viewed at www.artandobject.co.nz/news

The interior at 61 Randolph St Newton showing works by Peter Madden, Paul Dibble, D.J. Simpson and Dale Frank



SIGNATURE FOR GOOD. | The ability to read and write is a fundamental human right and the most important asset for children. It is essential for the development of the individual and of society, helping pave the way for a successful and self-determined life.

Deeply committed to the culture of writing, Montblanc is cooperating with UNICEF for the third time. Since 2004 more than US\$1 million has been raised to support UNICEF education programmes worldwide. Part of the proceeds from this Meisterstück special edition will again be donated to UNICEF and its literacy projects, with a minimum amount of US\$1.5 million being guaranteed by Montblanc.

– *The Meisterstück Signature for Good edition has been handcrafted by our master craftsmen in the customary tradition of every Meisterstück since 1924. It features a precious blue sapphire and gold-plated wreath on the cap, and the nib – like every nib created by Montblanc – is perfectly crafted in 35 individual stages, including being ground, polished and tested by hand.* **MONTBLANC. A STORY TO TELL.**



THE PAT NEWMAN COLLECTION FEBRUARY 2010

A+O is pleased to announce a major decorative arts catalogue consisting of vintage motorcycles and parts, rare automata with fascinating and important New Zealand provenance from the 1920s, bank notes, gothic revival organs, music boxes, Victoriana and a collection of over fifty clocks and associated items inc. rare watchmakers and jewelers tools. The sale to be preceded by an uncatalogued section of 200 lots of jewellery, watches and pocket watches.



The Last Supper after Leonardo Da Vinci

An Automation circa 1900 of French manufacture by Henri Phalibois

One of a group of automata brought to New Zealand for a touring exhibition in the 1930s

ART+OBJECT

Specialist Valuer of Taonga Tuturu

ART+OBJECT under New Zealand Property Institute guidance have developed a methodology which reflects the unique cultural and historical aspects of Taonga Tuturu. Additional considerations include the provisions of the Protected Objects Act and guidelines set by the Ministry of Culture and Heritage.

Recent valuations include:

Taonga associated with forty Marae across New Zealand

Museum of New Zealand -Te Papa Tongarewa – special projects

Auckland War Memorial Museum - Tamaki Paenga Hira – special projects

Hawke's Bay Museum & Art Gallery– complete collection of Taonga

New Zealand Historic Places Trust – special projects

The Rotorua Museum - Te Whare Taonga o Te Arawa – complete collection of Taonga

Rotorua District Council Collection

Low Corporation, Hawkes Bay – complete collection of Taonga

To discuss a Taonga Collection Valuation please contact
James Parkinson (MPINZ),
Director Valuations and Collections Management
phone 09 354 4646
james@artandobject.co.nz



Maori and Pacific Artefacts Auction March 2010 – Entries Invited

Already consigned is a Northland collection of Maori artefacts compiled over four decades including hei tiki, stone sinkers, tattoo pot and implements, pa kahawai and other items.

Contact
Ross Millar
09 354 4646, 021 222 2125, ross@artandobject.co.nz
James Parkinson
09 354 4646, 021 222 2124, james@artandobject.co.nz



FINE ART
RESTORATION



WRIGHTWAY
STUDIOS

RESTORATION ARTISTS

LET US MEND YOUR BROKEN ART

175 Morrin Road, Mt Wellington, Auckland. PO Box 25796, St Heliers, Auckland.
Ph: 09 570 5741 / Fax: 09 570 5743 / Mob. 021 633 369 / Freephone: 0800 ART 111
www.restoration-artists.co.nz
Hours: 9 - 5 Mon. - Fri. / 10 - 1 Sat.





part of the Big Clay Out Annual Event

SUNDAY 6TH DECEMBER

96 CAPTAIN SPRINGS ROAD, ONEHUNGA
(opposite Pikes Point Refuse Centre)



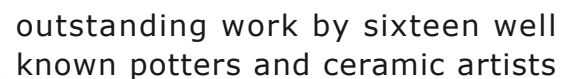
an annual major fundraising event, featuring sales, food activities and fun for the family

inquiries:

www.ceramics.co.nz

09 634 3622

asp@ceramics.co.nz



John Parker
Chester Nealie
Paul Maseyk
Peter Collis
Lex Dawson
Peter Lange
Graham Ambrose
Len Castle

Barry Brickell
Christine Thacker
Duncan Shearer
Katherine Smyth
Ann Verdcourt
Helen Perrett
Rick Rudd
Matt McLean



Objects & Applied Arts

including the Betty Beadle Estate Collection

Auction Wednesday 9 December at 7.30pm approximately
immediately following the Objects of Desire auction

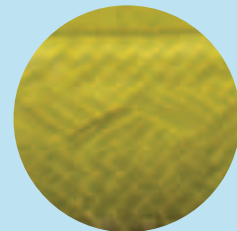
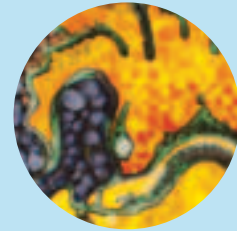
Viewing Friday December 4 – Wednesday December 9 2009

ART+OBJECT
3 Abbey Street
PO Box 68 345
Newton
Auckland 1145

Telephone + 64 9 354 4646
Freephone 0800 80 60 01
Facsimile +64 9 354 4645
info@artandobject.co.nz
www.artandobject.co.nz

Viewing:
3 Abbey Street, Newton, Auckland

Friday	4 December	9am – 5pm
Saturday	5 December	11am – 4pm
Sunday	6 December	11am – 4pm
Monday	7 December	9am – 5pm
Tuesday	8 December	9am – 5pm
Wednesday	9 December	9am – 1pm





109



108



76



99



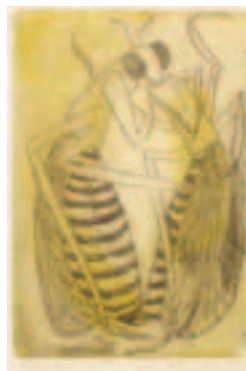
77



133



75



136



85



88

THE BETTY BEADLE ESTATE COLLECTION (1924 - 2002)

Australian born and trained, Betty Beadle (nee Cutcher) began her arts career in sculpture and ceramics in the 1950s. She immigrated to New Zealand in 1965 and was exhibiting sculpture at the Auckland City Gallery Festival Exhibition in 1968 with fellow artist Paul Beadle (later head of the fine arts faculty at Auckland University) whom she would marry. In 1988 with Marian Fountain she co-founded the New Zealand Contemporary Medallion Group, with fellow members Marte Szirmai, Christine Massey, Wallace Sutherland and Terry Stringer later joined by Robert Ellis, Louise Purvis, Jim Wheeler, Michael Reed and Stanley Palmer. The NZMG now numbers about 16 with the majority of working members also belonging to FIDEM (Federation Internationale de la Medaille). In commemoration of the millenium, Beadle produced medallions with other sculptors for an Auckland exhibition and in April this year was shown posthumously in the Medallion Group Show 20th Anniversay Exhibition.

Much of Paul and Betty Beadle's archival material was gifted from their estates to the University of Auckland in 2002. This collection offered here represents a balance of material from Betty Beadle's estate.

75 Bronze sculpture Mating Butterflies 300 x 300mm together with three etchings Butterfly Mating, 4/25, 1990 Butterflies, State I, AP, 1990 Butterflies, 1/10, 1990	82 Pewter and brass component plaque – Birds together with pewter medallion The Pollen Seeker and silver medallion – Bee	89 Two bronze medallions New Zealand Artists No.2, Tony Fomison, 1939-1990 No.3, Philip Clairmont, 1949-1984	95 Catch of the Day etching 6/25 1992 Netted etching 6/25 1994 with medallion Pendulum of Man
76 Bronze sculpture Butterfly H.240mm	83 Bronze oval plaque – Father and Son, 2/12	90 Two bronze medallions New Zealand Artists No.3, Philip Clairmont, 1949-1984 No.5, Patrick Hanly, 1932	96 Woman with Birds etching State 1 Proof 1 Breasting the Waves print 4/25 1993 with medallion Pendulum of Man
77 Bronze plaque The Owl & The Pussy Cat 265 x 200mm	84 Bronze oval plaque – Father and Son	91 The Green Ball monoprint 1993 with two medallions Season of Fruitfulness and the Cat Ensconsed	97 Above the Clouds monoprint 1994 Oops monoprint 1994 with two medallions Ponga Party Season of Fruitfulness
78 Bronze plaque Vale of Tears 165 x 125mm	85 Copper plaque – Pendulum of Man	92 Angel Playing Ball' monoprint with two medallions Season of Fruitfulness and To...Wit, To...Woo	98 Dragonflies etching 1/25 1991 with medallion In Flight 1/12
79 Bronze plaque Monkey and man 195 x 190mm	86 Three Bronze medallions Snail, Palm Trees, Bird over Islands One Silver medallion – Bee	93 Descending Angel monoprint 1994 with medallion Pendulum of Man	99 Pollination etching 6/25 1992 with medallion In Flight 2/12
80 Copper plaque Pendulum of Man 180 x 140mm	87 Three Bronze 'cuttlefish' medallions Emergence, Cat and Bird, Sun and Palms One silver medallion – Bee	94 Woman Take Wing 1 monoprint 1993 with medallion Father and Son 4/12	
81 Pewter and brass component plaque – Birds together with pewter medallion The Flower and The Bee and silver medallion - Bee	88 Five bronze medallions New Zealand Artists Molly Macalister, 1920-1979 No.2, Tony Fomison, 1939-1990 No.3, Philip Clairmont, 1949-1984 No.4, Colin McCahon, 1919-1987 No.5, Patrick Hanly, 1932		

100
Night Visitor
etching 1/25 1991
with medallion
In Flight

101
Monkey
etching 3/25 1995
with plaque
Untitled (Monkey/Ponga Party

102
Green Birds
monoprint 1993
with medallion
Bird and Cat

103
Reach for the Stars
monoprint 1994
with medallion
Woman Take Wing

104
At Sundown
monoprint 1994
with medallion
Woman Take Wing II, 2/12

105
Woman Take Wing I
monoprint 1993
with medallion
Woman Take Wing I, 2/12

106
Woman Take Wing II
monoprint
with medallion
Woman Take Wing II, 1/12

107
Playing with the Moon
monoprint 1994
with medallion
Woman Take Wing I, 1/12

108
Woman Take Wing II
monoprint 1993
with medallion
Woman Take Wing

109
The Fall
monoprint 1994
with pewter plaque
The Fall

110
The Fall
monoprint 1994
with pewter plaque
The Fall

111
Bridal Fall
monoprint 1993
with pewter plaque
The Fall

112
Island
monoprint 1994
with bronze plaque
Vale of Tears

113
The Land of Limbo II
monoprint 1992
with pewter plaque
The Fall

114
Passing by Limbo
monoprint 1994
with bronze plaque

115
Vale of Tears

116
Bird Over Eden 1994
Land of Limbo 1993
Island 1993
Coming Down 1993
Sea Birds 1993
monoprints

117
The Chattering 1993
The Trap 1994
The Owl 1993
Swooping 1993
Hovering 1993
monoprints

118
Nectar Seeker 1992
Cobweb 1993
Moonrise 1993
Bird-Fish 1993
Fishing 1993
Owl 1993
monoprints

119
Deflowering
etching 2/25 1993
with four untitled unsigned monoprints

The following lots are of etchings and
prints editioned and dated as noted

120
Atop the Rock 5/25, 1993
Figurehead 4/25, 1992
Woman with Mat, Proof I
Catch of the Day 4/25, 1992

121
The Predicaments of Venus I, Auckland
Domain 5/15, 1988
The Way of the Cross, 1/25, 1994
Got It!, 1/25, 1994
Watch Dogs, 4/25, 1996
Drawing on the Past, 6/25, 1992
Awaiting a Sultan, 5/25, 1992

122
The Predicaments of Venus, Auckland
Domain, 3/15, 1988
The Way of the Cross, 6/25, 1994
Drawing on the Past, 7/25, 1992
Awaiting a Sultan, 4/25, 1992
The Way of the Cross, 2/25, 1994

123
Cataroo 6/25, 1995
Weeding 2/25, 1993
Deflowering, AP, 1993

124
Pollination II, 3/25, 1993
Weeding AP, 1993
Deflowering, AP, 1993

125
Marauders, 1/25, 1993
Pollination, 2/25, 1993
Weeding 3/25, 1993
Deflowering, 4/25, 1993

126
Seed Shed, 1/25, 1993
Pollination II, 5/25, 1993
Weeding 1/25, 1993
Deflowering, 3/25, 1993

127
Dawn Chorus for 1/1/2000 4/20, 1999
Dawn Chorus for 2000 Ad 5/20
Frog Cycle, State I, 2/25, 1991
Rivals, State II, 5/25, 1992
with three medallions
The Flower and the Bee
To...Wit, To...Woo
The Frog

128
Rivals, State II, 2/25, 1992
Praying Mantis, 2/25, 1992
Night Visitor, State II, 2/25, 1992
Mating Feast, 3/25, 1992
with two medallions
The Flower and the Bee
Pollen Drift

129
Emergence, 2/25
Dancing Mantids, 4/25, 1991
Fluttering Away, AP, 1993
Night Visitor, State II, 7/25, 1992
with two medallions
The Flower and the Bee
Pollen Drift

130
Dragonflies, AP, 1992
Rivals, State II, 6/25, 1992
Praying Mantis, 3/25, 1992
Butterfly Mating, 3/25, 1990
with two medallions
The Flower and the Bee
Pollen Drift

131
Metamorphoses, 5/25, 1992
Dragonflies, State II, 1/25, 1992
Rivals, State II, 4/25, 1992
Dragonflies, State I, 4/25, 1992
with two medallions
The Cat Ensnared
Moon and Tree

132	139	145	152
Emergence, 3/25, 1992	For the Birds, 2/25, 1994	A selection of small etchings and gift/	A selection of small etchings
Night Visitor, State II, 5/25, 1992	The Apple eaters, 2/25, 1994	greetings cards	along with three medallions
Rivals, State II, 1/25, 1992	Snaking Away, 2/25, 1994	along with three medallions	The Mantis
with two medallions: Emergence,	Apples for the Snake, 3/25, 1994	The Frog	The Pollen Seekers
The Pollen Seeker	On the Sea of Knowledge, 4/25, 1994	Night Owl	Season of Fruitfulness
	Snake Games, 1/25, 1994	Mating Butterflies	
133	with two medallions		153
Metamorphoses, 3/25, 1992	Woman with snake		A selection of small etchings
Night Visitor, State I, 1/25, 1992	Snake with Apple	146	along with three medallions
Emergence 4/25, 1992		A selection of small etchings and gift/	The Mantis
with two medallions:	140	greetings cards	The Pollen Seekers
Emergence,	The Apple Eaters, 3/25, 1994	along with three medallions	Woman Riding Snake
Pollen Drift	For the Birds, 1/25, 1994	Mating Butterflies	
	Snaking Away, 3/25, 1994	The Cat Ensnconced	154
134	Apples for the Snake, 4/25, 1994	Night Owl	A selection of small etchings and gift/
Mating Feast, 4/25, 1991	On the Sea of Knowledge, 1/25, 1994		greetings cards
Dancing Mantids 3/25, 1991	Snake Games, 3/25, 1994	147	along with three medallions
with two medallions: The Mantis,	with two medallions	A selection of small etchings and gift/	Dawn Chorus
Pollen Drift	Woman riding snake	greetings cards	Ants
	Snake with Apple	along with three medallions	Night Owl
135		Mating Butterflies	
Praying Manits, 4/25, 1992	141	The Cat Ensnconced	155
Dancing Mantids, AP, 1991	Snaking Away, 1/25, 1994	Night Owl	Five bronze medallions, unpatinated
with two medallions	Apples for the Snake, 5/25, 1994		Y2K (2)
The Mantis	Snake Games, 5/25, 1994	148	NZ sesqui-centennial (2)
Pollen Drift	On the Sea of Knowledge, 3/25, 1994	A selection of small etchings	Tree and Moon (1)
	For the Birds, 4/25, 1994	along with three medallions	
136	with two medallions	The Flower and the Bee	156
Mating Feast 5/25, 1991	Woman riding snake	The Pollen Seekers	Four bronze medallions, unpatinated
Dancing Mantids 2/25, 1991	Snake with Apple	Ponga Party	Bird and Cat
with two medallions			NZ sesqui
The Mantis	142		Ponga Party
Pollen Drift	A selection of small etchings and gift/	149	Akl Childrens Hospital
	greetings cards	A selection of small etchings	
137	along with three medallions	along with three medallions	157
For the Birds, 3/25, 1994	Dawn Chorus	The Cat Ensnconced (2)	Four bronze medallions, unpatinated
The Apple Eaters, 5/25, 1994	Spiders	Season of Fruitfulness	Bird and Cat
Snaking Away, 5/25, 1994	The Mantis	A selection of small etchings	NZ sesqui
Apples for the Snake, 2/25, 1994		along with three medallions	NZ Suffrage centennial
On the Sea of Knowledge, 2/25, 1994	143	The Mantis	Akl Childrens Hospital
Snake Games, 3/25, 1994	A selection of small etchings and gift/	The Pollen Seekers	
with two medallions	greetings cards	Season of Fruitfulness	
Woman and snake	along with three medallions		158
Snake with apple	To Wit...To Woo..	150	Three plaques/medallions
	Dawn Chorus	A selection of small etchings	pewter and brass – Birds
	Spiders	along with three medallions	NZ sesqui
138		The Mantis	Bird and Cat
Snake Games, 6/25, 1994		The Pollen Seekers	
For the Birds, 5/25, 1994	144	Season of Fruitfulness	
The Apple Eater, 1/25, 1994	A selection of small etchings and gift/		159
Snaking Away, 4/25, 1994	greetings cards	151	Various plaques and medallions (8)
Apples for the Snake, 1/25, 1994	along with three medallions	A selection of small etchings	and pieces
On the Sea of Knowledge, 6/25, 1994	Dawn Chorus	along with three medallions	Unpatinated
with two medallions	The Pollen Seekers	The Cat Ensnconced	
Woman with snake	The Mantis	The Flower and the Bee	
Snake with Apple		The Pollen Seekers	

160
Fishing Boats, 3/6 linocut
signed Betty Cutcher
and untitled monochrome watercolour
initialed MB

161
Betty Beadle pottery
ginger jar, two bowls and salt pig

162
various potters,
casseroles (2), storage jar (1), bowls
(3), yunomi (1)

Paul Beadle

163
Untitled- two figures with lance and
basket
bronze

164
Untitled- reclining figure
bronze, 1991

165
Untitled- standing figure with rope
bronze

166
Untitled – bird with rifle
bronze

167
Untitled – figure with bottomless mug
bronze

168
Untitled – Tree of Life
bronze

169
Untitled – Man at his Toilet
bronze

170
Untitled – Two entwined figures
Silver pendent

171
Pan Piper
silver medallion

172
Untitled- Five Angels
silver medallion

173
Australian Neurosurgical Society
Kennedy Jamieson verso
silver medallion

174
Bower Bird
The Arts Edition
two unpatinated bronze medallions

175
D.E.M.S Officer,
HMS Devon
graphite sketch
signed, dated 1940.
entitled on mount

176
Measure for Measure, Dress Rx
two works
(What has he done...A Woman)
(My Unsoiled Name)
ink sketches
signed, dated 1964

177
Four sketches in ink and pencil
Buckminster Fuller, s, d.1964
Lynx, initialed d.1964
Luis Grandon, s, d.1961
Chinese Delegation, s, d.1952

171



163

172



Objects and Applied Arts

178
Len Castle
Branch pot
Impressed with artist's cipher
H.440, W.360mm
\$3000 - \$4500

179
Len Castle
Discoïd Vase
impressed with artist's cipher
H.470mm, W.500mm
\$2000 - \$2500

180
Len Castle
Avian bowl
green talc glazed interior, umber pigmented
exterior
D.400mm
\$1500 - \$2000

181
Len Castle
Sea Secrets
L.200mm
\$400 - \$600

182
Len Castle
Sea Secrets
W.250mm
\$300 - \$400

183
Len Castle
Large baluster pot with talc glazes
H.340mm
\$1250 - \$1750

184
Len Castle
coffee pot with ash glaze and rope
impressed walls
H.205mm
\$200 - \$300

185
Len Castle
Pouring bowl
D.230mm
\$400 - \$500





186
Len Castle
Large bronze/silver lustre speckled bowl
D.520mm
\$1400 - \$1600



187
Len Castle
red glazed hemispherical bowl
D.280mm
\$1000 - \$1500



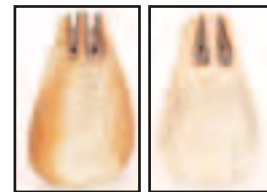
188
Len Castle
square plate with impressed stamped design
180 x 182mm
Cf. Len Castle, *Making the Molecules Dance*, p219
\$250 - \$400



189
Len Castle
Chino glazed vase
H.240mm
\$1000 - \$1250



190
Len Castle
Large spherical flask
H.290mm
\$700 - \$1000



191
Len Castle
grass pot with chino glaze, mid 1960s
H.200mm
\$450 - \$500



192
Len Castle
Chino glazed grass pot
H.210mm
\$500 - \$550

193
Len Castle
chino glazed spherical vase with combing at the foot
and ishihaze to the walls, c.1970s
D.200mm
\$350 - \$500



194
Len Castle
stoneware bottle form grass pot
with sienna pigmented surface, c.1970s
H.165mm
\$300 - \$400



195
Len Castle
talc glazed jug
H.190mm
\$160 - \$300



196
Len Castle
umber pigmented stoneware spike wall vase
H.345mm
\$475 - \$575



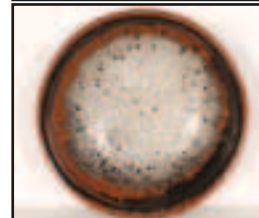
197
Len Castle
sienna pigmented multiple aperture vase
W.150mm
\$400 - \$500



198
Len Castle
chino glazed large jug
circa 1980s
H.275mm
\$375 - \$575

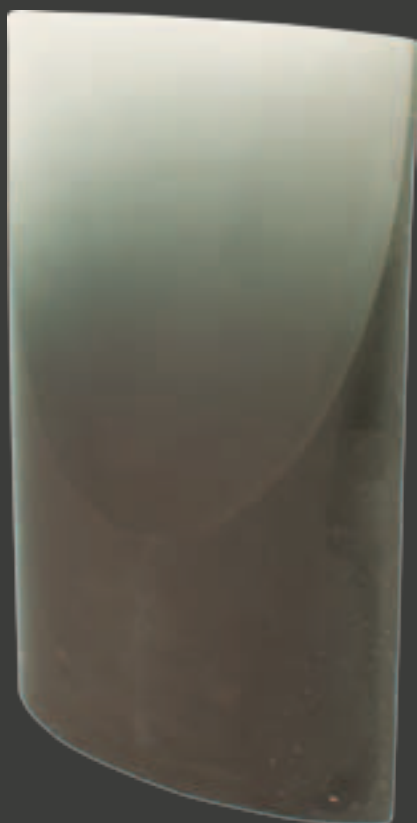


199
Len Castle
iron glazed shallow bowl
D.285mm
\$325 - \$475



200
Len Castle
bowl with crackle and deep pitted centre,
tenmoku exterior
D.250
\$300 - \$450

201
Ann Robinson
Spiral Pod
signed, numbered 6 NZ, dated 2000.
45% lead crystal
285 x 360 x 240mm
\$20 000 - \$30 000



202
David Murray
Hunter 1/11
cast glass
signed, dated NZ '02
460 x 310 x 103mm
\$4000 - \$5000

203
 Wendy Fairclough
 Waiting for Rain
 six cast glass vessels
 tallest 400mm
 Exhibited: Glass Invitational NZ, Auckland Museum, 2005.
 \$8000 - \$10000



204
 Layla Walter
 Woven Rimmed Bowl
 tourmaline coloured cast glass
 120 x 350mm
 \$6500 - \$7500

205
 Emma Camden
 Three 'Towers'
 cast sea green and clear frosted glass.
 H.285mm (tallest)
 \$1500 - \$2000



206
 Ann Robinson
 blown glass flask vase with trailed glass pattern
 H.270mm
 signed and dated NZ 87
 \$3000 - \$4000

207
 Ann Robinson
 blown glass flask vase with Nailsea type pattern
 H.240mm
 unsigned, circa 1987
 \$3000 - \$4000





208
Murano style
Elongated freeform glass dish
765 x 320mm
\$400 - \$500



209
Dino Martens for AVEM
cased glass beaker vase with multi coloured
canes
H.190mm
\$700 - \$1000



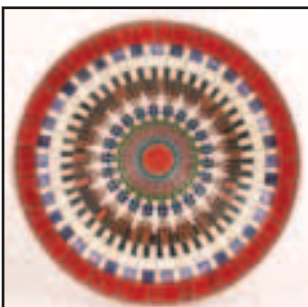
210
Denis O'Connor
Fool Stone (empty-headed)
salt fired swamp clay
signed, dated April 1981 verso
D.375mm
Cf. A+O catalogue 8, Moya Elliot, essay,
pg.65
\$4000 - \$6000



211
Robyn Stewart
Dung fired, hand burnished pot
Carved intaglio to the shoulder with the
Opihi Taniwha
D.320mm
\$2500 - \$3000



212
Wi Taepa
Squat circular vase with deep carved
surfaces
D.330mm
\$1000 - \$1400

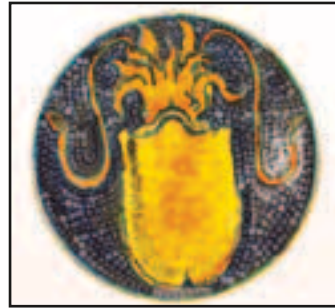


213
Barry Brickell
Spiromorph form
H.660mm
\$950 - \$1400

214
John Crichton
Mosaic Tile Charger
D.560mm
\$2000 - \$2500



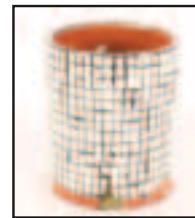
215
Peter Collis
Large turquoise glazed bowl.
D.500mm
\$650 - \$900



216
Poole Studio charger
Squid by Tony Morris
monogrammed TM, 1999
D.410mm
\$1500 - \$2000



217
Martin Poppelwell
Oops
slab built plaque
410 x 330 x 70mm
\$750 - \$1100



218
Martin Poppelwell
Brush pot with trellis pattern
H.190mm
\$300 - \$450

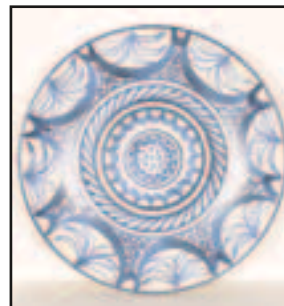


219
Martin Poppelwell
Cartoon plate
D.255mm
\$250- \$350



220
Martin Poppelwell
Spiral painted plate
D.255mm
\$250- \$350

221
Browynne Cornish
Cat woman
H.280mm
\$400 - \$500



222
Frank Carpay for Crown Lynn
Wall plate decorated in underglaze inky blue.
Marked with *Hand werk* cipher and W.P.-1
and Tiki stamp factory mark
D.360mm
\$1900 - \$2200



223
Ernest Shufflebotham for Crown Lynn
rare black hand potted shape 59 vase
unmarked and no incised number
H.240mm
Hairline at rim
\$1000 - \$1500



224
Crown Lynn hand potted vase
Experimental 'hare's foot' glaze
unmarked
H.270mm
\$500 - \$700



225
Edgar Mansfield
Animism
bronze 4/6
H.325mm excluding plinth
\$3000 - \$3500



226
Graham Storm
ovoid pot with deep intaglio carved with flowers
turquoise mat glaze
H.240mm
\$200 - \$300



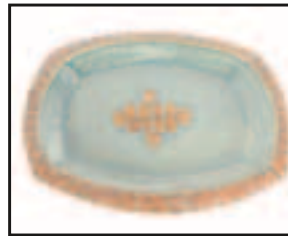
227
Thomas Johnston
Torso
bronze
H.515mm excluding wooden plinth
\$400 - \$500



228
Peter Stichbury
Teapot with cane handle
\$150 - \$200

229
Pamela Howard-Smith
Shrine
mixed media
H.445mm
\$500 - \$600

230
Graeme Priddle
Starfish Vessel (South Pacific Vessel Series)
Australian sheoak, mulga, paua shell, copper
and metallic thread
H.270mm
\$400 - 800



231
Doris Dutch
oblong platter with impressed stamped pattern
\$400 - \$500



232
Ruth Castle
Dyed rattan core woven dish
Sunflower pattern.
D.340mm
\$120 - \$180



233
Ruth Castle
Dyed rattan core woven dish
Sunflower pattern.
D.285mm
\$110 - \$160



234
Ruth Castle
Dyed rattan core woven dish
Star of David pattern.
D.385mm
\$120 - \$180



235
Kelvin Bradford
anagama ovoid vase
H.280mm
\$175 - \$250

236
Kelvin Bradford
anagama square bodied vase
H.170mm
\$200 - \$275

237
Don Thornley
deep bowl with crackle interior, chino exterior
D.245mm
\$200 - \$275



238
Jim Greig
vase of asymmetrical section with combed and
pressed decoration to the walls
H.280mm
\$450 - \$600

239
Neil Grant
tenmoku platter with resist 'calligraphic' decoration to
the centre.
D.345mm
\$300 - \$350



240
Neil Grant
stoneware teapot with cane handle.
decorated to the shoulder with brushwork
blossom design
\$150 - \$200



241
Adrian Cotter
Five bowls, with gestural resist decoration
\$120 - \$200



242
John Parker
Cobalt blue glazed bottle vase
H.200mm
\$300 - \$375



243
John Parker
cadmium/selenium red glazed turned
walled spherical vase
H.190mm
\$200 - 250



244
John Parker
copper/manganese glazed vase with
combed/cut body, c.1980
H.180mm
\$200 - \$250



245
John Parker
bronze glazed flaring mouthed vase
D.170mm
\$200 - \$300



246
John Parker
Two conical totems
H.260mm and H.230
\$300 - \$350

247
Brian Gartside
Three stoneware plates
D.240mm largest
\$150 - \$200

248
Brian Gartside
Three stoneware plates
D.240mm
\$150 - \$200



249
Brian Gartside
Eight small stoneware plates
D.165mm
\$160 - \$220



250
Rosemary Brittain
Chun glazed bowl and small spherical vase
D.190mm (bowl)
\$175 - \$225



251
Warren Tippet
Ovoid vase with gestural resist leaf form to
wall
H.230mm
\$500 - \$600



252
Warren Tippet
small casserole dish (AF) and another
\$50 - \$90



253
Peter Stichbury
Two jugs and a small bowl
\$100 - \$200

254
Unknown artist
gourd engraved with koru patterns
\$200 - \$275

255
Jane Brenkly
Maori Slave Girl
3D carved wood figure on plinth
H.210mm
\$500 - \$700

256
Jane Brenkley
Carved figured lamp base as a Maori warrior
with patu
H. 500mm including shade
\$1500 - \$2000



257
Olive Jones
celadon glazed small koruru head dish.
Incised signature and dated 1940.
H.85mm
\$300 - \$400

258
Briar Gardner
Cylindrical pot
H.110mm
\$100 - \$140

259
Attributed Briar Gardner
small chamberstick
\$40 - \$60

260
Alan Kestle
porcelain ovoid vase
H.120mm
\$50 - \$75

261
Beverley Luxton
porcelain bowl with intaglio landscape
D.105mm
\$40 - \$70

262
Christine Boswijk
large green glazed bowl
and bowl: Unknown potter
\$60 - \$90

263
Barry Brickell
Wine Cup
H.130mm
\$80 - \$100

264
Martin Boyd (Australia)
Plate with aboriginal and small dish with
aboriginal woman
\$100 - \$200

265
Crown Lynn
Squat baluster vase moulded with fish
Faulted.
H.140mm
\$40 - \$60

266
Crown Lynn vase
Attributed to Daniel Steenstra
H.170mm
faulted
\$60 - \$90

267
Crown Lynn white vase
unmarked ,
impressed shape 2070
H.260mm
\$150 - \$200

268
Crown Lynn swan
H.160mm
\$60 - \$100

269
Crown Lynn hand potted vase
Shape 11
H.230mm
\$300 - \$400

270
Crown Lynn
Pot Stand based on the 'Legend'
plaque
145 x 145mm
\$70 - \$100

271
Douglas McCausland
African Study
Rimu. H.345mm
\$800 - \$1000

272
Carver Unknown
Pounamu hei tiki
in carved leather case
H.110mm
\$1500 - \$2000

273
Pakariki Harrison
Pair of carved door handles
970 x 100 x 105mm
\$1000 - \$1500

274
Harland Larsen
'Funky' lamp
H.470mm
\$100 - \$200

275
Harland Larsen
'Robot' lamp
H.510mm
\$100 - \$200

276
John Radford
Rise - Fall
wall mounted relief sculpture
mixed media
930 x 360
\$200 - \$400



264



272



273



275



274

CONTEMPORARY ART+OBJECTS
APRIL 2010 – ENTRIES INVITED



Richard Killeen
Gods of small things
unique print on archival photo paper
2007
1210 x 1150mm
\$14 000 - \$18 000

CONDITIONS OF SALE

NOTE IT IS ASSUMED THAT ALL BIDDERS AT AUCTION HAVE READ AND AGREED TO THE CONDITIONS DESCRIBED ON THIS PAGE.
ART+OBJECT DIRECTORS ARE AVAILABLE DURING THE AUCTION VIEWING TO CLARIFY ANY QUESTIONS YOU MAY HAVE.

1 REGISTRATION: Only registered bidders may bid at auction. You are required to complete a bidding card or absentee bidding form prior to the auction giving your correct name, address and telephone contact + supplementary information such as email addresses that you may wish to supply to ART+OBJECT

2 BIDDING: The highest bidder will be the purchaser subject to the auctioneer accepting the winning bid and any vendor's reserve having been reached. The auctioneer has the right to refuse any bid. If this takes place or in the event of a dispute the auctioneer may call for bids at the previous lowest bid and proceed from this point. Bids advance at sums decreed by the auctioneer unless signaled otherwise by the auctioneer. No bids may be retracted. The auctioneer retains the right to bid on behalf of the vendor up to the reserve figure.

3 RESERVE: Lots are offered and sold subject to the vendor's reserve price being met.

4 LOTS OFFERED AND SOLD AS DESCRIBED AND VIEWED: ART+OBJECT makes all attempts to accurately describe and catalogue lots offered for sale. Notwithstanding this neither the vendor nor ART+OBJECT accepts any liability for errors of description or faults and imperfections whether described in writing or verbally. This applies to questions of authenticity and quality of the item. Buyers are deemed to have inspected the item thoroughly and proceed on their own judgment. The act of bidding is agreed by the buyer to be an indication that they are satisfied on all counts regarding condition and authenticity.

5 BUYERS PREMIUM: The purchaser by bidding acknowledges their acceptance of a buyers premium of 15% + Gst on the premium to be added to the hammer price in the event of a successful sale at auction.

6 ART+OBJECT IS AN AGENT FOR A VENDOR: A+O has the right to conduct the sale of an item on behalf of a vendor. This may include withdrawing an item from sale for any reason.

7 PAYMENT: Successful bidders are required to make full payment immediately post sale – being either the day of the sale or the following day. If for any reason payment is delayed then a 20% deposit is required immediately and the balance to 100% required within 3 working days of the sale date. Payment can be made by Eftpos, bank cheque or cash. Cheques must be cleared before items are available for collection. Credit cards are not accepted.

8 FAILURE TO MAKE PAYMENT: If a purchaser fails to make payment as outlined in point 7 above ART+OBJECT may without any advice to the purchaser exercise its right to: a) rescind or stop the sale, b) re offer the lot for sale to an underbidder or at auction. ART+OBJECT reserves the right to pursue the purchaser for any difference in sale proceeds if this course of action is chosen, c) to pursue legal remedy for breach of contract.

9 COLLECTION OF GOODS: Purchased items are to be removed from ART+OBJECT premises immediately after payment or clearance of cheques. Absentee bidders must make provision for the uplifting of purchased items (see instructions on the facing page)

10 BIDDERS OBLIGATIONS: The act of bidding means all bidders acknowledge that they are personally responsible for payment if they are the successful bidder. This includes all registered absentee or telephone bidders. Bidders acting as an agent for a third party must obtain written authority from ART+OBJECT and provide written instructions from any represented party and their express commitment to pay all funds relating to a successful bid by their nominated agent.

11 BIDS UNDER RESERVE & HIGHEST SUBJECT BIDS: When the highest bid is below the vendor's reserve this work may be announced by the auctioneer as sold ' subject to vendor's authority' or some similar phrase. The effect of this announcement is to signify that the highest bidder will be the purchaser at the bid price if the vendor accepts this price. If this highest bid is accepted then the purchaser has entered a contract to purchase the item at the bid price plus any relevant buyers premium.

IMPORTANT ADVICE FOR BUYERS

THE FOLLOWING INFORMATION DOES NOT FORM PART OF THE CONDITIONS OF SALE, HOWEVER BUYERS, PARTICULARLY FIRST TIME BIDDERS ARE RECOMMENDED TO READ THESE NOTES.

(A) BIDDING AT AUCTION: Please ensure your instructions to the auctioneer are clear and easily understood. It is well to understand that during a busy sale with multiple bidders the auctioneer may not be able to see all bids at all times. It is recommended that you raise your bidding number clearly and without hesitation. If your bid is made in error or you have misunderstood the bidding level please advise the auctioneer immediately of your error – prior to the hammer falling. Please note that if you have made a bid and the hammer has fallen and you are the highest bidder you have entered a binding contract to purchase an item at the bid price. New bidders in particular are advised to make themselves known to the sale auctioneer who will assist you with any questions about the conduct of the auction.

(B) ABSENTEE BIDDING: ART+OBJECT welcomes absentee bids once the necessary authority has been completed and lodged with ART+OBJECT. A+O will do all it can to ensure bids are lodged on your behalf but accepts no liability for failure to carry out these bids. See the Absentee bidding form in this catalogue for information on lodging absentee bids. These are accepted up to 2 hours prior to the published auction commencement.

(C) TELEPHONE BIDS: The same conditions apply to telephone bids. It is highly preferable to bid over a landline as the vagaries of cellphone connections may result in disappointment. You will be telephoned prior to your indicated lot arising in the catalogue order. If the phone is engaged or connection impossible the sale will proceed without your bidding. At times during an auction the bidding can be frenetic so you need to be sure you give clear instructions to the person executing your bids. The auctioneer will endeavour to cater to the requirements of phone bidders but cannot wait for a phone bid so your prompt participation is requested.

ABSENTEE BID FORM

Auction No 33 December 2009 OBJECTS OF DESIRE, OBJECTS AND APPLIED ARTS, NEW COLLECTORS ART

This completed and signed form authorizes ART+OBJECT to bid on my behalf at the above mentioned auction for the following lots up to prices indicated below. These bids are to be executed at the lowest price levels possible.

I understand that if successful I will purchase the lot or lots at or below the prices listed on this form and the listed buyers premium for this sale (15%) and GST on the buyers premium. I warrant also that I have read and understood and agree to comply with the conditions of sale as printed in the catalogue.

Lot no.	Description	Bid max
_____	_____	_____
_____	_____	_____
_____	_____	_____
_____	_____	_____
_____	_____	_____
_____	_____	_____
_____	_____	_____
_____	_____	_____

PAYMENT AND DELIVERY ART+OBJECT will advise me as soon as is practical that I am the successful bidder of the lot or lots described above. I agree to pay immediately on receipt of this advice. Payment will be by cash, cheque or bank transfer. I understand that cheques will need to be cleared before goods can be uplifted or dispatched. I will arrange for collection or dispatch of my purchases. If ART+OBJECT is instructed by me to arrange for packing and dispatch of goods I agree to pay any costs incurred by ART+OBJECT. Note: ART+OBJECT requests that these arrangements are made prior to the auction date to ensure prompt delivery processing.

Please indicate as appropriate by ticking the box: PHONE BID ☐ ABSENTEE BID ☐

MR/MRS/MS: _____ SURNAME: _____

POSTAL ADDRESS: _____

STREET ADDRESS: _____

BUSINESS PHONE: _____ MOBILE: _____

FAX: _____ EMAIL: _____

Signed as agreed: _____

To register for Absentee bidding this form must be lodged with ART+OBJECT prior to the published sale time in one of three ways:

1. Fax this completed form to ART+OBJECT +64 9 354 4645
2. Email a printed, signed and scanned form to: info@artandobject.co.nz
3. Post to ART+OBJECT, PO Box 68345 Newton, Auckland 1145, New Zealand

ART+OBJECT 3 Abbey Street, Newton, Auckland, New Zealand. Telephone +64 9 354 4646, Freephone 0800 80 60 01

ARTISTS INDEX

APPLE, BILLY	457	LEWER, RICHARD	385, 389
ARIS, BERNARD	469, 472, 473, 474	LLOYD, TREVOR	402, 403, 404, 405, 406, 407, 408
ARTIST UNKNOWN	438		468
BAMBURY, STEPHEN	329	LOVELL-SMITH, COLIN	435
BOROUGHs, JUSTIN	322	MADDOX, ALLEN	335
BRAITHWAITE, JOANNA	317	MAGAZINES ETC	485, 486, 487, 488
BROMLEY, DAVID	372, 376	MATCHITT, PARATENE	428
BROWN, NIGEL	393, 441	MAUGHAN, KARL	308, 476
BROWN, HELEN	482	MCCAHERN, COLIN	332
BURNETT, FASSETT	343	MERVYN-TAYLOR, E.	418
CAMPBELL, BRIAN	360	MILLAR, JUDY	333
CLAIRMONT, PHILIP	361, 444	MORIARTY, P.A.	463
CAUCHI, BEN	450	NAMOK, ROSELLA	447
CAXTON PRESS	484	NGAN, GUY	446, 369, 370
CHILCOTT, GAVIN	327	OGDEN, SIMON	413
COLE, RUTH	324	OLSEN, MARIA	411
COTTON, SHANE	397, 475	PALMER, STANLEY	319, 381, 466
COUPER, MATT	301	PAYNE, DAVID	409, 410
CROOK, GORDON	357, 358, 477	PERYER, PETER	449, 453
DAGLEY, ARTHUR	465	PICK, SERAPHINE	420
DALI, SALVADOR	414	PULE, JOHN	375, 445
DAVIES, PERRY	342, 359	REYNOLDS, JOHN	330, 315, 459
DOLEZEL, JENNY	340, 347, 364, 480	RITCHIE, ROSS	309
DRAWBRIDGE, JOHN	355	ROBINSON, PETER	442
DRIVER, DON	345	SIDDELL, PETER	419, 436
ELLIS, ROBERT	368	SMITH, PETER JAMES	440
FAHEY, JACQUELINE	399	SMITHER, MICHAEL	302, 339, 398, 470
F'EAU, FATU	392, 422	SPICER, PEGGY	415
FIELD, TOM	458	STEVENS, EION	326
FLETCHER, GRAHAME	384	STEVENS, KATHRYN	380
FOMISON, TONY	395, 396	STRINGER, TERRY	365
FRIZZELL, DICK	323, 373, 374, 377, 378, 382, 394, 429, 454, 455, 478	SYDNEY, GRAHAME	320, 337, 356
	421, 430	THOMPSON, NELSON	462
FRASER, JACQUELINE	363	THOMSON, ELIZABETH	318
FUMPSTON, RODNEY	386	TOMKINS, RIDUAN	316
GEORGE, DARRYN	412	TRUSTTUM, PHILIP	417, 479, 481
GIBSON, ROBYN	312, 331, 423, 425, 426	VAN DER PLOEG, JAN	443
GIMBLETT, MAX	325	WALSH, JOHN	321, 388
	310, 311, 383	WALTERS, GORDON	354
GOLDBERG, SUZANNE	448, 471	WATKINS, DENYS	303, 305, 307, 341, 467, 439
HAMMOND, BILL	306, 338, 344, 437		451
HANLY, PAT	328, 334, 346, 371	WEBSTER, CHRISTINE	483
HARRIS, JEFFREY	366, 367	WEDDE, IAN	460, 461, 464
HARTIGAN, PAUL	390	WHEELER, COLIN	314, 348, 349, 350, 351, 352, 353
HELLYER, CHRISTINE	313, 427, 433	WHITE, ROBIN	400
HONOUR, BASIL	434		304
HOTERE, RALPH	456	WILLIAMS, MERVYN	336, 362
HUTCHISON, LONNIE	401	WOODING, NORMAN	416
INGRAM, SIMON	379, 387, 424	WOMBLE, FRANK	
JACKS, ROBERT		YATES.P	
KILLEEN, RICHARD			

CONTACTS



HAMISH CONEY
Managing Director
hamish@artandobject.co.nz
021 509 550



BEN PLUMBLY
Director Art
ben@artandobject.co.nz
021 222 8183



JAMES PARKINSON
Director Valuations
james@artandobject.co.nz
021 222 8184



ROSS MILLAR
Director Objects
ross@artandobject.co.nz
021 222 8185



LEIGH MELVILLE
Front of House Manager
leigh@artandobject.co.nz
09 354 4646

3 Abbey Street
PO Box 68 345
Newton
Auckland 1145
New Zealand

Telephone +64 9 354 4646
Freephone 0800 80 60 01
Facsimile +64 9 354 4645
info@artandobject.co.nz
www.artandobject.co.nz

