



THE NEWMAN COLLECTION

THE COLLECTION OF A LIFETIME!

A Major Collectables & Decorative Arts Event

Auction Saturday 6 March from 12 noon at ART+OBJECT

3 Abbey Street, Auckland, New Zealand

Rare Automata * Vintage Motorcycles
Victorian Gothic Organs * Clocks * Radios

Jewellery * Pocket Watches * Sterling Silver

Arts & Crafts * Art Nouveau * Art Deco

Oceanic Artefacts * Tapa * Folk Art * Kiwiana * Taxidermy

Victorian Medical Equipment * English & Oriental Furniture

Ecclesiastical Items Apothecary's Boxes Modernist Furniture Matchbox Toys

Vintage Photography * Antique and Retro Lighting * '40s NZ Graphic Art

Pottery and Porcelain * Costume Jewellery * Bank Notes * Posters

Music Boxes * Oriental Ceramics * Glass * Crown Lynn

OVER 800 LOTS TO BE AUCTIONED – MANY AT NO RESERVE!

VIEWING OPENS SUNDAY 28 FEBRUARY AT 11AM

THEN THROUGH THE WEEK 9AM - 5PM



J.P. (PAT) NEWMAN

THE NEWMAN COLLECTION - A JOURNEY OF LIFE

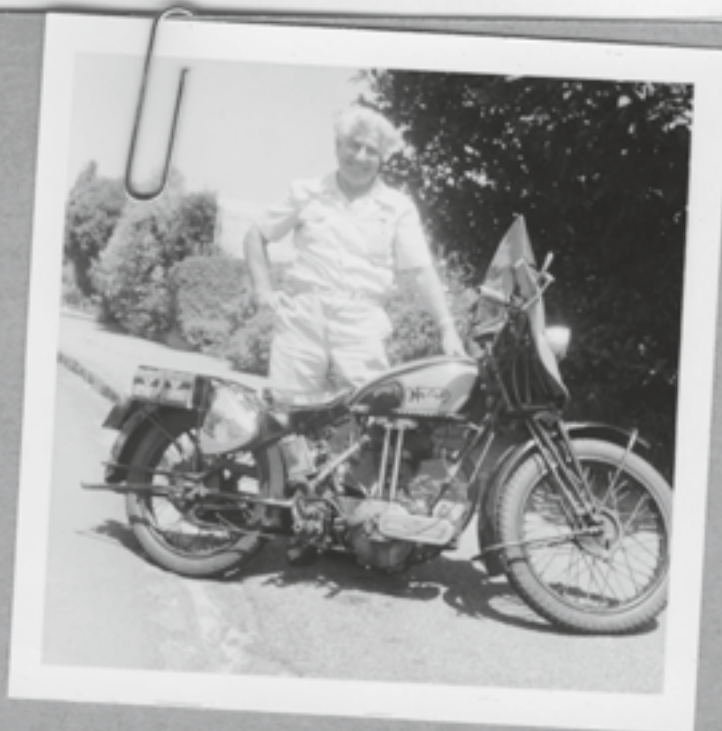
At ART+OBJECT we have the pleasure of meeting many collectors and through their collections understanding their interests and passions. Pat Newman 1918 - 2009 was such a collector. A fascination with mechanical machinery was an abiding passion for Pat. In this catalogue we can see an extraordinary range of automata, motorbikes, clocks and gizmos.

Pat started his working life at the age of 16. He went through a number of jobs in his early years and it was while milking cows, that Pat managed to put together enough money to buy his first motorcycle, which initiated a long love of motorbikes.

Pat eventually took work as an apprentice jeweller and watchmaker, following a childhood dream at age five, after seeing a man make a ring from a penny. It was around 1936 that Pat met Rona and they married in 1941. They owned a very successful shop first in Dominion Road and then in Queen Street. Pat and Rona collected many clocks during their lifetime and many of them are being auctioned with The Newman Collection.

Another passion of Pat's was music. At age five he saw a fair ground organ and made a pact with himself that one day he would own one. Pat managed to fulfil his dream but sold the organ a number of years ago. He also collected musical boxes, gramophones and other mechanical musical items. His absolute pride and joy was the automaton the Lords Supper purchased as part of a collection of automata touring New Zealand in the 1920's.

Pat was a man who didn't like to see anything thrown away that might be useful, and ended up a collector of just about everything. This catalogue is evidence of a lifetime passion of collecting everything and anything that captured Pat and Rona's interest.



THE NEWMAN COLLECTION

ARTEFACTS

DECORATIVE & APPLIED ARTS

SATURDAY 6 MARCH 12 NOON

ART+OBJECT

3 ABBEY STREET, NEWTON
PO BOX 68 345, NEWTON
AUCKLAND 1145

TEL: + 64 9 354 4646

FREE: 0800 80 60 01

FAX: 64 9 354 4645

INFO@ARTANDOBJECT.CO.NZ

WWW.ARTANDOBJECT.CO.NZ

| | |
|-----------|-------------|
| SUNDAY | 28 FEBRUARY |
| MONDAY | 1 MARCH |
| TUESDAY | 2 MARCH |
| WEDNESDAY | 3 MARCH |
| THURSDAY | 4 MARCH |
| FRIDAY | 5 MARCH |
| SATURDAY | 6 MARCH |

11AM – 4PM

9AM – 5PM

9AM – 5PM

9AM – 5PM

9AM – 5PM

9AM – 5PM

LIMITED VIEWING

VIEWING

Note: The A+O carpark will be closed during the viewing of the Pat Newman Auction

- 1
Diamante bracelets and earrings.
- 2
Costume brooches, pendants and chain.
- 3
Diamante and brass vintage costume brooches.
- 4
9ct gold narrow wedding bands.
- 5
Diamante brooches pendent and earrings.
- 6
Three marcasite brooches and 2 pair of earrings.
- 7
9ct gold locket and 2 pendants.
- 8
Vintage motorcycle brooch and stick pin.
- 9
Sterling silver bracelet and earrings.
- 10
Vintage costume bracelets and bangles.
- 11
3 sterling silver lockets with bow brooches.
- 12
Bag of vintage watches.
- 13
Vintage New Zealand kiwi cigarette table lighter.
- 14
9ct gold and sterling silver lockets with brooch fittings & 2 ceramic pendants.
- 15
2 Chinese boy vintage brooches and a cockerel.
- 16
Marcasite ring.
- 17
9ct gold and onyx dress ring.
- 18
9ct gold dress ring – blue stone.
- 19
9ct gold and onyx dress ring.
- 20
Gold and silver lockets and pendant with blue stone.
- 21
Sterling silver and gold lockets with and S/S cufflinks.
- 22
Sterling silver and enamel blue bird brooch.
- 23
Sterling Silver tiki bracelet.
- 24
6 Sterling silver medals including a gold and silver cricket medal
- 25
Sterling silver tiki pendent.
- 26
Sterling silver and paua heart necklace and matching earrings.
- 27
Silver foil “crinoline” lady brooch and enamelsilver parrot brooch.
- 28
2 Sterling silver bracelets one with matching earrings.
- 29
6 sterling silver and gold lockets 4 with bow brooches.
- 30
Vintage sterling silver wishbone pendant, monkey marcasite brooch and penguin pendent.
- 31
Filigree costume brooch and pendant with turquoise stones.
- 32
Old watches and parts.
- 33
Bag of vintage costume brooches, pendants and earrings.
- 34
3 lockets and 2 pendants.
- 35
Sterling silver and gold lockets with with bow brooches.
- 36
5 9ct gold tiepins.
- 37
Vintate sterling silver and gold lockets on chains and 1 ceramic pendant.
- 38
3 sterling silver and 1 gold locket with bow brooches.
- 39
3 brass and diamante vintage costume brooches.
- 40
3 9ct gold and 1 S/Slocket and 1 ceramic & S/S pendant.
- 41
Sterling silver tiepins, cufflinks, studs etc.
- 42
Sterling silver tiki pendant.
- 43
Turquoise and silver necklace.
- 44
Charm bracelet, butterfly wing brooch, S/S & enamel parrot brooch and lockets.
- 45
Sterling silver tiki pendant.
- 46
6 vintage costume brooches and 1 pendant.
- 47
3 9ct gold lockets and brooch fittings, 2 pendants and a kiwi brooch.
- 48
5 lockets, with 4 bow brooch fittings and 1 ceramic brooch.
- 49
Bag of military badges and buttons.
- 50
2 9ct gold rings with green and blue stones.
- 51
2 9ct gold opal dress rings.
- 52
2 9ct gold dress rings – opal and green stones.
- 53
2 9ct gold dress rings – onyx and peridot.
- 54
2 9ct gold dress rings with blue and green stones.
- 55
2 9ct gold dress rings – opal and blue stones.
- 56
2 9ct gold dress rings – amber and green stones.
- 57
4 vintage diamante brooches, 9 ct gold locket and 2 pendants.
- 58
Sterling Silver tiki brooch with inlaid paua.

59
Bag of vintage brooches and pendants.

60
Diamante spider brooch, crystal beads and 2 other brooches.

61
3 bar brooches and a pendant.

62
5 vintage costume brooches.

63
Sterling silver and rolled gold charms, silver pill box etc.

64
Bag of costume brooches and earrings.

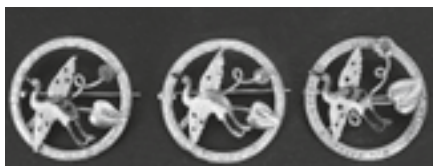
65
6 vintage costume brooches.

66
Sterling silver and paua necklace.

67
9ct gold and sterling silver brooches and locket.

68
15 narrow gold wedding rings.

69
Sterling silver and enamel brooch.
see col ill pg 9



70
Sterling silver and enamel brooch.
see col ill pg 9

71
4 silver and gold lockets, brooch and medal.

72
Bag of old watches and parts.

73
Sterling silver tiki pendant.

74
Sterling silver tiki pendant.
see col ill pg 9



58 74 81 92

75
Penguin pendant and sterling silver and enamel bird brooch.

76
Sterling silver tiki pendant.

77
2 Sterling silver bracelets and S/S locket on bow brooch.

78
Costume brooches and pendants.

79
Sterling silver pendant and a fern brooch.

80
Rotary watch advert penknife.

81
Sterling silver tiki pendant.
see col ill pg 9

82
Sterling silver tiki pendant.

83
Sterling silver locket on bow and roll gold pendant.

84
Sterling silver and enamel brooch.

85
Sterling silver and enamel brooch.
see col ill pg 9

86
Sterling silver & 9ct gold lockets with bow brooches and s/s bracelet.

87
2 vintage costume and a cameo brooch.

88
Sterling silver Scottie dog brooch and a pair of sterling silver cuff links.

89
19th century boars tusk brooch with 9ct gold mounts

90
15ct gold bar brooch in original box.

91
18ct gold ladies key wind fob watch.

92
9ct gold tiki pendant. see col ill pg 9

93
Tin of costume jewelley and parts.

94
Box silver pocket watches and parts.

95
Bag of watch parts.

96
Costume brooches.

97
Box of watch bands and chain.

98
Wooden box of earrings and sundry costume jewellery and parts.

99
Half doll [telephone cover]

100
5 novelty vintage brooches in original case.

101
Box of pocket watches.

102
Large number of old watches and parts.

103
9ct gold carved shell cameo brooch.



103 104 105 106
107 109 110 111 112
see colour illustration pg 9

104
9ct gold carved shell cameo brooch.

105
9ct gold carved shell cameo brooch.

106
9ct gold carved shell cameo brooch.

107
9ct gold framed carved shell cameo

108
Small 9ct gold lined carved shell cameo.

109
Large unmounted carved shell cameo

110
Oval unmounted carved shell cameo

111
Small unmounted oval carved shell cameo – classical head

112
Small unmounted oval carved shell cameo – classical head

113
9ct gold snake ring Snake by Pat Newman

114
9ct gold knot ring by Pat Newman

115
9ct gold gents signet ring by Pat Newman.

116
9ct gold and greenstone tiki ring.

117
9ct gold buckle ring by Pat Newman.

118
9ct gold plait ring by Pat Newman.

119
Silver and kauri gum brooch with embedded flower.

120
3 five pound notes.

122
3 five pound notes.

123
3 five pound notes.

124
3 five pound notes.

125
3 five pound notes.

126
3 five pound notes.

127
3 five pound notes.

128
2 five pound notes.

129
2 five pound notes.

130
1 five pound note.



130

131
1 five pound note.

132
Box of old wrist watches and parts.

133
Large box of old pocket watches and parts.

134
2 9ct gold dress rings with opals.

135
Vintage Mackitrite pricing kit.

136
A Danish Jorgen Jensen 1960s pewter pendant and two other pendants

137
Two Danish Jorgen Jensen 1960s pewter pendants

138
Victorian silver muff chain set at intervals with links modelled as souvenirs of a visit to Italy; a papal crest, 2ndC Roman comic theatre masks, Romulus and Remus supping, Roman legion standard, etc \$150 - \$250

139
Gold and silver contemporary pendant set with cut green stone and riven surfaced translucent green stone \$50 - \$100

140
Carved wood tekoteko figure. Y14097 Carved in the round with moko to the face and buttocks, incised across the chest 'Tama Hiri', the figure stands in flexed stance holding a taiaha. Painted ochre all over with hair and moko details in black, the incised name picked out in white. H.630mm. Some restoration
Ref: Dunbar Sloane Ltd *The John Gow Folk Art Collection* auction May 27 2003. see col ill pg 9
\$12000 - \$14000



140

141
Maori Carved Totara Totemic Smoker's Stand Y13991, from the Rotorua Bath House, c.1930s. Four carved tiki figures, back to back, tongues protruding, all with crossed legs, sitting atop a base carved with four faces, all eyes are inset with paua shell. H.750 x 140mm square. \$2000 - \$3000



141

142
Canoe paddle (hoe) Y14101 mid-brown wood with lanceolate blade, with some losses to edges, the cylindrical shaft with a simple terminal knob. L.1570mm, W.134mm \$200 - \$400 see col ill pg 9

143
Taiaha Y14102 red-brown wood, the blade with squared off end, the head with incompletely carved details, the tongue with notch and lineal carved surface. Wood filler in natural faults at head to shaft junction. L.1582mm \$200 - \$400 see col ill pg 9

144
Tewhatewha, Y14104, red-brown wood, the blade extension pierced with small hole for feather attachment (absent), the tapering shaft carved with a profile weku head towards the terminal end, with inlaid paua shell ring eyes. L.1301mm, W.163mm \$800 - \$1000 see col ill pg 9

left to right

142

144

143



145

Canoe paddle (hoe), Y14103, dark stained wood. lanceolate shaped blade decoratively carved with a central tiki figure with inset paua eyes, tongue extended hands to abdomen; two profile heads infill the blade above and below. The reverse with an incised kowhaiwhai pattern modified to fit the blade. The shaft carved with a single figure beneath an uncarved grip. L.1160mm, W.113mm \$800 - \$1000 see col ill pg 9

145



151

20th Century Wahaika, mid-brown wood, possibly teak. Typical shape with figure carved in the round to the blade edge. The grip and butt pierced with three holes, one appearing as the eye of a low relief 'neede' carved to the grip and lower blade. L.406mm, W.135mm. Not registered \$100 - \$200 see col ill pg 9

151



156

Food bowl (kumete). Y7351 Mid-brown wood with dark patina, adzing evident on exterior and to well. Side wall considerably broken out. \$100 - \$200

157



146

Dried gourd carved with incised kowhaiwhai design modeified to fit the ovoid shape and curving neck. The interior hollowed through a fitted glued plug. H.380mm. Not registered \$400 - \$600

147

Two vintage poi, Y12879 raupo with overlaid dyed muka. \$100 - \$200

148

Adze blade (toki), Y14105 Greywacke, quadrangular, all over pecked finish incompletely polished out, gently curved bevel, L.266mm \$100 - \$200

149

2 Adze Blades. Y14106, Y14095 Argillite, quadrangular. L.160mm Argillite, quadrangular. Broken and reglued. L.130mm. \$50 - \$100

150

2 Adze Blades Y14107, Y14108 and an unworked adze shaped piece of stone Argillite, quadrangular with flaked poll and pecked body, partially polished bevel L.246mm. Argillite, triangular section flaked al over and partially polished L.180mm, \$50 - \$100

152

20th century Wahaika, light brown wood, possibly cedar, the blade edge carved with a protruding figure whose limbs appear in low relief on the blade surface. Butt knob carved as a simple profile head, pierced with a small hole fitted with plaited flax cord. L.401mm, W.135mm. Not registered \$50 - \$100

153

Bone comb (heru), with 15 closely spaced tines issuing from a body decoratively incised to one face with double spiral motif, one end swelling to from a curlicue koru. Not registered \$100 - \$150

154

20th century patu, light brown wood with green stain, the blade with raised axial rib and puhoro design again defined by raised detail, similarly decorated to the grip. L.405mm, W.116mm. Not registered \$50 - \$100

155

Pigeon Trough (waka kereru), Y14109. Mid-brown wood, rectangular with reduced dimension lashing extensions protruding either end, the well roughly hewn and broken out in part to one wall, the rim broken away opposite. Overall considerably weathered. L.1605mm, W.153mm, D.125mm \$300 - \$400

157

3 Fern root pounders (patu aruhe). Y14096, Y14110, Y14111 Dense dark brown wood with some patination, conical shape with tapering curved grip terminating in notched 'paw' end. L.371mm, Dia.80mm. see col ill pg 9 Light dark brown wood with orange (rust?) patination and fire blackening, torpedo shape. L.362mm, Dia.66mm. Dense dark brown wood, tapering elongated ovoid. Large beetle damage to body. L.310mm \$200 - \$300

158

6 greywacke, quadrangular section adze blades Y14112, Y14113, Y14114, Y14115, Y14116, Y14117. i) tapering pecked lateral sides, chipped. L.195mm, W.80mm. ii) tapering, overall matt polish, slight chipping. L.130mm, W.67mm. iii) L.142mm, W.54mm. iv) L.137mm, W.54mm. v) veined stone, some pecking not polished out. L.132, W.52mm. vi) tapering. L.136mm, W.47mm. \$150 - \$200

159

5 Adzes and piece of saw cut nephrite, 106 x 41 x 16mm Y14118, Y14119, Y14120, Y14121, Y14122 i) argillite, quadrangular section, slightly tapering, L.192mm. contd...

- ii) greywacke, quadrangular, tapering. flake chip to side L.135mm,
 - iii) greywacke, quadrangular, lightly veined stone. L.114mm.
 - iv) greywacke, quadrangular, unpolished to one side. L.124mm
 - v) argillite, quadrangular, patina from fire, cracked and reglued, L.110mm
- \$150 - \$200

160

6 Adzes Y14123, Y14124, Y14125, Y14126, Y14127, Y14128

- i) greywacke, quadrangular, pecking remnants, chipped. L.159mm.
 - ii) dark greywacke with small inclusions, quadrangular. L.141mm
 - iii) greywacke fine grained with veining, quadrangular. L.149mm
 - iv) greywacke, quadrangular, overall matt polish. L.121mm.
 - v) greywacke, quadrangular. L.111mm
 - vi) argillite, quadrangular, tapering. L.75mm
- \$150 - \$200

161

4 Adzes Y14129, Y14130, Y14131, Y14132

- i) greywacke, formed from broken patu onewa blade section, reworked with bevel. L.146mm, W.64mm
 - ii) greywacke, quadrangular, blunted bevel and chipped poll, L.134mm.
 - iii) greywacke, quadrangular, fine pecking partly polished. L.114mm
 - iv) argillite, quadrangular, L.68mm.
- \$150 - \$200

162

5 Adzes Y14133, Y14134, Y14135, Y14136, Y14137

- i) greywacke, quadrangular, partially and roughly worked. L.140mm
 - ii) greywacke, quadrangular, L.62mm
 - iii) dark greywacke, quadrangular, chipped at poll and bevel. L.109mm
 - iv) greywacke, quadrangular section, reworked steep bevel. L.88mm.
 - v) greywacke, quadrangular section, trauma chipped bevel. L.93mm.
- \$150 - \$200

163

Y14138

Small anchor stone, greywacke, flattened oval shape with pecked lashing scarves either side at the approximate midpoint. L.310mm, W.173mm, D.67mm

\$100 - \$200

164

Five 20th century bone pendants – two hei matau and three manaia, in various levels of finish. Not registered

\$200 - \$250

165

Y14139

Cloak pin (aurei), fashioned from a cut and polished whale's tooth, pierced with straight drilled suspension hole. L.83mm see col ill pg 9

\$100 - \$150



165

166

Y14140, Y14141, Y14142, Y14143, Y14144

Tooth section pierced for suspension. L.35mm

Bone spear point with five barbs. L.86mm

Bone needle, broken and reglued, point broken (absent) L.127mm

Bone needle broken in two, overall L.72mm

Bone needle point only. L.45mm

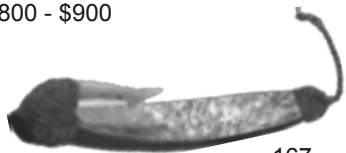
\$100 - \$150

167

Trolling lure (pa kahawai). Y14145

Dark wooden shank with inset paua face, bone barbed point with muka binding, muka snood lashing with small remnant of snood line. L.112mm (excl line). see col ill pg 9

\$800 - \$900



167

168

Pre-European hei tiki, Y reg of auhunga variety pounamu. Modelled with chin angled to left shoulder, semi-concealed hour-glass suspension hole, ring eyes inlaid with paua, hands to thighs. H.111mm

\$8000 - \$9000

see col ill pg 9



168

169

Adze, Y14146 pounamu (auhunga variety, pale milky), quadrangular section, tapering to poll, chipping to lateral sids. L.145mm, W.71mm

\$50 - \$100

169A

Adze, Y14147 and Gouge, Y14148

i) pounamu (kawakawa variety, dark green with pale inclusions), quadrangular section, working scarves to one lateral side, poll curving dramatically to one lateral. L.150mm, W.47mm

ii) pounamu (kawakawa variety)

section only, quadrangular section with working scarves to each lateral side, broken at poll and later drilled, broken at bevel and reworked.

\$200 - \$250 see col ill pg 9



169A

170

Kuru pendant, Y14149 bowenite, straight sided, oval section, drilled with hourglass suspension hole. L.109mm, W.20mm. see col ill pg 9

\$200 - \$250



170

171

Pendant, Y14150 nephrite, flattened oblong shape pierced with asymmetrical suspension hole. L.50mm, W.19mm

\$50 - \$100

172

Kuru pendant Y14076, nephrite, straight sided, rounded ends, countersunk drilled suspension hole. L.73mm, W.11mm

\$100 - \$150

173

Bird leg ring (kaka paira). Y14077 Distinctly laminar nephrite, possibly split between laminations and reglued, the leg hole with beveled edges, the securing hole straight sided. 31mm x 27mm

\$200 - \$250

174

Hei tiki, Y14078 dark green pounamu. Suspension hole broken out, ring eyes inset with red sealing wax. head modelled with chin to left shoulder, hands to thighs. H.106mm, W.65mm.

contd.....



... along with a dark stained wooden cigarette box, the hinged lid carved with a weku head and whorl carving, possibly by Rangi Stevens. 134 x 100 x 45mm
\$2000 - \$2250

175

i) Y14079 Greywacke boulder, with naturally water and pebble eroded well forming a cup, subsequently used as a pigment mortar.

ii) Y14080, Tattoo chisel (uhi), bird bone, with 7 teeth L.60mm, W.12mm

iii) Y14081 Tattoo chisel of bird bone, 3 teeth. L.53mm, W.7mm

iv) Y14082 Tattoo chisel, bird bone, 6 teeth with broken tips, broken lashing notches at end. L.32mm, W.9mm.

v) Y14083 Tattoo chisel, bird bone, untoothed cutting edge. L.36mm
\$350 - \$400

176

Grindstone (hoanga) Y1408
Sandstone boulder, flattened oval shape with shallow worked depressions to anterior and posterior sides. 345 x 215 x 120mm
\$300 - \$400

177

Digging stick (ko) Y14085. Swamp recovered, grey-brown wood, long tapering shape with flattened side to blade area. L.1495mm
\$50 - \$100

178

Fishing net sinker (mahe) Y14086. Greywacke, ovoid with suspension lug pierced with a large hole tapering in from either side. Pecked and partially polished surfaces. H.100mm, W.76mm. see col ill pg 9
\$150 - \$250

178



179

Ovoid sinker stone Y14097, drilled with a suspension hole.
\$200 - \$275

180

2 fishing sinkers Y14087 Y14098

i) volcanic stone, oval, encircling pecked lashing scarf on long axis. L.95mm, W.72mm

ii) volcanic stone, encircling pecked lashing scarf on long axis. L.89mm, W.58mm
\$150 - \$200

181

Flax pounder (patu muka) Y14088 greywacke with iron oxide colouration, conical with rounded distal end and slight butt knob. pecked all over with abraded sections. L.325mm, W.105mm
\$250 - \$350

182

Flax pounder (patu muka) Y14089 greywacke, conical with rounded distal end and swollen butt knob. Heavily pecked all over. L.285mm, W.80mm
\$250 - \$350

183

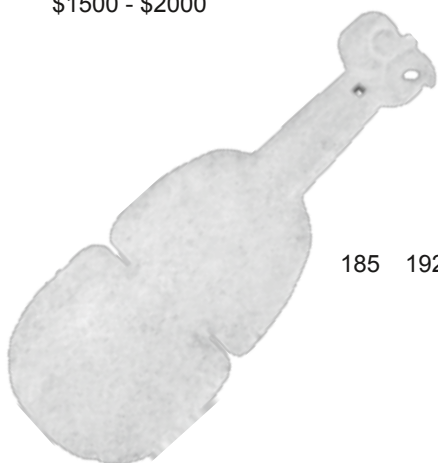
Flax pounder (patu muka) Y14090 greywacke, conical with rounded distal end and slightly defined grip. L.207mm, W.89mm
\$100 - \$150

184

Flax pounder (patu muka) Y14091 greywacke, roughly cylindrical with flattened distal end and reduced grip, the butt knob carved as an incipient head. Heavily pecked all over. L.315mm, W.85mm
\$250 - \$350

185

Whalebone kotiate Y14092 Lightly weathered bone, small frits to blade edges, sulci defined by narrow notches, grip pierced with square hole, terminating in a flattened profile weku head as butt knob. L.317mm, W.117mm. see col ill pg 9
\$1500 - \$2000



185 192

188

Adze, Y14093, greywacke, quadrangular, flaked sides and poll except mostly polished side and bevel. L.190mm, W.66mm
\$50 - \$100

189

Very small argillite adze Y14098
\$30 - \$60

190

Alfred Burton (Burton Bros., Dunedin) 3607—*Te Hauhau At Te Kuiti—King Country* Gelatin silver print, circa 1885.

Laid on reverse of glass plate and hand coloured from the reverse. Entitled in the plate.

Plate size 180 x 134mm.
\$200 - \$300

191

Thomas Lindsay Buick (1865-1938) *Te Hauhau*,

oil painting on canvas, after the Burton Bros photograph of the same.

Signed and dated 1890.
315 x 235mm
\$400 - \$500

192

Allan Baldwin, *Marohia Kupe of Otorohunga*.

Moko by tohunga Anaru Makiwhara Vintage silver gelatin portrait photograph.

360 x 390mm
\$700 - \$1200
see col ill pg 12



193

Allan Baldwin, *Marohia Kupe* Vintage silver gelatin portrait photograph.
490 x 390mm
\$700 - \$1200

194

Allan Baldwin, *"Ebb Tide"* Vintage silver gelatin photograph of Kirikino Kohitu Epiha of Honikiwi. Moko by tohunga Anaru Makiwhara entitled and signed verso
510 x 340mm
\$500 - \$800

195

Allan Baldwin, *Kaumatuia No 1*
Vintage carbon print
Title inscribed and signed verso
500 x 400 mm
\$700 - \$1200

196

Allan Baldwin, *Tiripau Haerewa of Ruatahuna*
Vintage carbon print portrait
Moko by Tama Poata & Kotahi Tana, circa 1920
The image with numerous prize certificates attached verso
490 x 390 mm
\$500 - \$800

197

Hawkes Bay News Photo Service photograph, inscribed verso: *Mr and Mrs FD Robson attach the wooden leg [to a kiwi]. Mr Robson is the curator of the game farm.* 160 x 213mm
\$50 - \$100

198

NZ Herald Photograph, untitled [*Four Square Stores manager and workers with truckload of foodstuffs to City Missioner?*] 155 x 210mm
\$50 - \$10

199

Photograph of the Chateau Tongariro, circa 1932.
\$50 - \$75



202

200

Hand-coloured photo of St James Chapel, Franz Josef by R. Warburton.
\$150 - \$250

201

A framed souvenir tea towel of Waiho Chapel, Franz Josef Glacier.
\$50 - \$100

202

Denis Knight Turner
Rock Designs
pencil on paper
260 x 205mm
\$600 - \$800
see col ill pg 12

203

Maori folk art jewellery box, all over gouged surface decorated with carved bas relief figures and motifs; four tiki figures define the corners, the hinged lid with a carved whale's tooth handle. W.360mm
\$800 - \$1200
see col ill pg 12



203

204

Samoa kava bowl (*tanoa fai'ava*), vesi wood, raised on twelve cylindrical legs and with simple suspension lug beneath the rim, D.390mm
\$600 - \$800
see col ill pg 12



204

205

A Late 19th Century Kava Bowl, the underside surface textured with a carving tool and carved with an angular suspension lug. The unusual bowl free-standing without legs. Bowls without legs have been recorded in the pre-missionary Cook Islands and Savaii, Samoa and occasionally in Fiji. Evidently they stood with sand or earth heaped around the base. Diam.565mm. H.120mm. see col ill pg 12
\$1000 - \$1500



205

206

A Samoa kava bowl, fine grained vesi wood, raised on four tapering conical legs, with triangular suspension lug beneath the rim. D.560mm, H.120mm
\$500 - \$700

206A

Lime pestle, 2 lime gourds and coconut in sennit binding. All ex The Mair Collection, Whangarei Museum
\$100 - \$200

207

Sedreniwaiwai (priests oil dish) Fiji. Dark hardwood (vesi) double bowled united by a carved bar handle. With short legs. L. 460mm. see col ill pg 12
\$100 - \$200



207

208

Priest's oil dish, Fiji, dark hardwood, single leaf shaped bowl with single handle extending from one end. L.320mm
\$200 - \$300

209

New Britain Island mace club, with unusually two stone heads, a pineapple shaped one at the extreme end and a discoid one to the shaft immediately below that.
\$800 - \$1200

210

New Britain Island single headed mace club, the ovoid stone head pieced and secured to the long tapering shaft.
\$600 - \$1000

211

An African 'spider-legged' bowl or compote. The four angular recurved legs with striped decoration in imitation of a tarantula support an asymmetrical shallow dish. W.285mm
\$400 - \$500

212

Soloman Islands paddle, with carved and painted leaf shaped blade and trapezoidal shaft terminal
\$400 - \$600

213

Soloman Islands paddle similar to above
\$400 - \$600

214

Carved rimu wall mask of a Maori man with moko and huia feather in his hair. $\frac{3}{4}$ profile. Stained painted and polished. H.250mm
\$500 - \$600
see col ill pg 12



214



192



222



202



246



214



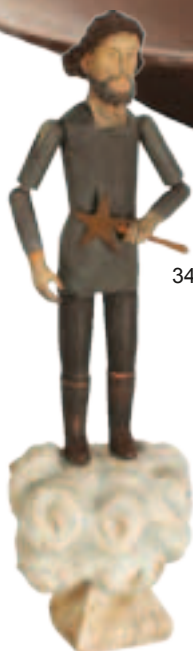
218



207



205



346



252



347



341



204



203



243



527



257



300A



325



421



332



334



333

331



327



329



328

215

Carved rimu wall mask of a Maori woman with moko and red headscarf. $\frac{3}{4}$ profile. Stained painted and polished. H.247mm
\$500 - \$600

216

no lot

217

Carved kauri wall mask of a Maori woman with moko and huia feather in her hair. Stained painted and polished. H.225mm
\$500 - \$700

218

Kauri gum carved portrait wall plaque bust of a Maori woman
see col ill pg 12



218

219

Junghams timepiece fitted into a folk art carved whare, made entirely without glue and nails
\$100- \$200

220

A New Zealand Maori folk art lamp, carved as Janus facing tekoteko figures, each with inset paua shell eyes. H. 600 mm
\$350 - \$500

221

Pair of kauri door handles carved by Pakiariki (Paki) Harrison (1928-2008) carved with ruru type heads with long organic tongues issuing from their mouths to form the door pulls. 980 x 100mm
\$600 - \$750

222

1950s circular coffee table the top carved intaglio with a Maori ruru head with paua shell eyes on a field of curvilinear double spiral and koru motifs, raised on three legs with complimentary carving. D.560mm
\$400 - \$500



222

see col ill pg 12

223

Old Fijian tapa cloth, with stenciled decoration. 55cm x 265cm
\$400 - \$500

224

Samoaan tapa cloth decorated with a field of 16 panels with crescent and circular shapes. 150cm x 150cm
\$300 - \$400

225

Old Tongan tapa cloth decorated with a field of 36 panels with triangular forms. 135 x 186mm
\$300 - \$400

226

Large old Tongan tapa in contemporary frame, 1750 x 2800mm overall
\$1000 - \$2000

227

\$200 - \$300

228

A good African Dan tribal mask with slit eyes and broad nose above almond shaped lips. Circa 1930.
\$400 - \$600

229

Set of three Jim Beam bourbon musical decanters modelled as the chiefs Hongi Hika, Hone Heke and Te Rauparaha. With original sing tag labels.
\$300 - \$400

230

Dark stained wooden lidded box carved all-over with Maori notch and lineal designs
\$100 - \$150

231

Paua shell tray and assorted glasses

232

Pair of New Zealand bookends

233

Three Indian hand block fabric printing blocks
\$100 - \$150

234

Papua New Guinean necklace of boar tusk sectioned into rings and gathered on plaited sennit.
\$50 - \$100

235

A necklace of Chinese archaic archeological recovery tubular /bugle beads celadon/jade pottery
\$40 - \$70

235A

3 pieces of turtle shell
\$150 - \$200

236

Sumbawa, Indonesia, woven rattan bag with carved wooden mounts
\$60 - \$110

237

Japanese carved ivory netsuke, of a palanquin bearer, seated on his own seat. Signed with inlaid red lacquer tablet underneath.
\$250 - \$300

238

Indonesian woven rattan betel nut container
\$25 - \$50

239

Japanese bamboo ikebana vase

240

Two small ivory carvings of Buddha
\$200 - \$250

241

Maori folk art carved wooden trough vase modelled after a canoe prow
\$100 - \$150

242

Chess set in a rimu box carved with Maori design to the lid
\$100 - \$150

243

Jane Brenkley jewellery box, carved as a wakahuia. The hinged lid with a relief tiki figure whose body is defined by a paua shell. The walls carved with weku heads. The interior lid painted, signed and dated 1946 and inscribed 'Kia Ora Ka Toa' 330 x 150mm
\$1800 - \$2200
see col ill pg 12



243

244

A carved Maori figure by Jane Brenkley inscribed to the base "Maori Slave Girl". H. 200 mm
\$350 - \$500

245

A rare Maori folk art lamp by Jane Brenkley, carved with a warrior figure in relief holding a patu. Unsigned. H. 500 mm
\$1200 - 1500

245A

Puka and cowrie shell necklaces, wooden comb and piece of worked turtle shell. All ex The Mair Collection, Whangarei Museum
\$100 - \$200

246

A souvenir ware mantel clock by Wiremu Kutuheri carved as a kiwi and chick surmounting a log with inset square faced timepiece W. 330mm, see col ill pg 12
\$800 - \$1200



246

247

A set of three carved kauri logs by Wiremu Kutuheri of graduated size each surmounted by a kiwi.
\$500 - \$700

248

A New Zealand centenary 1840-1940 exhibition chest. The top with circular rondel with centenary exhibition bird insignia. The four corners of the lid carved with Maori figures each with hands to abdomen and protruding tongues and with inset paua shell eyes. The front and back panels with conforming carving. The side handles carved as wheku heads and the block form feet carved in the form of manaia.
\$1500 - \$2000

249

A set of New Zealand centenary bakelite ashtrays together with 3 other Bakelite ashtrays.
\$20 - \$40

250

An unusual brown and white bakelite kookaburra cigarette dispenser.
\$40 - \$60

251

A pair of New Zealand moulded resin book ends each in the form of a crouching Maori warrior holding a taiaha [faulted]
\$50 - \$80

252

A New Zealand folk art painted tin boat model of the S.S. Selwyn. W.450 mm
\$400 - \$500

253

A vintage movie poster "Spiderman Strikes Back". 1000 x 670 mm
\$350 - \$500

254

A rare French vintage movie poster, Stanley Kubrick's *A Clockwork Orange* [*Orange Mecanique*] issued by Warner Bros in 1971. The film screened in France on release but was initially banned in other countries around the world. 1600 x 1160 mm
\$500 - \$800
see col ill pg 33



254

255

A vintage "Star Wars" movie poster issued in 1977 by 20th Century Fox. 1950 x 1040 mm.
\$400 - \$600

256

A vintage movie poster "One Flew Over the Cuckoos Nest" starring Jack Nicholson.
\$50 - \$100

257

A rare Beatles coloured vinyl picture disc album "Sergeant Pepper's Lonely Heart Club" complete in original record sleeve.
\$400 - \$800
see col ill pg 13



257

258

Peter A. Reed
Untitled futuristic female study.
Gouache on paper
Signed and dated 1959.
670 x 500 mm
\$400 - \$600

259

A 1950's framed Maori cave art enamel panel.
\$100 - \$200

260

Unusual rubber film prop model of a shrunken Maori head with ta moko. L.120 mm
\$200 - \$300

261

Taniwha Products of New Zealand, Taniwha soap in original packaging. L. 370 mm
\$80 - \$120

262

World War two prisoner of war souvenir poker game cased in a Silver Fern cigarette box together with a trench art cigarette box.
\$150 - \$250

263

1012/72

New Zealand shell painted with a scene of a ship at sea together with another shell decorated with pennant flags and inscribed Best Wishes.
\$80 - \$120

264

1950's pottery jarlet the lid decorated with a tiki figure.
\$50 - \$100

265

New Zealand kauri gum easel.
\$150 - \$250

266

S.S. Monowai ship in a bottle.
\$80 - \$140

267

New Zealand painted kauri folk art tray
\$30 - \$50

268

1970's decorative pottery tiki model on a cork backing.
\$150 - \$250

269

New Zealand carved totara and paua shell Wheku head ashtray.
\$150 - \$250

270

Collection of Maori plastic folk art dolls together with a kete.
\$200 - \$300

271

New Zealand brass folk art letter opener, the handled modelled in the form of a Maori warrior
\$50 - \$100

272

1950's resin bust of a young Polynesian woman.
\$80 - \$120

273

1950's coffee table, the top with inset enamel plaque with Maori rock cave drawings.
\$400 - \$600



485



304



303



440



438



439



500

465



479



432



456



498



476



326

389



480



473



481



468



470

469



274
New Zealand folk art table lamp modelled as a carved Teko Teko figure with protruding tongue and paua shell eyes and with Kowhaiwhai cloth shade.
\$500 - \$800

275
Gilt metal bracelet decorated with New Zealand motifs.
\$50 - \$80

276
1920's New Zealand folk art plaque painted with a tekoteko figure with a kowhaiwhai pattern border. 600x290mm
\$600 - \$800

277
Sharlands *Moa* concentrated egg preserve tin together with a collection of Moa gizzard stones.
\$50 - \$100

278
Pair of Pitcairn Island cups, modelled as beakers held by hands, both marked Made By Tommy Warren, Souvenir From Pitcairn Island
\$200 - \$300

279
Moa pelvis section. L. 370 mm
\$500 - \$800

280
Coat rack formed of eight bullock horns
\$400 - \$500

281
Mounted set of New Zealand Wapiti horns.
\$300 - \$400

282
Pair of New Zealand moose horns.
\$500 - \$800

283
Taxidermy model of a New Zealand Kereru mounted on a wooden plaque.
\$400 - \$600

284
Three large 'nuggets' of kauri gum
\$300 - \$400

285
Ruth Castle rattan onion basket
\$40 - \$60

286
1950's Pacific inspired black and yellow necklace.
\$150 - \$250

286A
Fijian kava bowl, c.1930-40s
\$90 - \$150

287
Dallas Seccombe-Young
Little Big Voice
carved sculptural relief panel
1130 x 2390mm
\$100 - \$300

288
Pair of Victorian miniature leather shoes.
\$150 - \$250

289
Two Americana painted bisque negro figures, one a figure of a lady with hands placed to hips and the other a young boy with a hen.
\$200 - \$300

290
An Early English Oak framed Watson's Scotch whisky pub mirror. Circa 1920.
\$500 - \$800

291
Pair of carved Balinese figures of a young male and female, the female wearing a headdress.
\$350 - \$500

292
Triang Minor tractor model, painted green and yellow
\$500 - \$700

293
Tonka fire truck
\$100 - \$150

294
1920's goods trolley from Gummers Hardware Ltd, 151 Queen St. L.900mm
\$500 - \$800

295
Circular 1950's mirror with acid etched decoration of two nesting tuis
\$80 - \$120

296
Pocket watch wall clock.
\$350 - \$500

297
15th century Si Satchanalai Kendi with large bulbous spout and incised floral decoration. H.230
\$400 - \$600

298
A Mataban Kendi ochre glazed with incised floral decoration. H.280mm
\$350 - \$500



298

297

299
16th century Sawankhalok lidded jarlet together with a 16th century celadon glazed funerary jar and a 16th century Annamese jarlet
\$140 - \$190

300
Turkish Canakkale pottery jug, with siphon spout, braided handle, applied rosettes and brush painted decoration over the green glaze. 19th century. H.375mm
Cf. www.seramik.kaleicimuzesi.com/
\$75 - \$150

300A
Four Victorian pottery carpet bowls
\$100 - \$150
see col ill pg 13



300A

300B
A tortoise shell object - a codpiece? ex The Mair Collection, Whangarei Museum
\$100 - \$200

301
Large 19th century Moroccan baluster two handled ewer vase, decorated in underglaze blue and sgraffito with interlocking boteh motifs to the body. Raised on a circular spreading foot. H.485mm
\$1250 - \$1750

302
Moroccan Fez earthenware faience charger decorated with a curvilinear pattern in blue brushpoint to the shallow well. A deep footring to the back pierced for suspension. Dia.450mm
\$800 - \$1200

303

A rare Flight and Barr inkstand with detachable taper nozzle, c.1800/1810, painted on the front with a dead goldfinch with bright yellow wing tips, flanked by two quiver shaped penholders and two spout shaped holders at the back, with loop handle with fish head picked out in gilt. 14cm dia. Sepia mark: Crowned Flight & Barr/ Worcester/ Manufacturers to their Majesties. Inkwell liner restored and cover absent. Ref: Flight and Barr Worcester Porcelain 1783-1840, pl.38 for the shape, see col ill pg 16 \$5500 - \$6000



303

304

Royal Worcester painted by Harry Davis with three black faced sheep on a heather strewn hillside and rocky crags beside a loch emerging through the mist. Ovoid shape (2304) with trumpet neck and conforming pedestal base. Two handles to the side. Puce mark, circa 1910. H.225mm, see col ill pg 16 \$13,500 - \$15,000



304

305

Royal Worcester jug with naturalistic gilded handle painted with summer flowers on a blush ground. Puce factory mark to base \$300 - \$400

306

Royal Worcester potpourri vase. The pierced lidded vase with putti mask supported on the wings of an eagle raised on a circular spreading foot. Blue factory mark to base \$300 - \$400

307

Pair of Royal Worcester vases. Squat ovoid form painted with flowers and fruit \$300 - \$400

308

Hadley's Worcester table jardinière Painted with roses in the manner of Millie Hunt. Printed and painted marks. D.130mm \$250 - \$350

309

Dresden lidded jewellery box profusely decorated with all over floral transfer pattern \$75 - \$125

310

Royal Vienna style tazza painted with three bacchalian maidens by E. Fischer (small chip to foot rim) \$100 - \$200

311

Two early 19th century wine glasses \$30 - \$50

312

Georgian style cut glass decanter, small chip to underside \$40 - \$50

313

Late 19thC Bohemian white overlaid lidded glass vase decorated with flowers and featuring gilded highlights \$100 - \$200

314

Five Victorian green glass wine glasses \$140 - \$160

315

Six Victorian green glass wine glasses \$150 - \$190

316

Cut glass pedestal dish 75 - \$100

317

Heavy moulded glass stemmed rummer \$40 - \$60

318

French white overlay green glass vase \$80 - \$120

319

An Italian 1960s art glass vase, green tinted with internal white striations \$30 - \$40

320

Pair of cut crystal vases and lidded honey pot \$45 - \$60

321

18th century jelly glass. Vase shape with cutting, raised on a hexagonal foot. \$40 - \$60

322

A Royal Doulton Kingsware Dewar's Whisky jug. h.220mm \$300 - \$400

323

19thC Crown Derby milk jug \$30 - \$60

324

English 1930's *Mikaido* character jug. \$80 - \$120

325

Carved ivory portrait of a man, $\frac{3}{4}$ profile, wearing a tricorner hat, 18th century, oval wooden framed. 87 x 72mm, see col ill pg 13 \$200 - \$300



325

326

Florentine Cantagalli majolica squat circular teapot decorated with a hare and a boar. Faults, see col ill pg 16 \$400 - \$450



326

327

19th Century apothecary's cabinet. Mahogany, with dispensary bottles enclosed in fitted interior. Secret opening to rear, see col ill pg 13 \$3000 - \$3500



327

- 328
19th Century surgeons field case. Mahogany, with a large selection of instruments, syringes and associated medical material, see col ill pg 13 \$2250 - \$3000



328

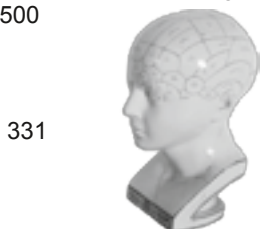
- 329
19th Century apothecary's box. Mahogany, with selection of dispensary bottles including two in turned boxwood protective sleeves, marked Alan and Hanburg. \$1200 - \$1800



329

- 330
Early 20th Century nurses dispensing box, Oak, fitted with various contents including scales, mortar and pestle. \$200 - \$300

- 331
Victorian phrenological bust inscribed with the various phrenological facilities. Faulted, see col ill pg 13 \$350 - \$500



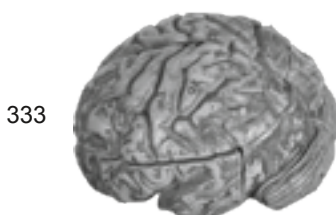
331

- 332
Rare Edwardian period doctor's human medical skeleton model mounted on a stand. H.1650mm \$3000 - \$4000 see col ill pg 13



332

- 333
Sectioned Victorian papier maché doctor's anatomical model of a brain. L. 170 mm, see col ill pg 13 \$800 - \$1200



333

- 334
Unusual composite and rubber forensic head model, inset with one glass eye. Raised on a wooden plinth see col ill pg 13 \$400 - \$600



334

- 335
Three 19th century glass apothecary jars. Marked "Cactus", "Morphine" and "Cannabis" \$200 - \$300

- 336
Late 19th century apothecary's jar Marked "Finest Glycerine". \$50 - \$100

- 337
Late Victorian glass syringe in original wooden case. \$60 - \$100

- 338
An Edwardian anatomical wall chart by Ruddiman, Johnston and Co, London. H.1580 W.530mm \$400 - \$600

- 339
Glass specimen jar with a preserved specimen of a coast horned lizard. \$350 - \$350

- 340
Four specimen jars each containing preserved lizards. \$20 - \$30

- 340A
Assorted medical glass ware and 2 carafes with tumblers. \$40 - \$80

- 340B
Rudolf Winkel, Gottingen dissecting microscope, with two multiple rotating lenses giving 12 magnifications. Rack and pinion adjusted black stage and gimbal-mounted mirror \$500 - \$750

- 341
Victorian Admiral Fitzroy barometer in oak case. see col ill pg 12 \$1100 - \$1500



341

- 342
Gun case with *Lavengro* in gilt on glass inset panel to the lid, with accompanying poster advertising the *Lavengro Gipsies, Sharpshooters Extrordinaire*

- 343
Pinchin Johnson 'Super Finishes, Colour Scheme Displayer' a portable interior decorators set in a valise sized case. Magnetic colour schemes and furniture allow alternate displays to be 'built' \$500 - \$600

- 344
Cased brass telescope with tripod table stand. 3' main barrel marked T Peacock & Son, Auckland and conforming label in the case lid. Thomas Peacock was an immigrant instrument maker, c.1862 and importer; mayor of Auckland 1878/79 and MP 1881/90. The instrument has accompanying lenses and extension tubes. \$1000 - \$1400

- 344A
Hand coloured map *Merionith Comitatus olim pars Ordovicum* (County Durham) by Christopher Saxtion and William Kip from the 1637 edition of Campden's *Britannia*. In gilded moulded frame. 260x320mm \$550 - \$800

- 344B
Orbis Terrarum Nova et Accuratissima Tabula by Pieter Van der Aa, circa 1715. Double hemisphere world map depicting California as an island, *Compagnies Land* separating Asia from North America, and partial coastlines for Australia and New Zealand. Allegorical female representations of the four continents stand below the map and above the spheres in a mass of clouds is a view of the earth as seen from space. In gilded moulded frame. 180 x 300mm. \$1000 - \$1500

345

Cast painted concrete garden model of Popeye the Sailor. H 800 mm
\$500 - \$700

346

Early 20th century figure of Jesus standing on a cloud, the painted figure with jointed arms holding a staff with a star insignia. H.800 mm
see col ill pg 12
\$500 - \$800



346

347

Palestinian olivewood and ebony cross inlaid with mother of pearl and a bone relic, similar to a crucifix at Traquair House, Scotland reputedly 16thC and owned once by Mary Queen of Scots. The cross with inlaid and carved INRI banner is peg mounted on a trapezoidal plinth inlaid with IHS sunburst motif. H.450mm
see col ill pg 13
\$150 - \$250



347

348

Coffee table made in the form of a painted wooden lighthouse with a circular plate glass top. H.560 mm.
\$400 - \$600

349

Two painted lidded boxes, a lighthouse and an old sailor inscribed "an old salt".
\$30 - \$50

350

Cut steel business sign of JP (Pat) Newman

351

Victorian oak gothic revival lectern.
\$500 - \$800

352

19th century oak gothic revival tabernacle, the door with hammer

finished brass crucifixion scene, and with large oak central spire framed by 4 smaller spires. H.1000mm
W.370mm
\$1000 - \$1500

353

Pair of original 1930's Cape Cod outdoor chairs with distressed white paint finish.
\$400 - \$600

354

Italian 1970s chromed metal reflector table lamp, with a hemispherical reflector held vertically slicing a cylindrical base
\$800 - \$1000

355

Pair of Marcel Breuer Model B3 'Wassily' chairs. Designed 1925-6. This pair made under license for Knoll. Purchased at Liberty and Co., London in 1976 when the owner was resident in England doing urban design post-graduate studies and brought to New Zealand on his appointment to a lectureship at the Auckland University School of Architecture. See col ill pg 33
\$2400 - \$3200



355

356

Work /meeting table. Guy Richards [New Improved] design, Glenn Hogg maker for the Liz Mitchell Design fit-out in the T&G Building, Auckland (winner NZ Retail Design Awards 1994). Light timber laminate veneer top with fitted lockable drawer to one side of the deep top, flanked by open shelves, raised on paint finished 19th century homage legs.
\$300 - \$600

357

Pair of 'Senate Chairs' designed by Roy Lippincott (American born architect of the University of Auckland's Arts Building [the Clock Tower]) Part of the furniture and fittings dispersed during renovations in the 1980s

Ref: *The Architect of the Tower* Auckland Museum, 2004, Jane Wild and Louis Le Vaillant co-curators
Ref: *Objects of Desire* Art+Object catalogue, 2009. Lot 47 a Senate chair and Desk sold. See col ill pg 33
\$1800 - \$2400

357



358

Roy Lippincott Arts & Crafts rocking chair
\$2000 - \$3000
See col ill pg 33



358

359

Roy Lippincott Arts & Crafts desk chair with swivel and tilting action
\$2000 - \$3000
See col ill pg 33



359

360

Folke Ohlsson and Alf Svensson for Dux (Sweden)
three seater sofa with curved back rail and slat back, cushioned seat with webbing support. Circa 1950s.
Affixed Dux label
\$3000-3500

361

1950s G-Plan sideboard with upper section concertina cocktail cupboard, with black paneled cabinet doors
\$600 - \$1200

362

1950s oak dining table together with a set of six French dining chairs with tapering legs
\$800 - \$1200

363

Herman Miller, Charles Eames designed side table
\$400 - \$500

364

A 1960's Casala injection moulded plastic circular table and 4 cantilevered dining chairs.
\$400 - \$600

365

A 1950's Scandinavian rocking chair with tan leather seat and padded back. In the style of Bruno Mathsson. \$750 - \$1000

366

A pair of art deco lounge chairs with hoop form arms. Upholstered in tan coloured velvet. \$400 - \$600

367

1950's Danske teak veneered wall unit and side chair. \$350 - \$500

368

A 1950's teak low line chest with 2 large central drawers flanked by 4 smaller drawers. \$200 - \$300

369

A large 1970's purple shag pile rug. \$300 - \$500

370

1950's brass framed cocktail trolley. \$50 - \$80

371

A large Vitra museum collection laminated poster. \$80 - \$140

372

Eight Fritz Hansen style ant chairs with black laminate seats raised on chromium plated legs. \$400 - \$600
See col ill pg 33

372



373

A Hille international design folding orange laminate chair. \$200 - \$300

374

Chrome plated revolving clothes rack \$50 - \$100

375

A 1950's revolving office chair with red vinyl seat and back. \$150 - \$250

376

Two clear glass Whitefriars bubble vases. \$80 - \$120

376A

Set of four Hans Wegner style mahogany dining chairs \$800 - \$1000

377

A Jenar glass teapot, a glass coffee pot and matching jug. \$50 - \$100

378

A 1960's American chromium plated table lamp with three dome shades. \$200 - \$300

379

An American lamp similar to the previous lot. \$200 - \$300

380

An Italian Veneta Lumi angle poise desk lamp. \$200 - \$300

381

Italian orange powder coated steel and chrome angle poise desk lamp. \$200 - \$300

382

Brushed chrome 1960's optic lamp. \$200 - \$300

383

A 1950's Murano glass table lamp with black pleat shade. \$200 - \$300

384

A Geni plastic carafe, a Swiss Bodem lidded container together with an injection moulded plastic Italia ice bucket and a Gazzini lidded dish. \$50 - \$80

385

Large John Crichton mosaic charger, concentric circles of tiles with red as the outer ring. D.560mm \$1900 - \$2100

386

John Crichton charger with numerous mosaic tiles in predominant shades of ecru, black, green and white. Original label attached to the copper base. \$400 - \$800

387

John Crichton bowl set with mosaic tiles \$200 - \$300

388

Poole Aegean dish, pattern 57. Dia.260mm \$95 - \$125

389

A large Poole pottery vase of cylindrical shape raised on a spreading foot, hand painted with grape and leaf design. H. 280 mm \$400 - \$600.

389



390

Whitefriars 1950's red glass cylindrical vase. H.230mm \$150 - \$250

391

Whitefriars red glass bowl. D 170mm \$100 - \$200

392

Pair of German studio pottery floor vases with incised spiral pattern decoration. H.420mm \$200 - \$300

393

Pan American travel poster "Fly to South Sea Isles" 910 x 600mm \$500 - \$800
See col ill pg 40

393



394

Vintage Hundterwasser conservation week poster with coloured foils, dated August 1974. 830 x 570mm \$400 - \$600
See col ill pg 40

394



394A


Three America's Cup yacht prints, all gilt framed: *Black Magic*, *Stars and Stripes* signed by Denis Conner, *Il Moro* signed by Paul Cayard. \$400 - \$500

394B

Three framed groupings of America's Cup challenge lapel badges and insignia \$50 - \$100

395

An Italian Murano splatter glass vase modelled in the form of a purse. \$50 - \$100

- 396
Velauris 1950's pottery vase.
\$30 - \$50
- 397
A brown art deco bakelite lamp.
\$20 - \$40
- 398
Art Deco barometer
\$200 - \$300
- 399
1015/25
1980s ceramic lamp the milk glass shade set into a pyramid shaped stand. H. 460 mm
\$40 - \$80
- 400
Pair of 1970s ceiling lamps
\$200 - \$300
- 401
Pair of 1960s wall lights
\$100 - \$200
- 402
1960s table lighter/alarm clock
- 403
Scandinavian kitchen spice box, with glass canisters and pull out containers with handles set two tiers in a painted wooden frame
\$350 - \$450
- 404
A Georgian provincial oak chest on chest, the upper section with inverted cornice, 5 small drawers above 3 full width drawers, the lower section with 2 small drawers above 2 full length drawers and raised on bracket feet. H.1810 mm W.980 mm
\$2000 - \$3000
- 405
A Georgian oak welsh dresser. The upper section with inverted cornice above three shelves, the lower section with two panelled cupboards and two drawers raised on bracket feet. W.1400mm
\$2500 - \$4000
- 406
An early 19th century oak coffer with cast iron carrying handles. W.820mm
\$400 - \$600
- 406A
Georgian style Edwardian mahogany corner cupboard with astragal glazed door
\$600 - \$800
- 406B
Two 19th century demi-lune tables raised on tapering legs
\$800 - \$1200
- 407
An unusual xylophone with graduated teak boards on a folding metal base.
\$100 - \$200
- 408
Alabaster plinth
\$200 - \$300
- 409
A Small Korean elm wood blanket chest with brass fittings
\$100 - \$150
- 410
Pair of Chinese cabinets each with two drawers above two doors, with decorative painted finish
\$400 - \$600
- 411
Chinese red lacquer two door cupboard, the interior with a shelf fitted with two drawers
\$400 - \$600
- 412
Cantonese porcelain enamel decorated vase
\$30 - \$50
- 413
Chinese blue and white ginger jar. Lid faulted
\$30 - \$50
- 414
Chinese carved rootstock figure of a sage. Faulted
\$30 - \$40
- 415
19th century Chinese cloisonné dish with birds nesting in a flowering tree, with brass mounts and griffin form handles cast in high relief. D. 400mm
\$300 - \$400
- 416
Chinese porcelain baluster vase as a lamp base, painted to one side with sages in enamels and to the other with gods with mythical beasts in blue and gilt. H.500mm including wooden stand. AF.
\$100 - \$200
- 417
Chinoiserie slender baluster lamp base, decorated with raised gilt lacquer on a green ground. H.550mm
\$100 - \$200
- 418
1930's wooden candlestick painted with geometric designs and auspicious left facing swastikas
\$40 - \$80
- 419
French bronze table lamp with spherical shade supported on three deiform winged caryatid figures issuing from a triform base.
\$300 - \$400
- 420
Small cut crystal chandelier
\$100 - \$200
- 421
Art Deco figured table lamp with a glass 'flame' shade
\$100 - \$200
See col ill pg 13
- 421

- 422
Bursem H J Wood art deco jug painted in blue, black green and yellow. H.330mm
\$60 -100
- 423
Cast aluminium table lamp modelled as a galleon under sail
\$50 - \$100
- 424
Art Deco ceiling light fitting, ovoid globular hand-painted shade and metal fitting.
\$50 - \$100
- 425
Art deco leadlight hanging lightshade
\$100 - \$200
- 426
Keith Murray for Wedgwood vase, shape 4130, Moonstone glazed, circa 1945. H.255mm
\$450 - \$500
- 427
A Keith Murray matt yellow mug with banded decoration to the cylindrical body.
\$100 - \$200
- 428
A Keith Murray moonstone pedestal bowl. D. 210 mm
\$300 - \$400
- 429
A Keith Murray moonstone vase with

vertical ribbed decoration. H. 190 mm
\$200 - \$300

430

A Holmgaard clear glass vase by Michael Bang. H. 130 mm
\$40 - \$80

431

Crown Lynn Hand Potted vase, shape 18, tapering oval with incised bands at rim. Hairline crack. H.240mm
\$200 - \$300

432

Mirek Smisek for Crown Lynn *Bohemia* ware vase decorated with asymmetric sgraffito cellular design. H.130mm, See col ill pg 16
\$500 - \$600



432

433

Daniel Steenstra for Crown Lynn, spherical vase with brown banded background 'on-wheel' applied colour and charcoal overpainting. 'Hand Crafted' mark. H.170mm
\$400 - \$500

434

Daniel Steenstra for Crown Lynn, ovoid vase with experimental surface (semi-shagreen), celadon glazed. H.140mm
\$100 - \$200

435

Crown Lynn Special's Department hand potted vase with experimental 'hare's foot' glaze. unmarked, H.270mm
\$300 - \$400

436

Frank Carpay (Ambacht Volendam Pottery, Holland), circa 1951-52. Three pieces of pottery decorated sgraffito with leaf designs, a shallow flower float bowl, with frog; a lidded ramekin and a lidded jam pot
\$300 - \$350

437

A Crown Lynn hand crafted vase by Daniel Steenstra painted with flowers on an olive ground. H.230mm
\$225 - \$300

438

Rare Crown Lynn shape 85 vase ovoid with moulded flowers at the neck. Golden yellow glaze.
\$195 - 225
See col ill pg 16



440

438

439

439

Crown Lynn shape 84 turquoise trickle glaze shoulder vase, See col ill pg 33
\$50 - \$90

440

Shape 56 Crown Lynn trickle glazed shoulder vase, See col ill pg 33
\$50 - 100

441

Crown Lynn wall vase, mottled ochre glazed, shape 8
\$75 - \$100

442

Royal Doulton Pansy pattern octagonal teapot . H.123mm
\$500 - \$600

443

Royal Doulton Pansy pattern octagonal milk jug . H.127mm
\$250 - \$350



443

442

444

Royal Doulton Pansy pattern octagonal bowl. W.220mm, Deep 50mm
\$200 - \$300

445

Royal Doulton Pansy pattern oval bowl. W.272mm, Deep 50mm
\$150 - \$250

446

Two Royal Doulton Pansy pattern plates. D.216mm
\$150 - \$250

447

Royal Doulton Pansy pattern plate, D.245mm, small rim frit; plate, D.186mm and bowl, D.192mm
\$200 - \$300

448

Pair of Art Nouveau mottled iridescent glass vases
\$90 - \$150

449

Art Nouveau Loetz-style iridescent glass vase. Cylindrical with flaring mouth
\$240 - \$300

450

Viennese Secessionist style porcelain vase. With handles formed as the stems of a flowering plant. H.210mm
\$50 - \$100

451

A pair of Loetz style green iridescent glass vases with pierced copper decorative overlay.
\$50 - \$100

452

Iridescent green Art Nouveau vase
\$40 - \$60

453

Pair of Rene Lalique tinted amber glass tumblers with overlapping leaf decoration. H.130 mm
\$400 - \$600

454

German crystal decanter acid etched decoration depicting a rhinoceros in a glade, with six matching glasses.
\$150 - \$250

455

Etling, France, frosted glass vase, ovoid shaped moulded with dahlias. Impressed marks. H.123mm
\$100 - \$200

456

Pair of Doulton Lambeth stoneware Art Nouveau vases decorated with spade and ball-tree motifs on a powder blue ground. Incised artist's monogram to one. H.170
See col ill pg 16
\$500 - \$600



456

457

English Pewter, Archibald Knox design, flagon with whiplash designs and raised spade shaped enamel bosses. Shape 0231 impressed along with manufacturers marks. H.221mm
\$300 - \$500

458

Art Deco female plaster figure of a boxer entitled "The Sporting Girl". H.350 mm
\$300 - \$400

459

Austrian Karlsbad Art Nouveau white porcelain tureen with sinuous handles. L.300 mm
\$400 - \$500

460

An Austrian *Aichwald* Art Nouveau ewer vase decorated with a maiden wearing a headscarf, the handle modelled in the form of a dragon in high relief. H.360mm
\$400 - \$600

461

Czechoslovakian *Amphora* vase with twin handles and with floral decoration. H.260mm
\$80 - \$120

462

Pair of Art Nouveau glass vases, each with floral decoration.
\$180 - \$260

463

Art Nouveau *Amphora* centrepiece vase modelled with a young maiden seated on a outcrop W.500mm
\$500 - \$800

464

Czechoslovakian *Amphora* ovoid vase modelled with a fox in high relief stalking a group of hens raised on scroll legs. H.250mm
\$400 - \$600

465

Goebal's biscuit porcelain figure of a girl sprinter, see col ill pg 16
\$300 - \$400



466

W Goebal pottery camel, 1956 trademark stamp
\$100 - \$150

467

Large pottery slip-cast hippo and 2 small hippos with mottled mauve glaze.
\$150 - \$250

468

Royal Winton lustre baluster vase. Fairy Cobweb pattern, #9596. H.180mm, see col ill pg 16
\$200 - \$300



468

470

469

469

Royal Winton lustre ovoid vase. Fairy Cobweb pattern. H.210mm
see col ill pg 16
\$200 - \$300

470

Royal Winton lustre squat circular cauldron vase. Fairy Cobweb pattern. Dia.175mm Unmarked but with gilt pattern # 9596, see col ill pg 16
\$150 - \$250

471

Royal Winton Fairy Cobweb lustre dish, square shape with serpentine rim, acanthus moulded handles. W.223mm
\$150 - \$250

472

Royal Winton Fairy Cobweb small octagonal plate. D.135mm
\$40 - \$80

473

Royal Stafford *Titania Ware* lustre cylindrical vase with trumpet mouth. H.180mm
\$200 - \$300



480

473

481

474

Royal Stafford *Titania Ware* lidded shouldered jar. H.142mm
\$175 - \$250

475 Sandland *Zebrette* ware jug, two small plates and salt and pepper shakers
\$125 - \$200

476

Six Lancaster & Sandland *Zebrette* ware beakers and a matching jug in zebra 'stripe' with yellow interiors. see col ill pg 16
\$200 - \$300



476

477

Hornsea *Elegance* (designer John Clappison, 1955) sugar and milk jug, black and white striped with yellow interior and a similarly coloured Eastgate (Hornsea mould) leaf shaped dish.
\$125 - \$200

478

Newport Pottery Clarice Cliff lotus vase, white exterior, green interior
\$50 - \$100

479

Clarice Cliff Cubist Art Deco vase see col ill pg 16
\$400 - \$600

480

Wilkinson Ltd., Clarice Cliff mug with a hand painted green clothed pixie handle. H.76mm
\$125 - \$175

481

Wilkinson Ltd., Clarice Cliff conical shaped teapot with hand painted gnome handle
\$500 - \$700



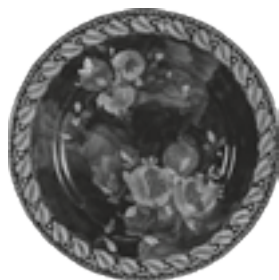
482

482

Villeroy & Boch six place teaset, teapot, milk and sugar along with luncheon plates and a cake plate. All gloss black glazed with contrasting yellow detail.
\$200 - \$300

483
Clarice Cliff Rudyard honey pot
\$200 - \$300

484
Art Deco jewellery box and tray



485

485
Maling lustre plate decorated with pomegranates.. D.285mm
see col ill pg 16
\$100 - \$150

486
Three Carltonware toucan birds advertising Guinness stout
\$500 - \$800

487
Two 1930s sewing reel holders mounted with composite dolls heads
\$100 - \$150

488
Maling plated decorated with tulips on a scumbled blue ground. Pattern 6064. c.1930. D.285mm
\$150 - \$200

489
French Art Deco wrought iron hall stand with upper section mirror. The lower section divided to accommodate walking sticks.
\$600 - \$800

490
Art Nouveau embossed copper firescreen with stylised peony roses with whiplash stems in high relief
\$200 - \$300

491
Art Nouveau coal box with a copper lid embossed with stylised tulips and with decoratively embossed hinges
\$300 - \$400

492
Arts and Crafts copper coal box, of tapering square shape standing within a wrought iron strap frame
\$200 - \$300
see col ill pg 33

492



493
WMF brass and copper spirit kettle
\$135 - \$175

494
WMF brass and copper spirit kettle
\$135 - \$175

495
WMF centerpiece modelled as a figure on a gondola, with green glass liner.
\$800 - \$1000

496
Florence terracotta plaque – 'Hitler's War Fund' 1945
\$350 - \$450

497
Gouda *Appel* twin handled vase, hand painted with fruit decoration. H.260 mm
\$250 - \$350

498
Belgium Arts and Crafts studio pottery vase, twin handled with incised interweaving ribbon decoration. H.280mm, see col ill pg 16
\$300 - \$500

498



499
Beswick model of a cairn terrier

500
Beswick model of a bulldog
see col ill pg 16

500



501
Beswick model of a wired haired terrier

502
Beswick model of a boxer

503
Beswick model of a rainbow trout

504
Beswick model of a rainbow trout

505
Beswick model of an elephant

506
Two Beswick models of ponies

507
Beswick model of a rabbit and a pheasant

507A
Moorcroft vase decorated with anemones. Impressed and painted marks: initials, facsimile signature and Potter to HM The Queen. 1928-53. H.155mm
\$400 - \$500

508
A Moorcroft hibiscus pattern ovoid vase. H. 200
\$400 - \$600

509
A Walter Moorcroft hibiscus pattern plate. D. 260 mm
\$300 - \$400

510
Gane and Benge bowl, sugar pot and Stephen Robertson plate
\$70 - \$90

511
Paul Fisher shino glaze spaghetti jar and casserole
\$100 - \$150

512
Unknown potter, crackle glaze vase and pottery bowl
\$50 - \$70

513
Elizabeth Mathieson PAKA pottery blue glazed vase
\$30 - \$50

514
Paul Melser crock, unmarked jug and a vase marked 'PAT'
\$40 - \$60

515
Briar Gardiner small bowl
\$30 - \$40

516
Olive Jones blue glazed bowl
\$80 - \$100

517
Len Castle earthenware wall vase with wire cut surfaces and copper coloured glazes, reglued chip to mouth.
\$300 - \$350

518
Jack Laird small box, a petal shaped dish and an O C Stephens bowl
\$75 - \$100

519
Two Peter Stichbury beer steins
\$60 - \$80

520
Harry and May Davis, Crewenna
Pottery, table lamp base
\$70 - \$100

521
Harry and May Davis, Crewenna
Pottery, unmarked, lidded jar
\$100 - \$150

522
Three pottery vases by Richard
MacLaurin Whangaparaoa
\$90 - \$110

523
Brian Flintoff *Ika Whenua* Whale
Bone Carved Pendant and
Lignum Vitae Carved Whale Stand
1987. The pendant carved with
two whales, eyes of serrated paua
and black coral inlay. The toggle
from small pilot whale tooth with
black coral eyes. The lignum vitae
stand again in the form of a whale
forming a pool to hold the pendant.
Accompanying miniature kete woven
by Heeni Kerakara.
\$500 - \$600

524
Gary Nash amethyst frosted glass
pedestal bowl, signed and dated
1987. D. 370 mm
\$400 - \$500

525
Juliet Peter salt glazed pottery money
box as a bull, unmarked
see col ill pg 33
\$350 - \$400



526
Temuka Pottery salt pig
\$20 - \$40

527
P Hutson and Co., three gallon
beer barrel, H.360mm, Dia.270mm.
Old repair to the top rim, and minor
knocks. see col ill pg 13
\$500 - \$600



528
Small rare Milton pottery pie dish
140 x 100mm
\$150- \$200

529
Luke Adams pottery ochre glazed
teapot
\$150 - \$200

530
Luke Adams pottery miniature crock
(faulted) and jug
\$30 - \$50

531
19th century japanned tin spice box.
Circular hinged lidded with two layers
of five fitted canisters with contents
labeling painted on lids.
\$150 - \$250

532
Pair of Delft pottery tiles
\$200 - \$250

533
Three Delft tiles
\$400 - \$450

534
Four Delft blue and white tiles
\$200 - \$250

535
Six Delft tiles (faulted)
\$300 - \$350

536
Three Delft tiles
\$250 - \$300

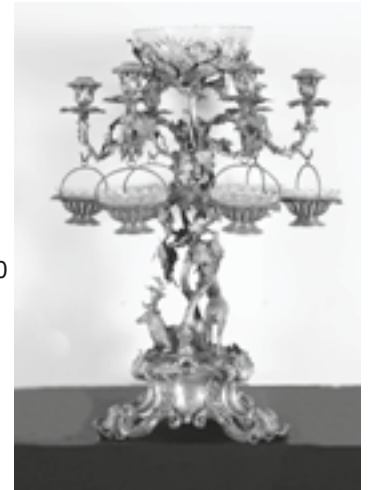
537
Two Delft tiles and one other
\$100 - \$150

538
Five Delft Tiles, (faulted)
\$150 - \$200

539
Mason's Ironstone China *Strathmore*
pattern dinner service.
6 dinner plates
6 luncheon plates
6 side plates
5 dessert bowls
6 soup coupes and saucers
5 tea cups and 7 saucers
\$400 - \$500

540
Victorian silver plated candelabra
epergne centerpiece, modelled as a
naturalistic fruiting vine supporting
six candle nozzles and six hanging
dishes with crystal inserts (original),
surrounding a central crystal bowl
(replaced). The plinth base is formed
from three large acanthus scrolls,
contd...

two stags rest beneath the vines.
H.735mm
\$1200 - \$1400



540

541
Sterling silver pique-work inlaid
tortoise shell backed dressing table.
A hand mirror, two hairbrushes and
two clothes brushes. Birmingham,
1919.
\$500 - \$800

541A
Large heavy silver plated tray with
foliate form handles raised on four
scroll legs. W.760mm
\$100 - \$200

542
Pair Sterling silver Georgian style
fluted sauce boats, Birmingham 1930
\$350 - \$450



542

543
Pair of sterling silver Georgian style
sauce boats with acanthus capped
double scroll handles, Sheffield
hallmarks
\$300 - \$400



543

544
Early Victorian melon shaped sterling
silver teapot, London 1848 by Hunt
and Roskill (late Storr, Mortimer &
Hunt) [Paul Storr] and so marked to
the base
\$450 - \$550

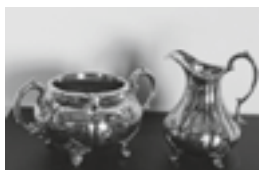


544

545

Victorian sterling silver sugar bowl and cream jug, London 1858 by Harrison Bros & Howson. Squat circular and baluster shapes raised on acanthus feet.

\$450 - \$550



545

546

Pair of Edwardian sterling silver mustard pots with hinged covers and blue glass liners (one absent) together with mustard spoons, Birmingham 1905

\$150 - \$200

547

Pair of late Victorian sterling silver candlesticks in Adams style, the nozzles modelled as classical urns raised on tapering square section columns moulded with ram's heads and swags, issuing from square bases with urn motif decoration. London 1891 by Martin Hall & Co.

\$1000 - \$1400, see col ill pg 40



547

548

Sterling silver fiddle pattern cutlery canteen, Sheffield 1925, comprising: 12 soup spoons, 12 table forks. 12 dessert spoons, 11 dessert forks along with 12 table knives with stainless blades and silver plated handles and 10 matching entrée knives.

\$2800 - \$3400

549

Pair of early Victorian sterling silver fiddle pattern soup spoons, London 1838 by Mary Chawner

\$150 - \$200

550

Set of six Victorian sterling silver fiddle pattern teaspoons, London 1868 by Henry Lias Jnr & Son

\$60 - \$100

551

Four Georgian Old English pattern Sterling silver teaspoons, London 1807 by Godbehere, Wigan and Bult.

\$40 - \$70

552

Pair Queens pattern Victorian EP soup spoons

\$10 - \$15

553

Cased set of five Edwardian sterling silver jam spoons with cast handles and draped figured terminals, London 1910. (one missing)

\$150 - \$200

554

Victorian sterling silver shell shaped butter dish, Sheffield 1894 by Walker & Hall

\$100 - \$150

555

Sterling silver shell shaped butter dish, Sheffield 1920

\$100 - \$150

556

Cased set of six sterling silver coffee spoons with coffee bean finals, Birmingham 1924

\$100 - \$150

557

12 place setting of sterling silver Queens pattern fish knives and forks and pair of matching fish servers. Sheffield 1913

\$1000 - \$1250



557

558

A small sterling silver sauce ladle with pouring lip, Sheffield 1921

\$100 - \$140

559

Three Georgian sterling silver bright cut teaspoons

\$50 - \$80

560

Edwardian sterling silver butter knife, Sheffield 1901

\$40 - \$50

561

Victorian sterling silver teaspoon and coffee spoon

\$15 - \$20

562

Two sterling silver napkin rings

\$50 - \$75

563

Victorian EP four piece tea and coffee set, a mustard pot, pepper shaker and EP cutlery

\$160 - \$200

564

Pair of Victorian EP engraved circular salvers

\$200 - \$300

565

John Osborne. 2 Booklets of Men's fashion Illustration preparatory sketches - approx 50 in total. Goache on black card

\$200 - \$300

566

John Osborne. 49 Photographs of Winstone Products window displays from the period 1959-1968 - Barry McKay Industrial photography & Sparrow Photographers

\$75 - \$150

567

John Osborne. Approx 25 small illustrations & sample design for products inc. Summit, Knorr Swiss and Baker Brushes. Various media

\$50 - \$75

568

John Osborne. 5 New Digest illustrations - late 1940s with copies of magazine. Goache on paper

\$75 - \$125

569

John Osborne. 6 Advertising Poster Illustrations inc. The De Luxe Grill Room, Auckland & Tour Auckland Province. Goache on paper

\$125 - \$175

570

John Osborne. 6 various drawings & illustrations in various media depicting, masks, portraits, a puppet dragon etc

\$75 - \$125

571

John Osborne. 17 Pen & Ink and wash drawings and studies inc. Bowls, Cecil & Co Fish Shop etc. This lot clearly displays the variety of graphic styles in vogue after WWII

\$75 - \$125

572

John Osborne. 14 Pen & wash, Ink & Gouache illustrations inc. Indian Toys, Cat & Dog Show, Magician, Triton Screens etc. This lot clearly shows the artist's facility with a wide range of media

\$150 - \$250

573

John Osborne. 2 Fashion & Advertising illustrations. Goache on paper

\$100 - \$200

574

John Osborne. Commercial Window Display Sculptures (2) in the form of a Red Indian Chief & Squaw. Painted wood & Card. Approx 730 x 490 x 90mm, see col ill pg 40

\$200 - \$300

575

John Osborne. 4 Booklets of Advertising Designs inc. Baggage, Shoes, etc. Goache on paper, 1946
\$100 - \$200

576

John Osborne. 4 Small Booklets of Advertising Designs inc. Rhythmic Designs, Shoes, Furs etc
Goache on paper, 1946
\$100 - \$200

577

John Osborne
2 Large Booklets of Advertising Designs inc. Baggage & Homeware
Goache on paper, 1946
\$75 - \$125

578

John Osborne. 20 Life Drawings (approx) Graphite on paper 1944-48
\$100 - \$200

579

John Osborne. 15 Clothed Figure Studies (approx) Graphite on paper, 1945-46
\$100 - \$200

580

John Osborne. 20 Life Drawings
Graphite on paper, 1944-1947
\$100 - \$200

581

John Osborne. 24 Life Drawings (approx) Graphite on paper, 1944-48
\$100 - \$200

582

John Osborne. 25 Life Drawings (approx.) Graphite on paper, 1944-48
\$100 - \$200

582A

John Osborne. 22 Portrait Studies
Graphite on paper, Undated circa mid 1940s
\$100 - \$200

583

John Osborne. 50 Graphite Sketches, Watercolours and Lithographs (approx.) Auckland scenes inc.

contd...

Grafton Bridge, street scenes, Rangitoto, docks, scenic landscapes, tree sketches & sample lettering etc
Early to mid 1940s
\$150 - \$250

584

John Osborne. Booklet of 16 Advertising designs for Ice Cream
Goache on paper, 1946
\$150 - \$200

585

Michael Jackson signed guitar
From the last ever 96/97 History World Tour visit to New Zealand at Ericsson Stadium, Saturday 9 November 96

A number of local performers were in line as potential support acts including Wellington band FBI. Although the band was not picked to support the tour they attended the concert and obtained the signatures on this bass guitar of Jackson, and on the reverse the signatures of his backing band. These signatures of Jennifer Batten, (guitarist on the Bad, Dangerous and History tours), David Williams (guitarist on the Dangerous and History tours) and Freddie Washington [Ready Freddie] (bass guitarist on the History tour) are particularly unusual since contractual agreements at the time should have precluded this. Additionally over the intervening years Trina Peach of FBI gained the signatures of Alanis Morissette, Sting, Neil and Tim Finn, and Gray Bartlett.
\$3000 - \$5000
see colour illustration page 37



586

An automaton – *The City of Rome*, unknown maker, c.1890

From the Jobling toured *London Mechanical and Electrical Exhibition* as above.

Ref: en.wikipedia.org/wiki/SS_City_of_Rome

Built for the Inman Line to be the fastest and largest trans-Atlantic liner the SS City of Rome was the first liner lit entirely by electricity, thus a most suitable subject for the 'Electrical' Exhibition. She was scrapped in 1902.

The steam and sail ship rocks as upon the waves and a background cloth painted with coastal scenes passes on a pulley driven continuous roll to simulate the ship moving before it. A hot air balloon moves across the sky above the vessel. The power drive mechanism is absent, rigging and sails faulted and the backdrop rope replaced.

\$5000 - \$10 000

587

An automaton – *Pierrot Serenading the Moon* by Gustave Pierre Vichy or Leopold Lambert, Paris c.1890.

With some alterations to run by electric motor outside the case, most likely made when it was assembled for touring exhibition and with extension and modification to the case beneath the figures
\$20000- \$30 000
see col ill pg 37



588

An automaton – *The Lord's Supper*, the manufacture attributed to Henry (Edouard Henri) Phalibois, c.1890.

The best surviving piece of automata from a collection bought to New Zealand as a travelling exhibition that toured Europe, Australia and New Zealand under the name of *The London Mechanical and Electrical Exhibition* in the 1920s. The exhibition pieces had been collected from England and France in the early 1900s by David Jobling Vaughton and his grandson, a Mr Jobling was instrumental in their presentation here.

Occasional pieces from this exhibition have sold overseas in the last 30 years. *Magician and Musicians* sold in the 1970s and *New Women* sold in 2006 both in the United States.

The Lord's Supper is virtually complete excepting parts of the exterior casing and a diminishment in height of the case and therefore the interior background and ceiling painting. The 13 figures of Jesus and the disciples are driven by two cams each with Jesus having an additional two. Two small electric motors drive the mechanism. see col ill pg 37

\$80 000 - \$100 000



586 detail

589

An automaton – *Singing Bower Birds* by Bontems, France, c1890.

From the Jobling toured *London Mechanical and Electrical Exhibition* as above.

Arranged on an ebonised base with six birds in a leafy tree under glass dome (faulted). The bird sounding mechanism removed but included unattached. The spring drive mechanism replaced with a gramophone drive actuates all six birds via rods and cams to sing, drink from a mirror 'pond', flap wings and flit between branches, along with a glass pouring 'waterfall' (needing adjustment)

\$3000 - \$4000

590

Gothic church organ

Church 2 stop barrel organ by John Fentum 78 The Strand and No.2 St Georges Place, London. Fentum's father had been an organ builder from the mid 18th century, John took over the business about 1784 and continued it to circa 1835. Requires restoration

32 zinc and wooden pipes some, with two barrels with ten tunes each, stamped with maker's details. One in original case. Purchased in England by Jackson's Museum, subsequently sold at George Walker's auctions 1972, see col ill pg 37

\$3000 - \$4000



590

591

Gothic church organ

Church 2 stop barrel organ attributed to John Fentum as above, requiring restoration

zinc and wooden pipes some which are incorrectly seated in the stack, with two barrels, both unpinned though one marked out for pinning with large collection of associated pins

Purchased in England by Jackson's Museum, subsequently sold at George Walker's auctions 1972

\$2000 - \$2500

592

Reed organ by Clough & Warren, Detroit, USA, circa 1890. 15 stops with 10 painted false pipes featuring on it's front. Playing in part, needing restoration

\$800 - \$1500

593

Reed player organ by Malcolm & Co. 10 stops and a re-roll valve stop. Plays 64 note organ rolls and comes complete with 15 of these. Lever covering tracker bar to enable operation as a normal organ extant but needs reattachment. A speed indicator dial positioned on the right hand side of the fall board

Requires restoration

\$500 - \$1000

594

The Improved Mandolina, No 5498 Organette by Merrit Gally, USA. circa 1886(A very similar model to the Celestina by the Mechanical Organette Co, N.Y.) Complete with seven, 20 note, 5 1/2" long rolls and playing. Minus a knob on the on/off rod

\$300 - \$500

595

Rolamonica – a Bakelite mouth organ playing on paper rolls auctioned by turning a handle, complete with four rolls and playable. Circa 1930, Baltimore USA.

\$100 - \$150

596

Orchestral Organette by J Draper, British Organette Works, Blackburn, Lancashire, England, circa 1887

and Rolls. Three stops, playing 14 notes on 7 1/4" paper strips. Base board missing and a number of strips damaged. Additional gilding latter added and names on stops replaced

\$300 - \$500

597

Regina Disc Music Box, #48883. Playing 15 1/2" (395mm) discs, oak cased with key, original patent and instructions details inside. Single comb, slow/stop lever broken to top, needs damper restoration, motor changed from spring to (possibly) gramophone. With one disc with tune and maker details either side.

\$1800 - \$3000

598

Polyphon Music Box - recased, twin comb, the top one inexpertly repaired. With new base stand to hold the 56 accompanying mixture of *Regina* and *Polyphon* 15 1/2" discs

contd...

(in apparent good condition). Box plays but requires restoration
\$3000 - \$4000

599

Cuendet 12 aire music box with six German silver bells and drum (28575?), 64 teeth with one broken tip. 330mm cylinder, Plays but out of alignment and needing restoration. Re-cased but lid might be original

\$1200 - \$1500

600

Drum and Bell Music Box #5593, playing 12 aires on a 330mm comb, one tooth broken, one tip missing, Six German silver bells struck by butterfly hammers with porcelain wings. Cylinder with pin damage (first tune will not play, possibly requires re-pinning). The case made from various other case pieces, the lid inlaid with a woman and cherub

\$1000 - \$1500

601

Maker Unknown - Organ Music Box, playing eight tunes on a 350mm cylinder with an organ section between the two combs, 77 teeth, 20 organ stops, one not functioning. Re-cased, some dampers broken, needs general restoration, deck above the organ mechanism missing, playing but requires restoration

\$500 - \$1200

602

Box of 16 *Polyphon* and *Regina* 15 1/2" discs

\$200 - \$300

603

Edison *Amberola* 30 cylinder phonograph in very good condition complete with grill. Complete with some cylinders

\$500 - \$800

604

Edison *Amberola* 30 cylinder phonograph in very good condition complete with grill. Affixed with shop's plaque for Wade & Co, Auckland. Complete with some cylinders

\$500 - \$800

605

Edison diamond disc B19 *Chalet* or *Bungalow* model, circa 1919 until 1923, complete with Kent 78rpm playing attachment in original box and with diamond disc 'Dance' Reproducer, red gum cased, complete with selection of Diamond Disc records and 78s

\$900 - \$1200

606

Edison *Triumph* Phonograph. Model E with Model O reproducer (in good condition) allowing playing of 2 and 4 minute records. A swollen bearing on the cylinder shaft has jammed it and requires replacement. (would play if bearing replaced). Complete with original wooden *Music Master* horn (phonograph horn not a *Cygnets* type) with some repairs, and with crane to suspend horn. Complete with some cylinders
\$1500 - \$2000

607

HMV *Lumiere* gramophone. Going order, diaphragm repainted, mahogany cased. Affixed retailer's label: Gilberts, Wanganui
\$500 - \$800

608

Magic Note tin gramophone by *Columbia*. 8" turntable but would play 10" record, with 3 children's 8" records. Later gilding added
\$200 - \$250

609

Spotlight Golf Co Ltd, London 1920s simulated golf game machine. An electrical device using sophisticated engineering to play a game on printed course 'maps'

610

French Napoleon III period mantel clock by Henri Picard. The gilt bronze case surmounted by a figure of Hope seated resting her arm on a large anchor beside a cornucopia spilling forth a profusion of fruit symbolic of abundance. The white enamel dial with Roman numerals flanked by recessed carrara marble plaques. Eight day, bell striking movement. Circa 1860. W.450mm. H.380mm.
\$2000 - \$3000
see col ill pg 40



610

611

Jaeger Le Coultre *Atmos* clock. The gold plated clock housed in a five panel case. Factory inscriptions to the movement and underside of the case. Registration number 425304. H.220mm. W.160mm
\$1000 - \$2000.
see col ill pg 40



611

612

Bakelite Philips radio
\$40 - \$100

613

Art Deco cathedral radio
\$150 - \$250

614

Art Deco Well Maydee Art Deco Radio
\$150 - \$250

615

Art Deco STC cathedral radio, model 447
\$200 - \$300

616

Art Deco Stewart Warner radio with magic dial
\$200 - \$300

617

Art Deco Philco radio
\$50 - \$100

618

HMV Art Deco radio
\$50 - \$100

619

Stromberg Carlsson Art Deco radio
\$150 - \$250

620

Crossley cathedral radio
\$150 - \$250

621

STC Art Deco radio
\$100 - \$200

622

PYE 1950s radio
\$20 - \$40

623

Rolls Art Deco walnut cased radio
\$150 - \$250

624

Gillfillin Crusader radio
\$100 - \$200

625

Philco Art Deco radio
\$50 - \$100

626

Art Deco walnut cased radio
\$100 - \$200

627

Riechman Thorola doughnut coil valve radio, model 59. Ex Wagener Museum Collection
\$300 - \$500

628

Early Garod cabinet radio receiver with Bakelite dials
\$250 - \$350

629

Art Deco cabinet radio
\$100 - \$200

630

Art Deco radio cabinet
\$50 - \$100

631

Regency Cottage Clock c. 1830
Maker D Black & Yas, Windsor, London

632

Sambo Clock with Money Box Head reproduction

633

Mammy Clock in plaster reproduction

634

Victorian spelter clock with cupid with replaced movement

635

Ornamental spelter clock – Woman with a Lyre

636

Brass rococo clock reproduction

637

Ornamental spelter clock – Woman with a Lyre

638

German Mystery Clock – Onion Boy

639
Made up clock featuring French movement, with cherubs on each side

640
Reproduction mystery clock with classical women
Original German movement

641
Cast aluminium figure 'Napoleon'

642
Reproduction mystery clock, original US movement with classical woman

643
Plaster model of an original French Contise clock

644
Reproduction Hood of a Grandfather Clock – Smith Chimney Clock Movement

645
Gilt metal skeleton clock with figure on top, fusee movement

646
Brass Viking ships clock on easel reproduction

647
Brass reproduction lantern clock with fusee movement
see col ill pg 40

647



648
Turned wood reproduction wall clock with original weight driven movement

649
German twin cuckoo clock 1960's

650
Grandfather clock with brass and steel dial
Stephen Wilmschursp
case part new part old

651
Reproduction hood of a grandfather clock with antique chiming clock movement

652
Reproduction plaster on stand 'The Grape Boy' with original French movement

653
Silvered metal German carriage clock

654
French slate mantle clock 'Young man with birds nest'

655
Large brass lantern wall clock with pendulum
Reproduction c. 1980's

656
Large Black Forest Cuckoo clock with eight day movement
c. 1950's

657
Plastic gilt rococo mantle clock

658
Gilt metal clock 'Hunter with Dog'
made up base, no movement

659
Cast brass reproduction rococo style mantle clock

660
Rare 400 day dome clock with turret pendulum and two dials

661
French slate clock with presentation plaque dated 1895

662
Reproduction French clock in cast plastic, ornate Victorian style

663
Victorian wooden wall clock with pendulum

664
Cuckoo clock with deer on top

665
Inudial time clock

666
17 1940s mantle clocks – some chiming

667
Black modern mantle clock

668
Stained and grained tan mantle clock with oval dial and shell decoration

669
American wood shell clock with turned Corinthian columns

670
Square American wall clock

671
Square American wall clock

672
Round Ansonia American wall clock

673
French rope clock

674
Chrome ship's clock

675
German wall clock

676
A large homemade black ???

677
Wall clock movement and pieces

678
American mantle clock (plastic)

679
American shelf clock – gingerbread

680
German bracket clock (faulty)

681
American shelf clock (faulty)

682
American Ansonia gingerbread clock

683
Victorian mantle cuckoo clock case

684
French marble clock

685
French Ansonia marble clock

686
French slate and marble mantle clock (no glass)

687
Wooden bubble electric mantle clock

688
Antique black wooden case with modern movement

689
Bakelite Vidascope clock (necked????)

690
Reproduction skeleton clock

691
American wooden shelf clock

692
Reproduction skeleton clock

693
Small eight day glass dome clock with balance wheel

| | | | | | |
|-----|---|-----|--|-----|---|
| 694 | 400 day dome clock | 713 | German clock on stand – moving chicken | 733 | Taxi meter c. 1950's |
| 695 | Home made clock with antique dial and French movement | 714 | Red money clock (with original key) | 734 | Collection of cut throat razors |
| 696 | Chrome ships clock | 715 | Early electric digital clock | 735 | Viking lighter |
| 697 | Gilbert Airmeter Art Deco bedside clock | 716 | German brass musical carriage clock | 736 | Art deco cigarette box in original boxes (2) |
| 698 | Antique gilded bedside with balance wheel on top | 717 | German silver metal alarm carriage clock | 737 | Art deco plane on stand |
| 699 | German tin carriage clock | 718 | Antique octagonal wall clock | 738 | Five assorted cigarette cases |
| 700 | White tablet clock (ticket clock) | 719 | A round Gilbert wall clock | 739 | Five assorted cigarette cases |
| 701 | German clock with swinging pendulum, cherub on top | 720 | Victorian black slate and marble clock | 740 | Six assorted cigarette cases |
| 702 | Slate and marble clock with English deco movement | 721 | Home made bracket clock with early face | 741 | Imperial Printing Co. print |
| 703 | Reproduction brass skeleton clock | 722 | Antique hexagonal drop dial clock (no glass) | 742 | A pair of Black Forest Bear finials |
| 704 | Three cut glass bedroom clocks and one orange plastic clock | 723 | 'Jumping girl' clock | 743 | Sterling teapot (lid broken) |
| 705 | Chrome Westclox | 724 | Seth Thomas ships clock with bell on bottom (no glass) | 744 | Miniature inkwell |
| 706 | Smiths bedside clock in case | 725 | American OG clock with painted scene (Washington) | 745 | Two reproduction Greedy Nigger money boxes |
| 707 | German wooden bedside clock | 726 | Seth Thomas ships clock | 746 | Victorian epergne |
| 708 | Four assorted bedside American clocks | 727 | German wall clock | 747 | American regulator wall clock with date |
| 709 | Brass ticket carriage clock (plastic and glass) | 728 | Hexagonal American wall clock (8 inch) | 748 | no lot |
| 710 | Brass ticket carriage clock (cracked glass) | 729 | Hexagonal American wall clock (8 inch) | 749 | German carriage clock (faulty) |
| 711 | Parker alarm clock on stand (no glass) | 730 | Time clock | 750 | American OG wall clock (painted scene) |
| 712 | Alarm clock on stand with pictorial face | 731 | Elevation gun sight | 751 | 400 day dome clock |
| | | 732 | Miniature printing press | 752 | American calculator clock |
| | | | | 753 | Victorian wooden mantel clock (American movement) |



359



357



254



358



372



355



492



525

754
19th Century German cuckoo clock

755
German shelf clock

756
American oak mantle clock (no glass)

757
American black wooden mantle clock

758
American shelf clock (has brass on dial)

759
American hexagonal wall clock (no glass) ansonia

760
5 boxed Matchbox Superkings large Trucks inc. K-8 Animal Transporter, K-21, K-i6, K-31 & K-3
\$100 - \$175

761
6 boxed Matchbox Superkings Trucks and Transporters inc. K-13 Aircraft Transporter, K-27, K-11, K-20, K-17 & K-79
\$100 - \$175

762
5 boxed Matchbox Superkings Trucks inc. K-39 Snorkel Fire Engine, K-15, K-13, K-2 & K-20
\$100 - \$175

763
10 boxed Matchbox 1981 series Racing Cars inc. MB7, MB68, MB46, MB12 etc
\$75 - \$125

764
10 boxed Matchbox 1981 series Trucks & Vans inc. MB60, MB26, MB40, MB 48 etc
\$75 - \$125

765
9 boxed Matchbox 1981 series Trucks & Vans inc. MB27, MB54, MB21, MB13 etc
\$75 - \$125

766
10 boxed Matchbox 1981 series Sedans & Sports inc. MB28, MB47, MB6, MB33 etc
\$75 - \$125

767
12 boxed Matchbox 1981 series Sports etc inc. MB43, MB28, MB37, MB9 etc
\$100 - \$150

768
12 boxed Matchbox 1981 series assorted inc. MB72, MB17, MB42, MB5 etc
\$100 - \$150

769
5 boxed Matchbox Superkings inc. K-80 Dodge Custom Van, K-71 Porsche Police Set, K-29, K-75 & K-66
\$100 - \$150

770
6 boxed Matchbox Speedkings inc. K-27 Camping Cruiser, K-25 Boat & Trailer, K-7, K-35, K-30 & Superking K-6
\$100 - \$150

771
8 boxed Matchbox Speedkings inc. K-21 Cougar Dragster, K-28 Drag Pack, K-38 Gus's Gulper, K-55, K-60, K-31, K-52 & K-50
\$125 - \$175

772
Matchbox Superfast Racing Specials Pack G-3 with 6 non matching Superfast cars
\$150 - \$250

773
5 boxed Matchbox Regular Wheels Sports cars inc. 41-Ford GT Racing, 32-E Type Jaguar, 8-Ford Mustang, 75-Ferrari Berlinetta & 14-Iso Grifo
\$100 - \$150

774
10 boxed Matchbox Regular Wheels Trucks inc. 1-Mercedes Truck & 2-Trailer, 4 Stake Truck, 11-Scaffolding Truck & 7, 47, 58, 60, 44, 10, & 7
\$125 - \$175

775
9 boxed Matchbox Regular Wheels Tiptrucks inc. 48-Dodge Dumper Truck, 17-8-wheel Tipper, 70, 51, 26, 28, 16, 3 & 15
\$125 - \$175

776
12 boxed Matchbox Regular Wheels Cranes & Tow Trucks inc. 6-Euclid Quarry Truck, 42-Iron Fairy Crane, 24, 11, 30, 13, 64, 43, 30, 71, 18 & 69
\$150 - \$200



779A

776

777
5 boxed Matchbox Regular Wheels Fire Appliances inc. 57-Land Rover Fire Truck, 29, 35 Snow-Trac, 9 & 63
\$50 - \$75

778
4 boxed Matchbox Regular Wheels BP themed trucks inc. 61-Alvis Stalwart, 25, 32 & 13
\$50 - \$75

779
9 boxed Matchbox Regular Wheels Trucks & Tractors inc. 3 x 49 Unimog, 2 x 39 Ford Tractor, 72, 1, 21, 49 & 26
\$125 - \$175

779A
12 boxed Matchbox Regular Wheels American Sedans & Coupes inc. 2 x 57-Chevrolet Impala, 2 x 59, 75-Thunderbird, 22-Pontiac Coupe, 31, 39, 62, 20, 31 & 55, see col ill pg 40
\$150 - \$200

780
5 boxed Matchbox Regular Wheels Wagons & Pickups inc. 71-Jeep Gladiator, 42-Studebaker Station Wagon, 73, 6 & 54
\$75 - \$125

781
6 boxed Matchbox Regular Wheels British Saloons inc. 53-Ford Zodiac, 65-Jaguar Sedan, 64, 33, 25 & 28
\$75 - \$125

782
5 boxed Matchbox Regular Wheels Mercedes inc. 46- 300 SE Coupe, 27-230SL, 53, 68 & 3
\$75-\$125

783
6 boxed Matchbox Regular Wheels cars inc. 38-Vauxhall Victor Estate car, 2 x Ford Corsair & Boat, 12, 36 & 56 rare Fiat 1500
\$100 - \$200

784
7 boxed Matchbox Regular Wheels Buses inc. 2 x 5-London Bus, 2 x 74 Daimler Bus, 66 & 40
\$125 - \$175

785
2 boxed Matchbox Regular Wheels Racing Cars inc. 52- B.R.M. & 73-Ferrari
\$50 - \$70

786
4 boxed Matchbox Regular Wheels Vans etc inc. 34-VW Camping Car, 60, 7 & 14
\$75 - \$100

- 787
4 boxed Matchbox Regular Wheels inc. 18-Field Car, 72, 54 & 67
\$50 - \$75
- 788
6 boxed Matchbox Regular Wheels Farm vehicles inc. 37-Cattle Truck, 43-Pony Trailer, 51, 40, 50 & 17
\$100 - \$150
- 789
4 boxed Matchbox Regular Wheels Vans inc. 34-VW Camper, 70, 60 & 46
\$75 - \$125
- 790
5 boxed Matchbox Regular Wheels Vans inc. 62 TV Service Van, 21, 62, 74 & 37
\$100 - \$150
- 791
2 boxed Matchbox Regular Wheels Caravans inc. 2 x 23 variants
\$50 - \$75
- 792
3 boxed Matchbox Regular Wheels Tractors etc inc. 16-Case Tractor, 50 & 65
\$50 - \$75
- 793
5 boxed Matchbox Regular Wheels Motorbikes & Boats inc. 9-Cabin Cruiser, 4-Triumph Motorcycle with sidecar, 66, 38 & 48
\$150 - \$250
- 794
5 boxed Superfast specials inc. 43-Pony Trailer, 38-Honda Motorcycle & Trailer, 72, 57 & 9-Boat & Trailer
\$75 - \$125
- 795
10 boxed Superfast Trucks inc. 13-Dodge Wreck Truck, 30-8 Wheel Crane, 28-Mack Dump Truck, 35, 74, 50, 63, 48, 15 & 37
\$125 - \$175
- 796
10 boxed Superfast Sedans & Wagons inc. 2 x 53 Ford Zodiac, 56 BMC 1800 Pininfarina, 36-Opel Diplomat, 25-Ford Cortina G.T., 56, 54, 31, 73, 67 & 64
\$125 - \$175
- 797
9 boxed Superfast Sports Cars inc. 20-Lamborghini Marzal, 75-Ferrari Berlinetta, 41-Ford G.T., 29, 8, 27, 68, 33, & 45
\$125 - \$175
- 798
6 boxed Superfast British vehicles inc. 2 x 54 Ford Capri (2 variants), 60 Lotus Super 7, 12, 17 & 57
\$75 - \$125
- 799
5 boxed Superfast German vehicles inc. 2 x 27-Mercedes 230 SL (2 variants), 6-Mercedes 350SL, 23 VW Camper & 23
\$75 - \$125
- 800
6 boxed Superfast Racing Cars inc. 2 x 24-Team Matchbox, 2 x 34-Formula 1 Racing Car (2 variants), 29 & 13
\$75 - \$125
- 801
8 boxed Superfast Exotics inc. 27-Lamborghini Countach, 41-Siva Spider, 53-Tanzara, 19, 51, 36, 33 & 65
\$100 - \$150
- 802
10 boxed Superfast Exotics inc. 9-AMX Javelin, 3-Monteverdi Hai, 75-Alfa Carabo, 5, 66, 22, 36, 62, 40 & 32
\$125 - \$175
- 803
10 boxed Superfast American Cars inc. 2 x 55-Police Car (2 variants), 2 x 59-Police Car (2 variants), 2 x 41-Ford G.T. (2 variants), 72, 8, 6 & 73
\$125 - \$175
- 804
7 boxed Superfast Dragsters & Funny Cars inc. 43-Dragon Wheels, 64-Slingshot, 11-Flying Bug, 25, 4, 31 & 61
\$75 - \$150
- 805
6 boxed Superfast Dragsters & Funny Cars inc. 70-Dragster, 48-Pi-Eyed Piper, 26, 37, 42 & 61
\$75 - \$150
- 806
9 boxed Superfast Dragsters & Funny Cars inc. 74-Toe Joe, 7-Hairy Hustler, 1-Mod Rod, 62, 46, 2, 21, 56 & 30
\$125 - \$200
- 807
5 boxed Superfast Rola-Matics inc. 67-Hot Rocker, 73-Weasel, 39, 28 & 16-Badger
\$75 - \$125
- 808
5 boxed Superfast Rola-Matics inc. 69-Turbo Fury, 35 Fandango, 10-Piston Popper, 57 & 47
\$75 - \$125
- 809
4 boxed Superfast Choppers inc. 71-Jumbo Jet, 38-Stingeroo, 49-Chop Suey & 18
\$50 - \$100
- 810
8 boxed '75' series Superfast Dragsters & Funny cars inc. 55-Hellraiser, 2 x 34-Vantastic, 59-Planet Scout, 8, 64, 14 & 68
\$75 - \$150
- 811
5 boxed '75' series Superfast 'Streakers' inc. 53-Tanzara, 41-Siva Spyder, 66, 27 & 75
\$50 - \$100
- 812
9 boxed '75' series Superfast Trucks & Militaries inc. 45-Kenworth, 54 Armoured Jeep, 19, 61, 66, 72, 54, 70 & 32
\$100 - \$150
- 813
5 boxed '75' series Superfast Trains inc. 47-Pannier Locomotive, 24, 44, 25 & 43
\$50 - \$75
- 814
11 boxed '75' series Superfast Trucks inc. 58-Faun Dump Truck, 26-Site Dumper, 72-Bomag, 36, 23, 19, 37, 32, 29, 48 & 64
\$100 - \$150
- 815
11 boxed '75' series Superfast Planes, Boats & Motorbikes inc. 50-Harley Davidson, 30-Swamp Rat, 27-Swingwing, 33, 75, 5, 2, 75, 52, 2-Rescue Hovercraft & 18
\$100 - \$150
- 816
14 boxed '75' series Superfast Vans & Trucks inc. 46-Ford Tractor, 54-Nasa Tracking Vehicle, 71 Cattle Truck, 13, 30, 49, 26, 22, 42, 11, 54, 35, 61 & 57
\$150 - \$200
- 817
9 boxed '75' series Superfast Vans & Pick Ups inc. 38-Camper, 38-Model A Van, 40-Horsebox, 42, 31, 51, 68, 66 & 69
\$75 - \$125
- 818
8 boxed '75' series Superfast Vans & Pick Ups inc. 2 x 60- Holden Pick-Up, 37-Matra Rancho, 5, 53, 5-U.S. Mail, 68 & 63
\$75 - \$125



827



829



588



587 detail



590



585

819
10 boxed '75' series Superfast Sports
& Sedans inc. 70-Ferrari, 45-BMW,
3-Porsche Turbo, 21, 59, 42, 25, 74,
52 & 12
\$100 - \$150

820
8 boxed '75' series Superfast Sedans
inc. 55-Ford Cortina, 28-Lincoln
Continental, 10, 34, 7, 74, 59 & 21
\$75 - \$125

821
11 boxed '75' series Superfast Racing
Cars & Vans inc. 28-Formula Racing
Car, 51-Pontiac Firebird SE, 36, 20,
65, 41, 9, 56, 47, 73 & 8
\$100 - \$150

822
2 boxed '75' Sedans – rare
numbered cars, 78-Datsun 280ZX &
79-Mitsubishi Galant
\$40 - \$60

823
Box lot of approx. 35 loose Regular
Wheels, Superfast & Vans, Cars,
Commercials & Militaries
\$100 - \$200

824
10 loose 1960s boxes
\$50 - \$100

825
14 loose late 60s & 70s boxes
\$75 - \$125

826
6 Dinky Toys Road signs
\$50 - \$75

827
Norton 500 Single circa 1927/28 –
excellent project bike
\$2000 - \$3000
see col ill pg 36



827

828
Norton V-Twin Special circa 1930s
\$600 - \$800

829
Norton ES2 circa 1948 - 49
\$5000 - \$7000
see col ill pg 36



829

830
LE Velocette in near complete
condition
\$300 - \$600

831
LE Velocette rolling frame & body
parts
\$150 - \$300

832
DKW/Auto Union Scooter bodies &
engine parts etc
\$200 - \$300

833
Honda 50 Rolling Frame & Body
with some parts
\$100 - \$200

834
Triumph 350 Twin – note 1967 frame
with 1966 engine
\$600 - \$800

835
BSA C11 250cc OHV circa 1949
\$400 - \$600

836
Early V Twin Special
\$600 - \$800

837
Velo Bradshaw Special with rare
Bradshaw motorcycle engine
\$400 - \$600

838
Triumph 350 Twin circa 1966/67
\$600 - \$800

839
Yamaha 750 DOHC Tourer circa
1970/75
\$1000 - \$2000

840
BSA C11G (incorrect tank)
\$500 - \$700

841
Early Harley Davidson parts inc. ½
fuel tank, front guard and various
parts
\$300 - \$400

842
Possible BSA Gearbox & engine
combined
\$100 - \$200

843
Box Lot of various items inc.
instruments and shock absorber
\$100 - \$200

| | | |
|---|--|---|
| 844 Box Lot of assorted lamps \$75 - \$125 | 857 Box Lot of assorted springs, clutch levers & pedals \$100 - \$150 | 869 Royal Enfield parts inc. red fuel tank \$200 - \$300 |
| 845 Box Lot of various lamps and fittings &75 - \$125 | 858 Box Lot of assorted lights \$100 - \$200 | 870 Royal Enfield parts inc. frame \$200 - \$300 |
| 846 Loose Chain \$20 - \$40 | 859 Box Lot of Assorted electrical \$75 - \$150 | 871 Royal Enfield parts inc. turquoise fuel tank \$200 - \$300 |
| 847 Various components inc. fender \$50 - \$75 | 860 Assorted front forks \$50 - \$100 | 872 Box Lot of Royal Enfield parts \$100 - \$200 |
| 848 Assorted levers \$75 - \$100 | 861 Box Lot possible Norton gearbox casings & parts \$150 - \$200 | 873 Early Motorcycle gauge to 120mph \$100 - \$150 |
| 849 4 Crank cases \$100 - \$200 | 862 Box Lot various Triumph tinware \$200 - \$300 | 874 1960s Triumph speedo gauge \$100 - \$200 |
| 850 Box Lot of Gearboxes and Norton parts \$200 - \$300 | 863 No Lot | 875 3 gauges \$75 - \$100 |
| 852 Box Lot of various gearbox cogs \$100 - \$200 | 864 Box Lot Velocette parts \$75 - \$125 | 876 Two leather riding coats |
| 853 Box Lot of various crankcases \$100 - \$200 | 865 Box Lot various Triumph Parts \$100 - \$200 | 877 Cut steel J. P. (Pat) Newman shop sign and illuminated ring model see illus back cover |
| 854 Box Lot of carburettor parts & oil tanks \$100 - \$200 | 866 Box Lot of Gearbox casings inc. Norton \$100 - \$200 | |
| 855 Japanese motorcycle frame \$50 - \$100 | 867 Box Lot assorted parts \$100 - \$200 | |
| 856 Box Lot of various cylinders & gearbox cogs \$50 - \$100 | 868 Box Lot of assorted parts \$200 - \$300 | |



611



610



647



547



394



393



779A



776



574

ART+OBJECT

THE 21ST CENTURY AUCTION HOUSE

VALUATION SERVICES

Recent commissions include:

Auckland Art Gallery Toi o Tamaki

North Otago Museum

Te Papa Tongarewa

Waitakere City Council

City Gallery Wellington Te Whare Toi

Auckland City Libraries Tamaki Pataka Korero

Rotorua Museum Te Whare Taonga o Te Arawa

Christchurch Art Gallery Te Puna o Waiwhetu

New Zealand Historic Places Trust

Auckland War Memorial Museum

Sarjeant Gallery Te Whare o Rehua Whanganui

Hawkes Bay Museum + Art Gallery

The Portage Trust

Ernst & Young Auckland, Wellington, Christchurch

Auckland City Council

IAG/NZI

Forty marae across New Zealand

Special Projects

NZ Pottery Collection

Special Projects

Peter Saubier Sculpture Collection

The Parihaka Collection

Photography + Cartography

Taonga, Fine + Applied Arts

Fine Arts Collection

Ten North Island Properties

Special Projects

Fine Arts Collection

Collection of Taonga, Fine + Applied Arts

Fine + Applied Arts Collection

Art Collection

Aotea Square Sculpture

Corporate Collection

Carvings and associated taonga



James Parkinson outside Kemp House, Kerikeri, a Historic Places Trust House. The chattels and artefacts associated with the house are part of the Trust's collections in the North Island recently valued by Art + Object.

To discuss commissioning an ART+OBJECT valuation contact James Parkinson,

09 354 4646 mob 021 222 8184 james@artandobject.co.nz

CONTACTS



HAMISH CONEY
Managing Director
hamish@artandobject.co.nz
021 509 550



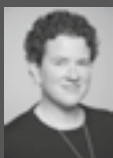
BEN PLUMBLY
Director Art
ben@artandobject.co.nz
021 222 8183



JAMES PARKINSON
Director Valuations
james@artandobject.co.nz
021 222 8184

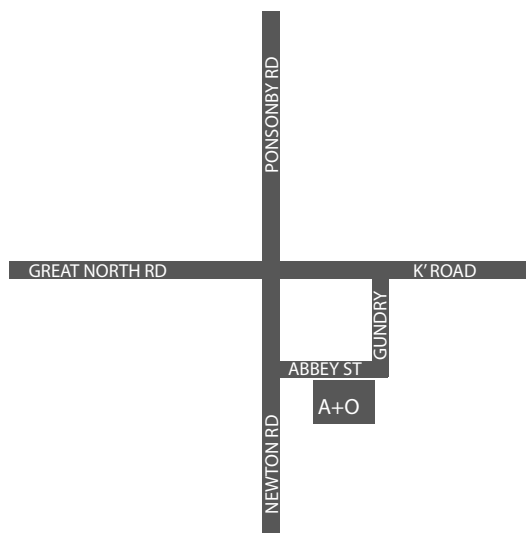


ROSS MILLAR
Director Objects
ross@artandobject.co.nz
021 222 8185



LEIGH MELVILLE
Front of House Manager
leigh@artandobject.co.nz
09 354 4646

THE 21ST CENTURY AUCTION HOUSE
ART + OBJECT



3 Abbey Street,
Newton
PO Box 68 345,
Newton
Auckland 1145,
New Zealand

Telephone +64 9 354 4646
Freephone 0800 80 60 01
Facsimile +64 9 354 4645
info@artandobject.co.nz
www.artandobject.co.nz



SUBSCRIBE TO THE INDUSTRY LEADING AUCTION CATALOGUES.
OR GIVE A SUBSCRIPTION AS A GIFT TO ART LOVING FRIENDS

Over time these become an important archive of events, art and objects.

A subscription guarantees a minimum of six catalogues per annum often up to ten
along with any additional material Art+Object publishes
delivered free to your preferred address.

NEW ZEALAND \$100.00

SUBSCRIPTION RATES INCLUDE GST + POSTAGE:

AUSTRALIA \$160.00

REST OF THE WORLD (AIRMAIL FASTPOST) \$275.00

MR/MRS/MS: _____ SURNAME: _____

POSTAL ADDRESS: _____

STREET ADDRESS: _____

BUSINESS PHONE: _____ MOBILE: _____ FAX: _____

EMAIL ADDRESS: _____

Please find my CHEQUE enclosed ☐ or charge my VISA ☐ MASTERCARD ☐

CARD NUMBER: _____ EXPIRY DATE: _____

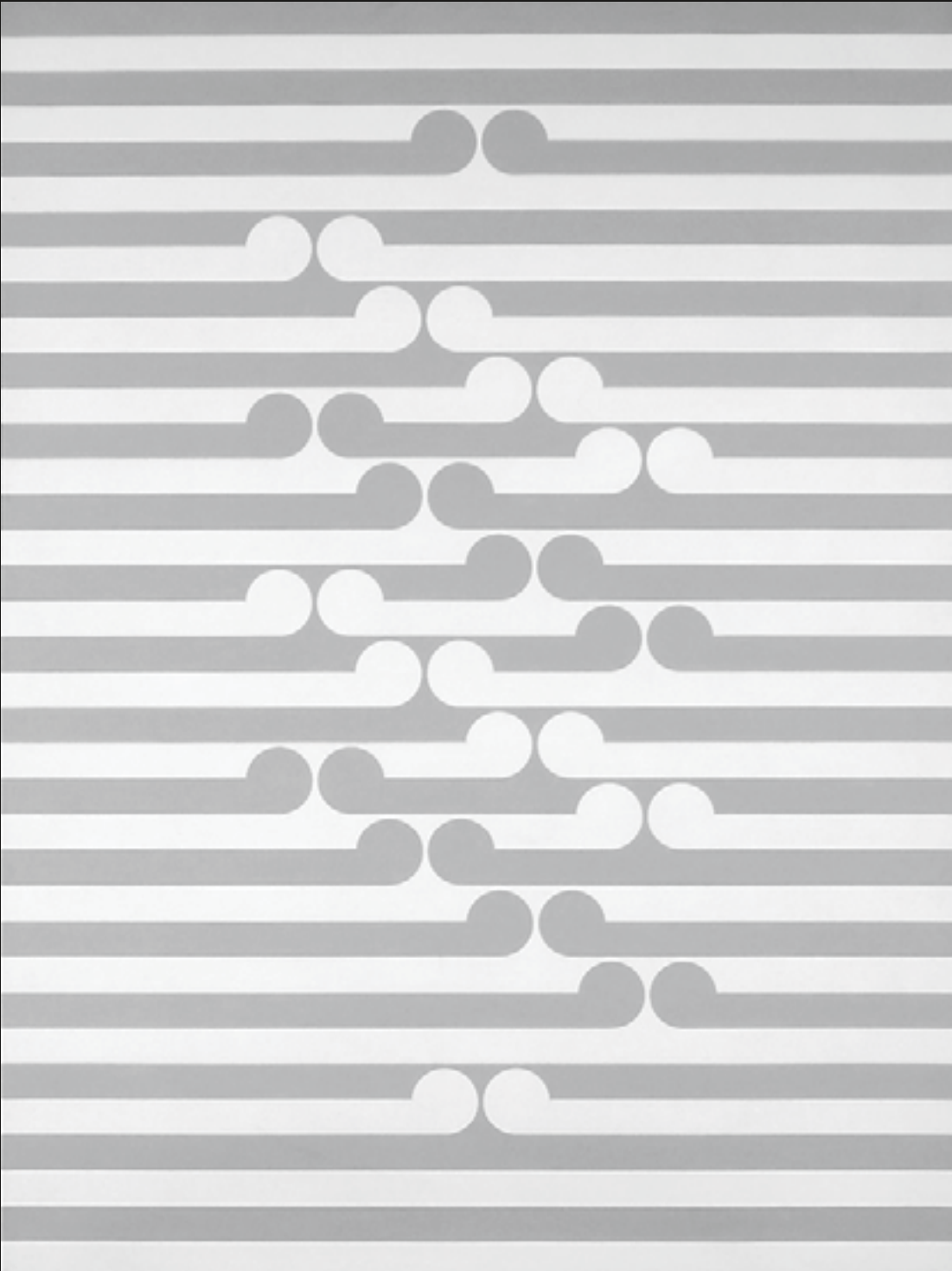
Post with cheque to ART+OBJECT, PO Box 68 345 Newton, Auckland 1145, New Zealand.
Fax with credit card details to +64 9 354 4645. Download this form from www.artandobject.co.nz

ART+OBJECT 3 Abbey Street, Newton, Auckland, New Zealand. Telephone +64 9 354 4646, Freephone 0800 80 60 01

THE 21ST CENTURY AUCTION HOUSE

ART + OBJECT

Gordon Walters *Untitled* PVA and acrylic on canvas, 1972, 1220 x 910mm. Exhibited: Gordon Walters, Auckland City Gallery, March - April, 1983. \$300,000 - \$400,000



IMPORTANT PAINTINGS AND CONTEMPORARY ART
MARCH 25

3 Abbey Street, Newton
PO Box 68 345, Newton
Auckland 1145
Telephone 09 354 4646
Freephone 0800 80 60 01
Facsimile 09 354 4645
www.artandobject.co.nz

This completed and signed form authorizes ART+OBJECT to bid on my behalf at the above mentioned auction for the following lots up to prices indicated below. These bids are to be executed at the lowest price levels possible.

[illegible]

Please indicate as appropriate by ticking the box: PHONE BID ☐ ABSENTEE BID ☐

MR/MRS/MS: _____ SURNAME: _____

POSTAL ADDRESS: _____

STREET ADDRESS: _____

BUSINESS PHONE: _____ MOBILE: _____

FAX: _____ EMAIL: _____

Signed as agreed: _____

1. Fax this completed form to ART+OBJECT +64 9 354 4645
2. Email a printed, signed and scanned form to: info@artandobject.co.nz
3. Post to ART+OBJECT, PO Box 68 345 Newton, Auckland 1145, New Zealand

ART+OBJECT 3 Abbey Street, Newton, Auckland, New Zealand. Telephone +64 9 354 4646, Freephone 0800 80 60 01

CONDITIONS OF SALE

NOTE IT IS ASSUMED THAT ALL BIDDERS AT AUCTION HAVE READ AND AGREED TO THE CONDITIONS DESCRIBED ON THIS PAGE. ART+OBJECT DIRECTORS ARE AVAILABLE DURING THE AUCTION VIEWING TO CLARIFY ANY QUESTIONS YOU MAY HAVE.

1 REGISTRATION: Only registered bidders may bid at auction. You are required to complete a bidding card or absentee bidding form prior to the auction giving your correct name, address and telephone contact + supplementary information such as email addresses that you may wish to supply to ART+OBJECT

2 BIDDING: The highest bidder will be the purchaser subject to the auctioneer accepting the winning bid and any vendor's reserve having been reached. The auctioneer has the right to refuse any bid. If this takes place or in the event of a dispute the auctioneer may call for bids at the previous lowest bid and proceed from this point. Bids advance at sums decreed by the auctioneer unless signaled otherwise by the auctioneer. No bids may be retracted. The auctioneer retains the right to bid on behalf of the vendor up to the reserve figure.

3 RESERVE: Lots are offered and sold subject to the vendor's reserve price being met.

4 LOTS OFFERED AND SOLD AS DESCRIBED AND VIEWED: ART+OBJECT makes all attempts to accurately describe and catalogue lots offered for sale. Notwithstanding this neither the vendor nor ART+OBJECT accepts any liability for errors of description or faults and imperfections whether described in writing or verbally. This applies to questions of authenticity and quality of the item. Buyers are deemed to have inspected the item thoroughly and proceed on their own judgment. The act of bidding is agreed by the buyer to be an indication that they are satisfied on all counts regarding condition and authenticity.

5 BUYERS PREMIUM: The purchaser by bidding acknowledges their acceptance of a buyers premium of 15% + Gst on the premium to be added to the hammer price in the event of a successful sale at auction.

6 ART+OBJECT IS AN AGENT FOR A VENDOR: A+O has the right to conduct the sale of an item on behalf of a vendor. This may include withdrawing an item from sale for any reason.

7 PAYMENT: Successful bidders are required to make full payment immediately post sale – being either the day of the sale or the following day. If for any reason payment is delayed then a 20% deposit is required immediately and the balance to 100% required within 3 working days of the sale date. Payment can be made by Eftpos, bank cheque or cash. Cheques must be cleared before items are available for collection. Credit cards are not accepted.

8 FAILURE TO MAKE PAYMENT: If a purchaser fails to make payment as outlined in point 7 above ART+OBJECT may without any advice to the purchaser exercise its right to: a) rescind or stop the sale, b) re offer the lot for sale to an underbidder or at auction. ART+OBJECT reserves the right to pursue the purchaser for any difference in sale proceeds if this course of action is chosen, c) to pursue legal remedy for breach of contract.

9 COLLECTION OF GOODS: Purchased items are to be removed from ART+OBJECT premises immediately after payment or clearance of cheques. Absentee bidders must make provision for the uplifting of purchased items

10 BIDDERS OBLIGATIONS: The act of bidding means all bidders acknowledge that they are personally responsible for payment if they are the successful bidder. This includes all registered absentee or telephone bidders. Bidders acting as an agent for a third party must obtain written authority from ART+OBJECT and provide written instructions from any represented party and their express commitment to pay all funds relating to a successful bid by their nominated agent.

11 BIDS UNDER RESERVE & HIGHEST SUBJECT BIDS: When the highest bid is below the vendor's reserve this work may be announced by the auctioneer as sold 'subject to vendor's authority' or some similar phrase. The effect of this announcement is to signify that the highest bidder will be the purchaser at the bid price if the vendor accepts this price. If this highest bid is accepted then the purchaser has entered a contract to purchase the item at the bid price plus any relevant buyers premium.

IMPORTANT ADVICE FOR BUYERS

THE FOLLOWING INFORMATION DOES NOT FORM PART OF THE CONDITIONS OF SALE, HOWEVER BUYERS, PARTICULARLY FIRST TIME BIDDERS ARE RECOMMENDED TO READ THESE NOTES.

(A) BIDDING AT AUCTION: Please ensure your instructions to the auctioneer are clear and easily understood. It is well to understand that during a busy sale with multiple bidders the auctioneer may not be able to see all bids at all times. It is recommended that you raise your bidding number clearly and without hesitation. If your bid is made in error or you have misunderstood the bidding level please advise the auctioneer immediately of your error – prior to the hammer falling. Please note that if you have made a bid and the hammer has fallen and you are the highest bidder you have entered a binding contract to purchase an item at the bid price. New bidders in particular are advised to make themselves known to the sale auctioneer who will assist you with any questions about the conduct of the auction.

(B) ABSENTEE BIDDING: ART+OBJECT welcomes absentee bids once the necessary authority has been completed and lodged with ART+OBJECT. A+O will do all it can to ensure bids are lodged on your behalf but accepts no liability for failure to carry out these bids. See the Absentee bidding form in this catalogue for information on lodging absentee bids. These are accepted up to 2 hours prior to the published auction commencement.

(C) TELEPHONE BIDS: The same conditions apply to telephone bids. It is highly preferable to bid over a landline as the vagaries of cellphone connections may result in disappointment. You will be telephoned prior to your indicated lot arising in the catalogue order. If the phone is engaged or connection impossible the sale will proceed without your bidding. At times during an auction the bidding can be frenetic so you need to be sure you give clear instructions to the person executing your bids. The auctioneer will endeavour to cater to the requirements of phone bidders but cannot wait for a phone bid so your prompt participation is requested.

NOTES

J.P.(PAT)NEWMAN

ART +
OBJECT
THE 21ST CENTURY
AUCTION HOUSE

WWW.ARTANDOBJECT.CO.NZ