







New Collectors Art

Tuesday 1 March at 6.00pm

The Douglas Lloyd Jenkins Collection of Modern Design and Decorator items

Wednesday 2 March at 5.30pm

The Arts of the Samurai from the collection of Harry Pappafloratos

Asian Art

Oceanic Art from a Private Collection

Thursday 3 March at 6.30pm

Please note: Auction commencement times
vary for each auction. See above.

Cover: The interior of Douglas Lloyd Jenkins former Auckland home, designed by Robin Simpson in the 1930's.

Inside front cover: lot 748 (Beswick vase), lot 515 (Shufflebotham for Crown Lynn hand-potted vase),
lot 556 (NZ 1960's Noguchi inspired coffee table), lot 547 (John Chrichton standard lamp).

Welcome to A+O's first catalogue of 2011. A+O was founded in 2007 by collectors and for collectors – the support we have enjoyed from important figures within New Zealand's visual and decorative arts worlds has been vital to the success of the company and the wide network of collector relationships we now enjoy.

This catalogue is built around five extremely diverse and fascinating collectors many of whom have high profile roles in our public life. Each collection is testimony to the unique eye and passion a long term collector brings to their chosen fields.

The Estate of Gregory Flint. Greg Flint (1952 – 2010) was one of New Zealand's pioneering art dealers. In the 80s and 90s Flint exhibited some of New Zealand's cutting edge contemporary art by artists such as Michael Stevenson, Bill Hammond, Ronnie van Hout, L.Budd, Judy Darragh, Ruth Watson, Marie Shannon and Gavin Chilcott.

The Bob and Barbara Harvey Collection. Bob Harvey is perhaps most well known as the former mayor of Waitakere and prior to that he enjoyed a long career in advertising and the media. After over 30 years in their Glenfield, Auckland home Bob and his wife Barbara will soon be moving to a new address and have decided to sell their art collection of many years. It is a veritable who's who of New Zealand art from the 1950s to the 1980s with works by Colin McCahon, Robin White, Peter and Sylvia Siddell, Gretchen Albrecht, Ruth Cole, Michael Smither and that icon of the Bronze Goat years David Kennedy.

The Douglas Lloyd Jenkins Collection of Modern Design and Decorator Items.

Douglas Lloyd Jenkins is one of the most influential writers, critics and curators to have emerged in New Zealand over the last three decades. His 2004 publication *At Home, A Century of New Zealand Design* is regarded as the definitive text on the topic and is one of the most referred to books in the A+O library. Today Douglas is the director of the Hawkes Bay Museum & Art Gallery and based in Napier. His taste has moved in a new direction and so we and many new collectors are blessed to be able to enjoy and perhaps acquire one or two of the fabulous artworks and design items in this catalogue. Please turn to page 39 for a fascinating introduction to the collection.

The catalogue is rounded out with two distinguished private collections of rare **Oceanic artefacts** and striking **Arts of the Samurai** including the collection of well known Wellington based collector and Orientalist Harry Pappafioratos.

ARTSPACE Fundraiser: Please do not miss lots 300 and 301. Kindly donated by a generous and anonymous collector these two items will be auctioned at the commencement of our March 2 auction with proceeds going to our neighbours down the road ARTSPACE.



A+O is pleased to announce the appointment of Giulia Rodighiero to the role of Operations Executive. Giulia joins A+O from Christies, London where she worked in the Asian Art Department. A specialist in Chinese Art She graduated in Chinese Studies from Ca' Foscari University, Venice, and subsequently obtained a masters degree in Asian

Arts and Archaeology from SOAS (School of Oriental and African Studies), University of London. She also spent a year in China studying Chinese Art at the Beijing University. Giulia has been instrumental in researching and preparing the Asian section of this catalogue.

We look forward to meeting new collectors at our upcoming exhibition viewing which opens on February the 25th.




Wield the precision of the new Lexus IS350 F Sport.

Real performance is wielded with precision. Real performance is the mighty 233kW of power delivered by a 3.5 litre 6 cylinder engine. Real performance is rocketing from 0-100km/h in a mere 5.6 seconds. Welcome the real performance of the stunning new 2011, IS350 F Sport. Pre-loaded with a class-beating array of advanced features for only \$103,300.

The new Lexus IS350 F Sport. Wield precision. Visit your Lexus dealer now.





Important Paintings and Contemporary Art

7 April 2011

Entries close: 11 March

Colin McCahon

Necessary Protection

synthetic polymer paint and
graphite on Steinbach paper
mounted to board (1971)

1100 x 730mm

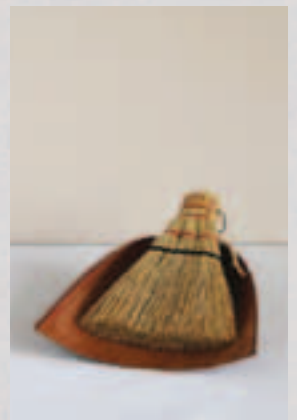
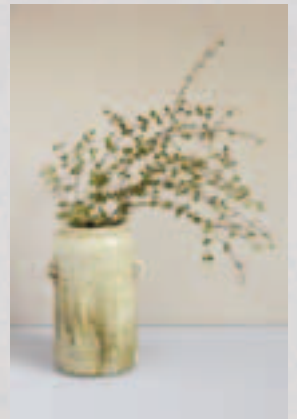
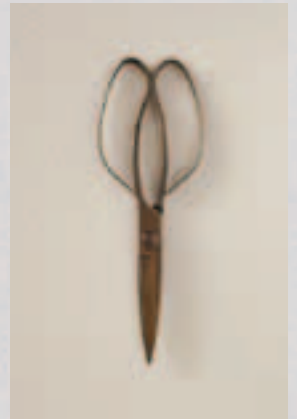
\$160 000 – \$220 000

everyday needs[®]

Katie
Lockhart's
online
homeware
store

new
stock
arriving
weekly

everyday-needs.com



INVIVO MARLBOROUGH SAUVIGNON BLANC 2010

"It delivers an enchanting balance
between the herbaceous and tropical
fruit camps"

Cuisine Magazine



5 stars and rated Top 10
Sauvignon Blancs
in New Zealand 2009 & 2010

Official Partner



For more information and Invivo outlets visit: www.invivowines.com





The Douglas Lloyd Jenkins Collection of Modern Design and Decorator Items

Auction – Wednesday 2 March at 5.30pm
3 Abbey Street, Newton, Auckland

Viewing

Friday 25 February	9am – 5pm
Saturday 26 February	11am – 4pm
Sunday 27 February	11am – 4pm
Monday 28 February	9am – 5pm
Tuesday 1 March	9am – 5pm
Wednesday 2 March	9am – 1pm

ARTSPACE fundraiser

Note: lots 300 and 301 at the commencement of the Wednesday 2 March auction are donated lots from an anonymous collector. Sale proceeds will be donated to ARTSPACE. No buyer's premium applies to these two items.

Illustrated: lot 794 (Louis Poulsen ph5 ceiling light), lot 555 (John Chrichton kauri bowl), lot 459 (Doreen Blumhardt slab-form vase), lot 787 (1950's plastic shelving unit), lot 403 (Len Castle Bottle vase), lot 492 (Charles Holmes sedge vase).

This collection began in the mid 1980s as the result of a chance encounter with the name John Crichton, in a 50s copy of the Studio Yearbook of the Decorative Arts. I was then a design student and to discover a New Zealander active in international modernism, whose name was to be found in the phonebook – seemed a very intriguing discovery indeed.

At the same time modernism itself was a discovery – and both understanding it (and living it) became the driving force of my life. Although it was to be some years before I got to meet John Crichton, I began noting works of his in second hand shops and estate clearance auctions and as they attracted little attention I acquired them. Trying to find out more led me the library and to the Art Year Books (1945-1951) and to early copies of Home & Building – these in turn led me to the other masters of local modernism – Garth Chester, Len Castle and Frank Carpay whose work I similarly gathered about me.

In 1990 when I was asked to curate the design aspects of the Auckland Art Gallery's 1950s Show I'd amassed a certain number of works by Crichton, Chester, Castle and Carpay alongside other leading local modernist designers. These would later provide the core of both my books - At Home and 40 Legends of Design. I was collecting because I wanted to write about these designers and get them some attention. In order to write you needed to be able to illustrate and to illustrate you had to have, because these works were on the whole not yet in museum collections.

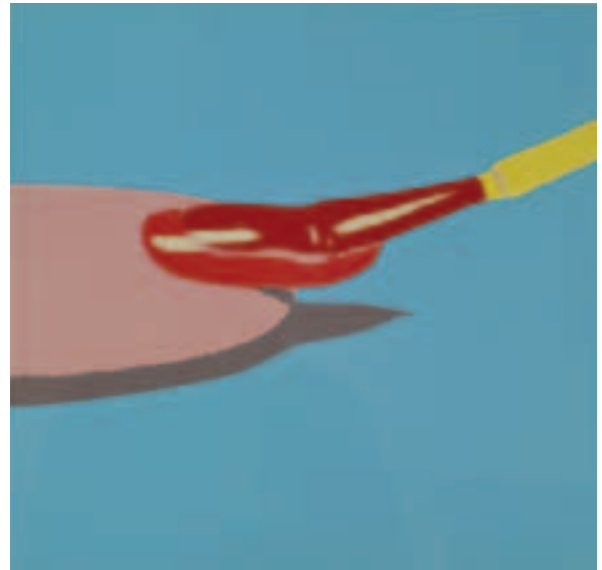
The purchase of Robin Simpson's 1930s modernist masterpiece in the early 2000s meant honing the collection – but also drawing it back to a slightly earlier period. Designers like Keith Murray were added, as were early work of pre-war modern painters and photographers, including Charles Tole, Arthur Breckon and Gerald Jones.

My approach to collecting painting was the same as my approach to design – think about the contribution made, not the reputation the artist might currently hold. Think about the quality of the work. Therefore I was pleased to add names like Ines Russell, Edgar Murphy and Nancy Parker to the collection – who are perhaps not well known but stand out as exceptional characters in the story of New Zealand art and design. I grew particularly keen on the Rutland group painters, Vida Steinert, Jack Crippen, Ruth Coyle and others – as their works reflect the way that modernism was introduced to Auckland audiences.

In the end this is a collection I loved living with, a collection that suited a modernist home and one that told a very Auckland story of twentieth century style and its pursuit.

Many of these objects came to me from the first generation of modernists who lived the philosophy and I now pass them on hoping they find like minded new owners.

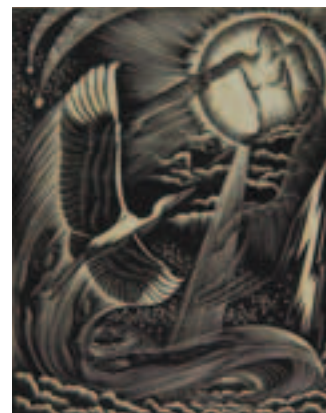
Douglas Lloyd Jenkins



264



264



264

- 300. Graham Ambrose**
Orange Orb
 glazed ceramic
 d.145mm h.115mm
 \$100 – \$200
 proceeds of this sale will be donated to
 ARTSPACE

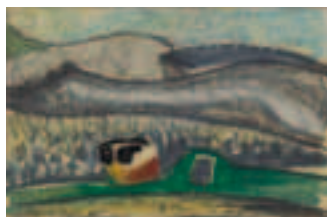
- 301. Guy Ngan**
Animated Colours
 screenprint, 29/50
 title inscribed, signed and dated '73
 1000 x 700mm
 \$1000 – \$2000
 proceeds of this sale will be donated to
 ARTSPACE



264



317



318

- 302. Arthur N Breckon**
 Edinburgh (c. 1920)
 bromide print
 470 x 440mm
 \$100 – \$200

- 303. Arthur N Breckon**
Orama Loading Apples for Britain
 silver gelatin print
 title inscribed and dated verso 1938
 380 x 420mm
 \$100 – \$200

- 304. Steven Rumsey**
Barry Woods at Retouching Desk (1953)
 Silver gelatin print
 280 x 375mm
 Illust. Gordon H Brown The Elusive Modernist
Steve Rumsey's Camera Club Photographs
 1948-1964 Art New Zealand No 108
 \$250 – \$400

- 305. Barry Woods**
The very thought of an anniversary gives me
a headache (1960)
 Silver gelatin print
 Inscribed verso
 390 x 320mm
 \$250 – \$400

- 306. White's Aviation**
Clearwater (c. 1960)
 colour photograph
 420 x 500mm
 \$50 – \$80

- 307. Gerald Jones**
Shadows of the Past
 bromide print, c. 1920
 signed and inscribed
 200 x 240mm
 \$200 – \$300

- 308. Louise Henderson**
Egyptian motif (1959)
 lithograph
 500 x 300mm
 \$600 – \$800

- 309. Paul Hartigan**
Untitled: finger nail and polish (1976)
 silkscreen print, 4/40
 signed and dated 1976
 650 x 530mm
 \$600 – \$900

- 310. Blanche Wormald**
Abstract: Set Squares (c 1950)
 pencil on paper
 signed
 490 x 430 mm
 Blanche Wormald was a leading 1940s fabric
 designer and Rutland Group member
 \$150 – \$250

- 311. Nancy Parker**
Maori
 lithograph, c. 1940
 470 x 360mm
 \$150 – \$250

- 312. R Jack Hutchinson**
Portrait of Tom Keenan
 pencil on paper
 signed
 190 x 345mm
 \$60 – \$120

- 313. Alan Maddox**
 Drawing submitted to 'small works'
exhibition Auckland Art Gallery, (but rejected
oh dear), (1984)
 coloured pencil on paper
 title inscribed verso
 335 x 280mm
 \$200 – \$300

- 314. Alan Maddox**
Untitled
 ink on paper
 200 x 150mm
 \$400 – \$600

- 315. Harry Linley Richardson**
Male Figure Study
 charcoal on paper, c. 1940
 730 x 540mm
 \$300 – \$400

- 316. Jack Crippen**
Nudes Study, London
 conte crayon on paper
 signed and dated '50
 850 x 580mm
 \$300 – \$500

- 317. Charles Tole**
Hills, Karekare (c. 1955)
 oil pastel and pencil on paper
 titled inscribed and signed verso
 260 x 285mm
 \$400 – \$600

- 318. Charles Tole**
Sand Hills, Karekare (c1955)
 oil pastel on paper
 titled inscribed and signed verso
 260 x 285mm
 \$400 – \$600

- 319. Alison Pickmere**
Untitled Landscape
 oil on paper, c. 1960
 signed
 320 x 370mm
 \$200 – \$300

- 320. Nancy McDonald (Letherby)**
Figure Drawing
 pencil on paper, c. 1935
 signed
 300 x 370mm
 \$50 – \$100

- 321. E Mervyn Taylor**
The Sacred White Heron (c. 1950)
 wood engraving, edition of 40
 signed and inscribed
 335 x 300mm
 \$800 – \$1 200

- 322. E Mervyn Taylor**
Weta (1946)
 wood engraving, edition of 35
 signed and dated '46
 270 x 190mm
 \$300 – \$500

- 323. Fred Thorpe**
Flats Herne Bay
 linocut on paper, c. 1935
 signed with initials FT
 300 x 240mm
 \$100 – \$200



340



329



339



341



337



352



355



353

- 324. Rona Dyer**
Untitled Male figure
 wood engraving, 4/25, c. 1950
 signed
 400 x 340mm
 \$300 – \$500

- 325. Alfred Cook**
Aorangi
 wood engraving, c. 1940
 signed
 220 x 250mm
 \$200 – \$400

- 326. Jeffery Harris**
The Growth of a Dead Child (1977)
 etching, 22/30
 title inscribed, signed and dated 1977
 140 x 105mm
 \$500 – \$700

- 327. William Mason**
Head of a Boy
 oil on board, c. 1960
 signed
 360 x 340mm
 Exhibited: Hawke's Bay Museum, Napier
Mason Handprints 1997
 \$500 – \$700

- 328. Keith Patterson**
Two Men with Guitars (1959)
 mixed media on board
 910 x 670mm
 \$800 – \$1200

- 329. Keith Patterson**
Two Goats (1956)
 mixed media on paper
 signed verso
 930 x 690mm
 \$900 – \$1400

- 330. Paul Tangata**
Untitled landscape (c. 1960)
 oil on board
 signed verso
 620 x 975mm
 \$300 – \$500

- 331. Arthur Funnell**
House, West Auckland
 watercolour
 signed and dated 1944
 470 x 570mm
 \$200 – \$400

- 332. Selwyn Muru**
Ochre Landscape
 oil on board, c. 1965
 titled verso
 510 x 710mm
 \$400 – \$700

- 333. Selwyn Muru**
Untitled Taupiri Mountain
 oil on board, c. 1965
 second painting verso
 540 x 640mm
 \$500 – \$800

- 334. Selwyn Muru**
Ochre Landforms
 oil on board, c. 1965
 425 x 320mm
 \$400 – \$700

335. A R D Fairburn
Bronze Hills
watercolour
signed and dated '45
440 x 575mm
\$400 – \$600

336. Freda Simmonds
Red Cliffs, Kerr Point
oil on board
signed and dated '66
470 x 770mm
Provenance: previously in the
collection of E A McCormack
\$100 – \$200

337. Helen Brown
Untitled: Tidal Landscape
oil on board, c. 1965
signed
490 x 730mm
\$1 200 – \$1 500

338. J Edward Murphy
Two Apostles
oil on board
inscribed verso
690 x 580mm
Provenance: previously in the
Collection of John Middleditch
\$800 – \$1200

339. Dennis Knight Turner
20: Bison (1957)
mixed media on paper
550 x 450mm
\$700 – \$1 000

340. Denis Knight Turner
23: Deer (1957)
mixed media on paper
585 x 500mm
\$800 – \$1 200

341. Tim Garrity
Auckland Harbour off Takapuna – for Mike Draffin (1977)
coloured pencil on paper
title inscribed; signed and dated 1977 verso
680 x 675mm
\$400 – \$700

342. Artist Unknown
Head of a Man
oil on board, c. 1950
440 x 350mm
Provenance: purchased from
the estate of Charles Tole
\$150 – \$250

343. H E Read
Abstract
oil on canvas, c. 1950
signed
260 x 300mm
\$200 – \$300

344. Russell Clark
Abstract (Anchor form)
painted plaster, c. 1960
220mm H
\$800 – \$1 200

345. Inez Russell
Head of Christ
carved kauri, c. 1950
510 H
\$200 – \$300

346. Paul Beadle
Head
ceramic, c. 1960
80mm L
\$200 – \$400

347. Greer Twiss
Untitled: Hand with Pencil
bronze, c. 1975
145mm L
\$300 – \$500

348. James Bowie
Untitled: Wave & Starfish
carved kauri, c. 1955
160 x 290mm
\$100 – \$200

349. James Bowie
Untitled: Primitive figure
carved kauri, c. 1955
970mm H
\$200 – \$400

350. Artist unknown
Abstract form in style of Barbara Hepworth
carved kauri, c. 1955
190 x 155mm
\$50 – \$100

351. Helene Carkeek
Cat with Two Lives
crayon on paper, 1968
520 x 380mm
\$200 – \$400

352. Jack Crippen
Landscape
Oil on board
Signed and dated '40
455 x 395mm
\$500 – \$800

353. Vida Steinert
Spanish Dancer
oil on board, 1955
560 x 450mm
\$500 – \$700

354. Vida Steinert
Road to Colville
oil on board
560 x 450mm
Signed
495 x 345mm
\$600 – \$900

355. Helen Brown
Untitled landscape
watercolour
signed and dated '57
200 x 275mm
\$400 – \$600

356. Hildegard Read
Stewart Island beach scene
pastel on paper, c. 1950
295 x 375mm
\$100 – \$150

357. Ruth Coyle
King Country landscape
Oil on board
Signed and dated '58
445 x 550mm
\$200 – \$300

358. Hall Thorpe
The Chinese Vase
Woodcut print
485 x 325mm
Signed and inscribed with title
\$100 – \$200
1254/95

359. William Mason
Untitled, wallpaper sample
Screenprinted wallpaper, c. 1965
185 x 380mm
\$150 – \$250
1254/83

360. William Mason
Corona (black & white)
handprinted wallpaper, c. 1970
\$200 – \$300



359



360

361. **John Kavanagh**
Fitter and turner
plaster relief, 1940
450 x 450mm
\$300 – \$500
Created for Walthamstow Town Hall.
Concrete relief version is now decoration
on columns of the building- design also
intended to provide panels for bronze doors
never completed due to war. Kavanagh was
later sculpture master at Elam.
362. Dennis Knight Turner
Untitled – Curly Goat
watercolour
signed and dated 1956
365 x 270mm
\$800 – \$1200
363. Folk art painting of Te Whiti O Rongomai
oil on board
signed verso
660 x 530mm
\$500 – \$800
364. E. Mervyn Taylor
The Sacred White Heron
wood engraving
signed and dated 1957
220 x 170mm
\$800 – \$1200
365. Ted Dutch
There's no life here, beam me up Scotty
screenprint
signed and titled verso
350 x 540mm
\$600 – \$1000
366. Eileen Mayo
Pacific Genesis
lithograph
520 x 320 mm
\$800 – \$1200
367. Eileen Mayo
Gently Floating Form
lithograph
550 x 350mm
\$800 – \$1200
368. Ted Dutch
Film set
screenprint
title inscribed, signed and dated '64
350 x 540 mm
\$800 – \$1200
369. Mary Russell
Namui
screenprint
title inscribed, signed and dated 1973
\$200 – \$400
370. Paul Hartigan
Yella Fella
artist's proof
400 x 285mm
\$500 – \$1000
371. Denys Watkins
Vacation
screenprint
title inscribed, signed and dated 1975.
400 x 310mm
\$800 – \$1200
372. A. S. Patterson
Untitled
ink drawing
265 x 265mm
\$500 – \$800
373. Joan Lindsay
Untitled – Seagulls and Rocks
oil on board
signed and dated '77
520 x 660
\$500 – \$1000mm
374. Don Ramage
The Last Flight
lithograph
signed and dated 1972
470 x 600mm
\$500 – \$800
375. Brian Dahlberg
Northland Coastal Landscape
oil on board
590 x 890mm
\$350 – \$700
376. Frank Womble
Time Life Series, Barry Lett Gallery
mixed media on board
800 x 470mm
\$400 – \$800
377. Roy Cowan
Two Fish
screenprint 1/15
380 x 450 mm
\$100 – \$200
378. Roy Cowan
Plant Form and Cityscape
screenprint
370 x 530
\$100 – \$200
379. Roy Cowan
Wrecking Yard and Tree
screenprint
380 x 480mm
\$100 – \$200
380. Russian artist unknown
Adam and Eve
oil on canvas
unsigned
1980 x 1400mm
\$400 – \$800
381. James Hodgins
Untitled – Architectural concept painting
oil on canvas on board
570 x 1080mm
\$200 – \$400
382. Peter Saubier
Sword and Scabbard
constructed from found materials, signed
and dated 1998
L. 710mm
\$500 – \$800
383. Peter Saubier
Indonesian style dagger
constructed from found objects, signed and
dated 1998
L. 470mm
\$350 – \$600
384. Peter Saubier
Dodge
bird sculpture made from early Dodge car
parts
H.930mm
\$2500 – \$3500
385. Peter Saubier
Ara cheeky
Bird sculpture made from found metal parts
H.920mm
\$3000 – \$4000
- 386. Collection of printers blocks**
Artists include Denis Knight Turner, E Mervyn
Taylor etc.
\$200 – \$300
387. David Kennedy
Copper Shield (Starburst centre pattern)
beaten and incised copper
D.1200mm variable
\$800 – \$1200
388. David Kennedy
Copper Shield (Hollow centre pattern)
beaten and incised copper
D.1200mm variable
\$800 – \$1200
Auckland sculptor and designer David
Kennedy was a well known figure in the
1950s. His work was celebrated at the 2008
Lopdell House exhibition The Bronze Goat.
He was associated with the earliest days of
the Auckland restaurant scene in the 1950s.
His designs, murals and sculptures adorned
such well known establishments as The
Gourmet and the Bronze Goat.
389. Vintage Tukutuku craft panel by Peter
Coatsworth in the poutama pattern with
carved frame
760 x 540mm
\$400 – \$800
390. Elizabeth McLure
Battuto (XL)
blown glass, sandblasted, engraved and
carved vase
signed and dated 11/97
H. 290mm
\$1000 – \$2000
- 390a. Philip Baldwin and Monica Guggisberb,
blown glass footed bowl
\$250 – \$350



390



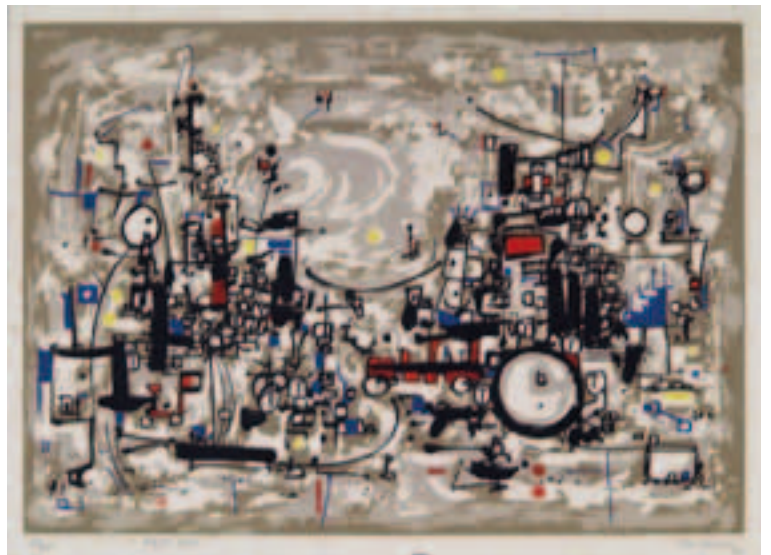
345



387



370



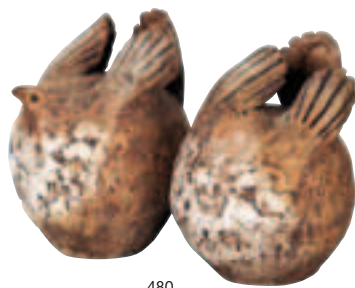
368

New Zealand Ceramics

- 391. Briar Gardner**, small green and yellow vase earthenware, c.1941
\$40 – \$80
- 392. Briar Gardner**, straw coloured earthenware trough vase, c. 1941 (hairline crack)
\$40 – \$80
- 393. Patricia Perrin**, earthenware vase in green with white rim, c. 1950
\$100 – \$200
- 394. Patricia Perrin**, two tone brown earthenware jug, c. 1960, H.300mm
\$300 – \$500
Provenance: Collection of John Greer, Swanson. A companion jug is in the collection of the Auckland Museum.
- 395. Mary Hardwicke-Smith**, two earthenware bowls in yellow and blue
\$40 – \$80
- 396. Harry & May Davis for Crewenna Pottery**
A pair of earthenware lidded tureens, c. 1965
\$50 – \$100
Provenance: Formerly in the collection of Ray Chapman-Taylor
- 397. Frank Carpay for Crown Lynn**, four earthenware dinner plates, c. 1955, D.260mm
\$200 – \$400
- 398. Frank Carpay for Crown Lynn**, glazed vase with painted mark H:12 & signed but undecorated
c. 1955, H.200mm
\$800 – \$1 200
- 399. Richard Cadness**, stoneware vase, c. 1970, 160 x 190mm
\$100 – \$200
- 400. Simon Englehardt**, footed earthenware bowl AF, c. 1960 125 x 155mm
\$50 – \$100
Provenance: formerly in the collection of fashion designer Joan Talbot
- 401. Simon Englehardt**, baluster earthenware vase, c. 1960, 250 x 180mm
\$400 – \$800
Provenance: formerly in the collection of Frank Carpay
- 402. Mirek Smisek**, large lidded stoneware casserole, c.1965, 220 x 320mm
\$100 – \$200
- 403. Len Castle**, Bottle vase in salt glazed stoneware, c. 1950, H 290mm
\$1000 – \$1500
- 404. Len Castle**, ovoid Bottle vase salt in glazed earthenware, c. 1950, H. 290mm
\$1000 – \$1500
- 405. Len Castle**, Footed bowl in salt glazed earthenware, c. 1950, D. 200mm x H. 110mm
\$600 – \$1200
- 406. Len Castle**, small Bottle vase in salt glazed earthenware c. 1950, 190 x 130mm
\$300 – \$500
- 407. Crown Lynn** 1950 Empire Games mug
\$40 – \$80
- 408. Frank Carpay**
Ferris wheel
Hand decorated earthenware on wire framework
Exhibited: Auckland City Art Gallery 1950s Show (1991); Western Lights: Art & Design in West Auckland 1945-1980 (1994), Lopdell House Gallery, Titirangi, Auckland; Hawke's Bay Museum Frank Carpay Crown Lynn & Beyond 2002
\$2500 – \$3500
- 409. John Crichton**, nine hand-painted circular ceramic coasters, c. 1970, adhesive sticker verso, D. 90mm
\$200 – \$400
- 410. John Crichton**, three square hand-painted ceramic coasters, c. 1970, initialed JC with adhesive sticker verso, H.155 x W. 155mm
\$200 – \$400
- 411. John Crichton**, four square hand-painted ceramic coasters, c. 1970, unsigned, one with adhesive sticker verso, H. 155 x W 155mm
\$200 – \$400
- 412. Barry Brickell**, salt glazed stoneware jug with 'eyes' to the spout, impressed mark to the base of the handle, H.200mm
\$400 – \$500
- 413. Ross Mitchell-Anyon**, salt glazed stoneware jug, H.310mm
\$400 – \$600
- 414. Len Castle**, Crater Lake bowl in earthenware with alkaline copper glazed well, impressed artists monogram, D.430mm
\$1500 – \$2500
- 415. Len Castle**, Bottle vase in hanging form with impressed decoration, H. 410mm
\$900 – \$1400
Illustrated: Japanese Ceramic Art Vol 11, 1966. From the collection of Doreen Blumhardt
- 416. Len Castle**, tenmoku glazed lidded casserole dish
\$100 – \$200
- 417. Len Castle**, hanging form in burnt umber pigment with incised decoration, H. 200mm
\$400 – \$600
- 418. Len Castle**, tenmoku glazed shallow stoneware bowl with wax resist decoration to the well, D. 340mm
\$300 – \$500
- 419. Len Castle**, stoneware platter with shino style glaze, W. 190mm
\$200-250
- 420. Len Castle**, small ovoid stoneware vase with a rich cobalt blue glaze, H. 140mm
\$50 – \$100
- 421. Len Castle**, stoneware salt cellar with blue glazed interior and umber pigment exterior
\$150 – \$250
- 422. Len Castle**, stoneware jug with brush work gestural decoration, H. 150mm
\$100 – \$200
- 423. Len Castle**, stoneware vase of teardrop form with umber pigment glaze
\$250 – \$350
- 424. Len Castle**, stoneware vase of cylindrical form with four irregular cut outs, H. 240mm
\$200 – \$300
- 425. Len Castle**, Fossil form, L. 100mm
\$300 – \$500
- 426. A Len Castle** hanging form of unusual miniature size with twin apertures in burnt umber pigment glaze, H. 80mm
\$200 – \$400
- 427. Estelle Martin**, anagama fired ovoid vase, H. 260mm
\$300 – \$500
- 428. Estelle Martin**, anagama fired arrow vase, H. 290
\$450 – \$650
- 429. Barry Brickell**, stoneware jug, H. 170mm
\$60 – \$100
- 430. Barry Brickell**, stoneware jug, H. 170mm
\$60 – \$100
- 431. Barry Brickell**, stoneware wine bottle, incised Villa Maria to the base, H. 180mm
\$80 – \$120
- 432. Marilyn Wiseman**, large stoneware platter painted with an abstract floral design. Two hairline cracks evident to the surface, W. 450mm
\$40 – \$80
- 433. Marilyn Wiseman**, stoneware dish painted with a leaf and branch design, W. 230mm
\$125 – \$175
- 434. A John Anderson** stoneware wall plate painted with a floral and trellis design, D. 280mm
\$30 – \$50
- 435. Stan Jenkins**, hanging wall vase, umber pigment with two small lug handles to the shoulder, H. 280mm
\$50 – \$100
- 436. Andrew Van der Putten**, crackle glaze conical shaped bowl, D. 150mm
\$60 – \$100
- 437. Andrew Van der Putten**, vase painted with a fruit pattern on a blue ground, H. 130mm
\$60 – \$100
- 438. Peter Knuckey**, wine jug impressed with Corbans Wines label, H. 200mm
\$30 – \$50
- 439. Barbara Hockenhull**, porcelain handkerchief vase painted with leaves and flowers to the interior together with two vases and two mugs (5 items)
\$100 – \$150
- 440. Salt glazed bottle vase**, oil & sauce bottle and a stoneware coffee jar (4 items)
\$20 – \$40



408



480



415

441. Campbell Hegan, ovoid stoneware vase with sang de boeuf glaze together with a small vase and lidded pot (3 items)
\$100 – \$200

442. Briar Gardner, jug with mottled green & yellow glaze, a small vase and a yellow and green glazed jug (3 items)
\$100 – \$200

443. Briar Gardner, pottery canoe together with a small vase and trough vase (3 items)
\$100 – \$200

444. Audrey Lisette, pottery vase with chalice form base and circular shallow flaring top section, c. 1960's
\$30 – \$50

445. Mirek Smisek, salt glazed stoneware wine flagon and six matching wine cups
\$250 – \$350

446. Barry Brickell, four bowls, each decorated with a serpentine design through the yellow glazed interior slip, D. 150mm
\$15 – \$250

447. Peter Lange, Year of the Rat Chinese character sculptural teapot
\$300 – \$400

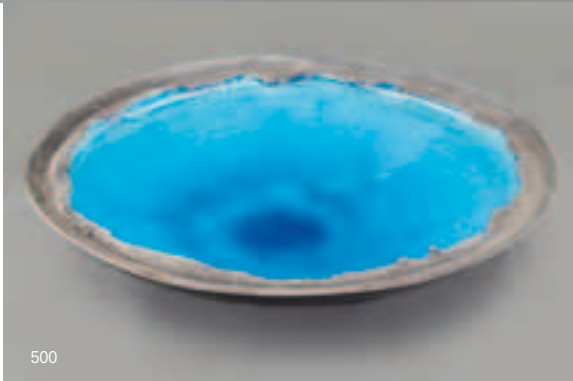
448. Barry Brickell, stoneware shallow bowl with an impressed leaf design to the interior rim, D. 380mm
\$300 – \$400

449. Marilyn Wiseman, blue glazed circular platter, D. 460mm
\$300 – \$400

450. John Crawford, pair of painted stoneware vases, H. 260mm
\$300 – \$500



490

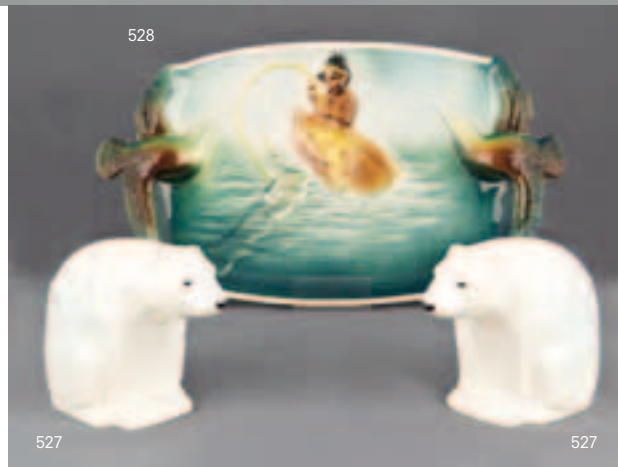


500



451. Ted Dutch, ceramic tile modelled with applied Signaler figures, the ground screenprinted with an aeronautical design, 155 x 155mm
\$600 – \$1000
452. Ted Dutch, ceramic tile with applied Signaler figure, painted with a red ground with a control tower and a figure on horseback, 155 x 155mm
\$600 – \$1000
453. Ted Dutch, ceramic tile decorated with an applied Signaler figure and a black machine with coloured rondels, 155 x 155mm
\$600 – \$1000
454. Ted Dutch, ceramic tile painted with figure on horseback on a turquoise ground, 155 x 155mm
\$400 – \$600
455. Ted Dutch Signaler figure, with red and blue painted discs, H. 115mm
\$500 – \$1000
456. Ted Dutch, Signaler figure, H. 95mm
\$400 – \$1000
457. Ted Dutch, Signaler figure, H. 145mm
\$400 – \$800
458. Ted Dutch Signaler wall mask, H. 150mm
\$350 – \$700
459. Doreen Blumhardt, rock impression slab-form vase with blue speckled glaze, impressed mark, H. 470mm
\$500 – \$1000
460. Stan Jenkins, slab vase with iron-spotted oatmeal type glaze, H. 360mm
\$150 – \$300
461. Graeme Storm, stoneware bowl with tenmoku exterior & pebble pattern to the interior, D. 310mm
\$200 – \$400
462. Harry and May Davis, Crowan pottery lamp base with wax resist foliate pattern
\$200 – \$400
463. Muriel Moody, terracotta warrior figure, H. 880mm
\$400 – \$800
464. Three Wendy Masters stoneware forms with building motifs (3 items)
\$200 – \$300
465. Steven Scholefield, Rocket pottery earthenware dish, impressed with a pattern utilizing Theo Schoon's stamps, D. 350mm
\$150 – \$250
466. Steven Scholefield, Rocket pottery earthenware dish, impressed with a pattern utilizing Theo Schoon's stamps, D. 350mm
\$150 – \$250
467. Paul Hartigan, vintage platinum tattoo-ware cup and saucer, the interior decorated with a Death before Dishonor sailor Jerry tattoo design and with various designs to the saucer
\$100 – \$200
468. Paul Hartigan, vintage platinum tattoo-ware cup and saucer, the interior decorated with a Good luck sailor Jerry inspired tattoo design and with various designs to the saucer
\$100 – \$200
469. Paul Hartigan, vintage tattoo-ware cup decorated with various sailor Jerry inspired tattoo designs
\$80 – \$120
470. Paul Hartigan, vintage tattoo-ware cup decorated with various sailor Jerry inspired tattoo designs
\$80 – \$120
471. Paul Hartigan vintage tattoo-ware bowl, the tattoo designs to the interior arranged in a skull pattern, D.200mm
\$100 – \$200
472. Paul Hartigan, vintage platinum tattoo-ware shallow bowl, the tattoo designs to the interior arranged in a skull pattern, D.240mm
\$100 – \$200
473. Paul Hartigan, vintage tattoo-ware milk jug, the designs rendered on a matt white Crown Lynn jug
\$100 – \$200
474. Paul Hartigan, pair of prototype Chinese erotica mugs
\$100 – \$200
475. Paul Hartigan, pair of prototype Chinese bowls
\$100 – \$200
476. McCreadie green glazed ashtray modelled as a pond with a frog cast in high relief, D.120mm
\$20 – \$40
477. Don Thorley, stoneware jug with applied handle
\$40 – \$80
478. Deanne Lawford Smith, stoneware female sculpture, label to the base, H. 670mm
\$500 – \$800
Deanne Lawford Smith won the Portage ceramic award in 2007
479. Rick Rudd, raku fired orb forms with crackle glaze recess
\$200 – \$400
480. Rosemary Brittain, pair of unusually large modeled birds in with oxide wash over white slip, H. 200mm
\$500 – \$1000
Illustrated NZ Potters Blumhardt/Brake p.105, p111
481. Chester Nealie, kotiate form, ochre washed stoneware with pierced cruciform decoration, D. 160mm.
\$300 – \$600
Similar example illustrated NZ Potters Blumhardt/Brake p.58
482. Two Chester Nealie stoneware echnoderms
\$100 – \$200
483. Two stoneware pouring bowls in the manner of Len Castle
\$100 – \$200
484. Patti Meads sea form, David Brokenshire sea form and two other sea forms (4 items)
\$150 – \$250
485. Doreen Blumhardt, rock impressed abstract sculpture with red oatmeal panel to the front incised Doreen 1988, L. 470mm
\$800 – \$1200
- 485a. Rosemary Brittain, four hand-formed ceramic birds with pale ochre rubbed finish (4 items), L. 110mm each
\$200 – \$400
486. John Parker, fine stoneware conical bowl, D. 200mm
\$300 – \$500
487. New Zealand modernist stone sculpture, H. 259mm
\$150 – \$250
488. Theo Janssen Ruru owl stone sculpture
\$400 – \$600
489. Geoff Fairburn, gourd with incised Maori decoration, H. 860mm
\$100 – \$200
490. Charles Holmes, stoneware cylindrical vase with winged organic handle, H. 320 mm
\$300 – \$500
Similar examples illustrated NZ Craft by Blumhardt/Brake p.22
491. Charles Holmes sedge vase, H. 210mm
\$200 – \$400
492. Charles Holmes sedge vase, H. 210
\$200 – \$400
- 492a. Stoneware bottle vase, potter unknown, H.320mm
\$50 – \$100
493. Estelle Martin rectangular sculptural vase, W. 420mm
\$350 – \$700mm
494. Len Castle stoneware slab vase, firing flaw to base, H. 280mm
\$100 – \$200
495. Len Castle stoneware sedge vase, H. 170mm
\$200 – \$300
496. Len Castle, circular stoneware dish, D. 180mm
\$150 – \$250
497. Len Castle, bowl raised on a circular foot with a pale crackle glaze, D. 190mm
\$150 – \$250
498. Len Castle, stoneware dish with jun type glaze to the well on a tenmoku ground, W. 430mm
\$400 – \$800
499. Margaret Milne, stoneware vase of ovoid form with ochre and manganese wash decorated with an abstract design, c. 1972, H. 300mm
\$300 – \$500
500. Len Castle, sea secret with blue alkaline glazed interior, D. 245mm
\$350 – \$500

501. Chester Nealie, stoneware echnoderm , D. 130mm
\$150 – \$250
502. Rick Rudd, raku fired spiromorph, H. 230mm
\$350 – \$500
503. Rick Rudd, sculptural form teapot
\$400 – \$800
504. Rick Rudd, raku fired spherical form, D. 100mm
\$150 – \$250
505. Robyn Stewart, koru dung fired and burnished paperweight, D. 90mm
\$150 – \$250
506. Robyn Stewart, dung fired green glazed vase of Ko form
\$150 – \$250
507. Graeme Storm, stoneware bowl with Maori moko design
\$300 – \$500
508. Keith Richardson, hand turned fruit wood bowl, D. 200mm
\$80 – \$120
509. Anneke Borren, stoneware candleholder, H. 120mm
\$100 – \$200
510. Frank Hutchinson New Zealand art and crafts blue glazed paperweight modeled as two horses
\$100 – \$200
511. Peter Janssen, nine tiled panel decorated with an abstract female form, 460 x 460mm
\$300 – \$500
512. Fifty six ceramic tiles hand painted by Warren Tippet with a cube and geometric design. The tiles mounted together on particle board to form a complete work, signed and dated 1985 to the base. Some losses and damage. Overall size 1220 x 1060mm
\$500 – \$800
513. Paul Maysek, Lyall Drinkwater, stoneware cylindrical vase, H. 580mm
\$500 – \$1000
514. Daniel Steenstra for Crown Lynn, rare lamp base painted in black, teal and maroon bands together with a NZ made George Nelson designed shade
\$900 – \$1500
515. Ernst Shufflebotham for Crown Lynn, a good large hand potted vase with rare mint coloured glaze, shape 14, H. 240mm
\$1000 – \$2000
516. Ernest Shufflebotham for Crown Lynn, hand potted vase, matt white cylindrical shape with three lathe turned bands to the upper section, shape 3, H.180mm
\$300 – \$500
517. Ernest Shufflebotham for Crown Lynn, hand potted vase, matt white cylindrical shape with three lathe turned bands to the upper section, shape 3, H.130mm
\$150 – \$300
518. Ernest Shufflebotham for Crown Lynn, hand potted vase, matt white ovoid shape with lathe turning, shape 56, H.210mm
\$400 – \$600
519. Ernest Shufflebotham for Crown Lynn, hand potted bowl, matt white with lathe turning, D. 250mm
\$300 – \$400
520. Ernest Shufflebotham for Crown Lynn, hand potted vase, matt white with three lathe turned bands to the upper section, shape 5, H. 130mm
\$100 – \$200
521. Frank Carpay for Crown Lynn, bowl with hand painted design Werk cipher and number 781-7 to the base, D. 220mm
\$300 – \$400
522. Frank Carpay for Crown Lynn, vase painted in alternating green, black and red bands, painted Handwerk mark to the base, H. 190mm
\$1000 – \$1500
523. Frank Carpay for Crown Lynn, ovoid shaped vase painted with pale blue bands and abstracted spherical designs, painted Handwerk mark to the base, H. 220mm
\$2000 – \$2500
524. Frank Carpay for Crown Lynn, wall plate decorated in underglaze inky blue. Painted Werk and hand cipher to the base, D. 360mm
\$1400 – \$1800
525. Frank Carpay for Ambacht Volendam, lidded jam pot and single serve casserole
\$100 – \$200
526. Frank Carpay for Ambacht Volendam, float bowl together with a bowl and four small dishes (6 items)
\$100 – \$200
527. A pair of Crown Lynn Polar bear gloss white bookends with unusual blue highlights and painted faces. (Small hairline crack to one)
\$350 – \$500
528. A Titian Studios plate depicting the legend of Maui fishing up New Zealand, W. 260 mm
\$350 – \$500
529. A Crown Lynn Wharetana Maori chief wall plaque No. 1027, original Wharetana label fixed to the base, D. 240 mm
\$800 – \$1200
530. Dorothy Thorpe for Crown Lynn, two Santa Barbara pattern cups, three saucers and matching milk jug with ball handles
\$150 – \$250
531. Crown Lynn, group of five assorted small vases
\$50 – \$80
532. Crown Lynn, bowl with mottled brown and red glaze, a blue glazed vase together with four vases and a flower trough vase
\$200 – \$300
533. A Crown Lynn black glazed model of a Scottie dog, L. 120mm
\$40 – \$80
534. Titian Studio slipcast leaping Rainbow Trout ashtray, repaired, H. 190mm
\$40 – \$80
535. Titian studio slip cast seagull ashtray, H. 270mm
\$100 – \$200
536. Crown Lynn Kiwi (shape 165) together with a Crown Lynn shell (shape 631) and a brown glazed slip cast Kiwi (3 items)
\$50 – \$100
537. Dorothy Thorpe for Crown Lynn, 12 Monterrey cups
\$150 – \$250
538. Dorothy Thorpe for Crown Lynn, 56 piece dinner service in Pine pattern
\$400 – \$800
539. A pair of Crown Lynn Legend of Maui platters designed for Expo 70
\$400 – \$800
540. A rare New Zealand Temuka T.N. Lovatt designed lamp base decorated with Maori figures with sprinkled grey glaze, signed to the base (The only known example of this lamp base), W. 280mm
\$800 – \$1600
541. Michael Payne for Crown Lynn, Expo 70 six plates and two serving dishes
\$200 – \$300
542. A yellow McAlpine water jug, H. 210 mm
\$300 – \$500
543. A white McAlpine water jug
\$200 – \$300
544. New Zealand Railways four piece silver plated tea and coffee set
\$100 – \$200



New Zealand Furniture, Lighting and Associated items

545. John Middleditch, Abstract Female Form carved wood sculpture, H. 300mm \$600 – \$1200
Illustrated: Group Architects by Julia Gatley p. 134
546. **Garth Chester**, two side chairs plywood, with original upholstery \$800 – \$1200
547. **John Crichton**, standard lamp_with split bamboo shade, H. 1500mm \$600 – \$1200
548. John Crichton, black tubular steel standard lamp complete with original Crichton shade and telescopic stem, 1650 x2000mm (adjustable) \$750 – \$1200.
A similar example illustrated in 40 Legends of New Zealand design by Douglas Lloyd Jenkins. P.39 H. 640mm
549. John Crichton, floor standing uplighter, black tubular steel base with a cut out anodised metal shade, c. 1960, H. 1080mm \$500 – \$800
550. **John Crichton**, bowl, copper and tile, c. 1960, D.330mm \$600 – \$1200
Exhibited: AGCAG 1950s Show (1991-1992)
Illustrated: At Home and 40 Legends of Design
551. **John Crichton**, Birds painted wooden mahogany plywood panel, c. 1965 \$400 – \$600
552. John Crichton, turned lamp base in black paint over wood, c.1955, adhesive label to base \$200 – \$400
553. **John Crichton**, Rattan cane lamp base and woven fabric lampshade, c. 1950, together with another Malaysian period lampshade of earlier manufacture & another John Crichton lampshade \$400 – \$600
554. John Crichton, magazine rack \$100 – \$200
555. **John Crichton**, turned kauri salad bowl, c. 1955, adhesive sticker verso \$150 – \$250
556. New Zealand 1960's design, Noguchi inspired coffee table of triangulated shape manufactured by Maple Furnishings, W. 930mm \$500 – \$800
Retailled by Modernage Corner K Road and Symonds Street. Circa 1956.
557. John Crichton designed bowl decorated with a trailing mosaic pebble design, original label to the base, D. 190mm \$200 – \$300
558. An important and rare Garth Chester designed dining table with quadrangular top raised on four black tubular steel legs, complete with four matching bikini chairs. Inscription to the underside of three chairs: Designed and made by Garth Chester Ltd 32 France Street Auckland \$4000 – \$6000
A similar example illustrated At Home p.145
559. A rare pair of Jon Jansen 1950's armchairs designed by Bob Roukema in original upholstery \$1500 – \$2500
Edzer Duije Roukema (Bob Roukema) was employed in 1951 to run the first Jon Jansen store in Queen street Auckland. In addition to running the store Roukema designed much of the furniture which Jon Jansen produced between 1951-1959. Similar examples illustrated in the Auckland City Art Gallery 1950s Show souvenir edition: Modernism and the Auckland Design Community by Douglas Lloyd Jenkins p.56 and p.60
560. A rare Bob Roukema for Jon Janssen ply laminated armchair in superb condition with remains of original Jon Janssen label affixed to the base. Similar example illustrated At Home p.122 \$2000 – \$3000
561. A Jon Jansen 1950's armchair designed by Bob Roukema in original pink upholstery \$300 – \$500
562. 1960's New Zealand prodigy manufactured angle poise lamp \$100 – \$200
563. Anolux spun aluminum fruit bowl, D. 360mm \$100 – \$200
564. Jon Janssen rectangular 1950's teak coffee table raised on tapering legs, L. 1200mm \$200 – \$300
565. A pair of rare John Crichton designed anodized spun aluminum blue and red wall lights \$500 – \$800
567. A 1950's New Zealand black steel modernist coffee table with magazine rack to the base, W. 460mm \$240 – \$400
568. New Zealand made coffee table with white painted tubular steel base and inset circular glass top possibly by Garth Chester, D. 620mm \$350 – \$500
569. Pair of Garth Chester bar stools. Manufactured at 32 France Street, Auckland \$500 – \$800
570. A set of three 1950's New Zealand made patio chairs raised on black steel bases \$600 – \$900
Illustrated in Group Architects by J Gatley P.134
571. A New Zealand made 1960's four panelled room divider screen with ebonised wood frame, H. 1440mm \$400 – \$800
572. **Garth Chester**, Astoria chair in plywood with later Sanderson style upholstery \$500 – \$1000
573. Garth Chester, Astoria chair with original upholstery, c. 1954 \$500 – \$1000
574. A rare pair of Garth Chester design Salon chairs designed for Kay's and Winter's Beauty Salons. Each complete with original detachable hair driers, c.1956 \$1000 – \$2000
Similar examples illustrated in the Auckland City Art Gallery 1950s Show souvenir edition p.61
575. A 1950's oak triangulated modernistic coffee table raised on three triangulated legs, L. 1270mm \$400 – \$600
576. A John Crichton design coffee table with a mosaic pebble top and raised on a square black metal frame, c. 1960, W. 760mm \$400 – \$800
577. A pair of John Crichton design butterfly chairs with painted triangulated steel frames and original sling covers \$500 – \$1000
Similar examples illustrated on the front cover of At Home.
578. A John Crichton design butterfly chair with painted triangulated steel frame and original sling cover \$200 – \$400



545

583

548



579. A New Zealand manufactured modernist armchair, chromium plated tubular steel frame with bakelite arms and upholstered in chocolate brown leather, c. 1940
\$500 – \$800
580. A pair of 1950's woven cane armchairs in matched original condition
\$350 – \$500
Manufactured at the Blind Institute in Parnell.
581. A John Crichton designed coffee table with a mosaic pebble top raised on a black steel base, c. 1960, W. 1270 mm
\$800 – \$1500
582. A John Crichton designed wrought iron standard lamp with matt black finish with original fabric shade, in good original condition, H. 1600mm
\$1400-2000
An identical example is illustrated on a John Crichton information sheet from the 1950s. The information sheet reproduced in At Home by Douglas Lloyd Jenkins p.142
583. A New Zealand 1950's standard lamp attributed to John Crichton with white painted finish. The lower section with mosaic inlaid tray and with later George Nelson designed shade, H. 1340mm
\$1000 – \$1500
584. A pair of John Hughes designed art deco revival chairs, each with metal frame and leather sling upholstery
\$1000 – \$1500
Originally exhibited in the Modern furniture exhibition in Christchurch at the CSA Gallery in 1971. Identical examples illustrated in At Home p.240
585. A 1950's New Zealand Maples Furnishings Ltd oak sideboard with sliding glass panels, small drawers and cupboard, W. 1220 H. 830mm
\$400 – \$800
Retailled by Modernage corner K Road and Symonds Street. Circa 1956
586. A N.Z. made vintage 1960's swivel chair with chromium plated framing and tubular steel arms raised on a conical base (recently rechromed and reupholstered in red leather)
\$500 – \$800
587. A New Zealand 1940's Centennial Exhibition stone mantle clock inscribed Tempus Fugit 1940, the base inscribed with the artist's initials P.A
\$500 – \$800
588. A New Zealand handmade scale model of a tin plate tram car with destination blind inscribed, Herne Bay via College Hill, W. 630mm
\$500 – \$800
589. A pair of NZ designed art deco Centennial exhibition bookends
\$200 – \$300
590. Jane Brenkley sewing box the exterior carved with deer and coastal scenes, the interior inscribed 'Fragrant with Happy Thoughts' dated 1952
\$400 – \$600
591. A pair of 1960's tubular steel chairs with sheepskin covers
\$200 – \$400
592. NZ 1950's white painted metal side table with glass top, L. 620 mm
\$200 – \$400
593. A Christchurch Press company Railways Advertising Studio vintage K.P Life Salts poster. Inscribed Better to miss your train than your K.P Life Salt. Effervescent, refreshing, cooling and health restoring., 1000 x 740mm
\$1800 – \$2600
594. New Zealand vintage poster, 'Sail Matson', 700 x 480mm
\$700 – \$1100
595. A New Zealand made Art Deco period single bed fitted with a later futon base
\$350 – \$500
596. A 1950's Hamilton Beach chromium drinks master in good original working condition
\$250 – \$350
597. New Zealand black plaster lamp cast with Maori figures and kowhaiwhai shade, H. 680mm
\$250 – \$500
598. A pair of oak modernist side tables with circular tops raised on tapering legs
\$400 – \$600
599. A Sovereign ware New Zealand native timber platter raised on three ball feet, c. 1965, D. 370mm
\$75 – \$125
600. Four New Zealand Arts Year Books, Nos. 2, 3, 4 & 6
\$100 – \$200
601. A pair of 1950's New Zealand made stools raised on tubular steel supports with sheepskin covers
\$200 – \$400
602. A New Zealand folk art Maori figural lamp, H. 540mm
\$350 – \$500
603. A rare 'Maori Legend' design Tattersfield all wool pile rug decorated with kowhaiwhai designs and tukutuku panel designs, with original label, 1420 x 690 mm
\$1000 – \$2000
604. A rare 'Maori Legend' design, Tattersfield all wool pile rug decorated with taniko design, with original label, 1360 x 690mm
\$1000 – \$2000
605. A vintage Don Ramage Rya wool rug, 1700 x 1200mm
\$400 – \$800
Exhibited Don Ramage Hawke's Bay Museum exhibition
606. A vintage NZ made modernist hand-woven wool floor rug by Jean Ngan, 2000 x 860mm
\$500 – \$1000
607. A large 1960s floor rug decorated with a sunburst pattern in yellow, brown orange and red, 2700 x 3000mm approx.
\$450 – \$650
608. West End Girl Guides Blanket with numerous hand-stitched badges, 1800 x 1100mm
\$200 – \$300
609. Vivienne Mountford Kauri Trees Coromandel Peninsula three woven circular tapestry panels mounted on board
title inscribed, signed and dated verso
H. 1840 mm
\$1000 – \$1500
610. Frank Carpay designed 1960s, Kendall shirt
\$100 – \$150
611. A 1950's 'Four Square' Assistants award with silver plated cube supported on four small Bakelite cubes, inscribed Co-operation, Integrity, Service, Fraternity, dated 1954, H. 150mm
\$150 – \$250
612. Wiremu Kutuheri, mantle clock carved as a log surmounted by two kiwis, H. 330mm
\$400 – \$600
613. Rex Chapman-Taylor, hand adzed rimu dining table and six chairs
\$800 – \$1200
614. Rex Chapman-Taylor dresser, the upper section with two shelves, the lower section with two drawers above paneled cupboards, W. 1170mm
\$800 – \$1200
615. A New Zealand colonial games table, the top inlaid in rimu, kauri, rewarewa and numerous native timbers, W. 560mm
\$450 – \$800
616. David Trubridge Prototype Ruth Rocker – 2 Chair & matching Flip for Ruth Ottoman hoop pine, plywood and ash
artist's impressed signature stamp to underside (signaling first version)
\$2000 – \$3500
617. Humphrey Ikin
Untitled wooden chair
\$1000 – \$1500
618. Tony Lane gilt wood mirror, designed for Metropole Lounge Bar, Parnell painted on applied disks with splayed branch design, 940 x 1200mm
\$800 – \$1500
619. A New Zealand made sterling silver locket brooch decorated with a Maori Chiefs head
\$300 – \$350
620. Pounamu and 9ct gold bar brooch with NZ and fern motif, in box
\$100 – \$200
621. Valiant comic famous fighter series entitled The Maoris, dated 11th April, 1964
\$50 – \$100
622. A pair of hand blown art glass bowls
\$200 – \$300



617

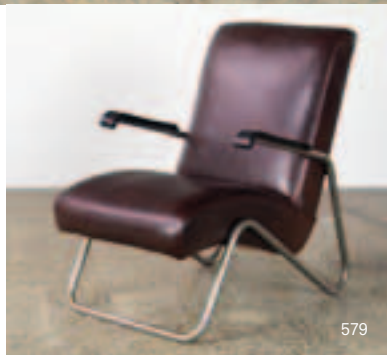
616



582



584



579



609



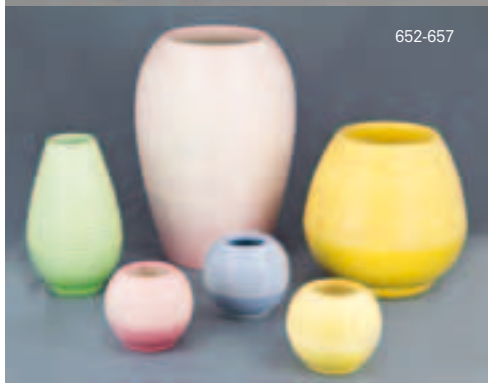
594

Decorative Arts of the Modern Movement

623. An Arne Jacobson designed stainless steel cylinder line ice bucket, H. 250mm
\$200 – \$300
- 624. Wedgwood** Bournvita set of Jug and three cups, c. 1935
\$50 – \$100
- 625. Keith Murray for Wedgwood**, shoulder vase in matt white, 300 x 200mm
\$1400 – \$1800
- 626. Keith Murray for Wedgwood**, lidded bath salts jar, green glazed earthenware, c. 1930 (rim frit)
\$200 – \$400
- 627. Keith Murray for Wedgwood**, cider jug
\$100 – \$200
- 628. Keith Murray for Wedgwood**, cider jug
\$100 – \$200
- 629. Keith Murray for Wedgwood**, commemorative cider mug
\$50 – \$100
630. Keith Murray for Wedgwood, spherical lathe turned vase in straw, KM printed mark, H. 160mm
\$400 – \$500
631. Keith Murray for Wedgwood, ovoid lathe turned moonstone vase, Keith Murray facsimile mark, H. 150mm
\$350 – \$500
632. Keith Murray for Wedgwood, matt white vase with vertical ribbing, KM printed mark, H. 190mm
\$100 – \$200
633. Keith Murray for Wedgwood, vase with matt blue glaze, H. 190mm
\$1200 – \$1600
634. Keith Murray for Wedgwood, facetted bowl, black basalt, D. 260mm
\$1 000 – \$1500
635. Keith Murray for Wedgwood, two tone slip vase, celadon glaze, H. 190mm
\$350 – \$500
636. Keith Murray for Wedgwood, cylindrical vase, matt blue glaze, H. 160mm
\$1000 – \$1400
637. Keith Murray for Wedgwood, ridge vase, matt straw glaze (small glaze frit to rim) H. 190mm
\$400 – \$600
638. Keith Murray for Wedgwood, stepped bowl, moonstone glaze, D. 185mm
\$400 – \$600
639. Keith Murray for Wedgwood, shoulder vase, moonstone glaze, D. 270mm
\$1000 – \$1500
640. Keith Murray for Wedgwood, ridge vase, moonstone glaze, H. 230mm
\$800 – \$1 200
641. Keith Murray for Wedgwood, matt green shallow bowl (Some crazing and staining to the interior) D. 260 mm
\$400 – \$600
642. Poole Delphis charger, D. 345mm
\$400 – \$600
643. Poole Pottery vase with hand painted decoration in yellow and blue, trailing leaf pattern, H. 180mm
\$350 – \$500
644. A pair of Poole pottery vases each with daubed green glaze and dove form handles, H. 210mm
\$400 – \$600
645. A Poole free form planter decorated in the vertical leaf pattern by Alfred Read, H. 180mm
\$200 – \$300
646. A Poole free form vase ovoid shape 337 Stars pattern by Ruth Pavely 1956-57
\$200 – \$300
- 647. Rye Pottery**, England bowl with blue stripes and a Scandinavian vase with green and black vertical lines, c. 1950
\$50 – \$100
- 648. St Ives Pottery**, England, assorted pieces including: three lidded casserole pots, one coffee pot, one lidded cooking pot with handle, six soup bowls and three ramekins (one lidded)
\$400 – \$800
- 649. Pair of Scandinavian style modern teak candle sticks**
\$60 – \$120
650. A yellow monochrome bottle vase, crazed and with rim frit, H. 150mm
\$40 – \$80
651. A Carltonware dragon pattern vase. The cylindrical vase decorated with a dragon and cloud pattern within a black cartouche to the front and reverse on a deep red ground with scattered auspicious Buddhist motifs including an endless knot and Dharma chakra wheel, the upper section with a floral and gilt pattern, Wiltshaw and Robinson factory stamp, Pattern number 3145, c. 1927, H. 260mm
\$1000 – \$1500
652. A Carltonware engine turned vase of ovoid shape with gloss pink glaze (No. 3977) H. 230mm
\$150 – \$250
653. A Carltonware engine turned vase of tapering cylindrical form, gloss pink glaze (No. 3977) H. 210mm
\$150 – \$200
654. A Carltonware engine turned vase of ovoid form with matt yellow glaze (No. 3980) H. 170mm
\$175 – \$225
655. A Carltonware engine turned vase of ovoid shape with matt green glaze (No. 3979) H. 150mm
\$50 – \$100
656. A Carltonware engine turned vase of ovoid shape with gloss pink glaze (No. 3977) H. 115mm
\$40 – \$80
657. Three Carltonware engine turned vases of small spherical shape in gloss pink, matt blue and matt yellow, H. 70mm
\$200 – \$300
658. Poole pottery plate, matt white with hand painted floral motif, D. 325mm
\$100 – \$200
659. Tudric pewter Archibald Knox designed lidded pewter biscuit box decorated with a stylised leaf and flower design, H. 130mm
\$800 – \$1200

Clarice Cliff

660. Clarice Cliff, vase of castellated shape decorated in the Secrets pattern, H. 200mm
\$800 – \$1400
661. 'Blue Chintz', a Clarice Cliff conical sugar shaker, factory marks 'Handpainted Bizarre by Clarice Cliff', c. 1932, H. 140mm
\$1200 – \$1500
662. 'Rhodanthe', a Clarice Cliff conical sugar shaker, factory marks 'Handpainted Bizarre by Clarice Cliff', c. 1934, H. 140mm
\$800 – \$1200
663. 'Rhodanthe', a Clarice Cliff conical salt & pepper, unmarked, c. 1934, H. 80mm
\$300 – \$500
664. 'Blue Chintz', a Clarice Cliff sabot, factory marks 'Handpainted Bizarre by Clarice Cliff', c. 1932, H. 110mm
\$800 – \$1200
665. 'Pastel Melons', a Clarice Cliff sabot, factory marks 'Handpainted Bizarre by Clarice Cliff', c. 1930, H. 110mm
\$800 – \$1200
666. 'Original Bizarre', a Clarice Cliff shape 269 vase painted in geometric diamonds, factory marks 'Handpainted Bizarre by Clarice Cliff', c. 1929, H. 150mm
\$1200 – \$1500
667. 'Kew' Clarice Cliff coffee can & saucer, painted with a red pagoda between stylised trees, factory marks 'Handpainted Bizarre by Clarice Cliff', c. 1932
\$800 – \$1200
668. 'Lilly' Clarice Cliff octagonal plate painted with an abstract waterlily inside orange & blue banding. factory marks 'Handpainted Fantasque by Clarice Cliff', c. 1929, D. 150mm
\$700 – \$1000
669. 'Garland' Clarice Cliff octagonal plate painted with a geometric flower pattern inside orange banding, factory marks 'Handpainted Fantasque by Clarice Cliff', c. 1929, D. 150mm
\$700 – \$1000
- 669a. A collection of Clarice Cliff reference material including 'The Bizarre Affair' and Christies catalogues
\$50 – \$100



Moorcroft Pottery

670. Moorcroft Pansy pattern bowl (marks for 1920-1928) D. 215mm
\$800 – \$1200
671. Moorcroft Pomegranate bowl with silver plated rim (marks for 1920-1928) D. 184mm
\$1200 – \$1500
672. Large Moorcroft Pomegranate bowl (1920-1928) D. 243mm
\$500 – \$800
673. Moorcroft Pomegranate baluster shaped vase, green W. Moorcroft signature, H. 145mm
\$200 – \$300
674. Moorcroft Pomegranate comport on a silver plated stand, firing flaw, H. 153mm
\$100 – \$200
675. A large and impressive Moorcroft ovoid pomegranate vase, green W. Moorcroft signature, (Marks for 1920-1928) H. 200mm
\$1200 – \$1800
676. Moorcroft clematis pattern lamp base together with an original parchment shade with clematis pattern (1953-78) H. 170mm (without shade)
\$350–600
677. A rare Moorcroft flambé trial vase in wattle pattern, initialed WM (manufactured 1986-89) H. 305 mm
\$500 – \$800
678. A large and impressive Moorcroft baluster vase in orchid pattern, c.1930, H. 330mm
\$4000 – \$5000
679. Moorcroft, table lamp in orchid pattern with an original parchment shade with orchid pattern (Marks for 1926-28)
\$400 – \$800
680. Moorcroft, spill vase in wisteria pattern, green initials (1920-28) H. 150mm
\$800 – \$1400
681. Moorcroft, baluster vase in wisteria pattern green signature (1926-28) H. 195mm
\$1500 – \$2000
682. Moorcroft, peach lustre ware vase, H. 135 mm and a Moorcroft apricot lustre ware sugar pot with plated lid (1914-1916) H. 70 mm & a Moorcroft 1998 trial salmon bud vase, H. 130mm
\$200 – \$300
683. Moorcroft, baluster vase in anemone pattern, c. 1955, H. 150mm
\$200 – \$300
684. Small Moorcroft baluster vase in orchid pattern (1926-28) H. 85mm
\$100 – \$200
685. Moorcroft, bulbous vase in columbine pattern, c. 1950, H. 100mm
\$150 – \$250
686. A rare Moorcroft vase, plumbs pattern (1920-1928) H. 85mm
\$750 – \$1000
687. Moorcroft, spill vase, moonlit blue pattern (Marks for 1920-192) H. 150mm
\$2000 – \$2500
688. Moorcroft, dish in dark blue/green lustre, small chip to the base, D. 95mm
\$40 – \$80
689. Moorcroft, spill vase in pomegranate pattern with a Tudric pewter base (1920-1925) hairline crack, H. 165mm
\$1200 – \$1500
690. Moorcroft, vase in pomegranate pattern with Tudric pewter handles and top rim (1920-1928) H. 155mm
\$1000 – \$1500
691. Moorcroft comport in pomegranate pattern with Tudric pewter base (1920-1928) H. 200mm
\$1000 – \$1500
692. Moorcroft, spherical vase in leaf and berry patter (1928-1936) H. 105mm
\$200 – \$400
693. Moorcroft, small footed bowl in anemone pattern, c. 1950, D. 80mm
\$100 – \$200
694. Moorcroft, small footed bowl in orchid pattern (1926-1928) D. 80mm
\$100 – \$200
695. Moorcroft, bowl in orchid pattern (1926-1928) D. 105mm
\$100 – \$200
696. Moorcroft, bowl in leaf and berry pattern(1926-1928) D. 110mm
\$200 – \$300
697. Moorcroft, purple and pink lustre footed bowl (1918-1920) & Six small Moorcroft purple and pink lustre saki bowls (manufactured 1920-1925)]
\$150 – \$250
698. Moorcroft lidded jar in orchid pattern (1926-1928) & Moorcroft lidded jar in flowers spring pattern (1953-1978), H. 90mm each
\$250 – \$350
698. Small Moorcroft baluster vase in orchid pattern (1926-1928) H. 95mm
\$100 – \$200
699. Small Moorcroft baluster vase in leaf and berries pattern (1926-1928) H. 90mm
\$100 – \$200
700. Macintyre Queen Victoria 60th Jubilee Commemorative cup and saucer dated 1823-1897, H. 53mm
\$40 – \$80
701. Moorcroft advertising plaque, c. 1980, L. 205 W. 90mm
\$50 – \$100
702. An unusual Moorcroft cabinet plate with Yacht decoration, D. 235 (small chip to back)
\$40 – \$80
703. Moorcroft bulbous vase in pansy pattern (1928-1936) H. 135mm
\$150 – \$250
705. Small Moorcroft inverse baluster vase in pansy pattern (1920 -1928) H. 100mm
\$150 – \$250
706. Small Moorcroft dish in pansy pattern (1920-1928) D. 90mm
\$100 – \$200
707. Moorcroft vase in pansy pattern (1920-1928) H. 110mm
\$200 – \$400
708. Moorcroft, bulbous vase in pansy pattern (1920-1928) H. 130mm
\$200 – \$400
709. Moorcroft, Aurelian tobacco jar in forget-me-not pattern, c. 1910
\$1500 – \$2000
710. Moorcroft, green lustre shoulder vase with a green lustre bowl vase and a dark green baluster vase, H. 100mm & 110mm & 170mm
\$200 – \$400
711. Moorcroft ,yellow lustre inverse baluster vase (1916-1918) H. 190mm
\$150 – \$250
712. Moorcroft, green lustre bowl vase (manufactured 1914-1916), H. 145mm
\$150 – \$250
713. Moorcroft, orange lustre pepper pot and mustard pot (1918-1920)
\$80 – \$140
714. Moorcroft, green and white jam bowl, 2 sets of cream eggcup, salt and pepper shakers and 2 white acorn pepper pots together with a cream lustre ware dish
\$150 – \$250
715. Pair of Moorcroft candlesticks in anemone pattern, H. 90mm
\$200 – \$400
716. A rare Moorcroft squat vase in blue pansy pattern (1920-1928) H. 850mm
\$1200 – \$1500
717. Three small Moorcroft dishes in anemone, columbine and freesia patterns, D. 75mm & 95mm & 75mm
\$150 – \$250
718. Three piece Moorcroft pomegranate teaset with teapot, cream and sugar all with Tudric pewter mounts (1920–1925), repair to teapot
\$2500 – \$3500
719. Moorcroft, bulbous vase in anemone pattern (1936-1945)
\$150 – \$250
720. Moorcroft, baluster vase in orchid pattern (1926-1928) H. 105mm
\$150 – \$250
721. Moorcroft, small bowl in pomegranate pattern (1920-1925) H. 70mm
\$200 – \$300
722. Moorcroft, idded jar in hibiscus pattern (1978-1981) H. 90mm
\$100 – \$200



723. Moorcroft, flambé inverse baluster shape vase in freesia pattern, chip to rim, c. 1935, H. 110mm
\$80 – \$120
724. Moorcroft, bud vase in orchid pattern (1920-1928) H. 165mm
\$900 – \$1400
725. Moorcroft, orange lustre squat vase (1914-1916) H. 100mm
\$100 – \$200
726. Macintyre, Aurelian ware shoulder vase in cobalt, c. 1900, H. 305mm
\$1500 – \$2000
727. Moorcroft, ginger jar in plums pattern, c. 1925, H. 150mm
\$1200 – \$1600
728. Moorcroft, green lustre bottle vase (1920-1925) H. 210mm
\$100 – \$200
729. Small Moorcroft orange lustre bottle vase and an orange lustre lidded bowl, H. 95mm & H. 80mm
\$100 – \$200
730. Macintyre, Aurelian ware ships vase period, c. 1900, H. 200mm
\$900 – \$1200
731. Moorcroft, vase in anemone pattern and a Moorcroft powder bowl in anemone pattern, H. 80mm & L. 130mm
\$200 – \$300
732. Moorcroft, shoulder vase in anemone pattern (1928-1936) H. 110mm
\$150 – \$250
733. Moorcroft, baluster vase in orchid pattern (1926-1928) Small Moorcroft pin dish in bougainvillea pattern (1953-1978) H. 95mm & D. 80mm
\$200 – \$300
734. Moorcroft, bulbous vase in green pomegranate pattern (1920-1925) H. 90mm
\$150 – \$250
735. Moorcroft, demitasse cup and saucer in leaf and berry pattern, c. 1928, H. 108mm
\$200 – \$400
736. 3 small Moorcroft lustre ware bowls circa 1915-1918, experimental pots bought directly from Moorcroft during a 'cellar' sale
\$200 – \$400
737. 2 rare Moorcroft demitasse cups and saucer in toadstool pattern and a tea plate in toadstool pattern (1928-1936)
\$1500 – \$2000
738. Moorcroft powder blue cake plate, lidded hot water jug, sugar bowl and cup, saucer and plate (6 items)
\$100 – \$200
739. Moorcroft powder blue coffee pot (small chip), sugar bowl with silver plated lid, six coffee cans and saucers, six small side plates.
\$150 – \$250
740. Moorcroft powder blue teapot and teapot trivet
\$100 – \$150
741. Moorcroft powder blue toast rack and 3 powder blue and one white salt and peppers.
\$100 – \$200
742. Moorcroft powder blue milk jug and sugar bowl (2 items)
\$40 – \$80
743. Moorcroft powder blue set of six egg cups and a salt shaker (7 items)
\$40 – \$80
744. Two Moorcroft powder blue blue/white acorn salts and 3 egg cups (5 items)
\$40 – \$80
745. Moorcroft powder blue set of 8 tea cups and saucers and 4 small side plates
\$80 – \$120
746. Two Moorcroft powder blue/ white acorn salts, a green/white and a pink/white acorn salt, mustard pot lacking lid and a small white salt and sugar bowl with silver plated lid (7 items)
\$150 – \$250
747. Two Moorcroft powder blue three piece cruet sets
\$100 – \$200
748. Beswick, Fern Bank pattern vase with an unusual teal glaze, H. 300mm
\$200 – \$400
- 748a. Martin Brothers, double faced jug decorated with two grimacing faces on a mottled brown and ecru ground. Incised to the base Martin brothers, London and Southall and dated 3. 1901, H. 160mm
\$4500 – \$6500
749. Bernard Moore, lustre bottle vase decorated with a peacock on a rich red ground printed mark to the base, H. 240mm
\$600 – \$1200
750. An Art Nouveau period iridescent glass vase with applied pierced silver plated top, attributed to Loetz
\$150 – \$250
751. An Art Nouveau period iridescent glass bowl, D. 150mm
\$250 – \$350
752. An Art Nouveau period iridescent glass bowl, D. 140mm
\$250 – \$350
753. An Art Nouveau period Loetz (unsigned) iridescent green glass vase of bottle shape decorated with textured creases to the surface, small frits to the top rim, c. 1900, H. 250mm
\$500 – \$800
754. A late 19th century aesthetic style cased glass vase hand painted in gilt with butterfly and floral decoration, H. 200mm
\$100 – \$200
755. A Moser green glass vase, the upper section encircled with a gilt band depicting classical warrior maiden figures, etched marks to the base
\$200 – \$400



756. Marcel Breuer

B35 armchair (1928–29) manufactured by Gebrüder Thonet, tubular steel, wood, and canvas. Thonet label to underside.
\$600 – \$1200

757. Charles and Ray Eames for Herman Miller Lounger and Ottoman models 670 and 671 with rosewood laminate shell with black leather cushions raised on a cast aluminum base, Herman Miller label to the underside of each piece.
\$4000 – \$8000

758. Charles and Ray Eames for Herman Miller couch with black leather cushions raised on a cast aluminum base, W. 1400mm
\$4000 – \$6000

759. A Ralph Lauren armchair with rolled arms in chocolate brown and black leather upholstery, Ralph Lauren label to underside of the seat
\$1000 – \$2000

760. A three piece 1950s Danish teak framed lounge suite
\$1400 – \$1800

761. An original Eileen Grey daybed in leather and chromium-plated steel designed in 1925 This example manufactured by Classic Con, c.2003
\$3000 – \$5000

762. An Eames aluminum group office chair with blue leather pad seat
\$600 – \$1200

762a. Two Italian modular foam armchairs (c.1970). Purchased Focus Furniture in 1970's. Original fabric coverings.
\$500 – \$1000

763. A good English Satin birch coffee table and two side tables configured as a nest with the two smaller tables sliding beneath the larger table, each of rectangular form and raised on a chromium plated base, attrib. to Merrow Associates, 1000 x 1200 mm
\$1000 – \$2000

764. A pair of Asprey leather bookends each with a laminated wood golf club and brass ball modeled in high relief, H. 180mm
\$100 – \$200

765. An Art Deco period chromium plated photo frame made in the form of an open hoop, H. 209mm
\$100 – \$250

766. A Ralph Lauren designed chaise longue upholstered in a brown leather basket weave pattern, raised on a chromium plated base
\$2000 – \$3000



767. A pair of 1950's laminated bookends with terrestrial and celestial globes Manufactured by Columbus
\$500 – \$1000
768. Jasper Conrad for OMK design chromium plated wall mirror
\$400 – \$800
769. A red carbon fibre Ferrari humidor with camphor lined interior and removable tray, 400 x 280mm
\$500 – \$800
770. A Murano coloured and clear glass cased candlestick by L. Mellara, signature to the base, H. 500mm
\$300 – \$500
771. An Italian Murano yellow tinted glass vase raised on chromium plated base, H. 470mm
\$350 – \$500
772. A pair of Italian Murano glass male and female torsos, multi coloured in clear glass casing raised on circular black vitrolite bases by R. Auatza, H. 360mm
\$600 – \$1200
773. A set of Gucci chromium plated fire irons on stand and matching wood box
\$400 – \$800
774. A large decorative contemporary English pottery four sided jug painted with arum lilies, and pomegranates with alternate panels of naked figures, H. 540mm
\$400 – \$800
775. A large and impressive German Zertifikat manufactured C.D. tower modeled as a scale model of the Empire state building constructed from more than 100 sheets of metal and raised on an American maple wood base, complete with original certificate of authenticity dated 2000
\$1000 – \$2000
776. A Knoll boardroom table, the two section table with rosewood top with additional leaf W.800mm. Probably made under license in New Zealand in the 1980s. The Table originally used as the Boardroom table at NZI, 3800 x 1500mm & centre leaf of 800mm
\$3500 – \$5000
777. A pair of vintage Wim Rietveld designed pyramid chairs
\$600 – \$1000
778. A French Art Deco lamp by Augustine Carvin with a seal cast in copper in high relief, the glass shade made in the form of an iceberg raised on a spelter base, impressed Fabrication Francasie mark, L. 240mm
\$800 – \$1200
779. Luigi I ceiling mounted light by Triade, Borek Sipek designer, six interleaved glass lamps with five 'leaves', D. 1500mm x H. 2000mm
\$4000 – \$6000
780. Robin Day for Hille three seater reception chair with wool upholstered seats
\$400 – \$600
781. A two seater couch upholstered in ecru wool upholstery
\$400 – \$800
782. A large cushion the surface embellished with small rectangular mother of pearl discs, 540 x 540mm
\$50 – \$100
783. 1960's hanging glass lamp shade
\$100 – \$200
784. An Art Deco mohair rug by Ontram and Peels, plush honey gold pile, 1900 x 950mm
\$400 – \$800
- 784a. An Art Deco period spelter lamp
\$250 – \$500
- 784b. An Art Deco period figural plaster lamp
\$150 – \$250
- 784c. An Art Nouveau period painted earthenware figural mirror modelled as a young woman standing by a rocky pool with grotesque mask beneath an arched mirror
\$350 – \$500
785. A Joe Colombo designed 1960's space age plastic desk lamp
\$250 – \$350
786. A Louis Poulsen designed 1960's space age plastic desk lamp
\$250 – \$350
787. A large 1960's orange plastic shelving unit purchased from Smith and Caughey's in the late 1960's
\$800 – \$1200
788. Joe Colombo 1960's silver and plastic space age lamp
\$300 – \$400
789. 1960's plastic cosmetic mirror
\$200 – \$400
790. A 1960's New Zealand made purple and white plastic table lamp made by CB Incorporated
\$250 – \$400
791. A plastic table lamp with fluted shade
\$200 – \$300
792. A 1960s space age plastic coat rack
\$150 – \$250
793. A pair of New Zealand made 1960s 'phases of the moon' yellow plastic table lamps
\$400 – \$800
794. A Louis Poulsen spun aluminum blue vintage ceiling light Model ph5
\$800 – \$1200
795. A Louis Poulsen spun aluminum purple vintage ceiling light Model ph5
\$800 – \$1200
796. A pair of Ero Saarinen style side tables
\$400 – \$800
797. An art deco Christian Barman designed HMV chrome beehive heater in superb original condition
\$500 – \$800
798. 1950s Sofono electric disc heater
\$400 – \$600
799. A 1950's conical wooden planter supported on three black metal rods, H. 670mm
\$400 – \$600
800. Vico Magistretti for Artemide vintage molded plastic coffee table
\$400 – \$800
801. Antonio Citterio for Kartell Battista table trolley, c. 1970s
\$250-350

Motorbikes

802. A Red 1950s Matchless single trail bike, 500cc
\$3500 – \$5000
803. A Black 1950s Matchless road bike, 350cc
\$2500 – \$3500



775



776



767



802



774



772



769

Decorative Arts



809



807

808



811



815

804. A 19th Century painted gesso crucifix of Jesus mounted on a later cross, the figure with damage to one hand, the other hand missing, H. 430mm
\$350 – \$400
805. Two 18th Century Delft blue and white tiles, one with a crucifixion scene and the other with figures at a well, 125 x 125mm each
\$100 – \$200
806. A 19th century Russian icon painted with a figure of the Virgin Mary with gilt highlights, 280 x 360mm
\$600 – \$1000
807. A good early Victorian Copeland and Garrett Parian ware figure of Narcissus modeled by Gibson (R.A.) for the Art Union of London, dated 1846 with original printed stamp to the interior, H. 310mm
\$1000 – \$1500
808. A good early Victorian Copeland Parian ware figure of Musidora modelled by W. Teed for the Crystal Palace Art Exhibition (1851), impressed stamps, H. 420mm
\$1500 – \$2000
809. A Dresden 19th Century lidded vase, hand painted with scenes of a harbour side town with alternating panels painted in a pink diaper pattern, possibly by Johann Christen Dahl, H. 240mm
\$500 – \$1000
810. A French Napoleon III period mantle clock by Henri Picard, the gilt bronze case surmounted by a figure of Hope. The white enamel dial with Roman numerals flanked by recessed marble panels, c. 1860, W. 450mm x H. 380mm
\$1000 – \$2000
811. An impressive early 18th Century French oak armoire with a stepped cornice above paneled doors with marquetry inlay raised on flat bun feet, 2100 x 1360mm
\$5000 – \$8000
812. A set of ten 19th century French provincial country chairs with seagrass seats
\$800 – \$1200
813. A 19th century French gilt over mantle mirror, 1560 x 1040mm
\$800 – \$1200
814. A pair of French Boudoir chairs
\$1200 – \$1800
815. A 19th century French wood and gesso painted figure of Saint Germaine, H. 1600mm
\$4000 – \$5000
816. A decoratively painted Italian cabinet
\$1000 – \$1500
817. A French Baques six Light chandelier
\$3000 – \$4000
818. A decorative wrought iron white painted chandelier
\$350 – \$500
819. A French luster chandelier
\$1500 – \$2500
820. A Victorian mother of pearl inlaid side chair
\$80 – \$120
821. A late 19th century oak elbow chair
\$80 – \$120
822. A Louis XV style fauteuil
\$400 – \$600
823. A taxidermy Deer's head mounted on an ebonised wall bracket
\$100 – \$200
824. Art Deco figural float bowl
\$150 – \$250

Conditions of sale

Please note: it is assumed that all bidders at auction have read and agreed to the conditions described on this page.
ART+OBJECT directors are available during the auction viewing to clarify any questions you may have.

1.

Registration: Only registered bidders may bid at auction. You are required to complete a bidding card or absentee bidding form prior to the auction giving your correct name, address and telephone contact + supplementary information such as email addresses that you may wish to supply to ART+OBJECT

2.

Bidding: The highest bidder will be the purchaser subject to the auctioneer accepting the winning bid and any vendor's reserve having been reached. The auctioneer has the right to refuse any bid. If this takes place or in the event of a dispute the auctioneer may call for bids at the previous lowest bid and proceed from this point. Bids advance at sums decreed by the auctioneer unless signaled otherwise by the auctioneer. No bids may be retracted. The auctioneer retains the right to bid on behalf of the vendor up to the reserve figure.

3.

Reserve: Lots are offered and sold subject to the vendor's reserve price being met.

4.

Lots offered and sold as described and viewed: ART+OBJECT makes all attempts to accurately describe and catalogue lots offered for sale. Notwithstanding this neither the vendor nor ART+OBJECT accepts any liability for errors of description or faults and imperfections whether described in writing or verbally. This applies to questions of authenticity and quality of the item. Buyers are deemed to have inspected the item thoroughly and proceed on their own judgment. The act of bidding is agreed by the buyer to be an indication that they are satisfied on all counts regarding condition and authenticity.

5.

Buyers premium: The purchaser by bidding acknowledges their acceptance of a buyers premium of 15% + GST on the premium to be added to the hammer price in the event of a successful sale at auction.

6.

ART+OBJECT is an agent for a vendor: A+O has the right to conduct the sale of an item on behalf of a vendor. This may include withdrawing an item from sale for any reason.

7.

Payment: Successful bidders are required to make full payment immediately post sale – being either the day of the sale or the following day. If for any reason payment is delayed then a 20% deposit is required immediately and the balance to 100% required within 3 working days of the sale date. Payment can be made by Eftpos, bank cheque or cash. Cheques must be cleared before items are available for collection. Credit cards are not accepted.

8.

Failure to make payment: If a purchaser fails to make payment as outlined in point 7 above ART+OBJECT may without any advice to the purchaser exercise its right to: a) rescind or stop the sale, b) re offer the lot for sale to an underbidder or at auction. ART+OBJECT reserves the right to pursue the purchaser for any difference in sale proceeds if this course of action is chosen, c) to pursue legal remedy for breach of contract.

9.

Collection of goods: Purchased items are to be removed from ART+OBJECT premises immediately after payment or clearance of cheques. Absentee bidders must make provision for the uplifting of purchased items (see instructions on the facing page)

10.

Bidders obligations: The act of bidding means all bidders acknowledge that they are personally responsible for payment if they are the successful bidder. This includes all registered absentee or telephone bidders. Bidders acting as an agent for a third party must obtain written authority from ART+OBJECT and provide written instructions from any represented party and their express commitment to pay all funds relating to a successful bid by their nominated agent.

11.

Bids under reserve & highest subject bids: When the highest bid is below the vendor's reserve this work may be announced by the auctioneer as sold 'subject to vendor's authority' or some similar phrase. The effect of this announcement is to signify that the highest bidder will be the purchaser at the bid price if the vendor accepts this price. If this highest bid is accepted then the purchaser has entered a contract to purchase the item at the bid price plus any relevant buyers premium.

Important advice for buyers

The following information does not form part of the conditions of sale, however buyers, particularly first time bidders are recommended to read these notes.

A.

Bidding at auction: Please ensure your instructions to the auctioneer are clear and easily understood. It is well to understand that during a busy sale with multiple bidders the auctioneer may not be able to see all bids at all times. It is recommended that you raise your bidding number clearly and without hesitation. If your bid is made in error or you have misunderstood the bidding level please advise the auctioneer immediately of your error – prior to the hammer falling. Please note that if you have made a bid and the hammer has fallen and you are the highest bidder you have entered a binding contract to purchase an item at the bid price. New bidders in particular are advised to make themselves known to the sale auctioneer who will assist you with any questions about the conduct of the auction.

B.

Absentee bidding: ART+OBJECT welcomes absentee bids once the necessary authority has been completed and lodged with ART+OBJECT. A+O will do all it can to ensure bids are lodged on your behalf but accepts no liability for failure to carry out these bids. See the Absentee bidding form in this catalogue for information on lodging absentee bids. These are accepted up to 2 hours prior to the published auction commencement.

C.

Telephone bids: The same conditions apply to telephone bids. It is highly preferable to bid over a landline as the vagaries of cellphone connections may result in disappointment. You will be telephoned prior to your indicated lot arising in the catalogue order. If the phone is engaged or connection impossible the sale will proceed without your bidding. At times during an auction the bidding can be frenetic so you need to be sure you give clear instructions to the person executing your bids. The auctioneer will endeavour to cater to the requirements of phone bidders but cannot wait for a phone bid so your prompt participation is requested.

D.

New Zealand dollars: All estimates in this catalogue are in New Zealand dollars. The amount to be paid by successful bidders on the payment date is the New Zealand dollar amount stated on the purchaser invoice. Exchange rate variations are at the risk of the purchaser.

Absentee bid form

AUCTION NO 41

New Collectors Art
1 March 2011

**The Douglas Lloyd Jenkins
Collection & Decorative Arts**
2 March 2011

**The Arts of the Samurai &
Oceanic Artefacts**
3 March 2011

This completed and signed form authorizes ART+OBJECT to bid on my behalf at the above mentioned auction for the following lots up to prices indicated below. These bids are to be executed at the lowest price levels possible. I understand that if successful I will purchase the lot or

lots at or below the prices listed on this form and the listed buyers premium for this sale (15%) and GST on the buyers premium. I warrant also that I have read and understood and agree to comply with the conditions of sale as printed in the catalogue.

Lot no.	Description	Bid maximum (New Zealand dollars)
_____	_____	_____
_____	_____	_____
_____	_____	_____
_____	_____	_____
_____	_____	_____
_____	_____	_____
_____	_____	_____
_____	_____	_____
_____	_____	_____
_____	_____	_____
_____	_____	_____
_____	_____	_____
_____	_____	_____
_____	_____	_____

Payment and Delivery ART+OBJECT will advise me as soon as is practical that I am the successful bidder of the lot or lots described above. I agree to pay immediately on receipt of this advice. Payment will be by cash, cheque or bank transfer. I understand that cheques will need to be cleared before goods can be uplifted or dispatched. I will arrange for collection or dispatch of my purchases. If ART+OBJECT is instructed by me to arrange for packing and dispatch of goods I agree to pay any costs incurred by ART+OBJECT. Note: ART+OBJECT requests that these arrangements are made prior to the auction date to ensure prompt delivery processing.

Please indicate as appropriate by ticking the box:

☐ PHONE BID

☐ ABSENTEE BID

MR/MRS/MS: _____

SURNAME: _____

POSTAL ADDRESS: _____

STREET ADDRESS: _____

BUSINESS PHONE: _____

MOBILE: _____

FAX: _____

EMAIL: _____

Signed as agreed: _____

To register for Absentee bidding this form must be lodged with ART+OBJECT by 2pm on the day of the published sale time in one of three ways:

1. Fax this completed form to ART+OBJECT +64 9 354 4645
2. Email a printed, signed and scanned form to: info@artandobject.co.nz
3. Post to ART+OBJECT, PO Box 68 - 345 Newton, Auckland 1145, New Zealand

ART+OBJECT 3 Abbey Street, Newton, Auckland, New Zealand. Telephone +64 9 354 4646, Freephone 0800 80 60 01

New Collectors Art Artists Index

- Albrecht, Gretchen 141, 142, 165
 Baloghy, George 74
 Barker, David 154
 Binding, Wellesley 48, 49
 Boroughs, Justin 177, 178
 Braunias, Mark 45
 Brookes, Maurice 225
 Brown, Nigel 116
 Bryant, Michele 30
 Buchanan, Dean 223, 224
 Buckland Wright, John 204
 Burnett, Tom 70, 71
 Bustin, Debra 61
 Cane, Chris 26, 27
 Chance, George 31, 32, 33, 34
 Chapman, Paul 58
 Chilcott, Gavin 2, 19, 21, 22, 28, 35, 43, 44
 Clark, Nobby 232
 Cleavin, Barry 75, 98, 99, 102
 Cliarmont, Philip 150, 219
 Cole, Ruth 129
 Cotton, Shane 163, 164
 Crook, Gordon 209
 Dalgarno, Roy 101
 Dashper, Julian 89
 Dibble, Paul 97
 Driver, Don 91.1
 Elliott, Thomas 107
 Ellis, Meighan 54
 Ellis, Robert 183
 Esplin, Tom 195
 et al. 78
 Feu'u, Fatu 222
 Fong, Luise 186
 Frizzell, Dick 64, 65
 George, Darryn 118, 119, 120
 Gibson-Smith, Peter 37
 Gimblett, Max 81, 87
 Good, Roy 79
 Gopas, Rudolf 169
 Graham, Barbara 57
 Greig, Jason 174, 175, 176
 Hackett, Peter 140
 Haffern, Gail 155
 Hammond, Bill and Chilcott, Gavin 3, 4, 5
 Hammond, Bill 51
 Hanly, Pat 143, 208
 Harris, Jeffrey 6, 66, 149, 159, 160, 173
 Hartigan, Paul 182
 Heaphy, Chris 41
 Helmore, Des 47
 Hemer, Andre 90, 91
 Henderson, Louise 185
 Honour, Basil 170
 Hotere, Ralph 151, 152, 180
 Huddleston, W. 130
 Hughes, Sara 83
 Humphries, Clive 60
 Hurley, Gavin 148
 Illingworth, Michael 146
 Jansen, Monique 53
 Karaka, Emily 171
 Killeen, Richard 114
 Knight-Turner, Dennis 145
 Lane, Tony 38, 46, 55
 Lanting, Hans 194
 Larkin, Peata 121
 Lee-Johnson, Eric 230
 Lloyd, Trevor 210
 Maddox, Allen 50
 Matheson, Clare 86
 Maughan, Karl 85
 McCormack, Thomas Arthur 211, 213, 214
 McIvor, Lois 158
 McLeod, Rob 199
 McPhee, Charles 123, 124, 125, 126
 McWhannell, Richard 94, 216
 Millar, Judy 82
 Miró, Joan 36
 Mitchell, Smantha 167, 205
 Moffitt, Trevor 108, 109
 Moon, Nic 207
 Moore, Henry 220
 Muir, Janet 192
 Murado, Antonio 42
 Noble, Anne 189
 Page, Dugald 212, 228, 229
 Palmer, Stanley 73, 110, 157, 179, 197
 Parekowhai, Michael 92
 Pearson, Robert 17
 Peryer, Peter 7, 8, 9, 10, 11, 12, 14, 190
 Pick, Seraphine 88
 Pickmere, Alison 134
 Pieters, K. F 56
 Popplewell, Martin 233
 Pule, John 103, 112, 113, 187, 193
 Ramage, Don 231
 Ransom, Peter 72
 Rastorfer, Lorraine 184
 Reed, Bill 188
 Reynolds, John 172, 196
 Ritchie, June 77
 Robinson, Ann 95
 Robinson, James 80, 201
 Sameshima, Haru 16
 Sarich, David 153
 Schoon, Theo 122
 Scott, Ian 84, 147
 Shannon, Marie 1
 Shephard, Carole 62, 67
 Shotton Parker, John 181
 Siddell, Peter 128
 Siddell, Sylvia 138.1
 Siebert, Mark 217, 218
 Smither, Michael 59, 63, 69, 127, 226
 Southon, Zarahn 202, 203
 Spencer-Bower, Olivia 215
 Stewart, Helen 161
 Stichbury, Peter 96
 Stringer, Terry 93, 104
 Tapper, Garth 111, 168
 Thompson, Arthur 227
 Tootill, Jon 132
 Tricker, Gary 100
 Tuck, Barbara 156
 Tweedie, Merylyn 15, 52, 191, 206
 van Hout, Ronnie 13
 Walsh, Alfred 105
 Walters, Gordon 115, 162
 Watson, Ruth 18, 39, 40
 Webb, Marilyn 68, 76, 200
 Wheeler, Pete 106
 White, A. Lois 144
 White, Robin 135, 136, 137, 138
 Williams, Fred 221
 Winkelmann, Henry 133
 Wong, Sing Tai 139
 Woods, George 198
 Woollaston, Toss 117, 166

Illustrated: lot 560 (Bob Roukema ply armchair), lot 550 (John Chrichton charger), lot 799 (1950's planter), lot 604 ('Maori Legend' wool-pile rug).



New Collectors Art

Tuesday 1 March at 6.00pm

The Douglas Lloyd Jenkins Collection of Modern Design and Decorator items

Wednesday 2 March at 5.30pm

The Arts of the Samurai from the collection of Harry Pappafloratos Asian Art

Oceanic Art from a Private Collection

Thursday 3 March at 6.30pm