

# ART OBJECT

41 NEW COLLECTORS ART / DOUGLAS CLOYD JENKINS' COLLECTION / THE ARTS OF THE SAMURAI AND OCEANIC ARTIFACTS







# **New Collectors Art**

**Tuesday 1 March at 6.00pm**

## **The Douglas Lloyd Jenkins Collection of Modern Design and Decorator items**

**Wednesday 2 March at 5.30pm**

## **The Arts of the Samurai from the collection of Harry Pappafloratos Asian Art**

## **Oceanic Art from a Private Collection**

**Thursday 3 March at 6.30pm**

Please note: Auction commencement times  
vary for each auction. See above.

Cover: The interior of Douglas Lloyd Jenkins former Auckland home, designed by Robin Simpson in the 1930's.

Inside front cover: lot 748 (Beswick vase), lot 515 (Shufflebotham for Crown Lynn hand-potted vase),  
lot 556 (NZ 1960's Noguchi inspired coffee table), lot 547 (John Chrichton standard lamp).

Welcome to A+O's first catalogue of 2011. A+O was founded in 2007 by collectors and for collectors – the support we have enjoyed from important figures within New Zealand's visual and decorative arts worlds has been vital to the success of the company and the wide network of collector relationships we now enjoy.

This catalogue is built around five extremely diverse and fascinating collectors many of whom have high profile roles in our public life. Each collection is testimony to the unique eye and passion a long term collector brings to their chosen fields.

**The Estate of Gregory Flint.** Greg Flint (1952 – 2010) was one of New Zealand's pioneering art dealers. In the 80s and 90s Flint exhibited some of New Zealand's cutting edge contemporary art by artists such as Michael Stevenson, Bill Hammond, Ronnie van Hout, L.Budd, Judy Darragh, Ruth Watson, Marie Shannon and Gavin Chilcott.

**The Bob and Barbara Harvey Collection.** Bob Harvey is perhaps most well known as the former mayor of Waitakere and prior to that he enjoyed a long career in advertising and the media. After over 30 years in their Glenfield, Auckland home Bob and his wife Barbara will soon be moving to a new address and have decided to sell their art collection of many years. It is a veritable who's who of New Zealand art from the 1950s to the 1980s with works by Colin McCahon, Robin White, Peter and Sylvia Siddell, Gretchen Albrecht, Ruth Cole, Michael Smither and that icon of the Bronze Goat years David Kennedy.

## **The Douglas Lloyd Jenkins Collection of Modern Design and Decorator Items.**

Douglas Lloyd Jenkins is one of the most influential writers, critics and curators to have emerged in New Zealand over the last three decades. His 2004 publication *At Home, A Century of New Zealand Design* is regarded as the definitive text on the topic and is one of the most referred to books in the A+O library. Today Douglas is the director of the Hawkes Bay Museum & Art Gallery and based in Napier. His taste has moved in a new direction and so we and many new collectors are blessed to be able to enjoy and perhaps acquire one or two of the fabulous artworks and design items in this catalogue. Please turn to page 39 for a fascinating introduction to the collection.

The catalogue is rounded out with two distinguished private collections of rare **Oceanic artefacts** and striking **Arts of the Samurai** including the collection of well known Wellington based collector and Orientalist Harry Pappafioratos.

**ARTSPACE Fundraiser:** Please do not miss lots 300 and 301. Kindly donated by a generous and anonymous collector these two items will be auctioned at the commencement of our March 2 auction with proceeds going to our neighbours down the road ARTSPACE.



A+O is pleased to announce the appointment of Giulia Rodighiero to the role of Operations Executive. Giulia joins A+O from Christies, London where she worked in the Asian Art Department. A specialist in Chinese Art She graduated in Chinese Studies from Ca' Foscari University, Venice, and subsequently obtained a masters degree in Asian

Arts and Archaeology from SOAS (School of Oriental and African Studies), University of London. She also spent a year in China studying Chinese Art at the Beijing University. Giulia has been instrumental in researching and preparing the Asian section of this catalogue.

We look forward to meeting new collectors at our upcoming exhibition viewing which opens on February the 25th.






# Wield the precision of the new Lexus IS350 F Sport.

Real performance is wielded with precision. Real performance is the mighty 233kW of power delivered by a 3.5 litre 6 cylinder engine. Real performance is rocketing from 0-100km/h in a mere 5.6 seconds. Welcome the real performance of the stunning new 2011, IS350 F Sport. Pre-loaded with a class-beating array of advanced features for only \$103,300.

The new Lexus IS350 F Sport. Wield precision. Visit your Lexus dealer now.





# Important Paintings and Contemporary Art

7 April 2011

Entries close: 11 March

**Colin McCahon**

Necessary Protection

synthetic polymer paint and  
graphite on Steinbach paper  
mounted to board (1971)

1100 x 730mm

\$160 000 – \$220 000

---

# everyday needs<sup>®</sup>

---

---

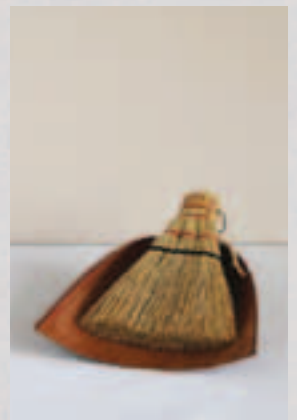
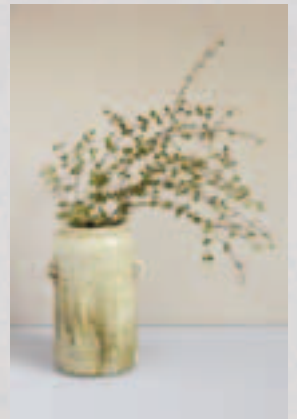
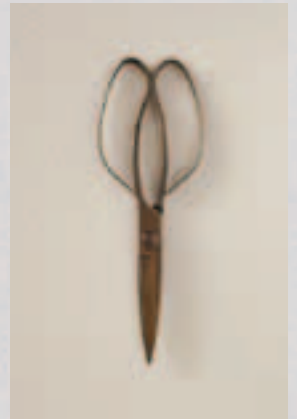
Katie  
Lockhart's  
online  
homeware  
store

---

new  
stock  
arriving  
weekly

---

[everyday-needs.com](http://everyday-needs.com)





# INVIVO MARLBOROUGH SAUVIGNON BLANC 2010

"It delivers an enchanting balance  
between the herbaceous and tropical  
fruit camps"

Cuisine Magazine



5 stars and rated Top 10  
Sauvignon Blancs  
in New Zealand 2009 & 2010

Official Partner



For more information and Invivo outlets visit: [www.invivowines.com](http://www.invivowines.com)





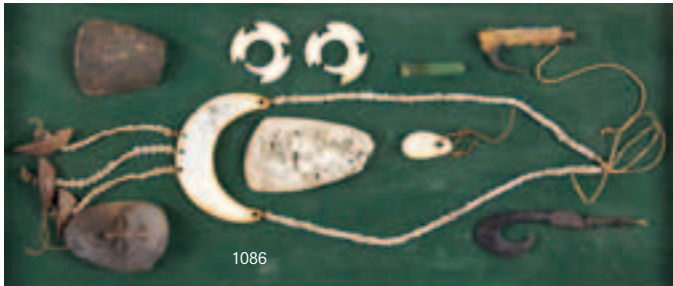


## An introduction to a private collection of Oceanic Artefacts

This fine private collection of Oceanic artefacts (lots 1073 – 1094) was assembled by trade and exchange or as gifts of esteem in the Vanuatu region, primarily on the islands of Ambrym, Santa Cruz and Malakula in the late 1950s. Our client also observed many of the items being used in rituals and rites of passage such as grade ceremonies, others had been in use for many years prior. Many are still wrapped in the original leaves used to protect the artefacts from smoke damage whilst in stored in Nakumal huts only accessible to qualified elders.

The collection contains many pieces rarely found in public collections or reference publications and a number that through their precarious and organic modes of construction constitute something of a miracle in that they are intact, testimony to the care and consideration given these artefacts by the collector.

The photograph reproduced is from the collector's extensive photographic archive of historic and personal images and is representative of the types of items in this catalogue and the environment from which they came.



1073. A fine and rare North Abram secret society ceremonial mask. Made of fernwood, fibre, vegetable paste and spider web. The abstract human face with boar's tusks issuing from the cheek section, painted in red ochre, black and white mineral pigment with attached smoked finely-meshed spider's web. The body of a captured beetle retained in the web. The mask in fine condition having been historically wrapped in Pandanus leaf and kept in a Nakumal hut when not in use, 220 x 220mm \$1500 – \$3000

1074. A rare Vanuatu Malekula Island mask, Nambukie, the abstract human face with broad open mouth with boar's tusks issuing from the cheeks, painted in red, black and white mineral pigment and with dot motifs indicating the mask's use in initiation ceremonies. The mask with an attached finely meshed smoked spider web mounted on a blackened wood staff, 760 x 150mm \$1000 – \$3000  
A similar example illustrated in Oceanic Art by Anthony JP Meyer, p.426

1075. A Vanuatu interior Malekula island grade society mask, Nambukie, the abstract human face with broad mouth, with boar's tusks issuing from the cheeks, painted in red, black and white mineral pigment, with attached smoked spider web. Mounted on a bamboo stake. 140 x 180mm \$1000 – \$3000



1076. A rare Malekula island overmodeled skull. Vegetal paste, human skull, spider's web, cowrie shells and feathers \$3000 – \$5000  
After the death of an important man of high ranking grade the body was installed on a funerary platform and left to decompose. The skull was then detached and overmodeled with a mixture of vegetable matter, breadfruit sap and other plant juices and the facial features of the deceased reproduced as faithfully as possible. At the conclusion of the various ceremonies the skull was later installed in the Men's house (Meyer, Oceanic Art p.425)

A similar example illustrated in Oceanic Art by Anthony JP Meyer, p.425

1077. Vanuatu Malekula Island Flying Fox figure with fern, vegetable matter and pigment \$500 – \$1500  
The Flying Fox, symbolic of death in Malekula island society, was suspended on the funeral platform of an important man of high ranking grade

1078. Rare Vanuatu Malekula Island figure Temes nevimbure, wood, vegetable matter, boar's tusks and spider's webs, 1200 x 540mm \$3000 – \$5000  
The figure, painted in red ochre, white mineral pigment, represents one of the young boys during a grade ceremony. Prior to the grade ceremony the boys spend nine months in a small hut away from the village and are visited and taught by village elders in preparation for life as an adult. At the conclusion of the grade ceremonies Temes nevimbure figures were typically destroyed or left to degrade on the forest floor. This rare example, collected in the interior of Malekula Island in the 1950's, is in fine original condition.

1079. Santa Cruz Island shell pendant 'Tema', tridacna shell, turtle shell and fibre. The large clam shell disc overlaid with turtle shell carved in the form of a stylised frigate bird below fish forms, attached cord with cut shell currency discs, D. 120mm \$400 – \$800

1080. Santa Cruz Island shell pendant 'Tema', gold lipped mother of pearl shell, turtle shell and fibre, the crescent shaped shell overlaid in turtle shell carved in the form of stylised birds with attached cords with cut shell currency discs, W. 140mm \$400 – \$800

1081. Santa Cruz Island pendant 'Tema' tridacna shell, turtle shell, fibre and beads, the large clam shell overlaid in turtle shell with a stylised and fish tail design, pierced to the upper section and lower section with fibre attachment embellished with small red beads, 180 x 130mm \$400 – \$800

1082. Santa Cruz Island necklace with a golden cowrie shell pierced with attached cord with cut shell discs and with attached dog's teeth and a carved shell bird \$350 – \$700

1083. Santa Cruz Island whale's tooth pendant pierced with attached cord with cut shell currency discs and dogs teeth, L. 450mm \$350 – \$700

1084. Santa Cruz, Reef Island pendant, tridacna shell, turtle shell, fibre and dog's teeth, the circular clam shell disc overlaid in cut turtle shell with a stylised fish, pierced and with cut shell currency, fibre and dogs tooth attachments \$400 – \$800

1073



1076

1075



1074



1078



1083



1080

1085. A rare 19th century Vanuatu Ambrym Island ceremonial Tam Tam [slit drum] of massive cylindrical form with slit at the centre, the head with pierced nose and disc like eyes, the dentil coiffure framing the face. Weathered patina with some degradation of the wood to the upper section and base  
\$8000 – \$16000

1086. A collection of various artefacts housed in a colonial cabinet including two Solomon Island fish hooks, Santa Cruz necklace, two Santa Cruz nose ornaments, one small NZ pounamu tiki, black adze and white adze (Vanuatu) and a small shell ornament from Vanuatu  
\$800 – \$1200

1087. Vanuatu Ambrym Island stone carved talisman figures. The figures used to empower the owner during trade. One figure remains planted in the ground facing in the direction of the village where the trading activity will take place, the other smaller figure worn concealed in the belt to empower the owner during negotiations.  
\$250 – \$500

1088. Vanuatu Ambrym Island pig hammer carved with an ancestral head with dentil coiffure, L. 780mm  
\$200 – \$400

1089. 19th century Vanuatu Ambrym Island ceremonial food platter, W. 810mm  
\$200 – \$400

1090. 19th century Vanuatu Ambrym Island ceremonial food platter with attached fibre & nut dance rattle, W. 760mm  
\$400 – \$800

1091. Vanuatu Malekula Island raku fired bowl  
\$50 – \$100

1092. 18th century Fijian ula with saw tooth grip (broken to the head section)  
\$250 – \$400

1093. A Fijian ceremonial dish carved in the form of a turtle, D. 320mm  
\$300 – \$700

1094. A Fijian carved shark hook with attached fibre snood, L. 250mm  
\$1000 – \$2000

1095. A rare Papua New Guinea cargo cult shield made from a 44 gallon oil drum. Painted with the face of the phantom and inscribed Phantom vs Evil, 1780 x 850mm  
\$2000 – \$3000

The drum was given by an oil tanker driver to ensure safe passage through the New Guinea Highlands. After the oil had been used the drum was flattened and painted to form a shield.

1096. A Papua New Guinea Mt Hagen hafted adze  
\$200 – \$400

1097. Papua New Guinea Abelam male spirit figure decorated with ochre and mineral pigment, H. 750mm  
\$200 – \$400



1085



1085

1098. A late 19th century Kahu huruhuru (feather cloak) with muka kaupapa flax fibre base decorated with Kiwi, weka and pheasant feathers, 1000 x 1240mm Y registration pending  
\$4000 – \$8000

1099. An early Taiaha with un-carved tongue and head, L. 1600mm Y6117  
\$500 – \$1000

1100. A Maori ridge back tiki (Duff type 4A0), W. 230mm  
\$400 – \$800

1101. A Maori argillite tiki, L. 120mm Y 14564  
\$60 – \$100

1102. A large ko [digging stick] with notching to the lower section of the blade, L. 2030mm  
\$300 – \$500

1103. A Maori stone sinker Y09536  
\$50 – \$100

1104. Fijian Kava bowl  
\$100 – \$200

1105. A pair of African carved male and female figures with painted pigment decoration, H. 460mm  
\$100 – \$200

1106. Samoan kava bowl raised on thirteen cylindrical legs, D. 430mm  
\$300 – \$500

1107. A fine Aboriginal boomerang. Traditional non symmetrical form with painted pigment decoration, L. 900mm  
\$250 – \$400

1108. An Aboriginal Nulla Nulla war club L.1000mm  
\$350 – \$500



## African Art



1098



1100



1095



1099

- 1109. A Tanzania Haya mask with pierced oval mouth below a broad nose framed by pieced oval eyes with vertical scarification to the cheeks, H. 330mm  
\$600 – \$800
- 1110. A good Tchokwe pwo mask with oval face with open pierced mouth baring teeth beneath oval eyes and with scafication to the forehead and cheeks, wearing a vegetal fibre net embellished with beads  
\$1000 – \$2000
- 1111. A Good Fang mask with an oval facial plane and with protruding mouth and aquiline nose framed by close set pierced eyes and expressive arching brows, covered in a layer of kaolin, H. 580mm  
\$1000 – \$2000
- 1112. African Neckrest (nyepeikju)  
\$400 – \$600
- 1113. African Neckrest (nyepeikju)  
\$400 – \$600
- 1114. Neckrest (nyepeikju)  
\$300 - \$500
- 1115. Three ceremonial spears complete with scabbards  
\$200 – \$300
- 1116. Ceremonial sword complete with leather sheath  
\$100 – \$200
- 1117. Ceremonial sword complete with leather sheath  
\$100 – \$200
- 1118. Ivory thumb eggs for dance (nyekaboboat)  
\$100 – \$200



1094



1090

# Conditions of sale

Please note: it is assumed that all bidders at auction have read and agreed to the conditions described on this page.  
ART+OBJECT directors are available during the auction viewing to clarify any questions you may have.

1.

**Registration:** Only registered bidders may bid at auction. You are required to complete a bidding card or absentee bidding form prior to the auction giving your correct name, address and telephone contact + supplementary information such as email addresses that you may wish to supply to ART+OBJECT

2.

**Bidding:** The highest bidder will be the purchaser subject to the auctioneer accepting the winning bid and any vendor's reserve having been reached. The auctioneer has the right to refuse any bid. If this takes place or in the event of a dispute the auctioneer may call for bids at the previous lowest bid and proceed from this point. Bids advance at sums decreed by the auctioneer unless signaled otherwise by the auctioneer. No bids may be retracted. The auctioneer retains the right to bid on behalf of the vendor up to the reserve figure.

3.

**Reserve:** Lots are offered and sold subject to the vendor's reserve price being met.

4.

**Lots offered and sold as described and viewed:** ART+OBJECT makes all attempts to accurately describe and catalogue lots offered for sale. Notwithstanding this neither the vendor nor ART+OBJECT accepts any liability for errors of description or faults and imperfections whether described in writing or verbally. This applies to questions of authenticity and quality of the item. Buyers are deemed to have inspected the item thoroughly and proceed on their own judgment. The act of bidding is agreed by the buyer to be an indication that they are satisfied on all counts regarding condition and authenticity.

5.

**Buyers premium:** The purchaser by bidding acknowledges their acceptance of a buyers premium of 15% + GST on the premium to be added to the hammer price in the event of a successful sale at auction.

6.

**ART+OBJECT is an agent for a vendor:** A+O has the right to conduct the sale of an item on behalf of a vendor. This may include withdrawing an item from sale for any reason.

7.

**Payment:** Successful bidders are required to make full payment immediately post sale – being either the day of the sale or the following day. If for any reason payment is delayed then a 20% deposit is required immediately and the balance to 100% required within 3 working days of the sale date. Payment can be made by Eftpos, bank cheque or cash. Cheques must be cleared before items are available for collection. Credit cards are not accepted.

8.

**Failure to make payment:** If a purchaser fails to make payment as outlined in point 7 above ART+OBJECT may without any advice to the purchaser exercise its right to: a) rescind or stop the sale, b) re offer the lot for sale to an underbidder or at auction. ART+OBJECT reserves the right to pursue the purchaser for any difference in sale proceeds if this course of action is chosen, c) to pursue legal remedy for breach of contract.

9.

**Collection of goods:** Purchased items are to be removed from ART+OBJECT premises immediately after payment or clearance of cheques. Absentee bidders must make provision for the uplifting of purchased items (see instructions on the facing page)

10.

**Bidders obligations:** The act of bidding means all bidders acknowledge that they are personally responsible for payment if they are the successful bidder. This includes all registered absentee or telephone bidders. Bidders acting as an agent for a third party must obtain written authority from ART+OBJECT and provide written instructions from any represented party and their express commitment to pay all funds relating to a successful bid by their nominated agent.

11.

**Bids under reserve & highest subject bids:** When the highest bid is below the vendor's reserve this work may be announced by the auctioneer as sold 'subject to vendor's authority' or some similar phrase. The effect of this announcement is to signify that the highest bidder will be the purchaser at the bid price if the vendor accepts this price. If this highest bid is accepted then the purchaser has entered a contract to purchase the item at the bid price plus any relevant buyers premium.

## Important advice for buyers

The following information does not form part of the conditions of sale, however buyers, particularly first time bidders are recommended to read these notes.

A.

**Bidding at auction:** Please ensure your instructions to the auctioneer are clear and easily understood. It is well to understand that during a busy sale with multiple bidders the auctioneer may not be able to see all bids at all times. It is recommended that you raise your bidding number clearly and without hesitation. If your bid is made in error or you have misunderstood the bidding level please advise the auctioneer immediately of your error – prior to the hammer falling. Please note that if you have made a bid and the hammer has fallen and you are the highest bidder you have entered a binding contract to purchase an item at the bid price. New bidders in particular are advised to make themselves known to the sale auctioneer who will assist you with any questions about the conduct of the auction.

B.

**Absentee bidding:** ART+OBJECT welcomes absentee bids once the necessary authority has been completed and lodged with ART+OBJECT. A+O will do all it can to ensure bids are lodged on your behalf but accepts no liability for failure to carry out these bids. See the Absentee bidding form in this catalogue for information on lodging absentee bids. These are accepted up to 2 hours prior to the published auction commencement.

C.

**Telephone bids:** The same conditions apply to telephone bids. It is highly preferable to bid over a landline as the vagaries of cellphone connections may result in disappointment. You will be telephoned prior to your indicated lot arising in the catalogue order. If the phone is engaged or connection impossible the sale will proceed without your bidding. At times during an auction the bidding can be frenetic so you need to be sure you give clear instructions to the person executing your bids. The auctioneer will endeavour to cater to the requirements of phone bidders but cannot wait for a phone bid so your prompt participation is requested.

D.

**New Zealand dollars:** All estimates in this catalogue are in New Zealand dollars. The amount to be paid by successful bidders on the payment date is the New Zealand dollar amount stated on the purchaser invoice. Exchange rate variations are at the risk of the purchaser.

# Absentee bid form

AUCTION NO 41

**New Collectors Art**  
1 March 2011

**The Douglas Lloyd Jenkins  
Collection & Decorative Arts**  
2 March 2011

**The Arts of the Samurai &  
Oceanic Artefacts**  
3 March 2011

This completed and signed form authorizes ART+OBJECT to bid on my behalf at the above mentioned auction for the following lots up to prices indicated below. These bids are to be executed at the lowest price levels possible. I understand that if successful I will purchase the lot or

lots at or below the prices listed on this form and the listed buyers premium for this sale (15%) and GST on the buyers premium. I warrant also that I have read and understood and agree to comply with the conditions of sale as printed in the catalogue.

Lot no.	Description	Bid maximum (New Zealand dollars)
_____	_____	_____
_____	_____	_____
_____	_____	_____
_____	_____	_____
_____	_____	_____
_____	_____	_____
_____	_____	_____
_____	_____	_____
_____	_____	_____
_____	_____	_____
_____	_____	_____
_____	_____	_____
_____	_____	_____
_____	_____	_____

**Payment and Delivery** ART+OBJECT will advise me as soon as is practical that I am the successful bidder of the lot or lots described above. I agree to pay immediately on receipt of this advice. Payment will be by cash, cheque or bank transfer. I understand that cheques will need to be cleared before goods can be uplifted or dispatched. I will arrange for collection or dispatch of my purchases. If ART+OBJECT is instructed by me to arrange for packing and dispatch of goods I agree to pay any costs incurred by ART+OBJECT. Note: ART+OBJECT requests that these arrangements are made prior to the auction date to ensure prompt delivery processing.

Please indicate as appropriate by ticking the box:

☐ PHONE BID

☐ ABSENTEE BID

MR/MRS/MS: \_\_\_\_\_

SURNAME: \_\_\_\_\_

POSTAL ADDRESS: \_\_\_\_\_

STREET ADDRESS: \_\_\_\_\_

BUSINESS PHONE: \_\_\_\_\_

MOBILE: \_\_\_\_\_

FAX: \_\_\_\_\_

EMAIL: \_\_\_\_\_

Signed as agreed: \_\_\_\_\_

To register for Absentee bidding this form must be lodged with ART+OBJECT by 2pm on the day of the published sale time in one of three ways:

1. Fax this completed form to ART+OBJECT +64 9 354 4645
2. Email a printed, signed and scanned form to: [info@artandobject.co.nz](mailto:info@artandobject.co.nz)
3. Post to ART+OBJECT, PO Box 68 - 345 Newton, Auckland 1145, New Zealand

**ART+OBJECT** 3 Abbey Street, Newton, Auckland, New Zealand. Telephone +64 9 354 4646, Freephone 0800 80 60 01



# New Collectors Art Artists Index

- Albrecht, Gretchen 141, 142, 165  
 Baloghy, George 74  
 Barker, David 154  
 Binding, Wellesley 48, 49  
 Boroughs, Justin 177, 178  
 Braunias, Mark 45  
 Brookes, Maurice 225  
 Brown, Nigel 116  
 Bryant, Michele 30  
 Buchanan, Dean 223, 224  
 Buckland Wright, John 204  
 Burnett, Tom 70, 71  
 Bustin, Debra 61  
 Cane, Chris 26, 27  
 Chance, George 31, 32, 33, 34  
 Chapman, Paul 58  
 Chilcott, Gavin 2, 19, 21, 22, 28, 35, 43, 44  
 Clark, Nobby 232  
 Cleavin, Barry 75, 98, 99, 102  
 Cliarmont, Philip 150, 219  
 Cole, Ruth 129  
 Cotton, Shane 163, 164  
 Crook, Gordon 209  
 Dalgarno, Roy 101  
 Dashper, Julian 89  
 Dibble, Paul 97  
 Driver, Don 91.1  
 Elliott, Thomas 107  
 Ellis, Meighan 54  
 Ellis, Robert 183  
 Esplin, Tom 195  
 et al. 78  
 Feu'u, Fatu 222  
 Fong, Luise 186  
 Frizzell, Dick 64, 65  
 George, Darryn 118, 119, 120  
 Gibson-Smith, Peter 37  
 Gimblett, Max 81, 87  
 Good, Roy 79  
 Gopas, Rudolf 169  
 Graham, Barbara 57  
 Greig, Jason 174, 175, 176  
 Hackett, Peter 140  
 Haffern, Gail 155  
 Hammond, Bill and Chilcott, Gavin 3, 4, 5  
 Hammond, Bill 51  
 Hanly, Pat 143, 208  
 Harris, Jeffrey 6, 66, 149, 159, 160, 173  
 Hartigan, Paul 182  
 Heaphy, Chris 41  
 Helmore, Des 47  
 Hemer, Andre 90, 91  
 Henderson, Louise 185  
 Honour, Basil 170  
 Hotere, Ralph 151, 152, 180  
 Huddleston, W. 130  
 Hughes, Sara 83  
 Humphries, Clive 60  
 Hurley, Gavin 148  
 Illingworth, Michael 146  
 Jansen, Monique 53  
 Karaka, Emily 171  
 Killeen, Richard 114  
 Knight-Turner, Dennis 145  
 Lane, Tony 38, 46, 55  
 Lanting, Hans 194  
 Larkin, Peata 121  
 Lee-Johnson, Eric 230  
 Lloyd, Trevor 210  
 Maddox, Allen 50  
 Matheson, Clare 86  
 Maughan, Karl 85  
 McCormack, Thomas Arthur 211, 213, 214  
 McIvor, Lois 158  
 McLeod, Rob 199  
 McPhee, Charles 123, 124, 125, 126  
 McWhannell, Richard 94, 216  
 Millar, Judy 82  
 Miró, Joan 36  
 Mitchell, Smantha 167, 205  
 Moffitt, Trevor 108, 109  
 Moon, Nic 207  
 Moore, Henry 220  
 Muir, Janet 192  
 Murado, Antonio 42  
 Noble, Anne 189  
 Page, Dugald 212, 228, 229  
 Palmer, Stanley 73, 110, 157, 179, 197  
 Parekowhai, Michael 92  
 Pearson, Robert 17  
 Peryer, Peter 7, 8, 9, 10, 11, 12, 14, 190  
 Pick, Seraphine 88  
 Pickmere, Alison 134  
 Pieters, K. F 56  
 Popplewell, Martin 233  
 Pule, John 103, 112, 113, 187, 193  
 Ramage, Don 231  
 Ransom, Peter 72  
 Rastorfer, Lorraine 184  
 Reed, Bill 188  
 Reynolds, John 172, 196  
 Ritchie, June 77  
 Robinson, Ann 95  
 Robinson, James 80, 201  
 Sameshima, Haru 16  
 Sarich, David 153  
 Schoon, Theo 122  
 Scott, Ian 84, 147  
 Shannon, Marie 1  
 Shephard, Carole 62, 67  
 Shotton Parker, John 181  
 Siddell, Peter 128  
 Siddell, Sylvia 138.1  
 Siebert, Mark 217, 218  
 Smither, Michael 59, 63, 69, 127, 226  
 Southon, Zarahn 202, 203  
 Spencer-Bower, Olivia 215  
 Stewart, Helen 161  
 Stichbury, Peter 96  
 Stringer, Terry 93, 104  
 Tapper, Garth 111, 168  
 Thompson, Arthur 227  
 Tootill, Jon 132  
 Tricker, Gary 100  
 Tuck, Barbara 156  
 Tweedie, Merylyn 15, 52, 191, 206  
 van Hout, Ronnie 13  
 Walsh, Alfred 105  
 Walters, Gordon 115, 162  
 Watson, Ruth 18, 39, 40  
 Webb, Marilyn 68, 76, 200  
 Wheeler, Pete 106  
 White, A. Lois 144  
 White, Robin 135, 136, 137, 138  
 Williams, Fred 221  
 Winkelmann, Henry 133  
 Wong, Sing Tai 139  
 Woods, George 198  
 Woollaston, Toss 117, 166

Illustrated: lot 560 (Bob Roukema ply armchair), lot 550 (John Chrichton charger), lot 799 (1950's planter), lot 604 ('Maori Legend' wool-pile rug).



# New Collectors Art

Tuesday 1 March at 6.00pm

## The Douglas Lloyd Jenkins Collection of Modern Design and Decorator items

Wednesday 2 March at 5.30pm

## The Arts of the Samurai from the collection of Harry Pappafloratos Asian Art

## Oceanic Art from a Private Collection

Thursday 3 March at 6.30pm