

ART OBJECT

41 NEW COLLECTORS ART / DOUGLAS CLOYD JENKINS' COLLECTION / THE ARTS OF THE SAMURAI AND OCEANIC ARTIFACTS







New Collectors Art

Tuesday 1 March at 6.00pm

The Douglas Lloyd Jenkins Collection of Modern Design and Decorator items

Wednesday 2 March at 5.30pm

The Arts of the Samurai from the collection of Harry Pappafloratos Asian Art

Oceanic Art from a Private Collection

Thursday 3 March at 6.30pm

Please note: Auction commencement times
vary for each auction. See above.

Cover: The interior of Douglas Lloyd Jenkins former Auckland home, designed by Robin Simpson in the 1930's.

Inside front cover: lot 748 (Beswick vase), lot 515 (Shufflebotham for Crown Lynn hand-potted vase),
lot 556 (NZ 1960's Noguchi inspired coffee table), lot 547 (John Chrichton standard lamp).

Welcome to A+O's first catalogue of 2011. A+O was founded in 2007 by collectors and for collectors – the support we have enjoyed from important figures within New Zealand's visual and decorative arts worlds has been vital to the success of the company and the wide network of collector relationships we now enjoy.

This catalogue is built around five extremely diverse and fascinating collectors many of whom have high profile roles in our public life. Each collection is testimony to the unique eye and passion a long term collector brings to their chosen fields.

The Estate of Gregory Flint. Greg Flint (1952 – 2010) was one of New Zealand's pioneering art dealers. In the 80s and 90s Flint exhibited some of New Zealand's cutting edge contemporary art by artists such as Michael Stevenson, Bill Hammond, Ronnie van Hout, L.Budd, Judy Darragh, Ruth Watson, Marie Shannon and Gavin Chilcott.

The Bob and Barbara Harvey Collection. Bob Harvey is perhaps most well known as the former mayor of Waitakere and prior to that he enjoyed a long career in advertising and the media. After over 30 years in their Glenfield, Auckland home Bob and his wife Barbara will soon be moving to a new address and have decided to sell their art collection of many years. It is a veritable who's who of New Zealand art from the 1950s to the 1980s with works by Colin McCahon, Robin White, Peter and Sylvia Siddell, Gretchen Albrecht, Ruth Cole, Michael Smither and that icon of the Bronze Goat years David Kennedy.

The Douglas Lloyd Jenkins Collection of Modern Design and Decorator Items.

Douglas Lloyd Jenkins is one of the most influential writers, critics and curators to have emerged in New Zealand over the last three decades. His 2004 publication *At Home, A Century of New Zealand Design* is regarded as the definitive text on the topic and is one of the most referred to books in the A+O library. Today Douglas is the director of the Hawkes Bay Museum & Art Gallery and based in Napier. His taste has moved in a new direction and so we and many new collectors are blessed to be able to enjoy and perhaps acquire one or two of the fabulous artworks and design items in this catalogue. Please turn to page 39 for a fascinating introduction to the collection.

The catalogue is rounded out with two distinguished private collections of rare **Oceanic artefacts** and striking **Arts of the Samurai** including the collection of well known Wellington based collector and Orientalist Harry Pappafioratos.

ARTSPACE Fundraiser: Please do not miss lots 300 and 301. Kindly donated by a generous and anonymous collector these two items will be auctioned at the commencement of our March 2 auction with proceeds going to our neighbours down the road ARTSPACE.



A+O is pleased to announce the appointment of Giulia Rodighiero to the role of Operations Executive. Giulia joins A+O from Christies, London where she worked in the Asian Art Department. A specialist in Chinese Art She graduated in Chinese Studies from Ca' Foscari University, Venice, and subsequently obtained a masters degree in Asian

Arts and Archaeology from SOAS (School of Oriental and African Studies), University of London. She also spent a year in China studying Chinese Art at the Beijing University. Giulia has been instrumental in researching and preparing the Asian section of this catalogue.

We look forward to meeting new collectors at our upcoming exhibition viewing which opens on February the 25th.




Wield the precision of the new Lexus IS350 F Sport.

Real performance is wielded with precision. Real performance is the mighty 233kW of power delivered by a 3.5 litre 6 cylinder engine. Real performance is rocketing from 0-100km/h in a mere 5.6 seconds. Welcome the real performance of the stunning new 2011, IS350 F Sport. Pre-loaded with a class-beating array of advanced features for only \$103,300.

The new Lexus IS350 F Sport. Wield precision. Visit your Lexus dealer now.





Important Paintings and Contemporary Art

7 April 2011

Entries close: 11 March

Colin McCahon

Necessary Protection

synthetic polymer paint and
graphite on Steinbach paper
mounted to board (1971)

1100 x 730mm

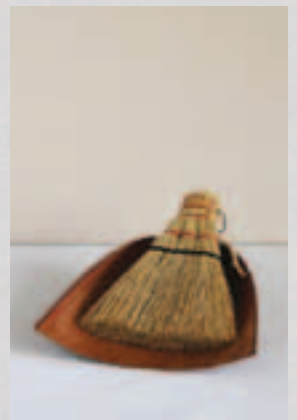
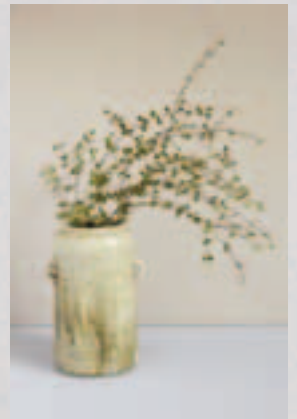
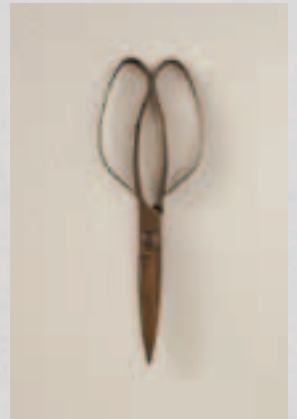
\$160 000 – \$220 000

everyday needs[®]

Katie
Lockhart's
online
homeware
store

new
stock
arriving
weekly

everyday-needs.com



INVIVO MARLBOROUGH SAUVIGNON BLANC 2010

"It delivers an enchanting balance
between the herbaceous and tropical
fruit camps"

Cuisine Magazine



5 stars and rated Top 10
Sauvignon Blancs
in New Zealand 2009 & 2010

Official Partner



For more information and Invivo outlets visit: www.invivowines.com



The Arts of the Samurai from the collection of Harry Pappafloratos Asian Art Oceanic Art from a Private Collection

Auction – Thursday 3 March at 6.30pm
3 Abbey Street, Newton, Auckland

Viewing

Friday 25 February	9am – 5pm
Saturday 26 February	11am – 4pm
Sunday 27 February	11am – 4pm
Monday 8 February	9am – 5pm
Tuesday 1 March	9am – 5pm
Wednesday 2 March	9am – 5pm
Thursday 3 March	9am – 1pm

An Introduction to the Arts of the Samurai – from the Collection of Harry Pappafloratos

Harry Pappafloratos is a well known figure in New Zealand and specifically Wellington circles. His passion for collecting began in the 1970's. During his time at Victoria university. His early interest was ethnographica of all types but specifically African and Asian arts. His earliest purchases were constrained by a student's purse but as his career in Market Research blossomed his range of interests expanded into Asian lacquerware, ceramics, metalware and swords and woodblock prints.

For Harry his collecting passion has for thirty five years not just been fuelled by fascination for the items contained in this catalogue, but even more importantly the fraternity of the collectors with and from whom he has shared and exchanged information and camaraderie.

Harry is a subscriber to the view that the collectors role is that of custodian of these precious items from the past and that there is a duty to pass these on to keep the flame alive. In this spirit he is offering this portion of his extensive collection.



Japanese Art

- | | | |
|---|---|--|
| 850. A Meiji period Japanese wood <u>hibachi</u> ('fire bowl') with gilt lacquer and mother-of-pearl decoration of flowering <u>kiku</u> sprays and butterflies, D. 305mm
\$150 – \$250 | 859. A Japanese album of black and white vintage photographs
\$50 – \$100 | 869. A Japanese gilt lacquer Buddhist figural group, mounted on a wood frame, 240 x 210mm (few repairs and losses)
\$100 – \$200 |
| 851. A Japanese Meiji period copper charcoal pot, with twin loop handles and lid, H. 320mm
\$70 – \$100 | 860. A Japanese Meiji period Katsura Kabuki wig in original stand and wooden box, 325 x 315mm (the box)
\$110 – \$210 | 870. Three similar Japanese carved gilt wood Buddhist shrine panels, L. 660mm max
\$100 – \$200 |
| 852. Three Japanese ceramic sake bottles, H. 270mm each
\$70 – \$100 | 861. A Japanese Meiji period lacquered kimono stand, L. 1510mm
\$250 – \$350 | 871. A Meiji period Japanese bronze temple water jar with dragon spout and Buddhist Foo dog finial to the lid, H. 630mm
\$1200 – \$1800 |
| 853. A Japanese <u>Sagejubako</u> (picnic box) the five-tiered black lacquer box with gilt decoration of river landscapes to sides and cover, 435 x 245mm
\$400 – \$600 | 862. Jin Baori kimono
\$200 – \$300 | 872. A Japanese bronze handled vase, with relief panels of shishi amongst flowers, inscription to the base, H. 300mm
\$50 – \$100 |
| 854. A Japanese <u>Sagejubako</u> (picnic box) the four-tiered black lacquer box with gilts decoration of landscapes and flying cranes. Some losses to the lacquer. Complete with original paulowina box
\$150 – \$250 | 863. A Japanese silk kimono, ca. 1960
\$100 – \$200 | 873. A Japanese Usubata Ikebana flower vase, c. 1940's, H. 270mm
\$80 – \$120 |
| 855. A set of Japanese eight black lacquer trays with gilt decoration, 270 x 270mm
\$400 – \$600 | 864. A Japanese 1920's Paulownia cedar kimono chest with copper fittings, H. 1600mm
\$650 – \$850 | 874. A Japanese Usubata Ikebana flower vase, c. 1940's, H. 265mm
\$80 – \$120 |
| 856. A black lacquer <u>bunko</u> (document box) with gilt <u>mon</u> to cover, 725 x 330mm
\$250 – \$350 | 865. A Meiji period Japanese red lacquer double stand decorated in gilt with cranes and floral design, W. 147mm max
\$200 – \$400 | 875. A Japanese Usubata Ikebana flower vase, with silver inlaid decoration of flower design, c. 1940's, H. 265mm
\$120 – \$150 |
| 857. A Japanese black lacquer tray, painted in red and gilt lacquer to the centre with a Ju (longevity) character medallion, signed, L. 315 x H. 220mm, wood box
\$100 – \$200 | 866. A Japanese Meiji period Keyaki wood <u>kyodai</u> (mirrored vanity chest), 810 x 375mm
\$260 – \$360 | 876. A Japanese turquoise glazed bottle vase, first quarter of the 20th Century, H. 255mm
\$100 – \$200
See Anthony J. Allen, 'Allen's Introduction to Later Chinese Porcelain', Auckland, 1996, fig. 78, p. 147 |
| 858. A small Japanese paulowina wood writing box with three drawers, 175 x 140 x 250mm
\$100 – \$200 | 866a. A Japanese Meiji period two piece <u>Kaidan Dansu</u> (step chest) with sliding doors and drawers, H. 2120mm
\$2000 – \$3000 | 877. A Japanese ovoid pottery vase partially covered with white and grey glaze, impressed Shino mark near to base, H. 215mm
\$100 – \$200 |
| | 867. A Japanese solid macassar ebony Buddhist shrine with gilt deity, ca 1960, 1710 x 670 x 580mm
\$500 – \$600 | |
| | 868. A Japanese Tokogawa shrine bell complete with original box
\$1000 – \$1500 | |

Japanese Swords

878. An Edo period (17th/18th Century) Japanese tanto blade with shirasaya mountings, shaped copper habaki, L. 350mm \$800 – \$1200
879. A rare Koto period (15th/16th Century) Japanese armour piercing tanto blade with shirasaya mounting, L. 335mm \$1000 – \$1500
880. A Japanese wakizashi blade with shirasaya mounting, carved silver habaki, L. 620mm \$1800 – \$2000
881. A Japanese wakizashi blade signed Hiroyoshi and dated to the second month of the eighth year of the Tenshou Era (1580), with shirasaya mounting, gilt habaki, L. 425mm \$1500 – \$2500
882. A Taisho period (1912-1926) Japanese wakizashi blade with shirasaya mounting, signed, gilt carved habaki, L. 560mm (excellent polish to blade) \$2000 – \$3000
883. A Japanese wakizashi blade with shirasaya mounting, signed, L. 675mm \$1000 – \$2000
884. A Japanese straight tanto blade with a groove on the back, with shirasaya mounting, the tang with possible later signature and inscription dating to the second month of the second year of the Bunmei era (1470), two-piece habaki, L. 470mm \$800 – \$1200
885. A 17th/18th Century Japanese hand tachi, signed Kaneyuki, with matching fuchi kashira, koiguchi and kojiri with gilt scrolls, iron tsuba with shishi and peony, crane shaped menuki, L. 960mm (good polished blade with very minor flaws) \$2000 – \$3000
886. A Koto period Japanese naginata blade turned into a wakizashi blade with shirasaya mounting, L. 640mm \$1200 – \$1500
887. A 17th Century Japanese wakizashi with matching shakudo nanako fuchi kashira with playing cards, flower shaped menuki, signed tsuba with incised and gilt decoration of birds and trees, silver habaki and seppa, black lacquer scabbard, L. 670mm (good polish to blade) \$2000 – \$2500
888. A late Koto period (16th Century) wakizashi, signed Kiyotsugu from Chosu province, with shakudo nanako fuchi kashira decorated with chrysanthemum and dragon flies, gilt dragon fly shaped menuki, tsuba detailed in gilt with a man amongst waves, black lacquer sheath, L. 635mm \$1500 – \$2000
889. A Shinto period (ca. 1660) Japanese wakazashi, signed 'Soshu ise daijo tsunahiro' 5th generation, with complete fittings comprising matching fuchi kashira and menuki with gold plain shishi, solid gold top plate on kazuka with relief shishi and peony, L. 474mm \$7000 – \$9000
890. A 16th Century Japanese wakizashi, signed, fuchi kashira and menuki detailed in gilt, black lacquer sheath, L. 690mm (the tang has been shorten and polished; the blade is polished but with few flaws) \$2000 – \$2500
891. A rare 18th/19th century Japanese large flat sided wakizashi signed on blade, the fuchi incised with cranes, the menuki of shishi form, black lacquer scabbard with iron kojiri, L. 640mm \$1200 – \$1800
892. A Japanese buke-zukuri katana dated on its certificate to 1789, maker Kanehisa, the tsuba with pierced and carved prunus design, matching shakudo fuchi kashira decorated with samurai in rural setting, black lacquer scabbard with horn fittings, L. 627 mm (blade papered with flaws that show in front of the habaki) \$3750 – \$5500
893. A Japanese katana with iron tsuba decorated with kiku heads, copper habaki carved with birds and prunus sprays, gilt menuki, black lacquer scabbard, L. 730mm \$1200 – \$1800
894. A Late Koto period (16th Century) straight katana with unusually straight two handed handle; pierced iron tsuba with stylized bats and floral design, black lacquer sheath, L. 855mm \$1500 – \$2000
895. A Japanese buke-zukuri katana, iron tsuba with gold and silver inlaid decoration of rodent and turnips, plain shakudo fuchi kashira, garden vegetable shaped menuki finished with gold and silver alloys, solid copper habaki with carved hatched pattern, black lacquer scabbard with buffalo horn fittings, L. 616mm \$4500 – \$6000
896. A c. 1926–1941 Japanese Shin-Gunto katana with regulation army style metal fittings (carved un-pierced gilt brass tsuba, brass fuchi kashira and habaki, steel menuki, steel 1938 pattern scabbard), inscription to tang reading No Shu Ju I Do Hide Toshi Saku Kore (made by Hide Toshi from No Shu), Sho army inspection stamp, L. 658mm \$1800 – \$2500

Kept as souvenir by a Dutch officer while the Dutch Navy were disposing of Japanese weapons after the WWII

897. A Koto period Japanese tachi remounted as katana, matching copper and silver fuchi kashira carved with waves, shell shaped menuki, matching iron and silver kojiri and koiguchi; iron tsuba with gilt inlaid, silver plated habaki, L. 720mm \$1500 – \$2500



914



920



900

889



893

905

891

888

898

890

899

887

885

910



909

911

912



926

922

925

929

929a

930



884

882

881



936



939



974

953



907

908

906



946

898. A Koto period Japanese short katana, signed Kaneyasu from Seki in Noshu (Mino) province, with koshirae mountings, red lacquer scabbard with copper fittings, L. 720mm
\$1200 – \$1500
899. A Japanese tanto with tsuba carved in relief with dragons, shakudo nanako fuchi kashira with relief gilt shishi and bamboo, shishi shaped menuki, black lacquer scabbard worked with wisteria sprays, L. 285mm (possible overlay missing to scabbard decoration, good polish to blade)
\$1500 – \$3000
900. A c. 1860's Japanese tanto with unusual kanmuriotoshi blade, silver inlaid metal fittings and matching kozuka and kogai, black and red lacquer scabbard, L. 390mm
\$4500 – \$6000
901. A Koto period (15th/16th Century) tanto mounted with black lacquer mountings, gilt habaki, ken horimono to both sides of blade, L. 475mm
\$1500 – \$2500
902. A Japanese tanto made from a cut down tachi, with copper and blackened silver fittings, the handle with dragon-carp shaped menuki, the kozuka with figures in relief detailed in copper and gilt, brown lacquer scabbard, L. 565mm
\$1500 – \$2000
903. A Japanese tanto with bone mountings carved with figures on village settings, L. 350mm
\$500 – \$1000
904. A Japanese tanto with black lacquer scabbard, L. 500mm (the blade needs polishing, kogatana and kojiri missing)
\$500 – \$600
905. A 18th/19th Century Japanese tanto with koshirae mountings, signed, fuchi carved with butterflies, kozuka with figural design, mother-of-pearl black lacquer scabbard, L. 350mm
\$800 – \$1200
906. Japanese matching shakudo nanako fuchi kashira and menuki cast in relief with gold chickens and cockerels, signed Yanagawa Naoyoshi with kao, L. 35mm (fuchi), wood box
\$1800 – \$2500
907. A Japanese single shibuichi fuchi with shakudo ants pulling gilt juice drops, signed Yoshi Hoka? Tsuku, L. 35mm
\$150 – \$250
908. Japanese fuchi kashira incised respectively with a tiger and cub and a waterfall landscape, signed Takasei Eijyu, L. 40mm max
\$400 – \$600
909. An Edo period (ca. 1750) Japanese iron sukashi tsuba cast with a pierced leaping horse with bridle, signed Yoshi Haru, L. 70mm, wood box
\$900 – \$1300
910. A Japanese patined copper tsuba decorated with raised relief of a fisherman, the reverse with a carp, detailed in shakudo and gold, signed, H. 60mm, wood box
\$720 – \$820
911. An Edo period (1800s) shakudo sakashi tsuba pierced and carved with two cockerels, H. 60mm, wood box
\$1080 – \$2000
912. An Edo period (1800s) Japanese iron tsuba cast in relief and detailed in shakudo and gold with a cockerel and a chicken before wisteria sprays issuing from a bamboo fence, L. 70mm, wood box
\$720 – \$820
913. A 19th century Japanese seven-sword wooden stand with a draw for fittings, 345 x 300mm
\$300 – \$400
914. A Meiji period Japanese suit of armour
\$2500 – \$3500
915. A Japanese black and gilt lacquer jingasa (samurai hat), D. 400mm (restored)
\$300 – \$400
916. An Edo period (17th/18th Century) Japanese yari spear head with lacquered scabbard, L. 345mm (missing handle)
\$500 – \$600
917. A Japanese naginata (pole arm) with black and gilt lacquer handle and scabbard, H. 2310mm
\$1000 – \$2000
918. A Japanese sodegarami (long pole with many small hooks) with wooden handle, H. 2140mm
\$800 – \$1200
919. An Edo period (18th/19th Century) Japanese small yari (spear) for indoor use, with a mother-of-pearl black lacquer section to handle and black lacquer scabbard, H. 1450mm
\$800 – \$1200
920. A Japanese sodegarami (long pole with many small hooks) with wooden handle, H. 2230mm
\$800 – \$1200
921. An Edo period Japanese long yari (spear) with wooden handle and metal fittings, red paint to blade, H. 2285mm
\$1000 – \$1500
922. A Japanese tobikuchi (spike on wood handle) with rattan binding and re-enforced steel bands, the blade with an incised character, the handle with a black painted inscription, H. 515mm
\$200 – \$300
923. A Meiji period Japanese wooden war hammer, H. 935mm, the hammer W. 285mm
\$500 – \$700
924. A Edo period Japanese wooden war club, H. 1250mm
\$200 – \$400
925. A Japanese hatchet with a hook, mark to blade and handle, H. 450mm
\$100 – \$200
926. A Japanese hatchet adze with lacquered handle, H. 545mm
\$100 – \$200
927. A Japanese battle axe, H. 400mm
\$200 – \$300
928. A 19th century Japanese axe, H. 795mm
\$200 – \$300
929. A Japanese manriki-kusari (lit. ten-thousand power chain), a weighed chain used to disarm criminals, L. 655mm
\$100 – \$200
- 929a. A Japanese tessen (iron fan), used by samurai as self defense weapon, H. 315mm
\$200 – 400
930. A Japanese shakuhachi (bamboo flute), L. 545mm
\$200 – \$300
931. A Late Edo/Early Meiji period Japanese black lacquer quiver containing five arrows, the quiver H. 935mm; the arrows H. 910mm
\$250 – \$350
932. A Meiji period Japanese black lacquer yumi (bow) worked with rattan, H. 2090mm (string missing)
\$300 – \$500
933. A Japanese archery set, comprising a black lacquer double stand with twelve arrows and a wooden double stand with ten arrows, W. 920mm max (lacquer stand) & H. 555mm (arrows)
\$200 – \$300
934. A Japanese wood yumi (bow) with rattan work and string, H. 2160mm
\$500 – \$1000
935. A 19th century Japanese firearm pump, with incised and black painted inscriptions, H. 1440mm
\$200 – \$300
936. Japanese bronze model of a tiger with inset glass eyes, L. 535mm
\$400 – \$600
937. A Japanese wooden rice pounding mallet, H. 900mm
\$80 – \$120
938. A pair of Meiji period ceremonial Taru sake barrels, H. 740mm
\$100 – \$200
939. A rare Japanese large wood jizai kagi (kettle hook hanger), H. 500mm
\$1000 – \$1500
940. A Japanese Meiji period chestnut wood suzuribako (writing box) with writing tools on internal tray, 275 x 210 x 300mm
\$180 – \$280
941. A small Japanese cedar and paulownia wood two drawer box, 175 x 210 x 255mm
\$130 – \$230

942. A Japanese Meiji/Taisho period ebony tray with pierced shaped handles, 165 x 165mm \$50 – \$100
943. A Japanese chestnut and paulownia wood box with a single drawer, 100 x 145 x 270mm \$75 – \$100
944. A Japanese mother of pearl black lacquer stand with scroll end supports, L. 605mm \$150 – \$300
945. A Japanese Meiji period black and gilt lacquer stand with scroll feet, 560 x 325mm \$100 – \$200
946. A Japanese album after Utaga Hiroshige (1797-1858), containing the complete set of the Tokaido Gojusan-tsugi serie ('The Fifty-three Stations of the Tokaido'), printed from original wood blocks, second edition, 1918, with extra prints and a supplement to Life International with an illustrated guide to the series, each leaf: 260 x 380mm \$2000– \$3000
947. An 18th century Japanese pottery wasted cylindrical vase, H. 230mm \$100 – \$200
948. A Japanese crucible pottery vase, H. 270mm \$200 – \$300
949. A Japanese 19th century Seto Yaki bowl covered in a finely crackled light olive glaze, D. 375mm \$100 – \$200
950. A Japanese Bizen wood fired bowl, D. 360mm, wood box \$50 – \$100
951. A late Meiji period food storage pottery jar, H. 260mm \$60 – \$80
952. A Japanese Meiji period Oribe pentagonal vase, signed, H. 245mm, wood box \$400 – \$600
953. A Japanese 19th century Shigaraki mizusashi (water container for tea ceremony), H. 155mm, wood box \$300 – \$600
954. A Japanese Meiji period wood fire pottery chatsubo (tea jar), H. 475mm \$1200 – \$1500
955. A 20th century Japanese glazed Wakayana chatsubo (tea jar), H. 810mm \$400 – \$600
956. A large Japanese Shigaraki chatsubo (tea jar), c. 1930's, H. 570mm \$240 – \$340
957. A large Japanese Shigaraki chatsubo (tea jar), c. 1930's, H. 690mm \$600 – \$800
958. A Japanese Shigaraki chatsubo (tea jar), H. 365mm \$120 – \$150
959. A Japanese chatsubo (tea jar), possible Shigaraki, c. 1930's, H. 175mm \$100 – \$200
960. A large Japanese Shigaraki chatsubo (tea jar), H. 620mm \$250 – \$350
961. A Japanese Raku chawan (tea bowl) with painted decoration on a cream ground, signed, D. 120mm, wood box \$50 – \$100
962. A Japanese Raku chawan (tea bowl), with slip decoration on an orange ground, signed, D. 115mm, wood box \$50 – \$100
963. A Japanese Raku chawan (tea bowl), with painted decoration on an orange ground, signed, D. 120mm, wood box \$50 – \$100
964. A Japanese obsidian glazed bottle vase, c. 1960, H. 320mm \$40 – \$60
965. A large Japanese glazed pottery dish, D. 385mm \$50– \$100
966. A 20th century Japanese takotsubo pottery vase (octopus trap), c. 1950's, H. 240mm \$40 – \$60
967. An Hokkaido hand blown glass float. \$50 – \$100
968. An Hokkaido hand blown glass float. \$50 – \$100
969. An Hokkaido hand blown glass float. \$50 – \$100
970. An Hokkaido hand blown glass float. \$50 – \$100
971. An Hokkaido hand blown glass float. \$50 – \$100
972. An Hokkaido hand blown glass float. \$50 – \$100
973. A Japanese Meiji period papier mache black lacquered lidded box decorated with Samurai warriors \$50 – \$100
974. A Japanese anagama fired stoneware vase, H. 180mm \$200 – \$300
975. A Japanese Buddhist alter shrine box. The interior with a lama holding mala beads seated on a gilt wood throne, H. 220mm \$150 – \$250
976. A Japanese cased carved bone travelling set consisting of a pair of chopsticks and utility knife with attached metal mounts for belt suspension \$100 – \$200
977. A Japanese late Meiji period mirror decorated with a design of cranes, tortoises, bamboo and a pine tree, inscribed with two calligraphic characters representing takasago, the site of a famous pine tree, D. 230mm \$50– \$100
978. A Satsuma coffee set painted with Bijin \$50 – \$100
979. A Satsuma potpourri vase painted with chrysanthemums, birds and bamboo, H. 100mm \$50– \$100
980. Utamaro Ukiyo-e woodblock print, Portrait of a Bijin (beautiful woman), 390 x 270mm \$100 – \$200
981. Utamaro Ukiyo-e woodblock print, Portrait of a Bijin (beautiful woman), 390 x 270mm \$100 – \$200
982. Utamaro Ukiyo-e woodblock print, Portrait of a Bijin (beautiful woman), 390 x 270mm \$100 – \$200
983. Utamaro Ukiyo-e woodblock print, Portrait of a Bijin (beautiful woman), 390 x 270mm \$100 – \$200
984. Utamaro Ukiyo-e woodblock print, Portrait of a Bijin [beautiful woman], 390 x 270mm \$100 – \$200



Chinese & Korean Art

985. An 18th Century Chinese Export mandarin pattern bowl painted in typical style with panels of figures at leisure on river landscapes, D. 293mm (with cracks and later metal band to rim)
\$400 – \$800
986. Four Chinese famille rose bowl decorated with flowering sprays; together with a South-East Asian blue and white dish, D. 203mm max (damages)
\$30 – \$60
987. Two 19th Century Chinese blue and white miniature vases painted with figures in fenced gardens, H. 80mm max (damages)
\$20 – \$40
988. Four similar Chinese blue and white chargers, D. 405mm max
\$100 – \$200
989. Three Chinese Yixing miniature teapots of various shapes, all with marks to base and wood stands, W. 115mm max
\$30 – \$50
990. A Chinese Jin Dynasty-style chicken-head ewer, H. 295mm
\$100 – \$200
991. A Chinese Tang-style handled ewer with shaped rim, H. 295mm
\$100 – \$200
992. A pair of Chinese Tang-style sancai Buddhist lions, H. 240mm
\$250 – \$350
993. A Chinese Song-style double gourd teapot, H. 140mm, wood stand (glaze cracks)
\$50 – \$100
994. A Chinese Song-style 'oil spot' glaze bowl, mark to base, D. 175mm
\$40 – \$80
995. A Chinese Song-style 'hare fur' tea bowl, D. 125mm
\$150 – \$250
996. A Chinese Song-style 'oil spot' bowl, D. 125mm
\$100 – \$200
997. A Chinese Jun-style bowl with typical blue and purple splashes glaze, D. 185mm
\$100 – \$200
998. A Chinese Jun-style censer with upright handles, H. 210mm
\$100 – \$200
999. A Chinese Jun-style pottery figure of Guanyin seated on a high lotus stand, H. 490mm
\$250 – \$350
1000. A Chinese Qingbai-style figure of Guanyin riding an elephant
\$250 – \$350
1001. A Chinese Song-style small celadon vase attached to part of its saggar, H. 178mm max
\$100 – \$200
1002. A Chinese Song-style handled celadon jar attached to part of its saggar, H. 150mm max
\$100 – \$200
1003. A large Chinese Longquan-style celadon tripod censer, D. 300mm
\$150 – \$250
1004. A Chinese Longquan-style blue celadon bottle vase, H. 245mm, wood stand
\$150 – \$250
1005. A Chinese Ming-style celadon and enamel dragon, impressed mark to base, H. 295mm
\$150 – \$250
1006. A large Chinese Longquan-style celadon jar with dragon biscuit decoration, H. 370mm
\$250 – \$350
1007. A Chinese Cizhou-style bowl painted with a scholar fishing on a river bank, D. 330mm
\$100 – \$200
1008. A Chinese Cizhou-style rectangular pillow with sgraffiato decoration of peony scrolls, L. 480mm
\$150 – \$250
1009. A Chinese Cizhou-style baluster vase with sgraffiato decoration of peony scrolls, mark to base, H. 378mm (minor flake chip to base)
\$150 – \$250
1010. A Chinese Cizhou-style meiping dragon vase, H. 320mm
\$150 – \$250
1011. A Korean grey celadon meiping vase with white and grey slip decoration of cranes, H. 410mm
\$150 – \$250
1012. A Korean meiping vase with white slip decoration of cranes, mark to base, H. 310mm
\$100 – \$200
1013. A Chinese archaistic bronze vase with stylised dragon design, H. 160mm
\$50 – \$100
1014. A 19th Century Chinese bronze stirrups with dragon design, H. 170mm
\$250 – \$350
1015. A 20th Century Chinese bronze group of a child playing a flute riding an ox, H. 230mm
\$80 – \$120
1016. A Chinese agate pig-dragon pendent, H. 30mm
\$25 – \$50
1017. A Chinese archaistic spinach jade ceremonial axe, L. 780mm
\$25 – \$50
1018. A Chinese archaistic celadon jade ceremonial axe, carved with dragons and taotie masks, H. 283mm
\$100 – \$200
1019. A Chinese archaic jade axe
\$100 – \$200
1020. A Chinese archaistic jade sword fitting carved with a coiled dragon, L. 70mm (partially altered jade)
\$25 – \$50
1021. A Chinese archaistic celadon jade finial incised with a taotie mask, H. 460mm
\$100 – \$200
1022. A Chinese archaistic jade carving with dragon and bird finials, H. 290mm (partially altered jade)
\$150 – \$250
1023. A Chinese archaistic celadon jade pendant formed by a c-shape section on a pointed end, H. 850mm
\$25 – \$50
1024. A Chinese jade Buddhist lion
\$200 – \$300
1025. A Chinese archaistic jade model of a camel, H. 170mm (partially altered jade)
\$175 – \$275
1026. A Chinese archaistic jade carving of a figure, H. 200mm (partially altered jade)
\$500 – \$600
1027. A Chinese jasper scholar rock, W. 360mm, wood stand
\$200 – \$300
1028. A fossilized wood piece, H. 410mm, wood stand
\$130 – \$230
1029. A Chinese root wood stand of twisted and entwined form, H. 325mm
\$200 – \$300





Tibetan Art

1030. A good Chinese Beijing Opera cream silk robe embroidered with dragon roundels
\$250 – \$350
1031. A Chinese rosewood calligraphy box, 230 x 160mm
\$40 – \$60
1032. A small Chinese hardwood cabinet, 485 x 380mm
\$80 – \$120
1033. An early 20th Century elm and hardwood Chinese Buddhist altar, decorated with carved panels, the internal doors painted with peony sprays, 700 x 500mm
\$350 – \$500
1034. A Chinese wooden Buddha figure, H. 335mm, wood stand (hands missing and heavy wear)
\$50 – \$100
1035. A small 20th Century Chinese painted lacquered low table, 530 x 295mm
\$80 – \$120
1036. A Chinese hardwood low table with carved top and lion paw feet, 900 x 1500mm
\$250 – \$350
1037. A 20th Century Chinese hardwood low table, the aprons with pierced flower scrolls, 900 x 1500mm
\$250 – \$350
1038. A Chinese Ming Dynasty style Buddha's head mounted in a fitted ebonised plinth, H. 220mm
\$500 – \$1000
1039. A decorative wall mirror with leather frame painted with chinoiserie decoration, 1060 x 620mm
\$350 – \$500
1040. A 19th century polychrome painted Chinese figure, H. 350mm
\$200 – \$300
1041. A Chinese red lacquer document box, W. 420mm
\$80 – \$120
1042. A large and impressive Tibetan Gelukpa school Thangka. The Thangka painted on linen with figures of Amitayus, the Buddha of long life, Manjushri, the Buddha of wisdom, White Tara, the female Bodhisattva associated with compassion and long life and Shakyamuni Buddha, the historical Buddha in Vajrayana (Tantric) form framed by three manifestations of Vajrapani in wrathful protector form. The foreground painted with numerous smaller Buddha and Bodhisattva figures including Lama Tsongkhapa, the founder of the Gelukpa school, L. 3000mm
\$1500 – \$2500
1043. A modern Tibetan style Thangka painted with the Buddha of compassion Avalokiteshvara, 580 x 400mm
\$100 – \$200
1044. A pair of 19th century decoratively painted Tibetan bowls
\$100 – \$200
1045. A Tibetan coffer painted with a dragon design, 19th century and later, W. 800mm
\$500 – \$800



1047

South-East Asian Art

1046. A large Burmese bronze Buddha, seated on a double lotus throne in dhyanasana, his hands in bhumisparsha mudra, wearing plain robes, his face with typical serene expression, H. 1000 (the bronze with a verdigris patina)
\$3000 – \$4000
1047. A c. 1930 large Burmese lost wax bronze temple bell, cast in relief with gilt figural panels underneath borders of lappets and flower scrolls, the fixed hook flanked by Buddhist lions, the sectional suspension stirrup hook with guardian figures and elephant finial, the bell H. 800mm, the hook H. 570mm
\$1500 – 2500
1048. A Burmese bronze 19th century opium weight shaped as a mythological bird, H. 175mm
\$160 – \$260
1049. A South-East Asian bronze deity, H. 195mm (heavy verdigris and few losses)
\$80 – \$120
1050. A bronze figure of the Hindu goddess Lakshmi, together with a bronze figure of the Hindu deity Hanuman and another deity figure, H. 120mm & H. 93mm
\$150 – \$250
1051. An Indian wooden panel carved in relief with human figures, framed in later Japanese teak, L. 255 x H. 300mm including the frame
\$100 – \$200
1052. A South-East Asian black pottery jar with ribbed shoulder, H. 145mm
\$50 – \$100
1053. A 16th century Sukhothai celadon glazed vase of ovoid shape with cylindrical neck incised with concentric bands, H. 220mm
\$100 – \$200
1054. A 19th century Thai Bronze Buddha figure seated with his hands in Bhumisparsha (earth touching) mudra, H. 180mm
\$80 – \$140



1065



1072



Other Bladed weapons and Militaria from the collection of Harry Pappafloratos

- 1055. A 19th Century Moghul Persia dagger with jade horse handle and gold koftgari cartouche on peshkaba shaped blade, L. 435mm
\$1250 – \$1750
- 1056. A 18th/19th Century Indo-Persian rare straight bladed sword with a gold koftgari cartouche on blade, refurbished scabbard, L. 1010mm
\$1500 – \$2000
- 1057. A c. 1650's Italian steel stiletto, H. 210mm
\$2000 – \$4000
- 1058. A 15th/16th Century north Italian large stiletto, H. 440mm
\$2000 – \$4000
- 1059. An Italian Sardo-Genovese coltello da caccia dagger with incised scroll work to blade, L. 310mm
\$500 – \$800

- 1060. Spanish swept hilt rapier with fire wire board grip and large ball shaped pommel, H. 1180mm
\$4000 – \$6000
Purchased from Wallace Walker in 1990
- 1061. A c. 1600 German left handed parrying dagger, inscription incised to both sides of the blade: 'In Domino Confido', H. 405 mm
\$2000 – \$4000
- 1062. A 17th/18th century French left handed dagger with silver nails on grip and floral incisions on blade, with red leather scabbard, L. 430mm
\$1500 – \$2000
- 1063. A 19th century American gauche bowie knife with carved nickel and silver handle, French made blade with 'Dufour' impressed mark, L. 370mm
\$400 – \$800
- 1064. A 19th Century British boot knife, with 'Southern & Richardson Sheffield's' mark on blade, L. 250mm
\$400 – \$600
- 1065. A jewelers replica 9ct gold miniature Victoria cross, H. 18mm
\$1000 – \$2000
Purchased from CJ & AJ Dixon Ltd Military medalists (UK) ca. 30 years ago
- 1066. A W.W.I British tank cap badge, L. 80mm
\$100 – \$200

- 1067. A 'Long Range Desert Group' (rats) cap badge war, D. 32mm & another one
\$100 – \$200
- 1068. A 'Death or Glory' skull badge (17th lances), H. 47mm
\$100 – \$200
- 1069. Three 105th regiment standard Napoleon eagle cap badges, H. 450mm max
\$100 – \$200
- 1070. A W.W.I German imperial tank badge, H. 70mm
\$500 – \$1000
- 1071. A sterling silver Royal Flying Corps (RFC) services dress pilot's badge Marks for Birmingham 1914
\$250 – \$500
- 1072. An Early 19th century John Blissett Six-Shot Percussion Pepperbox revolver 6-shot fluted barrel with sight marks and numbered barrels, finely engraved silver plate metal mounts on plain walnut grip with inscribed to one side 'John Blissett 321 High Holborn London', to the other 'Improved Revolving Pistol'. Mahogany case with Blissett label and fitted with two ivory topped pots, cleaning brush, oil bottle, replacement bullet mould, shot, nipple key, two spare nipples and percussion cap tin, the pistol L. 220 mm overall
\$4000 – \$6000

Conditions of sale

Please note: it is assumed that all bidders at auction have read and agreed to the conditions described on this page.
ART+OBJECT directors are available during the auction viewing to clarify any questions you may have.

1.

Registration: Only registered bidders may bid at auction. You are required to complete a bidding card or absentee bidding form prior to the auction giving your correct name, address and telephone contact + supplementary information such as email addresses that you may wish to supply to ART+OBJECT

2.

Bidding: The highest bidder will be the purchaser subject to the auctioneer accepting the winning bid and any vendor's reserve having been reached. The auctioneer has the right to refuse any bid. If this takes place or in the event of a dispute the auctioneer may call for bids at the previous lowest bid and proceed from this point. Bids advance at sums decreed by the auctioneer unless signaled otherwise by the auctioneer. No bids may be retracted. The auctioneer retains the right to bid on behalf of the vendor up to the reserve figure.

3.

Reserve: Lots are offered and sold subject to the vendor's reserve price being met.

4.

Lots offered and sold as described and viewed: ART+OBJECT makes all attempts to accurately describe and catalogue lots offered for sale. Notwithstanding this neither the vendor nor ART+OBJECT accepts any liability for errors of description or faults and imperfections whether described in writing or verbally. This applies to questions of authenticity and quality of the item. Buyers are deemed to have inspected the item thoroughly and proceed on their own judgment. The act of bidding is agreed by the buyer to be an indication that they are satisfied on all counts regarding condition and authenticity.

5.

Buyers premium: The purchaser by bidding acknowledges their acceptance of a buyers premium of 15% + GST on the premium to be added to the hammer price in the event of a successful sale at auction.

6.

ART+OBJECT is an agent for a vendor: A+O has the right to conduct the sale of an item on behalf of a vendor. This may include withdrawing an item from sale for any reason.

7.

Payment: Successful bidders are required to make full payment immediately post sale – being either the day of the sale or the following day. If for any reason payment is delayed then a 20% deposit is required immediately and the balance to 100% required within 3 working days of the sale date. Payment can be made by Eftpos, bank cheque or cash. Cheques must be cleared before items are available for collection. Credit cards are not accepted.

8.

Failure to make payment: If a purchaser fails to make payment as outlined in point 7 above ART+OBJECT may without any advice to the purchaser exercise its right to: a) rescind or stop the sale, b) re offer the lot for sale to an underbidder or at auction. ART+OBJECT reserves the right to pursue the purchaser for any difference in sale proceeds if this course of action is chosen, c) to pursue legal remedy for breach of contract.

9.

Collection of goods: Purchased items are to be removed from ART+OBJECT premises immediately after payment or clearance of cheques. Absentee bidders must make provision for the uplifting of purchased items (see instructions on the facing page)

10.

Bidders obligations: The act of bidding means all bidders acknowledge that they are personally responsible for payment if they are the successful bidder. This includes all registered absentee or telephone bidders. Bidders acting as an agent for a third party must obtain written authority from ART+OBJECT and provide written instructions from any represented party and their express commitment to pay all funds relating to a successful bid by their nominated agent.

11.

Bids under reserve & highest subject bids: When the highest bid is below the vendor's reserve this work may be announced by the auctioneer as sold 'subject to vendor's authority' or some similar phrase. The effect of this announcement is to signify that the highest bidder will be the purchaser at the bid price if the vendor accepts this price. If this highest bid is accepted then the purchaser has entered a contract to purchase the item at the bid price plus any relevant buyers premium.

Important advice for buyers

The following information does not form part of the conditions of sale, however buyers, particularly first time bidders are recommended to read these notes.

A.

Bidding at auction: Please ensure your instructions to the auctioneer are clear and easily understood. It is well to understand that during a busy sale with multiple bidders the auctioneer may not be able to see all bids at all times. It is recommended that you raise your bidding number clearly and without hesitation. If your bid is made in error or you have misunderstood the bidding level please advise the auctioneer immediately of your error – prior to the hammer falling. Please note that if you have made a bid and the hammer has fallen and you are the highest bidder you have entered a binding contract to purchase an item at the bid price. New bidders in particular are advised to make themselves known to the sale auctioneer who will assist you with any questions about the conduct of the auction.

B.

Absentee bidding: ART+OBJECT welcomes absentee bids once the necessary authority has been completed and lodged with ART+OBJECT. A+O will do all it can to ensure bids are lodged on your behalf but accepts no liability for failure to carry out these bids. See the Absentee bidding form in this catalogue for information on lodging absentee bids. These are accepted up to 2 hours prior to the published auction commencement.

C.

Telephone bids: The same conditions apply to telephone bids. It is highly preferable to bid over a landline as the vagaries of cellphone connections may result in disappointment. You will be telephoned prior to your indicated lot arising in the catalogue order. If the phone is engaged or connection impossible the sale will proceed without your bidding. At times during an auction the bidding can be frenetic so you need to be sure you give clear instructions to the person executing your bids. The auctioneer will endeavour to cater to the requirements of phone bidders but cannot wait for a phone bid so your prompt participation is requested.

D.

New Zealand dollars: All estimates in this catalogue are in New Zealand dollars. The amount to be paid by successful bidders on the payment date is the New Zealand dollar amount stated on the purchaser invoice. Exchange rate variations are at the risk of the purchaser.

Absentee bid form

AUCTION NO 41

New Collectors Art
1 March 2011

**The Douglas Lloyd Jenkins
Collection & Decorative Arts**
2 March 2011

**The Arts of the Samurai &
Oceanic Artefacts**
3 March 2011

This completed and signed form authorizes ART+OBJECT to bid on my behalf at the above mentioned auction for the following lots up to prices indicated below. These bids are to be executed at the lowest price levels possible. I understand that if successful I will purchase the lot or

lots at or below the prices listed on this form and the listed buyers premium for this sale (15%) and GST on the buyers premium. I warrant also that I have read and understood and agree to comply with the conditions of sale as printed in the catalogue.

Lot no.	Description	Bid maximum (New Zealand dollars)
_____	_____	_____
_____	_____	_____
_____	_____	_____
_____	_____	_____
_____	_____	_____
_____	_____	_____
_____	_____	_____
_____	_____	_____
_____	_____	_____
_____	_____	_____
_____	_____	_____
_____	_____	_____
_____	_____	_____
_____	_____	_____

Payment and Delivery ART+OBJECT will advise me as soon as is practical that I am the successful bidder of the lot or lots described above. I agree to pay immediately on receipt of this advice. Payment will be by cash, cheque or bank transfer. I understand that cheques will need to be cleared before goods can be uplifted or dispatched. I will arrange for collection or dispatch of my purchases. If ART+OBJECT is instructed by me to arrange for packing and dispatch of goods I agree to pay any costs incurred by ART+OBJECT. Note: ART+OBJECT requests that these arrangements are made prior to the auction date to ensure prompt delivery processing.

Please indicate as appropriate by ticking the box:

☐ PHONE BID

☐ ABSENTEE BID

MR/MRS/MS: _____

SURNAME: _____

POSTAL ADDRESS: _____

STREET ADDRESS: _____

BUSINESS PHONE: _____

MOBILE: _____

FAX: _____

EMAIL: _____

Signed as agreed: _____

To register for Absentee bidding this form must be lodged with ART+OBJECT by 2pm on the day of the published sale time in one of three ways:

1. Fax this completed form to ART+OBJECT +64 9 354 4645
2. Email a printed, signed and scanned form to: info@artandobject.co.nz
3. Post to ART+OBJECT, PO Box 68 - 345 Newton, Auckland 1145, New Zealand

ART+OBJECT 3 Abbey Street, Newton, Auckland, New Zealand. Telephone +64 9 354 4646, Freephone 0800 80 60 01

New Collectors Art Artists Index

- Albrecht, Gretchen 141, 142, 165
 Baloghy, George 74
 Barker, David 154
 Binding, Wellesley 48, 49
 Boroughs, Justin 177, 178
 Braunias, Mark 45
 Brookes, Maurice 225
 Brown, Nigel 116
 Bryant, Michele 30
 Buchanan, Dean 223, 224
 Buckland Wright, John 204
 Burnett, Tom 70, 71
 Bustin, Debra 61
 Cane, Chris 26, 27
 Chance, George 31, 32, 33, 34
 Chapman, Paul 58
 Chilcott, Gavin 2, 19, 21, 22, 28, 35, 43, 44
 Clark, Nobby 232
 Cleavin, Barry 75, 98, 99, 102
 Cliarmont, Philip 150, 219
 Cole, Ruth 129
 Cotton, Shane 163, 164
 Crook, Gordon 209
 Dalgarno, Roy 101
 Dashper, Julian 89
 Dibble, Paul 97
 Driver, Don 91.1
 Elliott, Thomas 107
 Ellis, Meighan 54
 Ellis, Robert 183
 Esplin, Tom 195
 et al. 78
 Feu'u, Fatu 222
 Fong, Luise 186
 Frizzell, Dick 64, 65
 George, Darryn 118, 119, 120
 Gibson-Smith, Peter 37
 Gimblett, Max 81, 87
 Good, Roy 79
 Gopas, Rudolf 169
 Graham, Barbara 57
 Greig, Jason 174, 175, 176
 Hackett, Peter 140
 Haffern, Gail 155
 Hammond, Bill and Chilcott, Gavin 3, 4, 5
 Hammond, Bill 51
 Hanly, Pat 143, 208
 Harris, Jeffrey 6, 66, 149, 159, 160, 173
 Hartigan, Paul 182
 Heaphy, Chris 41
 Helmore, Des 47
 Hemer, Andre 90, 91
 Henderson, Louise 185
 Honour, Basil 170
 Hotere, Ralph 151, 152, 180
 Huddleston, W. 130
 Hughes, Sara 83
 Humphries, Clive 60
 Hurley, Gavin 148
 Illingworth, Michael 146
 Jansen, Monique 53
 Karaka, Emily 171
 Killeen, Richard 114
 Knight-Turner, Dennis 145
 Lane, Tony 38, 46, 55
 Lanting, Hans 194
 Larkin, Peata 121
 Lee-Johnson, Eric 230
 Lloyd, Trevor 210
 Maddox, Allen 50
 Matheson, Clare 86
 Maughan, Karl 85
 McCormack, Thomas Arthur 211, 213, 214
 McIvor, Lois 158
 McLeod, Rob 199
 McPhee, Charles 123, 124, 125, 126
 McWhannell, Richard 94, 216
 Millar, Judy 82
 Miró, Joan 36
 Mitchell, Smantha 167, 205
 Moffitt, Trevor 108, 109
 Moon, Nic 207
 Moore, Henry 220
 Muir, Janet 192
 Murado, Antonio 42
 Noble, Anne 189
 Page, Dugald 212, 228, 229
 Palmer, Stanley 73, 110, 157, 179, 197
 Parekowhai, Michael 92
 Pearson, Robert 17
 Peryer, Peter 7, 8, 9, 10, 11, 12, 14, 190
 Pick, Seraphine 88
 Pickmere, Alison 134
 Pieters, K. F 56
 Popplewell, Martin 233
 Pule, John 103, 112, 113, 187, 193
 Ramage, Don 231
 Ransom, Peter 72
 Rastorfer, Lorraine 184
 Reed, Bill 188
 Reynolds, John 172, 196
 Ritchie, June 77
 Robinson, Ann 95
 Robinson, James 80, 201
 Sameshima, Haru 16
 Sarich, David 153
 Schoon, Theo 122
 Scott, Ian 84, 147
 Shannon, Marie 1
 Sheppard, Carole 62, 67
 Shotton Parker, John 181
 Siddell, Peter 128
 Siddell, Sylvia 138.1
 Siebert, Mark 217, 218
 Smither, Michael 59, 63, 69, 127, 226
 Southon, Zarahn 202, 203
 Spencer-Bower, Olivia 215
 Stewart, Helen 161
 Stichbury, Peter 96
 Stringer, Terry 93, 104
 Tapper, Garth 111, 168
 Thompson, Arthur 227
 Tootill, Jon 132
 Tricker, Gary 100
 Tuck, Barbara 156
 Tweedie, Merylyn 15, 52, 191, 206
 van Hout, Ronnie 13
 Walsh, Alfred 105
 Walters, Gordon 115, 162
 Watson, Ruth 18, 39, 40
 Webb, Marilyn 68, 76, 200
 Wheeler, Pete 106
 White, A. Lois 144
 White, Robin 135, 136, 137, 138
 Williams, Fred 221
 Winkelmann, Henry 133
 Wong, Sing Tai 139
 Woods, George 198
 Woollaston, Toss 117, 166

Illustrated: lot 560 (Bob Roukema ply armchair), lot 550 (John Chrichton charger), lot 799 (1950's planter), lot 604 ('Maori Legend' wool-pile rug).



New Collectors Art

Tuesday 1 March at 6.00pm

The Douglas Lloyd Jenkins Collection of Modern Design and Decorator items

Wednesday 2 March at 5.30pm

The Arts of the Samurai from the collection of Harry Pappafloratos Asian Art

Oceanic Art from a Private Collection

Thursday 3 March at 6.30pm