

An aerial photograph showing a vast flock of sheep grazing on a lush green, rolling hillside. The sheep are densely packed in some areas and more sparse in others, creating a textured pattern of white and light brown against the vibrant green grass. The perspective is from a high angle, looking down on the landscape.

ART OBJECT

Important Modern
+ Contemporary
Photographs

Auction Thursday 19 July 2007

20th Century Design

Auction Saturday 28 July 2007



ART OBJECT

THE 21st CENTURY
AUCTION HOUSE

3 Abbey Street, Newton
PO Box 68 345, Newton
Auckland 1145, New Zealand
Phone +64 9 354 4646
Freephone 0800 80 60 01
Facsimile +64 9 354 4645
info@artandobject.co.nz
www.artandobject.co.nz

Important Modern + Contemporary Photographs

Thursday 19 July at 6.30 pm

20th Century Design

Saturday 28 July at 4 pm

3 Abbey Street, Newton, Auckland



(cover)

Jae Hoon Lee

A New Farm

(Lot 7, Photography Catalogue)



(opposite)

Peter Young

sideboard in American Black Walnut

(Lot 22, 20th Century Design Catalogue)



(back cover)

Michael Parekowhai

Messines

(Lot 42, Photography Catalogue)



Pre-European hei tiki (i)



Dick Frizzell (ii)
The Metaphysical Cheese



Gordon Walters (iii)
Study for Auckland City Art Gallery Poster



Bill Hammond (iv)
Sing Writer



Milan Mrkusich (v)
Painting Dark III

Recent ART+OBJECT Auction Highlights

In May and June A+O held two diverse auctions, both of which demonstrated the breadth of interest held by the New Zealand collector and which reinforced the current trends of the local marketplace, namely caution at the upper end but growing demand for work under \$50 000 and strong demand for New Zealand artefacts.

The OMNI auction of May 26th was in many ways a more traditional antiques and decorative arts auction with a number of strong sections including New Zealand artefacts which are increasingly sought after and more elegant and esoteric decorative items such as Moorcroft ceramics and Lalique glass which fetched strong prices. In a 400 lot sale it is difficult to pick one highlight but a particular favourite in the viewing was the pre-European Auhunga variety Pounamu *hei tiki* (i above) which sold for \$7000. Top price in the Taonga Tuturu section went for a splendid stone carved waka huia which was the subject of strong competition, ultimately selling for \$31 000.

June 14 was the date of A+O's first major art auction to date, the MASTERPIECE Auction. The catalogue contained major works by many of New Zealand's most acclaimed artists. There was much cause for celebration when A+O recorded its first ever six figure sale when it set a new auction record for Milan Mrkusich's magnificent 1971 canvas *Painting Dark III* (v above)

Other sale highlights included Dick Frizzell's *The Metaphysical Cheese* (ii above) which sold for \$29 000 and Bill Hammond's large work on paper *Sing Writer* which fetched \$80 000 (iv above). Ann Robinson's signature cast glass work continues to sell well at auction and the brilliant *Te Rito Pod Bowl of 2004* surpassed the Nikau Vase sold in A+O's launch auction, selling for \$31 000.

A number of important sales were negotiated post auction including Gordon Walters *Study for Auckland City Art Gallery Poster* (iii above) which sold to a delighted expatriate New Zealander for \$50 000.

A+O video viewing Thanks to all our clients who were so vociferous in their support for ART+OBJECT's first video viewing of the Masterpiece auction (If you have not seen this yet log onto www.artantobject.com and click to the auction section and go to previous auctions/ June 14 Masterpiece auction to view **video**) The feedback was instant and positive. We will be producing video previews for all of our major auctions in the future.

Finally, another thank you goes to all those who braved a wet Saturday afternoon in late June to come and bid so enthusiastically for the 36 artworks auctioned for Riduan Tomkins. Just over \$50 000 was raised to support the artist, every single work sold and many excellent prices were achieved.

Note: All prices quoted above are hammer prices only and do not include buyer's premium of 12.5% + GST



State of the art.

Inspiration, innovation and dedication lead to the creation of the world's most beautiful cars.

Experience the ultimate expression of form and function for yourself at Giltrap Prestige.

Giltrap

Prestige

100 & 120 Great North Rd, Auckland. Phone 360 3200. www.giltrap.co.nz

The
Bev & Murray Gow
Collection

Saturday 15 September

ART+OBJECT is delighted to announce that it has been favoured with instruction to sell the Bev and Murray Gow Collection. Comprising of some 300 high quality paintings, prints and photographs from the mid Nineteenth Century to the late Twentieth Century, procured from their time as Directors of John Leech Gallery, Auckland's longest-standing private gallery. Due to the impending sale of the John Leech art storage warehouse, these paintings must be sold and the vast majority will be offered without reserve. This auction and catalogue will constitute one of the most interesting, diverse and important private collections to come onto the New Zealand market in recent years.

Major General

Horatio Gordon Robley

Te Kuha (detail)

watercolour

250 x 225mm

\$6000 - \$9000





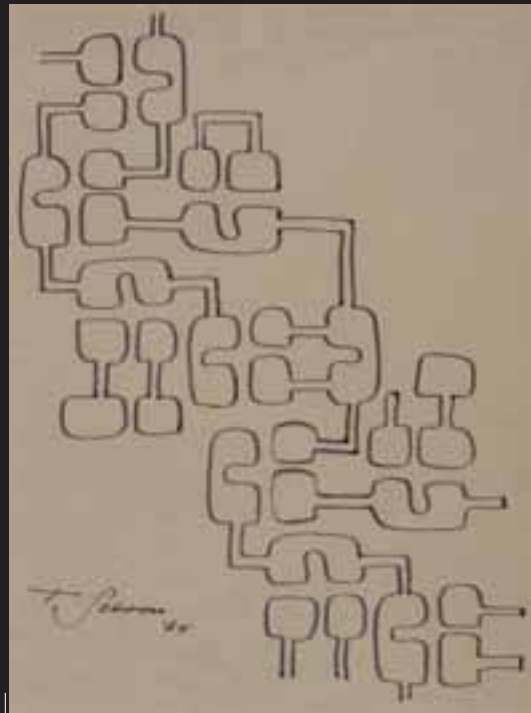
Artist Unknown

Sketch of Chief Kawiti's Pa, Ruapekapeka

245 x 260mm: drawing

195 x 245mm: print

\$1500 - \$2500



Theo Schoon

Abstract Study

ink on paper

285 x 212mm

\$1000 - \$2000



Louise Henderson

The Swimmer

oil on canvas, circa 1960

650 x 1025mm

\$15 000 - \$25 000



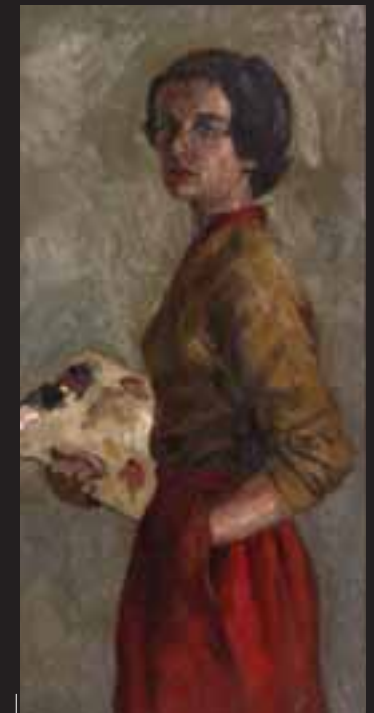
Jeffrey Harris

Figures in an Interior

oil on board

1185 x 1490mm

\$12 000 - \$18 000



Jacqueline Fahey

Self-Portrait with Artist's Palette

oil on board

900 x 435mm

\$5000 - \$8000



ARANDO TESTA

Michael, Eva and Asia Chow.
Knightsbridge London, may 2006.

Kennedee sofa,
Jean-Marie Massaud 2006.
Poltrona Frau Collection.

www.poltronafrau.it



Georgi Gregg
HOME

80 Parnell Road, Parnell, Auckland, New Zealand
T +64 9 368 7777 F +64 9 368 7771
info@georgigregghome.com



Contemporary Art 4 October 2007

A+O will present a catalogue of the highest quality, with industry leading photographic treatment and thoughtful essays by leading art writers on key works.

Already consigned are major works by Bill Hammond, Richard Killeen, Seung yul Oh, Seraphine Pick, John Pule, Michael Stevenson and Reuben Paterson.

To discuss including a contemporary artwork in the auction please contact Ben Plumbly
ben@artandobject.co.nz
tel 09 354 4646
mob 021 2228183.



Reuben Paterson

*Ngati Rangitahi on Ngati Awa
land, good ol' Matata (Detail)*
acrylic and glitter dust
on canvas, 2002
1220 x 1220mm
\$12 000 - \$18 000

maven



Objects

4 October 2007

The success of A+O's inaugural Object auction has resulted in an array of fine items being consigned for the October 4 Object auction including signature works by Frank Carpay, Denis O'Connor, Robyn Stewart, Len Castle, Emma Camden, Emily Siddell and Ann Robinson.

To include an object item in this important auction contact Ross Millar
ross@artandobject.co.nz
tel 09 354 4646
mob 021 222 8185



Emily Siddell

Midnight Lei

fused and cast glass with
hand-fired ceramics

2002

\$6000 - \$8000



MYSTIC TRUTHS

30 JUNE TO 14 OCTOBER 2007

AUCKLAND ART GALLERY TOI O TĀMAKI
NEW GALLERY CNR WELLESLEY & LORNE STREETS

BRUCE NAUMAN *Window or Wall Sign* 1967
© Bruce Nauman, licensed by VISCOPY Australia
2007 Collection of National Gallery of Australia,
Canberra, purchased 1978, courtesy of the artist
and National Gallery of Australia, Canberra

www.aucklandartgallery.govt.nz





Copeland Parianware

bust of a maiden

Impressed manufacturers
mark c.1855

\$3000 - \$4000

OMNI

10 November 2007

A+O is pleased to announce a significant antiques and decorative arts auction consisting of a large and varied selection of items from the estate of Colin Manson. The collection features over one hundred and twenty pieces including a pair of 19th century French gesso Moorish figures, a collection of 19th century Italian marble busts, a 17th century continental sideboard, art deco figure groups, a collection of Moorcroft pottery, a Meiji period Japanese tansu, alabaster figures, a large Victorian bronze figure group, a collection of over 30 pieces of Sterling silver, Japanese ivory okimono and netsuke and a large offering of Waterford crystal.

In addition the Omni catalogue will include over 40 examples of Royal Worcester including handpainted vases, 2 museum quality vases and a collection of 20 Doris Linder animals and a diverse offering of arts and crafts and art nouveau ceramics. A+O is also pleased to announce a special section of the catalogue will be devoted to New Zealand colonial furniture with highlights including a desirable Anton Seuffert side table in inlaid New Zealand timbers, a William Norrie inlaid miniature cabinet chest, a collection of gloveboxes and solid mottled kauri chests of drawers.

Entries for the November Omni catalogue are invited. For further information contact Ross Millar ross@artandobject.co.nz
tel 64 9 354 4646
mob 021 222 8185
or James Parkinson on james@artandobject.co.nz
tel 64 9 354 46 46
mob 021 222 8184

Modern and Contemporary Photographs

Modernism in New Zealand and international painting is well discussed and defined. In photography the story is only beginning to unfold in this country. For many it starts as it does in this catalogue: with the soft-focus Pictorialism of George Chance. Pictorialism initially surfaced in the late nineteenth century in response to the marketing of cheap cameras and the resultant ubiquity of the medium. Its proponents used craftsmanship to counter the perception that photography was an entirely mechanical medium. Chance's rural scenes feel centuries old, immersed and enshrouded as they are in a soft haze - a technical feat gained through exposing the image through a screen and through hand-touching of the negative. In carefully composed photographs such as *Beside Lake Hawea* there is as clear a desire to locate and articulate a 'home' in the New Zealand landscape as there is in Nationalist painting icons such as *Cass*.

Frank Hofmann was born in Prague in 1916 and emigrated to New Zealand in 1940. He brought with him from Europe a more radical photographic Modernism which although often focusing on the mundane and utile, used high vantage points and oblique angles to emphasize the abstract. Works such as *The Musician* and *Constructivist Composition with Violin* recall the work of European vanguard photographers Man Ray and Lazlo Moholy-Nagy in their preoccupation with form, space and illusion.

Another artist responsible for bringing the Modern to these shores was Theo Schoon who perhaps did the most to marry Modernism to a local and more specifically indigenous context. His photographs of the geothermal activity in and around Rotorua are among his most significant contribution. The artist spent years recording the effects of light, colour and texture on mud pools. Photographs such as the beautiful cibachrome *Waiotapu Mud Pool Study*, demonstrate beautifully the artist's extraordinary eye for detail, texture and design.



57

57. George Chance
Beside Lake Hawea
gelatin silver print
title inscribed and signed
230 x 277mm
\$600 - \$1000



55. Frank Hofmann
Constructivist Composition with Cello
vintage gelatin silver print
253 x 200mm
Provenance: from the collection
of the artist's estate
\$3000 - \$5000

If these three seminal figures between them do much to announce and encapsulate the Modern in New Zealand photography, then Christine Webster's works from the 1980s do much to signal the arrival of postmodernism in this country with their emphasis on performance, roll-playing, theatre and identity politics. The *Black Carnival* series is perhaps Webster's most ambitious and impressive body of work. Conceived as a complete photographic environment in which the viewer is confronted with a 360 degree immersive experience, the exhibition toured the country to both great acclaim and controversy. The giant *Untitled (Black Carnival)* was the poster image for the touring exhibition and showed that with recent technological advancements photography could now compete with the size, impact and physicality of painting.

Ava Seymour's *Health, Happiness and Housing* series was another body of work to provoke controversy and to continue contemporary photography's engagement with narrative and social commentary/critique. Taken on a trip from Invercargill to Auckland which the artist embarked on in 1996 armed with a small automatic Olympus camera, the photographs incorporate the use of collage with the clusters of state housing which Seymour encountered on her travels. The conflation of ungainly genetic hybrids with the utopian/dystopian New Zealand State housing project begun in 1937 was perhaps always going to incite debate even if the artist's intent was more grounded in the formal than the social.

33. Theo Schoon

Waiotapu Mud Pool Study

unique cibachrome photograph originally taken in 1967 and later printed in 1982 by Schoon and John Perry from the ektachrome transparency
460 x 470mm

Provenance: Purchased by the current owner from John Leech Gallery, March 2002
: Private collection, America

\$4000 - \$6000



33



17

17. Christine Webster

Black Carnival

cibachrome photographic print

title inscribed, signed and dated 1992/93 verso
2700 x 1200mm

Provenance: from the collection of Dunedin
curator and art historian, Peter Entwisle

\$6000 - \$9000

Something dark has always lurked beneath the surface of Gavin Hipkins' photographs. Working in distinct series, *The Village* series witnessed the artist stalking out emblems of identity and juxtaposing them with swathes or blocks of colour. In *The Village (Train)*, the Kingston Flyer which carries tourists on scenic tours near Queenstown and which in a previous life appeared in the Crunchie Bar advertisements, meets three of the artist's distended and eerie signature hoods. This is photography more comfortable alongside the mass media advertising imagery of a billboard than the small black and white silver gelatin prints of the artist's predecessors.

It can't be long now before the history of photography in this country is written into and incorporated within the broader art history of our country. Hopefully the inaugural ART+OBJECT photographic catalogue goes some way to illustrating the strength and diversity of New Zealand photography in the twentieth and twenty first centuries along with the importance of the medium in our collective cultural history.

– Ben Plumbly

15. Gavin Hipkins

The Village (Train)

Type C print, 1/5

title inscribed, signed and dated

2004 – 2005 verso

600 x 1200mm

Illustrated: Hannah Holm and

Lara Strongman (eds): *Contemporary*

New Zealand Photographers

(Auckland, 2005), p. 63.

\$5000 - \$7000



15



39

39. Ava Seymour

G.I Girls from Health, Happiness and Housing
colour photograph of a photomontage, 1/5

signed and dated 1997 verso

Illustrated: Ava Seymour, *Health, Happiness and Housing* (Auckland), p.6.

725 x 890mm

\$2500 - \$4000

Important Modern + Contemporary Photographs

Thursday 19 July 2007 at 6.30 pm

3 Abbey Street, Newton, Auckland

Exhibition Viewing

Opening event Friday July 13 6pm – 8pm

Saturday	14 July	11am – 4pm
Sunday	15 July	11am – 4pm
Monday	16 July	9am – 5pm
Tuesday	17 July	9am – 5pm
Wednesday	18 July	9am – 5pm
Thursday	19 July	9am – 1pm

Enquiries and condition reports to ben@artandobject.co.nz



1



2



3



4

1. Ronnie van Hout

Visitation

gelatin silver print, circa 1993

70 x 98mm

Provenance: Produced by the artist as
page art for the magazine *Illusions* 18

\$1000 - \$1500

2. Ronnie van Hout

Behold

gelatin silver print, circa 1993

70 x 98mm

Provenance: Produced by the artist as
page art for the magazine *Illusions* 18

\$1000 - \$1500

3. Ronnie van Hout

Rejoice

gelatin silver print, circa 1993

70 x 98mm

Provenance: Produced by the artist as
page art for the magazine *Illusions* 18

\$1000 - \$1500

4. Ronnie van Hout

2024 A.D.

gelatin silver print, circa 1993

70 x 98mm

Provenance: Produced by the artist as
page art for the magazine *Illusions* 18

\$1000 - \$1500



5



6

5. Laurence Aberhart

Angel over Whangape Harbour, Northland 6 May 1982

gelatin silver print

artist's name and title printed on original label affixed verso

175 x 242mm

Exhibited: 'Aberhart', City Gallery, Wellington and Dunedin Public Art Gallery, Dunedin (May – November 2007)

Illustrated: Gregory O'Brien and Justin Paton, *Aberhart* (Victoria University Press, 2007), plate 113.

\$4000 - \$6000

6. Marti Freidlander

Jubilee, Turangawaewae

gelatin silver print, edition of 3

480 x 480mm

Provenance: Purchased by the current owner from FHE Galleries

\$6000 - \$9000



7



8

7. Jae Hoon Lee

A New Farm

digital print, 1/5

1200 x 900mm

title inscribed, signed and dated 2005

verso

\$2500 - \$4000

8. Yvonne Todd

Homage to Dr Spackman

lightjet print, 3/3

title inscribed, signed and dated 15 April 2004 verso

445 x 310mm

Reference: www.ervon.com/show.php?id=9&table=details

Exhibited: 'I I Colour Plates', Ivan Anthony Gallery, Auckland (2004)

: 'Telecom Prospect', City Gallery, Wellington (2004)

\$3000 - \$5000



9

9. Ross T. Smith

Stillness Falls Continually

Fujicolour photographic print, 1/10
title inscribed, signed and dated 2000
on artist's original label affixed verso
600 x 750mm

\$2000 - \$3000



10

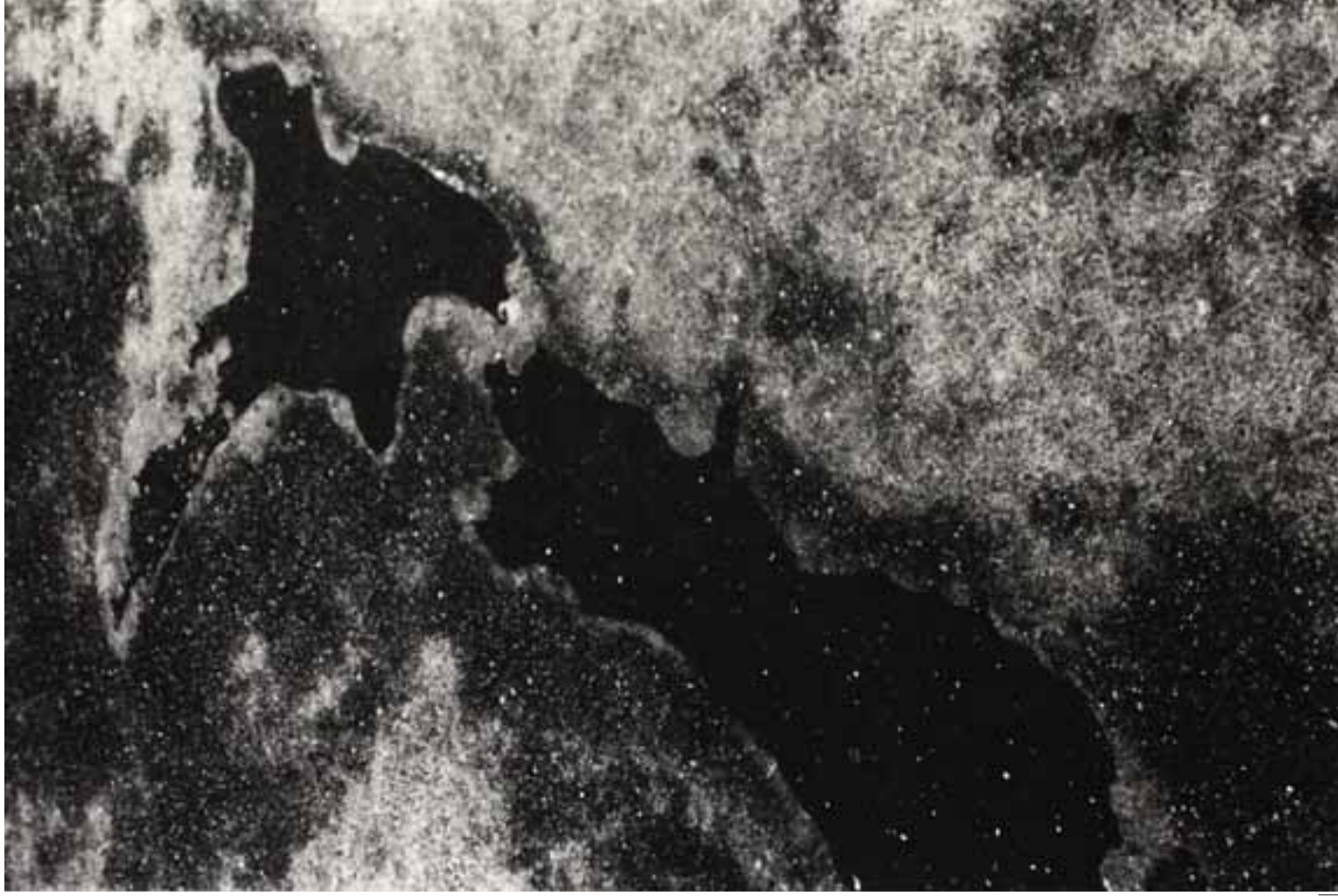
10. Ross T. Smith

Your Mouth is Stained with Sun

Fujicolour photographic print, 1/10
title inscribed, signed and dated 2000
on artist's original label affixed verso
1150 x 1430mm

\$2500 - \$4000

11. Peter Peryer
New Zealand
gelatin silver print
title inscribed, signed
and dated 15/3/91 verso
and inscribed taken in
the grounds of a school at
Sandringham, Auckland
412 x 273mm
\$5000 - \$8000



12. Peter Peryer

Isabella

gelatin silver print,

11/25

title inscribed, signed

and dated 2001 verso

368 x 242mm

Illustrated:

Susette Goldsmith (ed),

The Left Hand Raised:

Peter Peryer Photographs

1995 – 2001

(Govett-Brewster,

2001), cover, p. 7.

Provenance: Private collection, Wellington

\$4500 - \$6500



12

I3. Ann Shelton
 No. 4 Frederick B. Butler
 Collection, Puke Ariki,
 New Plymouth, Scrapbooks
 from Volume 1097 1899
 September – November to
 Maori Pa's in City Area
Type C photographic print,
 edition of 3
 signed verso
 1365 x 965mm
\$2500 - \$4000



I4. Julia Morison

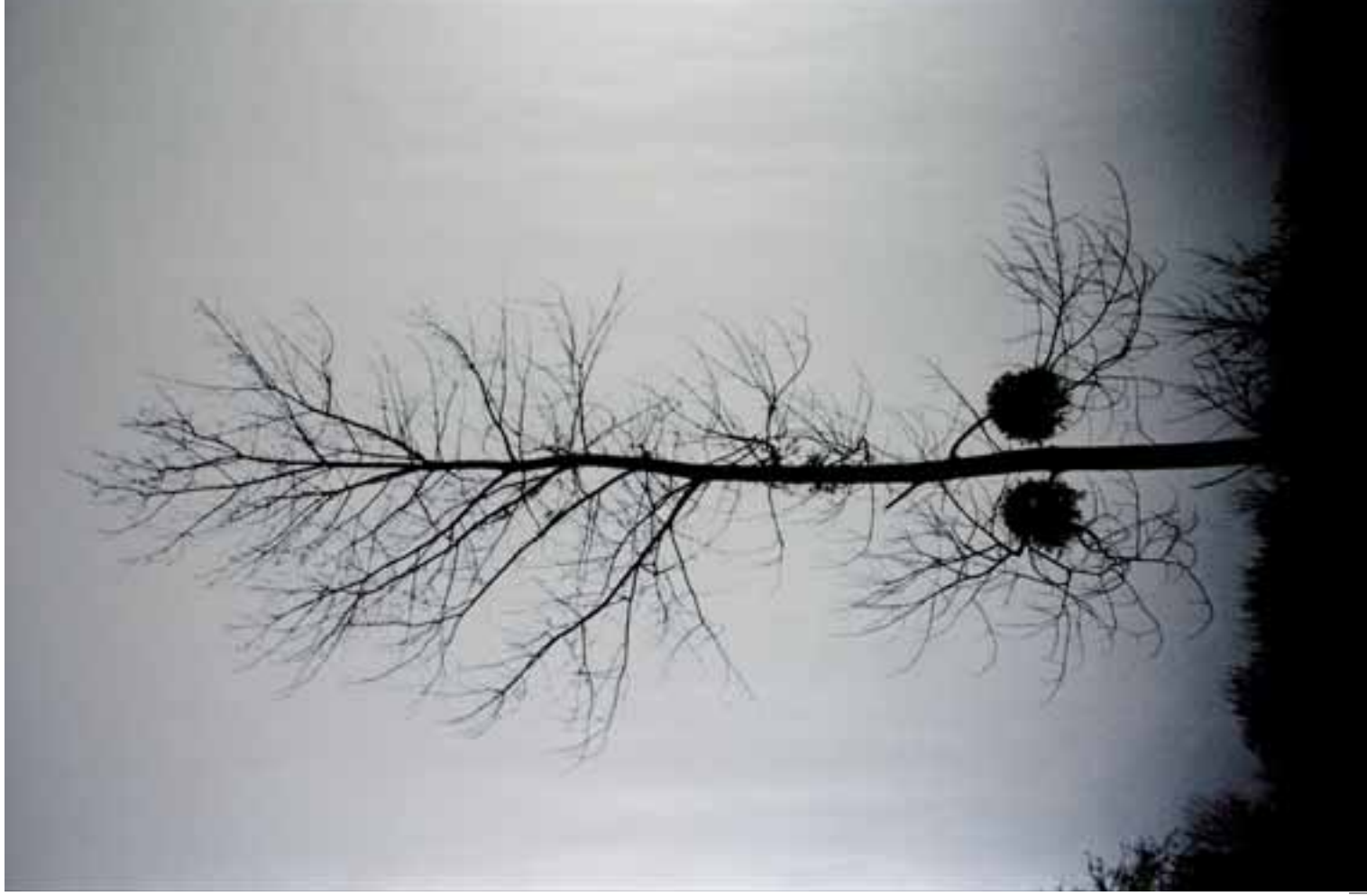
*There's too much juice in
you yet for truth*

lambda print, 1/5 (1998)

1190 x 785mm

Provenance: Private
collection, South Island

\$3000 - \$5000



14



15. Gavin Hipkins

The Village (Train)

Type C print, 1/5

title inscribed, signed and dated 2004 – 2005 verso

600 x 1200mm

Illustrated: Hannah Holm and Lara Strongman (eds),

Contemporary New Zealand Photographers (Auckland, 2005), p. 63.

\$5000 - \$7000

16. Gavin Hipkins

The Homely: Christchurch (Mask)

Type C print, 718

title inscribed, signed

and dated '03 verso

600 x 400mm

Exhibited: 'Gavin Hipkins,

The Homely', City Gallery

Touring Exhibition, Wellington

July – September 2001

: 'Gavin Hipkins,

The Homely', The Walters Prize

Finalist Exhibition,

Auckland City Art Gallery, 2002

Illustrated: Lara Strongman (ed),

Gavin Hipkins, The Homely

(City Gallery, 2001), cover.

\$5500 - \$7500



17. Christine Webster

Untitled (Black Carnival)

cibachrome photographic print,
edition of 3

title inscribed, signed and dated
1992/93 verso 2700 x 1200mm

Provenance: from the
collection of Dunedin

curator and art historian,
Peter Entwisle

\$6000 - \$9000





18

18. Christine Webster

Blood (From Possession and Mirth)

cibachrome photographic print, edition of 3

title inscribed, signed and dated 1992 verso

Provenance: from the collection of Dunedin

curator and art historian, Peter Entwisle

2300 x 1080mm

\$5000 - \$8000



19

19. Christine Webster

Pip Van Winkle

cibachrome print

title inscribed, signed and dated 1984 verso

490 x 490mm

\$2500 - \$3500

26 | 27



20



20



21

20. Gordon H. Brown

Set of five photographs of Colin McCahon:

Partridge Street: Colin McCahon in Profile

Partridge Street: Colin McCahon

Partridge Street: Colin McCahon

gelatin silver prints, 3/6

titles inscribed, signed and dated 1968

on each verso

253 x 304mm each

20

Geraldine Home of the Late Mrs Ethel McCahon, Two Chairs

Geraldine Home of the Late Mrs Ethel McCahon, Table

gelatin silver prints, 2/4

titles inscribed, signed and dated late 1973 on each verso

204 x 127mm each

\$2000 - \$3000

21. Robin Morrison

Stan Cotter's House, Near Cromwell

colour photograph

400 x 260mm

Provenance: Private collection, Auckland

\$3500 - \$5000



22

22. Theo Schoon

Experiment with Tapered Coils

gelatin silver print

title inscribed verso

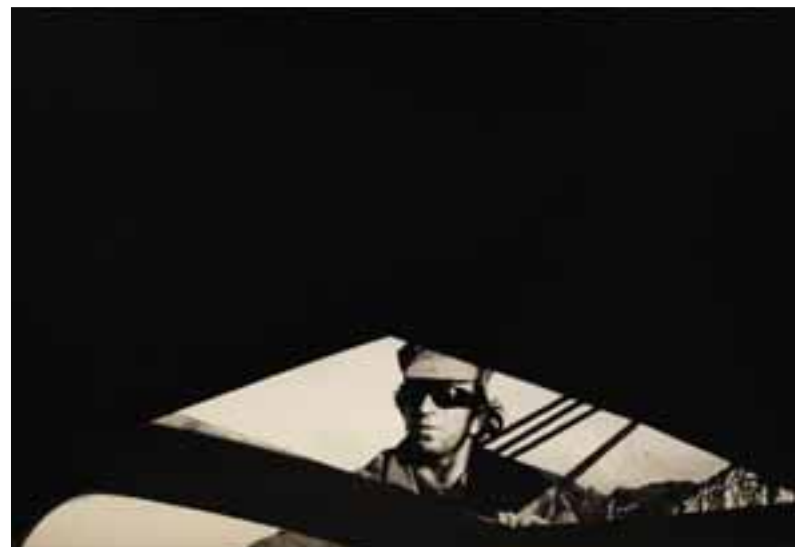
206 x 165mm

Provenance: From the collection of the potter and artist's friend, Len Castle

\$1500 - \$2500



23



24

24. Gary Baigent

Chris Doudney off Little Barrier Island

vintage gelatin silver print, 1967

198 x 300mm

Provenance: Private collection, Auckland

\$1500 - \$2500

23. Wayne Barrar

Ohau Riverbed Below Ruataniwha, 2002

gelatin silver print, 3/12

signed verso; original Wayne Barrar blind stamp applied verso

415 x 595mm

Illustrated: Hannah Holm and Lara Strongman (eds):

Contemporary New Zealand Photographers (Auckland, 2005), p. 91.

Exhibited: 'Parts Unknown', Milford Galleries Auckland, May – April 2003

Provenance: Private collection, Auckland

\$1800 - \$2800

28 | 29



25



26

25. Harvey Bengt

Stereotype Number 10

digital print on Fuji archival paper, 1/5
(2004)

signed on artist's original printed label
affixed verso

670 x 900mm

\$2500 - \$3500

26. Harvey Bengt

First Ever Pictures of God

forty photographic prints in deluxe
cased copy

(published by Librairie Florence,
Loewy, Paris), 6/15

each print signed

each print 150 x 100mm

\$900 - \$1500



27

27. Gary Baigent

John Street

colour photograph, 2005

280 x 430mm

\$700 - \$1000



28



30



29

28. Clive Stone

Blue Buick

photographic collage consisting of
three gelatin silver prints, 1/10
title inscribed, signed and dated 1995
420 x 905mm overall
\$1500 - \$2500

29. Clive Stone

Dad's Watch

gelatin silver print, 3/20
title inscribed, signed
and dated 1997
295 x 247mm
\$800 - \$1400

30. Richard Collins

(Citroen) Pakiri

vintage gelatin silver print
title inscribed and dated 1970/04/01
305 x 404mm
\$700 - \$1000



31

31. Robin Morrison

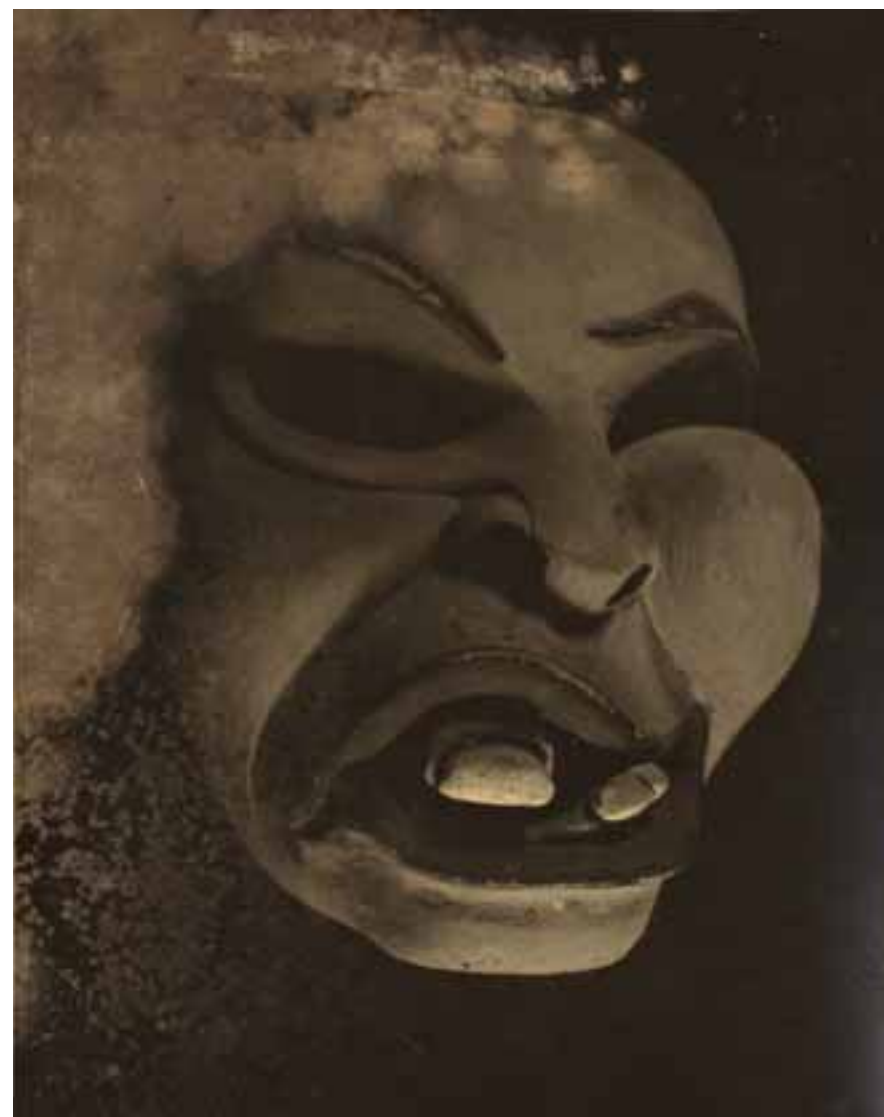
*Portrait of Robin White in front of Harbour
Cone, Dunedin*

colour photograph

412 x 270mm

Provenance: Private collection, Auckland

\$3500 - \$5000



32

32. Theo Schoon

The Indonesian Mask

vintage gelatin silver print, circa 1940

255 x 204mm

\$1500 - \$2500



33



34



35

33. Theo Schoon

Waiotapu Mud Pool Study

unique cibachrome photograph originally taken in 1967 and later printed in 1982 by Schoon and John Perry from the ektachrome transparency, 460 x 470mm
Provenance: Purchased by the current owner from John Leech Gallery, March 2002
: Private collection, America

\$4000 - \$6000

34. Theo Schoon

Waiotapu Mud Pool Study

unique cibachrome photograph originally taken in 1967 and later printed in 1982 by Schoon and John Perry from the ektachrome transparency, 460 x 470mm
Provenance: Purchased by the current owner from John Leech Gallery, March 2002
: Private collection, America

\$4000 - \$6000

35. Theo Schoon

Mud Wave, Waiotapu Mud Pool

unique cibachrome photograph originally taken in 1967 and later printed in 1982 by Schoon and John Perry from the ektachrome transparency, 460 x 470mm
Provenance: Purchased by the current owner from John Leech Gallery in March 2002
: Private collection, America

\$4000 - \$6000



36

36. Anne Noble

Goal Post – Antarctica

digital pigment on rag paper, edition of 5
470 x 595mm

Illustrated: Hannah Holm and Lara Strongman (eds):
Contemporary New Zealand Photographers (Auckland, 2005), p. 63.

\$3500 - \$5000



37

37. Narelle Autio

Mermaids

Type C colour photographic print, 6/15 (2001)
800 x 1200mm

Provenance: Purchased by the current owner from Stills Gallery
Sydney in November 2004

\$3500 - \$5000



38



39



40

38. Fiona Pardington

Taniwha

gelatin silver prints, diptych

title inscribed, signed and dated 1995 verso

Reference: Christina Barton, 'Afterlife: Ans Westra in the Wake of the Documentary', in Luit H. Bieringer (ed), *Handboek: Ans Westra Photographs* (Wellington, 2004), pp. 99 – 100.

Illustrated: *ibid.*, p. 99.

450 x 750mm

\$3000 - \$5000

39. Ava Seymour

G.I Girls from Health, Happiness and Housing
colour photograph of a photomontage, 1/5
signed and dated 1997 verso

Illustrated: Ava Seymour, *Health, Happiness and Housing* (Auckland), p.6.

725 x 890mm

\$2500 - \$4000

40. Ronnie van Hout

Finding Head

colour photograph, 1/20
title inscribed, signed and dated 2002

395 x 505mm

\$2200 - \$3200

34 | 35

41. Michael Parekowhai

Craig Keller

Type C print, edition of 10

1200 x 700mm

Provenance: purchased by the
current owner from Gow
Langsford Gallery in 2001

:Private collection,

Auckland

\$8000 - \$12 000



42. Michael Parekowhai

Messines

Type C colour photograph,
edition of 8, 2001

Michael Lett label
affixed verso

1500 x 1200mm

\$10 000 - \$15 000





43

43. Fiona Pardington

Hei Tiki Carved by Prisoner from Parihaka while Incarcerated in Dunedin

gelatin silver print

title inscribed and signed verso

550 x 430mm

\$6000 - \$9000



44

44. Fiona Pardington

Plastic Tiki

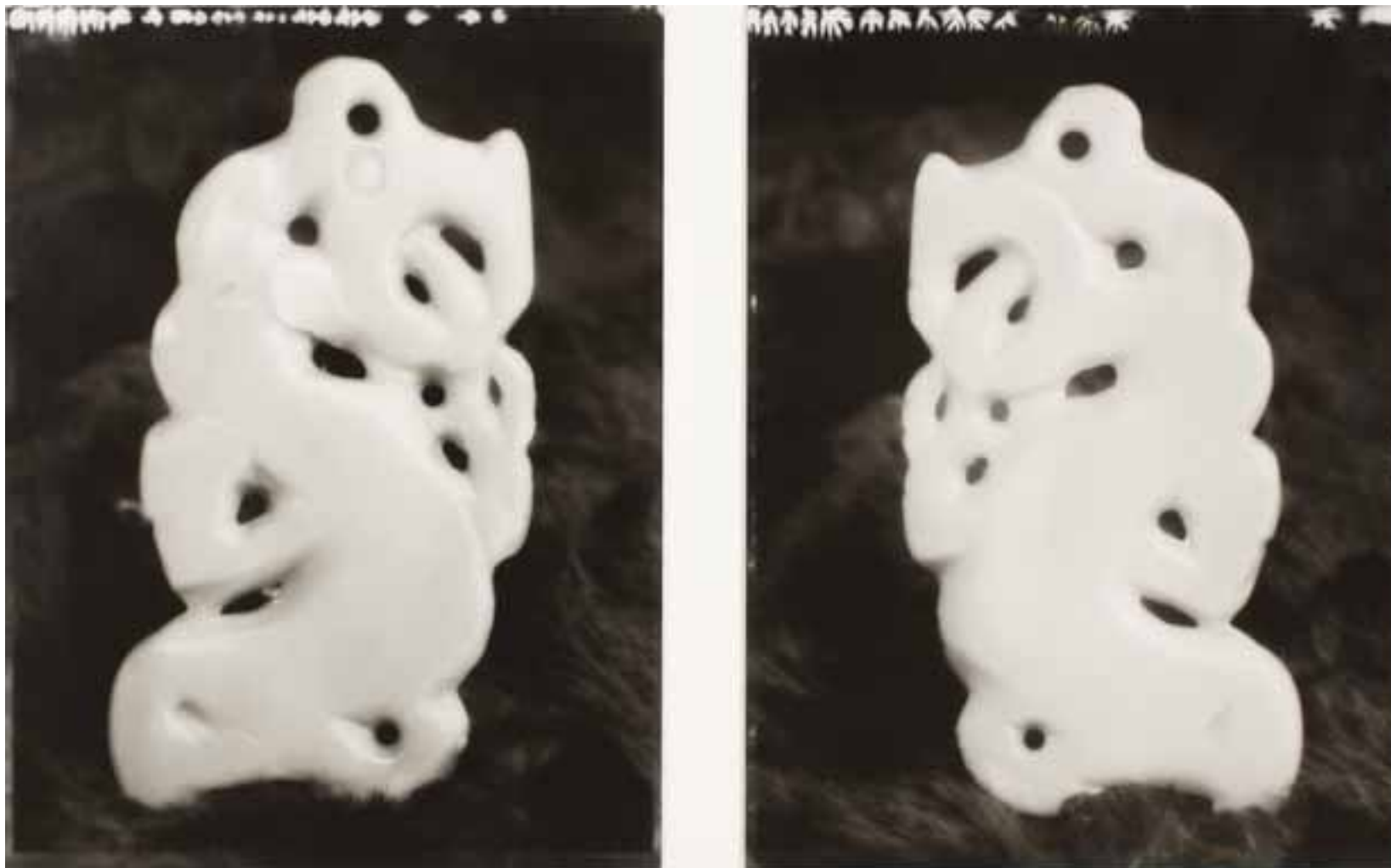
gelatin silver print

title inscribed, signed and dated 1999 – 2000 verso

550 x 415mm

Provenance: Private collection, South Island

\$4000 - \$6000



45

45. Fiona Pardington

Marakihau

gelatin silver print, diptych, edition of three

560 x 900mm overall

Provenance: Private collection, South Island

\$8000 - \$12 000



46. Laurence Aberhart

Interior No. 3, Tung Yung Association, Wellington, 18 April 1986

gelatin silver print

title inscribed, signed and dated 1986/1991 verso

192 x 243mm

\$3000 - \$4000

46



47. Paul Hartigan

The Kean's Cowboy

unique hand-coloured vintage colour photograph

signed and dated 1982

370 x 255mm

\$2500 - \$4000

47



48

48. Ann Shelton

Chris Zero

unique digital print taken from a colour slide
640 x 435mm

\$1000 - \$2000



49

49. Ava Seymour

The Living Room

colour photographic print, 4/5
title inscribed, signed and dated
488 x 660mm

\$1000 - \$2000

40 | 41



50

50. Shirley Grace

Portrait of Tony Fomison in the Studio at 4 Williamson Avenue
gelatin silver print, 1989

title inscribed, signed and dated October 1989 verso

340 x 230mm

\$1500 - \$2500



51

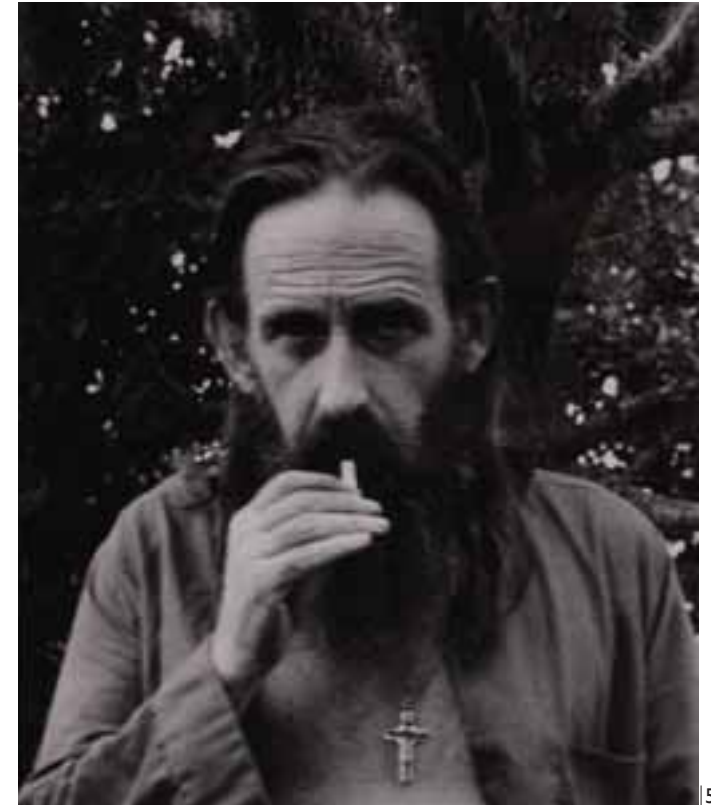
51. Shirley Grace

Tony Fomison on the Balcony at 4 Williamson Avenue
gelatin silver print, 1989

title inscribed, signed and dated October 1989 verso

340 x 230mm

\$1500 - \$2500



52

52. Ans Westra

James K. Baxter at Jerusalem
gelatin silver print

353 x 300mm

Illustrated: Michael King et al., *James K Baxter 1926 – 1972: A Memorial Volume* (1972)

Provenance: Private collection, Auckland

\$3000 - \$4000



53

53. Frank Hofmann

The Musician

vintage gelatin silver print

212 x 164mm

Provenance: from the
collection of the artist's estate

\$2500 - \$4000



54

54. Frank Hofmann

Study with Cigarette

vintage gelatin silver print

255 x 200mm

Provenance: from the
collection of the artist's estate

\$3000 - \$5000



55

55. Frank Hofmann

Constructivist Composition with Cello

vintage gelatin silver print

253 x 200mm

Provenance: from the collection
of the artist's estate

\$3000 - \$5000



56



58



62



59



61



63



57



60



64

56. George Chance
The Sentinels – Lake Hawea
gelatin silver print
title inscribed and signed
280 x 226mm
\$500 - \$800

57. George Chance
Beside Lake Hawea
gelatin silver print
title inscribed and signed
230 x 277mm
\$600 - \$1000

58. George Chance *Mount Cook* gelatin silver print exposed through a textured screen
title inscribed and signed; original George Chance *Camera Study* label affixed verso: 225 x 275mm **\$200 - \$400**

59. George Chance *Eglinton Valley Highway* gelatin silver print exposed through a textured screen
title inscribed and signed; George Chance *Camera Study* blind stamp applied verso: 230 x 280mm **\$400 - \$600**

60. George Chance *Eglinton River – Milford Sound Highway* gelatin silver print exposed through a textured screen
title inscribed and signed: 230 x 275mm **\$300 - \$500**

61. George Chance *The Landing – Lake Waikaremoana* gelatin silver print exposed through a textured screen
title inscribed and signed; original George Chance *Camera Study* label affixed verso: 223 x 275mm **\$200 - \$400**

62. George Chance *Near Tokaanu – Lake Taupo* gelatin silver print exposed through a textured screen
title inscribed and signed: 237 x 285mm **\$200 - \$300**

63. George Chance *Lake Wakatipu from Queenstown* gelatin silver print
title inscribed and signed; original George Chance *Camera Study* label affixed verso: 230 x 280mm **\$250 - \$400**

64. George Chance *Evening Light – Lake Taupo* gelatin silver print, title inscribed and signed **\$250 - \$400**



65



66



67



68

65. Les Cleveland

Wairarapa Racing Club, Featherston
gelatin silver print
title inscribed, signed and dated 4th August 1957
and inscribed *printed 2005* verso; *Les Cleveland*
blind stamp applied verso
187 x 243mm
\$500 - \$800

66. Les Cleveland

Elevator at Jack's Mill, Westland
vintage gelatin silver print
title inscribed, signed and dated 1957
verso; *Les Cleveland* blind stamp
applied verso
185 x 242mm
\$700 - \$1000

67. Les Cleveland

Dredge Buckets in Greenstone Valley
gelatin silver print
title inscribed, signed and dated 1960
and inscribed *printed 1994* verso; *Les Cleveland*
blind stamp applied verso
245 x 395mm
\$600 - \$900

68. Theo Schoon

A Study of Gourds in the Artist's Studio
vintage gelatin silver print, circa 1965
205 x 165mm
\$1000 - \$1600



69

69. Megan Jenkinson

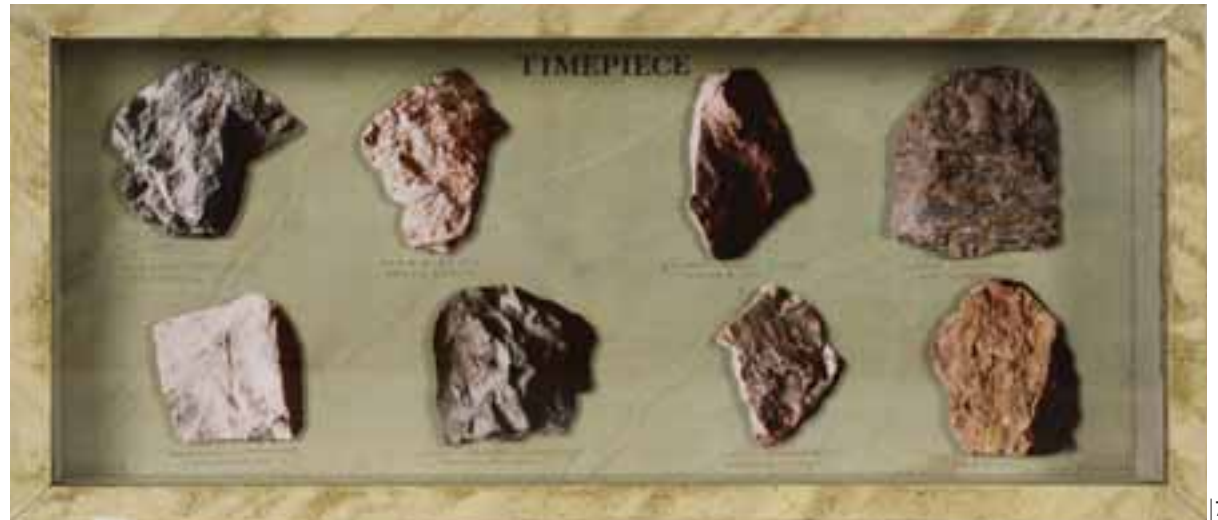
Witches Apron – Florentina Pectora (Flowering Hearts Series)

photographic collage

title inscribed, signed and dated 1987 verso

430 x 295mm

\$1500 - \$2500



70

70. Megan Jenkinson

Timepiece

photographic collage mounted in artist's original frame

title inscribed, signed and dated 1985 – 86

150 x 335mm

\$700 - \$1000

46

20th Century Design

Saturday 28 July 2007 at 4 pm

3 Abbey Street, Newton, Auckland

Exhibition Viewing

Opening event Friday July 20 6pm – 8pm

Saturday	21 July	11am – 4pm
Sunday	22 July	11am – 4pm
Monday	23 July	9am – 5pm
Tuesday	24 July	9am – 5pm
Wednesday	25 July	9am – 5pm
Thursday	26 July	9am – 5pm
Friday	27 July	9am – 1pm

Note: viewing ends – auction preparation commences

Saturday 28 July A+O opens 2pm, auction 4pm

Enquiries and condition reports to ross@artandobject.co.nz

- 1
Folke Ohlsson and Alf Svensson for Dux (Sweden)
Three seater sofa with curved back rail and slat back, cushioned seat with webbing support. Circa 1950s
Affixed Dux label
\$2000-2500 (*illustrated pg.49*)
- 2
1960s Scandinavian style circular coffee table by Lane USA
The top with walnut 'envelope' and ash frame and dovetail inlays. Raised on stretcher base with metal capped tapering legs
Dia 910mm Height 360mm
\$600-900 (*illustrated pg.49*)
- 3
Peter Hvidt and Orla Molgaard Neilsen for John Stuart Inc
Pair of European beech armchairs
With boomerang arms, turned tapering legs and frames, spindle backed, sprung wire supported seat with loose cushions.
Affixed metal disc label for John Stuart Inc, Grand Rapids.
\$1800-2600 (*illustrated pg.49*)
- 4
Danish teak side table
With oblong top raised on turned legs united by a lower tier of woven teak strips
650 x 450 x 510mm
\$400-600 (*illustrated pg.49*)
- 5
Late 1960s Danish teak lowline sideboard
With two sliding doors within a beveled 'picture frame' case, opening to reveal shelves and two drawers. Raised on a four point stretcher base
2000 x 460 x 785mm
\$2000-2800 (*illustrated pg.49*)
- 6
Pair of Murano sommerso green glass based table lamps
Square section, slightly tapering
\$350-450 (*illustrated pg.49*)
(*shade not included*)
- 7
Nils Thorsson for Royal Copenhagen (Denmark)
Fajance oblong section vase, c.1969
Numbered 719/ 3121
Marked with artist's initials. Height. 190mm
\$300-400 (*illustrated pg.49*)
- 8
Johanne Gerber for Royal Copenhagen
Fajance oblong section vase, c.1969
Numbered 792/3121. Marked with artist's initials. Height. 190mm
\$350-450 (*illustrated pg.49*)
- 9
Johanne Gerber for Royal Copenhagen
A similar fajance vase. Numbered 805/3259 and signed with artist's initials. Height 230mm. c.1969
\$250-300 (*illustrated pg.49*)
- 10
Bitossi Pottery for Rosenthal Netter
Circular wallled flask with yellow, black and white stripes on chocolate ground
\$200-300 (*illustrated pg.49*)
- 11
Peter Young (New Zealand) American black walnut side cabinet
With two hinged doors with 1960s inspired geometric relief paneled fascias, enclosing shelves, raised on four tapering legs.
118 x 34 x 142mm
\$5500-6000 (*illustrated pg.49*)
- 12
Finn Juhl FD 137 easy chair (Japan chair) and a pair of teak framed arm chairs in the manner of Finn Juhl's Bwana design with cued upholstered arms
All upholstered in original vintage charcoal fabric
\$4750-5500 (*illustrated pg.49*)
- 13
Inge Lise-Kofoed for Royal Copenhagen
Fajance flask shaped vase, c.1969.
Numbered 148/2740 and signed with artist's initials. Height. 290mm.
\$350-450 (*illustrated pg.49*)
- 14
Inge Lise-Kofoed for Royal Copenhagen
Fajance tall oval section vase, c.1964.
Numbered 450/3116. Marked with artist's initials. Height. 290mm
\$350-450 (*illustrated pg.49*)
- 15
Margaret Radford pottery wall panel
Tiled and relief with various colored glazes
\$300-400 (*illustrated pg.49*)
- 16
Karin and Erling Heerwagen (Denmark)
Hand built Heerwagen studio pottery sculpture, c.1972.Width 170mm height 170mm
\$250-350 (*illustrated pg.49*)
- 17
Poole Delphis quadrangular dish
Trial studio piece, early 60s
\$100-175 (*illustrated pg.49*)
- 18
Poole Delphis plate
Dia.200mm
\$100-175 (*illustrated pg.49*)
- 19
255/28 Poole Delphis plate
Dia.200mm
\$75-125 (*illustrated pg.49*)
- 20
Ellen Malmer for Royal Copenhagen
Set of eight fajance wall plaques, c.1974
Dia.150mm each
\$150-250 (*illustrated pg.49*)
- 20A
Pendent lamp in the manner of Naum Gabo. c.1965
Perspex fins held on annular discs wound with light catching nylon filament in 'spiromorph' fashion
\$300-500



- 21
Pair of Space Age British club chairs
Hemispherical shape raised on a circular spreading foot. Tilting and swiveling action
Blue vinyl upholstery with white vinyl loose seat cushion. c.1960s
\$3500-5000 (illustrated pg.51)
- 22
American black walnut lowline sideboard by Peter Young
With geometric faceted paneled doors with hidden release catches, flush fitted in a 'picture frame' case, raised on a four point stretcher base
2110 x 730 x 485mm
\$8500-9500 (illustrated pg.51)
- 23
Arne Jacobsen for Fritz Hansen Egg Chair
Chocolate brown wool fabric upholstery with loose seat cushion. Designed 1956
\$6000-8000 (illustrated pg.51)
- 24
Arne Jacobsen for Fritz Hansen Egg Chair
Blue wool fabric upholstery with loose seat cushion. Designed 1956
\$5000-7000
- 25
Christian Jensen for Haslev Mobelfabrik
Three seater teak framed sofa, with loose cushions upholstered in brown wool blend fabric
Manufacturers and Danish Furniture Manufacturers Control labels affixed
1990 x 760 x 680mm
\$1500-2200 (illustrated pg.51)
- 26
Finn Juhl for France and Son
Diplomat coffee table
Teak rectangular top with turned up edges raised on four point stretcher base
Metal label inset underneath. c.1961-62
1700 x 600 x 440mm
\$1200-1600 (illustrated pg.51)
- 27
Hans Wegner
Nest of three teak tables
Manufactured by Andreas Tuck
Rectangular raised on tapering legs united by stretchers
Largest 520 x 340 x 480mm
Impressed makers and designer's label under top
\$800-1000 (illustrated pg.51)
- 28
American 1960s walnut lowboy
With two banks of four wide drawers flanking a central bank of narrow drawers, all with ebonized fingertip handles
Raised on ebonized tapering legs
1580 x 455 x 790mm
\$1200-2000 (illustrated pg.51)
- 29
American 1960s walnut tallboy
With four wide drawers with ebonized fingertip handles. Raised on ebonized tapering legs
870 x 455 x 1085mm
\$700-900
- 30
Murano fluted walled ovoid vase
Amethyst submerged in sapphire blue glass.
\$150-250 (illustrated pg.51)
- 31
1960s art glass two pronged vase
Cranberry colour. Affixed Hineri label
\$100-150 (illustrated pg.51)
- 32
Canary yellow and clear glass sommerso art glass vase
Of amorphic three pronged shape
\$100-150 (illustrated pg.51)
- 33
Dark sapphire blue and white glass
submerged in clear glass vase
Amorphic three pronged shape
\$90-140 (illustrated pg.51)
- 34
Murano Crown of thorns vase/ candlestick
Amethyst and sapphire blue submerged in clear glass. Original Murano label affixed
\$200-300 (illustrated pg.51)
- 35
German pottery vase
Bongo drum form with tribal inspired encircling motifs in gold and bronze luster on a black ground
\$80-120 (illustrated pg.51)
- 36
Scheurich German pottery cylindrical vase
Volcanic spiderweb over orange lustre glaze
\$100-200 (illustrated pg.51)
- 37
German pottery vase
Ovoid shape, high fire lava red glaze with dripping ash mouth
\$40-60 (illustrated pg.51)
- 38
West German pottery vase
Mallet body with pan mouth, glazed in orange and white with black lava banding
\$30-50 (illustrated pg.51)
- 39
Large cylindrical German pottery vase
With red and brown lava glaze at the mouth and foot and five encircling bands to the centre. Height 425mm
\$200-300 (illustrated pg.51)
- 40
Large German pottery ovoid ewer vase
with red and brown high fired lava glaze spilling over the shoulder
Height 300mm, Dia.210mm
\$150-250 (illustrated pg.51)
- 41
Massive German pottery vase by Scheurich
Europe Linie labell affixed
White slip vertical corded decoration with four wax resist encircling bands revealing the matt chocolate ground
Height 500mm, Dia.250mm
\$300-500 (illustrated pg.51)
- 42
Keith Murray for Wedgwood
Grenade vase
Matt straw glaze, shape 3765, Printed manufacturer's mark and KM initials, c.1950
Height 190mm
\$1200-1500 (illustrated pg.51)



43
Hans Wegner for Carl Hansen
Two CH30 side chairs
Teak curved oval back rail fixed to beech frame with cruciform thru-mortice, original black leather seats
Designed 1952. Povl Dinesen suppliers label under one
\$1200-1500 (illustrated pg.53)

44
Space age table lamp
With chrome tube raised from a cube plinth base, supporting six clustered spherical chrome shades
Height 830mm
\$350-450 (illustrated pg.53)

44a
Plane model to be offered in the Popular Culture auction
August 11th. Enquiries
james@artandobject.co.nz

45
Peter Protzman for Herman Miller
High figure veneered timber chrome framed executive desk
With Perspex walled drawers either side of a compartmentalized utility drawer
Labelled inside drawers
1655 x 770 x 750mm
\$5000-8000 (illustrated pg.53)

46
Geoffrey Hollington for Herman Miller
Tan leather upholstered office executive armchair, raised on five point polished aluminium star base with gas cylinder height adjustment and sprung tilt.
Designed c.1986, produced 1989
Herman Miller label to back of base
\$2500-3000 (illustrated pg.53)

47
Geoffrey Hollington for Herman Miller
Tan leather upholstered office executive armchair, as above
\$2500-3000

48
Geoffrey Hollington for Herman Miller
Tan leather upholstered office executive armchair, as above
\$2500-3000

49
Geoffrey Hollington for Herman Miller
Tan leather upholstered office executive armchair, as above
\$2500-3000

50
Geoffrey Hollington for Herman Miller
Tan leather upholstered office executive armchair, as above
\$2500-3000

51
Geoffrey Hollington for Herman Miller
Tan leather upholstered office executive armchair, as above
\$2500-3000

52
Geoffrey Hollington for Herman Miller
Tan leather upholstered office executive armchair, as above
\$2500-3000

53
Geoffrey Hollington for Herman Miller
Tan leather upholstered office executive armchair, as above
\$2500-3000

54
1960s moulded plywood framed armchair with black vinyl upholstered cushioned seat and back. Set on ebonized legs terminating in brass cappings
\$1200-1800 (illustrated pg.53)

55
Johannes Andersen (Denmark)
Early 1960s teak extension dining table and four dining chairs
Original retailers label under chairs
\$1600-2000 chair (illustrated pg.53)

56
Le Corbusier by Cassina
Petit Confort LC3 two seater sofa
Aniline black leather upholstered loose cushions held within a chromed tube steel frame. Designed in 1928, made under license to the Le Corbusier Foundation
Etched manufacturers mark and numbered 0065311 to frame
1670 x 725 x 615mm
\$3000-4000 (illustrated pg.53)

57
Piero Fornasetti Sunburst side chair
Painted/lacquered wood with serigraphic decoupage print, black lacquered steel legs
Affixed label
\$2250-3000 (illustrated pg.53)

58
Piero Fornasetti
Complete set of 'Adam' and 'Eve' plates
Designed 1954. Each with lithographic print and burnished gold
\$7000-8000 (illustrated pg.53)

59
Danish Deluxe (Australia)
Lounge chair and ottoman
Teak veneered ply cantilever framed, black leather upholstered
Circa 1970s
\$1400-1600

60
Danish rosewood credenza with three sliding doors
With box inlaid drawers behind one door
Danish export control mark
2000 x 1100 x 435mm
\$3000 - \$5000

61
Jens Quistgaard oblong teak serving tray
With scalloped surface. Branded marks
575 x 415mm
\$150-250

62
Jens Quistgaard for Dansk circular teak thick walled salad bowl
Straight sided. Dia.295mm H.105mm
\$100-200

63
Jens Quistgaard for Dansk circular teak salad bowl
With tapering walls and beveled rim
Branded. Dia.295mm H.100mm
\$80-120



64
Jens Quistgaard for Dansk circular teak salad bowl
With tapering walls, beveled rim and brand mark. Dia.270mm H.115mm
\$80-120 (illustrated pg.55)

65
Pair of American table lamps
With brass column bases supporting white acrylic hemispherical shades, raised from clear Lucite circular plinth bases
Early 1980s
\$450-550 (illustrated pg.55)

66
Margaret Radford pottery wall panel
Tiled and relief with various colored glazes
\$300-400 (illustrated pg.55)

67
Space age standard lamp
With black lacquered tube raised from a circular plinth base, supporting six clustered spherical chrome shades
Height 1770mm
\$600-700 (illustrated pg.55)

68
Beth Beyren for Royal Copenhagen wall plaque
Old Alumina beehive mark, c.1968
Height 300mm
\$200-300 (illustrated pg.55)

69
Ceramic wall plaque
In the manner of Denise Bernard (France) or Charles Staes (Denmark)
c.1950s. Height 390mm
\$150-250 (illustrated pg.55)

70
Jens Quistgaard circular teak, lidded ice bucket
With recessed lid, plastic fitted lining. Branded marks.
Dia. 230xmm. Height 145mm
\$100-200 (illustrated pg.55)

71
Jens Quistgaard for Dansk circular cheese board
With associated stainless steel bladed knife whose pear shaped handle settles into a conforming hollow on the board's surface
D.280mm
\$80-120 (illustrated pg.55)

72
Timo Sarpaneva for iitalia
Ice vase of square section with circular everted rim, c.1970s. Height 140mm
Dia.220mm
\$100-200 (illustrated pg.55)

73
Tapio Wirkkala for iitalia
Two Ultima Thule glass bowls and a beaker
\$200-300 (illustrated pg.55)

74
Peter Young Japanese oak side table
With slender box section top open at either end and with two drawers in the fascia with exposed dovetails and wenge handles. 1580 x 360 x 780mm
\$2400-3000 (illustrated pg.55)

75
Le Corbusier by Cassina
Chaise Longue LC4
Aniline black leather upholstered adjustable chrome cradle on matte black steel base
Designed in 1928, made under license to the Le Corbusier Foundation
Etched manufacturers mark and numbered 0031281 to frame
\$2500-3500 (illustrated pg.55)

76
Vico Magistretti for Artemide Gaudi chair
Injection moulded reinforced polymer, brown. Designed 1970
\$500-700 (illustrated pg.55)

77
Mario Bellini for B&B Italia Amanti coffee table
Square top raised on integral legs, injection moulded brown polymer
400 x 400 x 345mm
\$350-450 (illustrated pg.55)

78
Vico Magistratti for Artemide
Set of six Selene chairs
Designed 1969, manufactured c.1970s.
Injection moulded fiberglass compound plastic in brown gloss finish
\$3000-3500 (illustrated pg.55)

79
Vico Magistratti for Artemide Stadio 120 table
Injection moulded fiberglass compound plastic in brown gloss finish
1250 x 850 x 720mm
\$500-750

80
Charles and Ray Eames for Herman Miller
Set of six DCM (dining chair metal) Walnut plywood on chrome leg bases
Designed 1947, manufactured 1960s
\$3500-4500 (illustrated pg.55)

81
Eero Saarinen Tulip dining suite
Oval white laminate topped table on cast aluminium pedestal base and eight matching chairs with red wool upholstered cushions
\$4000-5000 (illustrated pg.55)

82
Piero Fornasetti, Six Ultime Notizie (Latest News)/Butterfly chairs
White lacquered wood with decoupage style serigraphic prints of international newspapers and coloured butterflies
Raised on black lacquered tapering turned legs. Designed for the Fornasetti apartments in Milan
Each numbered N2-N7 and dated 2006
\$15000-20000 (illustrated pg.55)

83
French 1960s mahogany sideboard
With plate glass top, fascia of two pairs of doors with line inlay; raised on tapering turned legs. The interior satinwood lined
A Bonnet, Geneston retailer's label inside door. 2200 x 500 x 980mm
\$3000-3600 (illustrated pg.55)



84

**Piero Lissoni and Sung-Sook Kim
for Cassina, 250 MET bench**

Upholstered in black dyed aniline full grain leather, raised on polished aluminium legs
1725 x 900 x 400mm
Designed 1996
\$2000-2500 (illustrated pg.57)

85

**Ron Arad , T44 mobile ply and
aluminium folding trolley**

Designed c.1993
1140 x 460 x 715mm
\$2500-3000 (illustrated pg.57)

86

**Ron Arad for Driade Aleph
Fly Ply table**

Stem bent plywood on cast aluminium legs
Designed c.1993
Branded mark underneath
2100 x 925 x 720mm
One of only four imported into Australasia
\$8000-10000 (illustrated pg.57)

87

Alvar Aalto for Artek Daybed 710

Natural lacquered birch frame, with zebra stripe upholstered mattress 2030 x 920mm
\$1800-2200 (illustrated pg.57)

88

**Alvar Aalto for Artek
Table 81B and two Chair 63**

Natural lacquered birch L-legs and frame
The chairs with zebra stripe upholstery
the table with white laminate top
1200 x 750 x 720mm.
Designed 1933-35
\$2000-3000 (illustrated pg.57)

89

**Arne Jacobsen for Fritz Hansen
Ant chair 3100**

Natural birch veneered ply on three chromed steel legs
Designed 1951, manufactured 1974
\$400-500 (illustrated pg.57)

90

**Charlotte Perriand, four leather
and chrome stacking side chairs**

Originally designed for the Amenagement de la Station des Arcs 1800, a ski resort in France
\$2500-3500 (illustrated pg.57)

91

**Gio Ponti (1891-1979), rare
Superleggera chair**

Model #699 by Cassina (Italy)
European beech with woven cane seat
c.1950s
\$1000-2000 (illustrated pg.57)

92

**Charles Rennie McIntosh re-issue
by Cassina, Argyle chair**

Produced 1973. Black ebonized oak with cotton upholstered seat
After the original for the Argyle Street Tearooms, Glasgow, designed 1897
\$1500-2000 (illustrated pg.57)

93

**Verner Panton for Louis Poulsen
Moon lamp**

Designed 1960
Cream anodized metal with original ceiling rose and porcelain lamp holder. Original LP label affixed. With adjustable concentric visors mirroring the ten phases of the moon acting to diffuse the light
\$1200-2000

94

**Peter Young, Cubi demountable
shelving system**

Anodized aluminium framed and keruing ply timber box shelf unit
\$2400-2800

95

Bruno Fattorini for MDF Italia

Lim 45 bench table, anodized aluminium
1600 x 300 x 300mm
\$400-600

96

Jydsk Mobelindustri

Swedish teak credenza
three sliding doors enclose two slender drawers to the right hand side
Raised on a four point base
Affixed label to reverse
1800 x 450 x 800mm
\$1500-2000

97

**Peter Hvidt and Orla Molgaard
Nielsen for France and Daverkosen**

Teak serving trolley with lower tier
The top raised from the frame on anodized gilt metal balls. Designed 1956
1370 x 500 x 630mm with side flaps lifted
\$600-900

98

**1960s upholstered American sofa
in Scandinavian style**

with loose cushions, raised on a walnut four point base
\$1400-1800

99

Swedish mosaic topped coffee table

Circular, raised on three gold anodized tapering screw in legs
Dia 905mm Height 380mm
\$500-600

100

Poole Delphis circular wall plaque

Dia. 350mm
\$150-250

101

Poole Delphis plate

Dia.200mm
\$75-125

102

Poole Delphis plate

Dia.200mm
\$75-125

103

**West German pottery vase of
sectioned tapering beaker form**

Bone-lava glaze worked in sgraffito with American Indian inspired bird designs
Incised marks. H.270mm
\$100-200

104

**Pair of German Keramik 1950s
pottery vases**

Conical with flaring mouth, bone ground colour with encircling bands of slip trailed zig-zag design
\$125-250



105

German pottery ovoid ewer

Orange lustre glaze with encircling bands of Aztec pattern

\$40-60

106

German pottery vase

Tapering cylindrical shape, lava glaze banded in black brown and white

\$25-35

107

German pottery ewer

Angular handled mallet shape, glazed white speckle and with wax resist design to the body

\$45-65

108

German pottery 1950s vase

In matt brown with lemon yellow tribal influenced decoration

\$20-30

109

German pottery vase

Mallet body with black bands top and bottom with elliptical turquoise panels

\$50-70

110

Small German pottery ewer

Orange luster high fired volcanic glaze

\$20-30

111

German pottery dish

Decorated to the interior with a design of eight tab panels

\$20-30

112

Margaret Radford pottery wall panel

Tiled and relief with coloured glazes

\$200-300 (illustrated pg.59)

113

Poole carved walled cylindrical vase

Shape 83. Height 150mm, Dia.90mm

\$150-200 (illustrated pg.59)

114

Poole pottery planter/vase

Tapering cylindrical shape with 'brick' carved and painted walls

Shape 92 Height 110mm, Dia.150mm

\$125-150 (illustrated pg.59)

115

Eric Leaper (Leaper Pottery, Newlyn, Cornwall)

Oblong shallow dish decorated with a bull in black slip and scrafitto 260 x 200mm Chips

\$80-120 (illustrated pg.59)

116

Jorgen Morgensen for Royal Copenhagen

Stoneware bowl, with small dished well framed by a broad border impressed with stylized bird motifs. Incised artist's monogram and numbered 21388. c.1978 Dia.250mm

\$150-250 (illustrated pg.59)

117

Johanne Gerber for Royal Copenhagen

Fajance square section vase, c.1969 Numbered 805/3259 and signed with artist's initials. Height. 230mm

\$250-300 (illustrated pg.59)

118

Royal Copenhagen fajance square section vase, c.1969

Numbered 726/3259, signed with initials

Height. 230mm

\$150-250 (illustrated pg.59)

119

Nils Thorsson for Royal Copenhagen

Fajance square section vase, c.1969.

Numbered 711/3455 and signed with artist's initials. Height. 190mm

\$150-200 (illustrated pg.59)

120

Scandinavian teak coffee table

With ebonized base and tapering square section legs terminating in natural teak feet Circa 1960s

1220 x 605 x 440mm

\$400-500 (illustrated pg.59)

121

Grete Jalk for Davier Kosen

High back lounge with cushioned seat and removable upholstered headrest cushion. Branded Danish Furniture Control mark. c.1956

\$1500-2200 (illustrated pg.59)

122

Finn Juhl for France and Son Pair of Diplomat range chairs

Teak framed, grey wool blend upholstered seats and backs

\$1600-2400 (illustrated pg.59)

123

Two teak modular sideboards

One with drawers and cupboards, the other with cupboards and lift top

Fitted with brass ring pull handles

1220x410x840mm and 915x410x840mm

\$2000-2500 (illustrated pg.59)

124

Late 1960s Italian standard lamp

With adjustable height green hemispherical shade

\$200-300 (illustrated pg.59)

125

Alvar Aalto natural lacquered birch framed armchair and ottoman

With spindle back and sides, loose cushioned webbing seat

\$1800-2200 (illustrated pg.59)

126

Antonio Citterio for B&B Italia Four Baisity I armchairs

Upholstered in Envie and Equi cotton polyester jacquard removable covers Designed 1989

\$2800-3200 (illustrated pg.59)

127

B&B Italia, two Baisity Servomuto service table/trolley

Oval plastic tray top raised on chromed steel legs with castors

\$400-600 (illustrated pg.59)

128

Antonio Citterio for B&B Italia Two Sity series sofas

Upholstered in Bairo cotton with Envie and Equi cotton polyester jacquard upholstered cushions. Designed 1986

\$3000-4000

129

Pair of cherry wood veneer bedside tables with splay legs

incorporating height adjustable lamps with PVC shades

\$500-700



130
Poole pottery planter/vase
 Tapering cylindrical shape with carved and painted walls. Shape 92 Height 110mm Dia.150mm
\$125-150

131
Two Poole Aegean small circular dishes
 One rare powder blue, the other typically polychrome. Shape 49. Dia.125mm
\$80-125

132
Two Poole Delphis small circular dishes Shape 49. Dia.125mm
\$50-75

133
German pottery vase
\$25-35

134
German pottery small spherical vase
 Textured I-Ching pattern in browns
\$25-35

135
German pottery bulbous ewer vase. Textured I-Ching pattern in brown and aquamarine
\$55-75

136
German pottery cylindrical vase
 White speckled background with encircling square paneled design
\$30-40

137
Pair of German pottery mallet bodied vases
 Orange lustre with ash glaze at the mouth and shoulder
\$60-80

138
German pottery inverse baluster vase
 Matt brown ground with central band of repeated brushpoint ovals between treacle borders encircling the body
\$80-120

139
Pair of German pottery ovoid ewer vases
 White speckled ground and encircling wax resist brown and orange band
\$100-150

140
German pottery ewer vase
 Cylindrical with freehand decorations in orange and red on a speckled brown ground
\$45-65

141
Pair 1960s Space Age bedside lamps
 White and orange acrylic
\$100-200

142
Arne Jacobsen style white laminate coffee table
 On anodized aluminium pedestal base
\$500-600

143
Round white laminate dining table
 With four fibreglass chairs raised on white metal bases. The chairs upholstered in Florence Broadhurst fabric
\$1200-1600

144
Late 1970s 'architectural' coffee table
 White powder coated steel rod triangulated beam structured frame with square glass top
 890 x 890 x 450mm
\$500-600

145
Powder coated tube steel stacked pyramidal based coffee table with glass top
\$400-500

146
Pair of powder coated tube steel stacked pyramidal based occasional tables with glass tops
\$400-500

147
Charles and Ray Eames for Herman Miller, white laminate circular topped dining table on aluminium 670 series base
 Dia. Height 720mm
\$800-1400

148
Scandinavian glass vase
 Amorphous beaker form, sapphire blue tint
 200 x 140 x 140mm
\$100-200

149
Keith Murray for Royal Brierley, thick-walled ovoid pink glass vase
 with myriad of included bubbles. Etched factory mark and facsimile signature
 Height 200mm, Dia.100mm
\$800-1200

150
Keith Murray for Royal Brierley Thick-walled squat clear baluster vase with myriad of included bubbles
 Etched factory mark and facsimile signature
 Height 150mm, Dia.105mm
\$600-800

151
Scandinavian glass 1960s cube vase
 Signed to base
\$100-140

152
Holmegaard glass drinking vessel
 With leather cord to hang around neck
 Label affixed
\$30-50

153
Tapio Wirkkala for Italia, two glass candle holders
\$150-200

154
Large Finnish glass candleholder
 Possibly by Tapio Wirkkala. c.1970s
\$100-200

155
Three Holmegaard glass decanters
 Mallet bodied with mask bosses applied to the sides
\$120-220

156
Ruby and clear glass vase
 Cylindrical bamboo shape
\$30-50

157
Swedish style smoky quartz glass elongated ovoid body decanter
With ring stopper
\$40-70

158
Tapio Wirkkala glass vase
c.1985. Height 150mm
\$100-150

159
Eric Jachmann for WMF Krystal Emerald-amber tinted glass tapering facet walled vase
Original label, circa 1950-60. Height 260mm
\$200-300

160
Val St.Lambert Luxval glass vase (Belgium) Beaker form
With glass bead chain handles to the sides
c.1935H.180mm
\$100-150

161
Folke Ohlsson and Alf Svensson for Dux (Sweden)
Ebonized framed two seater sofa with loose cushioned slat back and sprung seat
Designed c.1953
\$1500-2200

162
Ib Kofod Larsen for Selig Furniture Co Black lacquered rocking chair
With red wool upholstered loose cushion
Affixed metal disc marked 'Made and Finished in Denmark Imported by Selig'
\$900-1200

163
Pair of 1960s teak armchairs
With original vinyl covering
\$500-700

164
Jens Quistgaard for Dansk circular cheese board
End-grain teak construction. Paddle shaped, the handle which separates and reveals as a cheese knife
\$80-120

165
Jens Quistgaard for Dansk teak oval ashet with routed encircling channel and well at one end. Branded mark
450 x 230mm
\$60-80

166
Jens Quistgaard for Dansk circular teak cheese board
Half inlaid with end-grain cutting surface and half dished for crackers. Branded mark
Dia.300mm
\$80-120

167
Teak extension dining table with eight chairs including two carvers
1830 x 910 x 720mm (2440mm extended)
\$1500-2000

168
Matching teak square coffee table
\$400-500

169
Pair of Swedish black lacquered armchairs
With ski jump arms, spindle backs and webbing seats supporting loose cushioned seat and back
\$1200-1500

170
Ib Kofob Larsen for Christiansen & Larsen, Afromosia chair
Beech framed, green upholstered with loose seat cushion. c.1956
\$600-900

171
American walnut credenza
In the manner of Brown & Slatman, 1960s
With banks of drawers flanking a cupboard with two sliding doors, raised on four tapering legs
1830 x 535 x 720mm
\$1200-1800

172
Borge Morgenson (Danish) Beech 'trestle' table and two bench seats
Shaker influenced design in light timber
Early 1970s
1130 x 810 x 720mm
\$1500-2000

173
Arne Vodder for H Sigh & Sons Mobelfabrik, teak student's desk
With side drop leaf extension and bank of three drawers suspended beneath the work top and sliding left to right enabling the kneehole space to be alternated
1200 x 600 x 720mm
\$1500-1750

174
Finn Juhl for France and Son Diplomat cocktail table
Teak with turned up edge and central shelf. Metal label inset underneath. c.1961-62
\$700-900

175
Pair of Danish teak side chairs with woven seagrass seats
\$500-700

176
Hollywood style coffee table
Square red lacquered top with trompe l'oeil painted designs, raised on giltmetal base
1195 x 1200 x 430mm
\$1000-1400

177
Set of six dining chairs with teak seats, black lacquered spindle backs and screw in legs, together with a Swedish extension dining table with four leaves, similarly with black lacquered legs
\$2800-3500

178
Light wood veneer drop side table
Raised on painted tube steel legs terminating in rubber wheeled castors
1300 x 900 x 730mm extended
\$400-700

179
Lafer Furniture (Sao Paulo, Brazil)
1960s brown patinated leather lounge chair on chrome base
\$1200-1800

180
Large dark stained rosewood executive desk by Danner A/S
With floating top, two suspended banks of drawers
2000 x 1000 x 730mm
\$3000-4500

181
Peter Hvidt for John Stuart Inc teak frame foyer couch
With grey upholstered cushioned seat and back, on four point base
\$1700-2300

182
Danish teak 1960s chest
With four drawers
920 x 450 x 760mm
\$600-1000

183
Pair of Danish teak 1960s chests
With five drawers
470 x 540 x 760mm each
\$600-1000

184
German Keramik pottery vase
Waisted beaker form with sgraffito and jeweled decoration
\$100-140

185
German pottery bongo form vase
Decorated with a band of Mayan inspired motifs as a band on the ivory ground
\$30-50

186
German elongated ovoid vase
Snowstorm ground with gestural splashes in red and yellow
\$70-100

187
German pottery two handled vase
Earthy tones at neck and shoulder, lava orange peel at the base
\$25-35

188
Two matching German pottery vases
With polychrome Greek key motifs on ivory ground
\$80-120

189
German pottery cylindrical vase
Matt banded ground decorated with glazed trailing
\$40-60

190
German pottery squat circular vase
Drab olive glazed with chiseled fluted banding
\$60-90

191
German pottery vase
Cylindrical with pan mouth. Snow storm ground with crown motifs
\$30-40

192
German pottery vase
Capstan shape, white speckled ground with wax resist pattern
\$50-70

193
German pottery ewer vase
matching above
\$45-65

194
Conical German pottery vase
Slate ground with fireball motifs between cross-stitch bands
\$60-80

195
Baluster shape German pottery vase
Decorated as above
\$50-70

196
Mallet bodied German vase
Decorated as above
\$60-80

197
Conical German pottery vase
With vertical banded decoration
\$20-30

198
Shelley Jones for Artemide (Italy) Scilla chandelier and wall lamp
Murano yellow glass with green tints, six armed chandelier and two arm wall lamp
\$1000-1500

199
Pair of 1960s orange glass pendent light fittings
Trumpet shape, with original fittings
Height 350mm
\$150-250

200
Quartite Creative Corp table lamp
Ovoid textured ceramic base with inlaid mosaic tiles to the upper section
Original drum shade
Marked and dated MCMLXII (1962)
\$300-500

201
Jacques Fonk and Jean Mateo for Vallauris, two wall plaques
With molecular abstracted design in glazes and sgraffito. Signed to back. c.1960s
\$400-600

202
Friso Kramer for De Cirkel, eight Revolt side chairs
Grey painted bent sheet steel frames with moulded fiberglass seat and back panels
Designed 1954
HYPERLINK "<http://www.ahrend.com/smartsite.dws?language=EN&ch=COM&id=55825>"
\$3500-4000

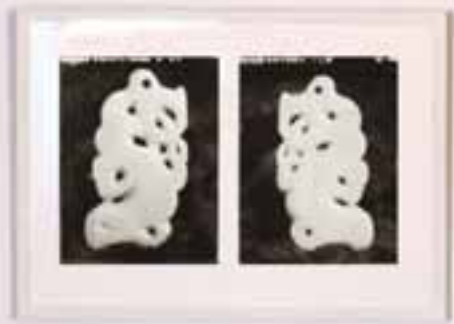
203
Friso Kramer for Ahrend Circular canteen table
Light grey painted bent steel legs with laminate top. Dia.1010mm
\$500-700

204
Friso Kramer for Ahrend Circular canteen table
Black painted bent steel legs with laminate top. Dia.1200mm
\$700-900

205
Overman (Sweden), pair of swivel tub chairs
Upholstered in black vinyl with loose cushioned seat, raised on moulded white plastic pedestal bases, with manufacturer's marks
\$1000-1400

- 206
Circular laminate table
Raised on chrome steel four point star base
Dia. 1000mm
\$800-1000
- 207
Four chairs in the style of Charlotte Perriand
Chrome tube steel framed with slung leather seats and backs
\$1200-1800
- 208
Albert Jacob for Croxtille, France
Four space age moulded white plastic dining chairs and a white laminate circular pedestal based dining table in the style of Eero Saarinen
Dia. 1110mm
\$1800-2800
- 209
Set of six French chrome cantilever framed side chairs
Charcoal faux suede slung upholstery, c.1970s
\$2000-2500
- 210
French 1960s palissander wood dining table
With plate glass top, raised on tapered legs
\$3500-4500
- 211
Gerald Benney for Viners
(Sheffield, England) 43 piece stainless steel cutlery canteen with bark surface handles
Six place setting plus extras
\$500-700
- 212
Modulus low-line teak sideboard
(Danish). Maker's label affixed. c.1950s
2250 x 765 x 430mm
\$2500 - \$3500
- 213
Alexander Michael, black leather bench seat
Twin pod shape raised on leather and cast aluminium goblet form legs
\$800-1200
- 214
Poole Aegean inverted carved walled small bowl
Decorated with egg yolk yellow, amethyst and celadon glazes. Shape 86
\$150-200
- 215
Keith Murray for Wedgwood, two beer jugs and five beer mugs
Moonstone glaze, shapes 3822 and 3810. Printed manufacturer's mark and KM initials, c.1950
\$250-350
- 216
British Eastgate pottery small bowl with elliptical rim
Zambesi pattern white stripes on black ground, bleu celeste interior
\$60-90
- 217
Nils Thorsson for Royal Copenhagen, Fajance hexagonal lidded trinket box
Old Alumina beehive mark, c.1964
\$100-150
- 218
Inge Lise-Kofoed for Royal Copenhagen, Fajance circular trinket box c.1964, (old Alumina beehive mark). Signed with artist's initials
\$75-100
- 219
Marianne Starck for Michael Andersen & Sons (Denmark)
Wall plaque. Marked with maker's three fish motif. c.1960. H.300mm
\$100-200
- 220
Soholm (Denmark) wall plaque c.1950s Height 380mm
\$100-200
- 221
Cream and Chocolate brown glazed German pottery vase
With encircling key pattern
\$35-50
- 222
German pottery capstan shaped ewer vase
Orange luster band with green hoop pattern on brown ground
\$40-60
- 223
Small German pottery vase
Conical with flaring mouth, wax resist pattern
\$20-30
- 224
Speckled eggshell and amber glazed German pottery shoulder vase
With flaring mouth
\$70-100
- 225
German pottery large baluster vase
Orange and white lava/bone glaze
\$50-100
- 226
Sterling silver tapering cylindrical castor
Birmingham assay c.1947
\$125-175
- 227
Jens Quistgaard, pair of green glass candlesticks
\$30-50
- 228
Jens Quistgaard, three cast metal candlesticks
\$80-150
- 229
1950s Italian brass coffee service in the manner of Gio Ponti
\$200-275
- 230
1950s rosewood handled Norwegian stainless steel coffee pot \$80-130
- 231
1960s Norwegian pewter coffee pot \$80-130
- 232
Late 1950s matt black ceramic Arabia teapot
With wooden caned handle. Maker's mark to base
\$60-90
- 233
Danish stainless steel side dish with woven black handle \$20-30
- 234
Stelton plastic thermos jug
Manufacturers mark to base
\$30-40
- 235
Pair of brass Swedish Ystad Metall IAB candlesticks
\$80-120

www.artandobject.co.nz



Subscribe to ART+OBJECT catalogues

A+O produces industry leading auction catalogues, complete with superb photography, insightful essays and news. Over time these become an important archive of auction events and important art and objects. An A+O subscription guarantees you a minimum of 6 catalogues per annum delivered to your preferred address. Subscribe today to ensure you stay informed and receive the best catalogues from the 21st Century auction house.



A+O catalogues will quickly become industry leading records containing superb photography and thought provoking essays from many of today's most respected art and object critics and historians.

An annual subscription guarantees a minimum of six catalogues covering Contemporary art and objects, photography, modern design, artefacts, antiques and popular culture + surprise special sales.

Auction catalogues – subscription rates include gst and postage

New Zealand \$100.00

Australia \$160.00

Rest of the world (airmail fastpost) \$275.00

MR/MRS/MS: _____ SURNAME: _____

POSTAL ADDRESS: _____

STREET ADDRESS: _____

BUSINESS PHONE: _____ MOBILE: _____ FAX: _____

EMAIL ADDRESS: _____

Please find my cheque enclosed ☐ (tick box) or charge my Visa ☐ Mastercard ☐

Card number: _____ Expiry date: _____

Post with cheque to ART+OBJECT, PO Box 68-345 Newton, Auckland 1145, New Zealand.

Fax with credit card details to +64 9 354 4645. Download this form from www.artandobject.co.nz

ART+OBJECT 3 Abbey Street, Newton, Auckland, New Zealand. Telephone +64 9 354 4646, Freephone 0800 80 60 01

ART+OBJECT Conditions of Sale

Please note it is assumed that all bidders at auction have read and agreed to the conditions described on this page. ART+OBJECT directors are available during the auction viewing to clarify any questions you may have.

1 Registration: Only registered bidders may bid at auction. You are required to complete a bidding card or absentee bidding form prior to the auction giving your correct name, address and telephone contact + supplementary information such as email addresses that you may wish to supply to ART+OBJECT

2 Bidding: The highest bidder will be the purchaser subject to the auctioneer accepting the winning bid and any vendor's reserve having been reached. The auctioneer has the right to refuse any bid. If this takes place or in the event of a dispute the auctioneer may call for bids at the previous lowest bid and proceed from this point. Bids advance at sums decreed by the auctioneer unless signaled otherwise by the auctioneer. No bids may be retracted. The auctioneer retains the right to bid on behalf of the vendor up to the reserve figure.

3 Reserve: Lots are offered and sold subject to the vendor's reserve price being met.

4 Lots offered and sold as described and viewed: ART+OBJECT makes all attempts to accurately describe and catalogue lots offered for sale. Notwithstanding this neither the vendor nor ART+OBJECT accepts any liability for errors of description or faults and imperfections whether described in writing or verbally. This applies to questions of authenticity and quality of the item. Buyers are deemed to have inspected the item thoroughly and proceed on their own judgment. The act of bidding is agreed by the buyer to be an indication that they are satisfied on all counts regarding condition and authenticity.

5 Buyers premium: The purchaser by bidding acknowledges their acceptance of a buyers premium of 12.5% + Gst on the premium to be added to the hammer price in the event of a successful sale at auction.

6 ART+OBJECT is an agent for a vendor: A+O has the right to conduct the sale of an item on behalf of a vendor. This may include withdrawing an item from sale for any reason.

7 Payment: Successful bidders are required to make full payment immediately post sale – being either the day of the sale or the following day. If for any reason payment is delayed then a 20% deposit is required immediately and the balance to 100% required within 3 working days of the sale date. Payment can be made by Eftpos, bank cheque or cash. Cheques must be cleared before items are available for collection. Credit cards are not accepted.

8 Failure to make payment: If a purchaser fails to make payment as outlined in point 7 above ART+OBJECT may without any advice to the purchaser exercise its right to: a) rescind or stop the sale, b) re offer the lot for sale to an underbidder or at auction. ART+OBJECT reserves the right to pursue the purchaser for any difference in sale proceeds if this course of action is chosen, c) to pursue legal remedy for breach of contract.

9 Collection of goods: Purchased items are to be removed from ART+OBJECT premises immediately after payment or clearance of cheques. Absentee bidders must make provision for the uplifting of purchased items (see instructions on the facing page)

10 Bidders obligations: The act of bidding means all bidders acknowledge that they are personally responsible for payment if they are the successful bidder. This includes all registered absentee or telephone bidders. Bidders acting as an agent for a third party must obtain written authority from ART+OBJECT and provide written instructions from any represented party and their express commitment to pay all funds relating to a successful bid by their nominated agent.

11 Bids under reserve & highest subject bids: When the highest bid is below the vendor's reserve this work may be announced by the auctioneer as sold 'subject to vendor's authority' or some similar phrase. The effect of this announcement is to signify that the highest bidder will be the purchaser at the bid price if the vendor accepts this price. If this highest bid is accepted then the purchaser has entered a contract to purchase the item at the bid price plus any relevant buyers premium.

Important advice for buyers

The following information does not form part of the conditions of sale, however buyers, particularly first time bidders are recommended to read these notes.

(a) Bidding at auction: Please ensure your instructions to the auctioneer are clear and easily understood. It is well to understand that during a busy sale with multiple bidders the auctioneer may not be able to see all bids at all times. It is recommended that you raise your bidding number clearly and without hesitation. If your bid is made in error or you have misunderstood the bidding level please advise the auctioneer immediately of your error – prior to the hammer falling. Please note that if you have made a bid and the hammer has fallen and you are the highest bidder you have entered a binding contract to purchase an item at the bid price. New bidders in particular are advised to make themselves known to the sale auctioneer who will assist you with any questions about the conduct of the auction.

(b) Absentee bidding: ART+OBJECT welcomes absentee bids once the necessary authority has been completed and lodged with ART+OBJECT. A+O will do all it can to ensure bids are lodged on your behalf but accepts no liability for failure to carry out these bids. See the Absentee bidding form in this catalogue for information on lodging absentee bids. These are accepted up to 2 hours prior to the published auction commencement.

(c) Telephone bids: The same conditions apply to telephone bids. It is highly preferable to bid over a landline as the vagaries of cellphone connections may result in disappointment. You will be telephoned prior to your indicated lot arising in the catalogue order. If the phone is engaged or connection impossible the sale will proceed without your bidding. At times during an auction the bidding can be frenetic so you need to be sure you give clear instructions to the person executing your bids. The auctioneer will endeavour to cater to the requirements of phone bidders but cannot wait for a phone bid so your prompt participation is requested.

ART+OBJECT Absentee Bidding Instructions

Bidding No. For Absentee Bidders at ART+OBJECT'S Auctions
No. 4, 19 July 2007 (Photography)
No. 5, 28 July 2007 (20th Century Design)

This completed and signed form authorizes ART+OBJECT to bid on my behalf at the above mentioned auction(s) for the following lots up to prices indicated below. These bids are to be executed at the lowest price levels possible. I understand that if successful I will purchase the lot or lots at or below the prices listed on this form + the listed buyers premium for this sale (12.5%) and GST on the buyers premium. I warrant also that I have read and understood and agree to comply with the conditions of sale as printed in the catalogue.

No. 4 Auction: Photography

Lot no.	Description	Bid max

No. 5 Auction: 20th Century Design

Lot no.	Description	Bid max

Payment and Delivery ART+OBJECT will advise me as soon as is practical that I am the successful bidder of the lot or lots described above. I agree to pay immediately on receipt of this advice. Payment will be by cash, cheque or bank transfer. I understand that cheques will need to be cleared before goods can be uplifted or dispatched. I will arrange for collection or dispatch of my purchases. If ART+OBJECT is instructed by me to arrange for packing and dispatch of goods I agree to pay any costs incurred by Art+OBJECT. Note: ART+OBJECT requests that these arrangements are made prior to the auction date to ensure prompt delivery processing

MR/MRS/MS: _____ SURNAME: _____

POSTAL ADDRESS: _____

STREET ADDRESS: _____

BUSINESS PHONE: _____ MOBILE: _____ FAX: _____ EMAIL: _____

Signed as agreed: _____

To register for Absentee bidding this form must be lodged with ART+OBJECT prior to the published sale time in one of three ways:

1. Fax this completed form to ART+OBJECT +64 9 354 4645
2. Email a printed, signed and scanned form to: info@artandobject.co.nz
3. Post to ART+OBJECT, PO Box 68-345 Newton, Auckland 1145, New Zealand

ART+OBJECT 3 Abbey Street, Newton, Auckland, New Zealand. Telephone +64 9 354 4646, Freephone 0800 80 60 01

Index of Artists

ARTIST	LOT NO.
Laurence Aberhart	5,46
Narelle Autio	37
Gary Baigent	24,27
Wayne Barrar	23
Harvey Benge	25,26
Gordon H. Brown	20
Richard Collins	28
George Chance	56, 57, 58, 59, 60, 61, 62, 63, 64
Les Cleveland	65, 66, 67
Marti Friedlander	6
Shirley Grace	50, 51
Paul Hartigan	47
Gavin Hipkins	15, 16
Frank Hofmann	53, 54, 55
Megan Jenkinson	69, 70
Jae Hoon Lee	7
Julia Morison	14
Robin Morrison	31
Ann Noble	36
Fiona Pardington	38,43,44,45
Michael Parekowhai	41, 42
Peter Peryer	11, 12
Theo Schoon	22, 32, 33, 34, 35, 68
Ava Seymour	39, 49
Ann Shelton	13, 48
Ross T. Smith	9, 10
Clive Stone	29, 30
Yvonne Todd	8
Ronnie van Hout	1, 2, 3,4, 40
Christine Webster	17,18,19
Ans Westra	52

Coming Soon To A+O...

☺☺POPULAR CULTURE!☺☺

... 11 August



Look out
for more
information
soon!

+ Dharma Punks, original comic art
from Ant Sang of Bro' Town fame,
one of over 40 lots of original
New Zealand and International
comic art.



