

ART  
OBJECT



# THE ENGLISH COLLECTION OF 20TH CENTURY DESIGN

THURSDAY 1 MARCH  
AT 6.30PM

## **ART+OBJECT**

3 Abbey Street  
Newton  
Auckland

PO Box 68 345  
Newton  
Auckland 1145

Telephone: +64 9 354 4646  
Freephone: 0 800 80 60 01  
Facsimile: +64 9 354 4645

info@artandobject.co.nz  
www.artandobject.co.nz

Welcome to ART+OBJECT's first catalogue of 2012. 2011 proved to be a year of milestones for A+O with \$20 million of art sales achieved since the company's launch in May 2007 and the completion of over 1000 valuations in the same period. A+O also recorded three of the top four prices for New Zealand art at auction in the year.

2011 saw A+O established as the leader for major private collections – collectors welcomed significant offerings including The Michael Seresin Collection of 20th Century Photography, The Martin Hill Collection of International Ceramics, The Douglas Lloyd Jenkins Collection of Art and Design, The David and Angela Wright Collection of Modern and Contemporary New Zealand Art and The Ross Morrison Collection of Modern Design.

The feedback from clients, colleagues and collectors for these landmark auction events was most gratifying, particularly the appreciation for the style of catalogues and exhibitions A+O presented.

2012 sees us all similarly blessed with world class collections. This catalogue features a wonderful collection informed by the sensibility of Tim and Natasha English who have dedicated thirty years of their lives to hand-selecting unique examples of superior 20th century design furniture and lighting.

It is a sad fact that the earthquakes of 2011 changed the English's lives forever and they have elected to take a new direction in the future. This catalogue serves as a record to their depth of appreciation for a genre of material, that when presented in its authentic form strikes ever deeper chords with like-minded collectors.

We are fortunate also that as this catalogue was coming together a long standing collector of that much loved New Zealand exemplar of post-war modernist design: Crown Lynn, made the decision to offer her near reference collection of handpotted ceramics.



inspired by design

hoteld**de**brett  
High St Auckland [hoteldebrett.com](http://hoteldebrett.com)



[www.workingstyle.co.nz](http://www.workingstyle.co.nz)

PARNELL

PONSONBY

CHANCERY

WELLINGTON

CHRISTCHURCH

DRESS-SMART ONEHUNGA

DRESS-SMART TAWA



Leighton Norman

PELLEGRINIS ESPRESSO BAR

66 BOURKE STREET, MELBOURNE - 7.10AM

It is early morning in Victoria's cultural capital, and the big city is raising its pulse. With the obligatory pre-work coffee in hand, it's time to psych up for the day ahead. When you are at the mercy of the tumultuous World Currency Markets, it's wise to consider your approach. Amidst the chaos of the Global Financial Crisis, our boy from the Shore - Leighton Norman - has carved himself out a highly successful career as an International Foreign Exchange Dealer.

From humble beginnings as a bank teller in Auckland, this easy going Fijian-Kiwi has worked his way up through the ranks. After dipping his toes in the FX waters in 2003, he is now a Manager of Institutional and Corporate FX sales for one of the biggest banks in Australia. Trading Corporate Market parcels in to the hundreds of millions demands a sharp mind, level head, and nether regions of steel. Leighton Norman is the full package. He has immense business aptitude, elite sporting prowess, and modesty. By all accounts he is a hell of a good guy.

Born in Auckland to a Fijian mother and Pakeha father, Leighton's cultural mix is a winning combination. His achievements in business are matched on the sports field. Having played rugby at club representative and semi-professional levels, Leighton still enjoys the challenge of weekend club rugby.

Although Melbourne prides itself on being a centre of gastronomic excellence, Leighton is very proud of where he is from. It's his Mother's curries, feijoas, family and good friends that pull him back home to us. Working in the fashion capital of Australia, expectations in the wardrobe department are high. With so many variables on the FX dealer's plate, knowing that Working Style has his back is the constant this inspirational achiever can rely on.

They're wearing our gear here.

WORKING STYLE

# Decorative Arts and Design

## Auction Highlights

8 December 2011

Prices realised include  
buyer's premium



### Theo Schoon

A rare impressed stoneware dish  
created in collaboration with Len  
Castle and Steve Rumsey  
\$4395



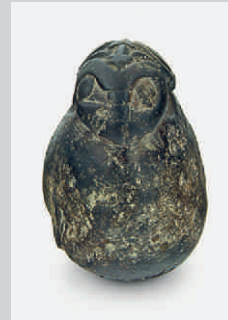
### Len Castle

Sulphurous Bowl, 2010  
\$5565



### Ernst Plischke

Architecturally designed chairs  
with matching coffee table,  
circa 1955  
\$8500



A pre-European mahe  
(fishing sinker)  
\$6445



### Crown Lynn

'Three Faces of Eve' in rare  
yellow glaze  
\$2225



®  
NILS  
HOLGER  
MOORMANN



# FNP

## KATALOG



31 Crummer Road Ponsonby Auckland New Zealand Tel + 64 9 3604290 admin@katalog.co.nz www.katalog.co.nz





## New Collectors Art

Wednesday 29 February

A+O's first New Collectors catalogue of 2012 features a rare suite of wood engravings by E. Mervyn Taylor with provenance to colleague and contemporary William Thomas Bray.

**William Thomas Bray**

Original Black and White photograph of E. Mervyn Taylor working in the Studio vintage gelatin print

inscribed on mount The Sho Card Writer  
210 x 155mm  
\$300 – \$600

*The Rocket – the sexiest  
espresso machine in the world*



TAKE ONE FOR A TEST DRIVE | [WWW.THEROCKET.CO.NZ/DISTRIBUTORS](http://WWW.THEROCKET.CO.NZ/DISTRIBUTORS)



# Asian Art

Wednesday 29 February

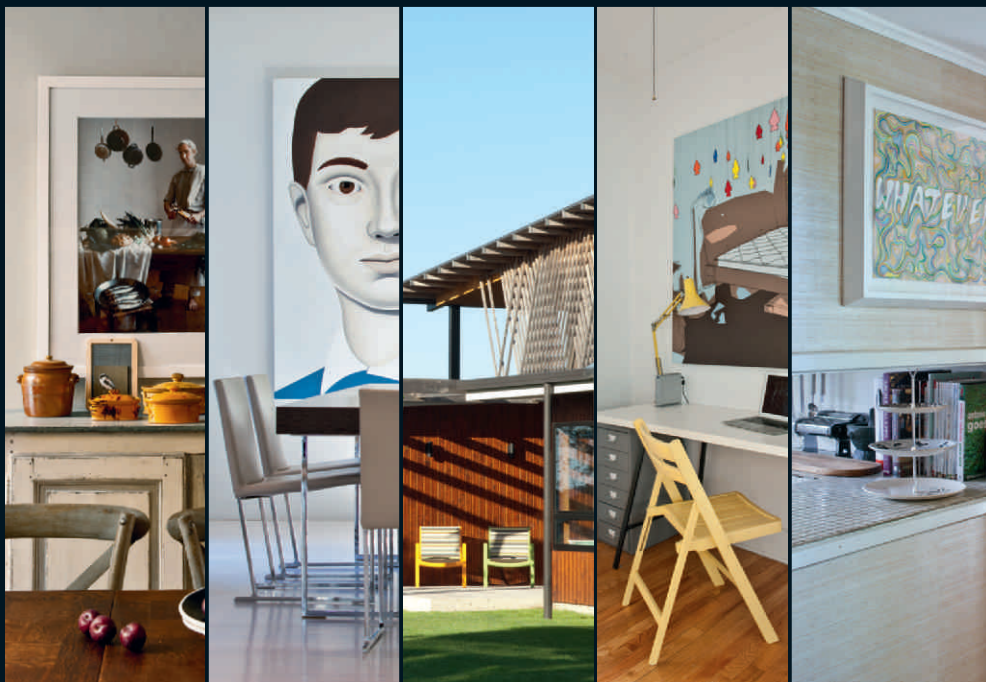
The centrepiece of the catalogue is the Leo Tattersfield Jade Collection, assembled in the 1950s and collected on extensive travels to the east. Tattersfield was one of the first New Zealand businessmen to have access to China after WWII and before the Cultural Revolution. In addition the auction will include a large and rare 18th century polychromed Chinese Buddha, Japanese ceramics and a pair of rhinoceros horn cups with superb provenance.



A Chinese pale celadon jade carving of a finger citron  
H. 45mm  
\$800 – \$1200



A Chinese pale celadon jade pendant, carved with aubergines issuing from a leafy spray  
H. 50mm  
\$800 – \$1200



# the art issue

AT HOME WITH NZ ARTISTS  
AND COLLECTORS

HOME.  
on sale now



# The Russell and Shirley Hodgson Collection of Contemporary Art

22 March

A+O is pleased to present  
one of the finest collections of  
recent years including major  
works by Francis Upritchard,  
Peter Robinson, Dale Frank  
Fiona Pardington, Yvonne  
Todd, Seraphine Pick and  
many more.

Catalogue available 8 March

**Yvonne Todd**  
January  
lightjet print, 2/3  
title inscribed, signed  
and dated 2006 verso  
1360 x 1065mm  
\$8000 – \$15 000





**petebossley**  
ARCHITECTS LTD

**architecture that lifts the spirit**

09 361 2201  
[www.bossleyarchitects.co.nz](http://www.bossleyarchitects.co.nz)





## Important Paintings and Contemporary Art

26 April

Entries invited until March 30th

### **Don Binney**

Sunday Domain

Oil on board, 1969

1320 x 610mm

\$140 000 - \$200 000



FIND OUT  
WHAT THEY'RE  
FIGHTING OVER.



**HISTORY UNDER THE HAMMER**  
PREMIERES SUNDAY 26th FEBRUARY / 7PM

**PRIME**

NOT  
YOUR  
USUAL



## Important Paintings and Contemporary Art

26 April

Entries invited until March 30th

**Michael Parekowhai**  
Atarangi  
powder coated aluminium, 2003  
2800 x 400 x 400mm  
\$70 000 – \$90 000





# THE ENGLISH COLLECTION OF 20TH CENTURY DESIGN

## **Auction**

Thursday 1 March at 6.30pm

## **ART+OBJECT**

3 Abbey Street  
Newton, Auckland

## **Viewing**

Saturday 25 February 11.00am – 4.00pm

Sunday 26 February 11.00am – 4.00pm

Monday 27 February 9.00am – 5.00pm

Tuesday 28 February 9.00am – 5.00pm

Wednesday 29 February 9.00am – 5.00pm

Thursday 1 March 9.00am – 1.00pm

### 1. Bulova Accutron

Computron Driver Watch  
1977. A trapezoid watch case  
with red Plexiglas crystal,  
14kt gold electroplated.  
This is a rare and complete  
example for the discerning  
collector. New, old stock with  
original case, labels, box and  
warranty, including a spare  
battery.

\$700 – \$900

### 2. Bulova Accutron

Space View Watch, 1975.  
Cushion case chapter ring  
Space View 7396 with  
integrated bracelet, and 14kt  
gold electroplated in original  
display case. A fantastic  
example. New, old stock with  
original case, labels and tags.

\$800 – \$1200

### 3. Joe Colombo

1963 Elda Chair, for Comfort.  
White fibreglass reinforced  
polyester, upholstered  
cushions in tan leather.  
This iconic chair is one of  
Colombo's first furniture  
designs; it encapsulates much  
of the early 70's and was  
named after his wife Elda.  
Possibly the only example in  
New Zealand.

Provenance: Purchased in  
Sydney 2000.

\$5000 – \$8000

### 4. Verner Panton

An original Moon Pendant  
light, manufactured by Louis  
Poulson in 1960. The Moon  
Pendant light consists of ten  
ring-shaped aluminum blades  
joined in such a way that they  
can rotate inside each other  
and is based on the ten lunar  
phases.

Illustrated: rear cover.

\$800 – \$1200



1 / 2



3





**5. Robin Day**

Hillestak chairs, for S Hille & Co, UK 1950. A rare set of four side chairs with beech stacking A frames and molded plywood seat and backs. Original stamped numbers to the base.

Provenance: Purchased in Manhattan, New York City 2001.

\$2000 – \$3000

6. An industrial dentist's lamp, weighted cast powder coated base, adjustable chrome stand and spun aluminium shade. Rewired and certified. \$400 – \$600

7. An industrial dentist's lamp, weighted cast powder coated base, adjustable chrome stand and spun aluminium shade. Rewired and certified. \$400 – \$600

8. An industrial designed standard lamp with telescopic arm on a green powdercoated base terminating in four castors. \$300 – \$500

9. An industrial designed standard lamp with telescopic arm on a fixed green powdercoated base. \$250 – \$400

10. An industrial designed wall-mounted lamp with conical shade and telescopic arm \$300 – \$500

11. An industrial designed wall-mounted lamp with conical shade and telescopic arm \$300 – \$500

12. An industrial designed wall-mounted lamp with conical shade and telescopic arm \$300 – \$500

13. An industrial designed standard lamp with telescopic arm on a fixed green powdercoated base. \$250 – \$400





5

#### 14. Finn Juhl

Bwana Chair and Ottoman, Model 152 for France and Son, Denmark 1962. Finn Juhl was the first Danish furniture designer to gain international recognition. The Bwana chair has a sculptural teak form with Danish Elmo leather upholstered seat and back, an exposed frame with carved round armrests. Brass makers label underside.

Provenance: Purchased in Copenhagen, Denmark 2005  
\$5000 – \$7000

#### 15. Harry Bertoia

Wire side chairs, for Knoll Group, USA 1950. Four early and original black wire side chairs with red seat pads. A successful combination of design and sculpture they were conceived by Harry Bertoia as a study in space, form and function.

\$1800 – \$2600



14

#### 16. Ernest Race

BA3 Dining suite. Impressed Made in England to base, 1954. Awarded the Gold Medal at the Milan Triennale. The BA3 was designed for ease of shipping in cast recycled aviation alloy.

This suite consists of four dining chairs, two carvers and matching dining table. The chairs have been reupholstered in Josef Hoffman for Maharam fabric.

\$4000 – \$6000

#### 17. Hans J Wegner

GE-258 Day Bed, for Getama, Denmark 1950. This original oak example of the Hans Wegner day bed is the original 1st production design, with turned legs, storage behind the lift up back, and in linen cotton upholstery.

\$1200 – \$1800

#### 18. Jorgen Bakmark

A finely detailed cube nest of three rosewood modular interlocking tables.

Provenance: Purchased in Copenhagen, Denmark 2005.

\$1500 – \$2500

#### 19. Kai Kristiansen

Reøl System, for Feldballes Møbelfabrik, Denmark 1960. Single bay wall-mounted desk and shelving system in rosewood.

\$800 – \$1400

#### 20. Charles and Ray Eames

DSX, for Herman Miller, USA 1948. Two fibreglass side chairs in translucent soft chocolate, original legs, feet, shock mounts and impressed marks to the base.

\$700 – \$1000

#### 21. Joe Colombo

Vademecum lamp, White model 4034 for Kartell, 1968. Polished stainless steel and plastic, twin light bulbs and sequential light switch. Original bright white colour way.

\$300 – \$500

#### 22. Joe Colombo

Vademecum lamp, model 4034 for Kartell, 1968. Polished stainless steel and plastic, twin light bulbs and sequential light switch.

\$250 – \$400

### 23. Joe Colombo

Vademecum lamp, Black model 4034 for Kartell, 1968. Polished stainless steel and plastic, twin light bulbs and sequential light switch. Rare variant in Black. \$350 – \$600

24. Space Age Lufthansa airport ticketing desk, in molded ply and fibreglass, inspired by Eero Saarinen's Dulles International Airport, Virginia, USA (1958 – 1962). The desk has an original Lufthansa plaque insignia to the underside of base. Provenance: Acquired in Sydney in 1999. \$1200 – \$1800





29



28



25



32 / 31

25. Aesthetic period drawing room set. Four side chairs and one gentleman's armchair all ebonized and upholstered with coil sprung seats. Together with matching octagonal breakfast table raised on turned legs with original castors.

\$1000 – \$2500

26. An impressive Napoleon III bibliotheque ebonized and gilded with glazed cupboard to the upper section flanked by stylized Ionic columns and the base with heavy cornice top with scroll supports on a plain frieze. Base features single drawer with gilded handles, lower cupboard with two coffered doors supported on an inverted architrave base and bun feet. Original decorative brass escutcheons and handles.

Provenance: Purchased in Hamburg, Germany in 2005.  
\$5000 – \$8000

27. An English aesthetic movement style display cabinet, fluted gilded Corinthian columns, brass beaded trim detail, single door with velvet lined shelves.

\$800 – \$1200

**28. Jean Gillon**

A Rare and exceptional rosewood and leather sofa by the significant Brazilian designer Jean Gillon, for Italma Wood Art Brazil, circa mid 1960's. Solid Brazilian rosewood with original twin stitched and buttoned suede cushions, with leather buckled strapping.

\$3500 – \$5000

**29. Arne Norell**

A pair of Inka lounge chairs, for Norell Möbel, Sweden 1964. A timber tension frame with buckled leather saddle seat and back with cushions in original leather and linen upholstery.

Provenance: Purchased in Malmo, Denmark 2005.  
\$2500 – \$4000

**30. Gunni Omann**

Two piece cabinet for Omann Juns Møbelfabrik, Denmark. Superb book-matched Indian and Brazilian rosewood bookcase cabinet. The upper section with latticed glazed doors, the lower section with two frieze drawers above cupboards. Original label attached to the verso. Includes original lock and key.

Provenance: Purchased in Copenhagen, Denmark 2005.  
\$4000 – \$6000

**31. Phillippe Starck**

Hula Hoop Chair, Vitra, Germany 2001. An organic tulip style swivel seat on a 5 point star base with castors. Dark Grey polypropylene with impressed and paper factory marks to the base.

\$400 – \$600

**32. Phillippe Starck**

Hula Hoop Chair, Vitra, Germany 2001. An organic tulip style swivel seat on a 5 point star base with castors. Light Grey polypropylene with impressed and paper factory marks to the base.

\$400 – \$600



36

**33. Attributed to Poul Kjaerholm**

A three seater settee with open dark wooden arms, authentically reupholstered in black Danish Elmo Leather with trademark polished Kjaerholm legs. Manufactured in Denmark circa 1960.

\$1600 – \$1800

**34. Attributed to Poul Kjaerholm**

A pair of armchairs (one male, one female), with open dark wooden arms, authentically reupholstered in black Danish Elmo Leather with trademark polished Kjaerholm legs.

Manufactured in Denmark circa 1960.

\$1800 – \$2400

**35. Attributed to Poul Kjaerholm**

A coffee table with stunning figured top, with trademark polished Kjaerholm legs. Manufactured in Denmark circa 1960.

\$700 – \$1000





The following five lots were all commissioned by the current owner for an inner city Auckland residence. They were purchased from Sue Crockford Gallery, Auckland in 2007.

**36. Julian Dashper**  
Untitled (Chair), 2007.  
\$3000 – \$5000

**37. Julian Dashper**  
Untitled (Chair), 2007.  
\$3000 – \$5000

**38. Julian Dashper**  
Untitled (Chair), 2007.  
\$3000 – \$5000

**39. Julian Dashper**  
Untitled (Chair), 2007.  
\$3000 – \$5000

**40. Julian Dashper**  
Untitled (Rug), 2007.  
Dilana rug  
2000 x 2000mm  
\$7000 – \$12 000





47



48



41



49

**41. Dorothy Thorpe.**  
PAT.473 Monterrey Tea Set,  
for Crown Lynn Potteries,  
New Zealand. Six cups and  
saucers, sugar and creamer  
featuring ball handle.  
\$300 – \$500

**42. Dorothy Thorpe and  
Mark Cleverly**  
PAT.486 Palm Springs Dinner  
Set, for Crown Lynn Potteries,  
New Zealand 24 piece dinner  
set, 4 Large plates, 4 side  
plate, 4 bread plates, 4 bowls,  
4 saucer, 4 cups.  
\$300 – \$500

43. Doris Holland earthenware  
boulder vase. Incised initials  
to base.  
\$150 – \$250

44. Doris Holland, glazed  
stoneware female torso with  
wall-mounted lugs. Incised  
initials to base.  
\$300 – \$500

45. A Doris Holland lidded jar.  
\$200 – \$300

46. Two Doris Holland vases.  
\$100 – \$200

47. Len Castle stoneware  
sedge grass vase. Impressed  
mark to base.  
\$250 - \$350

48. A Juliet Peters large  
stoneware slab-built  
stoneware floor vase.  
\$500 – \$800

**49. Graeme Storm**  
A New Zealand stoneware  
ovoid pottery with incised  
floral relief.  
\$400 – \$600

# Lauren Young Collection of handpotted Crown Lynn

In the 1980s when kitsch was all the rage Lauren Young spotted an elegant piece of Shufflebotham Crown Lynn in an antique store and a thirty year collecting passion began. Attracted to the elegant modernist forms and that unique Crown Lynn cream glaze she began to do some research and found to her surprise that that these pieces were bona fide New Zealand design classics. At this time the appreciation for post war New Zealand design could have been described as being in its nascent stage and as a consequence Lauren was able to pick up unique pieces for bargain prices in the antique and secondhand stores that were a feature of provincial New Zealand.

At this time Lauren was employed by a major multi-national company and she travelled extensively throughout New Zealand; she recalls picking up fine pieces in Invercargill, Napier and the far north.

Today a change of address necessitates the sale of her collection



## **50. Ernest Shufflebotham for Crown Lynn**

rare black glazed, handpotted ovoid vase with concentric banding to the centre. Shape 11 incised to the base together with Crown Lynn factory marks. minor hairline crack to upper section. H. 240mm

\$1000 – \$2000

## **51. Ernest Shufflebotham for Crown Lynn**

Handpotted ovoid vase with concentric banding. Shape 56 incised to the base together with Crown Lynn factory marks. H. 190mm

\$400 – \$600

## **52. Ernest Shufflebotham for Crown Lynn**

Handpotted ovoid vase with concentric banding raised from a circular spreading foot Shape 11 incised to the base together with Crown Lynn factory marks. H.235mm

\$700 – \$1000

## **53. Ernest Shufflebotham for Crown Lynn**

Handpotted ovoid vase with concentric bands to the lower section and cylindrical flared neck to the upper section. Shape 24 incised to the base together with Crown Lynn factory marks. H.180mm

\$350 – \$500

## **54. Ernest Shufflebotham for Crown Lynn**

Handpotted beaker form vase Shape 36 incised to the base together with Crown Lynn factory marks, also with rare original sticker affixed. H.170mm

\$350 – \$500

## **55. Ernest Shufflebotham for Crown Lynn**

Handpotted vase, tapering cylindrical form with concentric banding. Shape 60 incised to the base together with Crown Lynn factory marks. H.180mm

\$350 – \$500



55

61

51

**56. Ernest Shufflebotham for Crown Lynn**

Handpotted vase, tapering cylindrical form raised from a circular foot. Shape 21 incised to the base together with Crown Lynn factory marks. H.185mm. Chip to footring \$100 – \$200

**57. Ernest Shufflebotham for Crown Lynn**

Handpotted ovoid vase, with cylindrical neck section, with six concentric bands to the lower section and banding to the neck. Shape 57 incised to the base together with Crown Lynn factory marks. H.190mm \$400 – \$600



57

55

122

**58. Ernest Shufflebotham for Crown Lynn**

Handpotted ovoid vase with circular foot. Shape 9 incised to the base together with Crown Lynn factory marks. Chip to the footring. H.150mm \$100 – \$200

**59. Ernest Shufflebotham for Crown Lynn**

A pair Handpotted ovoid vases, each with a circular foot. Shape 9 incised to the base together with Crown Lynn factory marks H.110mm \$400 – \$800

**60. Ernest Shufflebotham for Crown Lynn**

Handpotted ovoid vase with circular foot. Shape 9 incised to the base together with Crown Lynn factory marks. H.110mm \$200 – \$300





**61. Ernest Shufflebotham for Crown Lynn**

Handpotted cylindrical vase with concentric bands raised from a circular foot. Shape 23 incised to the base together with Crown Lynn factory marks. H.120mm  
\$300 – \$500

**62. Ernest Shufflebotham for Crown Lynn**

Handpotted cylindrical vase with concentric bands raised from a circular foot. Shape 23 incised to the base together with Crown Lynn factory marks. Hairline crack. H.120mm  
\$50 – \$100

**63. Ernest Shufflebotham for Crown Lynn**

Handpotted ovoid vase with concentric bands with flared upper section. Shape 24 incised to the base together with Crown Lynn factory marks. H.120mm  
\$200 – \$300

**64. Ernest Shufflebotham for Crown Lynn**

Handpotted ovoid vase with concentric bands raised from a circular foot. Shape 15 incised to the base together with Crown Lynn factory marks. H.120mm  
\$300 – \$500

**65. Ernest Shufflebotham for Crown Lynn**

Handpotted ovoid vase with concentric bands to the upper section raised from a circular spreading foot. Shape 13 incised to the base together with Crown Lynn factory marks. H.180mm  
\$250 – \$350

**66. Ernest Shufflebotham  
for Crown Lynn**

Handpotted beaker form with concentric bands to the upper section raised from a circular spreading foot. Shape 18 incised to the base together with Crown Lynn factory marks. H.120mm  
\$150 – \$300

**67. Ernest Shufflebotham  
for Crown Lynn**

Handpotted ovoid vase with central concentric bands raised from a cylindrical foot. Shape 11 incised to the base together with Crown Lynn factory marks  
H.140mm  
\$200 – \$400

**68. Ernest Shufflebotham  
for Crown Lynn**

Handpotted ovoid vase with concentric bands raised from a circular spreading foot. Shape 14 incised to the base together with Crown Lynn factory marks  
H.130mm  
\$350 – \$500

**69. Ernest Shufflebotham  
for Crown Lynn**

Handpotted ovoid vase with concentric bands to the upper section raised from a circular spreading foot. Shape 5 incised to the base  
H.130mm  
\$200 – \$400



**70. Garth Chester**

A rare set of four plywood side chairs with original upholstery.

\$1500 – \$2500

**71. Garth Chester**

A Curvesse Chair with later black lacquered finish.

\$1500 – \$2000

**72. David Trubridge**

Sling. Resolved, abstracted 'hammock-like' form that is both furniture and sculpture, with original seat pad.

\$1500 – \$2500

**73. David Trubridge**

Ika Light, Made in New Zealand. Polycarbonate and hoop pine pendant light shade. New, old stock in box.

\$100 – \$200

**74. David Trubridge**

Coral Light, Made in New Zealand. Hoop pine pendant light shade.

600mm Diameter

\$300 – \$400

**75. A David Trubridge**

designed Petal lamp shade.

\$200 – \$300



77



71



70



78

76. A set of three David Trubridge Design Pebble bowls. Each in original box with organic cotton bag.

\$100 – \$200

77. Rudi Schwartz Dining suite, for Whitmore's Arti Domo, Christchurch 1974. African rosewood book-matched veneered table top with solid legs, includes eight matching chairs in original black vinyl.

\$2000 – \$3500

78. Hans Olsen A pair of Teak Easy 'Baby Bear' Chairs, for IB Koford Larsen, Denmark 1950. Solid teak and steam bent birch plywood frames, newly upholstered in fine brown worsted wool.

Provenance: Purchased in Aarhus, Denmark 2005.

\$2000 – \$3000



79



80



81



82

**79. Poul Cadovius**

Royal System, CADO Møbelfabrik, Denmark 1959. Exceptional Danish design made in Brazilian rosewood. This modular wall shelving system includes three wall panels, four interchangeable cabinets, various shelves and brackets all with the noted angled dowel fixings. Original labelling verso and with original lock and key.  
Provenance: Purchased in Copenhagen, Denmark 2005.  
\$4500 – \$7000

**80. Milo Baughman**

Tub Sofa, for Selig, USA 1960's. A beautifully upholstered tub sofa, with book-matched and steam bent curved African rosewood veneer to the exterior. California designer Milo Baughman was one of the U.S.'s most iconic designers, well known for his use of glamorous materials and clean designs. This example sympathetically upholstered in Old Gold, featuring a singular seat cushion and three pillow-style back cushions.  
\$3000 – \$5000

**81. Arne Vodder**

Bow Chest of Drawers, for Sibast, Denmark 1960. A superb chest of drawers in Brazilian rosewood, featuring his iconic bow tie shaped drawer fascia. Vodder was an architect and designer and is counted among the most influential Scandinavian mid-century designers.  
Provenance: Purchased in Aalborg, Denmark 2005.  
\$3000 – \$5000

**82. Hans Olsen**

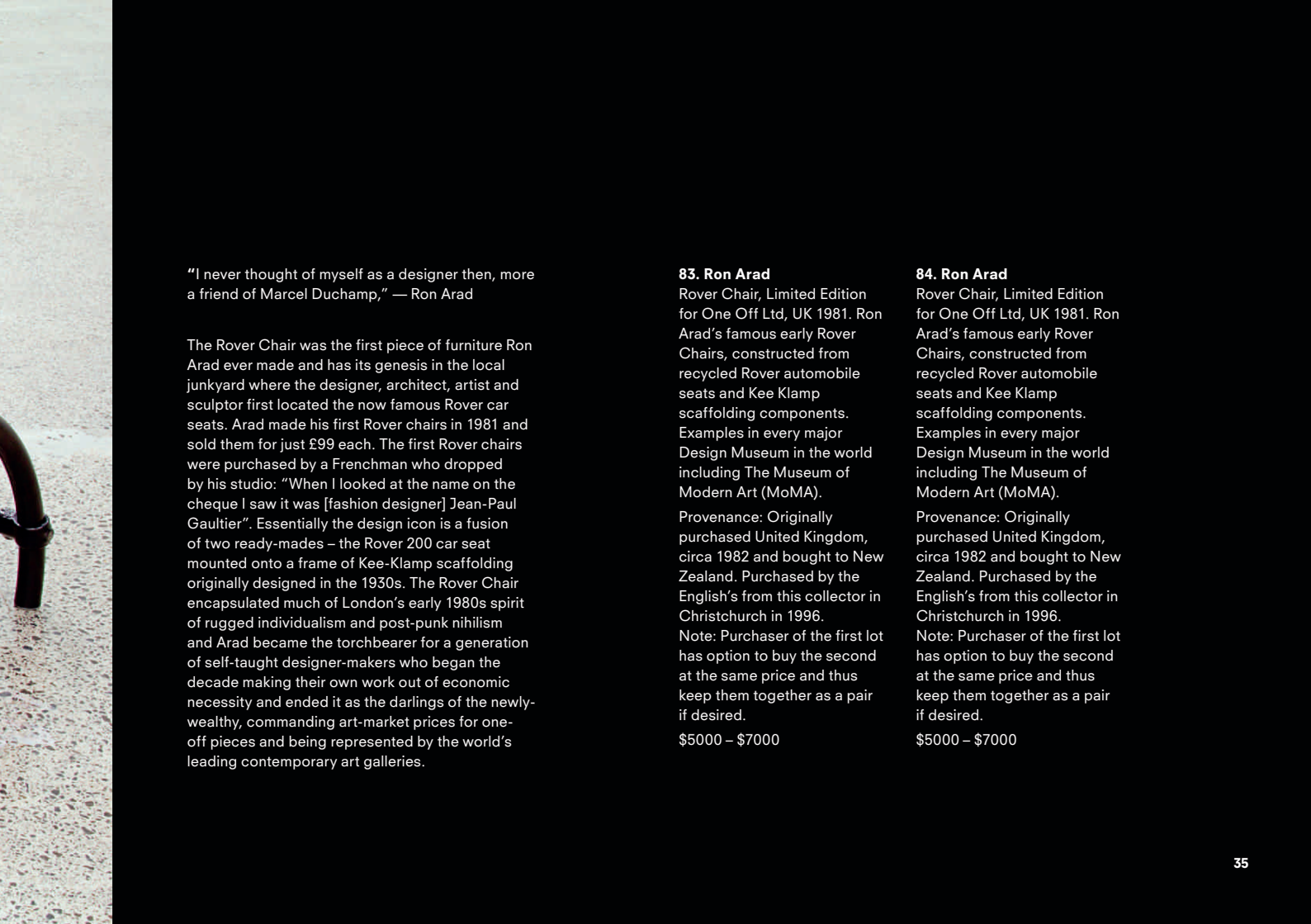
Model 630 and 631 Dining suite, for Frem Rojle, Denmark 1958. Consisting of a circular table and 5 nesting dining chairs (four interlock to skirt of table and one spare), impressed marks and paper labels to underside of chairs and table. Original chocolate vinyl upholstery.  
\$2500 – \$4000











“I never thought of myself as a designer then, more a friend of Marcel Duchamp,” — Ron Arad

The Rover Chair was the first piece of furniture Ron Arad ever made and has its genesis in the local junkyard where the designer, architect, artist and sculptor first located the now famous Rover car seats. Arad made his first Rover chairs in 1981 and sold them for just £99 each. The first Rover chairs were purchased by a Frenchman who dropped by his studio: “When I looked at the name on the cheque I saw it was [fashion designer] Jean-Paul Gaultier”. Essentially the design icon is a fusion of two ready-mades – the Rover 200 car seat mounted onto a frame of Kee-Klamp scaffolding originally designed in the 1930s. The Rover Chair encapsulated much of London’s early 1980s spirit of rugged individualism and post-punk nihilism and Arad became the torchbearer for a generation of self-taught designer-makers who began the decade making their own work out of economic necessity and ended it as the darlings of the newly-wealthy, commanding art-market prices for one-off pieces and being represented by the world’s leading contemporary art galleries.

### **83. Ron Arad**

Rover Chair, Limited Edition for One Off Ltd, UK 1981. Ron Arad’s famous early Rover Chairs, constructed from recycled Rover automobile seats and Kee Klamp scaffolding components. Examples in every major Design Museum in the world including The Museum of Modern Art (MoMA).

Provenance: Originally purchased United Kingdom, circa 1982 and bought to New Zealand. Purchased by the English’s from this collector in Christchurch in 1996.

Note: Purchaser of the first lot has option to buy the second at the same price and thus keep them together as a pair if desired.

\$5000 – \$7000

### **84. Ron Arad**

Rover Chair, Limited Edition for One Off Ltd, UK 1981. Ron Arad’s famous early Rover Chairs, constructed from recycled Rover automobile seats and Kee Klamp scaffolding components. Examples in every major Design Museum in the world including The Museum of Modern Art (MoMA).

Provenance: Originally purchased United Kingdom, circa 1982 and bought to New Zealand. Purchased by the English’s from this collector in Christchurch in 1996.

Note: Purchaser of the first lot has option to buy the second at the same price and thus keep them together as a pair if desired.

\$5000 – \$7000

**85. Ron Arad**

A MEMO inflatable beanbag for Inflate UK. Deflatable bean bag, durable PVC with a one way valve for sucking air out, whilst moulding to the shape of the sitter.

\$400 – \$700

**86. Alberto Rosselli**

Confidential, for Saporiti, Italy 1972. An important sofa and chair designed by Italian Architect, foam dipped steel frame with twin stitched leather upholstery and fibreglass reinforced base. Alberto Rosselli was most well-known for his partnership in the Studio Ponti-Fornaroli-Rosselli, P.F.R.: 1952-1976 architectural practice alongside the Italian designer Gio Ponti.

\$8000 – \$12 000

**87. Paolo Piva**

Andy Sofa, for B&B Italia, Italy 2002. This clever contemporary design incorporates an easy to operate mechanism. Its seats can be moved forward, converting this sofa into a chaise longue, or even, if both seats are moved, to a bed. The back rest can also be tilted for maximum comfort. Original labels to underside.

\$6000 – \$8000

88. A late 1960's Italian freeform Rosewood coffee table with inset Arabescato Carrara marble top on top of elliptical base.

\$1500 – \$2200

**89. Bruno Mathsson**

Pernilla Chair, for Dux, Sweden 1943. The furniture Mathsson designed and created were all given female names. Webbing upholstery and adjustable bovine head bolster. Signed and inscribed on the base.

\$1800 – \$2600



86



87





89

**90. Verner Panton**

An original VP Globe Pendant light, Designed in 1969-70. Unused and complete with the original box and certificate of authenticity.

Illustrated: front cover.

\$2000 – \$3500



91

**91. Arne Vodder**

Tall Cabinet, for Sibast, Denmark 1958. Upright two door rosewood cabinet raised on tapering legs. External doors have solid mitred edges and are fully removable to openly display the shelves. Includes original lock and key.

Provenance: Purchased in Odense, Denmark 2005.

\$2000 – \$3000



88

**92. Arne Vodder**

Model 75 Brazilian Rosewood credenza, for Sibast Möbler, Denmark 1960. Featuring superbly figured top, seamless tambour doors, three bow tie internal drawers, pull-out shelf and adjustable shelves.

Provenance: Purchased in Aarhus, Denmark 2005.

\$3000 – \$5000

93. Industrial plywood drafting chair, swivel mechanism on a steel adjustable base, circa 1940. \$300 – \$500

94. A vintage Industrial German engineer's drafting desk by Leefe with Zucor arm, recently serviced and in working condition. \$1500 – \$2500

**95. Guzzini**

A white Italian table lamp, originally designed circa 1965. A perspex shade on conical spun aluminium base, powder coated. \$400 – \$700

96. A 1960s black and solid brass faux bamboo chandelier with solid cast brass leaf crown, featuring six branches terminating in nine lights. \$800 – \$1200



92

**97. Mario Bellini**

Cuboglass, for Brionvega, Italy 1992. Based on a re-work of the ST 201 from 1969. This re-introduced Cuboglass is housed in an anti-scratch cabinet of crystal glass faces connected by slim perforated metal plates and the facetious cut is absolutely sheer. Inside, it features a black matrix tube for an impressive picture, a broadband loudspeaker,

digital frequency synthesizer, cable tuner and 100 storable programs, SVHS, and SCART. A unique television in original aluminium carry case and cardboard packaging. New, old stock in original packaging and full working order.

\$800 – \$1200

**98. Richard Sapper & Marco Zanuso**

TS 522 Radio, for Brionvega Italy, 2001. The TS 522 is a modern re issue of the "Radio Cubo" cube radio TS-502. The radio is a cult design and a 60s icon object, a part of the permanent collection of the Museum of Modern Art in New York. New, old stock in original packaging and full working order.

\$150 – \$250

**99. John Britten**

A rare William Plunkett style chair, designed and hand-made by the late and notable New Zealand inventor John Britten, well known for his V1000 motorbike design, 1992. Original draylon upholstery.

\$3000 – \$4000

94 / 93



95



99



97



98



100. 1920's Solid Brass ship's mirror, with florets on 4 corners and coloured cabochon crystal centres.

\$200 – \$300

101. Edwardian Cameo mirror with velvet edge and chrome acanthi electric sconce.

\$200 – \$300

102. Venetian style square mirror with rose coloured engraved piquet mirror framed edge.

\$300 – \$500

103. A large and original 1920s French mirror. The mirrored edges are angled and mitred with serpentine edge.

\$900 – \$1500

104. A New Zealand made rosewood bedside chest of drawers with solid contrasting handles and legs. Designed in Christchurch for Whitmore's Arti Domo, 1973.

\$400 – \$600



108



109





105



111

105. New Zealand made rosewood long and low chest of drawers with solid contrasting handles and legs. Designed in Christchurch for Whitmore's Arti Domo, 1973. \$1200 – \$1800

106. New Zealand made rosewood wall mounted king size bed head with built in floating side drawers. Designed in Christchurch for Whitmore's Arti Domo, 1973. \$1000 – \$1400

107. New Zealand made rosewood vanity with solid contrasting pivoting mirror, handles and legs. Designed in Christchurch for Whitmore's Arti Domo, 1973. \$600 – \$900

**108. Michael Payne**  
New Zealand Expo Chair, 1970. Wanganui architect Michael Payne's foray into furniture design led to the creation of one of New Zealand's most notable and celebrated chairs. Mahogany laminate shell upholstered in royal navy velvet on chrome four point star base and castors. \$700 – \$1000

**109. Attributed to Michael Payne**  
Ply Craft side chair in laminated ply on a cast alloy four point metal base. \$600 – \$900

110. New Zealand designed and made 1960s low occasional chair. Upholstered in 'Bespoke Stripe' by Paul Smith for Maharam fabric. \$400 – \$600

111. A pair of New Zealand made 1960s pool-side loungers in orange, cream and black moulded plastic. \$1000 – \$2000

Further lots  
from the  
Lauren Young  
Collection of  
handpotted  
Crown Lynn

**112. Ernest Shufflebotham  
for Crown Lynn**

Handpotted ovoid vase with concentric bands and flared upper section raised from a cylindrical foot. Shape 24 incised to the base together with Crown Lynn factory marks. H.180mm  
\$350 – \$500

**113. Ernest Shufflebotham  
for Crown Lynn**

Handpotted tapering cylindrical vase with concentric bands to the upper section raised from a circular spreading foot. Shape 18 incised to the base together with Crown Lynn factory marks. Chip to the footing. H.140mm  
\$150 – \$250

**114. Ernest Shufflebotham  
for Crown Lynn**

Handpotted tapering cylindrical vase with concentric bands to the upper and lower sections. Shape 38 incised to the base together with Crown Lynn factory marks. H.180mm  
\$300 – \$500

**115. Ernest Shufflebotham  
for Crown Lynn**

Handpotted ovoid vase with concentric bands to the lower section raised from a cylindrical foot. Shape 34 incised to the base together with Crown Lynn factory marks. H.180mm  
\$500 – \$800

**116. Crown Lynn**

Slipcast vase, shape 657  
h. 190mm  
\$50 – \$100

**117. Crown Lynn**

Slipcast ovoid vase, shape 623. h.220mm  
\$50 – \$100

**118. Ernest Shufflebotham  
for Crown Lynn**

Handpotted float bowl  
Shape 55 incised to the base together with Crown Lynn factory marks. D.260mm  
\$150 – \$250

**119. Ernest Shufflebotham  
for Crown Lynn**

Rare handpotted ovoid vase with concentric bands to the shoulder raised from a circular spreading foot. No incised number, possibly a prototype form with Crown Lynn factory marks. H.200mm  
\$1000 – \$2000

**120. Ernest Shufflebotham  
for Crown Lynn**

Rare handcrafted ovoid vase with five concentric bands to the upper section, banded to the shoulder, waist and foot. With unusual dappled finish. No incised number, possibly a prototype form with Crown Lynn factory marks. H.150mm  
\$500 – \$800

**121. Ernest Shufflebotham  
for Crown Lynn**

Handpotted tapering cylindrical vase with concentric bands to the upper and lower sections. Shape 38 incised to the base together with Crown Lynn factory marks. H.230mm  
\$400 – \$800

**122. Ernest Shufflebotham  
for Crown Lynn**

Handpotted ovoid vase raised from a flaring cylindrical foot  
Shape 21 incised to the base together with Crown Lynn factory marks. H.180mm. Chip to the foot  
\$150 – \$250

**123. Ernest Shufflebotham  
for Crown Lynn**

Rare handpotted tapering cylindrical vase with concentric lathed bands to entire surface. No incised number to the base with Crown Lynn factory marks. H.250mm  
\$800 – \$1400

**124. Ernest Shufflebotham  
for Crown Lynn**

Large handpotted bowl with radiating concentric bands raised from a spreading circular foot. Shape 4 incised to the base together with Crown Lynn factory marks. D.260mm  
\$400 – \$600

**125. Ernest Shufflebotham for Crown Lynn**

Handpotted ovoid vase with concentric bands raised from a circular spreading foot. Shape 15 incised to the base together with Crown Lynn factory marks  
H.170mm  
\$350 – \$500

**126. Ernest Shufflebotham for Crown Lynn**

Handpotted ovoid vase with concentric bands to the lower section raised from a cylindrical foot. Shape 34 incised to the base together with Crown Lynn factory marks. H.240mm  
\$750 – \$1200

**127. Ernest Shufflebotham for Crown Lynn**

Handpotted ovoid vase with concentric bands to the lower section and cylindrical flared neck to the upper section. Shape 24 incised to the base together with Crown Lynn factory marks. H.220mm  
\$400 – \$600

**128. Ernest Shufflebotham for Crown Lynn**

Handpotted ovoid vase with concentric bands to the lower section raised from a cylindrical foot. Shape 34 incised to the base together with Crown Lynn factory marks. Extensive crazing.  
H.190mm  
\$250 – \$400

**129. Ernest Shufflebotham for Crown Lynn**

Handpotted ovoid vase, with cylindrical neck section, with concentric bands raised from a circular spreading foot. Shape 15 incised to the base together with Crown Lynn factory marks. H.180mm  
\$400 – \$800

**130. Keith Murray for Wedgwood**

Moonstone glazed tapering conical bowl raised on a circular foot. KM factory mark to the base. d.150mm  
\$350 – \$500



119



120



123



124



144

**131. Hans Wegner**

GE-375 Stools, for Getma, Denmark 1950-60. Natural coloured oak stools with upholstered cushions in bovine. Impressed marks to underside.

\$1000 – \$1500

**132. Finn Juhl**

Danish teak coffee table with leather insert, including his signature Rosewood paw feet and finely detailed bevelled lip edges.

Provenance: Purchased in Aarhus, Denmark 2005.

\$800 – \$1200

**133. Memphis Group**

'The Lovers'

A two piece interlocking fibreglass Memphis sculpture in 70s Tangerine Orange. Purchased at the Milan Furniture Fair in 1972.

\$800 – \$1200



133



131



134



135



132

**134. Henry Rosengren Hansen**

Model 38 Rosewood sideboard, for Brande Møbelfabrik, Denmark 1960. Superbly figured Brazilian rosewood with fine detailing including unique leg profile joint, two sets of internal drawers with dovetail joints, complex bevelled and mitred drawer fronts and sliding doors with elegant organic single carved finger pulls.

Provenance: Purchased in Odense, Denmark 2005.

\$3500 – \$5000

**135. Richard Schultz**

1966 Collection Table, for Knoll. The collection was designed in 1966 at the request of Florence Knoll, who required well-designed outdoor furnishings that would withstand the corrosive salt air at her home in Florida. Cast alloy frame with porcelain on steel top.

Provenance: Purchased from Shapiro's Auction House in Woollahra, Sydney 2004.

\$1000 – \$1500



**136. Bengt Ruda**

Occasional chair for NK furniture, Holland 1953. Ebonised scissor form legs and upholstered in blue Kvadrat felted wool.

\$800 – \$1200

**137. Eero Saarinen and Charles Eames**

Executive side chairs, for Knoll Group, USA 1948. This pair has the original laminated steam bent beech legs and plywood shell, a rare collaboration by Saarinen and Eames in 1948 for the New York World Fair. Reupholstered in Saville Row wool designed by Jasper Conran for Ralph Lauren. Provenance: Purchased in Manhattan, New York City 2001.

\$1000 – \$1500

**138. Yngve Ekstrom**

Teak embossed cabinet with ebonized legs and brass cap feet. Features fitted interior sliding trays and shelves and with original lock and key.

\$1800 – \$2500

139. Danish set of three Rosewood nesting tables, circa 1950. Sliding suspended nest, turned tapered legs and stretchers with figured tops and mitred solid edges.

\$600 – \$900

**140. Grete Jalk**

Sofa Table, for France and Daverkosen, Denmark 1950. Provenance: Purchased in Aarhus, Denmark 2005.

\$800 – \$1200

141. A six part Danish rosewood display cabinet. Two units feature lower cabinets and upper cabinets with sliding doors and adjustable shelves whilst the third unit features a lower unit with drawers and an upper unit with open shelves.

\$2000 – \$3500

**142. Don Chadwick and Bill Stumpf.**

Aeron chair, for Herman Miller, USA 1994. An imaginative design with fast-forward ergonomics and a look so distinctive that it is probably the only office chair that people can identify by name.

\$800 – \$1200



136



142

143



143. A pair of 1950s French prototype arm chairs. Moulded and laminated in plywood with walnut veneer. Nip waist backs with gull wing arms.

Provenance: Purchased from Sotheby's, London in 1996  
\$3000 – \$5000

144. An original French 1920s Escritoire or Writing Desk. Burr walnut top with internal letter divisions and a secret drawer. Slender turned ebonised legs united by a crossed stretcher with brass inlay and cup feet.  
\$1200 – \$2000

145. Nagel candlesticks, made in Germany. Twenty one interlocking pieces in cast alloy with rare flame bronze finish. Original label.  
\$700 – \$900

145a. Nagel candlesticks, made in Germany. Twenty one interlocking pieces in cast alloy with rare flame bronze finish. Original label.  
\$550 – \$750



148



145b

**145b. Phillipe Starck**

A Flos Gun bedside lamp manufactured in Italy. Gold finish raised on a circular base with original black shade. Impressed inscription reads Happiness is a Hot Gun. \$400 – \$800

**146. Isamu Noguchi**

A UF4 – 33N Akari Floor Lamp designed by Noguchi in 1951 and handmade for a half century by the original manufacturer in Gifu, Japan, the paper lanterns are a harmonious blend of Japanese handcraft and modernist form. Created from handmade washi paper and bamboo ribbing, supported by a metal \$700 – \$1200

**147. Isamu Noguchi**

A UF4 – L8 Akari Floor Lamp designed by Noguchi in 1951 and handmade for a half century by the original manufacturer in Gifu, Japan, the paper lanterns are a harmonious blend of Japanese handcraft and modernist form. Created from handmade washi paper and bamboo ribbing, supported by a metal \$700 – \$1200

**148. Ingmar Relling**

A Siesta Chair and matching ottoman manufactured by Westnofa, circa 1965. Bent rosewood frame with black leather cushions. \$800 – \$1200

149. A French Art Deco sideboard in Macassar ebony with an open compartment over cupboards, flanked by small drawers.

\$4000 – \$6000

150. An elegant Italian 1950s dining table with glass top. In the manner of Ico Parisi.

\$2000 – \$3000



151. An Italian vintage standard lamp with brass base and fittings.  
\$800 – \$1200

**152. Ross Lovegrove**  
A softcrete Sofa and Cube Ottoman, manufactured by Gufram in Italy.  
\$3000 – \$5000

153. no lot.

Tord Boontje's designs are held in the collections of many of the world's premier museums including the Tate Modern in London and he has been awarded numerous international design awards.

**154. Tord Boontje**  
Icarus lights, for Artecnic, USA  
Poetic, lightweight and immaculately white, Icarus reminds us of the human aspiration to flight: a link between us and the celestial light. Constructed from multiple layers of extruded polyester cut to resemble a bird's wing.  
\$200 – \$300

**155. Tord Boontje**  
Midsummer Light in Pink, for Artecnic, USA. Layers of forest creatures and foliage, these Midsummer Light adds an enchanting glow to any room. Midsummer Light is constructed from two layers of cut Tyvek, a super-resistant paper material, draped over a protective heat-blocking cone.  
\$200 – \$300

**156. Tord Boontje.**  
Midsummer Light in Fading Red, for Artecnic, USA. Layers of forest creatures and foliage, these Midsummer Light adds an enchanting glow to any room. Midsummer Light is constructed from two layers of cut Tyvek, a super-resistant paper material, draped over a protective heat-blocking cone.  
\$200 – \$300

**157. Tord Boontje**  
Table Stories, for Authentics, Germany 2005. A Large Grey Spider Bowl. New, Old stock. The graphic images are applied as an underglaze print. This is an old ceramic technique by which the image is first fired onto the ceramic body and second a clear glaze is applied on top.  
\$40 – 50

**158. Tord Boontje**  
Table Stories, for Authentics, Germany 2005. 2 Grey Butterfly dishes. New, Old stock. The graphic images are applied as an underglaze print. This is an old ceramic technique by which the image is first fired onto the ceramic body and second a clear glaze is applied on top.  
\$20 – 30

**159. Tord Boontje**  
Table Stories, for Authentics, Germany 2005. 6 Grey Bunny Plates. New, Old stock. The graphic images are applied as an underglaze print. This is an old ceramic technique by which the image is first fired onto the ceramic body and second a clear glaze is applied on top.  
\$60 – 70

**160. Birgit Østergaard**  
B3 Pendant light, Denmark. A woven Canvas Polyester sail cloth, extremely light floating cloud like pendant. New, old stock in original box.  
220 Volt. Max 60 W.  
\$50 – \$100

**161. Harri Koskinen**  
Block Lamp, Design Stockholm House, Finland 1996. This lamp became a design classic as soon as it was launched in 1996, and has won the Excellent Swedish Design Award in 1998, the Design Plus Award at the Ambiente Trade Fair in Frankfurt, Best New Product at the accent show in New York in 1999 as well as becoming part of MOMA's permanent collection in 2000.  
\$250 – \$350

162. A Holmegaard industrial light in anodized spun aluminium from the 'Country' series.  
\$250 – \$400

**163. Arne Jacobsen**  
A Swan Chair manufactured under license by Fritz Hansen. With brown wool weave upholstery and manufacturer's label affixed to base.  
\$1200 – \$1800







164

**164. Marco Zanuso**

A Lady Armchair. Originally designed in 1951 for Arflex. This example in khaki wool blend upholstery.

\$1500 – \$2000

**165. Charles and Ray Eames**

DAR (Dining Armchair Rod) manufactured by Herman Miller. Original brown wool blend upholstery.

\$300 – \$500

**166. Ludwig Mies van der Rohe**

Barcelona Daybed, originally designed in 1929 for the German Pavilion at the International Exhibition in Barcelona. This example manufactured under license by Knoll International.

\$3000 – \$6000

**167. Ludwig Mies van der Rohe**

A pair of M. R 20 Chairs with black leather upholstery and nickel plated tubular steel framing.

\$800 – \$1200



163

**168. Charles and Ray Eames**

A pair of original Eames Aluminium Group chairs manufactured by Herman Miller.

\$1800 – \$3000

**169. Gaetano Pesce**

An UP Chair and matching Ottoman manufactured by B & B Italia. In black stretch covered fabric over moulded polyurethane foam. Example illustrated on the cover of 1000 Chairs (Taschen).

\$2000 – \$4000

**170. Hans Wegner**

Side Chair. Teak frame with woven cane seat and cresting piece, in traditional arts and crafts style. Impressed monogram and manufacturer's No. 0603.

\$800 – \$1200

**171. Marcel Breuer**

Wassily or Model B3 Chair. Originally designed in 1925. Manufacturer unknown.

\$500 – \$800

172. A circular black ottoman in woven cane basket weave design together with a white laminate stool.

\$100 – \$200

**173. Rodolfo Dordoni**

A circular Caulfied Coffee Table manufactured by Minotti, Italy. Chromium plated steel with inset bevelled glass top.

\$1000 – \$2000

174. A circular contemporary black coffee table. Designer unknown.

\$300 – \$500

175. A lowline contemporary sofa. Of floating, rectangular form and in black lacquer with marine wool blend upholstery. Note: The first purchaser of these three matching couches will be offered the right of purchasing the next two lots at the equivalent bid price.

\$1000 – \$2000

176. A lowline contemporary sofa. Of floating, rectangular form and in black lacquer with marine wool blend upholstery.

\$1000 – \$2000

177. A lowline contemporary sofa. Of floating, rectangular form and in black lacquer with marine wool blend upholstery. \$1000 – \$2000

178. A Heywood Wakefield midcentury solid American birch dining table, model M165G. Together with six matching chairs, model M154A in original sea green upholstery. \$1800 – \$3000

179. A vintage Lotus 1950s Art Deco Revival shop display shelving unit comprising of four glass tiers supported by blackened cylindrical supports. Manufacturers label affixed to front. Height: 1680mm. \$800 – \$1200

180. A Parker Knoll extending teak dining table and four matching chairs, upholstered in black vinyl. \$1200 – \$2000

181. White fibreglass and spun aluminium egg chair with white vinyl and original yellow woven crepe wool upholstery, manufactured in New Zealand. Provenance: Purchased from Bell's Auction House in Kaiapoi in 2001. \$750 – \$1100

182. Original Danish teak coffee table with secondary shelf and four sliding drawers. \$600 – \$900

183. A classic Danish teak coffee table. \$400 – \$600

**184. Rohe Noorwolde**  
Easy chair made in Holland. African style stained cane and natural leather upholstery. \$400 – \$600

185. A single Danish amoebic form cane chair. \$600 – \$900



166



168



189

**186. Waring and Gillow**

An English breakfront cabinet, circa 1905. Solid mahogany with inlaid fronts of plum pudding mahogany, box wood and pear. This large manrobe is assembled in six components, two central doors with internal linen drawers and four lower external drawers, flanking tall cupboards above single low drawers. Original gilded handles with fret work back plates, including key. Stamped with the English marks 'by appointment to the King'.

\$2500 – \$4000

**187. Antonio Citterio**

The Ad Hoc Desk, Vitra, Germany 1994. Executive office desk that can be raised and lowered to suit the end user, with left or right hand cable tray and shelf.

\$800 – \$1400

188. Tripolina Vittorian Viganò  
Original Italian folding butterfly chairs. Stained timber and metal frames with reversible heavy natural linen and leather covers.

\$600 – \$800

189. German Art Deco cabinet. A splayed curved cornice top, featuring figured walnut main door, with serpentine and mitred concave edge mirror 2nd door, twin bevelled drawers on square Biedermeier style legs.

\$1800 – \$2600

190. A set of four Frem Rohjle dining chairs with original black vinyl upholstery. Impressed marks to underside of chairs.

\$600 – \$1000

**191. Otto Bauer**

Gluvase, for Holmegaard, Denmark 1960s. Over-sized, rare cobalt bottle vase with original label to shoulder. Height: 495mm

\$500 – \$800



170



182 / 145 / 145a



**192. James Irvine**

Earth, for Arabia, Finland  
2002. Anodised spun  
aluminium planter on ceramic  
tray in original box. New, old  
stock in original packaging.  
\$100 – \$160

**193. Alberta Meda**

Water, for Arabia, Finland  
2002. Ceramic and stainless  
steel jug, ceramic tray,  
stainless funnel water filter  
and two glasses. New, old  
stock in original packaging  
with carbon water filter.  
\$300 – \$400

**194. Alvar Aalto**

Aalto Vase, for iittala,  
Finland. A modern white  
and red cased Aalto vase to  
celebrate the 70th anniversary  
of the timeless Aalto vase.  
The vase comes inside a  
commemorative 55% linen  
/ 45% cotton embroidered  
white pouch. Every Aalto  
vase is still crafted by its  
original mouth-blown process  
by Finland's most skilled  
glassblowers at Iittala.  
Discontinued New, old stock  
in original packaging  
\$350 – \$450



195



200

**195. Bjorn Weckstrom**

Rare Ice Tounge pendant in  
Sterling Silver from the Space  
Series, Lapponia, Finland  
1970.

Bjorn Weckstrom, founded  
the company that was  
eventually named Lapponia  
in 1963. Over the decades,  
Weckstrom has won many  
international design awards  
and refined and broadened  
his styles. In 1970, he started  
to incorporate acrylic into  
his jewellery and designs.  
This neck piece is from the  
Space series, which was part  
of a range he designed for  
Princess Lea in 'Star Wars'.  
Ice Tounge is hand-crafted  
sterling silver and acrylic and  
has a biomorphic form, the  
front has a "sand blasted"  
texture; the acrylic inset is  
clear with an internal glowing  
blue. The hand-forged link  
chain has two strands with the  
long hook clasp.  
\$1600 – \$1800

**196. Bjorn Weckstrom**

This ring is part of the Flame  
Bronze Collection: 8 rings,  
7 pendants, 3 bracelets  
and 4 belts. All these were  
produced for a short period  
in the 70s only. The collection  
is dark and heavy. Names  
for the pieces have clear  
military overtones from his  
stay in America. The rings  
were called Pentagon, Klimm,  
Scarab, B-52, Isotta Frascini,  
Heinkel, Henry J and Standard  
Oil. This ring is called  
'Heinkel' and made of cast  
bronze.  
\$500-\$700

**197. Bjorn Weckstrom**

This ring is part of the Flame  
Bronze Collection: 8 rings,  
7 pendants, 3 bracelets  
and 4 belts. All these were  
produced for a short period  
in the 70's only. The collection  
is dark and heavy. Names  
for the pieces have clear  
military overtones from his  
stay in America. The rings  
were called Pentagon, Klimm,  
Scarab, B-52, Isotta Frascini,  
Heinkel, Henry J and Standard  
Oil. This ring is called 'Klimm'  
and made of cast bronze.  
\$400-600

198. Stelton candlestick together with a Stelton knife opener, both in original boxes.  
\$40 – \$70

199. An original 1970's Fibre Optic lamp. The base is a brass sphere with changeable white and black glass fibre filaments.  
\$125 – \$200

200. Piquetware Tea set, UK 1947-49. Exclusive, modern design made from Magnalium. An alloy consisting of aluminum and magnesium especially developed for Picquet Tableware which is polished (not plated). Selected for the 'British Can Make It' Exhibition in London in 1951. This initial production set consists of T6 Tea pot, J6 Water Jug, C6 Creamer, SB Sugar, R6 Tray.  
\$400 – \$600

201. Three 1960s Phillips acoustic hanging speakers.  
\$100 – \$200

**202. Phillippe Starck**  
A Miss Sissi Lamp in original box.  
\$100 – \$200

203. White 1950's Bakelite phone, pull out number tray and chrome dial, in excellent condition.  
\$200 – \$300

204. Arts & Crafts, English Oak side chair in the style of Liberty & Co. Platted basket weave back with bovine upholstered seat.  
\$350 – \$500

**205. Maarten Van Severen**  
A M.V.S Chaise for Vitra, Germany. Moulded plastic with adjustable leather head rest on tubular chromium plated legs.  
\$600 – \$1000

206. A New Zealand made coffee table in oak with elliptical top and mosaic inlaid tiles raise on shaped legs.  
\$300 – \$500

207. A white fibreglass 1970s chair in the style of Eero Aarnio's Pastil Chair. Likely manufactured in New Zealand.  
\$400 – \$800

208. Art Deco tulip standard lamp.  
\$300 – \$500

209. A 1980s New Zealand contemporary armchair. Solid Rimu back and seat plane with leather upholstered head rest, solid oak ebonised arms. Brass furniture maker's plaque on the outside back initialled M. B.  
\$700 – \$1200

210. Nine boxes of Romeo & Julia Candles designed by Pauli + Pankow for Authentics Germany.  
\$100-\$200

211. Nine boxes of Romeo & Julia Candles designed by Pauli + Pankow for Authentics Germany.  
\$100-\$200



212. Nine boxes of Romeo & Julia Candles designed by Pauli + Pankow for Authentics Germany.

\$100-\$200

**213. Helena Rubinstein**

original illuminated shop sign, for New Zealand's iconic 1960s makeup manufacturer. Red graphics on white Perspex encased in aluminium surround with plug and cable.

\$150 – \$250

214. Two Victorian gilded glass panels originally from the Dunedin Stock Exchange with stylized foliate patterns. 1410 x 540mm

\$200 – \$400

215. A pair of large turned swallow neck Danish rosewood candlesticks.

\$80 – \$120

216. Six assorted large turned swallow neck Danish rosewood candlesticks

\$150 – \$250

217. Five assorted large turned swallow neck Danish rosewood candlesticks

\$120 – \$180

218. no lot.

219. The Toot-a-Loop Radio or Panasonic R-72 is a novelty radio made by Panasonic in the early 1970s. The Australian and New Zealand models had the badging National Panasonic and were advertised as a "Sing-O-Ring" radio. The advertisement song went "It's an S it's an O it's a crazy radio! Toot a loop!"

\$50 – \$100

220. A Texas instruments electronic calculator, circa 1970. In original box.

\$50 – \$100

**221. Angela Singer**

Lamb sculpture. Signed and dated 2002.

\$300 – \$500

222. A pair of oval bird dioramas with ebonized frames and convex glass dating to the 1930s.

\$600 – \$900

223. Six rolls of Sanderson Damask gold and chocolate flocked wallpaper, circa 1960s. In original boxes.

\$400 – \$800



215 / 216



191



209

**224. Timo Sarpaneva**

Festivo for iittala, 1968, Finland. A pair of frosted cast glass candlesticks.

\$150 – \$250

225. A Swedish Orrefors glass vase. Ovoid shape with raised smooth optical discs. Engraved base and original paper label.

\$100 – \$200

**226. David Trubridge**

Coral Light, Made in New Zealand. Hoop pine pendant light shade. New, old stock in box.

800mm Diameter

\$300 – \$400

227. A Vicke Lindstrom green smoke glass vase of tapering conical form. Engraved to the base.

\$200 – \$300

228. 1960's Azure Blue glass pendant light shade.

\$80 – \$150

229. Small Poole pottery plate in moulded fish form together with small glazed porcelain scumpture.

\$20 – \$40

**230. Guzzini.**

A Clear acrylic salt and pepper shakers in original box, in excellent condition.

\$30 – \$50

**231. Nola Baron**

New Zealand studio pottery, square pottery dish with cream glaze and internal green glass bottom.

\$30 – \$50

232. A hand-potted Fredricka Ernstine cylindrical ribbed pottery vase.

\$25 – \$50

233. Shelley jug with chinoiserie design together with Air New Zealand, for Crown Lynn Potteries butter dish.

\$20 – \$40

234. A Doris Dutch studio pottery, shallow dish with blue glaze well.

\$30 – \$50

235. New Zealand Raku fired teapot and two cups with abstract painted design.

\$30 – \$50

**236. Tord Boontje**

FOREVER, for Artecnic, USA. Laser cut polished flat packed stainless steel brown jar dresses.

Quantity of fourteen. New, old stock.

\$100 - \$200

**237. Tord Boontje**

HERE for Artecnic, USA. Laser cut polished flat packed stainless steel brown jar dresses. Quantity of 21. New, old stock.

\$70 – \$100

**238. Tord Boontje.**

Garland Light Black, for Artecnic, USA. The Garland mesmerizes with its delicately etched floral patterns.

Garland Light is made from a continuous metal strand that is wrapped around a light bulb. Garland is included in the permanent collection of MoMA New York and the Victoria and Albert Museum London. Quantity of seven in original boxes.

\$100 – \$200

**239. Tord Boontje.**

Garland Light Rust, for Artecnic, USA 20??The Garland mesmerizes with its delicately etched floral patterns. Garland Light is made from a continuous metal strand that is wrapped around a light bulb. Garland is included in the permanent collection of MoMA New York and the Victoria and Albert Museum London. Quantity of five in original boxes.

\$100 – \$200

240. An antique cane linen basket.

\$100 – \$200

241. A Crackle glazed New Zealand studio pottery orb vase. Inscribed initials D. M to the base. Together with N.Z pottery teapot, jug and cups and saucers.

\$100 – \$200

242. Two 1960s bed side lamps. One small globe, nickel plated with magnetic mechanism. The other acron shaped and turned in wood.

\$200 – \$300





# Conditions of sale

Please note: it is assumed that all bidders at auction have read and agreed to the conditions described on this page.

ART+OBJECT directors are available during the auction viewing to clarify any questions you may have.

**1. Registration:** Only registered bidders may bid at auction. You are required to complete a bidding card or absentee bidding form prior to the auction giving your correct name, address and telephone contact + supplementary information such as email addresses that you may wish to supply to ART+OBJECT

**2. Bidding:** The highest bidder will be the purchaser subject to the auctioneer accepting the winning bid and any vendor's reserve having been reached. The auctioneer has the right to refuse any bid. If this takes place or in the event of a dispute the auctioneer may call for bids at the previous lowest bid and proceed from this point. Bids advance at sums decreed by the auctioneer unless signaled otherwise by the auctioneer. No bids may be retracted. The auctioneer retains the right to bid on behalf of the vendor up to the reserve figure.

**3. Reserve:** Lots are offered and sold subject to the vendor's reserve price being met.

**4. Lots offered and sold as described and viewed:** ART+OBJECT makes all attempts to accurately describe and catalogue lots offered for sale. Notwithstanding this neither the vendor nor ART+OBJECT accepts any liability for errors of description or faults and imperfections whether described in writing or verbally. This applies to questions of authenticity and quality of the item. Buyers are deemed to have inspected the item thoroughly and proceed on their own judgment. The act of bidding is agreed by the buyer to be an indication that they are satisfied on all counts regarding condition and authenticity.

**5. Buyers premium:** The purchaser by bidding acknowledges their acceptance of a buyers premium of 15% + GST on the premium to be added to the hammer price in the event of a successful sale at auction.

**6. ART+OBJECT is an agent for a vendor:** A+O has the right to conduct the sale of an item on behalf of a vendor. This may include withdrawing an item from sale for any reason.

**7. Payment:** Successful bidders are required to make full payment immediately post sale – being either the day of the sale or the following day. If for any reason payment is delayed then a 20% deposit is required immediately and the balance to 100% required within 3 working days of the sale date. Payment can be made by Eftpos, bank cheque or cash. Cheques must be cleared before items are available for collection. Credit cards are not accepted.

**8. Failure to make payment:** If a purchaser fails to make payment as outlined in point 7 above ART+OBJECT may without any advice to the purchaser exercise its right to: a) rescind or stop the sale, b) re offer the lot for sale to an underbidder or at auction. ART+OBJECT reserves the right to pursue the purchaser for any difference in sale proceeds if this course of action is chosen, c) to pursue legal remedy for breach of contract.

**9. Collection of goods:** Purchased items are to be removed from ART+OBJECT premises immediately after payment or clearance of cheques. Absentee bidders must make provision

for the uplifting of purchased items (see instructions on the following page)

**10. Bidders obligations:** The act of bidding means all bidders acknowledge that they are personally responsible for payment if they are the successful bidder. This includes all registered absentee or telephone bidders. Bidders acting as an agent for a third party must obtain written authority from ART+OBJECT and provide written instructions from any represented party and their express commitment to pay all funds relating to a successful bid by their nominated agent.

**11. Bids under reserve & highest subject bids:** When the highest bid is below the vendor's reserve this work may be announced by the auctioneer as sold 'subject to vendor's authority' or some similar phrase. The effect of this announcement is to signify that the highest bidder will be the purchaser at the bid price if the vendor accepts this price. If this highest bid is accepted then the purchaser has entered a contract to purchase the item at the bid price plus any relevant buyers premium.

# Important advice for buyers

The following information does not form part of the conditions of sale, however buyers, particularly first time bidders are recommended to read these notes.

**A.**  
**Bidding at auction:** Please ensure your instructions to the auctioneer are clear and easily understood. It is well to understand that during a busy sale with multiple bidders the auctioneer may not be able to see all bids at all times. It is recommended that you raise your bidding number clearly and without hesitation. If your bid is made in error or you have misunderstood the bidding level please advise the auctioneer immediately of your error – prior to the hammer falling. Please note that if you have made a bid and the hammer has fallen and you are the highest bidder you have entered a binding contract to purchase an item at the bid price. New bidders in particular are advised to make themselves known to the sale auctioneer who will assist you with any questions about the conduct of the auction.

**B.**  
**Absentee bidding:** ART+OBJECT welcomes absentee bids once the necessary authority has been completed and lodged with ART+OBJECT. A+O will do all it can to ensure bids are lodged on your behalf but accepts no liability for failure to carry out these bids. See the Absentee bidding form in this catalogue for information on lodging absentee bids. These are accepted up to 2 hours prior to the published auction commencement.

**C.**  
**Telephone bids:** The same conditions apply to telephone bids. It is highly preferable to bid over a landline as the vagaries of cellphone connections may result in disappointment. You will be telephoned prior to your indicated lot arising in the catalogue order. If the phone is engaged or connection impossible the sale will proceed without your bidding. At times during an auction the bidding can be frenetic so you need to be sure you give clear instructions to the person executing your bids. The auctioneer will endeavour to cater to the requirements of phone bidders but cannot wait for a phone bid so your prompt participation is requested.

**D.**  
**New Zealand dollars:** All estimates in this catalogue are in New Zealand dollars. The amount to be paid by successful bidders on the payment date is the New Zealand dollar amount stated on the purchaser invoice. Exchange rate variations are at the risk of the purchaser.

**E.**  
**Condition reports:** All care has been taken with catalogue descriptions. All items are offered on the basis of their presentation in the catalogue and at the viewing. Buyers are urged to request a detailed condition report with digital photographs as required. These can be provided up until 12.00 noon New Zealand time on the date of sale.





