

The Karakter Collection of
20th Century Design
New Zealand Ceramics
The Len Castle Estate Collection
25 October 2012

ART +
OBJECT





The Karakter Collection of 20th Century Design

New Zealand Ceramics

The Len Castle Estate Collection

Thursday 25 October at 5.30pm



ART+OBJECT

ART+OBJECT

3 Abbey Street
Newton
Auckland

PO Box 68 345
Newton
Auckland 1145

Telephone: +64 9 354 4646
Freephone: 0 800 80 60 01
Facsimile: +64 9 354 4645

info@artandobject.co.nz
www.artandobject.co.nz

Cover image:

Lot 106.
Hans Wegner GE375 chair.

Previous spread:

A detail from one of the
Theo Schoon slides offered
as lot 384.

Welcome to A+O's first omnibus style catalogue in some time. The October 25 catalogue features two highly complementary offerings of 20th century design furniture handpicked for this catalogue by an experienced English collector who has recently relocated to New Zealand. Andy Jones began like many enthusiasts in this area as a dedicated collector in London with an eye for fine and rare Scandinavian and British design. As time went on his passion grew to the point that it naturally moved to the point of being a full time pursuit.

On relocating to New Zealand Andy has teamed up with Andrew Lay to form Karakter, dedicated to sourcing 20th century design for the New Zealand market. Their approach is very much collector driven and this has resulted in the selection in this current catalogue. Karakter has recently opened a Parnell showroom. You can find out more about their philosophy and the special pieces they offer at www.karakter.co.nz

To compliment this offering A+O has been favoured with the personal collection of New Zealand's leading ceramicist Len Castle DCNZM, DCE (1924 – 2011). This collection from Len's estate is of national significance and includes some of his earliest and most cherished pieces. The collection consists of Len's source material, singular examples, experimental pieces and works both classic and unique which he retained as records and personal treasure. The catalogue also includes Len's personal reference library and an important grouping of large format slides by Theo Schoon which reveals the closeness of their working relationship and shared concerns.

A+O is privileged to be able to offer this unique body of work – please log onto our website from October 19 until the auction evening on the 25th as we will be regularly uploading detailed images of the exhibition of these two distinct catalogues.





Important Paintings and Contemporary Art

27 November 2012
Entries invited until October 31

A. Lois White
The Bathers
watercolour
257 x 195mm
\$8000 – \$12 000

For more information contact:

Ben Plumbly
Director of Art
09 354 4646 or 021 222 8183
ben@artandobject.co.nz



The Karakter Collection of 20th Century Design New Zealand Ceramics The Len Castle Estate Collection

Thursday 25 October at 5.30pm

3 Abbey Street, Newton, Auckland

Opening Preview

Thursday 18 October 6.00 – 8.00pm

Viewing

Friday 19 October	9.00am – 5.00pm
Saturday 20 October	11.00am – 4.00pm
Sunday 21 October	11.00am – 4.00pm
Monday 22 October	Labour Day (Closed)
Tuesday 23 October	9.00am – 5.00pm
Wednesday 24 October	9.00am – 5.00pm
Thursday 25 October	9.00am – 1.00pm



67



67a



72



85



74

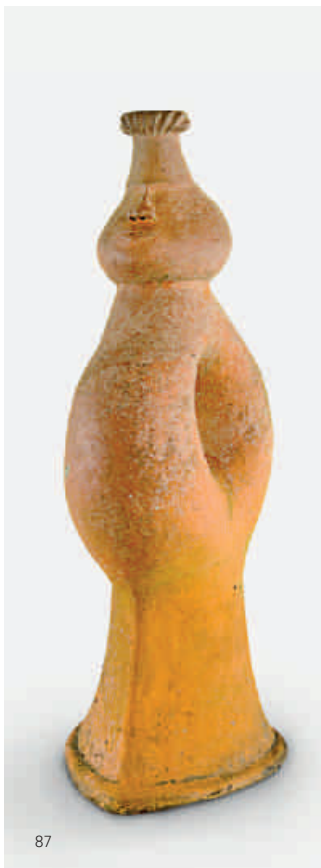


86

Objects and New Zealand pottery

1. Peter Stichbury
Stoneware wall bottle, semi matt grey barium glaze with pierced lug supports and original cord for suspension. Impressed mark. D. 340mm
\$300 – \$500
2. Peter Stichbury
Stoneware casserole dish together with a small vase with tenmoku glaze and a conical stoneware bowl. Impressed marks to each.
\$100 – \$200
3. Peter Stichbury
Large stoneware casserole dish with green papa over tenmoku glaze. Impressed mark.
\$50 – \$100
4. Peter Stichbury
Stoneware plate, a jug & two oil bottles. Together with a St. Ives stoneware dish.
\$100 – \$200
5. Peter Stichbury
Large stoneware casserole dish with tenmoku and ash glaze. W. 340mm
\$100 – \$200
6. Peter Stichbury
Circular dish with iron sand decoration to the well, the exterior unglazed.
\$300 – \$400
7. Leo King
Porcelain bowl with narrow aperture with finely painted black line decoration to the surface on a white glaze. D. 260mm
\$200 – \$400
8. Patricia Perrin
Stoneware salt jar with cork lid, pierced lug to the shoulder and original wooden spoon.
\$100 – \$200
9. Jack Laird
Waimea pottery stoneware jug together with another stoneware jug.
\$20 – \$40
10. Estelle Martin
Two tenmoku glazed stoneware flagons made for the Napier Centennial Exhibition, each with original stopper. H. 280mm
\$100 – \$200
11. John Leach
Machelney pottery stoneware jug made to commemorate Queen Elizabeth's Golden Jubilee, 2002. Together with a seven branch stoneware pot.
\$20 – \$40
12. Three New Zealand Delaware enamel dishes with Maori rock art decoration.
\$20 – \$40
13. Estelle Martin
Two anagama fired vases.
\$200 – \$400
14. Estelle Martin
Three anagama stoneware vases, each of square slab form [one repaired].
\$200 – \$300
15. Simon Engelhard
Stoneware pedestal bowl with daubed green glaze [chip to rim]. D. 200mm
\$100 – \$200
16. Charles Holmes
Stoneware slab sided vase with textured surface. The front inset with a circular red glazed disc. H. 310mm
\$200 – \$400
17. Keith Blight
Four stoneware vases
\$100 – \$200
18. Robyn Stewart
Dung fired & burnished pod vase with pierced koru design. D. 130mm
\$200 – \$300
19. Steve Fulmer & Paul Meltzer
Stoneware flagon and coffee pot with salt glaze.
\$50 – \$100
20. John Parry
Two stoneware flagons together with a Waimea pottery jug.
\$50 – \$100
21. Keith Blight
Pair of stoneware vases, each of triangulated form, glazed to the upper section & unglazed to the base. H. 340mm
\$50 – \$100
22. Anneke Borren
Stoneware vase in ovoid tapering form. H. 220mm
\$100 – \$200
23. Paula King
Stoneware jug and eight matching cups, together with a Don Thornley oil bottle.
\$30 – \$50
24. Steve Fulmer
Ovoid vase, a Patti Meads bottle vase and a Doris Dutch bottle vase.
\$40 – \$80
25. Graeme Storm
Stoneware dish and vase with tenmoku wax resist decoration, together with another vase
\$50 – \$100
26. Barry and Barbara Hockenhull
Stoneware mug and candlestick, a Jeff Scholes stoneware jug and a stoneware pot with tenmoku glaze.
\$50 – \$100
27. Peter Collis
Stoneware vase with gilt decoration to the shoulder. H. 230mm
\$30 – \$50
28. Peter Stichbury
Stoneware dish with iron sand decoration, a stoneware vase and flagon with wax resist decoration. Impressed mark to each.
\$150 – \$300
29. Warren Tippet
Stoneware dish with gestural painted blue decoration on a tenmoku ground. D. 200mm
\$100 – \$200
30. Brian Gartside
Stoneware bowl together with a Jackie Cuspin stoneware dish.
\$50 – \$100
31. Olive Jones
Blue glazed vase, blue glazed jug and dish together with a green glazed vase.
\$200 – \$300
32. Marilyn Wiseman
Stoneware dish, two Celia Parkinson vases, and a lidded pot and a bottle vase by Roger Paul.
\$50 – \$100
33. John Parker
Copper lustre teapot together with a copper lustre bowl.
\$200 – \$300
34. John Parker
Two agateware vases together with a porcelain conical bowl.
\$300 – \$500
35. Neil Grant
Coffee set, coffee pot and tenmoku glazed flagon.
\$50 – \$100
36. Peter Knuckey
Stoneware Corbans wine bottle and two June Handley oil bottles with original stoppers.
\$50 – \$100
37. Julia Colman
Three stoneware vases of graduating cylindrical size.
\$30 – \$50
38. Peter Stichbury
Collection of stoneware oil bottles, wine goblets and coffee mugs.
\$200 – \$300
39. Ian Firth
Bowl with shino glaze and a stoneware vase with wax resist decoration. Impressed mark to each.
\$50 – \$100
40. Ian Firth
Two Stoneware vases together with a small Jeff Scholes vase.
\$50 – \$100
41. Ian Firth
Stoneware bowl with pinched rim & jun glazed interior. D. 220mm
\$100 – \$200
42. Roger Brittain (attributed)
A large ovoid stoneware vase with red and grey glaze. H. 350mm
\$40 – \$80

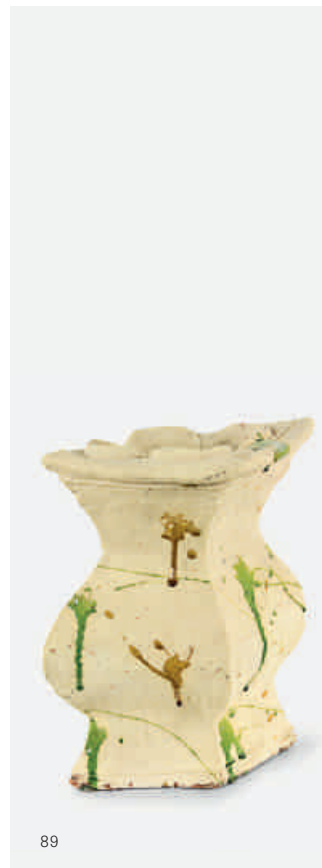
43. Peter Lange
Year of the Rat red glazed sculptural teapot.
L.230mm
\$100 – \$200
44. Stan Jenkins (attributed)
Large stoneware discoid vase. H. 470mm
\$50 – \$100
45. Peter Stichbury
Stoneware oil bottle with tenmoku glaze together with a Don Thornley stoneware oil bottle and a Jack Laird Waimea Pottery wine bottle with original cork stopper.
\$30 – \$50
46. Richard Cadness
Stoneware jug with tenmoku glaze together with a Waimea pottery jug, another tenmoku glazed jug and four wine cups.
\$50 – \$100
47. Don Thornley [attributed]
Stoneware dish with iron sand decoration. W. 340mm
\$50 – \$100
48. Elizabeth Lissaman
Small stoneware jug together with five small assorted pieces of pottery.
\$50 – \$100
49. Peter Stichbury
Stoneware coffee pot together with a stoneware teapot and lidded water jug.
\$50 – \$100
50. Yvonne Rush
Circular stoneware dish with ash glaze together with eight other assorted pieces.
\$100 – \$200
51. Scott Hockenull
Two cube form vases with black glaze and circular apertures.
\$50 – \$100
52. Ian Smail
Large stoneware dish with olive ash glaze. D. 430mm
\$200 – \$300
53. Peter Collis
Porcelain vase together with two vases and a circular dish.
\$50 – \$100
54. Jeff Oestreich
Jug and tea bowl each with impressed marks together with a lidded pot by Rand Heazlett.
\$200 – \$400
55. Peter Lange
Stoneware teapot together with a salt glazed teapot and two other teapots.
\$100 – \$200
56. Rosemary Brittain
Stoneware bird figure.
\$30 – \$50
57. Robyn Stewart
Dung fired burnished paperweight with Maori rock art design. D. 80mm
\$50 – \$100
58. Keith Blight
Stoneware slab vase with fossil impressed design together with another Keith Blight vase.
\$150 – \$250
59. Peter Stichbury
Conical shaped stoneware bowl together with three oil bottles.
50 – \$100
60. Asako Sakurai
Pair of stoneware bowls with white glaze. D. 110mm
\$30 – \$50
61. Anita Thompson
A stoneware vase with lustre decoration together with five other assorted pieces.
\$30 – \$50
62. Warren Tippet (attributed)
Ovoid stoneware vase with slender neck, salt glazed with tenmoku interior. Unmarked, purchased from New Vision Gallery circa 1968-1970. H. 280mm
\$300 – \$500
63. Barry Brickell (attributed)
Stoneware dish with tenmoku glaze together with another stoneware dish. Purchased from New Vision Gallery circa 1968-1970
\$200 – \$400
64. Charles Holmes
Stoneware with textured surface, circa 1970s H. 315mm. Illustrated: [Conetendown, Studio Pottery in New Zealand 1945-1980](#) Moyra Elliott and Damian Skinner, David Bateman 2009, p.131
\$400 – \$800
65. John Ecuyer
Oceanic Vessel. Wood turned black maire with applied patinated copper. H.530mm D.460
\$800 – \$1200
66. Ernest Shufflebotham
White spherical hand potted and lathe turned vase. Shape 14. H. 140mm
\$250 – \$350
67. Ernest Shufflebotham for Crown Lynn.
Unique prototype glazed planter in matt white. D.250mm
\$400 – \$800
- 67a. A pair of Crown Lynn Wharetana slip cast book ends. Modelled as Tekoteko figures each with hands to abdomen, brown glaze. Impressed number 1020 to the base. 150 x 135mm (each)
\$1000 – \$2000
68. Briar Gardiner
Trough vase with aubergine and pale green glaze. W. 220mm
\$150 – \$250
69. Stoneware salt pig together with two stoneware coasters.
\$50 – \$100
70. Barry Ball
Large stoneware orb form. D.300mm
\$400 – \$800
71. Robyn Stewart
Three Totem forms of graduated size with textured exterior surface and burnished glaze incised with koru motifs. Impressed marks.
\$1000 – \$2000
72. Doreen Blumhardt stoneware standard lamp, the pierced baluster stem raised on a spreading foot. H. 1260mm
Provenance: From the Doreen Blumhardt Collection.
\$500 – \$1000
73. Paul Maseyk
Bottle form decorated in black and white slip and inscribed on the white slip panels, Good, Bad, Crap, Ugly. H.410mm
\$350 – \$500
74. John Parker
Large copper lustre glazed vase with a conical base issuing to an ovoid central section with grooved cylindrical upper section. H.460mm
\$500 – \$1000
75. Graham Ambrose
A pair of orb shaped vases, each with turquoise glaze. D.220mm
\$550 – \$700
76. Graham Ambrose
An orb shaped vase with turquoise glaze. D.160mm
\$150 – \$200
77. Moyra Elliott
Japanese temple bell form, earthenware with variegated green surface decoration. H.430mm
\$400 – \$800
78. Steven Scholefield (Rocket Pottery)
Lidded stoneware jar slip trailed decoration in the manner of Winchcombe pottery. Impressed mark to the base. H.170mm
\$50 – \$100
79. Elizabeth Lissaman
Wall plaque hand painted with dancing peacocks. Signed and dated to the reverse. D. 370mm
\$400 – \$300
80. Adrian Cotter
Stoneware lamp base together with a June Black stoneware bowl and a St. Ives stoneware pouring jug.
\$30 – \$50
81. Briar Gardiner
Trough vase with blue and cream glaze together with another trough vase.
\$100 – \$200
82. Briar Gardiner
Trough vase with green trickle glaze. L.180mm
\$50 – \$100
83. Estelle Martin
Ovoid stoneware vase, anagama fired, together with another anagama fired stoneware vase. Each with incised marks to the base. H.250mm
\$200 – \$400



87



88



89



90

84. Peter Collis
Large stoneware vase painted with floral decoration. Signed and dated 3/84 to the base. H.540mm
\$150 – \$300
85. Graham Ambrose
Large porcelain bowl, conical shaped with turquoise glaze. D.380mm
\$750 – \$1250
86. Graham Ambrose
A large and impressive vase of orb shape with rich red glaze. Impressed initials to the base. D.450mm
\$2000 – \$2500
87. Barry Brickell
A large and impressive hand built terracotta spiromorph sculpture. The large orbicular body issuing from an elliptical base and supporting a stylised bulbous bust. H.910mm
\$4000 – \$6000
88. Barry Brickell
Stoneware salt glazed bellarmine with mask to the neck section. H. 300mm
\$300 – \$500
89. Richard Parker
Large terracotta vase with yellow and green splatter glaze on a cream ground. H.
\$900 – \$1500

90. Rick Rudd
Bottle, 1989
pinched and coiled, raku fired with white crackle glaze to the interior.
exhibited: Rick Rudd True to Form, Sarjeant Gallery, 1996. Illustrated on page 16 of the catalogue.
This important bottle was one of very few made by Rick Rudd. A copy of the catalogue True to Form will be offered with this lot.
H.357 x 250 x 235mm
\$900 – \$1800
91. Juliet Peter and Roy Cowan
An important collaborative wall mural, the white ceramic tiles painted with an abstract modernist design. *This mural was historically part of the bathroom in Roy Cowan and Juliet Peter's home at 8 Heke Street, Ngaio Wellington*
\$3500 – \$5000
92. Large collection of NZ Potter magazines
\$100 – \$200

The following Aquila and Titian lots are part of the Dorothy and Cam Brown family collection.

93. Aquila hand-painted unique prototype, wall plaque decorated with a galleon by Cam brown.
D. 360mm
\$300 – \$500
94. Aquila hand-painted unique prototype, wall plaque decorated with a Goddess figure on a cobalt blue ground by Cam Brown, [small chip to foot rim]. D. 360mm
\$250 – \$400
95. Aquila hand painted unique prototype wall plaque with a bird flying over a landscape, green glazed by Cam Brown. D. 360mm
\$300 – \$500
96. Aquila hand painted unique prototype wall plaque with a bird flying over a landscape, brown glazed by Cam brown. D. 360mm
\$300 – \$400
97. Collection of five Titian ware and Aquila hand painted character jugs of Friar Tuck, Maid Marion, Robin Hood, Alan A Dale and the Sheriff of Nottingham
\$750 – \$1000



Modern Design

98. Kari Christensen for Royal Copenhagen
Fajance bottle vase painted with an abstract figure in a field of stylised flowers. H.290mm
\$250 – \$400
99. Royal Copenhagen Fajance vase or flask form painted with abstract floral decoration in blue and brown. H.230mm
\$200 – \$400
100. Hans Linden
Industrial design bottle vase with vertical fins protruding from the body. Signed and dated 1971 to the base. H.300mm
\$200 – \$400
101. Renate Rheim for Rosenthal
Large stoneware 'Still Life' wall plaque. 500x380mm
\$100 – \$300
102. Grethe Helland Hansen for Royal Copenhagen
Fajance vase painted with an anthropomorphic floral design in cobalt blue on a white ground. H.190mm
\$250 – \$350
103. Three Whiterfriars ribbed optic vases, two orange tinted & one with yellow tinting.
\$150 – \$250
104. Whiterfriars 1960's yellow tinted glass bowl with optical cut discs. D.230mm
\$200 – \$400
105. Whiterfriars 1960's yellow tinted glass vase, matching the previous lot. H.210mm
\$200 – \$400
106. Hans Wegner
GE375 chair Oak framed, with original green upholstery
This chair is similar to a chair which recently featured on the cover of Urbis magazine
\$2000 – \$3000
107. Hans Wegner
GE375 chair Oak framed, with original green upholstery
This chair is similar to a chair which recently featured on the cover of Urbis magazine
\$2000 – \$3000
108. Frank Guille for Austinsuite
Teak sideboard with six drawers, raised on tapering square sectioned legs. Makers label to central drawer Austinsuite W. 1645mm H.420mm
\$1200 – \$1800
109. Modus Chair in rosewood framed with black leather upholstery with padded back seat and arms. Original label fixed to underside of the chair.
\$1800 – \$2400
110. Arne Jacobsen
Ant Chair. A rare example with arms, patterned cloth & seat raised on tubular metal legs.
\$600 – \$900
111. Italian 1950s art glass vase in red with clear casing raised on a triangulated foot. H.380mm
\$100 – \$200
112. Italian 1950s sommerso glass vase with grey internal glass encased in clear glass with facet cut panels together with a smaller sommerso vase with amber glass encased in clear glass. H.300mm and 170mm
\$250 – \$400
113. Two 1960s WMF Kristall glass vases.
One with original label affixed.
\$50 – \$150
114. Industrial Metal Filing Drawers with fifteen drawers on splayed feet. H.1190mm W.140mm
\$400 – \$600
115. French Industrial Chair with plywood seat and back swivelling to adjustable height. Traces of original green paint remain.
\$500 – \$800
116. Walter S Chenery
Lurashell chair with apricot cloth covering supported on aluminium sleigh form legs. Impressed stamp to underside of chair.
\$700 – \$1000
117. Terence Conran
Glove chair with moulded fibreglass shell with tilt and swivel movement raised from a spun steel circular base.
\$1000 – \$1500
118. Hans Wegner for Getama
Lounge chair crafted in oak raised on square sectioned legs united by stretches with green cloth upholstery.
\$1800 – \$2600
119. Hans Wegner for Getama
Lounge chair in oak matching the above lot.
\$1800 – \$2600
120. Danish tea trolley in Teak with detachable tray table top.
\$400 – \$600
121. Robert Heritage for Archie Shine
Hamilton teak sideboard with four drawers, reeded facias beside cupboards & raised on tapering cylindrical legs. Designed in 1957. 2300mm x 510mm
\$3800 – \$4800
122. John Crichton
Wall charger with mosaic pattern in black, white and green coloured tiles. D.420mm
\$500 – \$800
123. Edgar Mansfield
Bronze Animism sculpture. The anthropomorphic bird form issuing from a composite block base. Signed with initials. H.540mm
\$1000 – \$2000
124. Peter Hvidt
Two tiered circular teak coffee table raised on tapering legs, the lower shelf with brass supports.
\$1000 – \$1600
125. Poul Hundevad
Teak credenza with eight drawers raised on tapering legs.
\$1800 – \$2200
126. Gordon Russell
Teak desk / dresser with central freize drawer flanked by drawers raised on tapering legs. Impressed stamp to back 'Russell of Broadway'. W. 1220mm D.500mm H. 750mm
\$1200 – \$1500
127. Poul Henningson for Louis Poulsen
Vintage PH5 hanging light in purple
\$800 – \$1200
128. Richard Hornby
Teak sideboard with folding doors which open to reveal a fitted interior raised on square sectioned legs. W. 1230mm H. 715mm
\$1200 – \$1800
129. Danish teak and leather armchair with brown leather upholstered button back seat raised on square sectioned legs.
\$1000 – \$1500
130. Sigurd Ressel for Vatne Mobler
Falcon Chair. A good Hi-back vintage example with Chocolate brown leather upholstery.
\$2000 – \$3000
131. Richard Hornby
Sideboard in teak with four drawers and cupboards, the drawers with reeded facias raised on tapering legs. W. 1905mm D. 485mm H. 800mm
\$2000 – \$3000
132. Danish mid-Century extending dining table in teak with book match veneer top raised on cylindrical legs. L. 1400mm extending to 2460mm W. 900mm H. 630mm
\$1800 – \$2400
133. Kai Kristiansen
A set of eight teak dining chairs, each with chocolate brown wool blend upholstery. Makers label stamped to underside of each chair.
\$3000 – \$4000
134. Erik Buch
Set of six Teak framed dining chairs with black vinyl seats. Makers label fixed to underside of each chair.
\$2500 – \$3000
135. Borge Mogenson
Six Asserbo dining chairs in Oregon pine. The set comprising two carvers and side chairs. Each chair stamped to the underside of the front rail.
\$1800 – \$2600
136. Hans Wegner for Getama
A pair of oak framed lounge chairs. Original label to the underside of each chair.
\$1100 – \$1600
137. Robert Heritage
Set of six teak framed chairs in black vinyl upholstery with floating form seat on tapering cylindrical legs.
\$1800 – \$2400



132

138. Robert Heritage
Teak extending dining table raised on cylindrical legs.
L. 1450mm extending to 1960mm, W. 855mm
H. 720mm
\$1400 – \$1800

139. Robert Heritage for Race furniture chairs
A good set of Q chairs each with brown vinyl upholstery raised on an aluminium base. Original Race furniture label affixed to the stretcher on each chair. The Q chair originally designed in 1969 for the Britannia restaurant on the QE2 passenger liner.
\$2400 – \$3000

140. Ole Wanscher for Fritz Hansen
Two seater sofa in teak framed with patterned green upholstery. [John Stuart, New York](#) retailer label affixed to the bottom back rail.
\$1600 – \$2400

141. Elizabeth Thompson
A set of six silver and bronze lantern fish of graduated size.
\$4000 – \$6000

142. Arne Jacobsen for Fritz Hansen
Set of six beech framed dining chairs comprising two carvers and four side chairs. Original label affixed to each chair.
\$1800 – \$2400

143. Arne Jacobsen for Fritz Hansen
Dining table in beech raised on a trestle form base.
L.1600 800D 1700H
\$3000 – \$4000

144. Lebus
1950s Sideboard In walnut with three central drawers & cupboards with brass handles raised on splayed legs. W. 1240mm D.530mm
H. 940mm
\$1000 – \$1400

145. Gordon Russell
'Stanway' 1960's sideboard in teak. Inverse bow front shape with four drawers flanked by cupboards raised on octagonal tapering legs. Original manufacturers label to the back [Gordon Russell Ltd](#) and retailer label affixed in second drawer [Leigh-Lonland, Birmingham](#).
W. 1830mm D. 195mm H860mm
\$2000 – \$3000

146. Arne Vodder for Sibast
Teak framed rocking chair. Original label affixed to underside of the front rail. [Newly re-upholstered].
\$1000 – \$1500

147. Vintage industrial telescopic photax chrome photographic standard lamp. H. 1230mm
\$500 – \$750

148. 1950's Hallstand
\$300 – \$500

149. Bent tubular chrome framed armchair with chocolate brown leather upholstery.
\$900 – \$1200

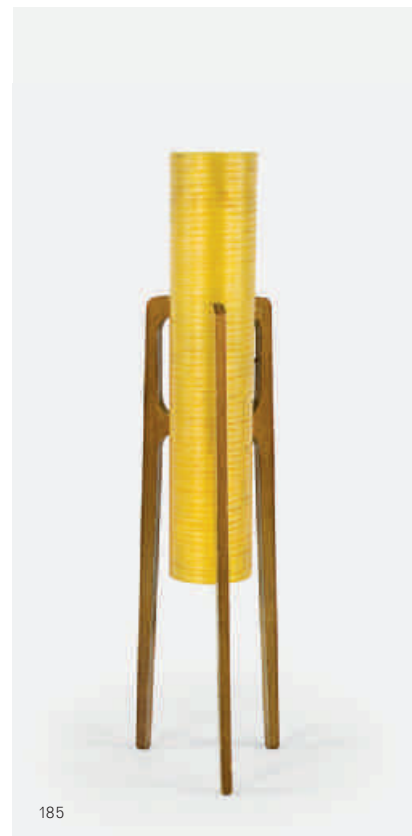


135



139

150. Danish nest of four tables in teak. One large rectangular table and three interlocking small tables. W. 830mm D.350mm H.450mm \$600 – \$800
151. Vintage industrial standard lamp. Raised from a circular rosewood base. H. 1500mm \$300 – \$500
152. G-Plan extending dining table in teak raised on tapering cylindrical legs with folding central extension. L. 1220mm extending to 1700mm W.1220mm H. 730mm \$800 – \$1200
153. Anders Pehrson Bumbling lamp with brass shade raised on chromium plated base. H. 580mm W. 390mm \$400 – \$600
154. Vintage Furse Theatre light W. 280mm L. 280mm \$600 – \$800
155. Gordon Russell Coffee table in teak raised on tapering legs. Original label to underside. W.1210mm H. 400mm \$400 – \$600
156. Joe Colombo for Kartell, orange plastic space age lamp. H.400mm \$100-200
157. George Nelson for the Vitra Design, museum desk clock. H.140mm \$150 – \$250
158. Whiterfriars optic vase of tapering cylindrical form. \$20 – \$40
159. Per Lutken for Holmegaard Tapering cylindrical vase in brown tinted cased glass, signed and dated 1962, together with a small glass vase with original Holmegaard label. L.310 mm and 65 mm \$100 – \$200
160. Peter Raos Glass paperweight, ovoid shape with liquorice black and striped murrine encased in clear glass. Signed and dated 1991. H.110mm \$50 – \$100
161. Garry Nash Blue iridescent glass vase. Signed and dated 1996 to the base. H.210mm \$40 – \$80
162. Three German Victoria china 1960's porcelain specimen vases. \$40 – \$80
163. Herbert Terry designed industrial lamp in grey. \$300 – \$400
164. Anglepoise vintage lamp, model 1227 in black. \$300 – \$400
165. Daray medical light Tripod base, terminating in castors. \$450 – \$600
166. Hans Olsen for Frem Rojle Dining table in teak with four interlocking chairs with black vinyl seats. The table with integral central leaf. Stamped manufacturers mark to underside of the table and chairs L. 1050mm extending to 1565mm W. 1050mm H. 740mm \$2500 – \$3500
167. Hadrill & Horstmann Vintage counterpoised green lamp \$450 – \$800
168. Hans Wegner for Getama A pair of 1960s oak framed 'Plank' armchairs with orange upholstery. Manufacturers mark to underside of each chair. \$3000 – \$4000
169. Herbert Terry Vintage anglepoise lamp with unusual marbled finish \$300 – \$500
170. Vintage polished steel & glass medical drawer cabinet with six drawers above cupboards, the upper section with sliding glass doors. 980mm D. 380mm H. 1240mm \$1500 – \$2000
171. Pair of Danish 1960s armchairs with black vinyl upholstery with exposed finger joint detailing raised on square sectioned legs. \$800 – \$1400
172. Herbert Terry Vintage anglepoise lamp with unusual marble finish. \$300 – \$500
173. Danish red/brown leather upholstered armchair raised on a five point aluminium base complete with ottoman. The leather recently refurbished. \$1600 – \$2400
174. Charles and Ray Eames Coffee table with ash composite top raised on an aluminium base. H. 290mm Diameter 900mm \$600 – \$800
175. A set of ten aluminium cafe chairs. \$1800 – \$2400
176. Vintage Atomic coat rack. W. 520mm \$150 – \$250
177. Danish armchair raised on curved tubular legs & upholstered in soft black leather. \$500 – \$800
178. Gote Mobler Nassjo Pair of Swedish armchairs with laminated European birch frames and brown leather upholstery. \$2000 – \$3000
179. A well-proportioned rosewood veneered office desk with six drawers of graduating size. W. 1580mm, D. 790mm H. 740mm \$1600 – \$2400



185



195



184

127



121



129



137



131



126



130



128





140



141



145



146



142



144



166



180. Bruno Munari
1960s Falklands Lamp. Fine white mesh shade.
H. 1380mm x 80mm
\$300 – \$500
181. Gordon Russell
Sideboard in teak with three central drawers
flanked by cupboards & raised on tapering legs.
W. 1410mm H. 860mm D. 490mm
\$1500 – \$2000
182. English Meredew secretaire chest in teak,
the top drawer with folding fascia opening to
create a writing surface above three full width
drawers & raised on square section legs.
W. 900mm D. 460mm H. 720
\$1600 – \$2000
183. Daray vintage medical floor lamp.
\$450 – \$600
184. 1960's double moon chrome lamp raised on a
circular base. H. 620mm
\$250 – \$300
185. A vintage rocket floor lamp.
H. 940
\$200 – \$300
186. Yngve Ekstrom
A set of four Kontiki chairs in teak with black
vinyl upholstery.
\$1400 – \$1800
187. Hille International dining chairs
A set of eight dining chairs upholstered in
cobalt blue cloth, each raised on a five point
chrome base & terminating in casters. '[Hille
International London](#)' stamp to the underside
of each chair.
\$3500 – \$4000
188. Gordon Russell
Rectangular coffee table with teak veneer
raised on tapering legs. W. 760mm 380mm H.
425mm
\$600 – \$800
189. Cari Zalloni
Floor lamp with tapering conical shade and
ceramic base.
\$600 – \$800
190. Junghans electric clock in yellow.
\$100 – \$400
191. Finn Juhl
Diplomat armchair, teak framed with green
cloth upholstery. [Finn Juhl](#) makers label affixed
to the underside of the seat.
\$1200 – \$1800
192. Georg Jensen
Kubus rocking chair, teak framed with cream
upholstery.
\$1800 – \$2400
193. Siesta chair by Westnofa, teak framed with red
leather upholstery.
\$700 – \$1000
194. Three Scandinavian teak side tables of
graduated size.
\$400 – \$600
195. West German 1960s Scheurich floor vase with
an impressed geometric design & mottled
volcanic glaze. H. 410mm
\$200 – \$300
196. West German 1960s Scheurich floor vase with
geometric decoration & cobalt blue glaze.
H. 410mm
\$150 – \$250
197. Stelton stainless steel two tier cake stand.
D. 270mm
\$100 – \$150
198. A set of four Stelton napkin rings in original
box.
\$50 – \$80
199. Isis Model 20-1 FM/AM radio. L. 250mm
\$150 – \$250
200. Ruscha wall plaque with modernist abstract
design. Signed to the base. D.370mm
\$150 – \$250
201. Vintage Japanese machine robot with visible
gear mechanism in original box.
\$250 – \$500
202. Set of ten vintage Danish beer glasses.
\$50 – \$100
203. French 1950s desk lamp with brass shade and
lucite support. H.360mm
\$250 – \$500
204. French 1950s cabinet plate by J Lurcat
decorated with an abstract surrealist creature
on a yellow ground. Signed and with factory
marks to the base. D.250mm
\$200 – \$400
205. Villeroy and Boch 1950's Lilo vase painted with
black vertical bands. H.290mm
\$100 – \$200
206. Tapio Wirkkala for Rosenthal
Pair of 1950's porcelain vases of elongated
ovoid shape.
\$300 – \$500
207. Timo Sarpaneva for Ittala
1950's tapering conical blue glass vase with
clear casing. Signed to the base. H.400mm
\$200 – \$400
208. Dino Martens for Arte Vetraria Muranese
(AVEM) bottle vase, clear cased with internal
multi coloured filigrana ribbons and murrines.
H.350mm
\$750 – \$1500
209. Bohemian 1960's glass bullet shaped vase, blue
and white cased glass. H.260mm
\$200 – \$400
210. Ken Scott for Venini
Glass fish in green and white with aquamarine
eyes. Circa 1955. L.280mm
\$300 – \$500
211. 1980's architectural lamp with blue glaze.
H.360mm
\$150 – \$250
212. Marianne de Tray fish platter together with a
Rye pottery jug.
\$50 – \$100
213. Danish 1950's studio pottery stoneware vase
with cylindrical body and volcanic glaze.
H.300mm
\$200 – \$400
214. Karjk Frank for Handeland
Tapering rectangular shaped sommerso blue
and green glass vase. [Small interior rim frit].
H.220mm
\$300 – \$700
215. Riccardo Licata for Cenedese glass
Impressive 1950's aquarium glass block
sculpture with angel fish swimming amongst
seaweed. H.260mm
\$800 – \$1400
216. Venni
Somerso glass vase. Thick walled rectangular
vase with purple glass interior cased in clear
glass. H.240mm
\$700 – \$1100
217. Scandinavian 1950's basket weave monkey
mother and baby figure. H.800mm
\$200 – \$400
218. Poole Pottery Freeform 1950's advertising
asht by A B Rhead. L.350mm
\$300 – \$500
219. Poole pottery freeform three piece cruet set.
\$80 – \$120
220. Rye pottery bottle vase and bowl
\$100 – \$200
221. Eric Ravilious for Wedgwood
1950's Harvest Festival pattern dinner service
\$400 – \$800
222. West German studio pottery. 1950's floor vase
with green glaze & sgraffito vertical bands.
H.510mm
\$200 – \$400
223. West German studio pottery. 1950's floor vase,
cylindrical with blue glaze. H.400mm
\$100 – \$200
224. West German pottery vase with a spider web
design on a rich red ground. H.290mm
\$100 – \$200
225. Thomas Pottery (German) black and white
porcelain op art vase. H.240mm
\$100 – \$200
226. Versace for Rosenthal
Pair of decorative obelisks decorated in the [Les
Tresors de la Mer](#) pattern. H. 380mm
\$350 – \$500
227. American Westinghouse machine age teapot.
Blue glazed. L.280mm
\$200 – \$400
228. Michael Bang for Holmegaard
Three green glass ovoid vases of graduated
size. Each signed with initials.
\$400 – \$600

229. Per Lutken for Holmegaard
Blue tinted ovoid glass vase. Etched marks to the base. H.270mm
\$350 – \$500
230. Paolo Venini for Venini and Co
1950's cube form decanter. Sapphire glass overlaid with a spiralling trail of blue and with conforming spherical stopper. Original paper label affixed to the base. H.170mm
\$800 – \$1200
231. Per Lutken for Holmegaard
Carnaby blue glass vase with white glass internal casing. H.210mm
\$100 – \$200
232. Jena Schott Bahauss design Wagenfeild glass teapot
\$100 – \$200
233. Huphrey Ikin
Kauri dining table with a rectangular top raised on tapering square section legs 1400 x 920mm
\$1500 – \$2500
234. Garth Chester
A bent plywood Curvese chair in superb original condition.
\$4000 – \$6000
235. Otto Brauer for Holmegaard
Gulvase. Oversized in cobalt blue with original label to the shoulder. H.495mm
\$500 – \$800
236. Otto Brauer for Holmegaard
Gulvase. A rare oversized example in red with white internal casing. H.510mm
\$1000 – \$1500
237. Otto Brauer for Holmegaard
Gulvase. A rare oversized example in white colour with clear glass casing. Original label to the base. H.510mm
\$1000 – \$1500
238. Otto Brauer for Holmegaard
Gulvase in turquoise with white internal casing. Original label to the base. H. 430mm
\$800 – \$1200
239. Aureliano Toso
Italian 1950s glass vase with red and aubergine tinting. H.360mm
\$800 – \$1200
240. Seguso sommerso glass vase with green and orange internal glass encased in clear glass. Original label affixed to the base. H.200mm
\$200 – \$400
241. Timo Sarpaneva for Iittala
Bark vase with charcoal tinting. H.220mm
\$600 – \$1000
242. Barovier & Toso
1960's glass pink and white lamp base. Original label to the base. H.300mm
\$250 – \$500

243. Barovier & Toso
1960's glass bowl with a blue and white spiral design. D.200mm
\$200 – \$400
244. Salvador Dali for Rosso Antico
Two blue glass decanters. H.340mm
\$100 – \$200
245. An Austrian bronze pin dish model in the form of a bodhisattva's hand.
\$50 – \$100
246. 1950's Piero Fornasetti dish decorated with a sun burst design. D.120mm
\$100 – \$200
247. Rosenthal Studio line Andy Warhol design glass dish in original box.
\$100 – \$200
248. A set of 5 Auckland Star advertising posters relating to the moon landing.
\$100 – \$250
249. A Danish teak spinning cheese platter.
\$50 – \$100
250. Two Danish teak salad bowls.
\$50 – \$100
251. A collection of eleven Nagel interlocking chromium plated candlesticks.
\$300 – \$500
252. Joe Colombo
Set of six highball smoke glasses designed in 1964.
\$300 – \$500
253. Joe Colombo
Plastic space age lamp. H.400mm
\$100 – 200
254. Pair of 1950's curtains together with Marimekko curtains and other 1960s fabric.
\$100 – \$200
255. Christian Barman for HMV
Multi finned chromium plated heater.
\$400 – \$800
256. Marantz direct drive turntable, model 6300
\$200 – \$400
257. A 1960s Westclox starburst clock with teak arms radiating from a polished brass face. D.670mm
\$250 – \$350



180

176

230





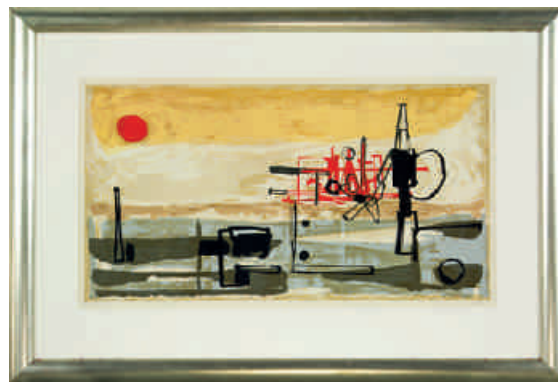
258



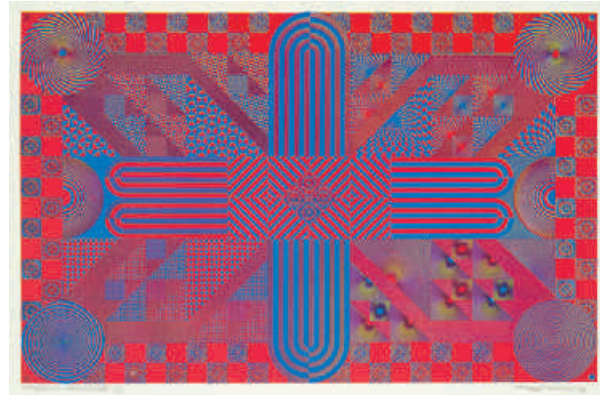
269



267



270



268



279



283



284



285

Selected Artworks

258. Hamish Keith
Banana
screenprint, 1968
original National Art Gallery, Wellington, label
affixed verso
760 x 540mm
\$800 – \$1400
259. Frank Womble
Modern Time – The Weekly Magazine
enamel on board
title inscribed and dated July 15-25, Barry Lett
Gallery, Earth
795 x 470mm
\$500 – \$800
260. Eileen Mayo
Gently Floating Forms
screenprint
title inscribed, signed and numbered 13/40
550 x 340mm
\$1200 – \$1500
261. Eileen Mayo
Winter Sleep
screenprint, edition of 30
520 x 320mm
\$500 – \$700
262. Peter A. Read
Nebula
gouache on paper
title inscribed verso, signed and dated 1959
670 x 495mm
\$800 – \$1200
263. Denys Watkins
Vacation
screenprint 10/30
title inscribed, signed and dated 1975
400m x 310mm
\$600 – \$1000
264. Theo Janssen
Figure 9
charcoal and pastel on paper
580 x 405mm
\$100 – \$200
265. Brian Dahlberg
Northern Coastal Landscape
oil on board
signed
595 x 900mm
\$300 – \$500
266. Joan A'Beckett Lindsay
Flock of Seagulls
oil on board
signed and dated, '77
520 x 660mm
\$500 – \$1000
267. Paul Hartigan
"Two- Bob a.k.a. Puff Daddy"
ultrachrome print AP1
title inscribed, signed and dated 2006
470 x 780mm
\$1000 – \$2000
268. Mervyn Williams
Chromatic Variations V
screenprint 2/7
title inscribed, signed and dated '69
490 x 740mm
\$700 – \$1200
269. Mervyn Williams
Midas MK 1
screenprint 11/50
title inscribed, signed and dated '67
520 x 430mm
\$300 – \$500
270. Ted Dutch
The Red Machine
lithograph 27/48
signed and dated 1963
410 x 475mm
\$1000 – \$1500
271. Alan S. Paterson
Untitled – 'Picasso' Form Paints Nude
ink on paper
signed
270 x 260mm
\$300 – \$500
272. Paul Hartigan
"Yella Fella"
screenprint, artist's proof
title inscribed, signed and dated 2006
410 x 285mm
\$300 – \$500
273. Roy Cowan
Natural Meets Urban
lithograph
370 x 530mm
\$200 – \$400
274. John Tunnard
Holiday
lithograph
signed and dated 47
410 x 680mm
\$500 – \$1000
275. We Sell Crystal
advertising sign, enamel on tin
455 x 600mm
\$200 – \$400
276. Sheridan
Untitled – Desert Water Carriers
mixed media on board
460 x 460mm
\$200 – \$400
277. J.B. Thierry
Charmille
fabric print 129/200
670 x 1130mm
\$100 – \$200

Travel Posters

278. 1960s Travel Poster
a moment while we change...
(Teal becomes Air New Zealand 1965)
black and white travel poster featuring Miss
New Zealand Lyndal Cruikshank
650 x 440mm
\$300 – \$500
279. 1957 Travel Poster
Africa fly there by B.O.A.C.
artwork by Dick Negus and Philip Sharland
colour screenprint printed in Great Britain
1020 x 630mm
\$600 – \$1000
280. 1956/57 Travel Poster
Japan Qantas (earlier version depicting
Constellation)
artwork by Harry Rogers
colour screenprint printed in Australia by
Posters Pty Ltd
995 x 735mm
\$600 – \$1000
281. 1960s Travel Poster
South Africa Fly there by Qantas (Lion)
photogravure printed by South African Tourist
Corporation – Cape Times Ltd
1020 x 635mm
\$600 – \$1000
282. 1960s Travel Poster
Fiji Hub of the South Pacific
colour screenprint, artist and printer unknown
1010 x 630mm
\$500 – \$1000
283. 1960s Travel Poster
TEAL Fly Wellington-Sydney Direct
colour process lithograph, artist and printer
unknown
990 x 625mm
\$600 – \$1000
284. 1950s Travel Poster
Tahiti Fly Teal
artwork by Arthur Thompson
colour process lithograph, printer unknown
980 x 630mm
\$600 – \$1000
285. 1960s Travel Poster
Tahiti Air New Zealand
colour process lithograph, artist and printer
unknown
980 x 630mm
\$600 – \$1000

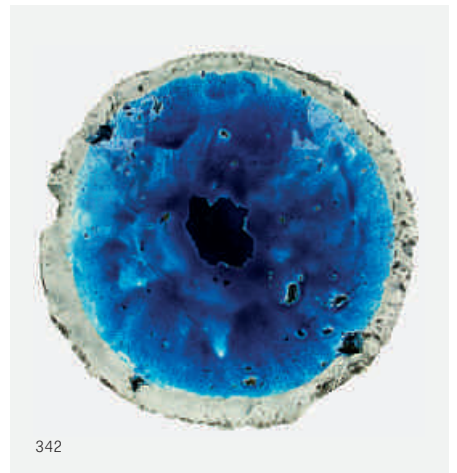


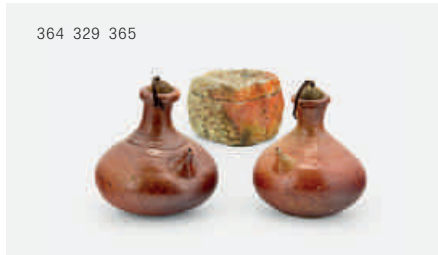
The Len Castle collection

The following collection has been consigned by Neil and Fay Castle. The collection includes a large number of pieces from Len Castle's personal collection.

286. Len Castle
An early dish with slip decoration depicting a crab on a blue glazed ground. Circa 1951. A dish decorated with a similar design with a yellow glaze is illustrated in [Len Castle Potter](#), Ron Sang and Len Castle. Published 2002 by Sang Architects and Company \$150 – \$300
287. An early salt shaker manganese slip with salt glaze. Fired at the Crum Brick and Tile Works, New Lynn. [Chipped to the top section]. Illustrated: [Len Castle: Making the Molecules Dance Ceramics 1948-2008 Lopdell House Gallery 2008](#), p. 124. \$100 – \$200
288. Len Castle
An important early earthenware vase, matt wood ash glaze. Circa 1954. Made and fired at 52 Westmere Crescent, Auckland. Fired in a single chamber down-draught firebrick kiln fuelled by atomised diesel oil. Impressed initials to the base. H.320mm. Illustrated: [Len Castle Potter](#), p.21 \$1500 – \$2500
289. Len Castle
An important early salt glaze vase with incised decoration. Circa 1952. Fired at the Crum Brick and Tile Works in New Lynn. Impressed initials to the base. H.130mm. Illustrated: [Len Castle Potter](#), p.13 \$1000 – \$2000
290. Len Castle
Early stoneware vase, bottle shape with salt glaze with glaze streak to the shoulder section. Fired at the Crum Brick and Tile Works in New Lynn. The streak on the shoulder of the vase is caused by molten salt glaze dripping from the arch of the kiln. Impressed initials. H.300mm. \$1000 – \$2000
291. Len Castle
Early stoneware vase, ovoid shape, salt glazed, ribbed to the lower section and with incised decoration to the shoulder. Fired at the Crum Brick and Tile Works in New Lynn. Unmarked but original Castle family labels to the base. H.180mm \$500 – \$1000
292. Len Castle
An early stoneware salt glazed lidded dish with lug handles to the shoulder & glaze splash to the lid. Circa 1952. Early impressed Castle mark to the base. D.170mm \$350 – \$700
293. Len Castle
Crater Lake bowl in matt grey stained earthenware with turquoise alkaline glazed well & sculptured cavetto. Impressed initials. D. 530mm \$3000 – \$5000
294. Len Castle
Crater Lake bowl in matt grey stained earthenware with turquoise alkaline glazed well & sculptured cavetto. Impressed initials. D. 530mm \$3000 – \$5000
295. Len Castle
Cylindrical vase with incised concentric bands & ash over iron glaze. Impressed initials. H. 290mm \$350 – \$700
296. Len Castle
Cylindrical vase with incised concentric bands & ash over iron glaze. Impressed initials. H. 260mm \$300 – \$600
297. Len Castle
Fossil, ovoid form in earthenware. Circa 2006. Impressed initials to the base. D.110mm \$200 – \$400
298. Len Castle
Squat stoneware jug, tenmoku underglaze with talc overglaze. Made and fired at Tawini Road. Impressed initials. D.180mm H.100mm \$50 – \$100
299. Len Castle
Hanging earthenware vase decorated with incised concentric bands & pierced at the rim for suspension. Made and fired at Tawini Road. Impressed initials. D. 170mm H.200mm. Illustrated: [Len Castle Potter](#), p.34 \$300 – \$500
300. Len Castle
Large circular stoneware bowl, tenmoku and jun type glaze to the exterior with jun and white feldspathic glaze to the well. Made and fired at Paturoa Road. Impressed initials. D.310mm \$300 – \$500
301. Len Castle
Rectangular stoneware dish with tenmoku glaze & copper red overglaze to the well. Circa 1980. Made and fired at South Titirangi Road. Impressed initials. W.250mm \$200 – \$400
302. Len Castle
Fossil, ovoid earthenware form with textured surface. Circa 2004. Impressed initials. D.170mm \$250 – \$500
303. Len Castle
Fossil, compressed oval earthenware form with textured surface. Circa 2004. Impressed initials D.160mm \$250 – \$500
304. Len Castle
Fossil, starfish form in earthenware. Impressed initials. Circa 2004. L.140mm \$200 – \$500
305. Len Castle
Volcanic ejecta, earthenware with red lava glaze to the interior. Circa 2007. L.160mm. Illustrated: [Len Castle Making the molecules dance](#), p.12 \$300 – \$500
306. Len Castle
Volcanic ejecta, earthenware with red lava glaze to the interior. Circa 2007. Impressed initials. L.150mm \$250 – \$500
307. Len Castle
Volcanic bomb, earthenware. Circa 2007. Impressed initials. L.190mm \$150 – \$250
308. Len Castle
Stoneware pouring dish with rutile glaze over iron. Made and fired at Paturoa Road Impressed initials. D.200mm \$100 – \$200
- 308a. Len Castle
Large stoneware bowl, tenmoku glazed exterior with jun type glaze to the well. Impressed initials. D.350mm \$400 – \$800
309. Len Castle
Sea secret, large oval form with alkaline blue glazed interior. 2000. Impressed initials. D.280mm \$400 – \$800
310. Len Castle
Blue Night Sky 2007. Earthenware bowl of tapering conical shape with alkaline copper cobalt glaze. Fired at Warkworth in an electric kiln. D.420mm. Illustrated, [Len Castle Making the molecules dance](#), p.226. *This bowl was one of Len's favourite pieces from his personal collection and was kept in his bedroom.* \$1500 – \$2500
311. Len Castle
Stoneware cylindrical vase decorated with incised concentric bands & mottled blue and green glaze, unique ridge to the interior. Impressed initials. H.230mm *This vase was kept in Len's Bedroom along with above noted bowl.* \$400 – \$800
312. Len Castle
Crater Lake bowl, matt grey stained earthenware with turquoise alkaline glazed well. D.450mm. *This bowl was kept in Len's study.* \$1000 – \$2000

313. Len Castle
Branch vase, press moulded stoneware with tenmoku glaze. Unusual script signature to the lower side wall and repeated on the base. Made and fired at South Titirangi Road circa early 1980's. [Glaze imperfection evident to the underside of the top rim]. H.370mm
\$1500 – \$2500
314. Len Castle
Slab vase, press moulded stoneware with potash and soda crackled feldspathic glaze. Made and fired at South Titirangi Road. Impressed initials. H.360mm
\$1000 – \$2000
315. Len Castle
Fossilised Bird, earthenware. Circa 1998. Impressed initials and date. L.240mm. Illustrated: [Len Castle Potter](#), p.108
\$600 – \$1000
316. Len Castle
Stoneware bowl with shino-type glaze. Impressed initials. D.250mm
\$200 – \$500
317. Len Castle
Fossil, earthenware. Circa 2006. Impressed initials to the base. L.230mm
An almost identical example illustrated in [Len Castle: Making the Molecules Dance. Ceramics 1948-2008](#), Lopdell House Gallery 2008
\$250 – \$500
318. Len Castle
Small stoneware form with twin apertures and blue glazed interior. Impressed initials to the base. L.100mm
\$200 – \$400
319. Len Castle
Fossil, earthenware with textured unglazed surface & umber pigment. Circa 2004. Incised initials. L.140mm
\$250 – \$500
320. Len Castle
Fossil, earthenware with unglazed textured surface. Circa 2004. Impressed initials. L.120mm
\$100 – \$300
321. Fossil, bowl shaped form with pierced unglazed surface. Circa 2004. Impressed initials. D.130mm
\$300 – \$600
322. Len Castle
Fossil, ovoid shape with pierced and textured surface with blue alkaline glazed well. Circa 2004. Incised initials. D.70mm
\$300 – \$600
323. Len Castle
Fossil, elliptical shape with unglazed textured surface and blue alkaline glazed well. L.120mm
\$300 – \$600
324. Len Castle
Fossil, hanging form with small aperture, ribbed surface & pierced lug to allow suspension to the rear. Circa 2004. Incised initials. L.130mm
\$250 – \$500
325. Len Castle
Hanging form, bottle shaped, unglazed with umber pigmented surface. L.230mm
\$300 – \$600
326. Len Castle
Fossil form with deeply grooved and textured surface. Incised initials. 160 x 110mm
\$300 – \$500
327. Len Castle
Small stoneware bowl, tenmoku underglaze with calcite overglaze & wax resist quince decoration. Impressed initials. D.170mm
\$200 – \$400
328. Len Castle
Two fossils, unglazed and textured earthenware with blue glazed interior. L. 100mm and 110mm
\$150 – \$250
329. Len Castle
Stoneware trinket box, sea shell fumed exterior. Blue glazed interior. Fired in Kelvin Bradford's kiln. Impressed initials. Illustrated [Len Castle Potter](#), p.212, and p.167.
\$400 – \$800
330. Len Castle
Stoneware tankard with ash glaze.
\$50 – \$100
331. Len Castle
Stoneware bowl with shino-type glaze. D.230mm
\$250 – \$500
332. Len Castle
Volcanic lava red glazed bowl, earthenware with cadmium-selenium lava glaze. Impressed initials to the base. D.390mm
\$1000 – \$2000
333. Len Castle
Large stoneware bowl, Mirror black underglaze, black and bluish Chun type overglaze. Made and fired at South Titirangi road. Impressed initials to the base. D.370mm. A similar bowl illustrated in [Making the Molecules Dance: Len Castle Ceramics a Retrospective Exhibition 1947-1994](#) – catalogue number 105.
\$400 – \$800
334. Len Castle
Two Stoneware bowls matching the above lot but of smaller size. One with impressed initials, the other unmarked but with affixed sticker. D.210 and 200mm
\$300 – \$700
335. Len Castle
Small stoneware blue glazed bowl with textured surface. Impressed initials. D.200mm
\$100 – \$200
336. Len Castle
Earthenware spherical bowl, the well with stippled detailing & glazed in deep blue. Impressed initials to the base. D.310mm
\$350 – \$700
337. Len Castle
Earthenware spherical bowl with deep blue glaze. Impressed initials to the base. D.300mm
\$400 – \$800
338. Len Castle
Large earthenware [Night Sky](#) series bowl with textured interior rim and glazed in deep blue. Circa 1990. Impressed initials. H.530mm
\$1000 – \$2000
339. Len Castle
Large Crater Lake bowl, earthenware with matt grey stained exterior, the interior with textured rim & graduating blue glaze pooling to deep blue. Impressed initials. D.500mm.
\$1000 – \$2000
340. Len Castle
Spherical bowl, earthenware with deep blue glaze. Incised initials. D.430mm
\$600 – \$1200
341. Len Castle
Large spherical bowl, earthenware with textured surface and deep blue glaze. Impressed initials. D.500mm
\$800 – \$1600
342. Len Castle
Unique Rock Pool bowl, textured unglazed exterior with sculptured rim and deep blue alkaline glaze to the interior. Circa 2004. Impressed initials. D.400mm. Illustrated [Len Castle Making the Molecules Dance](#), p. 84 (detail of the well) and p. 85
\$1500 – \$3000
343. Large and unusual stoneware bowl with sculptural cavetto, unglazed exterior & deep mauve glaze to the interior. D.470mm
\$800 – \$1600
344. Len Castle
Small stoneware bottle vase with colonial shino glaze. H.120mm
\$50 – \$100
345. Len Castle
Celadon glazed bowl. Impressed initials.
\$50 – \$100
346. Earthenware bowl, hand modelled with matt grey stained exterior and unglazed interior rim with blue glaze to the well. D.310mm
\$350 – \$700





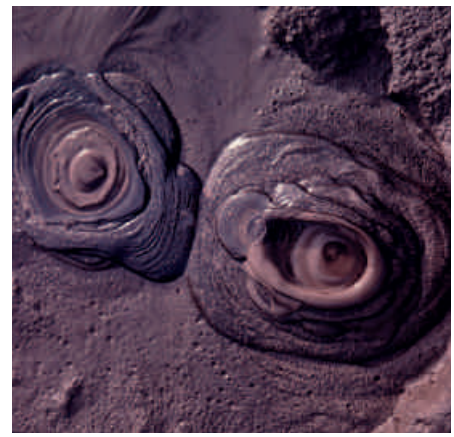
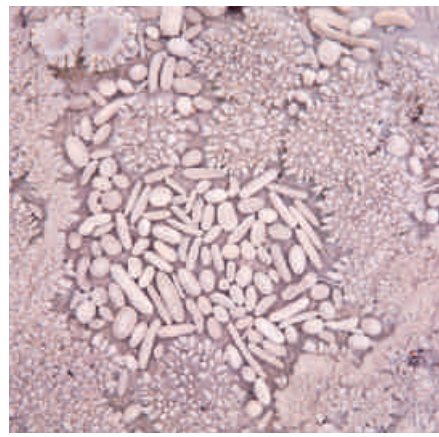
Other pottery and pieces collected by Len Castle and held in this personal collection

347. Collection of stones and pebbles found by Len Castle and kept in his personal collection as reference pieces.
\$100 – \$200
348. River polished pounamu stone together with another piece of pounamu and other fossils and objects found and kept by Len Castle as reference pieces.
\$100 – \$200
349. Geoff Fairburn
A decorative Gourd, the surface incised and decorated with geometric motifs. H. 470mm
A similar example illustrated in [Craft New Zealand: The art of the craftsman by Doreen Blumhardt and Brian Brake, p.199](#)
\$150 – \$300
350. Ian Smail
Lidded stoneware crock with handles to the shoulder, salt glazed. H.290mm
\$200 – \$400
351. Ross Mitchell- Anyon
Stoneware casserole dish, salt glazed.
D.310mm
\$200 – \$300
352. Michael O'Donnell
Stoneware salt glazed bowl with combed surface decoration.
\$100 – \$200
353. Jim Greig
Stoneware dish glazed in orange blue and green. Incised initials to the base. D.280mm
\$400 – \$800
354. Matt Mclean
Four stoneware salt glazed mugs together with two shino glazed vases probably by Peter Oxborough.
\$30 – \$50
355. Chester Nealie
Small green glazed vase with shell inclusions together with a small bottle and a stoneware bottle with stopper. (3 items)
\$100 – \$200
356. Chester Nealie
Two Anagama fired stoneware vases. One with attached label. Purchased by Len Castle at Ron Sang's annual arts and crafts exhibition. H.190 and 120mm
\$200 – \$400
357. Graham Ambrose
Two earthenware bottle vases & a bowl. Impressed initials to each. (3 items)
\$50 – \$100
358. A Japanese Arita plate together with another dish painted with a carp.
\$30 – \$50

359. Korean Blanket chest with iron fittings.
1000 x 480mm
\$300 – \$600

Other Len Castle pottery

360. Len Castle
Blossom Vase. A large and impressive example of this iconic form. The press moulded vase with jun glaze over tenmoku. Circa 1980. Impressed initials to the base. [A small hairline crack at the base has been professionally restored]. H. 560mm. A similar vase illustrated on the cover of [Len Castle Potter](#) by Ron Sang and Len Castle, 2002. Note: offered with a signed copy of [Len Castle Potter](#).
\$5000 – \$10 000
361. Len Castle
Sulphurous bowl, earthenware. Circa 2010. Impressed initials to the foot. D.470mm
\$3000 – \$5000
- 361a. Len Castle
Inverted Volcano, moulded vase. Earthenware with grey textured exterior and red lava glaze to the interior. Impressed initials to the base. W.840mm
\$6000 – \$8000
362. Len Castle
Stoneware hanging form of circular flattened shape with pierced aperture, textured surface, iron oxide wash and ochre pigment. Impressed initials. D. 360mm. Illustrated [Len Castle Potter, p.219](#)
\$500 – \$1000
363. Len Castle
Stoneware hanging form with textured surface, iron oxide wash and ochre pigment. D. 280mm
\$400 – \$600
364. Len Castle
Stoneware oil bottle, shino-type glaze. A rare example complete with original stoneware stopper. Impressed initials. H.140mm
\$250 – \$500
365. Len Castle
Stoneware oil bottle, shino-type glaze. A rare example complete with original stoneware stopper. Impressed initials. H.140mm
\$250 – \$500
366. Len Castle
Stoneware flagon made for the Deer Stalkers Inn. Impressed initials. H.260mm
\$400 – \$600
367. Len Castle
Large stoneware bowl with shino and cracked feldspathic glaze. Impressed initials. D.350mm
\$600 – \$1000
368. Len Castle
Large earthenware bowl with green glaze. This bowl is one of only a small number of this size with green glaze. Impressed initials to the foot. D.420mm
\$2000 – \$2500
369. Len Castle
Large earthenware conical bowl with blue glaze. Impressed initials to the foot. D.410mm
\$2000 – \$2500
370. Len Castle
Alkaline pool bowl with silica rubbed oxide textured exterior. The well with deep blue/ turquoise glaze. Impressed initials to the foot. D.340mm
\$2000 – \$2500
371. Len Castle
Large earthenware bowl with rich red lava glaze. Impressed initials to the foot. D.400mm
\$2000 – \$3000
372. Len Castle
Stoneware pouring bowl with white ash glaze. Impressed initials. W.270mm
\$350 – \$500
373. Len Castle
Stoneware bowl with pitted blue alkaline glaze. Impressed initials. D.355mm
\$500 – \$1000
374. Len Castle
Stoneware cylindrical vase decorated with incised concentric bands & mottled blue and green glaze. Impressed initials. H.193mm
\$300 – \$500
375. Len Castle
Stoneware cylindrical vase decorated with incised concentric bands with mottled blue and green glaze. Impressed initials. H.173m
\$200 – \$300
376. Len Castle
Inverted Volcano, moulded earthenware vase with blue glazed interior. This form is a unique and early example of Len's volcano forms. Impressed initials. L.910mm.
\$3000 – \$4000
377. Len Castle bowl, iron glaze over tenmoku. D. 270mm
\$300 – \$500
378. Len Castle
Large stoneware dish with textured well and green/ grey ash glaze decorated with an impressed stamp design. Impressed initials to the base. L.450mm
\$800 – \$1400
379. Len Castle
Large stoneware dish with jun glaze over tenmoku, wax resist decoration to the well. Impressed initials to the base. L. 430mm
\$600 – \$1200
380. Len Castle
Hanging form with umber pigmented surface. L. 250mm
\$200 – \$300
381. Len Castle
Stoneware tenmoku mug together with a Peter Stichbury mug.
\$20 – \$40



383

383

383

382. Len Castle
Stoneware jug, ash glaze over tenmoku.
Impressed initials. H. 170mm
\$50 – \$100

- 17 Double mud pool
18 Single mud pool with elegant light reflection
19 Large playing mud pool
20 Variant of (5) above
\$4000 – \$8000

384. Theo Schoon
A group of three medium format Kodak
Ekachrome colour transparencies depicting
Kowhaiwhai designs in red, black and white.
\$600 – \$1200

390. Hugo Munsterberg The Fold Arts of Japan. US:
Charles E. Tuttle and Co 1961 reprint. Inscribed
by Len Castle.
Col Minogue and Robert Sanderson Wood-
fired Ceramics. Contemporary Practices.
London: Craftsman House 2000. Signed by
Len Castle.
Masakazu Kusakabe & Marc Lancet Japanese
Wood-Fired Ceramics. KP Books 2005.
Trujimura ceramics. Frankfurt: Japan Art 1993.

391. Peter Lane Studio Porcelain. Contemporary
design and technique. London: Pitman House
1980. Signed and dated by Len Castle 1981.
Peter Lane Ceramic Form. London: Collins
1988. Signed and dated by Len Castle 1988.
Alison Littlemore & Kraig Carlstrom Nine Artist
Potters. Sydney: Jack Pollard.

392. Tim Andrews Raku. London: A & C Black 2005,
2nd edition. Signed and dated by Len Castle
2005.
Robert Piepenburg Raku Pottery. Macmillan
1972. Signed by Len Castle.
Christopher Tyler & Richard Hirsch Raku.
Techniques for Contemporary Potters. London:
Pitman and Sons 1975. Signed and dated by
Len Castle 1978.

393. Kenneth Clark The Potter's Manual. London:
Macdonald and Co 1983. Signed by Len Castle
Greg Daly Glazes and Glazing Techniques.
Aust: Kangaroo Press 1995.

394. Emmanuel Cooper Ten thousand Years of
Pottery. British Museum Press 2000. Signed
by Len Castle.
John Gibson Pottery Decoration.
Contemporary Approaches. London: A & C
Black 1987. Signed by Len Castle.

395. Jim & Mary Barr Contemporary New Zealand
Painters. Photographs by Marti Friedlander.
Martinborough: Alister Taylor 1980. Volume.1.
[only one volume published.] Signed by Len
Castle.
Ascent – A Journal of the Arts in New Zealand.
Caxton Press, Vol. 1 No. 4. Signed by Len
Castle.
Eric Lee Johnson [editor] Art Year Book No.
7. Well: Wingfield Press 1951. Signed by Len
Castle.

Len Castle Reference Library offered at no reserve

385. Roy Andrew Miller Japanese Ceramics. Japan:
Toto Shuppan Co Ltd 1961. Signed by Len
Castle.
Susan Peterson Shoji Hamada. A Potter's Way
and Work. Tokyo: Kodansha International Ltd
1974, 1st edition. Signed by Len Castle.

386. Kawai Kanjiro's House. Text in Japanese. Signed
Kyoto, Len Castle.

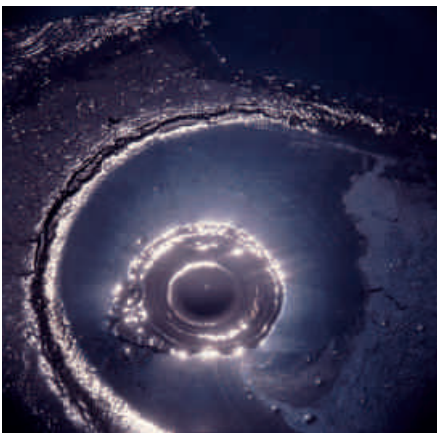
387. Lucie Rie Issey Miyake Meets Lucie Rie. Japan:
Miyake Design Studio 1989. Signed by Len
Castle.
Tony Birks The Complete Potters Companion.
London: Conran Octopus 1997 new edition.
Signed by Len Castle.

388. Donna O'Meara Volcano. London: Cassell
Illustrated 2007. Signed and dated by Len
Castle 2009.
Karen Wind Volcanoes of the South Wind.
Tongariro Natural History Society. Signed by
Len Castle.
E.F. Lloyd Geology of Whakarewarewa Hot
Springs. NZ Geological Survey 1975. Signed
and dated by Len Castle 1991. Plus two other
items on volcanoes, unsigned. (5 items)

389. Marion Whybrow The Leach Legacy. Bristol:
Sansom & Co 1996. Signed by Len Castle.
Bernard Leach A Potter's Book. London: Faber
& Faber 1945, reprint.
Bernard Leach A Potter in Japan 1952 – 1954.
London: Faber & Faber 1967.
Bernard Leach The Potter's Challenge. London:
Souvenir Press 1976.

Comprising the following images:

- 1 Thermal water pool composition in orange –
light reflection in centre
- 2 Thermal water pool composition in orange –
vertical striations of colour and depth
- 3 Variant of above
- 4 Abstract composition consisting of encrusted
hardpan thermal formations
- 5 Variant of above with note: Cracking mud and
sinter crust Waiotapu photo: Theo Schoon
- 6 Variant of above
- 7 Variant of above
- 8 Variant of above
- 9 Bleached composition – encrusted stone and
landforms
- 10 Dried mud vents
- 11 Variant of above
- 12 Single dried vent from above
- 13 Bleached composition
- 14 Congealing mud pool
- 15 Small active mud pool
- 16 Bubbling Mud



383



384



384

396. Japanese Pottery Book. Japan: Gakken 1978 – text in Japanese, illustrated, folio, No 20 on spine, in slipcase. Signed and dated by Len castle 1978.
Japanese Art Book. Japan: Shueisha 1976 – text in Japanese, illustrated, folio, No.12 on spine, in slipcase.
397. Group of 14 Japanese books on ceramics, pottery and art, some signed and dated by Len Castle.
398. Group of 18 books on Ancient art, travel etc – many signed by Len Castle.
399. Suzanne Et Georges Ramie Ceramiques de Picasso. Geneva: Editions D'Art Albert Skira. Folio of plates. Signed by Len Castle.
G.H.S. Bushnell Ancient American Pottery. London: Faber & Faber 1955. Signed and dated by Len Castle 1956.
West Marshall Slab Building. London: A & C Black 1982.
Herbert Read Art and Industry. London: Faber & Faber 1947 reprint. Signed and dated by Len Castle 1953.
Ian Currie Stoneware Glazes. Aust: Bootstrap Press 1985. Signed by Len Castle.
Arthur Lane Early Islamic Pottery. London: Faber & Faber 1933. Signed and dated by Len Castle 1956.
400. Doreen Blumhardt & Brian Brake Craft New Zealand. Reed 1981. Signed by Brian brake, and various New Zealand potters including Len Castle, Peter and Catherine Stichbury and Ted Dutch.
401. Edmund de Waal Bernard Leach. Tate Gallery Publishing. Signed by Len Castle.
Janet Mansfield Contemporary Ceramic Art in Australia and New Zealand. Craftsman House 1995. Signed by Len Castle.
Helen Schamroth 100 New Zealand Craft Artists. Godwit Press 1998. Signed by Len Castle.
402. T. Barrow [3 volumes, all inscribed to Len Castle by Terence Barrow]
An Illustrated Guide to Maori Art. University of Hawaii Press 1984.
The Decorative Arts of the New Zealand Maori. Reed 1964.
- Art of Polynesia. Hemmeter Pub Corp 1990.
Also by T. Barrow Art and Life on Polynesia. Reed 1972.
403. Brian Brake, James McNeish, D. Simmons Art of the Pacific. Wellington: Oxford Univ Press 1979. Signed by Len Castle.
Te Maori. Maori art from the New Zealand Collections. Heinemann 1984. Signed by Len Castle.
404. Leach Bernard [intro] The Living Treasures of Japan. Kodansha 1973. Signed and dated by Len Castle 1974.
Herbert H. Sanders The World of Japanese Ceramics. Kodansha 1967. Signed and dated by Len Castle 1968.
Painted Buddhas of Xinjiang. The British Museum Press.
Selected Treasures of The National Museum of Korea. Samhwa Pub Co 1973. Signed and dated by Len Castle 1974.
Ryoji Kuroda Shino. Kodansha 1984.
Art of the Far East. Batsford, Iris Colour Book. Signed and dated by Len Castle 1955.
405. Joseph Grebanier Chinese stoneware Glazes. Ln: Pitman 1975. Signed and dated by Len Castle 1976.
Catalogue of the Special Exhibition of Ting Ware White Porcelain. National Palace Museum, in slipcase. Signed Len Castle.
Catalogue of the Special Exhibition of Sung Dynasty Kuan Ware. National Palace Museum. Signed by Len Castle.
406. Andy Goldsworthy. London: Viking Press 1990. Signed Len Castle.
Peter Selz Sam Francis. New York: Harry Abrams 1982. Signed Len Castle.
James Ross Painting from the Gibbs Collection 2 volumes. New Zealand Modernism – The Content of Form and Expressionism and Figuration.
407. Robert Hughes The Shock of the New. Art and the Century of Change. British Broadcasting Corporation 1980, 1st edition. Signed Len Castle.
Leni Riefenstahl – People of Kau. London: Collins 1977 reprint.
408. Jack Troy Salt Glazed Ceramics. London: Pitman 1977. Signed and dated by Len Castle 1978.
Edmund de Waal Ceramics, Design Source Book. London: New Holland 1999. Signed Len Castle.
Henry Varnum Poor A Book of Pottery. From Mud Into Immortality. London: Pitman 1959. Signed and dated by Len Castle 1961.
J.C. Schofield Materials for the New Zealand Potter. NZ Geological Survey 1977.
409. Two boxes of assorted books from the Len Castle library.
410. Series of 10 Japanese traditional pottery folios with colour plates. All signed by Len Castle. Text in Japanese and three with a single page of handwritten notations. Potters include Hamada, Hagi pottery and Arakawa.
411. New Zealand Potter – 7 issues 1959 – 1983. Catalogue Helen Mason Commitment to Clay. Hastings City Art Gallery.
Barry Brickell A New Zealand Potter's Dictionary. Reed Methuen 1985.
412. Len Castle catalogue Making the Molecules Dance. A Retrospective Exhibition 1947-1994. Notebook titled in pen on front cover. Len Castles Mixtures.
413. Bundle of pottery books
Bernard Leach Essays in Appreciation. Glenn C. Nelson Ceramics. A Pottery handbook.
Bernard Leach A Potter's Handbook. John Kenny The Complete Book of Pottery Making.
The Earl H. Morris Memorial Pottery Collection.
Tapsell Paul Pukaki a Comet Returns.

Conditions of sale

Please note: it is assumed that all bidders at auction have read and agreed to the conditions described on this page.
ART+OBJECT directors are available during the auction viewing to clarify any questions you may have.

1.

Registration: Only registered bidders may bid at auction. You are required to complete a bidding card or absentee bidding form prior to the auction giving your correct name, address and telephone contact + supplementary information such as email addresses that you may wish to supply to ART+OBJECT

2.

Bidding: The highest bidder will be the purchaser subject to the auctioneer accepting the winning bid and any vendor's reserve having been reached. The auctioneer has the right to refuse any bid. If this takes place or in the event of a dispute the auctioneer may call for bids at the previous lowest bid and proceed from this point. Bids advance at sums decreed by the auctioneer unless signaled otherwise by the auctioneer. No bids may be retracted. The auctioneer retains the right to bid on behalf of the vendor up to the reserve figure.

3.

Reserve: Lots are offered and sold subject to the vendor's reserve price being met.

4.

Lots offered and sold as described and viewed: ART+OBJECT makes all attempts to accurately describe and catalogue lots offered for sale. Notwithstanding this neither the vendor nor ART+OBJECT accepts any liability for errors of description or faults and imperfections whether described in writing or verbally. This applies to questions of authenticity and quality of the item. Buyers are deemed to have inspected the item thoroughly and proceed on their own judgment. The act of bidding is agreed by the buyer to be an indication that they are satisfied on all counts regarding condition and authenticity.

5.

Buyers premium: The purchaser by bidding acknowledges their acceptance of a buyers premium of 15% + GST on the premium to be added to the hammer price in the event of a successful sale at auction.

6.

ART+OBJECT is an agent for a vendor: A+O has the right to conduct the sale of an item on behalf of a vendor. This may include withdrawing an item from sale for any reason.

7.

Payment: Successful bidders are required to make full payment immediately post sale – being either the day of the sale or the following day. If for any reason payment is delayed then a 20% deposit is required immediately and the balance to 100% required within 3 working days of the sale date. Payment can be made by Eftpos, bank cheque or cash. Cheques must be cleared before items are available for collection. Credit cards are not accepted.

8.

Failure to make payment: If a purchaser fails to make payment as outlined in point 7 above ART+OBJECT may without any advice to the purchaser exercise its right to: a) rescind or stop the sale, b) re offer the lot for sale to an underbidder or at auction. ART+OBJECT reserves the right to pursue the purchaser for any difference in sale proceeds if this course of action is chosen, c) to pursue legal remedy for breach of contract.

9.

Collection of goods: Purchased items are to be removed from ART+OBJECT premises immediately after payment or clearance of cheques. Absentee bidders must make provision for the uplifting of purchased items (see instructions on the facing page)

10.

Bidders obligations: The act of bidding means all bidders acknowledge that they are personally responsible for payment if they are the successful bidder. This includes all registered absentee or telephone bidders. Bidders acting as an agent for a third party must obtain written authority from ART+OBJECT and provide written instructions from any represented party and their express commitment to pay all funds relating to a successful bid by their nominated agent.

11.

Bids under reserve & highest subject bids: When the highest bid is below the vendor's reserve this work may be announced by the auctioneer as sold 'subject to vendor's authority' or some similar phrase. The effect of this announcement is to signify that the highest bidder will be the purchaser at the bid price if the vendor accepts this price. If this highest bid is accepted then the purchaser has entered a contract to purchase the item at the bid price plus any relevant buyers premium.

Important advice for buyers

The following information does not form part of the conditions of sale, however buyers, particularly first time bidders are recommended to read these notes.

A.

Bidding at auction: Please ensure your instructions to the auctioneer are clear and easily understood. It is well to understand that during a busy sale with multiple bidders the auctioneer may not be able to see all bids at all times. It is recommended that you raise your bidding number clearly and without hesitation. If your bid is made in error or you have misunderstood the bidding level please advise the auctioneer immediately of your error – prior to the hammer falling. Please note that if you have made a bid and the hammer has fallen and you are the highest bidder you have entered a binding contract to purchase an item at the bid price. New bidders in particular are advised to make themselves known to the sale auctioneer who will assist you with any questions about the conduct of the auction.

B.

Absentee bidding: ART+OBJECT welcomes absentee bids once the necessary authority has been completed and lodged with ART+OBJECT. A+O will do all it can to ensure bids are lodged on your behalf but accepts no liability for failure to carry out these bids. See the Absentee bidding form in this catalogue for information on lodging absentee bids. These are accepted up to 2 hours prior to the published auction commencement.

C.

Telephone bids: The same conditions apply to telephone bids. It is highly preferable to bid over a landline as the vagaries of cellphone connections may result in disappointment. You will be telephoned prior to your indicated lot arising in the catalogue order. If the phone is engaged or connection impossible the sale will proceed without your bidding. At times during an auction the bidding can be frenetic so you need to be sure you give clear instructions to the person executing your bids. The auctioneer will endeavour to cater to the requirements of phone bidders but cannot wait for a phone bid so your prompt participation is requested.

D.

New Zealand dollars: All estimates in this catalogue are in New Zealand dollars. The amount to be paid by successful bidders on the payment date is the New Zealand dollar amount stated on the purchaser invoice. Exchange rate variations are at the risk of the purchaser.

Absentee bid form

Auction No. 60

NZ Ceramics / Karakter Collection /
Len Castle Estate
25 October 2012

Asian Art
6 November 2012

David Cooke Collection & Fine
Decorative Arts
7 November 2012

This completed and signed form authorizes ART+OBJECT to bid on my behalf at the above mentioned auction for the following lots up to prices indicated below. These bids are to be executed at the lowest price levels possible.

I understand that if successful I will purchase the lot or lots at or below the prices listed on this form and the listed buyers premium for this sale (15%) and GST on the buyers premium. I warrant also that I have read and understood and agree to comply with the conditions of sale as printed in the catalogue.

Lot no.	Description	Auction Date	Bid maximum (New Zealand dollars)
_____	_____	_____	_____
_____	_____	_____	_____
_____	_____	_____	_____
_____	_____	_____	_____
_____	_____	_____	_____
_____	_____	_____	_____
_____	_____	_____	_____
_____	_____	_____	_____
_____	_____	_____	_____
_____	_____	_____	_____
_____	_____	_____	_____

Payment and Delivery ART+OBJECT will advise me as soon as is practical that I am the successful bidder of the lot or lots described above. I agree to pay immediately on receipt of this advice. Payment will be by cash, cheque or bank transfer. I understand that cheques will need to be cleared before goods can be uplifted or dispatched. I will arrange for collection or dispatch of my purchases. If ART+OBJECT is instructed by me to arrange for packing and dispatch of goods I agree to pay any costs incurred by ART+OBJECT. Note: ART+OBJECT requests that these arrangements are made prior to the auction date to ensure prompt delivery processing.

Please indicate as appropriate by ticking the box:

☐ PHONE BID

☐ ABSENTEE BID

MR/MRS/MS: _____

SURNAME: _____

POSTAL ADDRESS: _____

STREET ADDRESS: _____

BUSINESS PHONE: _____

MOBILE: _____

FAX: _____

EMAIL: _____

Signed as agreed: _____

To register for Absentee bidding **this form must be lodged with ART+OBJECT by 2pm** on the day of the published sale time in one of three ways:

1. Fax this completed form to ART+OBJECT +64 9 354 4645
2. Email a printed, signed and scanned form to: info@artandobject.co.nz
3. Post to ART+OBJECT, PO Box 68 - 345 Newton, Auckland 1145, New Zealand

ART+OBJECT 3 Abbey Street, Newton, Auckland, New Zealand. Telephone +64 9 354 4646, Freephone 0800 80 60 01