

CATALOGUE 63
MARCH 2013

NEW COLLECTORS ART
5 MARCH

ASIAN ART
6 MARCH

MODERN DESIGN AND
DECORATIVE ARTS
7 MARCH

ART +
OBJECT





581



578



580



570



584



582



575



577



579



New Collectors Art

Tuesday 5 March at 6.30pm

Asian Art

Wednesday 6 March at 6.30pm

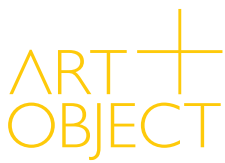
Modern Design and Decorative Arts

Thursday 7 March at 6.30pm



Martin Creed, *Work No. 1273*
(lot 20), Holmegaard Gul vases (lots
743a & 743b), Clausen and Son Danish
sideboard (lot 674),
Len Castle bird-headed bowl (lot 744),
Richard Hornby design coffee table
(lot 679)

WELCOME TO A+O'S FIRST CATALOGUE OF 2013.



ART+OBJECT

3 Abbey Street
Newton
Auckland

PO Box 68 345
Newton
Auckland 1145

Telephone: +64 9 354 4646
Freephone: 0 800 80 60 01
Facsimile: +64 9 354 4645

info@artandobject.co.nz
www.artandobject.co.nz

Front cover:

Lot 583
A fine set of
Waterbuck horns

Rear cover:

Lot 594
13 point taxidermy
Stag's head

Coming in at over 800 lots this is a large and diverse offering presented over three nights in early March. 2012 was a record year for ART+OBJECT and the directors and staff would like to thank all of our clients and friends for choosing A+O. From landmark collections such as The Les and Milly Paris Collection to smaller and fascinating holdings of Crown Lynn, Chinese Jade, Modern Design and Contemporary Art 2012 saw A+O offer numerous collections assembled over many decades.

This catalogue features two genres which have experienced heightened collector interest in recent years, 20th century design and Asian art. With this growth comes a greater level of knowledge and a burgeoning sense of community. Again we would like to thank our buying and selling clients for their generosity in sharing their knowledge and enthusiasm. The Asian and decorative arts section of the catalogue includes selected pieces from the collection of well-known Hawkes Bay antique dealer and auctioneer Kevin Percy who after fifty years as an institution in the lower North Island is passing the baton to the next generation. We are pleased to be able to offer a few choice items in this catalogue as Kevin's eye for quality is renowned.

The viewing for the catalogue will be a lively affair as collectors and the curious meet and swap stories and consider the future direction of their collections. Please note that lot 538 in the Asian catalogue, the *shunga* scroll, is of an explicit nature. It will not be prominently displayed and will be available to view on request.

We look forward to welcoming you to our first catalogue of 2013. Please take time to view the works which will be offered to raise funds for a project to honour Hone Tuwhare and create an ongoing legacy that will benefit New Zealand into the future.



Fundraising Art Auction for The Hone Tuwhare Charitable Trust 5th March 2013

The Hone Tuwhare Charitable Trust is delighted to have been gifted these five stunning artworks by John Pule, Ans Westra, Stanley Palmer, Tracey Tawhiao and Wayne Youle. These artworks are lots 34–38 on pages 20–21 in this catalogue.

In 2012 Hone's crib was secured for the trust thanks to a private philanthropic organisation. This year we aim to raise \$500,000 to renovate Hone's crib and studio – and build a multi-purpose whare / visitor centre to host writers and their whanau, artists or actors, small groups and school visits.

In the stunning Kaka point and Catlins area, this will be the first residence in the home of a Maori writer. Hone's inclusive nature and generosity is reflected in our kaupapa.

This is a great opportunity to support the trust in this exciting project. For more information, please see the trust's website: www.honetuwhare.org.nz

First he will want your car,
then the family firm.
Are you OK with that?



Intergenerational succession decisions can be very uncomfortable by nature. However, highly thought-out and no nonsense advice from wealth and business expert Nigel Smith will facilitate every stage of the process.

Covisory Partners provides independent advice, backed by solid wealth, tax and business strategies. Our clients tell us Nigel's straight forward approach is refreshing, so we invite you to begin a discrete discussion so you can not only experience it yourself, but also benefit earlier from the peace-of-mind it will almost certainly bring.

CONSULTING +
PRIVATE CLIENTELE

Ph 0800 898 181

Covisory
PARTNERS

Wealth | Tax | Business

Nigel Smith
nigel@covisory.com
www.covisory.com



Colin McCahon

Noughts and Crosses, Series II, No. V

synthetic polymer paint on Steinbach paper
mounted to hardboard
title inscribed, signed with artist's initials C.
McC and dated '76
1095 x 730mm

Exhibited

'Colin McCahon: Paintings—Noughts and
Crosses, Rocks in the Sky, On the Road',
Barry Lett Galleries, Auckland, 23 August – 3
September 1976, Cat. No. 2.
'Colin McCahon: A Question of Faith', Stedelijk
Museum, Amsterdam, The Netherlands,
30 August – 10 November, 2002 (touring
Australasia 2002 – 2004).

Illustrated

Marja Bloem and Martin Browne, Colin
McCahon: A Question of Faith (Nelson, 2002),
p. 135.

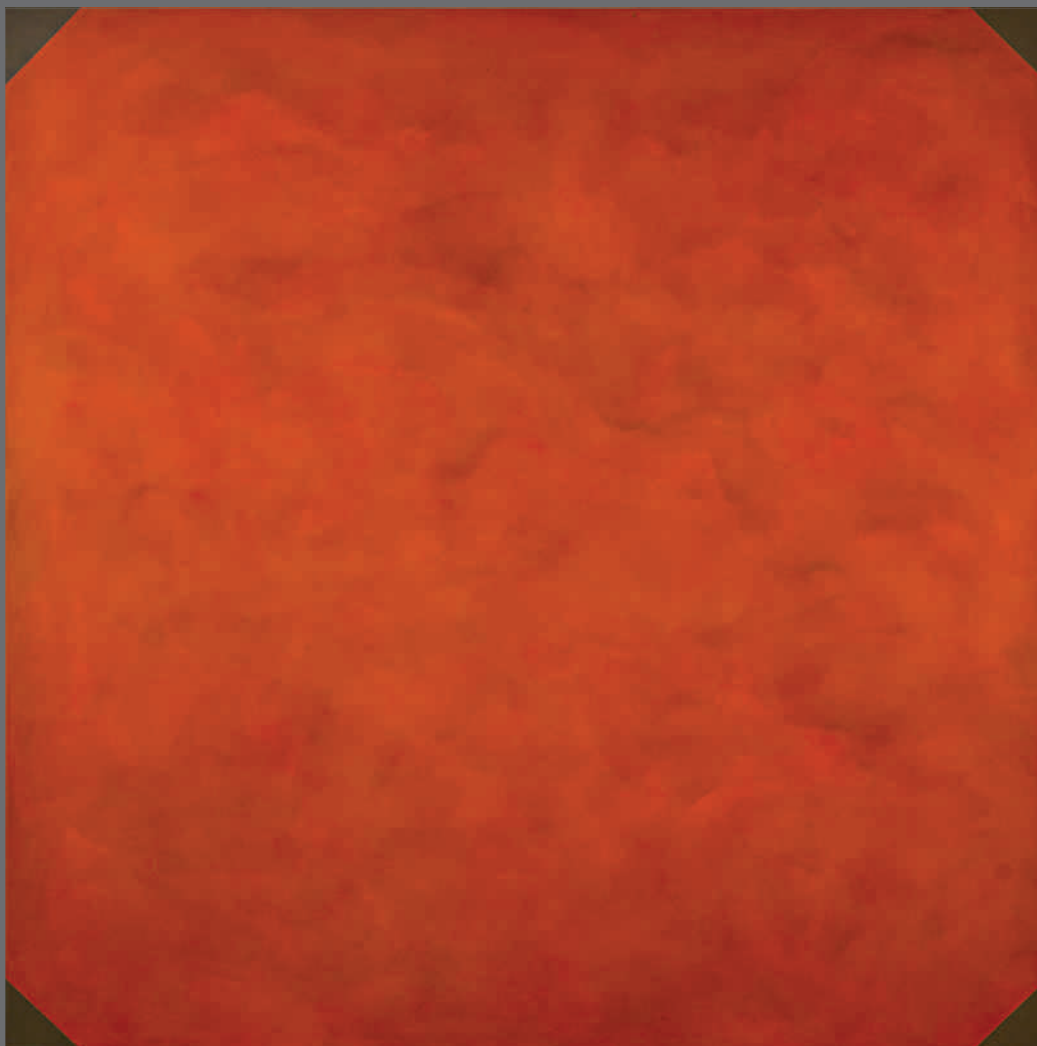
Reference

Colin McCahon Database (www.mccahon.co.nz) CM001522.

Provenance

Collection of Kim Wright, Auckland.
Private collection, Australia.

\$230 000 – \$300 000



Important Paintings & Contemporary Art

THURSDAY 11 APRIL

CONSIGNMENTS NOW INVITED UNTIL 15 MARCH

ART+OBJECT announces the production of an especially significant catalogue and invites expressions of interest from potential consignors. Spaces are limited in this catalogue and early consignment is advisable. To discuss any aspect of the current market along with our plans for this auction catalogue please contact Director of Art, Ben Plumbly.

ben@artandobject.co.nz
021 222 8183

Milan Mrkusich
Painting Red 1976
acrylic on canvas
title inscribed, signed and dated '76 verso
1800 x 1730mm
Provenance
Private collection, Wellington.
Private collection, Auckland.
\$65 000 – \$85 000



Garth Chester bent plywood
Curves chair
\$8790



Sigurd Ressell for Vatne Mobler
Falcon chair
\$4920



A pair of Hans Wegner GE375
chairs in oak
\$5390



Charles and Ray Eames
for Herman Millar
Eames sofa in black leather
\$8205



Milo Baughman for Selig
tub sofa
\$6680

2012 HIGHLIGHTS OBJECTS AND 20TH CENTURY DESIGN

In 2012 A+O presented three dedicated catalogues featuring collectable 20th century design, New Zealand ceramics and superior private collections the most notable of which were the Tim and Natasha English Collection, The estate of legendary New Zealand ceramicist Len Castle and the Karakter collection of British and Continental design. Total sales of over \$700 000 were testimony to the ongoing and growing collector commitment to and passion for handmade applied art and limited edition modern design.



Ludwig Mies van der Rohe
Barcelona daybed
\$5275



Theo Schoon
Carved pounamu pendant
\$5745



Len Castle
Lava lake Bowl
d.470mm
\$5393



A Pair of French prototype arm
chairs
\$5860



Ernest Shufflebotham for
Crown Lynn rare handpainted
ovoid vase
\$2345



Len Castle
Sulphurous Bowl
d.415mm
\$8793



Len Castle
An early salt glaze vase,
circa 1952
\$6565



Len Castle
Inverted Volcano moulded vase
l.845mm
\$9614



the art issue

INSIDE ARTISTS' HOMES AND STUDIOS

FRANCIS UPRITCHARD | ANTHONY GOICOLEA
 FIONA PARDINGTON | TONY DE LA TOUR | EMILY WOLFE
 MARTINO GAMPER | RUTH CASTLE | ROHAN WEALLEANS
 DICK FRIZZELL | WILLIAM SUTTON | AND MUCH MORE

ON NEWSSTANDS NOW





Two 19th century rhino horn cups
\$9380 & \$9965



A pale celadon jade carving
depicting two immortal boys
\$12 310



Chinese large Hotan
(Hetian) see material
green jade carving
\$12 895



Chinese pale celadon
and russet Hotan
(Hetian) jade pendant of
a recumbent buffalo
\$7620



A group of three pale celadon
jade animal pendants
\$18 760

2012 HIGHLIGHTS ASIAN AND DECORATIVE ARTS

2012 was a watershed year for the presentation of Asian decorative arts in New Zealand. In February A+O offered its first ever dedicated Asian art catalogue which featured the exceptional provenance, quality and history of the Leo Tattersfield collection of Chinese jade. By years end A+O had offered two dedicated Asian art catalogue and sold over \$650 000 Asian and Decorative arts, attracting buyers from all over the world with live internet bidding.



Two russet jade animal carvings
of a tiger and a small dog
\$18 760



A rare sandstone figure of
Uma, Khmer Baphuon style
11-12th century
\$11 725



A matched pair of early
20th century Chinese famille
rose bottle vases
\$23 450



19th century Chinese
carved ivory figure of the
Bodhisattva Guanyin
\$9675



Queen Anne period walnut
chest on stand
\$11 725

SELLING THE DREAM

The Art of Early New Zealand Tourism



A critically acclaimed book bringing overdue recognition to the significance of early graphic art

To see such a beautiful and painstaking catalogue is quite literally breathtaking ... I'm amazed we even had artists and designers of this calibre!

Dick Frizzell, Artist

It is in the art of the poster that artists use their imagination and invention to unashamedly celebrate and reveal the uniqueness of the New Zealand scene.

Hamish Keith, Cultural Historian

This book is as much about art as it is about New Zealand's promotion of visual identity.

Ron Brownson, Auckland Art Gallery

Imagine an alternative art history where the painters we celebrated weren't Rita Angus, Toss Woollaston and Colin McCahon, but names such as Leonard Mitchell, Marcus King and Howard Mallitte.

Guy Somerset, The Listener

Will there ever be a better book than this one on New Zealand's unsung commercial designers? It's hard to imagine looking at what a terrific job has been done here.

Jim & Mary Barr, Over the Net arts blog

A more generous consideration of the history of New Zealand art would acknowledge that commercial and fine art have always shared much in common.

Warren Feeney, Academy of Fine Arts

The essential sourcebook ... an inspiring example of private scholarship and research into the NZ arts.

Antony Ellis, New Zealand Art Print News

You've sold me this particular dream alright. Ka kite ano Toss, Colin and Ralph; kia ora Marcus King and Leonard Mitchell! This book is one fantastic contribution to New Zealand art history.

Mark Stocker, Associate Professor

Buy from **www.sellingthedream.co.nz** to receive a 10% discount and free domestic postage (RRP\$79.95).



ASIAN ART AND FINE DECORATIVE ARTS

JUNE 2013

This sale will include the collection of well-known author Pat Booth as well as The Ann Matheson collection of Japanese art together with a superb offering of Chinese snuff bottles and Chinese antiques. Also included in this sale will be further items from the David Cook collection of decorative arts

Further entries invited

Contact:

James Parkinson
James@artandobject.co.nz
 09 354 4646
 021 222 8184

Giulia Rodighiero
 Asian Art Specialist
Giulia@artandobject.co.nz
 09 354 4646

Image:

A fine 19th century Chinese jade pieced and carved snuff bottle. H.95mm
 \$1500 – \$2000



NZ AND INTERNATIONAL STUDIO POTTERY AND MODERN DESIGN

JUNE 2013

2012 saw a marked upturn in collector interest in New Zealand applied arts from the post WWII period. A number of superb and rare to market lots have already been consigned to what is anticipated to be a landmark catalogue in June.

This sale will feature a collection of Hamada Shoji pottery from the collection of the New Zealand potter John Patrick together with fine examples from Shimaoka Tatsuzo, Michael Cardew and other international potters. The New Zealand pottery section features superb pieces from Len Castle, Mirek Smisek, John Parker, Rick Rudd, Barry Brickell and Harry and May Davis. The modern design sale will feature NZ and international mid-century pieces together with industrial design furniture.

Further entries are invited

Contact:

James Parkinson
James@artandobject.co.nz
 09 354 4646
 021 222 8184

Image:

Hamada Shoji
 Bowl with Kaki glaze and wax resist brushwork. D.330mm
 Provenance: John Patrick collection
 Exhibited during Hamada's visit to New Zealand
 \$3000 – \$5000

RARE BOOKS
WEDNESDAY 20TH MARCH
AT 1PM

A selection from over 150 W.E. Johns Biggles, Steely and Worrals adventure novels including many first editions and most with original dustjackets.

A+O's first Rare Book catalogue of 2013 includes a collection of rare illustrated Materia Medica which includes The Herbal or General History of Plants by John Gerard from 1636 and Botolonogia by William Salmon from 1710. The collection also includes Culpeper's Physical and Chemical Way of Curing the most Difficult and Incurable Diseases of 1656. The New Zealand section of the catalogue will feature several early Auckland Land Deeds dating to the early 1840s and fine illustrated volumes.

Entries invited until March 1st

Contact:

Pam Plumbly
pam@artandobject.co.nz
09 354 4646

Biggles

FOLLOWS ON

CAPTAIN W.E. JOHNS



Biggles'

CHINESE PUZZLE
CAPTAIN W.E. JOHNS



STEELEY

FLIES AGAIN





The Collection of the Late Nicholas Browne: May 14th

ART+OBJECT announces the collection of the late Nicholas Browne. A carefully considered, directional and idiosyncratic collection principally compiled in the 1990s, Browne possessed a wonderful eye for contemporary art informed by close relationships with artists, dealers and fellow collectors. The collection consists of around 60 lots by key contemporary New Zealand artists, many of whom Browne collected in depth, including: Andrew McLeod, Julian Dashper, Bill Hammond, Peter Robinson, Giovanni Intra, Séraphine Pick, Richard Killeen, Ralph Hotere and many more.

Andrew McLeod

Economy
oil on canvas
signed with artist's initials
A. McC and dated 1999
635 x 425mm
\$5000 - \$8000

For further information please contact:

Ben Plumbly
Director of Art
DDI: (09) 306 6191
Cell: 021 222 8183
ben@artandobject.co.nz



Modern Design and Decorative Arts

Thursday 7 March at 6.30pm

3 Abbey Street, Newton, Auckland

VIEWING

Friday 1 March 9.00am – 5.00pm

Saturday 2 March 11.00am – 4.00pm

Sunday 3 March 11.00am – 4.00pm

Monday 4 March 9.00am – 5.00pm

Tuesday 5 March 9.00am – 1.00pm

Wednesday 6 March 9.00am – 1.00pm

Thursday 7 March 9.00am – 1.00pm



Lot 629

Paul Kafka mid-century
marquetry sideboard.

Murray Crane Collection of Taxidermy

- 570. Chamois horns
inscribed *Shot St Arnaud Range 1959*
L.160mm x H.180mm
\$200 – \$400
- 571. Chamois horns
inscribed *Shot Landsborough. 9th April 1965*
155 x 190mm
\$200 – \$400
- 572. Chamois horns and skull
210 x 230mm
\$200 – \$400
- 573. Hare skull
L.100mm
\$50 – \$100
- 574. Wallaby skull
L.120mm
\$75 – \$125
- 575. Tahr horns
inscribed *Shot Murchison 1963*
250 x 120mm
\$200 – \$400
- 576. Ram's horns
L.190mm x w.450mm
\$300 – \$500
- 577. Red Hartebeest horns
290 x 250mm
\$300 – \$500
- 578. Thomson's Gazelle horns
370 x 250mm
\$300 – \$500
- 579. Bushbuck or Eland horns
500 x 260mm
\$300 – \$500
- 580. Impala horns
370 x 220mm
\$250 – \$400
- 581. Lechwe Antelope horns
250 x 260mm
\$250 – \$400
- 582. Waterbuck horns
290 x 230mm
\$200 – \$400
- 583. A fine set of Waterbuck horns
570 x 350mm (illustrated front cover)
\$300 – \$500
- 584. A fine set of Kudu horns
900 x 380mm
\$400 – \$800
- 585. Taxidermy Chamois head
590 x 370mm
\$400 – \$600
- 586. Taxidermy Impala Head
720 x 480mm
\$500 – \$800

- 587. Goat's horns
Trophy House, Lower Hutt label affixed rear
H.300 x W.480mm
\$200 – \$400
- 588. Medium Goat's horns
Trophy House, Lower Hutt label affixed rear
H.390 x W.550mm
\$300 – \$500
- 589. Large Goat's horns
Trophy House, Lower Hutt label affixed rear
H.440 x W.610mm
\$350 – \$550
- 590. Bush Buck horns
inscribed *Bush Buck Zululand* on brass plaque
and dated 1907 on verso
L.360 x H.240mm
\$300 – \$500
- 591. Springbok horns
280 x 170mm
\$200 – \$400
- 592. 6 point taxidermy Stag's head
L.700 x H.350mm
\$600 – \$800
- 593. 6 point taxidermy Stag's head
inscribed *Waikato 1901* on brass plaque
L.730 x H.330mm
\$600 – \$800
- 594. 13 point taxidermy Stag's head
L.1400 x H.750mm (illustrated rear cover)
\$1000 – \$1500
- 595. Taxidermy Fox head
200 x 210mm
\$500 – \$800
- 596. Taxidermy Leopard's head
370 x 170mm
\$600 – \$900
- 597. Taxidermy Little Spotted Kiwi – Apteryx Owenii
L.340mm
\$3000 – \$5000



598

Further Taxidermy

- 598. A large glass fronted display case containing a fancy presentation of taxidermy American birds. Species include Barn owl, woodpeckers, California Quail, Bluejay, crows, ducks and a variety of hummingbirds – approx. 70 individual birds. Brass plaque inscribed *Presented by W. J. Potter Esq 1918*. Case dimensions 2000 x 2010mm
\$5000 – \$8000
- 599. Taxidermy rodeo bull's hoof in the form of a cup or pen holder
H. 210mm
\$300 – \$500
- 600. Taxidermy deer fawn seated on a log section
L.770mm
\$200 – \$400
- 601. Taxidermy Canada Goose in flight
950 x 1620mm
\$600 – \$800
- 602. Taxidermy Hawksbill turtle
Circa 1945 (this taxidermy item was transported to New Zealand by a returned serviceman from the Orient after WWII)
L.610mm
\$1000 – \$1500
- 603. Taxidermy North American Bison's head
L.770mm
\$1500 – \$2500



597



606

Modern Design

604. Gregor Nicholas
A Red/blue chair after Gerrit Rietveld. Painted
solid beech wood and plywood construction
\$600 – \$1200
605. Gregor Nicholas
Schroeder table after Gerrit Rietveld. Plywood
construction painted blue, white, red and black.
Signed and dated 1981 to the base.
W.500 x H.600mm
\$450 – \$600
606. Hans Wegner for Getama
Oak coffee table raised on cylindrical legs.
Impressed stamp to underside of the table.
750 x 750mm
\$800 – \$1200
607. Svegard's Markaryd
Swedish extending teak dining table and set
of six chairs matching chairs. 1500 x 2500 x
900mm
\$2500 – \$3500
608. Set of six Danish mid-century dining chairs
comprising two carvers and four side chairs
with ladder backs and with black vinyl seats
raised on square section legs, the carvers with
sculptured arms.
\$600 – \$1000
609. Nils Johnson
Teak extending dining table raised on tapering
cylindrical legs.
\$800 – \$1200
610. Gordon Russell
Extending dining table with rectangular top
raised on a sculptural trestle base with four
splayed legs.
\$2000 – \$3000
611. Arne Vodder for France and Sons
Teak framed deep blue leather upholstered
reclining armchair with sculptural arms raised
on cylindrical tapering legs.
\$1600 – \$2400
612. Nordiska mahogany and walnut cabinet with
inlaid decoration to the doors and side panels
opening to reveal a beautifully fitted interior
with shelves and three drawers with walnut
fascias, the base section with two sliding trays
raised on splayed tapering legs.
H. 1300 x W. 890mm
\$1800 – \$2600



608



611



612



612

613. Danish mid-century Dyrlyund teak twin pedestal desk, three drawers to each pedestal with book shelf to rear. L.1600 x D.740 x H.720mm
\$2200 – \$2800
614. Finn Juhl
Teak and leather desk chair, stamped with makers mark to underside of seat rail.
\$800 – \$1200
615. Reason-Ardale 1960's swivel arm chair with buttoned leather seat and back, padded arms, aluminium frame on a five point base terminating in castors.
\$800 – \$1400
616. Kai Kristiansen
Set of six dining chairs with chocolate brown upholstery.
\$1600 – \$2000
617. Hyllinge Mobler bent plywood magazine rack.
\$200 – \$300
618. Holmegaard amber tinted Gul vase. H. 300mm
\$200 – \$400
619. Peter Hvidt for France and Son
Two tiered corner table, the lower tier with inlaid woven cane top raised on tapering legs. W.720mm
\$1000 – \$1500
620. German 1960's Palisander rosewood cabinet, the four doors with beautifully figured timber opening to reveal shelves to the interior set on a brushed steel base. L.2600mm H.1730mm
\$1500 – \$2500
621. Gordon Russell
Mid-century stool with overstuffed seat with textured green upholstery.
\$200 – \$400
622. Toften Danish nest of three tables in teak, the largest 550 x 400mm
\$300 – \$500
623. Poul Henningsen for Louis Poulsen
Vintage PH 5 hanging light in white.
\$800 – \$1200
624. Hadrill & Horstmann Simplus anglepoise lamp. Rewired.
\$350 – \$500
625. Gaetano Sciolari
Brass and chromium plated nine light chandelier. Rewired. H.500 x W.520mm
\$1800 – \$2400
626. Sigvard Bernadotte for France and Daverkosen, Denmark
Rare mahogany two seater sofa and matching armchair designed by Count Sigvard Bernadotte in 1954.

Count Sigvard Bernadotte was a Swedish prince who lost his royal title in 1934 when he married a commoner. He was a renowned industrial designer making both furniture and luxury objects for Georg Jensen. Furniture designed by Bernadotte is rarely offered on the open market. For a similar example see
- http://kirkmodern.blogspot.co.nz/2011/03/two-nice.html
\$6000 – \$8000
627. Ole Wanscher for France and Daverkosen, Denmark
Danish early 1950's rocking chair, teak framed with original dark green vinyl. Impressed mark to underside of the seat.
\$1200 – \$1500
628. Aldo Turo, Milano, Italy
Rare and beautiful twin pedestal dining table in lacquered goat skin. The rectangular top supported by two oval shaped pedestals. Original makers label on each pedestal. Circa 1970. L.2000 x W.1000mm
\$1000 – \$2000
629. Paul Kafka
An impressive mid-century marquetry sideboard in pear wood and fiddle back maple. The sliding cupboard doors inlaid with a design of swimming fish flanked by four drawer raised on a sculptured stretcher base on tapering legs. L.2730mm

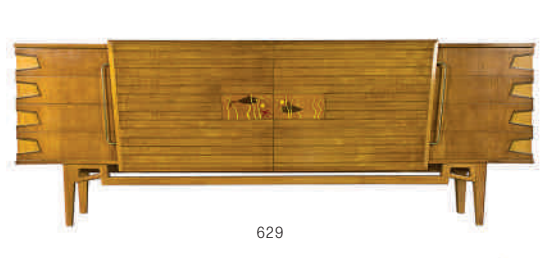
Paul Ernst Kafka (1907 – 1972) was one of the most significant furniture designers and makers of the post WW II period in Sydney. Born and trained in Austria at the Vienna University of Applied Arts Kafka and his wife emigrated to Australia in 1939. By the late 1940s Paul Kafka Exclusive Furniture Pty Ltd employed over 20 tradesmen producing bespoke and custom designed and built furniture for mainly Eastern suburbs clients. In the 1960s he undertook a number of major fitout projects for the Sheraton, Chevron and Travelodge Hotels. His signature is complex inlaid wood marquetry frequently in modernist and Art Deco influenced geometric patterns. Many of his most notable designs were created working in tandem with leading Australian postwar architects including Harry Seidler (with whom he shared Viennese origins), Hugo Stossel, Hugh Buhrich and Harry Epstein. It is Kafka's built in and free standing furniture that is a feature of in what is recognised as Australia's foundation modernist home the 'Rose Seidler' house in northern Sydney. Examples of Kafka furniture and design drawings are held in the collection of the Powerhouse Museum, Sydney.
\$10 000 – \$15 000
630. Le Corbusier style chrome and leather three piece lounge suite.
\$600 – \$1200
631. Pair of Formway Pli chairs, each with white laminate plywood shell on a burnished stainless steel frame.
\$400 – \$800
632. Magnus Oleson
Pair Danish laminated Beech office chairs.
\$200 – \$400
633. Daniel Steenstra for Crown Lynn
Bottle vase with experimental iridescent green and copper lustre glaze. Crown Lynn factory marks to the base. H.290mm
\$1000 – \$1500
634. Ernest Shufflebotham for Crown Lynn
Hand potted dish with matt white glaze, shape 54. D.250mm
\$200 – \$400
635. Frank Carpay for Crown Lynn
Handwerk coffee mug painted with an abstract design in black and aubergine.
\$200 – \$400
636. Crown Lynn commemorative plate. 25th Anniversary of Crown Lynn potteries in New Zealand, decorated with NZ motifs. L.280mm
\$100 – \$200
637. Frank Carpay for Crown Lynn
Handwerk bowl with a stylised design in green and aubergine [faulted]. D. 220mm
\$50 – \$100
638. Crown Lynn swan together with a Temuka pottery vase, two Crown Lynn trough vases and a small vase (5 items)
\$100 – \$200
639. Ti Toki bottle modelled as a tekoteko figure, Lincoln wines pottery flask decorated with a tekoteko figure and a manaia together with a green glazed tekoteko figure (3 items)
\$100 – \$200
640. Len Castle
Earth book, white earthenware with black staining. Impressed initials. H.110 x W.130mm
\$400 – \$600
641. Len Castle
Fossil form bottle, white earthenware with textured surface. L.140mm
\$200 – \$300
642. Len Castle
Stoneware lipped bowl, early shino glaze. Circa 1972. D.180mm
\$250 – \$350
643. Len Castle
Stoneware bowl with shino glaze and crackle glaze interior. Warkworth firing. Circa 2005. D.180mm
\$200 – \$300
644. Len Castle
Four stoneware spice jars with cork stoppers.
\$100 – \$200
645. Len Castle
Two stoneware beer mugs with saturated iron underglaze and rutile overglaze. Commissioned from Len Castle, each mug holding one bottle of beer. Impressed initials. [One faulted].
\$50 – \$100
646. Len Castle
Stoneware bowl with talc crackle glaze to the well with stipple detailing, the exterior glazed in tenmoku. D.280mm
\$300 – \$500
647. Len Castle
Stoneware bowl with dark green glaze over tenmoku. Impressed initials. D.340mm
\$300 – \$500



613



685



629



683



633



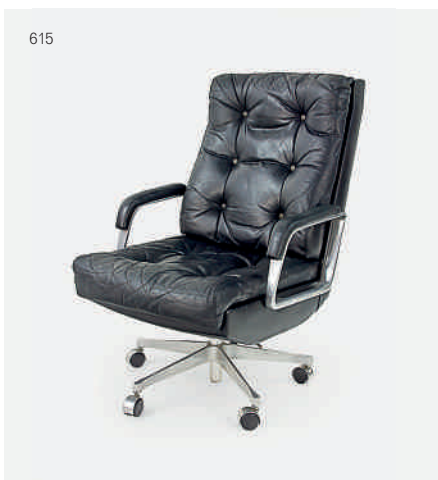
626



640

641

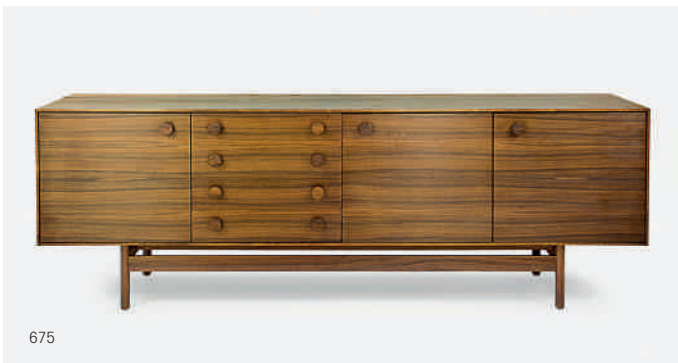
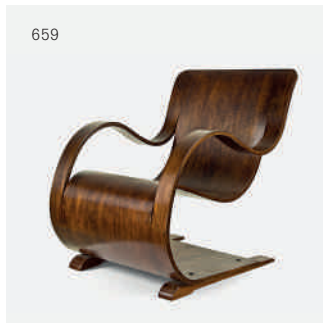
649



615



650





680



619



682

648. Len Castle
Large stoneware bowl with blue glaze to the well. Firing flaw evident to the top rim. D.390mm
\$100 – \$200
649. Len Castle
An early dish with blue abstract slip decoration on a pale blue ground. Impressed initials. D.100mm
Provenance: Castle family collection
\$200 – \$400
650. Len Castle
Crater lake bowl in matt grey stained earthenware with turquoise alkaline glazed well and sculptured cavetto. Impressed initials. D.420mm
\$2500 – \$3500
651. NZ made 1950's teak framed armchair.
\$150 – \$250
652. NZ made lip chair in black vinyl.
\$100 – \$200
653. 1950's teak table lamp with floral shade.
\$50 – \$100
654. Grant Featherstone
Contour armchair, model B210 television chair. Body of moulded ply upholstered in textured cotton upholstery raised on four splayed legs. Manufactured circa 1951.
\$3000 – \$4000
655. Grant Featherstone
Contour armchair, model B210 television chair. Body of moulded ply upholstered in textured cotton upholstery raised on four splayed legs. Manufactured circa 1951.
\$3000 – \$4000
656. Grant Featherstone
Dining suite with four contour chairs in original white vinyl covering and a double extension Formica dining table.
\$2000 – \$3000
657. Bob Roukema for Jon Jansen
1950s lounge chair raised on tapering splayed legs. Distressed condition requiring restoration.
Provenance: Purchased from the Jon Jansen store in Queens Arcade and held in the same collection for the last fifty years.
\$500 – \$1000
658. Bob Roukema for Jon Jansen
1950s lounge chair raised on tapering splayed legs. Distressed condition requiring restoration.
Provenance: Purchased from the Jon Jansen store in Queens Arcade and held in the same collection for the last fifty years.
\$500 – \$1000
659. Garth Chester
Bent plywood Curvesse chair.
\$2500 – \$4500
660. Garth Chester
1950's dining table with triangular Formica top raised on a bent tubular steel base complete with three matching Bikini chairs. One chair with inscription to the underside of the seat in pencil. *Designed and sold by Garth Chester LTD. 32 France Street Auckland. Phone 41258*
\$1500 – \$2500
661. Pair of 1950's Bikini chairs with bent blackened tubular steel frames, each with original vinyl covering. Both inscribed in pencil to the underside of the seat. *Designed and sold by Garth Chester LTD. 32 France Street Auckland.*
\$500 – \$1000
662. Jon Jansen (attributed)
New Zealand 1950's lounge chair with matching ottoman and loose cushion. The chair and ottoman raised on splayed legs. Later recovered in a multi coloured stripped cotton upholstery.
\$1200 – \$1800
663. Pair of rare New Zealand made Vintage 1950's wing back lounge chairs, each raised on a cruciform base on tapering legs. Possibly designed by Bob Roukema
\$2400 – \$2800
664. Rare New Zealand made 1960's Don Furniture three piece lounge suite, mahogany and Kauri construction. Fully restored and upholstered in lime green. Makers label to underside.
\$3000 – \$4000
665. A pair of NZ made 1950's contour style chairs, blonde oak arms and legs with original pale green vinyl upholstery. Unknown NZ maker but possibly designed by Bob Roukema.
\$1000 – \$1500
666. Rare and unusual 1960's mahogany NZ made floor lamp. Naturalistically rendered sinuous foliate form with later George Nelson Shade.
\$1200 – \$1800
667. Pair of vintage Danske Mobler lip chairs with blackened tubular steel framing and recovered in a red vinyl
\$700 – \$1000
668. Oak 1950's coffee table with glass top raised on splayed legs. W.710mm
\$200 – \$400
669. John Crichton circular dish decorated with a radiating mosaic pattern in brown, ecru and apricot tiles. D. 280mm
\$100 – \$200
670. John Crichton design table lamp with ebonised cylindrical base and raffia shade. Original John Crichton studio label affixed to the base.
\$200 – \$400
671. John Crichton (attributed)
1950's standard lamp in blackened tubular steel with telescopic mechanism.
\$400 – \$600
672. Bruno Mathsson for Dux
Pair of Jetson chairs in tan leather upholstery complete with original head rests raised from a circular chromium plated base.
\$3000 – \$4000

686



688



690



695



696



698



724



691



678



677



673. Pair of Danish late 1950s ash armchairs.
\$1200 – \$1800
674. Clausen and Son
Danish Brazilian rosewood sideboard with four recessed drawers with countersunk handles flanked by sliding cupboards raised on tapering legs. L.2080mm
\$3000 – \$4000
675. Kofod Larsen
A good Danish sideboard in Brazilian rosewood with four drawers flanked by cupboards with circular disc handles raised on a stretcher base on cylindrical legs. W.2300mm
Kofod Larsen is regarded as one of the best furniture designers of his era. This sideboard constructed in 1963 from high quality Brazilian rosewood exhibits fine craftsmanship and finishing details.
\$5000 – \$10 000
676. Borge Mogenson (attributed)
Set of six dining chairs with woven seagrass seats.
\$1200 – \$1600
677. Mid-century teak and Afromosia wood filing cabinet with tambour door and brass escutcheons. H.940mm
\$1000 – \$1500
678. G Plan "Fresco" teak desk with floating form top above a single frieze drawer above four drawers raised on tapering legs. W.1500mm
\$1400 – \$1800
679. Richard Hornby
Teak two-tier coffee table. L.1200mm
\$300 – \$600
- 679a. Richard Hornby
Sideboard in teak with four drawers and cupboards, the drawers with reeded fascias raised on tapering legs. W. 1905 x D. 485 x H. 800mm
\$1200 – \$2000
- 679b. Arne Vodder for Sibast
Teak framed rocking chair. Original label affixed to underside of the front rail. Newly re-upholstered
\$800 – \$1200
- 679c. Peter Hvidt
Ax coffee table in walnut of rectangular form raised on tapering legs. L.1600 x W.800mm
\$1500 – \$2000
680. 1960's Lurashell Egg chair raised on a four point aluminium base upholstered in original striped green fabric.
\$1000 – \$1500
681. Herbert Terry
Cream angleposie lamp. Model 1227. [Rewired].
\$300 – \$500
682. Lurashell Egg chair raised on a four point aluminium base upholstered in red cotton cloth.
\$900 – \$1200
683. Cari Zalloni
Green ceramic table lamp.
\$300 – \$500
684. Hadrill and Horstmann white anglepoise lamp.
\$300 – \$500
685. Poul Henningsen for Louis Poulsen
Vintage PH 5 hanging light in red.
\$1000 – \$1500
686. 1970's Danish Thams Kvalitet Vintage two seater sofa upholstered in chocolate brown leather.
\$1000 – \$1500
687. 1970's Danish Thams Kvalitet leather armchair upholstered in chocolate brown leather.
\$600 – \$1200
688. Gordon Russell
Desk chair with laminate wood shell with padded back and arms raised on a five point burnished aluminium base. Upholstered in cream leather.
\$1200 – \$1800
689. Timo Sarpaneva
Pair of eight ring candlesticks. H.300mm
\$250 – \$350
690. 1960s Vintage Danish club sofa upholstered in original green leather. W.1900mm
\$2200 – \$3000
691. Nils Thorsson for Royal Copenhagen
Fajance vase painted with floral and abstract designs. H. 190mm
\$200 – \$300
692. Vintage 1960's rocket lamp. H.1140mm
\$200 – \$300
693. Arne Jacobson for Fritz Hansen
Series 7 chair with black laminate frame, showing wear.
\$100 – \$200
694. Child's black vinyl egg chair raised on a four point base.
\$150 - \$300
695. Modus chair in rosewood with black leather upholstery with padded seat, back and arms.
\$1000 – \$1400
696. A pair of Modus chairs in rosewood with black leather upholstery, showing wear.
\$1200 – \$1800
697. 1960's Ercol armchair with cream vinyl upholstery.
\$250 – \$500
698. Hans Olsen for Frem Rojle
Dining table in teak with four interlocking chairs with black vinyl seats. The table with integral leaf.
\$1800 – \$2600
699. Cado extending dining table in walnut raised on a sculptural trestle form base. 1750 x 2750mm
\$500 – \$800
700. Mies van der Rohe for Knoll
Pair of BRNO chairs bent tubular chrome frames with black leather seat and back.
\$1400 – \$2000
701. Mies van der Rohe for Knoll
Pair of BRNO chairs bent tubular chrome frames with black leather seat and back.
\$1400 – 2000
702. Robert Heritage for Archie Shine, 1957 design
Hamilton teak sideboard with four drawers with reeded fascias beside cupboards, raised on tapering cylindrical legs. 2300 x 510mm
\$3250 – \$3750
703. Elliotts of Newbury set of four dining chairs with black vinyl seats.
\$400 – \$800
704. Borge Johansen
Pair of Venus television chairs with white spun aluminium bases and black upholstery.
\$500 – \$800
705. Vico Magistretti for Fritz Hansen
Set of four bent plywood chairs with anodised aluminium frames.
\$500 – \$800
706. Lyfa pendant light.
\$100 – \$300
707. Gandolfi for London
Industrial field camera tripod.
\$200 – \$400
- 707A. Large Ege Rya wool floor rug
\$800 – \$1200
708. Soro Stolefabrik ebonised rocking chair with woven seagrass seat
\$400 – \$800
709. Picquot ware teaset comprising teapot, hot water jug, milk jug, sugar basin complete with laminate top tray.
\$200 – \$400
710. French Industrial Chair with plywood seat and back swivelling to adjustable height, traces of original green paint remain.
\$350 – \$500
711. Borge Mogenson
Six Asserbo dining chairs in Oregon pine. The set comprising two carvers and side chairs. Each chair stamped to the underside of the front rail.
\$1000 – \$2000
712. Robert Heritage
Teak extending dining table, raised on cylindrical legs. L. 1450mm extending to 1960mm, W. 855 x H. 720mm
\$800 – \$1200
713. Bent tubular chrome framed armchair with chocolate brown leather upholstery
\$500 – \$800
714. Isamu Noguchi style coffee table with free form glass top raised on a sculptural base. L.900mm
\$300 – \$500

715. Teak G-Plan extending dining table raised on tapering cylindrical legs with folding central extension. L. 1220mm extending to 1700mm, W.1220 x H. 730mm
\$800 – \$1200
716. Pair of Danish 1960s armchairs with black vinyl upholstery, with exposed finger joint detailing raised on square sectioned legs.
\$600 – \$1200
717. no lot
718. Yngve Ekstrom
Set of four Kontiki chairs in teak, with black vinyl upholstery.
\$800 – \$1200
719. Finn Juhl
Diplomat armchair framed in teak with green cloth upholstery. *Finn Juhl* makers label affixed to the underside of the seat.
\$600 – \$1200
720. West German 1960's Scheurich floor vase with geometric decoration, cobalt blue glaze.
H. 410mm
\$100 – \$250
721. Pair of ceramic mid-century slip cast models of cockerels.
\$160 – \$200
722. Richard Zawtiz
1980's red tangle sculpture.
\$180 – \$240
723. Gote Mobler Nassjo
Pair of Swedish armchairs with laminated European birch frames and brown leather upholstery.
\$1400 – \$2000
724. George Mulhauser for Plycraft
'Mr Chair' Lounge chair and matching ottoman with laminate walnut frame with swivel and reclining mechanism raised on a four point base.
\$1800 – \$2600
725. American mid-century three seater couch upholstered in green velour. W.2300mm
\$700 – \$1200
726. American 1960s standard lamp with three adjustable ribbed metal arms holding three spun aluminium shades with two phase mechanism.
\$300 – \$500
727. American 1960's table lamp with three tubular metal supports holding three gold anodised aluminium adjustable shades.
\$300 – \$500
728. American 1960's table lamp with two brass ribbed metal adjustable arms holding spun aluminium shades with teak finials.
\$250 – \$400
729. 1970's American Standard lamp on painted metal stand holding three adjustable lights.
\$100 – \$200
730. Pair of American mid-century armchairs raised on four point bases with black vinyl upholstery and nail head trim.
\$1400 – \$1800
731. Pair of American 1960's candle sticks together with a pair of vases in turquoise and gold.
\$90 – \$140
732. 1970's chrome wall light
\$80 – \$120
733. Retro swag light with brass stem supporting a glass orb and with pleated shade. L.530mm
\$200 – \$400
734. Lightolier 1970's glass rod chandelier.
\$900 – \$1200
735. Ceramic mid-century wall light.
\$90 – \$140
736. Pair of 1970s pendant lights.
\$150 – \$200
737. Burt Wasserman
Untitled abstract silk screen print, Signed and dated 1972 verso. 1020 x 1020mm
\$400 – \$600
738. Vintage Japanese robot with visible gear mechanism in original box.
\$100 – \$200
739. 1950's clapping monkey toy.
\$150 – \$250
740. Hand blown Vassart mottled glass vase.
Signed to the base. H.180mm
\$30 – \$50
741. Hot glass company paper weight together with another glass paperweight.
\$30 – \$50
742. 1960's Swedish Lindsahmmer orange tinted glass vase by G Anders. Signed to the base
H.190mm
\$40 – \$80
743. Three 1960's Swedish Ekenis studio glass vases. (3 items)
\$50 – \$150
- 743a. Otto Brauer for Holmegaard
Gul vase. Oversized in cobalt blue with original label to the shoulder. H.495mm
\$500 – \$1000
- 743b. Otto Brauer for Holmegaard
Gul vase. Oversized in green. H.495mm
\$700 – \$1000
744. Two German art glass orb vases together with a murano glass ashtray. (3 items)
\$30 – \$50
745. Arabia 1960's black glazed teapot
\$80 – \$140
746. Austrian Rene Rosenthal bronze bust of an African woman. Signed with initials to the base.
H.160mm
\$250 – \$350
747. Murano spatter glass dish in iridescent copper, yellow and white. W.280mm
\$100 – \$200
748. Ruth Castle
Bowl form. Dyed rattan core with fibre binding together with another small fibre basket on a rattan base. (2 items)
\$150 – \$250
749. Ruth Castle
'Check' dish. Fine rattan core, dyed with Condys crystals on a wire circle. D.440mm
\$150 – \$250
750. Ruth Castle
'Sunflower' dish. Fine rattan core, dyed with Condys crystals on a wire circle. D.460mm
\$150 – \$250
751. Ruth Castle
Onion basket. Fine rattan core and Palembang dyed with Condys crystals, made using a fish basket technique. L.420mm
\$100 – \$200
752. Ruth Castle
Two small baskets. 'Star of David' and 'Check' fine rattan core, dyed with Condys crystals on a wire circle. Each 230mm
\$80 – \$120
753. Ruth Castle
Fruit dish. Fine rattan core dyed with Condys crystals, made using a fish basket technique. D.360mm Offered together with two Thai woven Jack fruit. (3 items)
\$80 – \$120
754. Barry Brickell
Stoneware bowl with pouring lip, blue glazed exterior and impressed decoration to the inside rim. Cypher mark to the base. D.300mm
\$200 – \$300
755. Barry Brickell
Stoneware bowl decorated with a repeating cruciform design to the inside rim and with blue glazed exterior. D.300mm
\$200 – \$300
756. Len Castle
Crater Lake bowl in matt grey stained earthenware with turquoise alkaline glazed well and sculptured cavetto. Impressed initials. D.490mm
Provenance: Len Castle family collection.
\$1500 – \$3000
757. Len Castle
Stoneware bowl with tenmoku glaze, wax resist design to the well, small rim frit evident. Impressed initials to the base. D.150mm
\$100 – \$200
758. Len Castle
Stoneware bowl with grey/green semi-matt talc glaze. D.270mm
\$250 – \$400
759. Len Castle
Stoneware dish with shino glaze and combed decoration to the well. Impressed initials. D.300mm

An almost identical example illustrated in *Len Castle: Making the molecules dance. P.202.*
\$300 – \$400

760. Len Castle
Stoneware bowl with shino-type glaze.
Impressed initials to the base. D.300mm
\$500 – \$800
761. Len Castle
Large and impressive earthenware bowl with
alkaline blue copper glaze. Impressed initials.
L.600mm
\$2000 – \$3000
762. Len Castle
Stoneware bottle with applied strap handle
and shino- type glaze and with original shino
glazed stopper. Impressed initials to the base.
H.320mm
\$600 – \$900
763. Len Castle
Rectangular stoneware dish with impressed
decoration to the well, ash glazed with
tenmoku to the rim. Impressed initials to the
base. L.380mm
\$500 – \$800
764. Len Castle
Large stoneware bowl with shino-type glaze.
Impressed initials to the base. D.400mm
\$500 – \$800
765. Len Castle hanging form with texture ochre
surface. Impressed initials. W.280mm
\$350 – \$500
766. Len Castle
Stoneware bowl with pitted textured green
glazed surface. Circa 1990. Impressed initials
to the base. D.350mm
\$500 – \$800
767. Len Castle
Large stoneware jug with strap handle and iron
ash glaze. Impressed initials. H.260mm
\$400 – \$600
768. Ray Rogers
Massive raku fired spherical vase with sawdust
colourings. D.560mm
\$800 – \$1200
769. Ray Rogers
Large flattened discoid form vase with fungoid
form aperture, raku fired with sawdust
colourings. D.560mm
\$500 – \$800
770. Bill Marshall
Tenmoku glazed teapot with cane handle
together with a chawan (tea bowl). The teapot
with professional restoration to the spout, the
chawan faulted. Cypher mark to the base of
the teapot.
*Provenance: These pieces were purchased by
Len Castle at St Ives in England.*
\$100 – \$200
771. Len Castle
Stoneware bowl with jun- type crackle glaze to
the interior. The exterior with a rich black glaze.
D.320mm
\$200 – \$400



756



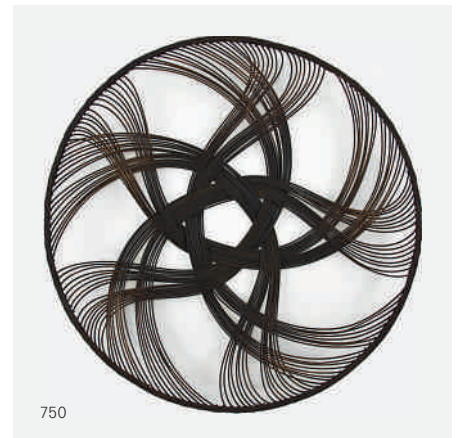
774



757



766



750



762



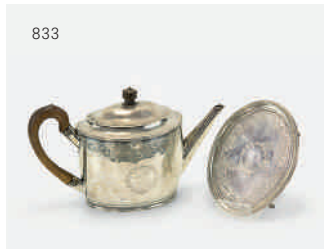
761

772. Doreen Blumhardt
Large lidded stoneware floor vase with poured glaze decoration in blue and brown on an oatmeal ground. Impressed mark. H.510mm
\$500 – \$1000
773. Len Castle
Stoneware dish. The interior with a blue hare-fur glaze with tenmoku glaze to the exterior. Impressed initials. 370 x 300mm
\$500 – \$800
774. Len Castle
Impressive bird headed bowl. Earthenware with deep blue alkaline glaze to the interior. Impressed initials to the base.
D.400mm
\$3000 – \$4000
775. Len Castle
Stoneware dish of shallow rectangular shape with oatmeal glaze with iron spotting. Impressed initials L.310mm
Provenance: Castle family collection
\$300 – \$400
776. Len Castle
Stoneware dish of rectangular form, iron ash glaze with stippled pattern to the well. D.310mm
Provenance: Castle family collection
\$300 – \$400
777. Len Castle
Stoneware bowl with flared rim with stippled decoration to the well. Dark brown and green ash glaze. Impressed initials to the base. D.310mm
Provenance: Castle family collection
\$250 – \$350
778. Len Castle
Stoneware dish of deep rectangular form with stippled decoration to the walls and shino-type glaze. L.270mm
Provenance: Castle family collection
\$250 – \$400
779. Len Castle
Stoneware dish of rectangular form with shino-type glaze. Incised initials to the base. L.300mm
Provenance: Castle family collection
\$300 – \$400
780. Len Castle
Earthenware dish with impressed stamped design to the well. Impressed initials. Rim frits. 360 x 330mm
\$200 – \$300
781. Doreen Blumhardt
Stoneware dish of rectangular form with poured red dark blue and light blue glaze on a celadon ground. Impressed marks and original sticker affixed to the base. 340 x 340mm
\$400 – \$600
782. Kay Green
Press moulded emerald green glazed dish decorated with an incised koru design. L.220mm
\$40 – \$80
783. Einar Hoste
Untitled Cube Form
brushed and polished cast aluminium in 8 parts
100 x 100 x 100mm variable
\$500 – \$800
784. Poole Aegean dish in a yellow and green abstract design. D. 200mm
\$40 – \$80
785. Selection of Ridgeway Homemaker china, two dinner plates, luncheon plate, dessert bowl and cup and saucer.
\$50 – \$100
786. English pewter hammer finished dish together with a Tudric pewter one pint water jug and a sugar basin.
\$150 – \$250
787. Italian Piero Fornasetti wall plate decorated with a sun burst design. D. 260mm
\$150 – \$250
788. Italian Piero Fornasetti wall plate decorated with a moon face design D. 260mm
\$150 – \$250
789. A 1950's plastic Cadbury Bournvita mug complete with blue plastic lid.
\$30 – \$50
790. 1950's Italian Vesuvina stove top espresso machine.
\$150 – \$200
791. 1950's aluminium lemon squeezer.
\$20 – \$50
792. Handpainted Poole dish with stylised floral design. D. 320mm
\$50 – \$100
793. Ian Spalding
Hand-knotted Kelim rug/wall hanging with abstract motifs in tan, black, yellow and brown on a charcoal ground. L.1720 x W.1040mm
\$300 – \$500
794. Pair of Mickey and Minnie Mouse cloth bodied toys circa 1930's.
\$400 – \$600
795. Vintage 1930's Frigidaire red painted fridge in working order. 1140 x 600mm
\$600 – \$1000
796. Demetre Chiparus (1886-1949)
Archer
Large and impressive patinated spelter figure, modelled and cast as an athletic young man balanced on one knee looking skyward holding a bow. Raised on a marble plinth. Signed and with presentation inscription in French – *Le Personnel De la SCIM a son directeur 1949-1956*. L.750 x H.620mm.
\$6500 – \$7500
797. Rare pair of 19th century German Meissen style musical figures. Modelled as a seated cross-legged oriental gentleman and a lady each with moveable hands, tongue and head and wearing hand-painted Chinese robes. Each figure perched on a blue velour cushion base which holds the musical movement. The movement playing 2 airs. Remains of a paper label to the base. The figures with minor faults. 190 x 150mm each.
Provenance: The Kevin Percy Collection, Hawke's Bay
\$4000 – \$6000
798. A good Royal Doulton cylindrical vase hand painted in the sea shells pattern by G. White. Signed with factory marks and signed label affixed to the base. H. 290 mm
\$800 – \$1600
799. A good Royal Doulton vase of ovoid shape painted with roses by Edward Raby, gilt handles to the shoulder [one handle repaired]. H. 360mm
\$400 – \$800
800. Hadley's Worcester ovoid vase hand painted with a rose pattern. H.180mm
\$100 – \$200
801. Hadley's Worcester vase painted with blackberries, flowers and leaves together with a Royal Worcester vase decorated in the Welford on Avon pattern. (3 items)
\$100 – \$200
802. Hadley's Worcester rose bowl painted with yellow and pink roses. D. 140mm
\$100 – \$200
803. Three Royal Worcester moulded leaf jugs of graduated size.
\$100 – \$200
804. Rosenthal porcelain powder bowl decorated with a skating scene and a small gilded dish.
\$100 – \$200
805. Royal Doulton veined flambé vase. H. 180mm
\$150 – \$250
806. Royal Doulton veined flambé bottle vase. H. 120mm
\$150 – \$250
807. Royal Copenhagen American Independence commemorative porcelain bowl. Hand painted with battle scenes from the American Revolution and numbered 837 of 2500 and with original box.
\$500 – \$800
808. Royal Doulton Sung flambé bowl by Arthur Eaton and Charles Noke decorated with an exotic bird on a rich red ground. Signed and additionally signed to the base. D. 180mm
\$500 – \$800
809. 18th century Wedgwood black basalt jardinière decorated with lion masks and vine swags along with sprig figures emblematic of the dramatic arts. Impressed factory marks and numerals. H.160 x D.175mm
\$1000 – \$2500

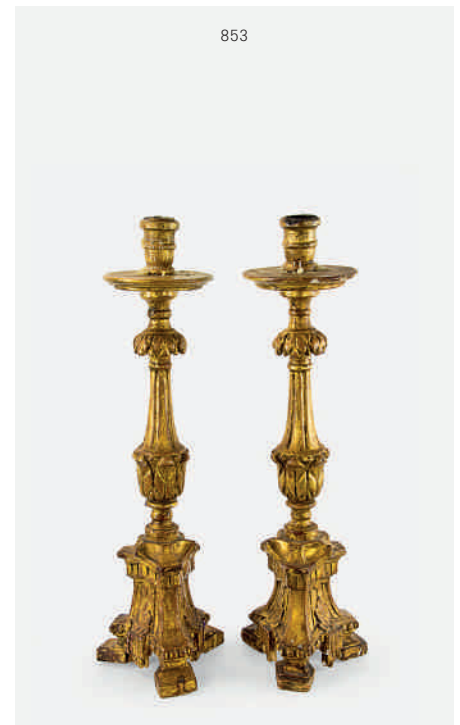
Antique and Decorators items

810. Royal Worcester leaf moulded jug. H.100mm
\$20 – \$40
811. Danico stoneware vase of ovoid shape. Hand painted and decorated with a stylised leaf design. H.300mm
\$50 – \$100
812. Keith Murray green glazed desk stand.
\$100 – \$200
813. Keith Murray green glazed lidded biscuit barrel. H. 130mm
\$100 – \$200
814. Four Grimwades Bruce Bairnsfather plates.
\$100 – \$200
815. Mother of pearl and brass cased opera glasses.
\$40 – \$80
816. Poole green glazed lathe turned vase of tapering cylindrical shape. H. 180mm
\$100 – \$200
817. Crown Devon stoneware jug with a slip trailed abstract design. H. 260mm
\$50 – \$100
818. Art Nouveau Loetz iridescent green dish with scalloped rim. D.140mm
\$100 – \$200
819. Murano AVE M glass vase decorated in the tutti frutti pattern. H. 290mm
\$400 – \$600
820. Brass and copper arts and crafts tray with leaf and grape border and hammer finishing with sinuous shaped handles by Cedric Storey. W. 760mm
\$100 – \$200
821. Glass decanter and five matching glasses with silver overlay foliate decoration.
\$50 – \$100
822. Gouda plate painted with a Kiwi. D. 280mm
\$100 – \$200
823. Plated silver fish servers with ivory handles together with a cased set of fish knives and forks.
\$40 – \$80
824. Pair of plated silver asparagus tongs, double struck Kings pattern.
\$40 – \$80
825. Pair of cut glass salt cellars with sterling silver rims.
\$30 – \$50
826. Three miniature Yising teapots.
\$50 – \$100
827. Japanese porcelain handling piece decorated with two cat fish.
\$30 – \$50
828. Collection of eleven pieces of Chinese Neolithic style jade.
\$100 – \$200





829. Pre-Columbian animal effigy vessel, black ware pottery of ovoid shape with cylindrical flared spout. W.260mm
Provenance: Martin Hill collection
\$200 – \$400
830. English Bristol blue glass ink well. D. 55mm
\$30 – \$50
831. Pair of decorative cast iron fox head busts made in the manner of stirrup cups.
\$300 – \$400
832. NZ folk art Ngati Tarawhai style carved desk stand carved with three figures. L.270mm
\$150 – \$300
833. Georgian sterling silver teapot of oval form with fruitwood handle and matching turned finial, engraved with a trailing floral band and floral wreath. London 1799 by John Mewburn, together with a matching stand raised on four feet.
\$700 – \$1100
834. Georgian sterling silver sugar basin with twin handles raised on four ball feet. London 1809.
\$250 – \$350
835. Georgian sterling silver fish slice. London 1806 by Peter and Ann Bateman, together with a cased pair of silver napkin rings.
\$200 – \$300
836. Sterling silver salver with piecrust edge raised on three scroll feet. Sheffield 1962 by Viners Ltd. D.300mm
\$400 – \$600
837. Pair of old Sheffield plate decanter coasters.
\$80 – \$120
838. Edwardian sterling silver rose bowl. Marks for London 1907 by George Howson. D.170mm
\$200 – \$400
839. Set of thirty one pieces of sterling silver fiddle, thread and shell pattern flatware comprising 12 table forks, 8 table spoons, 6 dessert forks, 4 dessert spoons and a sauce ladle.
\$3000 – \$4000
840. 19th century English copper samovar. H. 390mm
\$50 – \$100
841. 19th century copper kettle of generous proportions with wrought iron handle.
\$50 – \$100
842. French copper flambé pan with brass handle together with eight copper plates with hammer finish detailing.
\$50 – \$100
843. An unusual Victorian purple slag glass tea caddy of sarcophagus shape with fine floral decoration to the exterior, the interior with divided compartments. W.180mm
\$800 – \$1200
844. An early 19th century English brass pestle and mortar. The mortar with twin handles and inscribed date 1825. H.100mm
\$200 – \$300
845. 19th century bass chamber stick together with another smaller chamber stick.
\$40 – \$60
846. 19th century copper coach horn with cast brass crest. Inscribed Bath – Wellington. L.1160mm
\$50 – \$100
847. 19th century copper bed warming pan with turned wood handle. L.1010mm
\$50 – \$100
848. Collection of blue and white Victorian table ware, four tureens and stands, three ladles and two bowls. Some faults evident
\$100 – \$200
849. Georgian portrait painting of Commodore Thomas Macdonough in a gilt gesso frame. Circa 1814. 300 x 230mm
\$400 – \$800
850. 19th century French gilded brass Gothic revival clock garniture. The clock with white enamel dial and roman numerals, eight day bell striking movement. Impressed mark *Planchon, Palais Royal*. The matching garniture candelabra each with four sconces.
\$3500 – \$4500
851. 19th century Italian decorative bronze ecclesiastical candelabra. 760 x 530mm
\$1000 – \$2000
852. 19th century Italian decorative bronze ecclesiastical candelabra. 760 x 530mm
\$1000 – \$2000
853. A good pair of Spanish 19th century giltwood ecclesiastical altar candlesticks.
Provenance purchased from Wendy Hart antiques. H. 650mm
\$800 – \$1200
854. Spanish gilt brass ecclesiastical candle stand, the tubular sconce supported on a fluted tapering column on three foliate scroll cast legs. H. 1050mm
\$400 – \$800



855. A good 19th century gilt brass Gothic Revival ecclesiastical candle stand. H. 850mm
\$600 – \$1200
856. A good 18th century ivory figure of St Anthony mounted on a wooden plinth. H. 200mm
\$1000 – \$2000
857. Gilded plaster ecclesiastical candle stand. H. 510mm
\$40 – \$80
858. Large 18th century Spanish fruitwood coffer of generous proportions with metal escutcheon and fielded panels to the front, sides and back. W. 1720 x D. 560 x H. 800mm
\$1800 – \$3000
859. 19th century Biedermeier three seater sofa in figured mahogany with serpentine cresting rail and scroll arms. Upholstered in a green Regency striped fabric. W. 2080mm
\$3500 – \$4500
860. Victorian toilet mirror with white Carrara marble base with foliate carved supports, supporting an oval mirror. W. 600mm
\$100 – \$200
861. Irish pine dresser. The upper section back with three shelves beneath a stepped cornice, the lower section two drawers above panelled cupboards. W. 1500 x H. 2100mm
\$1000 – \$1500
862. 19th century Spanish rustic hall table with rectangular top raised on a trestle form base. W. 1400 x H. 570mm
\$800 – \$1200
863. French gilt wood foliate carved pediment. W. 580 x H. 830mm
\$200 – \$400
864. Revolving bookcase with thumb moulded top and eight divided compartments. H. 860mm
\$300 – \$600
865. 19th century Baltic pine kitchen table with a single drawer to each end raised on tapering legs. L. 1200mm
\$250 – \$500
866. Late 19th century twin pedestal desk. The top with sloped writing surface with green tooled leather top below a superstructure with pigeon holes flanked by small drawers. Each pedestal with three drawers. W. 1220mm
\$600 – \$1200
867. 18th century English elm settle. The back carved with mythical sea creatures and floral decoration, raised on turned legs united by stretchers. Offered together with a hand knotted Kazak camel bag fashioned to form a cushion. W. 1400mm
\$800 – \$1400
868. Pair of French oak bedside cabinets raised on cabriole legs with porphyry marble tops. H. 840 x W. 400mm
\$500 – \$800
869. Decorative French gilt wood over mantle mirror. H. 850 x W. 1240mm
\$500 – \$1000
870. French oak cabinet with cupboards above two drawers raised on tapering legs. H. 1600 x W. 760mm
\$200 – \$400
871. Hand knotted wool weft and warp Turkish Bedir rug, the central gull with geometric and floral motif in red and blue. 1900 x 1140mm
\$300 – \$500
872. Hand knotted wool Pakistani Bokhara rug with three rows of gulls and with geometric decoration on a russet field. 1980 x 1290mm
\$200 – \$400
873. Hand knotted wool Iranian runner decorated with floral and geometric patterning on a russet field. 2970 x 800mm
\$300 – \$500
874. Hand knotted Iranian Kurdish rug decorated in a complex hooked motif pattern on a cream field with multi coloured geometric motif patterned rug. 2700 x 1600mm
\$800 – \$1000
875. Hand knotted Iranian wool runner with geometric decoration in blue, cream and russet. L. 3760 x 810mm
\$300 – \$500
876. Hand knotted Turkish Yagcibidir rug with floral and geometric decoration in red on a blue field. 1950 x 1100mm
\$250 – \$400
877. Hand knotted Afghani runner with repeating geometric gulls and floral decoration on a rich red field. \$400 – \$800

Conditions of sale

Please note: it is assumed that all bidders at auction have read and agreed to the conditions described on this page.
ART+OBJECT directors are available during the auction viewing to clarify any questions you may have.

1.

Registration: Only registered bidders may bid at auction. You are required to complete a bidding card or absentee bidding form prior to the auction giving your correct name, address and telephone contact + supplementary information such as email addresses that you may wish to supply to ART+OBJECT

2.

Bidding: The highest bidder will be the purchaser subject to the auctioneer accepting the winning bid and any vendor's reserve having been reached. The auctioneer has the right to refuse any bid. If this takes place or in the event of a dispute the auctioneer may call for bids at the previous lowest bid and proceed from this point. Bids advance at sums decreed by the auctioneer unless signaled otherwise by the auctioneer. No bids may be retracted. The auctioneer retains the right to bid on behalf of the vendor up to the reserve figure.

3.

Reserve: Lots are offered and sold subject to the vendor's reserve price being met.

4.

Lots offered and sold as described and viewed: ART+OBJECT makes all attempts to accurately describe and catalogue lots offered for sale. Notwithstanding this neither the vendor nor ART+OBJECT accepts any liability for errors of description or faults and imperfections whether described in writing or verbally. This applies to questions of authenticity and quality of the item. Buyers are deemed to have inspected the item thoroughly and proceed on their own judgment. The act of bidding is agreed by the buyer to be an indication that they are satisfied on all counts regarding condition and authenticity.

5.

Buyers premium: The purchaser by bidding acknowledges their acceptance of a buyers premium of 15% + GST on the premium to be added to the hammer price in the event of a successful sale at auction.

6.

ART+OBJECT is an agent for a vendor: A+O has the right to conduct the sale of an item on behalf of a vendor. This may include withdrawing an item from sale for any reason.

7.

Payment: Successful bidders are required to make full payment immediately post sale – being either the day of the sale or the following day. If for any reason payment is delayed then a 20% deposit is required immediately and the balance to 100% required within 3 working days of the sale date. Payment can be made by Eftpos, bank cheque or cash. Cheques must be cleared before items are available for collection. Credit cards are not accepted.

8.

Failure to make payment: If a purchaser fails to make payment as outlined in point 7 above ART+OBJECT may without any advice to the purchaser exercise its right to: a) rescind or stop the sale, b) re offer the lot for sale to an underbidder or at auction. ART+OBJECT reserves the right to pursue the purchaser for any difference in sale proceeds if this course of action is chosen, c) to pursue legal remedy for breach of contract.

9.

Collection of goods: Purchased items are to be removed from ART+OBJECT premises immediately after payment or clearance of cheques. Absentee bidders must make provision for the uplifting of purchased items (see instructions on the facing page)

10.

Bidders obligations: The act of bidding means all bidders acknowledge that they are personally responsible for payment if they are the successful bidder. This includes all registered absentee or telephone bidders. Bidders acting as an agent for a third party must obtain written authority from ART+OBJECT and provide written instructions from any represented party and their express commitment to pay all funds relating to a successful bid by their nominated agent.

11.

Bids under reserve & highest subject bids: When the highest bid is below the vendor's reserve this work may be announced by the auctioneer as sold 'subject to vendor's authority' or some similar phrase. The effect of this announcement is to signify that the highest bidder will be the purchaser at the bid price if the vendor accepts this price. If this highest bid is accepted then the purchaser has entered a contract to purchase the item at the bid price plus any relevant buyers premium.

Important advice for buyers

The following information does not form part of the conditions of sale, however buyers, particularly first time bidders are recommended to read these notes.

A.

Bidding at auction: Please ensure your instructions to the auctioneer are clear and easily understood. It is well to understand that during a busy sale with multiple bidders the auctioneer may not be able to see all bids at all times. It is recommended that you raise your bidding number clearly and without hesitation. If your bid is made in error or you have misunderstood the bidding level please advise the auctioneer immediately of your error – prior to the hammer falling. Please note that if you have made a bid and the hammer has fallen and you are the highest bidder you have entered a binding contract to purchase an item at the bid price. New bidders in particular are advised to make themselves known to the sale auctioneer who will assist you with any questions about the conduct of the auction.

B.

Absentee bidding: ART+OBJECT welcomes absentee bids once the necessary authority has been completed and lodged with ART+OBJECT. A+O will do all it can to ensure bids are lodged on your behalf but accepts no liability for failure to carry out these bids. See the Absentee bidding form in this catalogue for information on lodging absentee bids. These are accepted up to 2 hours prior to the published auction commencement.

C.

Telephone bids: The same conditions apply to telephone bids. It is highly preferable to bid over a landline as the vagaries of cellphone connections may result in disappointment. You will be telephoned prior to your indicated lot arising in the catalogue order. If the phone is engaged or connection impossible the sale will proceed without your bidding. At times during an auction the bidding can be frenetic so you need to be sure you give clear instructions to the person executing your bids. The auctioneer will endeavour to cater to the requirements of phone bidders but cannot wait for a phone bid so your prompt participation is requested.

D.

New Zealand dollars: All estimates in this catalogue are in New Zealand dollars. The amount to be paid by successful bidders on the payment date is the New Zealand dollar amount stated on the purchaser invoice. Exchange rate variations are at the risk of the purchaser.

Absentee bid form

Auction No. 63

New Collectors Art

5 March 2013

(lots 1 – 211)

Asian Art

6 March 2013

(lots 220 – 566)

Modern Design and Decorative Arts

7 March 2013

(lots 570 – 877)

This completed and signed form authorizes ART+OBJECT to bid on my behalf at the above mentioned auction for the following lots up to prices indicated below. These bids are to be executed at the lowest price levels possible.

I understand that if successful I will purchase the lot or lots at or below the prices listed on this form and the listed buyers premium for this sale (15%) and GST on the buyers premium. I warrant also that I have read and understood and agree to comply with the conditions of sale as printed in the catalogue.

Lot no.	Description	Auction Date	Bid maximum (New Zealand dollars)
_____	_____	_____	_____
_____	_____	_____	_____
_____	_____	_____	_____
_____	_____	_____	_____
_____	_____	_____	_____
_____	_____	_____	_____
_____	_____	_____	_____
_____	_____	_____	_____
_____	_____	_____	_____
_____	_____	_____	_____
_____	_____	_____	_____

Payment and Delivery ART+OBJECT will advise me as soon as is practical that I am the successful bidder of the lot or lots described above.

I agree to pay immediately on receipt of this advice. Payment will be by cash, cheque or bank transfer. I understand that cheques will need to be cleared before goods can be uplifted or dispatched. I will arrange for collection or dispatch of my purchases. If ART+OBJECT is instructed by me to arrange for packing and dispatch of goods I agree to pay any costs incurred by ART+OBJECT. Note: ART+OBJECT requests that these arrangements are made prior to the auction date to ensure prompt delivery processing.

Please indicate as appropriate by ticking the box:

☐ PHONE BID

☐ ABSENTEE BID

MR/MRS/MS: _____

SURNAME: _____

POSTAL ADDRESS: _____

STREET ADDRESS: _____

BUSINESS PHONE: _____

MOBILE: _____

FAX: _____

EMAIL: _____

Signed as agreed: _____

To register for Absentee bidding **this form must be lodged with ART+OBJECT by 2pm** on the day of the published sale time in one of three ways:

1. Fax this completed form to ART+OBJECT +64 9 354 4645
2. Email a printed, signed and scanned form to: info@artandobject.co.nz
3. Post to ART+OBJECT, PO Box 68 - 345 Newton, Auckland 1145, New Zealand

ART+OBJECT 3 Abbey Street, Newton, Auckland, New Zealand. Telephone +64 9 354 4646, Freephone 0800 80 60 01

Artist's Index

New Collectors Art
Auction No. 63

Aberhart, Laurence 62, 63	Dutch, Ted 182, 193	Matchitt, Gina 106	Stichbury, Peter 29, 141
Albrecht, Gretchen 119	Ellis, Robert 54	McArthur, Piera 163	Stringer, Terry 24, 25, 26, 32
Apple, Billy 192	Esling, Simon 135	McCahon, Colin 54, 76	Tapper, Garth 16
Bagnall, Catherine 110	Feu'u, Fatu 125	McIntyre, Mary 202	Tawhio, Tracey 38
Baloghy, George 14, 88	Fomison, Tony 118, 129	McIntyre, Peter 7	Taylor, Alan 175
Bambury, Stephen 17	Frizzell, Dick 97, 116, 121	McIntyre, Simon 146, 147, 173	Taylor, E. Mervyn 62, 155, 156, 157, 158, 159, 160, 161, 162
Binney, Don 54, 140	George, Darryn 52	McPhee, Charles 200, 201	Tjampitjinpa, Shorty Jackson 198
Bizumic, Mladen 22	Hammond, Bill 8, 9, 51, 117	Miller, Judy 10	Tocher, Hamish 71
Blackman, Charles 99	Hanly, Pat 54, 77, 78, 133, 188	Mitchell, Samantha 91, 92, 93	Tole, Charles 87
Blair, Philpa 153	Harrison, Michael 169	Mrkusich, Milan 54, 206	Tornquist, Herbert 124
Boros, A. Louis 176	Hartigan, Paul 1	Palmer, Stanley 37	Tricker, Gary 186
Bradley, Marissa 102	Heaphy, Chris 39, 168	Pardington, Fiona 74, 75	Turkington, James 109
Brown, Helen 130	Helmore, Des 134	Parekowhai, Michael 43, 44	Twiss, Greer 27, 33
Brown, Nigel 79, 80, 112, 113, 167	Hemer, Andre 165	Paterson, Rueben 6, 42, 136	Walsh, John 11
Calvert, Daniel 148	Hickin, Roger 142	Patterson, Keith 166, 190	Walters, Gordon 2, 54, 53A
Cauchi, Ben 73	Hipkins, Gavin 125, 126, 127	Paul, Joanna Margaret 151	Watkins, Denys 89, 90
Chance, George 69, 70	Hollins, Anna 152	Peryer, Peter 65, 68	Weeks, John 111, 209
Chilcott, Gavin 85, 86, 132, 194	Holmwood, John 13	Pick, Seraphine 145, 149	Westra, Ans 35, 66, 67
Clairmont, Philip 143	Horsley, Jean 197	Pickmere, Alison 191	White, A. Lois 107, 108
Cleavin, Barry 183, 184, 185	Hotere, Ralph 12, 53, 54, 115, 127	Popovici, Christina 164	White, Robin 3, 4, 5, 15
Cleverley, Peter 122	Hunter, Alexis 171	Pound, Patrick 19, 72	Wilkinson, Brendan 28
Conrad, Christina 103, 104, 105	Hurley, Gavin 128, 144	Pule, John 34, 207	Williams, Mervyn 54, 205
Cotton, Shane 40, 41	Illingworth, Michael 54, 208	Reithmier, Anne 172	Wolfe, Emily 123
Creed, Martin 20	Jacks, Robert 154	Reynolds, John 15A, 21	Wood, Agnes 114
Dashper, Julian 15, 138	Kahukiwa, Robyn 81, 120	Richmond, Dorothy Kate 137	Woollaston, Toss 54
Daw, Bing 170	Killeen, Richard 50, 101, 131	Ritchie, Ross 54	Wright, Walter 195
Dawson, Neil 30, 31	Knight Turner, Dennis 200, 201	Robinson, Peter 18	Youle, Wayne 36
de Lautour, Tony 23	Lane, Tony 180	Savage, Cedric 196	
de Saint Phalle, Nicky 100	Lela'ulu, Nanette 174	Shannon, Marie 64	
Dolezel, Jenny 150, 181	Lewer, Richard 211	Sladden, Tom 189	
Drawbridge, John 187	Lochore, Brad 126	Smither, Michael 45, 54, 83, 84, 98, 139, 199, 203, 204	
Driver, Neil 197	Maddox, Allen 46, 47, 48, 94, 95, 96, 177, 178, 179, 210	Stevenson, Michael 104	



586



603



585



602



601



596



576



595



592

