

CATALOGUE 63
MARCH 2013

NEW COLLECTORS ART
5 MARCH

ASIAN ART
6 MARCH

MODERN DESIGN AND
DECORATIVE ARTS
7 MARCH

ART +
OBJECT





581



578



580



570



584



582



575



577



579



New Collectors Art

Tuesday 5 March at 6.30pm

Asian Art

Wednesday 6 March at 6.30pm

Modern Design and Decorative Arts

Thursday 7 March at 6.30pm



Martin Creed, *Work No. 1273*
(lot 20), Holmegaard Gul vases (lots
743a & 743b), Clausen and Son Danish
sideboard (lot 674),
Len Castle bird-headed bowl (lot 744),
Richard Hornby design coffee table
(lot 679)

WELCOME TO A+O'S FIRST CATALOGUE OF 2013.

Coming in at over 800 lots this is a large and diverse offering presented over three nights in early March. 2012 was a record year for ART+OBJECT and the directors and staff would like to thank all of our clients and friends for choosing A+O. From landmark collections such as The Les and Milly Paris Collection to smaller and fascinating holdings of Crown Lynn, Chinese Jade, Modern Design and Contemporary Art 2012 saw A+O offer numerous collections assembled over many decades.

This catalogue features two genres which have experienced heightened collector interest in recent years, 20th century design and Asian art. With this growth comes a greater level of knowledge and a burgeoning sense of community. Again we would like to thank our buying and selling clients for their generosity in sharing their knowledge and enthusiasm. The Asian and decorative arts section of the catalogue includes selected pieces from the collection of well-known Hawkes Bay antique dealer and auctioneer Kevin Percy who after fifty years as an institution in the lower North Island is passing the baton to the next generation. We are pleased to be able to offer a few choice items in this catalogue as Kevin's eye for quality is renowned.

The viewing for the catalogue will be a lively affair as collectors and the curious meet and swap stories and consider the future direction of their collections. Please note that lot 538 in the Asian catalogue, the *shunga* scroll, is of an explicit nature. It will not be prominently displayed and will be available to view on request.

We look forward to welcoming you to our first catalogue of 2013. Please take time to view the works which will be offered to raise funds for a project to honour Hone Tuwhare and create an ongoing legacy that will benefit New Zealand into the future.



Fundraising Art Auction for The Hone Tuwhare Charitable Trust 5th March 2013

The Hone Tuwhare Charitable Trust is delighted to have been gifted these five stunning artworks by John Pule, Ans Westra, Stanley Palmer, Tracey Tawhiao and Wayne Youle. These artworks are lots 34–38 on pages 20–21 in this catalogue.

In 2012 Hone's crib was secured for the trust thanks to a private philanthropic organisation. This year we aim to raise \$500,000 to renovate Hone's crib and studio – and build a multi-purpose whare / visitor centre to host writers and their whanau, artists or actors, small groups and school visits.

In the stunning Kaka point and Catlins area, this will be the first residence in the home of a Maori writer. Hone's inclusive nature and generosity is reflected in our kaupapa.

This is a great opportunity to support the trust in this exciting project. For more information, please see the trust's website: www.honetuwhare.org.nz

ART+
OBJECT

ART+OBJECT

3 Abbey Street
Newton
Auckland

PO Box 68 345
Newton
Auckland 1145

Telephone: +64 9 354 4646
Freephone: 0 800 80 60 01
Facsimile: +64 9 354 4645

info@artandobject.co.nz
www.artandobject.co.nz

Front cover:

Lot 583
A fine set of
Waterbuck horns

Rear cover:

Lot 594
13 point taxidermy
Stag's head

First he will want your car,
then the family firm.

Are you OK with that?



Intergenerational succession decisions can be very uncomfortable by nature. However, highly thought-out and no nonsense advice from wealth and business expert Nigel Smith will facilitate every stage of the process.

Covisory Partners provides independent advice, backed by solid wealth, tax and business strategies. Our clients tell us Nigel's straight forward approach is refreshing, so we invite you to begin a discrete discussion so you can not only experience it yourself, but also benefit earlier from the peace-of-mind it will almost certainly bring.

CONSULTING +
PRIVATE CLIENTELE

Ph 0800 898 181

Covisory
PARTNERS

Wealth | Tax | Business

Nigel Smith
nigel@covisory.com
www.covisory.com



Colin McCahon

Noughts and Crosses, Series II, No. V

synthetic polymer paint on Steinbach paper
mounted to hardboard
title inscribed, signed with artist's initials C.
McC and dated '76
1095 x 730mm

Exhibited

'Colin McCahon: Paintings—Noughts and
Crosses, Rocks in the Sky, On the Road',
Barry Lett Galleries, Auckland, 23 August – 3
September 1976, Cat. No. 2.

'Colin McCahon: A Question of Faith', Stedelijk
Museum, Amsterdam, The Netherlands,
30 August – 10 November, 2002 (touring
Australasia 2002 – 2004).

Illustrated

Marja Bloem and Martin Browne, Colin
McCahon: A Question of Faith (Nelson, 2002),
p. 135.

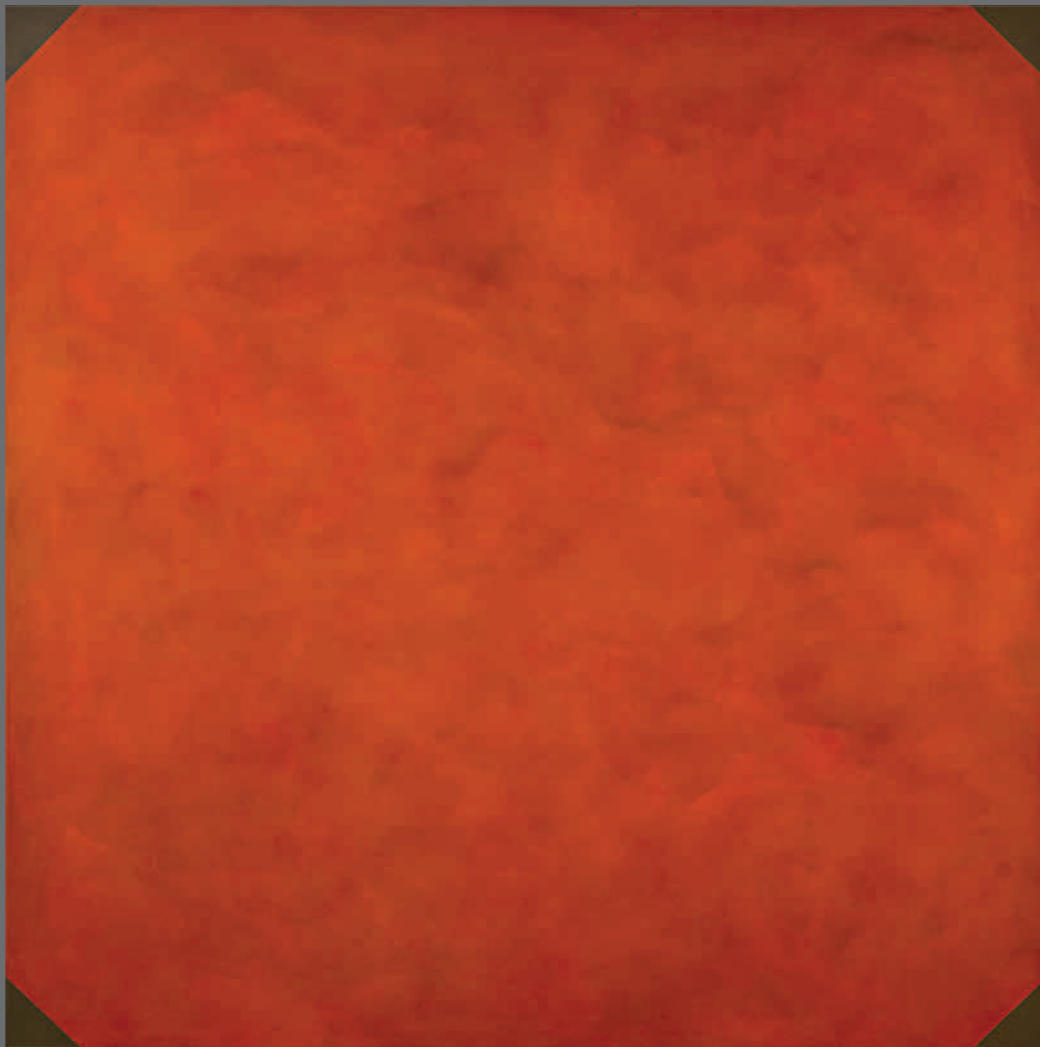
Reference

Colin McCahon Database (www.mccahon.co.nz) CM001522.

Provenance

Collection of Kim Wright, Auckland.
Private collection, Australia.

\$230 000 – \$300 000



Important Paintings & Contemporary Art

THURSDAY 11 APRIL

CONSIGNMENTS NOW INVITED UNTIL 15 MARCH

ART+OBJECT announces the production of an especially significant catalogue and invites expressions of interest from potential consignors. Spaces are limited in this catalogue and early consignment is advisable. To discuss any aspect of the current market along with our plans for this auction catalogue please contact Director of Art, Ben Plumbly.

ben@artandobject.co.nz
021 222 8183

Milan Mrkusich
Painting Red 1976
acrylic on canvas
title inscribed, signed and dated '76 verso
1800 x 1730mm
Provenance
Private collection, Wellington.
Private collection, Auckland.
\$65 000 – \$85 000



Garth Chester bent plywood Curvese chair \$8790



Sigurd Ressel for Vatne Mobler Falcon chair \$4920



A pair of Hans Wegner GE375 chairs in oak \$5390



Charles and Ray Eames for Herman Millar Eames sofa in black leather \$8205



Milo Baughman for Selig tub sofa \$6680

2012 HIGHLIGHTS OBJECTS AND 20TH CENTURY DESIGN

In 2012 A+O presented three dedicated catalogues featuring collectable 20th century design. New Zealand ceramics and superior private collections the most notable of which were the Tim and Natasha English Collection, The estate of legendary New Zealand ceramicist Len Castle and the Karakter collection of British and Continental design. Total sales of over \$700 000 were testimony to the ongoing and growing collector commitment to and passion for handmade applied art and limited edition modern design.



Ludwig Mies van der Rohe Barcelona daybed \$5275



Theo Schoon Carved pounamu pendant \$5745



Len Castle Lava lake Bowl d.470mm \$5393



A Pair of French prototype arm chairs \$5860



Ernest Shufflebotham for Crown Lynn rare handpainted ovoid vase \$2345



Len Castle Sulphurous Bowl d.415mm \$8793



Len Castle An early salt glaze vase, circa 1952 \$6565



Len Castle Inverted Volcano moulded vase l.845mm \$9614



the art issue

INSIDE ARTISTS' HOMES AND STUDIOS

FRANCIS UPRITCHARD | ANTHONY GOICOLEA
 FIONA PARDINGTON | TONY DE LAUTOUR | EMILY WOLFE
 MARTINO GAMPER | RUTH CASTLE | ROHAN WEALLEANS
 DICK FRIZZELL | WILLIAM SUTTON | AND MUCH MORE

ON NEWSSTANDS NOW





Two 19th century rhino horn cups
\$9380 & \$9965



A pale celadon jade carving
depicting two immortal boys
\$12 310



Chinese large Hotan
(Hetian) see material
green jade carving
\$12 895



Chinese pale celadon
and russet Hotan
(Hetian) jade pendant of
a recumbent buffalo
\$7620



A group of three pale celadon
jade animal pendants
\$18 760

2012 HIGHLIGHTS ASIAN AND DECORATIVE ARTS

2012 was a watershed year for the presentation of Asian decorative arts in New Zealand. In February A+O offered its first ever dedicated Asian art catalogue which featured the exceptional provenance, quality and history of the Leo Tattersfield collection of Chinese jade. By years end A+O had offered two dedicated Asian art catalogue and sold over \$650 000 Asian and Decorative arts, attracting buyers from all over the world with live internet bidding.



Two russet jade animal carvings
of a tiger and a small dog
\$18 760



A rare sandstone figure of
Uma, Khmer Baphuon style
11-12th century
\$11 725



A matched pair of early
20th century Chinese famille
rose bottle vases
\$23 450



19th century Chinese
carved ivory figure of the
Bodhisattva Guanyin
\$9675



Queen Anne period walnut
chest on stand
\$11 725

SELLING THE DREAM

The Art of Early New Zealand Tourism



A critically acclaimed book bringing overdue recognition to the significance of early graphic art

To see such a beautiful and painstaking catalogue is quite literally breathtaking ... I'm amazed we even had artists and designers of this calibre!

Dick Frizzell, Artist

It is in the art of the poster that artists use their imagination and invention to unashamedly celebrate and reveal the uniqueness of the New Zealand scene.

Hamish Keith, Cultural Historian

This book is as much about art as it is about New Zealand's promotion of visual identity.

Ron Brownson, Auckland Art Gallery

Imagine an alternative art history where the painters we celebrated weren't Rita Angus, Toss Woollaston and Colin McCahon, but names such as Leonard Mitchell, Marcus King and Howard Mallitte.

Guy Somerset, The Listener

Will there ever be a better book than this one on New Zealand's unsung commercial designers? It's hard to imagine looking at what a terrific job has been done here.

Jim & Mary Barr, Over the Net arts blog

A more generous consideration of the history of New Zealand art would acknowledge that commercial and fine art have always shared much in common.

Warren Feeney, Academy of Fine Arts

The essential sourcebook ... an inspiring example of private scholarship and research into the NZ arts.

Antony Ellis, New Zealand Art Print News

You've sold me this particular dream alright. Ka kite ano Toss, Colin and Ralph; kia ora Marcus King and Leonard Mitchell! This book is one fantastic contribution to New Zealand art history.

Mark Stocker, Associate Professor

Buy from www.sellingthedream.co.nz to receive a 10% discount and free domestic postage (RRP\$79.95).



ASIAN ART AND FINE DECORATIVE ARTS

JUNE 2013

This sale will include the collection of well-known author Pat Booth as well as The Ann Matheson collection of Japanese art together with a superb offering of Chinese snuff bottles and Chinese antiques. Also included in this sale will be further items from the David Cook collection of decorative arts

Further entries invited

Contact:

James Parkinson
James@artandobject.co.nz
09 354 4646
021 222 8184

Giulia Rodighiero
Asian Art Specialist
Giulia@artandobject.co.nz
09 354 4646

Image:

A fine 19th century Chinese jade pieced and carved snuff bottle. H.95mm
\$1500 – \$2000



NZ AND INTERNATIONAL STUDIO POTTERY AND MODERN DESIGN

JUNE 2013

2012 saw a marked upturn in collector interest in New Zealand applied arts from the post WWII period. A number of superb and rare to market lots have already been consigned to what is anticipated to be a landmark catalogue in June.

This sale will feature a collection of Hamada Shoji pottery from the collection of the New Zealand potter John Patrick together with fine examples from Shimaoka Tatsuzo, Michael Cardew and other international potters. The New Zealand pottery section features superb pieces from Len Castle, Mirek Smisek, John Parker, Rick Rudd, Barry Brickell and Harry and May Davis. The modern design sale will feature NZ and international mid-century pieces together with industrial design furniture.

Further entries are invited

Contact:

James Parkinson
James@artandobject.co.nz
09 354 4646
021 222 8184

Image:

Hamada Shoji
Bowl with Kaki glaze and wax resist brushwork. D.330mm
Provenance: John Patrick collection
Exhibited during Hamada's visit to New Zealand
\$3000 – \$5000

RARE BOOKS
WEDNESDAY 20TH MARCH
AT 1PM

A selection from over 150 W.E. Johns Biggles, Steely and Worrals adventure novels including many first editions and most with original dustjackets.

A+O's first Rare Book catalogue of 2013 includes a collection of rare illustrated Materia Medica which includes The Herbal or General History of Plants by John Gerard from 1636 and Botolonogia by William Salmon from 1710. The collection also includes Culpeper's Physical and Chemical Way of Curing the most Difficult and Incurable Diseases of 1656. The New Zealand section of the catalogue will feature several early Auckland Land Deeds dating to the early 1840s and fine illustrated volumes.

Entries invited until March 1st

Contact:

Pam Plumbly
pam@artandobject.co.nz
09 354 4646





The Collection of the Late Nicholas Browne: May 14th

ART+OBJECT announces the collection of the late Nicholas Browne. A carefully considered, directional and idiosyncratic collection principally compiled in the 1990s, Browne possessed a wonderful eye for contemporary art informed by close relationships with artists, dealers and fellow collectors. The collection consists of around 60 lots by key contemporary New Zealand artists, many of whom Browne collected in depth, including: Andrew McLeod, Julian Dashper, Bill Hammond, Peter Robinson, Giovanni Intra, Séraphine Pick, Richard Killeen, Ralph Hotere and many more.

Andrew McLeod
Economy
oil on canvas
signed with artist's initials
A. McC and dated 1999
635 x 425mm
\$5000 - \$8000

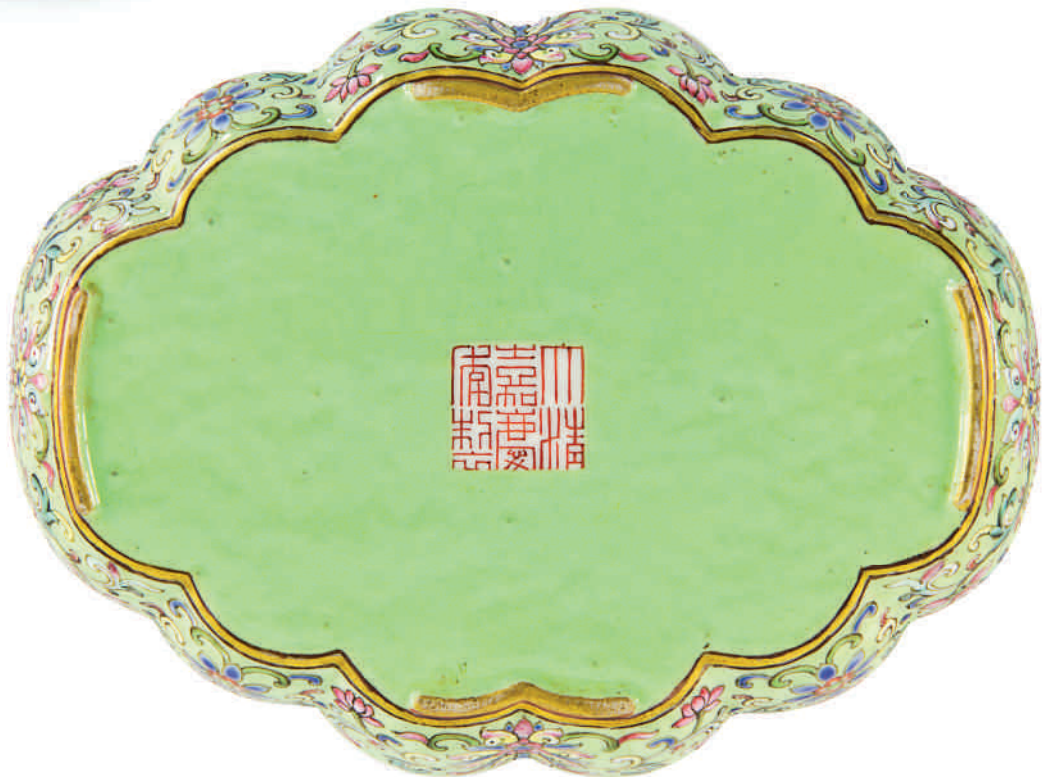
For further information please contact:

Ben Plumbly
Director of Art
DDI: (09) 306 6191
Cell: 021 222 8183
ben@artandobject.co.nz



Lot 360

Jiaqing mark and period
 (1796-1820) Chinese green-
 ground *famille rose* lobed
 tea-tray, dated to 1797.





Asian Art

Wednesday 6 March at 6.30pm

3 Abbey Street, Newton, Auckland

亞洲藝術拍賣會

二零一三年三月六日 (星期三) 晚上六點半

3 Abbey Street, Newton, Auckland

VIEWING

Friday 1 March 9.00am – 5.00pm

Saturday 2 March 11.00am – 4.00pm

Sunday 3 March 11.00am – 4.00pm

Monday 4 March 9.00am – 5.00pm

Tuesday 5 March 9.00am – 1.00pm

Wednesday 6 March 9.00am – 1.00pm

Please note that viewing after 1pm on March 6 is limited due to preparations for the auction in the evening. Interested bidders are kindly requested to make their inspections prior to 1pm on the auction day.

請注意：二零一三年三月六日(星期三)亞洲藝術拍賣會的觀看時間將會在下午一點(1pm)結束，一點之後，工作人員會利用場地來準備晚上的拍賣會，請各位儘量在三月六日下午一點前到現場觀看。如果您在一點前抽不出時間，我們歡迎您在下午一點後來觀看，但是您所能看到的拍賣品將非常有限。感謝您的諒解！

Chinese Art

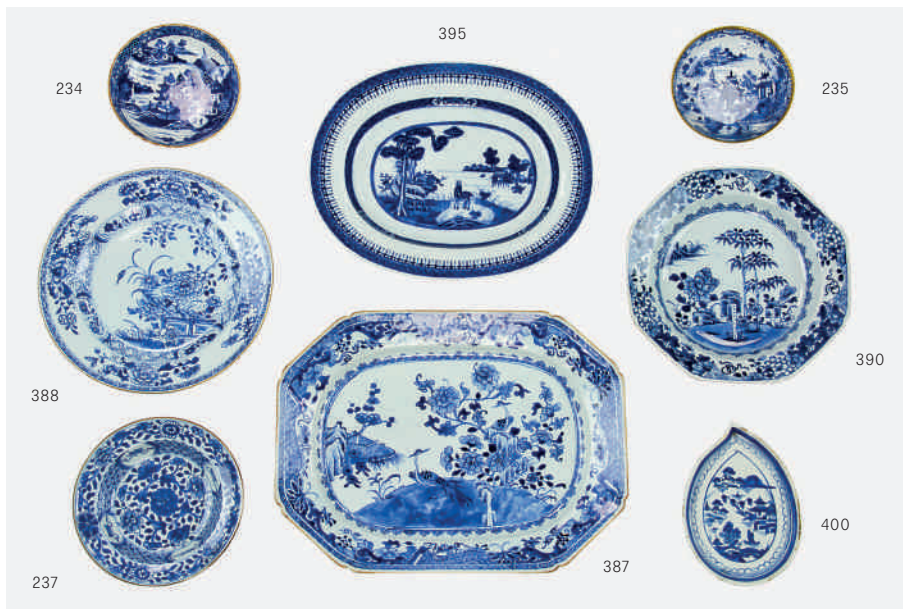
The following 12 lots are from a private collection of Chinese ceramics from the Tek Sing shipwreck, which sank in 1822 in the South China Sea

Catalogue note: all Asian Art lots illustrated online at www.artandobject.co.nz

220. Chinese brown-glazed tall slender circular carafe from the Tek Sing shipwreck, partially covered with barnacles. H. 190mm
\$100 – \$200
221. Two Chinese brown-glazed tall slender circular carafes from the Tek Sing shipwreck. H. 180mm max
\$100 – \$200
222. Two Chinese brown-glazed tall slender circular carafes from the Tek Sing shipwreck. H. 190mm max
\$100 – \$200
223. Three Chinese brown-glazed tall slender circular carafes from the Tek Sing shipwreck. H. 190mm max
\$100 – \$200
224. Selection of Chinese pottery from the Tek Sing shipwreck, including four blue and white bowls, two celadon ones and six spoons. D. 170mm max
\$150 – \$250
225. Selection of Chinese pottery from the Tek Sing shipwreck including four small blue and white bowls, four spoons, three blue and white dishes and two smaller celadon dishes. D. 185mm max
\$150 – \$250
226. Selection of Chinese pottery from the Tek Sing shipwreck, including three small blue and white bowls, two spoons, two blue and white dishes, six olive-brown glazed saucers and four small moulded dishes. D. 175mm max
\$150 – \$250
227. Selection of Chinese pottery from the Tek Sing shipwreck, including four small blue and white bowls, four spoons, two blue and white dishes and six olive-brown glazed saucers. D. 185mm max
\$150 – \$250
228. Selection of Chinese pottery from the Tek Sing shipwreck, including two small crackled glaze celadon bowls, two blue and white dishes, five small moulded dishes and four olive-brown glazed saucers. D. 180mm max
\$150 – \$250
229. Selection of Chinese pottery from the Tek Sing shipwreck including four small blue and white bowls, four spoons, four celadon saucers, four olive-brown glazed saucers and four small moulded dishes. D. 110mm max
\$150 – \$250



230. Selection of Chinese pottery from the Tek Sing shipwreck including four small blue and white bowls, four spoons, four celadon saucers, four olive-brown glazed saucers and four small moulded dishes. D. 110mm max
\$150 – \$250
231. Selection of Chinese pottery from the Tek Sing shipwreck, including five small blue and white bowls, six olive-brown glazed saucers and six small moulded dishes. D. 110mm max
\$150 – \$250
232. Nagel Auctions, *Tek Sing Treasures* catalogue, auction 17th November 2000.
\$40 – \$80
233. Very good 18th century Chinese export blue and white Nanking pattern cup and saucer with gilt design to the rims. D. 157mm max
\$400 – \$800
234. 18th century Chinese export blue and white Nanking pattern saucer dish. D. 135mm
\$250 – \$350
235. Set of three 18th century Chinese export blue and white Nanking pattern saucer dishes with gilt rims. D. 127mm
\$500 – \$800
236. Early 18th century small Chinese export blue and white deep dish. D. 165mm
\$200 – \$400
237. Early 18th century small Chinese export blue and white deep dish. D. 162mm
\$200 – \$400
238. 18th century Chinese export *famille rose* dish. D. 230mm
\$350 – \$450
239. 18th century Chinese export blue and white lidded teapot with replacement cane handle. W. 265mm
\$350 – \$450
240. Very good pair of 18th century Chinese export blue and white willow pattern saucer dishes. D. 125mm
\$350 – \$450
241. 18th century pair of Chinese export blue and white pagoda pattern tea bowls. D. 85mm
\$200 – \$300
242. Two small 18th century Chinese *famille rose* teabowls. D. 90mm max
\$150 – \$250
243. 18th century Chinese blue and white ginger jar. H. 150mm
\$250 – \$350
244. 19th century Chinese blue and white prunus ginger jar and cover, Kangxi mark to the base. H. 150mm
\$150 – \$250
245. Circa 1900 Chinese blue and white dragon ginger jar and cover, Kangxi mark to the base. H. 150mm
\$400 – \$600
246. Pair of fine 19th century Cantonese *famille rose* dishes, painted with floral and landscape panels. D. 215mm
\$450 – \$550
247. 19th century *famille rose* shaped dish, decorated with figural and landscape panels on a red ground. W. 260mm
\$650 – \$750
248. 19th century Cantonese serving dish with *famille rose* decoration of birds, butterflies and flowers on a gilt ground. W. 300mm
\$900 – \$1200
249. Early 19th century Cantonese celadon and *famille rose* enamels dish. D. 185mm
\$125 – \$150



- 261. Chinese agate seal carved with a frog to the top. H. 53mm
\$100 – \$200
- 262. Chinese Kingfisher jade pendant, carved with a cricket on a ruyi-shaped leaf. H. 50mm
\$800 – \$1200
- 263. Chinese black and red hardstone *lingzhi* and birds pendant. H. 45mm
\$100 – \$200
- 264. Two Chinese jadeite dragon carvings. L. 140mm max
\$300 – \$500
- 265. Three Chinese pale celadon carved jade plaques, and a spinach jade one. H. 65mm max
\$300 – \$500
- 266. Chinese celadon dragon and fruit jade pendant and a celadon *cong*. H. 50mm max
\$200 – \$300



- 267. Two Chinese celadon carved jade pendants, with bird design. H. 53mm max
\$250 – \$350
- 268. Three Chinese celadon and russet jade pendants, carved with bamboo design. H. 50mm max
\$200 – \$300
- 269. Chinese grey celadon jade belt hook, carved with dragon head finial. L. 175mm
\$800 – \$1200
- 270. Two Chinese pale celadon jade pendants, carved with animal design. W. 60mm max
\$250 – \$350
- 271. Three Chinese pale celadon jade pendants. H. 95mm max
\$200 – \$300
- 272. Pair of Chinese celadon jade baluster vases and covers, wood stands. H. 235mm
\$400 – \$600
- 273. Chinese scholar's stone, wood stand. W. 285mm
\$300 – \$500

- 250. 19th century Cantonese celadon and *famille rose* enamels dish, seal mark to the base. D. 255mm
\$350 – \$450
- 251. 19th century Cantonese shaped serving dish. L. 255mm
\$400 – \$800
- 252. Rare 19th century Cantonese *famille rose* circular dish with 'propellor' design. D. 230mm
\$200 – \$300
- 253. 19th century Cantonese lidded teapot, finely painted and gilt with typical decoration of figural and floral panels surrounded by dense scrolling design, possibly matched lid. H. 120mm
\$600 – \$1000
- 254. 19th century Cantonese lidded teapot. H. 135mm
\$200 – \$300

- 255. Circa 1880 Cantonese dish, gilt and enamelled with floral and figural panels. D. 160mm
\$200 – \$400
- 256. 19th century Cantonese *famille rose* circular dish. D. 245mm
\$150 – \$250
- 257. Chinese celadon jade carving of a boy holding an oversized peach. W. 60mm
\$200 – \$300
- 258. Chinese grey and black carved jade pendant of a rooster. H. 580mm
\$100 – \$200
- 259. Pair of Chinese black and grey jade carving of *qilin*. W. 60mm
\$200 – \$400
- 260. Chinese carved crystal rock pendant of a fish amongst waves. H. 75mm
\$200 – \$300

- 274. Jiaqing period (1796 – 1820) Chinese export *famille rose* saucer dish, finely painted to the centre with figures in a palace garden. D. 170mm
\$150 – \$300
- 275. 18th century Chinese export octagonal dish, painted in underglaze blue and *famille rose* enamels with peony sprays and rockwork in a fenced garden. D. 230mm
\$350 – \$450
- 276. 18th century Chinese export *famille rose* Mandarin pattern saucer dish. D. 135mm
\$250 – \$350
- 277. Large 18th century Chinese export underglaze blue and *famille rose* bowl, painted with panels of figures at leisure in palace settings. D. 260mm
\$800 – \$1200

278. Large Qianlong period (1736-1795) Chinese export Mandarin pattern punch bowl, painted in underglaze blue and *famille rose* enamels with various panels of figures at leisure in palace settings. D. 360mm Provenance: Rex Jennings Collection \$3500 – \$5000
279. Large 19th century Cantonese punch bowl, enamelled and painted with panels of long-tailed birds, butterflies and further insects amongst blossoming sprays and fruits, all surrounded by scrolling design. D. 415mm \$4000 – \$6000
280. Fine 19th century Cantonese *famille rose* meat dish and strainer, the strainer and the dish bases inscribed *li xiang ru yi*, 'May your good fortune be as you wish'. W. 420mm \$2000 – \$3000
281. Late 19th century Cantonese *famille rose* punch bowl. D. 265mm \$800 – \$1200
282. 19th century Cantonese *famille rose* punch bowl. D. 235mm \$800 – \$1200
283. Circa 1900 Cantonese *famille rose* tureen and cover. W. 240mm \$800 – \$1200
284. Late 19th century Cantonese *famille rose* deep dish. D. 195mm \$150 – \$250
285. 19th century Cantonese *famille rose* baluster vase. H. 360mm \$800 – \$1200
286. English silver pourer, the sides with a crest of a greyhound seated, inscribed below the spout 'Made from silver taken from the Imperial Summer Palace near Pekin, Oct. 8th 1860', the base stamped with initials E.I (Elizabeth Ivory, active 1860), the name 'Turner's 58 & 59 New Bond St', and London Hallmarks for 1860. W. 170mm \$2000 – \$3000
287. Pair of small 19th century Chinese silver baskets with pierced dragon and bamboo decoration, marks of Cumwo, wood stands. W. 150mm \$2000 – \$3000
288. Circa 1900 Chinese export silver pierced basket, with peony and bamboo design, marks of Luen Wo. H. 150mm \$500 – \$800
289. 19th century Chinese silver marrow scoop with bamboo design, marks of Cumwo. L. 210mm \$150 – \$250
290. Chinese silver bracelet inset with panels with calligraphy lines, 'Silver' and 'China' marks. L. 160mm \$300 – \$500
291. Chinese gilt silver brooch with carved lapis inset, 'Silver' mark. H. 53mm \$300 – \$500

The following 63 lots come from a long standing collection assembled over the last three decades in New Zealand and England

292. Han dynasty (206 BC-220 AD) Chinese green glazed ceramic food ladle. W. 190mm \$200 – \$300
293. Han dynasty (206 BC – 220 AD) Chinese Sichuan pottery figure of an attendant. H. 440mm \$800 – \$1200
294. Pair of Northern dynasties (420-580) Chinese painted pottery models of drummers. H. 220mm \$300 – \$500
295. Tang dynasty (618-907) Chinese painted pottery model of a rooster. H. 170mm \$150 – \$300
296. Tang dynasty (618-907) Chinese Changsha bird shaped ewer, covered with cream, brown and green glaze. W. 125mm \$500 – \$800
297. Tang dynasty (618-907) Chinese marble ware bowl. D. 148mm \$800 – \$1200
298. Particularly large and elegant Tang dynasty (618-907) Chinese painted pottery figure of a court lady, modelled as wearing long robes falling in heavy folds, holding a circular mirror in her left hand and re-arranging her full coiffure, the rounded face painted with thick eyebrows and carved with rosebud mouth. H. 530mm Provenance: previously sold at Christie's Amsterdam, 3 May 2005, lot 203 \$4000 – \$6000
299. Large Tang dynasty (618-907) Chinese *sancai* glazed pottery figure of a groom, modelled with hands positioned as if holding reins, dressed in a knee-length tunic. H. 595mm \$2000 – \$3000
300. 9th/10th century Chinese Yue celadon bowl. D. 140mm \$150 – \$250
301. Northern Song dynasty (960-1127) Yaozhou celadon footed bowl. D. 143mm \$150 – \$250
302. Song dynasty (960-1279) Chinese *qingbai* make-up box and cover, the interior with three small bowls. D. 100mm \$200 – \$300
303. Song dynasty (960-1279) Chinese *qingbai* moulded bowl with foliate rim. D. 127mm \$200 – \$300
304. Song dynasty (960-1279) Chinese celadon bowl with carved design. D. 177mm \$200 – \$300
305. Small Song dynasty (960-1279) Chinese celadon dish with moulded decoration of two fish amongst waves to the centre. D. 130mm \$200 – \$300
306. 15th/16th century Korean brushed slip celadon bowl. D. 140mm \$100 – \$200
307. Early Ming dynasty (1368-1644) Chinese white glazed dish with foliate rim, the glaze probably of *tianbai* type. D. 180mm \$700 – \$1200
308. Small 13th/14th century Chinese Cizhou enamelled figure and basket. H. 60mm \$300 – \$500
309. Small early Ming dynasty (1368-1644) Chinese celadon dish with shaped rim. D. 133mm \$200 – \$300
310. Large Wanli period (1573-1620) Chinese blue and white Kraak bowl. D. 265mm \$1000 – \$2000
311. Wanli/Chongzhen period (1573-1644) Chinese blue and white Kraak dish. D. 305mm \$1200 – \$1800
312. Ming dynasty (1368-1644) Chinese Swatow celadon charger with stylised incised decoration. D. 330mm \$800 – \$1200
313. Rare large Ming dynasty (1368-1644) Chinese Swatow slip-decorated blue ground bowl. D. 380mm \$4000 – \$6000
314. Rare large Ming dynasty (1368-1644) Chinese Swatow blue glazed bowl. D. 385mm \$3000 – \$4000
315. Circa 1700 Chinese Dehua *Blanc de Chine* porcelain model of a Buddhist lion. H. 345mm \$1500 – \$2500
316. Rare late 17th century Chinese Dehua *Blanc de Chine* mug, after a German model. H. 90mm \$800 – \$1200
317. 16th/17th century Chinese Dehua *Blanc de Chine* censer. D. 112mm \$800 – \$1200
318. Late 19th/early 20th century Chinese biscuit vase with applied decoration of horses amongst trees, Chenghua seal mark to the base. H. 220mm \$2500 – \$3500
319. Qing Dynasty (1644-1911) Chinese Imperial Rank Badge with the five-clawed Dragon of Heaven, probably of Qianlong period (1736-1795), silk, couched silver and gold wrapped thread, worn on the front of a formal surcoat. D. 290mm, framed and glazed \$3000 – \$5000



320. Qing dynasty (1644-1911) Chinese Imperial Rank Badge with the five-clawed Dragon of Heaven, probably of late Qianlong period (1736-1795), silk, couched gold wrap thread and silk thread, worn on the back of a formal surcoat. D. 275mm, framed and glazed \$3000 – \$5000
321. 19th century Chinese Child's Rank Badge with the Wild Goose (4th ranked Civil), silk, couched silver and gold wrapped thread and satin stitch, worn on the back of a formal surcoat. 210x195mm, framed and glazed \$2000 – \$3000
322. 19th century Chinese Imperial *Pi Ling* or Collar with five clawed dragons, probably of Daoguang period (1821-1850) silk, gold wrapped thread and satin stitch, worn over formal dress. L. 820mm, framed and glazed \$2000 – \$3000
323. Chinese hardwood hanging display cabinet. H. 840mm \$200 – \$300
324. Small 19th century Chinese Canton enamel *famille rose* circular box and cover, Qianlong mark to the base. D. 57mm \$300 – \$400
325. Small 19th century Chinese Canton enamel blue and white circular box and cover, Qianlong mark to the base. D. 57mm \$300 – \$400
326. 19th century Chinese carved crystal rock censer and cover. H. 95mm \$500 – \$800
327. 19th century Chinese celadon jade snuff bottle, carved as an elongated pear shaped vase. H. 70mm \$600 – \$800
328. Chinese grey celadon jade snuff bottle carved as a cicada on a leafy fruit. W. 60mm \$300 – \$500
329. Chinese russet jade snuff bottle, carved with a climbing *chilong* dragon. W. 70mm \$800 – \$1200
330. Chinese grey celadon jade snuff bottle. H. 45mm \$300 – \$500
331. Chinese green celadon jade snuff bottle, carved with a frog on a lotus leaf, ivory stopper. H. 53mm \$200 – \$300
332. Circa 1900 Chinese russet celadon jade pebble snuff bottle. H. 55mm \$800 – \$1200
333. Chinese grey celadon jade snuff bottle, incised with archaic script. H. 60mm \$200 – \$400
334. 18th/19th century Chinese jet snuff bottle carved with basket weave pattern. H. 68mm \$500 – \$800
335. Chinese amethyst carved snuff bottle and stopper. H. 85mm \$600 – \$800
336. Chinese smoky quartz carved snuff bottle. H. 55mm \$200 – \$300
337. Chinese fossiliferous limestone snuff bottle. H. 60mm \$500 – \$800
338. Large 19th century Chinese grey agate snuff bottle, wood stand. H. 60mm \$200 – \$300
339. Chinese agate carved snuff bottle, probably 18th century. H. 50mm \$500 – \$800
340. Chinese banded agate snuff bottle with carved *taotie* mask handles. H. 50mm \$400 – \$800
341. Chinese glass in imitation of agate snuff bottle. H. 55mm \$200 – \$300
342. 19th century Chinese *famille rose* porcelain snuff bottle with figural design. H. 80mm \$100 – \$200
343. 19th century Chinese *famille rose* porcelain snuff bottle with figural design. H. 80mm \$100 – \$200
344. 19th century Chinese *famille rose* porcelain snuff bottle, painted with roosters. H. 75mm \$100 – \$200
345. 19th century Chinese *famille rose* porcelain snuff bottle, painted with a tiger. H. 75mm \$100 – \$200
346. Chinese underglaze blue and copper red porcelain snuff bottle, Yongzhen mark to the base. H. 75mm \$500 – \$800
347. 19th century Chinese underglaze blue and *café au lait* glazed porcelain snuff bottle. H. 75mm \$200 – \$300
348. Late 19th/early 20th century Chinese underglaze blue and *café au lait* glazed porcelain snuff bottle. H. 75mm \$200 – \$300
349. 19th century Chinese underglaze brown and blue porcelain snuff bottle, painted with basket waves, a spiral to the base. H. 55mm \$200 – \$300
350. 19th century Chinese underglaze blue and enamel porcelain snuff bottle. H. 75mm \$500 – \$800
351. Chinese Peking opaque glass snuff bottle with silver mounts with dragon design. H. 70mm \$150 – \$250
352. Chinese Peking opaque yellow glass snuff bottle of double gourd shape. H. 65mm \$100 – \$200
353. 20th century Chinese mother of pearl snuff bottle. H. 63mm \$100 – \$200
354. 20th century Chinese hornbill snuff bottle, carved as a leaping carp. H. 80mm \$300 – \$600
355. Small Chinese celadon jade snuff bottle. H. 45mm \$300 – \$600
356. Chinese reverse painted glass snuff bottle, by Yun Chuan, 1997. H. 80mm \$500 – \$800
357. Bob C. Stevens, *The Collector's Book of Snuff Bottles*, Watherhill, New York, limited reprint edition 1994, hardcover and case \$50 – \$100
358. Small Qianlong mark and period (1736-1795) Chinese blue and white sectioned dish. D. 105mm \$200 – \$400
359. Large Qianlong mark and period (1736-1795) underglaze blue and copper red bowl, painted with deer in a landscape with pines, bats and *lingzhi* mushrooms. D. 205mm \$1000 – \$1500
360. Very fine Jiaqing mark and period (1796-1820) Chinese green-ground *famille rose* lobed tea-tray, the interior with a cartouche with gilt borders inscribed with a long poem in praise of good tea, dated to Jiaqing *dingsi* year (1797), the sides delicately enamelled with meandering lotus and other floral scrolls, all reserved on a pale-green ground, raised on four gilt bracket feet on wood stand. W. 158mm
Provenance: Errol Willis Collection; Rex Jennings Collection.
The poem may be found on a small number of Jiaqing-period teapots and tea-trays, as it praises well-prepared tea. S.W. Bushell translates the poem in *Oriental Ceramic Art* (London, 1981 (1896), p. 239) as:

‘Finest tribute tea of the first picking
And a bright full moon prompt a line of verse.
A lively fire glows in the bamboo stove,
The water is boiling in the stone griddle,
Small bubbles rise like ears of fish or crab.
Of rare Ch’i-ch’iang tea, rolled in tiny balls,
One cup is enough to lighten the heart,
And dissipate the early winter chill.’

A similar green-ground quatrefoil tea-tray inscribed with the same poem can be found in the collection of the National Palace Museum, Taiwan, as illustrated by Liu Liang-yu, *A Survey of Chinese Ceramics*, vol. 5, Taiwan, 1991, p. 256.
\$10 000 – \$30 000
361. Republic period (1912-1949) Chinese *famille rose* vase, the base with the seal mark *Shi lu*, ‘Stone Cottage’, used by Liang Duishi (active 1920-37). H. 215mm \$800 – \$1200

362. Republic period (1912-1949) Chinese *famille rose* plaque by Wang Qi (1884-1937), depicting a war lord reading a report with an attendant in a camp tent, with two seals of the artist. 395x258mm \$8000 – \$10 000
363. Pair of early 20th century Chinese *famille rose* phoenix, modelled as standing on a rock in front of peony sprays, with wood stands. H. 305mm \$2000 – \$3000
364. Pair of early 20th century Chinese *famille verte* models of parrots. H. 230mm \$300 – \$500
365. Large Chinese *famille verte* ceramic figure of a *Luohan*, possibly Republic period (1911-1949). H. 470mm \$700 – \$1000
366. 20th century Chinese *famille rose* model of Budai, the base marked *Fujian huiguan*, 'Fujian Provincial Guild Hall'. H. 210mm \$400 – \$800
367. Chinese *famille rose* model of the Immortals Hehe Erxian, seal mark to the base. H. 225mm \$600 – \$800
368. Early 20th century Chinese *famille rose* lidded box. H. 143mm \$600 – \$800
369. Small Chinese Yixing teapot by Li Bifang (born 1939), seal mark to cover and interior. H. 65mm \$500 – \$800
370. Circa 1890 Chinese ivory tusk vase, carved in high relief with birds amongst chrysanthemum, peony, prunus and bamboo plants underneath lines of calligraphy, Qianlong seal mark to the base. H. 270mm \$1000 – \$2000
371. 19th century Chinese ivory card case, finely carved with cartouches of figures at leisure in palace settings and peony sprays. H. 115mm Provenance: Kevin Percy Collection, Hawkes Bay. \$1000 – \$2000
372. 19th century Chinese ivory carved comb. H. 90mm \$250 – \$350
373. 19th century Chinese ivory bangle. D. 85mm \$300 – \$500
374. 19th century Cantonese ivory puzzle ball and stand. H. 280mm \$300 – \$400
375. 19th century Chinese lacquer box and cover, carved with two boys playing. D. 125mm \$100 – \$200
376. Pair of Chinese iron censers cast as Buddhist lions. L. 180mm \$500 - \$800
377. Chinese *zitan* wood rectangular tray. W. 225mm \$350 – \$450

378. Early 20th century Chinese mother of pearl inlaid wooden tray. W. 310mm \$250 – \$350
379. Chinese *hualimu* wood side table. H. 610mm \$200 – \$300
380. Late Qing dynasty (1644-1912) Straits Chinese market hardwood carved chair. H. 980mm \$2000 – \$3000
381. Qing dynasty (1644-1912) Chinese rosewood console table, the shaped top with inset pink variegated marble panel, above a deep ebonised frieze, on four claw and ball carved supports. H. 800mm \$18 000 – \$24 000
382. Early 18th century Chinese export imari dish. D. 230mm \$120 – \$180
383. Unusual early 18th century Chinese export imari dish, painted and gilt with deer amongst bamboo and peony sprays. D. 230mm \$300 – \$500
384. Early 18th century Chinese export imari dish. D. 255mm \$400 – \$600
385. Early 18th century Chinese export imari mug, with replacement pewter handle. H. 150mm \$300 – \$400
386. Second quarter of 18th century Chinese export imari bowl. D. 147mm \$200 – \$400
387. 18th century Chinese export blue and white platter, painted with long tailed birds amongst flowers and rockwork. W. 345mm \$700 – \$800
388. Early/Mid-18th century Chinese export blue and white rockery and flowers plate. D. 235mm \$300 – \$600
389. 18th century Chinese export blue and white dish with peony and still life decoration. D. 230mm \$300 – \$600
390. 18th century Chinese export blue and white octagonal deep dish with rockery design. D. 220mm \$250 – \$350
391. 18th century Chinese export blue and white dish, painted with a river landscape. D. 210mm \$120 – \$180
392. Four various 18th century Chinese export blue and white dishes. D. 230mm max \$150 – \$250
393. Small 18th century Chinese blue and white dragon beaker vase. H. 110mm \$100 – \$200
394. 19th century Chinese prunus beaker vase, Kangxi mark to the base. H. 195mm \$350 – \$450



362



429



438



395. 18th/19th century Chinese export blue and white oval plate, painted with a deer amongst a river landscape. W. 295mm
\$450 – \$550
396. Early 19th century Chinese export blue and white Canton pattern serving dish. W. 235mm
\$250 – \$350
397. Pair of small 19th century Chinese export blue and white Canton pattern dishes. D. 153mm
\$150 – \$200
398. Set of five small 19th century Chinese export blue and white Canton pattern dishes. D. 155mm
\$400 – \$500
399. 19th century Chinese export Canton pattern blue and white dish. D. 230mm
\$80 – \$120
400. 19th century Chinese export blue and white Canton pattern spoon rest. L. 160mm
\$150 – \$250
401. 19th century Chinese export Canton pattern blue and white dish. D. 230mm
\$80 – \$120
402. Qianlong period (1736-1795) Chinese armorial tea bowl, with the arms of Collins. D. 70mm. See D. S. Howard, Chinese Armorial Porcelain, Vol. II, p. 424
\$250 – \$350
403. Qianlong period (1736-1795) small Chinese armorial jug, with the arms of Webber. H. 95mm. See D. S. Howard, Chinese Armorial Porcelain, Vol. II, p.275.
\$600 – \$800
404. Late 18th century Chinese armorial plate, enamelled and gilt to the centre with the initials 'AF' gilt within a shaped panel below a crown surmounted by a half moon. D. 240mm. These arms are probably of Hodges, see D. S. Howard, Chinese Armorial Porcelain, Vol. II, p. 638.
\$200 – \$400
405. Circa 1800's Chinese export helmet-shaped porcelain jug. H. 135mm
\$150 – \$250
406. Early 19th century Chinese export dish with pierced decoration to the rim and gilt blue floral design to the centre. D. 190mm
\$250 – \$350
407. Pair of late 18th century English Lowestoft Chinese-style *famille rose* saucers painted with figures in a palace garden. D. 130mm
\$150 – \$250
408. 19th century French Samson *famille rose* armorial dish, Samson mark to the base. D. 245mm
\$200 – \$300
409. 19th century French Samson *famille rose* armorial dish, Samson mark to the base. D. 240mm
\$200 – \$300
410. 19th century French Samson *famille rose* armorial dish, Samson mark to the base. D. 230mm
\$150 – \$250
411. 19th century French Samson *famille rose* armorial dish, Samson mark to the base. D. 230mm
\$150 – \$250
412. 19th century French Samson *famille rose* armorial dish, Samson mark to the base. D. 230mm
\$150 – \$250
413. 19th century French Samson *famille rose* armorial dish, Samson mark to the base. D. 230mm
\$150 – \$250
414. Guangxu mark and period (1875-1908) Chinese *famille rose millefleur* saucer. D. 145mm
\$200 – \$300
415. Guangxu mark and period (1875-1908) Chinese yellow ground Birthday saucer dish. D. 130mm
\$50 – \$100
416. Guangxu mark and period (1875-1908) Chinese yellow ground Birthday saucer and cup. D. 123mm
\$100 – \$200
417. Small Guangxu mark and period (1875-1908) Chinese yellow ground Birthday dish. D. 175mm
\$150 – \$250
418. Pair of Guangxu mark and period (1875-1908) Chinese yellow ground Birthday dishes. D. 205mm
\$300 – \$400
419. Guangxu mark and period (1875-1908) Chinese yellow ground Birthday saucer dish. D. 138mm
\$100 – \$200
420. Pair of circa 1920's Chinese yellow ground dragon dishes, 'China' stamp to the base. D. 185mm
\$100 – \$150
421. Pair of circa 1920's Chinese yellow ground dragon dishes, 'China' stamp to the base. D. 185mm
\$100 – \$150
422. Large circa 1920's Chinese yellow ground dragon dish, 'China' stamp to the base. D. 243mm
\$100 – \$150
423. Pair of small circa 1920's Chinese yellow ground dragon dishes, 'China' stamp to the base. D. 140mm
\$50 – \$80
424. Chinese Hong-style painting of a cat, by Xu Bei, ink on paper, signed and with seal mark. 390x300mm, framed and glazed
\$600 – \$800
425. Chinese calligraphy painting, ink on paper, with longevity characters, signed and with seal marks. 390x300mm, framed and glazed
\$400 – \$600
426. Chinese painting of crabs, by Qi Lingchi, ink on paper, inscribed and with seal mark. 335x295mm, framed and glazed
\$400 – \$600
427. Chinese painting by Feng Zikai, watercolours on paper, depicting figures flying a kite, inscribed and with seal mark. 350x250mm, framed and glazed
\$500 – \$800
428. He Chong (1807–1883)
The four seasons
set of twelve watercolours on paper, framed and glazed in four panels
310 x 220mm each
\$12 000 – \$24 000
429. Chen Jialing (born 1937)
Red leaves and two bird
watercolours on paper, signed and with seal marks
460x430mm, framed and glazed
Provenance: purchased in Hong Kong in 1989
\$5000 – \$10 000
430. Rare Qianlong period (1736-1795) Chinese glass inlaid and enamel decorated gilt bronze *ruyi* sceptre, finely cast in the form of a gnarled, leafy branch, decorated with green, blue and red enamel leaves, bearing two glass peaches at one end forming the head of the sceptre, the peaches of ruby-red and white jade colours. L. 290mm. Another similar example sold at Christie's, New York, 22 March 2012, lot 1228
\$40 000 – \$60 000
431. Ming dynasty (1368-1644) Chinese bronze figure of Wenchang, the Daoist God of Literature and Culture cast dressed in imperial garments and crown as he sits holding a *hu* tablet in his joined hands, traces of original gilding. H. 270mm
\$2500 – \$3500
432. Sino-Tibetan gilt bronze figure of Buddha Sakyamuni, cast seated in *padmasana*, the hands in *dhyana* and *bhumisparisamudra*, a *kalasa* in his left hand, seal mark to the back. H. 285mm
\$1500 – \$2500
433. Sino-Tibetan gilt bronze figure of Yellow Dzambhala, the Bodhisattva of Wealth and Abundance cast seated in *lalita asana* holding the jewel spouting mongoose in his right hand and the conch shell in his left. H. 285mm
\$1500 – \$2500
434. Yuan dynasty (1279-1368) Chinese cast bronze figure of a guard. H. 225mm
\$500 – \$800
435. Yuan dynasty (1279-1368) Chinese bronze figure of an official, cast standing on a rectangular base and holding a *hu* tablet in his joint hands, traces of original red lacquer and gilding. H. 220mm
\$400 – \$600
436. 19th century Chinese cloisonné bronze model of a recumbent ram. W. 225mm
\$400 – \$600

437. Chinese carved stone stele fragment of the Bodhisattva Guanyin, probably Ming dynasty (1368-1644), reputedly from a cave shrine in Shandong province, carved in low relief with large downcast eyes and serene expression, wearing jewellery, the hair braided in an elaborate manner, surrounded by scrolling clouds. 440x340mm. Provenance: Originally in the Alan Pullar Collection, bought by the current owner in 1967. \$5000 – \$8000
438. Large Majiayao Culture (Neolithic period, mid-3rd millennium BC) Chinese painted pottery jar, Machang or Banshan type. H. 405mm \$4000 – \$6000
439. Large Han dynasty (206 BC-220 AD) Chinese green glazed vase with lug handles. H. 335mm \$1000 – \$1500
440. Ming dynasty (1368-1644) Chinese Swatow blue and white dish. D. 270mm \$600 – \$800
441. Wanli period (1573-1620) Chinese blue and white Kraak porcelain charger, painted to the centre with a stylised phoenix amongst bamboo and peony sprays. D. 370mm \$1500 – \$2500
442. Kangxi period (1662-1722) egg and spinach dish. D. 195mm \$1500 – \$2000
443. Ming dynasty (1368-1644) provincial blue and white dish painted with a deer amongst clouds. D. 185mm \$350 – \$450
444. Circa 1725 Chinese Batavian ware blue and white saucer dish from the Ca Mau shipwreck. D. 110mm \$150 – \$250
445. Ming dynasty (1368-1644) Chinese shipwreck celadon lug-handled jar. H. 170mm \$150 – \$250
446. Two Ming dynasty (1368-1644) Chinese shipwreck blue and white pear-shaped vases. H. 170mm \$200 – \$300
447. Two small Ming dynasty (1368-1644) blue and white jars, and a small pear-shaped vase. H. 135mm max \$150 – \$250
448. Two small Ming dynasty (1368-1644) celadon jars, and a Song dynasty (960-1279) celadon carved dish. H. 100mm \$150 – \$250
449. Two Ming dynasty (1368-1644) shipwreck blue and white bowls, and a Song dynasty (960-1279) celadon bowl. D. 175mm \$150 – \$250
450. Three Ming dynasty (1368-1644) Chinese shipwreck jarlets. H. 65mm max \$50 – \$80

451. Set of five Chinese blue and white spoons. W. 115mm \$30 – \$50
452. Late Qing dynasty (1644-1911) provincial blue and white dish. D. 250mm \$80 – \$100
453. Two similar small Chinese cream glazed dishes with moulded decoration, probably late Qing dynasty (1644-1911). D. 145mm \$100 – \$200
454. Thai Sawankhalok dragon head roof tile, probably 14th/15th century. H. 140mm \$200 – \$400

460. Four rare Guangxu mark and period (1875-1908) shards, three with dragon design. Various sizes. \$200 – \$300
461. Two Ming dynasty (1368-1644) bowl bases and two Kangxi period (1644-1722) ones, with 'reed organ' and 'artemisia leaf' marks; various sizes. \$100 – \$200
462. Nine Ming dynasty (1368-1644) blue and white bowl bases, and a Kangxi period (1662-1722) one, various design, marks and sizes. \$100 – \$200
463. Ten Ming dynasty (1368-1644) blue and white bowl bases, various designs, marks and sizes. \$100 – \$200
464. Ten Ming dynasty (1368-1644) blue and white bowl bases, various designs, marks and sizes. \$100 – \$200
465. Ten Ming dynasty (1368-1644) blue and white bowl bases, various designs, marks and sizes. \$100 – \$200
466. Eleven Ming dynasty (1368-1644) blue and white shards, various designs, marks and sizes; and one Song/Yuan dynasty (13th century) *qingbai* shard. \$100 – \$200
467. Ten Ming dynasty (1368-1644) blue and white bowl bases, with various designs, and sizes, six unmarked, four with illegible marks. \$100 – \$200
468. Seven Ming dynasty (1368-1644) blue and white bowl bases, various designs, marks and sizes. \$70 – \$150
469. Forty-two volumes of the *Transactions of the Oriental Ceramics Society*, London, from Vol. 1, 1921-1922 to Vol. 62 1997-1998 (Vols. 1-5 and 6-10 in the reprinted five volumes bound editions of 1962). Complete volume list available on request. \$1000 – \$2000
470. An almost complete run of the *Transactions of the Oriental Ceramics Society*, London, from vol. 22, 1946-1947, to vol. 32, 1959-1960, ten volumes in total. Complete volume list available on request. Together with the four exhibition catalogues of the Oriental Ceramics Society, including *Celadon Wares*, 1947, *Loan Exhibition of Japanese Porcelain*, 1956, and two copies of *Chinese Ceramic Figures*, 1947.
471. Nine exhibition catalogues of The Oriental Ceramics Society, including *Ming Blue and White Porcelain*, 1946; *Chinese Ceramics Figures*, 1947; *Celadon Wares*, 1947; *Monochrome Porcelain of the Ming and Manchu Dynasties*, 1948; *Chinese Jades*, 1948; *The Arts of the Tang Dynasty*, 1955; *Loan Exhibition of Japanese Porcelain*, 1956 *The Arts of the Sung Dynasty*, 1960, 1 of 500; *Loan Exhibition of the Animal in Chinese Art*, 1968.

A Private Collection of Chinese Porcelain Shards

Comprising over 90 separate underglaze blue pieces, largely bowl bases, many with marks, the collection covers a variety of dates, ranging from the *minyao* (people's wares) of the Ming dynasty, to the *guanyao* (official wares) of the late Qing dynasty. All are kiln wasters, originally collected from the ceramic scrap heaps and refuse pits of the Chinese ceramic capital, Jingdezhen.

The collection illustrates a range of designs, and the different foot rims, with examples of the orange foot and "runny" ink features to be found on many genuine Ming dynasty porcelains.

A full list of marks with translation is available at request.

455. Rare Chinese copper-red decorated porcelain shard of a wine cup, probably late Yuan/early Ming dynasty (14th century), the exterior painted with a galloping horse, unglazed base. D. 55mm \$100 – \$200
456. Ming dynasty (1368-1644) blue and white misfired stemcup, spotted with kiln debris, unglazed base. H. 85mm max \$100 – \$200
457. Fine quality 17th century blue and white phoenix bottle vase lower section, the base with *fu* mark, 'happiness'. H. 120mm \$100 – \$200
458. Three Jiajing mark and period (1522-1566) blue and white bowl bases, and three with Xuande (1426-1435) mark but probably of later Ming dating; various designs, marks and sizes. \$200 – \$300
459. Four rare Daoguang mark and period (1821-1850) shards; and further two blue and white shards, probably of the same period; various sizes. \$200 – \$300



472. Victoria & Albert Museum in association with The Oriental Ceramic Society: *Chinese Translation No. 1: Important Finds of Ancient Chinese Ceramics Since 1949, 1967; Chinese Translation No. 3: Report on the Investigation of Kiln Sites of Ju Type Ware and Chun Ware in Lin-Ju Hsien, Honan, 1968; Chinese Translation no. 4: Investigation of the Ting Ware Kiln Site at Chien-Tzu Ts'un, Hopei, 1968*

A Private Collection of Peking Glass

In 1696 the Chinese Kangxi emperor established the Imperial glass factory in Peking (Beijing). Under the initial direction of Kilian Stumpf (1655-1720), a Jesuit missionary, throughout the 18th century the factory produced exquisite overlay glass for the palace, giving rise to the name Peking glass. Towards the end of the 18th century, Peking glass became available to the general public, and a range of utilitarian wares including tea bowls, wine bowls, saucers, snuff bottles etc were produced in a diversity of colours. It also started to be exported, primarily to the United States.

ART+OBJECT is pleased to offer in this sale one of the most extensive private collections of Peking glass in New Zealand.

- 473. Chinese Peking 'white jade' glass bowl, wood stand. D. 115mm
\$500 – \$800
- 474. Chinese Peking yellow carved glass bowl, the base inscribed 'China'. D. 110mm
\$200 – \$300
- 475. Two Chinese Peking glass bowls with flared rim, of blue and pink colours on wood stands. D. 130mm
\$200 – \$300

- 476. Chinese Peking opaque yellow glass tea cup. D. 88mm
\$500 – \$800
- 477. Chinese Peking light blue glass tea cup, the base inscribed 'China'. D. 88mm
\$120 – \$160
- 478. Matched pair of Chinese Peking pink glass tea cups, one with 'China' inscribed to the base. D. 87mm
\$200 – \$300
- 479. Chinese Peking opaque yellow glass tea cup on wood stand. D. 88mm
\$500 – \$800
- 480. Chinese Peking green glass tea cup. D. 85mm
\$100 – \$200
- 481. Three Chinese Peking opaque green glass bowls. D. 120mm
\$300 – \$500
- 482. Chinese Peking opaque blue glass bowl. D. 115mm
\$400 – \$600
- 483. Chinese Peking blue-overlay white carved glass bowl, the base inscribed 'China'. D. 112mm
\$150 – \$300
- 484. Chinese Peking blue glass model of the Bodhisattva Guanyin. H. 270mm
\$300 – \$500
- 485. Pair of Chinese Peking opaque celadon glass vases on wood stands. H. 155mm
\$600 – \$800
- 486. Chinese Peking opaque light blue pear-shaped vase. H. 225mm
\$150 – \$300
- 487. Chinese Peking glass octagonal bottle vase, of deep ruby-red colour suffused with gold flakes to the inside. Qianlong seal mark to the base and probably of the period, wood stand. H. 245mm
\$2500 – \$3500

- 488. Large Chinese Peking pink glass bowl. D. 165mm
\$250 – \$350
- 489. Chinese Peking ruby red glass bowl. D. 120mm
\$200 – \$400
- 490. Large Chinese Peking opaque red glass bowl, wood stand. D. 218mm
\$800 – \$1200
- 491. Set of five Peking opaque green glass cups with metal mounts and saucers. D. 100mm max
\$250 – \$500
- 492. Two Chinese Peking glass cups with metal mounts, saucers and metal spoons, of blue and green colours, the blue with 'China' inscribed to the bases. D. 110mm max
\$160 – \$260
- 493. Chinese Peking yellow glass cup with metal mounts and saucer. D. 18mm
\$50 – \$80
- 494. Three various Chinese Peking glass dishes, two purple and one light blue, the latter with 'China' inscribed to the base. D. 200mm max
\$150 – \$300
- 495. Three Chinese Peking opaque green glass plates, together with a cup with metal mounts and saucer. D. 198mm
\$150 – \$250
- 496. Two Chinese Peking carved glass snuff bottles, of yellow and pink colours. H. 85mm max
\$50 – \$80
- 497. Large Chinese Peking opaque yellow glass bottle vase. H. 270mm
\$500 – \$800
- 498. Large Chinese Peking opaque yellow glass *ding* censer, the sides carved with *taotie* masks. W. 260mm
\$800 – \$1200



499. Chinese Peking opaque green glass salt cellar, within a pewter footed cup and cover. The glass, D. 57mm
\$100 – \$200
500. Chinese Peking opaque green and white glass necklace, and another necklace.
\$100 – \$200
501. Large pair of late 19th/early 20th century Chinese *Blanc de Chine* Buddhist lions. H. 410mm
\$500 – \$800
502. Late Qing dynasty (1644-1911) Chinese *famille rose* vase, painted with a scene from 'The Eight Immortals Cross the Sea' legend, Kangxi mark to the base. H. 400mm
\$450 – \$600
503. Chinese *famille rose* dish, painted with Buddhist symbols, Guangxu mark to the base. D. 195mm
\$1200 – \$1500
504. Chinese yellow-ground gourd shaped vase, painted with cranes flying amongst clouds, Yongzhen mark to the base. H. 245mm
\$2500 – \$3500
505. Chinese decorative *famille verte* plaque. W. 325mm
\$800 – \$1200
506. Early 20th century Chinese rooster plate. D. 215mm
\$150 – \$200
507. Early 20th century Chinese coral ground and blossoms saucer, Qianlong mark to the base. D. 140mm
\$200 – \$300
508. Early 20th century Chinese dragon plate. D. 250mm
\$125 – \$145
509. Early 20th century Chinese export *famille rose* one-hundred-butterflies pattern saucer. D. 135mm
\$50 – \$100
510. Early 20th century Chinese *famille rose* dish, painted with panels of *fu* characters (happiness), long tailed birds, insects and blossoming sprays. D. 23mm
\$250 – \$350
511. Pair of Chinese export turquoise glazed porcelain seated cats, possibly Republic period (1911-1949). H. 200mm
\$250 – \$350
512. Large 20th century Chinese turquoise glazed porcelain cat, together with three smaller turquoise glazed cats and a pair of glazed ceramic ducks. H. 280mm max
\$100 – \$200
513. Small Chinese peachbloom glazed baluster vase, Kangxi mark to the base. H. 208mm
\$400 – \$600
514. Early 20th century *wucui* vase, painted with Beijing Opera figures. H. 430mm
\$1200 – \$1800
515. 20th century Chinese *famille noir* vase, painted with birds amongst prunus and pine trees. H. 415mm
\$1400 – \$1800
516. Small Chinese baluster vase, painted with flowers and calligraphy lines. H. 255mm
\$200 – \$300
517. Chinese *famille rose* teabowl, painted with Taoist figures, Guangxu mark. D. 88mm
\$800 – \$1200
518. Small Chinese cream glazed handled bottle vase. H. 140mm
\$200 – \$300
519. Small Japanese cloisonné lidded vase. H. 145mm
\$600 – \$1200
520. Japanese wireless cloisonné censer and cover. H. 95mm
\$400 – \$600
521. 20th century Japanese cloisonné jewellery cabinet. H. 100mm Provenance: Kevin Percy Collection, Hawkes Bay.
\$800 – \$1200
522. Meiji period (1868-1912) Japanese ivory netsuke. W. 35mm
\$100 – \$200
523. Early 20th century Japanese ivory netsuke of a samurai. H. 50mm
\$100 – \$200
524. Meiji/Taisho period (1868-1926) Japanese ivory *okimono* of an elderly man, signed. H. 230mm
\$800 – \$1200
525. Late Meiji period (1868-1912) Japanese wood, lacquer and shibayama-style decorated bazique games marker. W. 95mm
\$300 – \$500
526. Meiji period (1868-1912) Japanese bronze censer and cover, the body cast with dragons, the cover with a boy carrying a decorative ball. H. 300mm
\$1000 – \$1500
527. Large Meiji period (1868-1912) Japanese bronze model of a tiger, cast striding forwards with ferocious expression and outstretched tail, signed 'Seiko'. L. 600mm
\$3000 – \$5000
528. Large Meiji period (1868-1912) Japanese bronze model of an elephant, naturalistically cast striding forward with trunk raised, signed 'Genryusai Seiya', wood stand. L. 520mm
\$1800 – \$2800
529. Meiji period (1868-1912) Japanese bronze model of Kintaro on the bear, signed. H. 240mm
\$1500 – \$2500

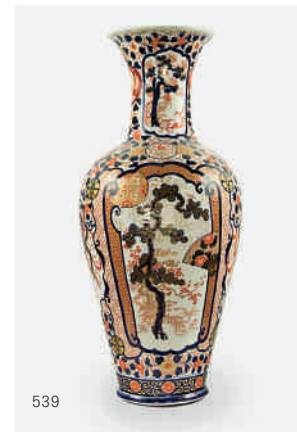
Japanese Art

530. Pair of Meiji period (1868-1912) Japanese bronze seated lions, inset eyes, signed 'Omori Mitsumoto'. H. 145mm
\$1200 – \$1800
531. Meiji period (1868-1912) Japanese bronze model of a seated hare, signed. L. 140mm
\$700 – \$1000
532. Meiji period (1868-1912) Japanese bronze group of a crocodile and a tiger fighting, inset eyes, signed 'Mitsumoto', wood stand. W. 260mm
\$2000 – \$3000
533. Meiji period (1868-1912) Japanese bronze model of a crayfish, unsigned. L. 225mm
\$300 – \$500
534. Meiji period (1868-1912) Japanese bronze model of a crab, unsigned. W. 187mm
\$250 – \$350
535. Meiji period (1868-1912) Japanese bronze model of an elephant, with inset bone tusks, signed Tamamizu. L. 255mm
\$500 – \$800
536. Meiji period (1868-1912) Japanese bronze model of an elephant, with inset ivory tusks, signed, 'Japan' stamp. L. 210mm
\$500 – \$800
537. Meiji period (1868-1912) Japanese bronze model of two tigers attacking an elephant, with inset ivory tusks, signed. L. 240mm
\$800 – \$1200
538. Rare Meiji period (1868-1912) Japanese *shunga* scroll (pillow book), Utagawa School. The twelve *shunga* images hand painted on silk laid on cloth, each depicting couples in erotic embraces with accompanying Kanji text, complete and in superb condition. *Shunga*, the Japanese term for erotic art has its origins in China. It is believed that *shunga* images were initially inspired by illustrations in Chinese medical manuals and by the Tang dynasty erotic painter Zhou Fang. Additionally, twelve images are relevant as this pertains to the sets of twelve scrolls depicting the twelve sexual acts that the crown prince had to carry out to balance the yin/yang energy. This scroll is unsigned which is typical of *shunga* works post 1722. Complete scrolls, like this one, are rare as many were broken up and the images sold individually.
Each image 200 x 290mm
Provenance: Kevin Percy Collection, Hawkes Bay.
\$5000 – \$6000
539. Large Meiji period (1868-1912) Japanese imari vase, enamelled and gilt with panels of birds and pines surrounded by stylised floral design. H. 765mm
\$3000 – \$4000
540. Large Meiji period (1868-1912) Japanese imari vase and cover, painted with panels of birds and flowers, the cover with a *shishi* lion finial. H. 550mm
\$2000 – \$3000

541. Large Meiji period (1868-1912) Japanese imari trumpet vase with flaring foliate rims, decorated with dense floral design. H. 390mm
\$1000 – \$2000
542. Fine quality 19th century Japanese Satsuma bowl, decorated to the interior with the one thousand butterfly pattern, Satsuma mark to the base. D. 125mm. Provenance: Kevin Percy Collection, Hawkes Bay.
\$800 – \$1200
543. Large late Meiji/Taisho (1868-1926) Japanese Satsuma vase in the manner of Yabu Meizan, decorated with figural and landscape panels, Satsuma mark to the base. H. 465mm
\$2500 – \$3500
544. Polychrome ceramic rooster group, possibly Japanese Kutani. H. 210mm
\$250 – \$350
545. A collection of four pieces of Japanese Kutani porcelain, including two small vases, a cup and saucer and a small water pot, all marked. H. 160mm
\$50 – \$80
546. Pair of Meiji period (1868-1912) polished bronze vases. H. 215mm
\$100 – \$200

Further Chinese and Asian Ceramics and Works of Art

547. Pair of small Indo-Persian polished bronze pouring vessels, with tiger-shaped handles. H. 100mm
\$100 – \$200
548. Chinese decorative Qianlong-style blue and white vase. H. 385mm
\$250 – \$350
549. Two Ming-style slip-decorated stemcups, Xuande mark to bases. H. 85mm
\$200 – \$300
550. Large Chinese decorative *famille rose* baluster vase. H. 585mm
\$100 – \$200
551. Large pair of Chinese Ming-style *wucai* dragon vases, Wanli mark. H. 570mm
\$150 – \$350
552. Chinese Ming-style *wucai* jar and cover, painted with ducks in a lotus pond, Wanli mark. H. 315mm
\$100 – \$200
553. Chinese Yixing teapot and cover, with seal marks. W. 160mm
\$50 – \$100
554. Chinese Yixing teapot and cover, with seal marks. W. 170mm
\$50 – \$100
555. Two Chinese Yixing pottery teapots and covers, both with marks. W. 190mm max
\$30 – \$50



539



542

556. Two Chinese Yixing pottery teapots and covers, both with marks. W. 165mm max
\$30 – \$50
557. Two Chinese ceramic figures of Immortals, Shiwán or Yixing pottery, wood stands. H. 150mm
\$30 – \$50
558. 19th century Chinese painted wood figure of a magistrate. H. 225mm
\$150 – \$250
559. 19th century Chinese painted wood figure of a magistrate. H. 220mm
\$150 – \$250
560. Chinese lacquered wood carved figure of Guandi. H. 220mm
\$250 – \$350
561. Pair of 19th century Chinese polished bronze *zun* vases. H. 270mm
\$200 – \$300
562. Chinese bronze phoenix vase, Chenghua mark. H. 245mm
\$100 – \$200
563. Large late 19th/early 20th century Chinese bone opium scale, with violin shaped wood case, together with two miniature bronze Buddha and a bull. L. 380mm
\$50 – \$100
564. Chinese boxed writing set
\$50 – \$100
565. Group of twenty six ancient Chinese coins, possibly Han to Song dynasty
\$30 – \$50
566. A Nepali, Tibetan style hand-painted Thangka depicting Buddha Shakyamuni with scenes from his life. 710 x 530mm
\$100 – \$200

Conditions of sale

Please note: it is assumed that all bidders at auction have read and agreed to the conditions described on this page.
ART+OBJECT directors are available during the auction viewing to clarify any questions you may have.

1.

Registration: Only registered bidders may bid at auction. You are required to complete a bidding card or absentee bidding form prior to the auction giving your correct name, address and telephone contact + supplementary information such as email addresses that you may wish to supply to ART+OBJECT

2.

Bidding: The highest bidder will be the purchaser subject to the auctioneer accepting the winning bid and any vendor's reserve having been reached. The auctioneer has the right to refuse any bid. If this takes place or in the event of a dispute the auctioneer may call for bids at the previous lowest bid and proceed from this point. Bids advance at sums decreed by the auctioneer unless signaled otherwise by the auctioneer. No bids may be retracted. The auctioneer retains the right to bid on behalf of the vendor up to the reserve figure.

3.

Reserve: Lots are offered and sold subject to the vendor's reserve price being met.

4.

Lots offered and sold as described and viewed: ART+OBJECT makes all attempts to accurately describe and catalogue lots offered for sale. Notwithstanding this neither the vendor nor ART+OBJECT accepts any liability for errors of description or faults and imperfections whether described in writing or verbally. This applies to questions of authenticity and quality of the item. Buyers are deemed to have inspected the item thoroughly and proceed on their own judgment. The act of bidding is agreed by the buyer to be an indication that they are satisfied on all counts regarding condition and authenticity.

5.

Buyers premium: The purchaser by bidding acknowledges their acceptance of a buyers premium of 15% + GST on the premium to be added to the hammer price in the event of a successful sale at auction.

6.

ART+OBJECT is an agent for a vendor: A+O has the right to conduct the sale of an item on behalf of a vendor. This may include withdrawing an item from sale for any reason.

7.

Payment: Successful bidders are required to make full payment immediately post sale – being either the day of the sale or the following day. If for any reason payment is delayed then a 20% deposit is required immediately and the balance to 100% required within 3 working days of the sale date. Payment can be made by Eftpos, bank cheque or cash. Cheques must be cleared before items are available for collection. Credit cards are not accepted.

8.

Failure to make payment: If a purchaser fails to make payment as outlined in point 7 above ART+OBJECT may without any advice to the purchaser exercise its right to: a) rescind or stop the sale, b) re offer the lot for sale to an underbidder or at auction. ART+OBJECT reserves the right to pursue the purchaser for any difference in sale proceeds if this course of action is chosen, c) to pursue legal remedy for breach of contract.

9.

Collection of goods: Purchased items are to be removed from ART+OBJECT premises immediately after payment or clearance of cheques. Absentee bidders must make provision for the uplifting of purchased items (see instructions on the facing page)

10.

Bidders obligations: The act of bidding means all bidders acknowledge that they are personally responsible for payment if they are the successful bidder. This includes all registered absentee or telephone bidders. Bidders acting as an agent for a third party must obtain written authority from ART+OBJECT and provide written instructions from any represented party and their express commitment to pay all funds relating to a successful bid by their nominated agent.

11.

Bids under reserve & highest subject bids: When the highest bid is below the vendor's reserve this work may be announced by the auctioneer as sold 'subject to vendor's authority' or some similar phrase. The effect of this announcement is to signify that the highest bidder will be the purchaser at the bid price if the vendor accepts this price. If this highest bid is accepted then the purchaser has entered a contract to purchase the item at the bid price plus any relevant buyers premium.

Important advice for buyers

The following information does not form part of the conditions of sale, however buyers, particularly first time bidders are recommended to read these notes.

A.

Bidding at auction: Please ensure your instructions to the auctioneer are clear and easily understood. It is well to understand that during a busy sale with multiple bidders the auctioneer may not be able to see all bids at all times. It is recommended that you raise your bidding number clearly and without hesitation. If your bid is made in error or you have misunderstood the bidding level please advise the auctioneer immediately of your error – prior to the hammer falling. Please note that if you have made a bid and the hammer has fallen and you are the highest bidder you have entered a binding contract to purchase an item at the bid price. New bidders in particular are advised to make themselves known to the sale auctioneer who will assist you with any questions about the conduct of the auction.

B.

Absentee bidding: ART+OBJECT welcomes absentee bids once the necessary authority has been completed and lodged with ART+OBJECT. A+O will do all it can to ensure bids are lodged on your behalf but accepts no liability for failure to carry out these bids. See the Absentee bidding form in this catalogue for information on lodging absentee bids. These are accepted up to 2 hours prior to the published auction commencement.

C.

Telephone bids: The same conditions apply to telephone bids. It is highly preferable to bid over a landline as the vagaries of cellphone connections may result in disappointment. You will be telephoned prior to your indicated lot arising in the catalogue order. If the phone is engaged or connection impossible the sale will proceed without your bidding. At times during an auction the bidding can be frenetic so you need to be sure you give clear instructions to the person executing your bids. The auctioneer will endeavour to cater to the requirements of phone bidders but cannot wait for a phone bid so your prompt participation is requested.

D.

New Zealand dollars: All estimates in this catalogue are in New Zealand dollars. The amount to be paid by successful bidders on the payment date is the New Zealand dollar amount stated on the purchaser invoice. Exchange rate variations are at the risk of the purchaser.

Absentee bid form

Auction No. 63

New Collectors Art
 5 March 2013
 (lots 1 – 211)

Asian Art
 6 March 2013
 (lots 220 – 566)

Modern Design and Decorative Arts
 7 March 2013
 (lots 570 – 877)

This completed and signed form authorizes ART+OBJECT to bid on my behalf at the above mentioned auction for the following lots up to prices indicated below. These bids are to be executed at the lowest price levels possible.

I understand that if successful I will purchase the lot or lots at or below the prices listed on this form and the listed buyers premium for this sale (15%) and GST on the buyers premium. I warrant also that I have read and understood and agree to comply with the conditions of sale as printed in the catalogue.

Lot no.	Description	Auction Date	Bid maximum (New Zealand dollars)
_____	_____	_____	_____
_____	_____	_____	_____
_____	_____	_____	_____
_____	_____	_____	_____
_____	_____	_____	_____
_____	_____	_____	_____
_____	_____	_____	_____
_____	_____	_____	_____
_____	_____	_____	_____
_____	_____	_____	_____
_____	_____	_____	_____
_____	_____	_____	_____
_____	_____	_____	_____
_____	_____	_____	_____
_____	_____	_____	_____

Payment and Delivery ART+OBJECT will advise me as soon as is practical that I am the successful bidder of the lot or lots described above. I agree to pay immediately on receipt of this advice. Payment will be by cash, cheque or bank transfer. I understand that cheques will need to be cleared before goods can be uplifted or dispatched. I will arrange for collection or dispatch of my purchases. If ART+OBJECT is instructed by me to arrange for packing and dispatch of goods I agree to pay any costs incurred by ART+OBJECT. Note: ART+OBJECT requests that these arrangements are made prior to the auction date to ensure prompt delivery processing.

Please indicate as appropriate by ticking the box: PHONE BID ABSENTEE BID

MR/MRS/MS: _____ SURNAME: _____

POSTAL ADDRESS: _____

STREET ADDRESS: _____

BUSINESS PHONE: _____ MOBILE: _____

FAX: _____ EMAIL: _____

Signed as agreed: _____

To register for Absentee bidding **this form must be lodged with ART+OBJECT by 2pm** on the day of the published sale time in one of three ways:

1. Fax this completed form to ART+OBJECT +64 9 354 4645
2. Email a printed, signed and scanned form to: info@artandobject.co.nz
3. Post to ART+OBJECT, PO Box 68 - 345 Newton, Auckland 1145, New Zealand

Artist's Index

New Collectors Art
Auction No. 63

- Aberhart, Laurence 62, 63
Albrecht, Gretchen 119
Apple, Billy 192
Bagnall, Catherine 110
Baloghy, George 14, 88
Bambury, Stephen 17
Binney, Don 54, 140
Bizumic, Mladen 22
Blackman, Charles 99
Blair, Philpa 153
Boros, A. Louis 176
Bradley, Marissa 102
Brown, Helen 130
Brown, Nigel 79, 80, 112, 113, 167
Calvert, Daniel 148
Cauchi, Ben 73
Chance, George 69, 70
Chilcott, Gavin 85, 86, 132, 194
Clairmont, Philip 143
Cleavin, Barry 183, 184, 185
Cleverley, Peter 122
Conrad, Christina 103, 104, 105
Cotton, Shane 40, 41
Creed, Martin 20
Dashper, Julian 15, 138
Daw, Bing 170
Dawson, Neil 30, 31
de Lautour, Tony 23
de Saint Phalle, Nicky 100
Dolezel, Jenny 150, 181
Drawbridge, John 187
Driver, Neil 197
Dutch, Ted 182, 193
Ellis, Robert 54
Esling, Simon 135
Feu'u, Fatu 125
Fomison, Tony 118, 129
Frizzell, Dick 97, 116, 121
George, Darryn 52
Hammond, Bill 8, 9, 51, 117
Hanly, Pat 54, 77, 78, 133, 188
Harrison, Michael 169
Hartigan, Paul 1
Heaphy, Chris 39, 168
Helmore, Des 134
Hemer, Andre 165
Hickin, Roger 142
Hipkins, Gavin 125, 126, 127
Hollins, Anna 152
Holmwood, John 13
Horsley, Jean 197
Hotere, Ralph 12, 53, 54, 115, 127
Hunter, Alexis 171
Hurley, Gavin 128, 144
Illingworth, Michael 54, 208
Jacks, Robert 154
Kahukiwa, Robyn 81, 120
Killeen, Richard 50, 101, 131
Knight Turner, Dennis 200, 201
Lane, Tony 180
Lela'ulu, Nanette 174
Lewer, Richard 211
Lochore, Brad 126
Maddox, Allen 46, 47, 48, 94, 95, 96, 177, 178, 179, 210
Matchitt, Gina 106
McArthur, Piera 163
McCahon, Colin 54, 76
McIntyre, Mary 202
McIntyre, Peter 7
McIntyre, Simon 146, 147, 173
McPhee, Charles 200, 201
Miller, Judy 10
Mitchell, Samantha 91, 92, 93
Mrkusich, Milan 54, 206
Palmer, Stanley 37
Pardington, Fiona 74, 75
Parekowhai, Michael 43, 44
Paterson, Rueben 6, 42, 136
Patterson, Keith 166, 190
Paul, Joanna Margaret 151
Peryer, Peter 65, 68
Pick, Seraphine 145, 149
Pickmere, Alison 191
Popovici, Christina 164
Pound, Patrick 19, 72
Pule, John 34, 207
Reithmier, Anne 172
Reynolds, John 15A, 21
Richmond, Dorothy Kate 137
Ritchie, Ross 54
Robinson, Peter 18
Savage, Cedric 196
Shannon, Marie 64
Sladden, Tom 189
Smither, Michael 45, 54, 83, 84, 98, 139, 199, 203, 204
Stevenson, Michael 104
Stichbury, Peter 29, 141
Stringer, Terry 24, 25, 26, 32
Tapper, Garth 16
Tawhio, Tracey 38
Taylor, Alan 175
Taylor, E. Mervyn 62, 155, 156, 157, 158, 159, 160, 161, 162
Tjampitjinpa, Shorty Jackson 198
Tocher, Hamish 71
Tole, Charles 87
Tornquist, Herbert 124
Tricker, Gary 186
Turkington, James 109
Twiss, Greer 27, 33
Walsh, John 11
Walters, Gordon 2, 54, 53A
Watkins, Denys 89, 90
Weeks, John 111, 209
Westra, Ans 35, 66, 67
White, A. Lois 107, 108
White, Robin 3, 4, 5, 15
Wilkinson, Brendan 28
Williams, Mervyn 54, 205
Wolfe, Emily 123
Wood, Agnes 114
Woollaston, Toss 54
Wright, Walter 195
Youle, Wayne 36



586



603



585



602



601



596



576



595



592

