



ART +
OBJECT





New Collectors Art

Tuesday 22 October 2013 at 6.30pm

Rare Toys including the Maryanne Wealleans Collection

Thursday 24 October 2013 at 5.00pm

New Zealand and International Studio Ceramics and Glass

Thursday 24 October 2013 at 6.45pm

In recent years ART+OBJECT has been privileged to offer a number of nationally and internationally significant collections. In April 2011 The [Michael Seresin Collection of International Black and White Photography](#) and the [Martin Hill Collection of International and New Zealand Ceramics](#) attracted interest from collectors all over the world. The [Les and Milly Paris Collection](#) of September 2012 proved to be the highest grossing art auction in New Zealand history at \$4.65 million.

A+O has also offered the collections of John Perry (2009), Douglas Lloyd Jenkins (2011), Nicholas Browne (2013) and the Estate of photographer Brian Brake (2010). Each of these catalogues is a well-remembered event for many individual collectors who found the insight afforded by collections assembled over many decades as unique and potent reference points. The perspicacious eye of the collector combined with the knowledge and love for their chosen genre conflate to inform the term provenance and all the meaning it carries.

The Collection Of Kees and Tina Hos, Founders of New Vision Gallery

It is fair to say that New Vision Gallery holds a near supreme position in the hearts and minds of NZ collectors of studio pottery and modernist art. It was there in the mid 1960s that Theo Schoon and Gordon Walters held key solo shows, the resonance of which grows with each passing year. New Vision Gallery was founded in 1965 by Kees and Tina Hos and A+O is pleased to offer their collection in this catalogue along with pieces by key practitioners associated with the New Vision years. Ceramics from the Hos collection which include Len Castle, Barry Brickell, Adrian Cotter, Patricia Perrin, Kenneth Clark, Doris Dutch, Warren Tippet, Graeme Storm and Greer Twiss constitute an unrivalled glimpse into a unique period of New Zealand studio pottery and the vital role played by these groundbreaking gallerists. Also offered is the collection of Anneke Borren whose totemic ceramic forms are regarded as a high point of art meets ceramics in the New Zealand context. Her collection also includes a number of major pieces by her contemporaries.

The Gary Winther Collection

Gary Winther is a dedicated and wide-ranging collector who for over three decades has assembled a world class collection of the finest Japanese studio pottery with impeccable and documented provenance. Peerless signed and boxed examples of legendary masters such as Hamada and Shimaoka are the hallmarks of this superior collection. Together with the Hos collection and major works consigned by other collectors this catalogue will facilitate a survey of New Zealand studio practice from the 1960s alongside influential international practitioners. We are pleased to be able to offer our finest ever catalogue of this genre. All items will be on exhibition at ART+OBJECT from October 18th.



ART+OBJECT

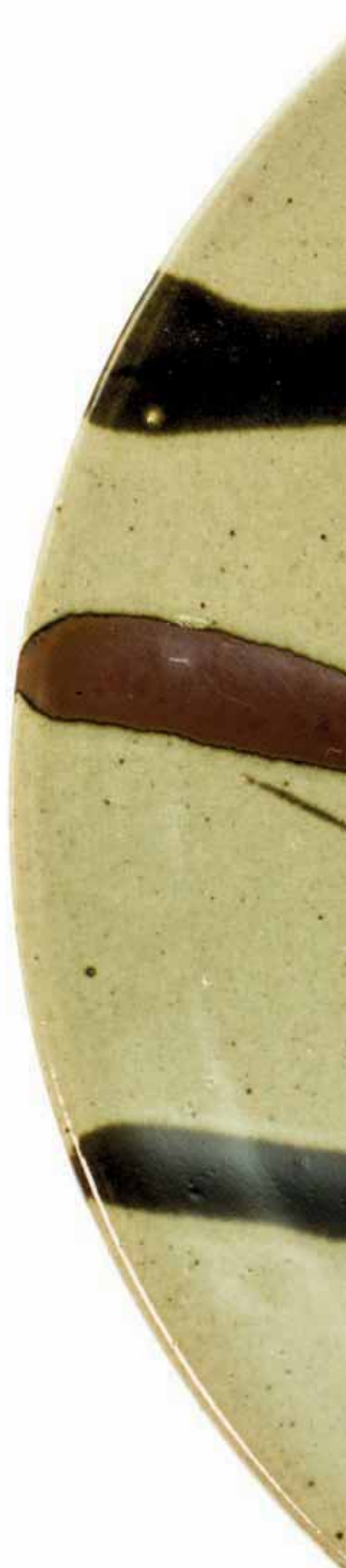
3 Abbey Street
Newton
Auckland

PO Box 68 345
Newton
Auckland 1145

Telephone: +64 9 354 4646
Freephone: 0 800 80 60 01
Facsimile: +64 9 354 4645

info@artandobject.co.nz
www.artandobject.co.nz

Front & back cover: Fran and Paul Dibble, detail (644,645)
Inside front cover & page 1: Don Driver (15)
Inside back cover: Robin White, detail (30)
Opposite: Shoji Hamada, detail (465)





Stephen Bambury
"And Also Its Constant Equilibrium"
 (Chakra No.5)
 copper leaf and 23k gold
 on 7 aluminium panels, 1992
 \$52 760



Bill Culbert
Bulb Box Reflection 1
 mixed media, 1974
 \$12 895
from the Peter Fay Collection



Colin McCahon
Necessary Protection
 synthetic polymer paint
 and charcoal on paper, 1971
 \$64 485



Ann Robinson
Square Nikau
 cast glass in two pieces, 1992
 \$42 210

AUCTION HIGHLIGHTS
 IMPORTANT PHOTOGRAPHS,
 PAINTINGS AND
 CONTEMPORARY ART
 INCLUDING THE PETER FAY
 AND THE STELLAR GROUP
 COLLECTIONS

15 August 2013



Ava Seymour
Valley of the Fruticakes from Health,
 Happiness, Housing
 vintage colour hand-print on Agfa paper
 \$9730
from the Peter Fay Collection



Michael Parekowhai
Portrait of Elmer Keith No.1
 type C print, edition of 10, 2004
 \$18 175
from the Stellar Group Collection



Milan Mrkusich
Painting 62-3
 oil on canvas, 1962
 \$52 760



Theo Schoon
Done up in pins and curlers
 oil and ink on paper
 \$29 310



Dale Frank
Flying Solo Dawns Basting the
 Truth/Milf's & Dilf's Waiting 4 U/
 Auckland Landscape
 acrylic and varnish on canvas, 2004
 \$49 245



Colin McCahon
Kauri
 Charcoal on paper, 1953
 \$58 625



Important Paintings and Contemporary Art

26 NOVEMBER 2013
ENTRIES INVITED UNTIL 01 NOVEMBER

Rita Angus
Haycocks, Wainui
watercolour, 1943
228 x 245mm
\$50 000 – \$60 000

Contact:
Ben Plumbly
ben@artandobject.co.nz
09 354 4646
021 222 8183

20TH CENTURY DESIGN

11 DECEMBER 2013

Entries invited until November 15

A+O's design catalogues have become the industry standard with carefully selected items of superior and correct provenance. The final catalogue of the year will feature a fine selection of rare New Zealand furniture including a pair of Lippincott chairs, and examples of design by John Crichton, Garth Chester, Ernst Plischke, Timothy John and Ernest Shufflebotham for Crown Lynn. The catalogue will also feature vintage signature pieces by Alvar Aalto, Mies Van der Rohe, Le Corbusier, Charles and Ray Eames, Fritz Hansen, Louis Poulsen, George Mulhauser, Pieri Vandel, Hans Wegner and Eero Saarinen.

Alvar Aalto

A Pair of Armchairs designed for
the Paimio Center, 1931-1933
laminated birch plywood
\$3000 – \$5000

Charles and Ray Eames

LCW chair
\$600 – \$800

Contact:

James Parkinson
james@artandobject.co.nz
09 3544 646
021 222 8184



NEW ZEALAND
HISTORY AND
DECORATIVE ARTS
12 DECEMBER 2013

Entries invited until 15 November

A+O's final 2013 auction will be an eclectic offering of New Zealand artefacts, natural history and fine decorative arts. One of the highlights is the earliest pre-European Papa hou (feather box) ever offered at auction in New Zealand which features prominent figural carving to the base and fascinating provenance to the Northland region. The catalogue will also feature the extensive Graeme Storm collection of Asian pottery and antique furniture and silver from a Hawkes Bay Estate. Another highlight is a large diorama cabinet of taxidermy New Zealand birds including huia, kiwi, kakariki, pipiwharau and kaka.

Tene Waitere

Carved paddle with manaia,
ancestral figures and inlaid paua
circa 1910
\$6000 – \$10 000

Contact:

James Parkinson
james@artandobject.co.nz
09 3544 646
021 222 8184




RARE BOOKS
05 DECEMBER 2013

**Selected final entries invited
until October 18th**

The Poa (Tui)
"New Zealand's Rarest Print"
Robert Laurie ca 1775-1836.
mezzotint printed in oil colours
360 x 250 mm around the plate mark
In fine original condition as published in 1776
\$12 000 – \$15 000

Contact:
Pam Plumbly
pam@artandobject.co.nz
09 3544 646



CHESTER
NEALIE BOOK
FUNDRAISING
AUCTION
EARLY 2014

Entries invited

A+O is pleased to announce and host this important New Zealand Ceramics event. In 2014 Friends and Supporters of the NZ Potter Chester Nealie are planning to publish a high quality career monograph to celebrate his 50 years as a potter. To assist in raising funds for this important document Chester himself will be offering a number of key pieces as are a wide range artists, craftspeople and private collectors. A+O is also contributing to the fundraising with a portion of the sale fees.

To discuss including a piece in this auction event contact James Parkinson at ART+OBJECT on 09 354 4646 or email james@artandobject.co.nz or Stuart Newby from Auckland Studio Potters via email snewby@masseyhigh.school.nz or mob 027 275 0045

ON THE RADAR

The story of Piha's World War 2 radar station

SANDRA CONEY



ON THE RADAR tells the story of Piha's World War 2 radar station, where the new high-tech weaponry of radar scanned the skies for signs of invading Japanese and the seas for submarines. One of a coastal network, reporting to the secret nerve centre at the Epsom Filter Room, the Piha station was a key part of New Zealand's home defence.

This is also a book about a place and the connections between its ancient past, its history and its present. The high hill on which the station sat was sacred to Maori, a place where supernatural feats were performed. In the 1940s, experiments were conducted here, now acclaimed as laying the foundations for the modern science of radio astronomy.

ON THE RADAR will be a revelation for readers, containing much new material about strange happenings at New Zealand's best known beach, along with over 170 previously unseen images.

SANDRA CONEY is a well-known writer with a deep love of the West Coast.

Published by Keyhole Press &
Protect Piha Heritage

208 pages, over 170 historic and
contemporary images, colour throughout,
full reference and index

Paperback, section sewn / RRP \$40

ISBN 978-0-473-24599-3

To order email: onth radar@extra.co.nz
or order online at www.piha.co.nz/books

Available in selected bookshops

Phone: 09 356 7074



New Zealand and International Studio Ceramics and Glass



Thursday 24 October at 6.45pm

3 Abbey Street, Newton, Auckland

Lots 450–746 in this catalogue will be followed by an uncatalogued and unreserved offering of 150 items of studio pottery.

VIEWING

Friday 18 October 9.00am – 5.00pm

Saturday 19 October 11.00am – 4.00pm

Sunday 20 October 11.00am – 4.00pm

Monday 21 October 9.00am – 5.00pm

Tuesday 22 October 9.00am – 5.00pm

Wednesday 23 October 9.00am – 5.00pm

Thursday 24 October 9.00am – 1.00pm

Clockwise from top-left: Richard Parker (557),
Barry Brickell (551), Anneke Borren (554/552),
Len Castle (605), Jova Rancich (679), Len Castle (598),
Janet Mansfield (453)



452



450

451



453

477

470

460

454

450. Lucie Rie
Elliptical shaped stoneware bowl with white tin glaze to the interior and manganese glaze to the exterior, impressed LR seal mark to the base. Provenance: Beverley Luxton collection. D. 150mm
\$1000 – \$2000
451. Lucie Rie
Stoneware beaker with white tin glaze impressed LR seal mark to the base. Provenance: Beverley Luxton collection. H. 110mm
\$500 – \$800
452. Ann Wynn Reeves
Stoneware dish of elliptical shape decorated with a stylised bull in a landscape setting. Original label affixed to the base. L. 390mm
\$300 – \$500
453. Janet Mansfield (Australia)
Large stoneware vase, ovoid form with lug handles, brown salt glaze and incised decoration, impressed potter's initials to the shoulder. Provenance: Anneke Borren Collection. H.460mm
Janet Mansfield (1934-2013) was one of Australia's foremost potters. Her considerable contribution to her art has been acknowledged by a number of awards including the Australia Council for the Arts Emeritus award in 1990

454. Col Levy (Australia)
Stoneware Mizusashi (Japanese water pot) wood fired with blue iron oxide evident in the surface. H. 270mm Provenance: Anneke Borren Collection
\$500 – \$700
455. Bernard Leach
Early St Ives slipware jug, with dark cream slip on a brown ground, impressed mark. Provenance: This jug is reputedly amongst the first ceramics fired by Bernard Leach at St Ives in the 1920s, from the collection of Renton and Rosie Murray, purchased in 1974. H.125mm
\$300 – \$500
- and the medal of the Order of Australia in 1987. Mansfield served as editor of the magazine Pottery in Australia from 1976-1989. In 1990 she founded the magazine Ceramics art and perception and in addition was the author of six books on Australian and international ceramics. Her work is represented in most Australian public galleries and internationally in NZ, USA, Japan, UK, Canada, Norway, Germany, Switzerland and China. This fine example of her work was exhibited in Auckland in the mid 1980's and has been retained in Anneke Borren's collection since then.*

456. Bernard Leach
Early St Ives slipware saucer, with a cream slip on an olive green ground, impressed mark. Provenance: This saucer is reputedly amongst the first ceramics fired by Bernard Leach at St Ives in the 1920s, from the Collection of Renton and Rosie Murray, purchased in 1974. D.160mm
\$150 – \$300
457. Bernard Leach
Stoneware teapot with brown floral decoration on a grey ash glazed ground. Chip to the lid. Impressed St Ives seal mark and personal seal mark. Provenance: Martin Hill collection
\$700 – \$900
458. Bernard Leach (attributed)
Stoneware teapot with floral decoration on a grey ash ground. Unmarked. Provenance: Martin Hill collection
\$300-\$500
459. Michael Cardew
Abuja pottery, two lidded cups, one with a slate grey glaze and the other with a tenmoku glaze. Each with Abuja seal marks. Provenance: Martin Hill collection
\$250 – \$500



462



464



463



467



466



475

476

Gary Winther collection of International Studio pottery

460. Tatsuzo Shimaoka
Stoneware yunomi, slip inlaid decoration. H. 90mm
\$400 – \$800

461. Shoji Hamada
Stoneware circular dish, tetsue brushwork, with signed wood box. D. 210mm
\$1500 – \$2000

462. Shoji Hamada
Stoneware square dish, kaki chequerboard pattern with painted iron and green enamel panels with floral design, with signed wood box. W. 205mm
\$1500 – \$2500

463. Tatsuzo Shimaoka
Large square stoneware plate, press moulded the rim with rope and slip inlaid pattern, the centre covered in a green glaze, with signed wood box. W. 295mm
\$2000 – \$3000

464. Shoji Hamada
Rectangular stoneware bottle vase, press moulded, covered in a kaki glaze with poured jun glaze shaped panels to the front and back, with signed wood box. H. 160mm
\$2000 – \$3000

465. Shoji Hamada
Large stoneware circular dish, poured black and kaki glaze over an oatmeal background, with signed wood box. Provenance: purchased from the Pucker Gallery, Boston. D.355mm
\$3000 – \$5000

466. Shoji Hamada
Stoneware chawan (tea bowl), tenmoku glaze and black brushwork, with signed wood box and fitted external carrier box. Provenance: Originally gifted to an American Admiral. D.125mm
\$1000 – \$1500

467. Tatsuzo Shimaoka
Large stoneware vase, rope and slip inlaid decoration to the shoulder, the interior with tenmoku glaze, potter mark to the base, with signed wood box. H. 265mm
\$2500 – \$4000

468. Totaro Sakuma
Mashiko pottery stoneware dish, with gestural tenmoku and kaki glaze depicting a peach on a leafy spray. D. 250mm. Totaro Sakuma was an important contemporary potter of Hamada.
\$300 – \$500

469. Murata Gen
Mashiko pottery stoneware square dish, tenmoku glaze and wax resist design. W. 225mm
\$300 – \$500

470. Tatsuzo Shimaoka
Small stoneware jar with cone lid, rope and slip inlaid decoration. H. 160mm
\$400 – \$800

471. Tatsuzo Shimaoka
Large stoneware circular dish, the rim covered with jun glaze, the centre with rope and slip inlay within concentric lines. D. 310mm
\$1000 – \$2000

472. Two Japanese stoneware yunomi, shino type glaze and wax resist design, one with wood box. H. 85mm
\$100 – \$200

473. Small Japanese stoneware slab vase, rich black glaze. H. 210mm
\$100 – \$200



461



465



478



471

474. Japanese stoneware pottery vase, impressed mark. H. 205mm
\$30 – \$80
475. Tatsuzo Shimaoka
Set of two stoneware yunomi, rope and slip inlaid decoration, with signed wood box. H. 100mm max
\$700 – \$1200
476. Tatsuzo Shimaoka
Set of two stoneware yunomi, rope and slip inlaid decoration and tenmoku glaze bands and slashes, impressed mark, with signed wood box. H. 90mm max
\$600 – \$800
477. Tatsuzo Shimaoka
Stoneware lidded teapot and chawan (teabowl), rope and slip inlaid decoration, the teapot with a side-mounted handle. H. 125mm max
\$800 – \$1200
478. Mashiko Pottery Stoneware dish with brushed dark green and olive wave designs on an oatmeal grey glazed ground. Provenance: Martin Hill collection. D.370mm
\$300 – \$500
479. Tatsuzo Shimaoka
Two stoneware dishes rope and slip inlaid decoration [restoration]. D. 210mm
\$300 – \$500
480. Tatsuzo Shimaoka
Two stoneware dishes, rope and slip inlaid decoration [restoration]. D. 205mm
\$300 – \$500
481. Pair of Mashiko pottery stoneware yunomi, black glaze and wax resist brushwork. H. 90mm
\$100 – \$200
482. Mashiko pottery stoneware yunomi, kaki glaze and resist panels with brushwork decoration. H. 85mm
\$100 – \$200
483. Japanese stoneware vase, poured white glaze over ash glaze. H. 230mm
\$100 – \$200
484. Japanese double gourd stoneware vase, unglazed with enamelled decoration, impressed mark. H. 220mm
\$50 – \$100
485. Japanese double square stoneware dish, with a reddish pink crackled glaze decorated with wax resist lozenge design, incised cross hatched pattern to the unglazed corner and base. W. 265mm
\$50 – \$100

Further International pottery



493

490



500

503

455

498

486. Geoff Mincham [Australia]
Large elliptical floor vase [small chip evident to the base]. H. 300 x W. 380mm
\$200 – \$400

487. Jason Hess [USA]
Anagama fired stoneware bottle and lid, impressed mark to lid top. H. 3850mm. Exhibited at the Lill Street Gallery, Chicago, Illinois in 1999.
\$350 – \$450

488. Jason Hess [USA]
Anagama fired stoneware bottle and lid, impressed mark to lid top. H. 390mm. Exhibited at the Lill Street Gallery, Chicago, Illinois in 1999.
\$350 – \$450

489. Jason Hess [USA]
Anagama fired stoneware bottle and lid, impressed mark to lid top. H. 390mm. Exhibited at the Lill Street Gallery, Chicago, Illinois in 1999.
\$350 – \$450

490. Jason Hess [USA]
Anagama fired stoneware bottle and lid, impressed mark to lid top. H. 370mm. Exhibited at the Lill Street Gallery, Chicago, Illinois in 1999.
\$350 – \$450

491. Jason Hess [USA]
Anagama fired stoneware bottle and lid, impressed mark to lid top. H. 430mm. Exhibited at the Lill Street Gallery, Chicago, Illinois in 1999.
\$350 – \$450

492. Jason Hess [USA]
Anagama fired stoneware bottle and lid, impressed mark to lid top. H. 410mm. Exhibited at the Lill Street Gallery, Chicago, Illinois in 1999.
\$350 – \$450

493. Jason Hess [USA]
Anagama fired stoneware bottle and lid, impressed mark to lid top. H. 385mm Exhibited at the Lill Street Gallery, Chicago, Illinois in 1999.
\$350 – \$450

494. Jason Hess [USA]
Six stoneware circular plates, three covered with tenmoku glaze, one with shino glaze, one with pale crackled celadon glaze, the last anagama fired, all with an impressed mark. D. 315mm
\$1000 – \$1500

495. Jason Hess [USA]
Pair of stoneware square platters with tenmoku glaze and raised textured dots decoration, impressed mark. W. 290mm
\$500 – \$800

496. John Chappell [England]
Stoneware lidded jug with mottled blue glaze, signed to the base and dated 26/6/61. H. 150mm
\$200 – \$400

497. David Leach
Small celadon glaze vase, six wine cups and a salt cellar, potter's marks. Provenance: Beverley Luxton collection.
\$50 – \$100

499. Jeff Oestreich
Stoneware beaked pitcher with tenmoku glaze, impressed mark [restoration to the beak]. W. 240mm
\$250 – \$350

500. Jeff Oestreich
Large and impressive wood fired stoneware teapot with shino glaze, late 1990s, impressed mark. W. 320mm
\$1000 – \$1500

501. Jeff Oestreich
Porcelain tea cup with pale celadon glaze, impressed mark. H. 110mm
\$200 – \$300

502. Jeff Oestreich
Stoneware handled tea cup, impressed mark. H. 110mm
\$200 – \$300

503. Jeff Oestreich
Stoneware beaked pouring vessel, with cover, impressed mark. W. 185mm
\$400 – \$600

504. Jeff Oestreich
Soda fired stoneware bowl, impressed mark. D. 185mm
\$200 – \$300

505. Jeff Oestreich
Stoneware triangular vase, impressed mark. W. 140mm
\$300 – \$500

506. Jeff Oestreich
Large stoneware beaked teapot and cover, impressed mark. W. 245mm
\$500 – \$800

507. Scott Goldberg [USA]
Wood fired stoneware lidded pouring vessel, impressed mark. H. 160mm
\$100 – \$200

508. Linda Christianson [USA]
Wood fired sugar bowl with turquoise interior. D. 115mm
\$100 – \$200

509. Linda Christianson [USA]
Small stoneware dish. D. 130mm
\$50 – \$10

510. Large stoneware Burmese floor vase with lug handles to the shoulder. H. 660mm
\$400 – \$600

Jeff Oestreich pottery from the collection of Renton and Rosie Murray

Jeff Oestreich was born in 1947 in St Paul, Minnesota. As a result of his training in England at the Leach Pottery his early pieces were heavily influenced by the austere simplicity of Asian pottery. Although this tradition still underpins his work, particularly in relation to simplicity of form, the pieces in this catalogue have strong visual ties to Art Deco architecture. It was a trip to Napier in New Zealand that was the original source of the development of his mature style. His utilitarian pieces are soda fired with minimal use of coloured glaze and the work is thrown and altered either by faceting, stretching or cutting and re-joining. A highly regarded studio potter, Jeff has exhibited widely throughout the world. Examples of his work are held in the Victoria and Albert museum, the Ichon World ceramic centre, the Smithsonian Renwick Gallery and the Los Angeles museum of Art. The fine examples offered in the sale come from the collection of Renton and Rosie Murray who have had a long term working relationship and friendship with Jeff Oestreich.

498. Jeff Oestreich
Soda fired stoneware tea cup, impressed mark. H. 110mm
\$200 – \$300



- 511. Kenneth Clark
Blue lustre glazed dish with abstract design and incised decoration, impressed marks to the base.
L. 320mm
\$100 – \$200
- 512. Robert Barron (Gooseneck Pottery, Australia)
Stoneware jug with salt glaze marked GNP to the base. H. 300mm
\$100 – \$200
- 513. Zaalberg Potteries
Dutch 1950s stoneware bottle vase with iridescent lustre glaze. H. 350mm
\$100 – \$200
- 514. Zaalberg Potteries
Dutch stoneware vase. H. 390mm
\$100 – \$200
- 515. Len Castle
Hanging form bottle vase with textured umber pigmented surface, impressed initials. L. 440mm
\$400 – \$600
- 516. Len Castle
Hanging form textured umber pigmented surface, impressed initials. D. 250mm
\$200 – \$300
- 517. Len Castle
Hanging form of large flattened shape, umber pigmented textured surface, impressed initials. D. 350mm
\$400 – \$800
- 518. Len Castle
Large stoneware bowl with tenmoku glaze over ash. D. 360mm
\$400 – \$800
- 519. Jan Ball
Salt glaze hanging bottle form with lug handles to the shoulders for suspension, signed verso. D. 260mm
\$150 – \$400
- 520. Len Castle
Stoneware bowl, ash glaze, impressed initials to the base. D. 205mm
\$300 – \$500
- 521. Doris Dutch
Stoneware vase, textured surface, unmarked. H. 120mm x W. 140mm
\$50 – \$100
- 522. Len Castle
Early stoneware globular vase, impressed initials. H. 60mm
\$100 – \$200
- 523. Len Castle
Stoneware bowl with celadon ash glaze, impressed initials. D. 300mm
\$200 – \$400
- 524. Mary Hardwick-Smith
Stoneware model kiln form with five pots, label affixed to the base.
\$100 – \$200
- 525. No Lot
- 526. Patricia and Phyllis Perrin
Rare stoneware drum form with vellum drum skin and leather binding. D. 160mm
\$200 – \$400
- 527. Patricia and Phyllis Perrin
Rare stoneware drum form with vellum drum skin and leather binding. D. 120mm
\$200 – \$400
- 528. Len Castle
Stoneware bottle vase of squat globular form. H. 100mm
\$100 – \$200
- 529. Pat Perrin
Stoneware vase with multiple apertures to the surface, signed to the base. H. 130mm
\$100 – \$200
- 530. Pat Perrin
Stoneware onion pot with poured glaze to the surface, original cork stopper pierced at the shoulders for suspension and with original rope attached. H. 160mm
\$250-\$500



517



518



557

531. Pat Perrin
Stoneware jug, signed to base and with artists impressed cypher. H. 220mm
\$50 – \$100
532. Jeff Scholes
Stoneware jug, partially glazed with exposed stoneware body to the base, signed. H. 230mm
\$50 – \$100
533. Greer Twiss
Bronze sculptural form with wing nuts, signed and dated '80. 130 x 100mm
\$200 – \$300
534. Roger Brittain
Stoneware lidded pot unusually painted with an arts and crafts inspired tree form decoration. H. 240mm
\$200 – \$300
535. Adrian Cotter stoneware wine bottle with original label and stopper "Kumeu Red Dry". H. 300mm
\$100 – \$200
536. Graham Storm
Stoneware bottle vase, with blue barium glaze. H. 130mm
\$50 – \$100
537. Graham Storm
Stoneware bowl with blue barium glaze. D. 170 mm
\$50 – \$100
538. Adrian Cotter
Stoneware dish. D. 290mm
\$40 – \$80
539. Adrian Cotter
Stoneware garden sculpture made for Tina Hoss. H. 520mm
\$200 – \$400
540. Potter unknown, stoneware dish. D. 280mm
\$30 – \$50
541. Warren Tippett
Stoneware bowl with potters cypher to the base. D. 210mm
\$100 – \$200
542. Warren Tippett
Stoneware bowl with gestural decoration, cypher to base. D. 140mm
\$100 – \$200
543. Warren Tippett
Stoneware vase with red and green glaze, cypher to base. H. 150mm
\$100 – \$200
544. Warren Tippett
Stoneware platter. 190 x 190mm
\$100 – \$200
545. Roger Brittain
Ovoid vase with shino glaze, mark to base and original exhibition label. H. 260mm
\$100 – \$200
546. Jill Totty
Stoneware ware plate made for Kees Hos, "No Fussing Allowed". D. 270mm
\$50 – \$100
547. Martin Beck
Stoneware elliptical shaped bowl, potter's cypher to base. L. 440mm
\$50 – \$100
548. Margaret Milne (attributed)
Yunomi stoneware tea bowl with Chinese hare's fur inspired glaze.
\$50 – \$100
549. Roy Cowan
Stoneware vase with ash glaze, signed with initials to base. H. 210mm
\$100 – \$200
550. Jan Ball
Salt glaze bowl, together with two mugs and another salt glaze bowl.
\$50 – \$100
551. Barry Brickell
'Tunnel Morphic' stoneware vase, impressed title to the neck of the vase. H. 680mm. Purchased from New Vision Gallery, New Vision exhibition number 13 inscribed to the underside.
\$500 – \$800



552

553



564



568



562



558



569



560



561

Anneke Borren Collection

552. Anneke Borren
Important and rare stoneware prototype lamp base, with sand filling, commissioned for the Beehive in 1976. *This and the following example were made as a group of twenty-four when Anneke Borren was part of the Beehive interior design team. This was Anneke Borren's first major commission. These two examples have been retained in Anneke's collection since the date of the commission; one other known surviving example is held in the national collection of Te Papa Tongarewa.* H. 490mm \$1200 – \$1800
553. Anneke Borren
Important stoneware prototype lamp base, with sand filling, commissioned for the Beehive in 1976, matching the previous lot. H. 490mm \$1200 – \$1800
554. Anneke Borren
Stoneware totem form mounted on a rectangular wooden block, made in 1999. H. 960mm \$1600 – \$2400
555. John Parker
Early high fired stoneware bowl, conical shape, matt black glaze, potter's initials to the base, circa 1970s. D. 300mm \$500 – \$1000
556. Rick Rudd
Bottle 1984, Pinched and coiled HGB clay, raku fired. W. 480mm. *Exhibited in the Rick Rudd retrospective True to Form A survey exhibition of works 1968-1996. Illustrated on page 16 of the exhibition catalogue.* \$1400 – \$1800
557. Richard Parker
Large and impressive winged vase, decorated in black with cream splashes, label affixed to the base inscribed *Richard Parker Kaeo*, late 1980s. H. 390mm. *A similar but smaller example illustrated in Richard Parker Objectspace Masters of Craft, plate 39.* \$1000 – \$1500
558. Richard Parker
Important early transitional wood fired stoneware vase, labelled affixed inscribed *Richard Parker Kaeo* and additionally signed in pencil and dated 1997. H. 230mm. *Exhibited in an exhibition of Richard Parker's works in Santa Barbara.* \$500 – \$1000
559. Marilyn Wiseman
Stoneware platter with brushwork gestural decoration, incised potter's mark to the base, mid 1970s. W. 460mm \$300 – \$500
560. Chester Nealie
Good early woodfired stoneware floor vase, lug handles to the shoulder, ash glazed, made in New Zealand in the early 1970s. H. 460mm \$1500 – \$2000
561. Chester Nealie
Rare and important early wood fired stoneware plate, ash glazed, made in New Zealand in the early 1980s. D. 390mm \$1200 – \$1600
562. Chester Nealie
Wood fired stoneware 'Windows Series' vase, ash glazed, label affixed to the base, made in New Zealand in the early 1980s. H. 190mm \$600 – \$1000
563. Gail Weisburg
Hand painted porcelain anthropomorphic jug with Pacific inspired motifs, made in New Zealand in the early 1970s. H. 360mm \$300 – \$500
564. Barry Brickell
Large and impressive fatso stoneware jug, green/brown ash glaze with strap handle, impressed potter's cipher to the base of the handle, 1970s. H. 370mm \$1200 – \$1800
565. Paul Fisher
Large ovoid stoneware vase, incised character mark to the base. H. 290mm \$500 – \$800
566. Roy Cowan
Large stoneware charger, polychrome painted with a cottage set beneath a mountain, the scene issuing from an urn form, label affixed verso and dated 1989. D. 480mm \$1000 – \$1500
567. Len Castle
Stoneware hanging form, with umber pigmented surface, impressed initials, mid 1990s. H. 360mm \$350 – \$500
568. Mirek Smisek
Good stoneware jug, copper red salt glaze, potter's cipher to the base, early 1980s. H. 260mm \$500 – \$1000
569. Ross Mitchell-Anyon
Large and impressive stoneware charger, with white slip chattering surface decoration. W. 520mm. *Exhibited in a Survey exhibition of Ross Mitchell- Anyon's work in 2000 at the Sarjeant Gallery, Wanganui.* \$1200 – \$1800



556



554

Other New Zealand Pottery

570. Stewart Newby
Stoneware bowl with jun type glaze on a black ground. Provenance: Beverley Luxton collection. D. 310mm
\$50 – \$100
571. John Sweden
Stoneware dish, Japanese inspired wax resist decoration, ash glaze over tenmoku, incised marks and dated '86. Provenance: Beverley Luxton collection. D. 400mm
\$200 – \$400
572. Margaret Milne
Lidded stoneware crock with textured surface, small chip to the rim. Provenance: Beverley Luxton collection. H. 430mm
\$100 – \$200
573. Charles Holmes
Stoneware sedge grass vase. Provenance: Beverley Luxton collection. W. 240mm
\$50 – \$100
574. Richard Cadness
Stoneware bottle vase, barium blue glaze, potter's mark to the base. Provenance: Beverley Luxton collection. H. 420mm
\$50 – \$100
575. John Parker
Conical shaped bowl with blue agate glaze. Provenance: Collection of Beverley Luxton, purchased from New Vision Gallery at the time when Beverley Luxton was a member of the Twelve Potters Collective together with John Parker. D. 240mm
\$150 – \$300
576. Len Castle
Stoneware dish with jun type glaze to the interior, tenmoku to the exterior, impressed initials to the base. L. 300mm
\$300 – \$500
577. Len Castle
Wood fired stoneware globular vase. Impressed initials. H.150mm
\$150 – \$250
578. Ann Verdcourt
Bathing Figure, stoneware sculptural form raised from an ovoid base. H.200mm
\$200 – \$400
579. Ann Verdcourt
Earthenware vase, cylindrical form with iridescent glaze. H.270mm
\$200 – \$300
580. Len Castle
Rare early rectangular stoneware dish, impressed with a flower design. *This dish is one of a small number which were made for Len Castle's first exhibition in Japan in 1967.* Impressed initials to the base. L. 310mm
\$300 – \$500
581. Len Castle
Stoneware lidded casserole dish with ash glaze, impressed initials to the base. W. 220mm
\$100 – \$200
582. Len Castle lidded casserole dish, ash glazed and impressed initials to the base. W. 300mm
\$100 – \$200
583. Len Castle
Unusual stoneware conjoined multi aperture vase, ash and kaki glaze, impressed initials. H. 200mm
\$400 – \$400
584. Len Castle
Early stoneware vase, impressed initials. H.270mm
\$300 – \$500
585. Richard Cadness
Stoneware teapot with ash glaze and cane handle, impressed initials to base. W. 190mm
\$100 – \$200
586. Len Castle
Early stoneware vase with textured glaze, impressed initials. H. 190mm
\$300 – \$400
587. Barry Brickell
Large stoneware lidded bread crock with lug handles to the shoulder and blue salt glaze, impressed potters cypher to the lid. H. 460mm
\$700 – \$1200
588. Paul Meltzer & Anne Gandy
Large stoneware salt glazed vase with applied handle, impressed potters initials to the base. H. 420mm
\$300 – \$500
589. Mirek Smisek
Stoneware jug with strap handle, blue salt glaze, impressed potters cypher to the base. H. 280mm
\$400 – \$800
590. Denis O'Connor
Stoneware bottle with blue salt glaze, impressed potters cypher to the base. H. 280mm
\$400 – \$600
591. No Lot
592. Len Castle
Large stoneware circular bowl, ash and blue glazed interior with black glazed exterior. D. 400mm
\$400 – \$800
593. Marte Szirmay
Windholes
cast bronze pod form sculpture. D. 220mm
\$200 – \$400
594. Ted Dutch
Ceramic tile painted with a signaller figure. 160 x 160mm
\$200 – \$400
595. Barry Brickell
Stoneware jug with green glaze, applied strap handle and impressed potters marks. H. 200mm
\$100 – \$200
596. Don Thornley
Stoneware vase of rectangular form, shino crackle glaze together with a lidded stoneware jar. H. 300mm
\$100 – \$200
597. Len Castle
Branch vase
Press moulded stoneware vase with poured jun type glaze over tenmoku, impressed initials to the base. H. 460mm
\$4000 – \$5000
598. Len Castle
Branch vase
Press moulded stoneware vase with tenmoku glaze, impressed initials to the base. H. 360mm. *Illustrated: Len Castle Potter by Ron Sang and Len Castle, P. 211 and P. 213.*
\$3000 – \$5000
599. Len Castle
Sulphurous bowl
Large and impressive deep conical earthenware bowl with yellow sulphur glaze, impressed initials to the base. D. 410mm
\$4000 – \$6000
600. Len Castle
Large circular earthenware dish with blue glaze, impressed initials to the base. D. 530mm
\$800 – \$1200
601. Len Castle
Crater lake bowl/alkaline pool bowl in matt stained earthenware with sculptured cavetto with alkaline blue glazed well, impressed initials to the base. D. 480mm
\$3000 – \$5000
602. Len Castle
Sea Secrets earthenware vase, impressed initials to the base. W. 350mm
\$800 – \$1200
603. Len Castle
Inverted volcano, moulded earthenware, grey textured exterior with red lava glaze to the interior, impressed initials. W. 870mm
\$6000 – \$8000
604. Len Castle
Inverted Volcano, moulded earthenware with grey textured exterior and red lava glaze to the interior. Impressed initials to the base. L.860mm
\$5000 – \$8000
605. Len Castle
Blossom vase
The large and impressive press moulded vase with tenmoku glaze, impressed initials to the base. H. 530mm. *Illustrated: Len Castle Potter by Ron Sang and Len Castle. P.211 and P.213*
\$5000 – \$8000
606. Campbell Hegan
Large ovoid vase with sang de boeuf type red glaze, impressed initials to the base. H. 300mm
\$500 – \$800
607. Guy Ngan
Habitation
Cast bronze on composite stone base, signed and dated 1999. H. 120mm W. 120mm
\$2500 – \$3000



592



590

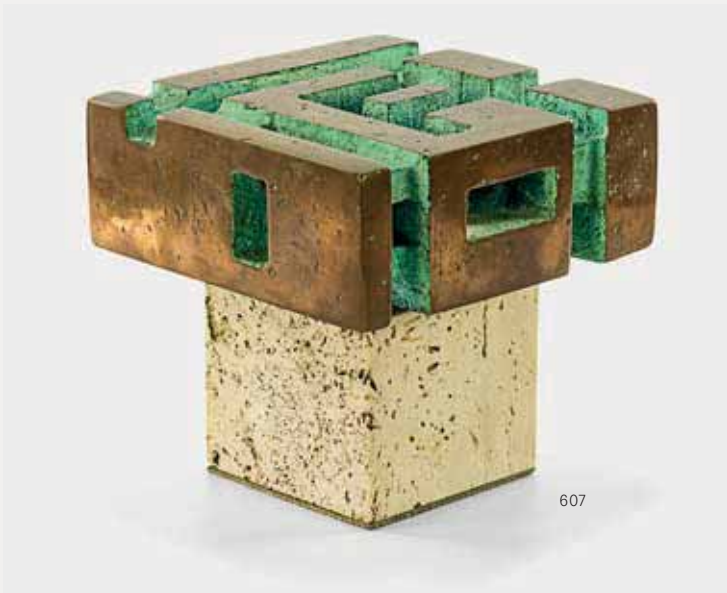
589



575



587



607



593



605



598

The Russell McVeagh Collection of Applied arts

608. Peter Alger
Stoneware square form vase with shino glaze, potters cypher impressed to the base. H. 200mm
\$200 – \$300
609. Peter Alger
Stoneware square form vase with shino glaze, potters cypher impressed to the base. H. 180mm
\$150 – \$250
610. Peter Alger
Stoneware square form vase with shino glaze, potters cypher impressed to the base. H. 160mm
\$150 – \$250
611. Peter Alger
Lidded stoneware jar with blue crackle glaze and with reversible lid, potters cypher to the base. H. 200mm W. 210mm
\$200 – \$300
612. Len Castle
Stoneware lipped alkaline pool bowl with silica rubbed oxide textured exterior and alkaline blue glaze to the well. D. 400mm
\$1200 – \$2000
613. Len Castle
Stoneware lipped alkaline pool bowl with silica rubbed oxide textured exterior and alkaline blue glaze to the well. D. 300mm
\$1000 – \$2000

614. Len Castle
Crater Lake bowl with sculptured cavetto rim and blue alkaline glaze to the well and dark stained exterior, impressed initials to the base. D. 490mm
\$1500 – \$2000
615. Ray Rogers
Large stoneware orb vase with iridescent glaze, signed to the base. H. 300mm
\$200 – \$400
616. Peter Alger
Large stoneware platter with shino glaze and potters cypher to the base. D. 400mm
\$200 – \$400
617. John Madden
Large and impressive wood fired floor vase with lug handles to the shoulder. H. 1020mm
\$500 – \$1000
618. Roy Cowan
Impressive floor vase with incised concentric, geometric circles in blue salt glaze. H. 500mm
\$2000 – \$3000

Further New Zealand pottery and glass from other vendors

619. Ross Mitchell- Anyon
Salt glazed stoneware teapot, unmarked. W. 280mm max
\$200 – \$300
620. Renton Murray (Hillside Pottery)
Two salt glazed ramekins and a salt glazed mug, impressed marks to each. H. 100mm max
\$40 – \$80
621. Renton Murray (Hillside Pottery)
Stoneware lidded pot with salt glaze, impressed mark. H. 250mm
\$100 – \$200
622. Renton Murray (Hillside Pottery)
Stoneware bowl with salt glaze, impressed mark. D. 140mm
\$40 – \$80
623. Renton Murray (Hillside Pottery)
Stoneware jug with salt glaze, impressed mark. H. 125mm
\$50 – \$100
624. Renton Murray (Hillside Pottery)
Stoneware lidded dish with salt glaze, impressed mark. D. 155mm
\$50 – \$100
625. Barry Brickell
Stoneware bottle with poured kaki glaze, impressed potters cypher. H. 300mm
\$250 – \$350
626. Chester Nealie
Anagama fired lidded teapot, with artist label. W. 160mm
\$200-\$400
627. Mirek Smisek
Large stoneware bowl with blue and brown salt glaze with infill restoration completed by Mirek Smisek. Potters cypher to the base. D. 500mm
\$100 – \$200



597



618

628. Mirek Smisek (attributed)
Large stoneware lamp with incised decoration in the manner of Bohemia ware, covered in a yellowish green glaze with later brown glazed stoneware base, presumably repaired by Mirek Smisek as with the above lot. H. 450mm
\$400 – \$600
629. Len Castle
Two stoneware wine goblets with celadon glaze to interior, impressed marks. H. 185mm
\$100 – \$200
630. Len Castle
Small stoneware hanging form with umber pigmented surface. W. 165mm
\$400 – \$600
631. Doreen Blumhardt
Stoneware lidded teapot with wax resist gestural design, impressed mark. W. 200mm
\$200 – \$300
632. Mirek Smisek
Stoneware vase with side lug handles, brown salt glaze and incised decoration, impressed mark. H. 260mm
\$800-\$1200
633. Len Castle
Stoneware slip glazed dish, decorated with intertwined snakes, impressed mark. D. 105mm
\$250 – \$350
634. Paul Maseyk
Large earthenware bottle vase inscribed 'good, crap, ugly, bad' signed to the base. H. 435mm
\$250 – \$350
635. Len Castle
Stoneware slip glazed dish, decorated with abstract design, impressed mark. D. 105mm
\$250 – \$350
636. Len Castle
Large blue glazed stoneware jug, impressed mark. H. 240mm
\$500 – \$800
637. John Parker
Tall 'Zig Zag' series vase in bronze iridescent glaze, c.1990, impressed mark. H. 395mm
\$700 – \$1000
638. Len Castle
Large stoneware jar with mottled blue and green glaze, impressed mark. H. 210mm
\$200 – \$300
639. Len Castle
Large earthenware bowl with heavily pitted jun type glaze, shallow impressed mark and inscribed initials to the base. D. 390mm
\$600 – \$800
640. Len Castle
Early stoneware bowl, with salt glaze, fired at 52 Westmere Crescent, Auckland, circa 1950s, impressed mark to the base [chipped]. D. 245mm. Provenance: Neil and Fay Castle Collection.
\$300 – \$500
641. Theo Schoon
An archive of photographs, sketches and correspondence from the collection of Len Castle. Consisting of 2 silver gelatin photographs and 18 loose sheets of graphite and ink working drawings with notes and annotations. The two photographs dms 165 x 215mm document Schoon's experiments with stamp techniques on plasticene & the balance of the sketches are working drawings for potential ceramics bowls, vases and sculptural pieces. Schoon and Castle enjoyed a long collaborative relationship from the early 1950s. Provenance: Neil and Fay Castle Collection
\$800 – \$1200
642. Len Castle
Sulphur bowl, impressed initials to the base. Provenance: Castle family collection. D.380mm
\$1500 – \$2000
643. Len Castle
Experimental sulphur bowl, incised initials to the base. Provenance: Castle family collection. D.490mm
\$800 – \$1200
644. Paul and Fran Dibble
Large stoneware slab vase of 'zig zag' shape, with hand painted decoration of builders working on a skyscrapers, the reverse with abstract design, signed and dated 'Dibble, NZ Palmerston North, 5/11/85' within a trefoil leaf frame to the base. H. 440mm
\$1200 – \$1800
645. Paul and Fran Dibble
Large stoneware slab vase of 'zig zag' shape, with hand painted decoration of builders working on a skyscrapers, the reverse with abstract design, signed and dated 'Dibble, NZ Palmerston North, 17/5/81' within a trefoil leaf frame to the base [faults]. H. 440mm
\$200 – \$400



604



612



614



613



610

608

609



601



599



646. Len Castle
Stoneware pouring vessel with white glaze to interior, impressed mark. W. 150mm
\$100 – \$200
647. Guy Ngan
Untitled
Sculptural form in textured aluminium on black acrylic square base, impressed signature and numbered 6582. W. 450mm x H. 210mm
\$3000 – \$5000
648. Mirek Smisek
Large stoneware bowl with side handles, wax resist design, impressed mark. W. 300mm
\$200 – \$400
649. Barry Brickell
Stoneware bowl with pouring lip, impressed decoration to the inside rim, blue glazed exterior, cypher mark to the base. D. 300mm
\$200 – \$300
650. Len Castle
Stoneware dish of shallow rectangular shape with oatmeal glaze with iron spotting, impressed initials. Provenance: Castle family collection. L.610mm
\$300 – \$400
651. Len Castle
Stoneware dish, rectangular form with shino-type glaze, incised initials to the base. Provenance: Castle family collection. L.300mm
\$300 – \$400
652. Barry Brickell
Stoneware bowl decorated with a repeating cruciform design to the inside rim and with blue glazed exterior. D. 300mm
\$200 – \$300
653. Doreen Blumhardt
Stoneware dish of rectangular form with poured red dark blue and light blue glaze on a celadon ground, impressed marks and original sticker affixed to the base. 340 x 340mm
\$400 – \$600
654. Len Castle
Stoneware dish with shino glaze and combed decoration to the well, impressed initials. D. 300mm
An almost identical example illustrated: [Len Castle: Making the molecules dance](#), p. 202.
\$300 – \$400
655. Dennis O'Connor
Stoneware jug with tenmoku glaze, potters cypher to the base of the handle. H. 180mm
\$200 – \$300
656. Len Castle
Early stoneware dish with slip glaze on a blue ground. D. 140mm
\$300 – \$400
657. Len Castle
Large and impressive stoneware vase of ovoid shape with a fractured copper blue glaze, impressed initials to the base. H. 440mm
\$2000 – \$3000
658. Len Castle
Lava Lake bowl in matt black stained earthenware with sculptured cavetto and lava red glaze, impressed initials to the base. D. 400mm
\$2000 – \$4000
659. Len Castle
Hanging form discoidal vase with impressed decoration with umber pigmented textured surface, impressed initials. D. 270mm
\$450 – \$800
660. Warren Tippett
Large stoneware platter with impressed repeating flower head design, unmarked. Provenance: Purchased from a Wellington corporate collection. L.480mm
\$350 – \$500
661. Warren Tippett
Large stoneware bowl with jun type glaze to the well, impressed cypher mark to base. D. 320mm
\$200 – \$400
662. Margaret Ryley
Large stoneware bowl with textured surface, signed to base. H. 230mm D. 300mm
\$200 – \$300
663. Jim Greig
Stoneware sentinel vase, incised initials to base. H. 225mm
\$200 – \$300
664. Jim Greig
Unfolding form bowl, stoneware with oxide rubbed exterior and green ash glaze to the well. D.200mm
\$100 – \$200
665. Barry Brickell
Stoneware salt glazed jug. H. 230mm
\$250 – \$350
666. John Parker
Red glazed conical bowl artist's initial impressed to base. D. 200mm
\$200 – \$300
667. Emily Siddell
Lei
Pumice and cast glass. D.440mm
\$1000 – \$2000
668. David Murray
Gatherer
cast glass, 2/11
signed and dated '03
550 x 320 x 160mm
\$4000 – \$6000
669. Ann Robinson
Splitting Pod
cast glass, signed & dated '97
inscribed 1/1
H. 255mm
\$18 000 – \$22 000
670. Robyn Stewart
Large dung fired burnished bowl, the rim modelled in a Koru design [restored firing crack from the top rim]. D. 580mm
\$1500 – \$2000
671. Len Castle
Large stoneware rectangular platter with alkaline blue glaze. L.550mm
\$1200 – \$1800
672. Len Castle
Early 1960s shino glazed lidded jar, unmarked. H. 160mm
\$400 – \$600
673. Len Castle
Early 1960s stoneware bowl with shino glaze, impressed mark, together with a smaller bowl. D.140mm
\$250 – \$350
674. Len Castle
Rectangular stoneware dish with impressed decoration to the well, ash glazed with tenmoku to the rim, impressed initials to the base. L.380mm
\$500 – \$800

675. Len Castle
Large stoneware square charger with blue glaze, impressed mark. W. 420mm
\$400 – \$600
676. Wi Taepa
Squat globular vase with stained grey crackled glaze, decorated with carved Maori and geometrical designs. H. 210mm
\$400 – \$800
677. Doreen Blumhardt
Stoneware standard lamp, the pierced baluster stem raised on a spreading foot. Provenance: Doreen Blumhardt Collection. H.1260mm
\$200 – \$400
678. Len Castle
Stoneware wine goblet. H. 165mm
\$200 – \$300
679. Ruth Castle
Check Dish, fine rattan core dyed with Condys crystals. D. 380mm
\$150 – \$250
680. John Parker
Grooved white stoneware bowl. Impressed potter's initials to the base D.260mm x H.180mm
\$200 – \$400
681. Len Castle
Bottle vase with shino glaze. Impressed initials. H.200mm
\$100 – \$200
682. Len Castle
Volcanic Bomb, earthenware with red lava glaze to the interior. Impressed initials. L.200mm
\$300 – \$500
683. Len Castle
Sea secret, earthenware with textured surface and blue alkaline glaze to the well. Impressed initials. D.160mm
\$200 – \$400
684. Len Castle
Fossil, earthenware with textured surface. Impressed initials. L.160mm
\$200 – \$300
685. Len Castle
Sea secret, earthenware with textured surface and blue alkaline glaze to the well. Impressed initials. D.180mm
\$200 – \$400
686. Len Castle
Sea secret, earthenware with textured surface and blue alkaline glaze to the well. Impressed initials. D.170mm
\$200 – \$400
687. Len Castle
Hanging form stoneware bottle vase with textured surface. D.250mm
\$250 – \$350
688. Len Castle
Dished form, earthenware unglazed ochre and umber pigment. Impressed initials to the base. 410 x 220mm. *Illustrated Len Castle Potter. P.180*
\$300 – \$500
689. Barry Brickell
Tall stoneware bottle vase of organic form with blue, brown and green salt glaze. Impressed potters cypher to the base. H.640mm
\$700 – \$1200
690. Warwick Freeman
A pair of ebonised earrings with captured bone discs, together with a pair of amethyst and paua shell earrings.
\$300 – \$500
691. Paul Fisher
Stoneware vase, thick kaki glaze with panels with poured tenmoku glaze and blue design, incised mark. H. 210mm
\$100 – \$200
692. Barry Brickell
Stoneware vase, brown salt glaze, moulded spiral design to the rim, impressed mark. H. 295mm
\$250 – \$350
693. Len Castle
Large stoneware vase, tenmoku over ash glaze with incised design, impressed mark. H. 290mm
\$800 – \$1200
694. Paul Fisher
Stoneware vase, wax resist decoration, incised mark. H. 220mm
\$100 – \$200
695. Paul Fisher
Large pottery jar, tenmoku glaze and wax resist plant form decoration, incised mark. H. 385mm
\$200 – \$400
696. Paul Fisher
Stoneware vase, tenmoku glaze and wax resist stylised floral decoration, incised mark. H. 235mm
\$150 – \$250
697. Paul Fisher
Stoneware shaped vase, black mottled ash glaze, incised mark. H. 200mm
\$150 – \$250
698. Paul Fisher
Stoneware bottle vase, with painted butterflies over a grey ash glaze, incised mark. H. 195mm
\$50 – \$100
699. Jova Rancich
Pottery posy vase, covered in a rich green, blue and brown majolica-type glaze, impressed marks. H. 200mm
\$800 – \$1200
700. Jova Rancich
Small pottery oval vase, covered in a rich multi-coloured majolica-type-type glaze, impressed marks. H. 85mm
\$100 – \$200
701. Jova Rancich
Small pottery squat vase with unusual iridescent black lustre glaze, impressed mark. H. 110mm
\$100 – \$200
702. Jova Rancich
Pottery cylindrical vase, covered in a rich multi-coloured majolica-type glaze, impressed marks. H. 130mm
\$100 – \$200
703. Jova Rancich
Two small pottery vases of squat shape, both with green majolica-type glaze, both with impressed marks. H. 65mm max
\$100 – \$200
704. Jova Rancich
Small pottery squat vase, with green, blue and red majolica-type glaze, impressed marks. H. 75mm
\$100 – \$200
705. Jova Rancich
Small pottery vase of compressed globular shape, with a mottled rich green glaze, impressed marks. H. 55mm
\$50 – \$100
706. Jova Rancich
Important large pottery tray, made for the NZ Centennial Exhibition, covered in a mottled rich green glaze, inscribed to the base 1940, impressed mark. D. 370mm
\$1000 – \$2000
707. Jova Rancich
Large pottery fat body jug, with strap handle, covered with a rich mottled green glaze to the exterior, the interior with yellow glaze, impressed mark. H. 200mm
\$800 – \$1200
708. Jova Rancich
Pottery fat body jug with multi-coloured majolica-type glaze, unmarked. H. 130mm
\$500 – \$800
709. Jova Rancich
Pottery fat body jug, with strap handle, covered with a rich brown lustre glaze, impressed marks. H. 130mm
\$250 – \$350



669



668



647



710. Jova Rancich
Pottery posy vase, with red, green and blue majolica-type glaze, impressed marks. H. 140mm
\$350 – \$500
711. Jova Rancich
Two small pottery squat vases, the first with cream glaze over the slight ribbed body, the second with yellow glaze, both with impressed marks. H. 70mm
\$50 – \$100
712. Jova Rancich
Large pottery handled vase, covered with a cream crackled glaze, unmarked. H. 170mm
\$300 – \$500
713. Jova Rancich
Tall cylindrical pottery vase, with mottled olive green glaze, impressed marks. H. 240mm
\$200 – \$300
714. Jova Rancich (attributed)
Large pottery tankard, with rich mottled brown lustre glaze, unmarked. H. 255mm
\$100 – \$200
715. Jova Rancich (attributed)
Ribbed cylindrical pottery vase, with rich mottled green lustre glaze, unmarked. H. 160mm
\$50 – \$100
716. Jova Rancich
Cylindrical pottery vase with green, blue and purple majolica-type glaze, impressed marks. H. 170mm
\$100 – \$200
717. Jova Rancich
Tall tapering pottery vase with olive green glaze, impressed marks to the base. H. 240mm
\$100 – \$200
718. Jova Rancich
Small pottery jug, multi-coloured majolica-type glaze, impressed marks. H. 65mm
\$100 – \$200
719. Jova Rancich
Small pottery jug with multi-coloured majolica glaze, impressed marks. H. 110mm
\$100 – \$200
720. Jova Rancich
Pottery jug with mottled blue, green, yellow and brown glaze, impressed mark to the base. H. 200mm
\$200 – \$400
721. Olive Jones
Stoneware dish with koruru decoration, celadon glaze, signed and inscribed 'NZ 1940'. D. 95mm
\$300 – \$500
722. Olive Jones
Green glazed squat vase, signed. H. 105mm
\$100 – \$200

723. Briar Gardner
Pottery vase of compressed ovoid form, with partial mottled green and brown glaze to the shoulder, incised signature to the base. H. 100mm
\$100 – \$200
- ## The Statements Gallery Collection
724. Graeme Storm
Large shallow stoneware bowl, copper barium based glazes, impressed mark. D. 520mm
\$300 – \$500
725. Mike McGregor
Large deep filigrana glass bowl, with green and red design and yellow lip wrap. D. 390mm
\$100 – \$200
726. Suzanne Butson
Matisse Vase, porcelain, shaped handles, still life decoration. H. 315mm
\$200 – \$300
727. Suzanne Butson
Striped Chalice, porcelain, applied handles. W. 260mm
\$200 – \$300
728. Peter Raos
Monet Collection blown glass vase, finely detailed with floral design. H. 180mm
\$100 – \$200
729. Peter Raos
Tall blue glass vase with cobalt inner-facing, signed. H. 280mm
\$100 – \$200
730. Peter Raos
Leaf Vase, red glass with internal green leaf design. H. 185mm
\$100 – \$200
731. Gary Nash
Large filigrana flattened glass vase, with cobalt lip wrap, signed and dated 2000. H. 340mm
\$300 – \$500
732. Rick Rudd
Raku fired teapot of scrolling form. H. 250mm
\$200 – \$300
733. Rick Rudd
Raku fired teapot with straight lines. W. 290mm
\$200 – \$300
734. Rick Rudd
Raku fired teapot of bird form with a large bronze glazed cross-shaped knob. W. 280mm
\$250 – \$350
735. Rick Rudd
Raku fired teapot of circular form. W. 210mm
\$200 – \$300
736. Estelle Martin
Anagama fired discoid stoneware vase partially covered with ash glaze, incised marks. H. 170mm
\$300 – \$500

737. Estelle Martin
Anagama fired rounded stoneware vase, incised marks. H. 230mm
\$400 – \$600
738. Doreen Blumhardt
Slab built vase with flambé red poured glaze decoration over iron oxide ground, impressed mark. H. 430mm
\$400 – \$800
739. Steve Fulmer
Large stoneware bowl with yellow and blue abstract design. D. 450mm
\$100 – \$200
740. Bruce Martin
Large Anagama fired tsubo (storage jar), partially covered with ash glaze, incised marks. H. 390mm
\$500 – \$800
741. Gary Nash
Black baluster glass vase with gold and silver leaf decoration, signed and dated '11. H. 215mm
\$80 – \$120
742. Gary Nash
Sandblasted blue and brown filigrana glass bowl, signed and dated '07. D. 280mm
\$200 – \$300
743. John Penman
Two matching large ivory cream and brown conical glass bowls, both signed, one dated 2007. D. 230mm
\$100 – \$200
744. Graeme Storm
Two matching stoneware gourd forms with lustre glaze. H. 140mm
\$200 – \$300
745. Suzanne Butson
Country Altar, tall stoneware vase with applied lily and roses decoration, signed. H. 455mm
\$300 – \$500
746. Estelle Martin
Stoneware vase, anagama fired, partially covered with green ash glaze, incised marks. H. 180mm
\$300 – \$500



Conditions of sale

Please note: it is assumed that all bidders at auction have read and agreed to the conditions described on this page. ART+OBJECT directors are available during the auction viewing to clarify any questions you may have.

1.

Registration: Only registered bidders may bid at auction. You are required to complete a bidding card or absentee bidding form prior to the auction giving your correct name, address and telephone contact + supplementary information such as email addresses that you may wish to supply to ART+OBJECT

2.

Bidding: The highest bidder will be the purchaser subject to the auctioneer accepting the winning bid and any vendor's reserve having been reached. The auctioneer has the right to refuse any bid. If this takes place or in the event of a dispute the auctioneer may call for bids at the previous lowest bid and proceed from this point. Bids advance at sums decreed by the auctioneer unless signaled otherwise by the auctioneer. No bids may be retracted. The auctioneer retains the right to bid on behalf of the vendor up to the reserve figure.

3.

Reserve: Lots are offered and sold subject to the vendor's reserve price being met.

4.

Lots offered and sold as described and viewed: ART+OBJECT makes all attempts to accurately describe and catalogue lots offered for sale. Notwithstanding this neither the vendor nor ART+OBJECT accepts any liability for errors of description or faults and imperfections whether described in writing or verbally. This applies to questions of authenticity and quality of the item. Buyers are deemed to have inspected the item thoroughly and proceed on their own judgment. The act of bidding is agreed by the buyer to be an indication that they are satisfied on all counts regarding condition and authenticity.

5.

Buyers premium: The purchaser by bidding acknowledges their acceptance of a buyers premium of 15% + GST on the premium to be added to the hammer price in the event of a successful sale at auction.

6.

ART+OBJECT is an agent for a vendor: A+O has the right to conduct the sale of an item on behalf of a vendor. This may include withdrawing an item from sale for any reason.

7.

Payment: Successful bidders are required to make full payment immediately post sale – being either the day of the sale or the following day. If for any reason payment is delayed then a 20% deposit is required immediately and the balance to 100% required within 3 working days of the sale date. Payment can be made by Eftpos, bank cheque or cash. Cheques must be cleared before items are available for collection. Credit cards are not accepted.

8.

Failure to make payment: If a purchaser fails to make payment as outlined in point 7 above ART+OBJECT may without any advice to the purchaser exercise its right to: a) rescind or stop the sale, b) re offer the lot for sale to an underbidder or at auction. ART+OBJECT reserves the right to pursue the purchaser for any difference in sale proceeds if this course of action is chosen, c) to pursue legal remedy for breach of contract.

9.

Collection of goods: Purchased items are to be removed from ART+OBJECT premises immediately after payment or clearance of cheques. Absentee bidders must make provision for the uplifting of purchased items (see instructions on the facing page)

10.

Bidders obligations: The act of bidding means all bidders acknowledge that they are personally responsible for payment if they are the successful bidder. This includes all registered absentee or telephone bidders. Bidders acting as an agent for a third party must obtain written authority from ART+OBJECT and provide written instructions from any represented party and their express commitment to pay all funds relating to a successful bid by their nominated agent.

11.

Bids under reserve & highest subject bids: When the highest bid is below the vendor's reserve this work may be announced by the auctioneer as sold 'subject to vendor's authority' or some similar phrase. The effect of this announcement is to signify that the highest bidder will be the purchaser at the bid price if the vendor accepts this price. If this highest bid is accepted then the purchaser has entered a contract to purchase the item at the bid price plus any relevant buyers premium.

Important advice for buyers

The following information does not form part of the conditions of sale, however buyers, particularly first time bidders are recommended to read these notes.

A.

Bidding at auction: Please ensure your instructions to the auctioneer are clear and easily understood. It is well to understand that during a busy sale with multiple bidders the auctioneer may not be able to see all bids at all times. It is recommended that you raise your bidding number clearly and without hesitation. If your bid is made in error or you have misunderstood the bidding level please advise the auctioneer immediately of your error – prior to the hammer falling. Please note that if you have made a bid and the hammer has fallen and you are the highest bidder you have entered a binding contract to purchase an item at the bid price. New bidders in particular are advised to make themselves known to the sale auctioneer who will assist you with any questions about the conduct of the auction.

B.

Absentee bidding: ART+OBJECT welcomes absentee bids once the necessary authority has been completed and lodged with ART+OBJECT. A+O will do all it can to ensure bids are lodged on your behalf but accepts no liability for failure to carry out these bids. See the Absentee bidding form in this catalogue for information on lodging absentee bids. These are accepted up to 2 hours prior to the published auction commencement.

C.

Telephone bids: The same conditions apply to telephone bids. It is highly preferable to bid over a landline as the vagaries of cellphone connections may result in disappointment. You will be telephoned prior to your indicated lot arising in the catalogue order. If the phone is engaged or connection impossible the sale will proceed without your bidding. At times during an auction the bidding can be frenetic so you need to be sure you give clear instructions to the person executing your bids. The auctioneer will endeavour to cater to the requirements of phone bidders but cannot wait for a phone bid so your prompt participation is requested.

D.

New Zealand dollars: All estimates in this catalogue are in New Zealand dollars. The amount to be paid by successful bidders on the payment date is the New Zealand dollar amount stated on the purchaser invoice. Exchange rate variations are at the risk of the purchaser.

Artist's Index

New Collectors Art
Auction No. 71

- Aberhart, Laurence 82, 84, 86, 87, 180
Albrecht, Gretchen 45, 77, 167, 199, 213
Anderson-Scott, Melissa 216
Angus, Rita 159
Apple, Billy 41, 172
Barker, David 211
Basher, Martin 119
Bizumic, Mladen 89
Bradley, Marissa 200
Buchanan, Dean 209, 214
Cauchi, Ben 144
Chilcott, Gavin 171
Clairmont, Philip 14, 16, 26, 100
Cleavin, Barry 22
Collett, Eugene 56
Conradi, Nina 107, 108
Cotton, Shane 70, 71
Cousins, James 176
Crook, Gordon 212
Culbert, Bill 78, 83
Culbert, Pip 163
Currin, Gary 170
Dashper, Julian 165
Dawson, Neil 127
Dibble, Paul 123
Driver, Don 13, 15
Dutch, Ted 173, 218
Elliott, Thomas 179
et al. 175
Feu'u, Fatu 136
Flaws, Fane 12, 201
Foreman, Nicky 118
France, Pat 7, 8
Fraser, Jacqueline 50, 177
Frizzell, Dick 10, 38, 39, 49, 101, 137, 143, 164, 169, 191
George, Darryn 113
Gibson, Robyn 95
Gimblett, Max 67
Gormley, Nicki 93
Hall, Lester 206
Hammond, Bill 152, 153
Harper, Melinda 104
Harris, Jeffrey 32, 97, 120, 142, 190
Harrison, Michael 162
Henderson, Derek 90
Hollings, Russell 99
Hos, Kes 17, 19
Hotere, Ralph 27, 69, 73, 116, 145, 182
Hurley, Gavin 52
Jackson, Kase 98
Jahnke, Robert 134
Kosuth, Joseph 187
Lane, Tony 36, 166
Latham, Peter 96
de Lautour, Tony 6, 9, 131
Lee, Jae Hoon 88, 91
Leek, Saskia 117
Left, Ron 147
Lett, Barry 158
Lewer, Richard 37, 188
Lloyd, Trevor 185
Lush, Sally 94
McCahon, Colin 146, 168
McIntyre, Mary 103, 210
McIntyre, Simon 195, 197
McLeod, Andrew 156, 183
McLeod, Robert 21
McPhee, Charles 189
Madden, Peter 81
Maddox, Allen 68, 135, 140, 157, 160
Madill, Katherine 51
Major, I 55
Matthews, Heather 43
Mrkusich, Milan 65, 66
Nigro, Jan 151
Nisbet-Smith, Alastair 18
Oxborough, John 204
Palmer, Stanley 5, 115
Papas, John 23, 48
Pardington, Fiona 85
Parkes, Miranda 112
Paterson, Reuben 29, 148
Peebles, Don 150
Pick, Seraphine 75
Pond-Eyley, Claudia 105
Pound, Patrick 154
Pule, John 25, 139, 155, 161, 181
Reed, William 72
Reithmaier, Anne 186, 192
Reynolds, John 42, 44, 114, 178, 184, 207, 208
Richards, Trent 174
Ritchie, John 215
Ritchie, Ross 106
Robinson, Peter 76
Scott, Ian 28, 111, 198
Smith, Peter James 132
Smither, Michael 1, 2, 74
Straka, Heather 33
Stringer, Terry 124, 125, 128, 130
Sutton, William 141
Tan, Yuk King 79
Tapper, Garth 121, 133, 149
Taylor, Alan 194
Taylor, E. Mervyn 31
Tekela-Smith, Sofia 11, 12
Thompson, Richard 109
Thomson, Elizabeth 126
Thomson, Jeff 122
Tocher, Hamish 80
Trusttum, Philip 20, 203
Wall, Nick 40
Warr, Malcolm 53
Waters, EB 57
Webb, Marilyn 217
Weeks, John 205
Westra, Ans 92
Wheeler, Colin 3
White, A. Lois 59, 60, 61, 62, 63, 64
White, Robin 30
Wichman, Peter 4
Williams, Mervyn 196
Wiseman, Hilda 202
Wong, Brent 138
Wood, Julie 193
Woollaston, Toss 34, 35
van der Pohl, Rudy 110
van Hout, Ronnie 24
Yul Oh, Seung 46, 47

OLYMPIA



The background of the page is a vibrant, abstract geometric artwork. It features large, angular shapes in primary colors (red, blue, yellow, black) and earthy tones (brown, tan). The shapes are defined by thick black outlines, creating a dynamic, fragmented composition. The overall style is reminiscent of mid-century modern or pop art.

**NEW
COLLECTORS
ART**

Tuesday 22 October 2013 at 6.30pm

**RARE TOYS INCLUDING
THE MARYANNE WEALLEANS
COLLECTION**

Thursday 24 October 2013 at 5.00pm

**NEW ZEALAND AND
INTERNATIONAL STUDIO
CERAMICS AND GLASS**

Thursday 24 October 2013
at 6.45pm