

Rare Toys

Antique Toys and Collectables from the Collection of Warwick Henderson & the Bob Geerligs Collection of tinplate and NZ toys

ART
OBJECT

Auction – Wednesday 10 December at 1.00pm

3 Abbey Street, Newton, Auckland

Telephone: +64 9 354 4646

Freephone: 0800 80 60 01

All Toys illustrated online at
www.artandobject.co.nz

PART 1 – WARWICK HENDERSON COLLECTION

Antique Games 1 – 40

Other Toys 41 – 49

Bakalite and Plastic Toys 50 – 80

Train Sets and Accessories 81 – 88a

Rubber Toys 89 – 93

Cast Iron Toys 94 – 106

Fun Ho! Toys 107 – 133

Die Cast 134 – 159

Bakalite and Catalin Radios 160 – 169

VIEWING

Sunday 7 December 11.00 – 4.00pm

Monday 8 December 9.00 – 5.00pm

Tuesday 9 December 9.00 – 5.00pm

Wednesday 10 December 9.00am – 12 noon

PART 2 – THE BOB GEERLIGS COLLECTION

Tinplate Planes and Rockets 170 – 186

Trains 187 – 210

Boats 211 – 226

Cars and Vehicles 227 – 272

Further Planes and Helicopters 273 – 275

Motorcycles 276 – 288

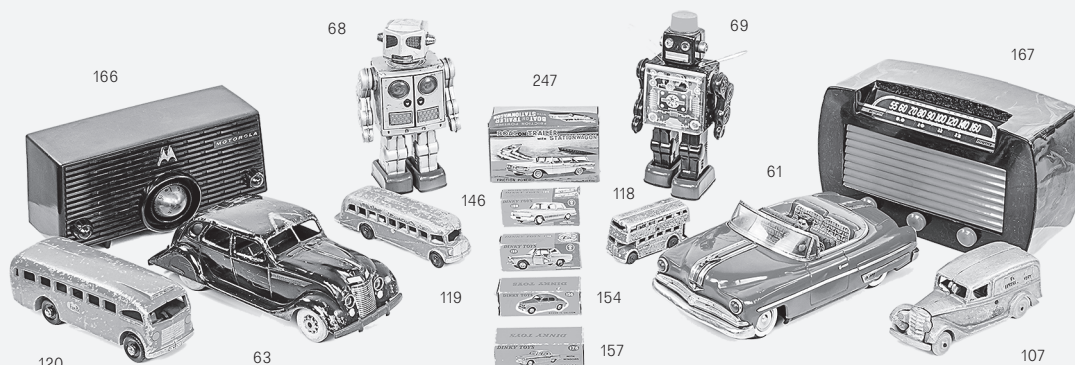
Die Cast 289 – 312

Tri-Ang and Tonka 313 – 318

Steam Engines 319 – 329

Novelty figures and Games 330 – 356

Box Lots 357 – 366



A+O's final sale for the year is a delight for Toy collectors. Warwick Henderson is most well-known to New Zealand art fans as the founder and director of the Warwick Henderson Gallery which for 26 years has been a feature of the Parnell and Auckland Gallery scenes. Warwick is also a well-known author, his 2012 publication *Behind the Canvas Book – An insider's guide to the New Zealand art market* is required reading for art followers.

His other passion for over four decades has been rare toys from the late 19th century to the mid 1950s. Warwick is an internationally regarded authority on rare toys and in mid 1990s curated popular New Zealand touring exhibitions entitled *The Toy Show* and *The Games Show*. Many of the items included in the December catalogue have been in archival storage since these exhibitions.

Warwick's collection includes fine examples of iconic toy marques such as Carette, Bing, Marx, Arcade, Lionel, Kingsbury, Dinky and of course New Zealand's own Fun Ho! The catalogue will also include extremely desirable Bakelite & Catalin radios dating to the 1930s.

Warwick's collection is complemented by the collection of Bob Geerligns. In his later years Bob Geerligns re-connected to a boyhood love of toy collecting and was a regular at swap-meets and toy events around the country. A frequent traveller to Europe, Bob always returned with some rare treasure sourced from European dealers and rare toy stores and fairs. The Geerligns collection has been in storage for nearly twenty years and includes boxed, mint or fine examples of New Zealand tinplate, Japanese tinplate as well as Dinky, Lone Star, Mettoy and Lehmann Bros. All lots from the Bob Geerligns collection to be offered at no reserve unless indicated with an asterisk*



Antique Toys and Collectables from the Collection of Warwick Henderson

Antique Games

- 1 Spin Golf. A quality English boxed game from the 1920s with fold out hard board colourfully illustrated course; includes five steel chromed teetotum shaped clubs – brassie, mid-iron, mashie, niblick and putter. Two bone dice and markers. Flaps and box worn. 350 x 350mm \$100 – \$200
- 2 Motor Car Race – London to Brighton by JW Spears and JAP, made in Bavaria c1898. Four leaf fold out illustrated board, with four mint condition, hand painted metal veteran car flats, each modelled on an 1896 Richard Levasseur vehicle, one spinner card. One of the earliest board games depicting the arrival of the motor vehicle and the introduction of the 1896 London to Brighton Run. Flaps to box worn, 260 x 390mm \$150 – \$300
- 3 Baccalite. The electric Roulette Game by Chad Valley, England c1920s. Unusual game with a pressed steel roulette wheel with five lighted numbers (untested). Box 370 x 270mm \$100 – \$150
- 4 Peter Rabbit's Race Game by Beatrix Potter published by Frederick Warne & Co Ltd c1917. Beautifully illustrated four panel board by Potter includes four detailed lead animals, one bone dice and one wooden shaker. Boxed taped. 390 x 310mm. A similar set is in the Victoria and Albert Museum, London. \$200 – \$300
- 5 Hustleme. The New Obstacle Race Game c1917, made in England. Great period graphics, never used. One torn flap. 260 x 410mm \$50 – \$100
- 6 Circus Puzzle Box, c1900s. Four superbly lithographed jigsaw puzzles. Milton Bradley, USA in original box with torn flaps. 470 x 330mm \$100 – \$200
- 7 Large English Bakelite and Chromed steel roulette wheel in excellent condition. D.400mm \$200 – \$300
- 8 Spin Jenny, 19th century English wooden roulette type game, missing wooden balls. Stamped 'CH Kingsford, Leather and Sports Goods, 164 Queen Street, Auckland.' 320 x 320mm \$50 – \$100
- 9 Game of Boom or Bust, Parker Brothers USA, 1951. Monopoly type game where players can land on 'Smart Realty Co' or 'The Never Run Bus Company' etc. Tape to flaps otherwise excellent condition \$50 – \$100
- 10 Ping Pong, boxed set by Parker Bros, USA dated 1902. Complete set, with wooden bats, (Battledores), net and box of six balls. Includes Tournament Rule book and Parker Brothers flyer. This superb set is possibly unused, box flaps torn and frayed \$200 – \$300
- 11 New Compendium of Games, Germany, c1890. Wooden cased set with four panel hardboard fold out board, beautifully lithographed race game one side, Ludo and Checkers on reverse. Assortment of turned wooden draughts and other pieces with graphite marker and blackboard. 340 x 180mm \$150 – \$250
- 12 Ally Sloper, Milton Bradley 1907. Superb lithography on box (flaps torn) and die cut clown target. Missing guns and three balls. 250 x 360mm \$25 – \$50
- 13 Spoil Five, 1920s by Chad Valley England. Strategy type game with wooden pegs. Box flaps taped and worn. 340 x 270mm \$25 – \$50
- 13a New Pretty Village, 1909 by Milton Bradley USA. Superbly lithoed die-cut village depicting both horse drawn and veteran cars. Possibly unplayed with figures still uncut from card. 320 x 320mm \$100 – \$150
- 14 Lotto, Wooden boxed game with glass and wooden pieces dated 1895. Box face dented and worn. Contents appear unused. 280 x 250mm \$100 – \$150
- 15 Pegity, Strategy game with wooden pegs by Parker Bros, USA, c1920s. Box flaps torn \$20 – \$40

16 Mickey's Tug Boat Shooting Game, 1950 by Chad Valley, England. Die cut figures with gun, colourful lithography, flaps torn. 380 x 270mm \$40 – \$50

17 Jeu de course, wood cased horse racing go round game by MJ & Cie, France, c19th century. Six hand painted metal horses revolve on spring loaded turntable. Not working properly although horses still revolve manually. Box and contents play worn. 250 x 250mm \$100 – \$200

18 A collection of early 20th century puzzles and card games including two Sherlock Holmes games by Delgard, London. Two evening party card games, two 'Can you Solve' card games by CWF London, Gibbs Dentritice jigsaw 'Defeat Decay', a stone puzzle. Made in Germany with Flapper illustration on the box, and two glass cased puzzles by R. Jounet, London. All excellent condition (10) \$100 – \$200

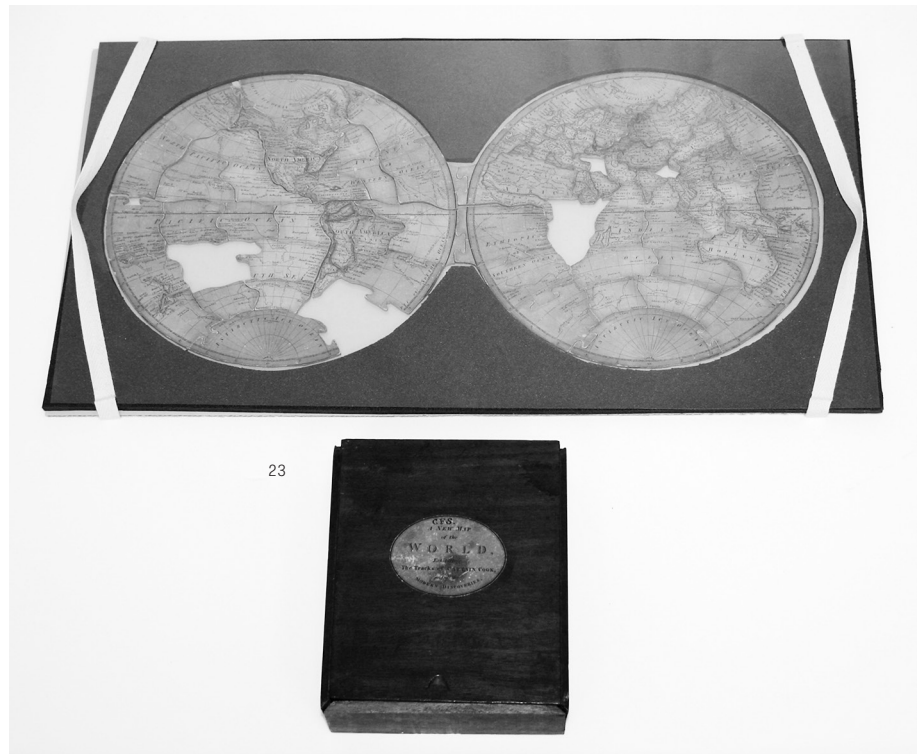
19 Three Politically incorrect games and one match card. 'The New Black Jack', 1950s tinplate D.50mm. 'Ten Little N. Boys', a tinplate puzzle in a tin, 19th century, 9.5 cm diameter, tin lithography faded. 'Buy Star Soap', a tinplate game with mirror on reverse, 5 cm diameter and a 1950 match card. 'Chicken Inn', USA with illustrated card matches, 55mm (4) \$100 – \$150

20 New Round Game of Tiddley Winks. Possibly 19th century by J Jaques, London, with instructions, bone counters and a turned and well finished maple cup. Box tarnished and paper loss to one corner. 120 x 90mm \$50 – \$75

21 A collection of early wooden games and tops. Four early wooden tops, one 90mm high, four ivory spinner tops, 40 – \$100mm. One brass spinner top, D. 100mm, one wooden turned dice shaker, one wooden tiddley wink cup, nine ring wooden hoopla toss game with a turned wood stand, 240mm and a sky raider wooden Diablo. Made in New Zealand c1940s. (12) \$100 – \$200

22 Table Tennis, a fine set by Spears Games, England c1930. With two wooden cork backed bats, a net and two balls, possibly unused. Flaps torn on box, otherwise excellent. 320 x 230mm \$75 – \$100

23 'A New Map of the World. Exhibiting the Tracks of Captain Cook and all the Modern Discoveries'. A dissected puzzle made in England circa 1790, missing three pieces. A wooden boxed set depicting a map of the world charting Cook's three voyages and the relevant dates, produced not long after his death in Hawaii (1779). The pieces are printed on paper on wood carved with a fret or marquetry saw. Jig saws not having been invented until the 19th century. Provenance: acquired at auction in London in the early 1990s \$500 – \$750



24 Two Rare 19th Century Wood Cased Games, Passmores laughable game of 'What'd ye buy' by Professor Punch (with a fine Mr Punch illustration), made by William Peacock, London, with illustrated cards, and a 'blocke and hammer' (Bell and Hammer) game with illustrated cards with stone or marble dice. 160 x 130mm approx. (2) \$150 – \$200

25 The Most Remarkable Events in the Life of Moses and Travels of the Children of Israel from Egypt to the Promised Land. A rare, wood cased dissected puzzle with hand coloured engraved illustrations inc. a matching hand coloured story board guide laid onto canvas. By Darton and Harvey, London, dated 1813. Play worn but very rare \$500 – \$750

26 Prophecy and Fulfilment, a wooden boxed six sided, 35 piece puzzle block set with handcoloured engraving c1820. Reputedly made in Germany. Play worn, very rare 270 x 230mm \$250 – \$300

27 Listen In – The Great Wireless Game by Chad Valley, England c1920s. Nicely lithographed fold out board and box. 260 x 180mm \$50 – \$75

28 The Scout Game, by MiP Ltd c1920s. Nicely illustrated fold out 660 x 190mm board. Separate game piece box, 100 x 130mm, with cardboard figures, bone dice and shaker in good condition, c1920s. \$75 – \$100

29 The Grand National Steeplechase Game by Chad Valley, England c19th century. Superb four panel fold out board game, with six hand painted lead racehorses, shakers and two bone

dice in good condition with some staining to board and two flaps missing on playing piece box. 320 x 360mm \$100 – \$150

30 Backgammon. Bakelite boxed game with 'Good Fortune' emblem moulded on each piece by Cutler and Saleeby, Springfield, Massachusetts, USA dated 1930. Red and black Bakelite playing pieces measure 25mm in diameter, with shaker and rule book in unused condition. Box 140 x 90mm \$200 – \$250

31 The Trigonette Puzzle, Map of the War by F Waller, London. Boer war map on one side with superb lithographed Japanese baby in bedroom scene on reverse of jigsaw puzzle advertising Mellins baby food c1900. Box 140 x 100mm Puzzle box 200 x 150mm and an 'Halma' strategy board game by Chad Valley, England. Both very good condition. 180 x 145mm (2) \$100 – \$150

32 Snakes and Ladders. Rare tinplate with superbly lithoed board by Burnett of England, c1900. Depicts snake charmer and clown with some scratching to reverse of board, playing surface excellent. 280 x 280mm \$75 – \$100

33 Pirates. Chad Valley three panel illustrated board game, c1920s. Includes four elegant dreadnought ship style lead playing pieces, one bone dice and wood shaker in excellent condition \$50 – \$75

34 The Bonny Aberdonian. Ring toss quoits game by Spears, England dated 1929 in excellent condition with detailed lithography. 220 x 160mm. Plus a 'Skilly' snooker type game with clay balls, a snooker cue and nicely

- lithographed arched bridge target by Chad Valley c1900. Box end flap loose. 400 x 90mm. (2)
\$75 – \$100
- 35 Post Card Lotto by Milton Bradley, USA, 1910. Includes photographic cards of international landmark buildings inc. the Louvre, Statue of Liberty & Windsor Castle. 250 x 240mm. Plus 'The Popular Game of Lotto', in a wooden lithographed box with wooden counters, c1900, made in England. 80 x 100mm. Some taping to box.(2)
\$50 – \$75
- 36 A Cream Bakelite Cased Crib Set with metal counters and a 'Bicycle' card set, made in USA, c1930s. A boxed Bakelite 'Roulette' game and a 'Tournament' boxed wooden checkers set, c1920s by the Embossing Company, USA. (3)
\$75 – \$100
- 37 Joue de Steeplechase horse race game, French c1900. Boxed set with wooden fences, paper track, wooden cup and dice, plus six lead racehorses (not original to game). 640 x 170mm
\$25 – \$50
- 38 The Funniest Table Game Out Coonie Flap by Spears Games, made in Bavaria. 19th century tiddly winks type game with seven bone counters and colourful lithography. Striking advertisement for six other games on inside of box cover. 290 x 200mm
\$100 – \$150
- 39 Motoring board game by Spears Games, England, c1930s. Colourfully illustrated two panel fold-out board with no playing pieces. 250 x 185mm
\$50 – \$100
- 40 Picture Lotto by Jacques, London, 19th century. Boxed Lotto type game with coloured litho picture cards. 260 x 135mm
\$50 – \$100

Other Toys

- 41 Felix the Cat, rare 1920s with wooden joints & leather ears. Marked Felix copyright by Pat Sullivan. Pat. June 23 1925. Superb original condition. H. 100mm
\$250 – \$350
- 42 Denis the Menace. A rare hard cover first edition cartoon book by Hank Ketcham along with a 1959 vinyl plastic Denis the Menace figure. Both in excellent condition overall although the book has small damage to top of spine and torn flyleaf cover. H. 180mm
\$200 – \$250
- 43 The Coronation cut-out story book by Dean of England, 1953. Unused, some foxing. 360 x 250mm
\$25 – \$50
- 44 Little Golden Books. 15 x books, 'Peter Pan', 'The Little Mermaid', 'Little Crow', etc.
\$25 – \$50

- 45 Archie and Superman. Two VHS 1950s cartoon films
\$20 – \$30
- 46 Over 80 Glass Marbles in various colours and patterns
\$50 – \$100
- 47 Rex, a pressed steel top made by RJ Kuttner, Wellington (NZ). Mint condition in original box. D. 80mm and a 'Dandy' gyroscope top dated 1923 in steel and original box with string and instructions. (2)
\$100 – \$150
- 48 11 Cowboys and Indians lead figures(England) inc. horse and riders in excellent condition (11)
\$50 – \$100
- 49 1930 Packard Roaster 1:22 scale die cast kit by Hubley Toys, USA, c1950s. Unassembled in original carded box with instructions. L. 300mm. (2)
\$100 – \$150

Bakelite and Plastic Toys

- 50 Bakelite Boat. L 210mm and a Fethalite 1940s plastic sedan. L100mm. (2)
\$75 – \$100
- 51 Car Ju, 1930s German Bakelite clockwork convertible after BMW. A rare Bakelite toy with opening doors, dickey seat and manual indicators. AF. Loose dickey seat, horn and c/w n/w. L. 200mm
\$400 – \$500
- 52 Bimbo, 1950s early yellow plastic clockwork music box with unusual Medieval moving images depicting a cat story. Set in the form of an early radio or TV. A rare working toy in the original box which states made by 'Lador', Germany. L. 200mm
\$200 – \$300



- 53 Bakelite Chess Set by Lowe of USA, c1930s. An outstanding large size set housed in leatherette & felt lined travelling case with a Lucite variegated brown handle. Set in cream and red playing pieces. A crack (repaired) in the crucifix of one king, otherwise excellent condition. Playing pieces measure between 100mm (4") and 50mm (2").
\$400 – \$600

- 54 3 1950s Plastic Vehicles, 1956 Buick coupe, red/orange. L. 220mm, 1950 convertible in pale green. L. 210mm & a 1940s 'Fethalite' plastic Buick sedan and a 'Marks' plastic 1950s space water pistol
\$50 – \$100
- 55 Woodie c/w plastic Sedan by Irwin Plastics, USA, 1950, in red/cream in original box. A superb early plastic vehicle in pristine condition. L. 320mm
\$75 – \$100
- 56 Plastic Convertible by Irwin Plastics, USA, 1950 in red/blue. Features opening door, roof and trunk with driver. Friction (roof slight warp). In original distressed box. A superb early plastic vehicle. L. 230mm
\$150 – \$200
- 57 Mickey Mouse Projector by Mattel, 1950s in original distressed box. Missing screen and films. L. 230mm
\$75 – \$100
- 58 Unusual American plastic motor mower with salt and pepper shaker set in red/white, 1950s. L. 100mm
\$25 – \$50
- 59 Lerwick Bomber, 1940s Bakelite. A very rare identification model produced in WWII. Only 21 actual Lerwick were made as they proved unreliable. Fin repaired
\$200 – \$300



- 60 Cadillac Sedan, 1960s Japanese friction drive tinplate in red/white. One of the largest tin toy autos ever made. Some tarnish to bright work, professional repaint to roof, missing aerial otherwise in good plus condition. L. 550mm
\$350 – \$450



- 61 Open Top 1953 Pontiac. 'Fat Car' by Ichiko of Japan, complete with driver in red. Very rare convertible version in excellent condition. Regarded as one of the classic collectable tinplate cars. L. 360mm
\$800 – \$1000

73



- 62 Buick 8 Sedan. 1950s Japanese tinplate toy in green with extensive chrome bright work. In good plus condition with some scratching to roof. L. 260mm
\$200 – \$300
- 63 1937 clockwork Chrysler Airflow by Kingsbury Toys, USA. Pressed steel finished in maroon with battery operated headlights (untested). Extensive scratching to original paint and some bright work replaced. A rare and impressive 1930s toy. L. 350mm
\$500 – \$600
- 64 Santa reading tinplate baby book. Scarce clockwork Japanese tin toy in working condition. H. 100mm
\$50 – \$100
- 65 1954 Woodie friction drive Sedan by Marx, USA, with family of four including two dogs and detailed litho design. L. 280mm. Also an earlier 1930s Lonesome Pine caravan. L. 200mm. Classic American toy in good plus condition
\$200 – \$300
- 66 1937 Lincoln Zephyr Coupe by Kingsbury Toys, USA in remnant blue paint. Good but tarnished bodywork and replaced & correct rubber tyres
\$175 – \$200
- 67 Schuco 'Carl' tinplate motorbike and civilian rider with original key in original working condition. L. 130mm
\$200 – \$250
- 68 Attacking Robot, Japanese tinplate bat op by Horikawa, c1960s. Rare silver variant in good working condition. H. 290mm
\$150 – \$200
- 69 Attacking Robot, Japanese tinplate bat op by Horikawa, c1960s in black in original working condition, some rust to battery box. H. 290mm
\$150 – \$200
- 70 Schuco Tinplate c/w drummer n/w. H. 120mm and two penny Japanese tinplate whistles in the form of 1957 American coupes. L. 75mm
\$50 – \$75

- 71 Nutty Mad Indian, 1960s bat op Japanese tin toy by Marx Toys. Excellent condition with perished drum skin. H. 350mm
\$100 – \$150
- 72 Indian Joe, Japanese tinplate bat op by Nomura toys in good condition. H. 300mm
\$75 – \$100
- 73 An extremely rare 1920s German tinplate limousine by Bing finished in faux crocodile skin with brown fenders in working condition. This bizarre finish to auto coachwork in leatherette and other fabric was a brief fad in the 1920s. This toy was professionally restored by Tin Toy Works in the USA in 1990. Replaced rear doors, head lights, rear right fender and driver. Marked Gebruder Bing, Nuremburg N5461. L. 360mm
\$2000 – \$3000

74



- 74 An extremely rare tinplate limousine by Carette, Germany, c1910 in original condition with glass windows and original chauffeur. Some tarnish and loss to paintwork, & missing two rear doors. L. 270mm
\$2000 – \$3000
- 75 1930s friction Japanese tinplate sports car by Nomura in good condition. L. 120mm plus a 1950s German tinplate playworn Mercedes sedan. L. 230mm (2)
\$50 – \$75

- 76 Chrysler Airflow convertible with caravan, 1930s clockwork tinplate by Tri-ang Minic in near mint cond. L. 240mm
\$200 – \$300
- 77 Morris 8, Tri-ang Minic clockwork tinplate in working condition with key. L. 80mm and a newspaper vendor's trolley in red and cream, maker unknown. L. 100mm (2)
\$50 – \$75
- 78 No Lot
- 79 No Lot
- 80 No Lot

Train Sets And Accessories

- 81 A magnificent streamline style Lionel O Gauge 1930s Union Pacific – City of Denver nos 638, 637 x 2 & E636W, die cast and pressed steel passenger set of electric locomotive with three carriages in excellent condition. Includes laminated advertising brochure L. 1055mm
\$750 – \$1000



- 82 A superb and rare streamline style Lionel O Gauge 1930s Union Pacific – City of Salina Train set in aluminium finish, electric locomotive with two carriages Nos 752E, 753 and 754 in good plus original condition. L. 1170mm
\$750 – \$1000
- 83 3 1950s Lionel Lines O Gauge, 3 Pullman carriages in heavy brown plastic in good original boxes, flaps torn. Nos 2627, 2627, 2625. Each L. 380mm
\$250 – \$300
- 84 Vintage Railway accessories inc. a rare 19th century spring loaded tinplate water tower. L. 220mm. A set of Lionel chromed electric railway crossing bells. H. 220mm and eight pressed steel telegraph poles. (10)
\$100 – \$150
- 85 Glendale Railway Station c1950s American in detailed lithographed tin plate O gauge in pristine condition. 530 x 260mm
\$150 – \$200
- 86 Assortment of OO gauge accessories inc two figures, Triang advertising signs and buffer and three die cast signs. (8)
\$25 – \$50
- 87 American Train Set, c19th century in cast iron inc. locomotive N° 50 with tender and N° 411 Ivankhoe carriage (no wheels). Good castings in original condition. L. 530mm. (3)
\$150 – \$200
- 88 Railway Accessories and figures, 35 pieces, inc. lead and die cut railway signs, petrol pumps and various figures by Britains, Meccano etc.
\$100 – \$150

- 88a 4 Railway stations inc. Hornby Dublo art deco style station on cream, 2 Lionel tinplate villas nos. 189 & 191 and a Tri-Ang (Aus) small plastic 'Forbury Park'
\$100 – \$200

Rubber Toys

- 89 Large scale 1930s hard rubber Racer by Auburn Toys, USA in excellent condition. L. 160mm
\$150 – \$200
- 90 Two Streamline 1930s large scale hard rubber Racers By Arcor and Auburn, USA. Green Arcor in excellent & red Auburn in distressed condition. Each L.270mm (2)
\$100 – \$150
- 91 Three Streamline Hard Rubber Vehicles by Sun Rubber, USA. A coupe, a bus and a Woodie station wagon. All excellent condition. L. 100mm(3)
\$100 – \$150
- 92 Three Hard Rubber 1930s Vehicles by Auburn Rubber, USA inc. an orange racer. L. 160mm. A brown COE truck. L. 140mm. A blue sedan. L. 130mm. All excellent condition.
\$75 – \$100
- 93 No Lot

Cast Iron Toys

- 94 1930s Crosley radio money bank in cast iron by Kenton Toys in red, excellent condition. L.110mm
\$100 – \$150
- 95 Two 1930s cast iron Motorbikes by Hubley, USA. An orange crash car bike and rider. L.110mm, a blue cop bike and rider. L. 100mm. Excellent originals (2)
\$100 – \$150



- 96 1930s cast iron Pontiac Sedan and Trailer by Kenton Toys, USA in good plus condition. A rare cast iron set L. 210mm (2)
\$250 – \$300
- 97 Two cast iron 1930s vehicles. Arcade Stakebed Ford. L. 170mm, missing part of stakeside. Hubley Take Apart Sedan. L. 150mm Finished in blue and red in good original condition (2)
\$150 – \$200



- 98 1920s cast iron Model A Coupe with dickey seat (replaced) by Arcade Toys, USA. L. 170mm
\$250 – \$300
- 99 1920s Model T Ford Sedan by Arcade Toys, USA, some repairs and replacement parts. L. 160mm
\$50 – \$100
- 100 1920s cast iron pistol senator by Kenton Toys, USA with some tarnishing. L. 170mm
\$25 – \$50
- 101 No Lot
- 102 No Lot
- 103 Two cast iron Arcade 1930s Racers. Green example repainted with replaced wheels. Both L. 180mm
\$75 – \$100
- 104 Open seat racer by Hubley Toys, USA in silver and red. Original wheels loose, otherwise in good original condition L. 170mm
\$50 – \$100
- 105 1930s Diamond T cast iron tow truck by Hubley Toys, USA with a separate nickel grille and tow rig. L. 170mm
\$150 – \$200



- 106 A magnificent cast iron Indian 2 cylinder motor bike and side car with separate rider and passenger by Hubley Toys, USA. This superb example features detailed castings, including gilded twin engine, front wheel clicker, spoked wheels and original aluminium handle. Most of original gold decal remains. Hard to find in completely original condition L. 210 mm
\$850 – \$1250

Fun Ho! Toys

- 107 Fun Ho! 111a, large international panel van, rare yellow wheels, piece of rear casting missing. L. 240mm
\$300 – \$400

- 108 Fun Ho! 111, large van in original condition L. 190mm
\$300 – \$400



- 109 Fun Ho! 529, Bedford van with sliding door in good plus original condition. L. 200mm
\$400 – \$500
- 110 Fun Ho! 405, small articulated truck in good plus original condition. L. 270mm
\$200 – \$300
- 111 Fun Ho! 80, large racer with aluminium cast wheels. Paint loss to original orange finish. L. 190mm
\$75 – \$100
- 112 Fun Ho! 301, Streamline tourist bus. Excellent original finished in red. L. 190mm
\$200 – \$300
- 113 Fun Ho! 314, racing car № 9 finished in lilac, excellent original. L. 170mm
\$50 – \$75
- 114 Fun Ho! 306, Jaguar XK 120 in red with remnants of green over paint in good condition
\$75 – \$100
- 115 Fun Ho! 193, Humber Hawk 1950 saloon, bumper connection missing, 70% paint loss & replaced decals. Scarce toy. L. 150mm
\$200 – \$300
- 116 Fun Ho! 517, Flat deck truck in good original condition. Rare fixed deck version. L. 260mm
\$75 – \$100
- 117 Fun Ho! 91, motorbike and pillion in yellow with white wheels, excellent condition
\$50 – \$75
- 118 Fun Ho! 190, small London bus in good plus condition with metal wheels. L. 130mm
\$200 – \$300
- 119 Fun Ho! 181, railway bus in excellent condition. L. 230mm
\$200 – \$300
- 120 Fun Ho! 528, large tourist bus in excellent condition. L. 260mm
\$200 – \$300



- 121 Fun Ho! 415, Go kart with driver. Driver original. Reproduction kart and steering unit purchased new from Fun Ho! factory. L. 150mm
\$300 – \$400



- 122 Fun Ho! 154, roadster with driver and passengers, 90% paint loss, replaced rear wheels, a rare Fun Ho! toy. L. 150mm
\$500 – \$750



- 123 Fun Ho! 157, Kaiser car with original black rubber tyres, old repaint, rare toy
\$300 – \$400
- 124 Fun Ho! 191, Morris Oxford saloon car with remnants of original blue paint, crack repair to one window pillar. Rare variant with yellow wheels. L. 160mm
\$300 – \$400
- 125 Fun Ho! 515, Blue Ford single spinner with green streamline caravan. Crack repairs to three pillars on car. L. 310mm (2)
\$250 – \$300
- 126 Fun Ho! 302, two door saloon in good original condition with chewed wheels. Plus a Fun Ho! toy collectors badge in packet. L. 110mm (2)
\$75 – \$100
- 127 Fun Ho! 211, Racer. L. 100mm with a Fun Ho! tractor with yellow wheels. L. 75mm & small van. L. 75mm. Three good originals (3)
\$100 – \$150

- 128 Fun Ho! 206, Midget tractor. L. 50mm. №201 small super racer. L. 70mm. FH 202 small midget racer. L. 70mm. Three good originals (3)
\$50 – \$75
- 129 Fun Ho! 159 B, large farm truck in grey. L. 135mm & №403 half ton truck in green. L. 160mm. Both excellent originals
\$200 – \$300
- 130 Fun Ho! 522, Dump truck in green and red in good plus original condition. L. 170mm
\$75 – \$100
- 131 Fun Ho! 412, International pickup truck in good original condition. L. 140mm
\$75 – \$100
- 132 Fun Ho! 518, Fire engine with swivel ladder, good original with replaced correct wheels. L. 175mm. A McKenzie & Bannister fire truck. L. 150mm. Good original condition but missing ladder (2)
\$100 – \$150

133 No Lot

Die Cast Toys

- 134 6 Tootsie Toy, USA, 1950s vehicles, four sedans and two panel vans. One sedan mint, others play worn but good condition (6)
\$100 – \$150
- 135 Tootsie Toy Car carrier, die cast Prime Mover with pressed steel articulated trailer for four vehicles in red and yellow in excellent condition. L. 240mm (2)
\$100 – \$150



- 136 Tootsie Toy Lewis's van, rare 1930 green van with original white rubber tyres. Tyre crazed, some paint loss but a rare survivor. L. 75mm
\$300 – \$400
- 137 Tootsie Toy, 1920s sedans, one in original orange (excellent), one in maroon, possibly restored. L. 70mm (2)
\$100 – \$150
- 138 Tootsie Toy, 1930s Gyro plane in cream and blue, struts glued and replaced wheel. L. 120mm together with a Graham Paige sedan possibly repainted. L. 100mm (2)
\$100 – \$150
- 139 Three unusual die casts inc. a 1930s Lincoln Zephyr by 'Erie' Toys, USA. L. 85mm with an English 1930s saloon by Crescent Toys, England. L. 95mm and a 1930s Skyview

Desoto by Barclay Toys, USA (casting fault to one window). L. 80mm (3)
\$100 – \$150

- 140 Chad Valley Weekins die cast clockwork toys, a fire engine with ladder and a milk truck with two pails (missing six pails), both in good original condition. One original key for both toys which work. L. 110mm each (2)
\$150 – \$200
- 141 Dinky Toys, pre-WWII Chrysler airflow with part over paint and a two door saloon (2)
\$100 – \$150
- 142 Noddy and his Car, Corgi Toys. Play worn, no windscreen. L. 90mm. Noddy in his car by Morestone and Noddy in his train by Budgie Toys, England with some paint loss (3)
\$150 – 200
- 143 Five 1930s Dinky Toys inc. Austin in blue, convertible Austin in Khaki, an AA motorbike and side car, police motorbike & side car and a policeman on a motorbike. (5)
\$250 – \$300
- 144 Five small 1950s die cast vehicles including two DT racers, one Britains lead saloon, A Charbens Toys veteran bus and a Studebaker in lead. Good plus condition (5)
\$150 – \$200
- 145 Four 1950s Lincoln miniature die cast toys inc. blue bus, a green panel van, a white ambulance and a yellow pickup truck. (4)
\$75 – \$100
- 146 Dinky 196, Holden Special in Turquoise & white. Mint in card and cellophane box
\$150 – \$200

- 147 Dinky 164, Mark 4 Zodiac in bronze. Mint in plastic case
\$150 – \$200
- 148 Dinky 255, Ford Zodiac police car in white. Mint in near mint carded box
\$150 – \$200
- 149 Dinky 155, Ford Anglia in light turquoise. Mint in good plus box
\$75 – \$100
- 150 Dinky 197, Morris Mini Traveller in cream. Near mint in good box (missing flaps)
\$75 – \$100
- 151 Dinky 140, Morris 1100 in pale blue. Near mint in good plus carded box
\$50 – \$75
- 152 Dinky 139, Ford Consul in pale blue. Near mint in good plus carded box
\$50 – \$75
- 153 Dinky 164, Ford Zodiac in silver. Excellent in good plus plastic case
\$75 – \$100
- 154 Dinky 156, Rover 75 in maroon. Good plus in good box
\$50 – \$75

155



- 155 Dinky 196, Holden Special in bronze and cream. Near mint in good plus carded box with luggage in boot
\$75 – \$100
- 156 Dinky 141, Vauxhall Victor Estate Car in yellow. Near mint in excellent carded box
\$75 – \$100
- 157 Dinky 176, Austin A105 saloon in fawn colour with blue piping. Near mint in carded box.
\$50 – \$75
- 158 No Lot
- 159 No Lot

Bakelite and Catalin Radios

- 160 A pale blue plastic 1950s 'Airline' transistor radio by Montgomery Ward, USA in excellent condition (untested). 290 x 130mm
\$100 – \$150
- 161 A cream and red 1950s heavy plastic radio in the form of a large microphone, with moulded words 'News, sports, music', made in the USA. Good condition (untested). 350 x 200mm
\$200 – \$300
- 162 A superb 1930s brown and green mottled Bakelite radio by Gilfillan Bros, USA, with cream knobs and matching spring-loaded handle. Pristine condition, (untested). 250 x 150mm
\$200 – \$300

163



- 163 A brown Bakelite 1930s 'Kadette' Jewel radio made by International Radio Corp, Michigan, USA in excellent condition (untested). 190 x 100mm
\$300 – \$400
- 164 A cream 1940s plastic Bakelite radio by Westco, New Zealand in excellent Condition (untested). 230 x 300mm
\$200 – \$300

168



- 165 A green Bakelite 1950s radio by Motorola, USA in excellent condition. 300 x 140mm
\$150 – \$200

166



- 166 A Brown Bakelite 1950s radio by Motorola, USA in excellent condition (untested). 300 x 140mm
\$150 – \$200
- 167 A green and butterscotch 1930s Bakelite and Catalin radio by Stewart Warner, USA. Professionally restored and goes well. A classic vintage radio. 340 x 200mm
\$1000 – \$1500
- 168 A maroon and butterscotch 1930s, 'Streamline Bullet' styled radio by FADA, USA with sprung handle. Restored to mint condition. A rare and classic vintage radio. 240 x 160mm
\$1500 – \$2000
- 169 A grey blue plastic 1940s radio made in New Zealand, excellent condition. 200 x 180mm
\$150 – \$200

The Bob Geerligs Collection

To be offered at no reserve with the exception of lots 186, 305 & 356 marked with an asterisk*

Planes and Rockets

- 170 The Milky Way Boat MF 215, Chinese tinplate friction toy in original carded box (OCB). L. 230mm
\$30 – \$50
- 171 Space Ship, Japanese tinplate (ATC) in original carded box (OCB). L.175mm
\$40 – \$60
- 172 Clockwork Helicopter with Flexible Monorail MS 706, Chinese tinplate toy (OCB). L.340mm
\$125 – \$200
- 173 Box lot of 19 carded planes – approx. L. 90 to 110mm each
\$30 – \$50
- 174 6 assorted USAF friction jets, Japanese tinplate (OCB)
\$25 – \$40
- 175 Universe Rocket Express MF 030, Chinese tinplate toy (OCB). L. 240mm
\$50 – \$100
- 176 4 Chinese tinplates planes inc. Ambulance Helicopter, Friction Airplane MF 107, Training Plane, Friction Fighter MF 951 – all (OCB) (4 items)
\$50 – \$100

Catalogue Note: the majority of the lots in the Bob Geerligs Collection are presented in their original packaging. The abbreviation (OCB) refers to the fact that these lots are contained within their original carded boxes.

- 177 3 Chinese tinplate planes inc. Avion de Ligne, Super Sonic Jet plane, Ambulance Helicopter – all (OCB) (3 items)
\$40 – \$80
- 178 3 Japanese tinplate planes inc. Emergency Helicopter (TT) , TWA Boeing 727 Jet Airplane, Boeing 747 Jumbo Jet (TT) – all (OCB) (3 items)
\$100 – \$150
- 179 British Airways Concorde, Japanese Tinplate toy (Daiya), (OCB). L. 310mm
\$80 – \$120
- 180 Jetliner with Siren MF 153, Chinese Tinplate toy, (OCB). L.330mm
\$50 – \$80
- 181 3 Chinese tinplate planes inc. Avion Aircraft, Passenger Rocket MF 093, Universe Rocket Express MF 030 – all (OCB) (3 items)
\$100 – \$150
- 182 Clockwork spinning air control tower, German tinplate toy (Schopper), (OCB). H. 180mm
\$75 – \$125



- 183 4 Chinese and Japanese tinplate planes inc. Boeing 747 Jumbo Jet (TT), Emergency Helicopter (TT), Avion Aircraft, Passenger Rocket MF 093 – all (OCB) (4 items)
\$150 – \$200
- 184 Box lot of 10 small tinplate planes
\$50 – \$80
- 185 German Die cast Junkers Ju – 52 1:250 scale (Schabak) in original carded box (OCB)
\$50 – \$80
- 186*Dan Dare Spaceship Builder №2 by A&M Bartram (Britain) in original condition with all parts affixed with instructions. Very rare metal kitset
\$400 – \$800

Trains

- 187 Box lot of mostly Hornby O Gauge track, accessories inc. water tower, carriages (2), rolling stock (5), small locomotive. In excess of 25 items
\$100 – \$200
- 188 Real Rail Level Crossing, O Gauge in original worn box
\$30 – \$50
- 189 Box lot of Mettoy O Gauge track and accessories. Approx. 20 items
\$80 – \$120



- 190 Large Box lot of Hornby O Gauge track, switching gear. Locomotive and rolling stock. Approx. 30+ items
\$150 – \$200
- 191 Mettoy O Gauge Combination Passenger Train Set in original carded box. Set consists of clockwork locomotive, 3 rolling stock, track, station, tunnel, crossing and signal, near complete. Box dms 480 x 550mm
\$100 – \$200
- 192 Mettoy O Gauge Freight Train Set № 5561/2. Set consists of clockwork locomotive, track and accessories in original carded box. Excellent and complete set. Box dms 340 x 510mm
\$100 – \$200

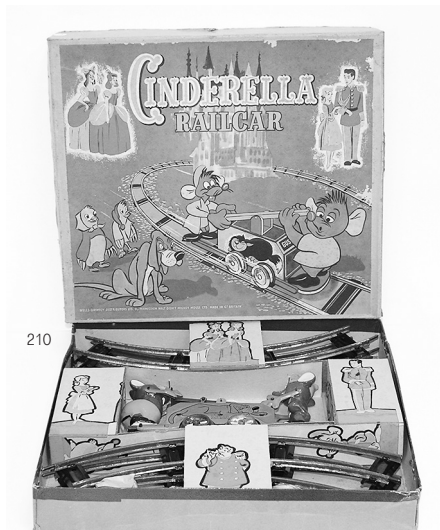


- 193 Mettoy O Gauge Combination Passenger Train Set № 5563/1 in original carded box. Set consists of clockwork locomotive, 6 rolling stock, track, station, tunnel, crossing and signal, near complete. Box dms 480 x 550mm
\$100 – \$200
- 194 Mettoy O Gauge 'Safetylectric' Express Train Set № 5022 in original carded box. Set consists of loco, 3 carriages, track and figure of 8 crossing. Excellent and complete set. Box dms 490 x 565mm
\$150 – \$300

- 195 Lincoln Toys Super-Size Sparking Train Engine № 2504. Rare NZ made tinplate friction toy in original carded box. L. 490mm
\$100 – \$200
- 196 Dream Super Express Bullet Train, Japanese tinplate toy (Daiya). L. 540mm
\$40 – \$80
- 197 Shuttling Freight Train, Japanese tinplate (Cragstan) battery powered toy (OCB). Complete with Loco, track and accessories inc. logs. Superb and rare example
\$200 – \$300

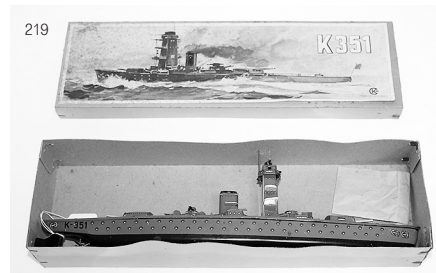


- 198 International Express Locomotive MF 804, Chinese tinplate (OCB). L. 400mm
\$75 – \$125
- 199 Mettoy OO Gauge Passenger Train Set № 5702 (OCB) missing loco but with track and rolling stock
\$50 – \$80
- 200 Mettoy O Gauge Passenger Train Set № 5362. Set consists of clockwork locomotive, carriages and tender (4) track in original carded box. Box dms 310 x 380mm
\$80 – \$150
- 201 Lehmann Rigi 900 Alpine Cable Car, German tinplate toy (OCB). Duo version with two cable cars and mechanism
\$100 – \$200
- 202 Dream Super Express bullet train, battery powered Japanese tinplate (Modern Toys) in original carded box
\$75 – \$125
- 203 Alpine Cable Car, British pressed steel toy (Guiterman) in original carded box
\$50 – \$75
- 204 2 San Francisco Cable Cars, one boxed
\$30 – \$50
- 205 2 wind up small tinplate train sets, both boxed
\$30 – \$50
- 206 3 small Chinese tinplate train sets inc. Happy Train & 2 friction powered locomotives all (OCB)
\$50 – \$100
- 207 Mechanical Train Set № 3050, Japanese tinplate (Alps) in original carded box, loco and track
\$50 – \$75
- 208 Lincoln Toys Diesel Train № 2458, NZ made tinplate friction toy (OCB). L. 350mm
\$70 – \$100
- 209 Super Express SE – 1 bullet train, Japanese battery operated tinplate with track (OCB)
\$50 – \$100
- 210 Cinderella Railcar, British tinplate and resin toy (OCB). Superb and rare example
\$150 – \$300



Boats

- 211 2 play worn wooden boats, semi-complete
\$30 – \$60
- 212 3 loose toys: Schuco tinplate submarine, Schuco plastic speedboat & tinplate passenger liner
\$70 – \$100
- 213 Box lot of 20 Japanese tinplate Pop Pop Boats in original packaging
\$70 – \$100
- 214 Arnold German pressed steel racing boat № 2040, (OCB). L.240mm
\$200 – \$400
- 215 4 Chinese tinplate boats inc. Patrol Boat MS 878, Friction Submarine MF 964, Runner Boat & clockwork jet propelled boat all (OCB)
\$75 – \$125
- 216 2 Lines Bros 10 inch Yachts, NZ made press steel toys, one green, the other pale blue (OCB)
\$80 – \$150
- 217 Tri-Ang Minic Jack in the Boat Novelty boat, NZ made plastic clockwork toy in fair original box
\$50 – \$80
- 218 Mettoy Electric Motor Cruiser, British pressed steel toy (OCB). L. 350mm
\$50 – \$100
- 219 Kellerman CKO battle frigate K 351, superb German tinplate clockwork toy (OCB). L.320mm
\$150 – \$250



- 220 3 Kellerman CKO & Arnold motorboats, model nos. CKO 377, CKO 374 & Arnold 167, German pressed steel clockwork toys all (OCB)
\$120 – \$200



- 221 4 Kellerman CKO & Arnold motorboats, model nos. CKO 377 x 2, Arnold 167 & CKO? 703, German pressed steel clockwork toys all (OCB)
\$200 – \$300
- 222 MS Pacific Pneumatic Remote Control Passenger Cruiser, German pressed steel toy (OCB). L. 430mm
\$150 – \$250
- 223 Schopper vehicle ferry, German tinplate toy with original pack of cars (OCB)
\$30 – \$50
- 224 Wheel Driving Boat, Chinese clockwork toy (OCB)
\$30 – \$40
- 225 2 Lincoln Toys ferries, blue and red, NZ pressed steel toys (OCB)
\$50 – \$100
- 226 New Evince model electric outboard motor
\$30 – \$50

Cars and Vehicles

- 227 2 Chinese tinplate sedans inc. Friction Sedan MF 294 & clockwork propaganda sedan (OCB)
\$50 – \$100
- 228 2 Chinese tinplate tanks inc. Stars-Landing Tank MF 710 & Tank Friction Type MF 074 (OCB)
\$50 – \$100
- 229 Box lot of tinplate sedans and miniature cars, approx. 20 items
\$30 – \$50
- 230 Tinplate earthmover tractor and trailer in yellow and red, possibly NZ Lincoln Toys
\$30 – \$50

- 231 2 Chinese tinplate friction race cars inc. Mercedes-Benz C111 & Rally Car (OCB) \$50 – \$100
- 232 3 Die cast Deluxe Racers in original blister packs \$40 – \$80
- 233 Ertl American Classics presentation pack of 6 (missing one) inc. Ford Mustang, 63 Corvette, 57 Chevy etc. \$30 – \$50
- 234 2 Chinese tinplate friction cars inc. Rambler Sedan & Baby Convertible (OCB) \$40 – \$70
- 235 Racing Car, Chinese tinplate friction toy MF 211 with extensive decals (OCB). L.290mm \$50 – \$100
- 236 Miniature Open Car Jeep, Chinese tinplate friction toy MF 978 (OCB) \$30 – \$50
- 237 4 mixed toys inc. 2 x tinplate F.D. Ladder Truck, Torpeauto & 1923 Renault, 4 items (OCB) \$50 – \$100
- 238 3 mixed toys inc. Motoring board game, Playland Scooter & F.D. Ladder Truck (OCB) \$30 – \$50
- 239 5 kitset vintage Coupes by Gabriel (metal) inc. Model A, Victoria, Model A Roadster & Chev Coupe, also Lindberg 34 Plymouth plastic kitset, all (OCB) \$100 – \$150
- 240 3 Chinese tinplate friction cars inc. Oil Tanker, sedan in brilliant red MF 998, Racer MS 885 all (OCB) \$70 – \$100



- 241 Large Sedan, Battery operated Chinese tinplate toy in brilliant red with white hardtop, superb example, (OCB). L.230mm \$100 – \$200
- 242 Firetruck with siren MF 718, Chinese tinplate friction toy, (OCB). L.265mm \$70 – \$100
- 243 Photoing On Car ME 630, Chinese battery operated tinplate toy with two detailed figures, extremely rare black variant, superb example in original condition in carded box. L.310mm \$250 – \$400
- 244 Fire Chief Car, Japanese (ASC) friction tinplate toy in red with operational siren, (OCB) \$75 – \$125



- 245 Jet Propelled Car by Globe, unusual pressed steel toy with original plunger and packaging \$40 – \$80
- 246 Double Decker Bus MF 185, large Chinese tinplate friction toy in blue, (OCB). L.270mm \$50 – \$100
- 247 Boat on Trailer with Stationwagon, Japanese (Daiya) friction tinplate toy in three parts, (OCB) \$75 – \$125
- 248 Car Transport with four cars MF 868, large Chinese tinplate toy in fine original condition, (OCB).L. 450mm \$250 – \$500
- 249 Clockwork Fire Engine, NZ (Lincoln Toys) tinplate toy, (OCB). L. 240mm \$50 – \$80
- 250 VW Kombi in two tone green, NZ (Lincoln Toys) tinplate toy, (OCB), L.230mm \$50 – \$80
- 251 4 Chinese and Japanese tinplate buses inc. School Bus, Double Decker Bus MF 844, School Bus MF 887, Ambulance MF 242, all (OCB) \$100 – \$200
- 252 3 Chinese and Japanese tinplate and plastic racing cars inc. Mercedes Benz (Maks), Racer MF 800, Indianapolis Ferrari (ASC), all (OCB) \$75 – \$125
- 253 Tinplate Forklift (SSS Quality Toys) and Travel Luggage Set MF 994, (OCB) \$50 – \$75

- 254 5 Chinese tinplate vehicles inc. East Wind friction car MF 032, Fire Truck MF 718, Bus MF 241, Fire Chief Car MF 144, Fire Truck MF 718, all (OCB) \$125 – \$175
- 255 Chinese clockwork tinplate VW Karmann Ghia MS 711 in pale blue with automatic door, (OCB). L. 245mm \$100 – \$150
- 256 Chinese tinplate friction VW Karmann Ghia MF 743 in metallic blue, (OCB). L. 245mm \$100 – \$150



- 257 Japanese tinplate (Daiya) battery-operated Porsche 914 in metallic blue in superb original condition with intact plastic roof, (OCB). L. 220mm \$250 – \$350
- 258 NZ (Lincoln Toys) tinplate bus terminal, (OCB). L. 375mm \$50 – \$100
- 259 2 German (Gama) tinplate friction toys inc. 2364 Metal Dump Truck & 2366 Metal Tip Truck, packaged in NZ Lincoln Toys carded boxes \$100 – \$200
- 260 Japanese (Cragstan) tinplate remote control Buick with control unit in red and yellow, some corrosion, (OCB). L. 300mm \$150 – \$250
- 261 German (Gama) tinplate friction F.D. Grab Crane Truck 2427 packaged in NZ Lincoln Toys carded box. L. 330mm \$100 – \$200
- 262 Japanese (Modern Toys) tinplate battery-operated sightseeing bus, (OCB). L.340mm \$75 – \$125
- 263 NZ (Lincoln Toys) tinplate friction Plymouth Roadster 2433 in excellent original condition, (OCB). L.250mm \$100 – \$200



- 264 2 NZ (Lincoln Toys) tinplate friction cars inc 2433 Plymouth Roadster & 2413 Fire Chief Car, (OCB). L. 250mm \$150 – \$250
- 265 NZ (Lincoln Toys) tinplate Taunus Car 2406 in brilliant red, in superb original condition, (OCB). L. 185mm \$100 – \$200
- 266 NZ (Lincoln Toys) tinplate friction Super-Size Silver Arrow Mercedes Racer 2502, some corrosion, (OCB). L. 400mm \$200 – \$400



- 266 Box lot of approx. 11 tinplate Fire, Police and emergency vehicles
\$150 – \$250
- 268 Box lot of 6 tinplate buses
\$70 – \$100
- 269 Box lot of approx. 22 tinplate racing cars, various sizes and brands
\$200 – \$400
- 270 Box lot of approx. 12 tinplate sedans, roadsters and vintage jalopy
\$70 – \$125
- 271 Box lot of approx. 11 tinplate jeeps, utilities, fire and haulage trucks
\$70 – \$125



- 272 5 large NZ and German tinplate vehicles inc. Gama Cadillac, Lincoln Toys Super-Size Commander, Fire Chief car and tip truck
\$250 – \$400

Further Planes and Helicopters

- 273 Box lot of approx. 65 small tinplate planes
\$150 – \$250
- 274 Box lot of approx. 11 tinplate helicopters
\$100 – \$150
- 275 Box lot of 4 medium to large propeller planes
\$100 – \$150

Motorcycles

- 276 BMW 500 motorbike in heavy black tinplate, maker unknown. L.295mm
\$50 – \$100
- 277 Fun Ho! 91, Motorbike and pillion in green
\$75 – \$150
- 278 Chinese tinplate motorcycle and sidecar MS 709, (OCB)
\$40 – \$70
- 279 Box lot of 8 smaller tinplate motorcycles
\$50 – \$80

- 280 Mettoy (UK) tinplate clockwork motorcycle rider in red-striped blazer and goggles, with pressed steel wheels, extremely rare
\$150 – \$250

- 281 Chinese clockwork motorcycle and rider MS 702, (OCB)
\$30 – \$50

- 282 3 tinplate motorcycles inc. MS 702, MS 709 & German, possibly Huki brand
\$100 – \$200

- 283 2 tinplate motorcycles inc. German, possibly Huki and Hungarian Lemezar Gyar in blue, (OCB)
\$100 – \$200

- 284 3 tinplate motorcycles inc. German, possibly Huki, friction action rider & Japanese (ATC) monkey on motorbike with leaping action
\$100 – \$200



- 285 Fun Ho! 152 Motorbike & Sidecar with passenger, later repainting in pink
\$100 – \$150
- 286 Fun Ho! 161 Fire Engine with fixed ladders
\$100 – \$200
- 287 Japanese tinplate Vespa scooter in metallic green, (OCB) with another scooter in cream
\$75 – \$150
- 288 British tinplate horse and cart, Lehmann 910 Seal & wooden racer
\$100 – \$200

Die Cast

- 289 3 Tri-Ang Minic (NZ Lines Bros) clockwork vehicles inc. 2 x delivery lorries in green/red & pale blue/red and cabriolet in two tone blue, (OCB)
\$100 – \$200
- 290 3 Tri-Ang Minic (NZ Lines Bros) clockwork vehicles inc. 2 x delivery lorries in green/blue & pale blue/red and cabriolet in two tone blue, (OCB)
\$100 – \$200
- 291 3 Tri-Ang Minic (NZ Lines Bros) clockwork vehicles inc. Petrol Lorry in red/yellow, Farm Tractor and Trailer in pale blue/red & Truck and boat on trailer, (OCB)
\$150 – \$250



- 292 5 Tri-Ang Minic (NZ Lines Bros) clockwork vehicles inc. 2 x Evening news van in yellow, Tractor in red, Saloon in blue & Truck and boat on trailer, (OCB)
\$150 – \$250
- 293 Box lot of Dinky militaries, Dinky vans & farm vehicles, 1950s & 60s, approx. 20 items
\$250 – \$350
- 294 Dinky 617 Volkswagen KDF Gun set without gun but in complete and original carded picture box
\$75 – \$125
- 295 Dinky 883 Char AMX Poseur de Pont in good plus condition, (OCB)
\$100 – \$200
- 296 Dinky 825 DUKW in near mint condition but without driver or cargo, (OCB)
\$100 – \$200



- 297 Dinky 120 Jaguar E Type in red, Dinky 114 Triumph Spitfire in Royal Blue, both good plus condition, (OCB) together with 4 empty original Dinky boxes in good plus to excellent condition – 231 Triumph Herald, 558 Citroen 2CV, 113 MGB & 518 Renault 4L (6 items)
\$175 – \$250
- 298 Dinky 521 Bedford Articulated Lorry in red in good condition, (OCB) & Lone Star Rolls Royce in near mint condition, (OCB)
\$100 – \$150
- 299 11 die cast vehicles in blister packs inc. Touch Wheels King, M 60 & Centurion Tanks, Hot Wheels Auburn 852 & '31 Doozie, Corgi Blimp and Ertl Cars of the World various
\$80 – \$120
- 300 Box lot of 12 Matchbox Models of Yesteryear inc. Y-5 1927 Talbot Van, Y-1 1936 Jaguar SS-100, Y-17 1938 Hispano Suiza, Y-16 Mercedes SS Coupe etc. in original carded window front boxes
\$75 – \$100

305



- 301 Box lot of 8 loose Matchbox Models of Yesteryear plus approx. 12 empty boxes \$50 – \$80
- 302 Bag lot of 3 boxed Matchbox cars, loose cars and various empty boxes, approx. \$50 – \$80
- 303 Bag lot of 5 Solido Age D'or die cast vehicles inc. Cord, Delahaye x 2 & two others (5 items) \$40 – \$70
- 304 Box lot of miscellaneous die cast toys and packaging \$40 – \$70
- 305* 7 interesting & extremely rare NZ vehicles inc. Large Storkline (Bruce Watt) pressed steel fire truck in red, Tink-E -Toy lead open wheel racer & lead streamline racer, Fun Ho! 170 Packard Roadster, Jumbo Toys Tractor 407 & 2 deliveries brand unknown \$400 – \$800

- 306 No Lot
- 307 No Lot

Toy Catalogues

- 308 Matchbox 1960s/70s, Corgi 78, Solido 71 and others, approx. 22 in total \$40 – \$80
- 309 Dinky and Corgi 60s & 70s, 6 in total \$40 – \$80
- 310 Large illustrated Triang Toys/Lines Bros. № 61 1951-2, Lines Bros. (NZ) Price List 1957 & Overseas Marketing Services Ltd (Auckland) 1954 Stock list \$50 – \$100
- 311 Assorted Faller, Meccano, Wilesco, Rivarossi, Marklin, Hornby from 1950s to 70s. 15 in total \$50 – \$100
- 312 British Toys Magazine, 1950s. 41 editions \$50 – \$100

Tri-Ang and Tonka

- 313 Tri-ang NZ, large Breakdown Service Truck in red with yellow crane. L. 400mm \$60 – \$100

- 314 Tonka NZ №06 Dump Truck in orange/cream (corroded), (OCB) \$30 – \$50
- 315 Tonka NZ Logging Truck in yellow. L. 600mm \$50 – \$80
- 316 Two Tonka NZ Jeeps in brown, (corroded) \$30 – \$50
- 317 Tonka NZ Serv-I-Car in white & threshing mower \$40 – \$70
- 318 Box lot of Trains and signals inc. approx. 45 possibly Mettoy №8 signals, Hornby O Gauge LMS 0-4-0 clockwork loco 5600, British Marx 'Main Street' O Gauge 0-4-0 tinplate loco 3978 in black & 2 Mar Lines (British) tinplate carriages \$150 – \$250

Steam Engines

- 319 Wilesco (German) Steam Engine D45 with accessory pack, (OCB). H. 320mm \$60 – \$100



- 320 Mamod Steam Roadster in cream, near mint condition with all accessories, (OCB). L. 420mm \$150 – \$200
- 321 Wilesco Traction Engine in near mint original condition, (OCB). L. 310mm \$100 – \$200
- 322 Large Box lot of Wilesco engineering machines and accessories inc. M 64 Plate Shears, M 53 Circular Saw, M52 Two Wheel Grinder, M 59

Eccentric Press, M 62 Drop Hammer, M55 Transmission, M51 Drilling Machine, M66 Dynamo etc., over 14 items in mint condition in original carded boxes \$200 – \$400

- 323 Wilesco Static Steam Engine with dynamo D 24, 400 x 340mm \$150 – \$300
- 324 Wilesco Steam Engine with workshop D 141 with 66 Dynamo, (OCB). L. 450mm \$150 – \$300
- 325 Wilesco Old Smoky Steamroller with accessory pack. L. 340mm \$75 – \$125
- 326 Box lot of Wilesco engineering machines and accessories inc. M 61 Stamping Press, M 55 Transmission, fuel bricks, funnels and misc. parts \$50 – \$100
- 327 2 Vintage Fleischmann steam engines in playworn but original condition \$75 – \$150



- 328 Brimo (NZ) Mark II Oscillating Steam Engine in original packaging with instruction sheet, rare and important NZ toy \$150 – \$250
- 329 Wilesco M56 Model Plate and M68 Windmill, (OCB) \$75 – \$125

Novelty Figures, Games & Puzzles

- 330 Edwardian Mohair Brown bear pull toy. L. 220mm \$250 – \$400
- 331 Escalado Horse Racing Game by Chad Valley (England), (OCB) \$50 – \$80
- 332 Animal Craft Stegosaurus wood kitset & Magnetic Jack Straws game, (OCB) \$30 – \$50
- 333 Baby Piano & Penelope's Piano Book, (OCB) \$40 – \$60
- 334 3 Chinese tinplate figures inc. Drumming Animal, Clockwork Panda Drummer & Ringing Tricycle, (OCB) \$50 – \$80

- 335 Box lot of 10 hopping and clockwork tinplate animals inc. Jumping Rabbit, Swimming Duck, 2 x Bird in Shell, Sniffing dog, Hornbill, Hen, Easter Egg, etc., all (OCB)
\$75 – \$125



- 336 5 rare tinplate toys inc. 2 x Kohler GNK (West German/US War Zone) Circus Monkey with parasol, USSR goose, Fips hopping mouse & Minic (NZ) Pecking bird, all (OCB)
\$200 – \$300
- 337 Box lot of 12 Chinese tinplate animals & figures inc. Monkey Riding Horse, clockwork Ice Cream vendor, Jumping Rabbit, Treasure Box, Cloth Drum, Panda Drummer etc., all (OCB)
\$80 – \$140
- 338 Rare Russian tinplate ski field cable car toy, (OCB), L.370mm
\$100 – \$200
- 339 Rare Russian clockwork tinplate clown with jaunty cart and spotted pony, (OCB)
\$80 – \$120
- 340 2 x Large Cragstan (Japanese) clockwork tinplate Lady Bug with Mystery Action, (OCB), L. 140mm
\$70 – \$100
- 341 2 tinplate toys inc. Riding Goose, Crawling Baby, all (OCB)
\$40 – \$80
- 342 2 plastic and celluloid toys inc. Single bar exercise gymnast, Weepy the Wee Wee, (OCB)
\$50 – \$100



- 343 3 x Willie Walker, Lincoln Toys (possibly NZ), clockwork tinplate toys, all in original carded boxes
\$250 – \$350
- 344 2 x Monkey Tricks, Lincoln Toys (possibly NZ), tinplate climbing toy in partial carded box
\$60 – \$100
- 345 Chinese tinplate Fire Chief Car ME 699, (OCB), L. 230mm
\$80 – \$120

- 346 3 x Crescent Toys (England) lead figures inc. Farmer and sheep set (13 figures), Hospital set (6 figures) & Cowboys & Indians (11 figures) all in superb condition in original carded boxes
\$250 – \$350



- 347 Parro Toys (NZ) Speedway Riders lead figure set 6 figures (OCB)
\$125 – \$200
- 348 2 x Arnold (German) Das goldene Handwerk tinplate figures, (OCB)
\$80 – \$150
- 349 Tipp Kick German table top soccer game, (OCB)
\$50 – \$100
- 350 Lincoln Toys (NZ) Flying Plane and Tower, (OCB fair)
\$60 – \$100
- 351 Smoky Bear, Marusan Toys (Japanese) battery-operated toy, (OCB)
\$75 – \$150
- 352 Bubble Blowing Monkey, Rock Valley (Japanese) battery-operated toy, (OCB)
\$60 – \$100
- 353 Chinese tinplate clockwork action toys inc. MS 866 Communications and Transport & Mystery Action Rat Trap, (OCB)
\$75 – \$125
- 354 Mobaco (Dutch) 2 housing construction set in wood and heavy card, (OCB)
\$80 – \$120
- 355 Mettoy Dolls House and Self-Opening Garage, incomplete with instructions, (OCB)
\$150 – \$250



- 356* 'Bully' Blomer & Schüler (German) early battery operated tinplate terrier in superb original condition, extremely rare, (OCB), L. 180mm
\$300 – \$400

Box Lots and Loose Toys

- 357 Box lot of approx. 15 loose smaller tinplate vehicles inc. vans, buses, freight trucks & racers
\$75 – \$150
- 358 Box lot of 10 loose and boxed tinplate and plastic vehicles, vans inc. 3 tablet style clockwork trainsets
\$100 – \$200
- 359 Box lot of 4 1/18 & 1/21 scale die cast vintage vehicles inc. Gama 1928 Mercedes SSK, Mira (Spanish) '53 Chev pickup, Burago (Italian) Mercedes SSK, Polistil BMW 328
\$60 – \$100
- 360 Bag lot of 6 vintage tinplate and cast toys inc. early English tinplate Fire Engine, Sanshin (Japanese) remote control MGA in red, early clockwork field gun, Tri-Ang Minic Steamroller, Tri-Ang Minic racer in green & cast metal horsedrawn firewagon
\$100 – \$200
- 361 Box lot of approx. 25 tinplate circus toys, animals & novelties inc. elephant on trike, ladybug etc.
\$100 – \$200
- 362 Box Lot of 10 tinplate animals inc. turtles, monkey, zebras, goose, woodpecker with tree etc.
\$100 – \$200
- 363 Box lot of 5 (OCB) tinplate toys inc. Robot-7, Boy on Tricycle, Monkey on Horseback, Ice Cream Vender & Ringing Tricycle together with 8 misc. empty toy boxes
\$75 – \$125
- 364 Box lot of 13 tinplate balancing and clockwork acrobatic toys inc. spaceship merry-go-round, baby robot on swing, planes, Zeppelin, clowns etc.
\$150 – \$300
- 365 Trumpet Playing Bear, Cragstan ALPS Toys (Japanese) battery-operated toy with original damaged box together with smaller shoeshine bear
\$75 – \$150
- 366 Wooden Elephant with felt ears. L. 200mm
\$30 – \$60

Conditions of sale

Please note: it is assumed that all bidders at auction have read and agreed to the conditions described on this page.
ART+OBJECT directors are available during the auction viewing to clarify any questions you may have.

1.

Registration: Only registered bidders may bid at auction. You are required to complete a bidding card or absentee bidding form prior to the auction giving your correct name, address and telephone contact + supplementary information such as email addresses that you may wish to supply to ART+OBJECT

2.

Bidding: The highest bidder will be the purchaser subject to the auctioneer accepting the winning bid and any vendor's reserve having been reached. The auctioneer has the right to refuse any bid. If this takes place or in the event of a dispute the auctioneer may call for bids at the previous lowest bid and proceed from this point. Bids advance at sums decreed by the auctioneer unless signaled otherwise by the auctioneer. No bids may be retracted. The auctioneer retains the right to bid on behalf of the vendor up to the reserve figure.

3.

Reserve: Lots are offered and sold subject to the vendor's reserve price being met.

4.

Lots offered and sold as described and viewed: ART+OBJECT makes all attempts to accurately describe and catalogue lots offered for sale. Notwithstanding this neither the vendor nor ART+OBJECT accepts any liability for errors of description or faults and imperfections whether described in writing or verbally. This applies to questions of authenticity and quality of the item. Buyers are deemed to have inspected the item thoroughly and proceed on their own judgment. The act of bidding is agreed by the buyer to be an indication that they are satisfied on all counts regarding condition and authenticity.

5.

Buyers premium: The purchaser by bidding acknowledges their acceptance of a buyers premium of 18% + GST on the premium to be added to the hammer price in the event of a successful sale at auction.

6.

ART+OBJECT is an agent for a vendor: A+O has the right to conduct the sale of an item on behalf of a vendor. This may include withdrawing an item from sale for any reason.

7.

Payment: Successful bidders are required to make full payment immediately post sale – being either the day of the sale or the following day. If for any reason payment is delayed then a 20% deposit is required immediately and the balance to 100% required within 3 working days of the sale date. Payment can be made by Eftpos, bank cheque or cash. Cheques must be cleared before items are available for collection. Credit cards are not accepted.

8.

Failure to make payment: If a purchaser fails to make payment as outlined in point 7 above ART+OBJECT may without any advice to the purchaser exercise its right to: a) rescind or stop the sale, b) re offer the lot for sale to an underbidder or at auction. ART+OBJECT reserves the right to pursue the purchaser for any difference in sale proceeds if this course of action is chosen, c) to pursue legal remedy for breach of contract.

9.

Collection of goods: Purchased items are to be removed from ART+OBJECT premises immediately after payment or clearance of cheques. Absentee bidders must make provision for the uplifting of purchased items (see instructions on the facing page)

10.

Bidders obligations: The act of bidding means all bidders acknowledge that they are personally responsible for payment if they are the successful bidder. This includes all registered absentee or telephone bidders. Bidders acting as an agent for a third party must obtain written authority from ART+OBJECT and provide written instructions from any represented party and their express commitment to pay all funds relating to a successful bid by their nominated agent.

11.

Bids under reserve & highest subject bids: When the highest bid is below the vendor's reserve this work may be announced by the auctioneer as sold 'subject to vendor's authority' or some similar phrase. The effect of this announcement is to signify that the highest bidder will be the purchaser at the bid price if the vendor accepts this price. If this highest bid is accepted then the purchaser has entered a contract to purchase the item at the bid price plus any relevant buyers premium.

Important advice for buyers

The following information does not form part of the conditions of sale, however buyers, particularly first time bidders are recommended to read these notes.

A.

Bidding at auction: Please ensure your instructions to the auctioneer are clear and easily understood. It is well to understand that during a busy sale with multiple bidders the auctioneer may not be able to see all bids at all times. It is recommended that you raise your bidding number clearly and without hesitation. If your bid is made in error or you have misunderstood the bidding level please advise the auctioneer immediately of your error – prior to the hammer falling. Please note that if you have made a bid and the hammer has fallen and you are the highest bidder you have entered a binding contract to purchase an item at the bid price. New bidders in particular are advised to make themselves known to the sale auctioneer who will assist you with any questions about the conduct of the auction.

B.

Absentee bidding: ART+OBJECT welcomes absentee bids once the necessary authority has been completed and lodged with ART+OBJECT. A+O will do all it can to ensure bids are lodged on your behalf but accepts no liability for failure to carry out these bids. See the Absentee bidding form in this catalogue for information on lodging absentee bids. These are accepted up to 2 hours prior to the published auction commencement.

C.

Telephone bids: The same conditions apply to telephone bids. It is highly preferable to bid over a landline as the vagaries of cellphone connections may result in disappointment. You will be telephoned prior to your indicated lot arising in the catalogue order. If the phone is engaged or connection impossible the sale will proceed without your bidding. At times during an auction the bidding can be frenetic so you need to be sure you give clear instructions to the person executing your bids. The auctioneer will endeavour to cater to the requirements of phone bidders but cannot wait for a phone bid so your prompt participation is requested.

D.

New Zealand dollars: All estimates in this catalogue are in New Zealand dollars. The amount to be paid by successful bidders on the payment date is the New Zealand dollar amount stated on the purchaser invoice. Exchange rate variations are at the risk of the purchaser.

Absentee bid form

Auction No. 88

Rare Toys

Wednesday 10 December 2014 at 1.00pm

This completed and signed form authorizes ART+OBJECT to bid on my behalf at the above mentioned auction for the following lots up to prices indicated below. These bids are to be executed at the lowest price levels possible.

I understand that if successful I will purchase the lot or lots at or below the prices listed on this form and the listed buyers premium for this sale (18%) and GST on the buyers premium. I warrant also that I have read and understood and agree to comply with the conditions of sale as printed in the catalogue.

Lot no.	Description	Auction Date	Bid maximum (New Zealand dollars)
_____	_____	_____	_____
_____	_____	_____	_____
_____	_____	_____	_____
_____	_____	_____	_____
_____	_____	_____	_____
_____	_____	_____	_____
_____	_____	_____	_____
_____	_____	_____	_____
_____	_____	_____	_____
_____	_____	_____	_____
_____	_____	_____	_____

Payment and Delivery ART+OBJECT will advise me as soon as is practical that I am the successful bidder of the lot or lots described above.

I agree to pay immediately on receipt of this advice. Payment will be by cash, cheque or bank transfer. I understand that cheques will need to be cleared before goods can be uplifted or dispatched. I will arrange for collection or dispatch of my purchases. If ART+OBJECT is instructed by me to arrange for packing and dispatch of goods I agree to pay any costs incurred by ART+OBJECT. Note: ART+OBJECT requests that these arrangements are made prior to the auction date to ensure prompt delivery processing.

Please indicate as appropriate by ticking the box:

☐ PHONE BID

☐ ABSENTEE BID

MR/MRS/MS: _____

SURNAME: _____

POSTAL ADDRESS: _____

STREET ADDRESS: _____

BUSINESS PHONE: _____

MOBILE: _____

FAX: _____

EMAIL: _____

Signed as agreed: _____

To register for Absentee bidding **this form must be lodged with ART+OBJECT by 11 am** on the day of the published sale time in one of three ways:

1. Fax this completed form to ART+OBJECT +64 9 354 4645
2. Email a printed, signed and scanned form to: info@artandobject.co.nz
3. Post to ART+OBJECT, PO Box 68 – 345 Newton, Auckland 1145, New Zealand

ART+OBJECT 3 Abbey Street, Newton, Auckland, New Zealand. Telephone +64 9 354 4646, Freephone 0800 80 60 01