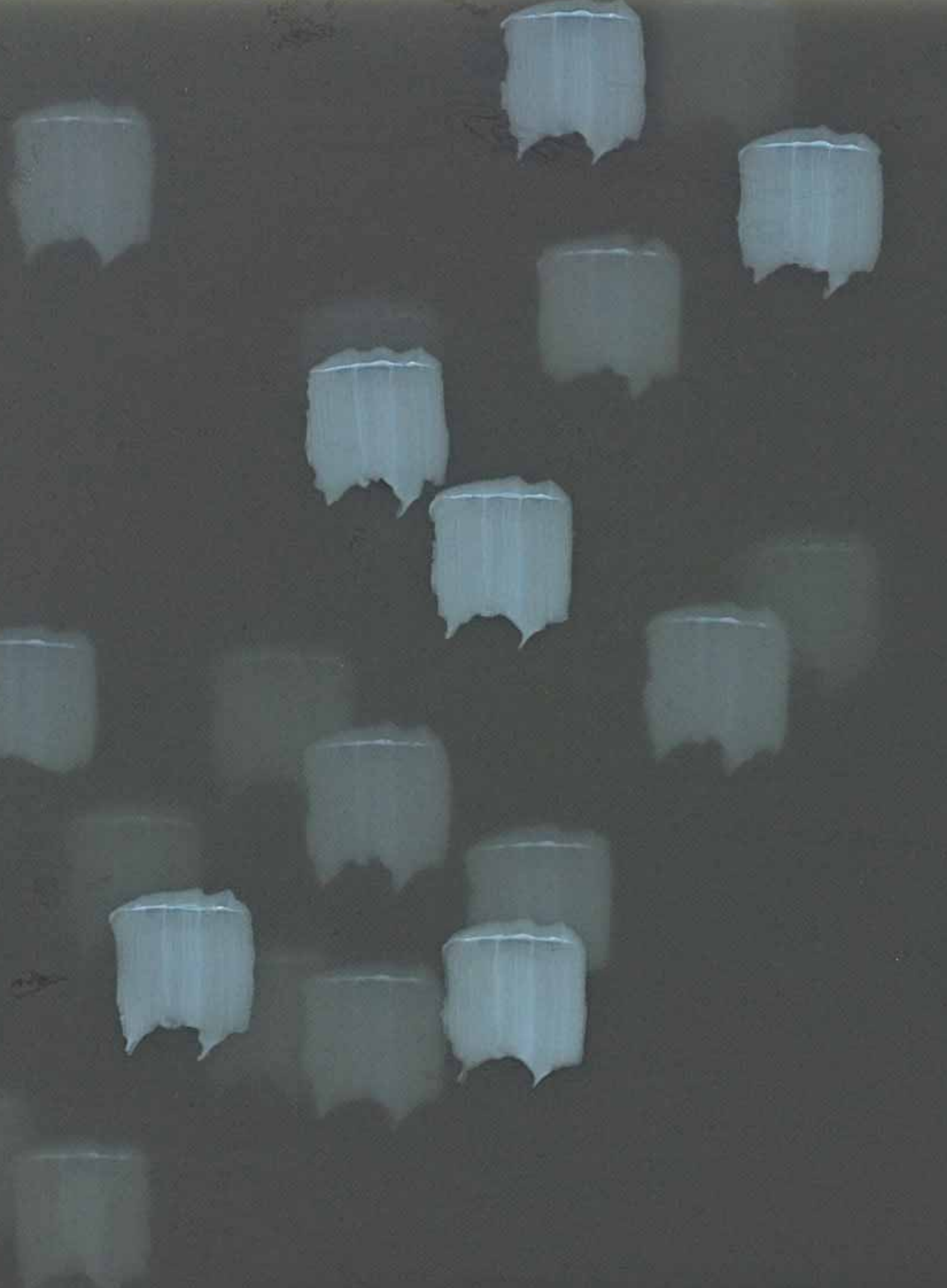


art + object





New Collectors Art

Tuesday 17 February at 6.30pm

Decorative Arts

including the John Perry Collection of early New Zealand photographs and prints, The Crawford Family Collection of New Zealand colonial furniture, Asian art and bronzes, NZ Studio ceramics and 20th century design

Wednesday 18 February at 6.30pm

Cover:
Andy Warhol, [Marilyn](#) (detail). Lot 15.

This page:
Murray Green, [Larconica No1](#) (detail). Lot 112.

Inside back:
A. R. D. Fairburn, Rare hand stamped curtain with Maori rock art designs after Theo Schoon. Lot 292.

Welcome to A+O's first catalogue of 2015 which features a range of unique and specialist collections and one of the finer New Collectors art catalogues we have ever offered.

The John Perry Collection of early New Zealand Photographs and Prints

In 2009 A+O offered a Cabinet of Curiosities, a selection of New Zealand material and Taonga from the collection of John Perry. John is well known to New Zealand collectors as a public gallery director, writer and as the proprietor of the world famous in Helensville emporium Global Village Antiques. John is an indefatigable collector, observer and cataloguer of the New Zealand vernacular and important moments in the history of our shared material culture. In this catalogue John has assembled a selection from his vast holding of early New Zealand imagery: primarily photographs and rare prints. In the spirit of 'every picture tells a story' John has recounted some of the personal history that has led him to these striking images.

His journey began in the 1960s as the educational representative on the Marlborough Regional Committee of the N.Z.H.P.T.

In preparation for the 1969 Cook Bicentenary Perry journeyed with Wellington historian Professor John Beaglehole and Historic Places Trust Chairman Ormond Wilson into the Marlborough Sounds to locate and investigate sites of historic importance for the marking with cairns where significant events had happened 200 years before.

The purchase of a house in Helensville in the late 1960s also gave rise to a surprise discovery in the form of a large number of boxes of glass plate negatives dating to

the early 20th century. Working with local photographer Clive Stone John prepared an exhibition of thirty evocative powerful images from these glass plates which toured a number of NZ art galleries in the late 1970s

A classic image of an 'unidentified maori man' was selected from this series to feature in William Main's important landmark publication *Maori In Focus* from 1976 published by Millwood Press.

In 1978 John was appointed as the Director of the Rotorua Art Gallery and curated a touring exhibition entitled King Country Journey which highlighted over 100 images of Whanganui and King Country Maori taken by Alfred Burton on his historic journey up the Whanganui River and beyond in the mid 1880s.

Later on his first visit to England in 1980 John was able to acquire copperplate engravings and books from Cook's three voyages in the Pacific. Visiting antiquarian bookshops in London and the South of England he was able to assemble over 50 engravings for the then Rotorua Art Gallery and for his personal collection.

Subsequent visits to Australia enabled John to broaden his focus into the early Pacific voyages of discovery and in the largely unexplored territory of NZ photographic history.

This long engagement with historic images of New Zealand has been a key focus of John's collecting direction for over fifty years. John Perry's NZ images can be found as Lots 354 to 399 in the catalogue.

The Davis family collection of Antique Surveying instruments and Artefacts

John W. Davis (b.1848 – d.1919) was the chief surveyor working in Tonga in the 19th century. His son Edward was also an important surveyor working in the Pacific Islands. This family collection passed from John to Edward and then to his son, the Auckland surveyor Maurice Davis. Maurice Davis worked for the New Zealand Survey Department and was then appointed chief draughtsman to the Survey department in Samoa in 1916. This superbly detailed collection has then passed by descent to the current owner and is presented in original condition, offering a rare window into these complex tools.

Also included in the Davis family collection are three very early and superb kete and a ponamu adze which belonged to Rowland Davis (b. 1807 – d. 1879) an early New Zealand settler and Irish publican and printer who arrived in Petone in 1840 on the Aurora, the first New Zealand company ship to arrive in Wellington. Rowland Davis went onto a distinguished career as a well known figure in early Christchurch history.

The Davis collection includes extremely rare and important one shilling promissory notes from the Britannia Saloon and Aurora Tavern in Wellington. Dated September 1845 and signed by Rowland Davis, the notes were printed by Davis and then exchanged in the Britannia Saloon, acting as a form of early currency at a time when there was very little actual currency available in the colony.

Whilst A+O can be described as New Zealand's 21st century auction house these material insights into our early history, both Maori and Pakeha, afford modern eyes the opportunities to understand the cultural building blocks of Aotearoa. These glimpses into our early documented past reveal that the contemporary moment very quickly becomes the realm of history.



3 Abbey Street
Newton
Auckland

PO Box 68 345
Newton
Auckland 1145

Telephone: +64 9 354 4646
Freephone: 0 800 80 60 01
Facsimile: +64 9 354 4645

info@artandobject.co.nz
www.artandobject.co.nz

Richard Orjis

Garden Cities of Tomorrow

28 February — 24 May, 2015



**Sarjeant
On the Quay**



**Sarjeant Gallery
Te Whare o Rehua
Whanganui**

38 Taupō Quay
Whanganui 4500
New Zealand

Phone 06 349 0506
www.sarjeant.org.nz

Sarjeant Gallery is a cultural facility of the Whanganui District Council

ART + OBJECT



IMPORTANT PAINTINGS AND CONTEMPORARY ART

1 APRIL

ENTRIES INVITED UNTIL MARCH 6TH

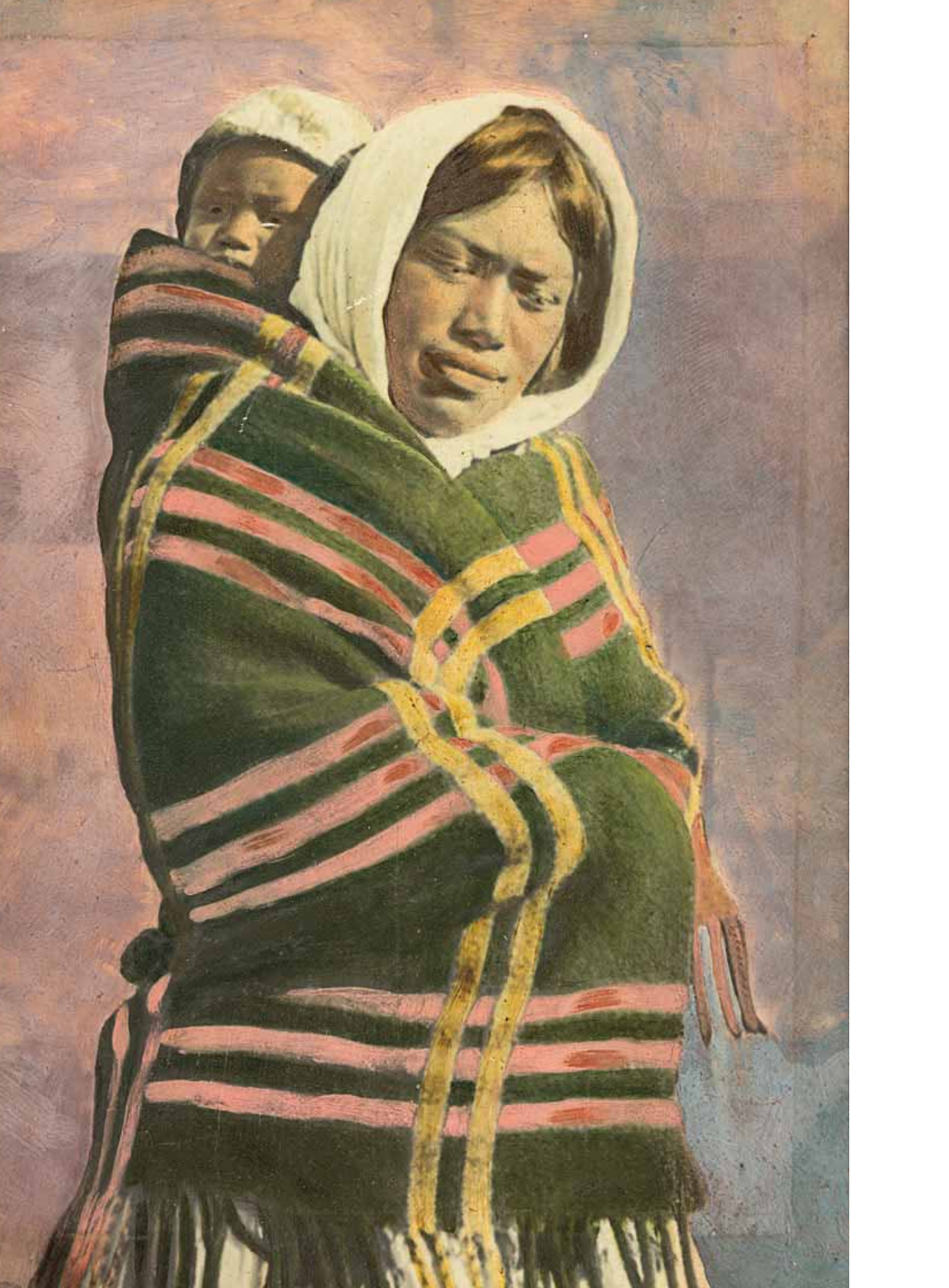
Richard Killeen
Four men and a woman in the street
oil on board, 1969
672 x 671mm
\$25 000 – \$35 000

Contact
Ben Plumbly, Director of Art
ben@artandobject.co.nz
+64 21 222 8183



The Ron Sang
Collection

Auction 5 March 2015
www.artandobject.co.nz



Decorative Arts

including the John Perry Collection of early New Zealand photographs and prints, The Crawford Family Collection of New Zealand colonial furniture, Asian art and bronzes, NZ Studio ceramics and 20th century design

AUCTION

Wednesday 18 February at 6.30pm
3 Abbey Street, Newton, Auckland

VIEWING

Friday 13 February, 9.00am – 5.00pm
Saturday 14 February, 11.00am – 4.00pm
Sunday 15 February, 11.00am – 4.00pm
Monday 16 February, 9.00am – 5.00pm
Tuesday 17 February, 9.00am – 1.00pm
Wednesday 18 February, 9.00am – 1.00pm

All lots illustrated at www.artandobject.co.nz

Lot 394
Photographer Unknown
'Maori Woman and Child with
Blanket'. Unique hand coloured
photograph, c. 1910
\$200 – \$400



208

Asian Art

200. A collection of sixteen various pieces of Chinese pottery from the Tek Sing Shipwreck & three Japanese blue and white sake cups. D. 175mm max \$80 – \$120
201. Three 19th century Chinese blue and white garniture lidded vases, (one lid missing). H. 250mm \$80 – \$120
202. Chinese three-piece armorial-style suite, including two lidded vases and a punch bowl D. 310mm \$80 – \$120
203. Pair of Chinese white crackled glaze baluster vases. H. 325mm \$50 – \$100
204. Chinese Blanc de Chine figure of an Arhat. H. 145mm \$50 – \$100
205. Chinese egg-shell white porcelain cup, painted in anhua-style to the interior with scrolling dragons, spurious Chenghua mark to the base. D. 80mm \$250 – \$400
206. Chinese famille rose baluster vase, probably Republic Period, finely painted with a beautiful lady and lines of calligraphy, seal mark to the base. H. 220mm \$400 – \$600
207. Chinese famille rose baluster vase, probably Republic Period, finely painted with an Immortal and lines of calligraphy, seal mark to the base. H. 220mm \$400 – \$600
208. Chinese famille rose porcelain five-panelled screen, Republic Period (1912 – 1949), painted in the central panel with three scholars at leisure in a garden with attendants, the side panels with portraits of famous scholars, each panel inscribed and with seal marks. The central panel inscription celebrates the promotion of an official to a higher office, however part of the inscription (probably including the name of the actual official) has been scratched off. H. 1045mm Provenance: From the Collection of the late Dr R K McAll. \$6000 – \$8000
- Born in China by British parents, Dr McAll worked as a medical missionary there in the 1930s. After the war, during which he was interned by the Japanese, he returned to the UK and he became a collector of Chinese artefacts. The core of his collection was sold by Christie's in the UK in the early 2000s. Dr McAll probably acquired this screen in China in the 1960s/1970s.*
209. Japanese Imari charger, Meiji period, densely decorated with floral panels. D. 335mm \$300 – \$500
210. Large Japanese Kutani lidded bottle vase, Meiji Period, marked. H. 320mm \$150 – \$300
211. Pair of Japanese Imari vases, late Meiji period, with applied scrolling dragon to the body. H. 215mm \$100 – \$200
212. Japanese Imari shaped bottle vase, Meiji period. H. 190mm \$50 – \$100
213. Japanese Imari bowl, Meiji Period, together with an English silver plated cake server. The bowl, 145mm \$50 – \$80
214. Japanese bronze figure of Hotei, 20th century, cast as standing carrying his bag and holding his hammer. H. 180mm \$100 – \$200



- 206
- 207
- 225
- 219
215. Miniature Japanese bronze lidded censer, H. 105mm together with a small bronze elephant group supporting a glass sphere, and a bronze stand supporting a glass sphere \$100 – \$200
216. A pair of Japanese bronze censers, Meiji Period, cast with shishi lions to the lids, marked. H. 260mm \$150 – \$300
217. Japanese cloisonné vase, Meiji period. H. 260mm \$50 – \$80
218. Small Chinese bronze censer with loop handles on wood stand, late Qing dynasty. W. 105mm \$100 – \$200
219. Chinese bronze lidded tripod censer, late Qing dynasty, with archaistic decoration and upright handles. H. 200mm \$150 – \$250
220. Small 19th century Chinese cast bronze scholar seated whilst reading a text. H. 90mm \$100 – \$200
221. Nepalese bronze figure of Green Tara, the female bodhisattva of enlightened activity, seated on a lotus throne in the posture of royal ease with left leg extended. Her left hand holding the stem of an upala flower which blossoms with a varja at her shoulder. H. 170mm \$500 – \$800
222. Indian carved ivory figure of a flute player. H. 110mm \$100 – \$200
223. Japanese ivory okimono, Meiji period, carved with a samurai fighting with two tengu, signed. H. 135mm \$500 – \$800
224. Japanese ivory okimono, Meiji period, carved with a man smoking a pipe and carrying a young boy holding a parasol on his back, signed. H. 145mm \$250 – \$500
225. Japanese ivory okimono of a sumo player on wooden stand, Meiji Period. H. 70mm \$300 – \$600
226. Japanese painted ivory netsuke, Meiji Period, carved as a wood carver smoking a pipe on wooden stand, signed. H. 40mm \$150 – \$300
227. Japanese ivory netsuke of a farmer, 20th century, signed. H. 50mm \$30 – \$50
228. Group of five Chinese archaistic-style jade and hardstone beads. H. 35mm max \$100 – \$200
229. Chinese pale celadon jade seal, carved with a chilong to the top, wood box. H. 95mm \$100 – \$200
230. Tibetan brass singing bowl with beater. D. 105mm \$50 – \$80
231. Chinese bone beads necklace \$30 – \$50
232. Chinese hardwood side table with two drawers. W. 955mm \$100 – \$200
233. Wooden Buddhist votive stele. H. 550mm \$40 – \$80



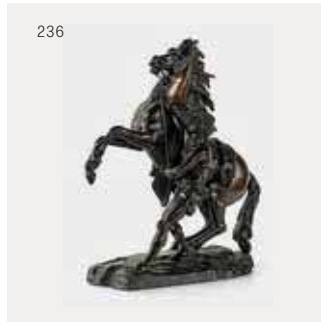
Decorative Arts

234. German KPM porcelain plaque depicting a young lady wearing a long tunic in a classical surround, stamped mark. 230 x 160mm
\$1000 – \$2000
235. German KPM porcelain plaque, depicting a young lady playing with caged birds. 230 x 160mm
\$1000 – \$2000
236. 19th century bronze figure of a Marly horse after Guillaume Coustou (1677-1746). H. 440mm
\$1000 – \$1500
237. Claude Michel Clodion (1738-1814) Two Bacchantes dancing with a satyr in cast bronze with dark brown patina, signed 'Clodion' and dated 1762. H. 580mm, with an ebonised wood stand
\$3500 – \$5000
238. An impressive 19th century English ebonised bracket clock, ormolu mounted with a dome surrounded by a balustrade, side handles, bracket feet and two columns flanking the main panel. The white enamel dial with ormolu foliate surround and three subsidiary dials. Maker: Elkington & Co., London. H. 790mm
\$4000 – \$6000
239. Victorian chaise longue with buttoned back in blue velour cover
\$300 – \$500
240. Cameo back couch on cabriole legs with original white porcelain casters and pink velour upholstery
\$300 – \$500
241. Victorian mahogany toilet mirror held on barley twist supports on a serpentine base. W.550mm
\$100 – \$200
242. Victorian mahogany toilet mirror, the mirror held on foliate carved supports with pine cone finials. W.800mm
\$100 – \$200
243. Decorative Swedish gilt wood wall clock
\$150 – \$300
244. Early 19th century French Empire style mantle clock, mercury gilded with 24ct gold, the white enamel dial with Roman numerals, surmounted by a figure playing the lute. Circa 1820
\$4000 – \$4500
245. Late 19th century French mantle clock with white marble plinth base and 24ct gold mercury gilded case, the white enamel dial surmounted by an urn finial. Eight day bell striking movement
H.280mm W.200mm
\$3500 – \$4000
246. An Edwardian Georgian style corner cupboard with dentil cornice blind fret carved frieze, astragal glazed door the lower section with a panelled door. H. 2050 x W. 600mm
\$300 – \$500

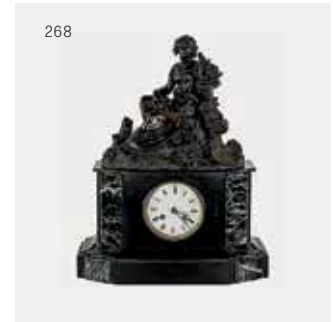
247. George III period mahogany secretaire bookcase, the upper section with dentil cornice above astragal glazed doors enclosing three shelves, the lower section with a secretaire drawer with a fitted interior above panelled cupboards on bracket feet. H. 2060 x W. 1100mm
\$2500 – \$3500
248. A good 18th century oak Welsh dresser. The upper section with three shelves and two cupboards, the lower section with panelled cupboards flanked by three drawers with brass swan neck handles. L.1950mm H.1960mm
\$12 000 – \$15 000
249. An 18th century oak court cupboard of good proportions. The upper section with panelled cupboards, the lower section with two drawers above panelled cupboards. H.1750mm W.1140mm
\$5000 – \$8000
250. 19th century English beech linen press with panelled doors above two small drawers above two full width drawers on a platform base. H. 2080 x W. 1200mm
\$600 – \$1200
251. 19th century coromandel wood card table, with veneer top inset and side panels. 440 x 880mm
\$800 – \$1200
252. Victorian coromandel wood writing box
\$100 – \$200
253. A rare taxidermy Hawksbill turtle. 700 x 420mm
\$1000 – \$2000
254. A large giraffe skin floor rug
\$2500 – \$3500
255. Zebra skin floor rug
\$1500 – \$2000
256. Two antique Continental cast bronze items, comprising a bell and a small jug. H. 105mm max
\$80 – \$120
257. A pair of English Regency-style bronze candlesticks (one damaged). H. 240mm together with a pair of brass candlesticks
\$100 – \$200
258. A tall bronze vase stand decorated with shield and arrow motif. H. 310mm
\$150 – \$300
259. A group of six plated silver vessels, comprising a rose bowl, a coffee pot, a pair of gravy boats, an oriental cup and saucer and a lid
\$50 – \$80
260. Sterling silver two-piece Christening set, London, the napkin ring by Henry Holland, 1879 and the spoon by John Aldwinckle and Thomas Slater, 1884
\$80 – \$120
261. Six piece silver plated cruet set
\$40 – \$80



236



268



262. Sterling silver pouring vessel, Chester, 1920 together with a small continental silver waiter
\$80 – \$120
263. A bronze model of a walnut and three scales
\$50 – \$80
264. Two treen porringers, one of elm, the second of lignum vitae wood. W. 105mm max
\$40 – \$80
265. Pair of Georgian silver plated gravy boats. L. 180mm
\$80 – \$120
266. Plated silver tureen and cover. W. 390mm
\$100 – \$200
267. Copper watering can. L. 650mm
\$40 – \$80
268. 19th century marble mantle clock with circular white enamel dial and roman numerals, a bronze figure of a young peasant woman to the top. W. 370mm
\$800 – \$1200
269. Cassell's Illustrated Family Bible, Cassell & Company Ltd, London, Paris & New York
\$50 – \$80

253



Maori Artefacts and other items of NZ interest

270. A muka kete (flax fibre bag) of generous proportions with double pair twining and complex cross weave patterning. 440 x 440mm Y14598
\$350 – \$500
271. Maori figure with paua disc eyes carved holding a patu aloft
H.400mm
\$50 – \$100
272. A large piece of polished kauri gum. L. 240mm. W. 240mm
\$100 – \$200
273. Pa Kahawai (Fishing lure) with paua shell shank, iron hook with muka lashing and original muka line. L. 130mm. Y13647
\$400 – \$600
274. Pa Kahawai with wooden shank, paua shell inlay & iron hook. L. 90mm. Y10621
\$300 – \$500
275. Toki Pounamu, kawakawa variety, L. 80mm, Y14768; together with a piece of polished pounamu
\$200 – \$300
276. Pounamu scraper. L. 90mm. Y14687
\$100 – \$200
277. Pounamu kuru pendant, kawakawa variety with attached gilt brass suspension ring. L. 60mm. Y13505
\$80 – \$120



The following collection of promissory notes and artefacts belonged to Rowland Davis an early settler from Ireland. Rowland Davis arrived in New Zealand on the first settler ship The Aurora in January 1840. After arriving in Wellington Davis set up one of the first taverns at Petone in Wellington – the Britannia Saloon, Aurora tavern.

278. Four very rare and important one shilling promissory notes from the Britannia Saloon, Aurora tavern in Wellington. Each note inscribed *Wellington New Zealand 1845, Britannia Saloon, Aurora Tavern: On presentation of five of these notes I promise to pay the Bearer the sum of Five shillings in Goods or Government Debentures*, each dated September 1845 and signed by Rowland Davis. These notes were printed by Rowland Davis and then exchanged in the Britannia Saloon by patrons, acting as a form of early currency at a time when there was very little actual currency available in New Zealand \$500 – \$1500

279. Muka Kete, robustly constructed with double pair twining and cross weaved pattern and substantial fringe. 230 x 230mm. Y registration pending \$350 – \$500

280. An early 19th century muka Kete decoratively feathered with kereru (native pigeon) tui and Kiwi feathers. Circa 1845. 200 x 200mm. Y registration pending \$750 – \$1200

281. An early 19th century muka Kete decoratively feathered with kereru feathers. Circa 1845. 140 x 190mm. Y registration pending \$500 – \$800

282. Pounamu adze. Provenance: Ploughed up on the ancient pa site Pahia on the sea coast near Orepuki, Southland. Given to Mr Rowland Davis. Y registration pending \$100 – \$200

283. Mike Higgs
A rare inanga pounamu double sided Hei-tiki, one head with red wax eyes the other with cut paua shell eyes. 130 x 70mm \$2000 – \$3000

284. Kotahi handmade crushed marble Maori chess set in original box \$300 – \$500

285. New Zealand silver and pounamu knife rests, the legs modelled as ferns. L.65mm \$150 – \$250

286. Levi Borgstrom scoop with pierced avian head, original label affixed to the bowl. L. 200mm \$350 – \$500

287. Levi Borgstrom ladle. L.350mm \$300 – \$500

288. Levi Borgstrom ladle. L. 320mm \$300 – \$500

289. Levi Borgstrom spoon. L.270mm \$250 – \$300



281



290. Levi Borgstrom spoon L. 260mm
\$250 – \$300

291. Levi Borgstrom scoop. L. 170mm
\$250 – \$350

292. A.R.D. Fairburn
Rare hand stamped curtain with Maori rock art
designs after Theo Schoon.
L. 2370 x W. 1160mm
\$3500 – \$5000

293. New Zealand colonial totara glove box with
inlaid starburst pattern in kauri, rimu, matai,
rewa rewa and numerous other timbers.
290 x 120mm
\$400 – \$600

294. New Zealand chip card side table. D. 390mm
\$100 – \$200

295. New Zealand kauri colonial side table with a
chequerboard design inlaid in rewarewa.
W. 350mm
\$80 – \$120

296. Manatunga wool travel rug decorated with a
tukutuku panel design in yellow, brown and
black. Original label attached
\$400 – \$600

297. Kaiapoi wool travel rug in brown, green and
red. Original chiefs head label attached
\$250 – \$400

298. Manatunga wool travel rug in grey brown and
yellow, traces of the original label remain
\$200 – \$300

299. New Zealand 1970s wool rug in red, yellow and
black
\$200 – \$300

300. Te Ariki Onehunga Mills NZ wool travel rug
with a Maori tukutuku design in brown red and
white. Original label attached
\$200 – \$300

301. Manatunga (Maori for Keepsake) wool travel
rug with a tukutuku panel inspired design in
red, green, black and white. Original label
attached
\$300 – \$500

302. New Zealand pottery vase slip cast with Maori
figural decoration. H. 160mm
\$80 – \$120

303. Rare small titoki liquor bottle modelled as a
Maori pou pou figure. H. 160mm
\$100 – \$200

304. Whites Aviation large hand coloured
photograph of Auckland depicting the Harbour
Bridge in the foreground. Whites inscription to
the bottom right hand corner, the other corner
inscribed Auckland. 770 x 1200
\$600 – \$1200

305. Sperm whale tooth with contemporary Maori
carving, one side featuring a wheku head and
the other with an ancestral figure. L.170mm
\$500 – \$600



279



286

291



282



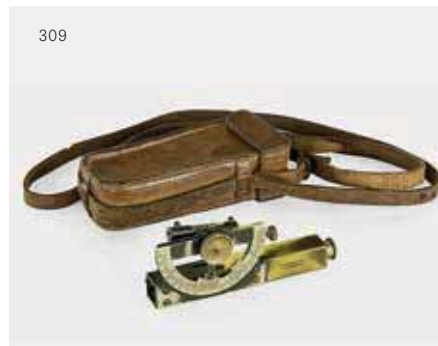
283



The Davis family collection of Antique Surveying instruments

John W. Davis was the chief surveyor working in Tonga in the 19th century. His son Edward was also an important surveyor working in the Pacific Islands. This collection passed from John to Edward and then to his son, the Auckland surveyor Maurice Davis. Maurice Davis worked for the New Zealand Survey Department and was then appointed chief draughtsman to the Survey department in Samoa in 1916. The current owner Judith Davis then inherited the collection from her father.

- 306. A late 19th century surveyor's knife, fork and spoon set with ivory handles in fitted leather sheath
\$100 – \$200
- 307. Two puriri leather knives and a later kauri letter knife
\$30 – \$50
- 308. Three leather pouches
\$30 – \$50
- 309. 19th century T. Peacock & Son, Auckland, New Zealand brass surveyor's level complete with fitted leather case
\$200 – \$400
- 310. Brass surveyor's level in fitted wooden case. L. 110mm
\$100 – \$200
- 311. Maurice Davis surveyor's leather satchel and contents including plum bob, pencils, tape measures, notebooks with notations, logarithmic tables and survey maps
\$150 – \$250
- 312. Brush & Mae Donnell, Melbourne brass surveyor's measuring wheel, cased
\$200 – \$400
- 313. A good 18th century circumferentor or surveyor's compass by Troughton and Sons, London, complete in original fitted case. L. 310mm
\$500 – \$1000
- 314. A collection of surveyor's books including mathematical tables, notebooks, logs and regulations (8 vols.)
\$50 – \$100
- 315. Shampaloup and Edmiston Stationers, Auckland cased compass, together with another compass
\$50 – \$100
- 316. A cased set of 19th century ivory rulers by Elliott of London, in fitted case
\$100 – \$200
- 317. Three box wood rulers by J Rabone & Sons, Birmingham
\$100 – \$200



- 318. A collection of eleven wooden rulers by English makers, including Reeves & Sons, J Rabone & Son and Stanleys
\$100 – \$200
- 319. Two Whenuapai aerial photographs, used in the surveying process by Maurice Davis
\$30 – \$50

Crawford Family Collection of colonial furniture

- 320. Colonial kauri cabinet with architectural pediment and single drawer above a recessed shelf with two panelled cupboard doors to the base. H. 1600 x W. 750mm
\$400 – \$600
- 321. Colonial kauri hall stand with bevel edged mirror below a section with a single drawer flanked by open compartments and raised on turned legs. H. 2100 x W. 900mm
\$400 – \$800
- 322. Colonial kauri wall shelf with two drawers above open compartments with three drawers to the lower section. H. 730 x W. 800
\$200 – \$400
- 323. William Norrie (attributed)
Kauri specimen table the top inlaid with a starburst design in kauri and various other native timbers with a single shelf to the base and raised on splayed legs. W. 480 x H. 740mm
\$2500 – \$3500
- 324. Colonial solid mottled kauri bookcase, the upper section with glazed panelled doors the lower section with two frieze drawers above panelled cupboards raised on a platform base. H. 2160 x W. 1140mm
\$4000 – \$8000
- 325. A large 19th century kauri gum bust of a Maori chief with ta moko. H. 360mm
\$1500 – \$3000
- 326. Colonial mottled kauri davenport with original tooled leather top above barley twist supports on a platform base with four drawers to one side and dummy drawers to the other. W. 540 x H. 860mm
\$1000 – \$2000
- 327. A colonial kauri table with geometric cube pattern inlaid to the top and raised on turned legs. W. 600 x H. 799mm
\$800 – \$1200
- 328. A superb colonial French empire style breakfront sideboard with a single shelf to the upper section with restrained serpentine carving centred by Prince of Wales feathers in relief above a radial cut puriri top, the lower section with three cupboards faced with burr totara flanked by engaged columns on a platform base. W. 1540 x H. 1400
\$2500 – \$3500

325



324



328



323



339





329



341



331

329. Colonial solid totara and figured puriri chest of drawers, two small drawers above two full width drawers with Victorian facet cut glass drawer pulls. 960 x 960mm
\$2000 – \$3000
330. William and James Norris
Colonial dressing table of serpentine form in solid mottled kauri, burr totara and rimu with an oval mirror over a lidded glove department flanked by six small drawers, raised on turned legs on a platform base. Circa 1870 W. 1300.
This piece is almost identical to a dressing table by William and James Norris held in the collection of Heritage New Zealand and on display in the master bedroom at the Historic home Alberton
\$2500 - \$3500
331. An important Colonial kauri scotch chest the upper section full width blanket drawer in radial cut kauri with mottled totara fascia above two small drawers above three full width drawers with figured burr kauri fascias and carved handles, flanked by engaged columns on a platform base. H. 1200 x W. 1400mm
This scotch chest together with a matching duchess was presented to C.F. Goldie by the Waikato tribes in appreciation for the painting of a portrait. Provenance: Estate sale of Goldie's daughter. Sold by Gregory Waite Antiques. Supporting provenance details available on request.
\$4000 – \$8000
332. Colonial solid mottled kauri dressing table with central mirror flanked by two small drawers, each pedestal with four drawers with turned handles. W. 1200 x H. 1650mm
\$1000 – \$1800
333. Colonial kauri single bed with bobbin turning.
\$300 – \$500
334. Colonial kauri hall table with a single drawer, original brass tear drop handles raised on turned legs. W. 1000mm
\$500 – \$1000
335. Late 19th century mahogany caved china cabinet with two glazed doors. W. 1000 x H. 1000
\$300 – \$500
336. An impressive colonial kauri dressing table, marquetry inlaid with mottled kauri, totara, rewarewa and other native timbers, with central full length mirror flanked by a bank of eight drawers each pedestal additionally with four small drawers.
\$1800 – \$2500
337. Colonial kauri half tester bed.
\$1200 – \$1800
338. Pair of mottled kauri mirrors each with bevel edge.
\$400 – \$800
339. Pair of mottled kauri bedside cabinets each with white Carrara marble top.
\$1000 – \$1500
340. Colonial kauri washstand with architectural pediment with two small drawers and panelled cupboard raised on turned legs. W. 1200mm
\$800 – \$1400
341. Colonial kauri scotch chest central mottled kauri drawer flanked by small drawers above three full width drawers above a platform base on bun feet with applied acanthus mouldings. H. 1280 x W. 1200mm
\$2000 – \$3500
342. Colonial kauri bookcase chiffonier, the upper section with a gallery top above two glazed doors the lower section with cylinder to open to reveal a mottled kauri finished interior above panel doors on a platform base. W. 1500 x H. 2600mm
\$2500 – \$4000
343. Colonial kauri chiffonier up stand back with serpentine shaped single frieze drawer over mottled panelled cupboards on a platform base.
\$1000 – \$1800
344. Colonial mottled kauri wash stand with white marble top, panelled cupboard door raised on turned legs. W. 930 x H. 1250mm
\$600 – \$1200
345. Colonial mottled kauri dressing table, the superstructure with a bevel edge mirror flanked by two small drawers above two full width drawers, original casters. W. 1250 x H. 1940mm
\$1200 – \$1800
346. Mottled kauri colonial double bed
\$500 – \$1000
347. Kauri and mottled kauri wardrobe with architectural pediment above a central door with full length mirror with a single drawer to the base. H. 2.2m x W. 1200mm
\$800 – \$1400
348. A rare totara colonial scotch chest with ogee drawer above a hat drawer with two drawers to one side and two dummy drawers to the other side over three full width drawers with attached integral table to the side. H. 1340 x W. 1230mm
\$2500 – \$4000
349. Full size Kauri colonial cheval mirror with serpentine scroll supports on a platform base. H. 1600 x W. 750mm
\$400 – \$800
350. Mottled kauri wall cabinet. H. 670. W. 500mm
\$400 – \$800
351. Kauri colonial wardrobe, the door with bevel edged mirror. W.980mm H. 1960mm
\$300 – \$500
352. A Kauri colonial bookcase with stepped cornice, the glazed panelled door enclosing three shelves
H. 1300mm W. 1190mm
\$400 – \$800

353. The Elmslie Sideboard

An oak and Kauri New Zealand Arts and Crafts sideboard with carving and copper repousse work by Jessie Campbell (nee Elmslie) Born in Wanganui in 1869, Campbell was the daughter of Dr Rev John Elmslie, congregational minister responsible for the building of St Pauls in Cashel Street, Christchurch. One of his parishioners was a wood carver who taught the Elmslie daughters carving skills. Family correspondence details this sideboard as having been made before Campbell's marriage in 1891. The pediment resembles a Martin Brothers

grotesque, the superstructure is fitted with panels of dragons and dolphins above and flanking a convex copper mirror. The base has conforming panelled doors and drawers with lion mask handles, the copper handles confirm to traditional Arts and Crafts style Reference: *At Home, A Century of New Zealand Design*, Douglas Lloyd Jenkins, 2004. Page 17, an illustration of the sideboard photographed by Frank Denton in Wanganui in 1906 at Campbell's home. W.1850mm H.2560mm \$5000 – \$8000



The John Perry collection of Maori images and other photography

354. After Isaac Gilsenan
'Murderers Bay'. Copperplate engraving. This is the first image of Maori people drawn by a European artist, showing a crew of Maori in a double-hulled canoe in what is now known as Tasman Bay.
\$250 – \$350
355. After Sydney Parkinson
'Tetê d'un Guerrier de la Nouvelle Zelande' ('Head of a warrior of New Zealand.'). Copperplate engraving. This is the first portrait of a Maori person, from the East Coast of the Nth. Island, drawn by a European artist.
\$200 – \$300
356. Herman Diedrich Sporing
'A Fortified Town or Village Called a Hippah (Pa), Built on a Perforated Rock, at Tolaga in New Zealand'. Copperplate engraving, c. 1769
\$200 – \$400
357. After Sydney Parkinson
'War Canoe of New Zealand with a view of Gable End Foreland'. Copperplate engraving
\$150 – \$250
358. After Sydney Parkinson
'Coffre Sculte des Habitans de la Nouvelle Zelande' ('A Chest of New Zealand, as a speciman of the carving of the country'), publisher: Alex Hogg and 'Bludgeons used as Weapons by the New Zealanders and called Patoo-Patoo's as seen on the Side the Edge and the End'. Both copperplate engravings, c. 1770
\$200 – \$400
359. William Hodges
'A Family at Dusk Bay, New Zealand'. Copperplate engraving, c. 1775
\$200 – \$400
360. William Hodges
'Family in Dusk Bay, New Zealand'. Copperplate engraving, c. 1775
\$100 – \$200
361. Unknown Artist
'Insulaire de la Nouvelle Zelande'. Rare and early hand tinted copperplate engraving
\$200 – \$300
362. Jean Piron
'Uomo e Ragazza della Nuova Zelanda' ('A man of and a woman of New Zealand'), from the 'Voyage in Search of la Perouse'. Hand tinted lithograph, c. 1800
\$150 – \$250
363. August Earle
'The Wounded Chief Hongi and his family, Bay of Island'. Hand tinted lithograph, 1828
\$500 – \$700
364. John William Lewin
'A Hoodee of Gunna Chief of Rangee Hoo'. Hand tinted lithograph, London: G. & W.B. Whittaker, 1824. Gunna Chief was the first Maori to sell land to the missionaries in the Bay of Islands in 1815
\$150 – \$250
365. Joseph Jenner Merrett
'Te Kauwau, Chief of the Ngati Te Whatau Tribe' and 'Hira, One of the Sons of Te Kauwau – Paora, Nephew of Te Kauwau'. Hand tinted lithograph, London 1842. Drawn on stone and printed by P Gauchi. From Charles Terry, 'New Zealand, It's Advantages and Prospects as a British Colony'.
\$250 – \$350
366. Louise Auguste de Sainson
A lithograph illustrating the Maori canoes of Tolaga Bay and Bream Bay, New Zealand
\$200 – \$300
367. Richard Aldworth, Captain Oliver
'Te Nancihaeta – New Zealand Chief'. Hand tinted lithograph. The mere pounamu (hand weapon) held by Te Rangihaeata is called Te Tuihawai. It originally belonged to Te Rauparaha. The mere was received from the Ngai Tahu chief Te Matenga Taiaroa in exchange for a war canoe named Wai-Ka-Hua.
\$500 – \$1000
368. George French Angas
'House of Iwikau, brother of Te Heuheu, and Falls of Ko Waihi at Te Rapa, Taupo Lake'. Hand tinted lithograph from The New Zealanders Illustrated, 1847
\$200 – \$300
369. George French Angas
'To Ohu – An Old Tohunga or Hearthen Priest' and 'Ko Tauwaki and Ko Teoniongā – Taupo'. Hand tinted lithograph from The New Zealanders Illustrated, 1847
\$200 – \$300
370. George French Angas
'Horomona Marahau – Blind Solomon'. Hand tinted lithograph from 'The New Zealanders Illustrated', 1847
\$200 – \$300
371. George French Angas
'Lamentation over a Deceased Chief'. Hand tinted lithograph from 'The New Zealanders Illustrated', 1847
\$200 – \$300
372. George French Angas
'E Pori and her daughter E Rangi Wawa'. Hand tinted lithograph from 'The New Zealanders Illustrated', 1847. Original John Leech Gallery label verso, 1967
\$200 – \$300
373. Charles Decimus Barraud
'Te Puni' and 'Rangihaita'. Two hand tinted lithographs from 'The New Zealand, Graphic and Descriptive', London 1877
\$250 – \$500
374. Wilhelm Dittmer
'The Keeper of Pahikaure'. Chromolithograph, 1906, Christchurch Press Co. Ltd. Portrait of Maori Woman Te Rerehau Kahotea (Wife Te HeuHeu V) Holding the Mere Pahikaure, a Taonga of the Ngati Tuwharetoa.
\$350 – \$500
375. Charles Frederick Goldie
'A Hot Day – Patara Te Tuhi'. Chromolithograph, 1823 – 1910. Supplement to the 'New Zealand Illustrated', the Christmas number of the Weekly Press, 1904 Patara Te Tuhi was a favourite subject of Goldie. This early popular chromolithograph along with 'A Good Joke' enabled Goldie's 'Paintings' to be appreciated by a much wider audience.
\$350 – \$600
376. Foy Brothers (Thames)
Portrait of a young Ngati Maru woman wearing korowhai and hei tiki. Original carte de visite, c. 1865
\$150 – \$250
377. John McGarrigle (American Photographic Company)
Full length portrait of man wearing korowhai. Original carte de visite, c. 1865
\$150 – \$250
378. E. Pulman, Auckland photographer
Portrait of Rewi Maniapoto and his son. Original carte de visite, c. 1870
\$200 – \$300
379. John McGarrigle (American Photographic Company)
Portrait of a Maori gentleman in European suite. Original unmounted carte de visite, c. 1870
\$100 – \$200
380. John McGarrigle (American Photographic Company)
Portrait of a Maori woman. Sepia toned contact print from the original glass plate negative in the National Museum, c. 1870. Illustrated in William Main, 'Maori in Focus – A Selection of Photographs of the Maori from 1850-1914', p. 31
\$50 – \$100
381. John McGarrigle (American Photographic Company)
Portrait of a Maori woman. Sepia toned contact print from the original glass plate negative in the National Museum, c. 1870. Illustrated in William Main, 'Maori in Focus – A Selection of Photographs of the Maori from 1850-1914', p. 30
\$75 – \$150
382. John McGarrigle (American Photographic Company)
Two full length portraits of Maori men in photographic studio environments. Sepia toned contact prints from the original glass plate negatives in the National Museum, c. 1870
\$150 – \$250



354



365



355



363



374



359



363



359



376



381



371



395



396

383. John McGarrigle (American Photographic Company)
Two studio portraits of Maori women, one with 'whaka' tattoo on one arm, the other with lip and chin moko. Sepia toned contact prints from the original glass plate negatives in the National Museum, c. 1870
\$150 – \$250
384. John McGarrigle (American Photographic Company)
Two studio portraits of a young Maori man holding Polynesian clubs and wearing exotic feathers in his hair and beard. The first is a sepia toned contact print from the original glass plate negative in the National Museum, c. 1870; the second is a black and white print via the Burton Brothers, Dunedin.
\$150 – \$250
385. Burton Brothers (Alfred Burton), Dunedin
Three images from the King Country & Taranaki, May 1885: 'Rane' at Taumaranui – King Country; The Fair 'Orini' at Ti Eke – King Country; Tuohu (a Maori Belle in ball dress), Parihaka. All black and white contact prints (1975) from the original glass plate negatives in the National Museum, 1885. 'Rane' and 'Orini' illustrated in William Main, 'Maori in Focus – A selection of photographs of the Maori from 1850-1914', p. 52 and 54
\$300 – \$500
386. Burton Brothers (Alfred Burton), Dunedin
'At Taumaranui King Country', May 1885. Original large format carbon print, c. 1910. Published by Muir & Moodie, Dunedin, no. 3573
\$350 – \$500
387. Photographer unknown
'Group showing Maihi Paraone Kawiti O'Waiomio. Rangatira no Ngapuhi. Tere Tana Hoa wahine = Wi Kupa = Major Dane, American Literateur, T.P. Moody, Edward Hansen & others of the Bay of islands.'. Original vintage photograph, c. 1880
\$250 – \$350
388. J.R. Blencowe
'Nurse and child' and 'Maori mother'. Contact prints from the original glass plate negatives taken in Rotorua near the beginning of the 20th century.
\$200 – \$300
389. J.R. Blencowe
'Mother and child' and 'Maori cooking operations, Rotorua'. Original vintage hand coloured contact prints from the original glass negatives taken in Rotorua near the beginning of the 20th century
\$200 – \$300
390. James McDonald
'Te Rerehau of Taupo – Wife of Te Heuheu, Paramount Chief of Tu Wharetoa and Kahotea – Her Son'. Contact print from the original glass plate negative in the National Museum, c. 1910. Provenance: Alistair Taylor Collection. Illustrated in 'C.F. Goldie, Prints, Drawings and Criticism', p. 133 and William Main's, 'Maori in Focus – A Selection of Photographs of the Maori from 1850-1914', p. 72
\$200 – \$300
391. Photographer Unknown
A full length portrait of a young Maori woman holding a carved decorative paddle (Hoe) from the Rotorua School of Carving. Contact print from the original glass plate negative in the Rotorua Museum, c. 1910
\$100 – \$200
392. Arthur James Iles
Full length portrait of a young Maori girl in studio 'bush setting'. Vintage hand coloured photograph, c. 1910
\$150 – \$250
393. A collection of three portraits of Maggie Papakura, including an original postcard 'Guide Maggie, Rotorua no. 16', signed 'Aroha – Maggie Papakura'; and two contact prints by J. Blencowe, the first a double portrait of Maggie Papakura and her sister Bella, photographed in the window of Tene Waitere's carved house Rauru; the second a portrait of Maggie Papakura wearing korowhai, head scarf and hei tiki, c. 1910
\$300 – \$500
394. Photographer Unknown
'Maori Woman and Child with Blanket'. Unique hand coloured photograph, c. 1910
\$200 – \$400
395. Photographer Unknown (Auckland)
Full length studio portrait of a young Maori man with bentwood chair and flower arrangement. Contact print from the original glass plate negative from the John Perry Collection, c. 1912. Illustrated in William Main, 'Maori in Focus – A Selection of Photographs of the Maori from 1850-1914', p. 74
\$150 – \$250
396. Photographer Unknown
Double portrait of Maori men in top hats and tails, in front of a banner advertising the Ratana Maori Lady Orchestra performing at the Drill Hall, Friday the 6th of July. Contact print from the original glass plate negative in the National Museum, c. 1925
\$100 – \$200
397. Photographer Unknown
Maureen Kingi (Miss New Zealand 1962) and Wihapi (Hapi) Wineata in 'traditional' Maori costumes, cooking using traditional Maori methods at Whakarewarewa, Rotorua. Original hand-coloured photograph, c. 1964
\$150 – \$250
398. Arthur Iles (1870-1943)
Maori portrait, c. 1905
silver gelatin print
signed and with imprinted with number 107
196 x 140mm
\$250 – \$350
399. Portrait of Guide Susan wearing a hei-tiki, c. 1900
albumen print
signed with initials JM, imprinted title and number 175
200 x 140mm
\$300 – \$500



390



385



382



393



386



398



380



399



387



New Zealand design

400. Roy Lippincott
Senate desk in solid rimu together with a stool, designed for Auckland University. Ex Auckland University collection
\$1200 – \$1800
401. Roy Lippincott
Senate desk in solid rimu together with a stool, designed for Auckland University. Ex Auckland University collection
\$1200 – \$1800
402. Roy Lippincott
Rare specimen cabinet in solid rimu with eight drawers of graduated size. Designed for Auckland University. Ex Auckland University collection
\$1500 – \$2000
403. Roy Lippincott
Rimu stool designed for Auckland University
\$150 – \$250
404. Roy Lippincott
Museum Display cabinet designed for the McGregor Museum at the Auckland University in rimu with two bays with glazed panelled doors and panelled cupboards to the base
\$2000 – \$4000
405. Edgar Mansfield
Animism
cast bronze figure. H. 120mm
\$400 – \$800
406. Douglas Snelling
Line Armchair, 1946, with original webbing
A similar example illustrated in Kirsty Grant, *Mid Century Modern, Australian Furniture*

Design, National Gallery of Victoria, p. 26-27.
An example also held in the collection of the National Gallery of Victoria, Melbourne. This example sold by Jon Jansen Auckland in 1950s. Original Jon Jansen label to the underside
\$1200 – \$1800

407. Jon Jansen 1950s oak peanut table raise on three triangular legs. 1200 x 1800mm
\$400 – \$600
408. Ces Renwick for Airst
Bahama lounge chair and foot stool made c. 1955
\$600 – \$1000
409. Ces Renwick for Airst
Pair of teak armchairs with black vinyl seats
\$600 – \$800
410. Don furniture recliner and matching ottoman with black vinyl upholstery
\$1200 – \$1800
411. A 1980s New Zealand contemporary armchair with solid rimu back and angular plane seat with ebonised oak arms
\$300 – \$500

402



Modern Design

412. Lino Tagliapietra for Segusso
1960s lunar series glass flask. H.300mm
\$200 – \$400
413. Ettore Sottsass for Memphis
A good mid -1980s Mizar glass vase, multi coloured blown glass. Signed to the base. H.330mm
Ettore Sottsass was a renowned Italian architect and designer and founder of the Memphis group. This iconic Memphis vase features in the book on the Memphis movement, Memphis: Memoire du Style by Fitoussi , P.72
\$5000 – \$8000
414. Ettore Sottsass for Memphis
Uplighter floor lamp H.2000mm
\$2000 – \$4000
415. An important Italian Studio Alchemia pre-Memphis painted wooden folding screen, late 1970s
The Studio Alchemia was composed of designers such as Alessandro Mendiri, Michele De Lucchi and Ettore Sottsass, whose aim was to design and manufacture exhibition pieces, rather than consumer orientated products. Their products were to be regarded as prototypes / one-offs.
This rare painted screen decorated in black and white geometric designs anticipates the work that would be produced in the 1980s by the Memphis group. L.2300 x H.1860mm
\$2000 – \$4000
416. Alvar Aalto for Artek
Circular birch dining table raised on rectangular legs. D.1000mm
\$500 – \$1000
417. German Modernist black and white photo, titled verso 'MK3 Gutersloh Germany'
365 x 280mm
\$30 – \$50
418. Wagner ware modernist aluminium kettle together with a Poole coffee pot
\$30 – \$50
419. Niels Kofoud for Hornslet
Extending teak dining table raised on tapering legs. L. extended 2400mm x W. 1000mm
\$1200 – \$1800
420. Set of six Danish Eva dining chairs by Hornslet
\$1200 – \$1500
421. Walter Knoll
Tub chair with purple wool upholstery raised on tubular aluminium legs
\$300 – \$500
422. Teak mid-century drinks cabinet. W. 920mm
\$200 – \$400
423. Charles and Ray Eames
Pair of management brown hopsack chairs
\$1200 – \$1500

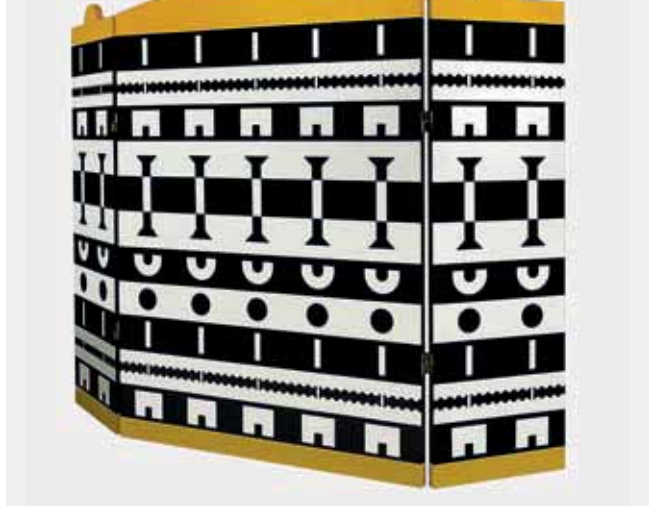
449



414



415



413



449



406



454



424. Charles and Ray Eames for Herman Miller
Circular table with wood veneer top raised on aluminium four point base. Herman Miller label to underside
\$600 – \$1000
425. Charles and Ray Eames for Herman Miller
Moulded fibreglass shell chair on blackened tubular steel legs
\$250 – \$500
426. Charles and Ray Eames for Herman Miller
Vintage lounge chair and ottoman model 670 and 671. Rosewood faced moulded plywood seat shells with black leather upholstery. Herman Miller labels attached to the underside
\$5000 – \$6000
427. Charles and Ray Eames for Herman Miller
Lounge chair and ottoman model 670 and 671. Walnut faced moulded plywood seat shells with custom red leather upholstery. Herman Miller labels attached to the underside and with booklet and certificate of authenticity
\$5000 – \$6000
428. George Mulhauser for Plycraft
Mr Chair and matching ottoman with walnut shell in orange vinyl upholstery. Original Mr Chair labels attached to the base
\$1500 – \$2500
429. Jasper Morrison for Cappellini
Low Pad armchair designed in 1999. Body in bent birch plywood, upholstered with multi-density polyurethane foam. Fixed cover in grey felt. Frame in satin stainless steel, with rubber supports
\$1000 – \$2000
430. Ake Frybitter for Nello (Sweden)
Pair Kroken chairs with brown leather upholstery.
\$1800 – \$2400
431. George Nelson for Vitra
Bench seat 1200 x 470mm
\$500 – \$800
432. Sigurd Resell for Vatne Moblier
Vintage high-back Falcon chair with chocolate tan leather upholstery and matching ottoman
\$800 – \$1200
433. Poul Hundevad
Rosewood sideboard with sliding cupboards. L.1390mm
\$1200 – \$1800
434. Org Mogensen
Pair of oak armchairs with new yellow cloth upholstery
\$600 – \$800
435. Meredew teak sideboard with four drawers, cocktail compartment, with two cupboards and leather handles. W. 2500mm
\$1800 – \$2400
436. Adrian Pearsall for Craft associates
Illuminated world globe in a fitted walnut stand. H.790mm
\$800 – \$1200
437. Vanson mid-century sideboard in rosewood with three drawers and cupboards raised on square section legs
W. 1360 mm
\$1000 – \$1500
438. Robert Heritage for Archie Shine
Teak sideboard of good small proportions with four drawers with reeded facias and two cupboards raised on cylindrical tapering legs
\$2200 – \$2800
439. Gordon Russell walnut coffee table label affixed to the underside. 760 x 380mm
\$200 – \$300
440. Ercol elm winchwood three seater sofa. L. 1790mm
\$1200 – \$1800
441. Pair of Ercol elm winchwood armchairs
\$1200 – \$1500
442. Antonio Citterio for Vitra
Three seater sprung sofa with aluminium frame
\$1500 – \$2000
443. Elliotts of Newbury mahogany dining table. 1080 x 830mm
\$600 – \$800
444. E. Gomme dressing table
\$300 – \$500
445. Peter Hvidt
A large and impressive teak extending dining table. Extended 2350 x 900mm
\$2000 – \$3000
446. Peter Hvidt for France and Son
A large oak veneered drop side dining table. 1620 x 1400mm
\$2500 – \$3500
447. Poul Cadovious
Folding teak drinks trolley
\$400 – \$600
448. Hans Olsen for Frem Rojle
Circular teak dining table with later black vitrolite glass top, complete with four interlocking chairs with black vinyl seats. Manufacturers impressed stamp to the underside of each chair. D.1180mm
\$1000 – \$2000
449. Jielde industrial four arm burnished steel articulated lamp
\$1000 – \$1500
450. Edward Wormley
World globe mounted in a walnut base, c. 1950
\$900 – \$1500
451. Charles and Ray Eames for Herman Miller
Time life stool in walnut, shape B
\$1000 – \$1500
452. Ingo Maurer
Large ceiling hanging 'light bulb' light
\$1000 – \$1500
453. Danish 1950s dark teak tall ice bucket in the form of a Japanese sake keg with original orange liner Early Dansk impressed label
\$300 – \$500
454. Warren Platner
Early rare copper wire high back lounge chair and matching ottoman with original aqua blue coloured wool covers
\$5500 – \$6500
455. A large an impressive Hollywood Regency room divider with four silver leafed wood panels with oval shaped cut outs raised on ball feet. H.2100 x W. 1760mm
\$1800 - \$2400
456. Hans Wegner (attributed)
Three cow horn bar stools with paper cord seats
\$1000 – \$1500
457. 1950s hand painted Stangl wig stand
\$400 – \$600
458. Three rosewood oversized dice
\$100 – \$200
459. Danish hanging triple prong light with three milk glass shades
\$450 – \$600
460. Skipper Mobler green leather arm chair
\$1400 – \$1800
461. Skipper Mobler green leather arm chair
\$1400 – \$1800
462. G-Plan teak room divider with three shelves and sliding cupboards to the base. W. 1200mm
\$800 – \$1200
463. Phillippe Stark
Pair of Costes chairs, after the original chairs designed for the Costes café in Paris
Black lacquered steel frame with curved beech back and black leather seat
\$500 – \$1000
464. Alvino Bigni for Raymour
Sea garden series stoneware vase. H.210mm
\$250 – \$350
465. Italian flask vase hand painted with a flower head. H.230mm
\$40 – \$60
466. Keith Murray for Wedgwood
Moonstone vase. H.180mm
\$200 – \$300
467. Keith Murray for Wedgwood
Moonstone bowl. D. 190mm
\$200 – \$300
468. Two German arts and crafts biscuit barrels and a lidded box
\$50 – \$100
469. German Scheurich stoneware vase decorated in ecru and brown bands. H.380mm
\$50 – \$100

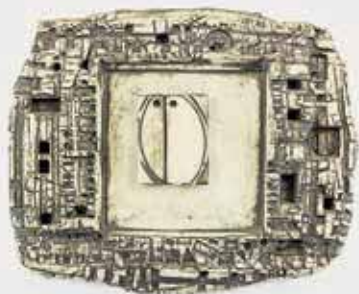


502



470. Poul Henningsen for Louis Poulsen
Vintage PH5 lamp in red
\$600 – \$1000
471. Vicke Lindstrand for Kosta Boda
Glass seaweed vase, signed to the base.
W.130mm H.160mm
\$200 – \$300
472. Art deco table lamp with green glass shade
\$250 – \$350
473. Ki Kristiansen
An unusual leadlight panel with a
contemporary depiction of Adam and Eve and
a Serpent
620 x 440mm
\$300 – \$500
474. A pair of Hagenauer style solid brass cat
bookends
\$200 – \$300
475. Charles and Ray Eames for Herman Miller
Time Life stool in walnut, shape C
\$1000 – \$1500
476. Anston Wilson starburst clock
\$300 – \$500
477. Fredrick Weinberg
1950s horse wall sculpture
\$1000 – \$1500
478. George Nelson
White metal Jax bookends
\$200 – \$400
479. American walnut apple shaped ice bucket
\$175 – \$225
480. George Jensen
Kubus teak mid-century rocking chair with
orange fabric backrest and seat
\$1900 – \$2500
481. A Scandinavian Aarikki carved wood sheep
figure
\$250 – \$250
482. A Scandinavian Aarikki carved wood chicken
figure
\$300 – \$400
483. Curtis Jere for Artisan House
Giant copper grater with turned wood handles
\$750 – \$1000
484. Curtis Jere for Artisan House
Giant stainless steel whisk with turned wood
handles
\$750 – \$1000
485. Curtis Jere for Artisan House
Tree of life metal wall sculpture
\$500 – \$800
486. Curtis Jere for Artisan House
Brutalist birds standing sculpture, the three
burnished brass birds raised on a plinth base.
H.1820mm
\$1000 – \$1500
487. Vintage industrial aluminium Marquee letters –
NZ. H.520mm
\$400 – \$600
488. Giant Ege Rya geometric pattern blue green
and white shag pile floor rug
\$800 – \$1200
489. Verner Panton for Verpan
Spiral chandelier with numerous silver celluloid
spirals suspended on nylon, originally designed
in 1969. Verner Panton label affixed.
\$500 – \$800
490. Pair of pottery table lamps 'his n her', each
modelled as a torso with a tapering conical
shade
\$175 – \$250
491. Danish coffee table with circular glass top and
teak base. D.1060mm
\$900 – \$1200
492. An Italian Vistosi hanging light with five glass
shades
\$400 – \$600
493. A Danish mid-century teak chest of drawers
with four drawers raised on scissor legs
\$900 – \$1200
494. A good rare American 1950s Dazor Enterprise
table lamp, model 1056, brass and anodised
aluminium. Original factory label affixed to
the underside of the shade. *This lamp was the
inspiration for the design of USS Enterprise on
the Stark Trek TV Series*
\$900 – \$1200
495. John Spielman
Carved wood sculpture. H.270mm
\$150 – \$250
496. Arik Levy for Baleri Italia
Folded coffee table with white plastic top with
sloping asymmetrical planes inspired by the art
of origami. 1300 x 700mm
\$500 – \$800
497. Christian Barman for HMV
Chrome bumper electrical fan heater, designed
in 1934
*Christian Barman (1898-1980) was an important
British architect and industrial designer. An
example of one of these heaters is held in the
permanent collection of the Museum of Modern
Art in New York. This design also inspired
the head design of the Daleks on the television
series Dr Who in 1963*
\$300 – \$500
498. Christian Barman for HMV
Chrome bumper electrical fan heater, designed
in 1934
\$300 – \$500
499. An American Denoyer- Geppert science
company anatomical medical model. Circa
1962. H.900mm
\$1500 – \$2000
500. An Italian sommerso glass vase. H.260mm
\$100 – \$200

508



501. An Italian 1960s uplighter floor lamp with four concentric bubble glass shades of graduated size
Re-wired and in working order. H.1730mm
\$800 – \$1200
502. Poul Henningsen for Louis Poulsen
Rare early PH floor lamp, type 28780 with three graduated shades. The top shade retains the original Louis Poulsen label, rewired and in working order. H.1860mm
\$2000 – \$3000
503. A pair of American vintage Barcelona style chairs with brown leather cushions
\$1000 – \$2000
504. Anna Crichton
First Hunt
hand painted charger, signed and dated 2010.
D. 450mm
\$100 – \$200
505. Peter Feuerstein
Three porcelain vases, each with disc top section in the manner of Hans Coper
\$350 – \$500
506. Peter Stichbury
Stoneware crock. H.320mm
\$100 – \$200
507. Len Castle
Rare bottle vase of unusually large size with ash and tenmoku glaze, impressed initials. Small repair evident to the top rim. H. 400 mm
\$1500- \$2000
508. Ted Dutch
Ceramic tile decorated with a Signaller's head in low relief. Signed and dated 1984 verso
150 x 190mm
\$600 – \$800
509. Len Castle
Stoneware dish with jun type glaze over tenmoku. D.190mm
\$100 – \$200
510. Len Castle
Stoneware dish with jun type glaze over tenmoku. D.190mm
\$100 – \$200
511. Japanese Mashiko pottery plate slip decorated with a shrimp. D. 210mm
\$100 – \$200
512. Japanese Mashiko pottery plate slip decorated with a shrimp. 210mm
\$100 – \$200
513. Warren Tippett
Stoneware bowl with tenmoku glaze over ash with wax resist decoration. Chip to inside rim and to base. Cypher mark to base. D. 230mm
\$100 – \$200
514. Warren Tippett
Early and rare 1980's cube form side table constructed from 36 individual hand painted tiles, in black, green and blue. 460 x 460mm
\$1000 – \$2000
515. John Parker
Fine tapering conical agate pottery bowl. Signed to the base. Small rim frit evident
\$400 \$500
516. Elizabeth Lissaman
Wall plate, hand painted with an exotic bird.
D.260mm
\$200 – \$400
517. Graham Ambrose
Circular platter with red glaze. D.290mm
\$150 – \$250
518. Diedre Airey
Two stoneware and terracotta plaques, one depicting a boat at sea, the second with figures in relief in a landscape setting
\$100 – \$200
519. Marilyn Wiseman
Large stoneware bowl with hand painted decoration, some surface crazing evident. 280 x 380mm
\$50 – \$100
520. Andrew van der Putten
Large and impressive stoneware salt glaze jug.
H. 340mm
\$400 – \$800
521. Barry Brickell
Stoneware bowl, repaired firing crack to base.
D. 380 mm
\$100 – \$200
522. Len Castle
Ovoid stoneware vase with barium blue glaze.
H.260mm
\$350 – \$500
523. Robyn Stewart
Dung fired burnished lidded box decorated with kauri trees together with an anchor stone form, together with a dung fired burnished bird, potter unknown
\$100 – \$200
524. Peter Lange
Brick form teapot with sink stopper lid
\$200 – \$300
525. Peter Lange
Terracotta lion red "beer can" mug
\$100 – \$200
526. Mitsuyu Niiyama
Stoneware platter hand painted with fish and another platter painted with toadstools
\$150 – \$300
527. Mitsuyu Niiyama
Large hand painted wall plate together with a wall vase
\$200 – \$300
528. Robyn Stewart
Dung fired burnished vase with an incised koru design. H. 240mm
\$250 – \$400
529. Peter Lange
Two stoneware mugs and a lidded stoneware pot
\$50 – \$100
530. Peter Stichbury
Stoneware teapot with copper red glaze and cane handle together with a shino glazed oil bottle and slat glazed vase
\$150 – \$250
531. Chester Nealie
Wood fired lugged bottle. H.150mm
\$100 – \$200
532. Don Thornley
Lidded stoneware crock with ash glaze, impressed initials to the base. H.320mm
\$60 – \$120
533. Peter Shearer
Porcelain vase of ovoid shape with dubbed green and red glaze together with a lidded French vase
\$30 – \$50
534. Peter Lange
Three porcelain dishes of square form with textured surface decoration. Each 320 x 320mm
\$100 – \$200
535. John Parry
Pair of lamp base together with an ovoid stoneware bottle with cork stopper
\$100 – \$200
536. Peter Stichbury
Stoneware oil bottle and salt pig with wax resist decoration
\$100 – \$200
537. Len Castle
Stoneware bowl with oatmeal glaze. D.170mm
\$50 – \$100
538. Len Castle
Porcelain bowl with alkaline blue glaze
\$100 – \$200
539. Graham Ambrose
Muriwai Ark. L.800mm
\$1500 – \$2000
540. Graham Ambrose
Large and impressive red glazed orb vase. D.410mm
\$1500 – \$2000
541. Graham Ambrose
Pyrite form. W.420mm H.500mm
\$1500 – \$2000
542. Ian Firth
Stoneware teapot with bamboo handle
\$50 – \$100

New Zealand studio pottery and other studio pottery



543. Len Castle
Large porcelain platter with blue glaze.
D.520mm
\$1000 – \$2000
544. Ian Smail
Stoneware Jug H. 230mm and a lidded wood fired jar H. 190mm
\$100 – \$200
545. Peter Lange
Brick form teapot together with a small jug.
\$200 – \$400
546. Marilyn Wiseman
Stoneware bowl together with a Scott Hockenull cube with insect modelled in relief [faulted]
\$30 – \$50
547. Hillside Pottery salt glaze lidded jar. H. 150mm
\$50 – \$100
548. Estelle Martin
Anagama fired vase of ovoid shape. H. 280mm
\$100 – \$200
549. Ross Mitchell-Anyon
Stoneware coffee pot.
\$40 – \$80
550. Peter Gibbs (Brightwater Pottery)
Stoneware lidded kitchen jar. H. 340mm.
Together with a Steve Fullmer stoneware vase, H. 300mm
\$30 – \$50
551. Len Castle
Stoneware bowl with pale blue jun type glaze to the interior and tenmoku glaze to the exterior. D.250mm
\$100 – \$200
552. Len Castle
A good stoneware bowl with blue jun type glaze to the well over a dark tenmoku ground. D.340mm
An almost identical example illustrated in Len Castle Potter, Ron Sang and Len Castle 2002. P. 123
\$500 – \$800
553. Len Castle
Crater lake/alkaline pool bowl with sculptured cavetto rim with blue alkaline glaze to the well and with dark stained exterior. Impressed initials to the base. D.480mm
\$2000 – \$3000
554. Len Castle stoneware bowl with shino glaze. D.320mm
\$200 – \$300
555. Len Castle
Stoneware vase of bottle shape with pinched sides and blue/green glaze. Impressed initials to the base and incised date 2000. H.330mm
\$600 – \$800
556. Len Castle
Stoneware vase of bottle shape with green glaze and textured surface. Incised initials to the base H.320mm
\$600 – \$800
557. Len Castle
Small ovoid vase. H.100mm
Provenance: Collection of Neil and Fay Castle
\$50 – \$100
558. Len Castle
Early salt glazed bowl. Fired at Crumb Brick works c. 1952. Impressed mark to the base. Chipped to the rim. D.240mm
Provenance: Collection of Neil and Fay Castle
\$200 – \$400
559. Len Castle
Early ash glazed bowl. D.160mm
Provenance: Collection of Neil and Fay Castle
\$150 – \$250
560. Len Castle
Early pin dish decorated with a fossil form. D.90mm
Provenance: Collection of Neil and Fay Castle
\$200 – \$400
561. Len Castle
Early terracotta bowl. D.220mm
Provenance: Collection of Neil and Fay Castle
\$100 – \$200
562. Barry Brickell
Large salt glazed bread crock. Impressed potters cypher to the lid. H.410mm
\$500 – \$1000
563. Warren Tippet
Ovoid vase with ash glaze. H.160mm
\$30 – \$50
564. Peter Shearer
Ovoid stoneware vase with textured blue glaze. H.290mm
\$40 – \$80
565. Rick Rudd
Bottle, 1989
Pinched and coiled, raku fired with white crackle glaze to the interior. H.357 x 250 x 235mm
Exhibited: Rick Rudd *True to Form*, Sarjeant Gallery, 1996. Illustrated on page 16 of the catalogue. This important bottle was one of very few made by Rick Rudd.
\$500 – \$1000
566. H.D. Whitcombe
Early New Zealand pottery bowl. D. 120mm
\$100 – \$200
567. Len Castle
Earth book, impressed initials. W. 150mm
\$400 – \$600
568. Len Castle
A rare black stained earth book. W. 130mm
\$400 – \$600
569. Len Castle
Shino glazed tea bowl from the last Warkworth firing. D. 140mm
\$200 – \$300
570. Len Castle
Stoneware tea bowl, shino glaze, with stamped impression, from the last Warkworth firing. D. 110mm
\$200 – \$300
571. Len Castle
Stoneware shino glazed tea bowl from the last Warkworth firing. D. 110mm
\$200 – \$300
572. Len Castle
Stoneware tea bowl, unglazed exterior, from the last Warkworth firing. D. 120mm
\$200 – \$300



573. Len Castle
A good stoneware shino glazed bowl. This bowl is the last shino glazed piece that Len castle fired at Warkworth. D. 300mm
\$700 – \$800
574. Len Castle
Stoneware shino glazed bowl, c. 1970s. D. 260mm
\$500 – \$800
575. Len Castle
Stoneware lidded jar, shino glaze, c. 1970s. H. 160mm
\$400 – \$600
576. Len Castle
Stoneware water jug with blue glaze. H. 230mm
\$400 – \$600
577. Kelvin Bradford
Stoneware vase. H. 220mm
\$200 – \$300
578. Kelvin Bradford
Shino glazed pourer. D. 150mm
\$100 – \$200
579. Kelvin Bradford
A large and impressive stoneware bowl with poured jun glaze. D. 490mm
\$500 – \$700
580. Len Castle
Stoneware dish, c. 1970s. W. 290mm
\$250 – \$350
581. Len Castle
Stoneware bowl. D. 140mm
\$100 – \$200
582. Joel Shapiro (American)
Stoneware shino glazed tea bowl. Ex. Collection of Len Castle. D. 100mm
\$300 – \$500
583. Paul Mason
Green patinated bronze vessel with gilded interior. D. 100mm
\$600 – \$800
584. Don Thornley
Stoneware bowl, ash glaze. D. 260mm
\$50 – \$80
585. Steve Fullmer
Reef head, ceramic sculpture, signed. H. 320mm
\$150 – \$250
586. Rick Rudd
Raku fired teapot of stylised bird form with a large bronze glazed cross-shaped knob. W. 230mm
\$250 – \$350
587. Manos Nathan
Ipu Mania Parirau (Blue), raku fired vase with koru shaped handles, signed. H. 490mm
\$1000 – \$1500
588. Warren Tippett
Ovoid vase, earthenware, combed to the surface and with hand painted geometric decoration in yellow, red, blue and purple. H. 240mm
\$100 – \$200
589. Rosemary Brittan (McClay)
Earthenware plant form with cicada modelled in high relief. H. 280mm
\$40 – \$80
590. Scott Hockenull
Stoneware bowl textured exterior the interior painted with a palm tree. L. 490mm
\$100 – \$200
591. Sandra Black (Australia)
Slip cast urn form with Grecian drapery style decoration. H. 640mm
Sandra Black is one of Australia's foremost ceramic artists. On a number of occasions her work featured in the New Zealand Fletcher Challenge Ceramic awards. In 1988 she won the award and in 1989 a merit award
\$300 – \$400
592. Barry Ball
Stoneware vase together with a Barry Ball stoneware bowl
\$50 – \$100
593. Matius Cuch
Floor vase and seven miniature vases
\$50 – \$100
594. Wailin Elliot
Pair of terracotta Angel figures, H. 75mm; and two other figures
\$30 – \$50
595. Lex Dawson
Three stoneware bowls of graduated size
\$50 – \$100
596. Large stoneware pottery bowl. D. 320mm
\$30 – \$50
597. Salt glazed stoneware jug. H. 220mm
\$30 – \$50
598. Assorted pottery pieces including a two vases by Tony Bacon, a John Dawson tea bowl, a lidded Tilley bowl
\$40 – \$80

Toys

599. 3 Japanese mechanical tinplate toys inc. Happy Time Pussy, Happy Hippo & Candy Loving Canine in original carded boxes
\$100 – \$150
600. 3 Japanese mechanical tinplate toys inc. Monkey Basketball Player, Racing Trotter & Happy Skater in original fair condition boxes
\$80 – \$120
601. 5 Japanese mechanical tinplate circus toys inc. Circus Car, Circus Parade, Clown Bicycle, Clown balancing monkey & Skip Rope animals in original fair boxes
\$100 – \$150
602. 7 Japanese mechanical animal toys inc. Crawling Baby, Begging Dog, Reading Bear, Fishing Bear and others, some in fair original boxes (7 in total)
\$100 – \$150
603. 2 Japanese Alps Brand mechanical toys inc. Strutting Duck and Juggling Monkey in original carded boxes
\$100 – \$200
604. Milky way tin plate boat and another tin plate toy
\$30 – \$50

Absentee bid form

Auction No. 89

New Collectors Art
17 February 2015
(lots 1–192)

Decorative Arts
18 February 2015
(lots 200–604)

This completed and signed form authorizes ART+OBJECT to bid on my behalf at the above mentioned auction for the following lots up to prices indicated below. These bids are to be executed at the lowest price levels possible.

I understand that if successful I will purchase the lot or lots at or below the prices listed on this form and the listed buyers premium for this sale (17.5%) and GST on the buyers premium. I warrant also that I have read and understood and agree to comply with the conditions of sale as printed in the catalogue.

Lot no.	Description	Auction Date	Bid maximum (New Zealand dollars)
_____	_____	_____	_____
_____	_____	_____	_____
_____	_____	_____	_____
_____	_____	_____	_____
_____	_____	_____	_____
_____	_____	_____	_____
_____	_____	_____	_____
_____	_____	_____	_____
_____	_____	_____	_____
_____	_____	_____	_____
_____	_____	_____	_____
_____	_____	_____	_____
_____	_____	_____	_____
_____	_____	_____	_____
_____	_____	_____	_____

Payment and Delivery ART+OBJECT will advise me as soon as is practical that I am the successful bidder of the lot or lots described above. I agree to pay immediately on receipt of this advice. Payment will be by cash, cheque or bank transfer. I understand that cheques will need to be cleared before goods can be uplifted or dispatched. I will arrange for collection or dispatch of my purchases. If ART+OBJECT is instructed by me to arrange for packing and dispatch of goods I agree to pay any costs incurred by ART+OBJECT. Note: ART+OBJECT requests that these arrangements are made prior to the auction date to ensure prompt delivery processing.

Please indicate as appropriate by ticking the box:

PHONE BID

ABSENTEE BID

MR/MRS/MS: _____

SURNAME: _____

POSTAL ADDRESS: _____

STREET ADDRESS: _____

BUSINESS PHONE: _____

MOBILE: _____

FAX: _____

EMAIL: _____

Signed as agreed: _____

To register for Absentee bidding **this form must be lodged with ART+OBJECT by 2pm** on the day of the published sale time in one of three ways:

1. Fax this completed form to ART+OBJECT +64 9 354 4645
2. Email a printed, signed and scanned form to: info@artandobject.co.nz
3. Post to ART+OBJECT, PO Box 68 – 345 Newton, Auckland 1145, New Zealand

Conditions of sale

Please note: it is assumed that all bidders at auction have read and agreed to the conditions described on this page. ART+OBJECT directors are available during the auction viewing to clarify any questions you may have.

1.
Registration: Only registered bidders may bid at auction. You are required to complete a bidding card or absentee bidding form prior to the auction giving your correct name, address and telephone contact + supplementary information such as email addresses that you may wish to supply to ART+OBJECT
2.
Bidding: The highest bidder will be the purchaser subject to the auctioneer accepting the winning bid and any vendor's reserve having been reached. The auctioneer has the right to refuse any bid. If this takes place or in the event of a dispute the auctioneer may call for bids at the previous lowest bid and proceed from this point. Bids advance at sums decreed by the auctioneer unless signaled otherwise by the auctioneer. No bids may be retracted. The auctioneer retains the right to bid on behalf of the vendor up to the reserve figure.
3.
Reserve: Lots are offered and sold subject to the vendor's reserve price being met.
4.
Lots offered and sold as described and viewed: ART+OBJECT makes all attempts to accurately describe and catalogue lots offered for sale. Notwithstanding this neither the vendor nor ART+OBJECT accepts any liability for errors of description or faults and imperfections whether described in writing or verbally. This applies to questions of authenticity and quality of the item. Buyers are deemed to have inspected the item thoroughly and proceed on their own judgment. The act of bidding is agreed by the buyer to be an indication that they are satisfied on all counts regarding condition and authenticity.
5.
Buyers premium: The purchaser by bidding acknowledges their acceptance of a buyers premium of 17.5% + GST on the premium to be added to the hammer price in the event of a successful sale at auction.
6.
ART+OBJECT is an agent for a vendor: A+O has the right to conduct the sale of an item on behalf of a vendor. This may include withdrawing an item from sale for any reason.
7.
Payment: Successful bidders are required to make full payment immediately post sale – being either the day of the sale or the following day. If for any reason payment is delayed then a 20% deposit is required immediately and the balance to 100% required within 3 working days of the sale date. Payment can be made by Eftpos, bank cheque or cash. Cheques must be cleared before items are available for collection. Credit cards are not accepted.
8.
Failure to make payment: If a purchaser fails to make payment as outlined in point 7 above ART+OBJECT may without any advice to the purchaser exercise its right to: a) rescind or stop the sale, b) re offer the lot for sale to an underbidder or at auction. ART+OBJECT reserves the right to pursue the purchaser for any difference in sale proceeds if this course of action is chosen, c) to pursue legal remedy for breach of contract.
9.
Collection of goods: Purchased items are to be removed from ART+OBJECT premises immediately after payment or clearance of cheques. Absentee bidders must make provision for the uplifting of purchased items (see instructions on the facing page)

10.
Bidders obligations: The act of bidding means all bidders acknowledge that they are personally responsible for payment if they are the successful bidder. This includes all registered absentee or telephone bidders. Bidders acting as an agent for a third party must obtain written authority from ART+OBJECT and provide written instructions from any represented party and their express commitment to pay all funds relating to a successful bid by their nominated agent.
11.
Bids under reserve & highest subject bids: When the highest bid is below the vendor's reserve this work may be announced by the auctioneer as sold 'subject to vendor's authority' or some similar phrase. The effect of this announcement is to signify that the highest bidder will be the purchaser at the bid price if the vendor accepts this price. If this highest bid is accepted then the purchaser has entered a contract to purchase the item at the bid price plus any relevant buyers premium.

Important advice for buyers

The following information does not form part of the conditions of sale, however buyers, particularly first time bidders are recommended to read these notes.

- A.
Bidding at auction: Please ensure your instructions to the auctioneer are clear and easily understood. It is well to understand that during a busy sale with multiple bidders the auctioneer may not be able to see all bids at all times. It is recommended that you raise your bidding number clearly and without hesitation. If your bid is made in error or you have misunderstood the bidding level please advise the auctioneer immediately of your error – prior to the hammer falling. Please note that if you have made a bid and the hammer has fallen and you are the highest bidder you have entered a binding contract to purchase an item at the bid price. New bidders in particular are advised to make themselves known to the sale auctioneer who will assist you with any questions about the conduct of the auction.
- B.
Absentee bidding: ART+OBJECT welcomes absentee bids once the necessary authority has been completed and lodged with ART+OBJECT. A+O will do all it can to ensure bids are lodged on your behalf but accepts no liability for failure to carry out these bids. See the Absentee bidding form in this catalogue for information on lodging absentee bids. These are accepted up to 2 hours prior to the published auction commencement.
- C.
Telephone bids: The same conditions apply to telephone bids. It is highly preferable to bid over a landline as the vagaries of cellphone connections may result in disappointment. You will be telephoned prior to your indicated lot arising in the catalogue order. If the phone is engaged or connection impossible the sale will proceed without your bidding. At times during an auction the bidding can be frenetic so you need to be sure you give clear instructions to the person executing your bids. The auctioneer will endeavour to cater to the requirements of phone bidders but cannot wait for a phone bid so your prompt participation is requested.
- D.
New Zealand dollars: All estimates in this catalogue are in New Zealand dollars. The amount to be paid by successful bidders on the payment date is the New Zealand dollar amount stated on the purchaser invoice. Exchange rate variations are at the risk of the purchaser.

ARTIST'S INDEX

CATALOGUE 89
NEW COLLECTORS

17 FEBRUARY 2015

- Aberhart, Laurence 189
Albrecht, Gretchen 16, 75, 81, 86,
99, 111, 116, 117, 162
Alvarex, Alberto Garcia 190
Armstrong, Eve 9
Ayrton, Michael 87
Barber, Kathy 181
Baudrillard, Jean 135
Binney, Don 79, 146, 176
Blair, Philippa 119
Blomfield, Charles 120
Brown, Nigel 114
Bruce, Linda 129
Buchanan, Dean 140
Chen, Sean 160, 183
Ching, Raymond 121, 187, 188
Cleavin, Barry 184, 185, 186
Cleverley, Peter 6
Cotton, Shane 105, 107
Cousins, James 42
Dali, Salvador 67, 68, 69
Dawson, Neil 174
de lautour, Tony 154
Duff, Alison 131
Edgar, John 130
Ingram, Simon 2
Ivanoff, Noel 18, 47
Fairskye, Marilyn 115
Feu'u, Fatu 50
Fletcher, Graham 3
Fomison, Tony 57, 58
Fong, Luise 89
France, Patricia 33, 34, 35, 36, 37,
38, 39
Frizzell, Dick 59, 94, 110, 150
Fumpston, Rodney 161
Gimblett, Max 41, 192
Green, Murray 112
Gossage, Star 78
Grace, Shirley 136, 137
Hammond, Bill 61, 62, 103, 104
Hanly, Pat 56, 108
Harper, Melinda 25
Harris, Jeffrey 27, 31, 82, 101, 141,
149, 159
Heaphy, Chris 179
Hight, Michael 151
Hinton, Bineta 168
Hotere, Ralph 49, 70, 72, 84, 90,
106, 118, 144, 145, 173
Hughes, Sara 10
Kahukiwa, Robyn 55
Killeen, Richard 1, 48, 73, 80, 113
King, Marcus 177
Laita, Lily 53
Lane, Tony 40
Law, Dorothy 32
Lee, Jae Hoon 21
McCahon, Colin 88, 171
McIntyre, Mary 100, 133
McIntyre, Simon 5, 52
McLeod, Andrew 46
McLeod, Euan 170
McLeod, Robert 180
Maddox, Allen 17, 178
Martin, Leigh 4
Miller, Peter 91
Mitchell, Dane 20, 22
Moffitt, Trevor 109
Morris, Simon 11
Mortimer, Roger 143
Ngan, Guy 63, 64, 65, 66
Nielsen, Valerie 147, 148
Organ, Jonathan 155
Palmer, Stanley 85
Reynolds, John 28, 29, 44, 45
Reynolds, Patrick 191
Rhodes, Margaret 158
Riethmaier, Anne 95
Ritchie, Ross 54
Robinson, Ann 134
Ross, James 43
Ryde, Alison 163
Schoon, Theo 122, 123, 124, 125
Scott, Ian 165
Siddell, Peter 7
Smith, Peter James 83, 93
Smither, Michael 98, 164
Stichbury, Peter 8
Stringer, Terry 127, 128
Sydney, Graham 71
Taylor, Alan 166, 167
Te Ratana, Saffronn 24, 26
Te Waru Rewiri, Kura 30
Thomson, Elizabeth 150
Thomson, Jeff 132
Thompson, Richard 153
Tillers, Imants 23
Trusttun, Philip 77
Tune, Geoffrey 74
Turner, Denis Knight 126
van Hout, Ronnie 138, 139
Walsh, John 60
Walters, Gordon 97
Warhol, Andy 12, 13, 14, 15
Webb, Marilyn 96
White, Robin 142, 156, 175
Weeks, John 51, 157
White, Robin 76, 175, 182
Winstone, Lauren 102
Woollaston, Toss 172
Wooller, Mark 92
Workman, Dion 19





New Collectors Art

Tuesday 17 February

Decorative Arts

Wednesday 18 February