

Art +  
Object



Cover: Lot 29, Fiona Pardington, Portrait of a Female Huia

Below: Lot 268, John Crichton, mosaic wall charger (detail)





## New Collectors Art

Tuesday 8 December at 6.30pm

## Decorative Arts

Wednesday 9 December at 6.30pm

THE SIMON  
MANCHESTER  
COLLECTION  
OF  
LEN CASTLE  
CERAMICS  
February 2016



Simon Manchester with a selection of Len Castle hanging forms which will feature in the catalogue of his collection

# The archive of Professor Emeritus Michael Dunn

February 2016

Michael Dunn is one of New Zealand's most distinguished art historians, having taught at The University of Auckland for over twenty five years as head of the Art History department before being appointed Chair of Elam School of Fine Arts in 1994. He is the author of over 20 major publications including *New Zealand Painting, a Concise History* (2006) and *New Zealand Sculpture: A History* (2002). His research as well as publications and articles on leading New Zealand Modernist artists afforded him unique access to many of the key figures in New Zealand art history of the 20th century.

Professor Dunn's archive collection reflects the scope of his interests and relationships and includes documents, rare photographs and artworks that inform a lifetime as a central figure in the conceptual thinking that has driven the visual arts discourse within New Zealand over the last fifty years.



Theo Schoon  
*Portrait of Gordon Walters*  
silver gelatin print  
210 x 160mm  
\$1000 – \$1500  
Contact  
Hamish Coney  
021 509 550  
[hamish@artandobject.co.nz](mailto:hamish@artandobject.co.nz)



**Michael Parekowhai**  
*The Bosom of Abraham*  
screenprint on fluorescent  
lighousing  
\$10 595



**Trevor Moffitt**  
*April 1938: Oliver threatened by Graham*  
oil on hardboard, 1987  
\$11 410



**Don Binney**  
*Kaiarara Kaka, Great Barrier*  
silkscreen print, 22/150, 1982  
\$6605



**Gordon Walters**  
*Kura*  
silkscreen print 115/150, 1982  
\$7745



**Barbara Hepworth**  
*Rangatira I from Opposing Forms*  
lithograph, 1/12, 1970  
\$4500



**Colin McCahon**  
*Puketutu, Manukau*  
Three lithographs and cover  
sheet, edition of 100, 1957  
\$8705



**Marti Friedlander**  
*Ralph Hotere and Black Phoenix*  
type C print  
\$3720



**Michael Parekowhai**  
*Elmer Keith from the Beverley Hills Gun Club*  
type C print, edition of 10  
\$9125



**Garth Tapper**  
*The Owner*  
oil on canvasboard  
\$12 010

# DECORATIVE ARTS

September 2nd



**A.R.D. Fairburn**  
Handstamped curtain with Maori  
rock art designs after Theo Schoon  
\$8405



**Len Castle**  
Sulphurous bowl  
D.440mm  
\$6605



**Joe Colombo**  
Elda chair in brown leather with  
fibreglass shell, designed in 1983  
\$6605



**H.W. Klein for Bramin, Denmark**  
Reclining armchair and ottoman  
\$5045



**Frank Carpay for Crown Lynn**  
Handpainted vase, painted in red,  
black, yellow and green with a  
unique dove design  
\$3960

**NEW ZEALAND**



**QANTAS AND TEAL**

IN ASSOCIATION WITH B.O.A.C.



# Decorative Arts

## **Auction**

Wednesday 9 December at 6.30pm  
3 Abbey Street, Newton, Auckland

## **Viewing**

Friday 4 December, 9.00am – 5.00pm

Saturday 5 December, 11.00am – 4.00pm

Sunday 6 December, 11.00am – 4.00pm

Monday 7 December, 9.00am – 5.00pm

Tuesday 8 December, 9.00am – 1.00pm

Wednesday 9 December, 9.00am – 1.00pm

Lot 365  
Qantas and Teal 1956 Maori Travel  
poster designed by Harry Rogers.  
490 x 360mm  
\$1000 – \$1500

All lots illustrated at  
[www.artandobject.co.nz](http://www.artandobject.co.nz)

# Modern Design and New Zealand Studio Pottery

- 220 Len Castle  
Stoneware bowl, with ash and complex copper glaze to the well, tenmoku to the exterior, impressed initials. 360mm  
\$250 – \$400
- 221 Christine Thacker  
Large porcelain jug decorated to the sides with medallions, signed and inscribed 'Waiheke Island 2007'. H. 385mm  
\$200 – \$300
- 222 Mirek Smisek  
Ovoid vase with salt glaze, incised signature to the base. H. 130mm  
\$100 – \$200
- 223 Len Castle  
Large stoneware platter with brushed decoration, jun glaze over tenmoku, impressed initials. W. 440mm  
\$400 – \$800
- 224 Keith Blight  
Stoneware hanging wall discs, with various glazes  
\$100 – \$200
- 225 Brian Gartside  
Stoneware circular platter with abstract decoration. D. 390mm  
\$100 – \$200
- 226 Len Castle  
Large stoneware brushpot with textured surface and ash glaze, impressed initials. H. 325mm  
\$250 – \$400
- 227 Len Castle  
Small stoneware brushpot with textured surface and ash glaze, impressed initials. H. 175mm  
\$100 – \$200
- 228 Len Castle  
Stoneware vase with double aperture, the textured surface with umber pigment & alkaline blue glaze to the interior, impressed initials. H. 175mm  
\$700 – \$1100
- 229 Len Castle  
Stoneware globular vase with textured umber pigmented surface, impressed initials. H. 180mm  
\$100 – \$200
- 230 Len Castle  
Stoneware lidded casserole dish with ash glaze, impressed initials. W. 300mm  
\$100 – \$200
- 231 Len Castle  
Press moulded discoid vase with burnt umber pigmented surface, impressed mark. H. 350mm  
\$600 – \$800

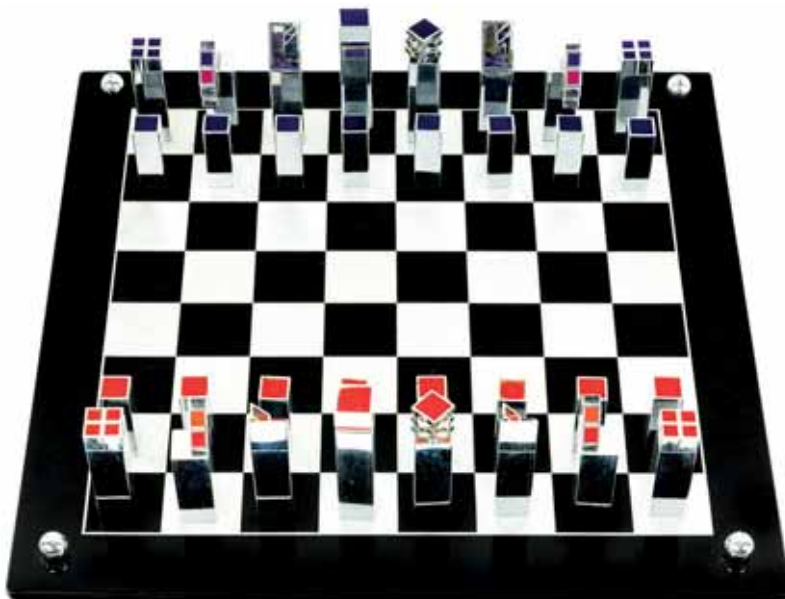


226 / 227

- 232 Warren Tippett  
Stone ware wine jar, ash glazed. H.280mm  
\$150 – \$250
- 233 Greg Barron  
Large stoneware pear shaped vase with green glaze, impressed mark, together with a smaller vase (potter unknown). H. 345mm max  
\$150 – \$250
- 234 Greg Barron  
Stoneware wood fired hexagonal vase, unmarked. H. 235mm  
\$150 – \$250
- 235 Greg Barron  
Large stoneware salt glazed jug with incised decoration, impressed marks. H. 320mm  
\$200 – \$300
- 236 Greg Barron  
Large green glazed porcelain lidded floor jar, with ribbed body, impressed marks. H. 660mm  
\$400 – \$600
- 237 Len Castle  
Large stoneware hanging form, with textured umber pigmented surface, incised with a
- waving pattern & alkaline blue glaze to interior, impressed initials. H. 280mm  
\$400 – \$800
- 238 Len Castle  
Porcelain plate with alkaline blue crackled glaze, impressed initials. D. 215mm  
\$100 – \$200
- 239 Len Castle  
Stoneware jug with grey ash glaze over tenmoku, impressed initials. H. 135mm  
\$100 – \$200
- 240 Large Danish Kastrup- Holmegaard gul vase red cased milk glass original. H.520mm  
\$400 – \$600
- 241 Vicke Lindstrand for Kosta Boda glass bowl, with dotted blue decoration, signed and numbered. D. 170mm  
\$30 – \$50
- 242 Lino Tagliapietra for Segusso  
1960s lunar series glass flask. H.300mm  
\$50 – \$100



- 243 Ernest Shufflebotham for Crown Lynn  
Hand potted vase, shape 14. H. 130mm  
\$150 – \$250
- 244 A collection of six Poole pottery items,  
comprising three bowls and three small vases  
(some damage)  
\$100 – \$200
- 245 A group of four Poole pottery items,  
comprising two globular vases, a planter and a  
footed bowl, together with a New Zealand Art  
Glass vase  
\$100 – \$200
- 246 A collection of nineteen German pottery  
planters (some damage)  
\$100 – \$200
- 247 Two small Poole pottery vases, both marked  
\$50 – \$100
- 248 Three Poole pottery platters with colourful  
geometric designs. D. 360mm max  
\$150 – \$300
- 249 Don Thornley  
Large shino glaze stoneware vase, impressed  
mark. H. 350mm  
\$100 – \$200
- 250 Geoff Mincham [Australian]  
Large earthenware vase with gestural  
decoration. H. 450mm  
\$150 – \$300
- 251 Geoff Mincham  
Earthenware dish of elliptical shape with  
sgraffito cut banding, signed and dated '02,  
L. 560mm; together with a Scott Hockenull  
stoneware bowl painted with a palm tree,  
L. 490mm  
\$200 – \$300
- 252 Sandra Black (Australia)  
Slip cast urn form with Grecian drapery style  
decoration. H. 640mm  
*Sandra Black is one of Australia's foremost  
ceramic artists. On a number of occasions her  
work featured in the New Zealand Fletcher  
Challenge Ceramic awards. In 1988 she won the  
award and in 1989 a merit award*  
\$200 – \$300
- 253 Timo Sarpaneva  
Clear glass vase decorated with internal  
'bubbles', signed and inscribed s/7/1995' (tiny  
chips to top rim). H. 165mm  
\$80 – \$120
- 254 Gary Nash  
Handblown green glass vase, signed and dated  
95.H. 195  
\$50 – \$80
- 255 Le Corbusier, Pierre Jeanneret and Charlotte  
Perriand  
LC4 chaise longue with polished trivalent  
chrome plated steel frame and black leather  
upholstery and head rest:
- Provenance: This example was purchased from  
the Conrad store in London  
\$600 – \$800
- 256 David Trubridge  
Raft small prototype model in ash, 2001  
\$2000 – \$3000
- 257 David Trubridge  
Early Sling raft. Resolved, abstracted 'hammock  
like' form that is both furniture and sculpture.  
This early example made in steam bent elm.  
\$2000 – \$3000
- 258 Martin Poppelwell  
Smaller unglazed waisted earthenware vase,  
painted with a deconstructed grid on a white  
ground with a cross in relief, signed 'M.  
Poppelwell 2004'. H. 395mm  
\$800 – \$1200
- 259 Martin Poppelwell  
Large waisted earthenware vase, painted with  
a deconstructed grid on a white ground, with  
crackled glazed, inscribed 'GRIDWORK', signed  
with artist's mark and dated MMIV (2004).  
H. 440mm  
\$800 – \$1200
- 260 Maurice Burke  
Vintage 1960s Arkana Tulip dining table.  
D.1520mm  
\$400 – \$600
- 261 Marcel Breuer  
Set of four teak and aluminium outdoor chairs  
\$500 – \$800
- 262 Piero Lissoni for Cassina  
Black leather three seater sofa  
\$1400 – \$1800
- 263 Piero Lissoni for Cassina  
Black leather three seater sofa  
\$1400 – \$1800
- 264 Alvar Aalto armchair with zebra stripe  
upholstery  
\$800 – \$1200
- 265 Alvar Aalto daybed with zebra stripe upholstery  
\$600 – \$800
- 266 Torkel Hansen  
Hot tin copper vessel (1998). H. 940mm  
\$400 – \$600
- 267 John Crichton  
Large tiled mosaic wall charger, decorated with  
radiating mosaic pattern in yellow, green, blue,  
white and aqua coloured tiles. Traces of original  
label to base. D. 400mm  
\$1500 – \$2500
- 268 John Crichton  
Rare large asymmetrical mosaic wall charger,  
decorated with aqua, blue, green, white, black,  
yellow and brown tiles. D. 400mm  
\$2000 – \$3000
- 269 Italian Riedel Mesa black frosted glass vase,  
with a silver band to the centre, marked.  
H. 165mm  
\$300 – \$500



- 270 John Middleditch  
Three Trumpeters, patinated and brazed copper sculpture, the figures raised on a rectangular copper base. W.220mm  
\$800 – \$1200
- 271 Square cream wrapped games table in the manner of Karl Springer. 740mm x 1010mm  
\$100 – \$200

- 272 A French 1950s ceiling lamp with two raffia pendant shades  
\$300 – \$400
- 273 Jose Bribiesca  
Rare chess set with 32 pieces in chromed steel with coloured and inset Perspex on glass chess board. Individual pieces of variable dimensions. Chessboard measures 405 x 405mm  
\$1800 – \$2200

- 274 Keith Murray for Wedgwood  
Shoulder vase (shape 3805) in moonstone glaze. Keith Murray signature and Wedgwood factory marks to the base. H.280mm  
\$1200 – \$1800
- 275 Keith Murray for Wedgwood  
Shoulder vase (shape 3805) in matt green glaze. Keith Murray signature and Wedgwood factory marks to the base. H.280mm  
\$1200 – \$1800
- 276 Keith Murray for Wedgwood  
Squat ovoid vase with lathe turned bands to the shoulder (shape 3820) in matt green glaze. Keith Murray signature and Wedgwood factory marks to the base. H.180mm W.290mm  
\$1600 – \$2000
- 277 Keith Murray for Wedgwood  
Spherical vase (shape 3801) with lathe turned bands. Matt green glaze. Keith Murray signature and Wedgwood factory marks to the base. H.160mm  
\$600 – \$800
- 278 Keith Murray for Wedgwood  
Spherical vase (shape 3675) with lathe turned bands in matt straw glaze. KM printed mark to the base. H.180mm  
\$500 – \$800
- 279 Keith Murray for Wedgwood  
Tapering cylindrical vase (shape 4315) with lathe turned bands in matt straw glaze. KM printed mark to the base. H.180mm  
\$400 – \$600
- 280 Keith Murray for Wedgwood  
A pair of small goblets, matt green glaze  
\$200 – \$300



- 281 Keith Murray for Wedgwood tapering cylindrical vase (shape 3842) with lathe turned bands in moonstone. H.230mm  
\$500 – \$800
- 282 Marc Newson for Cappellini  
Wood chair 1988 constructed from beech hardwood  
\$3000 – \$4000
- 283 Achille Castiglioni and Pier Giacoma for Flos lighting  
Arco floor lamp issuing from a white Carrara marble base  
\$2000 – \$3000
- 284 Gunni Oman for Oman Jun  
Rosewood high back sideboard model №19, circa 1964 with four sliding cupboards with drawers to the base W.2000mm x D.450mm  
\$1500 – \$2000
- 285 Pair of Danish mid-century three pronged lamps with cylindrical shades  
\$600 – \$800
- 286 John Crichton  
Circular dish decorated with a radiating pattern of white blue and green tiles. Remains of original sticker to the back. D.280mm  
\$400 – \$500
- 287 Hans Wegner for Getama  
Vintage model GE 290 oak plank chair with black and grey striped wool upholstery  
Impressed marks to the underside  
\$1000 – \$2000
- 288 Danish teak 1950s extension dining table with thumb moulded edge raised on tapering legs. Length extended 1800mm  
\$800 – \$1200





- 288a Set of four teak Danish dining chairs with black leatherette seats  
\$600 – \$1000
- 289 Heritage 1960s mahogany wall with three shelves to the upper section and sliding cupboards to the base. W.950mm H.2000mm  
\$600 – \$800
- 290 1950s Backhouse floor lamp raised on a teak base on four splayed legs. H.1600mm  
\$400 – \$600
- 291 A good pair of 1950s Butterfly chairs and matching footstool with brown patinated leather covers  
\$1200 – \$1800

- 292 A pair of Vintage Barcelona chairs with matching Barcelona coffee table with glass top  
\$4000 – \$5000
- 293 1970s armchair and footstool with black vinyl upholstery  
\$200 – \$300
- 294 A large contemporary coffee table with glass top raised on scrolling aluminium legs. 1500 x 500  
\$400 – \$600
- 295 Rectangular teak coffee table with cane shelf raised on tapering legs. W.1580mm  
\$100 – \$200
- 296 Kate Wells tapestry depicting a Pukeko in a landscape. 800 x 580mm  
\$100 – \$200
- 297 Nigel Coates  
Hand blown orange glass vase. Signed and dated 98. H.360mm  
\$100 – \$200
- 298 Gary Nash  
Yellow glass dish with a blue and purple lattice design to the well. D.430mm  
\$200 – \$300
- 299 Crown Lynn 'Three Faces of Eve' table lamp in mat white. H.340mm  
\$400 – \$600

- 300 Crown Lynn 'Three Faces of Eve' table lamp with unusual cream glaze. *Gaylite, Auckland*, label affixed to the base. H.350mm  
\$400 – \$600
- 301 Pat Perrin  
Stoneware onion pot with cork stopper  
\$50 – \$100
- 302 Betty Beadle  
Stoneware lidded jar with abstract design. Impressed mark to the base  
\$30 – \$50
- 303 Warren Tippet  
Tenmoku stoneware dish with a wax resist foliate design  
\$30 – \$50
- 304 Toby Stafford  
Stoneware floor vase with aqua blue glaze to the upper section. Impressed potters mark to the base H.740mm  
\$250 – \$500
- 305 Phillippe Stark  
Flos Ara table lamp  
\$250 – \$350
- 306 A pair of American 1960s armchairs with gold vinyl upholstery raised on tapering legs  
\$400 – \$800





312



291



- 307 Piero Fornasetti  
A boxed set of eight lithographic transfer design coasters. 'Adamo' (Adam) pattern  
\$250 – \$350
- 308 Piero Fornasetti  
A boxed set of eight lithographic transfer design coasters 'Soli e lune' (sun and moon) pattern  
\$250 – \$350
- 309 Piero Fornasetti  
Occhi laminated wood tray. L.590mm  
\$250 – \$300
- 310 Green lucite biomorphic shaped vase.  
H.440mm  
\$200 – \$300



- 311 Charles and Ray Eames for Herman Miller Lounge chair and ottoman model 670 and 671 in black leather with walnut shell. Herman Miller label to the underside of the chair \$5000 – \$8000
- 312 Charles and Ray Eames for Herman Miller Moulded folding six panel cherry wood screen. H.1730mm \$2000 – \$3000
- 313 Charles and Ray Eames for Herman Miller Walnut time life stool, shape c. Complete with certificate of authenticity \$1200 – \$1500
- 314 Charles and Ray Eames for Vitra A set of six DSR chairs with white plastic seats. Factory labels and impressed marks to the base \$1500 – \$2500
- 315 A group of four New Zealand pottery vases. H. 320mm max \$150 – \$250
- 316 A group of five New Zealand pottery pieces, including three vases, a bowl and a small figural hanging plaque. H. 230mm max \$100 – \$200
- 317 Mirek Smisek Early pear-shaped vase with tenmoku glaze and incised waving decoration, marked. H. 170mm \$150 – \$250
- 318 Three New Zealand Studio Pottery pieces and an English Beswick double aperture vase. \$100 – \$200
- 319 Len Castle Stoneware sedge grass holder, umber pigmented with multiple apertures piercing the surface, impressed initials; together with a Doris Dutch stoneware paperweight, marked. The first, 100mm max \$50 – \$100
- 320 Len Castle Large stoneware vase with ash brown and grey glazes, impressed initials. H. 330mm \$200 – \$300
- 321 Jack Laird Large stoneware hanging vase, the textured surface with umber pigment, signed. W. 380mm \$100 – \$200
- 322 Steve Fuller Large terracotta hanging mask, with rust and green glazes, signed. H. 370mm \$100 – \$200
- 323 Len Castle Lava lake bowl, with sculptured cavetto and red lava glaze to the well and black matt stained exterior, impressed initials. D. 450mm \$3000 – \$5000

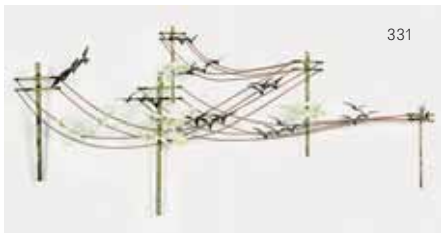
313







- 324 Len Castle  
Crater Lake bowl with alkaline blue glaze to the well and textured sculptured cavetto incised initials D. 480mm  
\$3000 – \$4000
- 325 Ces Renwick for Air rest Bahama lounge chair and ottoman, later upholstered in a red, blue, green and purple fabric. Made circa 1955  
\$1000 – \$1500
- 326 New Zealand made cantilevered rocking chair  
\$400 – \$600
- 327 A pair of Danish teak triple pronged lamps with cylindrical shades with a leaf pattern design, rewired  
\$600 – \$800
- 328 Italian Ferrari Toucan night lamp, rewired  
\$400 – \$600
- 329 Curtis Jere for Artisan House  
Large cork screw/ can opener. Mounted for wall suspension. H.570mm  
\$600 – \$800
- 330 A pair of Ben Seibel Jenfredware brass flame bookends. H.170mm  
\$250 – \$300
- 331 Curtis Jere for Artisan House  
Birds on a wire depicting numerous stylised birds nesting on telegraph wires. Signed and dated 1981. L.1150mm  
\$900 – \$1200
- 332 Toot a Loop Panasonic red radio  
\$200 – \$300
- 333 Wilf Wright  
Large shino glaze footed bowl, marked; together with a Gita Berzins large stoneware vase with applied enamelled geometrical decoration, impressed mark (both damaged). H. 380mm max  
\$80 – \$120
- 334 Patti Meads  
Eight stoneware goblets, H. 145mm; together with a porcelain bottle vase by Greg Barron, a stoneware bottle and two mugs, and a German porcelain water jug.  
\$80 – \$120
- 335 Len Castle  
Six stoneware spice jars, various sizes.  
\$100 – \$200
- 336 Bruce Martin  
Anagama fired vase of rectangular shape with a small aperture to the top, marked and dated 'NZ 90'  
\$100 – \$200
- 337 Estelle Martin  
Anagama fired vase with applied handles, marked and dated 'NZ 89'  
\$100 – \$200
- 338 Len Castle  
Large stoneware deep platter with ash glaze, impressed initials. W. 390mm  
\$400 – \$800
- 339 Len Castle  
Stoneware dish with matt green glaze, impressed initials. D. 240mm  
\$100 – \$200
- 340 Len Castle  
Set of three stoneware pouring bowls, with green and tenmoku glazes, all with impressed initials. D. 205mm  
\$200 – \$300
- 341 Duncan Shearer  
Stoneware soda fired cylindrical bottle vase, impressed mark. H. 270mm  
\$100 – \$200
- 342 Duncan Shearer  
Large stoneware soda fired vase, with applied handles to the shoulder, impressed mark. H. 360mm  
\$150 – \$300
- 343 Warren Tippett  
Stoneware vase, the dark grey glazed body decorated with sinuous lines pattern in relief, impressed mark. H. 220mm  
\$100 – \$200
- 344 Richard Parker  
Stoneware lidded jar with brushed decoration, signed to a label affixed to the base. H. 180mm  
\$60 – \$80
- 345 Duncan Shearer  
Three stoneware soda fired vessels, including a small vase and a pair of handled bowls, all with impressed marks. H. 135mm max  
\$40 – \$80
- 346 Warren Tippett  
A group of three stoneware vessels, including a jug, a small vase and a footed cup, all marked. H. 130mm max  
\$40 – \$80
- 347 Duncan Shearer  
Two small stoneware soda fired vases, both marked. H. 105mm max  
\$30 – \$50
- 348 Denis O'Connor  
A pair of slim stoneware mugs with ash glaze both marked. H. 105mm  
\$30 – \$50
- 349 Warren Tippett  
Stoneware plate with a pyramid design to the centre, signed. D. 180mm  
\$80 – \$120
- 350 Richard Parker  
Large green and yellow glazed terracotta deep dish, signed to a label affixed to the base. D. 270mm  
\$200 – \$300



- 351 Peter Collis  
Very large red glazed porcelain bowl (restored chip to the rim). D. 580mm x H. 290mm  
\$500 – \$800
- 352 Len Castle  
Large Sea secret earthenware form, with blue alkaline glazed interior, impressed initials. W. 320mm  
\$600 – \$800
- 353 Len Castle  
Stoneware sedge grass vase with five apertures, with textured surface, impressed initials. W. 275mm  
\$200 – \$400
- 354 Len Castle  
Stoneware hanging vase, with white ash glaze, unmarked. H. 280mm  
\$150 – \$300
- 355 Len Castle  
Large stoneware platter with purple glaze over tenmoku, impressed initials. D. 405mm  
Provenance: originally in the Brian Brake collection.  
\$400 – \$600
- 356 Peter Collis  
Porcelain vase with spire neck and blue turquoise crackle glaze  
H. 190mm  
\$60 – \$80
- 357 Ray Rogers  
Large stoneware floor vase with barium blue glaze  
D. 470mm  
\$400 – \$600
- 358 Bronwynne Cornish  
A pair of hand built earthenware candlesticks with figural decoration. H. 340mm  
\$600 – \$1000
- 359 Richard Cadness  
Two stoneware bottle vases, impressed initials to the base of each. H. 420mm  
\$100 – \$200
- 360 Robyn Stewart  
Large dung fired burnished bowl, the rim modelled in a Koru design [restored firing crack from the top rim]. D. 580mm  
\$1000 – \$2000
- 361 Mirek Smisek  
Circular stoneware tenmoku glazed dish with wax resist decoration, impressed initials. D. 360mm  
\$100 – \$200
- 362 Peter Stichbury  
Stoneware plate, black glaze over blue glaze, wax resist decoration, impressed mark. D. 295mm  
\$30 – \$50
- 363 Marilyn Wiseman  
Large stoneware dish with gestural decoration. W. 400mm  
\$80 – \$120
- 364 Three Crown Lynn Ironstone hand-painted planters; together with another ceramic planter, a Swedish Rorfrand pottery deep tray, and an enamelled brooch. H. 145mm max  
\$100 – \$200
- 365 Qantas and Teal 1956 Maori Travel poster designed by Harry Rogers. 490 x 360mm  
\$1000 – \$1500
- 366 Whites Aviation  
Two unframed hand coloured photographs, one depicting Lake Matheson, the other Routeburn Valley, both signed. 290 x 380 each  
\$100 – \$200
- 367 Whites Aviation  
Two vintage photographs, the first of Te Araroa beach, the second of Mt Taranaki, both signed, together with another photograph of a Fiordland landscape. Variable sizes.  
\$200 – \$300
- 368 Whites Aviation  
Two large hand coloured photographs, the first of Clearwater, the second of Mitre Peak, both signed and with title inscribed. 370 x 670mm each  
\$300 – \$500
- 369 Whites Aviation  
Large hand coloured photograph of Clearwater, signed, together with another large photograph of a South Island lake. The first, 490 x 730mm  
\$300 – \$500
- 370 A group of four vintage photographs, three depicting various South Island landscapes, the fourth showing Waiho Road  
\$200 – \$300
- 371 George Chance  
Three black and white gelatin silver prints photographs, comprising 'Summer Day – South Canterbury – N.Z.', 'Autumn in South Canterbury, N.Z.' and 'Spring Morning – Avon – Christchurch, N.Z.', all with title inscribed and signed, 200 x 250mm each  
\$200 – \$300
- 372 George Chance  
Hand coloured photograph titled 'A Cottage in Essex', together with two gelatin silver prints titled 'Maitai Valley – Nelson – N.Z.' and 'Landscape – Near Waitati' all with title inscribed and signed, variable sizes.  
\$200 – \$300
- 373 George Chance  
Two gelatin silver prints, comprising 'Summer Day – South Canterbury – N.Z.' and 'The Harbour – Otago – N.Z.', all with title inscribed and signed, variable sizes.  
\$200 – \$300



391



400

## Decorative Arts including the Max Cryer Collection

- 374 Antique milk copper can  
\$150 – \$250
- 375 19th century green painted wrought iron outdoor coat and umbrella stand, in the manner of Coalbrookdale. 1850 x 700mm  
\$500 – \$800
- 376 Colonial kauri cabinet, with a panelled cupboard door flanked by two drawers above two panelled cupboard doors with mottled kauri facias. 1080 x 700mm  
\$400 – \$600
- 377 Hand knotted Turkish tribal runner with repeating guls in red and blue.  
L. 2600mm  
\$200 – \$400
- 378 A pair of colonial bedside cabinets, each with mottled kauri facial, one cabinet on cabriole legs, the other on a platform base.  
W. 420mm  
\$600 – \$1000
- 379 19th century kauri framed gentleman parlour chair, raised on cabriole legs with white porcelain casters, gold brocade upholstery.  
\$400 – \$600
- 380 19th century square-backed kauri framed armchair, raised on turned legs with porcelain casters, teal brocade upholstery.  
\$300 – \$500
- 381 Large colonial duchess (dressing table) with central bevelled edge mirror flanked by small drawers, each pedestal having a further five drawers, mottled facias and original handles.  
W. 1600mm  
\$700 – \$1000
- 382 Kauri colonial scotch chest, with the single frieze drawer above a hat drawer, flanked by small drawers above three full width drawers with mottled facias. W.1300mm x H. 1330mm  
\$1000 – \$1800



- 383 Elaborately carved colonial kauri wall mirror with applied foliate scrolling mouldings with shield shaped mirror. 1130 x 800mm  
\$400 – \$800
- 384 Large decorative gilded 'moss' surface overmantle mirror. 1200x1100mm  
\$400 – \$800
- 385 Kauri colonial three tier dumb waiter, with two central section drawers with mottled facias. W. 1220mm  
\$300 – \$500
- 386 Hand knotted Turkish floor runner, with stylised floral decoration in russet and cream tones. L. 3300mm  
\$200 – \$400
- 387 New Zealand 'Depression Cabinet', probably made from pine and kauri apple boxes, with central cupboard door with Art Nouveau inspired inset copper panel, flanked by three small drawers with white porcelain handles. 630 x 550mm  
\$300 – \$500
- 388 Two hand knotted Turkish rugs, one in red and blue, the other in predominant brown shades  
\$200 – \$400
- 389 Colonial side chair in rewarewa raised on turned legs  
\$100 – \$200
- 390 Kauri side table, raised on bobbin turned legs united by a bobbin turned support. W. 900mm  
\$200 – \$400
- 391 Pair of French Louis XV bergeres chairs with gilded frames, raised on cabriole legs with pink velvet upholstery.  
\$1500 – \$2000
- 392 French Louis XV canapé (three seater sofa), the cresting piece with relief carved floral decoration, with gilded frame, raised on turned

legs, with pink and cream floral striped satin upholstery complete with three floral cushions. W.1690mm  
\$1000 – \$2000

- 393 Louis XV fauteuil raised on cabriole legs with gilded frame, and original needlework upholstery.  
\$900 – \$1200
- 394 Two-fold Rococo style screen with gilded framed and needlework panels. H. 1400 x W. 1200mm  
\$200 – \$400
- 395 Pair of French giltwood cane-back side chairs, raised on turned legs.  
\$300 – \$500
- 396 19th century Viennese fan, rendered in mother of pearl with lacework panels depicting putti figures in a giltwood case with ribbon impediment. 600 x 400mm Provenance: From the Vienna Opera House.  
\$500 – \$800
- 397 French giltwood piano duet stool, with floral satin pink and cream upholstery. W. 900mm  
\$300 – \$500
- 398 19th century French mirrored back credenza, with mottled cream marble top above small drawers with gilded handles above cupboards, raised on squat turned legs. W. 1600mm  
\$1000 – \$2000
- 399 Pair of French giltwood opera stools  
\$200 – \$400
- 400 Large and impressive early 19th century English Sebastian and Pierre Erard concert harp. Gilt with brass mounting decorated with classical figures and angels, inscribed Sebastian and Pierre Erard, patent no. 6790 78, Great Marlborough Street, London. The internal mechanism has been damaged and the harp can no longer be actually played – but has

been restrung – as a highly decorative item. H. 1800 x W. 900mm  
\$1500 – \$2000

- 401 Porch entrance lamp in solid brass and copper with glass panels. H. 400mm  
\$400 – \$600
- 402 Solid mottled kauri blanket box, the top showing wear. W. 940mm  
\$150 – \$250
- 403 French gilded side table with marble top raised on tapering legs. W. 620mm  
\$300 – \$500
- 404 An upright piano (Stodart, New York), in excellent condition with stool with cabriole legs. Max Cryer used this piano to rehearse many TV shows and appearances, and eleven LP albums.  
\$400 – \$800
- 405 Colonial kauri round back armchair, raised on turned legs with white porcelain casters, yellow velvet upholstery.  
\$200 – \$400
- 406 19th century partners desk, each side with a pedestal of four drawers with leatherette top. W. 1380mm x D. 880mm  
\$800 – \$1200
- 407 American Ansonia Clock Company mantle clock with a spelter figure of Isaac Newton modelled in high relief. The clock face with white enamelled dial with visible escapement. Circa 1884. W. 410mm  
\$400 – \$600

409



- 408 Mottled kauri New Zealand colonial deed box. W. 365mm  
\$100 – \$200
- 409 19th century polychrome painted wooden figure of the Virgin Mary with glass eyes raised from a stepped plinth. H.970mm  
\$1000 – \$1500
- 410 Three cut glass decanters (one with a small chip)  
\$100 – \$200
- 411 Three cut glass decanters, one with 'Burgundy' tag; together with two extra lids  
\$100 – \$200
- 412 Four cut glass decanters of globular shape  
\$150 – \$300
- 413 A set of eight Chippendale style chairs, comprising one arm chair and seven side chairs, each with interlacing back splats and drop in seats raised on square section legs  
\$1000 – \$2000
- 414 Chippendale mahogany armchair with serpentine shaped arms raised on square section legs  
\$200 – \$400
- 415 Set of six William IV period rosewood side chairs  
\$600 – \$800
- 416 Walnut chest on stand. The upper section with two small drawers above three full width drawers. The stand with serpentine shaped apron on cabriole legs. 18th century and later. W.290mm H.1420mm  
\$1000 – \$2000
- 417 Victorian couch with serpentine scroll back centred by foliate carved top rail with red velour upholstery raised on cabriole legs  
\$500 – \$800
- 418 19th century mahogany chest of drawers with two small drawers above three full width drawers  
\$800 – \$1200
- 419 19th century mahogany side table raised on a turned pedestal on three splayed legs  
\$200 – \$300
- 420 18th century oak court cupboard of good proportions. The upper section with panelled cupboards, the lower section with two drawers above panelled cupboards. H.1750mm W.1140mm  
\$2000 – \$3000
- 421 18th Century oak refectory table, with plank top raised on square section legs united by starches. L. 2130mm x W. 640mm  
\$2500 – \$3500
- 422 Arts and Crafts sterling silver teapot with wooden handle, London 1919 by John Eldridge. W. 290mm  
\$300 – \$500



- 423 Pair of Victorian sterling silver tablespoons, engraved with the letter 'M', Edinburgh hallmark. L. 225mm  
\$80 – \$120
- 424 Two Sheffield sterling silver salts with later plastic interior replacement, together with a plated silver bon bon dish.  
\$40 – \$80
- 425 Cased set of six sterling silver teaspoons, together with an ink case, all sterling silver, various hallmarks.  
\$50 – \$100
- 426 19th century French gilded bronze clock, featuring a noble lady reading a letter seated on a couch. The clock is an early example with silk suspension, likely manufactured between 1810-1830. H. 420mm  
\$3500 – \$5000
- 427 Selection of Chinese pottery from the Tek Sing shipwreck, including eight blue and white bowls, four spoons, three celadon saucers, and five olive-brown glazed saucers.  
\$50 – \$100
- 428 Chinese decorative wooden house panel with two lines of calligraphy. H. 1265mm  
\$80 – \$120
- 429 19th century cast stone Putti figure garden statue. H.700mm  
\$200 – \$400
- 430 Pair of French late 19th century armchairs with acanthus carving to the arms raised on carved lions paw feet with tapestry back and seat  
\$1800 – \$2400
- 431 Oak Arts and Crafts desk with single frieze drawers and pierced side panels uniting the square section legs  
\$600 – \$1200
- 432 Rex Chapman Taylor  
Pair of Kauri hand adzed armchairs with leather seats  
\$200 – \$400
- 433 Rex Chapman Taylor  
Arts and crafts style cabinet with a shelf above a panelled door  
\$100 – \$200
- 434 Rex Chapman Taylor  
Pair of hand adzed Kauri bench seats  
\$200 – \$400



## Jewellery

- 435 Impressive 18ct gold and platinum three stone diamond ring, the three stones in line, with platinum square claw settings. The centre stone estimated at 1.00 carat D-E colour, VS clarity. The two side stones estimated 1.22 carats, D-F colour, VS clarity. The ring is in very good condition.  
New comparison value \$30,000  
\$8,500 – \$10,000
- 436 Victorian [1894] gold sovereign set as a pendent in a 9ct gold mount, with chain \$400 – \$500
- 437 18ct gold antique diamond ring in a bridge setting  
\$600 – \$800
- 438 18ct gold and platinum diamond ring in a bridge setting  
\$500 – \$700
- 439 Diamond solitaire ring in platinum, palladium and 18ct gold  
\$150 – \$250
- 440 18ct gold and diamond antique ring in a cluster setting  
\$300 – \$500



436

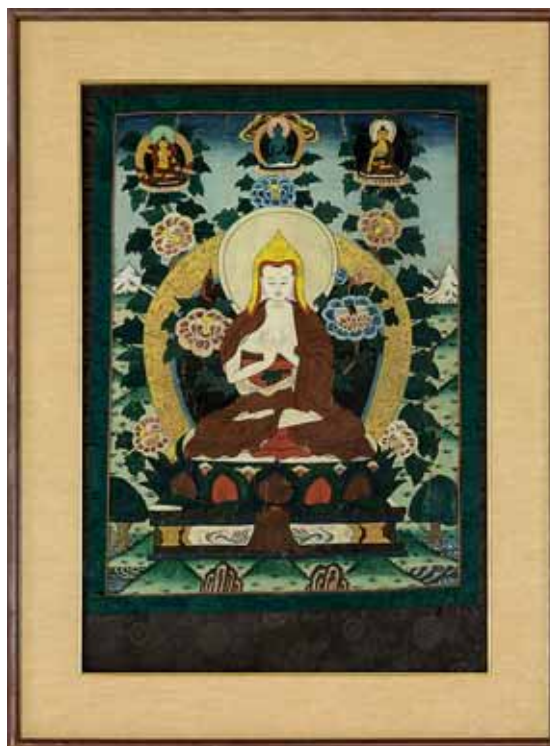


## NZ artefacts and Tribal Art

- 441 A large and impressive argillite ridge back toki. L.450mm. W.64mm. Y registration 7000  
\$1500 – \$2000
- 442 Papua New Guinea wooden bowl with long carved handle (some damage). L. 500mm  
\$150 – \$300
- 443 Maori folk art carved taniwha with paua shell eyes. H. 220mm  
\$200 – \$300
- 444 Maori folk art lamp base carved with wheku heads with paua shell eyes. H. 470mm  
\$400 – \$600
- 445 Papua New Guinea wooden figure of a woman wearing a large bird-like headrest. H. 370mm  
\$100 – \$200
- 446 Kauri, burr totara and other New Zealand timber casket, with a hinged cover with internal pocket, raised on cabriole legs. H. 280mm  
\$250 – \$350
- 447 Alan Brown  
Two pounamu pendants of natural yellow-green tone. H. 40 mm  
\$60 – \$80
- 448 New Zealand folk art coffee table of rectangular shape. The top carved with tiki figures and manaia and wheku heads. 980 x 490mm  
\$200 – \$400
- 449 New Zealand Railways Studio  
'Protect your Native Birds and Forests' poster, 1960s, issued by Forest and Bird Protection Society, depicting a tui sitting on a kowhai branch. 880 x 570mm  
\$300 – \$500
- 450 Pounamu Hei tiki, translucent tangiwai (bowenite) presented in the conventional manner with hands placed to thighs. Two circular eyes with red sealing wax pierced at the forehead. L. 100mm. Y registration 17504  
\$500 – \$800
- 451 Five Papua New Guinea tapa cloth, various sizes  
\$200 – \$400
- 452 Vanuatu 19th century war club with tapering cylindrical shaft with cone shaped head and four projecting bulbous knobs. L.800mm  
\$150 – \$300
- 453 Fijian Masi Tapa with geometric design. 1220 x 1800mm  
\$100 – \$200

## Collection of Tibetan Thangkas

- 454 Hand painted thangka depicting Atisha seated on a lotus throne with hands in the teaching mudra. Atisha was the Indian Buddhist master who helped to revive Buddhism in Tibet in the 11th century. Ladakh early 20th century, framed within a brocade boarder. 700 x 490mm  
\$800 – \$1200
- 455 Hand painted thangka depicting Avalokiteshvara, the Buddha of infinite compassion flanked by the Bodhisattvas Green Tara and White Tara. 580 x 400mm  
\$500 – \$800
- 456 Fine hand painted thangka depicting Milarepa seated in his mountain Cave on a yogins antelope skin holding a skull cup. Milarepa is regarded as the most famous Buddhist figure in Tibet. Renown for becoming enlightened in one life time and teaching through spontaneous songs of realisation. 820 x 570mm Together with volume one and two of the *Hundred Thousand songs of Milarepa* (Shambhala Dragon Publications)  
\$800 – \$1200
- 457 Embroidered Thangka of Green Tara made by the Tu people in Qinghai province, China, circa 1985. 840 x 520mm  
\$600 – \$800
- 458 Hand painted thangka depicting Padmasambhava the lotus born Guru. Padmasambhava was the tantric master invited to Tibet by King Trisong Detsen to establish Buddhism in the eighth century. Depicted seated on a lotus throne with skull cup and holding a Vajra. Ladakh early 20th century, framed within a brocade boarder. 690 x 480mm  
\$800-\$1200
- 459 Hand painted and gilded Tibetan thangka depicting Green Tara  
\$100 - \$200
- 460 Hand painted Cultural Revolution poster depicting a young student wearing a Red Guard arm band. 800 x 560mm  
\$300-\$500



454

# Conditions of sale

Please note: it is assumed that all bidders at auction have read and agreed to the conditions described on this page. ART+OBJECT directors are available during the auction viewing to clarify any questions you may have.

1.

**Registration:** Only registered bidders may bid at auction. You are required to complete a bidding card or absentee bidding form prior to the auction giving your correct name, address and telephone contact + supplementary information such as email addresses that you may wish to supply to ART+OBJECT

2.

**Bidding:** The highest bidder will be the purchaser subject to the auctioneer accepting the winning bid and any vendor's reserve having been reached. The auctioneer has the right to refuse any bid. If this takes place or in the event of a dispute the auctioneer may call for bids at the previous lowest bid and proceed from this point. Bids advance at sums decreed by the auctioneer unless signaled otherwise by the auctioneer. No bids may be retracted. The auctioneer retains the right to bid on behalf of the vendor up to the reserve figure.

3.

**Reserve:** Lots are offered and sold subject to the vendor's reserve price being met.

4.

**Lots offered and sold as described and viewed:** ART+OBJECT makes all attempts to accurately describe and catalogue lots offered for sale. Notwithstanding this neither the vendor nor ART+OBJECT accepts any liability for errors of description or faults and imperfections whether described in writing or verbally. This applies to questions of authenticity and quality of the item. Buyers are deemed to have inspected the item thoroughly and proceed on their own judgment. The act of bidding is agreed by the buyer to be an indication that they are satisfied on all counts regarding condition and authenticity.

5.

**Buyers premium:** The purchaser by bidding acknowledges their acceptance of a buyers premium of 17.5% + GST on the premium to be added to the hammer price in the event of a successful sale at auction.

6.

**ART+OBJECT is an agent for a vendor:** A+O has the right to conduct the sale of an item on behalf of a vendor. This may include withdrawing an item from sale for any reason.

7.

**Payment:** Successful bidders are required to make full payment immediately post sale – being either the day of the sale or the following day. If for any reason payment is delayed then a 20% deposit is required immediately and the balance to 100% required within 3 working days of the sale date. Payment can be made by Eftpos, bank cheque or cash. Cheques must be cleared before items are available for collection. Credit cards are not accepted.

8.

**Failure to make payment:** If a purchaser fails to make payment as outlined in point 7 above ART+OBJECT may without any advice to the purchaser exercise its right to: a) rescind or stop the sale, b) re offer the lot for sale to an underbidder or at auction. ART+OBJECT reserves the right to pursue the purchaser for any difference in sale proceeds if this course of action is chosen, c) to pursue legal remedy for breach of contract.

9.

**Collection of goods:** Purchased items are to be removed from ART+OBJECT premises immediately after payment or clearance of cheques. Absentee bidders must make provision for the uplifting of purchased items (see instructions on the facing page)

10.

**Bidders obligations:** The act of bidding means all bidders acknowledge that they are personally responsible for payment if they are the successful bidder. This includes all registered absentee or telephone bidders. Bidders acting as an agent for a third party must obtain written authority from ART+OBJECT and provide written instructions from any represented party and their express commitment to pay all funds relating to a successful bid by their nominated agent.

11.

**Bids under reserve & highest subject bids:** When the highest bid is below the vendor's reserve this work may be announced by the auctioneer as sold 'subject to vendor's authority' or some similar phrase. The effect of this announcement is to signify that the highest bidder will be the purchaser at the bid price if the vendor accepts this price. If this highest bid is accepted then the purchaser has entered a contract to purchase the item at the bid price plus any relevant buyers premium.

## Important advice for buyers

The following information does not form part of the conditions of sale, however buyers, particularly first time bidders are recommended to read these notes.

A.

**Bidding at auction:** Please ensure your instructions to the auctioneer are clear and easily understood. It is well to understand that during a busy sale with multiple bidders the auctioneer may not be able to see all bids at all times. It is recommended that you raise your bidding number clearly and without hesitation. If your bid is made in error or you have misunderstood the bidding level please advise the auctioneer immediately of your error – prior to the hammer falling. Please note that if you have made a bid and the hammer has fallen and you are the highest bidder you have entered a binding contract to purchase an item at the bid price. New bidders in particular are advised to make themselves known to the sale auctioneer who will assist you with any questions about the conduct of the auction.

B.

**Absentee bidding:** ART+OBJECT welcomes absentee bids once the necessary authority has been completed and lodged with ART+OBJECT. A+O will do all it can to ensure bids are lodged on your behalf but accepts no liability for failure to carry out these bids. See the Absentee bidding form in this catalogue for information on lodging absentee bids. These are accepted up to 2 hours prior to the published auction commencement.

C.

**Telephone bids:** The same conditions apply to telephone bids. It is highly preferable to bid over a landline as the vagaries of cellphone connections may result in disappointment. You will be telephoned prior to your indicated lot arising in the catalogue order. If the phone is engaged or connection impossible the sale will proceed without your bidding. At times during an auction the bidding can be frenetic so you need to be sure you give clear instructions to the person executing your bids. The auctioneer will endeavour to cater to the requirements of phone bidders but cannot wait for a phone bid so your prompt participation is requested.

D.

**New Zealand dollars:** All estimates in this catalogue are in New Zealand dollars. The amount to be paid by successful bidders on the payment date is the New Zealand dollar amount stated on the purchaser invoice. Exchange rate variations are at the risk of the purchaser.



# Absentee bid form

Auction No. 99

**New Collectors Art**  
 Tuesday 8 December 2015  
 (lots 1–211)

**Decorative Arts**  
 Wednesday 9 December 2015  
 (lots 220–460)

This completed and signed form authorises ART+OBJECT to bid on my behalf at the above mentioned auction for the following lots up to prices indicated below. These bids are to be executed at the lowest price levels possible.

I understand that if successful I will purchase the lot or lots at or below the prices listed on this form and the listed buyers premium for this sale (17.5%) and GST on the buyers premium. I warrant also that I have read and understood and agree to comply with the conditions of sale as printed in the catalogue.

Lot no.	Lot Description	Bid maximum in New Zealand dollars (for absentee bids only)
_____	_____	_____
_____	_____	_____
_____	_____	_____
_____	_____	_____
_____	_____	_____
_____	_____	_____
_____	_____	_____
_____	_____	_____
_____	_____	_____
_____	_____	_____
_____	_____	_____
_____	_____	_____

**Payment and Delivery** ART+OBJECT will advise me as soon as is practical that I am the successful bidder of the lot or lots described above. I agree to pay immediately on receipt of this advice. Payment will be by cash, cheque or bank transfer. I understand that cheques will need to be cleared before goods can be uplifted or dispatched. I will arrange for collection or dispatch of my purchases. If ART+OBJECT is instructed by me to arrange for packing and dispatch of goods I agree to pay any costs incurred by ART+OBJECT. Note: ART+OBJECT requests that these arrangements are made prior to the auction date to ensure prompt delivery processing.

Please indicate as appropriate by ticking the box:  PHONE BID  ABSENTEE BID

MR/MRS/MS \_\_\_\_\_

FIRST NAME: \_\_\_\_\_ SURNAME: \_\_\_\_\_

ADDRESS: \_\_\_\_\_

HOME PHONE: \_\_\_\_\_ MOBILE: \_\_\_\_\_

BUSINESS PHONE: \_\_\_\_\_ EMAIL: \_\_\_\_\_

Signed as agreed: \_\_\_\_\_

To register for Absentee or Phone Bidding this form must be lodged with ART+OBJECT by 2pm on the day of the published sale time in one of three ways:

1. Email a printed, signed and scanned form to ART+OBJECT: info@artandobject.co.nz
2. Fax a completed form to ART+OBJECT: +64 9 354 4645
3. Post a form to ART+OBJECT, PO Box 68 345 Newton, Auckland 1145, New Zealand

# New Collectors Art

Tuesday 8 December 2015

# Decorative Arts

Wednesday 9 December 2015

