

ART OBJECT





1

The SULU Gallery Collection

Page 11

Wednesday 24 October 2007 at 6.30 pm

African art, Japanese furniture and Chinese ceramics

2

New Collectors Art

Page 23

Thursday 25 October 2007 at 6.30 pm

3

OMNI / The Manson Estate Collection

Page 57

Thursday 8 November 2007 at 6.30 pm

Including important New Zealand furniture, marble statuary, Royal Worcester, silver and Art Nouveau and Deco items

ART OBJECT

THE 21st CENTURY
AUCTION HOUSE

3 Abbey Street, Newton
PO Box 68 345, Newton
Auckland 1145, New Zealand
Phone +64 9 354 4646
Freephone 0800 80 60 01
Facsimile +64 9 354 4645
info@artandobject.co.nz
www.artandobject.co.nz

(cover)

Jane Brenkley
handcarved side table
Signed and dated, 1944
Lot 257, Omni / The Manson
Estate Catalogue

(opposite)

Gordon Walters
Rauponga (detail)
screenprint, 1983
Lot 107, New Collectors Catalogue

The Role of the Collector

Perhaps the most informative and rewarding experience the directors and staff at A+O enjoy is our daily interaction with the collectors who come to us buy, sell and to swap war stories of a rare treasure found or a mysterious new line of enquiry.

This catalogue is dedicated to the collecting energy and vision of numerous unique and engaging individuals, in particular Jeff Hobbs, the renowned Wellington based Tribal arts collector and retailer and the late Colin Manson, whose passion for fine statuary and ceramics has resulted in the magnificent collection it is our pleasure to offer as the centrepiece of our November 8 Omni auction.

The Colin and Kathy Manson collection of fine statuary, ceramics and decorative arts.

Colin Manson (b. 1933, d. 1998) was a well known figure in the property industry in the latter third of the 20th century. Manson Developments was responsible for numerous projects throughout Auckland and Colin's last major project was the Mon Desir apartments in Takapuna.

The company continues today in the capable hands of Colin's son Ted and grandsons Culum, Luke and Mac and is still very much an active force in the industry. Away from the demands of the property industry Colin was a keen collector with a refined eye for the elegance of Art Deco, Moorcroft ceramics and the fine statuary contained in this catalogue.

The collection really gathered steam when Colin and his wife Kathy bought a large home in Herne Bay in the early 1990s designed by leading architect Pete Bossley. At over 8000 ft² the house was designed for entertaining on a grand scale. Many great events were held at the Manson home over the years and a number these were fundraising events for Colin's favourite charity cause, child cancer. Some of the proceeds of this auction will be donated to this cause.

The house was a modern take on a Greco-Roman villa and lent itself naturally to the collection that Colin and Kathy assembled. The bronze and marble statues that adorned the interior are from another more gracious era and were the perfect scene setters for the functions and events held at the Herne Bay villa.

Most of the sculptures in the Colin and Kathy Manson collection were acquired in New Zealand at auction or by hours of searching and discovery. In many ways the collection is an insight into the tastes of our forbears from the 19th century and this auction represents the first time in decades, if ever, that such a rich and concentrated collection is available to be seen together.

ART+OBJECT is pleased to offer the serious student and the first time caller a superb range of items including African Tribal arts, Oriental ceramics and furniture, Royal Worcester, marble and bronze statuary, New Zealand colonial furniture and folk art and numerous other treasures over the three auctions assembled in this catalogue. It is our job to guide these items to new homes and fresh collectors, who will care for and protect them into the future. We look forward to meeting these new owners during the course of the pre auction viewings in October and November:

***Pictured:** The late Colin and Kathy Manson, combining business, collecting and philanthropy*





State of the art.

Inspiration, innovation and dedication lead to the creation of the world's most beautiful cars.
Experience the ultimate expression of form and function for yourself at Giltrap Prestige.

Giltrap

Prestige

100 Great North Rd, Auckland. Phone 360 3200. www.giltrap.co.nz

ART OBJECT

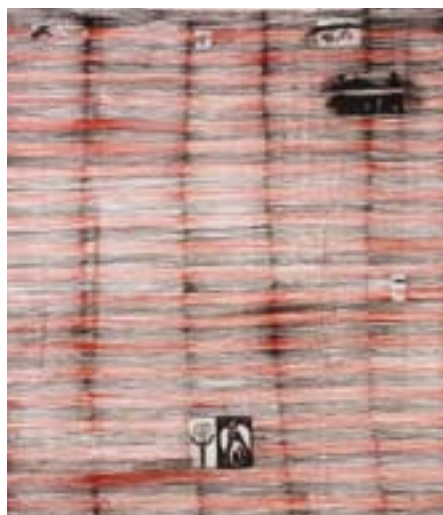
THE 21st CENTURY
AUCTION HOUSE

Contemporary Art Highlights

A+O's October 4 contemporary ART+OBJECT auction saw a full room and over 50 phone bidders contesting a cutting edge selection of contemporary art and arguably the finest selection of contemporary and New Zealand modernist objects yet offered to the market. A few of the sale highlights are illustrated on these pages. Note: prices indicated do not include the buyers premium of 12.5% + Gst on the premium.



Ronnie van Hout
sold for \$6250



John Pule
sold for \$32 500



Fiona Pardington
sold for \$6000



Peter Stichbury
sold for \$16 000



Reuben Paterson
sold for \$17 500



Lionel Bawden
sold for \$25 000



Peter Robinson
sold for \$23 000



Tony de Lautour
sold for \$3800
and \$3400 respectively



Michael Parekowhai
sold for \$7250

Object Highlights

ART OBJECT



John Edgar
sold for \$2400



John Reynolds + Peter Collis
sold for \$2000



Robyn Stewart
sold for \$3500



Martin Popplewell
sold for \$1300



Mirek Smisek
sold for \$700



Frank Carpay
sold for \$3200



Frank Carpay
sold for \$3000



Len Castle
sold for \$2800



Important New Zealand Paintings & In 3D

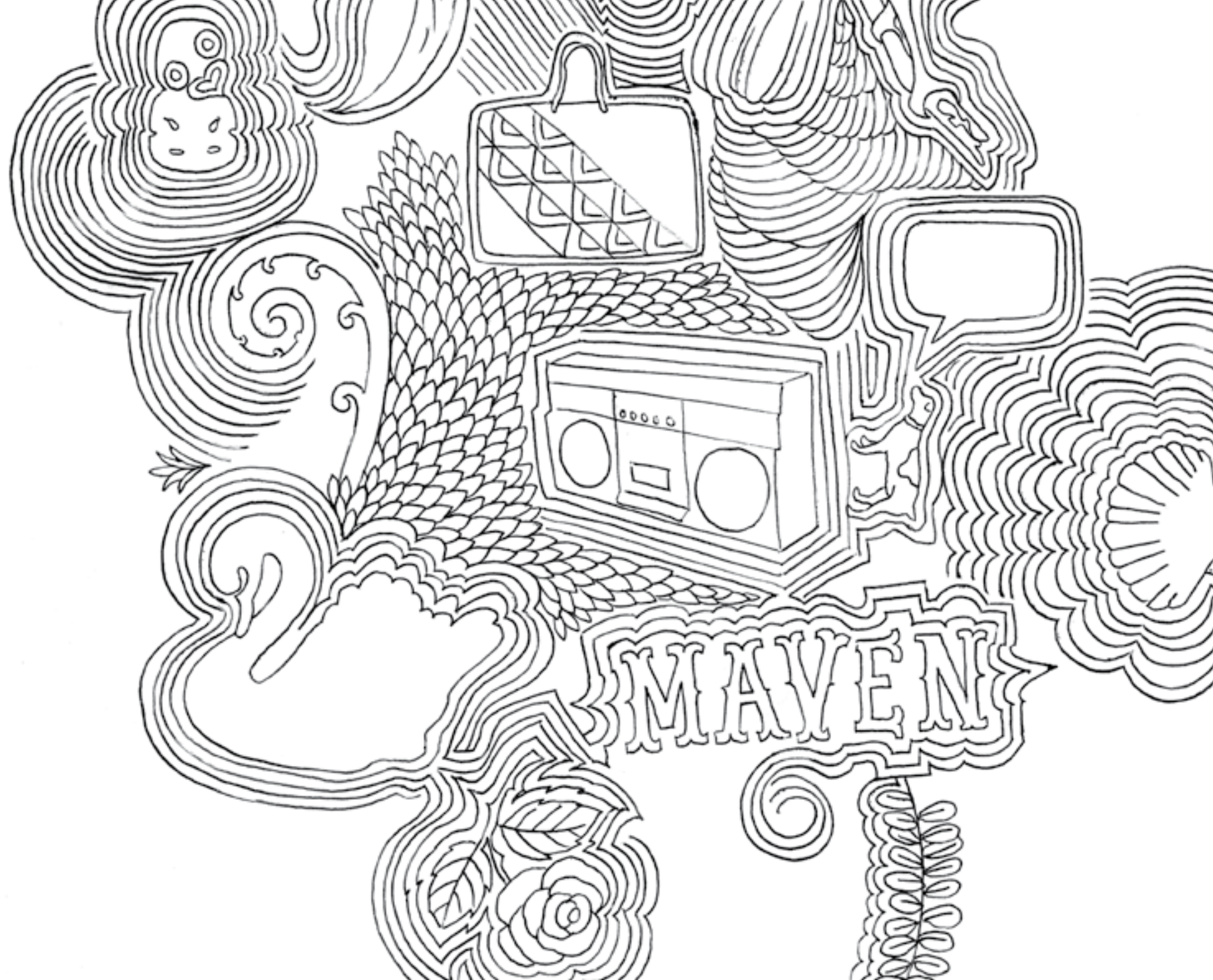
NZ & International Sculpture + Design Art

Thursday 22 November **Entries invited until October 19**

Enquiries to Ben Plumbly, ben@artandobject.co.nz tel +64 9 354 4646 mob 021 222 8183
or Hamish Coney, hamish@artandobject.co.nz tel +64 9 354 4646 mob 021 509 550

Richard Killeen

The Politics of Geometry
acrylic and collage on 29
aluminium pieces
title inscribed and dated 10 May 1991
1710 x 2660mm variable
\$25 000 - \$30 000



20th Century Design


Including the
Michael Barrymore
and Shaun Davis
Collection

Saturday 8 December

The Michael Barrymore and Shaun Davis collection is remarkable for the diversity of furniture, glassware and ceramics. Highlights include a Ralph Lauren suite of commissioned leather furniture, high quality Art Deco figurines, Murano Glass and exquisite decorator items and sculpture.

Entries invited until 30 October

Enquiries to James Parkinson,
james@artandobject.co.nz
+64 9 354 4646 mob 021 222 8184
and Ross Millar,
ross@artandobject.co.nz
+64 9 354 4646 mob 021 222 8184



A large Murano patchwork (detail)
glass vase one of over 30 lots of fine
Italian and European glassware

The Barry Wilkes Collection of Film + TV related toys

Tuesday 11 December

A+O has been appointed to auction the finest collection of TV related toys ever offered in New Zealand. The Wilkes collection assembled over forty years is of international quality. Almost every Gerry Anderson related Dinky toy is included in the sale in mint-and-boxed condition.

In addition the collection includes over 50 rare mint-on-card and boxed 1970s and 80s Star Wars toys + a cornucopia of collectable kitsets, as new boxed toys and games. Over 250 lots will be offered.

A limited number of entries are invited until 30 October to compliment this important toy collection

Enquiries to James Parkinson,
james@artandobject.co.nz
+64 9 354 4646 mob 021 222 8184
and Hamish Coney,
hamish@artandobject.co.nz
+64 9 354 4646 mob 021 509 550



A selection of boxed Dinky and Corgi from the Barry Wilkes Collection



The SULU Gallery Collection of African art, Japanese furniture and Chinese ceramics

Collecting rare tribal arts in New Zealand is typically confined to Oceanic material. This is a natural consequence of our geographic location in the South Pacific. Africa is a vast continent with a bewildering array of regional, tribal and language based styles. The Sulu Gallery in Wellington has been one of the few outposts in New Zealand where collectors and those seeking an education can view at first hand the richness and huge diversity of cultural production.

African tribal art collectors may commence their interest with an aesthetic attraction, but most soon become educated and respond to the deeper spiritual significance of the items. African tribal art has been described as fundamentally religious. Not so much in a sense that we may understand through the choice of an unequivocal iconography but in a wider sense that many items represent the human races ultimate relationship to the forces that created and maintain the universe, both visible and invisible. Men and women's role in the cosmos is acknowledged by artworks that record rites of passage such as attaining maturity, birth, marriage and death.

Each item has a defined role in revealing narratives and it is to these great themes that collectors of Tribal Arts are given an insight.

The addition to the Hobbs family of son James has led to the decision to close the much loved and iconic Sulu Gallery after eight years trading.

Jeff Hobbs' two areas of keenest interest have been African and Oriental arts and furniture. The collection of works in this catalogue represents these twin interests, items he has collected over the past two decades from his art dealing days in Manhattan to exploring the Japanese countryside around Kyoto. They include examples of African artefacts from the famous Moses Asch collection and Japanese furniture and objects.

Each item has been handpicked by Jeff from overseas auctions, respected dealers and private collections throughout the world.

Jeff says even though he'll be immersed in his paternal role over the next twelve months or so, he will actively continue to seek out collections and acquire treasures wherever possible with a view to re-establishing his gallery in 2009.



The Sulu Gallery Collection

Wednesday 24 October 2007 at 6.30 pm

African art, Japanese furniture and Chinese ceramics

Lots 1 - 248

Pages 11 - 21

VIEWING

Friday	19 October	9am – 5pm
Saturday	20 October	11am – 4pm
Tuesday	23 October	9am – 5pm
Wednesday	24 October	9am – 1pm

Note: Sunday 21 and Monday 22, gallery closed

Enquiries James Parkinson at james@artandobject.co.nz 021 222 8184

ART OBJECT

THE 21st CENTURY
AUCTION HOUSE

3 Abbey Street, Newton
PO Box 68 345, Newton
Auckland 1145, New Zealand
Phone +64 9 354 4646
Freephone 0800 80 60 01
Facsimile +64 9 354 4645
info@artandobject.co.nz
www.artandobject.co.nz

1

A Large and decorative Japanese sake bottle with incised calligraphic script
h.440mm
\$100-\$200

2

An Edo period cast iron temple candlestick
h.370mm
\$80-\$120

3

A Japanese scroll with calligraphic inscription
\$20-\$40

4

A Japanese Shigaraki ware vase
ovoid shape with green drip glaze
\$50-\$80

5

A Japanese Kiri wood hibachi with copper insert
d.320mm
\$50-\$80

6

A good Japanese Mieji period bronze temple vase, urn form decorated with a dragon encircling the vase modelled in high relief
h.320mm
\$900-1500

7

A Japanese sake bottle
h.220mm
\$20-\$40

8

A pair of Sumo Gata (sumo wrestler's sandals)
\$200-\$300

9

A Late Meiji period ebonised hibachi with gold lacquer overlay inlaid with cut mother of pearl, complete with copper brazier and bamboo incense holder
d.220mm
\$200-\$400

10

A Japanese bamboo and brass opium pipe
\$10-\$20

11

A Japanese temple door lock and one other
\$30-\$60

12

A Japanese Meiji period black lacquer snuff box inlaid in cut abalone shell with a scholar at his table
\$150-\$250

13

A Japanese Meiji period Arita charger painted in blue and white with pagoda houses beside a river with mountainous background
d.410mm
\$350-\$500

14

A Japanese Meiji period charger similar to the above painted with a flowering tree beside a river
d.460mm
\$350-\$500

15

A Japanese Meiji period hinoki wood isho-dansu (clothing chest) with five drawers with cast iron handles
w.1070mm h.1060mm
\$600-\$800

16

An Edo period paulowina wood Kusuri-dansu (medicine chest) with two sliding panels above numerous small drawers with original paper labels with calligraphic inscriptions
w.860mm h.950mm
\$1000-\$2000

17

A Meiji period cho-dansu (merchant's chest) in ebonised paulowina with eighteen small drawers with iron handles
w.800mm h.750mm
\$600-\$800

18

A zelkova veneer hibachi with copper lining
\$80-\$120

19

A Meiji period hinoki wood cha-dansu (tea cabinet) with sliding cupboards with burr keyaki panels and small drawers
w.700mm h.720mm
\$400-\$600

20

A late Meiji period paulowina wood Shinto butsudan (shrine cabinet).The interior with panelled cupboards and with sliding shelf for prayer books and offerings. The cabinet complete with two small porcelain Inari sama (Shinto fox guardian deities), a Shinto priest figure, a figure of Hotei and a box of prayers housed in the central compartment
w.730mm h.500
\$700-\$1000

21

A late Meiji period paulowina wood Kusuri-dansu (medicine cabinet) of small proportions with twenty five small drawers, some original paper labels remain
h.480mm w.450mm
\$400-\$600

22

A late Edo period paulowina wood isho kasane-dansu (stacking clothing chest) The drawer fascias with fan shaped lock plates and forged iron handles
w.900mm h.1040mm
A similar cabinet illustrated in Japanese cabinetry-the art and craft of tansu
\$650-1200

23

A good Meiji period Kaidan-dansu (step chest) in hinoki wood with sliding compartments and numerous drawers Complete with original hand rail
w.1700mm h.2100mm
\$4000-\$5000

24

A Meiji period Kaidan-dansu (step chest) in hinoki and keyaki with sliding compartments and drawers Complete with bamboo hand rail
w.1540mm h.2250mm
\$4000-5000

25

A Meiji period ebonised paulowina wood isho Kasane-dansu (stacking clothing chest) with three small drawers above four full width drawers
h.1200mm w.1060mm
\$800-\$1200

26

A late Meiji period shoko-dansu (document box)
w.710mm
\$100-200

27

A late Meiji period paulowina wood Katana-dansu (sword chest)
w.1280mm
\$300-400

28

A Meiji period zelkova wood zeni-bako (temple money box)
400x 300mm
\$250-\$350

29

A Meiji period ebonised paulowina wood cho-dansu (merchant's chest) with a single drawer above sliding panelled cupboards above small drawers and a cupboard
w.820mm h.850mm
\$500-\$800

30

A Meiji period paulowina isho-kasane dansu (stacking clothing chest) with sliding panelled cupboards above drawers with copper forged handles
w.880mm h.1600mm
\$800-\$1200



42

31

13

52

21

97

96

14

37

28

98

60

22

33

32

98a

31

A late Meiji period paulowina and hinoki wood mizuya-dansu (kitchen cupboard) in two sections with sliding cupboards above numerous drawers with forged copper handles
h.1620 x w.1200mm
\$1000-1500

32

An Edo period cho-dansu (tool chest) with a single drawer to the base with metal bindings decorated with chrysanthemum flower heads
w.700mm
\$450-\$650

33

Japanese Go board raised on four legs
w.450mm
\$80-120

34

A Taisho period zekova cha-dansu (tea chest) with sliding panels above an open compartment and small drawers h.930mm w.740mm
\$150-250

35

A Taisho period red lacquer chest of drawers with two small drawers above three full width drawers
w.600mm h.660mm
\$100-\$200

36

A Meiji period paulowina wood Kasane-dansu (clothing chest) with four full width drawers
w.900mm h.900mm
\$500-\$800

37

A Late Meiji period black lacquer food storage container
\$200-\$300

38

A Meiji period temple shrine and bronze cast figure of Quan Yin.The shrine with pagoda top raised on tapering pillar supports.The figure of Quan Yin modelled standing with left hand in the teaching mudra and right hand holding a lotus
\$1200-\$2000

39

A Japanese Meiji period hinoki and zekova wood mizuya-dansu (kitchen cupboard)
The upper section with sliding panelled cupboards above three small drawers.The lower section with a single full width drawer above sliding panelled cupboards and numerous small drawers
w.1040mm h.1740mm
\$1000-\$2000

40

A Japanese cedar rama panel depicting a mountainous landscape with black lacquer frame
380 x 1760mm
\$150-\$250

41

A Japanese cedar rama panel depicting temples and houses in a landscape
380 x 1760mm
\$150-\$250

42

A pair of large decorative Rajastani Figures, the male and female figures modelled standing, each raised on a plinth base h.1500mm
\$500-\$1000

43

A Japanese Yukata, hand stitched blue dyed indigo and a Yukata and bamboo umbrella
\$40-\$80

44

A West African Mossi blanket
\$60-100

45

A Japanese temple post
\$30-\$40

46

A Kurdish hand loom Kelim rug with lineal banded pattern and goat wool fringe
2460 x 1700mm
\$500-800

47

A Japanese Edo period saddle lacquered with gilded detail and with bronze fittings complete with abumi (stirrups)
\$800-\$1200

48

Two Chinese red lacquer panels carved with figures
\$100-\$200

49

A Japanese Rattan kitchen mat
\$30-\$40

50

A Japanese Shigaraki ware bowl
d.420mm
\$30-\$50

51

A Japanese horn Ikebana wall vase
\$30-\$50

52

A Japanese Tatami mat 900 x 1800mm
\$50-\$100

53

A Japanese Taisho period persimmon wood three piece isho-dansu (clothing chest) with two large cupboards and two small cupboards above numerous drawers of various size
h.1600mm w.1800
\$2000-\$3000

54

A Two piece Tashio period paulowina and cedar mizuya (kitchen chest) with sliding panelled cupboards and small drawers
h.1600mm w.1200mm
\$800-\$1000

55

A Meiji period isho-dansu (clothing chest)
w.1040mm h.880mm
\$500-\$800

56

A Taisho period paulowina isho-dansu (clothing chest) with four full width drawers above two small drawers
w.880mm h.1000mm
\$400- \$800

57

A Meiji period paulowina choba-dansu (merchant's chest) with sliding panelled cupboards above small drawers
\$400-\$600

58

An early Meiji period black lacquer two piece isho-dansu (clothing chest) with three drawers above a small drawer and cupboard with forged iron handles and decorative face plates
w.880mm h.1040mm
\$800-\$1200

59

A Meiji period paulowina choba-dansu (merchant's chest) with hinged top above sliding panelled cupboards and small drawers
\$600-\$800

60

A Taisho period paulowina chest
h.280 w.1600mm
\$80-\$120

61

A late Meiji period paulowina and hinoki wood mizuya (kitchen cabinet) with numerous small drawers and sliding panelled cupboards
\$1400-\$1800

62

A Late Meiji period paulowina and hinoki wood mizuya with sliding panelled cupboards above small drawers h.1200mm w.1600
\$750-\$1000

63

A Japanese hall table with shelf to the bottom section, extensively carved with naturalistic tree forms w.920mm h.840mm
\$150-\$350

64

A pair of hibachi
\$60-\$80

65

A pair of hibachi
\$60-80

66

Japanese pottery sake bottle
\$20-\$40

67

Three Japanese pottery sake bottles
\$20-\$40

68

Two small Japanese display stands
\$20-\$40

69

An Edo period suit of armour: Comprising Kabuto (helmet) menpo (face guard), do (torso armour) Sendan-no-ita (shoulder plates) and kote (armoured sleeve) with attached tekko and suneate (leg guards) The suit brown lacquered with later painted interlocking Mōn design to the do
Housed in a paulowina box
\$5000-\$7000

70

A Japanese Edo period black lacquer hara ate (half suit) of samurai body armour covering breast plate and back region 480 x 370mm
\$400-\$800

71

A Japanese Edo period forged blackened metal hara ate (half suit) of samurai armour
420 x 420mm
\$400-\$800

72

A Japanese armrest
\$30-\$40

73

A Japanese scroll painted with an alpine cat
\$200-\$300

74

A Japanese scroll painted with bamboo
\$50-\$80

75

A Chinese scroll painted with two heavenly goddess figures and an immortal
\$30-\$50

76

Two Japanese scrolls with calligraphic script
\$20-\$40

77

Two Tibetan horn seed flasks
\$100-\$200

78

A Dyack Parang (head hunters sword)
Carved bone handle with a figure riding a mythical beast. Replaced blade and later scabbard 1.680mm
\$100-\$200

79

A North American Indian beaded bag 1.230mm
\$20-\$40

80

A Renal island shell trumpet 1.340mm
\$50-\$80

81

A Japanese Gizo stone, well weathered with carved image of a seated Buddha
\$150-\$250

82

A collection of three small Japanese glass fishing floats with original rope binding
\$80-\$120

83

A collection of four small Japanese glass fishing floats with original rope binding
\$100-\$150

84

Three Japanese tea bowls
\$20-40

85

Three Japanese tea bowls
\$20-40

86

Three Japanese tea bowls
\$20-\$40

87

Two Japanese pottery bowls and a pickle dish
\$20-\$40

88

Two Japanese tea bowls and one small bowl
\$20-40

89

Two Japanese rice paper fans
\$20-\$40

90

A Japanese abacus and a collection of 10 Japanese texts
\$20-40

91

A Japanese Tetsubin (cast iron teapot)
circa 1930
\$80-\$120

92

A Japanese Tetsubin (cast iron teapot)
circa 1930
\$80-\$120

93

A Japanese Tetsubin (cast iron teapot)
circa 1930
\$80-\$120

94

A Japanese Tetsubin (cast iron teapot)
circa 1930
\$80-\$120

95

A Japanese Tetsubin (cast iron teapot)
circa 1930
\$80-\$120

96

A Japanese cast iron sake warming pot
circa 1930
\$80-\$120

97

A Japanese Tetsubin (cast iron teapot)
circa 1930
\$80-\$120

98

A Japanese red lacquer kimino stand
\$100-\$200

98a

A Japanese bronze temple Koro
\$100-\$200



99

A Large Neolithic axe head excavated from a site on the island of Crete 4000BC mounted in a stand with wooden plinth base
l.310mm w.140mm
\$1000-\$1500

100

A large and impressive pair of Chinese carved white marble lion dogs each raised on a rectangular plinth
h.800mm w.400mm
\$6000-\$8000

African and Oceanic Art from the Sulu Collection and other properties

101

A Lega mask the oval face with pierced eyes accentuated with white pigment and with attached vegetal fibre to the chin l.520mm
Provenance: From the collection of Moses Asch, New York
\$500-\$1000

102

A Makonde helmet mask of hollowed oval form with open mouth baring teeth beneath the broad nose and oval eyes w.280mm
Provenance: Collected by a German merchant seaman in the 1940's
\$450-\$650

103

A Makonde helmet mask similar to the above w.240
Provenance: as above
\$450-\$650

104

A small Baule Figure h.210mm
\$40-\$60

105

A Yourba Figure, female form standing with hands to abdomen h.450mm
\$50-\$100

106

An Ashanti akuaba figure, female form with elongated neck and protruding abdomen and with disc shaped head, scarification to the upper section of the thighs raised on an ebonised plinth
Provenance: From the collection of Moses Asch New York
H.360mm
\$400-\$800

107

A good Dan mask of oval form with almond slit eyes above a small nose and slightly parted lips and with ridged form forehead
The face framed by red and blue trade beads and bound cloth with sixteen attached brass bells
Provenance: From the collection of Moses Asch New York
\$800-\$1200

108

An Angola Chokwe mask h.220mm
\$150-\$250

109

An Ivory Coast Guro mask h.360mm
\$100 -\$200

110

A Lega mask pigment painted with small slit mouth and protruding nose and with pierced disc form eyes h.240mm
Provenance: From the collection of Moses Asch New York
\$500-800

111

A Fon Fetish Figure. The small finely carved figure with inset eyes encased in a woven buddle of cob webs and trade cloth with prong form base. h.410mm
Provenance: From the collection of Moses Asch New York
\$300-600

112

A Fang door plague with two conjoined masks modelled in relief. L.410mm
\$100-\$200

113

A Yoruba Headdress, with elongated neck the face with traces of pigment resting on a conical base h.310mm
Provenance: From the collection of Moses Asch New York
\$350-\$500

114

An Ivory Coast bas door lock modelled in the form of a Lizard. L.650mm
Provenance: From the collection of Moses Asch New York
\$500-\$800

115

A fine Dan mask of classical hollowed oval form with pointed chin, with pierced slightly open mouth beneath the protruding naturalistic nose and pierced disc eyes
Traces of original pigment paint evident early 20th century h.270mm
Provenance: From the collection of Moses Asch New York
\$800-\$1200

116

An Ivory Coast Senufo bas door lock similar to the above
L.630mm
\$500-\$800

117

A Chokwee Figure
h.410mm
\$150-\$250

118

A Chokwee helmet mask
h.250mm
\$250-\$350

119

A large Dan mask of convex oval form with open mouth beneath the naturalistic nose and with pierced disc eyes with fibre headdress with attached cowrie shells
L.485mm
\$400-\$600

120

A pair of Yoruba Ibeji twin figures, the male and female figure each standing on a circular base with hands to the sides, striated upswept coiffure with indigo pigment
h.330mm
\$250-\$350

121

A Luba Hembra zither, surmounted by a small female figure, strings absent
l.610mm
\$50-\$100

122

A Sunufo figure, the standing female form with mouth open baring teeth and with striated upswept coiffure h.720mm
\$100-\$200

123

A Dan mask with open mouth below a broad nose and slit eyes and with braided fibre hair
l.300mm
\$150-\$250

124

A Congo Mangbetu harp with hide covering surmounted by a figure
l.580mm
\$150-\$250

125

A large Nigerian figure seated with striation to the abdomen and coiffure, holding a canopy
h.670mm
\$600-\$800

126

A Dan Figural rice spoon
l.380mm
\$200-\$250



115



I27

A Luba Tableau surmounted by a male and female figure 330mm x220mm
\$250-\$350

I28

A Tabwa headrest modelled as a crouching figure h.170mm
\$250-\$350

I29

A Luba Upemba Divination statuette with carved female figure with hands holding her breasts symbolising fertility mounted on a gourd with hand woven jute twine adorned with feathers
 Provenance: From the collection of Professor Lowell Collins
\$200-\$300

I30

An Ivory Coast Baule dance mask l.360mm
 Provenance: From the collection of Professor Lowell Collins
\$400-\$600

I31

A Luba Vile Figure h.210mm
 Provenance: From the collection of Professor Collins
\$200-\$300

I32

A Luba Mboko Figure h.330mm
 Provenance: From the collection of Professor Collins
\$200-\$300

I33

A Dogon Granary door carved with repeating figures in relief 900 x 480mm
\$500-\$800

I34

A Tabwa ancestor figure.
 Provenance: Collected in the early part of the 20th century, from the collection of Professor Collins h.340mm
\$200-\$300

I35

A Bayu ancestor figure caved standing with hand to chin h.220mm
 Provenance: Collected along with previous lot in the early part of the 20th century
 From the collection of Professor Collins
\$200-\$300

I36

An Ivory Coast Yaure mask hollow oval form with zig zag motif framing the chin arched brows with slit half closed eyes, the elaborate coiffure forming three arches l.450mm
\$200-\$300

I37

A rare Kuba mask, helmet form the cloth covered hide face with applied wood nose and mouth, sewn extensively with coloured beads and cowrie shells and with woven raffia head with broad bands of cowries h.310mm
\$1500-\$2000

I38

A Chokwe ritual figure h.230mm
\$200-\$300

I39

An African Gidoki doll wrapped in fabric and with shell eyes, probably early 20th century l.350
\$100-\$200

I40

A Congo Nkisi Nkondi power figure standing on a rhomboid shaped base with oval shaped head with inset glass eyes with mouth open with prominent teeth
 The torso with iron nails amongst cloth and straw filled applied balls
\$500-\$800

I41

A Baule heddle pulley mounted on an ebonised stand h.240mm
\$180-\$240

I42

A Luba Hemba female figure h.260mm
\$400-\$600

I43

A Dan mask with ridged forehead and pierced circular disc eyes.The lower jaw modelled as a separate piece and attached by a woven fibre cord h.310mm
\$200-\$300

I44

An Ibibio tribal mask the carved stylised face with square eyes and slit mouth l.300mm
\$200-\$300

I45

A Large carved Pende mask with open mouth barring teeth beneath a broad nose and narrow slit eyes l.480mm
\$350-\$450

I46

A Fang mask of hollowed elliptical form with protruding cubistic facial features with small mouth and pierced conical eyes l.310mm
\$350-\$500

I47

A Dan mask with open mouth beneath a broad nose and with pierced eyes l.240mm
\$150-\$250

I48

An unusual Ivory Coast Bundugu tribe Funerary Fetish doll.The figure stands defiantly holding a spear and torch with circular disc eyes and mouth open baring teeth.Colonial influence evident in the figure's appearance in regard to the cloth cape, cloth leggings and grass skirt h.800mm
 Provenance: Private collection Auckland, Purchased Lawson's Tribal Art sale Sydney, Lot 500. Illustrated on the front cover of the Lawson's catalogue
\$800-\$1200

I48a

A large and impressive Fijian Lau group region tapa cloth with patterns of fish spines and geometric shapes in black and brown contrasted against the ecru white of the fibrous white masi cloth
 Early 20th century
\$5000-\$8000

I49

A Solomon islands paddle club
 L. l 230mm
\$100-\$200

I50

A good 19th century Fijian Kiakavo club (ceremonial club) Hard wood, with spurred head with underside carving. Good overall patination evident L.900mm
 Provenance: Originally collected by William Beaumont the captain of the Ovalau circa 1894-1907, Dougall Stevenson collection
 Jeff Hobbs Collection
\$1500-\$2000

I51

A 19th Century Fijian Vunikau club (root head club) with shell carved grip section L.1090mm
\$1000-\$1500

I52

A New Caledonian hardwood club with mushroom form head L.960mm
 Provenance:The Wallace collection
\$800-\$1200

I53

A Solomon Islands Malita club L.850mm
 Provenance:The Beaumont collection
\$800-\$1200

I54

An Eastern Polynesian headrest
\$20-\$40

I55

A Samoan war club l.770mm
\$200-\$400

I56

A Santa Cruz paddle.The blade decorated with a stylised human form l.1760mm
\$1200-\$1500

I57

A Tongan hand club l. 500mm
\$500-\$800

I58

A Solomon islands Malatia club l. l 100mm
\$200-\$300

I59

An Australian aboriginal club, the discoid lenticular stone head attached to a wooden shaft with shagreen type wrapping Cape York, Queensland costal region
\$1000-\$1500

I60

A large Papua New Guinea Sepik river region totem pole carved with two figures surmounted by a frigate bird with painted pigment decoration h.2500mm
\$1800-\$2500

I61

A Tongan food bowl of typical pastille shape with flared legs at the opposing ends l.920mm
\$400-\$800

I62

A Congo Chief's staff the upper section carved with a Janus face, one typically bearded the other not symbolising the past and the future and with a carved female face to the lower section l.720mm
\$200-\$300

I63

A Cook Islands Mangaia ceremonial turret adze with sedimentary black stone blade attached with traditional finely plaited sennit fibre cord
The turret extensively carved with incised geometric patterning. The stone blade loose in the mount and exhibiting trauma chips
h.480mm
\$5000-\$6000

I64

A Cook Islands Mangaia Ceremonial turret adze, sennet fibre cord binding absent
h.500mm
\$600-\$1000

I65

A Large Tongan river canoe
\$4000-\$5000

I66

A Papua New Guinea painted battle shield, Mt Hagan region, Waghi valley curved shape with triangulated lime patterning, vertically woven detail to the crest
h.1340mm
\$250-\$400

I67

A Papua New Guinea breastplate woven with upper fibre section to fit across the shoulders
Mid 20th century
\$300-\$400

I68

A Papua New Guinea pectoral headdress with incorporated cowrie shells and pigs tusks with wide fringe of cassowary feathers to the base
\$300-\$400

I69

A Papua New Guinea Sepik river region carved wood and pigment painted shield
580 x 230mm
\$100-\$200

I70

A Papua New Guinea slit drum
\$40-\$80

I71

A large decorative Papua New Guinea Sepik river region mask, pigment painted the open mouth with protruding tongue framed by cowrie shells below a broad nose with boar's tusks, the forehead and eyebrows inlaid with numerous cowrie shells
h.840mm
\$250-\$350

Chinese and Japanese art from the collection of the late DR Harold Collinson and other vendors.

Dr Harold Collinson was a well known collector of Asian art in Auckland in the 1970's and 1980's His collection was wide ranging covering Chinese and Japanese ceramics, bronze, jade, snuff bottles and glass.

Together with his wife Joan he made many trips to Hong Kong, America and to China in his pursuit of Asian art works.

A number of the lots that follow were collected on these overseas trips.

I72

A Japanese Meiji period bronze dish decorated in iroe takazogen (different coloured metal relief decoration) with an oni with wild flowing hair wearing an intricately decorated robe floating in space above a bound lacquer container and with large chrysanthemum flowers to the boarder
d.180mm
\$350-\$600

I73

A Japanese Meiji period bronze dish decorated in iroe takazogen with a mother and child leading an ox bearing a heavy load of cut branches with Mt Fuji to the background
d.180mm
\$250-\$350

I74

A Bronze 19th century Thai Buddha figure seated in dhyanasana wearing a dhoti with right hand in the abhaya mudra and left hand holding a bowl together with an Indian Buddha figure seated on a Naga throne
\$100-\$200

I75

A 19th century Indian bronze figure of a female bodhisattva, standing with right hand in the vitarka mudra
h.250mm
\$250-\$400

I76

A 19th century Nepalese bronze figure of a bodhisattva standing on a lotus throne holding an offering bowl in front of a raised mandorla
h.240mm
\$200-\$300

I77

A 19th century Chinese bronze Buddha figure standing on a plinth with hands together in an offering of prayer
h.210mm
\$200-\$400

I78

A collection of three miniature Buddha figures
\$30-\$50

I79

A Northern Song style Cizhou vase, baluster shape with slender neck and everted rim
The sides with evenly carved vertical ribs radiating from the shoulder incised through the black brown glaze
260mm
\$200-\$300

I80

A Peking Glass snuff bottle with blue glass overlay depicting two kylin h.70mm and with green jade stopper
\$40-\$60

I81

Chinese milk glass snuff bottle painted with a sage being offered tea and the reverse with two figures at a well framed by flower heads and scrolling tendrils together with a cloisonné snuff bottle.
\$40-\$60

I82

Chinese porcelain snuff bottle with incipient taotie mask and ring handles, a green glass snuff bottle and a porcelain snuff bottle painted with flowers
\$40-\$60

I83

Three small Yi-hsing teapots
\$40-\$80

I84

Three small Yi-hsing teapots
\$40-\$80

I85

Two Yi-hsing teapots
\$40-\$80

186

Three Yi-hsing teapots

\$40-\$80

187

A Chinese jade belt hook in the form of ryi sceptre with a dragon head terminal and a stalking dragon carved in relief

l.100mm

\$100-\$150

188

A Chinese celadon jade belt hook in the form of ryi sceptre with a dragon head terminal and a stalking dragon carved in relief

l.100mm

\$100-\$150

189

A Chinese jade sword hilt guard carved in low relief with a stalking kylin

\$100-\$150

190

Ivory ojime bead carved in the form of a horse

\$50-\$100

191

A carved ivory moth the wings inlaid with tortoiseshell and with mother of pearl inset eyes (one absent)

l.40mm

\$100-\$150

192

A Chinese jade cong

h.30mm

\$20-\$40

193

A Chinese celadon glazed teapot

\$50-\$100

193a

A Large Chinese carved stone Buddha head raised on a forged iron stand

\$1800-\$2400

194

A large 16th century Sawankalok lidded jarlet decorated in underglaze blue in alternating panels with stylised floral decoration and a cross hatched pattern

d.170mm

\$200-\$300

195

A 16th century Sawankalok lidded jarlet together with a 16th century celadon glazed funerary jar and a 16th century Annamese jarlet

\$200-\$300

196

A pair of Chinese 18th century jarlets painted with stylised floral decoration together with a pair of 19th century blue and white bowls painted in under glaze blue and white, the exterior with a stylised wave pattern and the interior painted with fish

d.120mm

\$150-\$250

197

A Northern Sung style celadon glazed bowl incised with a lotus pattern together with a celadon glazed bowl moulded with fish to the well and a celadon glazed bowl

\$150-\$250

198

A Northern Sung style celadon glazed bowl decorated to the well with an incised lotus pattern

d.220mm

\$200-\$300

199

A Ming pottery storage jar with lug handles to the shoulder

h.160mm

\$80-\$120

200

A pair of Japanese Meiji period silver wire cloisonné vases each of ovoid shape with a slender neck decorated with profuse floral decoration with a bird nesting on a branch on a midnight blue ground

h.190mm

\$200-\$300

201

A Southern Song dynasty style Quigbai meiping vase moulded with scrolling lotus flowers

h.220mm

\$100-\$200

202

A pair of Late Ching Peking glass bowls with scrolling floral decoration in overlaid green glass on a milky white ground, one bowl cracked

d.160mm

\$100-\$200

203

A provincial Chinese 19th century carved and painted figure of a magistrate

h.230mm

\$100-\$200

204

A Northern Song celadon glazed cup incised with a flower head to the interior

d.95mm

\$80-\$120

205

A Chinese cloisonné lidded vase with dragons pursuing a flaming pearl of wisdom

h.220mm

\$50-\$100

206

Two Japanese Meiji period blue and white painted bottle vases and a sake bottle

\$50-\$100

207

A Japanese Nabeshima plate painted with bundles of wheat and prunus flowers

d.220mm

\$200-\$250

208

A 19th century Chinese blue and white painted teapot with pierced wooden lid and lug handles to the shoulder together with another Ching dynasty style cackle glaze blue and white teapot

\$125-\$250

209

A 19th Chinese Imari meiping vase painted in panels with flowers and birds alternating with panels of mythical Ho Ho birds in flight framed by vertical bands with an alternating diaper, scale and floral pattern

h.300mm
\$300-\$500

210

A Chinese baluster vase turquoise glazed with incised lotus flower decoration

h.250mm

\$100-\$200

211

A Japanese hard wood carved model of Gama-Sennin and his toad
The sage figure stands balanced on one leg on top of the toad pulling coins from the toad's mouth

h.480mm

\$250-\$400

212

A large Canton Famile rose jardinière and matching vase painted in panels with figures and floral decoration

\$100-\$200

213

A Pair of Blanc de chine Lion dogs one with cub and the other with brocade ball, each raised on a rectangular plinth

h.330mm w.150mm

\$100-\$200

214

A Japanese export ware Kutani moustache cup and a Kutani cup and saucer

\$20-\$40

215

A Chinese lithograph entitled "A Distiller"
The plate taken from the book 'Eighteenth century views of China'

320 x 240mm

\$30-\$80

216

A Chinese baluster vase with cylindrical neck and flaring rim incised under the rich yellow glaze with dragons pursuing a flaming pearl of wisdom
The neck incised with lotus flower heads and scrolling tendrils

Painted Ming dynasty Hung-chih reign mark to the base but of later date

h.380mm

\$300-\$500



38



177



176



179



203



211



172



194



229



221



174



200



173



195



217

A Tang dynasty style vase of ovoid shape with slender neck, sancai glazed with dragon handles modelled in high relief
h.360mm
\$100-\$200

218

A Tang style sancai glazed pottery dragon
w.430 h.400mm
\$400-\$600

219

A Song dynasty style bottle vase the neck terminating in a stylised phoenix head, mat green glazed with under glaze incised floral decoration
h.300mm
\$300-\$500

220

A Tang style sancai glazed vase of baluster shape decorated with applied flower heads and six dragons modelled in high relief
h.300mm
\$250-\$350

221

A Tibetan bronze figure of the Buddha Amitayus, the Buddha of longevity
Cast in a typical seated posture with legs crossed in dhyanasana wearing a crown with and hands together in meditation mudra
Early 20th century
h.110mm
\$300-400

222

A Ming dynasty style Blanc de chine (te hua ware) figure of the Bodhisattva GuanYin modelled seated on a double lotus throne with right hand in the abhaya mudra and left hand holding a ryui sceptre
He-chazong seal mark
h.250mm
\$300-\$500

223

A Chinese northern wei style terracotta horse and rider
h.270 w.230mm
\$150-\$250

224

A set of three Sui dynasty style pottery musician figures on horseback
Each w.230 h.270mm
\$500-\$600

225

A Tang dynasty style sancai glazed pillow modelled in the form of a recumbent tiger
l.310mm
\$250-\$350

226

A Guan Yao style celadon ice glaze porcelain bowl
d.200mm
\$200-\$300

227

A Qing dynasty tea dust glazed vase of baluster shape with handles to the shoulder with captured rings
h.220mm
\$250-\$350

228

A Shang dynasty style bronze head with green variegated surface patination
l.430mm
\$200-\$300

229

A Northern Song dynasty style meiping vase, white glazed
h.270mm
\$250-\$350

230

A Blanc de chine (te hua ware) porcelain ewer with incised lotus decoration
h.180mm
\$100-\$200

231

A Japanese Showa period blue and white vase painted with figures and pagodas beside a river signed to the base, complete with original box
h.270mm
\$150-\$250

232

A Large Chinese Ming dynasty style court attendant figure, sancai glazed, modelled standing holding an offering tray raised on a plinth base
h. 750mm
\$400-\$600

233

A Chinese warring states style bronze sword with green variegated surface patination
l.540mm
\$200-\$300

234

A 19th century South East Asian pottery vase ovoid with brown glaze with incised under glaze decoration to the shoulder
h.340mm
\$300-\$400

235

A Chinese 18th century provincial storage jar; ovoid with brown glaze and lug handles to the shoulder
h.320mm
\$400-\$500

236

A large South East Asian vase with lug handles to the shoulder
\$100-\$200

237

A pair of Thai wood carved temple figures decoratively painted, standing with hands pressed together in prayer
h.1500mm
\$350-\$600

238

A Japanese Kotatsu (heater table) together with an earthenware pot
\$125-\$175

239

Chinese carved wood tableau
Of children playing blind man's bluff, the five children carved in boxwood set on a teak plinth
w.270mm
\$400-600

240

Chinese jade 'mountain'
Caramel and mutton fat colours, carved in low relief with an alpine landscape with ancient pine tree and figures under a cloudy moon
w.113mm
\$300-400

241

Small pale – white jade single handled cup
Carved with fluted walls
h.36mm
\$100-200

242

Chinese jade handling piece of a goose.
Compactly carved with it's head turned back to preen it's back feathers
w.55mm
\$100-200

243

Porcelain lidded Meiping vase
Painted with koi carp and lotuses
Ming Chenghua reign mark but later
h.190mm
\$200-300

244

Asian book written on bamboo slivers
\$90-110

245

Asian book written on bamboo slivers
\$90-110

246

A Japanese Inlaid Lacquer tray 300 × 300mm
\$40-\$80

247

A framed Japanese scroll painted with a bodhisattva and other figures
\$50-\$100

248

A large and decorative Nepalese reclining Buddha figure
w.1400mm
\$1500-\$2000

2

New Collectors Art

Thursday 25 October 2007 at 6.30 pm

Lots 1 - 138

Pages 23 - 55

VIEWING

Friday	19 October	9am – 5pm
Saturday	20 October	11am – 4pm
Tuesday	23 October	9am – 5pm
Wednesday	24 October	9am – 1pm

Note: Sunday 21 and Monday 22, gallery closed

Enquiries Ben Plumbly, ben@artandobject.co.nz 021 222 8183

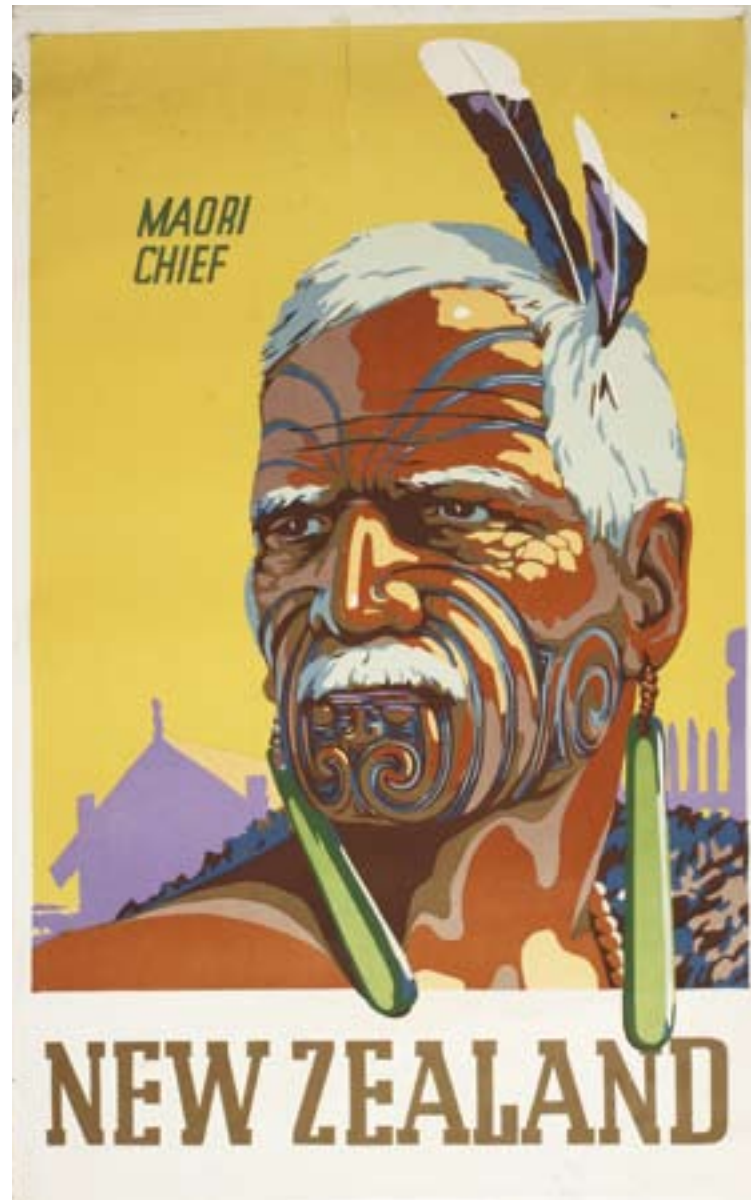
ART OBJECT

THE 21st CENTURY
AUCTION HOUSE

3 Abbey Street, Newton
PO Box 68 345, Newton
Auckland 1145, New Zealand
Phone +64 9 354 4646
Freephone 0800 80 60 01
Facsimile +64 9 354 4645
info@artandobject.co.nz
www.artandobject.co.nz



- 1** | Artist Unknown
Fighting the Black Marlin: Bay of Islands
 screenprinted poster
 title inscribed on the plate
 1010 x 633mm
\$2500 - \$4000



- 2** | Artist Unknown
Maori Chief: New Zealand
 screenprinted poster
 title inscribed on the plate
 1010 x 633mm
\$2500 - \$4000



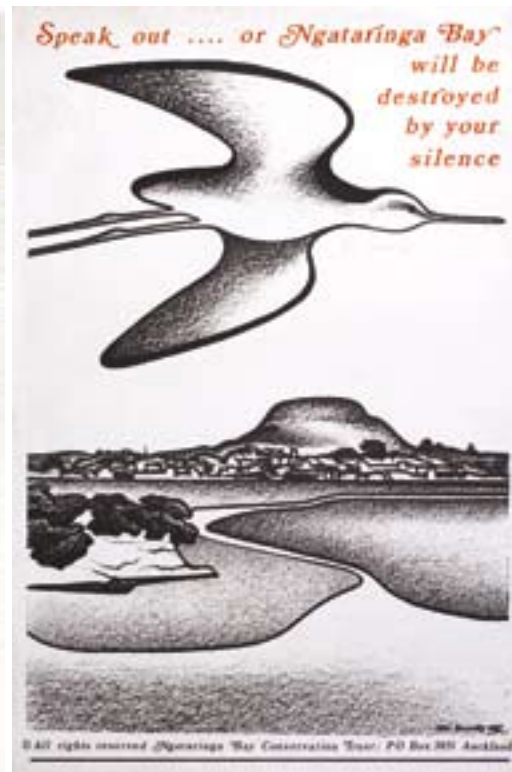
- 3** | New Zealand Tourist and Publicity Department
Milford Sound, Fiordland National Park
 chromolithograph
 title inscribed and dated 1962 on the plate
 1005 x 625mm
\$400 - \$600



- 4** | Marcus King
 for New Zealand Pictorial Publications
Glow Worm Grotto, Waitomo Caves
 screenprinted poster
 title inscribed and signed on the plate
 940 x 635mm
\$600 - \$900



5 | New Zealand Tourist and Publicity Department
 Mount Sefton, Mount Cook National Park
 chromolithograph
 title inscribed and dated 1962 on the plate
 1005 x 625mm
 \$400 - \$600



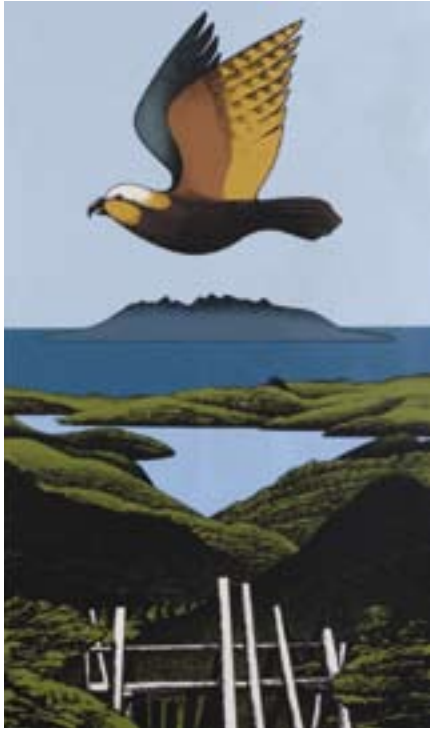
6 | Don Binney
 Speak out... or Ngataranga Bay will
 be destroyed by your silence
 screenprinted poster print
 signed and dated 1972 on the plate
 750 x 500mm
 \$400 - \$600



7 | Pat Hanly
 Keep Ngataranga Bay Natural
 screenprinted poster print
 signed and dated '72 on the plate
 665 x 500mm
 \$500 - \$800



8 | New Zealand Tourist and Publicity Department
 Queenstown, Lake Wakatipu
 chromolithograph
 title inscribed and dated 1962 on the plate
 1005 x 625mm
 \$400 - \$600



9 | Don Binney
Kaiarara Kaka, Great Barrier
 screenprint, 29/150
 title inscribed, signed and dated 1982
 740 x 550mm
 \$3000 - \$4000



10 | Bill Hammond
Smoking
 colour lithograph, 8/24
 title inscribed, signed and dated 1982
 560 x 425mm
 \$1500 - \$2500



11 | Pat Hanly
New Order Woman
 screenprint, 15/31
 title inscribed, signed and dated '88
 795 x 660mm
 \$3000 - \$4000



12 | Max Gimblett
Untitled
 acrylic and graphite on paper
 signed and dated '77
 755 x 560mm
 \$3000 - \$4000



13 | Wayne Seyb
Untitled – Two Figures
 oil on board
 signed and dated '91
 1175 x 1170mm
\$1500 - \$3000



14 | Ian Scott
Lattice No. 118
 acrylic on canvas
 title inscribed, signed
 and dated 1986
 1145 x 1145mm
\$4000 - \$6000



15 | Jeffrey Harris
Cross
 pastel on paper
 signed and dated 2001
 300 x 400mm
\$2500 - \$3500



16 | Jeffrey Harris
Two Crosses
 pastel on paper
 signed and dated 2001
 300 x 400mm
\$2500 - \$3500

17 | Peter Cleverley
Full of Wonder
 oil on canvas
 title inscribed, signed
 and dated Kakanui 1998
 402 x 1015mm
\$1500 - \$3000

18 | Dick Frizzell
Sockeye (Red)
 screenprint, 9/50
 title inscribed, signed and dated 24/2/78 and
 inscribed *from the will to love on the plate*
 590 x 775mm
\$2000 - \$3000

19 | Gretchen Albrecht
Atoll
 lithograph, 17/40
 title inscribed, signed
 and dated 2002
 575 x 762mm
\$2500 - \$3500



20 | Trevor Moffitt
View of the Coast
 oil on board
 signed and dated '90
 390 x 470mm
 \$3200 - \$4000



22 | Tom Esplin
Billbury Cotswolds
 oil on board
 signed; title inscribed on original **Tom Esplin artist** label affixed verso
 265 x 325mm
 \$5000 - \$8000



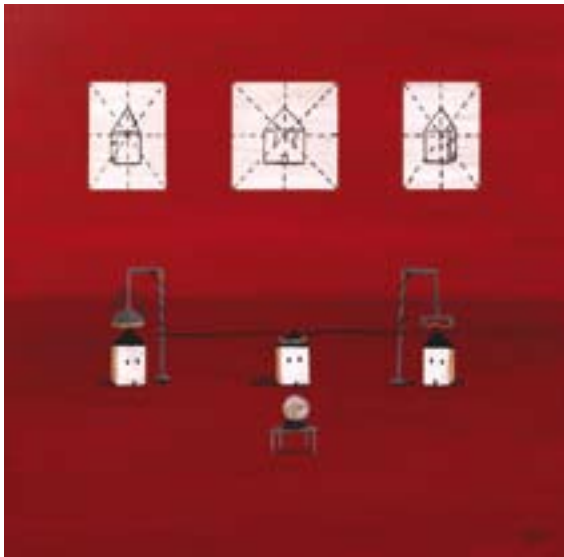
23 | Pat Hanly
Golden Age
 screenprint, 35/70
 title inscribed, signed
 and dated '80
 550 x 610mm
 \$3500 - \$4500



21 | John Pule
Noono & Lā Tokotaha
 woodcut, 6/14
 title inscribed and signed
 415 x 760mm
 \$1200 - \$1800



24 | Kathryn Madill
The Messenger
 acrylic and pastel on paper
 title inscribed, signed and
 dated 1996
 202 x 575mm
 \$1800 - \$2800



- 25** | Sally Papps
Taking the Plunge
 acrylic on board
 signed with artist's initials S.P.;
 artist's original label
 affixed verso
 585 x 590mm
\$1500 - \$2500

- 26** | Sally Papps
Mind Reader
 acrylic on board
 signed with artist's initials S.P.;
 artist's original label
 affixed verso
 585 x 590mm
\$1500 - \$2500

- 27** | Dick Frizzell
Red Haring
 screenprint, 33/50
 title inscribed, signed
 and dated 2001
 770 x 580mm
\$1500 - \$2500

- 28** | Dick Frizzell
Mr 4 Square
 screenprint, 30/50
 560 x 440mm
\$1500 - \$2500

- 29** | Peter Siddell
A View of the City
 acrylic on paper
 signed
 163 x 120mm
\$800 - \$1400

- 30** | Terry Stringer
Nude Study
 pastel on paper
 signed and dated 1997
 565 x 380mm
\$700 - \$1000



31 | Allen Maddox
Abstract Study with Crosses
 acrylic and pastel on paper
 signed with artist's initials *A.M.*
 and dated 1.95
 417 x 290mm
\$1200 - \$2000



32 | John Weeks
Still Life with Fruit
 oil on board
 signed
 253 x 195mm
\$2000 - \$3000



33 | Emily Karaka
Father and Son
 oil on board and hessian with
 collage
 title inscribed, signed
 and dated '81
 1050 x 827mm
\$2000 - \$3000



34 | Nigel Brown
Lemon and Dog Day
 colour lithograph, 83/84; green
 edition 8/10
 title inscribed and signed
 430 x 523mm
\$600 - \$900



35 | Dennis Knight-Turner
Surrealist Landscape with Rocks
 watercolour
 signed and dated '58 and inscribed
13
 345 x 550mm
\$1200 - \$2200

36 | Jan Nigro
The Bull
 watercolour
 signed and dated '64
 256 x 363mm
\$500 - \$800

37 | Dennis Knight-Turner
Curly Horned Profile
 ink and watercolour on card
 title inscribed, signed and dated 1952 on
 artist's original label affixed verso
 217 x 295mm
\$400 - \$600

38 | Dennis Knight-Turner
Goat Head No. 11
 ink and bodycolour on card
 signed and dated '52 and inscribed *No. 11*; title
 inscribed, signed and dated on artist's original
 label affixed verso
 237 x 351mm
\$300 - \$600

39 | Elise Maurant
View from Howick, Auckland
 oil on board
 signed; title inscribed verso
 400 x 470mm
\$1500 - \$2500

40 | Helen Brown
The Old House
 oil on canvas
 signed and dated '74
 500 x 607mm
\$2000 - \$3000



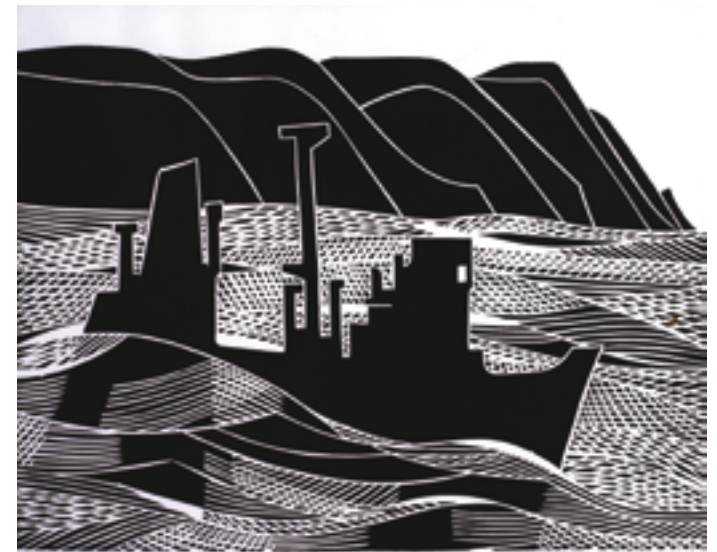
41 | Tony Lane
Polyptych in Four Parts
 pastel on paper
 signed
 678 x 1260mm
 \$1200 - \$2000



42 | Tony de Lautour
Ghost Rider Showdown with the Enforcer
 acrylic, collage and varnish on board
 title inscribed and signed verso
 310 x 1300mm
 \$1000 - \$2000



43 | Gavin Chilcott
Untitled - Urns
 ink and watercolour on paper
 signed and dated 1995
 550 x 750mm
 \$800 - \$1500



44 | Roy Cowan
The Coaster
 linocut, 3/20
 title inscribed, signed with
 artist's initials J.R.C., dated '71
 545 x 722mm
 \$700 - \$1200



45 | Paul Hartigan

Funny Face
screenprint, 4/25
title inscribed, signed and
dated 1979
555 x 625mm
\$600 - \$1000

46 | Stanley Palmer

Afternoon - Mangawhau
monotype, 3/5
title inscribed, signed and
dated 1987
620 x 915mm
\$1500 - \$2500



47 | Louise Henderson

Café Scene
pastel and ink on paper
signed (twice)
335 x 420mm
\$1200 - \$2200

48 | Ruth Cole

View of the Lake
oil on linen
signed and dated
signed and dated 1988 verso
1000 x 1600mm
\$2000 - \$3000



49 | Anah Dunsheath
Small Print
 acrylic on shaped board, 2004
 title inscribed and signed verso
 833 x 440 x 138mm
\$2000 - \$3000

50 | Gary Waldrom
Head with Red Cap
 acrylic on canvas
 title inscribed, signed and dated 1996
 verso
 452 x 945mm
\$2500 - \$4000

51 | Tony Lane
Woman by a Pool
 pastel on paper; diptych
 dated 4 -84; title inscribed verso; original
 Brook Gifford Gallery label affixed verso
\$1200 - \$2000

52 | Allen Maddox
Untitled
 oil on fabric
 350 x 630mm
 Provenance: From the collection
 of Stephanie Chilcott
\$1500 - \$2500



International

53 | Peter Blake

Costume Life Drawing – Yellow Hat
signed; title inscribed and inscribed *from*
a watercolour by Peter Blake
1972-1979 on the plate
425 x 220mm
\$500 - \$800

54 | Victoria Edwards

Female Nude
photolithograph, 6/50
title inscribed, signed
and dated 1975
403 x 280mm
\$150 - \$250

55 | Hayden Jarrett

Rocky Outcrop, Australia
watercolour
signed and dated '94
490 x 580mm
\$300 - \$600

56 | Hayden Jarrett

Outback Landscape, Australia
watercolour
signed and dated '94
490 x 592mm
\$300 - \$600

57 | James Walter Gozzard (British)

Morning on the Beach
watercolour and bodycolour on paper
signed with artist's initials *J.W.G.*; title printed
on original John Leech Gallery label affixed
verso
165 x 270mm
\$400 - \$700

58 | L. Maftai

Portrait of a Lady
oil on board
signed
485 x 380mm
\$500 - \$1000



Photographs

59 | Patrick Pound

Untitled – From *Proof of Limits*
digital print, 2/5
signed, dated '03 and inscribed
proof of limits verso
200 x 265mm
\$300 - \$500

60 | Patrick Pound

Untitled – From *Proof of Limits*
digital print, 3/5
signed, dated '03 and inscribed
proof of limits verso
200 x 265mm
\$300 - \$500

61 | Patrick Pound

Untitled – From *Proof of Limits*
digital print, 2/5
signed, dated '03 and inscribed
proof of limits verso
200 x 265mm
\$300 - \$500

62 | R. P. Moore

Native Village Whakarewarewa
vintage panoramic photograph
title inscribed and signed
245 x 1000mm
\$500 - \$800

63 | Panora Studio (Rotorua)

View from Mt Tarawera
gelatin silver print
title inscribed and signed
138 x 545mm
\$400 - \$800



65 | Fiona Pardington
Bloater
 gelatin silver print
 195 x 262mm
 \$500 - \$900



66 | Fiona Pardington
From One Night of Love
 gelatin silver print
 165 x 167mm
 \$1000 - \$2000



67 | Fiona Pardington
Untitled - The Kiss
 gelatin silver print
 256 x 157mm
 Illustrated: Peter Wells
The Duration of a Kiss
 (Auckland, 1994), cover
 \$1000 - \$2000



68 | Katey Pittwood
Tiki Fun
 colour photographs, triptych
 title inscribed, signed and dated
 2001
 223 x 490mm overall
 \$300 - \$500



69 | Les Cleveland
Railway Workers' Shelter at 'Siberia' on the Rimutaka Line
 gelatin silver print
 title inscribed, signed and dated 1957 and inscribed **printed 1980** verso; Les Cleveland blind stamp applied verso
 198 x 224mm
\$600 - \$900



71 | Les Cleveland
Greymouth Wharf
 gelatin silver print
 title inscribed, signed and dated 1956 and inscribed **printed 1998** verso; Les Cleveland blind stamp applied verso
 253 x 320mm
\$600 - \$900



73 | Les Cleveland
The End of the Road
 colour photograph
 title inscribed, signed and dated Dunedin 2007 verso; Les Cleveland blind stamp applied verso
 220 x 272mm
\$500 - \$800



70 | Les Cleveland
The Mortgage: A Construction
 colour photograph
 title inscribed, signed and dated 2007 verso; Les Cleveland blind stamp applied verso
 260 x 340mm
\$600 - \$900



72 | Les Cleveland
Architects Creek, Karangtua Valley, South Westland
 vintage gelatin silver print
 title inscribed, signed and dated 1959 and inscribed **vintage print** verso; Les Cleveland blind stamp applied verso
 250 x 302mm
\$600 - \$900



74 | Les Cleveland
Graffiti, Oriental Bay, Wellington
 colour photograph
 title inscribed, signed and dated 2007 verso; Les Cleveland blind stamp applied verso
 192 x 247mm
\$500 - \$800



75 | Les Cleveland

At the Pop Concert, Dunedin
colour photograph
title inscribed, signed and dated 2006
verso; Les Cleveland blind stamp
applied verso
295 x 244mm
\$600 - \$900

76 | George Chance

Stately Gums – Near Wellington
gelatin silver print
title inscribed and signed;
George Chance Camera Study
blind stamp applied verso
280 x 228mm
\$250 - \$350

77 | George Chance

Punakaiki Rocks – Westland
gelatin silver print
title inscribed and signed
280 x 220mm
\$150 - \$250

78 | New Zealand Tourist & Publicity Dept.

Stirling Falls, Milford Sound
hand-coloured photograph
title inscribed and signed and inscribed *F.T.*
Series
275 x 175mm
\$200 - \$400

79 | George Chance

Punakaiki Rocks – Westland
gelatin silver print exposed
through a textured screen
title inscribed and signed
280 x 220mm
\$200 - \$300

80 | George Chance

Old Arrowtown – Wakatipu
gelatin silver print exposed
through a textured screen
title inscribed and signed
227 x 275mm
\$200 - \$400



81 | Hall
Waikanae Beach, Bay of Plenty
 hand-coloured photograph
 title inscribed and signed
 195 x 250mm
\$100 - \$150



83 | A. McMaster
Eglinton River, Te Anau
 hand-coloured photograph
 title inscribed and signed
 298 x 375mm
\$100 - \$200



85 | Whites Aviation
Kaikoura Coast
 hand-coloured photograph
 title inscribed and signed
 290 x 368mm
\$100 - \$200



82 | A. McMaster
Mt Talbot – Upper Hollyford River
 hand-coloured photograph
 title inscribed and signed
 295 x 373mm
\$100 - \$200



84 | Artist Unknown
The Avon, Christchurch
 hand-coloured photograph
 295 x 375mm
\$100 - \$200



86 | Ellis Dudgeon
Swan Lake, Kaikoura
 hand-coloured photograph
 title inscribed and signed
 235 x 293mm
\$80 - \$140



87 John L. Moore

Turangakumu
woodcut
title inscribed and signed with
artist's initials *J.L.M.*
on the plate
86 x 115mm
\$90 - \$140

88 Nigel Brown

The Suicide of Van Gogh
etching, 19/27
title inscribed, signed
and dated
1978 on the plate; signed
183 x 153mm
\$300 - \$500

89 Nigel Brown

Bitter Fruit
lithograph, 5/10
title inscribed, signed
and dated '83
355 x 238mm
\$400 - \$600

90 John Buckland Wright

Omar Khayam 2
etching
title inscribed, signed
and dated '38
220 x 116mm
\$700 - \$1000

91 Russell Moses

Bannockburn Night Sighting
mixed media on paper
title inscribed, signed
and dated '03
412 x 297mm
\$500 - \$1000

92 Nigel Brown

A Suburban View
watercolour and acrylic
on paper
signed
437 x 437mm
\$800 - \$1400



93 | Quentin McFarlane
Little Akaloa
 acrylic on board
 title inscribed, signed
 and dated 1998
 143 x 195mm
 \$300 - \$500



94 | John Horner
View of the Harbour
 acrylic on board
 signed
 515 x 642mm
 \$400 - \$600



95 | John Horner
The Wild Coast, Kaipara
 acrylic on board
 signed and dated '98;
 title inscribed verso
 375 x 500mm
 \$300 - \$500



96 | Gail Haffern
Still Life with Salt and Pepper
 oil on board
 signed and dated '85; signed verso
 350 x 460mm
 \$500 - \$800



97 | Roger Twina
Old 'n' 'Ewe, Ohakune
 acrylic on canvasboard
 title inscribed, signed
 and dated '99
 600 x 750mm
 \$400 - \$600

98 | Dick Frizzell
Untitled
 screenprint, 30/150
 400 x 490mm
 \$800 - \$1400



99 | Pat Hanly
The Soldier: Seven Ages of Man
 acrylic, watercolour and pastel on paper
 title inscribed, signed and dated '75 and inscribed
As You Like It
 365 x 410mm
 \$5000 - \$8000



100 | Gordon Walters
Then
 screenprint, 114/125
 title inscribed, signed and dated
 1980
 570 x 765mm
 \$2000 - \$3000



101 | Robert Ellis
Rakaumangamanga
 watercolour
 title inscribed, signed
 and dated '86
 410 x 285mm
 \$2000 - \$3000



102 | John Pule
Mahalahala
 lithograph, 7/20
 title inscribed, signed
 and dated 1996
 760 x 565mm
 \$1500 - \$2500



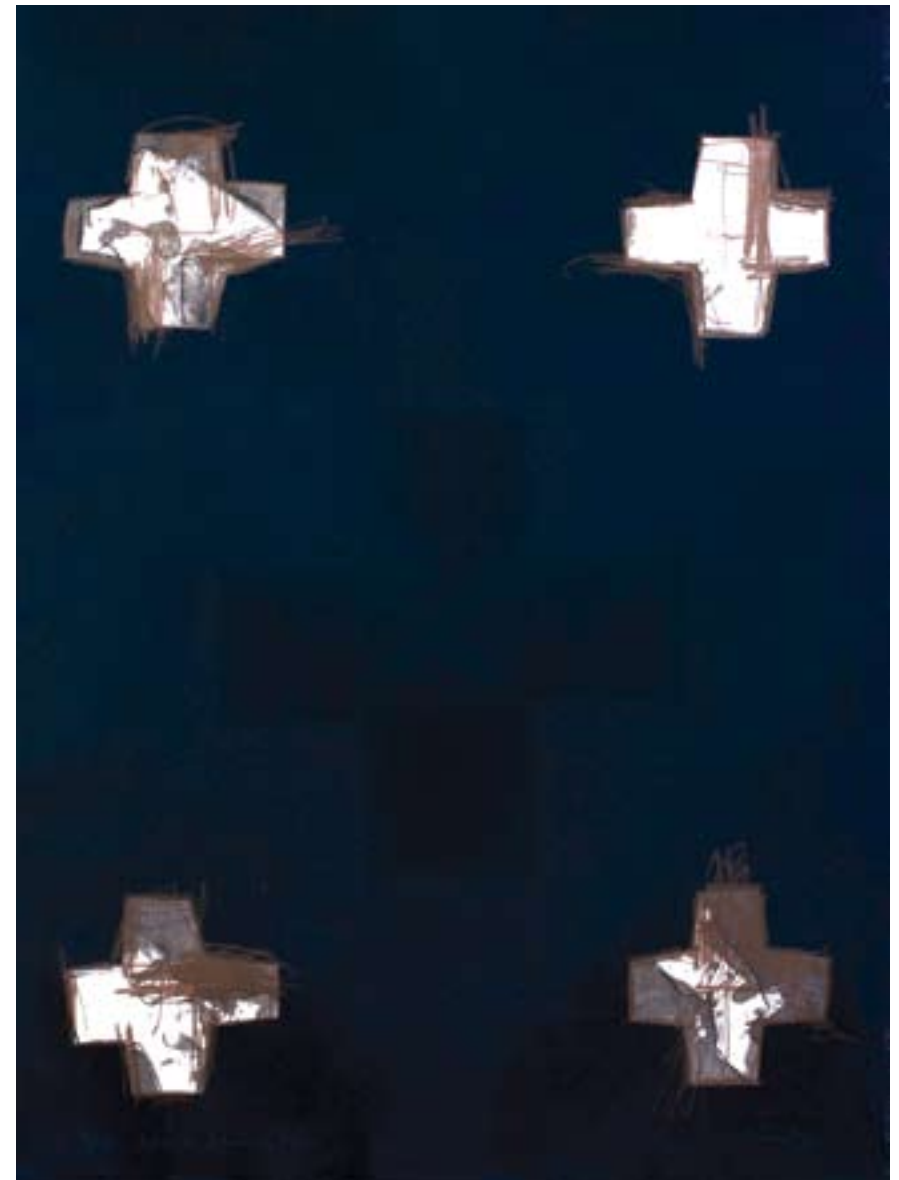
103 | Alan Taylor
Maungawhau
 oil on canvasboard
 title inscribed; signed verso
 600 x 445mm
 \$1500 - \$2500



104 | John Pule
Migration
 lithograph, 3/22
 title inscribed, signed
 and dated '95
 670 x 570mm
 \$1500 - \$2500



105 | Ralph Hotere
Tangi at Mitimiti
 lithograph, 7/11
 title inscribed, signed and dated '84 and inscribed
from a poem by Cilla McQueen
 750 x 530mm
 \$5000 - \$8000



106 | Ralph Hotere
Winter Solstice I
 lithograph, 7/18
 title inscribed, signed
 and dated '96
 750 x 568mm
 \$6000 - \$9000



107 | Gordon Walters
Rauponga
 screenprint, 22/50
 title inscribed, signed
 and dated 1983
 565 x 765mm
 \$6000 - \$9000



108 | Richard Killeen
Italo's Fish Painting
 mixed media on paper
 title inscribed, signed and dated
 May 24th 1989
 373 x 570mm
 \$4000 - \$6000



109 | Bill Hammond
Limbo Bay III
 lithograph, 35/48
 title inscribed, signed
 and dated 2001
 758 x 583mm
\$4000 - \$6000



110 | Robin White
Allan's Beach
 screenprint, 11/60
 title inscribed, signed
 and dated '77
 863 x 602mm
\$4000 - \$6000



111 | Don Binney
Pacific Frigate Bird
 screenprint from the
 Barry Lett Gallery multiples
 550 x 455mm
\$2000 - \$3000



112 | Philip Clairmont
Black Crucifixion
 screenprint, 57/90
 title inscribed
 signed and dated '81
 870 x 585mm
\$3000 - \$4000



113 | Ralph Hotere
Red on Black
 screenprint from the
 Barry Lett Gallery multiples
 540 x 425mm
\$1500 - \$2500



114 | John Pule
Pulenoa
 lithograph, 12/24
 title inscribed
 signed and dated '95
 760 x 640mm
\$1800 - \$2800



115 | Toss Woollaston
Reclining Female Nude
 watercolour
 signed
 300 x 205mm
\$4000 - \$6000



116 | Louise Henderson
Burning Forest, Ohakune
 ink and watercolour on paper,
 circa 1953
 signed
 445 x 370mm
\$3000 – \$5000



117 | Mervyn Williams
Rising Red
 acrylic on paper
 signed and dated '83
 670 x 535mm
\$3500 - \$4500



118 | Tom Mutch

New Churns North
oil on board
signed and dated '95
600 x 800mm

Illustrated: This image was used as
the poster image for *Coromandel*

Peninsula:

More Precious than Gold

\$2500 - \$4000

119 | Colin McCahon

North Otago Landscape
screenprint from the Barry Lett
Gallery multiples
430 x 540mm

\$2500 - \$3500



120 | Bill Hammond and Gavin Chilcott

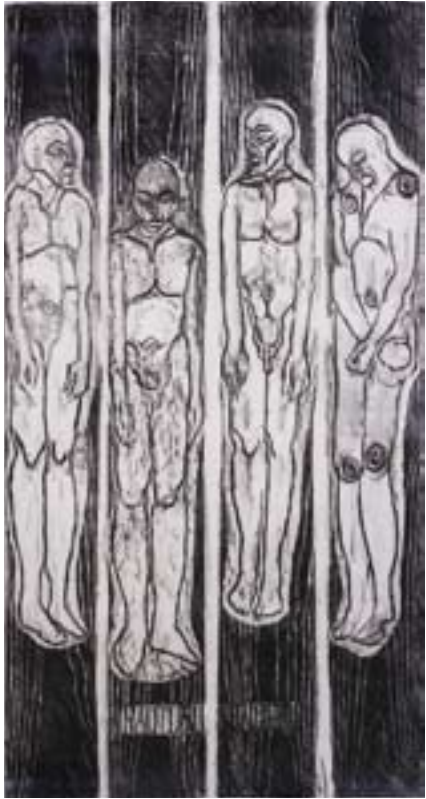
Birds, Bones and Buildings
oil on handmade recycled paper
280 x 480mm
Provenance: From the collection of
Stephanie Chilcott

\$2500 - \$4000

121 | Mary McIntyre

Disasters of Love, No. 4
oil on canvas on board
signed; title inscribed and
inscribed *Nude Hesitant*
verso

582 x 780mm
\$2500 - \$4000



I22 | Shona Rapira-Davies

Palisades: Teaching Aids for Kahurangi
frottage on paper
signed and dated 1998 and inscribed
Hauturu Hauturu 2/3
2300 x 1140mm
\$1500 - \$2500



I23 | Peggy Spicer

Rangitoto from Remuera
watercolour
signed
365 x 550mm
\$500 - \$800



I24 | Arthur A. Bender

Industrial Buildings
oil on paper
title inscribed, signed
and dated 1951 verso
215 x 293mm
\$500 - \$800



I25 | Riduan Tomkins

*Untitled –
Figures in a Doorway*
oil on linen
signed and dated '95
608 x 608mm
\$500 - \$900



I26 | Olivia Spencer-Bower

The House on the Corner
oil on board
signed with artist's
initials O.S.B.
400 x 440mm
\$1500 - \$2500



127 | Edward. B Lattey
Mount Messenger
 oil on board
 signed; title inscribed verso
 400 x 500mm
\$600 - \$900

128 | Graham Cornwell
*Still Life with Rangitoto:
 Something Just Crooked*
 lithograph, 1/11
 445 x 552mm
\$150 - \$250



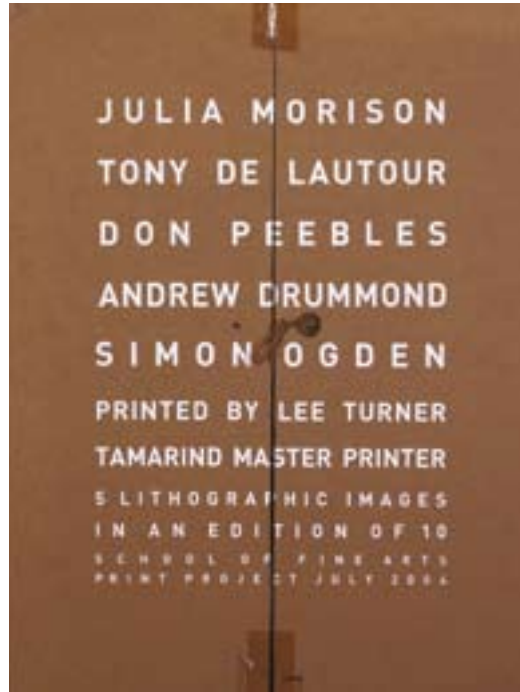
129 | Tony Fomison
Rip Your Head Off
 lithograph, 3/12
 title inscribed, signed
 and dated '86
 460 x 288mm
\$700 - \$1000



130 | Els Noordhof
Abstracted Forms
 acrylic on aluminium
 mounted on board
 signed and dated 1990
 300 x 630mm
\$300 - \$500



- 131** | Philip Clairmont
Chair with Potential Painful Possibilities
 mixed media and collage on paper
 title inscribed, signed with artist's initials
 P.C.T. and dated '76 and inscribed
 (painting or 3 dimensional object)
 (1976 cont. of Lessons in Fright done '71-'72)
 255 x 167mm
 Provenance: From the collection
 of Stephanie Chilcott
\$1000 - \$2000



- 132** | Julia Morison, Don Peebles,
 Andrew Drummond
 Tony de Lautour and Simon Ogden
A Boxed set of Five Tamarind Lithographs
 lithographs, 9/10
 each print signed and dated 2004
 775 x 580mm
\$1000 - \$2000



- 133** | Pat Hanly
Youth in Anger: 7 Ages of Man. 3.
 screenprint and applied metallic paper,
 1/10
 title inscribed, signed and dated '75 and
 inscribed *And then the Lover...*
 403 x 360mm
\$1500 - \$2500



- 134** | Marte Szirmay
Spiral Form
 composite and perspex
 600 x 500 x 260mm
\$600 - \$1000



135 Charles McPhee
The Maori Chief
 oil on velvet
 title inscribed and signed
 900 x 667mm
\$750 - \$1000



136 Ivan Hill
The Artist Ivan Hill Cuddling the Beautiful Model of the Pre-Raphaelites Jane Morris back in 1858
 oil on canvas
 title inscribed and signed
 455 x 352mm
\$500 - \$800



137 Kura Te Waru-Rewiri
Aperture
 oil on board
 title inscribed, signed
 and dated 1/96
 1200 x 1200mm
\$1200 - \$2000



138 Gretchen Albrecht
Sundial
 screenprint, 38/125
 title inscribed, signed
 and dated March '80
 822 x 620mm
\$1500 - \$2500



Jane Brenkley TABLE AND STOOL

from the Northcroft Grant Family Collection

It could be argued for most if not all of the 21st Century the works of Jane Brenkley (b. 1882 d. 1973) have attracted considerable attention whenever they appear in the market place. Some very serious prices have been paid by institutions and private collectors for good examples of her work. Her work first came to prominence in the touring exhibition “Not Bad Eh” in 1996 and in 1999 an exhibition of Brenkley’s works was held at the Hawkes Bay Exhibition Centre entitled “Jane Brenkley – A Path through the Bush” curated by Richard Wolfe.

With the two pieces on offer in this sale the provenance is clear; simple and the family line is unbroken since the works were commissioned. The years surrounding the time the table was manufactured were very productive for Jane Brenkley. Her unique (and this cannot be emphasized enough... they were unique) handcrafted, carved and painted furniture was very much in demand during the 1940’s as is borne out in an order book that survives from that time. The finished works were well received by a small audience frequently possessing an international perspective.

The idealized portrayal of the Maori Family (whanau) with archetypal habitat (whare) and transport (waka) in natural surroundings (whenua) fern studded bush with lakes and mountains are typical Brenkley motifs employed in tables and tableaux, which she is best known for.

Perhaps of greater interest because of its rarity is the carved motif on the stool. This carving was inspired by the wonderful carved Gateway Figures (Waharoa) that were carved by the Master Carver, Tene Waitere (b. 1853/1854? d. 1931) ‘of Ngati Tarawhai.

Waitere was commissioned by the New Zealand Government over 100 years ago to create the carvings for the Model Pah at Whakarewarewa and for the Government Gardens of Rotorua. Rotorua, the town was created by the New Zealand Government in 1880 as a base to radiate out from for the country’s embryonic tourism strategy primarily targeting the Pink and White Terraces at Rotomahana. With their total destruction in 1886 a new focus needed to be established. After many years of reports and commissions a new direction was taken. To this end the Government refocused and created the Model Pah at Whakarewarewa (an idealised Maori Village) surrounded by geothermal activity and the Bathhouse (Sanitorium) in the Government Gardens with its emphasis on “Taking the Waters”.

Now the focal point of the Model Pah was the spectacular Waharoa on which featured a favourite Te Arawa theme that traditionally adorned the richly carved Tribal store houses or pataka, namely that of the copulating couple that symbolised fertility and fecundity. Although Tene Waitere’s spectacular early 20th Century Gateway carving is somewhat missionary modified from the ‘no holds barred’ of earlier Models, it is clearly the inspiration for the carved decoration on the Jane Brenkley Stool.

To have a strong sixty year pair bond between two items of Brenkley’s oeuvre is in itself quite unusual. But to have such a strong unbroken connection with an important Te Arawa family as the owners of these pieces makes it doubly rare.

These two unique items of our Folk Art Heritage although sold separately deserve to remain together.

John Perry

3

OMNI / The Manson Estate Collection

Thursday 8 November 2007 at 6.30 pm

Including important New Zealand furniture, marble statuary, Royal Worcester, silver and Art Nouveau and Deco items

Lots 1 - 284

Pages 57 - 84

VIEWING

Friday	2 November	9am – 5pm
Saturday	3 November	11am – 4pm
Sunday	4 November	11am – 4pm
Monday	5 November	9am – 5pm
Tuesday	6 November	9am – 5pm
Wednesday	7 November	9am – 5pm

Thursday 8 limited viewing - please enquire

Enquiries Ross Millar, ross@artandobject.co.nz 021 222 8185

ART OBJECT

THE 21st CENTURY
AUCTION HOUSE

3 Abbey Street, Newton
PO Box 68 345, Newton
Auckland 1145, New Zealand
Phone +64 9 354 4646
Freephone 0800 80 60 01
Facsimile +64 9 354 4645
info@artandobject.co.nz
www.artandobject.co.nz

1

William Moorcroft *Pomegranate* vase with Tudric pewter base. Trumpet shape issuing from a circular spreading base. Stamped mark: Moorcroft, Tudric, 0310 Made for Liberty & Co., c.1930
H.300mm
\$3000-3500

2

William Moorcroft large *Pomegranate* squat baluster vase. Impressed marks and painted signature, c.1925
D.200mm
\$1000-1500

3

Massive William Moorcroft *Pomegranate* Meiping vase. Decorated with the fruit in pale plum colours on a mottled blue-green ground. Impressed marks and painted signature, c.1925
H.310mm
\$2000-2500

4

William Moorcroft *Pomegranate* vase
Ovoid shape with flaring mouth, raised on a circular spreading foot. Impressed marks and painted signature
H.230mm
\$1000-1500

5

William Moorcroft cylindrical vase with everted mouth. Painted with a unique or rare pattern of fruit and leaves contained in reserved panels, along with leaves and berries rendered over the celadon ground. The panels reserved in white quatrefoil shapes. Shape M159. Impressed factory marks and painted signature. c.1914-1918
H.310mm
\$6800-8000

6

William Moorcroft *Pomegranate* vase
Inverse baluster shape
Impressed marks
and painted initials, c.1930
H.190mm
\$650-950

7

Pair of William Moorcroft *Pansy* vases
Baluster shape. Impressed marks, painted initials and paper label, circa 1935
H.210mm
\$1800-2200

8

William Moorcroft *Flamminian* tobacco box
Squat circular shape, green glazed with trefoil rondels to the wall and lid. Signed and with Liberty & Co retailer's mark, c.1905
Chips to screw lid fitting
D.150mm
\$1250-1500

9

William Moorcroft *Anemone* Vase
Squat circular shape, impressed marks, c.1930
D.110mm
\$200-250

10

Royal Doulton *Sung* porcelain vase by Fred Moore. Modeled as a lotus flower, covered in a veined flambé glaze. Printed *Sung* and *Flambé* marks and FM monogram, c.1930
Cf. *Doulton Pottery from the Lambeth and Burslem Studios 1873-1939*, Richard Dennis Exhibition catalogue page 137 #382 for a comparable example illustrated
H.180mm
\$800-1000

11

Small Moorcroft Leaf and Berry Dish
Raised on small foot ring, impressed marks and painted initials, c.1925
D.115mm
\$300-375

12

William Moorcroft *Pomegranate* baluster vase
Impressed marks and painted initials, c.1930
H.135mm
\$400-500

13

Doulton flambé vase by Charles Noke and Fred Moore
Ovoid shape covered in a speckled flambé glaze
Printed mark, facsimile Noke signature and FM monogram
H.175mm
\$1200-1600

14

Doulton flambé vase by Charles Noke and Fred Moore
Ovoid shape covered in a flambé glaze and decorated with a peacock. Printed *Sung* mark, facsimile Noke signature and FM monogram
Hairline crack
H.175mm
\$600-900

15

William Moorcroft *Wisteria* small comport.
Impressed marks and painted initials, c.1930
D.127mm
\$400-500

16

William Moorcroft *Pansy* inverse baluster vase
Impressed marks and painted initials, c.1935
H.155mm
\$650-850

17

Macintyre Moorcroft *Florian* slender waisted vase
Decorated with iron red and gilt flowers with blue foliage on a salmon ground
Design 326470, registered September 1898
Printed mark
H.245mm
\$2000-2250

18

William Moorcroft *Hibiscus* Dish
Yellow flower on green ground
Impressed and painted marks and paper label, c.1946
D.187mm
\$100-150

19

Two handled vase in the manner of Moorcroft
In the manner of *Aurelian* ware with tulips and other flowers, painted and gilded with slip trailing on salmon and blue grounds
Unmarked. c.1900
H.170mm
\$1400-1600

20

Macintyre Biscuit Barrel
Frieze of flowers slip trailed and slip carved
Possibly by Harry Barnard
Printed factory mark. c.1987
H.160mm
\$700-800

21

Walter Moorcroft circular bowl *African Lily* pattern
Impressed factory marks, facsimile signature and painted initials
c.1945-1949
D.225mm
\$450-550

22

William Moorcroft circular bowl
Leaf and Berry pattern
Impressed factory marks. c.1928-1949
D.135mm
\$350-400



23

Pilkington's Royal Lancastrian ginger jar vase
Lapis lazuli coloured speckled glaze
Impressed marks
H.145mm
\$350-400

24

A Modernist ceramic carafe and plate by René Herbst for Cusenier
Decorated with geometric motifs in brick red on a pea green ground
The architect and designer produced a number of forms for the French wine merchant
Exhibited and the Cusenier stand at the Paris Exposition 1925 and illustrated in *Le Musée de la double soif*, Edmond Haraucourt, Paris 1925
Monogrammed in brushpoint and marked Cvsenier
D.310mm, H.265mm
\$3500-4000

25

G H Brannam *Barum* ware vase
Tapering cylindrical with flaring neck and three wrythen handles. Incised decoration and green-blue glazes
Impressed marks including Made for Liberty & Co.
H.270mm
\$500-600

26

Minton's Secessionist ware vase
Cylindrical with two handles at the shoulder
Decorated with tube lined peacock on a background of stylized foliage
Chip to foot Impressed marks
H.290mm
\$400-800

27

Pilkington's *Royal Lancastrian* bottle vase
Squat circular body with a tall cylindrical neck, decorated with flowering branches in bright orange on a darker orange ground
Impressed marks, c.1910
H.250mm
\$300-375

28

Pilkington's *Royal Lancastrian* shoulder vase
Orange and vermillion glazed body with trailings at the shoulder
Impressed marks
H.250mm
\$350-450

29

Doulton Lambeth studio pottery vase
Decorated with incised foliate pattern
Incised and impressed marks possibly for Eliza Simmance, dated 1881
H.260mm
\$600-800

30

Carltonware Handcraft vase
Pattern 3780, ovoid with encircling ridges covered in a mottled lavender glaze
H.180mm
\$200-300

31

Forester's Phoenix Ronda ware two handled vase
Decorated with birds and foliage on an ivory ground
Signed R Dean to the decoration
Printed mark, c.1930
H.135mm
\$600-700

32

Forester's Phoenix *Ronda* ware vase
Meiping shape decorated with birds and foliage
Printed mark, c.1930
H.175mm
\$350-400

33

Forester's Phoenix *Ronda* ware ewer vase
Decorated with birds and foliage. Printed mark, c.1930
H.220mm
\$350-400

34

Mabel Leigh Aztec Arts and Crafts pottery ewer
With sgraffito decoration of fish to the squat circular body
D.150mm
\$300-350

35

Hauser studio pottery vase
Decorated with trickling majolica glazes to the spherical body and tall neck
H.245mm
\$450-550

36

Keith Murray for Wedgwood, 'Grenade' vase
Matt straw glazed, shape 3765
Printed marks and KM initials, c.1950
H.190mm
\$1200-1500

37

Mabel Leigh *Medina* ware vase
Ovoid shape with sgraffito design highlighted in bright enamels
Circa 1932
H.160mm
\$100-150

38

Amstel *Bursley* ware jug
Decorated with a bird and autumnal foliage
\$90-130

39

Wardle & Co Art Nouveau studio pottery bottle vase
Decorated with a fruiting vine in painted slip on a green ground
Impressed and incised marks, c.1902
H.235mm
\$200-275

40

Crown Ducal ovoid vase
Duck egg blue glazed
Printed marks, c.1935
H.180mm
\$60-100

41

Forester's *Chinaman* jug
Character jug modeled as a seated figure wearing a peacock feather pattern robe
Chip
H.160mm
\$125-175

42

Viennese Secessionist style porcelain vase
Handles formed as the stems of flowering plant
H.210mm
\$100-200

43

Carltonware ewer jug
Decorated with Tube lined Trees pattern on celadon ground, #3944, c.1937
H.170mm
\$100-150



44

Large Copeland Parian Bust of *Daphne*
Modeled by Marshall Wood, set on a waisted circular socle, impressed mark, c. 1860
\$3250-4000

45

Copeland Parian bust of the Prince of Wales
After Marshall Wood, modeled by F M Miller
Commissioned by the Crystal Palace Art Union and so marked, dated 1863
Standing on an alabaster socle
H.290mm
\$700-900

46

Alabaster statuette *The Dying Gaul (Galata Morente)*
after the antique W.55mm
\$1500-1750

47

Alabaster bust after the *Apollo Belvedere*
Portrayed with hair tied by a strophium
Raised on socle plinth
H.410mm
\$600-700

48

Rare Belleek Parian ware figure 'Erin Awaking from her Slumbers'
Impressed and printed black mark, c.1870
Attributed to W. Boyton Kirk or RVW Armstrong
Modelled as a classical beauty holding a drapery revealing a vase and pedestal labelled 'BELLEEK POTTERY', an Irish harp at her side, the base moulded as flagstone washed by the waves of Lough Erne Cf. Marion Langham, *Belleek Irish Porcelain*, London, 1993, p.4-5
H. 425mm
\$3000-4000

49

Pair of Martial Redon Limoges porcelain figures
A falconer in seventeenth century costume, along with a woman costumed from the same period
Manufacturer's marks, c.1882-1896
H.460mm
\$1750-2000

50

Otakar Steinberger
Gypsy Dancer
Chryselephantine statuette, ivory and bronze with gilded and silvered patina
Signed and dated 1920
H.595mm
\$7500-8500

51

Early 20th century alabaster statuette of a young woman in love
Modelled standing, she gazes dreamily as she secretes a letter inside her chemise
H.750mm
\$1200-1400

52

René Lalique *Thomery* square bowl
Clear and frosted glass with rim moulded in low relief with a grape vine
Marked R Lalique, France. Number 3280
W.240mm
\$1200-1500



53

Lalique clear and frosted glass bowl
Decorated intaglio with a pattern of birds amongst serrated edged leaves
Marked Lalique, France
D.2137mm
\$1500-1750



54

René Lalique *Marguerites* shallow bowl
Clear and frosted glass moulded in low relief with daisies to the rim and stylized stems radiating towards the centre. Green stained finish
Marked R Lalique
Number 385
D.340mm
\$2250-2750



55

Lalique Roger circular box and cover
The cover with clear glass hemispheres scattered amongst a pattern of birds and fruiting vines, the vertical sides with vine paneled moulding
D.137mm, H.50mm
\$1000-1250



56

Lalique *Igor* Caviar Dish
A hemispherical clear glass ice bowl raised on three frosted stylized fish with a smaller concentric frosted glass bowl suspended by a silver metal frame with a cover surmounted by a conforming sturgeon finial
Marked Lalique, France
D.195mm, H.255mm
\$1750-2000



57

René Lalique *St Francois* vase, c.1930
Opalescent and frosted glass flaring beaker shape
Marked R Lalique
Foot ring chip
H.177mm
\$4800-5200

44



45



46



51



47



48



49



50



58

Bronze cased French mantel clock
 Surmounted by a figure of a Theban scribe
 The drum cased pendulum movement striking on a bell, white enamel dial with Roman numerals with an ormolu capital of laurel leaves and tomes
 VV.580mm
\$2000-2500

59

Bronze of Mercury after Giambologna
 Raised on a base decorated with a bas relief bronze of Cupid's workshop after Clodion
 H.840mm
\$1500-1750

60

Art Deco figure of a Spartan archer
 Bronzed finished metal raised on black veined marble plinth
 H.500mm
\$250-500

61

Bronze of Mercury after Giambologna
 Raised on a base decorated in bas-relief with a bacchalian scene
 H.490mm
\$500-750

62

Large bronze allegorical group
 The group of two men wrestling a bull rearing over a fallen woman, another woman and child look on
 Set on a naturalistically modeled base, raised on a bronze plinth and twin layer verde alpe marble swiveling base
 H.725mm
\$4000-5000

63

Bronze Art Deco statue *Danse du Printemps* by P de Soete
 The nude dancer balances on one leg holding bouquets in her outstretched hands
 Raised on a shallow marble float bowl, signed
\$500-750

64

19th century bronze of Hippiomenes
 The Greek figure from antiquity is portrayed in his race to win the hand of Atalanta
 Raised on marble circular plinth
 H.490mm
\$3000-3500

65

Art Deco bronze group of two deer by Irénée Rochard
 One alert follows the other with head down feeding, signed
 L.635mm
\$1500-1750

66

Pair of black slate and bronze urns
 Campana shape, decorated with bas-relief panels, raised on stepped square plinths
 H360mm
\$800-1000

67

French Art Deco cold painted bronze statuette group of a woman with a hound
 Raised on a coloured stone plinth
 L.690mm
\$500-600

68

Pair of turned black marble campana shaped urns
\$400-500

69

Pair of French Louis XV style ormolu table candelabra
 Late 18th - early 19th century
 Five nozzles raised on acanthus arms issuing from a rococo base with seated cherubim
 H.460mm
\$2400-2800

70

French Louis XV style ormolu cased mantel clock
 The ornate case framed by acanthus scrolls forming an arbour where a woman sits smitten by cupid's arrow
 The bell striking movement with silk suspended pendulum, the gilt face with white enamel hour plaques and blued steel hands, 19th century
 H.500mm
\$3400-3800

71

Pair of Venetian wood and gesso blackamoor figures
 The woman stands holding an amphora wearing robes with a millegrain texture, decorated with islimi tendrils and floral medallions painted in polychrome and gilt
 The man stands holding a tazza of fruit, similarly robed, circa 1900
 H.825mm
\$8000-10000





58



59



60



61



62



63



64



65



66

72

Italian bust of a woman by E Guerrieri
In white and mottled stone
Late 19th century. H.500mm
\$2000-2500

73

Italian verde alpe marble column
With oval capital supported on a wrythen twist
carved tapering column, from an octagonal base
H.1135mm
\$600-800

74

'Modesty' a carrara marble sculpture by
Giosue Argenti, 1867
Raised on socle pedestal and with associated marble
column. Signed Cav. Giosue Argenti R M 1867 under
the studies shawl. H.670mm, overall 1810mm
\$5000-6000

75

Italian Art Nouveau alabaster bust of
a young woman
She wears a wreath of bay-laurel in her hair and a
chain headband across her forehead. Her slightly
mottled chemise collar is lightly engraved with a
foliate design. H.510mm, overall 1680mm
\$2500-3000

76

Italian alabaster statuette group of
young lovers
He sits upon a rock from which a spring issues,
holding the hand of the woman who has filled
her water pot. Raised on associated alabaster column
H.650mm, overall 1700mm
\$2400-3000

77

Early 20th century alabaster figured lamp
Carved as a woman in bathing costume, seated upon
a rock as a wave crashes at her feet
A domed lampshade is raised on a baluster column
behind her. With associated alabaster knopped
column. H.670mm, overall 1800mm
\$2750-3500

78

Italian veined alabaster column. Carved with an
encircling band of fruiting vine. H.1100mm
\$800-900

79 | Pair of Italian carrara marble statues by G Viviani

Of young women, lightly draped, one holds a
single rose, the other a bouquet of roses and
other flowers

With incised sculptor's signature to each
Raised on square section pedestal bases

H.1400mm, overall 2500mm

\$25 000-30 000



72



73



74



75



76



80 | Rare Hadley's Worcester japanesque exhibition vase

Shape 885, probably modeled by James Hadley, an example shown at the Worcestershire Exhibition in 1882 and possibly specifically made for that exhibition

Richly decorated with gilding and bronzing the Meiping shaped vase is flanked by four lissom dragons, raised on a base supported by four stylized elephant's heads

Cf. *The Art Journal (Worcester and Its Exhibition) 1882*

H.600mm

\$35 000-45 000



81 | Rare Grainger Worcester reticulated porcelain exhibition vase

Probably modeled by George Owen for the George Grainger owned Royal China Works in the late 1880s predating the take-over by the Worcester factory

Photographs exist in the Dyson Perrins Museum (Worcester) of the vase in the 1890s and the assumption is the vase was kept after the takeover in 1889

A photograph reproduced in *Royal Worcester Porcelain 1862 to the present day*, Henry Sandon, 1973, shows the vase in an upper floor window of Grainger's shop-front at Foregate, Worcester

H.800mm

\$50 000-60 000



82

Royal Worcester potpourri painted by Harry Davis
Shape H165, two handled squat circular with
pierced cover and collar; raised on a domed square
foot Painted with two black faced sheep in a
highland landscape

A misty landscape vignette verso. Puce mark, c.1922
W.160mm

\$5000-5500

83

Royal Worcester potpourri painted by Harry Davis
Shape 2364, shallow urn shape with naturalistic
blossom branch handles and pierced cover

Raised on a neoclassical short stemmed base from
a square foot. Painted with wading cranes in an
extensive landscape which encircles the urn

Puce mark, c.1910

W.175mm

\$8000-9000

84

Royal Worcester two handled vase painted
by John Stinton

Shape H248, ovoid with a trumpet neck, handles at
the shoulder with flower bud terminals

Raised on a spreading circular foot

Painted with highland cattle in a misty landscape,
and to the reverse with a loch edge scene

Green mark, c.1909

H.380mm

\$5000-6000

85

Royal Worcester vase and cover painted
by John Stinton

Shape 1407, ovoid with pierced neck and cover;
moulded draperies across the shoulder; satyr mask
handles, raised on knopped stem from circular foot

Painted with highland cattle in a valley landscape,
a misty loch scene to the reverse

Puce mark, c.1919

H.365mm

\$6500-8000

86

Royal Worcester two handled vase and cover painted
by John Stinton

Shape 2040, ovoid with acanthus scroll handles,
conforming cover; raised on a moulded foot

Painted with cattle in a misty highland landscape
beside a loch

Puce mark, c.1919

H.420mm

\$7000-8000

87

Worcester vase painted by John Stinton

Shape 1109, squat circular with flaring mouth, loop
handles at the shoulder.

Painted with highland cattle in a gloowering landscape,
the reverse with a rocky shore promontory

H.295mm

\$4500-5500

88

Royal Worcester vase by John Stinton
Shape 1109, squat circular with flaring mouth,
loop handled

Painted with four highland cattle beside a loch,
the reverse with a misty loch-side landscape

Puce mark, c.1907

H.295mm

\$4000-5000

89

Royal Worcester porcelain figure; HRH The Duke of
Edinburgh on his polo pony

Issued 1968 in a limited edition, number 337 of 750,
modelled by Doris Lindner

Complete with edition certificate

\$4000-4500

90

Royal Worcester porcelain figure; HM The Queen
(when Princess Elizabeth)

In the uniform of the Grenadier Guards on the
occasion of the Trooping of the Colour; 1947,
on Tommy, Limited edition, 74 of 100, modelled
by Doris Lindner

Complete with edition certificate. CF *Royal Worcester
Porcelain 1862 to the present day*, Henry Sandon,
1973, pg 63

\$10000-12000



91

Royal Worcester porcelain figure ; Merano and Captain Raimondo d'Inzeo

Limited edition issue from 1963, number 473 of 500, of the eight times Olympic show-jumper

Modelled by Doris Lindner

Complete with edition certificate

\$2200-3200



92

Royal Worcester figure: Marion Coakes on Stroller Limited edition issue from 1970, number 554 of 750, of the Olympic show-jumper

Modelled by Doris Lindner

With edition certificate

\$2200-3200



93

Royal Worcester study of a Shire Stallion

Modelled by Doris Lindner

With edition certificate

Number 14 of 500

\$2000-2500



94

Royal Worcester study of a Clydesdale Stallion

Modelled by Doris Lindner

Complete with edition certificate

Number 236 of 500

\$2000-2500



95

Royal Worcester study of a Arab Stallion

Modelled by Doris Lindner from Indian Magic

Issued in 1962

Complete with edition certificate

Number 97 of 500

\$2600-3000



96

Royal Worcester equestrian study of an Officer of the Royal Horse Guards

Modelled by Doris Lindner

Number 142 of 150

Complete with edition certificate

\$2000-2500



97

Royal Worcester equestrian study of an Officer of the Life Guards

Modelled by Doris Lindner

Complete with edition certificate

Number 137 of 500

\$2000-2500



98

Royal Worcester study of a Hackney Stallion
Modelled by Doris Lindner
With edition certificate
Number 289 of 500
\$2000-2500



99

Royal Worcester study; The New Born
Modelled by Doris Lindner
With edition certificate
Number 214 of 500
\$2000-2500



101

Royal Worcester study of a Santa Gertrudis bull
Modelled by Doris Lindner; Number 483 of 500
Complete with edition certificate
\$2000-2500



102

Royal Worcester study of a Freisian bull
Modelled by Doris Lindner; Number 223 of 500
Complete with edition certificate
\$2000-2500



103

Royal Worcester study of a Charolais bull
Modelled by Doris Lindner from Vaillant,
the 1967 champion of the Concours Generale
Agricole de Paris. Number 480 of 500
Complete with edition certificate
\$2000-2500



104

Royal Worcester study of a Dairy Shorthorn bull
Modelled by Doris Lindner; Number 155 of 500
Complete with edition certificate
\$2000-2500



105

Royal Worcester study of a Brahman bull
Modelled by Doris Lindner; Number 205 of 500
Complete with edition certificate
\$2000-2500



106

Royal Worcester study of a Hereford bull
Modelled by Doris Lindner; Number 975 of 1000
Complete with edition certificate
\$2000-2500



107

Royal Worcester study of a Highland bull
Modelled by Doris Lindner; Number 58 of 500
Complete with edition certificate
\$2000-2500



108

Royal Worcester study of a Jersey bull
Modelled by Doris Lindner; Number 305 of 500
Complete with edition certificate
\$2000-2500



I09

Royal Worcester plate
Painted by Harry Ayrton with a view
of Pembroke Castle. Signed. D.275mm
\$600-700

I10

Royal Worcester plate
Painted by Harry Ayrton with a view of Windsor Castle and lake.
Signed. D.275mm
\$600-700

I11

Royal Worcester plate
Painted by Harry Ayrton with a view of Richmond Castle and
bridge. Signed. D.275mm
\$600-700

I12

Royal Worcester plate
Painted by Harry Ayrton with a view of Arundel Castle and river.
Signed. D.275mm
\$600-700

I13

Royal Worcester plate
Painted by Harry Ayrton with a view of Warwick Castle and moat.
Signed. D.275mm
\$600-700

I14

Royal Worcester plate
Painted by Harry Ayrton with a view of Kilchurn Castle and loch.
Signed. D.275mm
\$600-700

I15

Royal Worcester plate
Painted by Raymond Rushton with a view of Kenilworth Castle
ruins. Signed. D.275mm
\$600-700

I16

Royal Worcester plate
Painted by Raymond Rushton with a view of
Welford on Avon. Signed. D.275mm
\$600-700

I17

Hadley's Worcester table jardinière
Painted with roses in the manner of Millie Hunt
Printed and painted marks. D.130mm
\$450-500

I18

Royal Worcester figurine *Magnolia Bud*
Modelled by G Parnell. H.115mm
\$200-400

I19

Wedgwood Fairyland lustre malfrey pot
Design by Daisy Makeig-Jones
Pattern Z4968 and printed marks
Decorated in three panels under Sycamore Tree
on daylight lustre ground: Feng Hwang; fairy Slide
and lake and castle
The lid with Pan-Fei border and a fairy captured
in a web H.245mm
\$5000-10000

I20

Pair of Doulton Lambeth vases by Hannah Barlow Tall
tapering cylindrical with a flaring pan mouth Decorated with
an encircling panel in sgraffito with rural scenes with sheep
and horses
A fruiting vine, tube lined and in coloured glazes decorates
the foot and shoulder
Impressed marks and incised artist's monogram
One with hairline H.355mm
\$3000-4000

I21

Royal Doulton cabinet vase by R H Plant
Painted in a panel with a view of Chepstow Castle, signed,
reserved on a blue and gilt ground
H.210mm
\$800-1000

I21A

Royal Doulton *Gnomes* plate
Decorated with six figures hiding amongst
the roots of a tree D.260mm
\$500-600

I22

Tudric Pewter rose bowl dsigned by David Veazey Stamped
marks and number 011
Cast in low relief with standard roses and to an encircling
bänderole: 'And the Musk of the Rose is Blown, And the
Woodbine Spices are Wafted Abroad' D.300mm
\$2250-2750



I19



120



121



121a



122

I23

Chinese soapstone figure of Kuanyin

\$150-250

I24

Fine Japanese ivory, lacquer and shibiyama table screen of two panels, one side with shibiyama decoration of figures in a landscape with pavilions, the other side carved in low relief with herons beside a pond. Signed on red lacquer tablet

Screens panels unite by complex bi-folding silver hinges

230 x 245mm

\$4000-4500

I25

Large Japanese shibiyama, silver and lacquer vase

The body of the vase decorated with four panels depicting birds and various flowering plants, reserved on a gold lacquered ground

Four small silver dragons perch on the shoulder flanking the silver trumpet neck which is decorated with floral enamel designs, similarly repeated to the foot. Signed under the base on inlaid tablet

H.380mm

\$15 000-17 000

I26

Silver wire cloisonné shoulder vase

Decorated with spider chrysanthemums and daisies on a dark cobalt blue ground

H.305mm

\$1 100-1300

I27

Japanese bronze figure of a fisherman

Modelled standing playing a pipe whistle, holding bamboo pole, his kagome basket strapped to his waist. Impressed artist's signature to base

H.405mm

\$2250-2750

I28

Pair of Japanese Meiji period bronze vases

Flattened oval shape raised on dome foot and with flaring neck. Decorated with two panels depicting birds and flowering plants in various raised metal techniques. The background a plethora of rondels depicting mythic beasts amongst scrolling foliage

H.292mm

\$4500-5000

I29

Pair of Japanese bronze vases, decorated in high relief with birds and fruiting boughs

\$300-350

I30

Japanese bronze study of a tiger

With inlaid glass eyes

Signed on tablet under belly

L.300mm

\$600-800

I31

Chinese carved ivory Confucian scholar

Accompanied by an attendant with libation cup

H.190mm

\$400-500

I32

Japanese carved ivory figure of Hotei with attendant children

Two stand on his shoulders, one at his feet. He stands with a hand on his corpulent belly

H.305mm

\$1000-1300

I33

Japanese carved ivory figure of Fukurokuju

Standing holding a reishi staff and a peach

Signed

H.206mm

\$600-800

I34

Japanese ivory okimono of a fisherman with two massive carp

He sits upon them exclaiming his fortune

Signed

H.80mm

\$400-500

I35

Japanese ivory netsuke of a carpenter

Seated on a low bench he checks the blade of his plane

\$150-250

I36

Japanese ivory netsuke of a young boy with a koi carp

\$150-200

I37

Miniature Japanese Satsuma miniature vase by Kinkozan

Hexagonal section, shouldered shape, decorated with panels reserved on a blue and gilt ground, depicting women in a garden and flowering chrysanthemums

Signed under rhte base

H.90mm

\$600-800

I38

Miniature Japanese Satsuma vase by Fujizan

Shouldered shape, decorated with an encircling panel of thirty-one figures including samurai, a strolling musician, an equestrian noble, geisha and children. Other panels depict fish and birds

Signed

H.92mm

\$2750-3250

I39

Miniature Japanese Satsuma koro by Meizan

Cylindrical, decorated with a profusion of flowers and with a silver wire cover in the form of a chrysanthemum motif

Signed H.62mm

\$2000-2250



123



124



125



126



127



128



129



130



131



132



133



128



I40

Victorian silver gilt child's teether rattle
With coral teether, five bells suspended from an
acanthus engraved body with whistle
Maker's mark GU for George Unite
Circa 1855
\$500-800

I41

Edwardian sterling silver child's rattle
With teether; ten bells suspended in two tiers from a
double knopped body with whistle
Maker's mark GU for George Unite
Circa 1905
\$600-800

I42

Austrian silver and enamel box
The hinged lid set with an intaglio carved oval rock
crystal depicting a vase of flowers, the lid, black
enameled with engraved foliate designs and bosses
Fine bead edging around the low walls
The interior gilded
Circa 1920s
W.75mm
\$4000-4500

I43

Sterling silver snuff box
Birmingham 1810
\$200-300

I44

Sterling silver vinaigrette
Gilded interior with pierced grille Birmingham 1826,
Maker's mark NM for Nathaniel Mills
\$300-400

I45

Edwardian sterling silver card case
Slender curved form, engraved with foliate tendrils,
gilded interior
Birmingham 1900, makers mark R.B.s
for Rolason Bros.
\$100-150

I46

Pair of Queen Anne Britannia standard silver
trencher salts
Octagonal form with an oval well and concave walls
Heavy gauge. Later period crest of a collared lion's
head erased engraved to each. London, 1702-03,
maker's mark FA for John Fawdery I.
W.72mm
Along with four salt shovels, marked JW
(old English) for Jas Wilkes Circa 1739
\$1000-1500

I47

Edwardian sterling silver chatelaine
With four implements suspended by chains from
a filigree hanger – a tape measure drum, a pair of
scissors in scabbard, a thimble in holder and a needle
or chalk case
All Birmingham 1903/04, maker's mark LE for
Lawrence Emanuel, except the thimble 1905
Maker JF
L.350mm
\$2500-2750

I48

George II sterling silver pap boat
Indistinct marks, Associated with a William Walter
(London SilverVaults) invoice attributing it to 1732,
by the maker George Jones
\$400-500

I49

Dutch silver apostle spoon
The ornate stem surmounted by a figure of St Peter
Hallmarks to back of bowl and tax mark to the bowl
handle union
\$1000-1250

I49A

Pair of perfume bottles by Samuel Mordon
& Co, London
Modeled as a pair of opera glasses
Gilded metal and ivory
\$300-600

I50

Victorian sterling silver sideboard tray
Circular; scalloped rimmed, with bound reeded
edges and incurved acanthus leaves
Raised on four conforming feet
The centre engraved with foliate scrolls framing the
coat of arms of Baron Penrhyn. London, 1868
Maker's marks: crown IH & RR for Hunt
and Roskell (late Storr and Mortimer)
D.562mm
\$10000-12000

I51

Massive silver plate and ebony trophy flagon
With military competition engraved inscription,
dated 1886 to the base
The walls set with oval plaques cast in high relief
depicting a classical allegorical scene
The hinged lid surmounted by a lion
H.390mm
\$3000-3500

I52

Massive silver plate and Scottish ram's horn club
snuff mull
The oval mull supported between the pair of horns
and steadied by a single cloven leg
The hinged lid with fighting dog finial
W.590mm
\$4000-4500

I53

George III sterling silver porringer
Wrythen bowl with rope twist band and
two scroll handles. Newcastle 1769-70
\$1500-2000

I54

Pair George II sterling silver plates
Circular; serpentine gadrooned rimmed London
1746 and 1729
Maker's mark: crowned TG for Thomas Gilpin
D.245mm
\$3000-3500

I55

Irish sterling silver two handled trophy cup
Conical raised on a circular spreading foot
Dublin 1803
H.250mm
\$1000-1500

I55A

Sterling silver swing handled basket
Raised on circular spreading foot
Embossed with scallop anthemions and flowers
Birmingham 190, maker's mark
JS&S for J Sherwood & Sons
D.230mm
\$400-600

I56

.925 silver bonbon dish
Square shape with rope twist border
Raised on three feet
W.155mm
\$125-175

I57

Edwardian sterling silver monteith shape
rose bowl, with swollen paneled walls between
vertical ribs, raised on a circular foot. Birmingham,
1906, maker's mark A&JZ for A & J Zimmerman
D.206mm
\$600-900

I58

American sterling silver hammer finish porringer,
with Greek key border and single lyre shaped handle
Maker's marks stag's head and RVW&S for R.Wallace
& Sons
\$200-300

I59

Heavy sterling silver octagonal lozenge shaped
serving dish
With two handles, raised on acanthus scroll feet
Glasgow 1899, maker's mark RS over WS for
R & W Sorley
320 x 195 x 70mm
\$650-750



140



142



146



150



152



147



149a



153

160

Art Nouveau sterling silver tray
Oblong with serpentine outline, embossed with maidens and poppies with whiplash foliage
Birmingham 1907, marked W.B. LD for Williams (Birmingham) Ltd
307 x 225mm
\$500-600

161

Victorian sterling silver oval tray
Engraved with festoons
Gadrooned rimmed, bead edged
Birmingham 1893, T.V. for T. Wooley
350 x 270mm
\$600-700

162

George III sterling silver sugar basin.
Two handled, with foliate engraved border
London, probably 1804
\$200-300

163

Edwardian sterling silver pedestal bowl
Square with serpentine rim, raised on a slender stem from an octagonal pedestal
Birmingham 1911, Williams (Birmingham) Ltd
\$700-900

164

Art Nouveau sterling silver photograph frame
Embossed with irises and whiplash tendrils
Birmingham 1904
\$350-450

165

Pair of George III sterling silver candlewick scissors,
London 1805
\$300-400

166

Pair Georgian sterling silver sugar tongs
Decorated with wigglework, bright cutting and engraved with Prince of Wales feathers
London 1819, maker's mark IB, possibly John Blake
\$130-180

167

Pair of Georgian sterling silver sugar tongs
Fiddle pattern, London 1819
Maker's mark S.P. possibly for Samuel Priest
\$110-150

168

Victorian sterling silver mustard pot
Oval section with domed, hinged lid and blue glass liner.
Birmingham 1894, maker's mark EJH NH for Haseler Bros
\$325-400

169

George III sterling silver cream jug
Decorated with bright cut banding
London 1801, maker's mark indistinct DU over NH for Duncan Urquhart and Napthali Hart
\$675-750

170

George III sterling silver sauce jug
Squat oval shape with serpentine rim, raised on pad feet and with acanthus capped handle
Newcastle, 1770, maker's mark O over I.L. for John Langlands
\$400-600

171

Sterling silver filigree domed cover
Engraved with rose swags
Finial absent
Birmingham 1911
\$150-200

172

George III sterling silver sugar basket
Neo-classical boat shape with stemmed foot, swing handle, reeded rim
Engraved with ducal crest
London, 1797, maker's marks HC over IE for Henry Chawner and John Eames
\$300-400

173

Silver boat shaped spoon warmer
Form suggestive of Noah's ark with dove flying above crow's nest. Raised on a circular spreading foot with wavy concentric patterning
Marked 833, possibly Brazilian
W.185mm
\$500-600

174

Victorian sterling silver egg cruet
London, 1883. Maker's mark WS over HS for W & H Stratford. With six spoons by Walker & Hall
\$1200-1500

175

Large silver on copper monteith shaped bowl
Decorated with chinoiserie figured panels
D.285mm
\$400-475

176

Georgian coin silver toddy ladle with twist horn handle
The oval bowls set with a George II coin
\$250-400

177

Cased limited edition set of sterling silver
Queen's Beasts spoons
Number 1299 of 2500, Birmingham 1977 by Toye, Kenning & Spencer
\$800-1000

178

Pair of George III sterling silver Old English pattern berry spoons
The bowls chased with flowers, the stems with conforming engraving and monogrammed AAO
London 1799
Maker's mark RC for Richard Crossley
\$800-1000

179

Pair George III sterling silver berry spoons
Bright cut stems, gilded bowls embossed with flowers
London 1791, maker's mark GG for George Grey
\$600-800

180

Pair of George III sterling silver berry spoons
Old English pattern, the gilded bowls chased and engraved with birds in branches
London 1802
\$400-800

181

Irish sterling silver soup ladle
Fiddle pattern, circular bowled. Dublin 1751, marks indistinct but probably IL for John Laughlin
\$600-700

182

Set of four Victorian sterling silver tablespoons
Fiddle pattern. London 1842, maker's mark IL over HL for John & Henry Lias
\$250-300

183

Set of three Old English pattern tablespoons
Two London 1855 by Elizabeth Eaton, the other 1824 by Edward Thomason
All with crest of a dexter arm in armour embowed holding a sword, issuing from a coronet
\$180-240

184

Set of ten Scottish sterling silver dessert spoons
Bright cut stems with monogram
AM B. Edinburgh, 1790, maker's mark FC for Francis Howden
One repaired
\$600-800

185

Pair of George III sterling silver table spoons
Old English pattern, monogrammed
G. London 1782, maker's mark WS for William Sumner
\$200-275

186

Pair George IV sterling silver sauce ladles
Fiddle pattern, engraved with a crest of an eagle displayed. London 1827, maker's mark BD for Benjamin Davis
\$300-375

187

Cased pair sterling silver fish servers
Queen's pattern with ribbon work tines and pierced pattern to the blade. London, 1862
Maker's mark SH.DC for Samuel Hayne & Dudley Cater
\$800-1200

188

Eighty-four piece setting of sterling silver cutlery
Various makers and dates, Old English pattern
The associated knives, German-made
\$4000-4500

189

Heavy gauge William IV sterling silver fish slice
Fiddle pattern, with ladder and crescent pierced blade. London, 1836, maker's mark SH over DC for Samuel Hayne & Dudley Cater
\$425-500

190

Fiddle pattern sterling silver fish slice
Lanceolate piercing to the blade
London 1832 maker's mark *IH* for Johnathan Hayne
\$350-400

191

George III sterling silver basting spoon
Old English pattern, London 1771, maker's mark RR
for Richard Redrick
\$325-400

192

Set of 6 serving spoons and 12 spoons
Modeled on examples found in Roman antiquity
([HYPERLINK "http://penelope.uchicago.edu/Thayer/E/Roman/Texts/secondary/SMIGRA*/C.html"](http://penelope.uchicago.edu/Thayer/E/Roman/Texts/secondary/SMIGRA*/C.html))
"Cochlear" (index) cochlearia) with a spike finial
for extracting shell-fish. London 1925, maker's marks
R&S for Reid & Sons
\$2500-3000

193

Part set of Continental silver plated cutlery
Comprising 80 pieces
\$300-500

194

Small sterling silver double photo frame
\$80-100

195

Victorian painted and carved wooden string holder
\$75-100

196

Treen circular lidded box
Decorated with penwork rondel
\$110-150

197

18th Century treen snuff box
Boxwood with inlaid horn rondel
engraved with initials
\$110-150

198

Victorian treen perfume bottle case with original bottle
\$40-50

199

Victorian bone parasol shaped needle case
\$40-50

200

Lalique frosted glass sparrow
Etched mark
\$110-140

201

Two Lalique green glass fish
Impressed marks
\$275-300

202

Fine silver cased lady's pocket watch
Open face, enamel dial, keywind movement
\$60-100

203

Sterling silver pin cushion
Modelled as an elephant
Birmingham 1905
H.40mm
\$225-300

204

18ct gold engraved cased lady's pocket watch
Key wind movement, engraved: *G & J Young, Dunedin*
86574. Etched open face with Roman numerals
\$350-400

205

French official's stamp in silver plated case on chain
Controle Gnl. De La Main-D'Oevre Agricole Militaire
\$175-200

206

French ivory and polished steel purse
Blue material lined interior
The cover inset with a gold shield
shaped escutcheon
\$125-150

207

Sycamore wood Mauchlin ware cotton reel holder,
decorated with a vignette of
Bridport Harbour
\$70-90

208

Bone 'Stanhope' needle case
Memory of Bridlington Quay, Dublin
\$110-150

209

Small Georgian papier maché snuff box
\$110-150

210

Georgian rosewood snuff box
The hinged lid inlaid with a silver four
leaf clover
\$90-110

211

Two sterling silver copies of the English royal
anointing spoon. Birmingham 1936
\$35-45

212

Georgian bell bowled wine glass with red and
opaque twist stem reduced foot, c.1780
\$500-650

213

Georgian bell bowled wine glass
With opaque twist stem, c.1775
\$350-450

214

18th century jelly glass Vase shape with cutting,
on a hexagonal foot
\$60-100

215

Georgian mallet bodied glass decanter
With knopped neck and thumb cut walls
\$200-275

216

Jos Kivits
Silver and Roses
Oil on board
Signed, Titled and dated 76 verso
230 x 280mm
\$1500-1750

217

Artist Unknown, 19th C European school
Oil on canvas. 440 x 605mm
\$500-900

218

Artist unknown
Portrait of a man with lace collar
Oil on board. 745 x 580mm
\$250-350

219

Robert Weir Allan
Clivedon Woods from the Thames
Oil on canvas. Initialled, title inscribed verso.
495 x 750mm
\$500-900

220

T. Blakely
Extensive English rural landscape
Oil on canvas. Signed, dated 1880
397 x 540mm
\$500-600

221

James McIntosh Madden
View of a river with cattle in foreground
Watercolour
Signed
200 x 370mm
\$800-1000

222

Jos Kivits
Still Life with Delft Ewer
Oil on panel
Signed
382 x 485mm
\$2000-2500

223

F Lindegg
Eventide on the banks of the Maas
Oil on board
Signed
Title inscribed verso
490 x 800mm
\$400-800

224

19th Century Continental school
Allegorical scene
Oil on canvas
850 x 1090mm
\$1200-1400

225

George W Pettitt
A Cumbrian lake scene
Oil on canvas
Signed, dated 1882
500 x 880mm
\$400-600

226

W Richards
Landscape with cattle and figures
Oil on canvas
Signed
390 x 590mm
\$400-800

227

Whitecliff
At the bar
Acrylic on board
Signed and dated 1983
405 x 430mm
\$200-300

228

Maurice-Paul Joran
At the easel in the studio
Oil on canvas
Signed. 385 x 300mm
\$1000-1200

229

P Harris
Hunting scenes
Pair of oils on panel
Signed. 120 x 172mm
\$800-1000

230

Artist Unknown
Portrait of an old Jewish man
Oil on card
Inscribed verso: "Restored by me Nov 1986..."
90 x 70mm
\$150-250

231

George Smith (Brithish 1829-1901)
The Flower Gatherers
Oil on board
Signed and dated 1852
105 x 85mm
\$900-1000

232

Late Georgian mahogany framed toilet
swing mirror
\$300-400

233

19th century mahogany flat front chest of five
drawers with ebony bun handles
\$1500-2500

234

Georgian mahogany washstand
The upper shelf held on turned supports
The lower self with two drawers with turned
handles raised on turned legs
W.830mm
\$1800-2000

235

Coalbrookdale style cast iron hallstand
Decorated with panels of farmers framing
the mirrored back
\$1200-1800

236

Pair of Georgian mahogany bedside cabinets
\$650-950

237

Victorian metamorphic chair
The Back folds over to form a step-stoll
\$500-800

238

Georgian mahogany oval tray
With brass bound staved walls, rising at
the sides to form scrolling handles
\$400-500

239

Victorian style brass skeleton clock
Under glass dome
\$800-900

240

French three piece clock garniture
Ormolu and porcelain panels with conforming finial
and matching pair of candelabra
\$1600-2200

241

Pair of black veined marble pedestal columns
With bronze Corinthian capitals
\$800-1000

242

A kauri flat top pedestal desk
With central drawer flanked by two banks
of four drawers. W.1550mm
\$1200-1800

243

An Art deco birdseye maple dining room suite.
Comprising a sideboard with four frieze drawers
above cupboards; a display cabinet with sliding glazed
paneled doors and an extension dining table with six
associated chairs with leatherette upholstered seats
and backs
\$8000-10000

244

An Art Deco figured maple desk
With four open compartments and with a single
frieze drawer raised on pillar form legs from a
crescent platform base. W.1260mm, H.930mm
\$1500-2000

245

Art Deco bronze group in the manner of Hagenauer
Of a woman with two leashed hounds
Raised on a porphyry stepped base W.350mm
\$900-1300

246

An English oak sideboard
The upper section with open compartment framed
by carved paneled doors and leadlight glazed doors.
The lower section with central carved panel flanked
by conforming doors above three drawers
Raised on bun feet 18th century and later
W.1400mm, H.2170mm
\$3000-4000

247

American oak roll top desk
The roll inclosing a fitted interior; raised
on two pedestals of graduated drawers
Along with a swiveling oak desk chair
\$1800-2200

248

Kahu kiwi (Kiwi feather cloak)
On muka two ply woven foundation,
late 19th/early 20th century
940 x 1150mm
\$3000-5000

249

A folk art *kotiate* (hand club)
Dark stained timber; carved to the blades with
various faces and *moko* The butt knob as a janus face,
a female with chin *moko* facing one way and a *wheku*
head the other L.400mm
\$600-800

250

Nephrite *hei tiki*
Modelled with chin to left shoulder; hands to
thighs, with associated invoice and 1966 letter from
Atwaters Antique Dealers detailing the tiki as being
presented by Major Ropata to Colonel George
Whitmore on his election to the Legislative Council
and appointment as Colonial Secraetary in 1877
E Ball writing the letter states that he bought it from
the grand-daughter of the Colonel H.118mm
\$1500-2000

251

Nephrite *hei tiki*
Modelled with head tilted, chin to right shoulder;
hands to flexed thighs. Ring eyes with traces of red
wax. Pierced with suspension hole through forehead
This *tiki* reputedly was owned by the artist
Tony Fomison. H.99mm
\$4000-5000

252

Contact period *hei tiki*, *Tangiwai* variety (bowenite)
Modelled with head slightly angled with chin
to left. Red wax inset ring eyes, hands to thighs.
Countersunk hole piercing the forehead. H.97mm
\$2250-3000

253

Small nephrite *hei tiki* H.57mm
\$200-300

254

Folk art *whare whakiro* cased Junghams mantel clock
Case constructed utilising locking mortise techniques
without nails. The *paepae* forming the initial locking
bar. H.140mm
\$200-300



255

Jane Brenkley folk art panel
Carved in relief with a Maori woman carrying a child on her back. The woman with moko to her chin, wearing a feather cloak. Set amongst foliage on a poker-work ground
Signed and dated 1946 verso
240 x 240mm
\$1000-2000

256

A rare carved folk art stool by Jane Brenkley
The circular top with an embracing Maori couple, the carving inspired by the model pah at Whakarewarewa. The figures framed by wheku heads and spiral carving. Raised on three legs with pokerwork and painted floral decoration
D.300mm, H.360mm
\$2000-4000

257

A carved kauri folk art occasional table by Jane Brenkley
The top carved with a Maori family with kuri dog, portrayed in a landscape beside a river with carved whare and pataka in the background. Raised on a carved tekoteko figural pedestal with open mouth, protruding tongue and hands to thighs
H.570mm, W.550mm
\$6000-8000

258

20th century candlewick cloak
With black woollen thrums and colourful woollen embroidery along with borders and bands of feathers
870 x 1170mm
\$1000-1500

259

Carved kauri gum portrait bust of a Maori chief
H.100mm
\$250-350

260

Carved kauri gum head of a Maori chief
H.90mm
\$250-350

261

Carved wood koruru mask
Red ochre painted and with open mouth and protruding tongue and inset paua shell eyes 300 x 240mm
\$200-400

262

Carved kauri wheku head plaque by Rangi Stevens 230 x 190mm
\$100-200

263

Colonial New Zealand native timbers glove box
With star-burst pattern inlaid to the lid, incorporating puriri, matai, rewarewa and other native timbers in a pattern on a back-ground of burr totara and with kauri carcase W.280mm
\$1200-1800

264

Colonial New Zealand native timbers glove box
In burr totara with inlaid lozenge pattern to the lid. The lid interior with unusual shell and fan carving
W.300mm
\$1500-2000

265

Colonial burr totara sewing box W.330mm
\$600-800



263



264



259



260



262

266

Well proportioned kauri colonial scotch chest by William Norrie
 With central hat draw framed in rewarewa, flanked by four small drawers veneered in burr tiotara above three mottled kauri full width drawers
 Original escutcheons and ring handles
 Raised on a platform base on bun feet terminating in castors
 H.1260mm, W.1140mm
\$8000-12000

267

Colonial kauri writing compendium
 In the manner of a small proportioned fall front bureau
 With upper section shelf, the fall opening to reveal a fitted interior and with four full width drawers in mottled kauri with brass ring handles
 H.660mm, W.440mm
\$2800-3400

268

Colonial kauri apprentice dressing table
 The superstructure with small mirror held on carved supports above two drawers with figured fascias and copper ring handles. The lower section with two small drawers above two full width drawers with burr totara fascias and copper Art Nouveau inspired handles. Raised on peg form feet
 H.630mm, W.450mm
\$1500-2000

269

Kauri pare (doorway lintel)
 Carved in low relief with interlocking manaia figures
 W.1150mm, H.400mm
\$1000-1500

270

Carved kauri pou panel, carved in low relief with a mania, 1220 x 280mm
\$800-1200

271

A good William Norrie colonial cabinet of small proportions, with figured kauri top, the paneled doors framed in rewarewa and with an inlaid lozenge pattern in matai, white maire, puriri, rewarewa and other native timbers on a burr totara ground
 The interior with four drawers with veneered fascia in puriri, rewarewa, burr totara and mottled kauri
 The interior of each drawer liner inscribed in Norrie's hand in pencil with a key to the veneered fascias. In excellent original condition
 H.360mm, W.280mm
\$4000-6000

272

A colonial document box in an unusual combination of New Zealand and Australian native timbers
 Extensively inlaid in geometric and lozenge patterns in numerous timbers on a cedar and kauri ground
 With heart shaped escutcheon, with original key
 W.360mm
\$800-1200

273

A colonial wine table by Anton Seuffert
 The circular top with geometric inlaid starburst pattern radiating out from a central star
 In matai, burr totara, puriri, mottled kauri, rewarewa and numerous other native timbers, framed by a basketweave pattern in rewarewa, further inlaid in various panels to the border
 Thumb moulded outside edge
 Raised on an associated column pedestal base with three scroll legs
 D.580mm, H.750mm
\$30000-40000

274

A colonial spade back chair in rimu with rewarewa seat and caned insert
 Raised on baluster turned legs
 Illustrated Antiques, Art & Collectables in New Zealand, Ross James Edney, page 135
\$500-600

275

A kauri hall chair
 Gothic inspired with pierced arched panels to the back
 The seat with anted corners, raised on baluster turned legs
\$400-600

276

A kauri occasional table
 With circular top raised on baluster turned tripod base
\$600-900



271



268

255

267



266



273



277

Wedgwood Clarice Cliff Bizarre House and Bridge plate,
with authenticity certificate

\$70-110

278

Wedgwood Clarice Cliff Bizarre Orange House plate,
with authenticity certificate

\$70-110

279

Wedgwood Clarice Cliff Bizarre Orange Roof Cottage
plate, with authenticity certificate

\$70-110

280

Wedgwood Clarice Cliff Bizarre Fantásque Mountain
plate, with authenticity certificate

\$70-110

281

Wedgwood Clarice Cliff Bizarre
Poplar plate

With authenticity certificate

\$70-110

282

Wedgwood Clarice Cliff Bizarre
Farmhouse plate

With authenticity certificate

\$70-110

283

Early 19th Century Biedermeier cherrywood settee
With cane seat and pierced fret work back splat with
gold embossed boarder raised on tapering legs. c. 1820

\$1900-2200

284

Terra cotta urn pedestal
modelled naturalistically with acanthus, ferns
and toadstools issuing from a rocky base

\$800-1200

Notes

This image shows a single sheet of white paper with horizontal ruling lines. The lines are evenly spaced and run across the width of the page. There are no margins, text, or other markings on the paper.

Subscribe to ART+OBJECT catalogues

A+O produces industry leading auction catalogues, complete with superb photography, insightful essays and news. Over time these become an important archive of auction events and important art and objects. An A+O subscription guarantees you a minimum of 6 catalogues per annum delivered to your preferred address. Subscribe today to ensure you stay informed and receive the best catalogues from the 21st Century auction house.



A+O catalogues will quickly become industry leading records containing superb photography and thought provoking essays from many of today's most respected art and object critics and historians.

An annual subscription guarantees a minimum of six catalogues covering Contemporary art and objects, photography, modern design, artefacts, antiques and popular culture + surprise special sales.

Auction catalogues – subscription rates include gst and postage:

New Zealand \$100.00

Australia \$160.00

Rest of the world (airmail fastpost) \$275.00

MR/MRS/MS: _____ SURNAME: _____

POSTAL ADDRESS: _____

STREET ADDRESS: _____

BUSINESS PHONE: _____ MOBILE: _____ FAX: _____

EMAIL ADDRESS: _____

Please find my cheque enclosed ☐ (tick box) or charge my Visa ☐ Mastercard ☐

Card number: _____ Expiry date: _____

Post with cheque to ART+OBJECT, PO Box 68-345 Newton, Auckland 1145, New Zealand.

Fax with credit card details to +64 9 354 4645. Download this form from www.artandobject.co.nz

ART+OBJECT 3 Abbey Street, Newton, Auckland, New Zealand. Telephone +64 9 354 4646, Freephone 0800 80 60 01

ART
OBJECT
THE 21st CENTURY
AUCTION HOUSE

ART+OBJECT Absentee Bidding Instructions for absentee bidders at ART+OBJECT'S auctions

Bidding No. No. 9, 24 October 2007: Sulu Gallery
 No. 10, 25 October 2007: New Collectors
 No. 11, 8 November 2007: Manson Estate/Omni

This completed and signed form authorizes ART+OBJECT to bid on my behalf at the above mentioned auction(s) for the following lots up to prices indicated below. These bids are to be executed at the lowest price levels possible. I understand that if successful I will purchase the lot or lots at or below the prices listed on this form and the listed buyers premium for this sale (12.5%) and GST on the buyers premium. I warrant also that I have read and understood and agree to comply with the conditions of sale as printed in the catalogue.

No.9, 24 October 2007: Sulu Gallery			No.10, 25 October 2007: New Collectors			No.11, 8 November 2007: Manson Est./Omni		
Lot no.	Description	Bid max	Lot no.	Description	Bid max	Lot no.	Description	Bid max
_____	_____	_____	_____	_____	_____	_____	_____	_____
_____	_____	_____	_____	_____	_____	_____	_____	_____
_____	_____	_____	_____	_____	_____	_____	_____	_____
_____	_____	_____	_____	_____	_____	_____	_____	_____
_____	_____	_____	_____	_____	_____	_____	_____	_____
_____	_____	_____	_____	_____	_____	_____	_____	_____
_____	_____	_____	_____	_____	_____	_____	_____	_____
_____	_____	_____	_____	_____	_____	_____	_____	_____

Payment and Delivery ART+OBJECT will advise me as soon as is practical that I am the successful bidder of the lot or lots described above. I agree to pay immediately on receipt of this advice. Payment will be by cash, cheque or bank transfer. I understand that cheques will need to be cleared before goods can be uplifted or dispatched. I will arrange for collection or dispatch of my purchases. If ART+OBJECT is instructed by me to arrange for packing and dispatch of goods I agree to pay any costs incurred by ART+OBJECT. Note: ART+OBJECT requests that these arrangements are made prior to the auction date to ensure prompt delivery processing.

Please indicate as appropriate by ticking the box: PHONE BID ☐ ABSENTEE BID ☐

MR/MRS/MS: _____ SURNAME: _____

POSTAL ADDRESS: _____

STREET ADDRESS: _____

BUSINESS PHONE: _____ MOBILE: _____ FAX: _____ EMAIL: _____

Signed as agreed: _____

To register for Absentee bidding this form must be lodged with ART+OBJECT prior to the published sale time in one of three ways:

1. Fax this completed form to ART+OBJECT +64 9 354 4645
2. Email a printed, signed and scanned form to: info@artandobject.co.nz
3. Post to ART+OBJECT, PO Box 68-345 Newton, Auckland 1145, New Zealand

ART+OBJECT Conditions of Sale

Please note it is assumed that all bidders at auction have read and agreed to the conditions described on this page. ART+OBJECT directors are available during the auction viewing to clarify any questions you may have.

1 Registration Only registered bidders may bid at auction. You are required to complete a bidding card or absentee bidding form prior to the auction giving your correct name, address and telephone contact and supplementary information such as email addresses that you may wish to supply to ART+OBJECT.

2 Bidding The highest bidder will be the purchaser subject to the auctioneer accepting the winning bid and any vendor's reserve having been reached. The auctioneer has the right to refuse any bid. If this takes place or in the event of a dispute the auctioneer may call for bids at the previous lowest bid and proceed from this point. Bids advance at sums decreed by the auctioneer unless signaled otherwise by the auctioneer. No bids may be retracted. The auctioneer retains the right to bid on behalf of the vendor up to the reserve figure.

3 Reserve Lots are offered and sold subject to the vendor's reserve price being met.

4 Lots offered and sold as described and viewed ART+OBJECT makes all attempts to accurately describe and catalogue lots offered for sale. Notwithstanding this neither the vendor nor ART+OBJECT accepts any liability for errors of description or faults and imperfections whether described in writing or verbally. This applies to questions of authenticity and quality of the item. Buyers are deemed to have inspected the item thoroughly and proceed on their own judgment. The act of bidding is agreed by the buyer to be an indication that they are satisfied on all counts regarding condition and authenticity.

5 Buyers premium The purchaser by bidding acknowledges their acceptance of a buyers premium of 12.5% + Gst on the premium to be added to the hammer price in the event of a successful sale at auction.

6 ART+OBJECT is an agent for a vendor A+O has the right to conduct the sale of an item on behalf of a vendor. This may include withdrawing an item from sale for any reason.

7 Payment Successful bidders are required to make full payment immediately post sale – being either the day of the sale or the following day. If for any reason payment is delayed then a 20% deposit is required immediately and the balance to 100% required within 3 working days of the sale date. Payment can be made by Eftpos, bank cheque or cash. Cheques must be cleared before items are available for collection. Credit cards are not accepted.

8 Failure to make payment If a purchaser fails to make payment as outlined in point 7 above ART+OBJECT may without any advice to the purchaser exercise its right to: a) rescind or stop the sale, b) re offer the lot for sale to an underbidder or at auction. ART+OBJECT reserves the right to pursue the purchaser for any difference in sale proceeds if this course of action is chosen, c) to pursue legal remedy for breach of contract.

9 Collection of goods Purchased items are to be removed from ART+OBJECT premises immediately after payment or clearance of cheques. Absentee bidders must make provision for the uplifting of purchased items (see instructions on the facing page)

10 Bidders obligations The act of bidding means all bidders acknowledge that they are personally responsible for payment if they are the successful bidder. This includes all registered absentee or telephone bidders. Bidders acting as an agent for a third party must obtain written authority from ART+OBJECT and provide written instructions from any represented party and their express commitment to pay all funds relating to a successful bid by their nominated agent.

11 Bids under reserve & highest subject bids When the highest bid is below the vendor's reserve this work may be announced by the auctioneer as sold 'subject to vendor's authority' or some similar phrase. The effect of this announcement is to signify that the highest bidder will be the purchaser at the bid price if the vendor accepts this price. If this highest bid is accepted then the purchaser has entered a contract to purchase the item at the bid price plus any relevant buyers premium.

Important advice for buyers

The following information does not form part of the conditions of sale, however buyers, particularly first time bidders are recommended to read these notes.

(a) Bidding at auction Please ensure your instructions to the auctioneer are clear and easily understood. It is well to understand that during a busy sale with multiple bidders the auctioneer may not be able to see all bids at all times. It is recommended that you raise your bidding number clearly and without hesitation. If your bid is made in error or you have misunderstood the bidding level please advise the auctioneer immediately of your error – prior to the hammer falling. Please note that if you have made a bid and the hammer has fallen and you are the highest bidder you have entered a binding contract to purchase an item at the bid price. New bidders in particular are advised to make themselves known to the sale auctioneer who will assist you with any questions about the conduct of the auction.

(b) Absentee bidding ART+OBJECT welcomes absentee bids once the necessary authority has been completed and lodged with ART+OBJECT. A+O will do all it can to ensure bids are lodged on your behalf but accepts no liability for failure to carry out these bids. See the Absentee bidding form in this catalogue for information on lodging absentee bids. These are accepted up to 2 hours prior to the published auction commencement.

(c) Telephone bids The same conditions apply to telephone bids. It is highly preferable to bid over a landline as the vagaries of cellphone connections may result in disappointment. You will be telephoned prior to your indicated lot arising in the catalogue order. If the phone is engaged or connection impossible the sale will proceed without your bidding. At times during an auction the bidding can be frenetic so you need to be sure you give clear instructions to the person executing your bids. The auctioneer will endeavour to cater to the requirements of phone bidders but cannot wait for a phone bid so your prompt participation is requested.

Index of Artists

ARTIST	LOT NO.		
Artist unknown	1,2,84	Bill Hammond and Gavin Chilcott	120
Gretchen Albrecht	19, 138	Pat Hanly	7, 11,23, 99, 133
Arthur A. Bender	124	Jeffrey Harris	15,16
Peter Blake	53	Paul Hartigan	45
Don Binney	6,9, 111	Louise Henderson	47, 116
Helen Brown	40	Ivan Hill	136
Nigel Brown	34, 88, 89, 92	John Horner	94, 95
George Chance	77, 79, 80	Ralph Hotere	105, 106, 113
Gavin Chilcott	43	Hayden Jarrett	55, 56
Phil Clairmont	112, 131	Emily Karaka	33
Les Cleveland	69, 70, 71, 72, 73, 74, 75	Marcus King	4
Peter Cleverley	17	Richard Killeen	108
Ruth Cole	48	Dennis Knight-Turner	35, 37, 38
Graham Cornwall	128	Tony Lane	41,51
Roy Cowan	44	Edward. B Lattey	127
Tony de Lautour	42	NZ Tourism Dept	3, 5, 8, 78
Ellis Dudgeon	86	A McMaster	83
Anah Dunsheath	49	Kathryn Madill	24
Victoria Edwards	54	Allen Maddox	31,52
Robert Ellis	101	L. Maftai	58
Tom Esplin	22	Colin McCahon	119
Tony Fomison	129	Quentin McFarlane	93
Dick Frizzell	18, 27, 28, 98	Mary McIntyre	121
Max Gimblett	12	Charles McPhee	135
James Walter Gozzard	57	Trevor Moffitt	20
Gail Haffern	96	R.P. Moore	62
Hall	81	John L. Moore	87
Bill Hammond	10, 109	Elise Mourant	39
		Russell Moses	91
		Tom Mutch	118
		Jan Nigro	36
		Els Noordhof	130
		Stanley Palmer	46
		Panora Studio	63
		Sally Papps	25,26
		Fiona Pardington	65, 66, 67
		Katey Pittwood	68
		Patrick Pound	59, 60, 61
		John Pule	21, 102, 104, 114
		Shona Rapira-Davies	122
		Ian Scott	14
		Wayne Seyb	13
		Peter Siddell	29
		Olivia Spencer-Bower	126
		Peggy Spicer	123
		Terry Stringer	30
		Marte Szirmay	134
		Tamarind lithographs	132
		Kura Te Waru-Rewiri	137
		Alan Taylor	103
		Riduan Tomkins	125
		Roger Twiname	97
		Gary Waldrom	50
		Gordon Walters	100, 107
		John Weeks	32
		Robin White	110
		Mervyn Williams	117
		Toss Woollaston	115
		Whites Aviation	85
		John Buckland Wright	90



