

THE JIM DRUMMOND SALE

THE PERSONAL HISTORY OF
A VISIONARY COLLECTOR

TWO DAY AUCTION IN FIVE SESSIONS:
SAT 2ND & SUN 3RD MAY

Twenty - four years ago Jim Drummond opened his antique store on Auckland's Anzac Avenue, but his passion for the work he would sell there was established long before.

The son of one of Crown Lynn pottery's chief engineers, Drummond grew up around the Crown Lynn site and developed his collector's eye early on. But it was the weirder, wackier items, those that other people weren't so interested in, that Drummond was always particularly drawn to.

In the years that followed, interest in the 'weird and wacky', in kiwiana, kiwi folk art and those unassuming pots and jugs from our childhood (or that of our parents) grew exponentially within New Zealand, and Drummond's Antiques was to become an Auckland institution, frequented by bargain hunters and serious collectors alike. With the closure of the store, Drummond is also parting with his own personal cumulation, giving connoisseurs the opportunity to view and buy work that a less discerning eye may have thrown away or otherwise neglected years ago.

While involving an ample selection of brickworks, maritime material, Depression - era furniture and much more, Drummond's collection is especially notable for its extensive array of studio ceramics. In particular, Crown Lynn pottery – to be expected given Drummond's upbringing – and Titian ware.

Of Crown Lynn little needs to be said. Established in Waitakere in 1948, importation restrictions enforced at the time allowed their production of domestic ware to flourish, resulting in virtually every kiwi household harbouring a liberal share.

The Titian Studio, in turn, benefited both from the continued restrictions and from the significant inroads Crown Lynn had made. Based in West Auckland, Titian was set up by Cameron and Dorothy Brown in around 1958 following their discontinuation of the Sherwood Pottery brand. As with many Crown Lynn designs (such as David Jenkin's swans, examples of which can be found here) many Titian designs were based upon ceramics found overseas. But Titian forms were often given a New Zealand twist, as in the case of the 'wahine' Toby mugs, which now lends them extra appeal as unpretentious kiwi artefacts.

But these are not the only ceramic treasures to be found in Drummond's collection. Examples of earlier potters: Jovan Rancich, the flamboyant Serbian - born maker, or Briar Gardner, with her experimental glazes, are just two examples of the New Zealand ceramic icons represented here.

Whether taken as a whole or disbanded, as it will shortly be, Drummond's collection creates a snapshot of New Zealand's history – a familiar and reassuring domestic history easily translated into contemporary surroundings. Thanks to Drummond's foresight these tokens of our past can now enjoy renewed appreciation in new homes.

JOANNA TREZISE



Left: Unknown carver Fireplace surround as a pare and whakawae, c.1880. (detail) \$15 000 - \$25 000

LOCATION: 3 ABBEY STREET, NEWTON, AUCKLAND

DAY 1 SATURDAY 2 MAY 10 AM TO 6PM

SESSIONS 1, 2 & 3

Session 1: [The Garage Sale]

Includes approx 300 uncatalogued and unreserved box lots (Drummond Antiques shop stock).

Note: This session will be conducted in the A+O carpark – entrance from Gundry Street.

COLLECTION: BOX LOTS MUST BE PAID FOR AND COLLECTED ON THE AUCTION DAY

10am to 12 noon*

1

Session 2: [The Jim Drummond Personal Collection Part 1]

lots 1 to 299 in this catalogue – the auction will resume upstairs in the main gallery.

12 noon to 3pm*

2

Session 3: [Stock in trade from Drummond's Antiques. Part 1]

Catalogued stock formerly from Drummond's Antiques, Anzac Avenue, Auckland

lots 500 to 900 approx

Note: items offered in this session are detailed on a separate catalogue

available online at www.artandobject.co.nz or at A+O reception.

3pm to 6pm*

3

DAY 2 SUNDAY 3 MAY 10 AM TO 5PM

SESSIONS 4 & 5

Session 4: [Stock in trade from Drummond's Antiques. Part 2]

lots 900 to 1764.

Note: items offered in this session are detailed on a separate catalogue

available online at www.artandobject.co.nz or at A+O reception.

10am to 3.30pm*

4

Session 5: [The Jim Drummond Personal Collection Part 2]

lots 1765 to 1900 in this catalogue.

3.30pm to 5pm*

5

*times are approximate

SATURDAY	25 APRIL	ANZAC NO VIEWING
SUNDAY	26 APRIL	11 AM – 4PM
MONDAY	27 APRIL	9AM – 5PM
TUESDAY	28 APRIL	9AM – 5PM
WEDNESDAY	29 APRIL	9AM – 5PM
THURSDAY	30 APRIL	9AM – 5PM
FRIDAY	1 MAY	9AM – 5PM
SATURDAY	2 MAY	LIMITED VIEWING
SUNDAY	3 MAY	LIMITED VIEWING

VIEWING

Note: The A+O carpark will be closed during the viewing of the Jim Drummond Auction

THE JIM DRUMMOND COLLECTION

SESSION 2 (PRECEDED BY THE SALE OF 300 BOX LOTS, SEE TITLE PAGE FOR FULL DETAILS)

- 1
Crown Lynn unique 'Experimental' series hand potted ovoid bottle vase. With small lathe turned neck. Black/grey glaze with random small slashes cut through the overglaze to reveal a white underglaze.
Stamp mark
\$400 - \$500
- 2
Crown Lynn unique 'Experimental' series hand potted squat spherical vase. With short neck, decorated with encircling bands of marine blue overlaid in brush point with finely trailed tangerine lines. Gilded at the rim. (small chip to gilt). Crown Lynn gilt mark.
\$300 - \$500
- 3
Crown Lynn unique 'Experimental' series hand potted mallet bodied vase.
With cream white exterior and grey/black interior at the mouth. Crown Lynn 'tiki' stamp
\$350 - \$450
- 4
Crown Lynn unique 'Experimental' series hand potted mallet bodied vase.
With slender neck. Egg yolk glazed exterior and grey/black interior at the mouth. Incised number 10
\$350 - \$450
- 5
Rare Crown Lynn white gloss glazed Hand Potted ovoid vase.
\$140 - \$180
- 6
Crown Lynn Hand Potted lathe turned beaker vase
\$100 - \$150
- 7
Another as above but with Mayfair label affixed
\$100 - \$150
- 8
Large Crown Lynn Hand Potted straight sided Shape 3 vase with lathe turned bands at rim.
\$600 - \$800
- 9
Ernest Shufflebotham for Crown Lynn Hand Potted vase, pale apricot, ovoid with lathe turning. Shape 59. Tiki mark.
\$400 - \$600
- 10
Ernest Shufflebotham for Crown Lynn Hand Potted vase, pale duck egg blue beaker shape. Shape 21. Shield mark.
\$300 - \$500
- 11
Ernest Shufflebotham for Crown Lynn Hand Potted vase, matt white mallet shape with flared mouth. Shape c.15. Printed mark.
\$300 - \$400
- 12
Ernest Shufflebotham for Crown Lynn Hand Potted vase, cylindrical with lathe turning. Shape 61. Tiki mark.
\$400 - \$600
- 13
Pair of Crown Lynn Wharetana Ware Bookends modelled as moko mokai.
Numbered 1019
\$4000 - \$6000
- 14
Pair of Crown Lynn Wharetana Ware bookends modelled as seated tiki figures with hands clasped to abdomen. Repair to base of one. Numbered 1020
\$600 - \$1000
- 15
Frank Carpay for Crown Lynn (Handwerk) small ceramic stoppered bottle.
painted with a simplified nude 'Eve'. Whilst rare one complete with 'hat' stopper is exceptionally so, additionally this example with original cork. Hairline crack at rim
\$3500 - \$4000
- 16
Small Crown Lynn model of a swan
Impressed number 134. Matt white with rare painted beak and eyes
\$70 - \$100
- 17
Crown Lynn medium sized (rare) model of a swan. Moulded number 2147. Satin white glaze (Produced for only one year approx)
\$400 - \$600
- 18
Crown Lynn 'Mk1' large swan vase
Dribble glazed in turquoise. Impressed number 170
\$500 - \$700

- 19
Titian Studios bottle vase shaped table lamp.
decorated with three rock art inspired figures in earth colours. Original period shade.
\$150 - 250





the grummond personal collection session 1



28



16



17



21



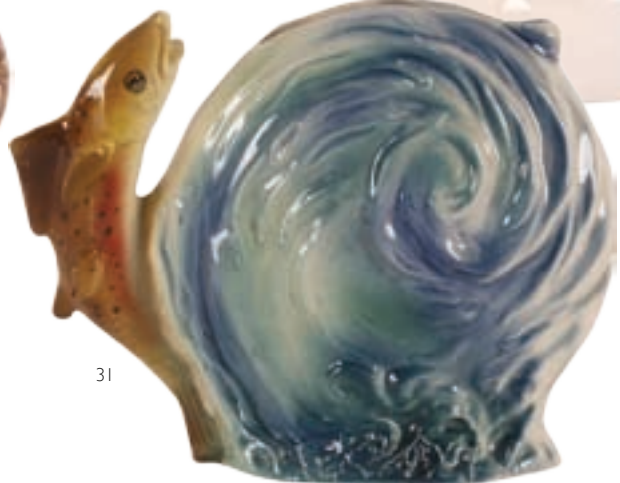
22



23



24



31



20



29



32



35

20
Aquila Ware model of a seal. 1970s.
Manufacturer's mark and Hand Decorated,
Andre.
Exhibited Titian Studioware: the ceramic art
of Cameron Brown. Auckland War Memorial
Museum. 2004. Curated by Mary Morrison.
\$250 - \$450

21
Titian Studios oval plate hand painted with a
portrait of Kewene Te Haho
This work and the following three plates appear
to have drawn the subjects from works by
Gottfried Lindauer in the Auckland City Art
Gallery collection. The Titian Studios artist is
thought to have been Mary Bailey.
Exhibited Titian Studioware: the ceramic art
of Cameron Brown. Auckland War Memorial
Museum. 2004.
\$450 - \$650

22
Titian Studios oval plate hand painted with a
portrait of Pare Watene
Exhibited as above
\$450 - \$650

23
Titian Studios oval plate hand painted with
an unnamed portrait, possibly Pare Watene.
Exhibited as above
\$450 - \$650

24
Titian Studios oval plate hand painted with an
unnamed portrait of a woman with tobacco
pipe. Exhibited as above
\$450 - \$650



25
Titian Studios wall pocket modelled as a yellow
rose
\$120 - \$160

26
Titian Studios wall vase modelled as acanthus
leaf. Green slash mark
\$80 - \$100

27
Titian Studios mug, decorated with picture of
Sid Holland, and epithet Sid's Mug. The interior
with a spider painted to the base. [he swallowed
the spider to catch the fly...]
Exhibited Titian Studioware: the ceramic art
of Cameron Brown. Auckland War Memorial
Museum. 2004.
\$150 - \$250

28
Titian Studio Sun and Palm Tree 'vase'
Modelled with one of the palm leaves as an
incipient handle to allow classification as utility
ware therefore attracting reduced sales tax. See
Lambert pg.111.
Exhibited Titian Studioware: the ceramic art
of Cameron Brown. Auckland War Memorial
Museum. 2004.
\$800 - \$1200

29
Rare Titian Studio model of a Palomino horse.
Possibly the only extant model of this horse.
Problems with slumping during firing caused
most of the small run to be discarded. Impressed
mark
\$1500 - 2000

30
Titian Studio Wahine Toby Jug
With red headscarf and green blouse
Exhibited Titian Studioware: the ceramic art
of Cameron Brown. Auckland War Memorial
Museum. 2004.
\$400 - \$500

31
Titian Studio Rainbow Trout 'vase'
The body of this vase/jug formed by a circular
river eddy. The fish as an incipient handle to allow
classification as utility ware therefore attracting
reduced sales tax. See Lambert pg.111.
Raised moulded 'palette' mark.
Restoration to fins
\$400 - \$600

32
Titian Studio Leaping Rainbow Trout Ashtray
(after Beswick Potteries). Impressed mark.
Exhibited Titian Studioware: the ceramic art
of Cameron Brown. Auckland War Memorial
Museum. 2004.
\$500 - \$700

33
Titian Studio Wahaika club shaped dish. With
moulded weku head handle. Transfer decorated
with a kiwi and egg to the bowl.
\$100 - \$150

34
Titian Studio multiple mouthed vase.
Modelled as daffodils issuing from a double
course of red bricks.
Green 'slash' and sgraffito incised mark
\$250 - \$350

35
Titian Studio Wahaika shaped dish.
With hand coloured transfer decoration
inscribed Maori Warrior
Green 'slash' and sgraffito incised mark .
\$100 - \$150

36
Titian Studio tata (bailer) shaped souvenir
dish. Transfer decorated with a leaping marlin.
Moulded posterior rim. Marked S.103
\$60 - \$80

37
Titian Studio kidney shaped dish
decorated with a leaping marlin on inky black
ground
\$60 - \$90

38
Titian Studio pottery mug with ashtray lid
modelled as a barrel decorated with a transfer
Maori Warrior
\$80 - \$100

39
Uncommon Titian Studio pottery mug
tapering cylindrical shape decorated with a
raised portrait of a Maori rangatira
\$100 - \$150

40
Uncommon Titian Studio pottery mug
for Auckland International Airport 29/1/66
(opening)
\$80 - \$100

41
Titian Studio large mug
Transfer decorated with a galleon and verso
with mallard ducks. factory label affixed and
impressed marks.
\$40 - \$60

42
Titian Studio for Presly Giftwares black
glazed ikebana vase. Oval shape on four feet.
Presleyware sticker affixed
\$50 - \$70

43
Titian Studio ikebana vase, shaped as above.
Matt grey glaze
\$50 - \$70

44
Titian Studio ovoid shoulder vase
brush point wheel banded decoration in muted
blue/grey/lilac tones. Numbered V.121
\$100 - \$120

45
Titian Studio strap leaf vase
With airbrush technique patterned surface
Numbered T.103
\$60 - \$80

46
Titian Studio campana shaped vase
Crackled purple lustre glazed. Impressed V.112
\$60 - \$80



48

47
Titian Studio ewer vase with 'Stone Henge' glaze. Decorated with Egyptian scenes and hieroglyphs. Impressed mark.
\$100 - \$150

48
Rare Titian Studio oblong dish Moulded and painted with Maui (in a clinker dinghy) fishing up Aotearoa, framed by handles moulded as giant petrels. slight crazing
\$400 - \$600

49
Titian Studio small oval dish moulded with Rangitoto viewed beneath the Auckland Harbour Bridge. Numbered S.110
\$60 - \$100

50
Titian Studio elliptical bowl in Stone Henge glaze decorated with airbrushed rock art drawings of wildlife. Numbered B.116
\$60 - \$80

51
Titian Studio two handled bowl (Greek kylix shape), decorated with Egyptian scenes and a border of raised oblong bosses. Impressed factory mark
\$200 - \$250

52
Titian Studio souvenir ashtray decorated with Palmerston North town clock
\$30 - \$40

53
Titian Studio souvenir ashtray inscribed Kia Ora from Te Puia Springs Hotel
\$30 - \$40

54
Titian Studio souvenir ashtray inscribed Souvenir of Tokomaru Bay. Exhibited Titian Studioware: the ceramic art of Cameron Brown. Auckland War Memorial Museum. 2004.
\$40 - \$60

55
Titian Studio scalloped edged small bowl inscribed Kia Ora from New Plymouth
\$30 - \$40



66

56
David Jenkin design for Titian Studio 'Swoose' wall vase. Swan -goose combination Numbered WV.104
\$100 - \$150

57
Titian Studio small cream 'Swoose' jug Yellow glazed, with bird's head handle
\$30 - \$40

58
Titian Studio oval two handled bowl Lustre glazed, transfer decorated with a song bird, (chips to base) along with another with a budgerigar. Marked KD.100

59
Titian Studio oval dish moulded and handpainted with a view of Rangitoto Island beneath the Auckland Harbour Bridge Numbered S.109
\$200 - \$250

60
Titian Studio plate 'Souvenir of New Zealand' blue printed pastiche of Maori, landscapes, etc. Marked for Souvenirs - En - Gros, dated 1963
\$100 - \$150

61
titian Studio ovoid shoulder vase, moulded floral decoration in imitation of slip trailing, under midnight blue glaze. Numbered KV.103



67

62
Titian Studio lamp base Inverse baluster shape decorated in brush point simulated marble
\$120 - \$150

63
Pair of Titian Studio small campana shaped urn vases. With leather black and white crackle glaze
\$150 - \$200

64
Titian Studio matt white campana shaped urn vase. Numbered PB.101
\$50 - \$60

65
Titian Studio airbrushed cylindrical bottle shaped table lamp base. With original period shade
\$80 - \$100

66
Very rare Titian Studio lime green and silver lustre glazed small size Hubble Bubble lamp base
\$300 - \$400

67
Very rare Titian Studio acid yellow and silver lustre glazed small size Hubble Bubble lamp base
\$300 - \$400

68
Titian Studio sanitary ware bathroom décor set Comprising wall shelf, toothbrush holder, soap dish and towel rail brackets. All colour transfer decorated with exotic fish and seaweeds
\$400 - \$600



77



73

69
Titian Studio ashtray with sgraffito kiwi and Kia Ora from Te Puia Springs Hotel. Affixed label.
\$30 - \$40

70
Titian Studio tata (bailer) shaped dish. Transfer and hand painted Maori Chief, NZ. Impressed S.103
\$60 - \$80

71
Titian Studio Wakaika shaped dish. Decorated with moulded weku head handle, plain graduated celadon bowl.
\$70 - \$90

72
Titian Studio 'pounamu' glazed ashtray. Moulded as a weku head with extended tongue. Brush point 'slash' mark incised Titian NZ.
\$200 - \$300

73
Titian Studios Waka. Inscribed Maori War Canoe. Pre Crown Lynn takeover period
\$375 - \$525

74
Titian Studios Waka. Brush point 'slash' mark with sgraffito 'Titian, New Zealand'
\$375 - \$525

75
Titian Studio baluster shaped vase with faux woodgrain finish. Impressed marks and nuber V110
\$200 - \$250

76
Titian Studio vase shaped table lamp with fluted walls. Vermillion semi - lustre glazed
\$100 - \$150

77
Titian Studio cup and saucer/plate combination 'Rock art' decorated on 'stone henge' glazed ground
\$100 - \$150



90

78
Titian Studio vase shaped table lamp decorated with transfer of dandelion flowers and seed head, on a midnight blue ground. Mounted on a spun and pressed copper base
\$300 - \$400

79
Titian Studio oval hand painted plate Possibly by Mary Bailey. Decorated with anentitled Tropical Fish, Fiji.
\$250 - \$350

80
Titian Studio mallet bodied lamp base. Powder pink glaze with gilt brush point floral decoration. Original Gaylite sticker to base.
\$100 - \$150

81
Titian Studio 'modern' lamp base. Acid green coloured 'orange peel' glaze. Incised mark and Gaylite sticker. Exhibited Titian Studioware: the ceramic art of Cameron Brown. Auckland War Memorial Museum. 2004. Hairline crack to foot.
\$400 - \$500

82
Titian Studio vase, moulded leaf shape. Cream 'orange peel' glaze. Incised mark as above
\$50 - \$70

83
Titian Studio ewer vase. Moulded to the wall with roses. Incised mark as above
\$90 - \$140

84
Titian Studio baluster shaped vase with trumpet mouth. With raised decoration of grape vines. Incised mark as above
\$80 - \$130

85
Titian Studio small bowl with handcut pierced and moulded leaf patterned rim. Incised mark as above
\$50 - \$90



92



81

86
Titian Studio leaping blue marlin ornament
\$300 - \$4000

87
Titian Studio campana urn vase. White 'orange peel' glaze. Impressed number 593
\$100 - \$150

88
Late Titian 'Forest ware' model of a Japanese geisha Modelled performing a fan dance. English floral transfer decorated. Printed mark
\$80 - \$100

89
Late Titian 'Forest ware' model of a puppy Printed mark
\$50 - \$90

90
Rare Titian Studio vase Moulded to the disc walls with goldfish. Modelled with incipient handle and spout to allow classification as utility ware therefore attracting reduced sales tax. See Lambert pg.111.
\$250 - \$350

91
Titian Studio 'Aquila' tankard transfer decorated with lake and mountains and trout. Label affixed.
\$40 - \$50

92
Crown Lynn elephant Trickle glazed maroon over dark brown
\$300 - \$400

93
Crown Lynn elephant trickle glazed dark brown
\$250 - \$300

94 Crown Lynn elephant, golden yellow glazed \$200 - \$250	108 Crown Lynn spaniel as above Airbrushed brown - grey \$100 - \$140	122 Rare early Crown Lynn rabbit model. Fractional numbered, pale blue - green dribble glazed \$250 - \$350
95 Crown Lynn elephant model (smaller) dribble glazed green - yellow \$100 - \$150	109 Crown Lynn spaniel caricature model chasing tail. Airbrushed grey tones \$200 - \$250	123 Rare early Crown Lynn Scottie dog. Fractional numbered. Pale blue - green dribble glazed \$250 - \$350
96 Crown Lynn elephant model. Deco shape, trunk down. airbrushed multi - colour glaze \$250 - \$350	110 Crown Lynn cat caricature model with arched back. Airbrushed grey tones. Impressed 20 - 6 \$200 - \$250	124 Early Crown Lynn Deco shaped bulldog model. Brown dribble glazed \$250 - \$350
97 Crown Lynn elephant model. Deco shape, trunk down, matt white glaze \$200 - \$300	111 Crown Lynn Staffordshire terrier model. Airbrushed brown tones \$200 - \$250	125 Crown Lynn seated donkey model Airbrushed grey tonal glazes. \$200 - \$250
98 Crown Lynn Deco shape horse model. Impressed number 190. Airbrushed powder blue, satin glaze \$200 - \$250	112 Crown Lynn Scottie dog model Impressed number 178. Airbrushed grey tonal \$80 - \$120	126 Crown Lynn seated donkey. Airbrushed blue - plum tonal glazes. Hairline crack \$100 - \$150
99 Crown Lynn Deco shaped horse model Soft brown glaze \$200 - \$300	113 Crown Lynn Scottie dog model. Matt white glaze \$80 - \$120	127 Crown Lynn Study of a Giant Petrel. Airbrushed naturalistic colours \$400 - \$500
100 Crown Lynn Deco shaped horse model gloss white glazed \$200 - \$250	114 Crown Lynn large spaniel. Airbrushed multi - colour tonal \$400 - \$600	128 Crown Lynn triangular faceted ashtray. Dribble brown glazed with dribble green glazed bird perched to the rim \$200 - \$250
101 Crown Lynn Deco shaped fawn model (bambi) Impressed 189. Airbrushed naturalistic colours \$250 - \$300	115 Crown Lynn black glazed Scottie dog model. \$40 - \$50	129 Crown Lynn ashtray as above. Dribble green glazed and golden brown glazed bird \$200 - \$250
102 Crown Lynn Deco shaped fawn. Matt white glaze \$200 - \$250	116 Crown Lynn matt white Scottie dog model \$40 - \$50	130 Rare early Crown Lynn Scottie dog model. Pale green dribble glazed \$250 - \$350
103 Rare Crown Lynn hippopotamus model (Khama). Impressed number 207. Matt white glazed \$400 - \$600	117 Crown Lynn model of two pointer dogs. Multi - coloured airbrushed. Impressed number 179 \$200 - \$300	131 Crown Lynn small model of a swan fractional numbered. Turquoise - green dribble glazed \$130 - \$170
104 Rare Crown Lynn prowling panther model Matt white glaze \$300 - \$400	118 Crown Lynn model of two seated spaniels Naturalistic coloured airbrushed. Impressed number 172 \$150 - \$200	132 Pair of Crown Lynn bookends modelled as polar bears. Fractional numbered. Maroon over green dribble glazed \$400 - \$500
105 Crown Lynn seated spaniel model. Airbrushed tonal greys \$80 - \$120	119 Crown Lynn model of a fawn. Rare colourway graduated naturalistic tones. Impressed 202 \$60 - \$100	133 Crown Lynn beaker vase moulded as bromeliad leaves. Trickle glaze maroon over turquoise. Impressed number 62 and incised fractional numbers. \$80 - \$100
106 Crown Lynn spaniel, modelled lying stretched out.. Airbrushed tonal greys \$150 - \$200	120 Two Crown Lynn Easter egg bunny models, one two - tone airbrush colourway, one matt white \$40 - \$60	134 Crown Lynn beaker vase moulded as bromeliad leaves. Trickle glaze maroon over aple brown. Incised fractional numbers. \$120 - \$180
107 Crown Lynn seated spaniel, head cocked Airbrushed tonal greys \$80 - \$120	121 Crown Lynn kiwi wall vase model. Fractional numbered. Pale blue - green dribble glazed \$100 - \$150	

135

Crown Lynn squat circular vase moulded as palm leaves. Trickle glaze – maroon over pale brown. printed mark
\$100 - \$150

136

Crown Lynn for United States Navy, WWII cereal bowl, plain white glaze
\$100 - \$150

137

Crown Lynn cereal bowl modelled on the above. With green and brown dribble glazes
\$100 - \$150

138

Crown Lynn cereal bowl, with green/brown/purple dribble glazes
\$100 - \$150

139

Crown Lynn ovoid vase. Maroon over golden yellow glaze
\$100 - \$150

140

Crown Lynn slip cast retailers shelf display logo Moulded and gilded with a crown motif and Crown Lynn, New Zealand
\$300 - \$400

141

Crown Lynn unique refrigerator water jug. The typical McAlpine or prestcold moulded name to the side absent. dark blue glaze
\$800 - \$1200

142

Crown Lynn small oblong dish. Decorated with the NZ Post Office Opihi Taniwha 20 cents stamp facsimile and overprinted 'P.O. cancellation' dated 1970
\$60 - \$80

143

Crown Lynn small oblong dish. Decorated with the NZ Post Office Tasman Glacier \$1 stamp facsimile and overprinted 'P.O. cancellation' dated 1970
\$60 - \$80

144

Post production prototype Crown Lynn/Dorothy Thorpe component tazza. Using a salad bowl raised on a ball foot/handle Santa Barbara yellow/white colourway
\$300 - \$500

145

Post production prototype Crown Lynn/Dorothy Thorpe component tazza. Using a dessert bowl raised on a ball foot/handle
\$200 - \$500

146

Crown Lynn, Dorothy Thorpe Pine pattern gravy boat. Hairline crack
\$100 - \$150





147

147

Crown Lynn, Daniel Steenstra hand crafted series ovoid vase, decorated on a treacle brown ground with brushpoint black floral designs

\$400 - \$500

148

Crown Lynn, Ernie Shufflebotham Coronation commemorative two handled mug. Impressed Number 432

\$150 - \$200

149

Crown Lynn, Daniel Steenstra baluster vase handpainted with daffodils

\$150 - \$200

150

no lot

151

Crown Lynn tobacco jar. With original spring fitted, turned kauri lid. Medium brown dribble glazed

\$100 - \$125

152

Crown Lynn fruit bowl. Scalloped rimmed, fluted walled. medium brown dribble glazed

\$80 - \$120

153

Crown Lynn flaring trumpet vase. Impressed number 35 - 8, medium brown dribble glazed

\$100 - \$150

154

Crown Lynn barrel shaped lamp base. With flaring foot, turned kauri cap and brass lamp holder. Medium brown drizzle glazed

\$200 - \$250

155

Crown Lynn swollen cylindrical vase. Golden yellow dribble glazed exterior and green dribble glazed interior. Stamped mark

\$150 - \$200

156

Crown Lynn swollen cylindrical vase. Green over maroon and turquoise dribble glaze. Incised numbers and 'ddd' or 'PPP'

\$175 - \$225

157

Crown Lynn swollen cylindrical vase. Dark green and maroon dribble over light green glaze. Incised numbers and stamped mark

\$175 - \$225

158

Crown Lynn Arts and Crafts style tulip shape vase. Maroon and turquoise treacle glaze. Impressed number 67 and fractional numbers

\$150 - \$175

159

Crown Lynn vase similar to above

\$150 - \$175

160

Crown Lynn mallet bodied lamp base

With ring turned neck and brass lamp holder. Maroon and turquoise treacle glazed

\$200 - \$250

161

Crown Lynn fruit bowl. With scallop rim and fluted walls. Maroon dribble glaze with hints of turquoise. Incised fractional numbers.

\$80 - \$120



177



167



183



189

- 162
Crown Lynn tall tapering cylindrical ewer vase. Moulded to the walls with tulips. Treacle golden brown glazed. Stamped mark
\$150 - \$200
- 163
Crown Lynn deco shaped vase. Ovoid body issuing from a ribbed support base. Treacle golden brown glazed. Stamped mark.
\$150 - \$200
- 164
Crown Lynn Deco shaped vase as above. Treacle golden brown glaze over green. Incised numbers
\$150 - \$200
- 165
Uncommon shaped Crown Lynn tapering barrel shaped vase. With encircling ribs. treacle golden brown over maroon glaze
\$150 - \$200
- 166
Uncommon shape Crown Lynn vase. Ovoid with multiple uniformly ribbed walls, dark brown treacle glaze over golden yellow
\$150 - \$200
- 167
Rare shaped Crown Lynn vase. Ovoid shape with short neck, moulded flowers at the shoulder; uniformly ribbed walls. Dark brown treacle over golden yellow glaze. Impressed no.85 and fractional numbers
\$250 - \$300
- 168
Crown Lynn beaker vase. The walls moulded with spade motifs. Celadon dribble glaze. Incised fractional numbers
\$100 - \$150
- 169
Crown Lynn bottle vase. Incipient handles to the shoulder; ribbed trumpet neck. celadon glazed. Incised fractional numbers
\$100 - \$150
- 170
Crown Lynn baluster shaped vase. Fluted walls and scalloped mouth. Celadon glazed. Incised fractional numbers
\$100 - \$150
- 171
Crown Lynn dark blue glazed Raleigh (bicycles) advertising ashtray
\$40 - \$60
- 172
Pair of Crown Lynn blue dribble glazed tulip shaped salt and pepper
\$30 - \$50
- 173
Crown Lynn swollen cylindrical vase. Lilac over mid - brown dribble glaze. Stamped mark
\$150 - \$200
- 174
Crown Lynn meiping vase. Moulded with strap leaves to the walls. Blue and treacle brown glazed. Original label to the shoulder. Incised no.84
\$150 - \$200
- 175
Crown Lynn vase modelled as a wheat sheaf with ribbon encircling the foot. Dark brown dribble glaze. Impressed no.396
\$100 - \$200
- 176
Crown Lynn baluster shaped ewer vase. Pale golden yellow semi lustre with hand painted foliate decoration. Stamp mark
\$100 - \$150
- 177
Rare shape Crown Lynn Arts & Crafts style vase. Tapering hexagonal section moulded with 'riveted flashings' to the angles. Rare colourway (in imitation of Ruskin high fired wares) purple - lilac dribble glaze. Incised no.4, impressed no.46
\$300 - \$500
- 178
Crown Lynn cereal bowl. Two tone green dribble glaze
\$100 - \$150
- 179
Crown Lynn souvenir ashtray. circular; sepia transfer decorated view of North head and Rangitoto 'Greetings from Auckland NZ'
\$30 - \$50
- 180
Crown Lynn advertising ashtray. circular moulded light blue glazed with TEAL insignia
\$60 - \$80
- 181
Crown Lynn advertising ashtray. Circular; moulded with Onehunga Woollens
\$30 - \$50
- 182
Crown Lynn advertising ashtray. Circular moulded with 'Dalton debs' to centre
\$30 - \$50
- 183
Crown Lynn advertising ashtray for Beechey & Underwood. Modelled with an Art Deco figure of an office worker with monogram B&U on his briefcase, standing on the rear rim
\$180 - \$220
- 184
Crown Lynn advertising ashtray for McAlpine Refrigeration (restoration)
\$60 - \$80
- 185
Crown Lynn advertising ashtray Crown Lynn Potteries Dealer Conference 1962
\$30 - \$40
- 186
Crown Lynn Empire Games 1950 commemorative tankard
\$50 - \$75
- 187
Crown Lynn advertising tankard. '3 Cheers - Drink Laugh & Be Merry' [Quality Spincraft Aluminium Ware]
\$50 - \$75
- 188
Rare Crown Lynn Air New Zealand [Knows the South Pacific Best] on - board cocktail beaker. Red brown glaze. incised decoration of Islander portraits and tiki heads
\$80 - \$100
- 189
Uncommon Crown Lynn Air New Zealand [Knows the South pacific Best] on board cocktail beaker. Incised decoration of resort landscapes. Golden yellow glaze
\$50 - \$70
- 190
Crown Lynn small tulip vase. Pale celadon glaze. Moulded around the foot with sinuous curlicles
\$30 - \$50
- 191
Crown Lynn '20 year Club' cup. Individually named and numbered in gilt
\$40 - \$60
- 192
Crown Lynn bisque ovoid vase. Hand painted by Ivy Williams with a hibiscus flower
\$80 - \$100
- 193
Crown Lynn coffee mug in treacle glaze, with moulded panel of a potter at his wheel and another in gloss white
\$30 - \$50
- 194
Unique [Crown Lynn] coffee mug, with moulded caricature figure of Henry Sawyer (the Seconds Shop manager) with speech balloon 'Bloody Pin 'Oles' and 'BOSS'. marked underneath: Made by Thompson 74. Provenance: Purchased from the estate of Henry Sawyer
\$50 - \$80
- 195
Crown Lynn (Phillipines made) Sept 1976 Sevens Hong Kong Nomads Rugby Tour souvenir toilet pan mug
\$40 - \$60
- 196
Crown Lynn spherical lamp base. With ribbed walls and tree feet. Kauri capped. Mid - brown dribble glazed. Stamped mark
\$200 - \$300
- 197
Crown Lynn lamp base as above. Metal capped. Stamped mark and incised fractional numbers. Pale green dribble glazed
\$200 - \$300



- 198
Crown Lynn 'Three Faces of Eve' lamp base. Blue - green semi - lustre glaze with golden highlights (Titian - type glaze)
\$800 - \$1100
- 199
Crown Lynn 'Three Faces of Eve' lamp base. Matt white glaze. Restoration to base
\$400 - \$600
- 200
Crown Lynn 'Three Faces of Eve' lamp base, designed by David Jenkin. Cream yellow glazed. Restoration to the top
\$500 - \$700
- 201
Crown Lynn lamp base modelled as a seated naked lady on a rocky base. Modelled by David Jenkin. With original painted steel tube lamp support. Matt white glaze
\$400 - \$600
- 202
Rare Crown Lynn lamp base modelled as a horse's head by David Jenkin. Matt white glaze
\$800 - \$1000
- 203
Crown Lynn campana shaped urn table lamp base in matt white.
\$80 - \$100
- 204
Crown Lynn table lamp base, fluted canister shape with scattered floral decoration
\$80 - \$100
- 205
Daniel Steenstra design for Crown Lynn table lamp base with fine brush point candy stripe decoration
\$150 - \$200
- 206
Emerald green glazed table lamp base, possibly Titian, with Milne & Choice label
\$40 - \$60
- 207
Crown Lynn biscuit blank enamel painted finish by Royal Oak Potteries with colourful bands. Shape 3 medium size
\$150 - \$200
- 208
Crown Lynn biscuit blank enamel painted finish by Royal Oak Potteries in pastel bands. Shape 46, medium size
\$150 - \$200
- 209
Crown Lynn Hand Potted beaker vase by Daniel Steenstra. Woodgrain with incised turned bands framing slip dotting
\$150 - \$200
- 210
Large Crown Lynn Hand Potted tapering vase. Shape 23. Lathe turned walls
\$600 - \$800
- 211
Daniel Steenstra for Crown Lynn lidded squat baluster vase, painted faux marble effect with white banding.
\$100 - \$125

212
Daniel Steenstra for Crown Lynn short baluster vase decorated previous lot
\$120 - \$140

213
Daniel Steenstra for Crown Lynn jardinière and saucer with sponged marbled finish in browns and greens and lathe turned bands
\$150 - \$200

214
Daniel Steenstra for Crown Lynn jardinière and saucer with marbled finish in greens and lathe turned bands
\$150 - \$200

215
Daniel Steenstra for Crown Lynn jardinière and saucer with sponged marbled finish in browns and greens and lathe turned bands
\$150 - \$200

216
Daniel Steenstra for Crown Lynn jardinière and saucer with sponged marbled finish in browns and greens and reds. Hairline crack
\$80 - \$100

217
Daniel Steenstra for Crown Lynn green glazed squat vase with pattern of raised dots in white slip. Incised and printed marks
\$300 - \$350

218
Hand Potted Crown Lynn float bowl with airbrush speckled brown eggshell glaze, cream interior. Incised mark
\$100 - \$150

219
Crown Lynn Hand Potted tall shoulder vase painted with a branch of feathery colourful leaves. Printed marks.
\$300 - \$500

220
Mirek Smisek for Crown Lynn 'Bohemia Ware' tapering cylindrical vase, decorated sgraffito on matt brown glaze of trellis - like amoebic forms
\$400 - \$600

221
Mirek Smisek for Crown Lynn 'Bohemia Ware' tapering ovoid vase, decorated with sgraffito through light matt brown glaze of lattice lozenge forms
\$400 - \$600

222
Mirek Smisek for Crown Lynn 'Bohemia Ware' short shoulder vase, decorated with sgraffito through matt brown glaze of concentric line amoebic forms. Drilled as lamp base
\$400 - \$600

223
Mirek Smisek for Crown Lynn 'Bohemia Ware' tapering cylindrical vase, decorated with sgraffito through matt brown glaze of concentric line amoebic forms
\$400 - \$600



the jim drummond personal collection session 1



231



234



237

224
Mirek Smisek for Crown Lynn small posy vase
lathe turned foot through matt mocca glaze
\$100 - \$150

225
Crown Lynn float bowl matt white. Shape 52.
Tiki mark
\$80 - \$100

226
Crown Lynn float bowl, gloss black glaze. Shape
51.
\$100 - \$150

227
Crown Lynn float bowl, celadon glaze. Shape 55.
Printed mark.
\$150 - \$200

228
Frank Carpay for Crown Lynn deep bowl with
chillies and green pepper slices pattern to the
wall. Tiki stamp and Handwerk cipher. Number
781 - 7
\$400 - \$600

229
Frank Carpay for Crown Lynn, fruit bowl and
set of six dessert bowls. Decorated with a
vacant eye pattern. Tiki stamp and Werk cipher.
Number 769 - 10
\$1000 - \$1500

230
Frank Carpay for Crown Lynn small hors
d'oeuvres dish with fluted rim, sgraffito to the
well through blue glaze with a vine leaf
\$100 - \$150

231
Frank Carpay for Crown Lynn coffee mug
decorated with hand painted design .Tiki mark
Numbered 772 - 10. Restored rim
\$250 - \$300

232
Arthur and Olive Rhodes for Crown Lynn
cylindrical vase with capstan shaped neck,
in natural red clays with clear glaze and hand
worked surface decoration. Tiki stamp
\$300 - \$500

233
Arthur and Olive Rhodes for Crown Lynn
angular baluster shaped vase with hand worked
surface collar. In natural clay with clear glaze. Tiki
stamp.
\$300 - \$500

234
Arthur and Olive Rhodes for Crown Lynn
large baluster vase, with hand worked surface
decoration. In natural two colour clays. Tiki
stamp.
\$350 - \$550

235
David Jenkin for Crown Lynn Expo '70 platter,
transfer decorated with the Maui myth and
relief pattern of pah palisades intersected by an
abstracted pattern simulating boiling mud pools.
The myth printed to the back.
\$400 - \$600

236
Rare Crown Lynn sample plate decorated with
transfer shields and logos of various institutions
and clubs as an encircling band.
\$200 - \$300

237
Temuka Pottery tobacco jar and cover. Designed
by T N Lovatt, Mauve streaky glazed base with
moulded Maori motifs , celadon green glazed top
modelled as a Maori chief. The top restored.
\$700 - \$900

238
Parker Pottery for Lincoln Wines flask and
stopper. Lozenge section, brown treacle glaze,
decorated in high relief with a tiki and manaia
figures and curvilinear motifs.
\$250 - \$350

239
Unmarked, unglazed biscuit flask as above,
lacking stopper.
\$200 - \$250

240
Mavis Jack small emerald green glazed pin dish.
Decorated with a raised tiki figure to the well.
Incised signature under.
\$60 - \$80

241
Modified Titian Ware mould (possibly Portage
Road pottery, New Lynn [ex Crown Lynn staff])
bailer shaped dish. Modelled with Maori motifs
and map of NZ. Incised marks verso and Brooke
Ceramic label
\$100 - \$200

242
Crown Lynn Art Déco wall vase cream glazed,
moulded with seahorse. Hairline to back.
\$60 - \$100

243
Two Royal Oak Pottery hand painted biscuit
ware wall vases, modelled as a scallop shell and
straw bonnet. One labelled
\$60 - \$80

244
Three Crown Lynn biscuit blanks wall pocket
vases painted by Royal Oak Pottery in enamels,
one modelled as a pigeon roost.
\$50 - \$70

245
Two Crown Lynn wall pocket vases, green glazed. Shapes 121 and 122 (the later wit faults to back) Modelled as rock face and tree trunk.
\$100 - \$150

246
Crown Lynn biscuit blank painted by Royal Oak Pottery wall pocket vase. Modelled as a magnolia and songbird
\$60 - \$80

247
Two white Crown Lynn wall vases. Shape 8 and 506
\$80 - \$100

248
Two white Crown Lynn wall vases – dahlia head and daffodil flower
\$100 - \$130

249
Four small Crown Lynn wall pockets, shape 464, variously glazed
\$60 - \$80

250
Four small Crown Lynn wall pockets, various shapes
\$60 - \$80

251
Crown Lynn 'Kelston' Fruit decorated water jug and five cups
\$80 - \$120

252
Crown Lynn 'Ascot' coffee set in maroon and cream with gilt highlights (3 cups and saucers)
\$80 - \$120

253
Crown Lynn 'all - over - floral' decorated plate.
\$50 - \$100

254
Set of three graduated Crown Lynn mixing bowls, butterscotch and mocca banded
\$75 - \$100

255
Uncommon Crown Lynn lathe turned mixing bowl for the Ritemp Food Mixer, manufactured for the English Electric Company Ltd in Preston, Lancashire. Cream glaze.
\$60 - \$100

256
Crown Lynn oblong white dish moulded with chinoiserie motifs
\$60 - \$80

257
Crown Lynn vitrified ware white cheese or butter dish and cover
\$40 - \$60

258
Timaru Potteries mixing bowl with daubed glazes. Printed mark, c.1940s. D.300mm
\$60 - \$100

259
Glen Afton large mixing bowl. Moulded with typical V shapes. Buff coloured. D.350mm. Ref : Pottery in NZ, Lambert, p.90.
\$150 - \$250

260
Glen Afton medium size mixing bowl as above D.300mm.
\$125 - \$200

261
Glen Afton slip cast trough vase, green and cream glazed on straw coloured body. Ref and Illustrated Pottery in NZ, Lambert, p89.
\$150 - \$250

262
Rare Partridge Pottery slip cast biscuit ware bowl painted in enamels on a red, blue and white speckled ground with a yellow dahlia. Original label to interior. Ref: Pottery in NZ, Lambert, pp119 - 120.
\$40 - \$60

263
Elizabeth Matheson (PAKA) pottery twin lipped ewer vase. Blue glaze. Incised marks and date '42
\$80 - \$100

264
Elizabeth Matheson (PAKA) pottery small green glazed jug, dated '48
\$40 - \$60

265
Olive Jones sky blue glazed squat baluster shaped vase. Incised signature and number
\$150 - \$200

266
Olive Jones tapering cylindrical vase with green glaze over red underglaze, wax resist gestural floral design low on one side. Incised signature and date '56
\$300 - \$350

267
Olive Jones ring trough vase. Plum glazed. Incised signature and number
\$200 - \$250

268
Small Olive Jones squat circular vase with thick crackled yellow glaze and painted Arts and Crafts plaited pattern to the shoulder in green. Incised signature.
\$200 - \$250

269
Olive Jones squat circular vase, pale cherry glaze. Incised signature and numbers
\$180 - \$220

270
Olive Jones squat baluster vase, plum glaze with speckling imitating the Chinese hare's fur glazes. Incised signature.
\$300 - \$400



268



271

271
Briar Gardner Art Deco posy vase with flaring rim. Yellow green glazes. Incised signature.
\$200 - \$250

272
Briar Gardner circular bowl with turned walls. Glazed in imitation of Chinese chun - type glaze. Incised signature.
\$200 - \$250

273
Briar Gardner deep bowl with majolica - type yellow green glaze.
\$200 - \$250

274
Briar Gardner tapering cylindrical small vase with turned walls. Incised signature and date 1/5/41
\$250 - \$350

275
Briar Gardner spherical Art Deco shaped vase, with lathe turned walls, Green brushed glaze over yellow underglaze. Incised marks: NZ Centennial 1939 - 40 and signature.
\$400 - \$600

276
Briar Gardner large oval trough vase with murky olive and dark plum glazes. Incised signature.
\$300 - \$500

277
Briar Gardner small squat circular Art Deco ewer. Green majolica - type glazes. Incised initials, NZ and date: 14/10/32
\$150 - \$200



278
Briar Gardner circular bowl with inverted rim. Incised signature, NZ and dated:29/7/35. \$350 - \$450

279
Briar Gardner small squat baluster vase. Green glazed, incised with koru motif to the shoulder. \$150 - \$200

280
Briar Gardner circular posy vase. In majolica - like green blue glazes. Incised signature \$150 - \$200

281
Briar Gardner / R.F. Carr circular posy vase. In similar glazes to above. Incised to the walls R F Carr ~ Made July 1943 Whilst A Patient ~ Auckland Hospital. Gardner performed occupational therapy classes at Auck Hosp. \$100 - \$150

282
Elizabeth Lissaman glazed terra cotta wall plate Decorated with three birds. An impressed pattern to the footing. Date code for 1974. \$350 - \$500

283
Elisabeth Lissaman cream jug decorated with a Mycean scroll pattern on powder blue and dark blue ground. Incised marks \$150 - \$250

284
Elisabeth Lissaman honey pot , banded brown glazes on red clay body.The lid as a sombrero. \$60 - \$80

285
Pair of William Speer agate ware brickworks inverse baluster shaped vases. Made whilst working at Gardner Works, New Lynn. Faults. \$400 - \$800

286
Minnie F White Art deco ewer vase. Mottled blue glaze over red clay body.Incised and painted signatures and date: 1930. \$800 - \$1000

287
Minnie F White two handled squat circular vase with brown salt glaze. Painted signature \$300 - \$400

288
Jova Rancich large ovoid vase, majolica - type glazes in yellow brown and green. Impressed mark J Rancich, Auckland. \$800 - \$1200

289
Jova Rancich large ovoid vase with flaring mouth. Blue - green majolica - type galze. Impressed mark \$800 - \$1200

290
Jova Rancich squat circular vase. Majolica - type green - yellow glaze. Incised with inverted GL and under: Made in New Lynn, JR & Co, NZ. \$400 - \$600

291
Jova Rancich squat circular vase, inky blue glaze. Impressed mark under glazed base. \$100 - 150

292
O C Stephens kaka beak shaped wall pocket vase, with speckled brown glaze. Printed mark. \$150 - \$200

293
Temuka Potteries commissioned advertising ware ashtray for General Electric Motors. Modelled with an electric motor to the rim. \$150 - \$200

294
Milton Pottery ewer vase. Majolica glazed body with Barningtons, Dunedin made spelter gilt mounts. Ref: Pottey in NZ, Lambert, p.27. Mount damaged \$400 - \$600

295
Milton Pottery ewer vase. Majolica glazed body as above \$600 - \$800

296
St Ives Pottery, England mug. Tenmoku glazed. \$100 - \$150

297
Pair of St Ives Pottery mugs, waisted shape. \$100 - \$150

298
St Ives Pottey small bowl with gestural brushwork decoration. \$100 - \$150

299
Troika , St Ives, England part coffee set. Faults. \$200 - \$300

300
Three pieces of Rick Rudd raku fired, crackle glazed pottery, various asymmetric shapes. One piece glaze chipped \$200 - \$300

**FOLLOWED BY SESSION 3
400 SHOP STOCK LOTS
SEE TITLE PAGE FOR DETAILS
AND TIMES**

END OF DAY ONE
SATURDAY 2ND MAY

282

289

288

278

295

CONDITIONS OF SALE

NOTE IT IS ASSUMED THAT ALL BIDDERS AT AUCTION HAVE READ AND AGREED TO THE CONDITIONS DESCRIBED ON THIS PAGE. ART+OBJECT DIRECTORS ARE AVAILABLE DURING THE AUCTION VIEWING TO CLARIFY ANY QUESTIONS YOU MAY HAVE.

1 REGISTRATION: Only registered bidders may bid at auction. You are required to complete a bidding card or absentee bidding form prior to the auction giving your correct name, address and telephone contact + supplementary information such as email addresses that you may wish to supply to ART+OBJECT

2 BIDDING: The highest bidder will be the purchaser subject to the auctioneer accepting the winning bid and any vendor's reserve having been reached. The auctioneer has the right to refuse any bid. If this takes place or in the event of a dispute the auctioneer may call for bids at the previous lowest bid and proceed from this point. Bids advance at sums decreed by the auctioneer unless signaled otherwise by the auctioneer. No bids may be retracted. The auctioneer retains the right to bid on behalf of the vendor up to the reserve figure.

3 RESERVE: Lots are offered and sold subject to the vendor's reserve price being met.

4 LOTS OFFERED AND SOLD AS DESCRIBED AND VIEWED: ART+OBJECT makes all attempts to accurately describe and catalogue lots offered for sale. Notwithstanding this neither the vendor nor ART+OBJECT accepts any liability for errors of description or faults and imperfections whether described in writing or verbally. This applies to questions of authenticity and quality of the item. Buyers are deemed to have inspected the item thoroughly and proceed on their own judgment. The act of bidding is agreed by the buyer to be an indication that they are satisfied on all counts regarding condition and authenticity.

5 BUYERS PREMIUM: The purchaser by bidding acknowledges their acceptance of a buyers premium of 15% + Gst on the premium to be added to the hammer price in the event of a successful sale at auction.

6 ART+OBJECT IS AN AGENT FOR A VENDOR: A+O has the right to conduct the sale of an item on behalf of a vendor. This may include withdrawing an item from sale for any reason.

7 PAYMENT: Successful bidders are required to make full payment immediately post sale – being either the day of the sale or the following day. If for any reason payment is delayed then a 20% deposit is required immediately and the balance to 100% required within 3 working days of the sale date. Payment can be made by Eftpos, bank cheque or cash. Cheques must be cleared before items are available for collection. Credit cards are not accepted.

8 FAILURE TO MAKE PAYMENT: If a purchaser fails to make payment as outlined in point 7 above ART+OBJECT may without any advice to the purchaser exercise its right to: a) rescind or stop the sale, b) re offer the lot for sale to an underbidder or at auction. ART+OBJECT reserves the right to pursue the purchaser for any difference in sale proceeds if this course of action is chosen, c) to pursue legal remedy for breach of contract.

9 COLLECTION OF GOODS: Purchased items are to be removed from ART+OBJECT premises immediately after payment or clearance of cheques. Absentee bidders must make provision for the uplifting of purchased items

10 BIDDERS OBLIGATIONS: The act of bidding means all bidders acknowledge that they are personally responsible for payment if they are the successful bidder. This includes all registered absentee or telephone bidders. Bidders acting as an agent for a third party must obtain written authority from ART+OBJECT and provide written instructions from any represented party and their express commitment to pay all funds relating to a successful bid by their nominated agent.

11 BIDS UNDER RESERVE & HIGHEST SUBJECT BIDS: When the highest bid is below the vendor's reserve this work may be announced by the auctioneer as sold 'subject to vendor's authority' or some similar phrase. The effect of this announcement is to signify that the highest bidder will be the purchaser at the bid price if the vendor accepts this price. If this highest bid is accepted then the purchaser has entered a contract to purchase the item at the bid price plus any relevant buyers premium.

IMPORTANT ADVICE FOR BUYERS

THE FOLLOWING INFORMATION DOES NOT FORM PART OF THE CONDITIONS OF SALE, HOWEVER BUYERS, PARTICULARLY FIRST TIME BIDDERS ARE RECOMMENDED TO READ THESE NOTES.

(A) BIDDING AT AUCTION: Please ensure your instructions to the auctioneer are clear and easily understood. It is well to understand that during a busy sale with multiple bidders the auctioneer may not be able to see all bids at all times. It is recommended that you raise your bidding number clearly and without hesitation. If your bid is made in error or you have misunderstood the bidding level please advise the auctioneer immediately of your error – prior to the hammer falling. Please note that if you have made a bid and the hammer has fallen and you are the highest bidder you have entered a binding contract to purchase an item at the bid price. New bidders in particular are advised to make themselves known to the sale auctioneer who will assist you with any questions about the conduct of the auction.

(B) ABSENTEE BIDDING: ART+OBJECT welcomes absentee bids once the necessary authority has been completed and lodged with ART+OBJECT. A+O will do all it can to ensure bids are lodged on your behalf but accepts no liability for failure to carry out these bids. See the Absentee bidding form in this catalogue for information on lodging absentee bids. These are accepted up to 2 hours prior to the published auction commencement.

(C) TELEPHONE BIDS: The same conditions apply to telephone bids. It is highly preferable to bid over a landline as the vagaries of cellphone connections may result in disappointment. You will be telephoned prior to your indicated lot arising in the catalogue order. If the phone is engaged or connection impossible the sale will proceed without your bidding. At times during an auction the bidding can be frenetic so you need to be sure you give clear instructions to the person executing your bids. The auctioneer will endeavour to cater to the requirements of phone bidders but cannot wait for a phone bid so your prompt participation is requested.

